

PAM-free diagnostics with diverse type V CRISPR-Cas systems

Santosh R. Rananaware¹, Katelyn S. Meister¹, Grace M. Shoemaker¹, Emma K. Vesco^{1,†}, Luke Samuel W. Sandoval², Jordan G. Lewis¹, August P. Bodin¹, Vedant N. Karalkar⁴, Ian H. Lange¹, Brianna Lauren Maria Pizzano¹, Minji Chang¹, M.Reza Ahmadimashhadi¹, Sarah J. Flannery¹, Long. T. Nguyen¹, Gary P. Wang^{5,6}, Piyush K. Jain^{1,3,7,*}

¹ Department of Chemical Engineering, University of Florida, Gainesville, Florida, USA

² Department of Biology, CLAS, University of Florida, Gainesville, Florida, USA

³ Department of Molecular Genetics and Microbiology, University of Florida, Gainesville, Florida, USA

⁴ Department of Computer Science, University of Florida, Gainesville, Florida, USA

⁵ Department of Medicine, Division of Infectious Diseases and Global Medicine, University of Florida, Gainesville, Florida, USA

⁶ Medical Service, North Florida/South Georgia Veterans Health System, Gainesville, Florida, USA

⁷ UF Health Cancer Center, University of Florida, Gainesville, Florida, USA

[†]Current Affiliation: Department of Human and Molecular Genetics, Baylor College of Medicine, Houston, Texas, USA

*Corresponding author: jainp@ufl.edu

Supplementary Information

Table 1: List of protein sequences used in this study:

Sr. No.	Name	Sequence
1	LbCas12a	MSKLEKFTNCYLSKTLRFKAIPVGKTQENIDNKRLLVEDEKRAEDYKGVKKLL DRYYLSFINDVLHSIKLKNLNNYISLFRKKTRTEKENKELENLEINLRKEIAKAFK GNEGYKSLFKKDIIETILPEFLDDKDEIALVNSFNGFTTAFTGFFDNRENMFSEEA KSTSIAFRCINENLTRYISNMDIFEKVD AIFDKHEVQEIKEKILNSDYDVEDFFEGE FFNFVLTQEGIDVYNAIIGGFVTESEGEKIKGLNEYINL YNQKTKQKLPKFKPLYKQ VLSDRESLSFYGEGYTSDEEVLEVFRNTLNKNSEIFSSIKKLEKLFKNFDEYSSAGI FVKNPAISTISKDIFGEWNVIRDKWNAEYDDIHLKKA VVTEKYEDDRRKSFK KIGSFSLEQLQEYADADLSVVEKLEKIIQKVDEIYKVYGSSEKLFADADFVLEKSL KKNDAVVAIMKDLLDSVKSFENYK AFFGEGKETNRDESFGDFVLA YDILLKV DHIYDAIRNYVTQKPYSKDKFKLYFQNPQFMGGWDKDKETDYRATILRYGSKY YLAIMDKKYAKCLQKIDKDDVNGNYEKINYKLLPGPNKMLPKVFFSKKWMAY YNPSEDIQKIYKNGTFKKGDMFNLNDCHKLIDFFKDSISRYPKWSNAYDFNFSET EKYKDIAGFYREVVEEQGYKVSFESASKKEVDKLVEEGKLYMFQIYNKDFSDKSH GTPNLHTMYFKLLFDENNHGQIRLSGGAE LFMRRASLKKEELV VHPANSPIANK NPDNPKKTTTLSYDVYKDKRFSE DQYELHIPIAINKCPKNIFKINTEVRVLLKHDD NPYVIGIDRGERNLLYIVVVDGKGNIVEQYSLNEIINN FNIRIKTDYHSLDDKKE KERFEARQNWTSIENIKELKAGYISQV VHKICELVEKYDAVIALEDLNSGFKNR VKVEKQVYQKFEKMLIDKLN YMVDKKSNPCATGGALKGYQITNKFESFKSMST QNGFIFYIPAWLTSKIDPSTGFVNLLKTKYTSIADSKKFISSFDRIMYVPEEDLFEF ALDYKNFSRTDADYIKKWKLYSYGNRIRIFRNPKNVFDWEEVCLTSAYKELF NKYGINYQQGDIRALLCEQSDKAFYSSFMALMSLMLQMRNSITGR TDVDFLISP VKNSDGIFYDSRNYEAQENAILPKNADANGA YNIARVLWAIGQFKKA EDEKLD KVKIAISNKEWLEYAQT SVKH
2	AsCas12a	MTQFEGFTNLYQVSKTLRFELIPQGKTLKHIQE QGFIEEDKARNDHYKELKPIIDR IYKTYADQCLQLVQLDWENLSA AIDSYRKEKTEETRNALIEEQATYRNAIHDIYFI GRTDNLDAINKRHA EIYKGLFKAELFNGKVLKQLGTVTTTEHENALLRSFDKF TTYFSGFYENRKNVFAEDISTAIPH RIVQDNFPKFKENCHIFTRLITAVPSLREHF ENVKKAIGIFVSTSIEEVFSFPFY NQLLTQTQIDLYNQLLGGISREAGTEKIKGLNE VLNLAIQKNDETAHIIASLPHRFIPLFKQILSDRNTLSFILEEFKSDEEVIQSFCKYK TLLRNENVLETAEALFNELNSIDL THIFISHKKLETISSALCDHWDTLRNALYERRI SELTGKITKSAKEKVQRSLKHEDINLQEIISAAGKELSEAFKQKTSEILSHAHAL DQPLPTLKKQEEKEILKSQ LDSLLGLYHLLDWFAVDESNEVDPEFSARLTGIKL EMEPSLSFYNKARNYATKKPYSVEKFKLNFQMPTLASGWDVNKEKNNGAILFV KNGLYYL GIMPQKGRYKALSFEPT EKTSEGFDKMYDYDFPDAAKMIPK CSTQL KAVTAHFQTHHTPILLSN NFIEPLEITKEIYDLNNPEKEPKKFQTAYAKKTGDQKG YREALCKWIDFTRDFLSKYTKTTSIDLSSLR PSSQYKDLGEYYAELNPLLYHISFQ RIAEKEIMDAVETGKLYLFQIYNKDFAKGHHGKPNLHTLYWTGLFSPENLAKTSI KLNQQAELFYRPKSRMKRMAHRLGEKMLNKKLKDQKTPIDTLYQELYDYVN HRLSHDLSDEARALLPNVITKEVSHEI IKDRRFTSDKFFFHVPITLNYQAANSPSKF NQRVNAYLKEHPETPIIGIDRGERNLIYITVIDSTGKILEQRSLNTIQQFDYQKKLD NREKERVAAARQAWSVVGTIKDLKQGYLSQVIHEIVDLMIHYQAVVLENLNFVG KSKRTGIAEKAVYQQFEKMLIDKLNCLVLKDYP AEKVGGLNPNYQLTDQFTSFA KMGTQSGFLFYVPAPYTSKIDPLTGFVDPFVWKT IKNHESRKHFLLEGDFLHYDV KTGDFILHFKMNRNLSFQRGLPGFMPAWDIVFEKNETQF DAKGTPFIAGKRIVPV IENHRFTGRYRDLYPANELIALLEEKGIVFRDGSNILPKLLEND DSHAIDTMVALI RSVLQMRNSNAATGEDYINSPVRDLNGVCFDSRFQNP EWPMADANGAYHIAL KGQLLNHLKESKDLKLQNGISNQDWL AYIQELRN

3	ErCas12a	<p> NNGTNNFQNFQFIGISSLQKTLRNALIPTETTQQFIVKNGIIEKEDLGENRQILKDIM DDYYRGFISETLSSIDDIDWTSLEFEMEIQKNGDNKDTLIKEQTEYRKAIHKKFA NDDRFKNMFSAKLISDILPEFVIHNNNYSASEKEEKQVIVKLSRFATSFKDYFKN RANCFSAADDISSSSCHRIVNDNAEIFFSNALVYRRIVKSLSNDDINKISGDMKDSL KEMSLEEIYSYEKYGEFITQEGISFYNDICGKVNFSFMNLYCQKNKENKNLYKLQK LHKQILCIADTSYEVYPYKFESDEEVYQSVNGFLDNISSKHIVERLRKIGDNYNGYN LDKIYIVSKFYESVSQKTYRDWETINTALEIHYNILPGNGKSKADKVKKAVKN DLQKSITEINELVSNYKLCSDDNKAETIHEISHILNNFEAQELKYNPEIHLVESE LKASELKNVLDVIMNAFWCSVFMTEELVDKDNFVYAELEEIYDEIYPVISLYNL VRNYVTQKPYSTKKIKLNFGIPTLADGWSKSKEYSNNAILMRDNLYYLGFNAK NKPDKKIIEGNTSENKGDYKMIYNLLPGPNKMIPKVFSSKTGVETYKPSAYIL EGYKQNKHIKSSKDFDITFCHDLIDYFKNCIAIHPEWKNFGFDFSDTSTYEDISGF YREVELQGYKIDWTYISEKDIDLLQEKGLYLFQIYNKDFSKKSTGNDNLHTMY LKNLFSEENLKDIVLKLNGEAEIFFRKSSIKNPIHKKGSILVNRTYEAEKQDFGN IQIVRKNIPENIYQELYKYFNDKSDKELSDEAAKLNKVVGHHEAATNIVKDYRYT YDKYFLHMPITINFKANKTGFINDRILQYIAKEKDLHVIGIDRGERNLIYVSVIDTC GNIVEQKSFNIVNGYDYQIKLKQREGARQIARKEWKEIGKIKEGYLSLVIHEI SKMVIKYNAIIVMEDLSYGFKGRFKVERQVYQKFETMLINKLNYLVFKDISITE NGGLLKGYQLTYIPDKLKNVGHQCGCIFYPAAATSKIDPTTGFVNIKFKDLTV DAKREFIKKFDISIRYDSEKNLFCFTFDYNNFITQNTVMSKSSWSVYTYGVRIKRR FVNGRFSNESDTIDITKMEKTLEMTDINWRDGHDLRQDIIDYEIVQHIFEIFRLT VQMRNSLSELEDRDYDRLISPVLNENNIFYDSAKAGDALPKDADANGAYCIALK GLYEIKQITENWKEDGKFSRDKLIKSNKDWDFIQNKRYL </p>
4	BrCas12b RFND	<p> MPVRSFKVKLVTRSGDAEHMLQLRRGLWKTHEIVNQGIAYYMNKLALMRQEP YAGKSREVVRLLELHSLRAQQKRNNWTGDAGTDDEILNLSRRLYELLVPSAIGE KGDAQMLSRKFLSPLVDPNSEGGKGTAKSGRKPRWMKMREEGHPDWEAEREK DEAKKAADPTASILNDLEAFGLRPLFPLFTDEQKGIQWLPKQKRQFVRTWDRDM FQQALERMLSWEWNRRVAEEYQKLQAQRDELYAKYLADGGAWLEALQSFEK QREVELAEESFAAKSEYLITRRQIRGWKQVYEKWSQLPEHAAQEQQFWQVADV QTSPLGAFGDPKVYQFLSQPEHHIWRGYPNRLFHYSYDNGVRKKLQRARHDA TFTLPDPVEHPLWIRFDARGGNIHDYEISQNGKQYQVTFSRLLWPENETWVERE NVTVAIGASQQLKRQIRLDGYADKKQKVRYRDISSGIELTGVLGGAQIQFDRRH LRKASNRLADGETGPVYLVNVVDIEPFLAMRNGRLQTPIGQVLQVVTKDWPKV TGYKPAELISWIQNSPLAVGTGVNTIEAGMRVMSVDLGQRSAAAVSIFEVMRQK PAEQETKLFYPIAVTGLYAVHRRSLLLRLPGEKISDEIEQQRKIRAHARSLVRYQI RLLADVRLHTRGTAEQRRAKLDELLATLQTKQELDQKLWQTELEKLFDYIHEP AERWQQALVAHRTLEPVIGQAVRHWRKSLRIDRKLGLAGMSMWNIIELEETRK LLIAWSKHSRVPGEPNRLDKEETFAPQQLQHIQNVKDDRLKMANLLVMTALG YKYDEAEKQWKEAYPACQMILFEDLSRYRFALDRPRRENRLMKWAHRSIPRL VYLQGELFGIQGVVYSAYTSRFHAKTGAPGIRCHALKEEDLQPNSYVVKQLIK DGFIREDDTGLKPGQIVPWSGGELFVTLADRSGSRLAVIHADINAQNLQKRFW QQNTEIFRVPCKVTTSGLIPAYDKMKKLFKGYFAKINQTDTSEVYVWEHSAKM KGKTPADPAEEGVFDESLTDEMEELEDSEGEYKTLFRDPSGGFFWSSDRWLPQK EFWFWVKRRIEKKLREQLO </p>
5	Cas12i1	<p> MSNKEKNASETRKAYTTKMIPRSHDRMKLLGNFMDYLMGDTPIFFELWNQFGG GIDRDIISGTANKDKISDDLAVNWFKVMPSKPKQVSPSNLANLFQQYSGSEP DIQAQYEFASNFDEKHQWKDMRVEYERLLAELQLSRSDMHHDLKLMYKEKCI GLSLSTAHYITSMFMTGAKNNRQTKHQFYKVIQVLEESTQINSVEQLASIILKA GDCDSYRKLIRCSRKGATPSILKIVQDYELGTNHDDEVNVPISLIANLKEKLGFR EYECEWKCMEKIKAFASKVGPYYLGSYSAMLENALSPIKGMTTKNCKFVLKQI DAKNDIKYENEPFGKIVEGFFDSPYFESDTNVKVVLPHPHIGESNIKTLWEDLNA IHSKYEEDIASLSEDKKEKRIKVVYQGDVCQTINTYCEEVGEAKTPLVQLLRYLY SRKDDIAVDKIIDGITFLSKKHKVEKQKINPVIQKYPFNFNGNSKLLGKIISPKDK LKHNLKCNRNQVDNYIWIIEIKVLNKTMRWEKHHYALSSTRFLEEYVYPATSEN PPDALAARFRKTNNGYEGKPAESAEQIEQIRSAVGLRKVKKRQMRLEAARQQN LLPRYTGWKDFNINICKRGNNEFVTLATKVKKKKEKKNYKVVLYGDANIVRKNT YAAIEAHANGDGVIDYNDLPVKPIESGFVTVESQVRDKSYDQLSYNGVKLLYCK </p>

		PHVESRRSFLEKYRNGTMKDNRGNNIQIDFMKDFEAIADDETSLYYFNMKYCKL LQSSIRNHSSQAKEYREEIFELLRDGKLSVLKLSLNLVFMFKVAKSLIGTYFG HLLKKPKNSKSDVKAPPITDEDKQKADPEMFALRLALEEKRLNKVKSKEVIAN KIVAKALELRDKYGPVLIKGENISDTTKKGKKSSTNSFLMDWLARGVANKVKE MVMMHQGLEFVEVNPFTSHQDPFVHKNPENTFRARYSRCTPSELTEKNRKEIL SFLSDKPSKRPTNAYYNEGAMAFLATYGLKKNVDVLGVSLEKFKQIMANILHQRS EDQLLFPSRGGMFYLATYKLDADATSVNWNGKQFWVCNADLVAAYNVGLVDI QKDFKKK
--	--	--

Table 2: List of Cas12a orthologs and their isoelectric points (Red = high pI, Blue = low pI)

Sr. No.	Name	Isoelectric Point
1	CmtCas12a	8.72
2	Mb2Cas12a	8.66
3	PdCas12a	8.58
4	FnCas12a	8.57
5	MbCas12a	8.47
6	Mb3Cas12a	8.47
7	LbCas12a	8.38
8	HkCas12a	8.36
9	Pb2Cas12a	8.28
10	PcCas12a	8.2
11	BoCas12a	8.18
12	AsCas12a	8.01
13	BfCas12	7.76
14	ArCas12a	7.72
15	MICas12a	7.65
16	TsCas12a	7.15
17	Lb5Cas12a	7.04
18	ErCas12a	6.71
19	BsCas12a	6.47
20	LpCas12a	6.38
21	CmaCas12a	6.09
22	PxCas12a	5.66
23	PrCas12a	5.57

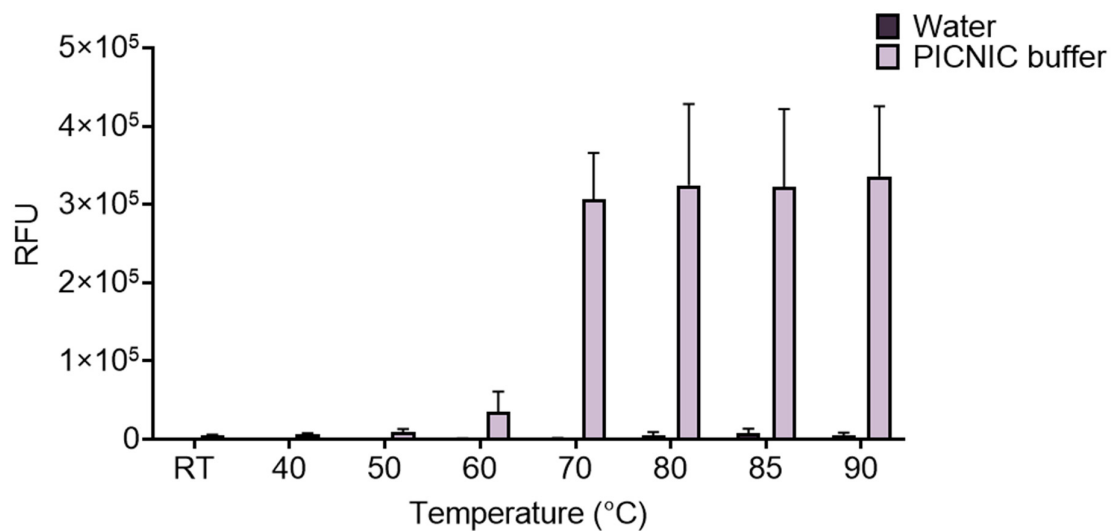


Fig. S1: Temperature dependency of denaturation of dsDNA substrates. Data showing the temperature dependence of trans-cleavage-mediated fluorescence activity in RFU with and without the addition of PICNIC buffer (pH=12) and temperatures ranging from room temperature (RT) to 90°C. Error bars represent Mean \pm S.D. (n=3).

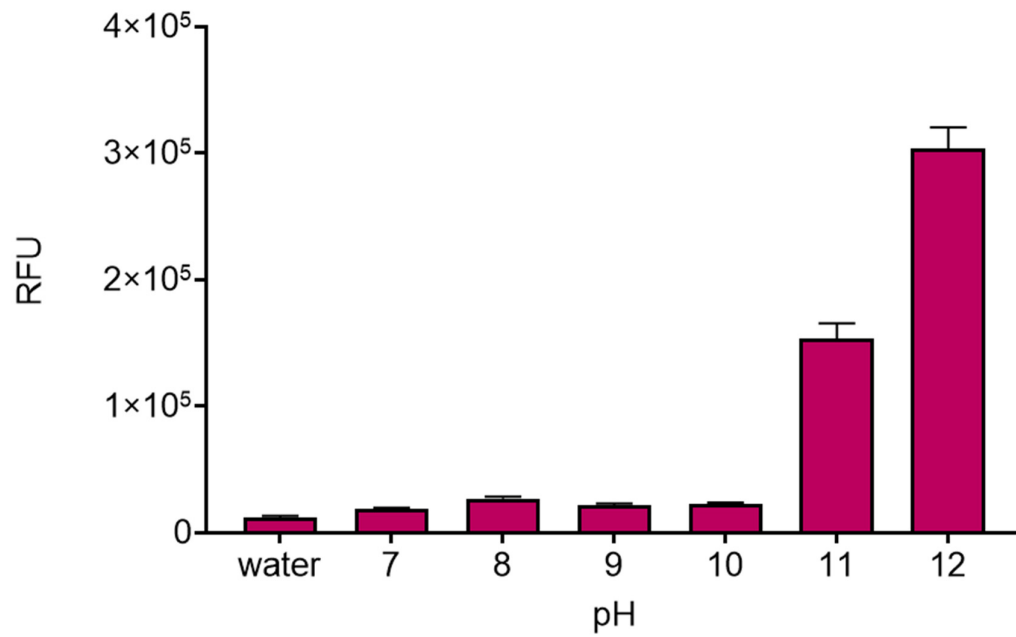


Fig. S2: The effect of pH on the DNA denaturation dynamics. Data showing trans cleavage dependence on pH for a PICNIC reaction. The pH ranges from neutral (7) to 12, with water used as a control. Plot represents the fluorescence intensity in RFU at each condition. Error bars represent Mean \pm S.D. (n=3).

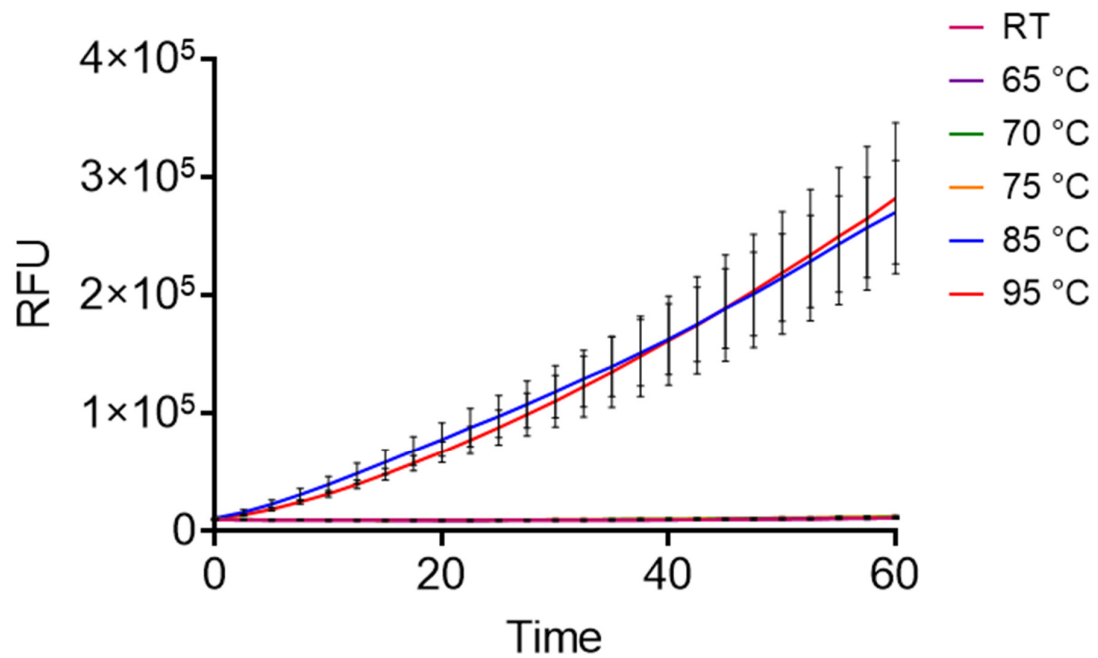


Fig. S3: The effect of incubation temperature on PICNIC method. Graph depicting trans-cleavage fluorescence values utilizing the PICNIC method at various temperatures, ranging from room temperature (RT) to 95°C. Error bars represent Mean \pm SD (n=3) is indicated.

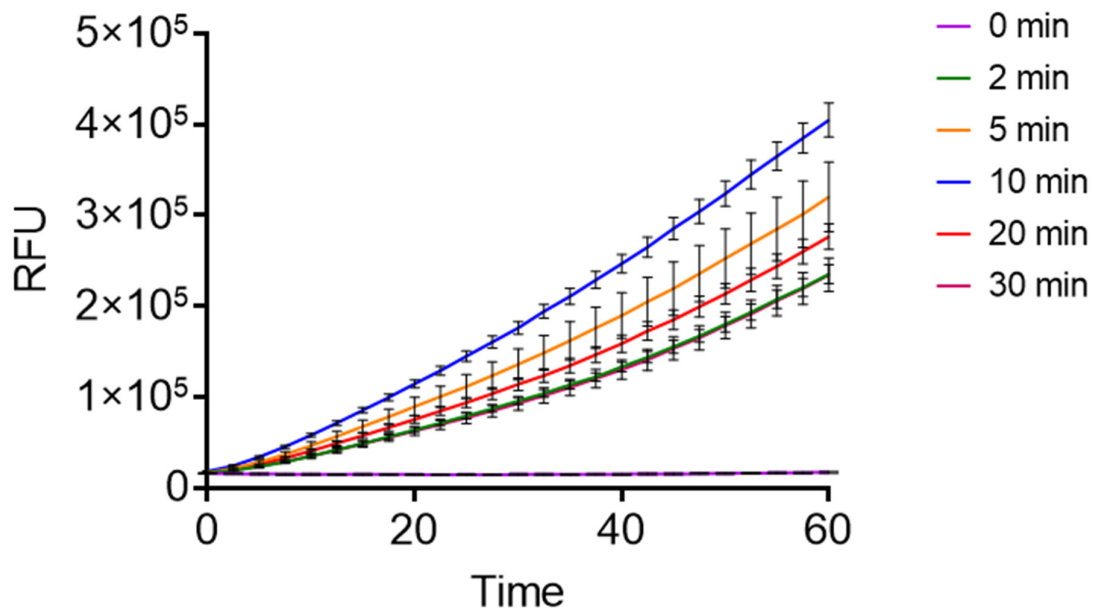


Fig. S4: The effect of heating time on PICNIC method. Graph illustrating the time dependence of target dsDNA denaturation via incubation, from 0 min to 30 min. All samples are incubated in PICNIC buffer at a pH of 12 and a temperature of 100°C and cooled for 15 minutes at room temperature. Error bars represent Mean \pm SD (n = 3).

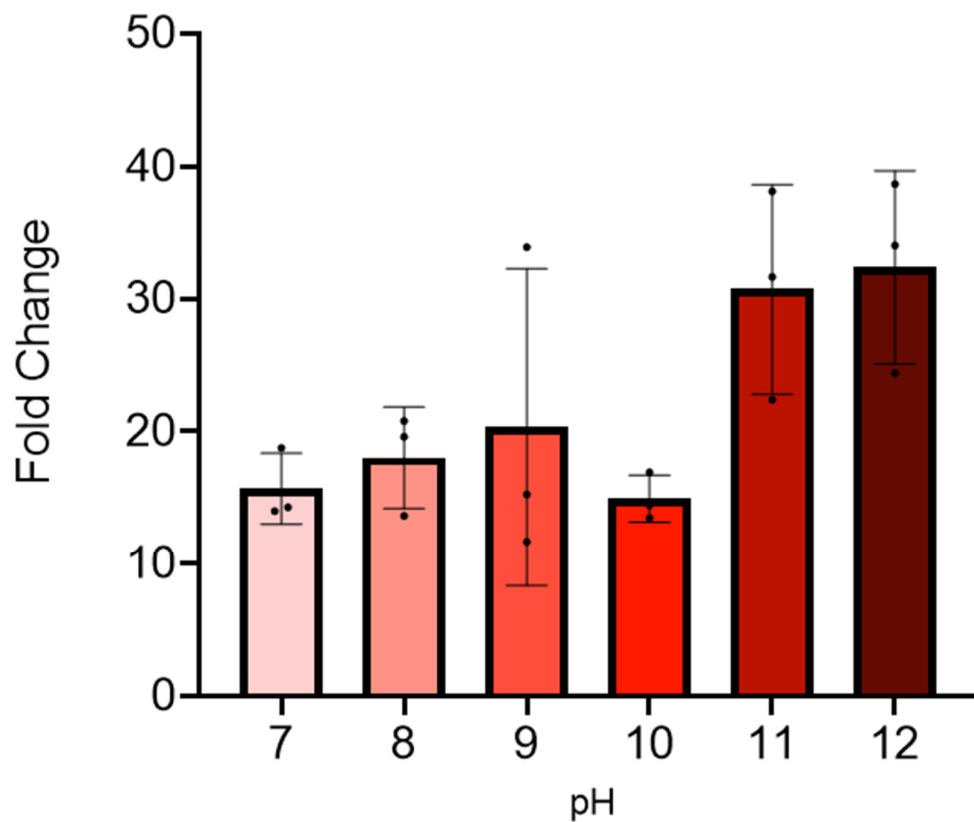


Fig. S5: pH dependence of trans-cleavage activity using the PICNIC method. All samples are incubated under the same conditions at 100°C for 10 minutes with differing pH. pH levels left to right are 7, 8, 9, 10, 11, and 12. Mean \pm SD (n = 3) is indicated.

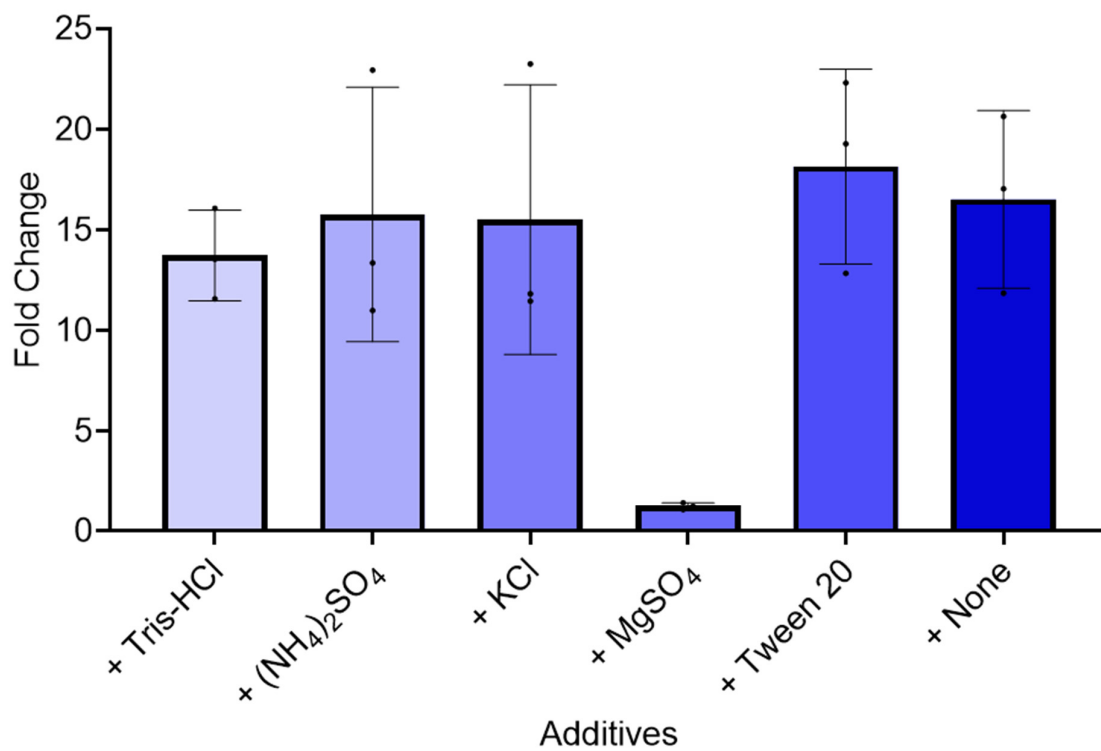


Fig. S6: Fold change at t=30 minutes utilizing the PICNIC method using water at a pH of 12. Various additives to this water at a pH of 12 are indicated. Mean \pm SD (n = 3) is indicated.

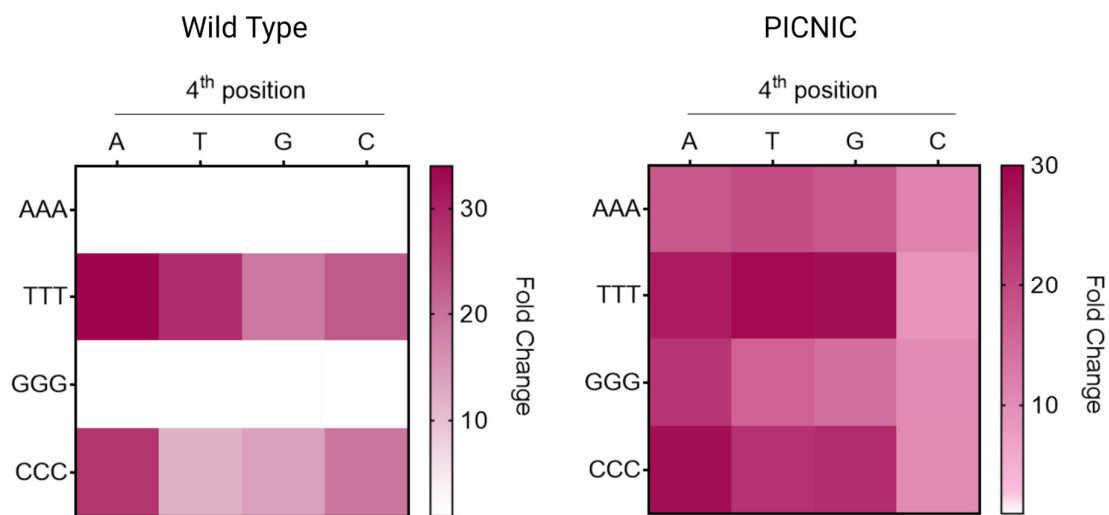


Fig. S7: The effect of changing the 4th nucleotide in the PAM sequence with WT-CRISPR and PICNIC method. Figure showing trans-cleavage activity of target sequences preceded by various PAM sequences under both Wild Type and PICNIC conditions. In this figure the fourth nucleotide of the 4-nucleotide PAM sequence is varied.

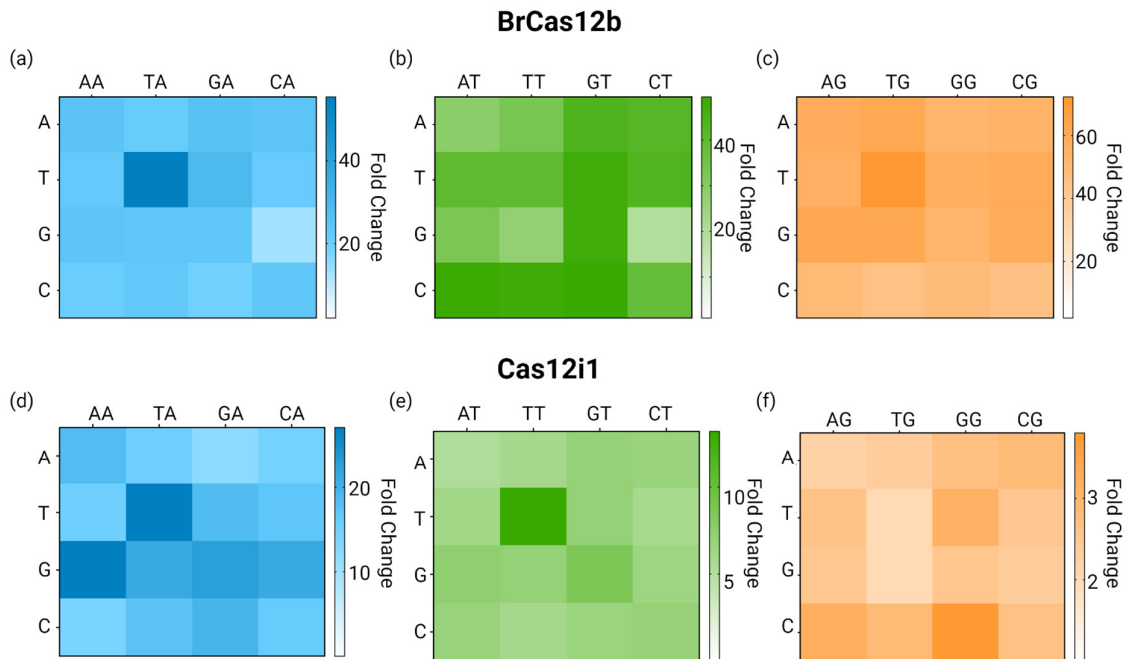


Fig. S8: PAM-library trans-cleavage with Cas12b and Cas12i. Figure showing trans-cleavage activity of target sequences preceded by various ‘NNN’ PAM sequences with PICNIC conditions using BrCas12b (top) and Cas12i1 (bottom).

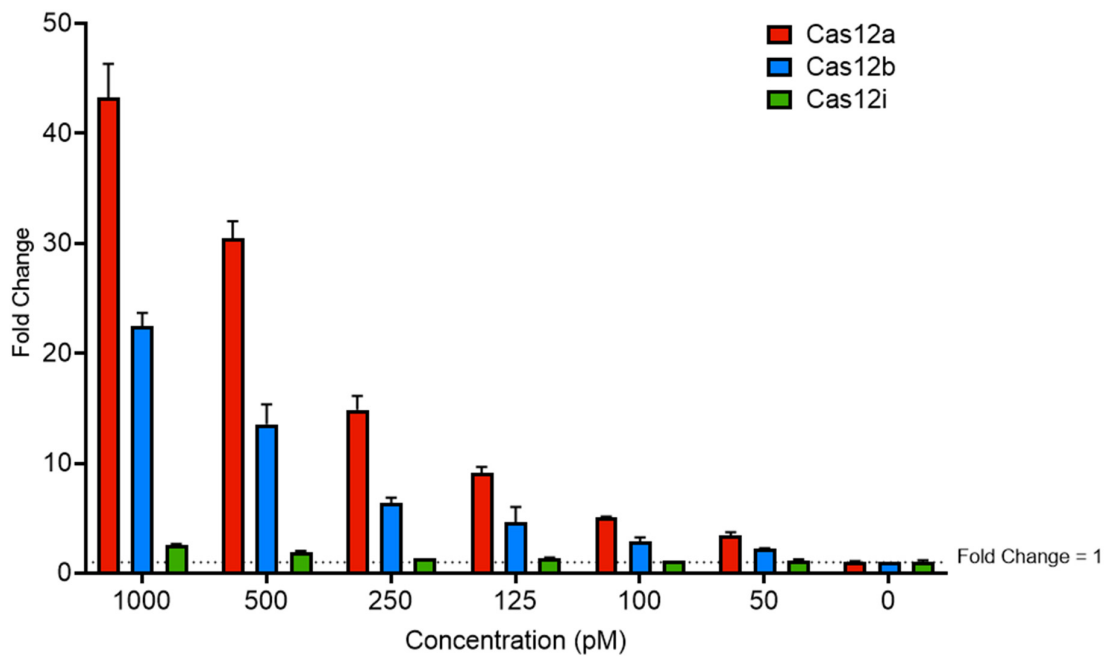


Fig. S9: Comparison of trans-cleavage activities of LbCas12a, BrCas12b, and Cas12i1. Figure showing the trans-cleavage activity of Cas12a, Cas12b, and Cas12i with target concentration varying from 1,000 to 0 pM. Here Cas12a is labeled red, Cas12b is labeled blue, and Cas12i is labeled green. Error bars represent Mean \pm SD (n=3).

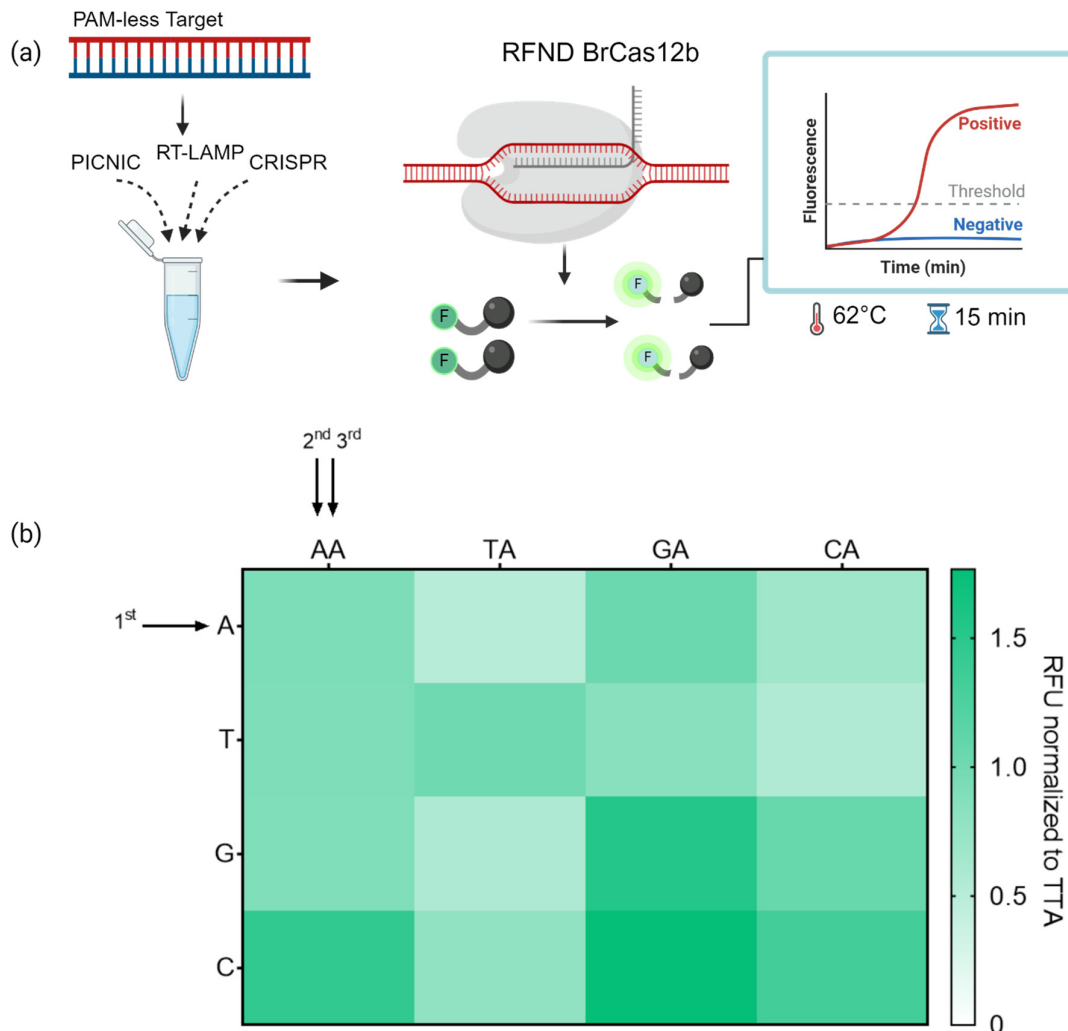


Fig. S10: Heat map represents the fold change of trans-cleavage of 15-nt truncated crRNAs containing A, U, G, or C bases at the first position, tested for the detection of targets containing T, A, C, or G base in a combinatorial fashion (n=3). The fold change is normalized to the activity of the canonical crRNA-target combination.

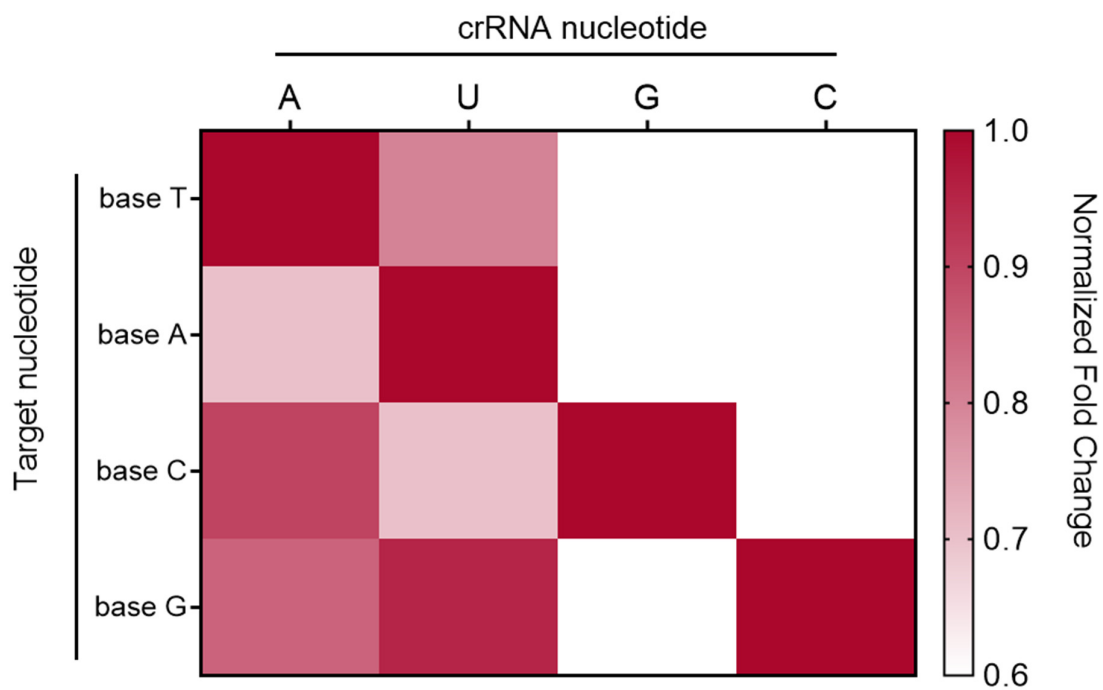


Fig. S11: Heat map represents the fold change of trans-cleavage of 15-nt truncated crRNAs containing A, U, G, or C bases at the first position, tested for the detection of targets containing T, A, C, or G base in a combinatorial fashion (n=3). The fold change is normalized to the activity of the canonical crRNA-target combination.

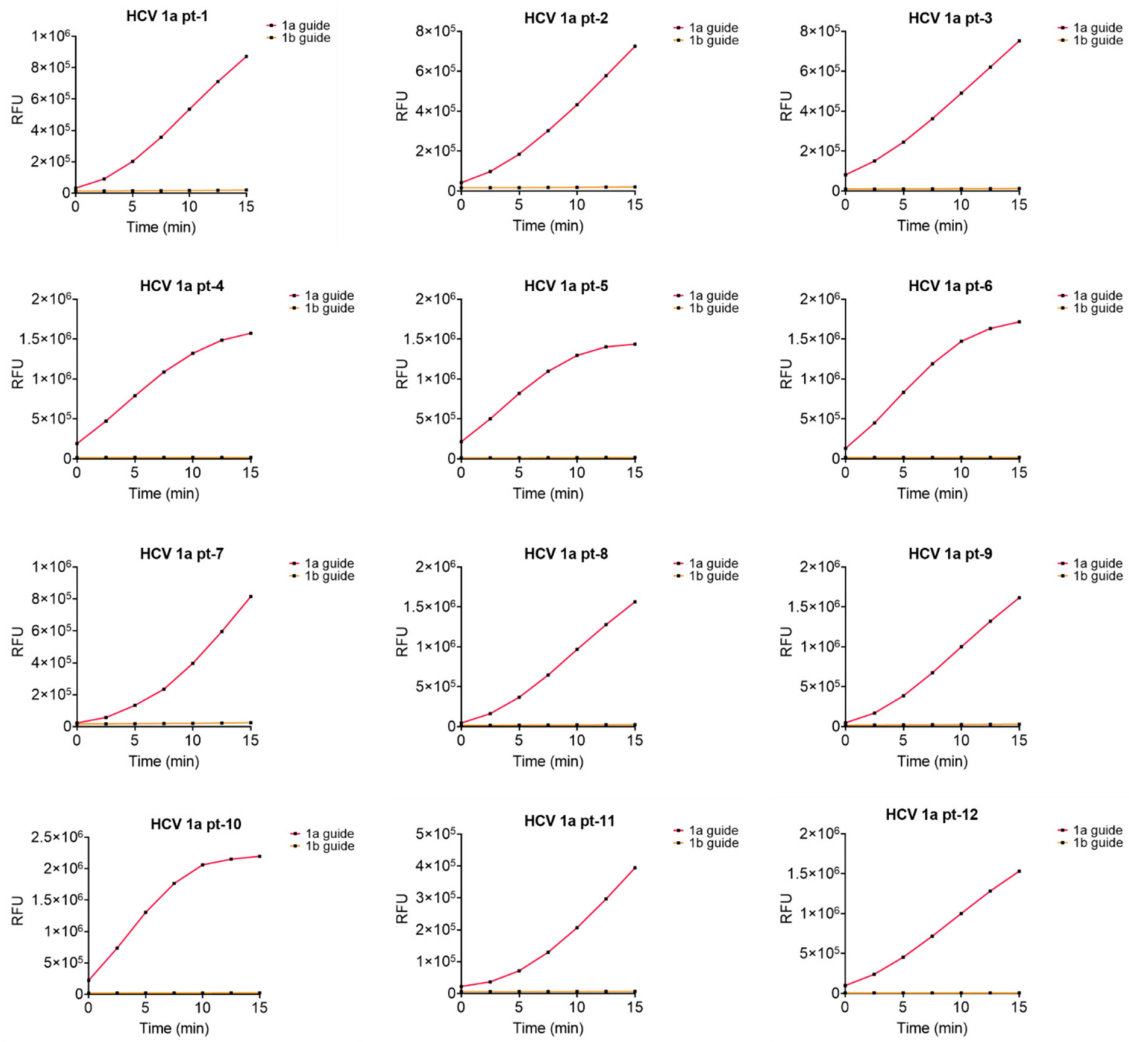


Fig. S12: Plot representing the intensity of the fluorescence obtained in RFU for the detection of 48 HCV-1a patient samples with a PICNIC-based test designed to genotype using specific crRNAs named HCV-1a guide RNA (red) and HCV-1b guide RNA (orange). The HCV-1a samples only show strong fluorescence in the presence of HCV-1a guide but not the HCV-1b guide.

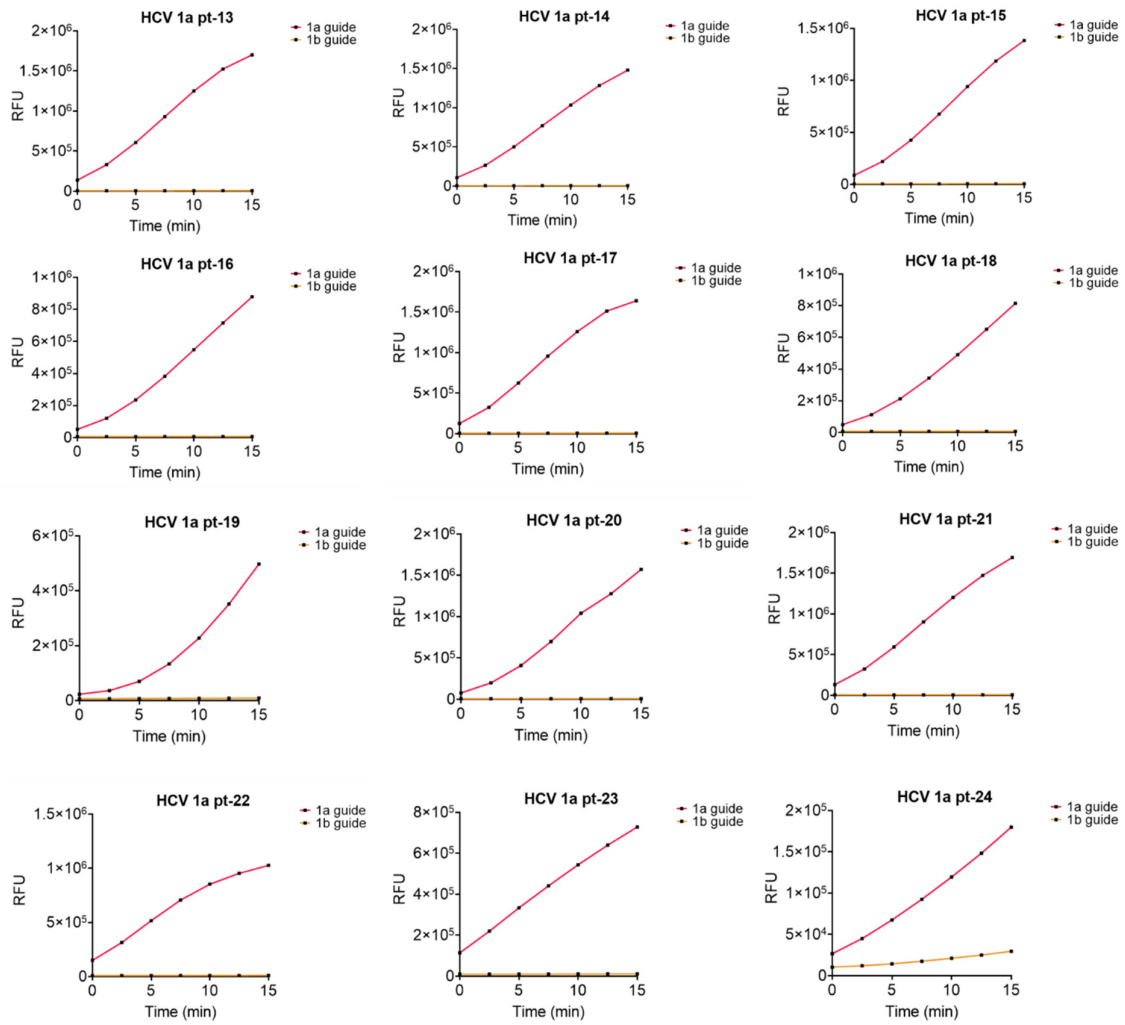


Fig. S12 continued

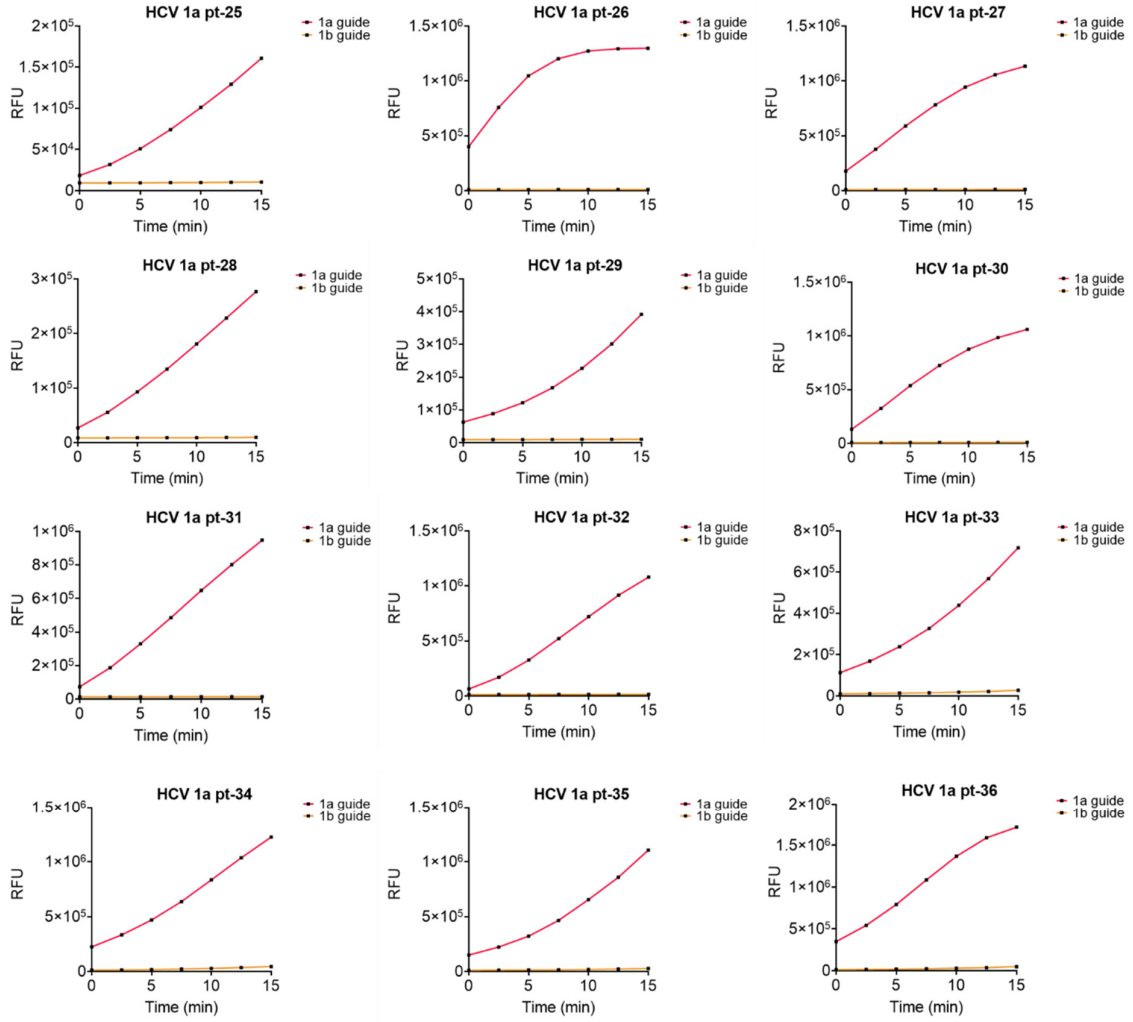


Fig. S12 continued

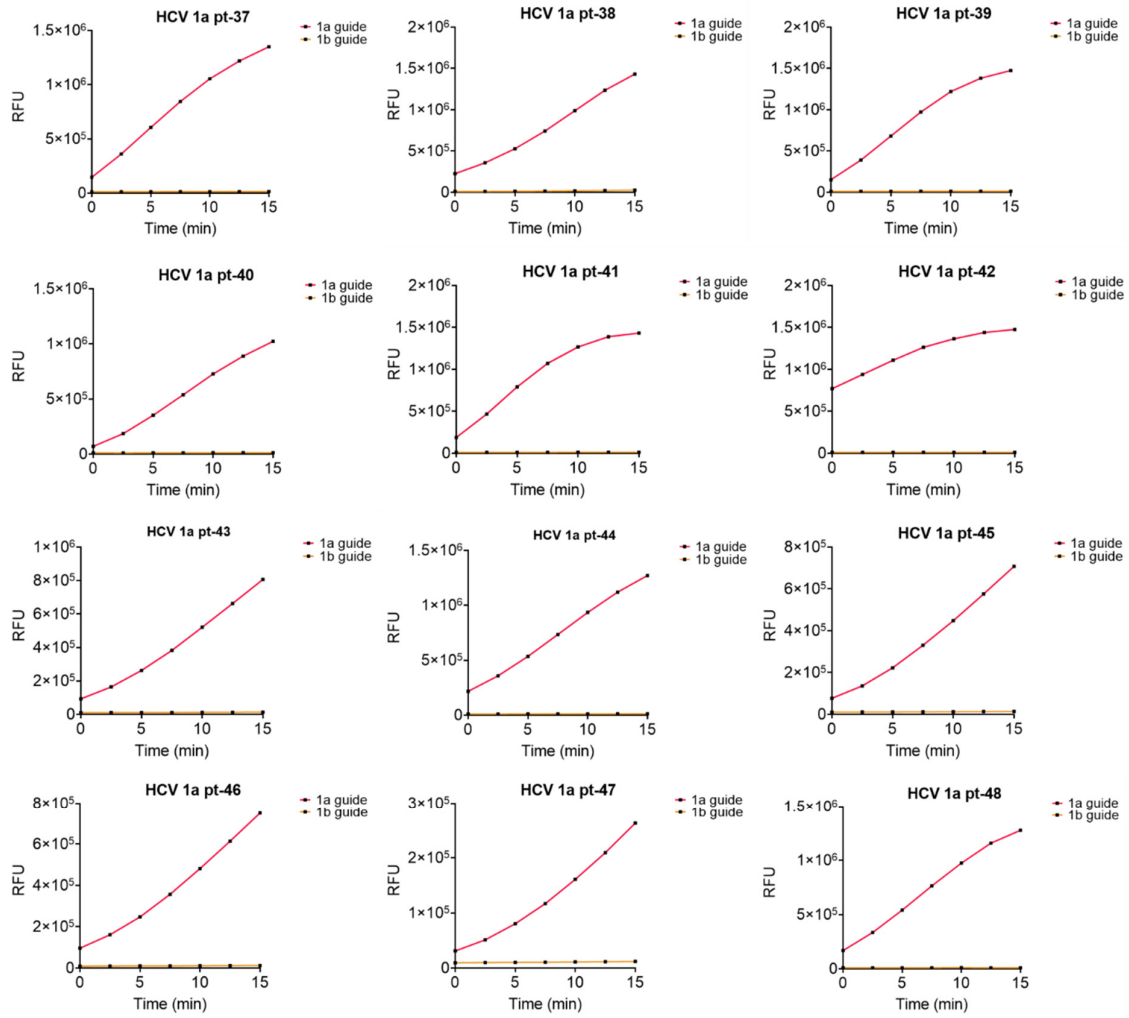


Fig. S12 continued

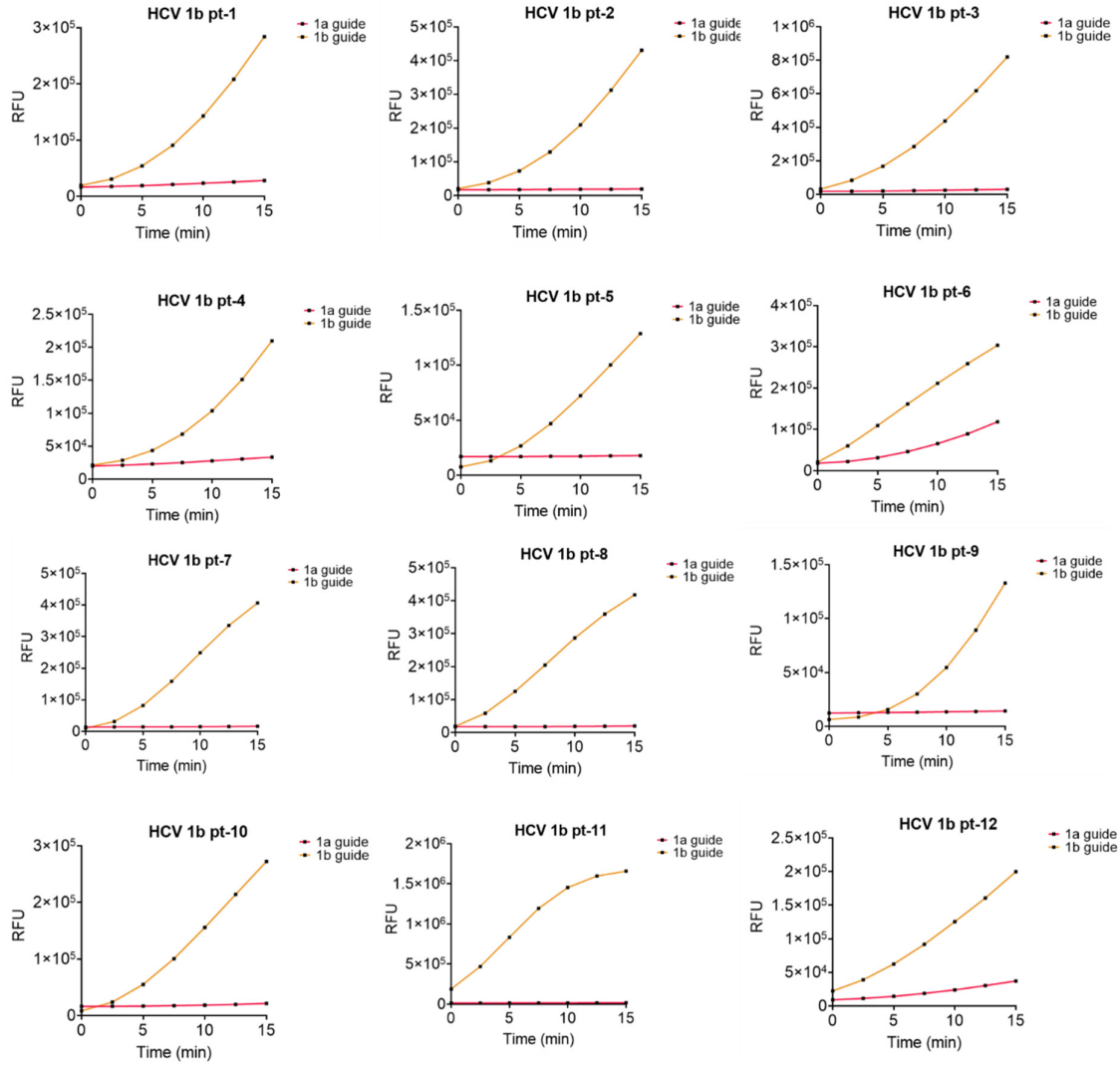


Fig. S13: Plot representing the intensity of the fluorescence obtained in RFU for the detection of 40 HCV-1b patient samples with a PICNIC-based test designed to genotype using specific crRNAs named HCV-1a guide RNA (red) and HCV-1b guide RNA (orange). The HCV-1b samples only show strong fluorescence in the presence of HCV-1b guide but not the HCV-1a guide.

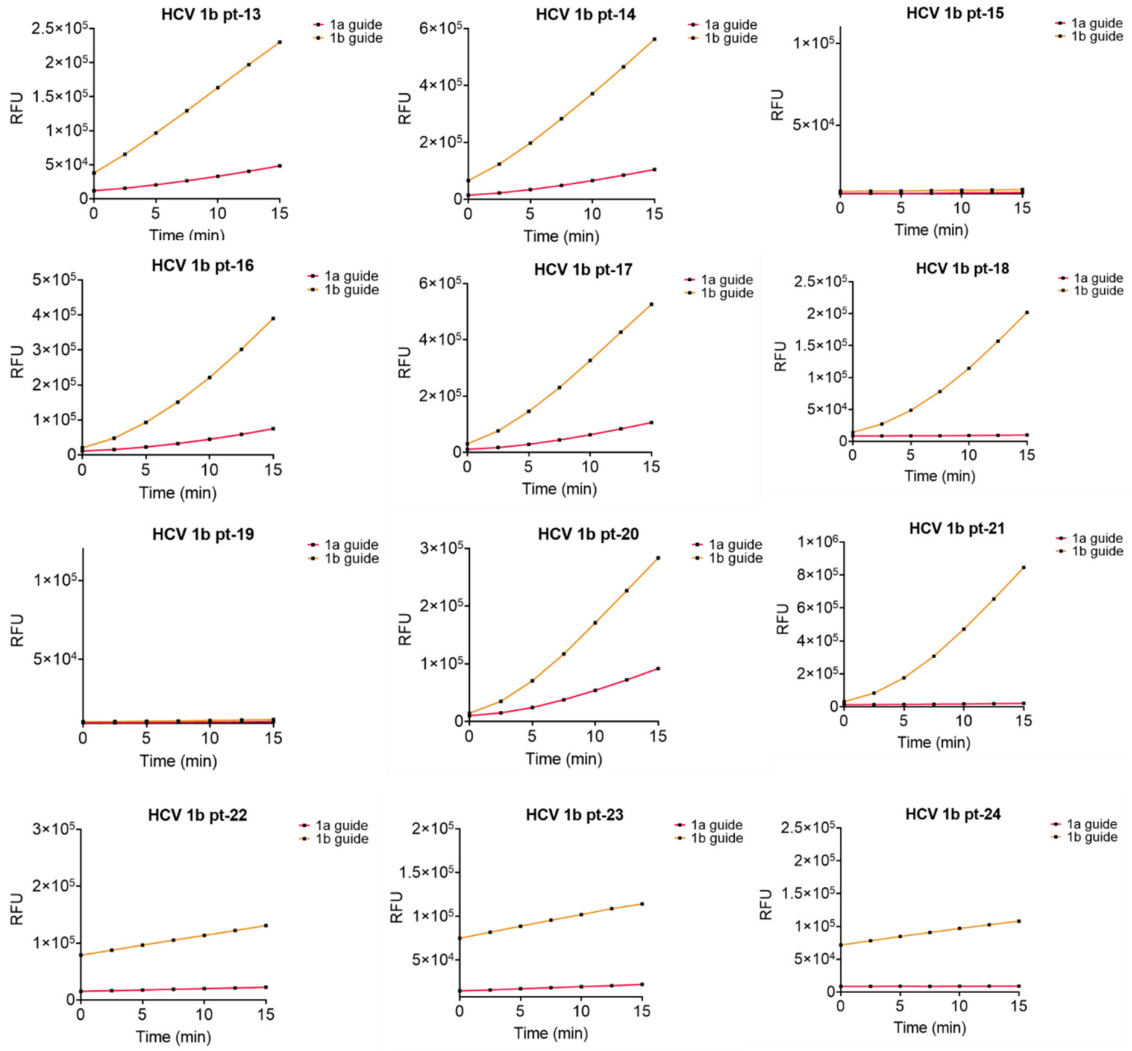


Fig. S13 continued

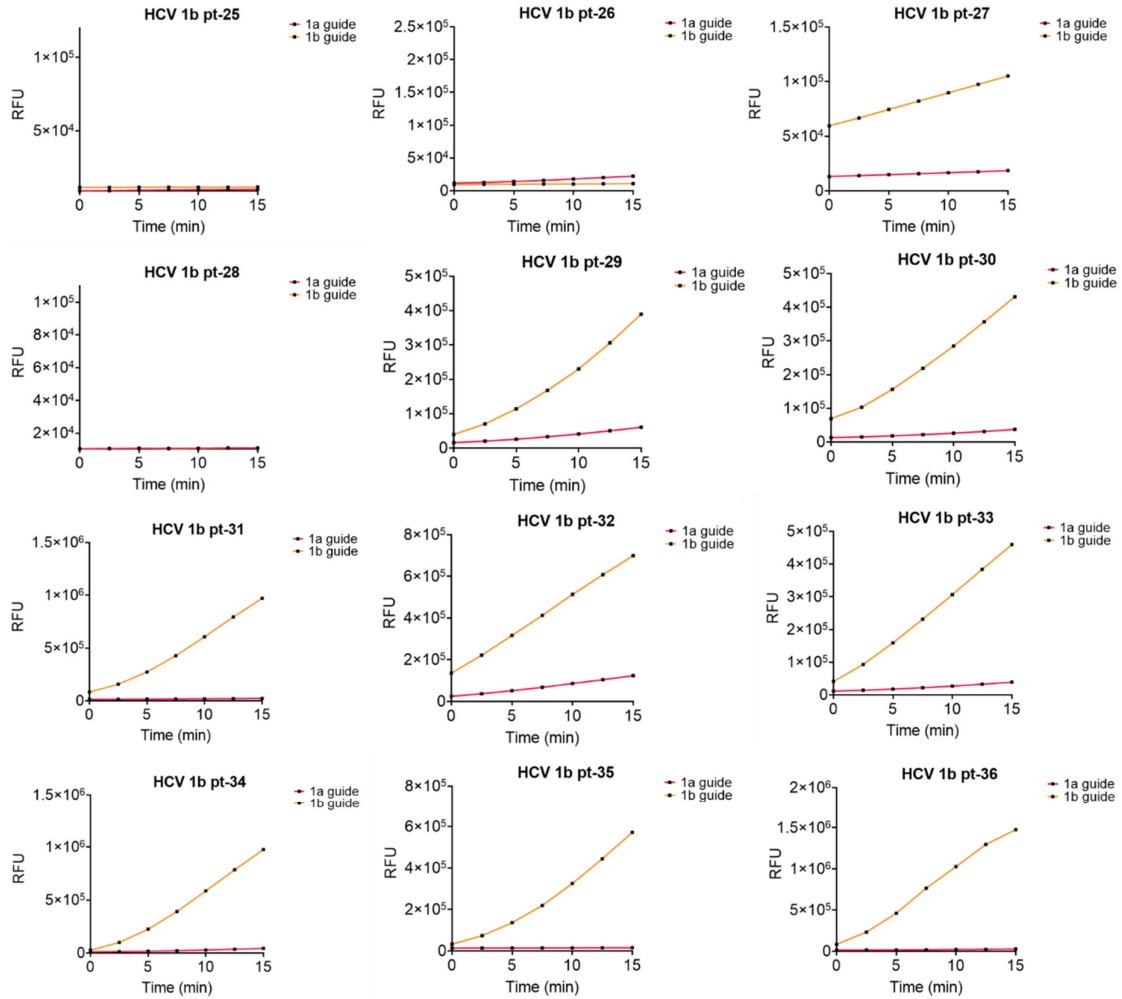


Fig. S13 continued

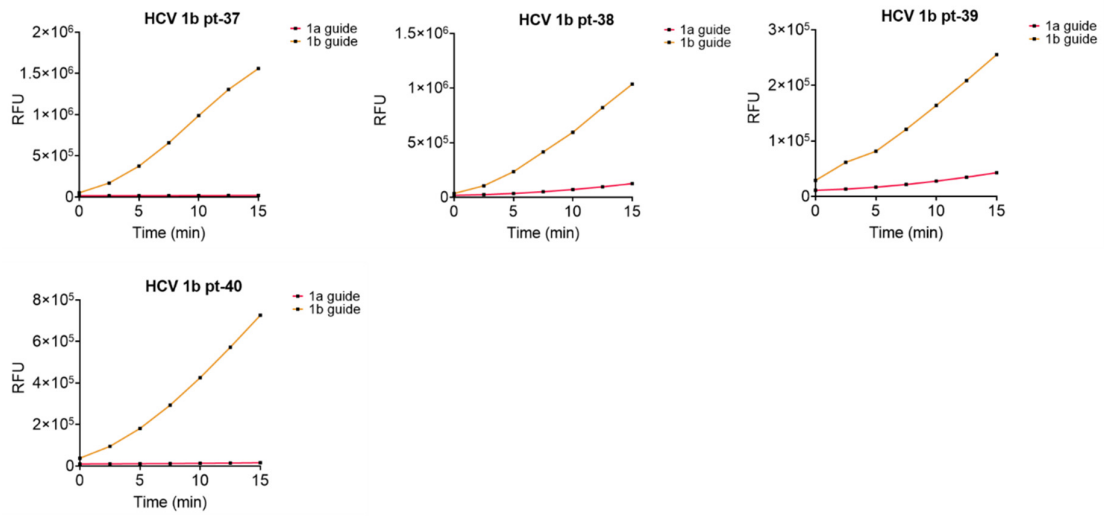


Fig. S13 continued