

HOLISTIC ANTENATAL CARE DURING PREGNANCY: A SYSTEMATIC REVIEW.

Violet Manonyana Chewe^{1*}, Johanna Mmabojalwa Mathibe-Neke²

1 Faculty of Health Sciences, Department of Advance Nursing Sciences, University of Venda, Thohoyandou, South Africa, **2** College of Human Sciences, Department of Health Studies, University of South Africa, Pretoria, South Africa

☒ These authors contributed equally to this work.

‡ These authors also contributed equally to this work

* Violet.Chewe@univen.ac.za

Abstract

Background

Pregnancy outcomes are determined by the type of antenatal care a woman receives. The purpose of this review was to conduct a critical analysis of the literature on the provision of holistic antenatal care to pregnant women.

Design

A systematic research review was employed for the study.

Data Sources

A search of EBSCO Host, Google Scholar, Sabinet, and Science Direct databases was performed. After reviewing 150 paper titles and abstracts, 14 studies were found to meet the final criteria for quality assessment. Included were only English-language papers published from 2020 to 2023.

Eligibility Criteria for Selecting Studies

Quantitative, Qualitative, Review studies, Quasi-experimental, and cohort studies. Papers had to include adults (>18 years old), and pregnant women attending antenatal care at different health facilities worldwide and published in peer-reviewed journals from 2020 onwards.

Results

Four of the fourteen analysed articles focused on socioeconomic status, three on staff attitudes, age, parity, and religion, and one on infrastructure. Six studies focused on midwives' role in providing holistic antenatal care. These factors impacted pregnant women's ability to

receive comprehensive antenatal care. Three studies on woman-centered care and three on focused antenatal care have also come to light to enhance midwives' capacity to deliver comprehensive prenatal care.

Conclusion

Healthcare facilities should offer an environment where communities may learn about the importance of antenatal care visits and how to ensure pregnant women obtain acceptable treatments.

Implications

This study demonstrates the necessity for healthcare providers to be resourceful about offering holistic antenatal care to pregnant women to enhance outcomes for both mothers and newborns.

Keywords: Antenatal; Holistic, Care, Pregnancy.

Introduction

Holistic antenatal care is the level of excellence in providing antenatal care to pregnant women to lower maternal mortality [1]. Antenatal care (ANC) is the care given to pregnant women by qualified healthcare professionals to provide the best possible health outcomes for both mother and child throughout pregnancy [2].

Other countries like the Netherlands have holistic midwives who offer integrated ANC to pregnant women [3]. A holistic midwife is a single midwife who interacts with a woman's physical, psychological, and emotional factors during her pregnancy and birthing [4]. Moreover, [3] proposes that holistic midwives be utilized for high-quality ANC due to their inclusive services. The services include good relationships with women, mutual respect, and trust.

According to the findings from the study conducted in Bandung, Indonesia, by [5], holistic antenatal care lowers maternal anxiety levels in pregnant women. [5] further asserts that holistic ANC provides pregnant women with comprehensive psychological, emotional, social, and spiritual care. According to [6], pregnant women use antenatal care services for quality, which can be attained when provided holistically. On the other hand, [7] states that providing holistic ANC in particular situations can be challenging as some women attend ANC appointments solely to reserve a birthing location. Therefore, in such cases, women do

not understand why it is crucial to attend ANC; hence, they end up skipping their scheduled follow-up appointments.

In a remote Tanzanian district, the quality of antenatal care was evaluated from a holistic angle [8]. The results showed that regular ANC services function inconsistently, partially accounted for by insufficient resources. Taking an acceptable history, paying attention to the client's well-being, doing a basic physical examination, and providing proper counseling and education all displayed poor performance. Embracing holistic antenatal care services may benefit pregnant women and their unborn children.

As of the 2021 report, the Maternal Mortality Ratio (MMR) stood at 148.1 maternal deaths per 100,000 live births [9]. This is a 47% increase in maternal mortalities from 2019 and a further increase from the MMR of 126.1 in 2020. This demonstrates that in 2021 and 2020, the sharp fall between 2010 and 2019 has reversed. There was an increase in MMR from 2019 in every province in South Africa.

The purpose of this review was to identify patterns and conduct a critical analysis of the literature about the provision of holistic antenatal care. While there are many studies regarding antenatal care, this study focuses mainly on holistic antenatal care. Pregnant women should receive holistic ANC, which includes care for their physical, emotional, and spiritual needs [9].

Research question: What factors impact the provision of holistic antenatal care?

Materials and Methods

A systematic review evaluated the factors that impact providing holistic antenatal care to pregnant women. There is no registration for the systematic review protocol.

Eligibility Criteria

Inclusion

Studies were selected for the systematic review if they included adults (>18 years old) who attended antenatal care at public health facilities worldwide. Quantitative, Qualitative, Review, Quasi-experimental, and cohort studies were included. Studies had to have been published in peer-reviewed journals from 2020 onwards. Only articles published in English

were considered for inclusion in the review due to the need for more resources available for translation services.

Exclusion

Grey literature, including conference abstracts, posters, and case reports, were excluded to ensure that only high-quality, peer-reviewed data was used in this systematic review. Published protocols with results were considered.

Information sources

A subject librarian from the University of South Africa (UNISA) assisted with this process. The researcher used the following search engines to locate appropriate information for the study: EBSCO Host, Google Scholar, Sabinet, and Science Direct on 29 October 2023. The reference lists of non-experimental studies discovered through the electronic search and considered relevant to the review topic were also examined to identify relevant articles for inclusion in the next abstract review phase. There was no need for ethics approval because this was a review study.

The following attributes of each study in this review were extracted from the abstracts of the publications: author and year of publication, objective/aim, country, study design, population and sample size, outcomes, and limitations. Refer to Table 2 for the characteristics of the included studies.

Search Strategy

The researchers collaborated with the subject librarian to conduct a thorough literature search on all major electronic databases, including EBSCO Host, Google Scholar, Sabinet, and Science Direct. The studies extracted were those published between 2020 and 2024. The search parameters were antenatal care, holistic, care, and pregnancy to include all possibly relevant papers. The electronic databases used are listed in Table 1. The references of any non-experimental papers included in the search result were screened for relevant experimental studies.

Table 1: Electronic databases searched and the number of results.

DATABASE	PAPERS IDENTIFIED
EBSCO Host,	88
Google Scholar,	07
Sabinet,	40
Science Direct	15
Total	150

Selection process

Both authors VM and JM independently read the title and abstract of each paper to identify studies selected for full-text review based on the criteria mentioned above. Experimental studies whose interventions, patient populations, or outcomes could have been clearer based on the abstract, or papers that did not have an abstract available, were also moved on to full-text review for further assessment. Full texts of papers were also screened for mentions of the “Holistic/ quality antenatal care, midwives, pregnant women, quality antenatal care” population for the study. Papers with no references to these words were considered not to include populations of interest and were excluded from the full-text stage of the review. Finally, eligible papers deemed to meet inclusion and exclusion criteria following the full-text review underwent quality appraisal and final inclusion in the systematic review. Any discrepancies were resolved by both the author and the co-author.

The researcher outlined the study flow in the search results using the PRISMA flow chart suggested by [10] (see Figure 1). The search yielded a total of 150 articles. In these papers, the researchers conducted full-text, topic, and abstract screenings; as a result, duplicates were eliminated, and studies that didn't meet the inclusion criteria were disqualified. Ultimately, it was concluded that 14 papers were appropriate for inclusion in the analysis since they addressed the study's purpose, focus, and review question.

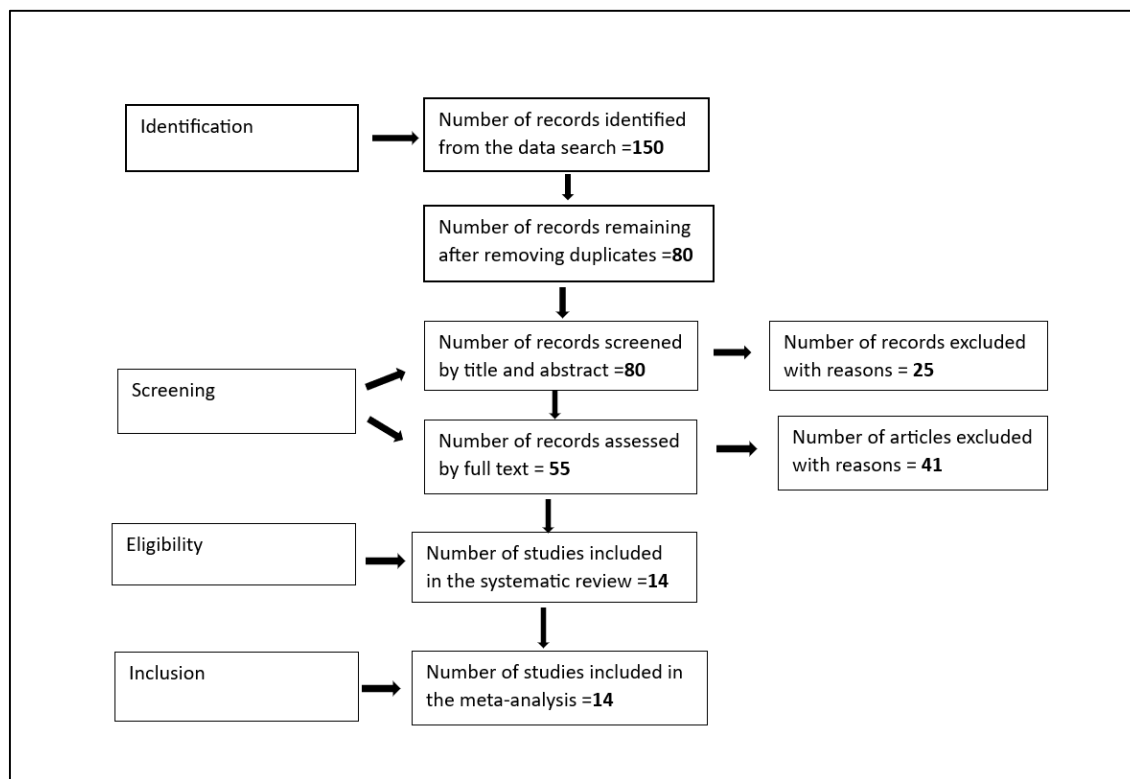


Fig 1: Screening process flow chart

Data collection process

The author and the co-author independently extracted relevant information from each paper. Where information still needed to be included after reviewing those sources, the papers were excluded from the review.

Data Items

Specific study-related outcomes were extracted from each paper by applying the data from the original publication. Data on the study demographic, participant number, holistic/high-quality prenatal care, and outcomes reported in the original study were collected from each publication to create Table 2.

Table 2: Characteristics of the studies included

Author and year	Aim/Objective	Country	Study design	Population and sample size	Outcomes	Limitations
Yehualash	To	Ethiopia	Secondary	2019	A woman's place of	A

et et al 2021,	determine the factors related to the best ANC visits for Ethiopian pregnant women		data analysis	Ethiopian Mini Demographic and Health Survey (EMDHS)	residence, financial status, media exposure, education level, and geography are all closely linked with a suitable timing for an ANC visit.	community's and an individual's level factor that contribute to the ideal number of ANC visits aren't demonstrated by the cross-sectional data.
Andegiorgi sh et al 2022,	To explore the variables related to antenatal care (ANC) visits	SSA	Secondary data s analysis using cross-sectional research data.	56 002women aged 15–49 years in Ghana (3224), Kenya (10 981), Malawi (9541), Namibia (2286), Rwanda (4416), Senegal (6552), Tanzania (5536), Uganda (7979) and Zambia	There was a significant difference in the number of ANC visits among the countries under study, with the amount deemed inadequate.	Not stated

				(5487) were analysed		
Kare et al 2021	The purpose of the research was to evaluate the standard of ANC and related factors for pregnant women who were admitted to government institutions	Ethiopia	Cross-sectional study (Quantitative)	372 pregnant women.	The number of antenatal visits, residency, financial status, and educational attainment were all linked to high-quality healthcare.	As the study was conducted at a hospital, probably, the results cannot be applied to all pregnant women in the area.
Ahinkorah et al 2021.	This study examined the relationship between pregnant women seeking prenatal care in a few sub-Saharan African countries and the implementation of the 2016 WHO	SSA	The study solely considered data from the 2018 Sub-Saharan African Demographic and Health Survey.	6761 from Nigeria, 1973 from Mali, 1690 from Guinea, and 1570 from Zambia were considered.	The study demonstrated the impact that healthcare access restrictions have on the use of antenatal care in sub-Saharan African nations.	Most of the queries came from married women; hence, only married women were qualified.

	antenatal care services model.					
Appiah 2022	The study investigated the connections between individual and community factors and early ANC use in Cameroon.	Cameroon	A cross-sectional survey design	4,183 women	Early ANC initiation correlated with individual-level factors (maternal age, economic status, academic success, and religious affiliation), while variations in cluster/community depict influenced early ANC initiation.	In this study, only the association between early ANC utilization and individual and community variables was evaluated
Warri and George 2020.	The study aimed to determine why pregnant women at Nkwena Baptist Health Center delayed starting prenatal care.	Cameroon	Exploratory, qualitative study	Eighteen pregnant women	The time of initiating antenatal care is significantly influenced by sociocultural beliefs and barriers found in health facilities.	Not stated
Seyoum 2022.	The study aimed to identify the factors	Ethiopia	Cross-Sectional Studies.	13 studies	Determinants of antenatal care service satisfaction were the first	One limitation of this analysis was the

	that affect Ethiopian women's satisfaction with antenatal services.				antenatal visit, waiting time to see the practitioner, privacy preservation, courteous treatment, and unplanned pregnancy.	significant differences across the included research.
Hlongwane et al 2021.	The study described the implementation phases and the key indicator monitoring process.	SA	An analysis was conducted on samples of maternity case records from the first year of the modified care model	200 pregnant women	The experiences of South Africa with the modified antenatal care package execution demonstrate that success requires the dedication of all parties involved.	Not stated
Miller et al 2021.	The study investigated the prevalence of PCANC in Rwanda and its contributing factors.	Rwanda	Quantitative data	2150 surveys	The implementation of group care, which would completely restructure the way ANC is delivered, could interfere with delivering essential care elements, particularly those that are person-	was not the study's intention to quantify PCANC specifically.

					centered.	
Swift et al 2021.	The purpose of the study was to evaluate EAC in terms of women's autonomy in making decisions, their level of happiness with care, and how well it reduces their dread of birthing.	Australia	Quasi-experimental controlled trial	32 nulliparous women, 60 usual antenatal care = 92	In general, EAC seemed to be more successful than standard care in lowering birth anxiety, particularly in women who did not attend workshops in addition to prenatal care.	Small and homogenous sample size
Nagineviciute et al 2023.	The study employs patient-reported outcome and experience measures to assess low-risk pregnancies in Lithuania that are cared for by midwives and obstetrician-	Europe	A prospective cohort study design	153 Pregnant women	Healthcare systems can better understand and respond to women's needs and preferences by using patient-centered approaches, which promotes high-quality, woman-centered care.	comparatively small sample size

	gynaecologists					
Konlan et al 2020	The purpose of the study was to evaluate the factors that affect pregnant women's utilization of FANC services.	Ghana	Cross-sectional quantitative study	210 postnatal women	Some postnatal women are unaware of FANC, even though it would assist the health professional in providing information, education, and communication tools, as the results showed.	Not stated
Nwabueze et al 2023,	The purpose of this study was to evaluate pregnant women in Nigeria's knowledge and use of FANC, as well as the factors that affect their use of it.	Nigeria	A cross-sectional design	300 pregnant women	The results of this study hold significant ramifications for formulating interventions and policies related to maternal and child health that will enhance Nigerian women's and children's access to healthcare throughout pregnancy and delivery.	The study was limited to pregnant patients who receive care at public institutions.
Abera et al 2020.	This study sought to evaluate the parameters related to focused	Ethiopia	Cross-sectional study	551 women who gave birth in the last two years	Improve programs that encourage pregnancy planning, shorten travel times to medical facilities,	Not stated

	antenatal care (FANC) attendance in Wolaita Zone, Southern Ethiopia, and the utilization of these services.				and raise pregnant women's knowledge of the advantages of antenatal care.	
--	---	--	--	--	---	--

Study risk of bias assessment

The Revised Cochrane risk-of-bias tool for randomized trials (RoB 2) was used for randomized, controlled trials in the final publication batch [11]. VM and JM evaluated the tool's signaling questions individually to evaluate each paper's quality and bias risk. After the meeting, VM and JM agreed on any differences in their assessments of the quality of the work. Similarly, the overall risk of bias in the quasi-experimental study was calculated using Tables 1 and 2 of the ROBINS-I tool [12]. VM and JM carried out the quality assessment in the process stated above.

Results

The analysis approach of choice was thematic, employing Caulfield's method [13]. It aided the researchers' familiarisation with the data as they read the articles and abstracts. After that, during the coding process, the researchers highlighted terms, phrases, and conclusions that often emerged in the data. The researchers established themes from these, as shown in Table 3, which led to the findings and discussions.

Table 3: Themes and sub-themes

THEMES	SUB-THEMES	ARTICLES
1. Factors affecting the provision of quality antenatal	1.1 Socio-Economic factors	➤ Yehualashet, Seboka, Tesfa, Mamo, and Seid 2021

care.		<ul style="list-style-type: none"> ➤ Andegiorgish, Elhoumed, Qi, Zhu, and Zeng 2022, ➤ Kare, Gujo & Yote 2021 ➤ Ahinkorah, Ameyaw, Seidu, Odusina, Keetile, and Yaya 2021
	1.2 Marital status, age, parity, and religion	<ul style="list-style-type: none"> ➤ Appiah 2022 ➤ Konlan, Saah, Amoah, Doat, Mohammed, Abdulai, & Konlan 2020 ➤ Warri & George 2020
	1.3 Staff attitude	<ul style="list-style-type: none"> ➤ Warri and George 2020, ➤ Seyoum 2022
	1.4 Infrastructure	<ul style="list-style-type: none"> ➤ Hlongwane, Bozkurt, Barreix, Pattinson, Gülmezoglu, Vannevela & Tunçalp 2021.
2. The role of midwives in providing holistic antenatal care	2.1 Woman-Centred Approach	<ul style="list-style-type: none"> ➤ Miller, Afulani, Musange, Sayingoza, and Walker 2021 ➤ Swift, Zoega, Stoll, Avery, and Gottfreðsdóttir 2021 ➤ Nagineviciute, Bartuseviciene, & Blazeviciene 2023.
	2.2 Focused Antenatal Care	<ul style="list-style-type: none"> ➤ Konlan, Saah, Amoah, Doat, Mohammed, Abdulai, & Konlan 2020, ➤ Nwabueze, Okeke, Nwebo, Nwondo, Nwekpa & Nwaiwu 2023, ➤ Abera, Asseffa, Obsa, Balla, and Koyira 2020.

Discussion

Socioeconomic disparities in terms of ANC services impact certain localities. For example, financial and geographical barriers make it difficult for American doctors to provide women with the antenatal care they require [14]. The study by [15] claims wealthier women are advantaged as they can pay and access healthcare services. This demonstrates how income, education, and residence location can contribute to disparities in access to ANC services. According to [16], women living in rural Sub-Saharan nations are more likely to receive substandard ANC due to low incomes and a location of residence. The study by [17] found additional socioeconomic determinants, such as a husband's acceptance. Despite the obstacles mentioned, Muslim pregnant women in Nigeria receive early ANC timing [17].

Maternal age, parity, and marital status appear to impact the use of ANC services in certain cases. [18] claims that young, single women are hesitant to seek antenatal care when pregnant. Additional research reveals that women with high parity are reluctant to use antenatal services due to a history of healthy pregnancies, lack of need, and other factors [19]. Quality ANC is additionally related to other factors, such as the woman's behavioral and psychological well-being and the number of antenatal visits she had [1].

In most African countries, including South Africa, women hold a range of religious beliefs, which could influence how they use ANC services. According to [20, 17], pregnant women who experience stigma associated with their pregnancy, fear of witchcraft, cultural beliefs, and problems with family support are less likely to use antenatal services.

Healthcare personnel should always have a welcoming approach, according to one of the ministerial goals of South Africa [21]. According to [20], concerns were made about the staff members' lack of courtesy. A further obstacle that has been identified as discouraging pregnant women from accessing ANC is the staff members' disrespect towards them [22]. As such, midwives should welcome pregnant women positively and use the appointment system to commence making amends.

The results additionally indicated that pregnant women are more reluctant to be treated at healthcare facilities with inadequate, clean, or well-kept amenities. To provide pregnant women in SA with holistic ANC and lower the rate of maternal and newborn mortality, commitment and resource allocation are required [23]. Health facilities should regularly

maintain their infrastructure, as it is mentioned as another factor that contributes to pregnant women's poor attendance and inadequate ANC.

Woman-centered care prioritizes each woman's needs, goals, and aspirations ahead of those of the institution or the midwifery profession. According to [24], women reported feeling disrespected and leaving ANC confused or with questions. Enhancing ANC was considered a means of improving the standard of ANC. According to a study conducted in 2021 by [25], women who received better ANC were more inclined than those who received traditional care. Furthermore, woman-centered approaches enable healthcare systems to identify and address the needs and preferences of women, encouraging the provision of high-quality ANC [26]. Given this, delivery anxiety was much reduced by improved ANC as compared to standard treatment.

The World Health Organization created focused antenatal care (FANC), a novel type of ANC, in 2001 with the goal of using it in underdeveloped countries [19]. While a pregnant woman participates in FANC, she attends at least four scheduled ANC visits. She receives all comprehensive packages from registered healthcare practitioners recommended by the World Health Organization [2]. The quality of services rather than their quantity matters under this strategy.

Although the overall ANC use might have seemed adequate, the strategy needed to be more comprehensive, targeted, and consistent with current norms. For example, [27] demonstrates how inadequately pregnant women use FANC. Furthermore, according to [28], there is little knowledge about the method in pregnant women. Thus, the emphasis of antenatal treatment continues to be on clinical evaluation and regular clinic visits, despite recognizing the importance of FANC.

Strength and limitations

The authors VM and JM are experts in midwifery care who are currently practicing in academia, with antenatal care as their niche area of research. The analysis considered papers from international, Sub-Saharan African, African, and South African publications. The study was limited by current articles that matched the inclusion criteria.

Conclusion

The systematic review identified issues affecting pregnant women's access to holistic ANC. These include facility infrastructure, staff attitudes, age, parity, religion, and socioeconomic status. Nevertheless, other research acknowledged FANC and woman-centered care as ways to improve midwives' ability to provide holistic ANC. It might make sense for healthcare institutions to provide a setting where residents are informed about the crucial nature of ANC consultations and how they can ensure that pregnant women obtain safe services.

Acknowledgment

The researchers' independent research from antenatal and maternal health research studies is presented in this article. Therefore, only writers' opinions and points of view are expressed.

Supporting information

S1 File.
(ZIP)

Funding

There was no funding for the study.

Author contribution

VM and JM were both responsible for conceptualization, data curation, methodology, analysis writing of the draft, review, and manuscript editing.

References

1. Kare, AP, Gujo, AB and Yote, NY. 2021. Quality of antenatal care and associated factors among pregnant women attending government hospitals in Sidama Region, Southern Ethiopia. *SAGE Open Medicine* Volume 9: 1–8. <https://journals.sagepub.com/doi>.
2. World Health Organisation. 2016. *New WHO antenatal care model-quality worth paying for?* <https://www.thelancet.com>. Vol 388 November 26, 2016.
3. Hollander, M, de Miranda, E, Vandebussche, F, van Dillen, J and Holten, L. 2019. Addressing a need. Holistic midwifery in the Netherlands: A qualitative analysis. *Plos One*. <https://journals.plos.org/plosone/article?id=10.1371/journal.pone.0220489>.

4. Bass, MJ, Creedy, ED, Sweet, L, Donellan-Fernandez, R & Sidebotham, M. 2022. P14 - Weaving Holistic Reflection within Midwifery Education and Practice. *Woman and Birth* Vol 35 (1) September 2022. <https://www.sciencedirect.com/science/article>.
5. Rizki, F. 2022. Application of antenatal care with a holistic approach in reducing anxiety. *Jurnal Kesehatan Ibu dan Anak* ISSN: 2599-3224 (Online) Vol.16, No.1, July 2022, pp. 33~40.
6. Mphake, EM. 2017. *Factors influencing utilization of Antenatal care among women of childbearing age in Zimbabwe*. Thesis. Google scholar.
7. Ala, SH, S Husain, S, & Husain, S.2021. Reasons for presenting to antenatal care clinics in a sample of Pakistani women and their knowledge of WHO antenatal care package. *European Journal of Midwifery*. <http://www.europeanjournalofmidwifery.eu/>
8. Miltenburg, AS, van der Eem, L, Nyanza, EC, van Pelt, S, Ndaki, P, Basinda, N, Sundby, J. 2017. Antenatal care and opportunities for quality improvement of service provision in resource-limited settings: A mixed methods study. *PLOS ONE* | <https://doi.org/10.1371/journal.pone.0188279> December 13, 2017. <https://journals.plos.org/plosone/article?>
9. South Africa. National Department of Health. 2018. *Saving mothers report 2017 seventh reports on to the confidential inquiry into maternal deaths in South Africa*. Pretoria: Government Printers.
10. Moher, D, Liberati, A, Tetzlaff, J & Altman, DG, 2009. Preferred Reporting Items for Systematic Reviews and Meta-Analyses: The PRISMA Statement. *Annals of Internal Medicine*. <https://www.acpjournals.org/doi/full>.
11. Higgins, JPT, Savović, J, Page, MJ, Elbers, RG, & Sterne, JAC. 2023. Chapter 8: Assessing risk of bias in a randomized trial. In: Higgins JPT, Thomas J, Chandler J, Cumpston M, Li T, Page MJ, Welch VA (editors). *Cochrane Handbook for Systematic Reviews of Interventions* version 6.4 (updated August 2023). Cochrane, 2023. Available from www.training.cochrane.org/handbook.
12. Sterne, JAC, Hernán, MA, Reeves, BC, Savović J, Berkman, ND, Viswanathan, M, Henry, D, Altman, DG, Ansari, MT, Boutron, I, Carpenter, JR, Chan, AW, Churchill, R, Deeks, JJ, Hróbjartsson, A, Kirkham, J, Jüni, P, Loke, YK, Pigott, TD, Ramsay, CR, Regidor, D, Rothstein, HR, Sandhu, L, Santaguida, PL, Schünemann, HJ, Shea, B, Shrier, I, Tugwell, P, Turner, L, Valentine, JC, Waddington, H, Waters, E, Wells, GA, Whiting, PF, & Higgins, JPT. [ROBINS-I: a tool for assessing risk of bias in non-randomized studies of interventions](https://doi.org/10.1136/bmj.i4919). *BMJ* 2016; 355; i4919; doi: 10.1136/bmj.i4919.

13. Caulfield, J. 2019. How to Do Thematic Analysis. Scientific Research. <https://www.scribbr.com/methodology/thematic-analysis/>
14. Maternity Care in the United States. 2020. National partnership for women & families | issue brief |
15. Yehualashet, DE, Seboka, BT, Tesfa, GT, Mamo, TT & Seid, E. 2021. Determinants of Optimal Antenatal Care Visit Among Pregnant Women in Ethiopia: a Multilevel Analysis of Ethiopian Mini Demographic Health Survey 2019 Data. *Research Square*. <https://www.researchsquare.com/article>
16. Andegiorgish, AK, Elhoumed, M, Qi, Q, Zhu, Z and Zeng, L. 2022. Determinants of antenatal care use in nine sub-Saharan African countries: a statistical analysis of cross-sectional data from Demographic and Health Surveys. *Biomedical Journal* 2022 Feb 11;12(2): e051675. <https://pubmed.ncbi.nlm.nih.gov/35149562/>
17. Ahinkorah, BO, Ameyaw, EK, Seidu, A, Odusina, EK, Keetile, M & Yaya, S. 2021. Examining barriers to healthcare access and utilization of antenatal care services: evidence from demographic health surveys in sub-Saharan Africa. *BMC Health Services Research* (2021) 21:125. <https://bmchealthservres.biomedcentral.com/articles>.
18. Appiah, F.2022. Individual and community-level factors associated with early initiation of antenatal care: Multilevel modelling of 2018. Cameroon Demographic and Health Survey. *Plos One*. <https://journals.plos.org/plosone/article>.
19. Konlan, KD, Saah, JA, Amoah, RM, Doat, AR, Iddrisu Mohammed, I, Abdulai, JA, Konlan, KD. 2020. Factors influencing the utilization of Focused antenatal care services during pregnancy, a study among postnatal women in a tertiary healthcare facility, Ghana. *Nursing Open*. 2020; 7:1822–1832. [Wileyonlinelibrary.com/journal/nop2](https://www.wileyonlinelibrary.com/journal/nop2).
20. Warri, D & George A. 2020. Perceptions of pregnant women of reasons for late initiation of antenatal care: a qualitative interview study. *BMC Pregnancy and Childbirth* (2020) 20:70. <https://bmcpregnancychildbirth.biomedcentral.com/articles>.
21. South Africa. 2011. *National Core Standards for Health Establishments in South Africa National Department of Health 2011* “. Pretoria: Government printers.
22. Seyoum, K. 2022. Determinants of Antenatal Care Service Satisfaction among Women in Ethiopia: A Systematic Review and Meta-Analysis. *Obstetrics and Gynecology International* Volume 2022 P1-10. <https://www.hindawi.com/journals>

23. Hlongwane, TM, Bozkurt, B, Barreix, MC, Pattinson, R, Gülmezoglu, M, Vannevela, V & Tunçalp, Ö. 2021. Implementing antenatal care recommendations, South Africa. *Bull World Health Organ* 2021; 99:220–227. <https://www.ncbi.nlm.nih.gov/pmc/articles>.
24. Miller, P, Afulani, P, Musange, S, Sayingoza, F and Walker, D. 2021. Person-centered antenatal care and associated factors in Rwanda: a secondary analysis of program data. *BMC Pregnancy and Childbirth* (2021) 21:290 <https://doi.org/10.1186/s12884-021-03747>
25. Swift, EM, Zoega, H, Stoll, K, Avery, M and Gottfreðsdóttir, H. 2021. one-to-one and group Antenatal Care models to increase childbirth education and address childbirth fear. *Women and Birth. Volume 34, Issue 4*, July 2021, Pages 381-388. Elsevier.
26. Nagineviciute, M, Bartuseviciene, E, and Blazeviciene, A. 2023. Woman-Centered Care: Standardized Outcomes Measure. *Medicina* 2023, 59, 1537. <https://doi.org/10.3390/medicina59091537>.
27. Abera, A, Asseffa, NA, Obsa, MS, Balla, ET, Koyira, MM. 2020. Utilization of Focused Antenatal Care Service and Associated Factors among Women in Southern Ethiopia. *International Journal of Advanced Medical and Health Research* | Published by Wolters Kluwer – Medknow.
28. Nwabueze, AO, Okeke, CC, Nwebo, OO, Nwondo, LA, Nwekpa, WC and Nwaiwu, PI. 2023. Assessing focused antenatal care awareness and Utilization Among Pregnant Women in Enugu State, Nigeria: A Cross-Sectional Survey. *Cureus* 15(5): e38403. <https://www.ncbi.nlm.nih.gov/pmc/articles/PMC10231945/>