

1 Major Articles

2 **Influenza vaccine effectiveness against hospital-attended**

3 **influenza infection in 2023/24 season in Hangzhou, China**

4

5 Hao Lei^{1#}, Beidi Niu^{1#}, Zhou Sun², Yaojing Wang³, Xinren Che²,

6 Shengqiang Du^{1,4}, Yan Liu², Ke Zhang⁵, Shi Zhao^{6,7,8}, Shigui Yang¹, Zhe

7 Wang^{2*}, Gang Zhao^{2*}

8

9 ¹School of Public Health, Zhejiang University School of Medicine,

10 Hangzhou, P.R. China

11 ²Hangzhou Disease Prevention and Control Center, Hangzhou, P.R.

12 China

13 ³School of Economics, Peking University, Beijing, P.R. China

14 ⁴Wuxing Center for Disease Control and Prevention, Huzhou, P.R. China

15 ⁵Hangzhou First People's Hospital, Hangzhou, P.R. China

16 ⁶School of Public Health, Tianjin Medical University, Tianjin, China

17 ⁷Tianjin Key Laboratory of Environment, Nutrition and Public Health,

18 Tianjin Medical University, Tianjin, China

19 ⁸MoE Key Laboratory of Prevention and Control of Major Diseases in the

20 Population, Tianjin Medical University, Tianjin, China

21 # Contributed equally

22 * Corresponding author

23

24 **Abstract**

25 **Background:** From 2020, influenza activities were largely affected by
26 the coronavirus disease (COVID-19) pandemic at the global scale. The
27 B/Yamagata lineage has become extinct since 2020, raising concerns
28 regarding the quadrivalent influenza vaccine. Evaluating vaccine
29 effectiveness (VE) against influenza infections is important to guide
30 future influenza vaccine programs.

31 **Methods:** A test-negative case-control study was conducted in five
32 tertiary hospitals in Hangzhou, the capital city of Zhejiang province,
33 China. Hospital-attended patients aged >6 months who presented with
34 influenza-like illness (ILI) from October 1, 2023 to March 31, 2024 were
35 enrolled in this study. The VE was estimated using multivariate logistic
36 regression models, adjusted by sex, age, influenza detection methods and
37 influenza testing timing.

38 **Results:** In total, 157291 hospital-attended ILI participants were enrolled.
39 56704 (36%) were tested positive for influenza virus. The adjusted
40 estimates of overall VE against any hospital-attended influenza infection
41 was 48% (95% Confidence interval [CI]: 46%-51%). The overall VE of
42 trivalent inactivated influenza vaccine (IIV3) was 59% (95% CI:
43 50%-66%), followed by trivalent live attenuated vaccine (LAIV3)
44 (VE=53%, 95% CI: 42%-62%) and quadrivalent inactivated influenza

45 vaccine (IIV4) (VE=47%, 95% CI: 45%-50%). IIV3 provided even much
46 better protection against hospital-attended influenza B infection than IIV4
47 (VE=87% (95% CI: 81%-92%) for IIV3 versus VE=53%, 95% CI:
48 50%-57% for IIV4).

49 **Conclusions:** The influenza vaccine provided moderate protection
50 against influenza infection in the 2023/24 season in Hangzhou, China,
51 during a massive epidemic. The results supported the World Health
52 Organization recommendation regarding the exclusion of B/Yamagata
53 lineage antigen in quadrivalent influenza vaccines in 2023.

54 **Keywords:** Vaccine effectiveness; seasonal influenza; test-negative study;
55 influenza B; IIV3.

56

57

58 **Introduction**

59 Influenza vaccination is the most effective way to prevent influenza
60 infection [1]; however, the influenza vaccine effectiveness (VE) can vary
61 considerably from year to year [2]. From 2020, the COVID-19 pandemic
62 greatly disturbed influenza activities [3, 4]. In the 2023/24 season, a sharp
63 increase in influenza activities was observed in China [5]. In addition, the
64 B/Yamagata lineage became extinct in 2020, raising concerns regarding
65 the quadrivalent influenza vaccine situation [6]. In September 2023, the
66 World Health Organization (WHO) proposed that the inclusion of a B/
67 Yamagata lineage antigen in quadrivalent influenza vaccines is no longer
68 warranted, and every effort should be made to exclude this component as
69 soon as possible. [7]. Thus, evaluation of effectiveness of trivalent and
70 quadrivalent influenza vaccines, especially the quadrivalent influenza
71 vaccine, in the years without the B/Yamagata lineage has become
72 significant. Globally, several studies have evaluated early or interim
73 influenza VE after the COVID-19 pandemic [8-11]. However, to the best
74 of our knowledge, no study had estimated the influenza VE for the entire
75 flu season in 2023/24. As the timing of influenza vaccination plays a role
76 in estimating its effectiveness [12], the influenza VE during the entire flu
77 season may differ from the early or interim VE. To the best of our
78 knowledge, no study has compared VE between trivalent and

79 quadrivalent influenza vaccines in the 2023/24 season.

80

81 Since 2020, Zhejiang Province has provided free influenza vaccines to
82 older adults aged >70 years [13]. This program provided an opportunity
83 to evaluate the effectiveness of influenza vaccination policies in the real
84 world. Recently, three types of influenza vaccines have been used in
85 China: trivalent inactivated influenza vaccine (IIV3), quadrivalent
86 inactivated influenza vaccine (IIV4), and trivalent live attenuated vaccine
87 (LAIV3) [14]. For the trivalent influenza vaccine, in the 2023-2024
88 season, B/Victoria was used [15], and LAIV3 was used only in children
89 aged 3-14 years.

90

91 Isolation of the virus and testing using real-time reverse-transcription
92 polymerase chain reaction (RT-PCR) is adopted as the gold standard
93 reference method for the diagnosis of the influenza [16]. And a
94 test-negative case-control study design has been widely used to evaluate
95 influenza VE [17]. However, small sample sizes and large ranges of the
96 95% confidence intervals (CIs) of the estimated VE have limited the
97 robustness of the results, especially in China, with a relatively low
98 influenza vaccination rate, which was approximately 1.5%-2.2% before
99 the COVID-19 pandemic [18] and slight increased after the pandemic to
100 3.16% in 2020/21 season and 2.47% in 2021/22 season [19]. Although

101 their sensitivity is relatively low, commercially available rapid antigen
102 detection tests have the advantage of providing results much more
103 quickly [16] and have been more widely used in hospitals in China. Thus,
104 the large number of influenza-like illness (ILI) cases identified by antigen
105 detection provided the possibility of conducting a robust VE evaluation
106 and separate analysis of VE in subgroups in more detail. In addition, to
107 the best of our knowledge, the impact of these two influenza detection
108 methods on VE remains unknown.

109

110 In this study, we performed a test-negative case-control study to estimate
111 the effectiveness of three different types of influenza vaccines against
112 influenza infection in the 2023/24 season in Hangzhou city, China, during
113 a period of massive influenza epidemic. We aimed to compare VE
114 between three types of influenza vaccines (IIV3, IIV4, and LAIV3), and
115 different age groups.

116

117 Methods

118 Study population

119 Samples were collected from five tertiary hospitals: First People's
120 Hospital of Hangzhou, Second People's Hospital of Hangzhou, First
121 People's Hospital of Linping District, Zhejiang Xiaoshan Hospital, and
122 First People's Hospital of Xiaoshan District. Data were collected from

123 October 1, 2023, to March 31, 2024, based on the seasonality of influenza
124 epidemics in Zhejiang Province [20]. Regarding influenza detection,
125 physicians were required to specify on the laboratory requisition form
126 that the patient exhibited symptoms consistent with ILI. However, there is
127 currently no standardized case definition of ILI [8]. Each month,
128 individuals seeking medical attention for respiratory diseases with fever,
129 accompanied by symptoms of cough and sore throat, and undergoing
130 influenza testing, were enrolled in the study across the five healthcare
131 institutions.

132

133 Eligible participants were patients with ILI who visited these five sentinel
134 hospitals and were older than 6 months. Patients with an influenza testing
135 interval exceeding 14 days were eligible for repeated inclusion in the
136 study [2]. Basic demographic information, including sex and age, was
137 collected for each patient with influenza testing, along with the detailed
138 testing date, type of test method, and corresponding test results. Influenza
139 testing methods included influenza nucleic acid detection by RT-PCR and
140 influenza antigen detection. These two detection methods were analyzed
141 individually to test the effect of the detection methods on the evaluation
142 of VE. This study was approved by the Institutional Review Board and
143 Human Research Ethics Committee of the School of Medicine of
144 Zhejiang University (No. ZGL202404-1).

145

146 Vaccination status

147 The virus strains recommended by the WHO in in the 2024 Northern

148 Hemisphere influenza season were A/Victoria/4897/2022 (H1N1)

149 pdm09-like virus, A/Darwin/9/2021 (H3N2)-like virus, and

150 B/Austria/1359417/2021 (B/Victoria lineage)-like virus [15]. Patient

151 vaccination information was obtained from the Zhejiang Province

152 Electronic Medical System using the patient's identity card (ID). This

153 system comprehensively covers vaccination records for the majority of

154 Hangzhou residents, as it was constructed to record COVID-19

155 vaccination status. Patients without vaccination records were excluded.

156 Patient vaccination information from the Zhejiang Province Electronic

157 Medical System included patient ID, vaccine type (IIV3, IIV4, or LAIV3),

158 and vaccine date. This study specifically focused on the details of vaccine

159 administration for 2022 and 2023. In accordance with Zhejiang

160 Province's vaccination policy, vaccination in the current season was

161 defined as influenza vaccination from July 1, 2023, to March 31, 2024.

162 Vaccination in the previous season was defined as influenza vaccination

163 from July 1, 2022, to June 30, 2023. To explore the impact of previous

164 vaccines on VE, the vaccination status of participants was categorized

165 into four types: never vaccinated, vaccinated in both seasons, vaccinated

166 only in the previous season, and vaccinated only in the current season.

167 Individuals were considered immunized if they had received an influenza
168 vaccine for at least 14 days before the specimen collection date [2].
169 Thus, influenza vaccines administered within 14 days before ILI onset
170 were excluded from the analysis. The flu vaccine produced by
171 manufacturers for children under 14 years of age requires two doses to be
172 considered a complete vaccination.

173

174 Statistical analysis

175 We pooled 6 months of data and compared characteristics of cases
176 confirmed through influenza nucleic acid testing and influenza antigen
177 testing with the characteristics of control cases that tested negative for
178 influenza, stratified by virus type, vaccine type, and age group of patients.
179 VE was calculated using a test-negative case-control design as $(1 - OR) \times$
180 100, where OR is the odds ratio, which represents the odds of influenza
181 virus infection among confirmed cases (positive test results) who
182 received vaccination divided by the odds of vaccination among all
183 influenza-negative cases (negative test controls). Adjusted ORs were
184 determined using multivariate logistic regression models with
185 adjustments for sex, age, influenza detection methods and month of
186 influenza testing. Stratified VE estimates were computed based on the
187 age group and influenza virus type. All statistical tests were conducted
188 using a two-sided approach, and significance was defined as $P < 0.05$ or

189 when the lower bound of the 95% CI for VE was greater than 0.
190 Statistical analyses were performed using **R** statistical programming
191 software version 4.2.1 (The R Project for Statistical Computing, Vienna,
192 Austria).

193

194 Sensitivity analysis

195 We conducted sensitivity analysis to assess the robustness of the
196 estimated influenza VE. Firstly, we estimated the influenza VEs based on
197 two influenza detection methods individually to test the impact of
198 influenza detection methods. Second, to test the impact of influenza
199 testing timing, we did not adjust the influenza testing timing or adjust the
200 influenza testing data to estimate the VE individually.

201

202 Results

203 Participant characteristics

204 Data were collected from October 1, 2023, to March 31, 2024, involving
205 a total of 157291 ILI patients tested for influenza ([Table 1](#)). Of which,
206 151,251 were tested by antigen and 6,040 were tested by nucleic acid
207 ([Table S1](#)). The number of ILI patients tested for influenza peaked at
208 week 53, 2023 ([Figure 1](#)). The dominant influenza subtype in the 2 years
209 varied. Influenza A dominated in 2023, whereas influenza B dominated in
210 2024 ([Figure 1](#)). The overall influenza positivity rate was 36% in the ILI

211 patients during the study period (Table 1), and the influenza positivity
212 rates peaked at week 52 in 2023 at 49.9% (5,798/11,629) (Figure 1). By
213 the end of this study, March 31, 2024, influenza activities also almost
214 ended in Hangzhou (Figure 1). The weekly influenza positive rates of two
215 detection methods were highly related (Pearson $r=0.94$, $P < 0.001$)
216 (Figure S1). In the ILI patients, female was a little more than male
217 (53.6% versus 46.4%). And people with the age between 18-59 years
218 accounted for the highest proportion, comprising 50.4%. The overall
219 influenza vaccine coverage rate was 7.1% (Table 1), with a coverage rate
220 of 4.5% for positive cases and 8.6% for negative cases. The influenza
221 vaccine coverage rate in the nucleic acid-tested patients was higher than
222 that in the antigen-tested ILI patients (13.7% VS 6.8%) (Table S1), the
223 main reason could be the much higher percentage of 70+ old people in
224 the acid-tested participates than that in the antigen-tested patients (19.8%
225 VS 1.14%), and higher vaccine coverage rate in old people (44.8% VS
226 21.7%) (Table S2). For these people who vaccinated in the 2023/24
227 season, the majority opted for IIV4, accounting for 86.3%, followed by
228 IIV3 (8.8%) and LAIV3 (4.9%). And for these who vaccinated IIV3,
229 most of them were older people with age more 70 years because the IIV3
230 influenza vaccines administered to older adults were free (Table S3). For
231 people who were vaccinated in 2023-2024, the period between the
232 influenza test date and the influenza vaccination date ranged from 15 to

233 249 days with a median of 97 days ([Figure S2](#)).

234 Overall VE

235 After adjustment for potential confounders, the estimated overall

236 influenza VE against hospital-attended influenza infection in the 2023/24

237 season was 48% (95% confidence interval (CI): 46%-51%) ([Figure 2](#)).

238 VE estimates were consistent between subjects using two influenza virus

239 testing methods: 48% (95% CI: 46%-51%) for antigen-tested subjects,

240 and 55% (95% CI: 44%-63%) for nucleic acid-tested subjects ([Figure S3](#)).

241 However, because of the much larger number of patients detected by

242 antigen testing, the estimated 95% CI of VE was much narrower. In

243 addition, without adjusting the influenza testing timing or adjusted by the

244 influenza testing date also had very limited impact on estimating the

245 overall VEs ([Figure S4](#)). The overall VE of IIV3 was highest (VE=59%,

246 95% CI: 50%-66%), followed by LAIV3 (VE=53%, 95% CI: 42%-62%)

247 and IIV4 (VE=47%, 95% CI: 45%-50%) ([Figure 2](#)). Adjusted VE was

248 65% for children aged 6 months to 2 years, 52% for people aged 18-59

249 years, 78% for old adults aged 60-69 years, and 28% for people aged

250 above 70 ([Figure 2](#)). The VE against hospital-attended influenza B

251 infection (VE=57%, 95% CI: 54%-60%) was much higher than that

252 against influenza A infection (VE=38%, 95% CI: 34%-42%). ([Figure 2](#)).

253

254

255 VE by influenza subtype, vaccine type and age group

256 Overall, influenza vaccine provided better protection against
257 hospital-attended influenza B infection than against influenza A infection
258 in 2023/24 season in Hangzhou. IIV3 provided much better protection
259 than IIV4 against hospital-attended influenza B infection ([Figure 3](#)). The
260 adjusted VE of IIV3 against influenza B infection was 87% (95% CI:
261 81%-92%), much higher than that of IIV4 against influenza B infection
262 (VE=53%, 95% CI: 50%-57%). LAIV3 also provided high protection for
263 children aged 3-17 years against influenza B infection (VE=79%, 95% CI:
264 69%-86%) ([Figure 3](#)). Though adjusted by age and testing timing, IIV4
265 provided best protection against hospital-attended influenza A infection,
266 followed by LAIV3 and IIV3.

267

268

269 VE for different vaccination seasons

270 VE against hospital-attended influenza infection was the highest for those
271 vaccinated only in the current 2023/24 season (VE=52%, 95%
272 CI=49%-55%) ([Figure 4](#)). Vaccination in the previous 2022/23 season
273 could only provide low protection against hospital-attended influenza
274 infection (VE=23%, 95% CI=18%-27%). However, vaccination in the
275 previous 2022/23 season could still provide moderate protection against
276 hospital-attended influenza B infection (VE=34%, 95% CI: 28%-40%).

277 And vaccination in both seasons provided best protection against
278 influenza B infection (VE=59%, 95% CI: 55%-63%). However, for
279 influenza A, vaccination in the current season only provided best
280 protection (VE=47%, 95% CI: 52%-60%) (Figure 4).

281

282

283 Discussion

284 Several studies have evaluated the effectiveness of influenza vaccines
285 after the COVID-19 pandemic. In Denmark, VE was low at 24.8% in
286 non-hospitalized patients aged 7–44 years in the 2021/22 season when
287 there was a sharp increase in influenza detections [9]. In China, in the
288 2022/23 season when there was a slight increase in influenza infections,
289 the estimated influenza VE was 56.3% against influenza infection in
290 medically attended [10]. Several studies have estimated the effectiveness
291 of early or interim influenza vaccines in the 2023-2024 season. In Canada,
292 the estimated early influenza VE was 61% against influenza A H1N1,
293 49% against influenza A H3N2, and 75% against influenza B in the
294 2023/24 season [8]. In the Southern Hemisphere, the estimated interim
295 influenza VE was 51.9% against influenza hospitalization in the 2023/24
296 flu season [11]. In California in the United States, the estimated interim
297 influenza vaccine effectiveness against laboratory-confirmed influenza
298 was 45% among persons aged \geq 6 months [21]. However, to the best of

299 our knowledge, no study has estimated the VE for the entire 2023/24
300 season. As the timing of influenza vaccination plays a role its
301 effectiveness [12], the VE in the entire flu season may differ from the
302 early or interim VE and would be more accurate in estimating the
303 cost-effectiveness of the free influenza vaccination program. In this study,
304 the estimated VE against influenza infection was 48% in the 2023/24
305 season in Hangzhou, China, which was close to the estimated interim VE
306 in the Southern Hemisphere and US in the 2023/24 season [11, 21], And
307 the estimated overall VE was robust to the influenza detection methods
308 and influenza testing timing. The estimated VE in this study was much
309 lower than the estimated early influenza VE in Canada [8], the timing of
310 the studies may play a key role. However, similar to the study results in
311 Canada, our study also found that influenza vaccines provided better
312 protection against influenza B than influenza A in the 2023/24 season.
313
314 Before the COVID-19 pandemic, several studies also had evaluated the
315 influenza VE in China in all age group in the year from 2013 to 2017
316 [23-25]. The estimated VE ranged from 5% (95% CI: -53%-41%) to 47%
317 (95% CI: -20%-77%) in these studies. The observed variations could be
318 due to the relatively small number of ILI patients enrolled in the studies,
319 since the vaccine-effectiveness point estimates always have very wide
320 confidence intervals in these studies. In addition, the influenza positivity

321 rates in the ILI cases in these three studies ranged from 20% to 27%
322 [23-25], much lower than the 36% influenza positivity rate in this study.
323 This may suggest a relative higher VE during massive influenza
324 epidemics, since the overall influenza VE was only 36% from a
325 meta-analysis of the influenza VE before the pandemic in China [26].

326

327 The influenza vaccine coverage was 7.1% in the ILI patients in 2023/24
328 season in Hangzhou, which was much higher than the average influenza
329 vaccine coverage rate in China, i.e., 2.47% in 2021/22 season [19], but
330 was much lower than that in the United States [27]. The increased
331 influenza vaccine coverage rate mainly contributed by the increased
332 influenza vaccine coverage rate in the old people aged more than 70 years,
333 which was 28%, much higher than these in other age groups. However, in
334 Hangzhou in the 2023/24 season, we found that the majority opted IIV4,
335 accounting for 86.3%, only 8.8% of ILI cases vaccinated IIV3. And for
336 these who vaccinated IIV3, most of them were older people with age
337 more 70 years because of the free influenza IIV3 program to them ([Table](#)
338 [S3](#)). In this study, we found IIV3 provided better protection than IIV4
339 against influenza infection, especially against influenza B infection in the
340 2023/24 season (87% versus 52%). The main reason could be that
341 B/Victoria used influenza vaccine components in trivalent influenza
342 vaccine, since B/Yamagata lineage has become extinct [6]. Our results

343 supported the report from WHO about the exclusion of B/Yamagata
344 lineage antigen in quadrivalent influenza vaccines as soon as possible [7].
345 On March 14, 2024, the Centers for Diseases Control and Prevention of
346 the United States. also announced the transition from quadrivalent to
347 trivalent flu vaccines for the 2024-2025 season [22]. Since IIV3 is much
348 cheaper than IIV4, but could provide better protection, the
349 cost-effectiveness of IIV3 could also be much higher than IIV4.

350

351 The findings of this study have the following limitations. First, there was
352 a preference among the population for antigen tests over nucleic acid tests,
353 resulting in a smaller patient sample size for the latter. This has led to an
354 inability to produce highly statistically reliable VE estimates in multiple
355 subgroup analyses. Consequently, VE estimates for patients diagnosed
356 using nucleic acid tests should be interpreted with caution. Second, we
357 did not acquire data on the genetic or antigenic characteristics of the
358 circulating A(H1N1) pdm09 or A(H3N2) strains in Hangzhou. Future
359 research should focus on the antigenicity and genetic characteristics of
360 these viruses to conduct more in-depth studies. Third, there are
361 limitations associated with the use of routine health data collected by
362 hospitals. For instance, the absence of symptomatic status data precludes
363 the determination of whether cases are ILIs. Additionally, because of the
364 reliance on specimen collection dates as proxies for symptom onset dates,

365 the actual date of illness onset for most individuals was likely earlier.
366 This may result in the misclassification of individuals as either
367 influenza-negative or positive. For example, if the vaccination date and
368 the onset of symptoms are close, but there is a long interval before testing.
369 Lastly, other patient information that may influence the effectiveness of
370 influenza vaccines, was not available, such as chronic diseases related to
371 severe influenza. These chronic diseases include cardiovascular diseases,
372 chronic respiratory diseases, neurological disorders, and diabetes [2].

373

374 Conclusion

375 The influenza vaccine provided moderate protection against influenza
376 infection during the massive epidemic in Hangzhou in the 2023/24 season.
377 The large number of patients with an ILI detected by antigen testing made
378 it possible to conduct a detailed separate analysis of influenza VE, such
379 as by vaccine type, age group of patients, and influenza subtype. IIV3
380 provided better protection against hospital-attended influenza infection,
381 especially influenza B. Thus, our study results support the WHO
382 recommendation regarding the exclusion of B/Yamagata lineage antigens
383 in quadrivalent influenza vaccines in September 2023.

384

385 Acknowledgments

386 HL and BN conceived and designed the study. ZS, ZW, KZ, XC and YL

387 collected data. HL and BN wrote the drafts of the manuscript. BN cleaned
388 and analyzed the data. GZ, ZW and HL supervised the study. YW, SZ
389 and SY commented on and revised drafts of the manuscript. HL
390 interpreted the findings. All authors read and approved the final report.

391

392 **Funding**

393 This study was supported by the innovation group on intelligent response
394 to infectious diseases and public health emergencies of School of Public
395 Health, Zhejiang University.

396

397 **Competing interests**

398 All authors declare no competing interests.

399

400 **Data Availability**

401 The data that support the findings of this study are available from the
402 corresponding author upon reasonable request.

403

404 **References**

- 405 1. Paules C, Subbarao K. Influenza. *Lancet*, 2017 ;
406 390(10095):697–708.
- 407 2. Jackson ML, Chung JR, Jackson LA, et al. Influenza vaccine
408 effectiveness in the United States during the 2015–2016 season. *New*

- 409 England Journal of Medicine, 2017 ; 377(6): 534-543.
- 410 3. Lei H, Xu M, Wang X, et al. Nonpharmaceutical interventions used to
411 control COVID-19 reduced seasonal influenza transmission in China.
412 The Journal of infectious diseases, 2020 ; 222(11): 1780-1783.
- 413 4. Lei H, Yang L, Yang M, et al. Quantifying the rebound of influenza
414 epidemics after the adjustment of zero-COVID policy in China.
415 PNAS nexus, 2023; 2(5): pgad152.
- 416 5. Chinese National Influenza Center. Influenza Weekly Report. Week 3,
417 2024. Available at:
418 [https://ivdc.chinacdc.cn/cnic/en/Surveillance/WeeklyReport/2024](https://ivdc.chinacdc.cn/cnic/en/Surveillance/WeeklyReport/202401/t20240125_272252.htm)
419 [01/t20240125_272252.htm](https://ivdc.chinacdc.cn/cnic/en/Surveillance/WeeklyReport/202401/t20240125_272252.htm). Accessed 31 January 2024.
- 420 6. Monto A S, Zambon M, Weir J P. The End of B/Yamagata Influenza
421 Transmission-Transitioning from Quadrivalent Vaccines. The New
422 England journal of medicine, 2024 ; 390(14):1256-1258.
- 423 7. WHO. Recommended composition of influenza virus vaccines for use
424 in the 2024 southern hemisphere influenza season. Wkly Epidemiol
425 Rec 2023; 98: 521-33. Available at:
426 [https://iris.who.int/bitstream/handle/10665/373645/WER9843enfre.p](https://iris.who.int/bitstream/handle/10665/373645/WER9843enfre.pdf)
427 [df](https://iris.who.int/bitstream/handle/10665/373645/WER9843enfre.pdf). Accessed 31 January 2024.
- 428 8. Smolarchuk C, Ickert C, Zelyas N, et al. Early influenza vaccine
429 effectiveness estimates using routinely collected data, Alberta,
430 Canada, 2023/24 season [J]. Euro Surveill, 2024 ; 29(2).

- 431 9. Emborg HD, Vestergaard L S, Botnen A B, et al. A late sharp
432 increase in influenza detections and low interim vaccine effectiveness
433 against the circulating A (H3N2) strain, Denmark, 2021/22 influenza
434 season up to 25 March 2022[J]. *Eurosurveillance*, 2022 ; 27(15):
435 2200278.
- 436 10. Su Y, Guo Z, Gu X, et al. Influenza vaccine effectiveness against
437 influenza A during the delayed 2022/23 epidemic in Shihezi, China[J].
438 *Vaccine*, 2023 ; 41(39): 5683-5686.
- 439 11. Fowlkes A L. Interim Effectiveness Estimates of 2023 Southern
440 Hemisphere Influenza Vaccines in Preventing Influenza-Associated
441 Hospitalizations—REVELAC-i Network, March–July 2023[J].
442 *MMWR. Morbidity and Mortality Weekly Report*, 2023 ; 72.
- 443 12. Worsham C M, Bray C F, Jena A B. Optimal timing of influenza
444 vaccination in young children: population based cohort stud. *BMJ*,
445 2024 ; 384.
- 446 13. Zhang X, Shen P, Liu J, et al. Evaluating the effectiveness and
447 cost-effectiveness of free influenza vaccination policy for older adults
448 in Yinzhou, China: Study protocol of a real-world analyses. *Vaccine*,
449 2023 ; 41(34): 5045-5052.
- 450 14. TWGIV, National Immunization Advisory Committee, Technical
451 Working Group. Technical guidelines for seasonal influenza
452 vaccination in China (2023-2024). *Zhonghua liu xing bing xue za zhi*,

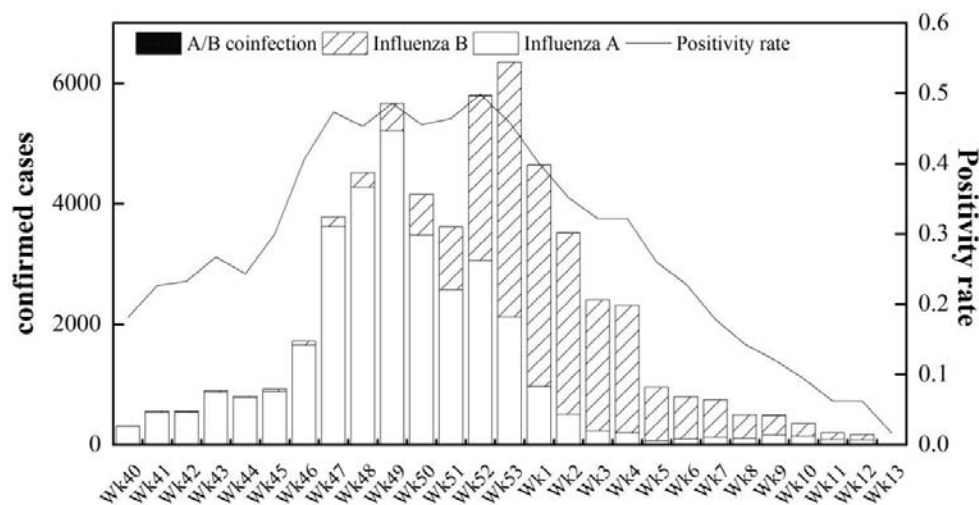
- 453 2023 ; 44(10): 1507-1530.
- 454 15. World Health Organization. Recommended composition of influenza
455 virus vaccines for use in the 2024 northern hemisphere influenza
456 season. 2023. Available at:
457 <https://www.who.int/publications/m/item/recommended-composit>
458 [ion-of-influenza-virus-vaccines-for-use-in-the-2023-2024-northern](https://www.who.int/publications/m/item/recommended-composit)
459 [-hemisphere-influenza-season](https://www.who.int/publications/m/item/recommended-composit). Accessed 31 January 2024.
- 460 16. Ghebremedhin B, Engelmann I, König W, et al. Comparison of the
461 performance of the rapid antigen detection actim Influenza A&B test
462 and RT-PCR in different respiratory specimens. Journal of medical
463 microbiology, 2009 ; 58(3): 365-370.
- 464 17. Fukushima W, Hirota Y. Basic principles of test-negative design in
465 evaluating influenza vaccine effectiveness. Vaccine. 2017 ;
466 35(36):4796-4800.
- 467 18. Yang J, Atkins KE, Feng L, et al. Seasonal influenza vaccination in
468 China: Landscape of diverse regional reimbursement policy, and
469 budget impact analysis. Vaccine. 2016 ; 34(47):5724-5735.
- 470 19. Zhao H, Peng Z, Ni Z, et al. Investigation on influenza vaccination
471 policy and vaccination situation during the influenzaseasons of
472 2020-2021 and 2021-2022 in China. Chinese Journal of Preventive
473 Medicine, 2022 ; 56(11): 1560-1564.
- 474 20. Lei H, Yang L, Wang G, et al. Transmission patterns of seasonal

- 475 influenza in China between 2010 and 2018. *Viruses*, 2022 ; 14(9):
476 2063.
- 477 21. Zhu S. Interim Influenza Vaccine Effectiveness Against
478 Laboratory-Confirmed Influenza—California, October 2023–January
479 2024[J]. *MMWR. Morbidity and Mortality Weekly Report*, 2024 ; 73.
480 22. Centers for Diseases Control and Prevention. Seasonal Flu Vaccines.
481 Available at <https://www.cdc.gov/flu/prevent/flushot.htm>. Accessed
482 26 April 2024.
- 483 23. Qin Y, Zhang Y, Wu P, et al. Influenza vaccine effectiveness in
484 preventing hospitalization among Beijing residents in China,
485 2013–15[J]. *Vaccine*, 2016 ; 34(20): 2329-2333.
- 486 24. Zhang L, Pan Y, Hackert V, et al. The 2015–2016 influenza epidemic
487 in Beijing, China: Unlike elsewhere, circulation of influenza A
488 (H3N2) with moderate vaccine effectiveness[J]. *Vaccine*, 2018 ;
489 36(33): 4993-5001.
- 490 25. Wu S, Pan Y, Zhang X, et al. Influenza vaccine effectiveness in
491 preventing laboratory-confirmed influenza in outpatient settings: a
492 test-negative case-control study in Beijing, China, 2016/17 season[J].
493 *Vaccine*, 2018 ; 36(38): 5774-5780.
- 494 26. Yang X, Zhao H, Li Z, et al. Influenza vaccine effectiveness in
495 mainland China: a systematic review and meta-analysis[J]. *Vaccines*,
496 2021 ; 9(2): 79.

497 27. Centers for Diseases Control and Prevention. Flu Vaccination
498 Coverage, United States, 2022–23 Influenza Season. Available at
499 <https://www.cdc.gov/flu/fluview/coverage-2223estimates.htm>
500 Accessed 28 April 2024.
501
502

503

504



505

506 **Figure 1.** Weekly number of hospital-attended influenza infections and

507 influenza positivity rates in five tertiary hospitals in Hangzhou.

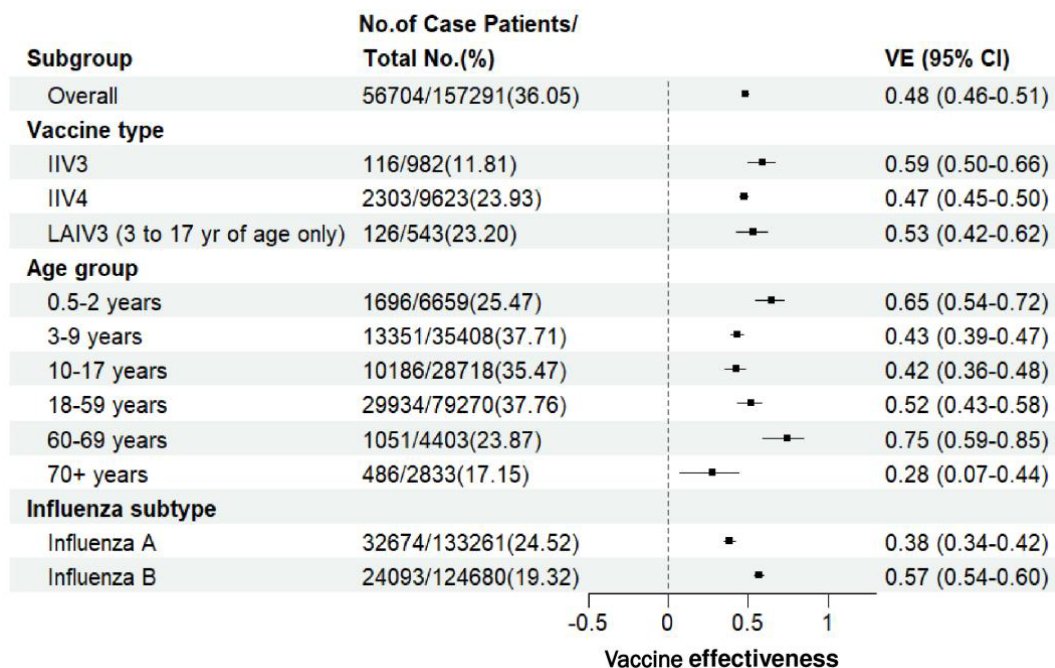
508

509 **Table 1.** Demographic and clinical characteristics of participants who

510 tested positive or negative for influenza virus

Characteristics	Test-positive participants		A/B coinfection	Test-negative participants	Total
	Influenza A	Influenza B			
Total, n (%)	32611	24030	63	100587	157291
Sex, n (%)					
Male	15386 (47.2%)	11624 (48.4%)	29 (46.0%)	45930 (45.7%)	72969 (46.4%)
Female	17225	12406	34 (54.0%)	54657	84322

	(52.8%)	(51.6%)		(54.3%)	(53.6%)
Age group, n (%)					
0.5-2 years	1016 (3.1%)	679 (2.8%)	1 (1.6%)	4963 (4.9%)	6659 (4.2%)
	7138	6190		22057	35408
3-9 years	(21.9%)	(25.8%)	23 (36.5%)	(21.9%)	(22.5%)
	5718	4459		18532	28718
10-17 years	(17.5%)	(18.6%)	9 (14.3%)	(18.4%)	(18.3%)
	17681	12228		49336	79270
18-59 years	(54.2%)	(50.9%)	25 (39.7%)	(49.0%)	(50.4%)
60-69 years	680 (2.1%)	370 (1.5%)	1 (1.6%)	3352 (3.3%)	4403 (2.8%)
70+ years	378 (1.2%)	104 (0.4%)	4 (6.3%)	2347 (2.3%)	2833 (1.8%)
Vaccinated in 2023/34 season, n (%)					
No	31138 (95.5%)	22965 (95.6%)	56 (88.9%)	91984 (91.4%)	146143 (92.9%)
Yes	1473 (4.5%)	1065 (4.4%)	7 (11.1%)	8603 (8.6%)	11148 (7.1%)
Types of Vaccines, n (%)					
IIV3	96 (6.5%)	19 (1.8%)	1 (14.3%)	866 (10.1%)	982 (8.8%)
	1278	1020		7320	
IIV4	(86.8%)	(95.8%)	5 (71.4%)	(85.1%)	9623 (86.3%)
LAIV3	99 (6.7%)	26 (2.4%)	1 (14.3%)	417 (4.8%)	543 (4.9%)

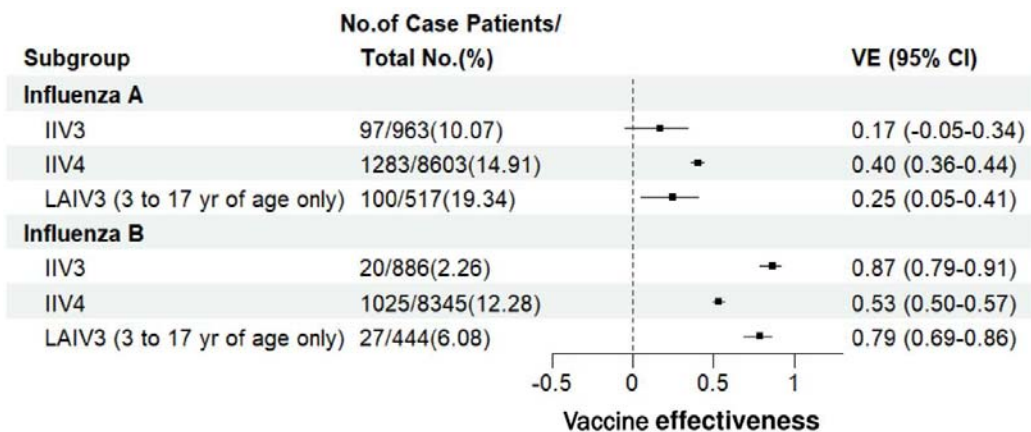


511

512 **Figure 2.** Adjusted estimates of influenza vaccine effectiveness (VE),

513 overall and stratified to age groups, virus subtypes and vaccine types.

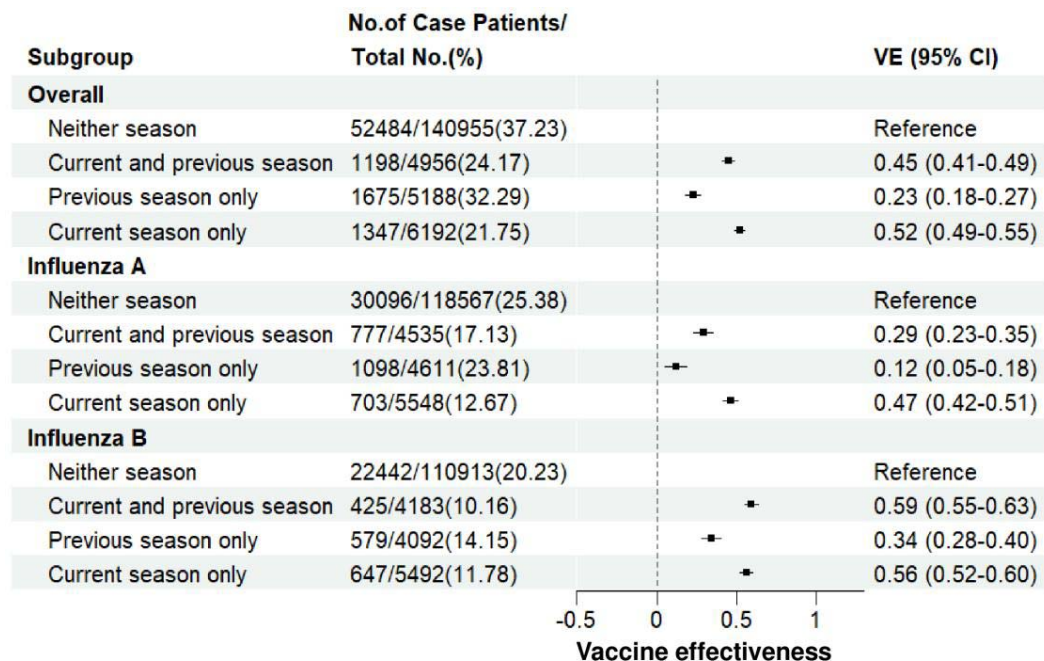
514 Horizontal bars indicated 95% confidence intervals (CI).



515

516 **Figure 3.** Adjusted VE against hospital-attended influenza A and B

517 infection, stratified to vaccine types.



518

519 **Figure 4.** Adjusted VE against hospital-attended influenza A and B
 520 infection, stratified according to receipt of vaccines for the current season
 521 (2023/24) and previous season (2022/23).

522

