

## Supplemental Materials

Erythropel HC, Jabba SV, Silinski P, Anastas PT, Krishnan-Sarin S, Zimmerman JB, Jordt SE. High Variability in Nicotine Analog Contents, Misleading Labeling, and Artificial Sweetener in New E-Cigarette Products Marketed as "FDA-Exempt".

**Table S1: Flavorant compounds detected in tested “SpreeBar” and “Nixotine” products.**

NA: nicotinamide

	Flavorant compounds identified by GC/MS (NIST database)
<b>‘SpreeBar’ products</b>	
Blood Orange Peach	$\gamma$ -Decalactone, ethyl butyrate, ethyl hexanoate, 3-hexenol, 3-hexenyl butyrate, hexyl acetate, isoamyl acetate, linalool, methyl octanoate, nerol, rheosmin, $\alpha$ -terpineol, WS-23 <sup>a</sup>
Blue Razz Ice	Methyl benzoate, 2-methylbutyl 2-methylbutanoate, raspberry ketone, rheosmin, WS-23
Creamy Melon	Ethyl butyrate, ethyl maltol, ethyl vanillin, ethylvanillin propylene glycol acetal, melonal, 6-nonenol, vanillin, vanillin propylene glycol acetal, WS-23
Pineapple Coconut	Allyl hexanoate, $\gamma$ -decalactone, ethyl butyrate, ethyl heptanoate, ethyl hexanoate, 3-hexenol, 3-hexen-1-ol acetate, maltol, WS-23
Rainbowfruit	Benzyl alcohol, $\alpha$ -cumyl alcohol, ethyl butyrate, methyl anthranilate, WS-23
Strawberry Apple Melon	Benzaldehyde propylene glycol acetal, $\gamma$ -decalactone, ethyl butyrate, ethyl hexanoate, 3-hexenol, hexyl acetate, isoamyl 2-methyl butyrate, linalool, methyl hexanoate, methyl cinnamate, WS-23
Strawberry Mango	Benzyl alcohol, $\gamma$ -decalactone, ethyl butyrate, 3-hexenol, WS-23
Sweet Spearmint	Carvone, eucalyptol, limonene, menthol, menthone, vanillin, WS-23
Watermelon Grape	Benzyl acetate, benzyl alcohol, $\gamma$ -decalactone, ethyl butyrate, 3-hexenol, menthyl acetate, methyl cinnamate, WS-23
<b>‘Nixotine’ products</b>	
Unflavored 0 mg/mL NA	none
Unflavored 12 mg/mL NA	
Unflavored 24 mg/mL NA	
Unflavored 36 mg/mL NA	
Cherry 0 mg/mL NA	Benzaldehyde, benzaldehyde propylene glycol acetal, benzaldehyde glycerol acetal
Cherry 12 mg/mL NA	
Cherry 24 mg/mL NA	
Cherry 36 mg/mL NA	

<sup>a</sup> IUPAC name of WS-23: 2-Isopropyl-N,2,3-trimethylbutanamide; CAS # 51115-67-4

## Supplemental Methods

**Chemicals & analytical standards:** Methanol, Water + 0.1% formic acid (FA), ACN + 0.1% FA, ammonium formate, propylene glycol, and glycerol were purchased >99% purity from Fisher Scientific (Waltham, MA). Nicotinamide and neotame at purities >99% and ammonium hydroxide as a 25% solution were purchased from Sigma-Aldrich, St. Louis, MO. Racemic (+/-) 6-methyl nicotine was purchased from Santa Cruz Biotechnology, Dallas, TX.

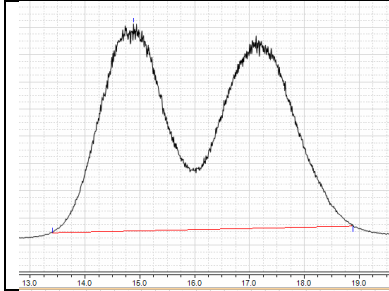
**GC/MS:** Gas chromatography (GC) coupled with mass spectrometry (MS) was carried out on a Clarus 580 GC coupled with SQ8S MS (PerkinElmer, Waltham, MA), fitted with a Elite-5MS column (length 60 m, id 0.25 mm, 0.25  $\mu$ m film; PerkinElmer). Injection volume: 1  $\mu$ L; split ratio: 10; program: 40  $^{\circ}$ C for 7 min; ramp 10  $^{\circ}$ C/min to 50  $^{\circ}$ C then hold for 20 min; ramp 10  $^{\circ}$ C/min to 310  $^{\circ}$ C then hold for 8 min; ramp 10  $^{\circ}$ C/min to 325  $^{\circ}$ C then hold for 11.5 min. Injector temperature: 300  $^{\circ}$ C; MS settings: ionization mode: electron impact ionization (EI+); m/z 30-620.

**GC/FID:** GC coupled with flame ionization detection (FID) was carried out on a GC-2010 (Shimadzu, Columbia, MD) fitted with a J&W DB-5 column (length 60 m, id 0.25 mm, 0.25  $\mu$ m film; Agilent, Santa Clara, CA). Injection volume: 1  $\mu$ L; split ratio: 300; program: 30  $^{\circ}$ C for 7 min; ramp 10  $^{\circ}$ C/min to 50  $^{\circ}$ C then hold for 20 min; ramp 10  $^{\circ}$ C/min to 310  $^{\circ}$ C then hold for 12 min. Injector temperature: 250  $^{\circ}$ C; detector temperature: 325  $^{\circ}$ C. Calibration curves for 6-methyl nicotine (6MN) and nicotinamide (NA) with  $\geq 4$  points were constructed and used to quantify 6MN in "SpreeBar" products and NA in "Nixotine" products. 6MN: Limit of quantification: 30  $\mu$ g/mL; limit of detection: 10  $\mu$ g/mL. NA: Limit of quantification: 35  $\mu$ g/mL, limit of detection: 10  $\mu$ g/mL.

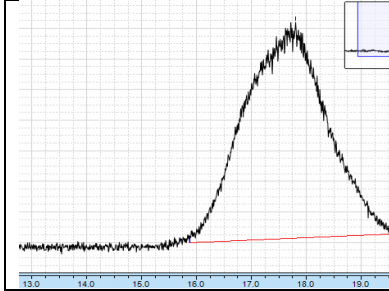
**Chiral LC/MS/MS for 6MN:** Liquid chromatography (LC) coupled with MS/MS was carried out on a Vanquish LC coupled to a Quantis MS (Thermo Fisher Scientific). Chiral separation was achieved using a ChiralPAK AGP column (150 mm x 4 mm id, 5  $\mu$ m particle size; Daicel Corporation, West Chester, PA) using an isocratic mobile phase program consisting of 90:10 (v/v) of 30 mM ammonium formate with 0.3%  $\text{NH}_4\text{OH}$  and methanol at 0.4 mL/min flow with a total runtime of 25 min at 25 $^{\circ}$ C and an injection volume of 10  $\mu$ L. MS/MS was carried out in heated electrospray ionization (H-ESI) mode at spray voltage: 3500 V (positive), 2500 V (negative); ion transfer tube temperature 300  $^{\circ}$ C; vaporizer temperature 350  $^{\circ}$ C; using selected reaction monitoring (SRM) mode for the following compounds:

Compound	Polarity	Precursor (m/z)	Product 1 (m/z) (Quantifying)	Product 2 (m/z) (Confirming)	Product 3 (m/z) (Confirming)
6-Methyl nicotine	Positive	177.1	146.0	144.0	130.9
Nicotine	Positive	163.1	117.0	130.0	132.0

Absent optically pure standards, (S)-6MN was tentatively identified based on the relative retention time of pure (S)-nicotine, which elutes after (R)-nicotine in the described conditions. For 'SpreeBar' samples, only the second of the two peaks detected in the racemic (+-) 6MN was detected for all samples:



SRM results for (+-) 6MN standard  
(X-axis: time, Y-axis: counts)



Example SRM result, here for SpreeBar Watermelon Grape  
(X-axis: time, Y-axis: counts)

**LC/MS/MS for artificial sweeteners:** Liquid chromatography (LC) coupled with MS/MS was carried out on a Vanquish LC coupled to a Quantis MS (Thermo Fisher Scientific). Compound separation was achieved via an established procedure using an Accucore RP-MS column (50 mm x 2.1 mm id, 2.6 µm particle size, Thermo Fisher Scientific) using a binary mobile phase program of (A) water + 0.1% formic acid and (B) acetonitrile + 0.1% formic acid at 0.4 mL/min flow with a total runtime of 8 min at 40 °C and an injection volume of 10 µL. The gradient was as follows:

Time (min)	A (%)	B (%)
0	95	5
0.5	95	5
2.5	5	95
4.5	5	95
4.6	95	5

MS/MS was carried out in heated electrospray ionization (H-ESI) mode at spray voltage: 3500 V (positive), 2500 V (negative); ion transfer tube temperature 300 °C; vaporizer temperature 350 °C; using selected reaction monitoring (SRM) mode for the following compounds:

Compound	Polarity	Precursor (m/z)	Product 1 (m/z) (Quantifying)	Product 2 (m/z) (Confirming)	Product 3 (m/z) (Confirming)
Acesulfame K	Negative	161.9	81.9	77.9	
Advantame	Negative	443.1	425.0	243.9	
Aspartame	Positive	295.1	120.0	180.0	235.0
Glucose	Negative	76.9	60.1		
Glycyrrhizin	Negative	821.4	351.0	113.0	
Neotame	Positive	380.2	172.0	320.0	
Saccharin	Negative	181.9	105.9	42.0	
Sodium cyclamate	Negative	177.9	79.9		
Sorbitol	Negative	181	88.9	71.0	100.9
Stevioside	Negative	803.3	641.2	479.2	
Sucralose	Negative	397	361.0	359.0	
Sucrose	Positive	365	202.9	184.9	

Only neotame was detected in 'SpreeBar' samples and calibration curves for neotame with ≥ 4 points were constructed and used to quantify neotame in 'SpreeBar' products. Neotame: Limit of quantification: 5 ng/mL, limit of detection: 1 ng/mL.