

1 Supplementary material

2 **Effect of parental autoimmune diseases on type 1 diabetes in offspring can be** 3 **partially explained by HLA and non-HLA polymorphisms: a nationwide** 4 **registry and biobank-based study in 7.2M Finns**

5 Feiyi Wang^{†1,2}, Aoxing Liu^{†1,3,4,5}, Zhiyu Yang¹, Pekka Vartiainen¹, Sakari Jukarainen¹, Satu Koskela⁶,
6 Richard A. Oram⁷, Lowri Allen⁸, Jarmo Ritari⁶, Jukka Partanen⁶, FinnGen, Markus Perola⁹, Tiinamaija
7 Tuomi^{*1,10,11,12}, Andrea Ganna^{*1,3,4,5}

- 8 1. Institute for Molecular Medicine Finland (FIMM), Helsinki Institute of Life Science (HiLIFE), University of
9 Helsinki, Helsinki, Finland
10 2. Centre for Population Health Sciences, Usher Institute of Population Health Sciences and Informatics,
11 University of Edinburgh, Edinburgh, Scotland, UK
12 3. Program in Medical and Population Genetics, Broad Institute of Harvard and MIT, Cambridge, MA, USA
13 4. Stanley Center for Psychiatric Research, Broad Institute of Harvard and MIT, Cambridge, MA, USA
14 5. Analytic and Translational Genetics Unit, ATGU, Massachusetts General Hospital, Boston, MA, USA
15 6. Finnish Red Cross Blood Service, Helsinki, Finland
16 7. University of Exeter, Exeter, UK
17 8. Cardiff University and University Hospital of Wales, Cardiff, UK
18 9. Finnish Institute for Health and Welfare (THL), Helsinki, Finland
19 10. Abdominal Center, Endocrinology, Helsinki University Hospital, Helsinki, Finland
20 11. Folkhälsan Research Center, Helsinki, Finland
21 12. Lund University Diabetes Center, Malmo, Sweden

22 † Joint first authorship

23 * Joint senior authorship

24 Corresponding author: Andrea Ganna (andrea.ganna@helsinki.fi) and Tiinamaija Tuomi (tiinamaija.tuomi@hus.fi)
25

26 **Table of Contents**

27

28 **1. Supplementary background**

29 **2. Supplementary methods**

30 2.1. Disease definition and source codes

31 2.2. Inclusion and exclusion criteria of the matched case-control study

32 2.3. Study design for HLA analysis

33 2.3.1. Design of the HLA haplotype analysis

34 2.3.2. Design of the HLA polygenic risk analysis

35 2.4. GWAS summary statistic for LDSC and PGS

36 **3. Supplementary results**

37 3.1. Basic statistics and demographic data

38 3.1.1. Basic estimates in FinRegistry and FinnGen

39 3.1.2. Socio-demographic characteristics in FinRegistry

40 3.2. Registry-based analyses

41 3.2.1. Matched case-control study

42 3.2.2. Association between parental AIDs and T1D in children by sex

43 3.3. Shared genetic background in population

44 3.3.1. Analyses in HLA regions – Haplotype analysis

45 3.3.2. Analyses in HLA regions – PGS Analysis

46 3.3.3. Analyses in non-HLA regions – LDSC

47 3.4. Inter-generation cross-trait transmission

48 3.4.1. Analyses in non-HLA regions – PGS analysis

49 3.4.2. Polygenic transmission disequilibrium tests

50 3.5. Contribution ratio between HLA PGS and non-HLA PGS

51 3.5.1. Associations between PGSs for AIDs and T1D in population

52 3.5.2. Contribution ratio between HLA PGS and non-HLA PGS

53 3.6. Construction of Full-PGS

54 3.6.1. Results for AID prediction using PGS for AID

55 3.6.2. Results for T1D prediction using PGS for AID

56 3.6.3. Results for T1D prediction in offspring using mid-parent PGS for AID

57 3.6.4. PTDT comparisons between Full-PGS and PRS-CS

58 **4. Supplementary discussion**

59 **5. Reference**

60

61

62 **1. Supplementary Background**63 **Table S1: Case reports, clinical studies and population-based studies reporting either co-**
64 **occurrence or familial aggregation of the listed autoimmune diseases among patients with**
65 **type 1 diabetes**
66

Disease	Co-occurrence	Familial aggregation	
		Clinical study	Genetic study
Type 1 diabetes	N/A	Sipetić et al. [8] Hanukoglu et al. [13] Anaya et al. [19] Hemminki et al. [24] ** Kishi et al. [26] Olamoyegun et al. [43] Yen et al. [46] ** Kang et al. [47]	Douek et al. [10] Lambert et al. [15] Erlich et al. [22] Bronson et al. [25] Parkkola et al. [34]
Adrenocortical insufficiency	Barker et al. [17] Van den Driessche et al. [27] Kota et al. [33] Conrad et al. [49] **	Hemminki et al. [24] **	Wägner et al. [30] Parkkola et al. [35]
Autoimmune hyperthyroidism	Gray et al. [5] De Block et al. [23] Van den Driessche et al. [27] Kota et al. [33] Kahaly et al. [41] Kang et al. [47] Conrad et al. [49] **	Anaya et al. [19] Hemminki et al. [24] ** Ganji et al. [42] Yen et al. [46] Kang et al. [47]	Wägner et al. [30] Parkkola et al. [35]
Autoimmune hypothyroidism	Samantaray et al. [3] Gray et al. [5] Kordonouri et al. [9] Hanukoglu et al. [13] De Block et al. [23] Van den Driessche et al. [27] Nagy et al. [28] Kota et al. [33] Karavanaki et al. [37] Kahaly et al. [41] Kang et al. [47] Conrad et al. [49] **	Bottazzo et al. [4] Hanukoglu et al. [13] Anaya et al. [19] Hemminki et al. [24] ** Karavanaki et al. [37] Yen et al. [46] ** Kang et al. [47]	Wägner et al. [30] Parkkola et al. [35]
Autoimmune hemolytic anemia	Masood et al. [36]	Hemminki et al. [24]	
Allergic purpura	D'Souza et al. [38]		
Vitamin B12 deficiency anaemia	Hanukoglu et al. [13] De Block et al. [23] Van den Driessche et al. [27]	Bottazzo et al. [4] Sipetić et al. [8] Anaya et al. [19] Hemminki et al. [24] **	Wägner et al. [30] Parkkola et al. [35]
Idiopathic thrombocytopenic purpura	De Block et al. [23]	Hanukoglu et al. [13] Hemminki et al. [24]	
Sarcoidosis	Benmelouka et al. [45]	Hemminki et al. [24] **	
Primary biliary cholangitis	Gazzaruso et al. [12] Johnson et al. [44]	Anaya et al. [19] Hemminki et al. [24] **	
Coeliac disease	Walker-Smith et al. [1] Thain et al. [2] Hanukoglu et al. [13] Sanchez-Albisua et al. [16] Goh et al. [20] Van den Driessche et al. [27] Zeglaoui et al. [29] Bhadada et al. [31]	Sipetić et al. [8] Hanukoglu et al. [13] Anaya et al. [19] Hemminki et al. [24] ** Ganji et al. [42] Kang et al. [47]	Wägner et al. [30] Parkkola et al. [35]

	Franzese et al. [32] Kota et al. [33] Kang et al. [47] Conrad et al. [49] **		
Inflammatory bowel disease	Kang et al. [47] Conrad et al. [49] *	Sipetić et al. [8] Hemminki et al. [24] ** Yen et al. [46] * Kang et al. [47]	Wägner et al. [30]
IgA nephropathy	Orfila et al. [7]		
Ankylosing spondylitis		Hemminki et al. [24] *	
Mixed connective tissue disease		Anaya et al. [19]	Parkkola et al. [35]
Rheumatoid arthritis	Hanukoglu et al. [13] Nagy et al. [28] Kang et al. [47] Conrad et al. [49] **	Hanukoglu et al. [13] Anaya et al. [19] Hemminki et al. [24] ** Kang et al. [47] Yen et al. [46]	Wägner et al. [30] Parkkola et al. [35]
Sjögren syndrome	Binder et al. [6] Shimomura et al. [14]	Anaya et al. [19] Hemminki et al. [24] Yen et al. [46] Kuo et al. [39] **	Parkkola et al. [35]
Systemic sclerosis	Zeglaoui et al. [29]	Hemminki et al. [24]	Parkkola et al. [35]
Wegener granulomatosis		Hemminki et al. [24] **	
Systemic lupus erythematosus	Zeglaoui et al. [29] Kota et al. [33] Masood et al. [36]	Anaya et al. [19] Hemminki et al. [24] ** Yen et al. [46]	Wägner et al. [30] Parkkola et al. [35]
Guillain-Barre syndrome	Hanukoglu et al. [13]	Hanukoglu et al. [13]	
Multiple Sclerosis	Marrosu et al. [48] **	Nielsen et al. [18] Anaya et al. [19] Hemminki et al. [24] Marrosu et al. [48] **	Wägner et al. [30] Parkkola et al. [35]
Myasthenia gravis	Wakata et al. [21] Kota et al. [33] Fang et al. [40] **	Hanukoglu et al. [13] Hemminki et al. [24]	Wägner et al. [30]
Alopecia areata		Sipetić et al. [8] Hanukoglu et al. [13]	
Psoriasis	Hanukoglu et al. [13] Masood et al. [26] Kang et al. [47]	Sipetić et al. [8] Hanukoglu et al. [13] Anaya et al. [19] Hemminki et al. [24] Yen et al. [46] Kang et al. [47]	Wägner et al. [30]
Vitiligo	Hanukoglu et al. [13] Van den Driessche et al. [27] Masood et al. [36] Conrad et al. [49] *	Alkhateeb et al. [11] Hanukoglu et al. [13] Anaya et al. [19]	Wägner et al. [30]

67
68 The listed studies indicate that at least one case of co-occurrence or familial aggregation was mentioned.
69 For those studies using nationwide population-based registry data, *: P-value<0.05, **: P-value<0.01
70

71 2. Supplementary methods

72 2.1 Disease definition and source codes

73 We used the disease endpoints as defined by clinical expert groups of the FinnGen study based on the Finnish version
74 International Classification of Diseases (ICD) codes of version 8 (1969-1986), 9 (1987-1995), and 10 (1996-2019).
75 More detailed disease definitions can be found from <https://risteys.finregistry.fi/> searching with the FinRegistry code
76 names. The numbers of parental autoimmune disease (AID) cases (N_p) were calculated from study population and
77 diseases were filtered according to these numbers ($N_p < 50$).

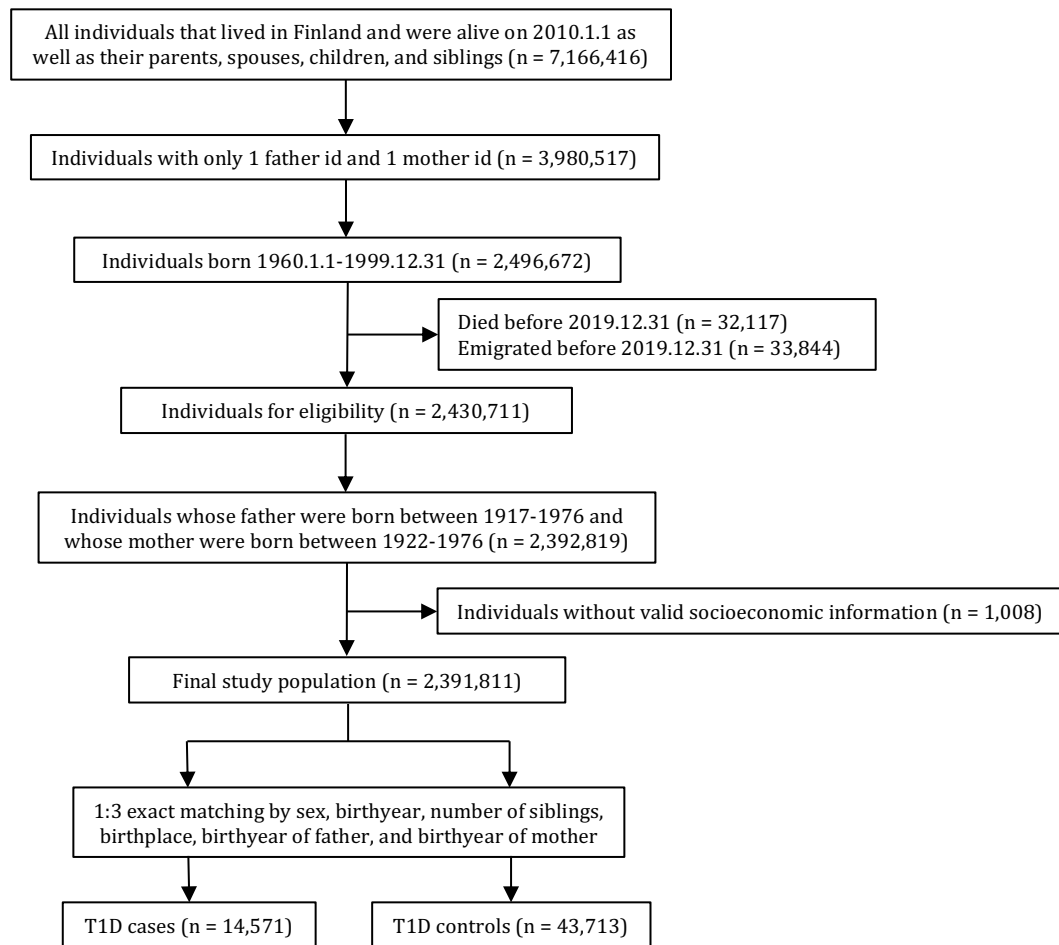
78 **Table S2.1: Definition of disease endpoints through ICD-8, ICD-9, and ICD-10**

79

Disease	Abbreviation	International Classification of Diseases			N _p	Delete reason
		ICD-10	ICD-9	ICD-8		
Type 1 diabetes	T1D	E10 (age < 40)	250 (age < 40)	250 (age < 40)	385	
Adrenocortical insufficiency	ADDISON	E27[1-4]	2554	2551	166	
Autoimmune hyperthyroidism	HYPER	E05[0]9]	2420	2420	635	
Autoimmune hypothyroidism	HYPO	E03[8-9]	244[8-9]	244	11485	
Autoimmune hemolytic anemia	AIHA	D591	2830	28390	55	
Allergic purpura		D690	2870	2870	154	
Vitamin B12 deficiency anaemia	B12A	D51	281[0-1]	281[0-1]	962	
Idiopathic thrombocytopenic purpura	ITP	D693	2873A	28710	186	
Sarcoidosis		D86	135	135	1104	
Primary biliary cholangitis	PBC	K743	N/A	N/A	157	
Coeliac disease	CD	K900	5790A	N/A	1129	
Inflammatory bowel disease	IBD	K50 K51	555 556	5630 5631 569	2221	
IgA nephropathy		N082&D8980	N/A	N/A	89	
Ankylosing spondylitis	AS	M45	7200	7124	680	
Mixed connective tissue disease	MCTD	M359	7109	73499	374	
Rheumatoid arthritis	RA	M0[5-6]	714[0-2]	712[1-3]	3224	
Sjögren syndrome	SjS	M350	7102	73490	585	
Systemic sclerosis	SS	M34	7101	7340	118	
Wegener granulomatosis	WG	M313	4464	4462	86	
Systemic lupus erythematosus	SLE	M32	7100	7431	210	
Guillain-Barre syndrome	GBS	G610	3570	35401	120	
Multiple Sclerosis	MS	G35	340	34099	461	
Myasthenia gravis	MG	G700	3580	7330	103	
Alopecia areata	AA	L63	7040B 7040C	70400	175	

Psoriasis	L40	6961, 6960A, 6968X	6869[3 6] 696[00 10 19]	2486	
Vitiligo	L80	7090F	70905	65	
Relapsing polychondritis	M94.1	N/A	N/A	14	N _p <50
Dermatopolymyositis	M33	N/A	N/A	91	Overlap with CD
Microscopic polyangiitis	M31.7	N/A	N/A	17	N _p <50
Churg-Strauss	M30.1	4460B	N/A	18	N _p <50
Behçet disease	M35.2	1361	N/A	15	N _p <50
Hypersensitivity angiitis	M31.0	4462A	4461	28	N _p <50
Rheumatic fever incl heart disease	I0[0-2 5-9]	39[0-8]	39[0-8]	262	Unclear definition
Acute disseminated encephalitis	G04.0#	3235A	32300	13	N _p <50
Other acute disseminated demyelination	G36	3410	34101	45	N _p <50
Narcolepsy and cataplexy	G47.4	347[0-1]	34700	30	N _p <50
Autoimmune polyglandular failure	E31.0[0-1 8]	2851	N/A	9	N _p <50
Graves ophthalmopathy	H06.2*E05.9	N/A	N/A	100	Subtype of HYPER
Autoimmune hepatitis	K75.4	N/A	N/A	0	N _p <50
Drug-induced autoimmune haemolytic anaemia	D59.0	2830B	28391	8	N _p <50
Disorders of myoneural junction and muscle in diseases classified elsewhere	G73*	N/A	N/A	28	N _p <50
Other demyelinating diseases of the central nervous system	G37	341[1-9]	3410[2-9]	197	Unclear definition
Anterior Iridocyclitis	H20.0, H20.1	3640, 3641	36400, 36402	1770	Unclear definition
Ulcerative colitis	K51	556	5631 569	1747	Subtype of IBD
Crohn disease	K50	555	5630	727	Subtype of IBD
Pemphigoid	L12	N/A	N/A	144	Unclear definition
Dermatitis herpetiformis	L13.0	6940A 6942	693	152	Overlap with CD
Henoch-Schönlein purpura nephritis	N08.2*D69.0	N/A	N/A	17	N _p <50
Autoimmune thyroiditis	E06.3	2452	N/A	136	Unclear definition
Linear scleroderma	L94.1	N/A	N/A	<5	N _p <50

81 **Figure S2.2: Inclusion and exclusion criteria of the matched case-control study**



82

83

84 **2.3 GWAS summary statistics for LDSC and PGS analyses**

85 For each autoimmune disease, we first searched recent summary statistics with the largest sample size from European
86 ancestry via <https://www.ebi.ac.uk/gwas/>. If nothing could be found there, we then tried to obtain the statistics from
87 meta-analysis on FinnGen R11, UK Biobank, and Estonia via <https://metaresults-est-ukbb.finnngen.fi>, or meta-analysis
88 on FinnGen R11 and UK Biobank via <https://metaresults-ukbb.finnngen.fi>, or analysis on FinnGen R11 via
89 <https://results.finnngen.fi>.

90

91 **Table S2.3.1: The sources of GWAS summary statistics regarding different autoimmune** 92 **diseases that were used to perform linkage disequilibrium score regression (LDSC) analysis**

93 To construct non-HLA PGS in genotyped trios or full PGS in imputed trios, for each AD, we extracted publicly
94 accessible GWAS summary statistics with the largest sample size from European ancestry. Cases/controls refer to the
95 number of individuals affected/not affected with the disease in question.

96

Disease	Source	Year	Cases	Controls
Type 1 diabetes	https://doi.org/10.1038/s41588-021-00880-5	2021	22153	37374
Adrenocortical insufficiency	FinnGen R11		1116	434894
Autoimmune hyperthyroidism	FinnGen R11 + UK Biobank + Estonia		4578	1019242
Autoimmune hypothyroidism	FinnGen R11 + UK Biobank + Estonia		87043	877215
Autoimmune hemolytic anemia	FinnGen R11		348	452718
Allergic purpura	FinnGen R11		1031	446531
Vitamin B12 deficiency anaemia	FinnGen R11 + UK Biobank + Estonia		9164	989292
Idiopathic thrombocytopenic purpura	FinnGen R11		968	446531
Sarcoidosis	FinnGen R11 + UK Biobank + Estonia		7031	1062340
Primary biliary cholangitis	FinnGen R11 + UK Biobank + Estonia		1253	836368
Celiac disease	https://doi.org/10.1038/ng.543	2010	4533	10750
Inflammatory bowel disease	https://doi.org/10.1038/ng.3760	2017	25042	34915
IgA nephropathy	FinnGen R11 + UK Biobank		944	873331
Ankylosing spondylitis	https://doi.org/10.1038/ng.2667	2013	9069	13578
Mixed connective tissue disease	FinnGen R11		2190	451543
Rheumatoid arthritis	http://dx.doi.org/10.1136/annrheumdis-2020-219065	2020	22628	288664
Sjögren syndrome	FinnGen R11 + UK Biobank + Estonia		4323	1047524
Systemic sclerosis	https://doi.org/10.1038/s41467-019-12760-y	2019	9095	17584
Wegener granulomatosis	FinnGen R11		486	439424
Systemic lupus erythematosus	https://doi.org/10.1038/ng.3434	2015	7219	15991
Guillain-Barre syndrome	FinnGen R11		489	445865
Multiple Sclerosis	https://doi.org/10.1038/nature10251	2011	9772	17376
Myasthenia gravis	https://doi.org/10.1073/pnas.2108672119	2022	1873	36370
Alopecia areata	FinnGen R11 + UK Biobank + Estonia		3384	973626
Psoriasis	FinnGen R11 + UK Biobank + Estonia		34530	1029934
Vitiligo	https://doi.org/10.1038/ng.3680	2016	4680	39586

97

98

99

100

Table S2.3.2: The sources of GWAS summary statistics regarding different autoimmune diseases that were used to construct non-HLA PGS and full PGS.

101

102

103

104

105

106

107

108

109

To construct non-HLA PGS in genotyped trios or full PGS in imputed trios, we used GWAS summary statistics excluding FinnGen. After removing seven AIDs using only statistics from FinnGen, we used the same source of GWAS summary statistics by removing that from FinnGen in **Table S2.3.1** for the rest 19 AIDs. Non-HLA PGSs were constructed using the GWAS summary statistics excluding HLA regions. For celiac disease, the variants in HLA regions were not available in the GWAS summary statistics (**Table S2.3.1**), we used meta-analysis of UK biobank and Estonia biobank instead for full PGS construction. In the last column of **Table S2.3.2**, each row specifies which analysis uses the corresponding data source. “Non-HLA” indicates non-HLA construction. “Full” is full PGS construction.

Disease	Source	Year	Cases	Controls	Analysis
Type 1 diabetes	https://doi.org/10.1038/s41588-021-00880-5	2021	22153	37374	non-HLA; full
Autoimmune hyperthyroidism	UK Biobank + Estonia		1141	568946	non-HLA; full
Autoimmune hypothyroidism	UK Biobank + Estonia		37988	547440	non-HLA; full

Vitamin B12 deficiency anaemia	UK Biobank + Estonia	5182	556285	non-HLA; full
Sarcoidosis	UK Biobank + Estonia	2177	615817	non-HLA; full
Primary biliary cholangitis	UK Biobank + Estonia	562	498082	non-HLA; full
Coeliac disease	https://doi.org/10.1038/ng.543	2010	4533	10750 non-HLA
Coeliac disease	UK Biobank + Estonia	4533	10750	full
Inflammatory bowel disease	https://doi.org/10.1038/ng.3760	2017	25042	34915 non-HLA; full
IgA nephropathy	UK Biobank	218	420324	non-HLA; full
Ankylosing spondylitis	https://doi.org/10.1038/ng.2667	2013	9069	13578 non-HLA; full
Rheumatoid arthritis	http://dx.doi.org/10.1136/annrheumdis-2020-219065	2020	22628	288664 non-HLA; full
Sjögren syndrome	UK Biobank + Estonia	1342	608100	non-HLA; full
Systemic sclerosis	https://doi.org/10.1038/s41467-019-12760-y	2019	9095	17584 non-HLA; full
Systemic lupus erythematosus	https://doi.org/10.1038/ng.3434	2015	7219	15991 non-HLA; full
Multiple Sclerosis	https://doi.org/10.1038/nature10251	2011	9772	17376 non-HLA; full
Myasthenia gravis	https://doi.org/10.1073/pnas.2108672119	2022	1873	36370 non-HLA; full
Alopecia areata	UK Biobank + Estonia	3384	973626	non-HLA; full
Psoriasis	UK Biobank + Estonia	34530	1029934	non-HLA; full
Vitiligo	https://doi.org/10.1038/ng.3680	2016	4680	39586 non-HLA; full

110

111

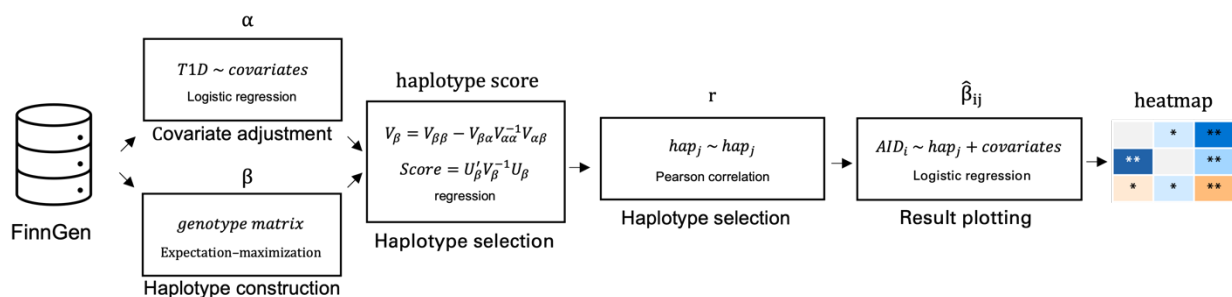
112 2.4 Study design for HLA analyses

113 There are two analyses in this section. We first conducted a haplotype based GWAS in HLA region to understand
 114 how T1D correlated with other AIDs via HLA haplotypes. Then we investigated whether HLA genetic liability to
 115 other ADs have a causal effect on T1D using our novel HLA PGS method.

116

117 Figure S2.4.1: Design of the HLA haplotype analysis

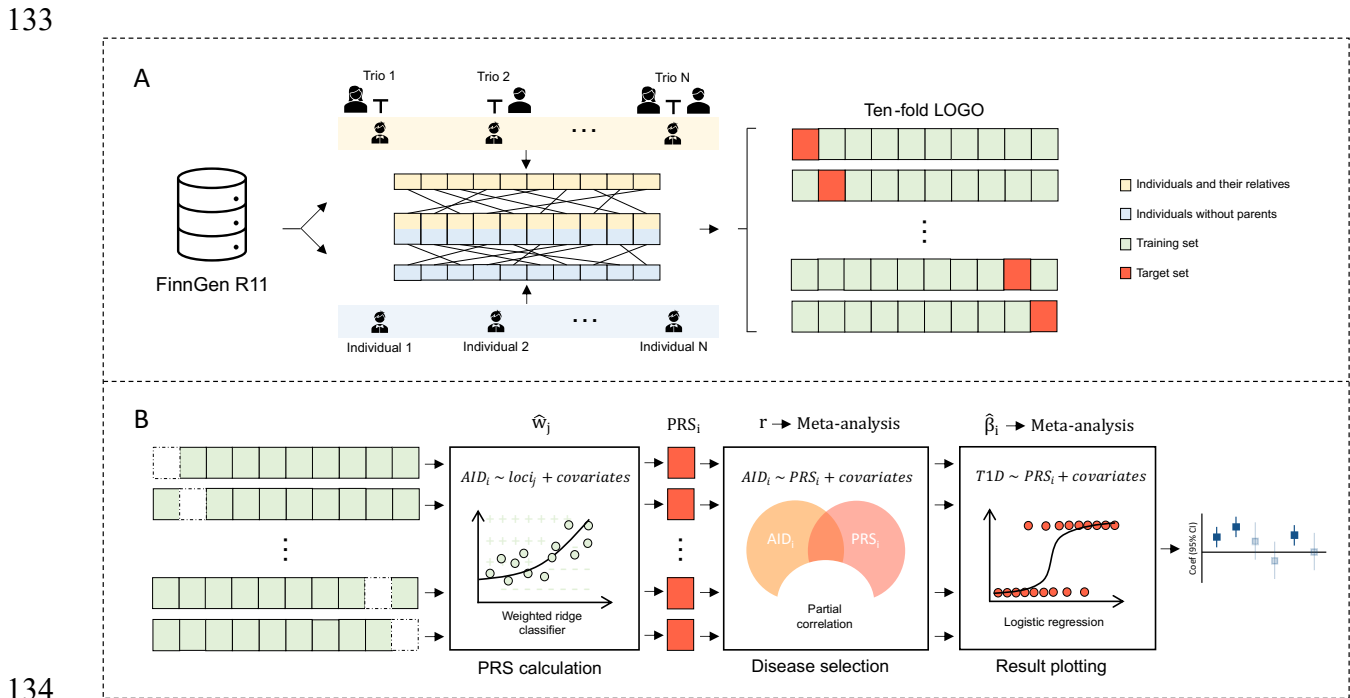
118 We applied expectation-maximization algorithm to construct possible haplotypes and a logistic regression used age,
 119 sex, and the first ten principal components (PCs) to predict T1D status for covariate adjustment. We then used what
 120 we obtained to calculate haplotype score and filter reliable haplotypes through multiple testing corrections. We next
 121 computed Pearson correlation for each pair of remaining haplotypes and removed one of them if the Pearson
 122 correlation² is greater than 0.7. Finally, we derived associations between the haplotypes remained and the AIDs and
 123 plotted the summary statistics of the associations via a heatmap.



124

125 **Figure S2.4.2: Design of the polygenic risk analysis of HLA-PGSs with 26 AIDs**

126 Panel A shows that we extracted data from FinnGen and *randomly* divided all individuals into ten groups. In a 10-
 127 iteration for loop, each group was used as target set (in orange) while the remaining nine groups (in light blue) were
 128 used for model training. Panel B depicts the design of the PGS analysis. In each iteration, a weighted ridge classifier
 129 was applied on training set to derive weights (\hat{w}_j) for PGSs for each AID. Then we calculated PGSs for each AID
 130 using the target set and calculated partial correlation (ρ) between the PGSs and the AID itself for disease selection.
 131 For the diseases remained, we associated the PGSs with T1D, meta-analyzed the association statistics from the ten
 132 subgroups and plotted the results.



134

135 We also proposed a novel PGS method to construct PGS for T1D and other AIDs specific for HLA regions using
 136 FinnGen R11.

137 We adopted a tenfold leave-one-group-out (LOGO) meta-analysis method (**Figure S2.4.2**) to avoid overfitting by
 138 making sure that the sample used for estimating the weights does not include individuals from the PGS prediction
 139 sample. We randomly divided the study population into groups.

140 For each AID, we used 9 groups (training set) to calculate the association between all HLA alleles and the AID with
 141 weighted ridge classifier, which can address high polymorphism and high LD in the HLA region by imposing a penalty
 142 on the size of the coefficients. The model also included age, sex, and the first ten PCs as covariates. The left-out group
 143 (validation set) was used to calculate the PGS, as a weighted sum of all imputed HLA alleles (allele dosage multiplied
 144 by its weight from the corresponding training set). After PGS normalization, we first measured partial correlation
 145 between each AID and its PGS, with the effect of the covariates removed. We dropped all the AIDs whose partial
 146 correlation with PGS for the AIDs themselves were lower than 2%. With this step, we filtered out diseases with low
 147 sample size or with weak HLA signal. Next, we conducted logistic linear regression, adjusting for age, sex, and the
 148 first ten PCs, to establish the association between PGS and T1D. The Bonferroni correction was applied to account
 149 for multiple comparisons.

150 We repeated this process 10 times by using each different group as the validation set. The association results obtained
 151 from each of the ten validation sets were meta-analyzed using the inverse variance method.

152 **3. Supplementary results**

153 **3.1 Basic statistics and demographic data**

154 **3.1.1 Basic estimates in FinRegistry and FinnGen**

155 Prevalence in Table S3.1.1 stands for unadjusted life-time prevalence. The estimates of FinRegistry were calculated based on index persons whereas those of
 156 FinnGen were from the whole population in FinnGen.

157

158 **Table S3.1.1: Basic estimates from FinRegistry and FinnGen**

Disease	FinRegistry		FinnGen		FinnGen genotyped trios	
	Prevalence	Parental cases	Prevalence	Cases	Prevalence	Parental cases
Type 1 diabetes	0.33 %	385	0.82 %	3668	0.41 %	104
Adrenocortical insufficiency	0.14 %	166	0.25 %	1100	0.26 %	65
Autoimmune hyperthyroidism	0.54 %	635	0.76 %	3404	0.64 %	160
Autoimmune hypothyroidism	9.85 %	11485	10.81 %	48113	13.13 %	3299
Autoimmune hemolytic anemia	0.05 %	55	0.08 %	341	0.09 %	23
Allergic purpura	0.13 %	154	0.23 %	1008	0.18 %	45
Vitamin B12 deficiency anaemia	0.83 %	962	0.85 %	3782	1.38 %	346
Idiopathic thrombocytopenic purpura	0.16 %	186	0.21 %	955	0.20 %	50
Sarcoidosis	0.95 %	1104	1.08 %	4800	1.27 %	319
Primary biliary cholangitis	0.13 %	157	0.15 %	688	0.21 %	52
Coeliac disease	0.97 %	1129	1.01 %	4497	1.31 %	330
Inflammatory bowel disease	1.91 %	2221	3.08 %	13709	2.75 %	690
IgA nephropathy	0.08 %	89	0.16 %	719	0.09 %	23
Ankylosing spondylitis	0.58 %	680	0.77 %	3431	0.74 %	187
Mixed connective tissue disease	0.32 %	374	0.48 %	2159	0.51 %	128
Rheumatoid arthritis	2.77 %	3224	3.24 %	14426	4.04 %	1014
Sjögren syndrome	0.50 %	585	0.66 %	2938	0.82 %	207
Systemic sclerosis	0.10 %	118	0.17 %	759	0.21 %	54

Wegener granulomatosis	0.07 %	86	0.11 %	475	0.07 %	18
Systemic lupus erythematosus	0.18 %	210	0.27 %	1184	0.20 %	51
Guillain-Barre syndrome	0.10 %	120	0.11 %	482	0.14 %	34
Multiple Sclerosis	0.40 %	461	0.59 %	2 606	0.48 %	120
Myasthenia gravis	0.09 %	103	0.11 %	489	0.10 %	25
Alopecia areata	0.15 %	175	0.19 %	856	0.10 %	25
Psoriasis	2.13 %	2486	2.54 %	11322	2.67 %	671
Vitiligo	0.06 %	65	0.08 %	337	0.06 %	16

160 **3.1.2 Socio-demographic characteristics in FinRegistry**

161 To ensure that cases and the controls were comparable, we analyzed the socio-demographic variables to determine
 162 differences between the two groups. We used Cohen’s D⁵⁰ for ordinal variables and Chi-squared test for categorical
 163 variables. Details for the definition of socio-demographic status can be found from <https://www.stat.fi/en/luokitukset/>.

164 **Table S3.1.2: Socio-demographic characteristics of cases and controls in the matched case-**
 165 **control study**

	Cases N = 14,915	Controls N = 44,745	Cohen’s D	χ^2 (P-value)
Year of birth (Child): mean	1983.08	1983.02	0.0056	
Year of birth (Father): mean	1952.29	1952.29	-0.0003	
Year of birth (Mother): mean	1954.56	1954.56	-0.0003	
Number of siblings: mean	1.68	1.69	-0.0062	
Socio-economic status: count (%)				
Self-employed, agriculture	142 (1.0)	478 (1.1)		
Self-employed, non-agriculture	647 (4.4)	2424 (5.5)		
Upper-level employees	2293 (15.7)	7206 (16.5)		0.4008
Lower-level employees	3865 (26.5)	11589 (26.5)		(0.9997)
Manual workers	3563 (24.5)	10905 (24.9)		
Students	1838 (12.6)	5388 (12.3)		
Pensioners	611 (4.2)	1303 (3)		
Unknown	1611 (11.1)	4416 (10.1)		
Marital status: count (%)				
Ever married	8835 (60.6)	25748 (58.9)		0.0102
Never married	5736 (39.4)	17965 (41.1)		(0.9196)
Number of children: mean	0.92	1.04	-0.0875	
Occupation: count (%)				
Armed forces	24 (0.2)	170 (0.4)		
Managers	300 (2.1)	1207 (2.8)		
Professionals	2256 (15.5)	6862 (15.7)		
Technicians and associate professionals	2169 (14.9)	6198 (14.2)		
Clerical and support workers	773 (5.3)	2223 (5.1)		0.3948
Service and sales workers	2776 (19.1)	8445 (19.3)		(1.0)
Skilled agricultural, forestry and fishery workers	249 (1.7)	803 (1.8)		
Craft and related trades workers	1758 (12.1)	4859 (11.1)		
Plant and machine operators, and assemblers	1050 (7.2)	3775 (8.6)		
Elementary occupations	1067 (7.3)	3179 (7.3)		
Unknown	2149 (14.7)	5991 (13.7)		
Education level: count (%)				
Education possibly ongoing	6251 (42.9)	18662 (42.7)		
Upper secondary education	3703 (25.4)	10962 (25.1)		
Specialist vocational education	133 (0.9)	448 (1)		0.1736
Short-cycle tertiary education	816 (5.6)	2005 (4.6)		(1.0)
First-cycle higher education	1557 (10.7)	4679 (10.7)		
Second-cycle higher education	1268 (8.7)	4200 (9.6)		
Third-cycle higher education	116 (0.8)	351 (0.8)		
Level of education unknown or missing	727 (5.0)	2405 (5.5)		
Mother tongue: count (%)				
Finnish	13,746 (94.3)	40,942 (93.7)		0.2934
Swedish	715 (4.9)	2,146 (4.9)		(0.9613)
Russian	36 (0.3)	159 (0.4)		
Others	74 (0.5)	466 (1.1)		

168 **3.2 Registry-based analyses**

169 **3.2.1: Matched case-control study**

170 One of our main analyses is matched case-control study using T1D before age of 40. We also conducted a
 171 sensitivity analysis using T1D before age of 20 as comparison. In the main analysis, we had 14,571 T1D
 172 cases in offspring and 43,713 controls. In the sensitivity analysis, we included 10,165 cases and 30,415
 173 controls. We reported number of cases, odds ratio (OR) with 95% confidence interval (CI) and P-values in the tables
 174 below as results.
 175

176 **Table S3.2.1.1: Finnish population-based case-control study using T1D before age of 40 as**
 177 **diagnosis code**
 178

Disease	N (%) in case group	N (%) in control group	OR (95% CI)	P-value
Type 1 diabetes	265 (0.91)	120 (0.14)	6.77 [5.44, 8.42]	3.75E-66
Autoimmune hypothyroidism	3675 (12.61)	7810 (8.93)	1.53 [1.46, 1.60]	4.75E-73
Coeliac disease	465 (1.6)	664 (0.76)	2.14 [1.90, 2.42]	2.54E-35
Rheumatoid arthritis	1043 (3.58)	2181 (2.49)	1.48 [1.37, 1.60]	1.84E-23
Vitamin B12 deficiency anaemia	350 (1.2)	612 (0.7)	1.76 [1.54, 2.02]	1.40E-16
Sarcoidosis	356 (1.22)	748 (0.86)	1.45 [1.28, 1.65]	1.13E-08
Autoimmune hyperthyroidism	204 (0.7)	431 (0.49)	1.42 [1.20, 1.68]	4.32E-05
Mixed connective tissue disease	126 (0.43)	248 (0.28)	1.54 [1.24, 1.91]	8.47E-05
Sjögren syndrome	179 (0.61)	406 (0.46)	1.33 [1.11, 1.59]	1.61E-03
Vitiligo	27 (0.09)	38 (0.04)	2.09 [1.20, 3.63]	1.94E-03
Primary biliary cholangitis	56 (0.19)	101 (0.12)	1.66 [1.20, 2.31]	2.42E-03
Autoimmune hemolytic anemia	23 (0.08)	32 (0.04)	2.20 [1.28, 3.78]	4.42E-03
Myasthenia gravis	36 (0.12)	67 (0.08)	1.65 [1.10, 2.48]	1.51E-02
Adrenocortical insufficiency	53 (0.18)	113 (0.13)	1.42 [1.02, 1.97]	3.51E-02
Psoriasis	665 (2.28)	1821 (2.08)	1.10 [1.01, 1.21]	3.53E-02
Systemic lupus erythematosus	63 (0.22)	147 (0.17)	1.29 [0.96, 1.73]	9.18E-02
IgA nephropathy	28 (0.1)	61 (0.07)	1.40 [0.89, 2.18]	1.43E-01
Systemic sclerosis	36 (0.12)	82 (0.09)	1.33 [0.90, 1.97]	1.55E-01
Alopecia areata	51 (0.18)	124 (0.14)	1.24 [0.89, 1.72]	1.99E-01
Guillain-Barre syndrome	35 (0.12)	85 (0.1)	1.25 [0.84, 1.86]	2.76E-01
Allergic purpura	44 (0.15)	110 (0.13)	1.20 [0.85, 1.71]	2.98E-01
Inflammatory bowel disease	573 (1.97)	1648 (1.89)	1.05 [0.95, 1.16]	3.19E-01
Wegener granulomatosis	25 (0.09)	61 (0.07)	1.24 [0.78, 1.98]	3.66E-01
Ankylosing spondylitis	161 (0.55)	519 (0.59)	0.93 [0.78, 1.11]	4.11E-01
Idiopathic thrombocytopenic purpura	50 (0.17)	136 (0.16)	1.10 [0.80, 1.53]	5.50E-01
Multiple Sclerosis	111 (0.38)	350 (0.4)	0.94 [0.76, 1.17]	5.91E-01

179

180

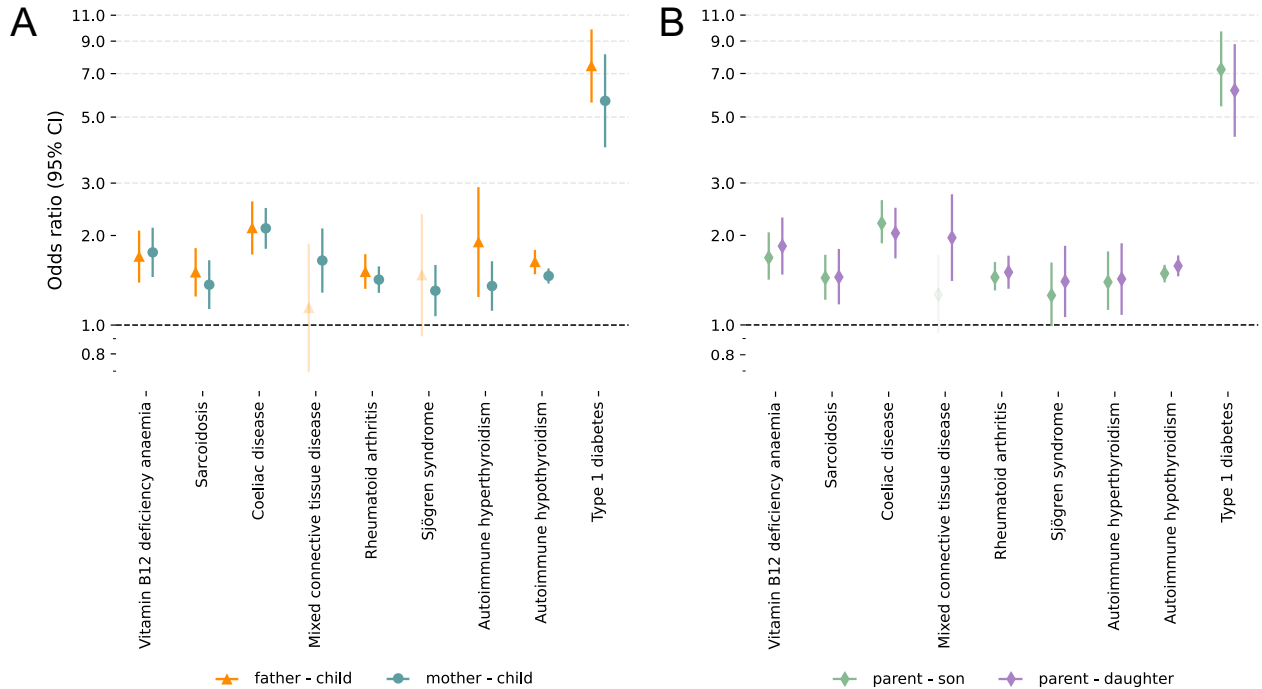
181 **Table S3.2.1.2: Finnish population-based case-control study using T1D before age of 20 as**
 182 **diagnosis code**
 183

Disease	N (%) in case group	N (%) in control group	OR (95% CI)	P-value
Type 1 diabetes	171 (0.84)	48 (0.08)	10.9 [7.90, 15.04]	6.81E-48
Autoimmune hypothyroidism	2396 (11.79)	5014 (8.24)	1.55 [1.46, 1.64]	2.31E-52
Coeliac disease	345 (1.7)	485 (0.8)	2.18 [1.90, 2.51]	1.39E-27
Rheumatoid arthritis	622 (3.06)	1276 (2.1)	1.50 [1.36, 1.66]	1.78E-15
Sarcoidosis	168 (0.83)	337 (0.55)	1.48 [1.27, 1.73]	7.65E-07
Vitamin B12 deficiency anaemia	244 (1.2)	500 (0.82)	1.50 [1.25, 1.81]	2.08E-05
Autoimmune hyperthyroidism	155 (0.76)	330 (0.54)	1.41 [1.16, 1.71]	4.57E-04
Mixed connective tissue disease	88 (0.43)	168 (0.28)	1.59 [1.22, 2.06]	4.98E-04
Systemic lupus erythematosus	101 (0.5)	281 (0.46)	1.77 [1.25, 2.51]	1.41E-03
Primary biliary cholangitis	23 (0.11)	39 (0.06)	1.79 [1.17, 2.73]	6.75E-03
Vitiligo	35 (0.17)	59 (0.1)	1.77 [1.05, 2.96]	3.06E-02
Alopecia areata	8 (0.04)	20 (0.03)	1.47 [1.00, 2.17]	4.94E-02
Psoriasis	21 (0.1)	52 (0.09)	1.09 [0.98, 1.22]	1.18E-01
Adrenocortical insufficiency	38 (0.19)	85 (0.14)	1.35 [0.92, 1.98]	1.25E-01
IgA nephropathy	448 (2.2)	1237 (2.03)	1.43 [0.85, 2.41]	1.74E-01
Idiopathic thrombocytopenic purpura	50 (0.25)	86 (0.14)	1.32 [0.88, 1.97]	1.82E-01
Ankylosing spondylitis	21 (0.1)	44 (0.07)	0.87 [0.70, 1.09]	2.21E-01
Systemic sclerosis	25 (0.12)	57 (0.09)	1.33 [0.83, 2.12]	2.37E-01
Inflammatory bowel disease	38 (0.19)	78 (0.13)	1.05 [0.94, 1.18]	3.57E-01
Wegener granulomatosis	25 (0.12)	65 (0.11)	1.33 [0.69, 2.57]	3.96E-01
Myasthenia gravis	31 (0.15)	80 (0.13)	1.21 [0.73, 2.02]	4.61E-01
Allergic purpura	432 (2.12)	1239 (2.04)	1.16 [0.77, 1.76]	4.71E-01
Sjögren syndrome	13 (0.06)	38 (0.06)	1.08 [0.86, 1.36]	5.10E-01
Guillain-Barre syndrome	104 (0.51)	361 (0.59)	1.16 [0.73, 1.84]	5.35E-01
Autoimmune hemolytic anemia	34 (0.17)	78 (0.13)	1.20 [0.53, 2.73]	6.58E-01
Multiple Sclerosis	89 (0.44)	275 (0.45)	0.98 [0.77, 1.25]	8.79E-01

184

185 **Figure S3.2.2: Association between parental AIDs and T1D in children by sex**

186 Panel A shows how T1D among children is associated with paternal AIDs and maternal AIDs. Panel B is the
 187 associations stratified by sex of children. Only parental AIDs significantly associated with T1D (**Fig.2**) are
 188 displayed.
 189



190
 191
 192

193 **3.2.3 Association between parental AIDs and age of T1D onset in children by sex**

194 We then assessed how parental AIDs affected age at onset of T1D in offspring. We excluded individuals without onset
 195 age. The median age at diagnosis (the first record of the ICD-code) of T1D was 12.7 years (IQR=[8.0,20.0]) with
 196 men (13.6 years, IQR=[8.6,21.1]) being older than women (11.6 years, IQR=[7.3,18.2]). In a multivariate regression
 197 analysis adjusted by all the matching factors, only parental T1D were significantly ($P < 0.05/9$) associated with the age
 198 of T1D onset in offspring (**Table S3.2.3.1**). The observed onset age among individuals with T1D was 1.57 [0.54-
 199 2.60] ($P = 0.0028$) years younger if at least one parent had T1D. We further observed that this association mainly came
 200 from the association between paternal T1D and T1D onset among sons while mothers with T1D had no impact on the
 201 T1D onset of their offspring (**Table S3.2.3.2**). To test if these associations could be biased by potential data structure
 202 due to e.g., average age of onset for different diseases, the change of ICD definitions and gradually improved
 203 healthcare policies over the years, we split the data by children's birthyear by median of their birthyear (1960-1979
 204 and 1980-1999). We conducted the same analysis and obtained consistent results (**Table S3.2.3.3**).
 205

206 **Table 3.2.3.1: Association between the age of T1D onset in offspring and parental AID**
 207 **status**

Parental AID	# AID cases	log(OR) [95% CI]	P
Type 1 diabetes	254	-1.57 [-2.6, -0.54]	0.0028
Autoimmune hypothyroidism	3469	-0.06 [-0.37, 0.26]	0.7264
Coeliac disease	458	-0.8 [-1.57, -0.04]	0.0399
Rheumatoid arthritis	1017	-0.55 [-1.08, -0.03]	0.0397
Sarcoidosis	333	-0.32 [-1.22, 0.57]	0.4803
Vitamin B12 deficiency anemia	357	0.88 [0, 1.76]	0.0502
Autoimmune hyperthyroidism	200	-1.15 [-2.31, 0]	0.0495
Mixed connective tissue disease	126	-1.02 [-2.46, 0.42]	0.1666
Sjögren syndrome	176	0.28 [-0.94, 1.51]	0.6483

208
 209
 210 **Table 3.2.3.2: Relationship between the age of T1D onset in offspring and parental T1D**
 211 **status stratified by sex of parents and offspring**

Relationship	# Parental T1D cases	log(OR) [95% CI]	P
father – daughter	60	-1.88 [-3.92, 0.16]	0.0704
mother – daughter	34	-0.4 [-3.1, 2.3]	0.7727
father – son	113	-1.85 [-3.41, -0.29]	0.0201
mother – son	49	-1.17 [-3.53, 1.18]	0.3277

212
 213 **Table 3.2.3.3: Relationship between the age of T1D onset in offspring and parental T1D**
 214 **status stratified by sex of parents and offspring with the offspring's birthyear within 1980-**
 215 **1999**

Relationship	# Parental T1D cases	log(OR) [95% CI]	P
parent – child	242	-1.45 [-2.35, -0.54]	0.0017
father – daughter	56	-1.59 [-3.41, 0.22]	0.0851
mother – daughter	33	-0.03 [-2.38, 2.32]	0.9832
father – son	109	-1.76 [-3.13, -0.39]	0.0118
mother – son	47	-1.42 [-3.49, 0.64]	0.1774

216

217 **3.3 Shared genetic background in population**
 218 **3.3.1 Analyses in HLA regions – Haplotype analysis**

219 **Table S3.3.1.1: Summary statistics of haplotype-specific score tests for T1D**

Haplotype	Frequency	Haplotype score	P-value _{score}
DQA1*01:02-DQB1*06:02-DRB1*15:01	0.14112373	-29.639428	1.00E-193
DQA1*01:03-DQB1*06:03-DRB1*13:01	0.08985561	-16.891367	1.00E-64
DQA1*01:01-DQB1*05:01-DRB1*01:01	0.18825249	-15.024028	1.00E-51
DQA1*05:05-DQB1*03:01-DRB1*11:01	0.0362712	-13.010508	1.00E-38
DQA1*02:01-DQB1*03:03-DRB1*07:01	0.01537059	-9.2391112	1.00E-20
DQA1*05:05-DQB1*03:01-DRB1*12:01	0.02637552	-7.8918718	3.00E-15
DQA1*02:01-DQB1*02:02-DRB1*07:01	0.04085991	-6.1855557	6.19E-10
DQA1*01:05-DQB1*05:01-DRB1*10:01	0.00854685	-5.8481741	4.97E-09
DQA1*01:04-DQB1*05:03-DRB1*14:54	0.00615272	-5.7002677	1.20E-08
DQA1*03:03-DQB1*03:01-DRB1*04:08	0.01166135	-5.2422534	1.59E-07
DQA1*03:02-DQB1*03:03-DRB1*13:01	0.00685471	-5.1770243	2.25E-07
DQA1*04:01-DQB1*04:02-DRB1*08:01	0.09734738	-3.0819368	2.05E-03
DQA1*01:02-DQB1*05:02-DRB1*16:01	0.00813475	-2.4329221	1.50E-02
DQA1*03:03-DQB1*03:01-DRB1*04:01	0.01094099	-2.3841454	1.71E-02
DQA1*03:02-DQB1*03:03-DRB1*09:01	0.03477909	-1.2612753	2.07E-01
DQA1*01:02-DQB1*06:04-DRB1*13:02	0.03329611	4.75611941	1.97E-06
DQA1*03:01-DQB1*03:02-DRB1*04:04	0.04202424	18.4916972	1.00E-76
DQA1*05:01-DQB1*02:01-DRB1*03:01	0.10353824	26.2203348	1.00E-151
DQA1*03:01-DQB1*03:02-DRB1*04:01	0.07418242	62.7742651	1.00E-858

220

221

222 **Table S3.3.1.2: Association between the six haplotypes and T1D**

223 The six haplotypes were selected from **S3.3.1.1** ($P > 1.00 \times 10^{-50}$). The first three haplotypes are positively associated
 224 with the risk of developing T1D while the last three ones are protective against T1D. Haplotype scores were calculated
 225 to present the association levels of the given haplotypes and T1D status.

Haplotype	OR _{T1D}	P-value _{T1D}
DRB1*04:01-DQA1*03:01-DQB1*03:02	7.54 [7.00, 8.13]	$< 1.0 \times 10^{-602}$
DRB1*03:01-DQA1*05:01-DQB1*02:01	2.48 [2.30, 2.68]	3.56×10^{-122}
DRB1*04:04-DQA1*03:01-DQB1*03:02	2.28 [2.07, 2.52]	5.13×10^{-62}
DRB1*01:01-DQA1*01:01-DQB1*05:01	0.52 [0.48, 0.57]	2.87×10^{-47}
DRB1*13:01-DQA1*01:03-DQB1*06:03	0.29 [0.25, 0.34]	8.71×10^{-52}
DRB1*15:01-DQA1*01:02-DQB1*06:02	0.06 [0.04, 0.07]	1.99×10^{-106}

226

227 **Table S3.3.1.3: Associations between HLA haplotypes and AIDs**

Haplotype	Disease	Odds ratio [95%CI]	P-value	N _{haplotype}	N _{case}	N _{case in haplotype}
DRB1*03:01-DQA1*05:01-DQB1*02:01	Coeliac disease	15.84 [14.57, 17.21]	1.0E-920	64362	3318	2595
DRB1*04:01-DQA1*03:01-DQB1*03:02	Type 1 diabetes	6.89 [6.38, 7.43]	1.0E-603	48292	3108	1818
DRB1*04:01-DQA1*03:01-DQB1*03:02	Rheumatoid arthritis	1.92 [1.84, 2.01]	3.06E-172	48292	11036	2571
DRB1*15:01-DQA1*01:02-DQB1*06:02	Multiple Sclerosis	2.83 [2.58, 3.1]	4.14E-110	87730	1873	946
DRB1*03:01-DQA1*05:01-DQB1*02:01	Type 1 diabetes	2.39 [2.22, 2.58]	4.23E-110	64362	3108	1190
DRB1*15:01-DQA1*01:02-DQB1*06:02	Type 1 diabetes	0.06 [0.05, 0.08]	1.19E-102	87730	3108	59
DRB1*03:01-DQA1*05:01-DQB1*02:01	Autoimmune hyperthyroidism	2.43 [2.24, 2.64]	6.66E-101	64362	2534	939
DRB1*01:01-DQA1*01:01-DQB1*05:01	Coeliac disease	0.42 [0.38, 0.46]	3.70E-82	114609	3318	602
DRB1*03:01-DQA1*05:01-DQB1*02:01	Sjögren syndrome	2.32 [2.13, 2.54]	8.16E-79	64362	2232	791
DRB1*13:01-DQA1*01:03-DQB1*06:03	Rheumatoid arthritis	0.58 [0.54, 0.61]	4.79E-68	55252	11036	1167
DRB1*04:04-DQA1*03:01-DQB1*03:02	Type 1 diabetes	2.2 [2, 2.43]	1.27E-55	27698	3108	550
DRB1*01:01-DQA1*01:01-DQB1*05:01	Sarcoidosis	0.53 [0.48, 0.57]	1.03E-54	114609	3506	759
DRB1*13:01-DQA1*01:03-DQB1*06:03	Type 1 diabetes	0.3 [0.26, 0.35]	2.90E-48	55252	3108	161
DRB1*03:01-DQA1*05:01-DQB1*02:01	Sarcoidosis	1.73 [1.61, 1.86]	3.61E-48	64362	3506	1030
DRB1*01:01-DQA1*01:01-DQB1*05:01	Type 1 diabetes	0.53 [0.49, 0.58]	2.18E-44	114609	3108	671
DRB1*04:04-DQA1*03:01-DQB1*03:02	Rheumatoid arthritis	1.53 [1.44, 1.62]	2.21E-44	27698	11036	1310
DRB1*03:01-DQA1*05:01-DQB1*02:01	Systemic lupus erythematosus	2.34 [2.04, 2.68]	3.99E-34	64362	907	327
DRB1*15:01-DQA1*01:02-DQB1*06:02	Rheumatoid arthritis	0.76 [0.72, 0.79]	3.72E-32	87730	11036	2387
DRB1*01:01-DQA1*01:01-DQB1*05:01	Rheumatoid arthritis	1.26 [1.21, 1.31]	3.62E-31	114609	11036	4439
DRB1*13:01-DQA1*01:03-DQB1*06:03	Coeliac disease	0.5 [0.44, 0.56]	1.61E-30	55252	3318	304
DRB1*15:01-DQA1*01:02-DQB1*06:02	Autoimmune hypothyroidism	0.87 [0.84, 0.89]	1.26E-26	87730	35504	8604
DRB1*03:01-DQA1*05:01-DQB1*02:01	Mixed connective tissue disease	1.77 [1.59, 1.97]	1.62E-25	64362	1620	481
DRB1*15:01-DQA1*01:02-DQB1*06:02	Ankylosing spondylitis	0.58 [0.53, 0.65]	6.90E-25	87730	2546	445
DRB1*04:04-DQA1*03:01-DQB1*03:02	Autoimmune hypothyroidism	1.21 [1.17, 1.26]	4.49E-23	27698	35504	3434
DRB1*03:01-DQA1*05:01-DQB1*02:01	Autoimmune hypothyroidism	1.13 [1.1, 1.17]	1.65E-18	64362	35504	7405
DRB1*15:01-DQA1*01:02-DQB1*06:02	Coeliac disease	0.68 [0.63, 0.74]	2.19E-18	87730	3318	657

DRB1*01:01-DQA1*01:01-DQB1*05:01	Sjögren syndrome	0.66 [0.6, 0.72]	7.46E-18	114609	2232	583
DRB1*15:01-DQA1*01:02-DQB1*06:02	Sarcoidosis	1.33 [1.24, 1.43]	2.38E-15	87730	3506	1155
DRB1*01:01-DQA1*01:01-DQB1*05:01	Vitamin B12 deficiency anaemia	0.73 [0.67, 0.79]	3.61E-14	114609	2968	828
DRB1*01:01-DQA1*01:01-DQB1*05:01	Multiple Sclerosis	0.67 [0.61, 0.75]	5.78E-14	114609	1873	488
DRB1*04:01-DQA1*03:01-DQB1*03:02	Autoimmune hypothyroidism	1.13 [1.09, 1.16]	6.92E-14	48292	35504	5497
DRB1*01:01-DQA1*01:01-DQB1*05:01	Autoimmune hypothyroidism	0.91 [0.89, 0.94]	2.55E-13	114609	35504	11784
DRB1*15:01-DQA1*01:02-DQB1*06:02	Vitamin B12 deficiency anaemia	1.33 [1.23, 1.44]	5.32E-13	87730	2968	971
DRB1*01:01-DQA1*01:01-DQB1*05:01	Psoriasis	0.84 [0.8, 0.88]	8.91E-13	114609	8061	2491
DRB1*03:01-DQA1*05:01-DQB1*02:01	Ankylosing spondylitis	0.69 [0.62, 0.77]	7.27E-11	64362	2546	365
DRB1*03:01-DQA1*05:01-DQB1*02:01	Adrenocortical insufficiency	1.61 [1.38, 1.88]	2.51E-09	64362	789	219
DRB1*13:01-DQA1*01:03-DQB1*06:03	Sjögren syndrome	0.68 [0.6, 0.78]	4.63E-09	55252	2232	272
DRB1*13:01-DQA1*01:03-DQB1*06:03	Ankylosing spondylitis	0.73 [0.65, 0.82]	7.91E-08	55252	2546	323
DRB1*15:01-DQA1*01:02-DQB1*06:02	Sjögren syndrome	1.26 [1.15, 1.38]	4.69E-07	87730	2232	698
DRB1*13:01-DQA1*01:03-DQB1*06:03	Inflammatory bowel disease	1.14 [1.08, 1.2]	4.85E-07	55252	10032	1853
DRB1*13:01-DQA1*01:03-DQB1*06:03	Vitamin B12 deficiency anaemia	0.76 [0.69, 0.85]	5.32E-07	55252	2968	404
DRB1*04:04-DQA1*03:01-DQB1*03:02	Ankylosing spondylitis	1.37 [1.21, 1.55]	7.50E-07	27698	2546	279
DRB1*01:01-DQA1*01:01-DQB1*05:01	Adrenocortical insufficiency	0.68 [0.58, 0.79]	1.34E-06	114609	789	208
DRB1*03:01-DQA1*05:01-DQB1*02:01	Rheumatoid arthritis	0.88 [0.84, 0.93]	1.87E-06	64362	11036	1914
DRB1*04:01-DQA1*03:01-DQB1*03:02	Inflammatory bowel disease	0.86 [0.81, 0.92]	1.91E-06	48292	10032	1277
DRB1*15:01-DQA1*01:02-DQB1*06:02	Psoriasis	0.88 [0.84, 0.93]	1.93E-06	87730	8061	1969
DRB1*04:01-DQA1*03:01-DQB1*03:02	Ankylosing spondylitis	0.74 [0.65, 0.84]	2.46E-06	48292	2546	281
DRB1*01:01-DQA1*01:01-DQB1*05:01	Autoimmune hyperthyroidism	0.82 [0.75, 0.89]	5.67E-06	114609	2534	764
DRB1*13:01-DQA1*01:03-DQB1*06:03	Systemic lupus erythematosus	0.62 [0.51, 0.77]	6.91E-06	55252	907	102
DRB1*13:01-DQA1*01:03-DQB1*06:03	Psoriasis	0.87 [0.82, 0.92]	7.45E-06	55252	8061	1200
DRB1*04:04-DQA1*03:01-DQB1*03:02	Adrenocortical insufficiency	1.6 [1.29, 1.97]	1.36E-05	27698	789	100
DRB1*13:01-DQA1*01:03-DQB1*06:03	Wegener granulomatosis	0.44 [0.3, 0.64]	1.81E-05	55252	364	30
DRB1*15:01-DQA1*01:02-DQB1*06:02	Primary biliary cholangitis	0.61 [0.49, 0.77]	2.59E-05	87730	497	91
DRB1*15:01-DQA1*01:02-DQB1*06:02	IgA nephropathy	0.62 [0.5, 0.78]	3.27E-05	87730	513	95
DRB1*13:01-DQA1*01:03-DQB1*06:03	Mixed connective tissue disease	0.74 [0.64, 0.86]	5.73E-05	55252	1620	210

DRB1*04:01-DQA1*03:01-DQB1*03:02	Alopecia areata	1.5 [1.22, 1.84]	1.03E-04	48292	584	116
DRB1*13:01-DQA1*01:03-DQB1*06:03	Autoimmune hypothyroidism	0.94 [0.91, 0.97]	1.39E-04	55252	35504	5674
DRB1*15:01-DQA1*01:02-DQB1*06:02	Systemic lupus erythematosus	1.3 [1.13, 1.5]	2.23E-04	87730	907	294
DRB1*13:01-DQA1*01:03-DQB1*06:03	Sarcoidosis	1.17 [1.07, 1.27]	3.53E-04	55252	3506	673
DRB1*03:01-DQA1*05:01-DQB1*02:01	Vitamin B12 deficiency anaemia	1.17 [1.07, 1.28]	4.23E-04	64362	2968	652
DRB1*13:01-DQA1*01:03-DQB1*06:03	Multiple Sclerosis	0.79 [0.69, 0.9]	4.72E-04	55252	1873	259
DRB1*04:04-DQA1*03:01-DQB1*03:02	Inflammatory bowel disease	0.87 [0.81, 0.94]	4.78E-04	27698	10032	746
DRB1*13:01-DQA1*01:03-DQB1*06:03	Systemic sclerosis	0.63 [0.48, 0.82]	5.75E-04	55252	552	62
DRB1*03:01-DQA1*05:01-DQB1*02:01	Allergic purpura	0.71 [0.58, 0.87]	9.56E-04	64362	747	110
DRB1*01:01-DQA1*01:01-DQB1*05:01	Mixed connective tissue disease	0.84 [0.75, 0.93]	9.97E-04	114609	1620	500
DRB1*01:01-DQA1*01:01-DQB1*05:01	Ankylosing spondylitis	1.14 [1.05, 1.24]	1.43E-03	114609	2546	959
DRB1*04:04-DQA1*03:01-DQB1*03:02	Autoimmune hyperthyroidism	0.78 [0.66, 0.91]	1.78E-03	27698	2534	165
DRB1*03:01-DQA1*05:01-DQB1*02:01	IgA nephropathy	0.67 [0.53, 0.87]	2.04E-03	64362	513	72
DRB1*04:04-DQA1*03:01-DQB1*03:02	Vitamin B12 deficiency anaemia	1.21 [1.07, 1.37]	2.18E-03	27698	2968	289
DRB1*04:01-DQA1*03:01-DQB1*03:02	Sjögren syndrome	0.82 [0.72, 0.93]	2.41E-03	48292	2232	263
DRB1*03:01-DQA1*05:01-DQB1*02:01	Wegener granulomatosis	0.63 [0.46, 0.85]	2.80E-03	64362	364	48
DRB1*01:01-DQA1*01:01-DQB1*05:01	Allergic purpura	1.25 [1.08, 1.45]	2.81E-03	114609	747	297
DRB1*04:04-DQA1*03:01-DQB1*03:02	Sarcoidosis	0.82 [0.72, 0.93]	2.87E-03	27698	3506	240
DRB1*03:01-DQA1*05:01-DQB1*02:01	Psoriasis	0.92 [0.86, 0.97]	2.89E-03	64362	8061	1450
DRB1*15:01-DQA1*01:02-DQB1*06:02	Wegener granulomatosis	1.38 [1.11, 1.71]	4.26E-03	87730	364	122
DRB1*01:01-DQA1*01:01-DQB1*05:01	Systemic lupus erythematosus	0.81 [0.7, 0.94]	4.49E-03	114609	907	271
DRB1*01:01-DQA1*01:01-DQB1*05:01	Systemic sclerosis	1.28 [1.08, 1.52]	4.56E-03	114609	552	227
DRB1*01:01-DQA1*01:01-DQB1*05:01	Wegener granulomatosis	0.72 [0.57, 0.9]	4.60E-03	114609	364	100
DRB1*04:01-DQA1*03:01-DQB1*03:02	Multiple Sclerosis	0.82 [0.71, 0.94]	4.80E-03	48292	1873	225
DRB1*04:01-DQA1*03:01-DQB1*03:02	Wegener granulomatosis	1.45 [1.12, 1.89]	5.02E-03	48292	364	70
DRB1*03:01-DQA1*05:01-DQB1*02:01	Myasthenia gravis	1.38 [1.09, 1.75]	7.04E-03	64362	372	93
DRB1*04:01-DQA1*03:01-DQB1*03:02	Vitiligo	1.54 [1.12, 2.11]	8.25E-03	48292	236	48
DRB1*15:01-DQA1*01:02-DQB1*06:02	Systemic sclerosis	0.77 [0.62, 0.94]	1.02E-02	87730	552	119
DRB1*13:01-DQA1*01:03-DQB1*06:03	Vitiligo	1.49 [1.1, 2.02]	1.06E-02	55252	236	54

DRB1*01:01-DQA1*01:01-DQB1*05:01	IgA nephropathy	1.25 [1.05, 1.49]	1.37E-02	114609	513	205
DRB1*13:01-DQA1*01:03-DQB1*06:03	Autoimmune hyperthyroidism	0.87 [0.78, 0.97]	1.39E-02	55252	2534	378
DRB1*13:01-DQA1*01:03-DQB1*06:03	Primary biliary cholangitis	0.72 [0.55, 0.94]	1.51E-02	55252	497	64
DRB1*01:01-DQA1*01:01-DQB1*05:01	Guillain-Barre syndrome	1.3 [1.05, 1.61]	1.61E-02	114609	356	145
DRB1*04:01-DQA1*03:01-DQB1*03:02	Vitamin B12 deficiency anaemia	1.13 [1.02, 1.25]	1.71E-02	48292	2968	467
DRB1*04:04-DQA1*03:01-DQB1*03:02	Multiple Sclerosis	1.2 [1.03, 1.4]	1.83E-02	27698	1873	181
DRB1*13:01-DQA1*01:03-DQB1*06:03	Alopecia areata	0.75 [0.59, 0.95]	1.90E-02	55252	584	76
DRB1*04:04-DQA1*03:01-DQB1*03:02	Wegener granulomatosis	1.42 [1.03, 1.97]	3.44E-02	27698	364	41
DRB1*13:01-DQA1*01:03-DQB1*06:03	Myasthenia gravis	0.73 [0.54, 0.99]	4.47E-02	55252	372	48
DRB1*03:01-DQA1*05:01-DQB1*02:01	Vitiligo	0.69 [0.48, 0.99]	4.50E-02	64362	236	34
DRB1*03:01-DQA1*05:01-DQB1*02:01	Multiple Sclerosis	0.89 [0.79, 1]	4.72E-02	64362	1873	339
DRB1*04:01-DQA1*03:01-DQB1*03:02	Autoimmune hyperthyroidism	0.89 [0.79, 1]	4.85E-02	48292	2534	327
DRB1*13:01-DQA1*01:03-DQB1*06:03	IgA nephropathy	0.78 [0.6, 1]	5.02E-02	55252	513	69
DRB1*04:01-DQA1*03:01-DQB1*03:02	Systemic lupus erythematosus	0.82 [0.67, 1.01]	5.89E-02	48292	907	109
DRB1*04:01-DQA1*03:01-DQB1*03:02	Sarcoidosis	0.91 [0.83, 1.01]	6.82E-02	48292	3506	459
DRB1*15:01-DQA1*01:02-DQB1*06:02	Autoimmune hyperthyroidism	0.92 [0.84, 1.01]	7.33E-02	87730	2534	637
DRB1*15:01-DQA1*01:02-DQB1*06:02	Autoimmune hemolytic anemia	1.28 [0.98, 1.67]	7.55E-02	87730	245	78
DRB1*01:01-DQA1*01:01-DQB1*05:01	Vitiligo	0.78 [0.59, 1.03]	8.53E-02	114609	236	69
DRB1*01:01-DQA1*01:01-DQB1*05:01	Primary biliary cholangitis	1.17 [0.97, 1.4]	9.80E-02	114609	497	190
DRB1*04:01-DQA1*03:01-DQB1*03:02	IgA nephropathy	1.21 [0.96, 1.53]	1.11E-01	48292	513	85
DRB1*03:01-DQA1*05:01-DQB1*02:01	Autoimmune hemolytic anemia	1.27 [0.94, 1.7]	1.16E-01	64362	245	58
DRB1*04:04-DQA1*03:01-DQB1*03:02	Primary biliary cholangitis	1.26 [0.94, 1.69]	1.23E-01	27698	497	50
DRB1*15:01-DQA1*01:02-DQB1*06:02	Inflammatory bowel disease	1.04 [0.99, 1.08]	1.31E-01	87730	10032	2717
DRB1*04:04-DQA1*03:01-DQB1*03:02	Vitiligo	1.36 [0.91, 2.05]	1.36E-01	27698	236	26
DRB1*04:01-DQA1*03:01-DQB1*03:02	Systemic sclerosis	1.19 [0.95, 1.49]	1.38E-01	48292	552	88
DRB1*01:01-DQA1*01:01-DQB1*05:01	Alopecia areata	0.88 [0.74, 1.05]	1.47E-01	114609	584	186
DRB1*15:01-DQA1*01:02-DQB1*06:02	Vitiligo	0.8 [0.59, 1.09]	1.65E-01	87730	236	53
DRB1*03:01-DQA1*05:01-DQB1*02:01	Idiopathic thrombocytopenic purpura	1.13 [0.95, 1.35]	1.74E-01	64362	712	154
DRB1*04:04-DQA1*03:01-DQB1*03:02	Sjögren syndrome	0.9 [0.76, 1.05]	1.76E-01	27698	2232	167

DRB1*15:01-DQA1*01:02-DQB1*06:02	Adrenocortical insufficiency	0.9 [0.76, 1.05]	1.85E-01	87730	789	195
DRB1*04:04-DQA1*03:01-DQB1*03:02	Allergic purpura	1.18 [0.92, 1.5]	1.87E-01	27698	747	73
DRB1*13:01-DQA1*01:03-DQB1*06:03	Guillain-Barre syndrome	0.82 [0.61, 1.11]	1.99E-01	55252	356	51
DRB1*04:04-DQA1*03:01-DQB1*03:02	Mixed connective tissue disease	1.12 [0.94, 1.32]	2.03E-01	27698	1620	148
DRB1*04:04-DQA1*03:01-DQB1*03:02	Idiopathic thrombocytopenic purpura	0.83 [0.63, 1.11]	2.20E-01	27698	712	50
DRB1*13:01-DQA1*01:03-DQB1*06:03	Adrenocortical insufficiency	0.89 [0.73, 1.08]	2.29E-01	55252	789	120
DRB1*15:01-DQA1*01:02-DQB1*06:02	Alopecia areata	1.11 [0.93, 1.33]	2.55E-01	87730	584	168
DRB1*04:01-DQA1*03:01-DQB1*03:02	Mixed connective tissue disease	1.08 [0.94, 1.24]	2.56E-01	48292	1620	245
DRB1*04:04-DQA1*03:01-DQB1*03:02	Coeliac disease	0.93 [0.82, 1.06]	2.74E-01	27698	3318	264
DRB1*15:01-DQA1*01:02-DQB1*06:02	Myasthenia gravis	1.13 [0.9, 1.42]	2.87E-01	87730	372	107
DRB1*01:01-DQA1*01:01-DQB1*05:01	Inflammatory bowel disease	0.98 [0.94, 1.02]	3.22E-01	114609	10032	3434
DRB1*04:04-DQA1*03:01-DQB1*03:02	Psoriasis	1.04 [0.96, 1.12]	3.40E-01	27698	8061	690
DRB1*04:04-DQA1*03:01-DQB1*03:02	Alopecia areata	0.86 [0.63, 1.18]	3.45E-01	27698	584	42
DRB1*04:04-DQA1*03:01-DQB1*03:02	Systemic lupus erythematosus	0.89 [0.69, 1.14]	3.50E-01	27698	907	66
DRB1*04:01-DQA1*03:01-DQB1*03:02	Coeliac disease	0.96 [0.87, 1.06]	4.11E-01	48292	3318	469
DRB1*04:01-DQA1*03:01-DQB1*03:02	Primary biliary cholangitis	0.9 [0.69, 1.17]	4.15E-01	48292	497	63
DRB1*13:01-DQA1*01:03-DQB1*06:03	Autoimmune hemolytic anemia	0.87 [0.61, 1.23]	4.30E-01	55252	245	37
DRB1*03:01-DQA1*05:01-DQB1*02:01	Inflammatory bowel disease	0.98 [0.93, 1.03]	4.31E-01	64362	10032	1912
DRB1*04:04-DQA1*03:01-DQB1*03:02	Systemic sclerosis	1.12 [0.84, 1.49]	4.47E-01	27698	552	51
DRB1*13:01-DQA1*01:03-DQB1*06:03	Idiopathic thrombocytopenic purpura	0.93 [0.76, 1.13]	4.60E-01	55252	712	112
DRB1*04:01-DQA1*03:01-DQB1*03:02	Autoimmune hemolytic anemia	1.14 [0.81, 1.6]	4.63E-01	48292	245	39
DRB1*04:01-DQA1*03:01-DQB1*03:02	Idiopathic thrombocytopenic purpura	1.07 [0.87, 1.31]	5.07E-01	48292	712	110
DRB1*03:01-DQA1*05:01-DQB1*02:01	Alopecia areata	0.93 [0.75, 1.15]	5.11E-01	64362	584	107
DRB1*03:01-DQA1*05:01-DQB1*02:01	Systemic sclerosis	1.07 [0.87, 1.32]	5.22E-01	64362	552	110
DRB1*04:04-DQA1*03:01-DQB1*03:02	IgA nephropathy	1.09 [0.81, 1.48]	5.61E-01	27698	513	46
DRB1*03:01-DQA1*05:01-DQB1*02:01	Guillain-Barre syndrome	1.07 [0.83, 1.39]	5.83E-01	64362	356	74
DRB1*01:01-DQA1*01:01-DQB1*05:01	Idiopathic thrombocytopenic purpura	0.96 [0.82, 1.12]	5.88E-01	114609	712	237
DRB1*13:01-DQA1*01:03-DQB1*06:03	Allergic purpura	0.95 [0.78, 1.16]	6.00E-01	55252	747	118
DRB1*15:01-DQA1*01:02-DQB1*06:02	Idiopathic thrombocytopenic purpura	0.96 [0.81, 1.13]	6.16E-01	87730	712	185

DRB1*04:01-DQA1*03:01-DQB1*03:02	Psoriasis	0.99 [0.92, 1.05]	6.52E-01	48292	8061	1143
DRB1*15:01-DQA1*01:02-DQB1*06:02	Guillain-Barre syndrome	0.95 [0.75, 1.21]	6.72E-01	87730	356	91
DRB1*04:01-DQA1*03:01-DQB1*03:02	Myasthenia gravis	0.94 [0.7, 1.27]	6.86E-01	48292	372	49
DRB1*04:01-DQA1*03:01-DQB1*03:02	Guillain-Barre syndrome	1.06 [0.79, 1.42]	7.13E-01	48292	356	53
DRB1*15:01-DQA1*01:02-DQB1*06:02	Mixed connective tissue disease	0.98 [0.88, 1.09]	7.15E-01	87730	1620	424
DRB1*04:01-DQA1*03:01-DQB1*03:02	Adrenocortical insufficiency	1.03 [0.85, 1.26]	7.60E-01	48292	789	116
DRB1*04:04-DQA1*03:01-DQB1*03:02	Myasthenia gravis	0.95 [0.65, 1.4]	8.10E-01	27698	372	29
DRB1*01:01-DQA1*01:01-DQB1*05:01	Myasthenia gravis	1.02 [0.83, 1.27]	8.33E-01	114609	372	132
DRB1*04:04-DQA1*03:01-DQB1*03:02	Guillain-Barre syndrome	1.03 [0.71, 1.5]	8.59E-01	27698	356	30
DRB1*15:01-DQA1*01:02-DQB1*06:02	Allergic purpura	1.01 [0.86, 1.19]	9.34E-01	87730	747	197
DRB1*03:01-DQA1*05:01-DQB1*02:01	Primary biliary cholangitis	1.01 [0.8, 1.26]	9.64E-01	64362	497	97
DRB1*04:01-DQA1*03:01-DQB1*03:02	Allergic purpura	1 [0.82, 1.23]	9.70E-01	48292	747	110
DRB1*04:04-DQA1*03:01-DQB1*03:02	Autoimmune hemolytic anemia	1 [0.63, 1.58]	9.88E-01	27698	245	20
DRB1*01:01-DQA1*01:01-DQB1*05:01	Autoimmune hemolytic anemia	1 [0.77, 1.3]	9.92E-01	114609	245	84

228

229

230 3.3.2 Analyses in HLA regions – PGS analysis

231 Table S3.3.2.1: Associations between HLA PGS and AIDs

232 This table includes number of AID cases (N), number of co-occurrences of the given AID among the cases (N.co), odds ratio (OR) with 95% CI, and partial
 233 correlation (ρ) between AIDs and HLA-PGS for the AIDs. We computed ρ to filter the AIDs ($|\rho|>2\%$) that would be used for analysis of association between HLA
 234 PGS and T1D.
 235

Disease	Number of cases		HLA polygenic risk - <i>AID ~ PRSAID</i>			HLA polygenic risk - <i>T1D ~ PRSAID</i>		
	N	N.co	OR [95% CI]	P-value	ρ (%)	OR [95% CI]	P-value	ρ (%)
Type 1 diabetes	1,182	1 182	5.33 [4.79, 5.93]	3.74E-207	29.98	5.33 [4.79, 5.93]	3.74E-207	29.98
Autoimmune hypothyroidism	2,580	179	1.23 [1.18, 1.28]	1.90E-22	6.39	1.55 [1.44, 1.67]	6.43E-31	9.66
Coeliac disease	292	62	2.79 [2.55, 3.06]	1.28E-107	17.07	2.07 [1.94, 2.22]	2.39E-96	17.06
Rheumatoid arthritis	712	29	1.63 [1.52, 1.76]	7.14E-41	8.92	2.10 [1.95, 2.27]	1.79E-78	15.06
Vitamin B12 deficiency anaemia	195	5	1.18 [1.02, 1.36]	2.81E-02	1.49			

Sarcoidosis	273	8	1.47 [1.29, 1.66]	1.64E-09	3.97	1.15 [1.07, 1.24]	2.16E-04	2.39
Autoimmune hyperthyroidism	161	14	1.61 [1.41, 1.85]	1.99E-12	4.68	1.19 [1.11, 1.27]	7.18E-07	3.49
Mixed connective tissue disease	102	<5	1.17 [0.97, 1.41]	1.04E-01	1.05			
Sjögren syndrome	154	<5	1.39 [1.20, 1.60]	9.30E-06	2.93	1.29 [1.21, 1.39]	3.15E-13	5.21
Vitiligo	15	<5	2.21 [1.32, 3.68]	2.39E-03	2.04	1.83 [1.69, 1.97]	3.39E-53	17.43
Primary biliary cholangitis	38	<5	1.71 [1.29, 2.28]	2.11E-04	2.43	1.43 [1.33, 1.54]	4.39E-21	7.06
Autoimmune hemolytic anemia	17	0	0.97 [0.6, 1.55]	8.85E-01	-0.11			
Myasthenia gravis	19	0	1.06 [0.68, 1.66]	7.82E-01	0.17			
Adrenocortical insufficiency	67	6	1.59 [1.27, 1.99]	5.07E-05	2.67	2.30 [2.13, 2.49]	4.17E-100	17.43
Psoriasis	547	22	1.51 [1.40, 1.62]	6.93E-30	7.60	1.11 [1.04, 1.20]	3.57E-03	2.40
Systemic lupus erythematosus	53	<5	1.77 [1.39, 2.25]	4.40E-06	3.00	1.40 [1.31, 1.51]	6.24E-21	6.44
IgA nephropathy	24	0	1.06 [0.71, 1.57]	7.83E-01	0.17			
Systemic sclerosis	41	0	1.07 [0.79, 1.45]	6.44E-01	0.32			
Alopecia areata	47	6	1.33 [1.00, 1.77]	5.07E-02	1.29			
Guillain-Barre syndrome	33	<5	1.09 [0.78, 1.53]	6.02E-01	0.34			
Allergic purpura	53	6	1.20 [0.92, 1.56]	1.86E-01	0.87			
Inflammatory bowel disease	670	18	1.29 [1.19, 1.39]	2.04E-10	4.19	0.64 [0.60, 0.69]	1.15E-30	-9.10
Wegener granulomatosis	23	0	1.37 [0.90, 2.11]	1.45E-01	0.99			
Ankylosing spondylitis	187	<5	2.22 [2.03, 2.42]	5.92E-72	14.08	0.93 [0.86, 1.00]	6.13E-02	-1.79
Idiopathic thrombocytopenic purpura	46	<5	1.11 [0.84, 1.46]	4.77E-01	0.46			
Multiple Sclerosis	128	8	1.95 [1.67, 2.29]	1.11E-16	5.52	0.81 [0.75, 0.88]	2.40E-07	-4.16

236
237
238
239
240
241
242
243

Table S3.3.2.2: Associations between HLA PGS and AIDs using leave-one-group-out method

To fully utilize the data, we conducted a sensitivity analysis using LOGO method (Figure S2.4.2) to conduct HLA PGS analysis. The results (Table S3.3.2.2) are very similar to those from the core analysis (Table S3.3.2.1).

Disease	Number of cases		HLA polygenic risk - <i>AID</i> ~ <i>PRS_{AID}</i>			HLA polygenic risk - <i>T1D</i> ~ <i>PRS_{AID}</i>		
	N	N.co	OR (95% CI)	P-value	ρ (%)	OR (95% CI)	P-value	ρ (%)
Type 1 diabetes	3 307	3 307	3.99 [3.84, 4.16]	5.27E-94	13.61	3.99 [3.84, 4.16]	5.27E-94	13.61
Autoimmune hypothyroidism	41 367	553	1.25 [1.23, 1.27]	3.22E-26	6.74	1.63 [1.58, 1.69]	6.81E-16	4.95
Coeliac disease	3 792	159	2.72 [2.66, 2.79]	9.47E-127	15.78	1.81 [1.75, 1.87]	8.85E-22	7.89
Rheumatoid arthritis	12 230	82	1.64 [1.61, 1.67]	6.65E-58	9.17	1.91 [1.85, 1.98]	7.21E-28	6.92
Vitamin B12 deficiency anaemia	3132	30	1.31 [1.23, 1.39]	4.40E-03	2.28	1.57 [1.51, 1.63]	3.96E-10	3.84
Sarcoidosis	4117	34	1.55 [1.5, 1.6]	6.75E-14	4.33	1.11 [1.07, 1.16]	1.79E-01	0.95
Autoimmune hyperthyroidism	3 054	48	1.51 [1.46, 1.55]	1.30E-14	4.33	1.27 [1.22, 1.33]	8.27E-04	2.63
Mixed connective tissue disease	1898	13	1.31 [1.26, 1.37]	1.12E-03	2.09	1.65 [1.59, 1.72]	3.85E-20	5.73
Sjögren syndrome	2479	7	1.52 [1.47, 1.59]	6.16E-10	3.91	1.22 [1.16, 1.28]	4.79E-02	2.09
Vitiligo	305	6	1.54 [1.38, 1.72]	4.75E-02	1.28			
Primary biliary cholangitis	574	<5	1.62 [1.47, 1.78]	7.21E-03	2.00	1.38 [1.31, 1.44]	3.32E-06	3.18
Autoimmune hemolytic anemia	280	<5	1.23 [1.09, 1.39]	4.37E-01	0.53			
Myasthenia gravis	428	0	1.16 [1.06, 1.33]	4.25E-01	0.51			
Adrenocortical insufficiency	947	20	1.25 [1.15, 1.36]	1.50E-01	1.13			
Psoriasis	9 900	67	1.49 [1.46, 1.51]	7.30E-41	7.51	1.1 [1.06, 1.14]	1.47E-01	0.94
Systemic lupus erythematosus	1040	6	1.44 [1.35, 1.53]	3.80E-03	2.12	1.33 [1.27, 1.39]	7.14E-04	2.92
IgA nephropathy	647	<5	1.32 [1.21, 1.43]	1.23E-01	1.12			
Systemic sclerosis	641	<5	1.58 [1.45, 1.72]	1.90E-02	1.81			
Alopecia areata	755	15	1.33 [1.23, 1.45]	8.01E-02	1.26			
Guillain-Barre syndrome	418	<5	1.08 [0.98, 1.19]	5.15E-01	0.25			
Allergic purpura	893	10	1.24 [1.14, 1.36]	2.36E-01	1.05			
Inflammatory bowel disease	12210	69	1.18 [1.16, 1.2]	4.48E-06	2.90	0.66 [0.63, 0.68]	1.82E-11	-4.08
Wegener granulomatosis	418	0	1.93 [1.67, 2.24]	1.83E-02	1.86			
Ankylosing spondylitis	3062	18	2.34 [2.29, 2.39]	5.43E-117	15.22	0.98 [0.94, 1.01]	4.83E-01	-0.27
Idiopathic thrombocytopenic purpura	795	6	1.06 [0.97, 1.15]	4.06E-01	0.24			
Multiple Sclerosis	2396	18	1.81 [1.74, 1.88]	5.74E-21	5.16	0.78 [0.75, 0.82]	3.32E-03	-2.16

245 **3.3.3 Analyses in non-HLA regions – LDSC**

246 **Table S3.3.3.1: Genetic correlations between T1D and other 25 AIDs**

Disease	r_g (95% CI)	P-value
Autoimmune hypothyroidism	0.60 [0.49, 0.71]	5.95E-29
Coeliac disease	0.27 [0.13, 0.42]	2.00E-04
Rheumatoid arthritis	0.46 [0.19, 0.72]	6.58E-04
Vitamin B12 deficiency anaemia	0.64 [0.50, 0.79]	8.26E-19
Sarcoidosis	0.31 [0.16, 0.45]	3.61E-05
Autoimmune hyperthyroidism	0.48 [0.25, 0.70]	3.25E-05
Mixed connective tissue disease	0.38 [0.10, 0.65]	7.40E-03
Sjögren syndrome	0.39 [0.22, 0.55]	5.11E-06
Vitiligo	0.54 [0.05, 1.02]	2.92E-02
Primary biliary cholangitis	0.46 [0.31, 0.61]	1.15E-09
Autoimmune hemolytic anemia	0.53 [-0.80, 1.00]	4.33E-01
Myasthenia gravis	0.34 [0.10, 0.58]	5.54E-03
Adrenocortical insufficiency	0.31 [-0.01, 0.63]	5.50E-02
Psoriasis	0.10 [0.00, 0.20]	4.96E-02
Systemic lupus erythematosus	0.34 [0.16, 0.52]	2.63E-04
IgA nephropathy	0.12 [-0.1, 0.35]	2.86E-01
Systemic sclerosis	0.35 [-0.05, 0.75]	8.55E-02
Alopecia areata	0.53 [0.18, 0.88]	3.28E-03
Guillain-Barre syndrome	0.14 [-0.12, 0.40]	2.99E-01
Allergic purpura	0.23 [-0.17, 0.64]	2.54E-01
Inflammatory bowel disease	-0.01 [-0.04, 0.02]	4.28E-01
Wegener granulomatosis	0.49 [-0.26, 1.00]	2.03E-01
Ankylosing spondylitis	0.11 [-0.04, 0.25]	1.51E-01
Idiopathic thrombocytopenic purpura	0.17 [-0.18, 0.51]	3.37E-01
Multiple Sclerosis	0.17 [-0.12, 0.46]	2.57E-01

247

248

249 **Table S3.3.3.2: Sensitivity analysis of genetic correlations between T1D and other AIDs**
 250 **significantly correlated with T1D**

Trait 1	Trait 2	Include chromosome 6		Exclude chromosome 6	
		Rg	p	Rg	p
Type 1 diabetes	Rheumatoid arthritis	0.46	0.0010	0.47	0.0000
Type 1 diabetes	Autoimmune hyperthyroidism	0.48	0.0000	0.47	0.0000
Type 1 diabetes	Autoimmune hypothyroidism	0.60	0.0000	0.60	0.0000
Type 1 diabetes	Coeliac disease	0.27	0.0002	0.25	0.0005
Type 1 diabetes	Vitamin B12 deficiency anaemia	0.64	0.0000	0.62	0.0000
Type 1 diabetes	Sjögren's syndrome	0.39	0.0000	0.40	0.0000

251

252 **3.4 Inter-generation cross-trait transmission**

253 **Table S3.4.1: Associations between non-HLA PGS and AIDs at population level**

Disease	non-HLA polygenic risk - $AID \sim PRS_{AID}$		
	OR (95% CI)	P-value	ρ (%)
Type 1 diabetes	2.29 [2.22, 2.37]	1.00E-519	7.93
Autoimmune hypothyroidism	1.73 [1.71, 1.75]	1.00E-2397	16.00
Autoimmune hyperthyroidism	1.25 [1.21, 1.3]	7.89E-39	1.95
Vitamin B12 deficiency anaemia	1.24 [1.2, 1.29]	4.15E-40	1.97
Sarcoidosis	1.27 [1.23, 1.3]	4.59E-59	2.43
Primary biliary cholangitis	1.27 [1.18, 1.37]	5.15E-10	0.93
Coeliac disease	1.66 [1.61, 1.72]	9.73E-184	4.34
Inflammatory bowel disease	1.58 [1.55, 1.6]	1.00E-582	7.78
IgA nephropathy	1.07 [1, 1.15]	6.03E-02	0.28
Ankylosing spondylitis	1.58 [1.52, 1.64]	2.76E-120	3.48
Rheumatoid arthritis	1.46 [1.43, 1.48]	1.00E-426	6.64
Sjögren syndrome	1.18 [1.14, 1.23]	1.18E-19	1.36
Systemic sclerosis	1.17 [1.07, 1.28]	5.30E-06	0.70
Systemic lupus erythematosus	1.76 [1.66, 1.86]	1.42E-83	2.91
Multiple Sclerosis	1.79 [1.72, 1.86]	1.91E-190	4.42
Myasthenia gravis	1.23 [1.13, 1.35]	5.24E-06	0.68
Alopecia areata	1.05 [0.99, 1.13]	1.19E-01	0.23
Psoriasis	1.5 [1.48, 1.53]	1.00E-398	6.41
Vitiligo	1.54 [1.39, 1.72]	5.82E-15	1.17

254

255 **Table S3.4.2 Polygenic transmission disequilibrium tests by HLA and non-HLA in trios**

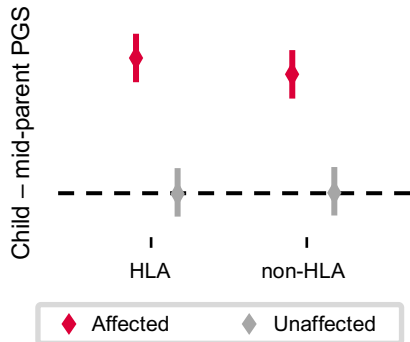
Disease	Region	Group status	Count	Mean (95% CI)	P-value
Type 1 diabetes	HLA	Affected	779	1.23 [1.16, 1.3]	2.61E-163
Type 1 diabetes	HLA	Unaffected	1321	-0.06 [-0.13, 0.01]	8.19E-02
Type 1 diabetes	non-HLA	Affected	779	0.69 [0.62, 0.75]	9.59E-74
Type 1 diabetes	non-HLA	Unaffected	1321	0 [-0.06, 0.05]	8.79E-01
Autoimmune hypothyroidism	HLA	Affected	565	0.4 [0.31, 0.49]	5.74E-18
Autoimmune hypothyroidism	HLA	Unaffected	935	0 [-0.07, 0.07]	9.62E-01
Autoimmune hypothyroidism	non-HLA	Affected	565	0.28 [0.2, 0.36]	8.02E-11
Autoimmune hypothyroidism	non-HLA	Unaffected	935	-0.04 [-0.11, 0.03]	2.26E-01
Coeliac disease	HLA	Affected	768	0.67 [0.59, 0.74]	1.74E-62
Coeliac disease	HLA	Unaffected	1269	-0.02 [-0.08, 0.05]	5.87E-01
Coeliac disease	non-HLA	Affected	768	0.04 [-0.02, 0.1]	2.23E-01
Coeliac disease	non-HLA	Unaffected	1269	0.01 [-0.04, 0.05]	4.42E-01

Rheumatoid arthritis	HLA	Affected	728	0.53 [0.46, 0.6]	7.35E-43
Rheumatoid arthritis	HLA	Unaffected	1234	-0.01 [-0.07, 0.06]	8.44E-01
Rheumatoid arthritis	non-HLA	Affected	728	0.21 [0.14, 0.28]	5.16E-09
Rheumatoid arthritis	non-HLA	Unaffected	1234	-0.08 [-0.14, -0.02]	6.00E-03
Systemic lupus erythematosus	HLA	Affected	797	0.27 [0.21, 0.34]	3.08E-15
Systemic lupus erythematosus	HLA	Unaffected	1347	0.01 [-0.04, 0.07]	6.54E-01
Systemic lupus erythematosus	non-HLA	Affected	797	0.13 [0.06, 0.19]	1.58E-04
Systemic lupus erythematosus	non-HLA	Unaffected	1347	-0.02 [-0.07, 0.02]	3.24E-01
Sarcoidosis	HLA	Affected	781	0.12 [0.06, 0.19]	3.23E-04
Sarcoidosis	HLA	Unaffected	1322	-0.01 [-0.06, 0.04]	7.12E-01
Sarcoidosis	non-HLA	Affected	781	0.11 [0.04, 0.18]	1.41E-03
Sarcoidosis	non-HLA	Unaffected	1322	0 [-0.05, 0.05]	9.59E-01
Psoriasis	HLA	Affected	751	0.13 [0.06, 0.2]	3.91E-04
Psoriasis	HLA	Unaffected	1256	-0.01 [-0.07, 0.04]	6.54E-01
Psoriasis	non-HLA	Affected	751	-0.01 [-0.07, 0.06]	7.96E-01
Psoriasis	non-HLA	Unaffected	1256	0.03 [-0.02, 0.08]	2.35E-01
Inflammatory bowel disease	HLA	Affected	756	-0.38 [-0.45, -0.31]	3.07E-22
Inflammatory bowel disease	HLA	Unaffected	1284	-0.04 [-0.1, 0.02]	1.74E-01
Inflammatory bowel disease	non-HLA	Affected	756	-0.01 [-0.08, 0.06]	8.05E-01
Inflammatory bowel disease	non-HLA	Unaffected	1284	-0.01 [-0.07, 0.04]	6.55E-01
Multiple Sclerosis	HLA	Affected	793	-0.15 [-0.23, -0.08]	3.45E-05
Multiple Sclerosis	HLA	Unaffected	1341	0.07 [0.02, 0.13]	1.10E-02
Multiple Sclerosis	non-HLA	Affected	793	0.05 [-0.02, 0.12]	1.99E-01
Multiple Sclerosis	non-HLA	Unaffected	1341	-0.02 [-0.07, 0.04]	5.97E-01
Ankylosing spondylitis	HLA	Affected	793	-0.11 [-0.18, -0.04]	1.27E-03
Ankylosing spondylitis	HLA	Unaffected	1337	-0.02 [-0.08, 0.03]	4.04E-01
Ankylosing spondylitis	non-HLA	Affected	793	-0.09 [-0.16, -0.02]	1.38E-02
Ankylosing spondylitis	non-HLA	Unaffected	1337	-0.01 [-0.07, 0.05]	7.23E-01
Vitamin B12 deficiency anaemia	HLA	Affected	778	0.39 [0.32, 0.45]	2.65E-27
Vitamin B12 deficiency anaemia	HLA	Unaffected	1320	0.02 [-0.04, 0.07]	5.42E-01
Autoimmune hyperthyroidism	HLA	Affected	783	0.14 [0.06, 0.21]	2.14E-04
Autoimmune hyperthyroidism	HLA	Unaffected	1327	0.01 [-0.05, 0.07]	6.97E-01
Primary biliary cholangitis	HLA	Affected	796	0.3 [0.23, 0.37]	1.87E-16
Primary biliary cholangitis	HLA	Unaffected	1346	0 [-0.05, 0.06]	9.18E-01
Mixed connective tissue disease	HLA	Affected	790	0.47 [0.41, 0.54]	1.39E-38
Mixed connective tissue disease	HLA	Unaffected	1331	0.01 [-0.05, 0.07]	8.05E-01
Sjögren syndrome	HLA	Affected	786	0.21 [0.14, 0.27]	1.46E-09
Sjögren syndrome	HLA	Unaffected	1322	0.03 [-0.02, 0.09]	2.72E-01
Adrenocortical insufficiency	HLA	Affected	795	0.62 [0.55, 0.68]	9.11E-61
Adrenocortical insufficiency	HLA	Unaffected	1345	-0.01 [-0.06, 0.04]	6.73E-01

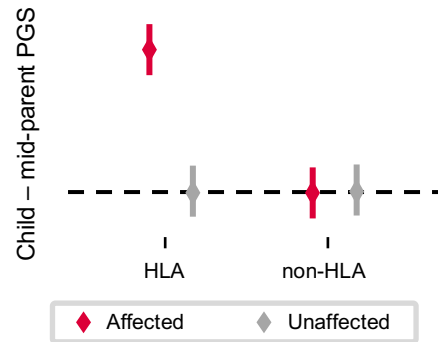
256
257
258

Patterns were observed from **Table S3.4.1** as below.

Pattern 1: HLA + non-HLA



Pattern 2: Only HLA



259
260
261
262
263

3.5 Distribution ratio between HLA PGS and non-HLA PGS

264 After observing these two different patterns from pTDT, we then wonder if we can quantify the contribution
265 ratio between HLA PGS and non-HLA PGS for cross-disease transmission by considering genetic
266 architecture of target disease. We took the ten AIDs with both HLA PGS and non-HLA PGS in pTDT into
267 account and removed psoriasis and sarcoidosis when we used the ten AID to predict T1D at individual level
268 and set $|\rho| > 1\%$ (**Table S3.5.1**). For the rest seven AIDs (T1D is not applicable), we found that we could use
269 our equation to quantify the contribution ratio between HLA PGS and non-HLA PGS using $\rho_{\text{HLA PGS}}$ and
270 $\rho_{\text{non-HLA PGS}}$ while considering the results from pTDT (**Table S3.5.2**). For instance, for RA from the first
271 group, the ratio trained from real data is 0.71:0.29 and that from our equation is 0.76:0.24. For IBD from
272 the group that non-HLA PGS is not transmitted, the ratios are 0.96:0.04 and 1.00:0.00. The results show
273 that the ratios from Ratio 3 calculated from our equation are very close to the observed ratios from Ratio 2
274 (Pearson correlation $r=0.977$). Our equation could provide a reliable ratio between HLA PGS and non-HLA
275 PGS in the setting of cross-disease transmission.

276

277 **Table S3.5.1 Associations between PGSs for AIDs and T1D in population**

Disease	HLA regions			non-HLA regions		
	OR (95% CI)	P-value	ρ (%)	OR (95% CI)	P-value	ρ (%)
Type 1 diabetes	3.68 [3.54, 3.83]	1.00E-959	12.54	1.84 [1.78, 1.91]	1.12E-257	6.30
Autoimmune hypothyroidism	1.55 [1.5, 1.6]	2.86E-153	4.22	1.45 [1.4, 1.49]	2.33E-104	3.40
Coeliac disease	1.8 [1.75, 1.85]	1.00E-421	7.61	1.1 [1.05, 1.14]	5.11E-06	0.83
Rheumatoid arthritis	1.89 [1.84, 1.95]	1.00E-346	6.54	1.33 [1.29, 1.38]	2.04E-63	2.66
Systemic lupus erythematosus	1.3 [1.26, 1.34]	1.02E-60	2.62	1.12 [1.08, 1.16]	5.02E-11	1.10
Sarcoidosis	1.12 [1.08, 1.16]	2.58E-11	0.97	1.09 [1.05, 1.13]	3.60E-07	0.83
Psoriasis	1.11 [1.08, 1.15]	8.15E-11	1.05	1.01 [0.97, 1.04]	7.05E-01	0.01
Inflammatory bowel disease	0.65 [0.63, 0.67]	4.53E-143	-4.07	1.02 [0.98, 1.05]	3.59E-01	-0.13
Multiple Sclerosis	0.82 [0.79, 0.84]	8.18E-30	-1.77	1.02 [0.99, 1.06]	2.33E-01	0.14
Ankylosing spondylitis	0.97 [0.93, 1]	6.00E-02	-0.31	0.94 [0.91, 0.97]	8.43E-05	-0.69

278
279
280

Table S3.5.2 Contribution ratio between HLA PGS and non-HLA PGS

281 We reported Pearson correlation (r) and three ratios between HLA PGS and non-HLA PGS. Ratio 1 is the ratio between
282 $\rho_{\text{HLA PGS}}$ and $\rho_{\text{non-HLA PGS}}$ when we predicted AID using PGSs for that AID. Ratio 2 is from T1D prediction using the
283 same PGSs. Ratio 3 is from our equation for T1D prediction (**Methods**).

	r	Ratio 1		Ratio 2		Ratio 3	
		HLA	non-HLA	HLA	non-HLA	HLA	non-HLA
Type 1 diabetes	0.128	0.67	0.33	N/A	N/A	N/A	N/A
Autoimmune hypothyroidism	0.017	0.31	0.69	0.55	0.45	0.48	0.52
Rheumatoid arthritis	0.079	0.61	0.39	0.71	0.29	0.76	0.24
Systemic lupus erythematosus	0.104	0.48	0.52	0.70	0.30	0.65	0.35
Coeliac disease	0.016	0.79	0.21	0.90	0.10	1.00	0.00
Psoriasis	0.038	0.55	0.45	0.99	0.01	1.00	0.00
Inflammatory bowel disease	0.005	0.29	0.71	0.96	0.04	1.00	0.00
Multiple Sclerosis	0.042	0.57	0.43	0.93	0.07	1.00	0.00

284
285

286 **3.6 Predicting risk of T1D in offspring using parental PGS**

287 We tried five different AID PGSs to predict T1D at an individual level. Using trio data, we compared these five PGSs
 288 to clinical diagnoses from parents for T1D prediction in offspring. For each analysis, we reported their AUC and the
 289 differences between PRS-CS and Full-PGS using P-value from t-test (P).

290 **Table S3.6.1 Comparisons among models using PRS-CS, Full-PGS using ratio 1, and HLA**
 291 **PGS along with non-HLA PGS at individual level for predicting the same AID**

AUC comparisons		PRS-CS	Full-PGS	P	HLA + non-HLA	HLA	non-HLA
Pattern 1	Type 1 diabetes	0.804	0.906	3.02E-07	0.905	0.882	0.754
	Autoimmune hypothyroidism	0.659	0.668	3.39E-01	0.668	0.568	0.655
	Rheumatoid arthritis	0.615	0.672	1.74E-02	0.672	0.654	0.605
	Systemic lupus erythematosus	0.627	0.657	5.50E-01	0.656	0.628	0.641
Pattern 2	Coeliac disease	0.579	0.837	4.40E-06	0.834	0.829	0.617
	Psoriasis	0.604	0.662	2.19E-01	0.659	0.628	0.607
	Inflammatory bowel disease	0.614	0.632	4.47E-01	0.646	0.605	0.599
	Multiple Sclerosis	0.597	0.722	1.11E-01	0.720	0.681	0.635

292
 293
 294 **Table S3.6.2 Comparisons among models using PRS-CS, Full-PGS using ratio 3, and HLA**
 295 **PGS along with non-HLA PGS at individual level for T1D prediction**
 296

AUC comparisons		PRS-CS	Full-PGS	P	HLA + non-HLA	HLA	non-HLA
Pattern 1	Type 1 diabetes	0.804	0.906	3.02E-07	0.905	0.882	0.754
	Autoimmune hypothyroidism	0.630	0.668	5.29E-06	0.671	0.637	0.605
	Rheumatoid arthritis	0.653	0.738	8.39E-04	0.738	0.730	0.592
	Systemic lupus erythematosus	0.592	0.595	6.17E-01	0.593	0.578	0.551
Pattern 2	Coeliac disease	0.535	0.745	5.38E-08	0.745	0.745	0.513
	Psoriasis	0.511	0.553	6.21E-03	0.553	0.553	0.503
	Inflammatory bowel disease	0.545	0.639	6.85E-05	0.639	0.639	0.505
	Multiple Sclerosis	0.529	0.554	1.01E-01	0.554	0.554	0.503

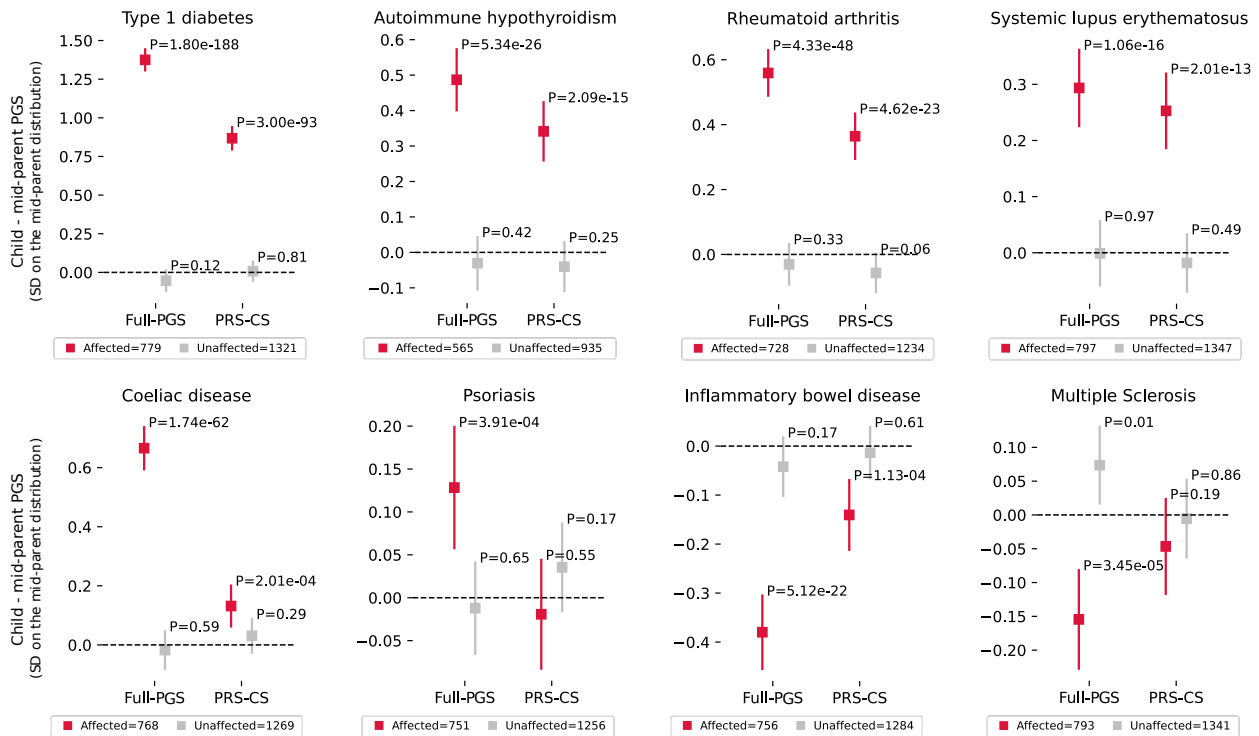
297
 298
 299

300 **Table S3.6.3 AUC comparisons among models using parental diagnosis, parental full PGS**
 301 **using PRS-CS, Full-PGS, and parental HLA PGS along with parental non-HLA PGS in**
 302 **12,563 genotyped trios for T1D prediction**
 303

AUC comparisons		Diagnosis	PRS-CS	Full-PGS	P	HLA + non-HLA	HLA	non-HLA
Pattern 1	Type 1 diabetes	0.509	0.733	0.817	5.63E-05	0.818	0.793	0.684
	Autoimmune hypothyroidism	0.522	0.590	0.613	6.31E-04	0.614	0.589	0.573
	Rheumatoid arthritis	0.509	0.615	0.682	6.51E-03	0.682	0.674	0.572
	Systemic lupus erythematosus	0.501	0.574	0.568	7.02E-01	0.573	0.546	0.548
Pattern 2	Coeliac disease	0.506	0.510	0.662	1.81E-06	0.662	0.662	0.505
	Psoriasis	0.507	0.509	0.530	5.07E-02	0.529	0.530	0.496
	Inflammatory bowel disease	0.502	0.522	0.592	2.91E-04	0.592	0.592	0.510
	Multiple Sclerosis	0.504	0.526	0.549	1.68E-01	0.55	0.549	0.509

304
 305 **Figure S3.6.4 Mean Full-PGSs among affected children also overall had a larger deviation**
 306 **compared to mean PGS using PRS-CS**
 307

308 For example, among T1D affected children, the mean full PGSs for CD using PRS-CS versus our approach deviated
 309 by 1.37 [1.31, 1.44] ($P=1.80 \times 10^{-188}$) and 0.87 [0.80, 0.94] ($P=3.00 \times 10^{-93}$).



310
 311

312 4. Supplementary discussion

313 **Table S4: Significant associations being reported from previous studies and in this study.**

314 we summarized our work and previous work reporting associations between familial aggregation of T1D and other
 315 AIDs using nationwide population-based studies with at least 2 000 AID cases (**Table S1**). Because of the different
 316 statistical methods and thresholds were applied in different studies, to ensure the statistics were in the same scaled
 317 framework, we defined a significant association according to P-value (positive association with P-value<0.05: *,
 318 positive association with P-value<0.01: **, negative association with P-value<0.01: --). From previous studies, an
 319 association can be either between parental AID and T1D in children or familial AID and T1D.

Disease names	Previous nationwide registry-based studies	Registry-based study		Genetic analyses	
		T1D age<40	T1D age<20	HLA PGS	non-HLA r _g
Type 1 diabetes	**	**	**	**	N/A
Autoimmune hypothyroidism	**	**	**	**	**
Coeliac disease	**	**	**	**	**
Rheumatoid arthritis	**	**	**	**	**
Vitamin B12 deficiency anaemia	**	**	**		**
Sarcoidosis	**	**	**	**	**
Autoimmune hyperthyroidism	**	**	**	**	**
Mixed connective tissue disease		**	**		*
Sjögren syndrome	**	**		**	**
Vitiligo		**	*		**
Primary biliary cholangitis	**	**	**	**	**
Autoimmune hemolytic anemia		**			
Myasthenia gravis		*			**
Adrenocortical insufficiency	**	*		**	
Psoriasis		*		**	*
Systemic lupus erythematosus	**		**	**	**
IgA nephropathy					
Systemic sclerosis					
Alopecia areata			*		**
Guillain-Barre syndrome					
Allergic purpura					
Inflammatory bowel disease	**			--	
Wegener granulomatosis	**				
Ankylosing spondylitis	*				
ITP					
Multiple Sclerosis	**			--	

320

5. References

- 1 Walker-Smith, J. A., R. Vines, and W. Grigor. "Coeliac disease and diabetes." *The Lancet* 294.7621 (1969): 650.
- 2 Thain, M. E., J. R. Hamilton, and R. M. Ehrlich. "Coexistence of diabetes mellitus and celiac disease." *The Journal of pediatrics* 85.4 (1974): 527-529.
- 3 Samantaray, S. K., B. M. Pulimood, and T. S. Koshy. "Coexistence of diabetes and hypothyroidism in South India." *Medical Journal of Australia* 1.3 (1977): 60-62.
- 4 Bottazzo, G. F., et al. "Autoimmunity in juvenile diabetics and their families." *Br Med J* 2.6131 (1978): 165-168.
- 5 Gray, R. S., R. Herd, and B. F. Clarke. "The clinical features of diabetes with coexisting autoimmune thyroid disease." *Diabetologia* 20.6 (1981): 602-606.
- 6 Binder, A., et al. "Sjögren's syndrome: association with type-1 diabetes mellitus." *Rheumatology* 28.6 (1989): 518-520.
- 7 Von Orfila, Claudine, et al. "IgA nephropathy complicating diabetic glomerulosclerosis." *Nephron* 79.3 (1998): 279-287.
- 8 Sipetić S, Vlajinac H, Kocev N, Marinković J, Radmanović S, Denić L. Family history and risk of type 1 diabetes mellitus. *Acta Diabetol.* 2002 Sep;39(3):111-5.
- 9 Kordonouri, Olga, et al. "Thyroid autoimmunity in children and adolescents with type 1 diabetes: a multicenter survey." *Diabetes care* 25.8 (2002): 1346-1350.
- 10 Douek, I. F., et al. "Three generations of autoimmune diabetes: an extended family study." *Diabetologia* 46 (2003): 1313-1318.
- 11 Alkhateeb, Asem, et al. "Epidemiology of vitiligo and associated autoimmune diseases in Caucasian probands and their families." *Pigment Cell Research* 16.3 (2003): 208-214.
- 12 Gazzaruso, Carmine, et al. "Early diagnosis of primary biliary cirrhosis in type 1 diabetes: the possible role of eosinophilia." *Diabetes care* 26.10 (2003): 2963-2964.
- 13 Hanukoglu, Aaron, et al. "Extrapancreatic autoimmune manifestations in type 1 diabetes patients and their first-degree relatives: a multicenter study." *Diabetes care* 26.4 (2003): 1235-1240.
- 14 Shimomura, Hiroko, et al. "A rare case of autoimmune polyglandular syndrome type 3." *Diabetes research and clinical practice* 61.2 (2003): 103-108.
- 15 Lambert, A. Paul, et al. "Absolute risk of childhood-onset type 1 diabetes defined by human leukocyte antigen class II genotype: a population-based study in the United Kingdom." *The Journal of Clinical Endocrinology & Metabolism* 89.8 (2004): 4037-4043.
- 16 Sanchez-Albisua, I., et al. "Coeliac disease in children with type 1 diabetes mellitus: the effect of the gluten-free diet." *Diabetic Medicine* 22.8 (2005): 1079-1082.
- 17 Barker, Jennifer M., et al. "Endocrine and immunogenetic testing in individuals with type 1 diabetes and 21-hydroxylase autoantibodies: Addison's disease in a high-risk population." *The Journal of Clinical Endocrinology & Metabolism* 90.1 (2005): 128-134.
- 18 Nielsen, Nete M., et al. "Type 1 diabetes and multiple sclerosis: a Danish population-based cohort study." *Archives of neurology* 63.7 (2006): 1001-1004.
- 19 Anaya, Juan-Manuel, et al. "Familial clustering of autoimmune diseases in patients with type 1 diabetes mellitus." *Journal of autoimmunity* 26.3 (2006): 208-214.
- 20 Goh, C., and K. Banerjee. "Prevalence of coeliac disease in children and adolescents with type 1 diabetes mellitus in a clinic based population." *Postgraduate medical journal* 83.976 (2007): 132-136.
- 21 Wakata, Nobuo, et al. "Myasthenia Gravis and Diabetes Mellitus:-A 35-year Retrospective Study." *Internal Medicine* 46.9 (2007): 557-559.
- 22 Erlich, Henry, et al. "HLA DR-DQ haplotypes and genotypes and type 1 diabetes risk: analysis of the type 1 diabetes genetics consortium families." *Diabetes* 57.4 (2008): 1084-1092.
- 23 De Block, Christophe EM, Ivo H. De Leeuw, and Luc F. Van Gaal. "Autoimmune gastritis in type 1 diabetes: a clinically oriented review." *The Journal of Clinical Endocrinology & Metabolism* 93.2 (2008): 363-371.
- 24 Hemminki, K., et al. "Familial association between type 1 diabetes and other autoimmune and related diseases." *Diabetologia* 52.9 (2009): 1820-1828.
- 25 Bronson, P. G., et al. "Analysis of maternal-offspring HLA compatibility, parent-of-origin and non-inherited maternal effects for the classical HLA loci in type 1 diabetes." *Diabetes, Obesity and Metabolism* 11 (2009): 74-83.

- 26 Kishi A, Kawabata Y, Ugi S, Iwai T, Tanaka Y, Yoshizaki T, Uzu T, Nishio Y, Ikegami H, Kashiwagi A, Maegawa H. The onset of diabetes in three out of four sisters: a Japanese family with type 1 diabetes. A case report. *Endocr J.* 2009;56(6):767-72.
- 27 Van den Driessche, A., et al. "Type 1 diabetes and autoimmune polyglandular syndrome: a clinical review." *Neth J Med* 67.11 (2009): 376-87.
- 28 Nagy, Katalin H., et al. "Type 1 diabetes associated with Hashimoto's thyroiditis and juvenile rheumatoid arthritis: a case report with clinical and genetic investigations." *Pediatric diabetes* 11.8 (2010): 579-582.
- 29 Zeglaoui, H ela, et al. "Type 1 diabetes mellitus, celiac disease, systemic lupus erythematosus and systemic scleroderma in a 15-year-old girl." *Rheumatology international* 30 (2010): 793-795.
- 30 W agner, Ana M., et al. "Predictors of associated autoimmune diseases in families with type 1 diabetes: results from the Type 1 Diabetes Genetics Consortium." *Diabetes/metabolism research and reviews* 27.5 (2011): 493-498.
- 31 Bhadada, Sanjay Kumar, et al. "Prevalence and clinical profile of celiac disease in type 1 diabetes mellitus in north India." *Journal of gastroenterology and hepatology* 26.2 (2011): 378-381.
- 32 Franzese, Adriana, et al. "Potential celiac disease in type 1 diabetes: a multicenter study." *Diabetes research and clinical practice* 92.1 (2011): 53-56.
- 33 Kota, Sunil K., et al. "Clinical profile of coexisting conditions in type 1 diabetes mellitus patients." *Diabetes & Metabolic Syndrome: Clinical Research & Reviews* 6.2 (2012): 70-76.
- 34 Parkkola, Anna, et al. "Extended family history of type 1 diabetes and phenotype and genotype of newly diagnosed children." *Diabetes care* 36.2 (2013): 348-354.
- 35 Parkkola, Anna, et al. "Extended family history of autoimmune diseases and phenotype and genotype of children with newly diagnosed type 1 diabetes." *European Journal of Endocrinology* 169.2 (2013): 171-178.
- 36 Masood, Sadia, et al. "Multiple autoimmune syndromes associated with psoriasis: a rare clinical presentation." *Oman Medical Journal* 29.2 (2014): 130.
- 37 Karavanaki, Kyriaki, et al. "Multiple autoimmunity, type 1 diabetes (T1DM), autoimmune thyroiditis and thyroid cancer: is there an association? A case report and literature review." *Journal of Pediatric Endocrinology and Metabolism* 27.9-10 (2014): 1011-1016.
- 38 D'Souza, Shalome, et al. "Henoch-Sch oenlein purpura and diabetes mellitus in a 9-year-old African-American male." *Pediatric Annals* 43.3 (2014): e61-e64.
- 39 Kuo, Chang-Fu, et al. "Familial risk of Sj gren's syndrome and co-aggregation of autoimmune diseases in affected families: a nationwide population study." *Arthritis & Rheumatology* 67.7 (2015): 1904-1912.
- 40 Fang, Fang, et al. "The autoimmune spectrum of myasthenia gravis: a Swedish population-based study." *Journal of internal medicine* 277.5 (2015): 594-604.
- 41 Kahaly, G. J., and L. Frommer. "Polyglandular autoimmune syndromes." *Journal of endocrinological investigation* 41 (2018): 91-98.
- 42 Ganji, A., Moghbeli, M. Type 1 diabetes and hyperthyroidism in a family with celiac disease after exposure to gluten: a rare case report. *Clin Diabetes Endocrinol* 4, 24 (2018).
- 43 Olamoyegun, Michael Adeyemi, and Oluwabukola Ayodele Ala. "Type 1 diabetes in a Nigerian family-occurrence in three out of four siblings: A case report." *World Journal of Diabetes* 10.10 (2019): 511.
- 44 Johnson, Adejoke M., et al. "A Rare Case Presentation: Diagnosing Primary Biliary Cholangitis in a Male Patient With Concomitant Type 1 Diabetes." *Cureus* 13.7 (2021).
- 45 Benmelouka, Amira Yasmine, et al. "Association between sarcoidosis and diabetes mellitus: a systematic review and meta-analysis." *Expert Review of Respiratory Medicine* 15.12 (2021): 1589-1595.
- 46 Yen, Fu-Shun, et al. "Maternal autoimmune disease associated with a higher risk of offspring with type 1 diabetes: A nationwide mother-child cohort study in Taiwan." *Diabetes & Metabolism* (2023): 101443.
- 47 Kang, Xiaoying, et al. "Type 1 diabetes and microscopic colitis: A nationwide matched case-control study in Sweden." *Alimentary Pharmacology & Therapeutics* (2023).
- 48 Marrosu, Maria Giovanna, et al. "Patients with multiple sclerosis and risk of type 1 diabetes mellitus in Sardinia, Italy: a cohort study." *The Lancet* 359.9316 (2002): 1461-1465.
- 49 Conrad, Nathalie, et al. "Incidence, prevalence, and co-occurrence of autoimmune disorders over time and by age, sex, and socioeconomic status: a population-based cohort study of 22 million individuals in the UK." *The Lancet* (2023).
- 50 Cohen, Jacob. *Statistical power analysis for the behavioral sciences*. Academic press, 2013.