

1 **Title:** Molecular epidemiology of Western equine encephalitis virus in Brazil, 2023-2024

2

3 **Running title:** Western equine encephalitis virus in Brazil

4

5 **Authors:** Aline Scarpellini Campos<sup>1</sup>, Ana Cláudia Franco<sup>2</sup>, Fernanda Godinho<sup>1</sup>, Rosana  
6 Huff<sup>1</sup>, Jader da Cruz Cardoso<sup>1</sup>, Paola Morais<sup>1</sup>, Carolina Franceschina<sup>1</sup>, Thales de Lima  
7 Bermann<sup>2</sup>, Franciellen Machado dos Santos<sup>1</sup>, Milena Bauermann<sup>1</sup>, Tainá Machado  
8 Selayaran<sup>1</sup>, Amanda Pellenz Ruivo<sup>1</sup>, Cristiane Santin<sup>3</sup>, Juciane Bonella<sup>3</sup>, Carla  
9 Rodenbusch<sup>3</sup>, José Carlos Ferreira<sup>3</sup>, Scott C. Weaver<sup>6</sup>, Vilar Ricardo Gewehr<sup>3</sup>, Gabriel  
10 Luz Wallau<sup>4,5</sup>, William M. de Souza<sup>7†,\*</sup>, Richard Steiner Salvato<sup>1,2†,\*</sup>.

11

12 **Affiliations:**

13 <sup>1</sup> Secretaria de Saúde do Estado do Rio Grande do Sul, Porto Alegre, Rio Grande do  
14 Sul, Brazil

15 <sup>2</sup> Universidade Federal do Rio Grande do Sul, Porto Alegre, Rio Grande do Sul, Brazil.

16 <sup>3</sup> Secretaria de Agricultura do Estado do Rio Grande do Sul, Porto Alegre, Rio Grande  
17 do Sul, Brazil.

18 <sup>4</sup> Fundação Oswaldo Cruz, Recife, Pernambuco, Brazil.

19 <sup>5</sup> Bernhard Nocht Institute for Tropical Medicine, Hamburg, Germany.

20 <sup>6</sup> University of Texas Medical Branch, Galveston, Texas, USA.

21 <sup>7</sup> University of Kentucky, Lexington, Kentucky, USA.

22

23 <sup>†</sup> These senior authors contributed equally to this work.

24 \*Correspondence to: [wmdesouza@uky.edu](mailto:wmdesouza@uky.edu) and [richardssalvato@gmail.com](mailto:richardssalvato@gmail.com)

25

## 26 **Abstract**

27 During the ongoing western equine encephalitis virus (WEEV) outbreak in South  
28 America, we described three fatal cases in horses from Rio Grande do Sul, Brazil. We  
29 sequenced WEEV strains and identified a novel lineage causing these cases.  
30 Continued surveillance and horse immunization are needed to mitigate the WEEV  
31 burden.

32

## 33 **Text**

34 Western equine encephalitis virus (WEEV) is a mosquito-borne alphavirus that causes  
35 central nervous system (CNS) infection in humans and equids in the United States of  
36 America (USA), Canada, and the southern cone of South America (1). WEEV is  
37 transmitted in enzootic and epizootic transmission cycles mainly by mosquitoes of the  
38 *Culex* and *Aedes* genera among birds and lagomorphs, which can lead to sporadic  
39 spillover to equids and humans (2, 3). In humans, WEEV infections are usually mild or  
40 asymptomatic, with fever, headache, and myalgia (4). Some patients develop  
41 encephalitis, which can be fatal in 5%-15% of cases (5). In equids, WEEV infection can  
42 cause neurological disease (blindness, staggering, and seizures), often leading to death  
43 within days with high case-fatality rates. At present, no specific treatments or vaccines  
44 are available to treat or prevent WEEV infection in humans, but inactivated vaccines  
45 effectively prevent the disease in equines.

46           The largest WEEV outbreaks, with tens-of-thousands of equid and more than  
47 3,000 human cases, were reported in the 1930s-40s. However, fewer than 700  
48 confirmed cases were reported in the USA after the 1960s and none has been reported  
49 during the past 3 decades (1, 4). Similarly, major outbreaks occurred in South America  
50 during the 1970s and 1980s, followed by isolated cases mainly in Argentina in 1996 and  
51 Uruguay in 2009 (1, 6, 7). In December 2023, a significant WEEV re-emergence began  
52 with an ongoing major outbreak in Argentina and Uruguay. As of April 2024, there have  
53 been 103 confirmed human cases, 10 of them fatal, and 128 confirmed equine cases,  
54 with the majority fatal (8). In this study, we investigated active WEEV circulation in Rio  
55 Grande do Sul, Brazil, a state bordering Argentina, and Uruguay.

56

## 57 **The study**

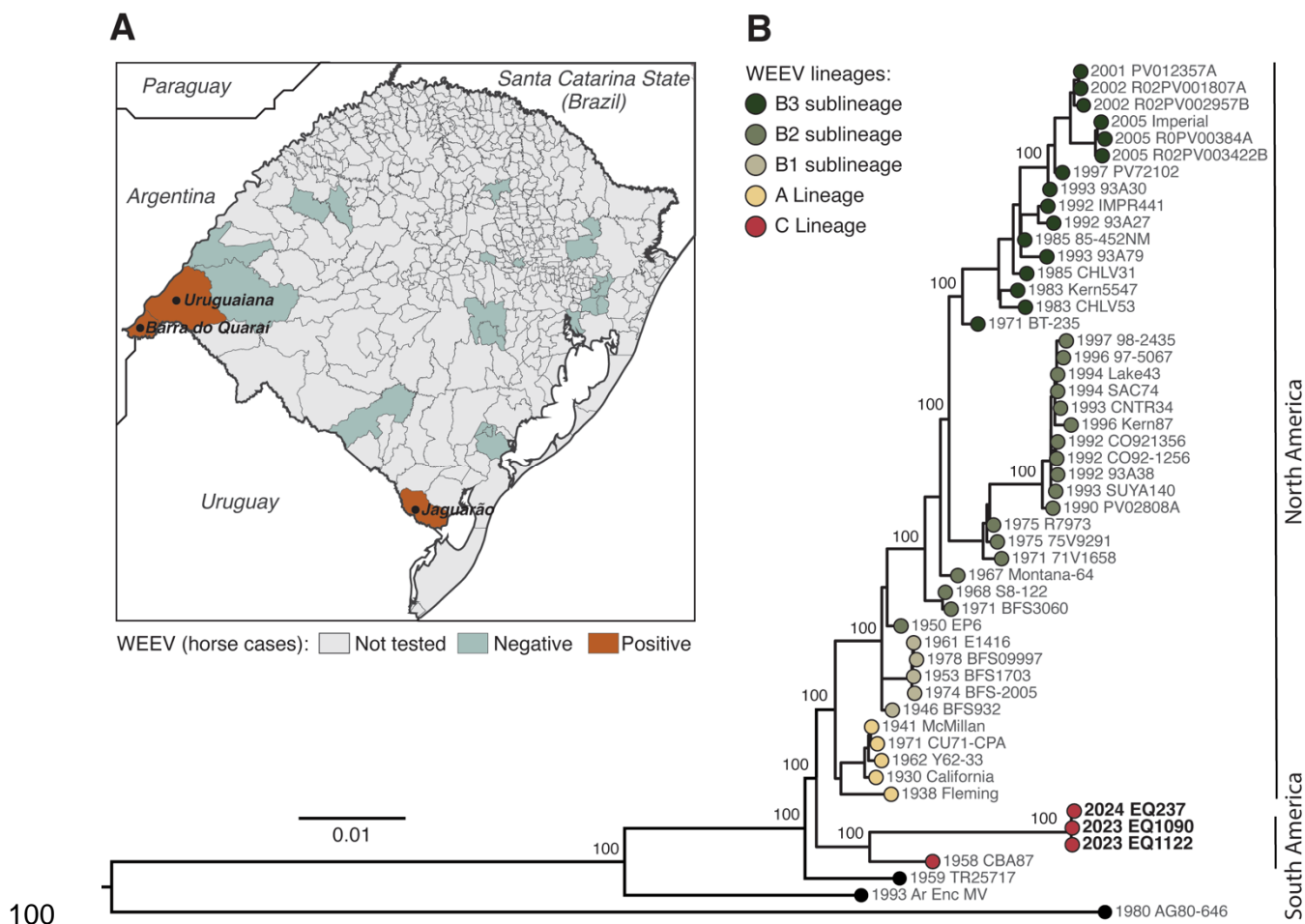
58           From December 2023 to April 2024, we conducted a two-pronged approach to  
59 investigate the presence of WEEV in Rio Grande do Sul, Brazil. First, we performed  
60 molecular screening in brain tissue samples from fatal horse cases, which were  
61 submitted to the Center for Health Surveillance of Rio Grande do Sul State between  
62 January 1, 2023 and April 10, 2024. Second, we carried out entomological surveillance  
63 in the Uruguiana municipality. We focused on two horse breeding farms with a recent  
64 history of neurological equine disease, one case which was later confirmed as a WEEV-  
65 positive. Mosquitoes were collected using CDC light and Biogents BG-Pro traps placed  
66 near horses and vegetation, then classified based on morphological identification and  
67 partial sequencing of the *cytochrome oxidase I* gene (**Appendix**).

68 We captured 971 mosquitoes across seven genera that were combined into 117  
69 pools for analysis. The most prevalent genus was *Culex*, with 68.4% (664/971). From  
70 January 1, 2023 and April 10, 2024, we received brain samples of 31 fatal horse cases  
71 from 4.4% (22/497) of municipalities in Rio Grande do Sul State. Brain tissue fragments  
72 ( $\approx 2 \text{ g/cm}^3$ ) were homogenized with 800 $\mu\text{L}$  of TRIzol, while mosquitoes were  
73 homogenized with phosphate-buffered saline. Next, we extracted RNA from all samples  
74 and performed real-time reverse transcription-PCR (rRT-PCR) to detect WEEV RNA  
75 (9). Then, we carried out sequencing using the Illumina Viral Surveillance Panel  
76 (Illumina, USA) and conducted maximum-likelihood phylogenetic inferences  
77 **(Appendix).**

78 Of 31 horse brain tissue samples tested by rRT-PCR, we detected WEEV RNA in  
79 3 (9.7%) with cycle threshold (Ct) values of 26-27 (**Fig. A**). All three horses exhibited  
80 signs of neurological disease (i.e., paralysis and incoordination) and were not  
81 vaccinated against WEEV. The first two horses were two months and two years old,  
82 respectively, and died on December 21 and 28, 2023, in Barra do Quaraí and  
83 Uruguaiana municipalities, respectively. These municipalities are located on the  
84 Brazilian border with Argentina and Uruguay. The third case was a five-month-old horse  
85 that died on January 30, 2024, in Jaguarão municipality, bordering Uruguay.  
86 Additionally, 3 fatal horse cases were positive for Rabies virus by rRT-PCR (**Appendix**  
87 **Table S1**). All mosquito pools tested negative for WEEV, eastern equine encephalitis,  
88 West Nile, St. Louis encephalitis, Mayaro, and Oropouche viruses.

89 Next, we used Illumina sequencing to generate the nearly complete ( $\geq 98\%$ )  
90 coding sequences for three WEEV strains with a mean depth of coverage of 606-

91 fold/nucleotide. We submitted sequences to GenBank (accession nos. PP544260,  
 92 [XXXXXXX](#), [XXXXXXX](#)). The maximum-likelihood phylogenetic analysis showed that  
 93 three WEEV strains circulating in the Rio Grande do Sul State in 2024 clustered  
 94 together in a distinct, well-supported clade (100% bootstrap). This clade represents a  
 95 novel WEEV lineage closely related to the CB87 strain documented in the 1960s in  
 96 Argentina, which we proposed as the C lineage (**Fig. B**). These novel strains shared 97-  
 97 100% nucleotide sequence identity, including with the CB87 strain. No evidence of  
 98 recombination was found in these WEEV strains.  
 99



101 **Figure 1. Molecular epidemiology of Western equine encephalitis virus in Rio**  
102 **Grande do Sul State, Brazil. A)** Map of fatal horse cases positive by rRT-PCR for  
103 WEEV (red), per municipality, in Rio Grande do Sul State between December 2023 and  
104 April 2024. The cases occurred occurred in Barra do Quaraí on 21 December 2023  
105 (EQ1090), Uruguaiana on 28 December 2023 (EQ1122), and in Jaguarão on 30  
106 January 2024 (EQ237). The municipalities tested are described in Appendix Table S1.  
107 **B)** Maximum likelihood phylogenetic tree of WEEV, including three new WEEV  
108 genomes (red dots) from Rio Grande do Sul State generated in this study. The  
109 phylogeny is midpoint rooted. The scale bar indicates the evolutionary distance of  
110 substitutions per nucleotide. Bootstrap values based on 1,000 replicates are shown on  
111 principal nodes. The GenBank accession numbers of sequences used in this figure are  
112 presented in Appendix Table S4.

113

## 114 **Conclusion**

115 We identified a novel WEEV lineage associated with the ongoing outbreak in  
116 South America, detected in three fatal horse cases from Rio Grande do Sul, Brazil. This  
117 new lineage forms a distinct evolutionary clade evolving independently for many  
118 decades from those circulating in North America (1, 4, 10). These findings suggest that  
119 WEEV has been circulating in South America over the past 15 years, with cases likely  
120 unreported. We hypothesize two possible explanations for this recent lack of reported  
121 WEEV cases. Limited enzootic circulation of the WEEV between vectors and  
122 resident/migratory birds, or a lack of WEEV surveillance, particularly in rural or remote  
123 areas, where cases might go undetected.

124           Some experimental murine model studies indicate reduced virulence of recent  
125 WEEV isolates (B3 strains) compared to earlier isolates (A, B1, B2 strains), which could  
126 explain decreased human and equine cases in North America (1, 4, 11). However, the  
127 large numbers of neurological and fatal cases in humans and equines in Argentina,  
128 Brazil, and Uruguay (2023-2024), suggest that contemporary WEEV strains circulating  
129 in South America might be more virulent than those currently circulating in North  
130 America. Further research is needed to elucidate the virulence determinants that might  
131 explain this apparent difference between South and North American WEEV lineages.

132           This study has several limitations. First, we focused on identifying active WEEV  
133 infections using molecular methods only in fatal horse cases. Horses with mild signs of  
134 the disease should also be tested. Also, age-stratified serological studies are needed to  
135 determine the extent of previous WEEV exposure in the equine and human populations  
136 and patterns of past infections. Second, we did not detect the WEEV RNA in  
137 mosquitoes. Although our entomological investigation shows that the *Culex spp.* were  
138 the most abundant mosquito species in the region, further studies with an emphasis on  
139 the previously incriminated *Aedes albifasciatus* (3, 12) are needed to better understand  
140 the transmission dynamics of WEEV in South America. Third, we were unable to  
141 determine whether ecological drivers were associated with the current outbreaks, but  
142 further studies should investigate the climate factors, anthropogenic changes, and  
143 migratory bird routes and activity (13).

144           In conclusion, our study identified active WEEV circulation in Rio Grande do Sul,  
145 Brazil, and a novel viral lineage associated with fatal horse cases. These findings  
146 highlight the critical need for continuous laboratory diagnosis and surveillance for WEEV

147 in both horses and humans, as well as ecological studies using a One Health approach  
148 to understand better the transmission dynamics and ecological drivers contributing to  
149 WEEV re-emergence in South America. Finally, horse immunization should be  
150 considered to mitigate the impact on animal health.

151

## 152 **Funding**

153 This study was supported by Fundação de Amparo à Pesquisa do Estado do Rio  
154 Grande do Sul and the Fundação Oswaldo Cruz (grant no. 23/2551-0000510-7). R.S.S  
155 was supported by National Council for Scientific and Technological Development  
156 (CNPq) and Fundação de Amparo à Pesquisa do Estado do Rio Grande do Sul (grant  
157 no. 07/2022). G.L.W had support from a CNPq - 1D productivity research fellowship  
158 (307209/2023-7). WMdS was supported by Burroughs Wellcome Fund (grant no.  
159 1022448), and Wellcome Trust–Digital Technology Development award (Climate  
160 Sensitive Infectious Disease Modelling; 226075/Z/22/Z). SCW was supported by  
161 National Institutes of Health grants no. AI12094, U01AI151801, and AI121452.

162

## 163 **References**

- 164 1. Bergren NA, Auguste AJ, Forrester NL, Negi SS, Braun WA, Weaver SC. Western  
165 equine encephalitis virus: evolutionary analysis of a declining alphavirus based on complete  
166 genome sequences. *J Virol.* 2014;88(16):9260-7.
- 167 2. Calisher CH, Monath TP, Mitchell CJ, Sabattini MS, Cropp CB, Kerschner J, et al.  
168 Arbovirus investigations in Argentina, 1977-1980. III. Identification and characterization of  
169 viruses isolated, including new subtypes of western and Venezuelan equine encephalitis viruses



- 170 and four new bunyaviruses (Las Maloyas, Resistencia, Barranqueras, and Antequera). *Am J*  
171 *Trop Med Hyg.* 1985;34(5):956-65.
- 172 3. Avilés G, Sabattini MS, Mitchell CJ. Transmission of western equine encephalomyelitis  
173 virus by Argentine *Aedes albifasciatus* (Diptera: Culicidae). *J Med Entomol.* 1992;29(5):850-3.
- 174 4. Bergren NA, Haller S, Rossi SL, Seymour RL, Huang J, Miller AL, et al. "Submergence"  
175 of Western equine encephalitis virus: Evidence of positive selection argues against genetic drift  
176 and fitness reductions. *PLoS Pathog.* 2020;16(2):e1008102.
- 177 5. Cohen R, O'Connor RE, Townsend TE, Webb PA, McKey RW. Western equine  
178 encephalomyelitis; clinical observations in infants and children. *J Pediatr.* 1953;43(1):26-34.
- 179 6. Aviles G, Bianchi TI, Daffner JF, Sabattini MS. [Post-epizootic activity of Western equine  
180 encephalitis virus in Argentina]. *Rev Argent Microbiol.* 1993;25(2):88-99.
- 181 7. Delfraro A, Burgueño A, Morel N, González G, García A, Morelli J, et al. Fatal human  
182 case of Western equine encephalitis, Uruguay. *Emerg Infect Dis.* 2011;17(5):952-4.
- 183 8. Pan American Health Organization. Encefalitis Equina del Oeste en la Región de las  
184 Américas. [Cited 2024 April 15]. <https://shiny.paho-phe.org/encephalitis/2024> [
- 185 9. Lambert AJ, Martin DA, Lanciotti RS. Detection of North American eastern and western  
186 equine encephalitis viruses by nucleic acid amplification assays. *J Clin Microbiol.*  
187 2003;41(1):379-85.
- 188 10. Weaver SC, Kang W, Shirako Y, Rumenapf T, Strauss EG, Strauss JH.  
189 Recombinational history and molecular evolution of western equine encephalomyelitis complex  
190 alphaviruses. *J Virol.* 1997;71(1):613-23.
- 191 11. Mossel EC, Ledermann JP, Phillips AT, Borland EM, Powers AM, Olson KE. Molecular  
192 determinants of mouse neurovirulence and mosquito infection for Western equine encephalitis  
193 virus. *PLoS One.* 2013;8(3):e60427.
- 194 12. Cardoso J, E C, Barata J. Culicinae (Diptera, Culicidae) ocorrentes no Estado do Rio  
195 Grande do Sul, Brasi. *Revista Brasileira de Entomologia*; 2005.

- 196 13. de Souza WM, Weaver SC. Effects of climate change and human activities on vector-  
197 borne diseases. Nat Rev Microbiol. 2024.