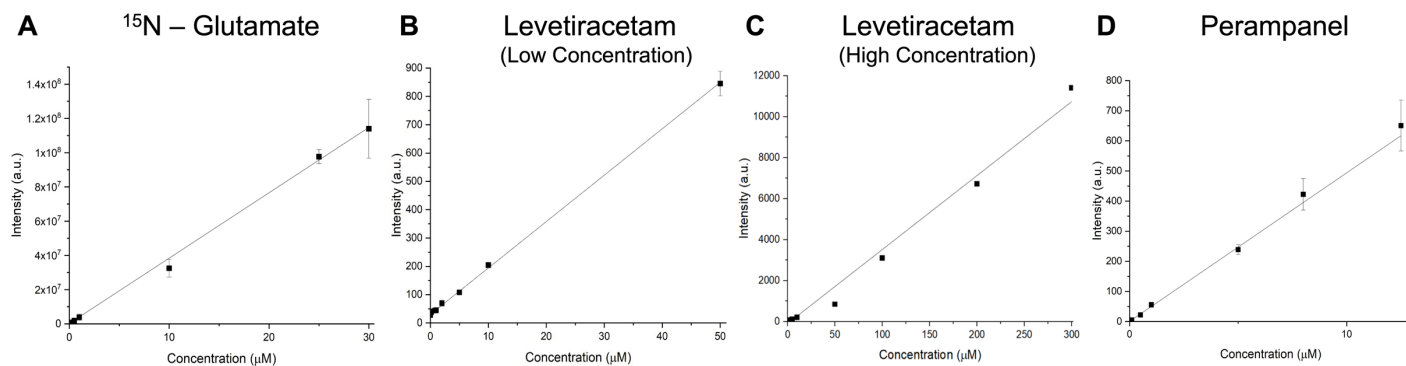


## Supplementary Data



**Supplementary Figure 1. MALDI Calibration Curves.** (A)  $^{15}\text{N}_1$  – glutamate, normalized to internal standard ( $\text{IS}$ )  $\text{D}_5$  – glutamate. (B,C) Levetiracetam; low concentration (B) and high concentration (C), normalized to  $\text{IS}$   $\text{D}_6$  – levetiracetam. (D) Perampanel, normalized to  $\text{IS}$  panobinostat. All calibration curves were calculated using a weighted linear regression ( $1/x^2$ ).

<b>LLOQ</b>	0.71 µM	0.0025 µM	0.12 µM	0.00025 µM	0.0005 µM	0.00025 µM
<b>LOD</b>	0.21 µM	0.0025 µM	0.03 µM	0.00025 µM	0.0017 µM	0.00025 µM

	Levetiracetam Conc. (µM)		Perampanel Conc. (µM)		Glutamate Conc. (mM)		Lactate/Pyruvate Ratios
Patient ID	MALDI-ToF	LC-MS/MS	MALDI-ToF	LC-MS/MS	MALDI-FTICR	LC-MS/MS	MALDI-FTICR
Case 1 sample 1a	99.78	172.00	0.17	1.43	4.51	5.68	19.1
Case 1 sample 3c	143.28	178.00	0.16	1.44	4.06	7.48	22.7
Case 1 sample 4d	174.11	165.00	0.25	0.87	1.52	3.36	23.2
Case 1 sample 5e	123.38	151.00	0.19	1.51	1.62	5.04	17.9
Case 1 sample 6f	99.18	160.00	0.22	0.86	0.70	1.58	19.1
Case 2 sample 1a	2.65	1.95	0.17	0.25	3.81	5.35	3.6
Case 2 sample 2b	2.47	5.65	0.17	0.20	4.77	1.44	2.8
Case 2 sample 3c	1.48	3.61	0.17	0.10	3.86	1.49	5.1
Case 2 sample 4d	0.37	0.19	0.24	0.62	3.06	4.61	4.6
Case 3 sample 1a	43.99	56.17	NA	NA	9.21	9.90	6.4
Case 3 sample 2b	27.22	45.80	NA	NA	7.82	4.00	8.4
Case 3 sample 3c	29.31	11.90	NA	NA	3.19	6.24	2.5
Case 3 sample 4d	66.55	88.20	NA	NA	3.40	6.78	11
Case 4 sample 1a	7.68	6.56	0.20	0.00	1.22	0.66	14.7
Case 4 sample 2b	7.12	9.60	0.20	0.00	2.41	3.07	13.2
Case 4 sample 3c	6.20	6.01	0.18	0.00	0.23	4.09	6.3
Case 5 sample 1a	40.95	NA	NA	NA	1.37	NA	8.6
Case 5 sample 2b	39.92	12.20	NA	NA	1.60	0.69	7.8
Case 5 sample 3c	99.00	149.00	NA	NA	2.46	1.09	19
Case 6 sample 1a	2.84	1.05	0.04	0.03	0.16	4.48	1
Case 6 sample 2b	2.36	2.45	0.04	0.00	0.25	4.51	1.3
Case 6 sample 4d	1.05	0.36	0.00	0.00	0.28	1.31	0.9
Case 6 sample Frz	9.11	13.10	0.10	0.23	1.02	0.38	1.7
Case 7 sample 1a	22.73	21.90	0.12	0.00	8.49	8.80	2.2
Case 7 sample 2b	39.57	27.30	0.16	0.00	5.34	6.15	4.8
Case 7 sample 3c	30.07	23.60	0.11	0.00	7.47	11.90	3.3
Case 7 sample 4d	15.40	NA	0.07	NA	5.40	NA	17
Case 8 sample 1a	71.39	94.50	NA	NA	3.14	0.77	15.5
Case 8 sample 3c	76.04	126.00	NA	NA	2.47	4.04	11.9
Case 8 sample 4d	54.88	129.46	NA	NA	5.50	1.13	10.4
Case 8 sample 5e	62.14	104.23	NA	NA	2.54	2.93	6.8

Case 8 sample 6f	67.29	116.00	NA	NA	4.75	4.64	14.8
Case 9 sample 1a	7.14	15.10	0.16	0.85	7.16	4.96	11.6
Case 9 sample 2b	1.71	6.70	0.14	1.01	2.85	6.32	3.4
Case 9 sample 3c	0.00	1.06	0.12	0.47	3.54	2.72	3.6
Case 9 sample 4d	0.40	2.40	0.15	0.76	4.02	3.38	3.3
Case 9 sample 5e	3.00	9.62	0.14	1.06	5.60	4.48	6.1
Case 10 sample 1a	0.00	4.65	0.13	0.74	6.25	5.64	24.8
Case 10 sample 2b	0.00	0.33	0.13	0.56	1.20	3.02	7.6
Case 10 sample 3c	0.00	0.11	0.13	0.25	3.39	1.78	10.7
Case 10 sample 4d	0.44	0.22	0.16	0.81	3.54	3.10	NA
Case 11 sample 1a	0.00	0.14	0.09	0.79	1.09	1.07	1.9
Case 11 sample 2b	2.42	0.03	0.11	0.23	2.48	2.24	44.8
Case 11 sample 3c	0.00	0.00	0.12	1.26	2.73	1.92	5
Case 12 sample 1a	63.24	111.00	NA	NA	3.39	1.33	3.7
Case 12 sample 2b	142.24	92.54	NA	NA	2.20	4.96	4.4

**Supplementary Table 1.** Mass Spectrometry Data. Cells with NA indicate exclusion due to treatment assignment or insufficient tissue for analysis. LLOQ, lower limit of quantitation; LOD, limit of detection.