

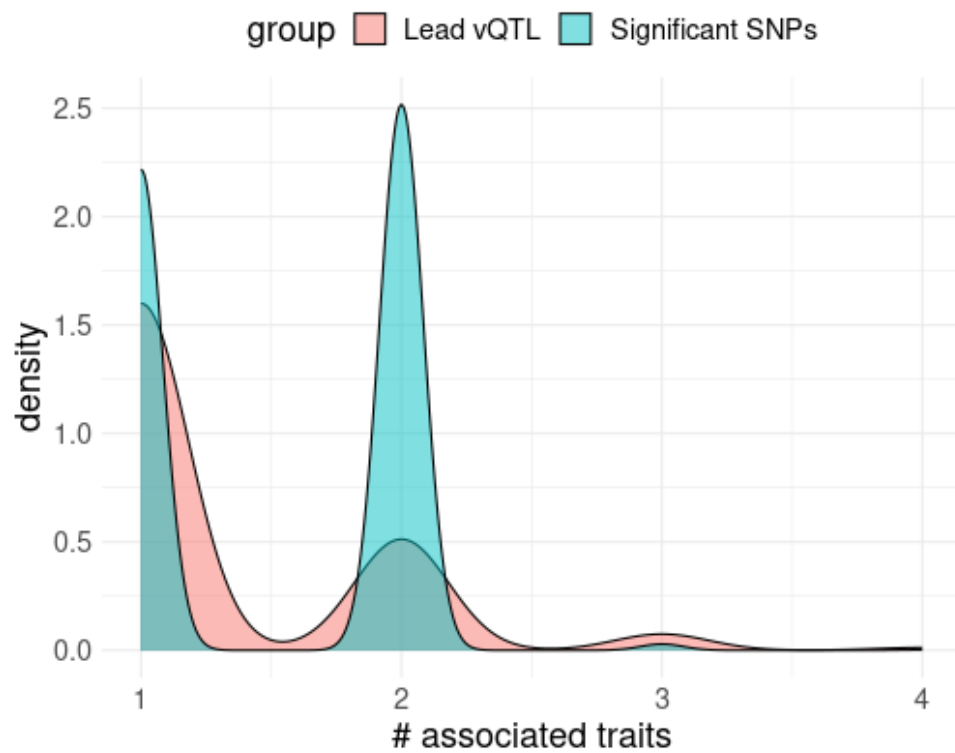
Genome-wide analyses of variance in blood cell phenotypes provide new insights into complex trait biology and prediction

Ruidong Xiang^{1-5,*}, Yang Liu^{1,2,6-9}, Chief Ben-Eghan^{2,6-9}, Scott Ritchie^{1,2,6-9}, Samuel A. Lambert^{1,2,6-9}, Yu Xu^{2,6-9}, Fumihiko Takeuchi^{1,10} and Michael Inouye^{1,2,6-9,*}

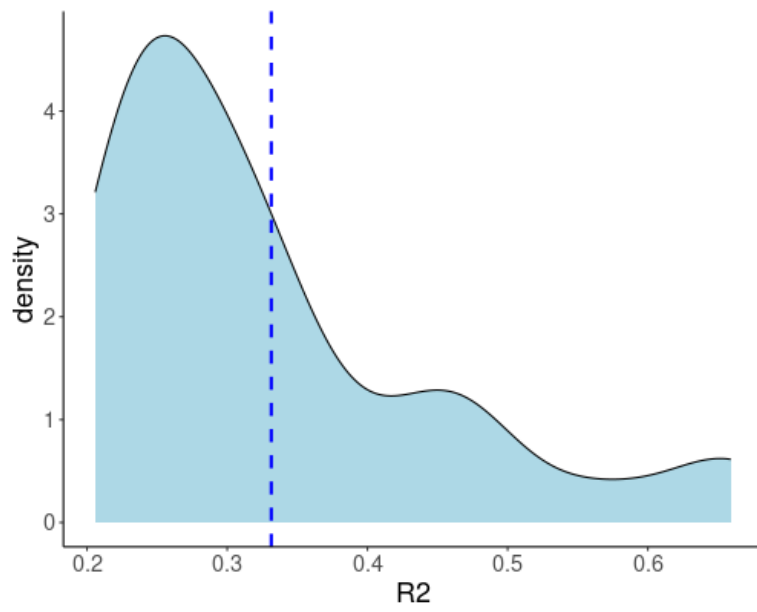
1. Cambridge Baker Systems Genomics Initiative, Baker Heart and Diabetes Institute, Melbourne, Victoria, Australia
2. Cambridge Baker Systems Genomics Initiative, Department of Public Health and Primary Care, University of Cambridge, Cambridge, UK
3. Agriculture Victoria, AgriBio, Centre for AgriBioscience, Bundoora, Victoria 3083, Australia
4. Baker Department of Cardiovascular Research, Translation and Implementation, La Trobe University, Melbourne, VIC, 3086, Australia
5. Baker Department of Cardiometabolic Health, The University of Melbourne, VIC, 3010, Australia
6. British Heart Foundation Cardiovascular Epidemiology Unit, Department of Public Health and Primary Care, University of Cambridge, Cambridge, UK
7. Victor Phillip Dahdaleh Heart and Lung Research Institute, University of Cambridge, Cambridge, UK
8. Health Data Research UK Cambridge, Wellcome Genome Campus and University of Cambridge, Cambridge, UK
9. British Heart Foundation Centre of Research Excellence, University of Cambridge, Cambridge, UK
10. Department of Gene Diagnostics and Therapeutics, Research Institute, National Center for Global Health and Medicine, Tokyo, Japan

* Correspondence: R.X. (ruidong.xiang@agriculture.vic.gov.au) and M.I. (mi336@cam.ac.uk)

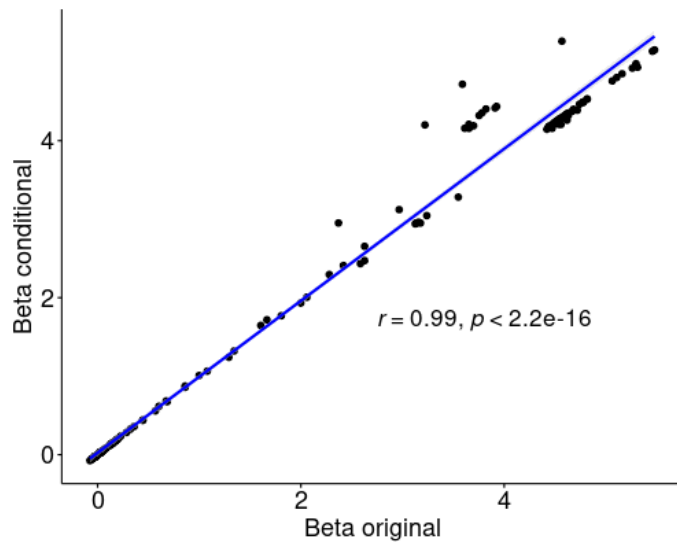
This file contains:
Supplementary Figures 1-6



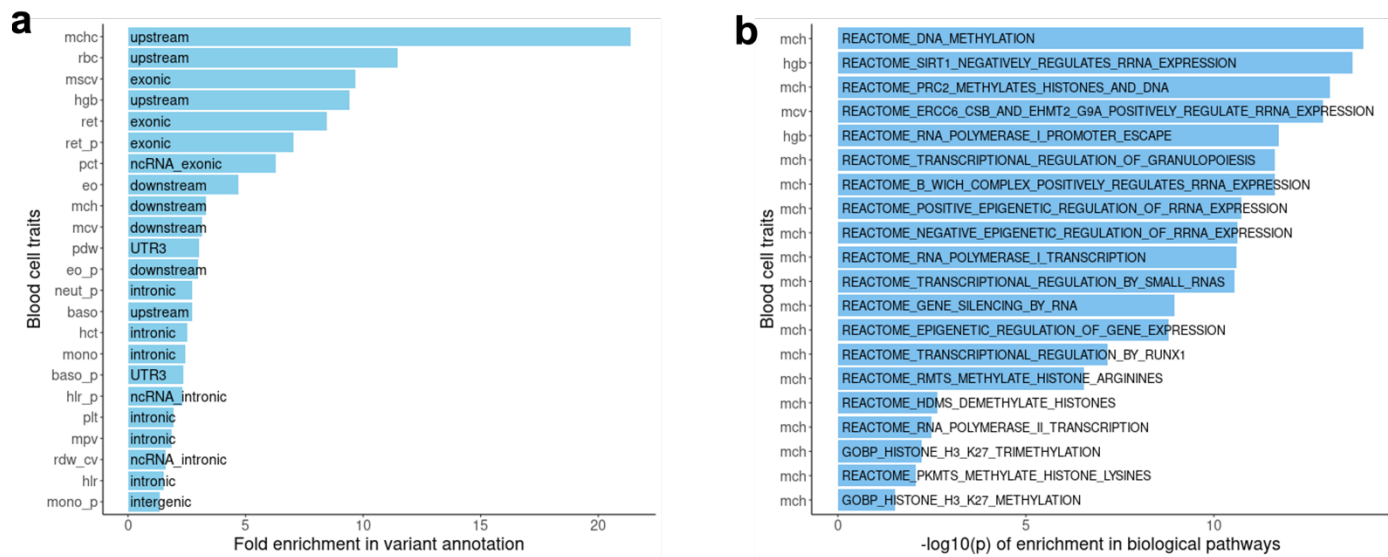
Supplementary Figure 1. Pleiotropy of vQTL. Lead QTLs were clumped with $LD-r^2 < 0.01$. Significant SNPs (not clumped) were associated with the variance of any traits with $p < 4.6 \times 10^{-9}$.



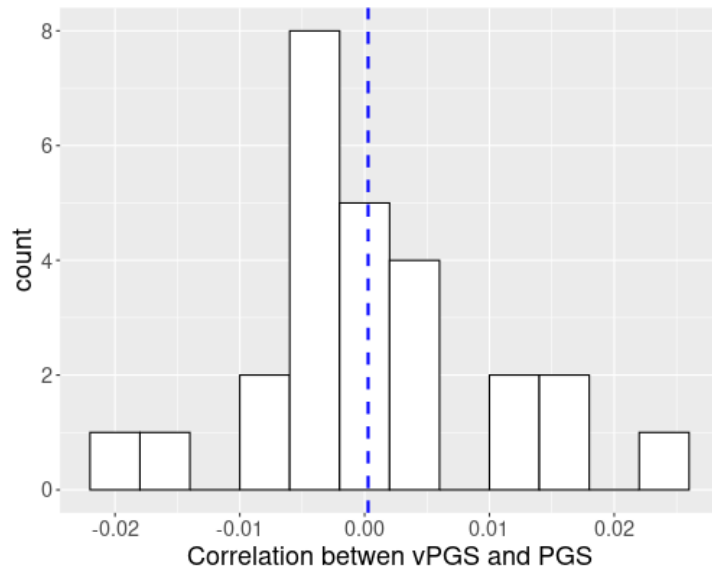
Supplementary Figure 2. Distribution of LD-r2 between novel lead vQTL identified in the current study and lead SNPs reported by Vuckovic et al 2020¹.



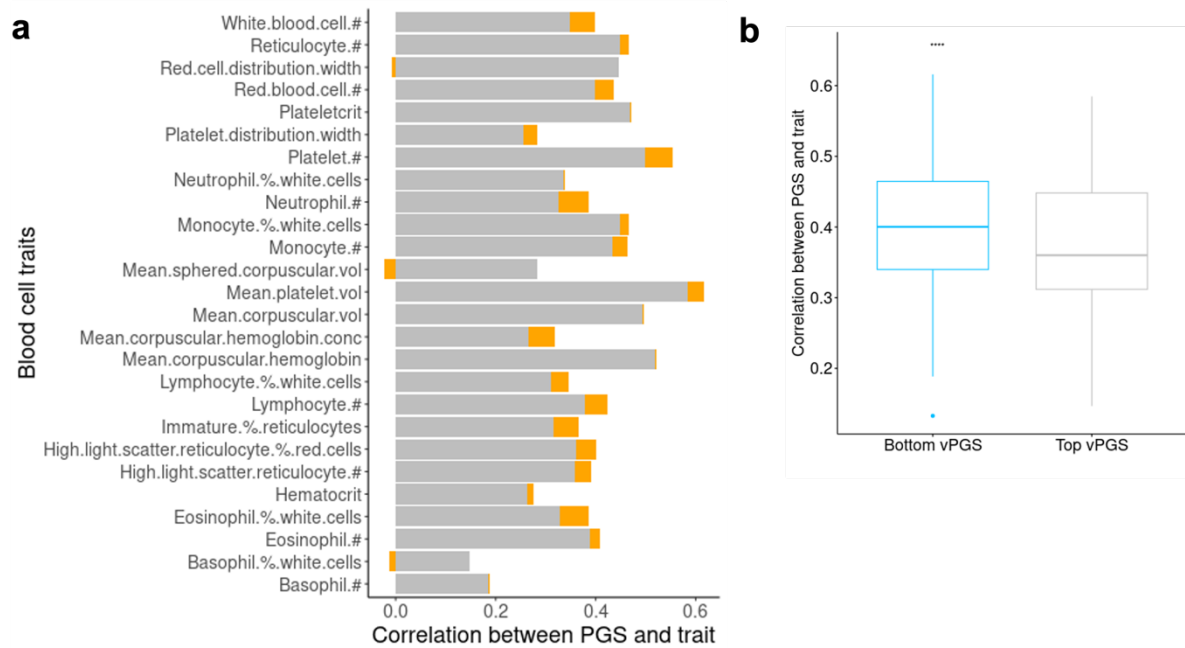
Supplementary Figure 3. Correlation of effects of 176 vQTL between original analyses and conditional analysis on the trait level.



Supplementary Figure 4. a: Best enrichment of class of functional consequences (ANNOVAR) in lead vQTLs for each blood cell trait. **b:** Best enrichment of biological pathways related to gene regulation in lead vQTLs for each blood cell trait. All enrichment analyses were conducted using FUMA and only enrichments with multi-testing adjusted p-value < 0.05 are shown.



Supplementary Figure 5. Distribution of correlation between vPGS and PGS across 27 traits in INTERVAL. The blue line indicates the mean ($r = 0.00028$) of correlation across traits.



Supplementary Figure 6. The variation in the accuracy of PGSs for 27 blood cell traits (spearman correlation) between the top and bottom vPGS groups. **a:** Accuracy of PGS in the top vPGS group (more variable group, grey colour) and the difference (orange) of PGS between the top vPGS group and the bottom vPGS group (less variable group). #: count; % percentage; vol: volume; conc: concentration. **b:** difference of accuracy of PGS between the bottom and top vPGS groups across 27 blood cell traits. ****: $p < 0.0001$.

References:

- 1 Vuckovic, D. *et al.* The polygenic and monogenic basis of blood traits and diseases. *Cell* **182**, 1214-1231. e1211 (2020).