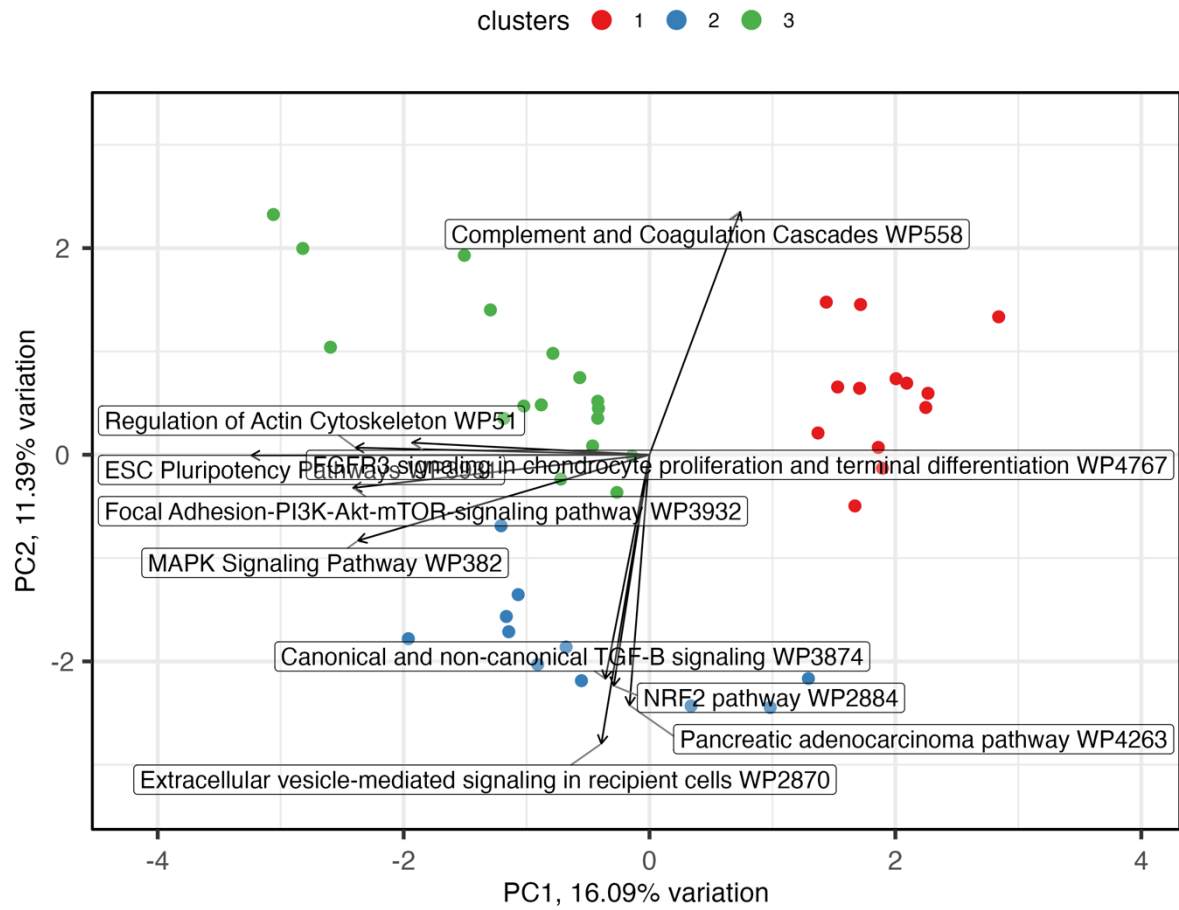
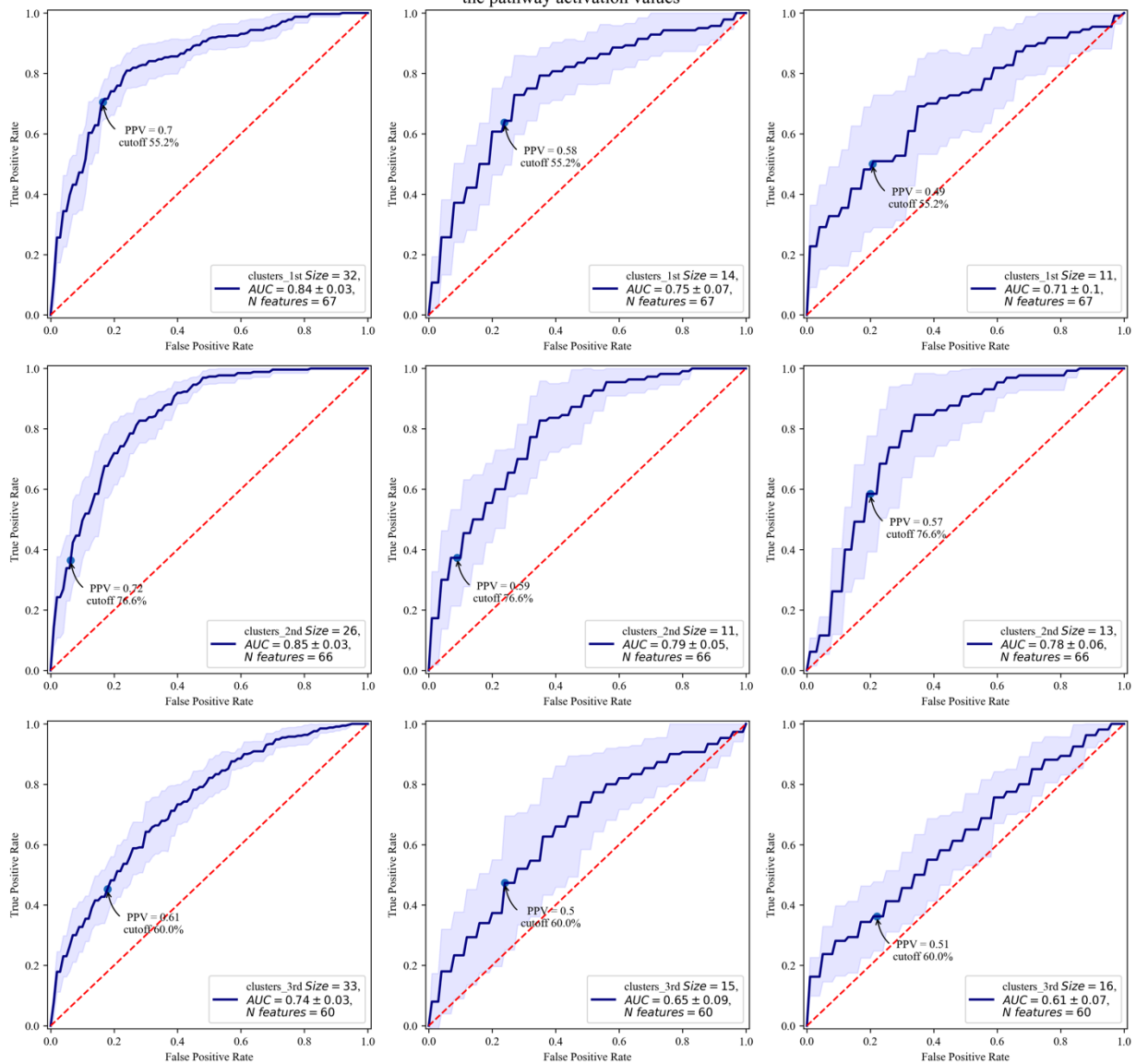


Supplementary figures



Supplementary Figure 1: PCA plot of pathway volumes from the Liège validation cohort.

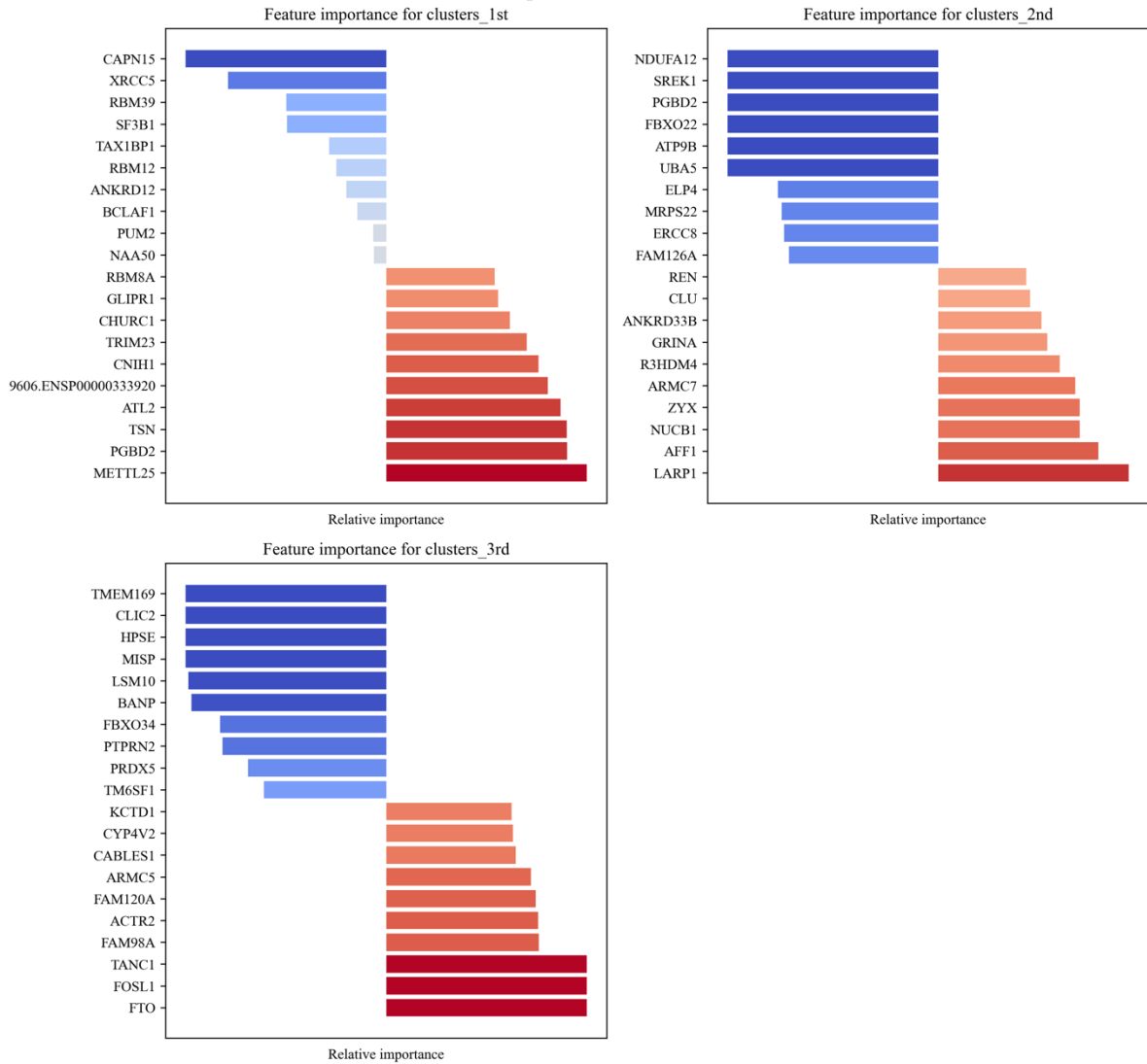
Regression performed on 10 splits, selected features are the first 12 pathways with highest Pathway activation value with respect to each train set, regression data is the pathway activation values



Supplementary Figure 2:

ROC curves for the different clusters, using the same parameters, in this case, selecting the **N** highest pathways in term of activation volume (squared sum of Log2 Fold Change of the pathways) and computing the regression model on the matrix, which entries were such activation volumes per each sample, created by TopMD. First and second columns contain ROC curves for the 10 pair of training and test sets, balanced in terms of the classes, such that the union of each pair is the whole Unifi dataset. The third column instead represents the ROC curves of the predictions of such models on the LIEGE dataset. An optimal cutoff value for classification from LR prediction was computed for each class, using the slope of the ROC curves on different cutoff values.

Regression performed on 10 splits, selecting features (genes) using their TopMD distribution on the train sets and TopMD values in the regression matrices, using the top 20 mRNAs



Supplementary Figure 3:

Average relative importance of each variable used in the regression models in Figure 2, only the 10 highest and 10 lowest, when present are plotted. Colour ranges from red (high and positive) to blue (low and negative) depending on the average relative importance.

Supplementary Tables

Supplementary Table 1: CT scan observations from Florence and Liège cohorts

Characteristic	N	N = 109 ¹
COVID-19 Diagnosis based on CORADS	109	
1: Very Low		3 (2.8%)
2: Low		5 (4.6%)
3: Equivocal/unsure		28 (26%)
4: High		44 (40%)
5: Very High		29 (27%)
LUL	109	
0: 0%		3 (2.8%)
1: 0-5%		18 (17%)
2: 5-25%		46 (42%)
3: 25-50%		24 (22%)
4: 50-75%		15 (14%)
5: 75%+		3 (2.8%)
LLL	109	
0: 0%		4 (3.7%)
1: 0-5%		5 (4.6%)
2: 5-25%		39 (36%)
3: 25-50%		28 (26%)
4: 50-75%		17 (16%)
5: 75%+		16 (15%)

RUL	109
0: 0%	8 (7.3%)
1: 0-5%	17 (16%)
2: 5-25%	46 (42%)
3: 25-50%	16 (15%)
4: 50-75%	15 (14%)
5: 75%+	7 (6.4%)
RML	109
0: 0%	7 (6.4%)
1: 0-5%	21 (19%)
2: 5-25%	47 (43%)
3: 25-50%	19 (17%)
4: 50-75%	9 (8.3%)
5: 75%+	6 (5.5%)
RLL	109
0: 0%	2 (1.8%)
1: 0-5%	8 (7.3%)
2: 5-25%	31 (28%)
3: 25-50%	40 (37%)
4: 50-75%	16 (15%)
5: 75%+	12 (11%)
Patterns	133
Crazy paving	13 (9.8%)

Emphysema	3 (2.3%)
GGO and consolidation	80 (60%)
Multi-focal	8 (6.0%)
None	1 (0.8%)
Only consolidation	3 (2.3%)
Only GGO	25 (19%)
Distributions	152
Apical	2 (1.3%)
Bronchocentric	14 (9.2%)
Diffuse	36 (24%)
Dorsal	14 (9.2%)
Lower lobes	29 (19%)
Mantle	1 (0.7%)
None	1 (0.7%)
Peripheral	54 (36%)
Right lung	1 (0.7%)
Additional COVID-19 findings	187
Halo sign	5 (2.7%)
None	36 (19%)
Perilobular pattern (OP signs)	9 (4.8%)
Pleural thickening	27 (14%)
Subpleural lines	49 (26%)
Subpleural sparing	19 (10%)

Vascular enlargement	42 (22%)
Contra-indicative findings	134
Atelectasis	10 (7.5%)
Discrete small nodules	3 (2.2%)
Isolated lobar/segmental consolidation	6 (4.5%)
Lymphadenopathy	29 (22%)
None	59 (44%)
Pericardial effusion	3 (2.2%)
Pleural effusion	12 (9.0%)
Smooth interlobular septal thickening	9 (6.7%)
Tree in bud	3 (2.2%)
Comorbidities	125
Ascites	1 (0.8%)
Aortic/coronaric calcifications	48 (38%)
Cardiomegaly	7 (5.6%)
Hepatic calcification	1 (0.8%)
None	47 (38%)
Oncologic Pt	2 (1.6%)
Pre-existing pulmonary disease	5 (4.0%)
Pulmonary hypertension	1 (0.8%)
Steatosis	11 (8.8%)
Tracheomalacia	2 (1.6%)
¹ n (%)	

Supplementary Table 2: Characteristics of 41 patients from Liège included in the study, including lab results at admission.

Characteristic	N	N = 41 [†]
Died	41	
N		36 (88%)
Y		5 (12%)
Age	41	70 (61, 75)
Sex	41	
F		15 (37%)
M		26 (63%)
Non-invasive ventilation	41	
N		38 (93%)
Y		3 (7.3%)
Continuous positive airway pressure	41	
N		41 (100%)
Tracheostomy	41	
N		41 (100%)
High flow nasal cannula oxygen therapy	41	
N		32 (78%)
Y		9 (22%)
Mechanical ventilation	3	
Y		3 (100%)
Hypertension	41	
N		9 (22%)
Y		32 (78%)

Malnutrition	41	
N		22 (54%)
Y		19 (46%)
Cardiovascular disease	41	
N		9 (22%)
Y		32 (78%)
Respiratory disease	41	
N		28 (68%)
Y		13 (32%)
Cancer	41	
N		36 (88%)
Y		5 (12%)
Chronic kidney disease	41	
N		32 (78%)
Y		9 (22%)
Chronic hepatitis	41	
N		18 (44%)
Y		23 (56%)
Cerebrovascular disease	41	
N		36 (88%)
Y		5 (12%)
Chronic hematologic disease	41	
N		40 (98%)
Y		1 (2.4%)
Diastolic blood pressure (mmHg)	41	77 (64, 82)

Heart rate (BPM)	41	96 (81, 99)
Systolic blood pressure (mmHg)	41	130 (122, 143)
Temperature (°C)	41	36.20 (36.00, 36.70)
Weight (kg)	27	75 (64, 87)
Height (cm)	23	170 (163, 176)
Alanine aminotransferase (U/L)	41	30 (21, 44)
Albumin (g/L)	41	38.0 (36.0, 40.0)
Aspartate aminotransferase (U/L)	41	44 (31, 73)
Bilirubin (mg/dL)	41	0.65 (0.52, 1.05)
Calcium (mmol/L)	41	2.16 (2.07, 2.24)
Creatine kinase mb (U/L)	41	105 (74, 146)
Creatinine (mg/dL)	41	1.02 (0.78, 1.17)
D-dimer (ug/L)	32	912 (499, 1,728)
Direct bilirubin (mg/dL)	41	0.29 (0.20, 0.43)
Fibrinogen (g/L)	41	574 (457, 702)
Hematocrit (%)	41	39.9 (36.4, 42.8)
Lactate dehydrogenase (U/L)	41	370 (278, 475)
Leukocytes (10³/mm³)	41	6.4 (4.6, 8.8)
Lymphocytes (10³/mm³)	41	0.83 (0.68, 1.01)
Neutrophils (10³/mm³)	41	4.74 (3.09, 7.22)
Oxygen saturation (%)	41	92.0 (91.0, 96.0)
Partial pressure oxygen (mmHg)	25	66 (57, 74)
Partial pressure carbon dioxide (mmHg)	25	31 (30, 37)
Platelets (10³/mm³)	41	171 (150, 242)
Potassium (mmol/L)	41	4.02 (3.64, 4.48)

Procalcitonin (ug/L)	36	0.14 (0.06, 0.38)
Prothrombin intl normalized ratio	41	1.06 (1.01, 1.15)
Prothrombin time (seconds)	41	12.40 (11.90, 13.50)
Sodium (mmol/L)	41	138 (136, 141)
Urea nitrogen (mg/dL)	41	45 (32, 54)
¹ n (%); Median (IQR)		

Supplementary Table 3: Significant differences observed between the 3 molecular phenotypes in the Liège cohort.

Characteristic	N	1, N = 11 ¹	2, N = 17 ¹	3, N = 13 ¹	p-value ²
Potassium (mmol/L)	41	3.64 (3.35, 3.90)	4.34 (4.13, 4.59)	3.80 (3.70, 4.33)	0.017

¹ n (%); Median (IQR)

² Fisher's exact test; Kruskal-Wallis rank sum test

Supplementary table 4: FDA approved drugs identified as modulators of pathway activity in each cluster identified in the UNIFI cohort.

Drug Name	Cluster 1	Cluster 2	Cluster 3
13-cis-retinoic acid	✓		
17 beta-estradiol	✓		
2-cda	✓		
4-hpr	✓		
5-fluorouracil	✓	✓	✓
5-fu	✓	✓	✓
Abciximab		✓	
Acalabrutinib	✓	✓	✓

Acalabrutinib maleate	✓	✓	✓
Acebutolol	✓	✓	✓
Acebutolol hydrochloride	✓	✓	✓
Acetaminophen	✓	✓	✓
Acetophenazine	✓	✓	✓
Acp-196	✓	✓	✓
Adalimumab	✓	✓	✓
Adenosine	✓	✓	✓
Adenosine monophosphate	✓	✓	✓
Adriamycin	✓		
Ajmalicine	✓	✓	✓
Albuterol		✓	
Albuterol sulfate		✓	
Alpelisib	✓		✓
Alpha-methyl-p-tyrosine	✓		
Alprazolam	✓	✓	✓
Alprostadil	✓	✓	✓
Alum	✓	✓	✓
Aluminum hydroxide	✓	✓	✓
Amg 416	✓	✓	✓
Amifostine	✓		
Amikacin	✓	✓	✓
Amineptine	✓	✓	✓
Aminophylline	✓	✓	✓
Amiodarone	✓	✓	✓

Amisulpride	✓	✓	✓
Amitriptyline	✓	✓	✓
Amitriptyline hydrochloride	✓	✓	✓
Amoxapine	✓	✓	✓
Amsacrine	✓	✓	✓
Anakinra	✓	✓	✓
Anastrozole			✓
Anifrolumab	✓		
Antihistamine	✓	✓	✓
Antithrombin		✓	✓
Antithymocyte globulin	✓	✓	✓
Apomorphine	✓	✓	✓
Aprotinin		✓	✓
Ara-c	✓	✓	✓
Arbutamine	✓	✓	✓
Arformoterol		✓	
Arformoterol tartrate		✓	
Asenapine	✓	✓	✓
Aspirin	✓	✓	✓
Atenolol	✓	✓	✓
Atezolizumab	✓		✓
Atomoxetine	✓	✓	✓
Atorvastatin	✓		✓
Atra	✓	✓	✓
Beclomethasone dipropionate	✓	✓	✓

Benzbromarone	✓	✓	✓
Berotralstat hydrochloride		✓	✓
Betamethasone	✓	✓	✓
Betaxolol	✓	✓	✓
Betaxolol hydrochloride	✓	✓	✓
Bethanidine	✓	✓	✓
Bevacizumab	✓	✓	✓
Bgb-3111	✓	✓	✓
Bgj398	✓		✓
Bicalutamide	✓	✓	✓
Bimatoprost	✓	✓	✓
Bimekizumab	✓	✓	✓
Bismuth subgallate		✓	✓
Bisoprolol	✓	✓	✓
Bisoprolol fumarate	✓	✓	✓
Bitolterol mesylate		✓	
Bms-986165	✓		
Bortezomib	✓	✓	✓
Bosutinib		✓	
Bretylium	✓	✓	✓
Brodalumab	✓	✓	✓
Bromocriptine	✓	✓	✓
Bunolol	✓	✓	✓
Buprenorphine		✓	
Bupropion	✓	✓	✓

Busulfan	✓	✓	✓
C1-inh		✓	✓
Cabozantinib	✓	✓	✓
Caffeine	✓		✓
Caffeine, citrated	✓	✓	✓
Calcitriol	✓		
Camptothecin	✓	✓	✓
Carboplatin	✓	✓	✓
Carphenazine	✓	✓	✓
Carteolol	✓	✓	✓
Carteolol hydrochloride	✓	✓	✓
Carvedilol	✓	✓	✓
Carvedilol phosphate	✓	✓	✓
Ceftriaxone	✓	✓	✓
Celiprolol	✓	✓	✓
Cetirizine	✓	✓	✓
Cetuximab	✓	✓	✓
Chlorpromazine	✓	✓	✓
Chlorprothixene	✓	✓	✓
Cidofovir	✓	✓	✓
Cilostazol	✓	✓	✓
Cinacalcet	✓	✓	✓
Cinacalcet hydrochloride	✓	✓	✓
Cinryze		✓	✓
Ciprofloxacin	✓	✓	✓

Cisapride	✓	✓	✓
Cisplatin	✓	✓	✓
Clarithromycin	✓	✓	✓
Clebopride	✓	✓	✓
Clenbuterol		✓	
Clenbuterol hydrochloride		✓	
Clobetasol propionate	✓	✓	✓
Clomipramine	✓	✓	✓
Clotrimazole	✓	✓	✓
Clozapine	✓	✓	✓
Cocaine	✓	✓	✓
Colchicine	✓	✓	✓
Cortisol	✓	✓	✓
Csa	✓	✓	✓
Cyclobenzaprine	✓	✓	✓
Cyclophosphamide	✓	✓	✓
Cyclosporin a	✓	✓	✓
Cyclosporine	✓	✓	✓
Cyproheptadine	✓	✓	✓
D4t	✓	✓	✓
Dacarbazine	✓	✓	✓
Danazol	✓	✓	✓
Dasatinib	✓	✓	✓
Deferoxamine	✓	✓	✓
Desipramine	✓	✓	✓

Desvenlafaxine	✓	✓	✓
Deucravacitinib	✓		
Dexfenfluramine hydrochloride	✓	✓	✓
Dextroamphetamine	✓	✓	✓
Dhea	✓	✓	✓
Diclofenac	✓		
Dicyclomine	✓	✓	✓
Dienestrol		✓	
Digoxin		✓	
Dihydroergocristine	✓	✓	✓
Dihydroergotamine	✓	✓	✓
Dilevalol hydrochloride	✓	✓	✓
Dinoprost tromethamine	✓	✓	✓
Dinoprostone	✓	✓	✓
Dipivefrin	✓	✓	✓
Dipivefrin hydrochloride	✓	✓	✓
Dipyridamole	✓	✓	✓
Disulfiram		✓	
Dobutamine	✓	✓	✓
Dobutamine hydrochloride	✓	✓	✓
Docetaxel	✓	✓	✓
Dopamine	✓	✓	✓
Dopamine hydrochloride	✓	✓	✓
Doxepin	✓	✓	✓
Doxorubicin	✓	✓	✓

Dronedarone	✓	✓	✓
Drotrecogin alfa	✓	✓	✓
Droxidopa	✓	✓	✓
Duloxetine	✓	✓	✓
E-3810	✓		✓
E-doxepin	✓	✓	✓
Ecallantide		✓	✓
Efalizumab	✓	✓	✓
Egcg	✓	✓	✓
Enalapril		✓	
Enoximone	✓	✓	✓
Entrectinib	✓	✓	✓
Ephedrine hydrochloride	✓	✓	✓
Ephedrine sulfate	✓	✓	✓
Epinastine	✓	✓	✓
Epinephrine	✓	✓	✓
Epinephrine bitartrate	✓	✓	✓
Epo	✓	✓	✓
Epoprostenol	✓	✓	✓
Epoprostenol sodium	✓	✓	✓
Eptifibatide		✓	
Erbitux	✓	✓	✓
Erdafitinib	✓		✓
Ergoloid mesylates	✓	✓	✓
Erlotinib	✓		✓

Erythromycin	✓	✓	✓
Esmolol	✓	✓	✓
Esmolol hydrochloride	✓	✓	✓
Estramustine	✓	✓	✓
Etanercept	✓	✓	✓
Etelcalcetide	✓	✓	✓
Ethanol	✓	✓	✓
Etoposide	✓	✓	✓
Exemestane			✓
Famciclovir	✓	✓	✓
Famotidine	✓		✓
Fenoldopam	✓	✓	✓
Fenoldopam mesylate	✓	✓	✓
Fenoterol		✓	
Fenretinide	✓	✓	✓
Fentanyl	✓	✓	✓
Finasteride	✓	✓	✓
Fk 506	✓	✓	✓
Flecainide	✓	✓	✓
Fludarabine	✓	✓	✓
Fluorouracil	✓	✓	✓
Fluoxetine	✓	✓	✓
Fluphenazine	✓	✓	✓
Fluticasone propionate	✓	✓	✓
Fluvoxamine	✓		✓

Folic acid	✓	✓	✓
Formoterol		✓	
Formoterol fumarate		✓	
Foscarnet	✓	✓	✓
Futibatinib	✓		✓
Gallium nitrate	✓		
Gemcitabine	✓	✓	✓
Genistein	✓	✓	✓
Glatiramer acetate	✓		
Glycopyrronium bromide		✓	
Gw642444		✓	
Haloperidol	✓	✓	✓
Hesperetin	✓		
Hexadecylphosphocholine	✓	✓	✓
Htf 919	✓	✓	✓
Human c1-esterase inhibitor		✓	✓
Human chorionic gonadotropin	✓	✓	✓
Hyaluronan	✓	✓	✓
Hydrogen peroxide	✓	✓	✓
Hydroquinone	✓	✓	✓
Hydroxyamphetamine hydrobromide	✓	✓	✓
Ibrutinib	✓	✓	✓
Ibuprofen	✓	✓	✓
Ici 182,780	✓		✓
Idarubicin	✓	✓	✓

Ifn alpha-2b	✓		
lloperidone	✓	✓	✓
Iloprost	✓	✓	✓
Imatinib	✓	✓	✓
Imipramine	✓	✓	✓
Imiquimod	✓		
Incb54828	✓		✓
Indacaterol	✓	✓	✓
Indacaterol maleate		✓	
Indinavir	✓	✓	✓
Indomethacin	✓	✓	✓
Infigratinib	✓		✓
Infigratinib phosphate	✓		✓
Infliximab	✓	✓	✓
Inositol	✓		
Insulin	✓	✓	✓
Interferon alfa-2a	✓		
Interferon alfa-2a, recombinant	✓		
Interferon alfa-2b	✓	✓	✓
Interferon alfa-2b, recombinant	✓		
Interferon alfa-n3	✓		
Interferon alfacon-1	✓		
Interferon alpha	✓		
Interferon alpha-2b	✓	✓	✓
Interferon beta	✓		

Interferon beta-1a	✓		
Interferon beta-1b	✓		
Interleukin-11		✓	
Irinotecan	✓		✓
Isoetharine	✓	✓	✓
Isoetharine hydrochloride		✓	
Isoetharine mesylate		✓	
Isoproterenol	✓	✓	✓
Isoproterenol hydrochloride	✓	✓	✓
Isoproterenol sulfate	✓	✓	✓
Isoxsuprine hydrochloride		✓	
Iudr	✓		
Kai-4169	✓	✓	✓
Ketotifen	✓	✓	✓
Kx2-391		✓	
Labetalol	✓	✓	✓
Labetalol hydrochloride	✓	✓	✓
Lactulose	✓	✓	✓
Lanadelumab		✓	✓
Lansoprazole	✓	✓	✓
Laropiprant	✓	✓	✓
Leflunomide	✓	✓	✓
Lenalidomide	✓		✓
Letrozole			✓
Leucovorin	✓	✓	✓

Levalbuterol		✓	
Levalbuterol hydrochloride		✓	
Levalbuterol tartrate		✓	
Levobetaxolol hydrochloride	✓	✓	✓
Levobunolol	✓	✓	✓
Levobunolol hydrochloride	✓	✓	✓
Levodopa	✓	✓	✓
Levosulpiride	✓	✓	✓
Lifitegrast	✓	✓	✓
Lithium	✓	✓	✓
Lovastatin		✓	
Loxapine	✓	✓	✓
Lurasidone	✓	✓	✓
Luspatercept	✓		
Maprotiline	✓	✓	✓
Masitinib	✓	✓	✓
Mechlorethamine	✓	✓	✓
Medroxyprogesterone	✓	✓	✓
Medroxyprogesterone acetate	✓	✓	✓
Melatonin	✓	✓	✓
Melevodopa	✓	✓	✓
Mephentermine sulfate	✓	✓	✓
Metaproterenol sulfate		✓	
Methacholine		✓	
Methamphetamine		✓	

Methimazole	✓	✓	✓
Methotrexate	✓	✓	✓
Methylene blue	✓	✓	✓
Methylergonovine	✓	✓	✓
Methylergonovine maleate	✓	✓	✓
Methylprednisolone	✓	✓	✓
Methysergide	✓	✓	✓
Metipranolol	✓	✓	✓
Metipranolol hydrochloride	✓	✓	✓
Metoclopramide hydrochloride	✓	✓	✓
Metoprolol	✓	✓	✓
Metoprolol fumarate	✓	✓	✓
Metoprolol succinate	✓	✓	✓
Metoprolol tartrate	✓	✓	✓
Midazolam	✓	✓	✓
Midostaurin	✓		✓
Mifepristone	✓	✓	✓
Minaprine	✓	✓	✓
Minaprine hydrochloride	✓	✓	✓
Misoprostol	✓	✓	✓
Mitoxantrone	✓	✓	✓
Mmf	✓	✓	✓
Molindone	✓	✓	✓
Morphine	✓	✓	✓
Mycophenolate mofetil	✓	✓	✓

N-acetyl-L-cysteine	✓	✓	✓
Nadolol	✓	✓	✓
Naltrexone	✓	✓	✓
Naproxen	✓	✓	✓
Navelbine	✓	✓	✓
Nebivolol	✓	✓	✓
Nebivolol hydrochloride	✓	✓	✓
Nelfinavir	✓	✓	✓
Niacin	✓	✓	✓
Nicardipine	✓	✓	✓
Niclosamide	✓	✓	✓
Nicotine	✓	✓	✓
Nintedanib	✓	✓	✓
Nintedanib esylate	✓		✓
Nitrogen mustard	✓	✓	✓
Nivolumab	✓		✓
Nordihydroguaiaretic acid	✓	✓	✓
Norepinephrine	✓	✓	✓
Norepinephrine bitartrate	✓	✓	✓
Nortriptyline	✓	✓	✓
Ns-304	✓	✓	✓
Olanzapine	✓	✓	✓
Olodaterol		✓	
Olodaterol hydrochloride		✓	
Omeprazole	✓	✓	✓

Omidenepag	✓	✓	✓
Omidenepag isopropyl	✓	✓	✓
Oncovex gm-csf	✓	✓	✓
Opc-34712	✓	✓	✓
Orciprenaline		✓	
Oxaliplatin	✓	✓	✓
Oxprenolol	✓	✓	✓
Oxprenolol hydrochloride	✓	✓	✓
Oxtriphylline	✓	✓	✓
Oxytocin	✓	✓	✓
P-1101	✓		
Paclitaxel	✓	✓	✓
Palifermin	✓		✓
Paliperidone	✓	✓	✓
Pamidronate	✓	✓	✓
Panobinostat	✓	✓	✓
Parathyroid hormone	✓	✓	✓
Paroxetine	✓	✓	✓
Pazopanib	✓	✓	✓
Pazopanib hydrochloride	✓		✓
Peginterferon alfa-2a	✓		
Peginterferon alfa-2b	✓		
Peginterferon beta-1a	✓		
Pemigatinib	✓		✓
Penbutolol	✓	✓	✓

Penbutolol sulfate	✓	✓	✓
Pentamidine isethionate		✓	✓
Pentosan polysulfate	✓		✓
Pentoxifylline	✓	✓	✓
Pergolide	✓	✓	✓
Pergolide mesylate	✓	✓	✓
Perphenazine	✓	✓	✓
Phenobarbital	✓	✓	✓
Phenylephrine	✓	✓	✓
Phenylephrine hydrochloride		✓	
Pimozide	✓	✓	✓
Pindolol	✓	✓	✓
Pioglitazone	✓		
Pirbuterol		✓	
Pirbuterol acetate		✓	
Pirenzepine	✓	✓	✓
Pirfenidone	✓		
Pirtobrutinib	✓	✓	✓
Plegridy	✓		
Ponatinib	✓	✓	✓
Practolol	✓	✓	✓
Pravastatin	✓	✓	✓
Prednisolone	✓	✓	✓
Prednisone	✓	✓	✓
Prilocaine hydrochloride		✓	

Procarbazine	✓	✓	✓
Prochlorperazine	✓	✓	✓
Promazine	✓	✓	✓
Promethazine	✓	✓	✓
Pronetalol	✓	✓	✓
Propafenone	✓	✓	✓
Propafenone hydrochloride	✓	✓	✓
Propiomazine	✓	✓	✓
Propranolol	✓	✓	✓
Propranolol hydrochloride	✓	✓	✓
Protokylol hydrochloride	✓	✓	✓
Protriptyline	✓	✓	✓
Prucalopride	✓	✓	✓
Prucalopride succinate	✓	✓	✓
Pseudoephedrine		✓	
Pyrogallol	✓	✓	✓
Quercetin	✓	✓	✓
Racepinephrine	✓	✓	✓
Racepinephrine hydrochloride		✓	
Ramipril	✓	✓	
Ranibizumab	✓	✓	✓
Rapamycin	✓	✓	✓
Recombinant gm-csf	✓	✓	✓
Recombinant interferon alfa-2b	✓		
Recombinant interferon beta-1a	✓	✓	✓

Regorafenib	✓		✓
Reproterol		✓	
Resveratrol	✓	✓	✓
Retinoic acid	✓	✓	✓
Retinol	✓	✓	✓
Rhil-11	✓	✓	✓
Rhucin		✓	✓
Ribavirin	✓	✓	✓
Rimiterol		✓	
Risperidone		✓	
Ritodrine		✓	
Ritodrine hydrochloride		✓	
Ritonavir	✓	✓	✓
Rituximab	✓		
Ropeginterferon alfa-2b	✓		
Rotigotine	✓	✓	✓
Salbutamol	✓	✓	✓
Saline	✓	✓	✓
Salmeterol	✓	✓	✓
Salmeterol xinafoate		✓	
Salt		✓	
Saquinavir	✓	✓	✓
Sar 1118.00	✓	✓	✓
Sargramostim	✓	✓	✓
Selexipag	✓	✓	✓

Selumetinib	✓	✓	✓
Sertindole	✓	✓	✓
Sertraline	✓	✓	✓
Sirolimus	✓		✓
SI-401	✓	✓	✓
Sodium salicylate	✓	✓	✓
Sorafenib	✓		✓
Sotalol	✓	✓	✓
Sotalol hydrochloride	✓	✓	✓
Spirolactone		✓	
Sti 571	✓		✓
Streptozocin	✓	✓	✓
Streptozotocin	✓	✓	✓
Stz	✓	✓	✓
Sucrafate	✓		✓
Sunitinib	✓	✓	✓
Sutimlimab		✓	✓
Tagraxofusp	✓	✓	✓
Talc	✓	✓	✓
Talimogene laherparepvec	✓	✓	✓
Tamoxifen	✓		
Tegaserod	✓	✓	✓
Tegaserod maleate	✓	✓	✓
Temozolomide	✓	✓	✓
Terbutaline		✓	

Terbutaline sulfate		✓	
Terfenadine	✓	✓	✓
Testosterone	✓		
Testosterone undecanoate	✓	✓	✓
Thalidomide	✓	✓	✓
Theophylline	✓	✓	✓
Theophylline sodium glycinate	✓	✓	✓
Thiethylperazine	✓	✓	✓
Thioridazine	✓	✓	✓
Thrombin	✓	✓	✓
Thyrotropin	✓		✓
Timolol	✓	✓	✓
Timolol maleate	✓	✓	✓
Tiotropium		✓	
Tirbanibulin		✓	
Tirofiban		✓	
Tirofiban hydrochloride		✓	
Tnt009		✓	✓
Tocopherol acetate	✓	✓	✓
Tofacitinib	✓		
Tofacitinib citrate	✓		
Toremifene	✓		
Tramadol		✓	
Trazodone	✓	✓	✓
Treprostinil	✓	✓	✓

Treprostinil diolamine	✓	✓	✓
Triacetin	✓	✓	✓
Triamcinolone	✓		✓
Trifluoperazine	✓	✓	✓
Triflupromazine	✓	✓	✓
Trimipramine	✓	✓	✓
Troglitazone	✓	✓	✓
Tropisetron	✓	✓	✓
Tulobuterol		✓	
Upadacitinib	✓		
Ustekinumab	✓	✓	✓
Vandetanib	✓	✓	✓
Vargatef	✓		✓
Velcalcetide	✓	✓	✓
Venlafaxine	✓	✓	✓
Verapamil	✓	✓	✓
Vidarabine	✓	✓	✓
Vilanterol		✓	
Vilanterol trifenate		✓	
Vinblastine	✓	✓	✓
Vincristine	✓		✓
Vinorelbine	✓	✓	✓
Vioxx	✓	✓	✓
Vitamin D	✓	✓	✓
Vitamin E	✓		

Vorinostat	✓	✓	✓
Vortioxetine	✓	✓	✓
Xamoterol	✓	✓	✓
Yohimbine	✓	✓	✓
Zanubrutinib	✓	✓	✓
Zimeldine hydrochloride	✓	✓	✓
Ziprasidone	✓	✓	✓
Zolmitriptan	✓	✓	✓
Zuclopenthixol	✓	✓	✓