

# Causal Relationship between Rheumatoid Arthritis and Atherosclerosis Risk: A Mendelian Randomized Study

Qi-Pei Liu<sup>#12</sup> Hong-Cheng Du<sup>#3</sup> Ping-Jin Xie<sup>4</sup> Lei-Xiao Zhang<sup>12</sup> Hao-Ze Gao<sup>12</sup> Jie-Hua Luo<sup>12</sup> Sheng-Ting Chai<sup>5\*</sup>

1 The Third School of Clinical Medicine, Guangzhou University of Chinese Medicine, Guangzhou, China

2 Graduate School of Guangzhou University of Chinese Medicine, Guangzhou, China

3 Graduate School of Guangxi University of Chinese Medicine, Nanning, China

4 Shenzhen Hospital of Shanghai University of Traditional Chinese Medicine, Shenzhen, China

5\* Address for correspondence Sheng-Ting Chai, MD, PhD, Department of Arthrosis, the Third Affiliated Hospital of Guangzhou University of Chinese Medicine, Guangzhou, 510378, China (e-mail:cst0192@qq.com).

ORCID

Qi-Pei Liu: 0009-0005-6495-6444

## Abstract:

**Objectives:** Previous observational studies have revealed an association between rheumatoid arthritis (RA) and atherosclerosis (AS). However, observational studies are prone to bias due to potential confounding factors and reverse causality. Therefore, this study investigates the causal relationship between RA and AS risk using Mendelian randomization (MR).

**Methods:** Genetic data related to RA and AS were sourced from the Integrative Epidemiology

Unit Open-Genome-Wide Association Studies database and the seventh edition of the FinnGen

**NOTE:** This preprint reports new research that has not been certified by peer review and should not be used to guide clinical practice.

Biobank gene database, respectively. The initial analysis employed the inverse variance weighted (IVW) method for the MR analysis, with other methods utilized as supplementary methods. To ensure the robustness and reliability of the conclusions, various sensitivity analyses were conducted.

Results: The MR results indicate a positive causal relationship between genetically determined RA and the risk of coronary atherosclerosis (OR = 1.026, 95% CI: 1.004, 1.049,  $p = 0.179$ ), peripheral atherosclerosis (OR = 1.072, 95% CI: 1.035, 1.111,  $p < 0.001$ ), and atherosclerosis excluding coronary atherosclerosis, cerebral atherosclerosis, and PAD (ASE) (OR = 1.046, 95% CI: 1.015, 1.079,  $p = 0.004$ ), while no significant causal relationship with cerebral AS was observed. The MR-Egger regression did not reveal any significant horizontal pleiotropy.

Conclusion: This study elucidates the causal relationship between RA and various AS risks, highlighting the importance of actively detecting and intervening in RA for AS risk.

**Keywords:** Mendelian randomization; rheumatoid arthritis; atherosclerosis; coronary atherosclerosis; cerebral atherosclerosis; peripheral atherosclerosis; causal relationship

## Introduction

Rheumatoid arthritis (RA) is an autoimmune disease characterized by persistent synovitis, cartilage, and bone degradation. Its main clinical manifestations include joint pain, swelling, stiffness, deformity, and sleep disturbances<sup>1,2</sup>. The prevalence of RA in most countries worldwide typically ranges from 0.25% to 3.4%<sup>3</sup>. The male-to-female ratio is 1:3, and the age of onset is primarily concentrated between 50 and 60 years<sup>4,5</sup>. From 1990 to 2019, the global age-standardized prevalence rate (ASPR) of RA significantly increased, and the ASPR in Europe and the Americas is generally greater than that in Africa and Asia<sup>6</sup>.

Atherosclerosis (AS) is a chronic inflammatory disease characterized by the deposition of lipids beneath the arterial intima. Mechanisms such as inflammatory responses, endothelial dysfunction, abnormal immune responses, and disrupted lipid metabolism can lead to the development of atherosclerosis or atheromatous plaques<sup>7</sup>. Under the influence of metalloproteinases, inflammatory cell infiltration, and other factors, the plaque is prone to rupture, thereby triggering acute cardiovascular diseases such as ischemic stroke and myocardial infarction<sup>8</sup>. Depending on the affected arterial location, AS can be classified into coronary atherosclerosis, peripheral artery atherosclerosis, cerebrovascular artery atherosclerosis, renal artery atherosclerosis, mesenteric artery atherosclerosis, pulmonary artery atherosclerosis, and so on.

Observational studies investigating the relationship between RA and AS have yielded conflicting conclusions and are susceptible to bias due to unknown confounding factors and reverse causality. Mendelian randomization (MR) is an epidemiological method for causal analysis that utilizes genetic variation as instrumental variables (IVs)<sup>9</sup>. Since environmental factors and the disease process do not influence genetic variations, MR can mitigate reverse causality and reduce the influence of confounding factors, thereby strengthening the relationship between exposure and outcome<sup>10</sup>. Although previous MR studies have provided evidence showing that genetically predicted RA increases the risk of coronary atherosclerosis<sup>11</sup>, there is a lack of research on other more widespread atherosclerotic conditions such as peripheral artery atherosclerosis, cerebral artery atherosclerosis, and so on. Furthermore, to our knowledge, there is currently no MR study investigating the causal impact of genetic susceptibility to RA on various forms of atherosclerosis. Therefore, in our study, univariable

Mendelian randomization (UVMR) analysis was implemented to explore the correlation between RA and various types of AS, including coronary AS, cerebral AS, peripheral AS, and atherosclerosis excluding coronary atherosclerosis, cerebral atherosclerosis, and PAD (peripheral arterial disease) (ASE), to further enrich and supplement the theoretical basis.

## **Methods and Materials**

### **Study design**

To investigate the relationship between RA and AS risk, we conducted UVMR analysis and reverse UVMR analysis using single nucleotide polymorphisms (SNPs) as IVs<sup>12</sup>. The flowchart of the study can be found in Supplementary Figure S1. Three crucial assumptions must be met to ensure the accuracy of the study<sup>13</sup>. First, the SNPs included in the study were significantly associated with RA. Second, the SNPs were independent of confounding factors related to both RA and AS. Third, all SNPs act on AS only through RA (Supplementary Figure S1).

### **Data sources**

The summary-level statistical data of genetic variations related to RA included in our study were obtained from the publicly available Integrative Epidemiology Unit (IEU) Open-Genome-Wide Association Studies (OpenGWAS) database<sup>14</sup>, which includes a total of 58,284 samples involving both males and females and 13,108,512 SNPs<sup>15</sup>(Supplementary Table S1). The summary statistical data for genetically determined coronary AS, cerebral AS, peripheral AS, and ASE are derived from the seventh edition of the FinnGen Biobank gene database<sup>16,17</sup> (Supplementary Table S1). To mitigate population stratification bias, all SNPs included in this study were derived from studies conducted on individuals of European ancestry.

All data included in the study are accessible from the publicly available IEU OpenGWAS database and the FinnGen Biobank genetic database. Therefore, ethical approval and informed consent were not required for this study.

## IVs selection

Firstly, we selected SNPs significantly associated with the entire genome of RA exposure (range of  $p < 5 \times 10^{-8}$ ). For reverse UVMR, a threshold of  $p < 1 \times 10^{-5}$  was set to include more SNPs related to AS. Secondly, to ensure data validity, we applied a linkage disequilibrium (LD) clustering process ( $r^2 < 0.001$ , clustering distance cutoff = 10,000 kb) to estimate the LD between the selected SNPs<sup>18</sup>. Finally, to test whether the selected genetic variations as IVs have a weak association with the exposure, the F-statistic was calculated. To avoid weak instrument bias, IVs with  $F < 10$  were excluded.

$$F = \frac{(N - 2) \times R^2}{1 - R^2}$$

$$R^2 = \frac{2 \times (1 - \text{EAF}) \times \text{EAF} \times \text{Beta}^2}{2 \times (1 - \text{EAF}) \times \text{EAF} \times \text{Beta}^2 + 2 \times (1 - \text{EAF}) \times \text{EAF} \times \text{SE}(\text{Beta})^2 \times N}$$

Beta represents the estimated genetic effect, EAF denotes the effect allele frequency, N indicates the sample size, and SE(Beta) denotes the standard error of the genetic effect<sup>19</sup>.

## Statistical analysis

All the data were analyzed using the TwoSampleMR package in RStudio (version 4.2.1)<sup>20</sup>.

## MR analysis

The inverse variance weighted (IVW) method is typically used as the most reliable MR analysis method to explore causal effects<sup>21</sup>. Since the IVW method assumes that all SNPs are valid instruments, weighted median (WM) and MR-Egger were also included as supplementary

methods for MR analysis to assess the reliability of the results. MR-Egger is susceptible to the influence of pleiotropic genetic variations, allowing for causal effect estimates of lower precision under weaker assumptions for the included genetic variations<sup>22</sup>. The WM method requires more than 50% effectiveness among the included IVs and estimates causal effects based on the weights of different genetic variations, making it more accurate than estimates based on the MR-Egger regression method<sup>23</sup>. The results based on the IVW method were statistically significant and consistent in direction with the results based on the WM method or MR-Egger regression, indicating significant causal effects in our study.

## **Sensitivity analysis**

First, the presence of significant horizontal pleiotropy in IVs and other potential confounding factors were assessed through MR-Egger regression<sup>24</sup>. Second, the IVW and MR-Egger regression were conducted to detect the presence of heterogeneity and quantify it using the Cochrane Q statistic<sup>25</sup>. A random-effects model was used for IVW when significant heterogeneity was present. Otherwise, a fixed-effects model was applied for IVW. Third, the symmetry of the funnel plot was analyzed to assess horizontal pleiotropy, indicating a lower likelihood of potential bias risk affecting the study conclusions when the plot is symmetrical<sup>26</sup>. Finally, leave-one-out analysis was conducted by systematically removing one IV at a time to assess whether the remaining IVs significantly affected the causal effect, thus evaluating whether any IV biased the conclusion.

## **Results**

### **Results of the Selection of IVs**

For detailed information about the SNPs used in the genetic IVs, as well as their

associations with RA, coronary AS, cerebral AS, peripheral AS, and ASE, please refer to Supplementary Data S1.

## **Effects of RA on AS risk**

Based on IVW, MR-Egger regression, and WM analyses, no significant causal relationship was found between genetic susceptibility to RA and cerebral AS risk (OR = 0.920, 95% CI: 0.800, 1.057,  $p = 0.237$ ) (Supplementary Figure S2). MR based on IVW estimates showed a strong correlation between genetically determined RA and coronary AS (OR = 1.026, 95% CI: 1.004, 1.049,  $p = 0.179$ ), peripheral AS (OR = 1.072, 95% CI: 1.035, 1.111,  $p < 0.001$ ) and ASE (OR = 1.046, 95% CI: 1.015, 1.079,  $p = 0.004$ ) (Supplementary Figure S2). MR-Egger regression and WM also showed similar trends (Supplementary Figure S2). Plotting the SNP effects of selected RA (X-axis) against the SNP effects of coronary AS, cerebral AS, peripheral AS, and ASE (Y-axis) indicated a significant positive causal effect of RA overall and coronary AS, peripheral AS, and ASE SNP effects (Supplementary Figure S3).

## **Results of the sensitivity analysis**

In the MR analysis involving genetically determined RA and coronary AS, peripheral AS, and ASE, significant heterogeneity was observed (Supplementary Table S2). All MR-Egger analyses of the risk of RA and AS in the forest plots did not intersect with zero (Supplementary Figure S4). MR-Egger regression was not statistically significant (Supplementary Table S2). Additionally, by examining the funnel plot (Supplementary Figure S5), it can be observed that the distribution of all included SNPs around the IVW estimated values is generally symmetrical. Furthermore, the "leave-one-out" analysis did not identify any IVs as outliers (Supplementary Figure S6). All SNPs included in our study had an F-statistic  $> 10$  (Supplementary Data S1).

## Results of reverse MR analysis

Based on the reverse UVMR analysis using the IVW method, MR-Egger regression, and WM method, no significant causal effect was detected between genetically determined coronary AS, cerebral AS, peripheral AS, ASE, and RA risk (Supplementary Table S3). MR-Egger regression did not reveal any significant horizontal pleiotropy (Supplementary Table S4). All SNPs included in the study were computed with an F-statistic  $> 10$  (Supplementary Data S1).

## Discussion

Through this study, it was found that the genetic susceptibility to rheumatoid arthritis is positively correlated with the risk of coronary AS, peripheral AS, and ASE, with no significant association observed with cerebral AS risk. Moreover, no significant genetic correlation was detected in the reverse MR study between coronary AS, cerebral AS, peripheral AS, ASE, and RA risk. Furthermore, the reliability and stability of the conclusions were validated through various sensitivity analyses.

Previous studies have shown that the onset of atherosclerosis precedes that of RA<sup>27</sup>, and there is an increasing belief that atherosclerosis is becoming a primary cause of rheumatoid arthritis<sup>28</sup>. In contrast, several cross-sectional studies have found that the incidence of coronary atherosclerosis, peripheral atherosclerosis, aortic valve sclerosis, and carotid atherosclerosis in RA patients is greater than that in the general population, sometimes even doubling<sup>29–32</sup>. Furthermore, a meta-analysis revealed that compared to the general population, RA patients exhibit greater carotid intima-media thickness (CIMT), along with a significantly increased incidence of carotid atherosclerosis (OR: 3.61; 95% CI: 2.65, 4.93;  $p < 0.0001$ )<sup>29</sup>. Our MR



analysis results support that RA increases susceptibility to various forms of AS, including coronary atherosclerosis, peripheral atherosclerosis, and ASE risk, but not cerebral atherosclerosis. Therefore, primary prevention of atherosclerosis in RA patients holds significant importance.

RA is an autoimmune disease that can lead to disability, and the mechanism by which it causes the onset of AS remains incompletely understood. Research has revealed that inflammatory cytokines such as IL-17, IL-1 $\beta$ , and TNF- $\alpha$  are widely present in RA patients<sup>33,34</sup>. These cytokines not only participate in synovial development but also promote the activation of endothelial cells, leading to dysfunction and accelerating the progression of atherosclerosis through the modulation of inflammatory cascades<sup>33,35</sup>. Moreover, RA chronic inflammation also has procoagulant and prooxidant effects, increasing the expression of tissue factor adhesion molecules, reducing the synthesis of nitric oxide and thrombomodulin, and inducing nicotinamide adenine dinucleotide phosphate oxidase-mediated mechanisms<sup>36,37</sup>. This further leads to endothelial dysfunction and shifts the hemostatic balance of RA toward a prothrombotic state. In addition, in RA patients, abnormal activation of T and B cells occurs, and CD4<sup>+</sup> and Th17 cells can lead to abnormal secretion of inflammatory factors such as IL-17 and IL-6, triggering abnormal inflammatory responses and causing endothelial cell damage and dyslipidemia, ultimately leading to atherosclerosis<sup>38,39</sup>. The shared epitope allele combinations *HLA-DRB1\*04\*04* and *HLA-DRB1\*01\*04* have been demonstrated to not only be risk factors for promoting RA but also to be associated with endothelial dysfunction and carotid atherosclerosis<sup>40,41</sup>. Furthermore, studies have proposed the "lipid paradox" in RA patients, wherein serum levels of high-density lipoprotein (HDL), low-density lipoprotein

(LDL), and total cholesterol decrease due to excessive degradation<sup>37,42</sup>. Additionally, a proinflammatory form of HDL, known as piHDL, is produced, which promotes foam cell formation and LDL oxidation, thus accelerating the progression of atherosclerotic plaque enlargement<sup>43,44</sup>. In summary, RA may trigger and exacerbate AS from various aspects, including inflammation, lipid disorders, endothelial dysfunction, immune dysfunction, and genetic factors.

Endothelial function and CIMT are recognized surrogate markers for early atherosclerosis<sup>45</sup>, and there is evidence suggesting that assessing skin vascular function can serve as a noninvasive, useful surrogate marker for evaluating vascular risk in RA<sup>46</sup>. RA medications such as the disease-modifying antirheumatic drugs (DMARDs) methotrexate (MTX)<sup>47,48</sup> and the TNF- $\alpha$  inhibitors infliximab (IFX)<sup>49-52</sup>, adalimumab<sup>52</sup>, and rituximab<sup>53</sup> have been clinically proven to reduce proinflammatory mediators such as IL-6 in RA patients and to consistently improve endothelial function, exerting beneficial effects on the development of AS in RA patients and thereby delaying the onset and mortality of cardiovascular disease. Moreover, the angiotensin-converting enzyme inhibitor ramipril can significantly improve endothelial function in patients with RA, offering a potential new strategy for preventing cardiovascular events in RA patients<sup>54</sup>. Moreover, clinical studies have demonstrated that long-term lipid-lowering therapy with statin drugs (such as rosuvastatin and atorvastatin) can improve endothelial function in RA patients by alleviating arterial stiffness and reducing carotid plaque height, thereby reducing the risk of cardiovascular events (CVEs)<sup>55,56</sup>.

This study has several strengths. Firstly, our research employs population restrictions on individuals of European descent to reduce population structure bias. Secondly, this MR study

comprehensively covered various types of atherosclerotic diseases and strictly adhered to the STROBE-MR guidelines. To ensure the robustness and reliability of the conclusions, both IVW and two supplementary methods (WM and MR-Egger) were employed for MR analysis, along with various sensitivity analyses to mitigate potential confounding biases as much as possible. Although some heterogeneity was observed in the analysis of RA with AS from the IEU OpenGWAS database and the FinnGen dataset, the random-effects model could correct the heterogeneity. Furthermore, the MR-Egger regression analysis did not detect any significant horizontal pleiotropy, suggesting that the observed heterogeneity is unlikely to introduce bias to the MR analysis.

When analyzing our study results, certain limitations need to be considered. Firstly, all populations included in the MR study were of European descent, so the generalizability of the study conclusions to all ethnicities awaits future research. Secondly, potential unidentified confounding or mediating factors between exposure and outcome variables may introduce unpredictable biases to our study results. Third, the study faces a limitation as it cannot perform a stratified analysis based on essential variables such as sex. Lastly, due to the characteristics of Mendelian randomization studies, the assessment of potential nonlinear associations between RA and AS diseases is limited.

## **Conclusion**

In summary, this MR study revealed a positive correlation between genetic predispositions to RA and coronary AS, peripheral AS, and ASE, with no significant causal relationship observed with cerebral AS. This information can aid clinicians in identifying RA patients at greater risk of AS diseases, facilitating early diagnosis and comprehensive treatment.

Additionally, in future clinical treatments, the use of drugs with potential benefits for targeted RA therapy, such as anti-TNF- $\alpha$  agents(e.g., etanercept, adalimumab, infliximab), which have proven potential benefits in AS treatment.

### **Acknowledgments**

We sincerely thank the participants and researchers from the FinnGen study and the UK Biobank, as well as James J. Lee et al. This work is based on the generous sharing of data from the IEU OpenGWAS database, the FinnGen Biobank genetic database, and contributions from James J. Lee and colleagues.

### **Author contribution**

Guiding the research process: ST C. Conceptualization and methodology, Study design, Statistical analysis, and Data collection: QP L and HC D. QP L and HC D these authors contributed equally to this work and shared first authorship. Writing (original draft & review & editing) and Approval of final manuscript: all authors.

### **Funding statement**

Supported by Project of Administration of Traditional Chinese Medicine of Guangdong Province of China (No.20241258) ; Supported by Sanming Project of Medicine in Shenzhen (No. SZZYSM 202101005) ; Supported by Luohu District Soft Science Research Program Project (NO.LX202202133) .

### **Conflict of interest statement**

All authors declare that there are no conflicts of interest to report.

### **Data availability statement**

All data included in this study can be obtained from the publicly available IEU

OpenGWAS database and FinnGen Biobank gene database.

## References

1. Aletaha D, Smolen JS. Diagnosis and Management of Rheumatoid Arthritis: A Review. *JAMA*. 2018;320(13):1360-1372. doi:10.1001/jama.2018.13103
2. Baghdadi LR, Woodman RJ, Shanahan EM, Mangoni AA. The impact of traditional cardiovascular risk factors on cardiovascular outcomes in patients with rheumatoid arthritis: a systematic review and meta-analysis. *PloS One*. 2015;10(2):e0117952. doi:10.1371/journal.pone.0117952
3. Atta A, Salem MM, El-Said KS, Mohamed TM. Mechanistic role of quercetin as inhibitor for adenosine deaminase enzyme in rheumatoid arthritis: systematic review. *Cell Mol Biol Lett*. 2024;29:14. doi:10.1186/s11658-024-00531-7
4. Maranini B, Bortoluzzi A, Silvagni E, Govoni M. Focus on Sex and Gender: What We Need to Know in the Management of Rheumatoid Arthritis. *J Pers Med*. 2022;12(3):499. doi:10.3390/jpm12030499
5. Finckh A, Gilbert B, Hodkinson B, et al. Global epidemiology of rheumatoid arthritis. *Nat Rev Rheumatol*. 2022;18(10):591-602. doi:10.1038/s41584-022-00827-y
6. Cao F, Liu YC, Ni QY, et al. Temporal trends in the prevalence of autoimmune diseases from 1990 to 2019. *Autoimmun Rev*. 2023;22(8):103359. doi:10.1016/j.autrev.2023.103359
7. Gerganov G, Georgiev T, Dimova M, Shivacheva T. Vascular effects of biologic and targeted synthetic antirheumatic drugs approved for rheumatoid arthritis: a systematic review. *Clin Rheumatol*. 2023;42(10):2651-2676. doi:10.1007/s10067-023-06587-8
8. Meng H, Ruan J, Yan Z, et al. New Progress in Early Diagnosis of Atherosclerosis. *Int J Mol Sci*. 2022;23(16):8939. doi:10.3390/ijms23168939
9. Bowden J, Holmes MV. Meta-analysis and Mendelian randomization: A review. *Res Synth Methods*. 2019;10(4):486-496. doi:10.1002/jrsm.1346
10. Zhang W, Wu P, Yin R, et al. Mendelian Randomization Analysis Suggests No Associations of Herpes Simplex Virus Infections With Multiple Sclerosis. *Front Neurosci*. 2022;16:817067. doi:10.3389/fnins.2022.817067
11. Nie Q, Luo Q, Yan W, Zhang T, Wang H, Wu J. Rheumatoid arthritis and coronary atherosclerosis: a two-sample Mendelian randomization study. *Front Cardiovasc Med*. 2023;10:1033644. doi:10.3389/fcvm.2023.1033644
12. Lawlor DA, Harbord RM, Sterne JAC, Timpson N, Davey Smith G. Mendelian randomization: using genes as instruments for making causal inferences in epidemiology. *Stat Med*. 2008;27(8):1133-1163. doi:10.1002/sim.3034
13. Davies NM, Holmes MV, Davey Smith G. Reading Mendelian randomisation studies: a guide, glossary, and checklist for clinicians. *BMJ*. 2018;362:k601. doi:10.1136/bmj.k601
14. IEU OpenGWAS project. Accessed February 23, 2024. <https://gwas.mrcieu.ac.uk/>
15. Ha E, Bae SC, Kim K. Large-scale meta-analysis across East Asian and European populations updated genetic architecture and variant-driven biology of rheumatoid arthritis, identifying 11 novel susceptibility loci. *Ann Rheum Dis*. 2021;80(5):558-565. doi:10.1136/annrheumdis-2020-219065
16. FinnGen: an expedition into genomics and medicine. FinnGen. Accessed February 23,

2024.

[https://www.finngen.fi/en/finngen\\_research\\_project\\_is\\_an\\_expedition\\_to\\_the\\_frontier\\_of\\_genomics\\_and\\_medicine](https://www.finngen.fi/en/finngen_research_project_is_an_expedition_to_the_frontier_of_genomics_and_medicine)

17. Kurki MI, Karjalainen J, Palta P, et al. FinnGen provides genetic insights from a well-phenotyped isolated population. *Nature*. 2023;613(7944):508-518. doi:10.1038/s41586-022-05473-8
18. Pritchard JK, Przeworski M. Linkage disequilibrium in humans: models and data. *Am J Hum Genet*. 2001;69(1):1-14. doi:10.1086/321275
19. Palmer TM, Lawlor DA, Harbord RM, et al. Using multiple genetic variants as instrumental variables for modifiable risk factors. *Stat Methods Med Res*. 2012;21(3):223-242. doi:10.1177/0962280210394459
20. Hemani G, Zheng J, Elsworth B, et al. The MR-Base platform supports systematic causal inference across the human phenome. *eLife*. 2018;7:e34408. doi:10.7554/eLife.34408
21. Burgess S, Butterworth A, Thompson SG. Mendelian randomization analysis with multiple genetic variants using summarized data. *Genet Epidemiol*. 2013;37(7):658-665. doi:10.1002/gepi.21758
22. Yavorska OO, Burgess S. MendelianRandomization: an R package for performing Mendelian randomization analyses using summarized data. *Int J Epidemiol*. 2017;46(6):1734-1739. doi:10.1093/ije/dyx034
23. Bowden J, Davey Smith G, Haycock PC, Burgess S. Consistent Estimation in Mendelian Randomization with Some Invalid Instruments Using a Weighted Median Estimator. *Genet Epidemiol*. 2016;40(4):304-314. doi:10.1002/gepi.21965
24. Burgess S, Thompson SG. Interpreting findings from Mendelian randomization using the MR-Egger method. *Eur J Epidemiol*. 2017;32(5):377-389. doi:10.1007/s10654-017-0255-x
25. Niu PP, Song B, Wang X, Xu YM. Serum Uric Acid Level and Multiple Sclerosis: A Mendelian Randomization Study. *Front Genet*. 2020;11:254. doi:10.3389/fgene.2020.00254
26. Yin KJ, Huang JX, Wang P, et al. No Genetic Causal Association Between Periodontitis and Arthritis: A Bidirectional Two-Sample Mendelian Randomization Analysis. *Front Immunol*. 2022;13:808832. doi:10.3389/fimmu.2022.808832
27. Fazeli MS, Khaychuk V, Wittstock K, et al. Cardiovascular Disease in Rheumatoid Arthritis: Risk Factors, Autoantibodies, and the Effect of Antirheumatic Therapies. *Clin Med Insights Arthritis Musculoskelet Disord*. 2021;14:11795441211028751. doi:10.1177/11795441211028751
28. Wang L, Luqmani R, Udalova IA. The role of neutrophils in rheumatic disease-associated vascular inflammation. *Nat Rev Rheumatol*. 2022;18(3):158-170. doi:10.1038/s41584-021-00738-4
29. Ambrosino P, Lupoli R, Di Minno A, Tasso M, Peluso R, Di Minno MND. Subclinical atherosclerosis in patients with rheumatoid arthritis. A meta-analysis of literature studies. *Thromb Haemost*. 2015;113(5):916-930. doi:10.1160/TH14-11-0921
30. Jonsson SW, Backman C, Johnson O, et al. Increased prevalence of atherosclerosis in patients with medium term rheumatoid arthritis. *J Rheumatol*. 2001;28(12):2597-2602.
31. Galarza-Delgado DA, Azpiri-Lopez JR, Guajardo-Jauregui N, et al. Carotid atherosclerosis in the first five years since rheumatoid arthritis diagnosis: a cross sectional study. *Adv Rheumatol Lond Engl*. 2023;63(1):36. doi:10.1186/s42358-023-00319-x

32. Karpouzas GA, Malpeso J, Choi TY, Li D, Munoz S, Budoff MJ. Prevalence, extent and composition of coronary plaque in patients with rheumatoid arthritis without symptoms or prior diagnosis of coronary artery disease. *Ann Rheum Dis.* 2014;73(10):1797-1804. doi:10.1136/annrheumdis-2013-203617
33. Figus FA, Piga M, Azzolin I, McConnell R, Iagnocco A. Rheumatoid arthritis: Extra-articular manifestations and comorbidities. *Autoimmun Rev.* 2021;20(4):102776. doi:10.1016/j.autrev.2021.102776
34. Interleukin-6 Receptor Mendelian Randomisation Analysis (IL6R MR) Consortium, Swerdlow DI, Holmes MV, et al. The interleukin-6 receptor as a target for prevention of coronary heart disease: a mendelian randomisation analysis. *Lancet Lond Engl.* 2012;379(9822):1214-1224. doi:10.1016/S0140-6736(12)60110-X
35. Libby P. Inflammatory mechanisms: the molecular basis of inflammation and disease. *Nutr Rev.* 2007;65(12 Pt 2):S140-146. doi:10.1111/j.1753-4887.2007.tb00352.x
36. Bedeković D, Bošnjak I, Šarić S, Kirner D, Novak S. Role of Inflammatory Cytokines in Rheumatoid Arthritis and Development of Atherosclerosis: A Review. *Med Kaunas Lith.* 2023;59(9):1550. doi:10.3390/medicina59091550
37. DeMizio DJ, Geraldino-Pardilla LB. Autoimmunity and Inflammation Link to Cardiovascular Disease Risk in Rheumatoid Arthritis. *Rheumatol Ther.* 2020;7(1):19-33. doi:10.1007/s40744-019-00189-0
38. Popescu D, Rezus E, Badescu MC, et al. Cardiovascular Risk Assessment in Rheumatoid Arthritis: Accelerated Atherosclerosis, New Biomarkers, and the Effects of Biological Therapy. *Life Basel Switz.* 2023;13(2):319. doi:10.3390/life13020319
39. Pattarabanjird T, Li C, McNamara C. B Cells in Atherosclerosis: Mechanisms and Potential Clinical Applications. *JACC Basic Transl Sci.* 2021;6(6):546-563. doi:10.1016/j.jacbts.2021.01.006
40. Gonzalez-Gay MA, Gonzalez-Juanatey C, Lopez-Diaz MJ, et al. HLA-DRB1 and persistent chronic inflammation contribute to cardiovascular events and cardiovascular mortality in patients with rheumatoid arthritis. *Arthritis Rheum.* 2007;57(1):125-132. doi:10.1002/art.22482
41. Carbone F, Bonaventura A, Liberale L, et al. Atherosclerosis in Rheumatoid Arthritis: Promoters and Opponents. *Clin Rev Allergy Immunol.* 2020;58(1):1-14. doi:10.1007/s12016-018-8714-z
42. Rezuş E, Macovei LA, Burlui AM, Cardoneanu A, Rezuş C. Ischemic Heart Disease and Rheumatoid Arthritis-Two Conditions, the Same Background. *Life Basel Switz.* 2021;11(10):1042. doi:10.3390/life11101042
43. Feingold KR, Grunfeld C. The Effect of Inflammation and Infection on Lipids and Lipoproteins. In: Feingold KR, Anawalt B, Blackman MR, et al., eds. *Endotext*. MDText.com, Inc.; 2000. Accessed February 1, 2024. <http://www.ncbi.nlm.nih.gov/books/NBK326741/>
44. McMahon M, Grossman J, FitzGerald J, et al. Proinflammatory high-density lipoprotein as a biomarker for atherosclerosis in patients with systemic lupus erythematosus and rheumatoid arthritis. *Arthritis Rheum.* 2006;54(8):2541-2549. doi:10.1002/art.21976
45. Sidiropoulos PI, Siakka P, Pagonidis K, et al. Sustained improvement of vascular endothelial function during anti-TNFalpha treatment in rheumatoid arthritis patients. *Scand J Rheumatol.* 2009;38(1):6-10. doi:10.1080/03009740802363768

46. Datta D, Ferrell WR, Sturrock RD, Jadhav ST, Sattar N. Inflammatory suppression rapidly attenuates microvascular dysfunction in rheumatoid arthritis. *Atherosclerosis*. 2007;192(2):391-395. doi:10.1016/j.atherosclerosis.2006.05.034
47. Kim HJ, Kim MJ, Lee CK, Hong YH. Effects of Methotrexate on Carotid Intima-media Thickness in Patients with Rheumatoid Arthritis. *J Korean Med Sci*. 2015;30(11):1589-1596. doi:10.3346/jkms.2015.30.11.1589
48. Tam LS, Shang Q, Li EK, et al. Infliximab is associated with improvement in arterial stiffness in patients with early rheumatoid arthritis -- a randomized trial. *J Rheumatol*. 2012;39(12):2267-2275. doi:10.3899/jrheum.120541
49. Cardillo C, Schinzari F, Mores N, et al. Intravascular tumor necrosis factor alpha blockade reverses endothelial dysfunction in rheumatoid arthritis. *Clin Pharmacol Ther*. 2006;80(3):275-281. doi:10.1016/j.clpt.2006.05.011
50. Nishida K, Okada Y, Nawata M, Saito K, Tanaka Y. Induction of hyperadiponectinemia following long-term treatment of patients with rheumatoid arthritis with infliximab (IFX), an anti-TNF-alpha antibody. *Endocr J*. 2008;55(1):213-216. doi:10.1507/endocrj.k07e-043
51. Gonzalez-Juanatey C, Testa A, Garcia-Castelo A, Garcia-Porrua C, Llorca J, Gonzalez-Gay MA. Active but transient improvement of endothelial function in rheumatoid arthritis patients undergoing long-term treatment with anti-tumor necrosis factor alpha antibody. *Arthritis Rheum*. 2004;51(3):447-450. doi:10.1002/art.20407
52. Gonzalez-Juanatey C, Vazquez-Rodriguez TR, Miranda-Fillooy JA, et al. Anti-TNF-alpha-adalimumab therapy is associated with persistent improvement of endothelial function without progression of carotid intima-media wall thickness in patients with rheumatoid arthritis refractory to conventional therapy. *Mediators Inflamm*. 2012;2012:674265. doi:10.1155/2012/674265
53. Kerekes G, Soltész P, Dér H, et al. Effects of rituximab treatment on endothelial dysfunction, carotid atherosclerosis, and lipid profile in rheumatoid arthritis. *Clin Rheumatol*. 2009;28(6):705-710. doi:10.1007/s10067-009-1095-1
54. Flammer AJ, Sudano I, Hermann F, et al. Angiotensin-converting enzyme inhibition improves vascular function in rheumatoid arthritis. *Circulation*. 2008;117(17):2262-2269. doi:10.1161/CIRCULATIONAHA.107.734384
55. Ikdahl E, Hisdal J, Rollefstad S, et al. Rosuvastatin improves endothelial function in patients with inflammatory joint diseases, longitudinal associations with atherosclerosis and arteriosclerosis: results from the RORA-AS statin intervention study. *Arthritis Res Ther*. 2015;17:279. doi:10.1186/s13075-015-0795-y
56. Kitas GD, Nightingale P, Armitage J, et al. A Multicenter, Randomized, Placebo-Controlled Trial of Atorvastatin for the Primary Prevention of Cardiovascular Events in Patients With Rheumatoid Arthritis. *Arthritis Rheumatol Hoboken NJ*. 2019;71(9):1437-1449. doi:10.1002/art.40892



# Supplementary materials for Causal Relationship between Rheumatoid Arthritis and Atherosclerosis Risk: A Mendelian Randomized Study

Qi-Pei Liu<sup>#12</sup> Hong-Cheng Du<sup>#3</sup> Ping-Jin Xie<sup>4</sup> Lei-Xiao Zhang<sup>12</sup> Hao-Ze Gao<sup>12</sup>

Jie-Hua Luo<sup>12</sup> Sheng-Ting Chai<sup>5</sup>

medRxiv preprint doi: <https://doi.org/10.1101/2024.04.14.24305792>; this version posted April 15, 2024. The copyright holder for this preprint (which was not certified by peer review) is the author/funder, who has granted medRxiv a license to display the preprint in perpetuity. It is made available under a [CC-BY 4.0 International license](https://creativecommons.org/licenses/by/4.0/).

1 The Third School of Clinical Medicine, Guangzhou University of Chinese

Medicine, Guangzhou, China

2 Graduate School of Guangzhou University of Chinese Medicine, Guangzhou, China

3 Graduate School of Guangxi University of Chinese Medicine, Nanning, China

4 Shenzhen Hospital of Shanghai University of Traditional Chinese Medicine, Shenzhen, China

5 Address for correspondence Sheng-Ting Chai, MD, PhD, Department of Arthrosis, the Third Affiliated Hospital of Guangzhou University of Chinese Medicine, Guangzhou, 510378, China (e-mail: [cst0192@qq.com](mailto:cst0192@qq.com)).

ORCID

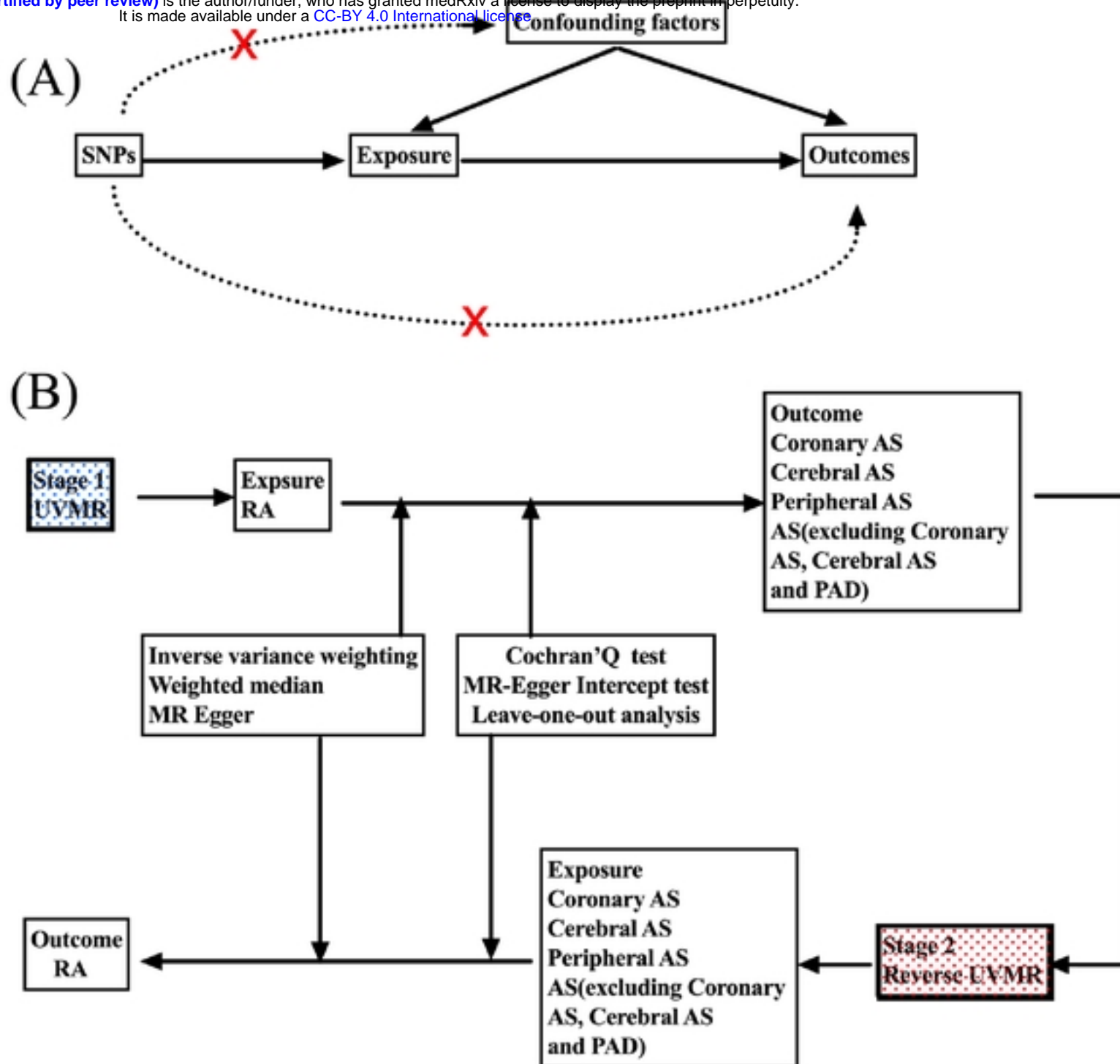
Qi-Pei Liu: 0009-0005-6495-6444

## Contents

1. Supplementary Figure S1. A working flow chart to explore the potential relationship between RA and AS risk.
2. Supplementary Figure S2. MR analysis of forest maps showing the effect of genetically determined RA on AS risk.
3. Supplementary Figure S3. Scatterplot summary of genetically determined causality between RA and AS under different MR methods.
4. Supplementary Figure S4. Summary of forest maps of the effects of SNPs associated with RA on AS risk.

5. Supplementary Figure S5. Funnel plot analysis of SNPs associated with RA and AS risk.
6. Supplementary Figure S6. Residual sensitivity analysis of SNPs associated with RA and AS risk.
7. Supplementary Table S1. Description of data used for the five phenotypes.
8. Supplementary Table S2. Testing of heterogeneity and pleiotropy of the RA-associated IVs from AS. Supplementary Table S3. The results of reverse UVMR analysis are based on IVW, MR-Egger regression and WM methods.
9. Supplementary Table S3. The results of reverse UVMR analysis are based on IVW, MR-Egger regression and WM methods.
10. Supplementary Table S4. Testing of heterogeneity and pleiotropy of the AS-associated IVs from RA.

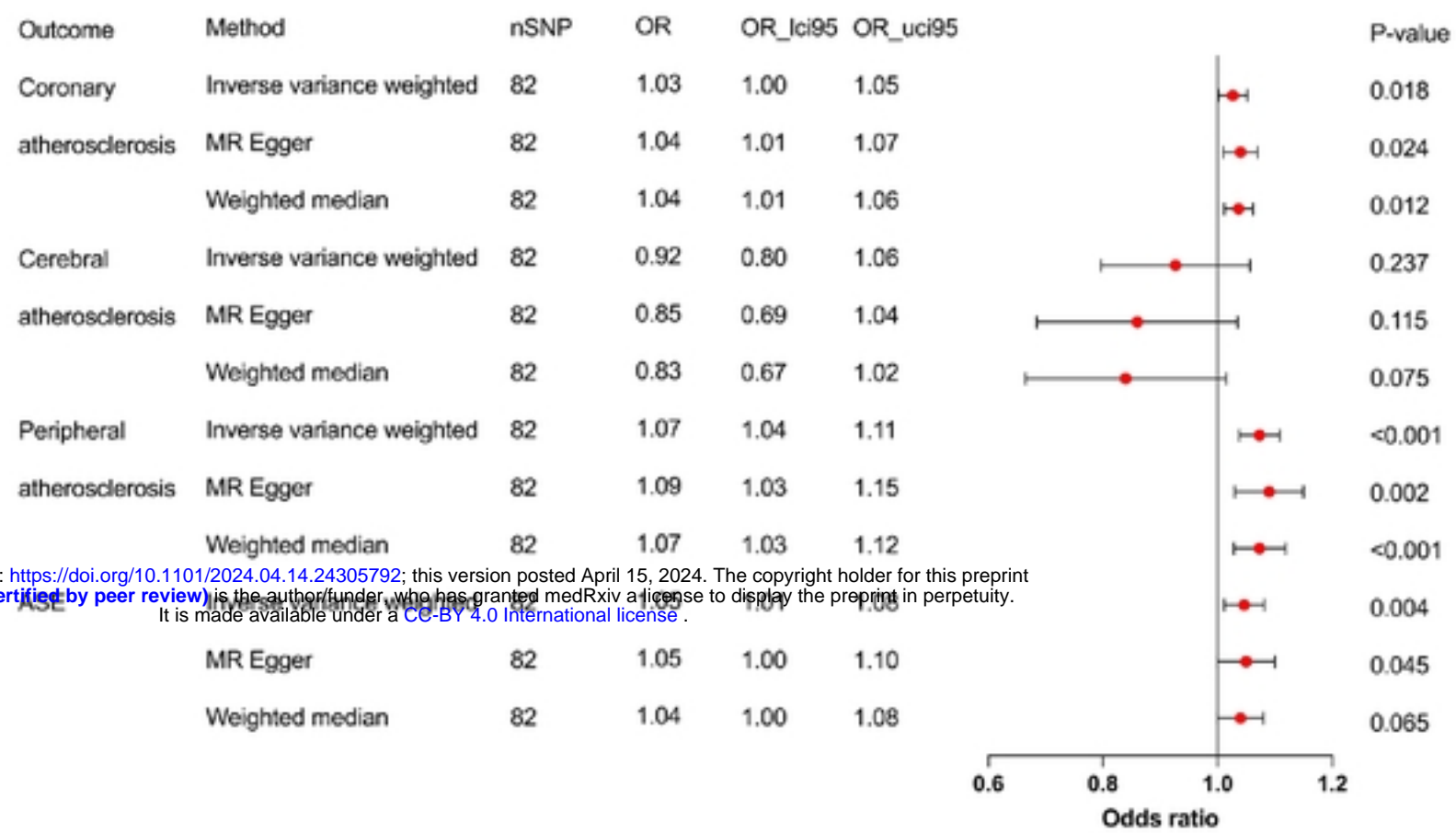
medRxiv preprint doi: <https://doi.org/10.1101/2024.04.14.24305792>; this version posted April 15, 2024. The copyright holder for this preprint (which was not certified by peer review) is the author/funder, who has granted medRxiv a license to display the preprint in perpetuity. It is made available under a [CC-BY 4.0 International license](https://creativecommons.org/licenses/by/4.0/).



Supplementary Figure S1. A working flow chart to explore the potential relationship between RA and AS risk.

(A) The basic idea of MR Analysis ; (B) the workflow of two-way UVMR Analysis. MR, Mendelian randomization; UVMR, Univariate Mendelian randomization; AS, atherosclerosis; RA, rheumatoid arthritis. SNPs, single nucleotide polymorphisms; PAD, peripheral arterial disease.

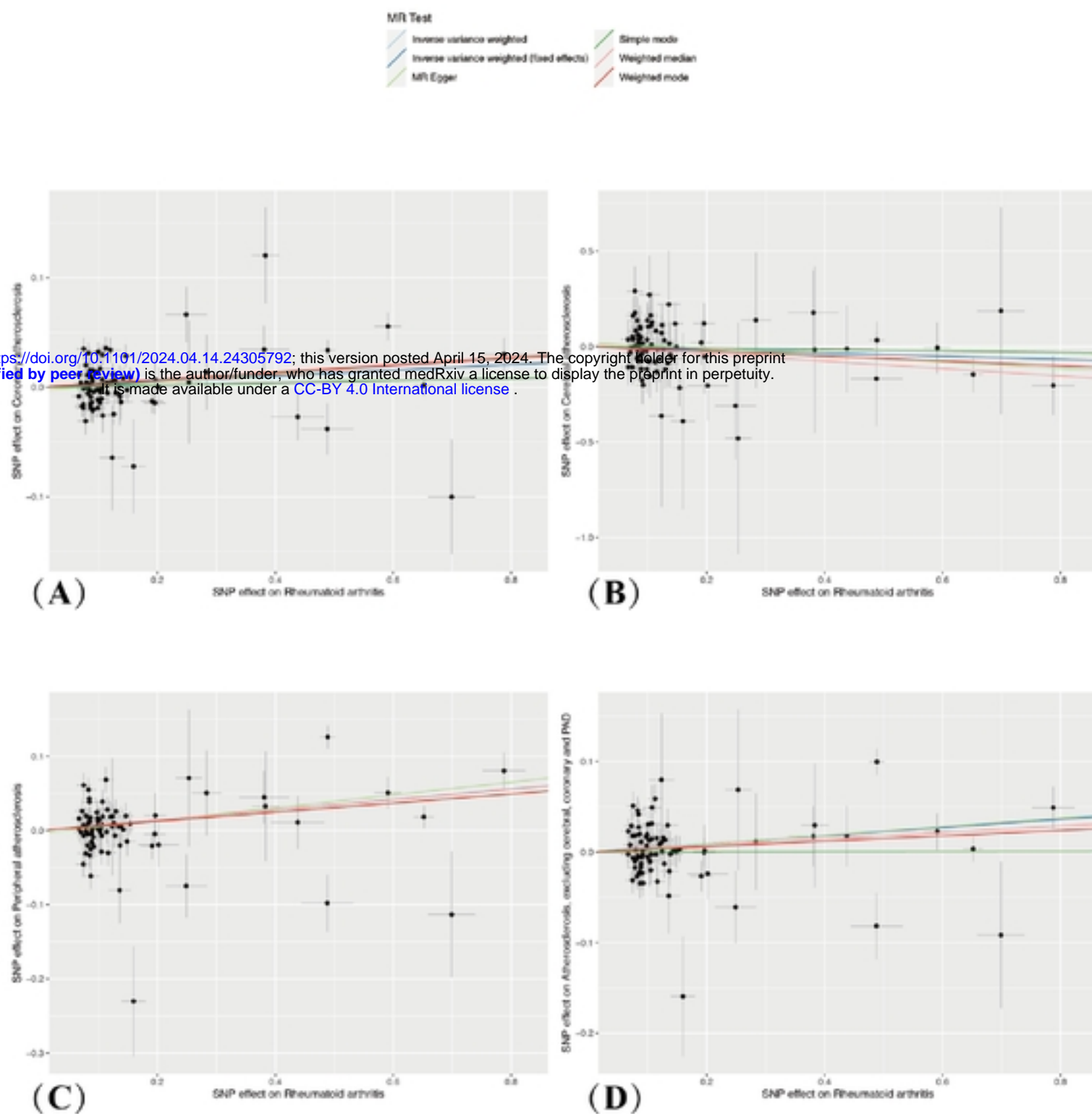
medRxiv preprint doi: <https://doi.org/10.1101/2024.04.14.24305792>; this version posted April 15, 2024. The copyright holder for this preprint (which was not certified by peer review) is the author/funder, who has granted medRxiv a license to display the preprint in perpetuity. It is made available under a [CC-BY 4.0 International license](https://creativecommons.org/licenses/by/4.0/).



**Supplementary Figure S2. MR analysis of forest maps showing the effect of genetically determined RA on AS risk.**

**nSNP**, number of single nucleotide polymorphisms; **OR**, odds ratio; **OR\_lci95**, The lower limit of the 95% confidence interval for the odds ratio; **OR\_uci95**, The upper limit of the 95% confidence interval for the odds ratio; **RA**, rheumatoid arthritis; **AS**, atherosclerosis; **ASE**, atherosclerosis excluding coronary atherosclerosis, cerebral atherosclerosis, and PAD (peripheral arterial disease); **MR**, Mendelian randomization.

medRxiv preprint doi: <https://doi.org/10.1101/2024.04.14.24305792>; this version posted April 15, 2024. The copyright holder for this preprint (which was not certified by peer review) is the author/funder, who has granted medRxiv a license to display the preprint in perpetuity. It is made available under a [CC-BY 4.0 International license](https://creativecommons.org/licenses/by/4.0/).

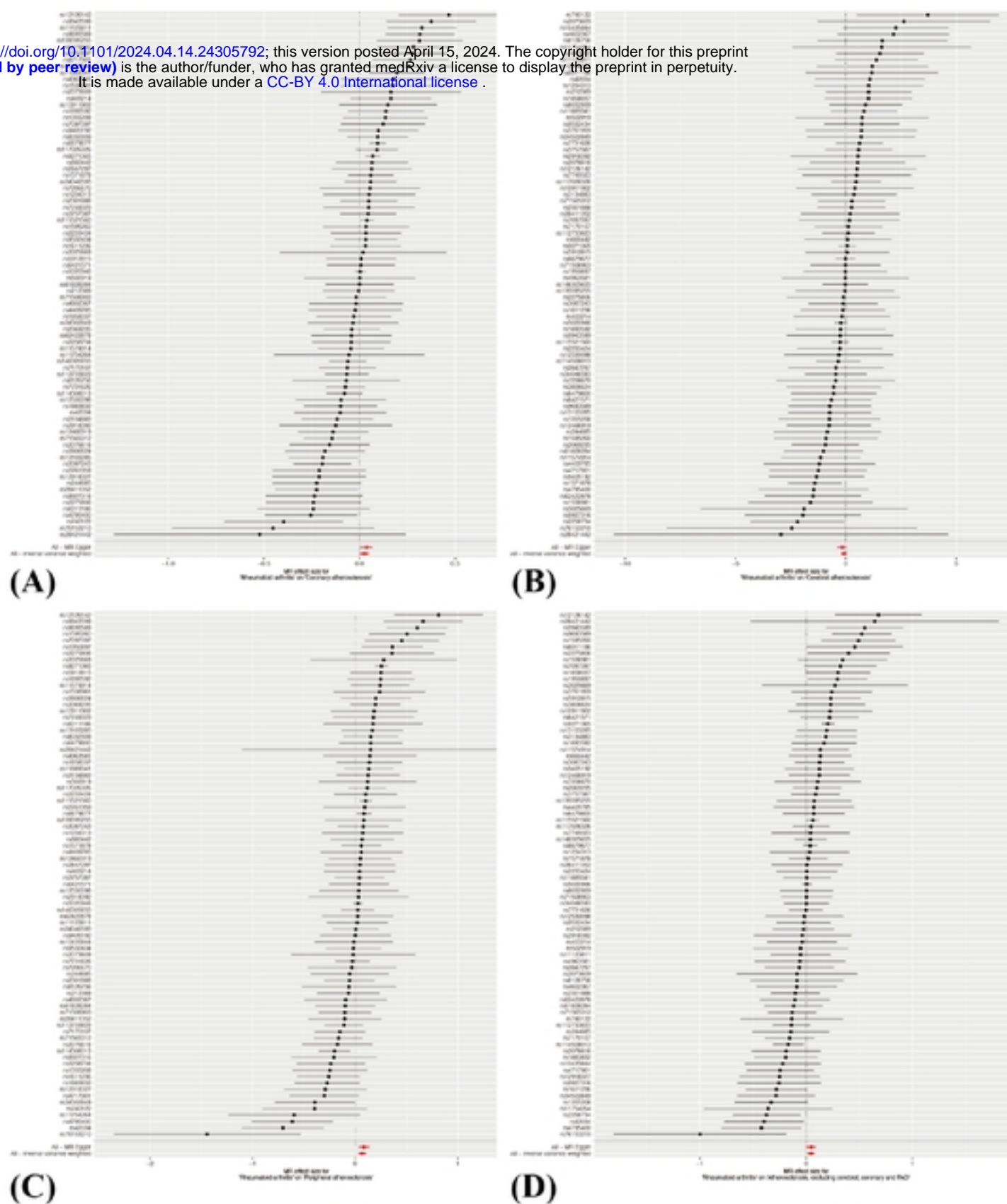


**Supplementary Figure S3. Scatterplot summary of genetically determined causality between RA and AS under different MR methods.**

**A:** causal estimates for RA on coronary AS. **B:** causal estimates for RA on cerebral AS. **C:** causal estimates for RA on peripheral AS. **D:** causal estimates for RA on ASE. The slope of each line corresponds to the causal estimates for each method. The impact of each SNPs on the exposure is depicted using a point and a horizontal line, while its effect on the outcome is

represented by a point and a vertical line. RA, rheumatoid arthritis; AS, atherosclerosis; ASE, atherosclerosis excluding coronary atherosclerosis, cerebral atherosclerosis, and PAD (peripheral arterial disease) ; SNPs , single nucleotide polymorphisms ; MR , Mendelian randomization.

medRxiv preprint doi: <https://doi.org/10.1101/2024.04.14.24305792>; this version posted April 15, 2024. The copyright holder for this preprint (which was not certified by peer review) is the author/funder, who has granted medRxiv a license to display the preprint in perpetuity. It is made available under a [CC-BY 4.0 International license](https://creativecommons.org/licenses/by/4.0/).



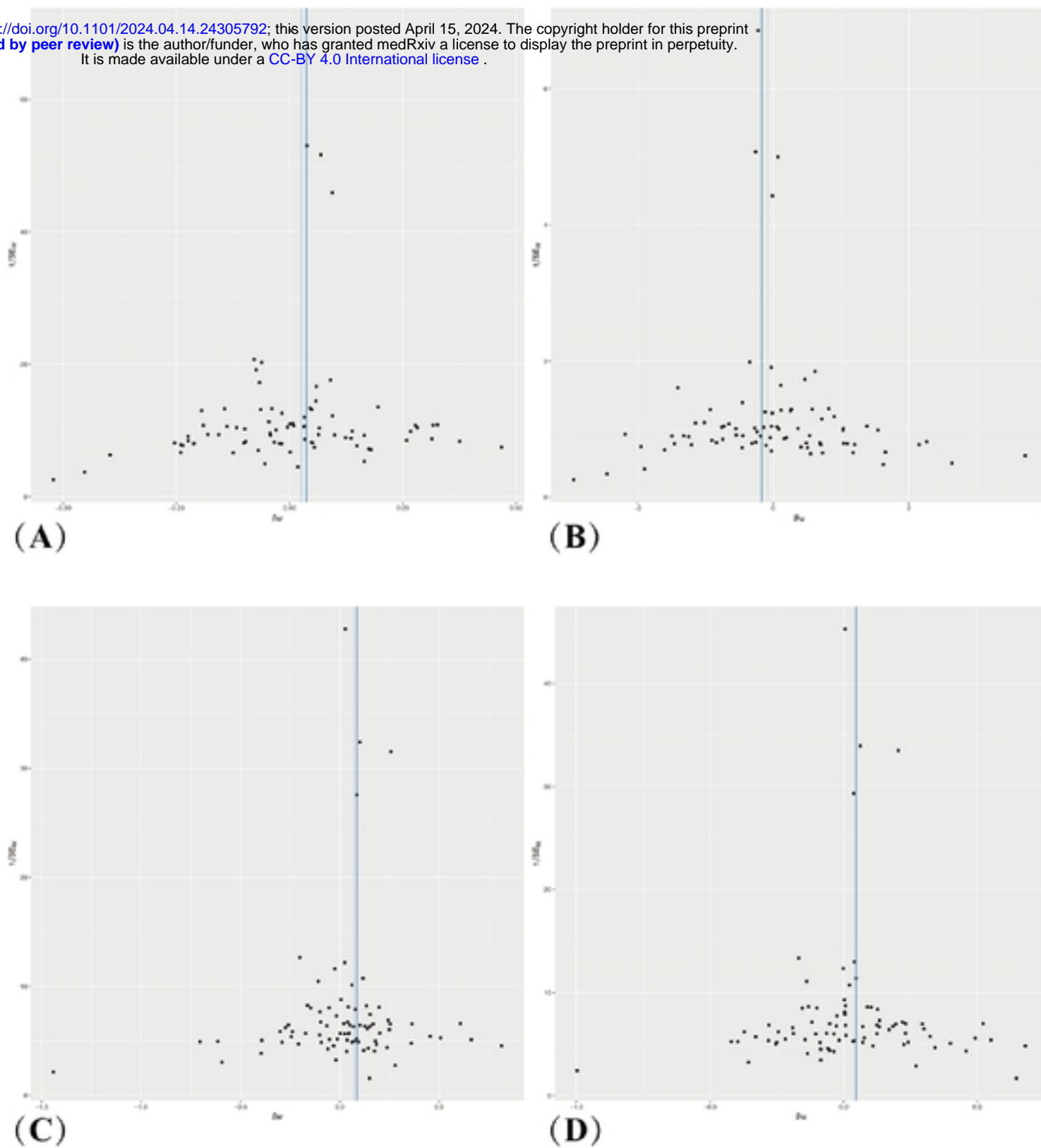
Supplementary Figure S4. Summary of forest maps of the effects of SNPs associated with

### RA on AS risk.

**A: RA on coronary AS. B: RA on cerebral AS. C: RA on peripheral AS. D: RA on ASE. RA, rheumatoid arthritis; AS, atherosclerosis; ASE, atherosclerosis excluding coronary atherosclerosis, cerebral atherosclerosis, and PAD (peripheral arterial disease) ; SNPs, single nucleotide polymorphisms.**

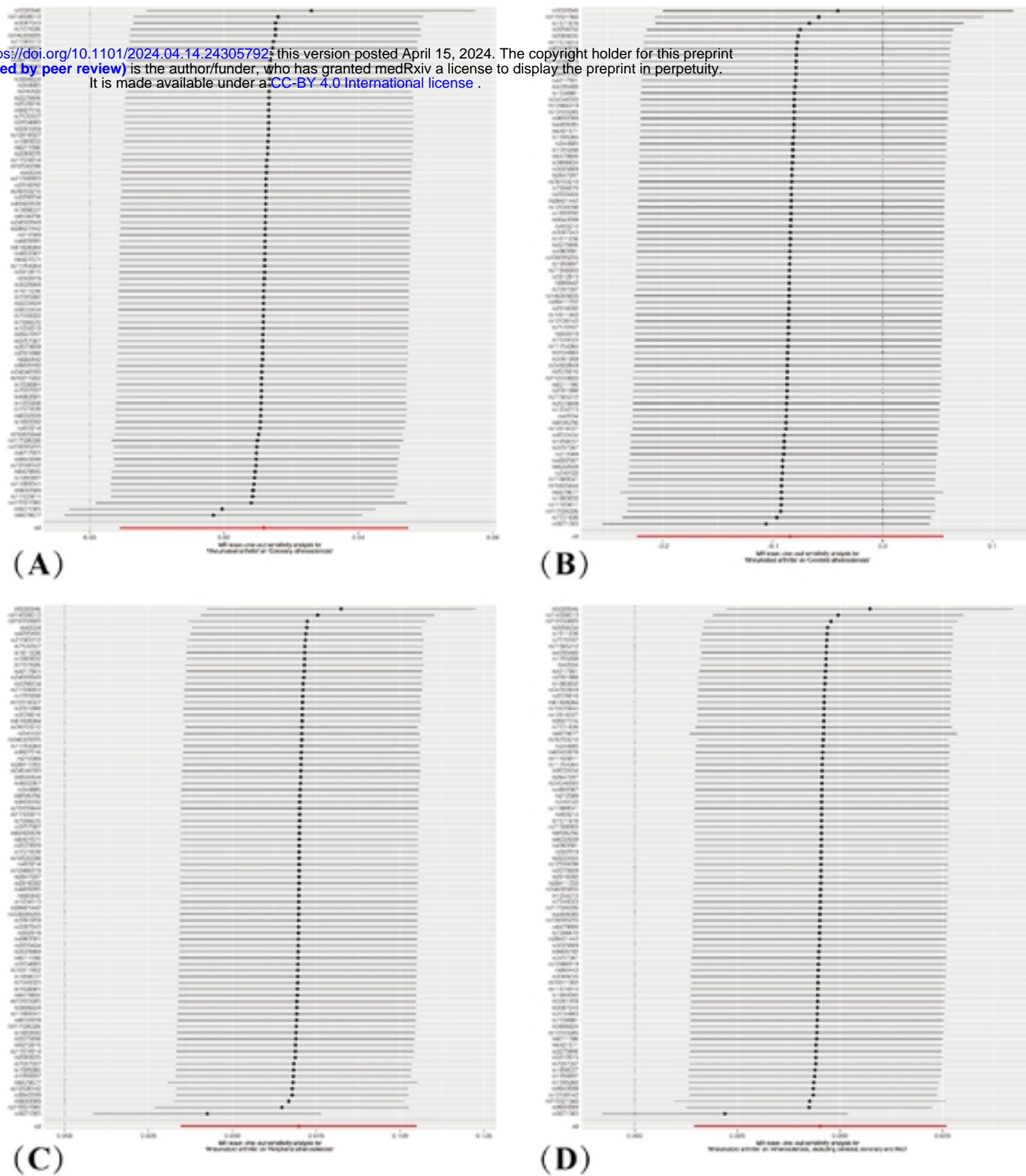
MR Method  
Inverse variance weighted  
MR Egger

medRxiv preprint doi: <https://doi.org/10.1101/2024.04.14.24305792>; this version posted April 15, 2024. The copyright holder for this preprint (which was not certified by peer review) is the author/funder, who has granted medRxiv a license to display the preprint in perpetuity. It is made available under a [CC-BY 4.0 International license](https://creativecommons.org/licenses/by/4.0/).



**Supplementary Figure S5. Funnel plot analysis of SNPs associated with RA and AS risk.**  
**A: RA on coronary AS. B: RA on cerebral AS. C: RA on peripheral AS. D: RA on ASE.** RA, rheumatoid arthritis; AS, atherosclerosis; ASE, atherosclerosis excluding coronary atherosclerosis, cerebral atherosclerosis, and PAD (peripheral arterial disease) ; SNPs, single nucleotide polymorphisms.

medRxiv preprint doi: <https://doi.org/10.1101/2024.04.14.24305792>; this version posted April 15, 2024. The copyright holder for this preprint (which was not certified by peer review) is the author/funder, who has granted medRxiv a license to display the preprint in perpetuity. It is made available under a [CC-BY 4.0 International license](https://creativecommons.org/licenses/by/4.0/).



**Supplementary Figure S6. Residual sensitivity analysis of SNPs associated with RA and AS**

risk.

**A: RA on coronary AS. B: RA on cerebral AS. C: RA on peripheral AS. D: RA on ASE. RA, rheumatoid arthritis; AS, atherosclerosis; ASE, atherosclerosis excluding coronary atherosclerosis, cerebral atherosclerosis, and PAD (peripheral arterial disease) ; SNPs, single nucleotide polymorphisms.**

**Supplementary Table S1.**

**Description of data used for the five phenotypes.**

Trait	GWAS ID	Sample size	n <sub>case</sub>	n <sub>contr</sub>	nSNPs	Population
RA	ebi-a-GCST90013534	29654	3641	26012	1310851	European
Coronary AS	finngen_R7_I9_CORATHER	29654	3641	26012	1638329	European
Cerebral AS	finngen_R7_I9_CERATHER	28438	221	28416	1638327	European
Peripheral AS	finngen_R7_DM_PERIPHATH ERO	23679	1119	22559	1638318	European
ASE	finngen_R7_I9_ATHSCLE	29982	1118	28863	1638330	European

medRxiv preprint doi: <https://doi.org/10.1101/2024.04.14.24305792>; this version posted April 15, 2024. The copyright holder for this preprint (which was not certified by peer review) is the author/funder, who has granted medRxiv a license to display the preprint in perpetuity. It is made available under a [CC-BY 4.0 International license](https://creativecommons.org/licenses/by/4.0/).

**RA, rheumatoid arthritis; AS, atherosclerosis; ASE, atherosclerosis excluding coronary atherosclerosis, cerebral atherosclerosis, and PAD (peripheral arterial disease); GWAS, genome-wide association studies; nSNPs, number of single nucleotide polymorphisms.**

**Supplementary Table S2.**

**Testing of heterogeneity and pleiotropy of the RA-associated IVs from AS.**

Outcomes	Heterogeneity test								
	Inverse-variance weighted			MR-egger			MR-egger		
	Q	Q <sub>df</sub>	P	Q	Q <sub>df</sub>	P	intercept	SE	P-val
Coronary AS	207	81	<0.0001	204	80	<0.0001	-0.0028	0.0029	0.3408
Cerebral AS	66	81	0.8926	64	80	0.8970	0.0201	0.0186	0.2839
Peripheral AS	205	81	<0.0001	203	80	<0.0001	-0.0040	0.0047	0.4021
ASE	175	81	<0.0001	175	80	<0.0001	-0.0006	0.0041	0.8846

**RA, rheumatoid arthritis; AS, atherosclerosis; ASE, atherosclerosis(excluding coronary atherosclerosis, cerebral atherosclerosis and PAD); p, P value; P-val, P value; IVs, instrumental variables; SE, standard error; Q<sub>df</sub>, Q degree of freedom.**



**Supplementary Table S3.**

The results of reverse UVMR analysis are based on IVW, MR-Egger regression and WM methods.

Exposures	Method	nSNPs	P-value	OR	OR_lci95	OR_uci95
Coronary	IVW	148	0.1180	0.9509	0.8928	1.0129
AS	MR-Egger	148	0.4765	0.9215	0.7362	1.1534
	WM	148	0.8773	0.9937	0.9165	1.0773
Cerebral	IVW	4	0.6242	0.9886	0.9440	1.0352
AS	MR-Egger	4	0.7469	0.9679	0.8141	1.1507
	WM	4	0.4272	0.9756	0.9177	1.0370
	IVW	81	0.6522	0.9812	0.9032	1.0658
Peripheral	MR-Egger	81	0.6107	0.9382	0.7346	1.1982
	WM	81	0.7128	0.9880	0.9264	1.0537
ASE	IVW	79	0.5138	0.9659	0.8704	1.0719
	MR-Egger	79	0.6172	0.9340	0.7153	1.2195
	WM	79	0.6643	0.9840	0.9150	1.0583

medRxiv preprint doi: <https://doi.org/10.1101/2024.04.14.24305792>; this version posted April 15, 2024. The copyright holder for this preprint (which was not certified by peer review) is the author/funder, who has granted medRxiv a license to display the preprint in perpetuity. It is made available under a [CC-BY 4.0 International license](https://creativecommons.org/licenses/by/4.0/).

AS, atherosclerosis; nSNPs, number of single nucleotide polymorphisms; IVW, inverse variance-weighted; WM, weighted median; OR, odds ratio; OR\_lci95, The lower limit of the 95% confidence interval for the odds ratio; OR\_uci95, The upper limit of the 95% confidence interval for the odds ratio; ASE, atherosclerosis excluding coronary atherosclerosis, cerebral atherosclerosis, and PAD (peripheral arterial disease).

**Supplementary Table S4.**

Testing of heterogeneity and pleiotropy of the AS -associated IVs from RA.

Exposures	Heterogeneity test								
	Inverse-variance weighted			MR-Egger			MR-Egger		
	Q	Q_df	P	Q	Q_df	P	intercept	SE	P-val
Coronary	213	147	0.0003	213	146	0.0002	0.0018	0.0062	0.7753
AS									
Cerebral	5	3	0.1664	5	2	0.0861	0.0117	0.0445	0.8167
AS									
Peripheral	307	80	<0.0001	307	79	<0.0001	0.0042	0.0111	0.7039
AS									
ASE	387	78	<0.0001	386	77	<0.0001	0.0032	0.0121	0.7889

RA, rheumatoid arthritis; AS, atherosclerosis; ASE, atherosclerosis(excluding coronary atherosclerosis, cerebral atherosclerosis and PAD); p, P value; P-val, P value; SE, standard error; Q\_df, Q degree of freedom.