

Table S1. Characteristics, including age, gender, and causes of pneumonia, of patients whose CT scans were used

	Lung cancer CT scans (n = 1014)	Non-cancer (Pneumonia) CT scans (n = 1014)
Age (year)		
0 – 44	7.89%	40.24%
45 – 54	18.73%	13.02%
55 – 64	29.59%	9.17%
From 65	42.80%	10.75%
Unknown	0.99%	26.82%
Sex		
Female	49.70%	27.42%
Male	50.30%	45.56%
Unknown	0.00%	27.02%
Causes of pneumonia		
Bacteria	N/A	32.56%
Virus	N/A	48.64%
Fungi	N/A	17.59%
Mixed causes	N/A	1.21%

*N/A: not available

Table S2. Model training parameters and classifier architectures

No.	Base model	Input size	Learning rate	Epsilon	Epochs	Classifier architecture
1	DenseNet121	224	6.00E-05	1.00E-02	120	Up Sampling 2D (size=(4, 4)) Global Average Pooling 2D Batch Normalization Dropout (0.5) Dense (256, ReLu) Batch Normalization Dropout (0.5) Dense (2, Softmax)
2	MobileNetV2	224	1.00E-05	5.00E-03	120	Up Sampling 2D (size=(4, 4)) Global Average Pooling 2D Batch Normalization Dropout (0.3) Dense (256, ReLu) Batch Normalization Dropout (0.3) Dense (2, Softmax)
3	InceptionV3	299	1.00E-05	1.00E-02	120	Up Sampling 2D (size=(4, 4)) Global Average Pooling 2D Batch Normalization Dropout (0.3) Dense (256, ReLu) Batch Normalization Dropout (0.3) Dense (2, Softmax)
4	InceptionResNetV2	299	1.00E-04	7.50E-02	150	Up Sampling 2D (size=(4, 4)) Global Average Pooling 2D Batch Normalization Dropout (0.5) Dense (512, ReLu)

						Batch Normalization Dropout (0.5) Dense (2, Softmax)
5	ResNet50	224	1.00E-05	1.00E-02	100	Up Sampling 2D (size=(4, 4)) Global Average Pooling 2D Batch Normalization Dropout (0.3) Dense (256, ReLu) Batch Normalization Dropout (0.3) Dense (128, ReLu) Batch Normalization Dropout (0.3) Dense (2, Softmax)
6	ResNet101	224	1.00E-05	1.00E-02	120	Up Sampling 2D (size=(4, 4)) Global Average Pooling 2D Batch Normalization Dropout (0.3) Dense (512, ReLu) Batch Normalization Dropout (0.3) Dense (256, ReLu) Batch Normalization Dropout (0.3) Dense (2, Softmax)
7	VGG16	320	5E-06	1.00E-02	120	Up Sampling 2D (size=(4, 4)) Global Average Pooling 2D Batch Normalization Dense (256, ReLu) Batch Normalization Dense (2, Softmax)

8	VGG19	320	5E-06	5.00E-03	120	Up Sampling 2D (size=(4, 4)) Global Average Pooling 2D Batch Normalization Dense (256, ReLu) Batch Normalization Dense (2, Softmax)
9	Xception	299	1.00E-04	1.00E-01	120	Up Sampling 2D (size=(4, 4)) Global Average Pooling 2D Batch Normalization Dense (256, ReLu) Batch Normalization Dropout (0.5) Dense (128, ReLu) Batch Normalization Dropout (0.5) Dense (2, Softmax)

Table S3. Number of trainable and non-trainable parameters of each fine-tuned model

	DenseNet121	MobileNetV2	InceptionV3	InceptionResV2	ResNet50	ResNet101	VGG16	VGG19	Xception
Total parameters	7,305,538	2,592,578	22,337,058	55,132,898	24,155,138	43,850,370	14,849,602	20,159,298	21,428,906
Trainable parameters	3,154,882	2,075,842	14,005,890	24,335,074	17,776,002	23,993,602	11,932,418	14,292,226	11,118,346
Nontrainable parameters	4,150,656	516,736	8,331,168	30,797,824	6,379,136	19,856,768	2,917,184	5,867,072	10,310,560

Figure S1: Curves of training accuracy and validation accuracy

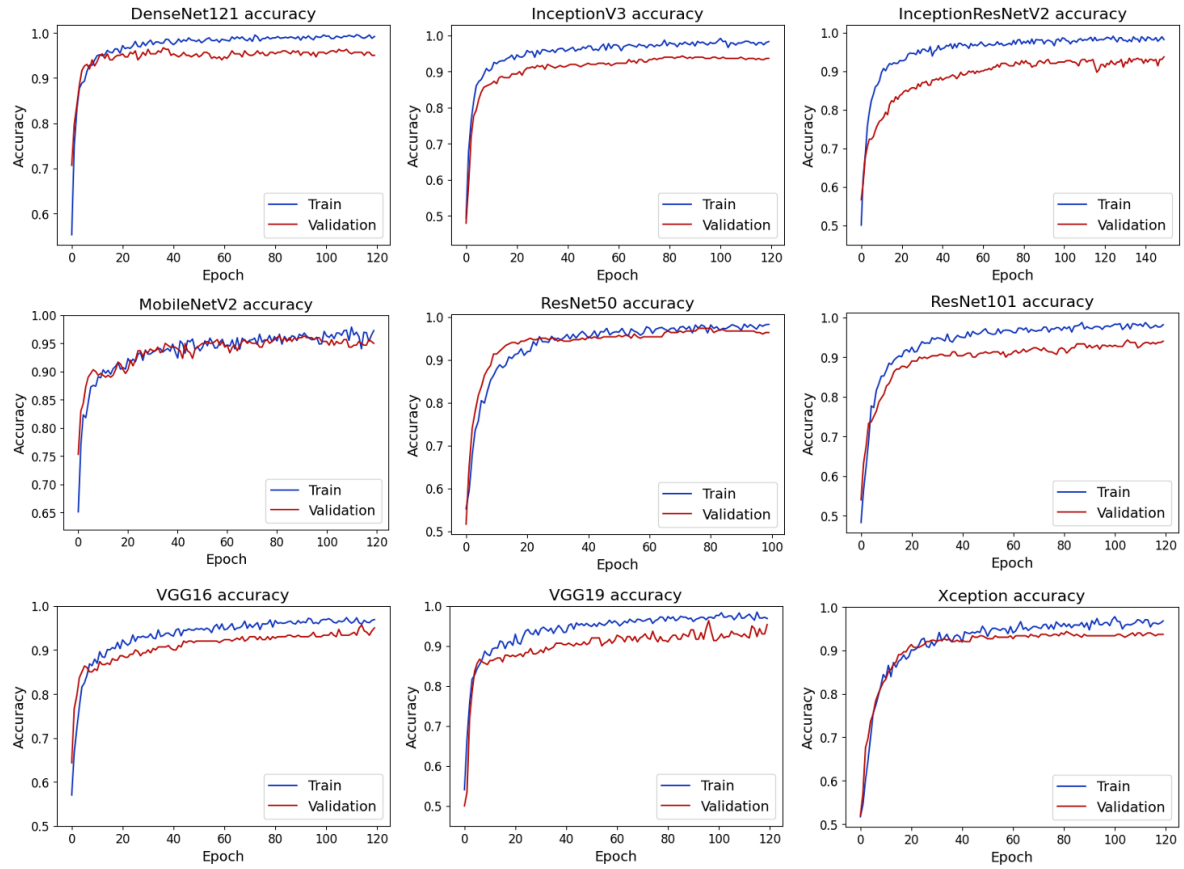


Figure S2: Curves of training loss and validation loss

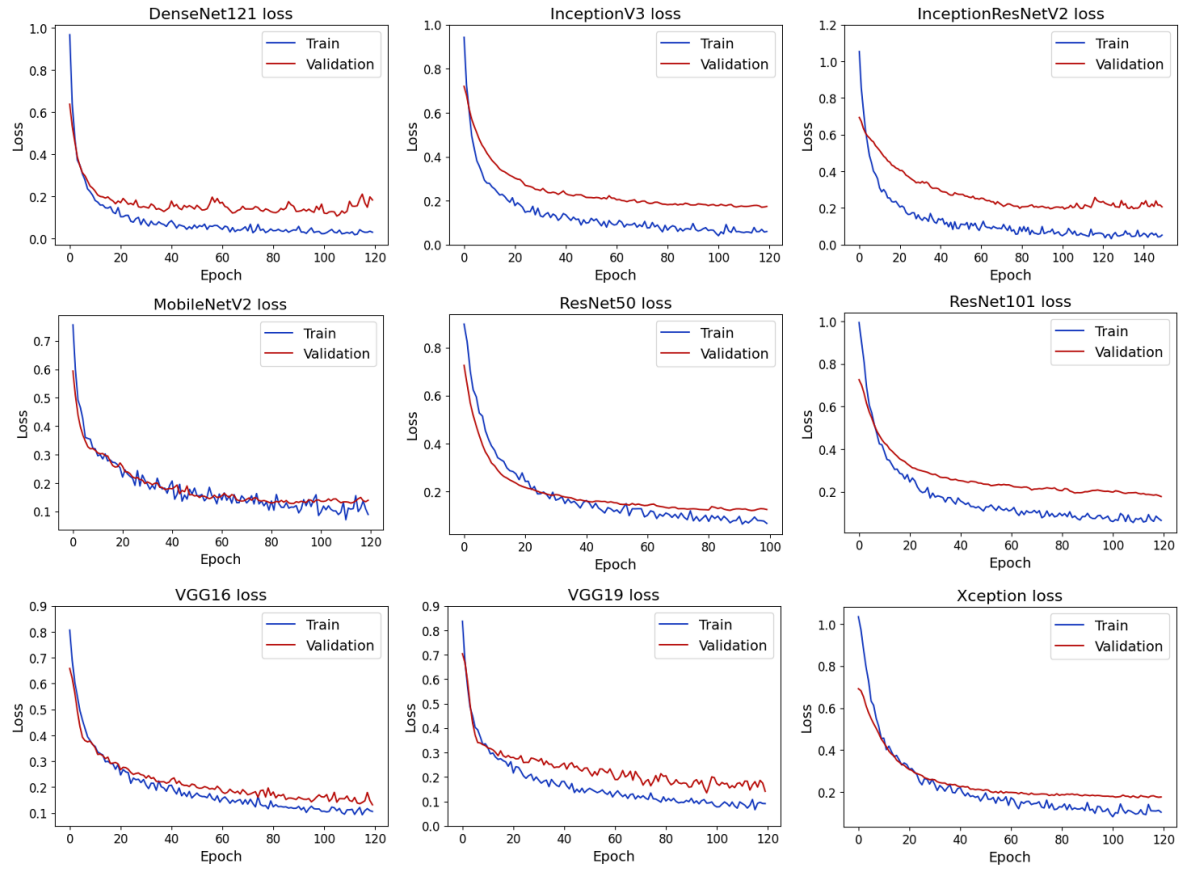


Figure S3: Gradient-weighted Class Activation Map (Grad-CAM) for fine-tuned and pretrained layers of each model

