



PRISMA 2020 Checklist

Section and Topic	Item #	Checklist item	Location where item is reported
TITLE			
Title	1	Identify the report as a systematic review.	Yes Page 1 Line 2
ABSTRACT			
Abstract	2	See the PRISMA 2020 for Abstracts checklist.	Page 1 Line 4
INTRODUCTION			
Rationale	3	Describe the rationale for the review in the context of existing knowledge.	Yes Page 3 Line 3
Objectives	4	Provide an explicit statement of the objective(s) or question(s) the review addresses.	Page 3 Line 26 and Supplement-2 with PICO statements
METHODS			
Eligibility criteria	5	Specify the inclusion and exclusion criteria for the review and how studies were grouped for the syntheses.	Page 4 Line 7
Information sources	6	Specify all databases, registers, websites, organisations, reference lists and other sources searched or consulted to identify studies. Specify the date when each source was last searched or consulted.	Page 3 Line 44
Search strategy	7	Present the full search strategies for all databases, registers and websites, including any filters and limits used.	Page 3 Line 45-50
Selection process	8	Specify the methods used to decide whether a study met the inclusion criteria of the review, including how many reviewers screened each record and each report retrieved, whether they worked independently, and if applicable, details of automation tools used in the process.	Page 4 Line 5
Data collection process	9	Specify the methods used to collect data from reports, including how many reviewers collected data from each report, whether they worked independently, any processes for obtaining or confirming data from study investigators, and if applicable, details of automation tools used in the process.	Page 4 Line 5 and Line 26
Data items	10a	List and define all outcomes for which data were sought. Specify whether all results that were compatible with each outcome domain in each study were sought (e.g. for all measures, time points, analyses), and if not, the methods used to decide which results to collect.	Page 4 Line 31-39
	10b	List and define all other variables for which data were sought (e.g. participant and intervention characteristics, funding sources). Describe any assumptions made about any missing or unclear information.	Page 4 Line 31
Study risk of bias assessment	11	Specify the methods used to assess risk of bias in the included studies, including details of the tool(s) used, how many reviewers assessed each study and whether they worked independently, and if applicable, details of automation tools used in the process.	Page 4 Line 42
Effect measures	12	Specify for each outcome the effect measure(s) (e.g. risk ratio, mean difference) used in the synthesis or presentation of results.	Page 5 Line 1-2
Synthesis methods	13a	Describe the processes used to decide which studies were eligible for each synthesis (e.g. tabulating the study intervention characteristics and comparing against the planned groups for each synthesis (item #5)).	Page 4 Line 15
	13b	Describe any methods required to prepare the data for presentation or synthesis, such as handling of missing summary statistics, or data conversions.	Page 4 Line 31-39
	13c	Describe any methods used to tabulate or visually display results of individual studies and syntheses.	Page 5 Line 35



PRISMA 2020 Checklist

Section and Topic	Item #	Checklist item	Location where item is reported
	13d	Describe any methods used to synthesize results and provide a rationale for the choice(s). If meta-analysis was performed, describe the model(s), method(s) to identify the presence and extent of statistical heterogeneity, and software package(s) used.	Page 4 Line 47
	13e	Describe any methods used to explore possible causes of heterogeneity among study results (e.g. subgroup analysis, meta-regression).	Page 5 Line-1
	13f	Describe any sensitivity analyses conducted to assess robustness of the synthesized results.	Page 5 line 2
Reporting bias assessment	14	Describe any methods used to assess risk of bias due to missing results in a synthesis (arising from reporting biases).	Page 4 Line 41
Certainty assessment	15	Describe any methods used to assess certainty (or confidence) in the body of evidence for an outcome.	GRADE-Page 5 Line-3
RESULTS			
Study selection	16a	Describe the results of the search and selection process, from the number of records identified in the search to the number of studies included in the review, ideally using a flow diagram.	Page 5 Line 7
	16b	Cite studies that might appear to meet the inclusion criteria, but which were excluded, and explain why they were excluded.	Page 5 line 12
Study characteristics	17	Cite each included study and present its characteristics.	Page 5 Line 15
Risk of bias in studies	18	Present assessments of risk of bias for each included study.	Page 5 Line 32
Results of individual studies	19	For all outcomes, present, for each study: (a) summary statistics for each group (where appropriate) and (b) an effect estimate and its precision (e.g. confidence/credible interval), ideally using structured tables or plots.	Page-5 Line 44 Figures-2,3,4,5,6
Results of syntheses	20a	For each synthesis, briefly summarise the characteristics and risk of bias among contributing studies.	Supplementary material-3
	20b	Present results of all statistical syntheses conducted. If meta-analysis was done, present for each the summary estimate and its precision (e.g. confidence/credible interval) and measures of statistical heterogeneity. If comparing groups, describe the direction of the effect.	Figures 2-6
	20c	Present results of all investigations of possible causes of heterogeneity among study results.	Page 5 Line 15
	20d	Present results of all sensitivity analyses conducted to assess the robustness of the synthesized results.	Page 7 Line 40
Reporting biases	21	Present assessments of risk of bias due to missing results (arising from reporting biases) for each synthesis assessed.	Supplementary material-3
Certainty of evidence	22	Present assessments of certainty (or confidence) in the body of evidence for each outcome assessed.	Supplement-6
DISCUSSION			
Discussion	23a	Provide a general interpretation of the results in the context of other evidence.	Page 8 line 27-39
	23b	Discuss any limitations of the evidence included in the review.	Page 9 Line 1
	23c	Discuss any limitations of the review processes used.	Page 10 line 9
	23d	Discuss implications of the results for practice, policy, and future research.	Page 10 Line



PRISMA 2020 Checklist

Section and Topic	Item #	Checklist item	Location where item is reported
			20
OTHER INFORMATION			
Registration and protocol	24a	Provide registration information for the review, including register name and registration number, or state that the review was not registered.	Page 3 Line 41
	24b	Indicate where the review protocol can be accessed, or state that a protocol was not prepared.	Page 3 Line 40
	24c	Describe and explain any amendments to information provided at registration or in the protocol.	Page 3 Line 41
Support	25	Describe sources of financial or non-financial support for the review, and the role of the funders or sponsors in the review.	Page 11 Line 4
Competing interests	26	Declare any competing interests of review authors.	Page 11 Line 6
Availability of data, code and other materials	27	Report which of the following are publicly available and where they can be found: template data collection forms; data extracted from included studies; data used for all analyses; analytic code; any other materials used in the review.	Supplementary material 1-6

From: Page MJ, McKenzie JE, Bossuyt PM, Boutron I, Hoffmann TC, Mulrow CD, et al. The PRISMA 2020 statement: an updated guideline for reporting systematic reviews. *BMJ* 2021;372:n71. doi: 10.1136/bmj.n71

For more information, visit: <http://www.prisma-statement.org/>

Supplementary material 2

Review Question

In adult patients with an acute ischemic stroke due to a large vessel occlusion who undergo thrombectomy does an intensive blood pressure control (Target SBP cutoff as defined by the respective study or upper limit of target SBP cut-off of 140mmHg) as compared to a less intensive blood pressure control up to 24 hours after the procedure lead to a good functional outcome?

Table1-PICO Statements

Population	All adult (>18years) patients of acute ischemic stroke due to a large vessel occlusion undergoing thrombectomy.
Intervention	Intensive Blood Pressure Control (Target SBP cutoff as defined in the respective study definition) up to 24 hours after the procedure.
Control	Less Intensive Blood Pressure Control (Target SBP cutoff as defined by the respective study definition) up to 24 hours after the procedure.
Primary Efficacy Outcome	Proportion of patients achieving functional independence at 90 days defined as mRS of 0-2.

SBP-Systolic Blood Pressure; mRS-modified Rankin Scale

Safety outcomes assessed-

1. Death at 90days
2. Requirement of decompressive surgery
3. Symptomatic ICH as per respective study definition.

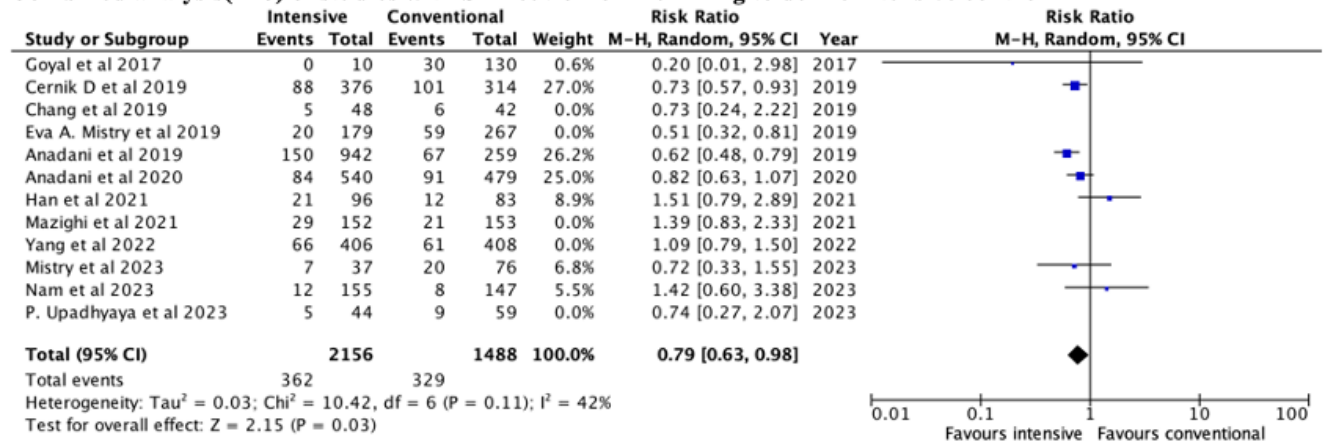
Table-2-ROB2 tool for the studies included

Basic inform	Time	2024/03/02 20:36				
	Unique ID		1	2	3	4
Assessor	Dr.Baikuntha		Dr.Baikuntha	Dr.Baikuntha	Dr.Baikuntha	
Study ID	Yang 2022		Mazighi 2021	Nam 2023	Mistry 2023	
Reference	Yang 2022		Mazighi 2021	Nam 2023	Mistry 2023	
Experimental	Intensive Control		Intensive Control	Intensive Control	Intensive Control	
Comparator	Conventional		Conventional	Conventional	Conventional	
Outcome	mRS 0-2		mRS 0-2	mRS 0-2	mRS 0-2	
Results						
Aim	assignment to intervention (the 'intention-to-treat')		assignment to intervention (the 'intention-to-treat')	assignment to intervention (the 'intention-to-treat')	assignment to intervention (the 'intention-to-treat')	
Effect of adhering to intervention?	NA		NA	NA	NA	
Weight						
Domain 1. R Sources	Journal article(s); Trial protocol; Statistician's assessment		Journal article(s); Trial protocol; Statistician's assessment	Journal article(s); Trial protocol; Statistician's assessment	Journal article(s); Trial protocol; Statistician's assessment	
	1.1 Y		Y	Y	Y	
	1.2 Y		Y	Y	Y	
Note for 1.1&1.2						
	1.3 N		N	N	N	
Note for 1.3						
1.0 Algorithm result						
1.0 Assessor's Judgement	Low		Low	Low	Low	
Domain 2. D	1.0 General note					
	1.0 Optional Question					
	1.0 Note for optional question					
	2.1 Y		Y	Y	Y	
	2.2 Y		Y	Y	Y	
Note for 2.1&2.2						
	2.3 PY		Y	Y	Y	
Note for 2.3						
	2.4 PY		Y	Y	Y	
Note for 2.4						
	2.5 PY		PY	PY	PY	
Note for 2.5						
	2.6 Y		N	N	N	
Note for 2.6						
Domain 3. M	2.7 NA					
	Note for 2.7					
	2.0 Algorithm result					
	2.0 Assessor's Judgement	Some concerns	High	High	High	
	2.0 General Notes					
	2.0 Optional Question					
	2.0 Note for optional question					
	3.1 Y		Y	Y	Y	
Note for 3.1						
Domain 4. M	3.2 NA					
	Note for 3.2					
	3.3 NA					
	Note for 3.3&3.4					
	3.4 NA					
	3.0 Algorithm result					
	3.0 Assessor's judgement	Low	Low	Low	Low	
	3.0 General notes					
	3.0 Optional Question					
	3.0 Note for optional question					
	4.1 N		N	N	N	
Domain 5. S	Note for 4.1					
	4.2 N		N	N	N	
	Note for 4.2					
	4.3 N		N	N	N	
	Note for 4.3					
	4.4 NA					
	Note for 4.4&4.5					
	4.5 NA					
Domain 6. O	4.0 Algorithm result					
	4.0 Assessor's Judgement	Low	Low	Low	Low	
	4.0 General note					
	4.0 Optional Question					
	4.0 Note for optional question					
	5.1 Y		Y	Y	Y	
Note for 5.1						
	5.2 N		N	N	N	
Note for 5.2						
	5.3 N		N	N	N	
Note for 5.3						
	5.0 Algorithm result					
	5.0 Assessor's Judgement	Low	Low	Low	Low	
	5.0 General note					
	5.0 Optional Question					
	5.0 Note for optional question					
	Algorithm's overall Judgement					
	Assessor's overall Judgement	Some concerns	High risk	High risk	High risk	

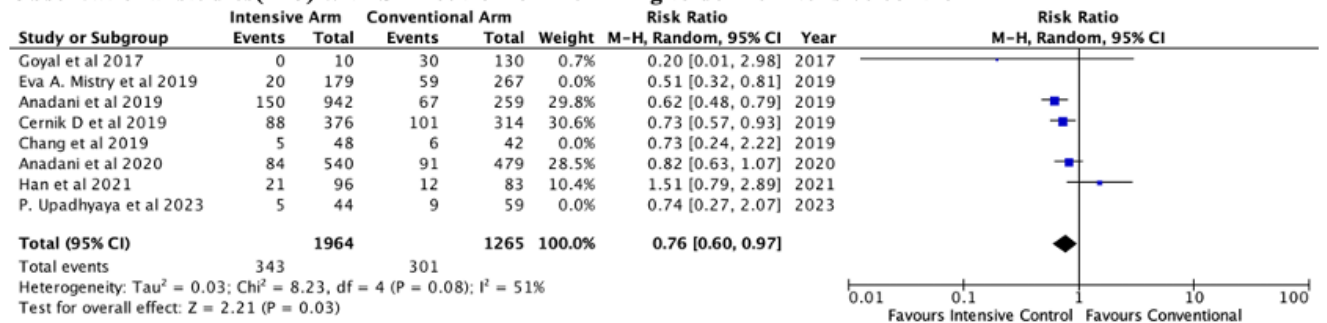
Supplement-4

Supplemental Figure-1-Death at 90 days using data from studies using different SBP targets to define intensive control

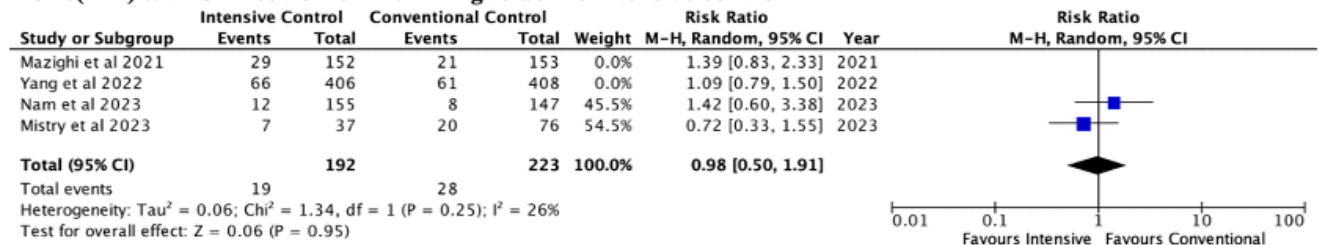
Combined analysis(n=7) of studies with SBP cut-off of 140mmHg to define intensive control



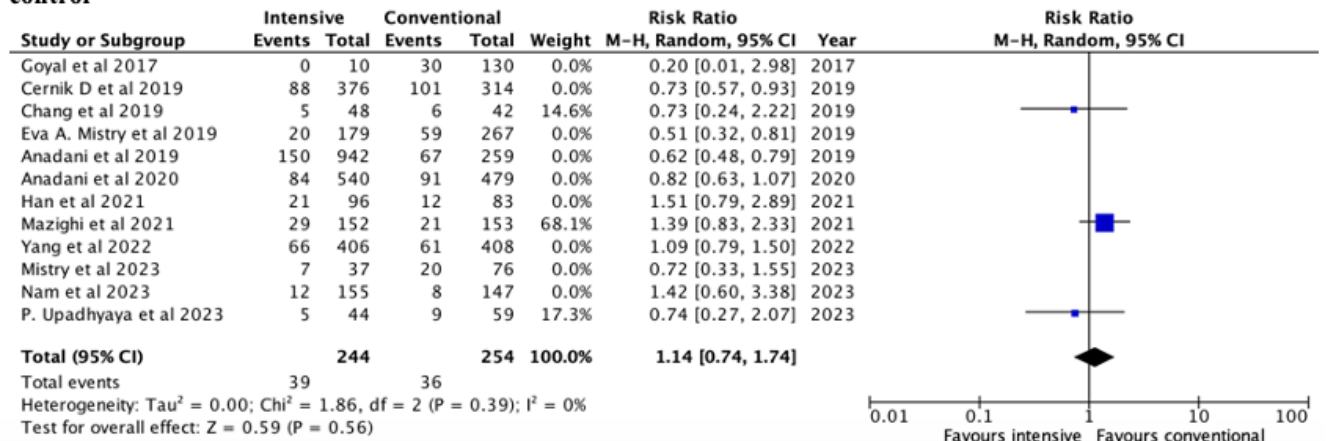
Observational studies(n=5) with SBP cut-off of 140mmHg to define intensive control



RCTs(n=2) with SBP cut-off of 140mmHg to define intensive control



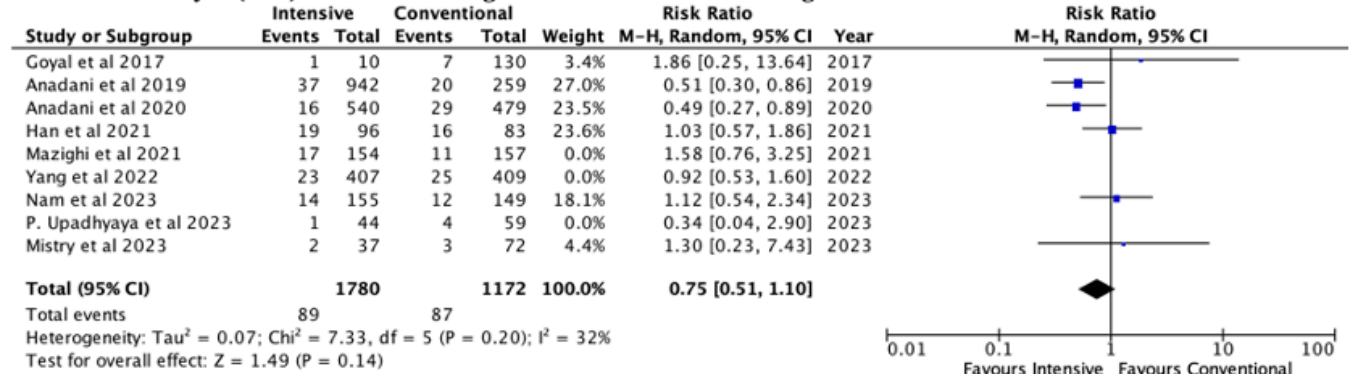
Combined Analysis of studies(n=3) using a SBP cut-off of 130mmHg (Death@90d) for intensive control



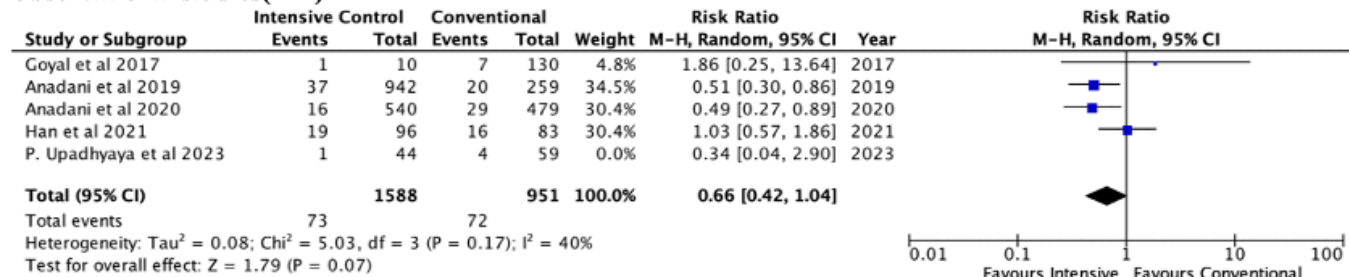
Supplemental Figure-2

Symptomatic intracranial haemorrhage(sICH) using data from studies using different SBP targets to define intensive control

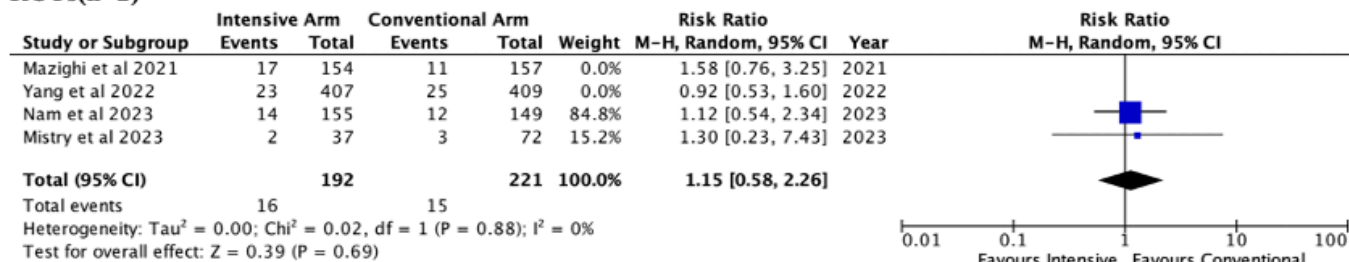
Combined Analysis(n=6) for studies using a SBP cut-off of 140mmHg for intensive control



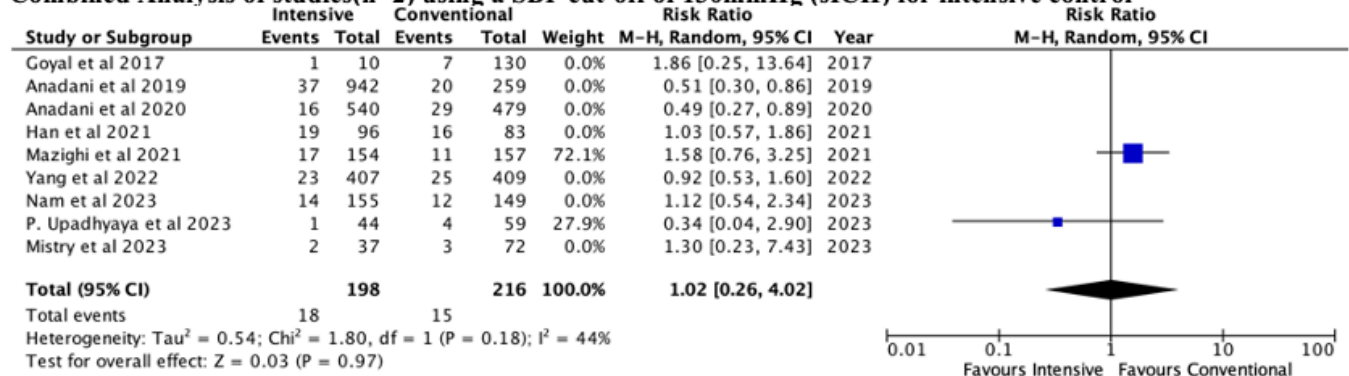
Observational studies(n=4)



RCTs(n=2)



Combined Analysis of studies(n=2) using a SBP cut-off of 130mmHg (sICH) for intensive control



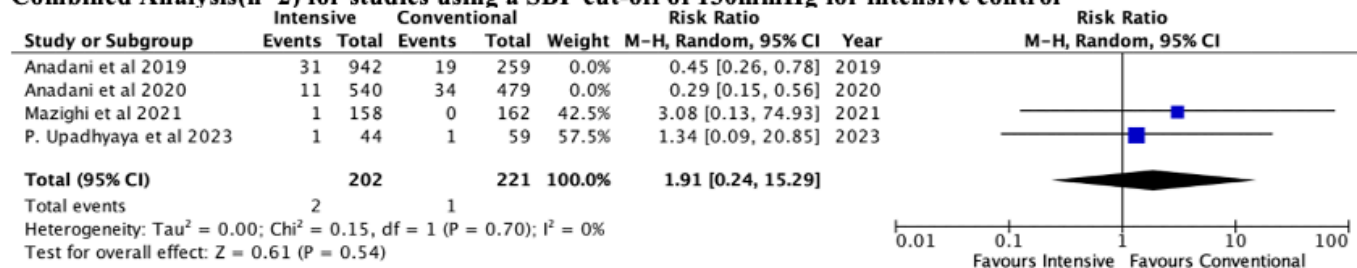
Supplemental Figure-3

Decompressive surgery using data from studies using different SBP targets to define intensive control

Combined Analysis(n=2) for studies using a SBP cut-off of 140mmHg for intensive control



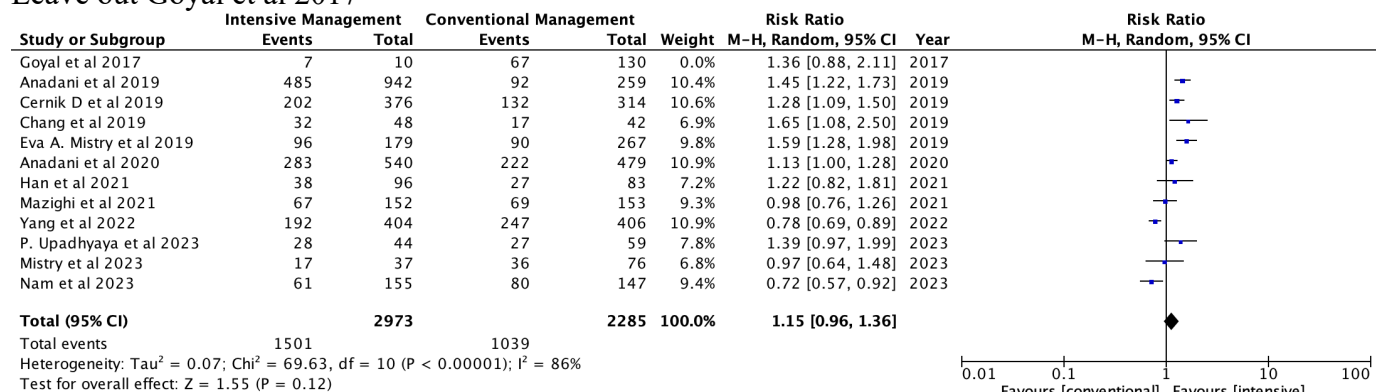
Combined Analysis(n=2) for studies using a SBP cut-off of 130mmHg for intensive control



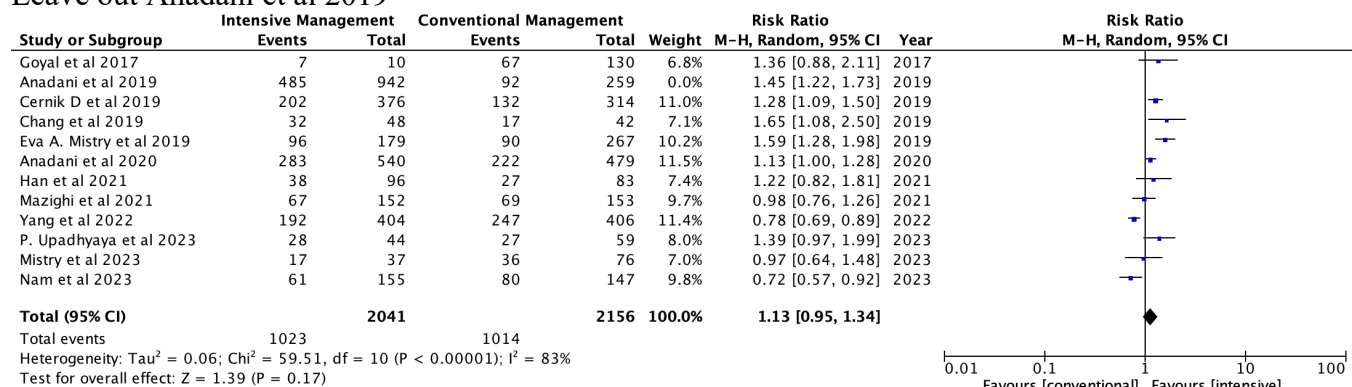
Supplement-2-Leave out one study analysis

Studies in **bold** and having a * had a significant change in the primary outcome after leaving them out.

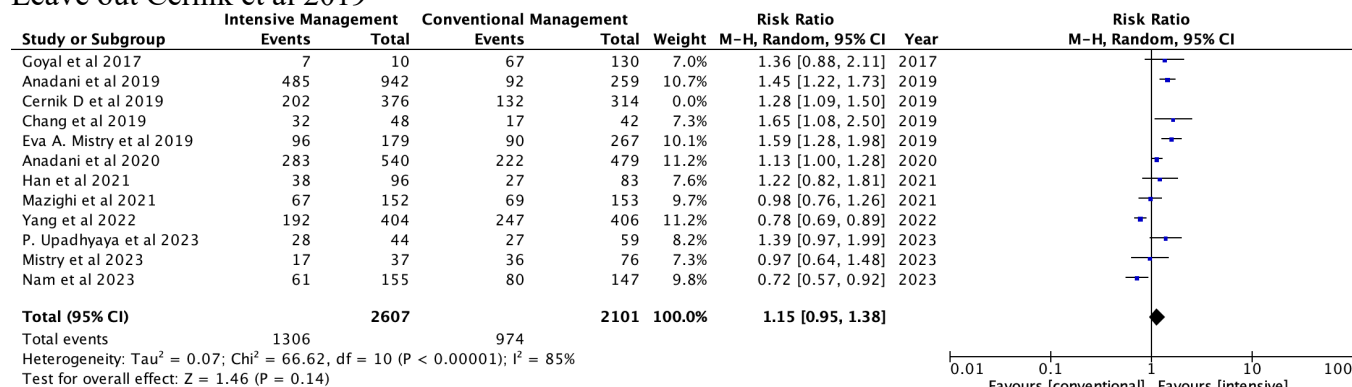
Leave out Goyal et al 2017



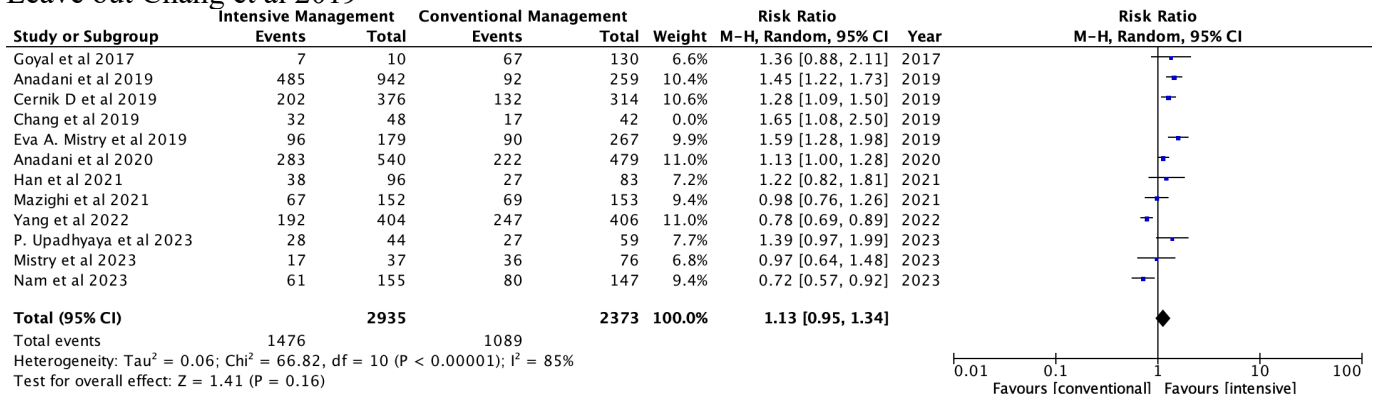
Leave out Anadani et al 2019



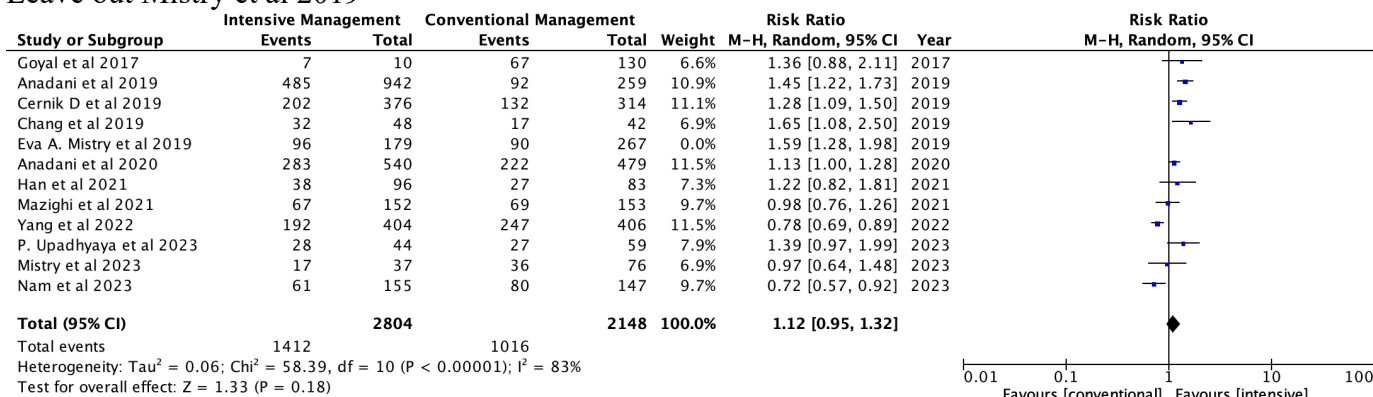
Leave out Cernik et al 2019



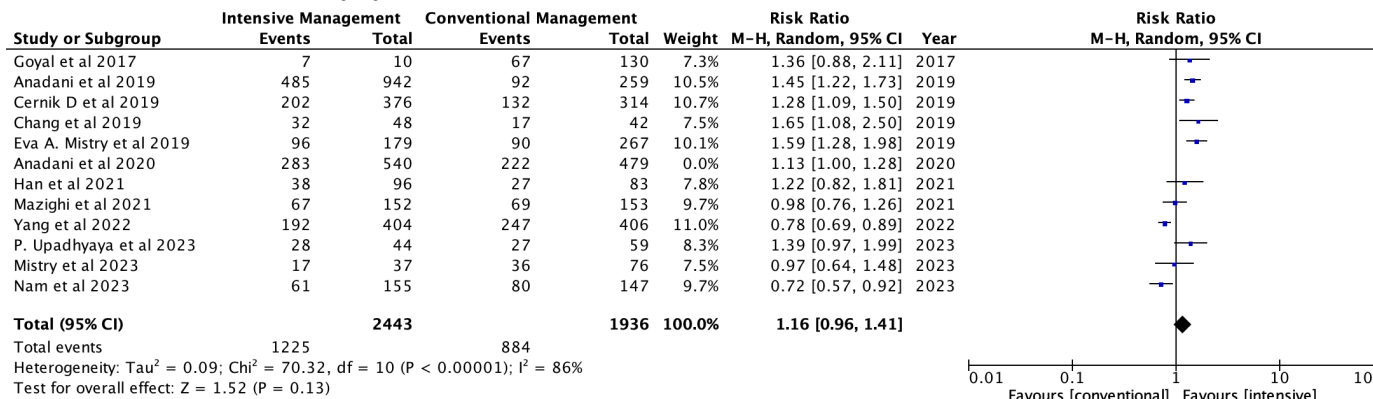
Leave out Chang et al 2019



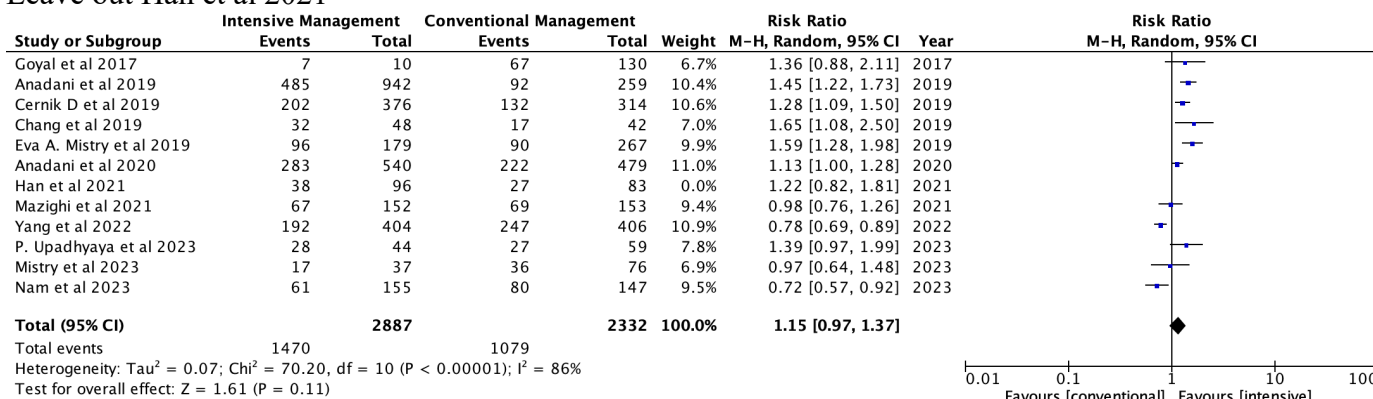
Leave out Mistry et al 2019



Leave out Anadani et al 2020

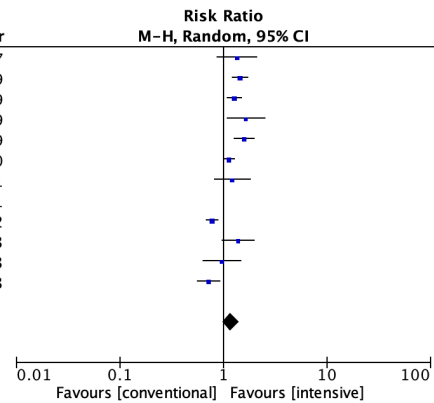


Leave out Han et al 2021



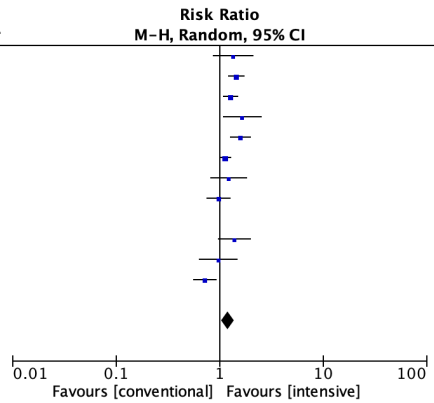
Leave out Mazighi et al

Study or Subgroup	Intensive Management		Conventional Management		Weight	Risk Ratio		Year
	Events	Total	Events	Total		M-H, Random, 95% CI		
Goyal et al 2017	7	10	67	130	6.9%	1.36 [0.88, 2.11]	2017	
Anadani et al 2019	485	942	92	259	10.6%	1.45 [1.22, 1.73]	2019	
Cernik D et al 2019	202	376	132	314	10.8%	1.28 [1.09, 1.50]	2019	
Chang et al 2019	32	48	17	42	7.2%	1.65 [1.08, 2.50]	2019	
Eva A. Mistry et al 2019	96	179	90	267	10.1%	1.59 [1.28, 1.98]	2019	
Anadani et al 2020	283	540	222	479	11.2%	1.13 [1.00, 1.28]	2020	
Han et al 2021	38	96	27	83	7.5%	1.22 [0.82, 1.81]	2021	
Mazighi et al 2021	67	152	69	153	0.0%	0.98 [0.76, 1.26]	2021	
Yang et al 2022	192	404	247	406	11.1%	0.78 [0.69, 0.89]	2022	
P. Upadhyaya et al 2023	28	44	27	59	8.0%	1.39 [0.97, 1.99]	2023	
Mistry et al 2023	17	37	36	76	7.1%	0.97 [0.64, 1.48]	2023	
Nam et al 2023	61	155	80	147	9.7%	0.72 [0.57, 0.92]	2023	
Total (95% CI)		2831		2262	100.0%	1.18 [0.99, 1.41]		
Total events	1441		1037					
Heterogeneity: Tau ² = 0.07; Chi ² = 69.57, df = 10 (P < 0.00001); I ² = 86%								
Test for overall effect: Z = 1.80 (P = 0.07)								



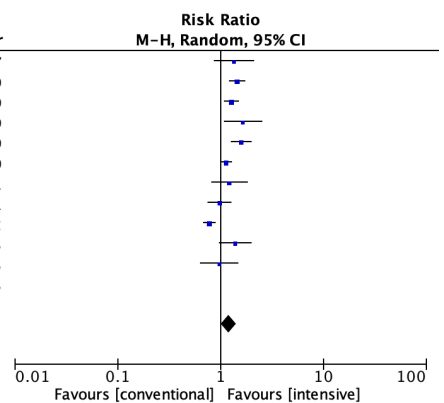
Leave out Yang et al 2022*

Study or Subgroup	Intensive Management		Conventional Management		Weight	Risk Ratio		Year
	Events	Total	Events	Total		M-H, Random, 95% CI		
Goyal et al 2017	7	10	67	130	6.0%	1.36 [0.88, 2.11]	2017	
Anadani et al 2019	485	942	92	259	11.7%	1.45 [1.22, 1.73]	2019	
Cernik D et al 2019	202	376	132	314	12.1%	1.28 [1.09, 1.50]	2019	
Chang et al 2019	32	48	17	42	6.3%	1.65 [1.08, 2.50]	2019	
Eva A. Mistry et al 2019	96	179	90	267	10.7%	1.59 [1.28, 1.98]	2019	
Anadani et al 2020	283	540	222	479	12.9%	1.13 [1.00, 1.28]	2020	
Han et al 2021	38	96	27	83	6.7%	1.22 [0.82, 1.81]	2021	
Mazighi et al 2021	67	152	69	153	9.9%	0.98 [0.76, 1.26]	2021	
Yang et al 2022	192	404	247	406	0.0%	0.78 [0.69, 0.89]	2022	
P. Upadhyaya et al 2023	28	44	27	59	7.5%	1.39 [0.97, 1.99]	2023	
Mistry et al 2023	17	37	36	76	6.3%	0.97 [0.64, 1.48]	2023	
Nam et al 2023	61	155	80	147	10.0%	0.72 [0.57, 0.92]	2023	
Total (95% CI)		2579		2009	100.0%	1.21 [1.05, 1.39]		
Total events	1316		859					
Heterogeneity: Tau ² = 0.04; Chi ² = 35.55, df = 10 (P = 0.0001); I ² = 72%								
Test for overall effect: Z = 2.64 (P = 0.008)								



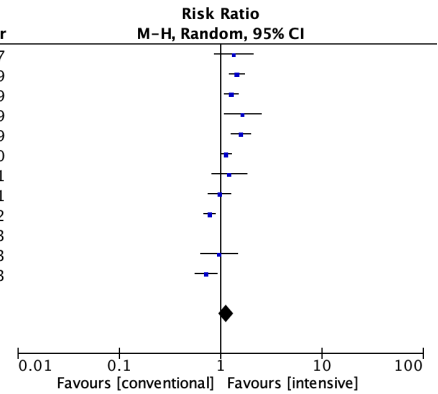
Leave out Nam et al 2023*

Study or Subgroup	Intensive Management		Conventional Management		Weight	Risk Ratio		Year
	Events	Total	Events	Total		M-H, Random, 95% CI		
Goyal et al 2017	7	10	67	130	6.6%	1.36 [0.88, 2.11]	2017	
Anadani et al 2019	485	942	92	259	10.8%	1.45 [1.22, 1.73]	2019	
Cernik D et al 2019	202	376	132	314	11.1%	1.28 [1.09, 1.50]	2019	
Chang et al 2019	32	48	17	42	6.9%	1.65 [1.08, 2.50]	2019	
Eva A. Mistry et al 2019	96	179	90	267	10.2%	1.59 [1.28, 1.98]	2019	
Anadani et al 2020	283	540	222	479	11.5%	1.13 [1.00, 1.28]	2020	
Han et al 2021	38	96	27	83	7.2%	1.22 [0.82, 1.81]	2021	
Mazighi et al 2021	67	152	69	153	9.6%	0.98 [0.76, 1.26]	2021	
Yang et al 2022	192	404	247	406	11.5%	0.78 [0.69, 0.89]	2022	
P. Upadhyaya et al 2023	28	44	27	59	7.8%	1.39 [0.97, 1.99]	2023	
Mistry et al 2023	17	37	36	76	6.8%	0.97 [0.64, 1.48]	2023	
Nam et al 2023	61	155	80	147	0.0%	0.72 [0.57, 0.92]	2023	
Total (95% CI)		2828		2268	100.0%	1.21 [1.03, 1.43]		
Total events	1447		1026					
Heterogeneity: Tau ² = 0.06; Chi ² = 58.52, df = 10 (P < 0.00001); I ² = 83%								
Test for overall effect: Z = 2.27 (P = 0.02)								



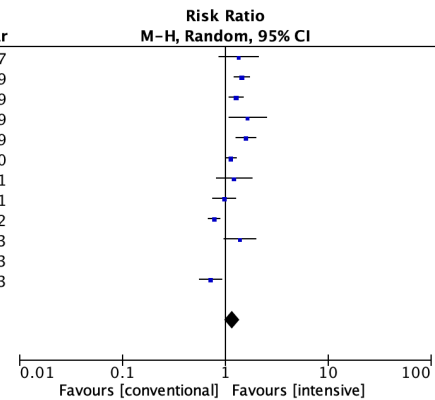
Leave out Upadhyaya et al 2023

Study or Subgroup	Intensive Management		Conventional Management		Weight	Risk Ratio		Year
	Events	Total	Events	Total		M-H, Random, 95% CI		
Goyal et al 2017	7	10	67	130	6.7%	1.36 [0.88, 2.11]	2017	
Anadani et al 2019	485	942	92	259	10.5%	1.45 [1.22, 1.73]	2019	
Cernik D et al 2019	202	376	132	314	10.7%	1.28 [1.09, 1.50]	2019	
Chang et al 2019	32	48	17	42	7.0%	1.65 [1.08, 2.50]	2019	
Eva A. Mistry et al 2019	96	179	90	267	9.9%	1.59 [1.28, 1.98]	2019	
Anadani et al 2020	283	540	222	479	11.1%	1.13 [1.00, 1.28]	2020	
Han et al 2021	38	96	27	83	7.3%	1.22 [0.82, 1.81]	2021	
Mazighi et al 2021	67	152	69	153	9.4%	0.98 [0.76, 1.26]	2021	
Yang et al 2022	192	404	247	406	11.0%	0.78 [0.69, 0.89]	2022	
P. Upadhyaya et al 2023	28	44	27	59	0.0%	1.39 [0.97, 1.99]	2023	
Mistry et al 2023	17	37	36	76	6.9%	0.97 [0.64, 1.48]	2023	
Nam et al 2023	61	155	80	147	9.5%	0.72 [0.57, 0.92]	2023	
Total (95% CI)		2939		2356	100.0%	1.14 [0.96, 1.36]		
Total events	1480		1079					
Heterogeneity: Tau ² = 0.07; Chi ² = 68.81, df = 10 (P < 0.00001); I ² = 85%								
Test for overall effect: Z = 1.49 (P = 0.13)								



Leave out Mistry et al 2023

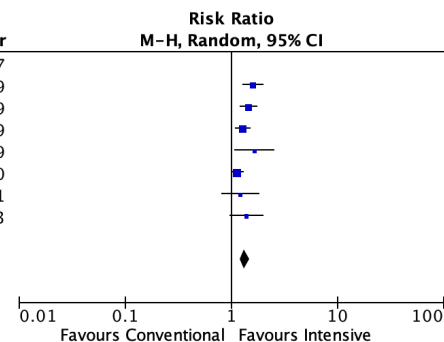
Study or Subgroup	Intensive Management		Conventional Management		Weight	Risk Ratio		Year
	Events	Total	Events	Total		M-H, Random, 95% CI		
Goyal et al 2017	7	10	67	130	6.7%	1.36 [0.88, 2.11]	2017	
Anadani et al 2019	485	942	92	259	10.4%	1.45 [1.22, 1.73]	2019	
Cernik D et al 2019	202	376	132	314	10.6%	1.28 [1.09, 1.50]	2019	
Chang et al 2019	32	48	17	42	6.9%	1.65 [1.08, 2.50]	2019	
Eva A. Mistry et al 2019	96	179	90	267	9.8%	1.59 [1.28, 1.98]	2019	
Anadani et al 2020	283	540	222	479	10.9%	1.13 [1.00, 1.28]	2020	
Han et al 2021	38	96	27	83	7.2%	1.22 [0.82, 1.81]	2021	
Mazighi et al 2021	67	152	69	153	9.3%	0.98 [0.76, 1.26]	2021	
Yang et al 2022	192	404	247	406	10.9%	0.78 [0.69, 0.89]	2022	
P. Upadhyaya et al 2023	28	44	27	59	7.8%	1.39 [0.97, 1.99]	2023	
Mistry et al 2023	17	37	36	76	0.0%	0.97 [0.64, 1.48]	2023	
Nam et al 2023	61	155	80	147	9.4%	0.72 [0.57, 0.92]	2023	
Total (95% CI)		2946		2339	100.0%	1.17 [0.99, 1.39]		
Total events	1491		1070					
Heterogeneity: Tau ² = 0.07; Chi ² = 70.12, df = 10 (P < 0.00001); I ² = 86%								
Test for overall effect: Z = 1.80 (P = 0.07)								



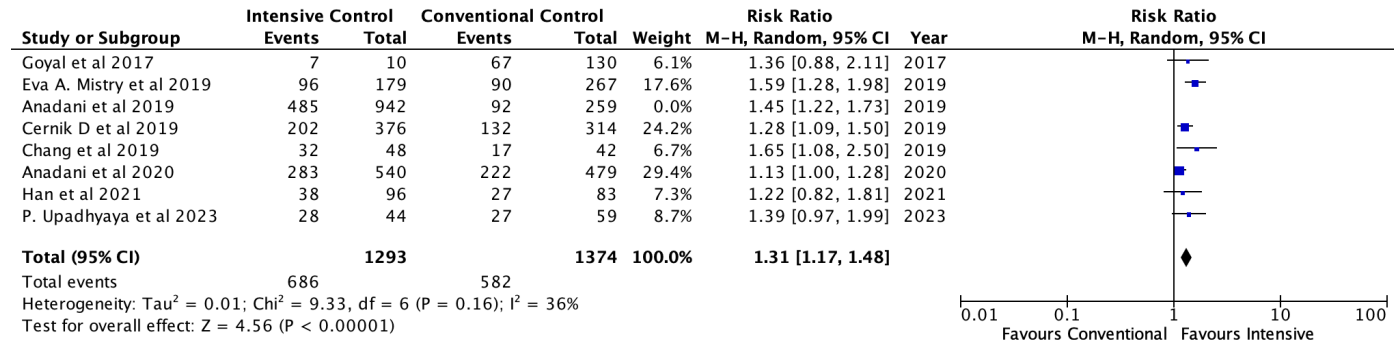
Leave out one study analysis for primary outcome of observational studies

Leave out Goyal et al 2017

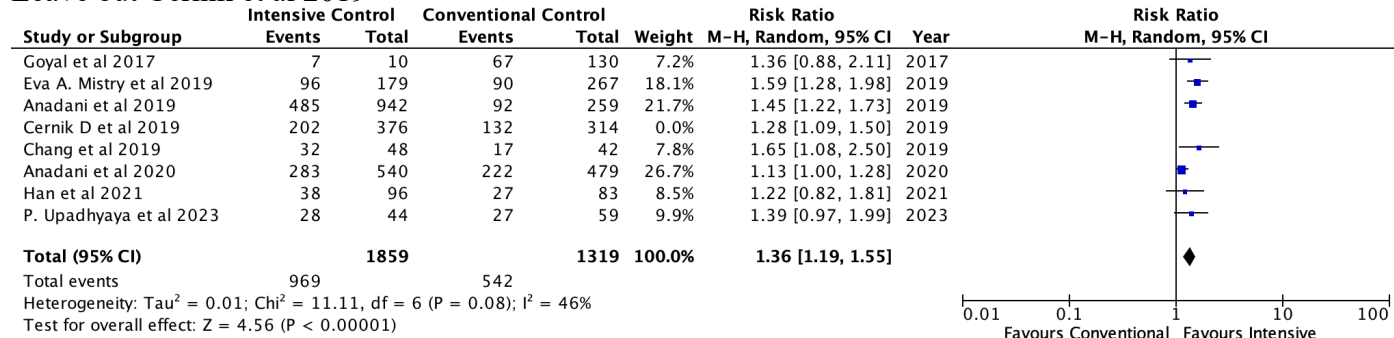
Study or Subgroup	Intensive Control		Conventional Control		Weight	Risk Ratio		Year
	Events	Total	Events	Total		M-H, Random, 95% CI		
Goyal et al 2017	7	10	67	130	0.0%	1.36 [0.88, 2.11]	2017	
Eva A. Mistry et al 2019	96	179	90	267	15.4%	1.59 [1.28, 1.98]	2019	
Anadani et al 2019	485	942	92	259	19.0%	1.45 [1.22, 1.73]	2019	
Cernik D et al 2019	202	376	132	314	20.5%	1.28 [1.09, 1.50]	2019	
Chang et al 2019	32	48	17	42	6.1%	1.65 [1.08, 2.50]	2019	
Anadani et al 2020	283	540	222	479	24.3%	1.13 [1.00, 1.28]	2020	
Han et al 2021	38	96	27	83	6.7%	1.22 [0.82, 1.81]	2021	
P. Upadhyaya et al 2023	28	44	27	59	7.9%	1.39 [0.97, 1.99]	2023	
Total (95% CI)		2225		1503	100.0%	1.34 [1.19, 1.50]		
Total events	1164		607					
Heterogeneity: Tau ² = 0.01; Chi ² = 11.13, df = 6 (P = 0.08); I ² = 46%								
Test for overall effect: Z = 5.01 (P < 0.00001)								



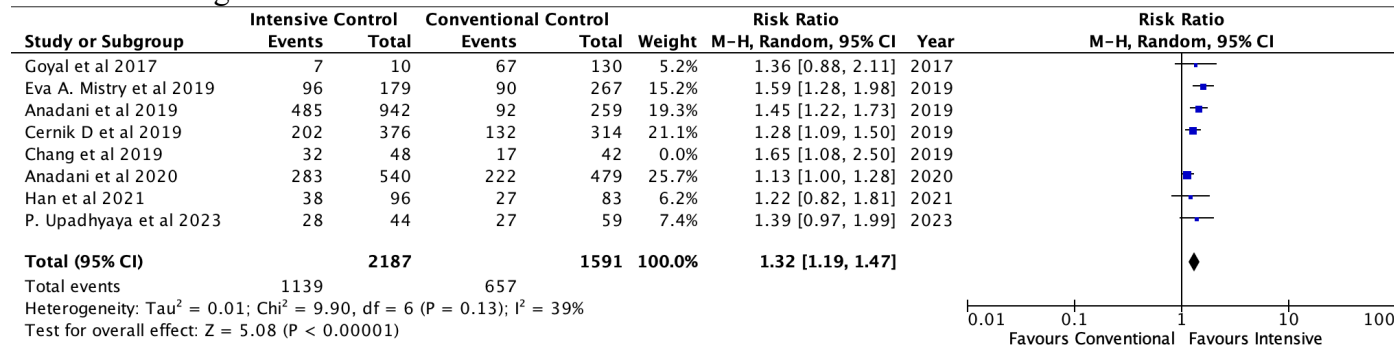
Leave out Anadani et al 2019



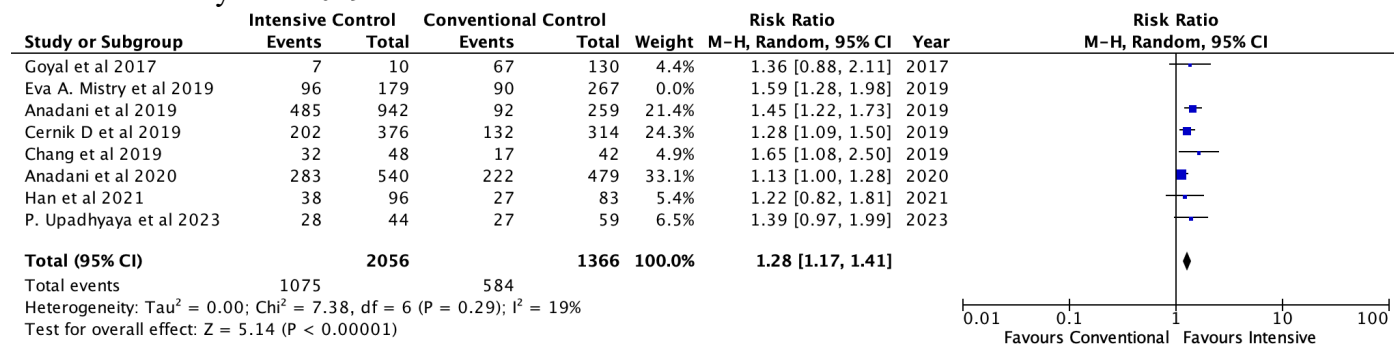
Leave out Cernik et al 2019



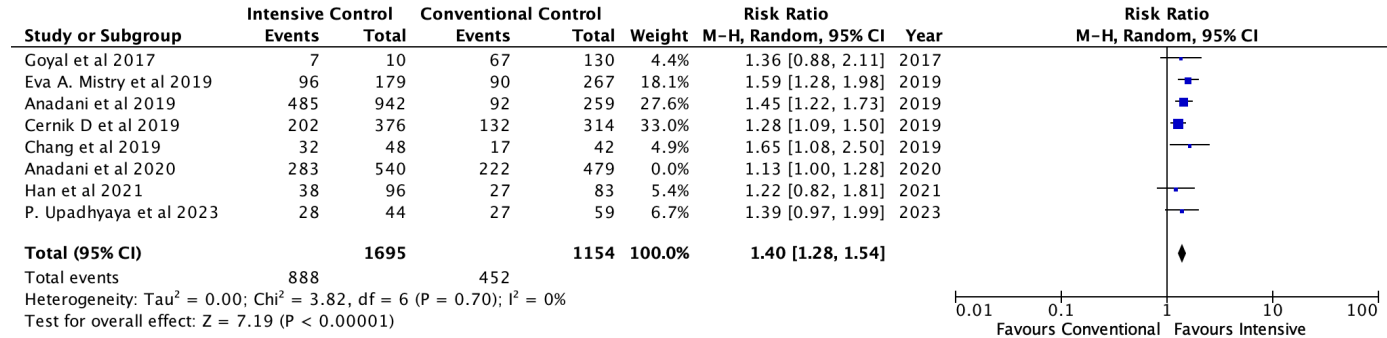
Leave out Chang et al 2019



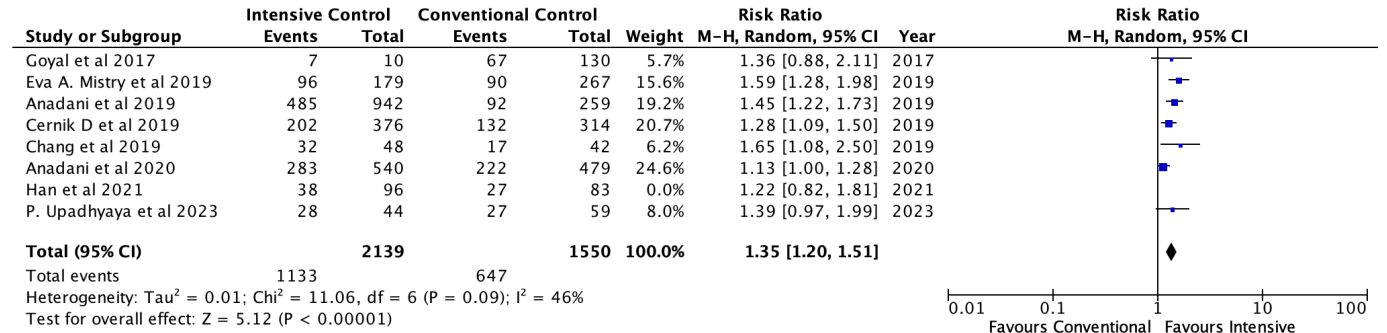
Leave out Mistry et al 2019



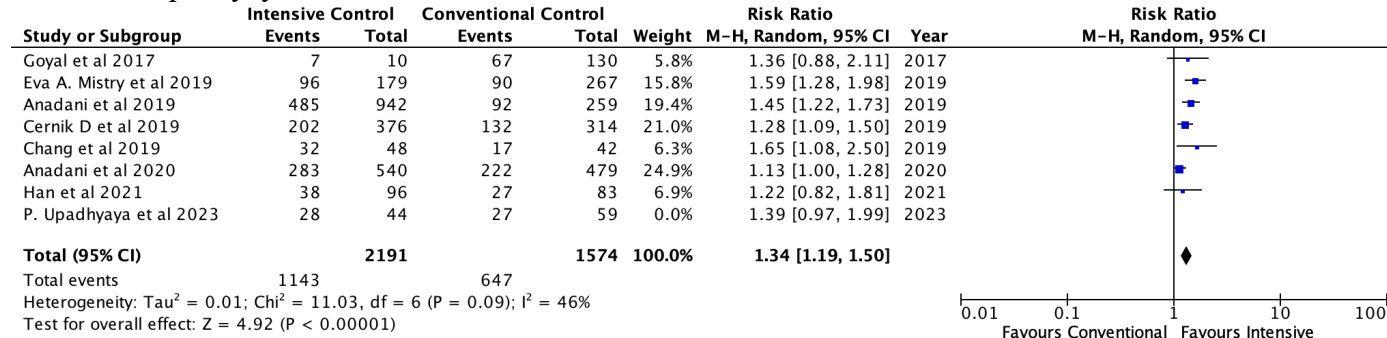
Leave out Anadani et 2020



Leave out Han et al 2021



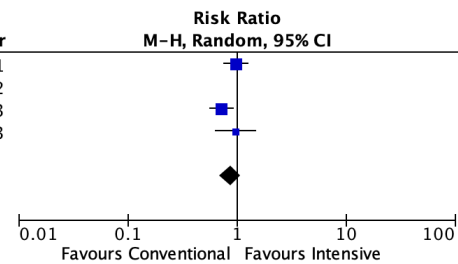
Leave out Upadhyaya et al 2023



Leave out one study analysis for RCTs

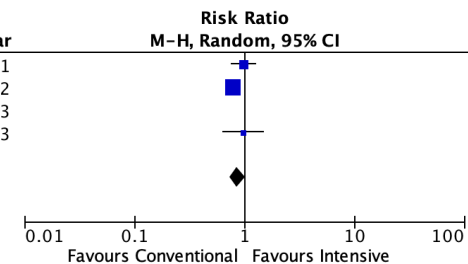
Leave out Yang et al 2022*

Study or Subgroup	Intensive Control		Conventional Control		Weight	Risk Ratio		Year
	Events	Total	Events	Total		M-H, Random, 95% CI	M-H, Random, 95% CI	
Mazighi et al 2021	67	152	69	153	39.7%	0.98 [0.76, 1.26]	2021	
Yang et al 2022	192	404	247	406	0.0%	0.78 [0.69, 0.89]	2022	
Nam et al 2023	61	155	80	147	40.6%	0.72 [0.57, 0.92]	2023	
Mistry et al 2023	17	37	36	76	19.8%	0.97 [0.64, 1.48]	2023	
Total (95% CI)		344		376	100.0%	0.86 [0.70, 1.07]		
Total events	145		185					
Heterogeneity: Tau ² = 0.01; Chi ² = 3.23, df = 2 (P = 0.20); I ² = 38%								
Test for overall effect: Z = 1.34 (P = 0.18)								



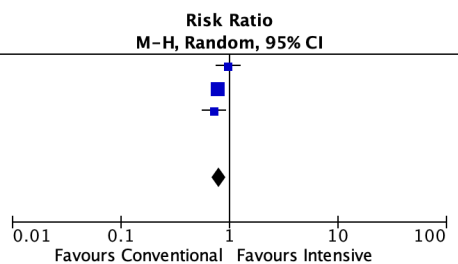
Leave out Nam et al 2023*

Study or Subgroup	Intensive Control		Conventional Control		Weight	Risk Ratio		Year
	Events	Total	Events	Total		M-H, Random, 95% CI	M-H, Random, 95% CI	
Mazighi et al 2021	67	152	69	153	29.2%	0.98 [0.76, 1.26]	2021	
Yang et al 2022	192	404	247	406	57.8%	0.78 [0.69, 0.89]	2022	
Nam et al 2023	61	155	80	147	0.0%	0.72 [0.57, 0.92]	2023	
Mistry et al 2023	17	37	36	76	13.0%	0.97 [0.64, 1.48]	2023	
Total (95% CI)		593		635	100.0%	0.86 [0.73, 1.01]		
Total events	276		352					
Heterogeneity: Tau ² = 0.01; Chi ² = 3.03, df = 2 (P = 0.22); I ² = 34%								
Test for overall effect: Z = 1.83 (P = 0.07)								



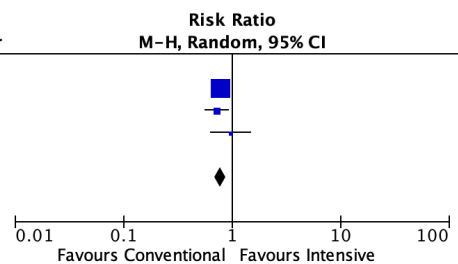
Leave out Mistry et al 2023

Study or Subgroup	Intensive Control		Conventional Control		Weight	Risk Ratio		Year
	Events	Total	Events	Total		M-H, Random, 95% CI	M-H, Random, 95% CI	
Mazighi et al 2021	67	152	69	153	24.3%	0.98 [0.76, 1.26]	2021	
Yang et al 2022	192	404	247	406	50.6%	0.78 [0.69, 0.89]	2022	
Nam et al 2023	61	155	80	147	25.0%	0.72 [0.57, 0.92]	2023	
Mistry et al 2023	17	37	36	76	0.0%	0.97 [0.64, 1.48]	2023	
Total (95% CI)		711		706	100.0%	0.81 [0.70, 0.94]		
Total events	320		396					
Heterogeneity: Tau ² = 0.01; Chi ² = 3.25, df = 2 (P = 0.20); I ² = 38%								
Test for overall effect: Z = 2.83 (P = 0.005)								



Leave out Mazighi et al 2021

Study or Subgroup	Intensive Control		Conventional Control		Weight	Risk Ratio		Year
	Events	Total	Events	Total		M-H, Random, 95% CI	M-H, Random, 95% CI	
Mazighi et al 2021	67	152	69	153	0.0%	0.98 [0.76, 1.26]	2021	
Yang et al 2022	192	404	247	406	73.0%	0.78 [0.69, 0.89]	2022	
Nam et al 2023	61	155	80	147	20.2%	0.72 [0.57, 0.92]	2023	
Mistry et al 2023	17	37	36	76	6.8%	0.97 [0.64, 1.48]	2023	
Total (95% CI)		596		629	100.0%	0.78 [0.70, 0.87]		
Total events	270		363					
Heterogeneity: Tau ² = 0.00; Chi ² = 1.39, df = 2 (P = 0.50); I ² = 0%								
Test for overall effect: Z = 4.41 (P < 0.0001)								



GRADE Summary of findings:

Intensive SBP Control compared to Conventional SBP Control for Patients with Acute Ischemic Stroke undergoing thrombectomy

Patient or population: Patients with Acute Ischemic Stroke undergoing thrombectomy

Setting: Acute ischemic Stroke undergoing thrombectomy

Intervention: Intensive SBP Control

Comparison: Conventional SBP Control

Outcomes	Anticipated absolute effects* (95% CI)		Relative effect (95% CI)	Ne of participants (studies)	Certainty of the evidence (GRADE)	Comments
	Risk with Conventional SBP Control	Risk with Intensive SBP Control				
mRS 0-2 at 90 days	413 per 1,000	549 per 1,000 (499 to 594)	RR 1.33 (1.21 to 1.44)	3868 (8 non-randomised studies)	⊕⊕⊕○ Moderate ^{a,b}	Intensive SBP Control probably results in an increased chances of mRS 0-2 at 90 days.
Death at 90 days	230 per 1,000	165 per 1,000 (133 to 202)	RR 0.72 (0.58 to 0.88)	3868 (8 non-randomised studies)	⊕⊕⊕○ Moderate ^{a,b}	Intensive SBP Control likely reduces death at 90 days.
Symptomatic ICH	75 per 1,000	47 per 1,000 (32 to 68)	RR 0.62 (0.42 to 0.90)	2642 (5 non-randomised studies)	⊕⊕○○○ Low ^{a,b,c}	Intensive SBP Control may reduce symptomatic ICH.
Decompressive hemicraniectomy	68 per 1,000	26 per 1,000 (17 to 40)	RR 0.39 (0.25 to 0.59)	2323 (3 non-randomised studies)	⊕⊕○○○ Low ^{a,b,d}	Intensive SBP Control may reduce decompressive hemicraniectomy.
mRS 0-2 at 90 days (RCTs)	552 per 1,000	459 per 1,000 (387 to 530)	RR 0.83 (0.70 to 0.96)	1530 (4 RCTs)	⊕⊕⊕○ Moderate ^e	Conventional SBP control results in improved chances of mRS 0-2 at 90 days
Death at 90 days	140 per 1,000	159 per 1,000 (125 to 202)	RR 1.13 (0.89 to 1.44)	1534 (4 RCTs)	⊕⊕⊕○ Moderate ^e	No effect on mortality at 90 days between both arms.
Symptomatic ICH	65 per 1,000	73 per 1,000 (51 to 105)	RR 1.13 (0.78 to 1.62)	1540 (4 RCTs)	⊕⊕⊕○ Moderate ^e	Neither Intensive nor conventional SBP Control result in any difference in symptomatic ICH rates.

*The risk in the intervention group (and its 95% confidence interval) is based on the assumed risk in the comparison group and the **relative effect** of the intervention (and its 95% CI).

CI: confidence interval; RR: risk ratio

GRADE Working Group grades of evidence

High certainty: we are very confident that the true effect lies close to that of the estimate of the effect.

Moderate certainty: we are moderately confident in the effect estimate: the true effect is likely to be close to the estimate of the effect, but there is a possibility that it is substantially different.

Low certainty: our confidence in the effect estimate is limited: the true effect may be substantially different from the estimate of the effect.

Very low certainty: we have very little confidence in the effect estimate: the true effect is likely to be substantially different from the estimate of effect.

Explanations

- a. Inconsistencies in BP recordings and usage of Mean SBP for defining the intensive arm. Measurement and Observational Bias possible.
- b. Cut offs used across different studies different
- c. Low event rates in Two Studies-Goyal et al only 1/10 patients in the intensive arm and in P.Upadhyaya et al only 1/44 patients had symptomatic ICH
- d. Low event rates and similar rates in P.Upadhyaya et al-1/44 in intensive arm and 1/59 in conventional arm
- e. Deviations from intended BP Control arm-Domain 2

GRADE EVIDENCE PROFILE



Author(s): Baikuntha Panigrahi, Rohit Bhatia, Partha Haldar

Question: Intensive SBP Control compared to Conventional SBP Control for Patients with Acute Ischemic Stroke undergoing thrombectomy

Setting: Acute ischemic Stroke undergoing thrombectomy

Bibliography:

Certainty assessment							№ of patients		Effect		Certainty	Importance
№ of studies	Study design	Risk of bias	Inconsistency	Indirectness	Imprecision	Other considerations	Intensive SBP Control	Conventional SBP Control	Relative (95% CI)	Absolute (95% CI)		
mRS 0-2 at 90 days												
8	non-randomised studies	serious ^{a,b}	not serious	not serious	not serious	none	1171/2235 (52.4%)	674/1633 (41.3%)	RR 1.33 (1.21 to 1.44)	136 more per 1,000 (from 87 more to 182 more)	⊕⊕⊕○ Moderate	
Death at 90 days												
8	non-randomised studies	serious ^{a,b}	not serious	not serious	not serious	none	373/2235 (16.7%)	375/1633 (23.0%)	RR 0.72 (0.58 to 0.88)	64 fewer per 1,000 (from 96 fewer to 28 fewer)	⊕⊕⊕○ Moderate	
Symptomatic ICH												
5	non-randomised studies	serious ^{a,b}	not serious	not serious	serious ^c	none	74/1632 (4.5%)	76/1010 (7.5%)	RR 0.62 (0.42 to 0.90)	29 fewer per 1,000 (from 44 fewer to 8 fewer)	⊕⊕○○ Low	
Decompressive hemicraniectomy												
3	non-randomised studies	serious ^{a,b}	not serious	not serious	serious ^d	none	43/1526 (2.8%)	54/797 (6.8%)	RR 0.39 (0.25 to 0.59)	41 fewer per 1,000 (from 51 fewer to 28 fewer)	⊕⊕○○ Low	
mRS 0-2 at 90 days (RCTs)												
4	randomised trials	serious ^e	not serious	not serious	not serious	none	337/748 (45.1%)	432/782 (55.2%)	RR 0.83 (0.70 to 0.96)	94 fewer per 1,000 (from 166 fewer to 22 fewer)	⊕⊕⊕○ Moderate	
Death at 90 days												

Certainty assessment							№ of patients		Effect		Certainty	Importance
№ of studies	Study design	Risk of bias	Inconsistency	Indirectness	Imprecision	Other considerations	Intensive SBP Control	Conventional SBP Control	Relative (95% CI)	Absolute (95% CI)		
4	randomised trials	serious ^a	not serious	not serious	not serious	none	114/750 (15.2%)	110/784 (14.0%)	RR 1.13 (0.89 to 1.44)	18 more per 1,000 (from 15 fewer to 62 more)	 Moderate	
Symptomatic ICH												
4	randomised trials	serious ^a	not serious	not serious	not serious	none	56/753 (7.4%)	51/787 (6.5%)	RR 1.13 (0.78 to 1.62)	8 more per 1,000 (from 14 fewer to 40 more)	 Moderate	

CI: confidence interval; RR: risk ratio

Explanations

- Inconsistencies in BP recordings and usage of Mean SBP for defining the intensive arm. Measurement and Observational Bias possible.
- Cut offs used across different studies different
- Low event rates in Two Studies-Goyal et al only 1/10 patients in the intensive arm and in P.Upadhyaya et al only 1/44 patients had symptomatic ICH
- Low event rates and similar rates in P.Upadhyaya et al-1/44 in intensive arm and 1/59 in conventional arm
- Deviations from intended BP Control arm-Domain 2