

# Supplementary files

<i>Supplementary file S.1. Data collection periods, waves and selected cohorts</i> .....	2
<i>Supplementary file S2. Attrition pattern in cohort 1</i> .....	3
<i>Supplementary file S.3. Attrition pattern in cohort 2</i> .....	4
<i>Supplementary file S.4. GHQ-36, density plots and cross-sectional change</i> .....	5
Figure S.4.1. GHQ-36 density plot by year in cohort 1 (including cross-sectional and inverse probability weights) .....	5
Figure S.4.2. GHQ-36 density plot by year in cohort 2 (including cross-sectional and inverse probability weights) .....	6
Figure S.4.3. Percentages of GHQ caseness based on GHQ-36 by year), financial uncertainty, financial hardship and consumer price inflation (z-axis) from 1991 to 2022 .....	7
<i>Supplementary file S.5. LGM results for cohort 1 (2016-2019)</i> .....	8
Financial hardship (cross-sectional baseline weight) .....	8
Financial hardship (cross-sectional baseline weight and ipw for attrition) .....	9
Financial uncertainty (cross-sectional baseline weight).....	10
Financial uncertainty (cross-sectional baseline weight and ipw for attrition) .....	11
Financial hardship and uncertainty (cross-sectional baseline).....	13
Financial hardship and uncertainty (cross-sectional baseline and ipw for attrition) .....	14
<i>Supplementary file S.6. LGM results for cohort 2 (2019-2022)</i> .....	16
Financial hardship (cross-sectional baseline weight) .....	16
Financial hardship (cross-sectional baseline weight and ipw for attrition) .....	17
Financial uncertainty (cross-sectional baseline weight).....	18
Financial uncertainty (cross-sectional baseline weight and ipw for attrition) .....	20
Financial hardship and uncertainty (cross-sectional baseline).....	22
Financial hardship and uncertainty (cross-sectional baseline and ipw for attrition) .....	24

## Supplementary file S.1. Data collection periods, waves and selected cohorts

Data collection	Jan 2015 - May 2017						
		Jan 2016 - May 2018					
			Jan 2017 - May 2019				
				Jan 2018 - May 2020			
					Jan 2019 - May 2021		
						Jan 2020 - May 2022	
							Jan 2021 - May 2023
Waves	<b>Wave g</b>		<b>Wave i</b>		<b>Wave j</b>		<b>Wave m</b>
		<b>Wave h</b>		<b>Wave j</b>		<b>Wave l</b>	
Cohorts	Cohort 1						
				Cohort 2			

## Supplementary file S2. Attrition pattern in cohort 1

Baseline sample: 41,855  
 Attrition in 2020: 8,466  
 Attrition in 2021: 11,897  
 Attrition in 2022: 13,564

### Ordered logit regression of attrition in subsequent waves by baseline variables

	Estimate	Std. Error	t value	Pr(> t )
<b>(Intercept)</b>	0.250	0.016	15.331	0.000
<b>FinancialHardship2016</b>	0.014	0.006	2.370	0.018
<b>FinancialUncertainty2016</b>	-0.012	0.008	-1.506	0.132
<b>ghq</b>	0.001	0.000	1.822	0.068
<b>sex_female</b>	-0.002	0.005	-0.357	0.721
<b>age</b>	-0.003	0.000	-11.785	0.000
<b>isced</b>	-0.009	0.007	-1.178	0.239
<b>country_LondonandSouthEngland</b>	0.003	0.005	0.573	0.567
<b>coupleandchildren</b>	0.012	0.007	1.749	0.080
<b>singleandchildren</b>	0.029	0.011	2.578	0.010
<b>single</b>	0.014	0.007	2.120	0.034
<b>own_mortgage</b>	-0.007	0.007	-1.018	0.309
<b>own_rent</b>	0.011	0.008	1.490	0.136
<b>save</b>	-0.022	0.005	-4.337	0.000
<b>IMD_1</b>	0.027	0.007	3.870	0.000
<b>IMD_2</b>	0.001	0.007	0.143	0.886
<b>IMD_5</b>	-0.002	0.006	-0.383	0.702
<b>empl_16_unemployed</b>	0.028	0.014	2.038	0.042
<b>empl_16_student</b>	0.021	0.012	1.772	0.076
<b>empl_16_retired</b>	0.004	0.009	0.518	0.604
<b>empl_16_self</b>	0.002	0.009	0.256	0.798
<b>empl_16_sick</b>	0.005	0.017	0.324	0.746
<b>empl_16_maternity</b>	0.003	0.011	0.237	0.813

(Dispersion parameter for gaussian family taken to be 0.1020826)

Null deviance: 1887.4 on 17859 degrees of freedom

Residual deviance: 1820.8 on 17837 degrees of freedom

## Supplementary file S.3. Attrition pattern in cohort 2

Baseline sample: 33,588  
 Attrition in 2020: 5,953  
 Attrition in 2021: 8,649  
 Attrition in 2022: 10,342

### Ordered logit regression of attrition in subsequent waves by baseline variables

	Estimate	Std. Error	t value	Pr(> t )
<b>(Intercept)</b>	0.462	0.020	23.513	0.000
<b>FinancialHardship2019</b>	0.004	0.008	0.552	0.581
<b>FinancialUncertainty2019</b>	-0.048	0.010	-4.832	0.000
<b>ghq</b>	0.002	0.001	3.181	0.001
<b>sex_female</b>	-0.031	0.007	-4.644	0.000
<b>age</b>	-0.003	0.000	-11.355	0.000
<b>iscd</b>	-0.017	0.010	-1.701	0.089
<b>country_LondonandSouthEngland</b>	-0.002	0.007	-0.301	0.764
<b>coupleandchildren</b>	0.048	0.009	5.617	0.000
<b>singleandchildren</b>	0.117	0.014	8.260	0.000
<b>single</b>	0.042	0.009	4.763	0.000
<b>own_mortgage</b>	0.009	0.009	0.964	0.335
<b>own_rent</b>	0.093	0.010	9.431	0.000
<b>save</b>	-0.066	0.007	-9.539	0.000
<b>IMD_1</b>	0.060	0.009	6.495	0.000
<b>IMD_2</b>	0.027	0.009	2.999	0.003
<b>IMD_5</b>	-0.046	0.009	-5.249	0.000
<b>empl_unemployed</b>	0.075	0.018	4.210	0.000
<b>empl_student</b>	0.070	0.015	4.608	0.000
<b>empl_retired</b>	0.078	0.012	6.607	0.000
<b>empl_self</b>	0.049	0.012	4.022	0.000
<b>empl_sick</b>	0.018	0.020	0.862	0.388
<b>empl_maternity</b>	0.048	0.017	2.917	0.004

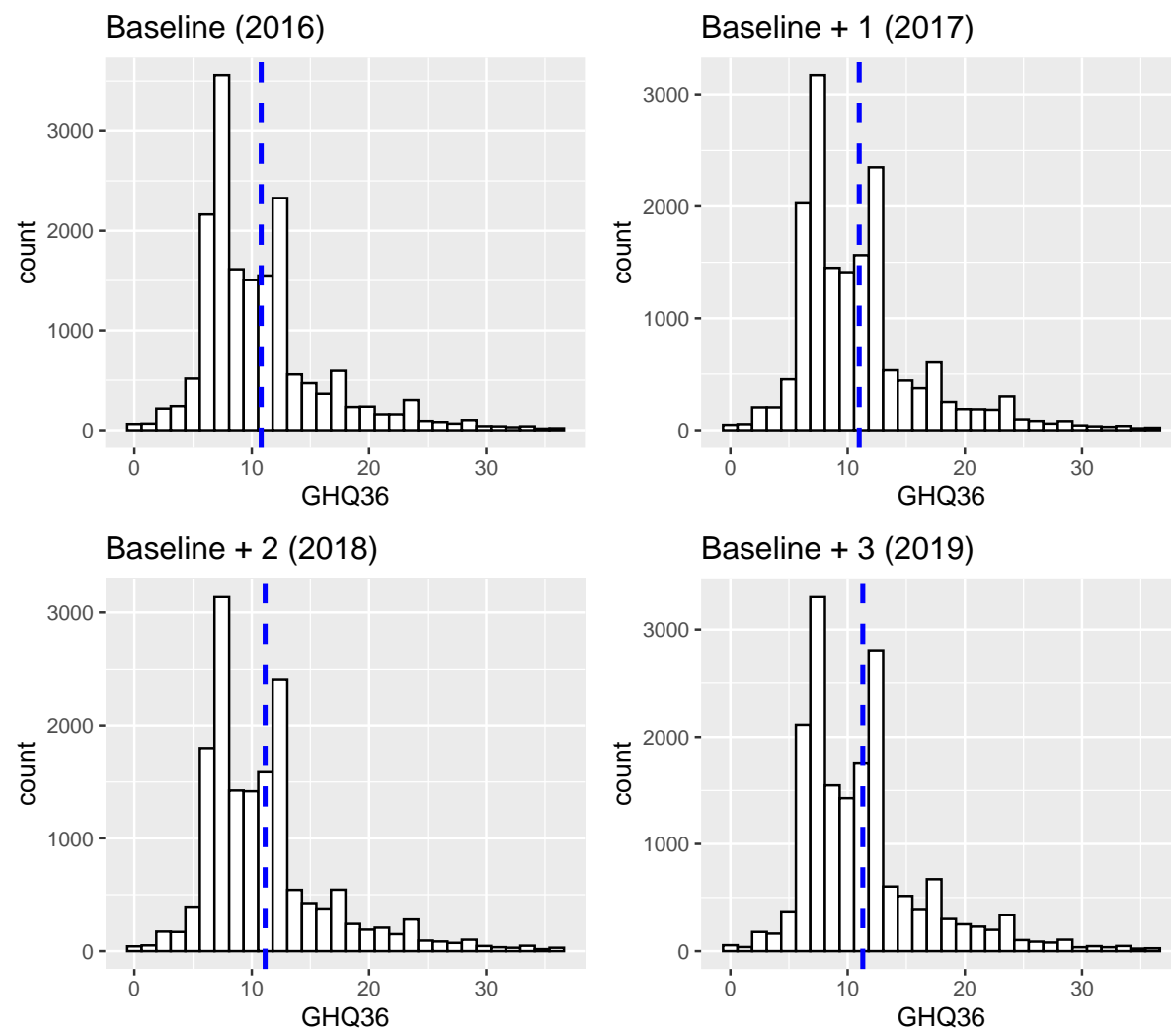
(Dispersion parameter for gaussian family taken to be 0.2167649)

Null deviance: 4971.5 on 21482 degrees of freedom

Residual deviance: 4651.8 on 21460 degrees of freedom

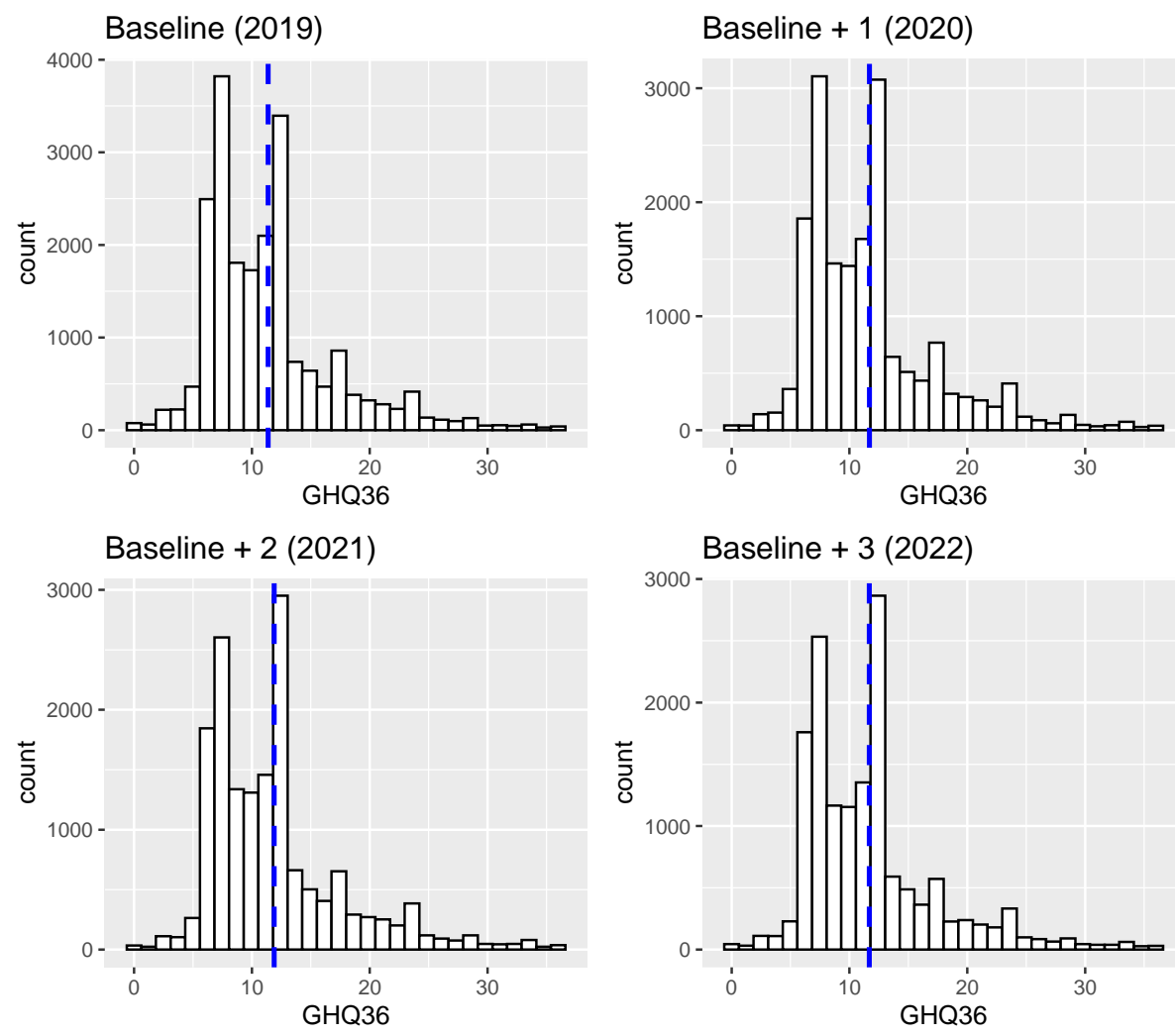
## Supplementary file S.4. GHQ-36, density plots and cross-sectional change

Figure S.4.1. GHQ-36 density plot by year in cohort 1 (including cross-sectional and inverse probability weights)



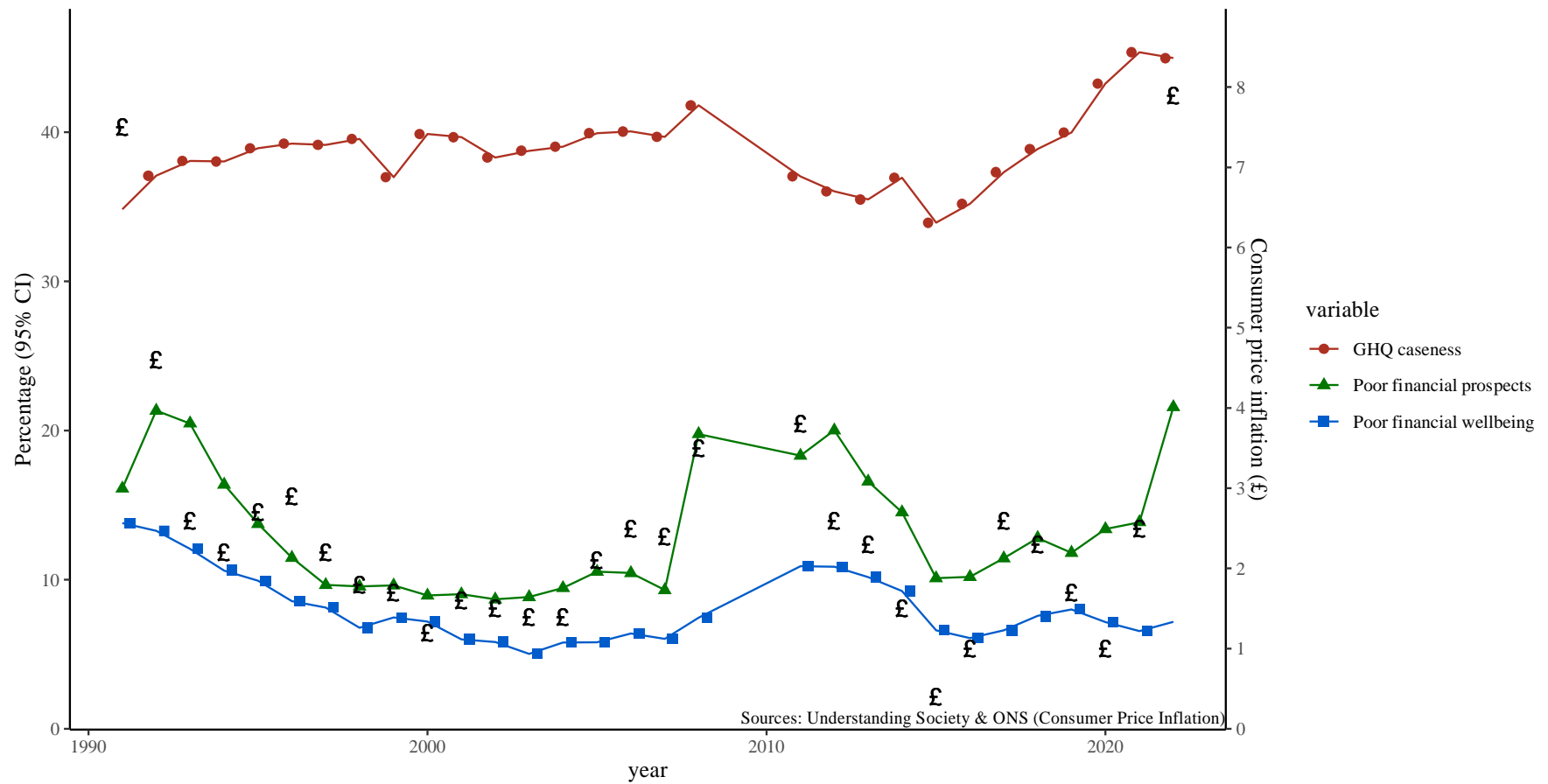
time	GHQ-36 means
1 2016.	10.80600
2 2017	10.99273
3 2018	11.14514
4 2019	11.28897

Figure S.4.2. GHQ-36 density plot by year in cohort 2 (including cross-sectional and inverse probability weights)



time	GHQ-36 means
2019	11.37476
2020	11.69447
2021	11.88569
2022	11.68791

Figure S.4.3. Percentages of GHQ caseness based on GHQ-36 by year), financial uncertainty, financial hardship and consumer price inflation (z-axis) from 1991 to 2022



Note: Percentages and 95%CI calculated yearly based on the combination of the British Household Panel Survey (BHPS) and the UK Longitudinal Survey (UKHLS) for the full population aged 16 and over. GHQ-caseness is calculated based on GHQ-36 with a cut-point at 9. The consumer price inflation is derived from Office for National Statistics (2024). Ref.: Office for National Statistics. Consumer price inflation time series. Published 2024. Accessed January 3, 2024. <https://www.ons.gov.uk/economy/inflationandpriceindices/datasets/consumerpriceindices>. Data are weighted using USoc-provided yearly cross-sectional weights.

Supplementary file S.5. LGM results for cohort 1 (2016-2019)

<b>Financial hardship (cross-sectional baseline weight)</b>																
term	Employment adjustment				Socio-economic adjustment				Demographic adjustment				Unadjusted			
	Estimate	SE	CI lower	CI upper	Estimate	SE	CI lower	CI upper	Estimate	SE	CI lower	CI upper	Estimate	SE	CI lower	CI upper
ghq_16 ~ ghq_16	11.957	0.468	11.039	12.875	11.979	0.472	11.054	12.904	11.854	0.431	11.010	12.698	11.722	0.399	10.940	12.504
ghq_17 ~ ghq_17	12.924	0.383	12.173	13.674	12.896	0.382	12.147	13.646	13.273	0.370	12.548	13.997	13.062	0.343	12.389	13.734
ghq_18 ~ ghq_18	13.419	0.391	12.652	14.186	13.434	0.393	12.663	14.205	13.113	0.349	12.428	13.798	13.037	0.323	12.404	13.670
ghq_19 ~ ghq_19	11.529	0.471	10.606	12.452	11.525	0.476	10.592	12.458	11.483	0.431	10.637	12.329	11.305	0.399	10.524	12.087
i ~ age	-0.010	0.005	-0.019	0.000	-0.015	0.004	-0.022	-0.008	-0.020	0.003	-0.025	-0.014				
i ~ country_LondonandSouthEngland	-0.065	0.097	-0.256	0.126	-0.085	0.100	-0.280	0.110	-0.090	0.094	-0.275	0.094				
i ~ coupleandchildren	-0.310	0.129	-0.564	-0.056	-0.373	0.131	-0.629	-0.116	-0.343	0.116	-0.570	-0.116				
i ~ empl_16_maternity	0.514	0.268	-0.012	1.040												
i ~ empl_16_retired	-0.253	0.145	-0.537	0.032												
i ~ empl_16_self	-0.270	0.154	-0.571	0.032												
i ~ empl_16_sick	5.179	0.461	4.276	6.082												
i ~ empl_16_student	0.171	0.266	-0.350	0.692												
i ~ empl_16_unemployed	1.002	0.359	0.300	1.705												
i ~ empl_maternity	0.113	0.317	-0.509	0.735	0.346	0.310	-0.260	0.953	0.394	0.279	-0.152	0.941				
i ~ FinancialHardship2016	2.378	0.138	2.108	2.648	2.670	0.140	2.395	2.945	2.974	0.126	2.727	3.222	3.169	0.117	2.940	3.399
i ~ IMD_1	-0.155	0.180	-0.507	0.197	0.024	0.184	-0.338	0.385								
i ~ IMD_2	-0.037	0.157	-0.345	0.271	-0.022	0.159	-0.334	0.289								
i ~ IMD_4	-0.165	0.139	-0.436	0.107	-0.185	0.142	-0.463	0.093								
i ~ IMD_5	-0.229	0.134	-0.492	0.034	-0.225	0.136	-0.490	0.041								
i ~ isced	0.361	0.130	0.107	0.615	0.296	0.130	0.040	0.552	0.161	0.120	-0.075	0.397				
i ~ own_mortgage	0.175	0.123	-0.066	0.415	0.229	0.120	-0.007	0.465								
i ~ own_rent	0.438	0.156	0.133	0.743	0.738	0.157	0.430	1.047								
i ~ save	-0.177	0.098	-0.370	0.016	-0.259	0.100	-0.454	-0.064								
i ~ sex_female	0.997	0.097	0.808	1.187	0.989	0.099	0.795	1.182	1.024	0.090	0.848	1.201				
i ~ single	0.402	0.127	0.152	0.652	0.568	0.132	0.310	0.826	0.697	0.119	0.464	0.930				
i ~ singleandchildren	0.169	0.283	-0.387	0.724	0.053	0.285	-0.507	0.612	0.356	0.261	-0.155	0.867				
i ~ i	13.932	0.491	12.970	14.893	14.897	0.518	13.882	15.911	15.119	0.480	14.178	16.061	15.608	0.454	14.718	16.498
i ~ s	-0.965	0.160	-1.279	-0.651	-0.976	0.163	-1.295	-0.657	-1.051	0.151	-1.347	-0.756	-1.008	0.140	-1.283	-0.733
s ~ age	-0.006	0.002	-0.010	-0.002	-0.005	0.001	-0.008	-0.003	-0.004	0.001	-0.006	-0.002				
s ~ country_LondonandSouthEngland	0.060	0.036	-0.011	0.131	0.053	0.036	-0.018	0.125	0.063	0.034	-0.004	0.131				
s ~ coupleandchildren	0.053	0.050	-0.046	0.152	0.026	0.050	-0.072	0.124	0.038	0.044	-0.048	0.125				
s ~ empl_17_maternity	-0.468	0.118	-0.699	-0.237												
s ~ empl_17_retired	0.011	0.088	-0.162	0.184												
s ~ empl_17_self	-0.105	0.093	-0.287	0.077												
s ~ empl_17_sick	-0.799	0.216	-1.223	-0.376												
s ~ empl_17_student	-0.091	0.132	-0.350	0.169												
s ~ empl_17_unemployed	-0.502	0.134	-0.765	-0.240												
s ~ empl_18_maternity	0.284	0.124	0.042	0.526												
s ~ empl_18_retired	0.050	0.098	-0.142	0.243												
s ~ empl_18_self	0.119	0.117	-0.110	0.347												
s ~ empl_18_sick	-0.055	0.223	-0.492	0.383												
s ~ empl_18_student	0.225	0.170	-0.107	0.558												
s ~ empl_18_unemployed	0.509	0.156	0.203	0.816												
s ~ empl_maternity	0.102	0.129	-0.152	0.355	-0.030	0.099	-0.223	0.164	-0.009	0.089	-0.183	0.165				
s ~ empl_retired	0.004	0.086	-0.163	0.172												
s ~ empl_self	-0.010	0.100	-0.207	0.187												
s ~ empl_sick	1.444	0.215	1.022	1.865												
s ~ empl_student	-0.274	0.161	-0.589	0.040												
s ~ empl_unemployed	0.381	0.148	0.091	0.672												



s ~ FinancialHardship2016	-0.654	0.056	-0.764	-0.544	-0.651	0.056	-0.762	-0.541	-0.672	0.051	-0.772	-0.572	-0.671	0.047	-0.763	-0.579
s ~ FinancialHardship2017to2019_Constant_hardship	0.870	0.066	0.741	1.000	0.927	0.068	0.794	1.060	0.981	0.062	0.860	1.103	1.013	0.057	0.901	1.124
s ~ FinancialHardship2017to2019_b+3 hardship	0.740	0.086	0.572	0.907	0.765	0.087	0.595	0.936	0.729	0.077	0.578	0.880	0.782	0.072	0.640	0.924
s ~ FinancialHardship2017to2019_b+1 and b+3 hardship	0.463	0.105	0.258	0.668	0.531	0.101	0.332	0.729	0.559	0.091	0.380	0.737	0.632	0.087	0.462	0.803
s ~ FinancialHardship2017to2019_b+1 hardship	0.119	0.065	-0.009	0.246	0.097	0.066	-0.032	0.226	0.101	0.059	-0.016	0.217	0.142	0.054	0.035	0.249
s ~ FinancialHardship2017to2019_b+1 and b+2 hardship	0.222	0.093	0.040	0.403	0.234	0.094	0.049	0.420	0.261	0.084	0.096	0.427	0.289	0.078	0.137	0.442
s ~ FinancialHardship2017to2019_b+2 and b+3 hardship	0.803	0.082	0.642	0.963	0.872	0.085	0.706	1.039	0.949	0.078	0.796	1.102	1.002	0.074	0.857	1.147
s ~ FinancialHardship2017to2019_b+2 hardship	0.394	0.070	0.257	0.531	0.428	0.067	0.296	0.560	0.420	0.061	0.300	0.539	0.466	0.057	0.354	0.578
s ~ IMD_1	-0.010	0.062	-0.133	0.112	0.007	0.063	-0.117	0.131								
s ~ IMD_2	-0.020	0.056	-0.130	0.090	-0.019	0.056	-0.130	0.091								
s ~ IMD_4	0.077	0.051	-0.023	0.177	0.075	0.051	-0.025	0.176								
s ~ IMD_5	0.063	0.050	-0.034	0.161	0.061	0.050	-0.036	0.159								
s ~ isced	-0.141	0.048	-0.235	-0.047	-0.133	0.049	-0.228	-0.038	-0.135	0.047	-0.227	-0.043				
s ~ own_mortgage	-0.029	0.046	-0.120	0.062	-0.039	0.045	-0.127	0.050								
s ~ own_rent	-0.012	0.057	-0.124	0.100	0.016	0.057	-0.095	0.128								
s ~ save	-0.046	0.036	-0.117	0.025	-0.057	0.036	-0.128	0.013								
s ~ sex_female	-0.055	0.035	-0.124	0.015	-0.061	0.036	-0.130	0.009	-0.057	0.033	-0.121	0.006				
s ~ single	-0.077	0.046	-0.167	0.014	-0.054	0.046	-0.145	0.036	-0.043	0.041	-0.124	0.038				
s ~ singleandchildren	-0.033	0.102	-0.233	0.168	-0.063	0.102	-0.263	0.137	-0.030	0.093	-0.212	0.152				
s ~ s	0.681	0.086	0.513	0.848	0.712	0.087	0.542	0.883	0.750	0.080	0.592	0.907	0.741	0.075	0.595	0.887

## Financial hardship (cross-sectional baseline weight and ipw for attrition)

term	Employment adjustment				Socio-economic adjustment				Demographic adjustment				Unadjusted			
	Estimate	SE	CI lower	CI upper	Estimate	SE	CI lower	CI upper	Estimate	SE	CI lower	CI upper	Estimate	SE	CI lower	CI upper
ghq_16 ~ ghq_16	12.033	0.491	11.071	12.994	12.065	0.494	11.096	13.034	12.066	0.496	11.095	13.038	12.103	0.499	11.124	13.082
ghq_17 ~ ghq_17	13.186	0.407	12.389	13.983	13.150	0.406	12.355	13.946	13.144	0.406	12.348	13.940	13.120	0.407	12.322	13.918
ghq_18 ~ ghq_18	13.694	0.418	12.875	14.513	13.700	0.420	12.877	14.522	13.701	0.421	12.876	14.526	13.694	0.421	12.867	14.520
ghq_19 ~ ghq_19	11.885	0.499	10.907	12.864	11.910	0.507	10.915	12.904	11.919	0.511	10.919	12.920	11.939	0.517	10.926	12.952
i ~ age	-0.009	0.005	-0.019	0.001	-0.014	0.004	-0.022	-0.007	-0.019	0.003	-0.026	-0.012				
i ~ country_LondonandSouthEngland	-0.099	0.101	-0.297	0.098	-0.114	0.103	-0.317	0.088	-0.138	0.104	-0.342	0.065				
i ~ coupleandchildren	-0.324	0.134	-0.587	-0.062	-0.382	0.135	-0.647	-0.118	-0.310	0.130	-0.566	-0.054				
i ~ empl_16_maternity	0.485	0.281	-0.065	1.035												
i ~ empl_16_retired	-0.280	0.149	-0.571	0.011												
i ~ empl_16_self	-0.236	0.157	-0.544	0.072												
i ~ empl_16_sick	5.240	0.479	4.302	6.179												
i ~ empl_16_student	0.214	0.269	-0.314	0.742												
i ~ empl_16_unemployed	0.969	0.378	0.228	1.710												
i ~ empl_maternity	0.143	0.334	-0.512	0.799	0.360	0.326	-0.280	0.999	0.494	0.324	-0.142	1.130				
i ~ FinancialHardship2016	2.389	0.143	2.109	2.669	2.676	0.145	2.391	2.961	2.932	0.143	2.652	3.212	3.085	0.143	2.805	3.365
i ~ IMD_1	-0.116	0.186	-0.480	0.247	0.070	0.191	-0.304	0.443								
i ~ IMD_2	0.026	0.162	-0.292	0.344	0.036	0.164	-0.286	0.357								
i ~ IMD_4	-0.150	0.143	-0.430	0.130	-0.176	0.146	-0.463	0.111								
i ~ IMD_5	-0.205	0.138	-0.476	0.066	-0.201	0.140	-0.475	0.073								
i ~ isced	0.369	0.134	0.106	0.631	0.304	0.135	0.040	0.568	0.198	0.134	-0.065	0.462				
i ~ own_mortgage	0.165	0.126	-0.083	0.412	0.230	0.124	-0.013	0.472								
i ~ own_rent	0.441	0.159	0.129	0.752	0.745	0.161	0.430	1.061								
i ~ save	-0.134	0.102	-0.335	0.067	-0.219	0.104	-0.422	-0.016								
i ~ sex_female	1.023	0.101	0.826	1.221	1.007	0.103	0.806	1.209	1.007	0.103	0.805	1.209				
i ~ single	0.353	0.132	0.094	0.612	0.527	0.137	0.258	0.797	0.730	0.138	0.459	1.001				
i ~ singleandchildren	0.140	0.294	-0.437	0.716	0.022	0.297	-0.559	0.604	0.298	0.294	-0.279	0.875				
i ~ i	14.075	0.517	13.061	15.089	15.057	0.548	13.984	16.131	15.169	0.553	14.084	16.254	15.665	0.567	14.554	16.777
i ~ s	-0.973	0.168	-1.302	-0.644	-0.972	0.171	-1.308	-0.637	-0.983	0.172	-1.320	-0.646	-0.994	0.174	-1.334	-0.654
s ~ age	-0.007	0.002	-0.010	-0.003	-0.006	0.001	-0.008	-0.003	-0.005	0.001	-0.008	-0.003				
s ~ country_LondonandSouthEngland	0.075	0.038	0.001	0.148	0.068	0.038	-0.007	0.142	0.070	0.038	-0.004	0.144				
s ~ coupleandchildren	0.052	0.052	-0.051	0.154	0.021	0.052	-0.080	0.123	0.015	0.050	-0.084	0.114				
s ~ empl_17_maternity	-0.504	0.123	-0.745	-0.262												
s ~ empl_17_retired	-0.003	0.090	-0.179	0.174												

s ~ empl_17_self	-0.105	0.094	-0.288	0.079													
s ~ empl_17_sick	-0.814	0.226	-1.258	-0.371													
s ~ empl_17_student	-0.095	0.136	-0.361	0.171													
s ~ empl_17_unemployed	-0.519	0.143	-0.800	-0.239													
s ~ empl_18_maternity	0.253	0.128	0.002	0.504													
s ~ empl_18_retired	0.072	0.100	-0.124	0.269													
s ~ empl_18_self	0.101	0.124	-0.142	0.344													
s ~ empl_18_sick	-0.125	0.238	-0.591	0.341													
s ~ empl_18_student	0.227	0.176	-0.118	0.571													
s ~ empl_18_unemployed	0.537	0.168	0.208	0.867													
s ~ empl_maternity	0.147	0.135	-0.118	0.413	-0.017	0.105	-0.222	0.188	-0.006	0.104	-0.210	0.198					
s ~ empl_retired	-0.003	0.086	-0.172	0.166													
s ~ empl_self	-0.014	0.105	-0.221	0.193													
s ~ empl_sick	1.534	0.228	1.087	1.981													
s ~ empl_student	-0.304	0.166	-0.630	0.022													
s ~ empl_unemployed	0.368	0.155	0.065	0.671													
s ~ FinancialHardship2016	-0.662	0.058	-0.776	-0.547	-0.658	0.059	-0.773	-0.543	-0.674	0.058	-0.787	-0.561	-0.690	0.058	-0.803	-0.576	
s ~ FinancialHardship2017to2019_Constant_hardship	0.891	0.068	0.757	1.025	0.950	0.070	0.812	1.088	1.021	0.071	0.883	1.159	1.068	0.071	0.929	1.207	
s ~ FinancialHardship2017to2019_b+3 hardship	0.735	0.088	0.564	0.907	0.763	0.089	0.588	0.938	0.808	0.089	0.633	0.982	0.894	0.090	0.719	1.070	
s ~ FinancialHardship2017to2019_b+1 and b+3 hardship	0.502	0.111	0.284	0.721	0.567	0.108	0.355	0.779	0.629	0.108	0.417	0.840	0.686	0.110	0.469	0.902	
s ~ FinancialHardship2017to2019_b+1 hardship	0.109	0.066	-0.021	0.239	0.081	0.067	-0.051	0.212	0.118	0.067	-0.013	0.249	0.163	0.066	0.034	0.292	
s ~ FinancialHardship2017to2019_b+1 and b+2 hardship	0.269	0.096	0.082	0.457	0.284	0.097	0.094	0.474	0.316	0.097	0.126	0.506	0.366	0.097	0.176	0.557	
s ~ FinancialHardship2017to2019_b+2 and b+3 hardship	0.817	0.085	0.649	0.984	0.891	0.089	0.717	1.065	0.951	0.089	0.777	1.124	1.020	0.089	0.845	1.194	
s ~ FinancialHardship2017to2019_b+2 hardship	0.400	0.073	0.257	0.543	0.436	0.070	0.299	0.573	0.474	0.070	0.337	0.611	0.518	0.069	0.381	0.654	
s ~ IMD_1	-0.012	0.064	-0.138	0.114	0.006	0.065	-0.121	0.133									
s ~ IMD_2	-0.025	0.059	-0.140	0.090	-0.026	0.059	-0.141	0.090									
s ~ IMD_4	0.085	0.053	-0.019	0.190	0.083	0.053	-0.022	0.187									
s ~ IMD_5	0.065	0.051	-0.035	0.166	0.062	0.051	-0.039	0.163									
s ~ isced	-0.144	0.050	-0.241	-0.046	-0.135	0.050	-0.234	-0.036	-0.139	0.050	-0.237	-0.040					
s ~ own_mortgage	-0.031	0.048	-0.125	0.062	-0.037	0.047	-0.129	0.054									
s ~ own_rent	0.001	0.059	-0.114	0.116	0.033	0.058	-0.081	0.148									
s ~ save	-0.059	0.038	-0.133	0.016	-0.070	0.038	-0.143	0.004									
s ~ sex_female	-0.064	0.037	-0.136	0.009	-0.073	0.037	-0.146	0.000	-0.070	0.037	-0.143	0.003					
s ~ single	-0.064	0.048	-0.158	0.031	-0.035	0.048	-0.129	0.059	-0.035	0.048	-0.128	0.059					
s ~ singleandchildren	-0.024	0.105	-0.231	0.183	-0.062	0.105	-0.268	0.144	-0.061	0.105	-0.267	0.144					
s ~ s	0.681	0.090	0.505	0.858	0.712	0.092	0.532	0.893	0.720	0.092	0.539	0.901	0.732	0.094	0.548	0.915	

### Financial uncertainty (cross-sectional baseline weight)

term	Employment adjustment				Socio-economic adjustment				Demographic adjustment				Unadjusted			
	Estimate	SE	CI lower	CI upper	Estimate	SE	CI lower	CI upper	Estimate	SE	CI lower	CI upper	Estimate	SE	CI lower	CI upper
ghq_16 ~ ghq_16	11.650	0.479	10.711	12.588	11.670	0.481	10.727	12.613	11.579	0.442	10.714	12.444	11.464	0.410	10.661	12.267
ghq_17 ~ ghq_17	12.816	0.393	12.046	13.587	12.788	0.393	12.018	13.557	13.157	0.383	12.406	13.907	12.958	0.356	12.261	13.655
ghq_18 ~ ghq_18	13.261	0.400	12.477	14.045	13.270	0.402	12.483	14.057	12.949	0.359	12.246	13.653	12.887	0.333	12.233	13.540
ghq_19 ~ ghq_19	11.401	0.483	10.455	12.347	11.415	0.488	10.459	12.371	11.367	0.445	10.494	12.239	11.231	0.415	10.418	12.044
i ~ age	-0.008	0.005	-0.017	0.002	-0.015	0.004	-0.023	-0.008	-0.024	0.003	-0.030	-0.018				
i ~ country_LondonandSouthEngland	-0.048	0.099	-0.243	0.147	-0.061	0.102	-0.260	0.139	-0.072	0.097	-0.263	0.119				
i ~ coupleandchildren	-0.215	0.134	-0.478	0.047	-0.250	0.135	-0.515	0.015	-0.111	0.120	-0.346	0.124				
i ~ empl_16_maternity	0.615	0.278	0.070	1.161												
i ~ empl_16_retired	-0.432	0.149	-0.724	-0.140												
i ~ empl_16_self	-0.165	0.156	-0.471	0.140												
i ~ empl_16_sick	5.557	0.504	4.569	6.545												
i ~ empl_16_student	0.157	0.278	-0.388	0.702												
i ~ empl_16_unemployed	1.266	0.371	0.539	1.993												
i ~ empl_maternity	0.081	0.319	-0.544	0.705	0.377	0.305	-0.220	0.975	0.569	0.273	0.034	1.104				
i ~ FinancialUncertainty2016	1.725	0.177	1.379	2.071	1.904	0.183	1.544	2.263	1.931	0.172	1.593	2.268	2.003	0.164	1.682	2.325
i ~ IMD_1	0.093	0.183	-0.265	0.451	0.304	0.188	-0.065	0.673								
i ~ IMD_2	0.104	0.161	-0.211	0.419	0.125	0.163	-0.195	0.446								
i ~ IMD_4	-0.156	0.140	-0.431	0.118	-0.190	0.144	-0.472	0.092								

i ~ IMD_5	-0.242	0.136	-0.508	0.024	-0.252	0.138	-0.522	0.019									
i ~ isced	0.267	0.133	0.006	0.528	0.184	0.134	-0.079	0.447	-0.107	0.125	-0.352	0.137					
i ~ own_mortgage	0.353	0.125	0.107	0.598	0.469	0.123	0.227	0.711									
i ~ own_rent	0.922	0.161	0.606	1.237	1.329	0.165	1.006	1.652									
i ~ save	-0.417	0.100	-0.612	-0.222	-0.550	0.101	-0.748	-0.353									
i ~ sex_female	0.969	0.099	0.774	1.164	0.943	0.102	0.744	1.143	0.979	0.094	0.795	1.163					
i ~ single	0.450	0.131	0.193	0.706	0.645	0.136	0.378	0.912	0.983	0.126	0.735	1.230					
i ~ singleandchildren	0.445	0.292	-0.128	1.017	0.370	0.294	-0.205	0.946	1.027	0.264	0.509	1.545					
i ~ i	14.229	0.512	13.226	15.231	15.329	0.548	14.255	16.403	15.914	0.523	14.890	16.939	16.657	0.501	15.675	17.639	
i ~ s	-1.054	0.165	-1.377	-0.731	-1.071	0.168	-1.401	-0.741	-1.086	0.157	-1.394	-0.778	-0.979	0.147	-1.266	-0.692	
s ~ age	-0.008	0.002	-0.011	-0.004	-0.007	0.001	-0.010	-0.004	-0.006	0.001	-0.009	-0.004					
s ~ country_LondonandSouthEngland	0.069	0.037	-0.003	0.141	0.064	0.037	-0.009	0.136	0.068	0.035	-0.001	0.136					
s ~ coupleandchildren	0.083	0.051	-0.017	0.183	0.059	0.051	-0.040	0.159	0.086	0.045	-0.001	0.174					
s ~ empl_17_maternity	-0.487	0.123	-0.728	-0.247													
s ~ empl_17_retired	0.081	0.090	-0.094	0.257													
s ~ empl_17_self	-0.054	0.093	-0.237	0.129													
s ~ empl_17_sick	-0.775	0.219	-1.205	-0.346													
s ~ empl_17_student	-0.055	0.143	-0.334	0.224													
s ~ empl_17_unemployed	-0.512	0.139	-0.784	-0.239													
s ~ empl_18_maternity	0.294	0.130	0.040	0.548													
s ~ empl_18_retired	0.036	0.100	-0.160	0.231													
s ~ empl_18_self	0.103	0.121	-0.134	0.341													
s ~ empl_18_sick	0.016	0.233	-0.441	0.474													
s ~ empl_18_student	0.133	0.182	-0.224	0.490													
s ~ empl_18_unemployed	0.552	0.166	0.227	0.877													
s ~ empl_maternity	0.063	0.132	-0.196	0.322	-0.057	0.101	-0.256	0.142	-0.007	0.091	-0.184	0.171					
s ~ empl_retired	-0.079	0.086	-0.248	0.089													
s ~ empl_self	-0.040	0.101	-0.238	0.159													
s ~ empl_sick	1.311	0.238	0.845	1.777													
s ~ empl_student	-0.324	0.172	-0.660	0.013													
s ~ empl_unemployed	0.448	0.157	0.141	0.756													
s ~ FinancialUncertainty2016	-0.322	0.063	-0.446	-0.199	-0.322	0.062	-0.444	-0.199	-0.301	0.057	-0.414	-0.189	-0.316	0.053	-0.420	-0.211	
s ~ FinancialHardship2017to2019_Constant_uncertainty	0.933	0.104	0.728	1.137	0.998	0.113	0.775	1.220	0.949	0.105	0.743	1.156	0.833	0.095	0.646	1.020	
s ~ FinancialHardship2017to2019_b+3 uncertainty	0.508	0.075	0.360	0.656	0.551	0.076	0.402	0.700	0.544	0.072	0.403	0.686	0.538	0.067	0.408	0.669	
s ~ FinancialHardship2017to2019_b+1 and b+3 uncertainty	0.437	0.133	0.177	0.697	0.468	0.139	0.195	0.741	0.443	0.125	0.198	0.688	0.457	0.116	0.231	0.684	
s ~ FinancialHardship2017to2019_b+1 uncertainty	0.207	0.068	0.073	0.341	0.205	0.070	0.067	0.343	0.184	0.064	0.058	0.310	0.202	0.061	0.083	0.321	
s ~ FinancialHardship2017to2019_b+1 and b+2 uncertainty	0.289	0.101	0.092	0.487	0.333	0.104	0.129	0.536	0.392	0.099	0.198	0.586	0.335	0.098	0.144	0.527	
s ~ FinancialHardship2017to2019_b+2 and b+3 uncertainty	0.689	0.111	0.471	0.906	0.723	0.114	0.499	0.946	0.732	0.102	0.532	0.932	0.747	0.094	0.563	0.930	
s ~ FinancialHardship2017to2019_b+2 uncertainty	0.329	0.071	0.191	0.468	0.402	0.072	0.260	0.544	0.393	0.067	0.262	0.525	0.368	0.063	0.246	0.491	
s ~ IMD_1	-0.036	0.064	-0.161	0.089	-0.012	0.064	-0.137	0.113									
s ~ IMD_2	-0.038	0.058	-0.152	0.076	-0.036	0.058	-0.150	0.078									
s ~ IMD_4	0.062	0.053	-0.042	0.165	0.060	0.053	-0.044	0.163									
s ~ IMD_5	0.019	0.051	-0.080	0.119	0.013	0.051	-0.087	0.113									
s ~ isced	-0.165	0.049	-0.261	-0.069	-0.158	0.050	-0.256	-0.061	-0.176	0.047	-0.269	-0.084					
s ~ own_mortgage	-0.015	0.047	-0.107	0.077	-0.009	0.046	-0.099	0.082									
s ~ own_rent	0.033	0.057	-0.079	0.145	0.082	0.057	-0.029	0.194									
s ~ save	-0.120	0.037	-0.193	-0.048	-0.144	0.037	-0.216	-0.072									
s ~ sex_female	-0.056	0.036	-0.127	0.015	-0.067	0.036	-0.138	0.004	-0.059	0.033	-0.124	0.006					
s ~ single	-0.043	0.047	-0.135	0.050	-0.015	0.047	-0.108	0.077	0.019	0.043	-0.065	0.103					
s ~ singleandchildren	-0.019	0.105	-0.224	0.186	-0.051	0.104	-0.255	0.152	0.028	0.094	-0.156	0.212					
s ~ s	0.714	0.087	0.542	0.885	0.743	0.089	0.569	0.918	0.767	0.082	0.606	0.929	0.750	0.077	0.599	0.900	

### Financial uncertainty (cross-sectional baseline weight and ipw for attrition)

term	Employment adjustment				Socio-economic adjustment				Demographic adjustment				Unadjusted				model.pit1
	Estimate	SE	CI lower	CI upper	Estimate	SE	CI lower	CI upper	Estimate	SE	CI lower	CI upper	Estimate	SE	CI lower	CI upper	
ghq_16 ~ ghq_16	11.885	0.501	10.903	12.867	11.913	0.505	10.923	12.902	11.923	0.508	10.927	12.918	11.953	0.511	10.951	12.956	model5w
ghq_17 ~ ghq_17	13.164	0.416	12.349	13.980	13.129	0.415	12.315	13.943	13.113	0.417	12.295	13.931	13.084	0.419	12.263	13.905	model5w

ghq_18 ~ ghq_18	13.641	0.425	12.808	14.474		13.653	0.427	12.817	14.489		13.656	0.430	12.813	14.499		13.659	0.433	12.810	14.507	model5w
ghq_19 ~ ghq_19	11.717	0.508	10.721	12.713		11.731	0.516	10.720	12.742		11.749	0.525	10.720	12.778		11.763	0.537	10.711	12.815	model5w
i ~ age	-0.007	0.005	-0.017	0.003		-0.014	0.004	-0.022	-0.007		-0.023	0.003	-0.030	-0.017						
i ~ country_LondonandSouthEngland	-0.048	0.103	-0.249	0.154		-0.061	0.106	-0.267	0.146		-0.112	0.107	-0.322	0.097						
i ~ coupleandchildren	-0.218	0.138	-0.488	0.052		-0.249	0.139	-0.521	0.024		-0.049	0.135	-0.313	0.215						
i ~ empl_16_maternity	0.635	0.288	0.071	1.198																
i ~ empl_16_retired	-0.456	0.153	-0.756	-0.157																
i ~ empl_16_self	-0.151	0.163	-0.470	0.169																
i ~ empl_16_sick	5.589	0.504	4.601	6.577																
i ~ empl_16_student	0.134	0.285	-0.424	0.693																
i ~ empl_16_unemployed	1.305	0.387	0.546	2.064																
i ~ empl_maternity	0.067	0.330	-0.580	0.714		0.376	0.317	-0.244	0.997		0.682	0.315	0.064	1.300						
i ~ FinancialUncertainty2016	1.741	0.182	1.383	2.098		1.927	0.189	1.556	2.298		1.968	0.193	1.589	2.347		1.965	0.198	1.577	2.353	model5w
i ~ IMD_1	0.075	0.188	-0.294	0.445		0.289	0.194	-0.092	0.670											
i ~ IMD_2	0.116	0.167	-0.210	0.443		0.134	0.169	-0.197	0.466											
i ~ IMD_4	-0.178	0.145	-0.461	0.106		-0.214	0.149	-0.506	0.077											
i ~ IMD_5	-0.251	0.140	-0.526	0.023		-0.260	0.142	-0.540	0.019											
i ~ isced	0.268	0.137	0.000	0.536		0.183	0.138	-0.087	0.453		-0.070	0.139	-0.342	0.201						
i ~ own_mortgage	0.337	0.128	0.087	0.588		0.466	0.126	0.218	0.714											
i ~ own_rent	0.922	0.163	0.601	1.242		1.345	0.167	1.018	1.673											
i ~ save	-0.431	0.103	-0.633	-0.229		-0.571	0.104	-0.775	-0.366											
i ~ sex_female	0.997	0.103	0.794	1.200		0.970	0.106	0.762	1.178		0.969	0.107	0.759	1.179						
i ~ single	0.449	0.135	0.184	0.714		0.654	0.141	0.377	0.931		1.108	0.145	0.825	1.392						
i ~ singleandchildren	0.389	0.300	-0.200	0.978		0.316	0.302	-0.276	0.908		0.964	0.298	0.380	1.548						
i ~ i	14.491	0.538	13.437	15.545		15.643	0.574	14.517	16.769		16.098	0.596	14.930	17.267		16.819	0.620	15.604	18.034	model5w
i ~ s	-1.060	0.173	-1.400	-0.720		-1.073	0.177	-1.421	-0.726		-1.028	0.180	-1.380	-0.677		-0.973	0.183	-1.331	-0.615	model5w
s ~ age	-0.008	0.002	-0.012	-0.005		-0.008	0.001	-0.011	-0.005		-0.008	0.001	-0.010	-0.005						
s ~ country_LondonandSouthEngland	0.071	0.038	-0.004	0.146		0.064	0.039	-0.011	0.140		0.062	0.038	-0.013	0.137						
s ~ coupleandchildren	0.079	0.053	-0.025	0.182		0.053	0.053	-0.050	0.156		0.067	0.051	-0.032	0.167						
s ~ empl_17_maternity	-0.519	0.128	-0.769	-0.269																
s ~ empl_17_retired	0.076	0.092	-0.105	0.256																
s ~ empl_17_self	-0.063	0.098	-0.256	0.129																
s ~ empl_17_sick	-0.816	0.228	-1.263	-0.368																
s ~ empl_17_student	-0.066	0.147	-0.353	0.221																
s ~ empl_17_unemployed	-0.519	0.147	-0.807	-0.231																
s ~ empl_18_maternity	0.313	0.134	0.049	0.576																
s ~ empl_18_retired	0.045	0.103	-0.156	0.246																
s ~ empl_18_self	0.114	0.129	-0.139	0.366																
s ~ empl_18_sick	0.017	0.242	-0.458	0.492																
s ~ empl_18_student	0.163	0.188	-0.206	0.532																
s ~ empl_18_unemployed	0.578	0.176	0.232	0.923																
s ~ empl_maternity	0.080	0.136	-0.187	0.348		-0.047	0.106	-0.254	0.161		-0.008	0.105	-0.215	0.199						
s ~ empl_retired	-0.074	0.088	-0.247	0.099																
s ~ empl_self	-0.042	0.106	-0.249	0.166																
s ~ empl_sick	1.364	0.244	0.885	1.843																
s ~ empl_student	-0.350	0.176	-0.696	-0.004																
s ~ empl_unemployed	0.442	0.161	0.126	0.759																
s ~ FinancialUncertainty2016	-0.327	0.065	-0.454	-0.200		-0.328	0.064	-0.453	-0.202		-0.317	0.064	-0.443	-0.191		-0.311	0.065	-0.438	-0.184	model5w
s ~ FinancialHardship2017to2019_Constant_uncertainty	0.955	0.108	0.743	1.167		1.028	0.120	0.793	1.263		1.028	0.123	0.787	1.269		0.903	0.128	0.652	1.153	model5w
s ~ FinancialHardship2017to2019_b+3 uncertainty	0.514	0.078	0.362	0.666		0.561	0.079	0.406	0.715		0.553	0.080	0.396	0.711		0.527	0.080	0.369	0.685	model5w
s ~ FinancialHardship2017to2019_b+1 and b+3 uncertainty	0.442	0.138	0.171	0.714		0.474	0.145	0.189	0.758		0.461	0.143	0.182	0.741		0.448	0.143	0.167	0.729	model5w
s ~ FinancialHardship2017to2019_b+1 uncertainty	0.203	0.070	0.066	0.341		0.201	0.072	0.060	0.343		0.187	0.073	0.044	0.331		0.184	0.073	0.041	0.327	model5w
s ~ FinancialHardship2017to2019_b+1 and b+2 uncertainty	0.301	0.103	0.099	0.504		0.349	0.107	0.139	0.559		0.355	0.109	0.142	0.569		0.288	0.114	0.064	0.511	model5w
s ~ FinancialHardship2017to2019_b+2 and b+3 uncertainty	0.681	0.115	0.455	0.907		0.717	0.119	0.484	0.951		0.709	0.117	0.479	0.939		0.667	0.117	0.437	0.897	model5w
s ~ FinancialHardship2017to2019_b+2 uncertainty	0.337	0.073	0.194	0.479		0.414	0.076	0.266	0.562		0.418	0.078	0.265	0.570		0.417	0.079	0.261	0.572	model5w
s ~ IMD_1	-0.030	0.066	-0.159	0.099		-0.004	0.066	-0.133	0.126											
s ~ IMD_2	-0.031	0.060	-0.149	0.087		-0.029	0.061	-0.148	0.090											
s ~ IMD_4	0.068	0.055	-0.040	0.175		0.065	0.055	-0.042	0.173											
s ~ IMD_5	0.025	0.053	-0.078	0.128		0.019	0.053	-0.085	0.122											
s ~ isced	-0.171	0.051	-0.270	-0.071		-0.165	0.051	-0.265	-0.064		-0.191	0.051	-0.291	-0.091						

s ~ own_mortgage	-0.017	0.048	-0.112	0.078	-0.011	0.047	-0.104	0.082										
s ~ own_rent	0.031	0.059	-0.084	0.146	0.083	0.058	-0.031	0.197										
s ~ save	-0.127	0.039	-0.203	-0.052	-0.153	0.038	-0.227	-0.078										
s ~ sex_female	-0.064	0.038	-0.138	0.010	-0.077	0.038	-0.151	-0.003	-0.074	0.038	-0.148	0.000						
s ~ single	-0.035	0.049	-0.132	0.061	-0.005	0.049	-0.101	0.091	0.027	0.049	-0.069	0.123						
s ~ singleandchildren	-0.013	0.107	-0.222	0.197	-0.048	0.106	-0.256	0.160	0.005	0.105	-0.200	0.210						
s ~ s	0.729	0.092	0.548	0.910	0.762	0.095	0.576	0.947	0.767	0.095	0.580	0.955	0.785	0.097	0.595	0.976	model5w	

## Financial hardship and uncertainty (cross-sectional baseline)

term	Employment adjustment																				
	Estimate	SE	CI lower	CI upper																	
ghq_16 ~ ghq_16	11.604	0.473	10.678	12.531																	
ghq_17 ~ ghq_17	12.832	0.389	12.069	13.596																	
ghq_18 ~ ghq_18	13.229	0.397	12.451	14.006																	
ghq_19 ~ ghq_19	11.437	0.479	10.499	12.376																	
i ~ age	-0.012	0.005	-0.022	-0.003																	
i ~ country_LondonandSouthEngland	-0.076	0.097	-0.266	0.115																	
i ~ coupleandchildren	-0.329	0.131	-0.586	-0.072																	
i ~ empl_16_maternity	0.467	0.272	-0.066	1.000																	
i ~ empl_16_retired	-0.225	0.145	-0.509	0.059																	
i ~ empl_16_self	-0.217	0.154	-0.519	0.084																	
i ~ empl_16_sick	5.020	0.493	4.054	5.987																	
i ~ empl_16_student	0.226	0.267	-0.298	0.749																	
i ~ empl_16_unemployed	0.846	0.365	0.130	1.562																	
i ~ empl_maternity	0.122	0.315	-0.495	0.739																	
i ~ FinancialUncertainty2016	1.572	0.176	1.228	1.917																	
i ~ FinancialHardship2016	2.314	0.141	2.037	2.590																	
i ~ IMD_1	-0.057	0.180	-0.410	0.296																	
i ~ IMD_2	0.066	0.156	-0.241	0.372																	
i ~ IMD_4	-0.143	0.137	-0.412	0.126																	
i ~ IMD_5	-0.174	0.134	-0.437	0.088																	
i ~ isced	0.379	0.131	0.121	0.636																	
i ~ own_mortgage	0.166	0.123	-0.075	0.407																	
i ~ own_rent	0.431	0.158	0.122	0.740																	
i ~ save	-0.092	0.098	-0.284	0.101																	
i ~ sex_female	0.994	0.097	0.803	1.185																	
i ~ single	0.305	0.128	0.054	0.556																	
i ~ singleandchildren	0.150	0.292	-0.423	0.722																	
i ~ i	13.449	0.492	12.485	14.414																	
i ~ s	-1.037	0.161	-1.352	-0.722																	
s ~ age	-0.006	0.002	-0.010	-0.003																	
s ~ country_LondonandSouthEngland	0.077	0.036	0.006	0.148																	
s ~ coupleandchildren	0.063	0.051	-0.037	0.164																	
s ~ empl_17_maternity	-0.465	0.121	-0.702	-0.228																	
s ~ empl_17_retired	0.047	0.089	-0.128	0.221																	
s ~ empl_17_self	-0.068	0.091	-0.248	0.111																	
s ~ empl_17_sick	-0.764	0.216	-1.187	-0.340																	
s ~ empl_17_student	-0.067	0.139	-0.340	0.206																	
s ~ empl_17_unemployed	-0.484	0.137	-0.752	-0.216																	
s ~ empl_18_maternity	0.290	0.128	0.040	0.540																	
s ~ empl_18_retired	0.051	0.098	-0.142	0.244																	
s ~ empl_18_self	0.092	0.120	-0.143	0.328																	
s ~ empl_18_sick	-0.008	0.228	-0.454	0.438																	
s ~ empl_18_student	0.151	0.175	-0.193	0.495																	
s ~ empl_18_unemployed	0.509	0.162	0.191	0.826																	
s ~ empl_maternity	0.068	0.134	-0.193	0.330																	
s ~ empl_retired	-0.045	0.085	-0.211	0.120																	
s ~ empl_self	-0.020	0.102	-0.220	0.181																	

s ~ empl_sick	1.327	0.228	0.879	1.775															
s ~ empl_student	-0.348	0.164	-0.669	-0.027															
s ~ empl_unemployed	0.343	0.157	0.036	0.651															
s ~ FinancialUncertainty2016	-0.314	0.064	-0.440	-0.189															
s ~ FinancialHardship2017to2019_Constant_uncertainty	0.795	0.103	0.592	0.998															
s ~ FinancialHardship2017to2019_b+3 uncertainty	0.431	0.074	0.287	0.576															
s ~ FinancialHardship2017to2019_b+1 and b+3 uncertainty	0.344	0.133	0.083	0.605															
s ~ FinancialHardship2017to2019_b+1 uncertainty	0.156	0.068	0.024	0.289															
s ~ FinancialHardship2017to2019_b+1 and b+2 uncertainty	0.202	0.103	0.000	0.403															
s ~ FinancialHardship2017to2019_b+2 and b+3 uncertainty	0.556	0.109	0.343	0.769															
s ~ FinancialHardship2017to2019_b+2 uncertainty	0.246	0.068	0.112	0.380															
s ~ FinancialHardship2016	-0.673	0.058	-0.787	-0.560															
s ~ FinancialHardship2017to2019_Constant_hardship	0.784	0.067	0.653	0.915															
s ~ FinancialHardship2017to2019_b+3 hardship	0.688	0.087	0.518	0.858															
s ~ FinancialHardship2017to2019_b+1 and b+3 hardship	0.460	0.110	0.243	0.676															
s ~ FinancialHardship2017to2019_b+1 hardship	0.116	0.067	-0.015	0.247															
s ~ FinancialHardship2017to2019_b+1 and b+2 hardship	0.260	0.093	0.078	0.443															
s ~ FinancialHardship2017to2019_b+2 and b+3 hardship	0.748	0.084	0.583	0.913															
s ~ FinancialHardship2017to2019_b+2 hardship	0.351	0.072	0.210	0.493															
s ~ IMD_1	-0.019	0.063	-0.143	0.105															
s ~ IMD_2	-0.039	0.057	-0.152	0.073															
s ~ IMD_4	0.074	0.052	-0.029	0.176															
s ~ IMD_5	0.033	0.050	-0.066	0.131															
s ~ isced	-0.158	0.049	-0.254	-0.062															
s ~ own_mortgage	-0.020	0.047	-0.112	0.072															
s ~ own_rent	0.041	0.059	-0.074	0.156															
s ~ save	-0.059	0.037	-0.131	0.014															
s ~ sex_female	-0.059	0.036	-0.129	0.012															
s ~ single	-0.050	0.047	-0.142	0.042															
s ~ singleandchildren	-0.060	0.105	-0.266	0.146															
s ~ s	0.673	0.086	0.506	0.841															

## Financial hardship and uncertainty (cross-sectional baseline and ipw for attrition)

term	Employment adjustment																		
	Estimate	SE	CI lower	CI upper															
ghq_16 ~ ghq_16	11.845	0.496	10.873	12.817															
ghq_17 ~ ghq_17	13.175	0.412	12.368	13.982															
ghq_18 ~ ghq_18	13.607	0.421	12.782	14.432															
ghq_19 ~ ghq_19	11.774	0.505	10.785	12.763															
i ~ age	-0.012	0.005	-0.022	-0.002															
i ~ country_LondonandSouthEngland	-0.080	0.101	-0.277	0.117															
i ~ coupleandchildren	-0.333	0.135	-0.597	-0.069															
i ~ empl_16_maternity	0.480	0.281	-0.071	1.032															
i ~ empl_16_retired	-0.241	0.148	-0.531	0.050															
i ~ empl_16_self	-0.208	0.160	-0.521	0.106															
i ~ empl_16_sick	5.048	0.494	4.080	6.016															
i ~ empl_16_student	0.203	0.272	-0.330	0.737															
i ~ empl_16_unemployed	0.851	0.381	0.104	1.597															
i ~ empl_maternity	0.108	0.325	-0.529	0.744															
i ~ FinancialUncertainty2016	1.593	0.182	1.237	1.950															
i ~ FinancialHardship2016	2.334	0.145	2.050	2.619															
i ~ IMD_1	-0.072	0.186	-0.437	0.292															
i ~ IMD_2	0.066	0.162	-0.251	0.384															
i ~ IMD_4	-0.170	0.141	-0.447	0.107															
i ~ IMD_5	-0.187	0.138	-0.457	0.084															
i ~ isced	0.382	0.135	0.118	0.646															
i ~ own_mortgage	0.154	0.126	-0.093	0.400															
i ~ own_rent	0.427	0.160	0.113	0.741															

<b>i ~ save</b>	-0.090	0.102	-0.289	0.109															
<b>i ~ sex_female</b>	1.016	0.101	0.817	1.214															
<b>i ~ single</b>	0.301	0.133	0.041	0.561															
<b>i ~ singleandchildren</b>	0.108	0.300	-0.479	0.695															
<b>i ~ i</b>	13.697	0.518	12.682	14.711															
<b>i ~ s</b>	-1.045	0.169	-1.376	-0.715															
<b>s ~ age</b>	-0.007	0.002	-0.011	-0.004															
<b>s ~ country_LondonandSouthEngland</b>	0.079	0.038	0.005	0.153															
<b>s ~ coupleandchildren</b>	0.060	0.053	-0.043	0.164															
<b>s ~ empl_17_maternity</b>	-0.492	0.126	-0.738	-0.245															
<b>s ~ empl_17_retired</b>	0.044	0.091	-0.135	0.223															
<b>s ~ empl_17_self</b>	-0.077	0.096	-0.264	0.111															
<b>s ~ empl_17_sick</b>	-0.800	0.225	-1.240	-0.360															
<b>s ~ empl_17_student</b>	-0.067	0.143	-0.347	0.212															
<b>s ~ empl_17_unemployed</b>	-0.482	0.145	-0.765	-0.198															
<b>s ~ empl_18_maternity</b>	0.303	0.132	0.044	0.562															
<b>s ~ empl_18_retired</b>	0.058	0.101	-0.140	0.256															
<b>s ~ empl_18_self</b>	0.100	0.128	-0.150	0.350															
<b>s ~ empl_18_sick</b>	-0.011	0.235	-0.472	0.451															
<b>s ~ empl_18_student</b>	0.157	0.180	-0.196	0.510															
<b>s ~ empl_18_unemployed</b>	0.528	0.172	0.191	0.864															
<b>s ~ empl_maternity</b>	0.090	0.138	-0.180	0.359															
<b>s ~ empl_retired</b>	-0.039	0.087	-0.208	0.131															
<b>s ~ empl_self</b>	-0.019	0.107	-0.228	0.191															
<b>s ~ empl_sick</b>	1.378	0.234	0.918	1.838															
<b>s ~ empl_student</b>	-0.362	0.167	-0.690	-0.035															
<b>s ~ empl_unemployed</b>	0.337	0.161	0.021	0.653															
<b>s ~ FinancialUncertainty2016</b>	-0.321	0.066	-0.450	-0.192															
<b>s ~ FinancialHardship2017to2019_Constant_uncertainty</b>	0.813	0.107	0.604	1.023															
<b>s ~ FinancialHardship2017to2019_b+3_uncertainty</b>	0.436	0.076	0.287	0.584															
<b>s ~ FinancialHardship2017to2019_b+1 and b+3_uncertainty</b>	0.346	0.139	0.073	0.618															
<b>s ~ FinancialHardship2017to2019_b+1_uncertainty</b>	0.154	0.069	0.018	0.289															
<b>s ~ FinancialHardship2017to2019_b+1 and b+2_uncertainty</b>	0.216	0.106	0.008	0.423															
<b>s ~ FinancialHardship2017to2019_b+2 and b+3_uncertainty</b>	0.544	0.113	0.322	0.766															
<b>s ~ FinancialHardship2017to2019_b+2_uncertainty</b>	0.249	0.070	0.111	0.387															
<b>s ~ FinancialHardship2016</b>	-0.677	0.060	-0.794	-0.560															
<b>s ~ FinancialHardship2017to2019_Constant_hardship</b>	0.802	0.069	0.668	0.937															
<b>s ~ FinancialHardship2017to2019_b+3_hardship</b>	0.703	0.089	0.528	0.878															
<b>s ~ FinancialHardship2017to2019_b+1 and b+3_hardship</b>	0.474	0.115	0.249	0.698															
<b>s ~ FinancialHardship2017to2019_b+1_hardship</b>	0.111	0.068	-0.022	0.244															
<b>s ~ FinancialHardship2017to2019_b+1 and b+2_hardship</b>	0.258	0.097	0.069	0.447															
<b>s ~ FinancialHardship2017to2019_b+2 and b+3_hardship</b>	0.756	0.087	0.586	0.926															
<b>s ~ FinancialHardship2017to2019_b+2_hardship</b>	0.350	0.074	0.204	0.496															
<b>s ~ IMD_1</b>	-0.011	0.065	-0.140	0.117															
<b>s ~ IMD_2</b>	-0.030	0.059	-0.146	0.087															
<b>s ~ IMD_4</b>	0.083	0.054	-0.023	0.188															
<b>s ~ IMD_5</b>	0.041	0.052	-0.061	0.143															
<b>s ~ isced</b>	-0.163	0.051	-0.262	-0.064															
<b>s ~ own_mortgage</b>	-0.023	0.048	-0.117	0.071															
<b>s ~ own_rent</b>	0.040	0.060	-0.078	0.158															
<b>s ~ save</b>	-0.062	0.038	-0.137	0.014															
<b>s ~ sex_female</b>	-0.065	0.037	-0.138	0.009															
<b>s ~ single</b>	-0.044	0.049	-0.140	0.051															
<b>s ~ singleandchildren</b>	-0.055	0.107	-0.265	0.156															
<b>s ~ s</b>	0.685	0.090	0.508	0.862															

Supplementary file S.6. LGM results for cohort 2 (2019-2022)

<b>Financial hardship (cross-sectional baseline weight)</b>																
term	Employment adjustment				Socio-economic adjustment				Demographic adjustment				Unadjusted			
	Estimate	SE	CI lower	CI upper	Estimate	SE	CI lower	CI upper	Estimate	SE	CI lower	CI upper	Estimate	SE	CI lower	CI upper
ghq ~~ ghq	10.953	0.483	10.006	11.900	11.185	0.499	10.208	12.162	11.334	0.455	10.442	12.226	11.201	0.426	10.365	12.036
ghq_20 ~~ ghq_20	14.117	0.425	13.283	14.950	14.043	0.426	13.208	14.878	13.983	0.383	13.232	14.734	13.685	0.361	12.979	14.392
ghq_21 ~~ ghq_21	14.240	0.393	13.469	15.011	14.152	0.394	13.379	14.925	14.317	0.390	13.552	15.081	14.285	0.365	13.571	15.000
ghq_22 ~~ ghq_22	10.961	0.501	9.978	11.943	11.186	0.510	10.187	12.185	11.566	0.468	10.648	12.484	11.292	0.435	10.439	12.146
i ~ age	-0.034	0.005	-0.043	-0.024	-0.036	0.004	-0.043	-0.028	-0.037	0.003	-0.043	-0.031				
i ~ country_LondonandSouthEngland	0.166	0.103	-0.036	0.368	0.140	0.106	-0.068	0.348	0.182	0.100	-0.014	0.378				
i ~ coupleandchildren	-0.310	0.133	-0.571	-0.049	-0.384	0.136	-0.651	-0.117	-0.380	0.120	-0.615	-0.144				
i ~ empl_maternity	0.589	0.328	-0.055	1.233	0.324	0.325	-0.313	0.962	0.470	0.299	-0.117	1.056				
i ~ empl_retired	-0.101	0.147	-0.389	0.187												
i ~ empl_self	-0.203	0.180	-0.556	0.151												
i ~ empl_sick	5.469	0.480	4.528	6.410												
i ~ empl_student	-0.064	0.268	-0.590	0.462												
i ~ empl_unemployed	1.359	0.371	0.632	2.085												
i ~ FinancialHardship2019	2.939	0.143	2.658	3.220	3.236	0.146	2.950	3.523	3.475	0.131	3.219	3.731	3.682	0.122	3.443	3.921
i ~ IMD_1	-0.229	0.184	-0.591	0.133	-0.068	0.194	-0.447	0.312								
i ~ IMD_2	0.129	0.162	-0.189	0.447	0.173	0.167	-0.154	0.499								
i ~ IMD_4	0.091	0.143	-0.191	0.372	0.103	0.147	-0.185	0.390								
i ~ IMD_5	0.048	0.138	-0.222	0.319	0.058	0.140	-0.217	0.333								
i ~ isced	0.120	0.135	-0.145	0.385	0.083	0.136	-0.183	0.349	-0.067	0.125	-0.312	0.179				
i ~ own_mortgage	-0.024	0.129	-0.276	0.229	0.008	0.128	-0.243	0.258								
i ~ own_rent	0.444	0.167	0.116	0.772	0.796	0.171	0.460	1.132								
i ~ save	-0.093	0.102	-0.294	0.108	-0.188	0.103	-0.391	0.014								
i ~ sex_female	1.004	0.101	0.806	1.201	1.003	0.103	0.800	1.205	1.065	0.094	0.880	1.250				
i ~ single	0.132	0.139	-0.140	0.405	0.273	0.144	-0.008	0.554	0.490	0.129	0.237	0.742				
i ~ singleandchildren	-0.248	0.306	-0.847	0.352	-0.204	0.317	-0.826	0.418	0.024	0.280	-0.524	0.573				
i ~ i	13.344	0.495	12.374	14.315	14.292	0.528	13.258	15.326	14.425	0.486	13.472	15.378	15.307	0.463	14.400	16.214
i ~ s	-0.709	0.174	-1.050	-0.368	-0.770	0.181	-1.125	-0.415	-0.791	0.166	-1.117	-0.466	-0.803	0.156	-1.108	-0.497
s ~ age	0.000	0.002	-0.003	0.004	0.000	0.001	-0.003	0.003	0.000	0.001	-0.002	0.003				
s ~ country_LondonandSouthEngland	-0.034	0.039	-0.111	0.043	-0.034	0.040	-0.112	0.044	-0.031	0.037	-0.104	0.042				
s ~ coupleandchildren	0.093	0.052	-0.009	0.196	0.098	0.052	-0.005	0.201	0.068	0.047	-0.024	0.160				
s ~ empl_20_maternity	-0.077	0.146	-0.364	0.209												
s ~ empl_20_retired	0.050	0.086	-0.118	0.218												
s ~ empl_20_self	-0.106	0.128	-0.357	0.145												
s ~ empl_20_sick	-0.885	0.218	-1.311	-0.458												
s ~ empl_20_student	0.003	0.139	-0.270	0.276												
s ~ empl_20_unemployed	-0.306	0.139	-0.580	-0.033												
s ~ empl_21_maternity	0.190	0.149	-0.103	0.483												
s ~ empl_21_retired	-0.007	0.109	-0.220	0.207												
s ~ empl_21_self	0.252	0.140	-0.023	0.526												
s ~ empl_21_sick	-0.111	0.259	-0.619	0.398												
s ~ empl_21_student	0.044	0.188	-0.324	0.411												
s ~ empl_21_unemployed	-0.067	0.130	-0.322	0.188												
s ~ empl_22_maternity	0.221	0.193	-0.157	0.598												
s ~ empl_22_retired	0.026	0.103	-0.175	0.228												
s ~ empl_22_self	-0.093	0.128	-0.343	0.158												
s ~ empl_22_sick	0.940	0.278	0.395	1.486												



s ~ empl_22_student	0.332	0.191	-0.043	0.707													
s ~ empl_22_unemployed	0.653	0.152	0.355	0.951													
s ~ empl_maternity	-0.282	0.145	-0.566	0.002	-0.143	0.115	-0.369	0.083	-0.179	0.106	-0.387	0.029					
s ~ FinancialHardship2019	-0.643	0.065	-0.770	-0.515	-0.669	0.065	-0.796	-0.541	-0.745	0.058	-0.858	-0.631	-0.731	0.054	-0.836	-0.626	
s ~ FinancialHardship2020to2022_Constant_hardship	0.875	0.076	0.727	1.024	0.933	0.077	0.782	1.084	0.972	0.071	0.833	1.110	0.950	0.066	0.820	1.080	
s ~ FinancialHardship2020to2022_b+3_hardship	0.687	0.087	0.516	0.858	0.688	0.087	0.517	0.860	0.691	0.080	0.535	0.848	0.756	0.077	0.605	0.908	
s ~ FinancialHardship2020to2022_b+1 and b+3_hardship	0.553	0.114	0.329	0.776	0.609	0.116	0.382	0.836	0.712	0.110	0.496	0.929	0.752	0.105	0.547	0.957	
s ~ FinancialHardship2020to2022_b+1_hardship	0.217	0.081	0.058	0.376	0.214	0.080	0.057	0.370	0.225	0.071	0.087	0.363	0.233	0.065	0.105	0.361	
s ~ FinancialHardship2020to2022_b+1 and b+2_hardship	0.259	0.100	0.064	0.455	0.223	0.098	0.030	0.415	0.242	0.089	0.068	0.417	0.309	0.083	0.147	0.471	
s ~ FinancialHardship2020to2022_b+2 and b+3_hardship	1.009	0.119	0.775	1.242	1.043	0.119	0.810	1.277	1.072	0.112	0.852	1.292	1.085	0.105	0.878	1.291	
s ~ FinancialHardship2020to2022_b+2_hardship	0.293	0.107	0.082	0.503	0.281	0.107	0.071	0.491	0.287	0.098	0.096	0.478	0.380	0.092	0.201	0.560	
s ~ IMD_1	0.073	0.069	-0.062	0.208	0.068	0.070	-0.069	0.205									
s ~ IMD_2	0.087	0.064	-0.039	0.212	0.090	0.064	-0.036	0.216									
s ~ IMD_4	-0.015	0.055	-0.122	0.092	-0.023	0.055	-0.130	0.085									
s ~ IMD_5	-0.011	0.053	-0.115	0.092	-0.009	0.053	-0.113	0.095									
s ~ isced	0.109	0.056	-0.001	0.220	0.095	0.057	-0.016	0.206	0.121	0.052	0.020	0.223					
s ~ own_mortgage	-0.037	0.048	-0.131	0.057	-0.070	0.047	-0.163	0.022									
s ~ own_rent	-0.123	0.064	-0.247	0.002	-0.147	0.063	-0.270	-0.024									
s ~ save	0.123	0.039	0.046	0.200	0.118	0.039	0.041	0.195									
s ~ sex_female	0.102	0.038	0.027	0.177	0.110	0.038	0.035	0.185	0.091	0.035	0.023	0.159					
s ~ single	-0.034	0.051	-0.134	0.066	-0.041	0.051	-0.141	0.058	-0.089	0.045	-0.178	0.000					
s ~ singleandchildren	-0.005	0.119	-0.239	0.228	0.013	0.119	-0.220	0.247	-0.006	0.107	-0.216	0.204					
s ~ s	0.842	0.094	0.658	1.026	0.831	0.096	0.643	1.019	0.818	0.087	0.647	0.989	0.824	0.081	0.664	0.983	

### Financial hardship (cross-sectional baseline weight and ipw for attrition)

term	Employment adjustment				Socio-economic adjustment				Demographic adjustment				Unadjusted			
	Estimate	SE	CI lower	CI upper	Estimate	SE	CI lower	CI upper	Estimate	SE	CI lower	CI upper	Estimate	SE	CI lower	CI upper
ghq ~ ghq	11.954	0.629	10.721	13.187	12.229	0.647	10.961	13.497	12.237	0.653	10.957	13.517	12.265	0.668	10.954	13.575
ghq_20 ~ ghq_20	15.001	0.508	14.005	15.996	14.912	0.507	13.918	15.906	14.923	0.510	13.923	15.923	14.900	0.511	13.898	15.902
ghq_21 ~ ghq_21	14.872	0.437	14.015	15.728	14.754	0.440	13.891	15.617	14.756	0.441	13.892	15.620	14.783	0.443	13.915	15.652
ghq_22 ~ ghq_22	11.802	0.579	10.666	12.937	12.084	0.591	10.926	13.242	12.049	0.592	10.889	13.210	12.012	0.598	10.839	13.186
i ~ age	-0.035	0.005	-0.046	-0.025	-0.037	0.004	-0.045	-0.028	-0.040	0.004	-0.047	-0.032				
i ~ country_LondonandSouthEngland	0.188	0.119	-0.046	0.422	0.155	0.124	-0.087	0.397	0.175	0.124	-0.068	0.417				
i ~ coupleandchildren	-0.341	0.148	-0.631	-0.051	-0.415	0.152	-0.713	-0.117	-0.405	0.149	-0.696	-0.113				
i ~ empl_maternity	0.832	0.410	0.029	1.635	0.518	0.407	-0.280	1.315	0.690	0.410	-0.113	1.493				
i ~ empl_retired	-0.144	0.161	-0.459	0.171												
i ~ empl_self	-0.179	0.202	-0.575	0.217												
i ~ empl_sick	5.557	0.527	4.523	6.591												
i ~ empl_student	-0.086	0.305	-0.684	0.513												
i ~ empl_unemployed	1.316	0.421	0.491	2.141												
i ~ FinancialHardship2019	2.968	0.162	2.650	3.286	3.289	0.165	2.966	3.611	3.552	0.164	3.231	3.873	3.773	0.165	3.448	4.097
i ~ IMD_1	-0.226	0.209	-0.635	0.183	-0.073	0.219	-0.501	0.356								
i ~ IMD_2	0.199	0.186	-0.164	0.563	0.243	0.191	-0.131	0.618								
i ~ IMD_4	0.026	0.159	-0.286	0.338	0.037	0.164	-0.285	0.359								
i ~ IMD_5	0.054	0.151	-0.242	0.350	0.067	0.154	-0.235	0.369								
i ~ isced	0.093	0.145	-0.191	0.378	0.047	0.146	-0.240	0.333	-0.070	0.147	-0.358	0.218				
i ~ own_mortgage	-0.099	0.139	-0.371	0.174	-0.050	0.139	-0.323	0.223								
i ~ own_rent	0.483	0.177	0.136	0.831	0.863	0.181	0.509	1.218								
i ~ save	-0.148	0.114	-0.372	0.076	-0.249	0.115	-0.475	-0.023								
i ~ sex_female	1.051	0.117	0.821	1.280	1.043	0.121	0.806	1.279	1.039	0.121	0.802	1.277				
i ~ single	0.146	0.157	-0.161	0.453	0.304	0.162	-0.013	0.621	0.546	0.161	0.230	0.862				
i ~ singleandchildren	-0.284	0.345	-0.961	0.393	-0.249	0.360	-0.954	0.456	0.066	0.358	-0.636	0.768				
i ~ i	14.181	0.593	13.019	15.343	15.302	0.623	14.081	16.523	15.463	0.635	14.219	16.707	16.286	0.648	15.016	17.555
i ~ s	-0.774	0.223	-1.210	-0.337	-0.836	0.228	-1.283	-0.390	-0.860	0.231	-1.313	-0.406	-0.855	0.234	-1.313	-0.396

s ~ age	0.000	0.002	-0.004	0.004	0.000	0.002	-0.003	0.003	0.001	0.001	-0.002	0.003				
s ~ country_LondonandSouthEngland	-0.033	0.046	-0.122	0.057	-0.031	0.046	-0.122	0.059	-0.035	0.046	-0.124	0.055				
s ~ coupleandchildren	0.100	0.058	-0.012	0.213	0.103	0.058	-0.011	0.216	0.078	0.056	-0.032	0.189				
s ~ empl_20_maternity	-0.181	0.165	-0.505	0.143												
s ~ empl_20_retired	0.014	0.095	-0.172	0.201												
s ~ empl_20_self	-0.145	0.147	-0.433	0.143												
s ~ empl_20_sick	-1.039	0.243	-1.516	-0.562												
s ~ empl_20_student	-0.030	0.143	-0.310	0.250												
s ~ empl_20_unemployed	-0.225	0.153	-0.526	0.075												
s ~ empl_21_maternity	0.209	0.168	-0.119	0.538												
s ~ empl_21_retired	0.040	0.128	-0.211	0.291												
s ~ empl_21_self	0.316	0.157	0.009	0.623												
s ~ empl_21_sick	-0.018	0.301	-0.608	0.572												
s ~ empl_21_student	-0.013	0.192	-0.390	0.364												
s ~ empl_21_unemployed	-0.055	0.141	-0.331	0.222												
s ~ empl_22_maternity	0.225	0.217	-0.201	0.652												
s ~ empl_22_retired	0.034	0.115	-0.191	0.259												
s ~ empl_22_self	-0.122	0.141	-0.398	0.155												
s ~ empl_22_sick	1.045	0.332	0.394	1.697												
s ~ empl_22_student	0.318	0.199	-0.072	0.707												
s ~ empl_22_unemployed	0.602	0.162	0.284	0.921												
s ~ empl_maternity	-0.330	0.174	-0.671	0.010	-0.228	0.142	-0.506	0.049	-0.263	0.142	-0.542	0.016				
s ~ FinancialHardship2019	-0.650	0.072	-0.792	-0.508	-0.675	0.072	-0.816	-0.534	-0.743	0.071	-0.882	-0.604	-0.757	0.071	-0.895	-0.619
s ~ FinancialHardship2020to2022_Constant_hardship	0.890	0.082	0.728	1.051	0.956	0.084	0.791	1.122	0.949	0.086	0.782	1.117	0.935	0.086	0.765	1.104
s ~ FinancialHardship2020to2022_b+3_hardship	0.731	0.095	0.545	0.916	0.727	0.094	0.542	0.912	0.725	0.094	0.540	0.909	0.771	0.097	0.581	0.961
s ~ FinancialHardship2020to2022_b+1 and b+3_hardship	0.547	0.124	0.303	0.791	0.610	0.125	0.365	0.854	0.604	0.126	0.357	0.850	0.614	0.125	0.368	0.860
s ~ FinancialHardship2020to2022_b+1 hardship	0.237	0.089	0.062	0.412	0.242	0.088	0.070	0.414	0.233	0.088	0.061	0.404	0.267	0.090	0.091	0.443
s ~ FinancialHardship2020to2022_b+1 and b+2 hardship	0.270	0.113	0.049	0.492	0.242	0.111	0.025	0.460	0.235	0.112	0.017	0.454	0.249	0.113	0.028	0.470
s ~ FinancialHardship2020to2022_b+2 and b+3 hardship	1.078	0.129	0.826	1.330	1.118	0.128	0.866	1.370	1.115	0.129	0.863	1.368	1.152	0.128	0.901	1.403
s ~ FinancialHardship2020to2022_b+2 hardship	0.274	0.116	0.047	0.501	0.256	0.117	0.027	0.484	0.245	0.117	0.016	0.473	0.300	0.118	0.068	0.531
s ~ IMD_1	0.090	0.075	-0.058	0.238	0.086	0.077	-0.064	0.236								
s ~ IMD_2	0.082	0.073	-0.061	0.225	0.089	0.073	-0.054	0.232								
s ~ IMD_4	-0.012	0.060	-0.129	0.106	-0.018	0.060	-0.135	0.100								
s ~ IMD_5	-0.001	0.057	-0.112	0.110	0.002	0.057	-0.109	0.113								
s ~ isced	0.132	0.062	0.011	0.253	0.117	0.062	-0.004	0.238	0.132	0.062	0.011	0.253				
s ~ own_mortgage	-0.026	0.051	-0.126	0.073	-0.063	0.051	-0.164	0.037								
s ~ own_rent	-0.142	0.067	-0.273	-0.010	-0.163	0.065	-0.292	-0.035								
s ~ save	0.157	0.043	0.072	0.241	0.154	0.044	0.068	0.239								
s ~ sex_female	0.122	0.044	0.036	0.208	0.126	0.044	0.040	0.212	0.127	0.044	0.041	0.212				
s ~ single	-0.058	0.057	-0.169	0.054	-0.066	0.057	-0.177	0.045	-0.092	0.056	-0.202	0.017				
s ~ singleandchildren	-0.014	0.130	-0.268	0.240	-0.005	0.128	-0.256	0.245	-0.051	0.127	-0.300	0.197				
s ~ s	0.849	0.118	0.617	1.080	0.834	0.119	0.601	1.067	0.845	0.120	0.610	1.079	0.856	0.121	0.619	1.092

### Financial uncertainty (cross-sectional baseline weight)

term	Employment adjustment				Socio-economic adjustment				Demographic adjustment				Unadjusted			
	Estimate	SE	CI lower	CI upper	Estimate	SE	CI lower	CI upper	Estimate	SE	CI lower	CI upper	Estimate	SE	CI lower	CI upper
ghq ~ ghq	10.867	0.494	9.899	11.835	11.074	0.509	10.077	12.071	11.271	0.467	10.356	12.187	11.116	0.438	10.257	11.976
ghq_20 ~ ghq_20	13.989	0.434	13.139	14.840	13.922	0.435	13.069	14.775	13.822	0.393	13.052	14.592	13.472	0.367	12.753	14.190
ghq_21 ~ ghq_21	13.974	0.386	13.218	14.729	13.880	0.386	13.123	14.636	14.007	0.393	13.237	14.777	14.005	0.370	13.280	14.729
ghq_22 ~ ghq_22	10.989	0.498	10.012	11.965	11.246	0.507	10.253	12.240	11.730	0.471	10.806	12.654	11.438	0.443	10.571	12.306
i ~ age	-0.033	0.005	-0.043	-0.023	-0.038	0.004	-0.046	-0.030	-0.044	0.003	-0.050	-0.037				
i ~ country_LondonandSouthEngland	0.239	0.107	0.029	0.448	0.215	0.110	-0.001	0.431	0.229	0.105	0.023	0.435				

i ~ coupleandchildren	-0.033	0.135	-0.299	0.232		-0.074	0.139	-0.346	0.198		0.048	0.124	-0.194	0.290				
i ~ empl_maternity	0.384	0.329	-0.261	1.030		0.129	0.325	-0.509	0.766		0.570	0.302	-0.023	1.163				
i ~ empl_retired	-0.355	0.151	-0.652	-0.059														
i ~ empl_self	-0.194	0.185	-0.556	0.168														
i ~ empl_sick	5.750	0.510	4.749	6.750														
i ~ empl_student	-0.160	0.284	-0.717	0.397														
i ~ empl_unemployed	1.968	0.403	1.177	2.758														
i ~ FinancialUncertainty2019	2.174	0.172	1.836	2.512		2.353	0.179	2.002	2.705		2.459	0.168	2.131	2.788	2.429	0.156	2.122	2.735
i ~ IMD_1	-0.157	0.192	-0.533	0.218		0.020	0.202	-0.375	0.416									
i ~ IMD_2	0.178	0.168	-0.151	0.507		0.217	0.173	-0.122	0.556									
i ~ IMD_4	-0.039	0.146	-0.325	0.247		-0.052	0.150	-0.346	0.242									
i ~ IMD_5	-0.095	0.141	-0.370	0.181		-0.118	0.143	-0.399	0.163									
i ~ isced	-0.032	0.142	-0.311	0.247		-0.066	0.142	-0.345	0.213		-0.362	0.131	-0.619	-0.105				
i ~ own_mortgage	0.129	0.133	-0.131	0.389		0.235	0.132	-0.023	0.493									
i ~ own_rent	1.008	0.172	0.672	1.344		1.493	0.178	1.145	1.841									
i ~ save	-0.712	0.105	-0.917	-0.506		-0.878	0.107	-1.087	-0.669									
i ~ sex_female	1.019	0.104	0.815	1.224		1.011	0.107	0.801	1.221		1.056	0.099	0.862	1.250				
i ~ single	0.321	0.145	0.037	0.605		0.484	0.149	0.191	0.776		0.966	0.138	0.695	1.237				
i ~ singleandchildren	0.221	0.319	-0.404	0.846		0.322	0.333	-0.330	0.974		0.973	0.297	0.391	1.554				
i ~ i	14.122	0.528	13.088	15.157		15.285	0.563	14.182	16.388		15.872	0.538	14.818	16.927	17.122	0.518	16.106	18.137
i ~ s	-0.858	0.184	-1.219	-0.498		-0.955	0.191	-1.331	-0.580		-0.957	0.178	-1.306	-0.608	-0.888	0.166	-1.213	-0.563
s ~ age	-0.002	0.002	-0.006	0.002		-0.002	0.001	-0.005	0.000		-0.002	0.001	-0.004	0.001				
s ~ country_LondonandSouthEngland	-0.053	0.040	-0.131	0.025		-0.051	0.040	-0.130	0.028		-0.053	0.038	-0.128	0.021				
s ~ coupleandchildren	0.086	0.053	-0.018	0.190		0.093	0.053	-0.010	0.197		0.059	0.047	-0.033	0.152				
s ~ empl_20_maternity	-0.110	0.148	-0.399	0.180														
s ~ empl_20_retired	0.096	0.088	-0.077	0.269														
s ~ empl_20_self	-0.083	0.129	-0.336	0.169														
s ~ empl_20_sick	-1.144	0.229	-1.592	-0.696														
s ~ empl_20_student	-0.015	0.147	-0.303	0.273														
s ~ empl_20_unemployed	-0.311	0.147	-0.598	-0.023														
s ~ empl_21_maternity	0.191	0.153	-0.108	0.490														
s ~ empl_21_retired	0.004	0.110	-0.211	0.220														
s ~ empl_21_self	0.283	0.140	0.010	0.557														
s ~ empl_21_sick	-0.073	0.259	-0.581	0.434														
s ~ empl_21_student	0.076	0.195	-0.305	0.458														
s ~ empl_21_unemployed	-0.057	0.133	-0.318	0.204														
s ~ empl_22_maternity	0.154	0.192	-0.222	0.529														
s ~ empl_22_retired	-0.028	0.102	-0.229	0.173														
s ~ empl_22_self	-0.104	0.126	-0.351	0.142														
s ~ empl_22_sick	1.133	0.289	0.566	1.700														
s ~ empl_22_student	0.335	0.195	-0.047	0.717														
s ~ empl_22_unemployed	0.726	0.154	0.423	1.028														
s ~ empl_maternity	-0.196	0.143	-0.476	0.084		-0.099	0.115	-0.324	0.125		-0.142	0.105	-0.348	0.064				
s ~ FinancialUncertainty2019	-0.346	0.065	-0.473	-0.219		-0.349	0.066	-0.478	-0.221		-0.375	0.061	-0.495	-0.255	-0.336	0.056	-0.446	-0.226
s ~ FinancialHardship2020to2022_Constant_uncertainty	0.969	0.100	0.773	1.164		1.000	0.103	0.799	1.201		0.989	0.096	0.801	1.176	0.838	0.089	0.663	1.012
s ~ FinancialHardship2020to2022_b+3_uncertainty	0.443	0.054	0.338	0.549		0.465	0.054	0.359	0.571		0.434	0.051	0.334	0.534	0.393	0.049	0.297	0.490
s ~ FinancialHardship2020to2022_b+1 and b+3_uncertainty	0.618	0.098	0.427	0.810		0.619	0.100	0.423	0.815		0.582	0.093	0.401	0.764	0.521	0.091	0.342	0.699
s ~ FinancialHardship2020to2022_b+1_uncertainty	0.287	0.083	0.125	0.449		0.300	0.082	0.140	0.461		0.287	0.075	0.140	0.434	0.261	0.071	0.121	0.401

s ~ FinancialHardship2020to2022_b+1 and b+2 uncertainty	0.635	0.132	0.376	0.893	0.640	0.134	0.377	0.903	0.628	0.121	0.391	0.865	0.567	0.117	0.337	0.796
s ~ FinancialHardship2020to2022_b+2 and b+3 uncertainty	0.810	0.104	0.605	1.014	0.808	0.105	0.602	1.015	0.832	0.099	0.637	1.027	0.764	0.093	0.582	0.945
s ~ FinancialHardship2020to2022_b+2 uncertainty	0.512	0.088	0.339	0.684	0.523	0.089	0.349	0.698	0.530	0.079	0.374	0.685	0.466	0.072	0.324	0.608
s ~ IMD_1	0.106	0.070	-0.031	0.243	0.103	0.071	-0.036	0.242								
s ~ IMD_2	0.091	0.064	-0.035	0.218	0.099	0.065	-0.028	0.226								
s ~ IMD_4	-0.003	0.055	-0.112	0.106	-0.008	0.056	-0.117	0.102								
s ~ IMD_5	-0.022	0.053	-0.126	0.083	-0.018	0.053	-0.123	0.086								
s ~ isced	0.091	0.057	-0.021	0.203	0.075	0.057	-0.037	0.188	0.090	0.053	-0.013	0.194				
s ~ own_mortgage	-0.039	0.048	-0.134	0.056	-0.072	0.048	-0.166	0.022								
s ~ own_rent	-0.078	0.064	-0.204	0.047	-0.102	0.063	-0.226	0.022								
s ~ save	0.134	0.038	0.060	0.209	0.127	0.038	0.052	0.202								
s ~ sex_female	0.102	0.039	0.026	0.178	0.105	0.039	0.029	0.181	0.088	0.035	0.018	0.157				
s ~ single	-0.054	0.052	-0.155	0.048	-0.060	0.052	-0.161	0.041	-0.089	0.046	-0.179	0.002				
s ~ singleandchildren	-0.037	0.117	-0.267	0.194	-0.014	0.117	-0.243	0.215	0.010	0.104	-0.194	0.214				
s ~ s	0.862	0.097	0.673	1.052	0.859	0.098	0.667	1.052	0.832	0.090	0.655	1.009	0.826	0.084	0.662	0.990

**Financial uncertainty (cross-sectional baseline weight and ipw for attrition)**

term	Employment adjustment				Socio-economic adjustment				Demographic adjustment				Unadjusted			
	Estimate	SE	CI lower	CI upper	Estimate	SE	CI lower	CI upper	Estimate	SE	CI lower	CI upper	Estimate	SE	CI lower	CI upper
ghq ~ ghq	11.903	0.640	10.648	13.158	12.172	0.657	10.883	13.461	12.247	0.670	10.933	13.560	12.297	0.689	10.946	13.647
ghq_20 ~ ghq_20	14.886	0.517	13.872	15.900	14.796	0.517	13.783	15.809	14.789	0.524	13.763	15.816	14.759	0.527	13.726	15.791
ghq_21 ~ ghq_21	14.645	0.430	13.802	15.487	14.526	0.432	13.680	15.372	14.489	0.432	13.642	15.335	14.510	0.435	13.657	15.363
ghq_22 ~ ghq_22	11.828	0.581	10.689	12.966	12.129	0.591	10.971	13.286	12.147	0.596	10.978	13.316	12.117	0.609	10.922	13.311
i ~ age	-0.033	0.006	-0.044	-0.022	-0.038	0.004	-0.047	-0.029	-0.045	0.004	-0.053	-0.037				
i ~ country_LondonandSouthEngland	0.249	0.124	0.005	0.492	0.220	0.129	-0.033	0.473	0.197	0.131	-0.060	0.454				
i ~ coupleandchildren	-0.066	0.151	-0.363	0.230	-0.104	0.155	-0.409	0.200	0.108	0.154	-0.195	0.410				
i ~ empl_maternity	0.641	0.407	-0.157	1.440	0.343	0.403	-0.446	1.132	0.810	0.409	0.009	1.611				
i ~ empl_retired	-0.454	0.167	-0.782	-0.127												
i ~ empl_self	-0.168	0.206	-0.573	0.237												
i ~ empl_sick	5.789	0.558	4.695	6.883												
i ~ empl_student	-0.278	0.323	-0.911	0.355												
i ~ empl_unemployed	1.877	0.450	0.995	2.759												
i ~ FinancialUncertainty2019	2.123	0.189	1.753	2.493	2.337	0.199	1.946	2.727	2.331	0.201	1.937	2.726	2.209	0.203	1.812	2.606
i ~ IMD_1	-0.162	0.217	-0.587	0.264	0.020	0.229	-0.428	0.468								
i ~ IMD_2	0.220	0.192	-0.157	0.596	0.256	0.198	-0.133	0.645								
i ~ IMD_4	-0.084	0.162	-0.401	0.233	-0.086	0.167	-0.414	0.242								
i ~ IMD_5	-0.102	0.154	-0.403	0.200	-0.123	0.157	-0.431	0.185								
i ~ isced	-0.059	0.152	-0.358	0.239	-0.097	0.153	-0.397	0.204	-0.408	0.158	-0.717	-0.099				
i ~ own_mortgage	0.080	0.143	-0.199	0.360	0.236	0.143	-0.045	0.517								
i ~ own_rent	1.064	0.183	0.706	1.422	1.612	0.188	1.244	1.980								
i ~ save	-0.815	0.116	-1.043	-0.587	-0.992	0.119	-1.225	-0.760								
i ~ sex_female	1.065	0.122	0.826	1.304	1.048	0.126	0.801	1.295	1.034	0.129	0.781	1.286				
i ~ single	0.365	0.164	0.045	0.686	0.559	0.169	0.228	0.890	1.139	0.174	0.797	1.481				
i ~ singleandchildren	0.142	0.359	-0.561	0.844	0.230	0.375	-0.506	0.965	1.070	0.377	0.331	1.809				
i ~ i	15.114	0.646	13.849	16.379	16.498	0.678	15.170	17.827	17.256	0.725	15.834	18.677	18.584	0.762	17.091	20.077
i ~ s	-0.939	0.239	-1.407	-0.471	-1.040	0.244	-1.518	-0.562	-1.076	0.253	-1.573	-0.579	-1.017	0.258	-1.522	-0.511

s ~ age	-0.002	0.002	-0.006	0.002		-0.002	0.002	-0.005	0.001		-0.002	0.001	-0.005	0.001					
s ~ country_LondonandSouthEngland	-0.044	0.046	-0.134	0.046		-0.040	0.047	-0.132	0.051		-0.047	0.046	-0.137	0.043					
s ~ coupleandchildren	0.095	0.059	-0.020	0.210		0.101	0.059	-0.014	0.216		0.064	0.057	-0.048	0.177					
s ~ empl_20_maternity	-0.190	0.165	-0.513	0.133															
s ~ empl_20_retired	0.078	0.098	-0.113	0.270															
s ~ empl_20_self	-0.102	0.144	-0.385	0.181															
s ~ empl_20_sick	-1.151	0.253	-1.647	-0.656															
s ~ empl_20_student	-0.072	0.150	-0.366	0.223															
s ~ empl_20_unemployed	-0.217	0.162	-0.534	0.100															
s ~ empl_21_maternity	0.207	0.168	-0.123	0.536															
s ~ empl_21_retired	0.043	0.128	-0.208	0.294															
s ~ empl_21_self	0.327	0.153	0.027	0.626															
s ~ empl_21_sick	-0.014	0.296	-0.594	0.566															
s ~ empl_21_student	0.060	0.201	-0.333	0.453															
s ~ empl_21_unemployed	-0.032	0.143	-0.313	0.249															
s ~ empl_22_maternity	0.176	0.217	-0.249	0.600															
s ~ empl_22_retired	-0.028	0.114	-0.251	0.194															
s ~ empl_22_self	-0.133	0.137	-0.401	0.136															
s ~ empl_22_sick	1.091	0.339	0.427	1.755															
s ~ empl_22_student	0.279	0.201	-0.115	0.674															
s ~ empl_22_unemployed	0.671	0.160	0.358	0.985															
s ~ empl_maternity	-0.258	0.167	-0.586	0.069		-0.175	0.135	-0.440	0.090		-0.204	0.135	-0.468	0.060					
s ~ FinancialUncertainty2019	-0.329	0.072	-0.470	-0.188		-0.334	0.073	-0.478	-0.191		-0.334	0.073	-0.477	-0.190		-0.311	0.073	-0.454	-0.167
s ~ FinancialHardship2020to2022_Constant_uncertainty	1.037	0.111	0.821	1.254		1.082	0.116	0.854	1.310		1.067	0.118	0.836	1.298		0.936	0.119	0.703	1.170
s ~ FinancialHardship2020to2022_b+3_uncertainty	0.473	0.059	0.357	0.588		0.507	0.059	0.391	0.623		0.506	0.060	0.388	0.624		0.452	0.061	0.333	0.572
s ~ FinancialHardship2020to2022_b+1 and b+3_uncertainty	0.646	0.107	0.437	0.855		0.654	0.112	0.434	0.873		0.638	0.113	0.416	0.860		0.563	0.115	0.337	0.790
s ~ FinancialHardship2020to2022_b+1_uncertainty	0.317	0.096	0.129	0.505		0.328	0.095	0.143	0.514		0.314	0.096	0.126	0.503		0.298	0.099	0.103	0.493
s ~ FinancialHardship2020to2022_b+1 and b+2_uncertainty	0.750	0.148	0.460	1.040		0.753	0.151	0.456	1.049		0.742	0.153	0.441	1.043		0.720	0.157	0.412	1.027
s ~ FinancialHardship2020to2022_b+2 and b+3_uncertainty	0.829	0.117	0.600	1.057		0.830	0.117	0.602	1.059		0.829	0.116	0.601	1.056		0.754	0.115	0.528	0.979
s ~ FinancialHardship2020to2022_b+2_uncertainty	0.483	0.106	0.275	0.690		0.493	0.109	0.280	0.707		0.476	0.107	0.265	0.686		0.442	0.109	0.228	0.656
s ~ IMD_1	0.124	0.077	-0.026	0.274		0.123	0.078	-0.030	0.275										
s ~ IMD_2	0.093	0.073	-0.051	0.237		0.103	0.074	-0.041	0.248										
s ~ IMD_4	0.002	0.061	-0.118	0.121		-0.002	0.061	-0.122	0.117										
s ~ IMD_5	-0.011	0.057	-0.124	0.101		-0.007	0.057	-0.120	0.105										
s ~ isced	0.104	0.062	-0.019	0.226		0.089	0.063	-0.034	0.211		0.102	0.063	-0.022	0.225					
s ~ own_mortgage	-0.035	0.051	-0.136	0.065		-0.072	0.052	-0.173	0.029										
s ~ own_rent	-0.102	0.068	-0.235	0.032		-0.121	0.066	-0.250	0.009										
s ~ save	0.167	0.042	0.085	0.248		0.159	0.042	0.075	0.242										
s ~ sex_female	0.120	0.045	0.033	0.207		0.119	0.045	0.032	0.206		0.119	0.045	0.031	0.206					
s ~ single	-0.079	0.057	-0.192	0.034		-0.086	0.057	-0.199	0.026		-0.107	0.056	-0.217	0.004					
s ~ singleandchildren	-0.018	0.126	-0.266	0.230		-0.001	0.124	-0.245	0.243		-0.043	0.122	-0.283	0.196					
s ~ s	0.876	0.123	0.636	1.117		0.866	0.123	0.625	1.107		0.867	0.124	0.623	1.111		0.868	0.126	0.621	1.114

## Financial hardship and uncertainty (cross-sectional baseline)

term	Employment adjustment			
	Estimate	SE	CI lower	CI upper
ghq ~~ ghq	10.778	0.487	9.824	11.732
ghq_20 ~~ ghq_20	14.051	0.431	13.207	14.896
ghq_21 ~~ ghq_21	14.024	0.387	13.266	14.783
ghq_22 ~~ ghq_22	10.874	0.494	9.906	11.841
i ~ age	-0.035	0.005	-0.044	-0.025
i ~ country_LondonandSouthEngland	0.213	0.104	0.009	0.417
i ~ coupleandchildren	-0.281	0.133	-0.542	-0.020
i ~ empl_maternity	0.428	0.325	-0.210	1.065
i ~ empl_retired	-0.117	0.146	-0.404	0.170
i ~ empl_self	-0.211	0.180	-0.563	0.142
i ~ empl_sick	5.211	0.490	4.252	6.171
i ~ empl_student	-0.061	0.273	-0.596	0.474
i ~ empl_unemployed	1.432	0.383	0.681	2.183
i ~ FinancialUncertainty2019	1.754	0.170	1.421	2.087
i ~ FinancialHardship2019	2.765	0.146	2.479	3.051
i ~ IMD_1	-0.219	0.187	-0.584	0.147
i ~ IMD_2	0.139	0.163	-0.180	0.458
i ~ IMD_4	0.049	0.144	-0.233	0.331
i ~ IMD_5	0.038	0.138	-0.232	0.309
i ~ isced	0.099	0.137	-0.168	0.367
i ~ own_mortgage	-0.032	0.129	-0.284	0.220
i ~ own_rent	0.555	0.169	0.224	0.886
i ~ save	-0.072	0.102	-0.272	0.129
i ~ sex_female	1.006	0.101	0.808	1.205
i ~ single	0.121	0.140	-0.153	0.395
i ~ singleandchildren	-0.186	0.316	-0.804	0.433
i ~~ i	13.012	0.494	12.044	13.981
i ~~ s	-0.823	0.177	-1.169	-0.476
s ~ age	-0.001	0.002	-0.005	0.002
s ~ country_LondonandSouthEngland	-0.049	0.040	-0.127	0.028
s ~ coupleandchildren	0.098	0.053	-0.005	0.202
s ~ empl_20_maternity	-0.110	0.146	-0.396	0.176
s ~ empl_20_retired	0.071	0.087	-0.099	0.241
s ~ empl_20_self	-0.097	0.128	-0.348	0.155
s ~ empl_20_sick	-1.050	0.224	-1.489	-0.612
s ~ empl_20_student	0.003	0.143	-0.277	0.283
s ~ empl_20_unemployed	-0.299	0.144	-0.582	-0.017
s ~ empl_21_maternity	0.192	0.150	-0.103	0.487
s ~ empl_21_retired	0.011	0.109	-0.203	0.225
s ~ empl_21_self	0.277	0.140	0.003	0.551
s ~ empl_21_sick	-0.104	0.256	-0.605	0.397
s ~ empl_21_student	0.030	0.191	-0.345	0.405
s ~ empl_21_unemployed	-0.070	0.131	-0.328	0.187
s ~ empl_22_maternity	0.162	0.194	-0.217	0.542
s ~ empl_22_retired	-0.007	0.103	-0.208	0.194
s ~ empl_22_self	-0.113	0.127	-0.362	0.136
s ~ empl_22_sick	1.065	0.282	0.511	1.618
s ~ empl_22_student	0.312	0.194	-0.067	0.692
s ~ empl_22_unemployed	0.636	0.153	0.336	0.935
s ~ empl_maternity	-0.242	0.145	-0.526	0.043

s ~ FinancialUncertainty2019	-0.306	0.065	-0.434	-0.179															
s ~ FinancialHardship2020to2022_Constant_uncertainty	0.798	0.101	0.599	0.996															
s ~ FinancialHardship2020to2022_b+3_uncertainty	0.361	0.054	0.256	0.467															
s ~ FinancialHardship2020to2022_b+1 and b+3_uncertainty	0.506	0.096	0.317	0.694															
s ~ FinancialHardship2020to2022_b+1_uncertainty	0.236	0.080	0.079	0.393															
s ~ FinancialHardship2020to2022_b+1 and b+2_uncertainty	0.519	0.131	0.263	0.775															
s ~ FinancialHardship2020to2022_b+2 and b+3_uncertainty	0.663	0.102	0.464	0.862															
s ~ FinancialHardship2020to2022_b+2_uncertainty	0.447	0.088	0.274	0.620															
s ~ FinancialHardship2019	-0.616	0.066	-0.745	-0.487															
s ~ FinancialHardship2020to2022_Constant_hardship	0.692	0.077	0.542	0.842															
s ~ FinancialHardship2020to2022_b+3_hardship	0.587	0.089	0.412	0.761															
s ~ FinancialHardship2020to2022_b+1 and b+3_hardship	0.442	0.117	0.213	0.670															
s ~ FinancialHardship2020to2022_b+1_hardship	0.192	0.080	0.035	0.350															
s ~ FinancialHardship2020to2022_b+1 and b+2_hardship	0.192	0.099	-0.002	0.386															
s ~ FinancialHardship2020to2022_b+2 and b+3_hardship	0.849	0.119	0.615	1.084															
s ~ FinancialHardship2020to2022_b+2_hardship	0.204	0.106	-0.004	0.412															
s ~ IMD_1	0.090	0.070	-0.047	0.226															
s ~ IMD_2	0.089	0.065	-0.037	0.216															
s ~ IMD_4	-0.017	0.055	-0.125	0.092															
s ~ IMD_5	-0.019	0.053	-0.123	0.086															
s ~ isced	0.101	0.057	-0.010	0.212															
s ~ own_mortgage	-0.032	0.048	-0.127	0.062															
s ~ own_rent	-0.096	0.065	-0.222	0.031															
s ~ save	0.102	0.039	0.025	0.179															
s ~ sex_female	0.108	0.038	0.033	0.183															
s ~ single	-0.033	0.052	-0.134	0.068															
s ~ singleandchildren	-0.030	0.120	-0.265	0.206															
s ~ s	0.844	0.095	0.659	1.030															

## Financial hardship and uncertainty (cross-sectional baseline and ipw for attrition)

term	Employment adjustment			
	Estimate	SE	CI lower	CI upper
ghq ~~ ghq	11.804	0.634	10.561	13.047
ghq_20 ~~ ghq_20	14.946	0.513	13.940	15.951
ghq_21 ~~ ghq_21	14.703	0.431	13.858	15.549
ghq_22 ~~ ghq_22	11.710	0.573	10.586	12.833
i ~ age	-0.036	0.005	-0.047	-0.025
i ~ country_LondonandSouthEngland	0.216	0.120	-0.019	0.452
i ~ coupleandchildren	-0.320	0.148	-0.610	-0.029
i ~ empl_maternity	0.688	0.410	-0.116	1.491
i ~ empl_retired	-0.156	0.160	-0.471	0.158
i ~ empl_self	-0.172	0.201	-0.567	0.222
i ~ empl_sick	5.270	0.530	4.230	6.309
i ~ empl_student	-0.102	0.310	-0.709	0.504
i ~ empl_unemployed	1.358	0.429	0.518	2.198
i ~ FinancialUncertainty2019	1.677	0.187	1.310	2.044
i ~ FinancialHardship2019	2.835	0.166	2.510	3.159
i ~ IMD_1	-0.208	0.211	-0.622	0.205
i ~ IMD_2	0.199	0.186	-0.166	0.563
i ~ IMD_4	0.003	0.160	-0.310	0.315
i ~ IMD_5	0.038	0.151	-0.257	0.334
i ~ isced	0.075	0.146	-0.211	0.361
i ~ own_mortgage	-0.092	0.139	-0.363	0.180
i ~ own_rent	0.591	0.178	0.243	0.940
i ~ save	-0.146	0.114	-0.369	0.078
i ~ sex_female	1.058	0.118	0.827	1.289
i ~ single	0.141	0.157	-0.167	0.450
i ~ singleandchildren	-0.244	0.354	-0.937	0.449
i ~~ i	13.928	0.598	12.755	15.101
i ~~ s	-0.908	0.228	-1.355	-0.461
s ~ age	-0.002	0.002	-0.006	0.002
s ~ country_LondonandSouthEngland	-0.045	0.046	-0.135	0.044
s ~ coupleandchildren	0.106	0.058	-0.007	0.220
s ~ empl_20_maternity	-0.191	0.164	-0.512	0.131
s ~ empl_20_retired	0.045	0.095	-0.142	0.232
s ~ empl_20_self	-0.122	0.145	-0.406	0.162
s ~ empl_20_sick	-1.063	0.244	-1.541	-0.585
s ~ empl_20_student	-0.045	0.145	-0.330	0.240
s ~ empl_20_unemployed	-0.211	0.158	-0.521	0.099
s ~ empl_21_maternity	0.202	0.167	-0.125	0.529
s ~ empl_21_retired	0.050	0.128	-0.201	0.300
s ~ empl_21_self	0.322	0.153	0.022	0.623
s ~ empl_21_sick	-0.035	0.290	-0.604	0.533
s ~ empl_21_student	0.023	0.196	-0.361	0.408
s ~ empl_21_unemployed	-0.037	0.141	-0.313	0.240
s ~ empl_22_maternity	0.195	0.219	-0.234	0.624
s ~ empl_22_retired	-0.003	0.114	-0.226	0.220
s ~ empl_22_self	-0.141	0.138	-0.412	0.130
s ~ empl_22_sick	1.018	0.332	0.367	1.668
s ~ empl_22_student	0.253	0.199	-0.137	0.642
s ~ empl_22_unemployed	0.575	0.160	0.262	0.889
s ~ empl_maternity	-0.316	0.172	-0.654	0.022
s ~ FinancialUncertainty2019	-0.284	0.073	-0.426	-0.141



s ~ FinancialHardship2020to2022_Constant_uncertainty	0.856	0.112	0.636	1.075															
s ~ FinancialHardship2020to2022_b+3_uncertainty	0.380	0.059	0.264	0.495															
s ~ FinancialHardship2020to2022_b+1 and b+3_uncertainty	0.538	0.104	0.333	0.742															
s ~ FinancialHardship2020to2022_b+1_uncertainty	0.265	0.092	0.084	0.446															
s ~ FinancialHardship2020to2022_b+1 and b+2_uncertainty	0.622	0.147	0.335	0.910															
s ~ FinancialHardship2020to2022_b+2 and b+3_uncertainty	0.669	0.114	0.445	0.892															
s ~ FinancialHardship2020to2022_b+2_uncertainty	0.415	0.107	0.206	0.623															
s ~ FinancialHardship2019	-0.632	0.073	-0.775	-0.489															
s ~ FinancialHardship2020to2022_Constant_hardship	0.702	0.083	0.540	0.864															
s ~ FinancialHardship2020to2022_b+3_hardship	0.631	0.097	0.441	0.821															
s ~ FinancialHardship2020to2022_b+1 and b+3_hardship	0.435	0.126	0.187	0.683															
s ~ FinancialHardship2020to2022_b+1_hardship	0.219	0.088	0.047	0.391															
s ~ FinancialHardship2020to2022_b+1 and b+2_hardship	0.212	0.111	-0.006	0.431															
s ~ FinancialHardship2020to2022_b+2 and b+3_hardship	0.905	0.127	0.657	1.153															
s ~ FinancialHardship2020to2022_b+2_hardship	0.183	0.113	-0.039	0.405															
s ~ IMD_1	0.108	0.076	-0.041	0.257															
s ~ IMD_2	0.091	0.073	-0.053	0.234															
s ~ IMD_4	-0.010	0.061	-0.129	0.109															
s ~ IMD_5	-0.008	0.057	-0.121	0.104															
s ~ isced	0.116	0.062	-0.005	0.238															
s ~ own_mortgage	-0.024	0.051	-0.124	0.076															
s ~ own_rent	-0.119	0.068	-0.252	0.014															
s ~ save	0.134	0.043	0.050	0.218															
s ~ sex_female	0.123	0.044	0.036	0.209															
s ~ single	-0.053	0.057	-0.165	0.060															
s ~ singleandchildren	-0.016	0.129	-0.269	0.238															
s ~ s	0.858	0.120	0.623	1.093															