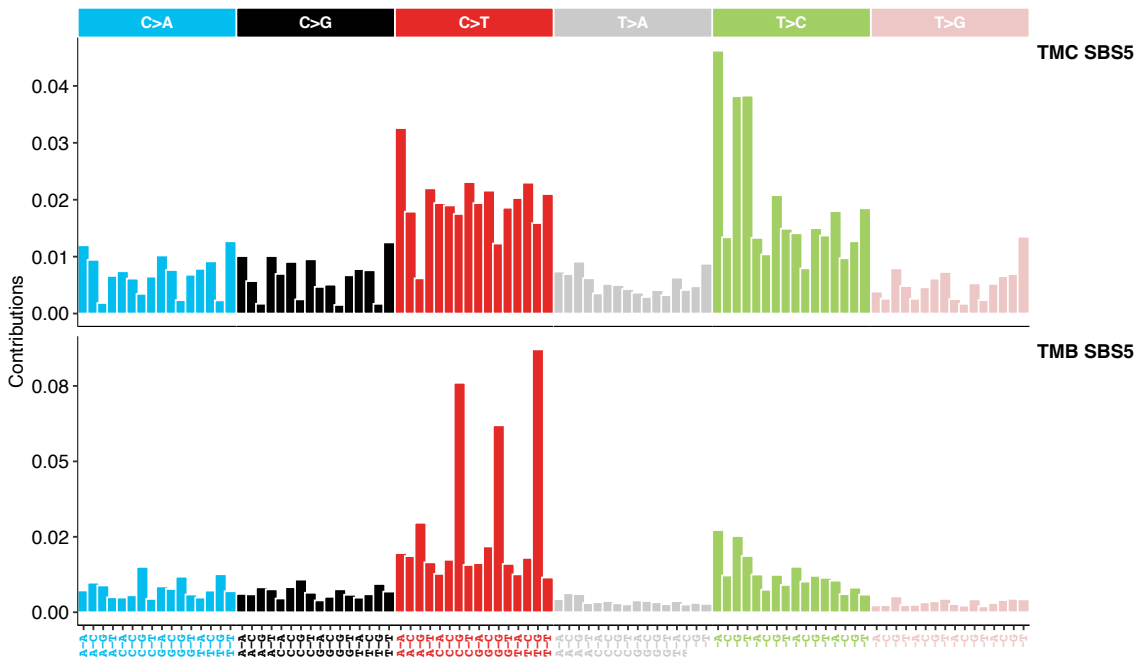
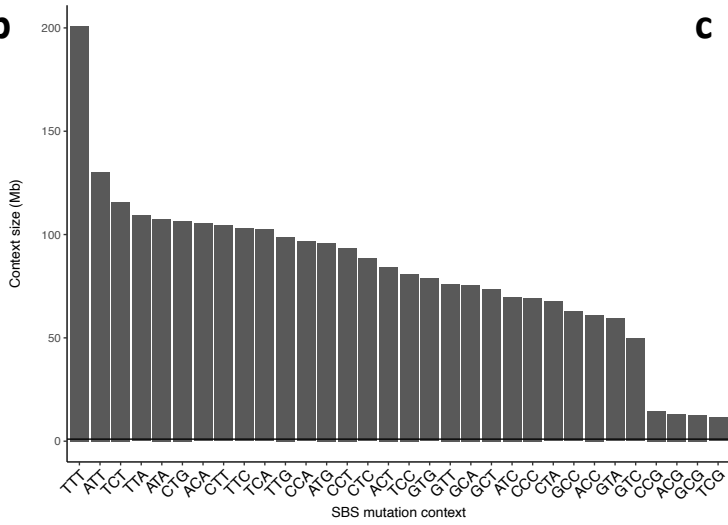


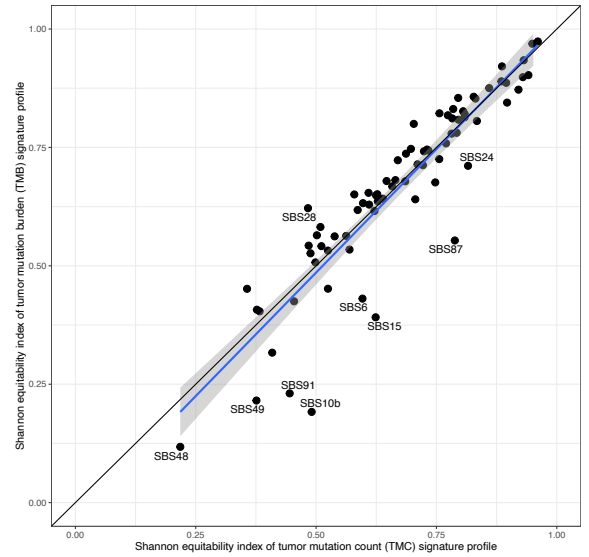
a



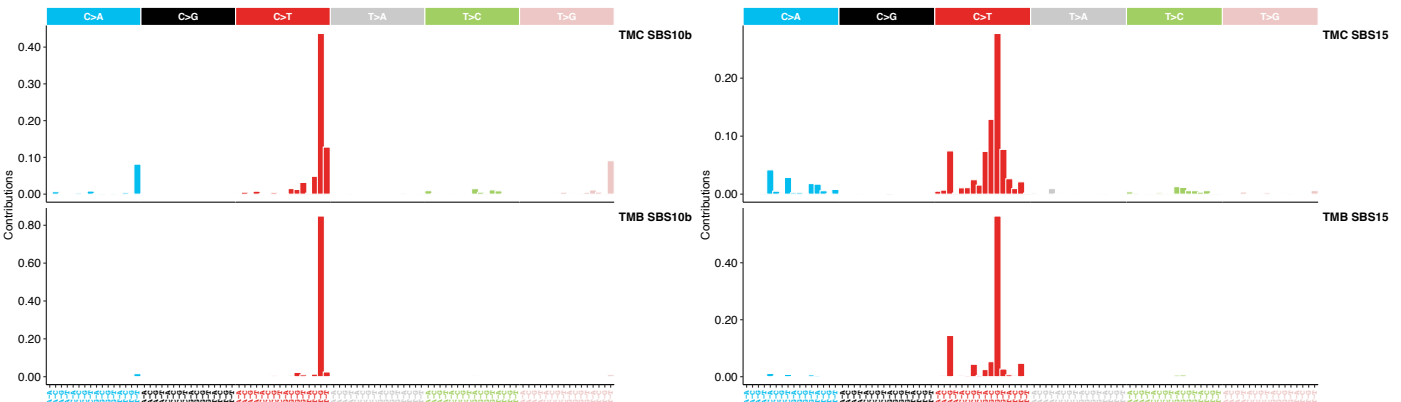
b

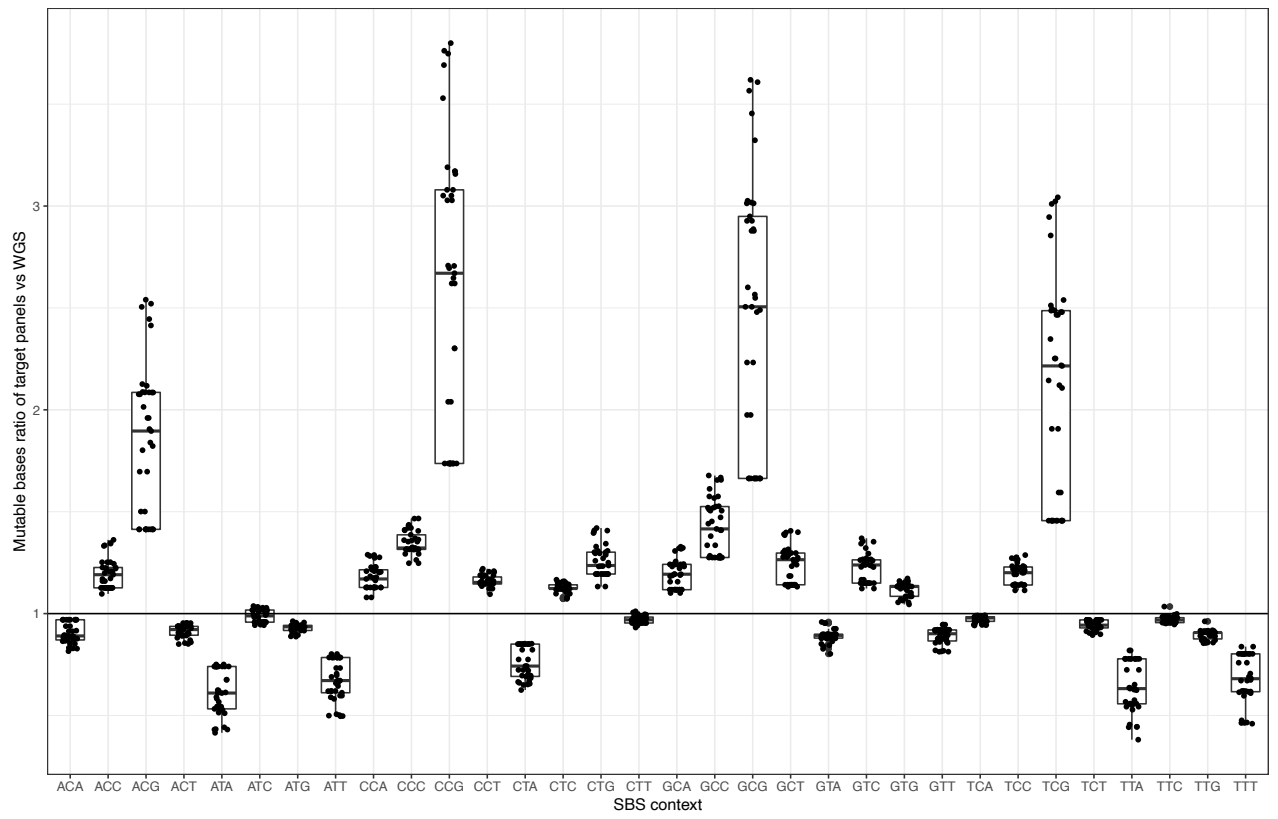


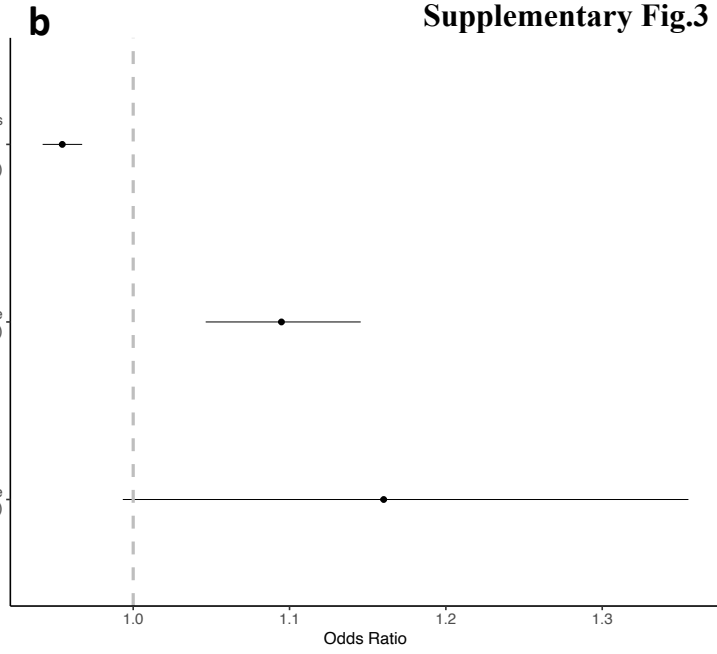
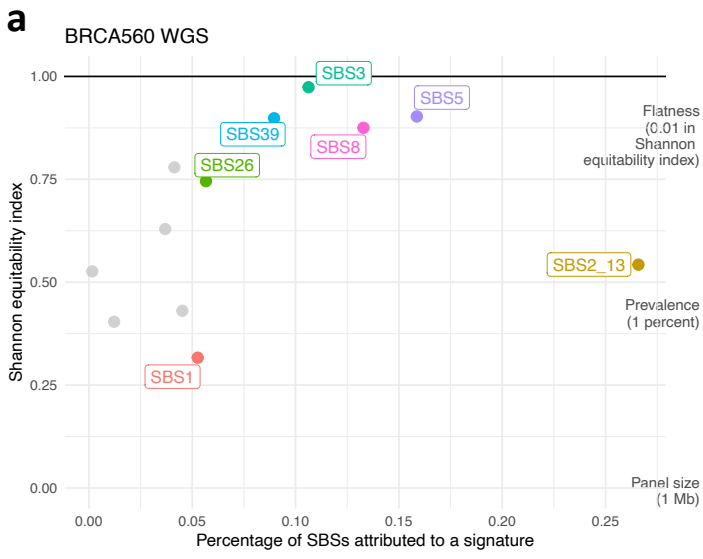
c



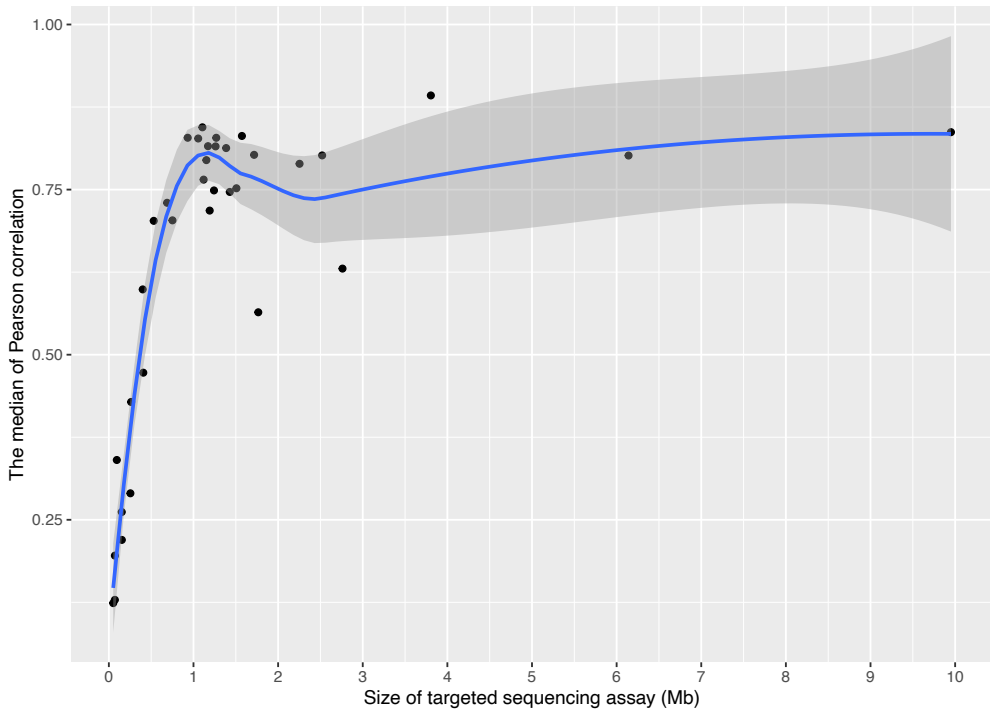
d

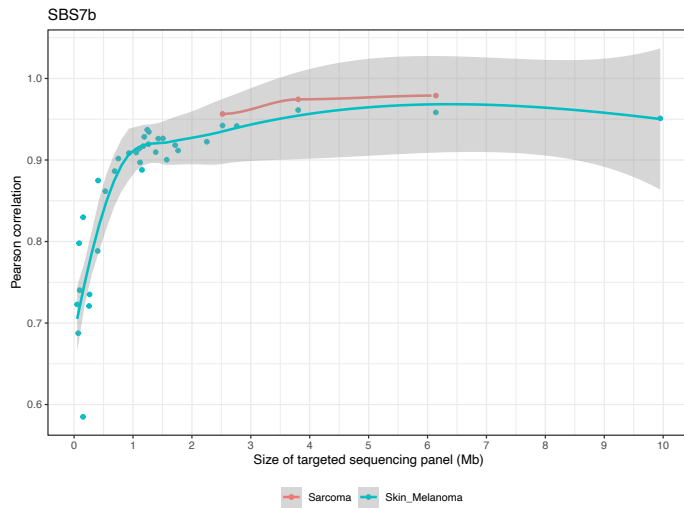
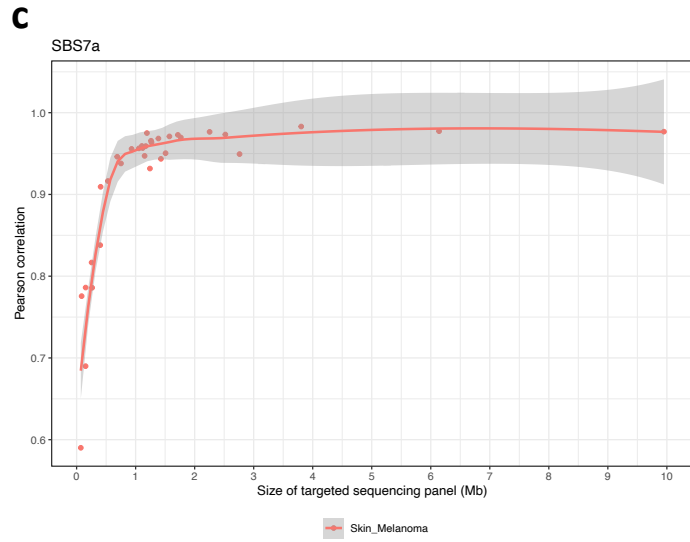
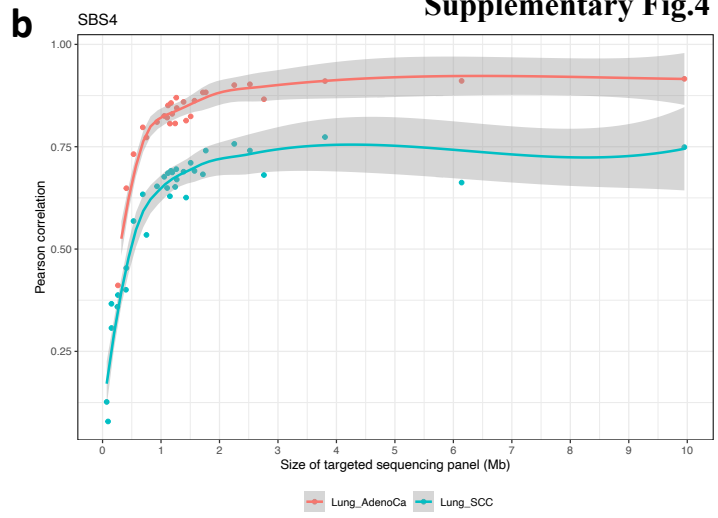
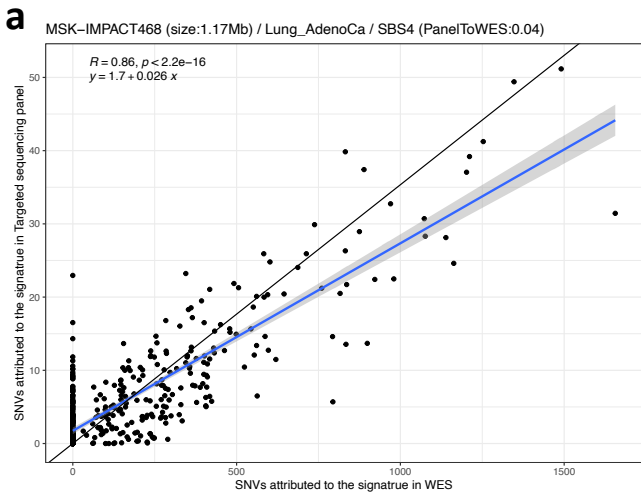


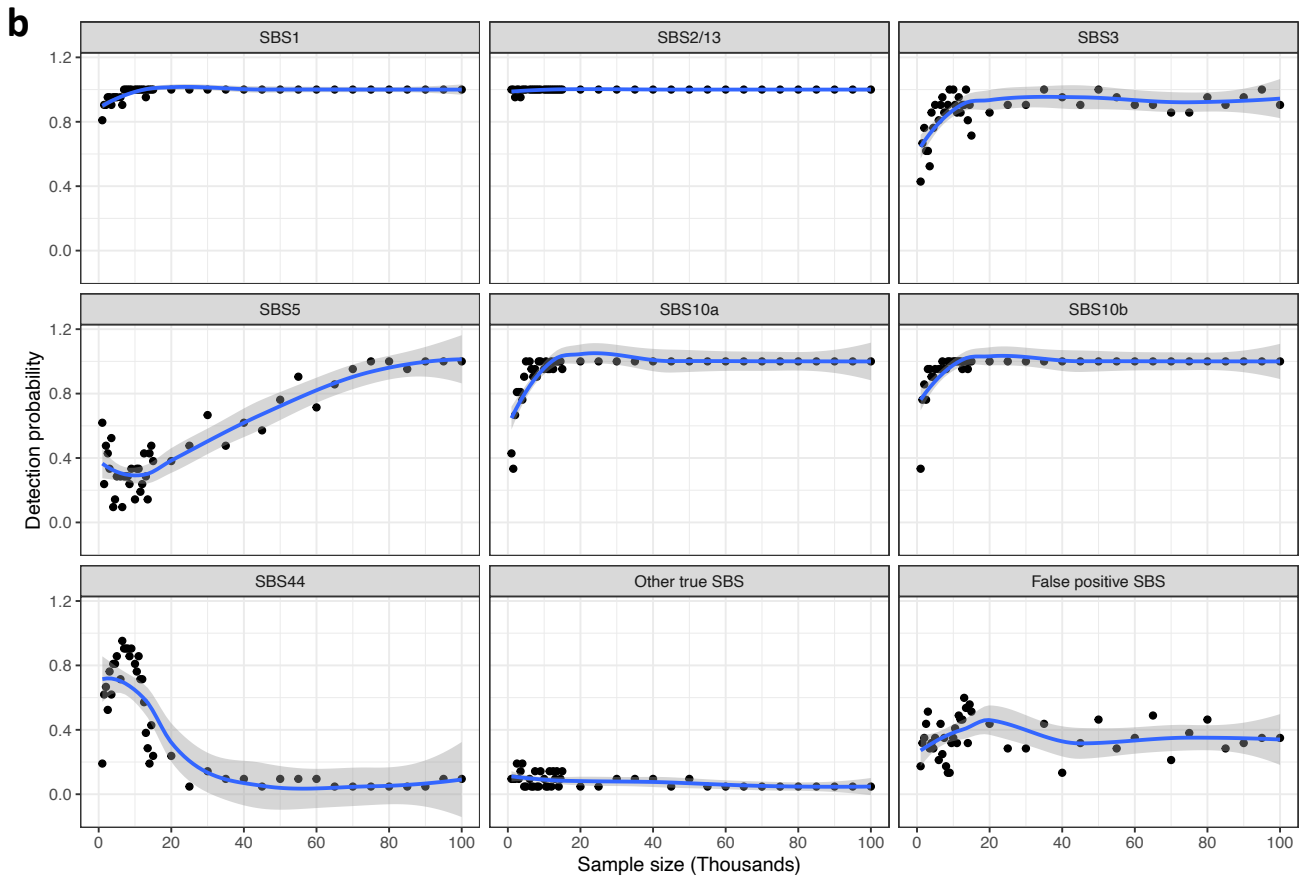
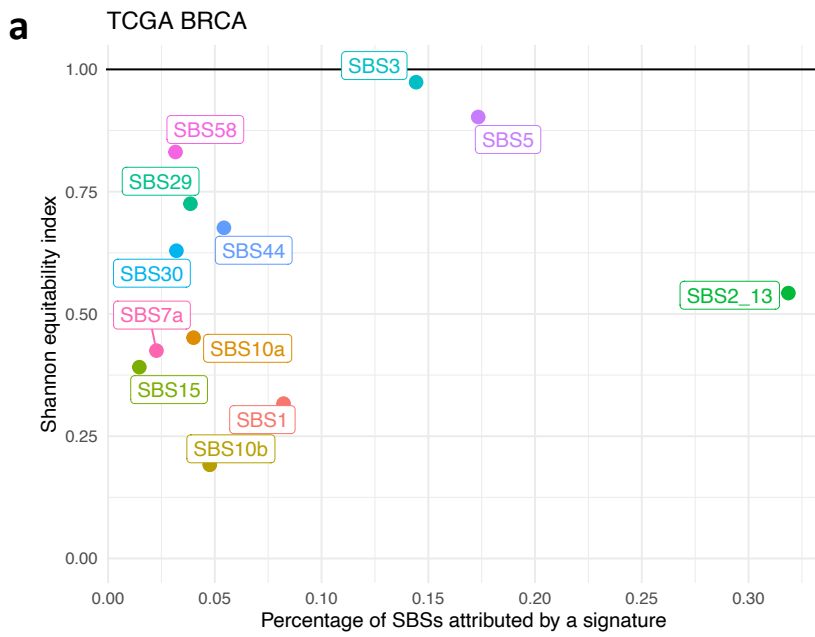


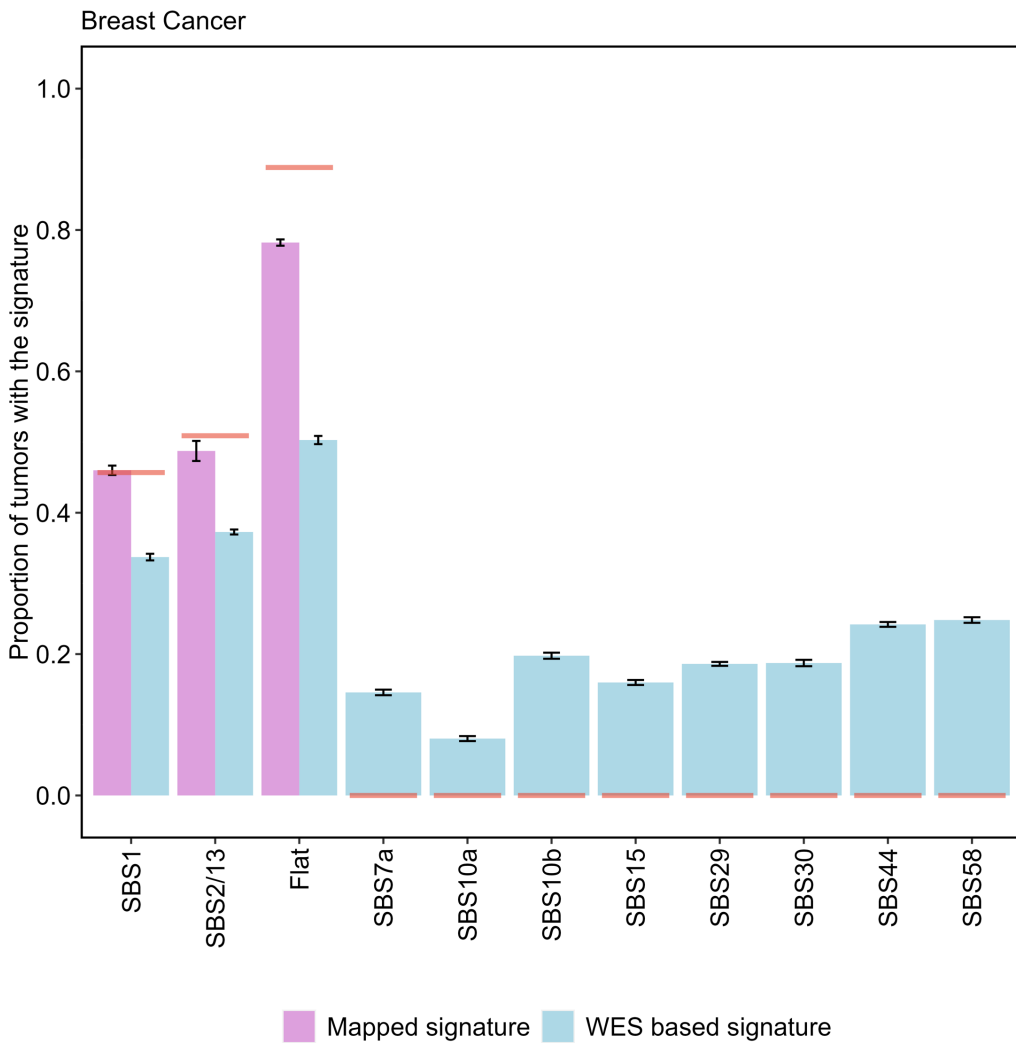


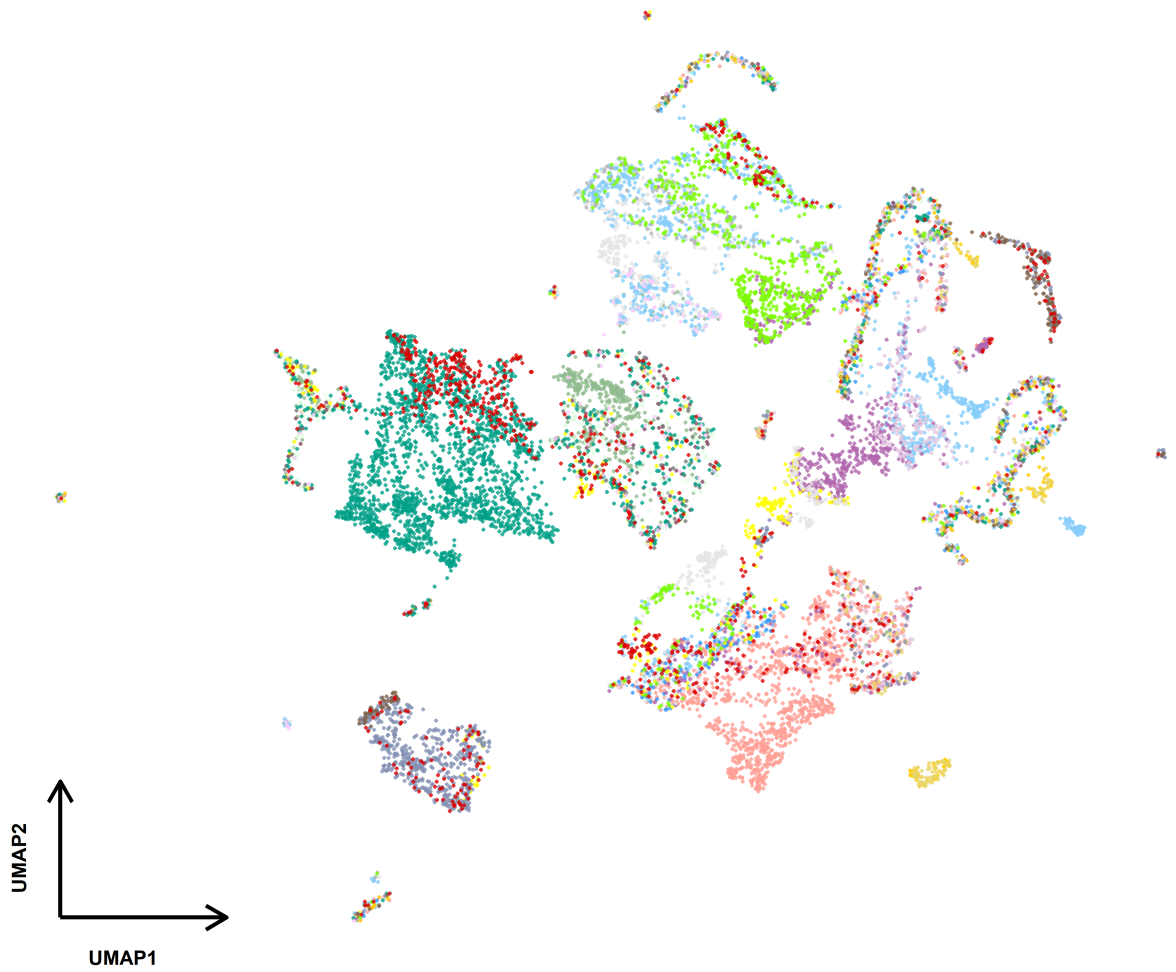
c



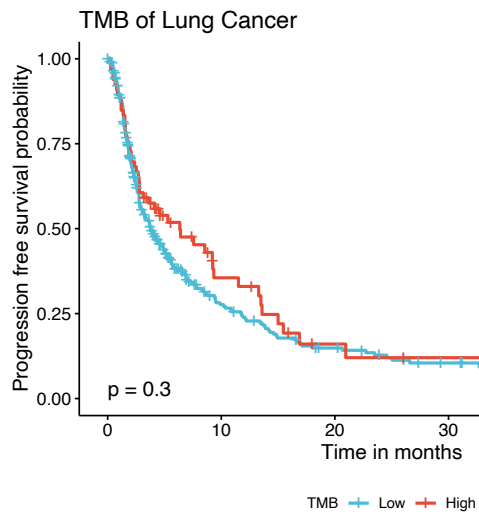








- | | | |
|-------------------------------------|------------------------------------|--|
| ● Bladder Cancer (587) | ● Bowel Cancer-Colorectal (1576) | ● Bowel Cancer-Other (55) |
| ● Breast Cancer (491) | ● Cancer of Unknown Primary (923) | ● CNS or Brain Cancer-Glioma (1436) |
| ● CNS or Brain Cancer-Other (53) | ● Esophagogastric Cancer (256) | ● Gynecologic Cancer-Endometrial (758) |
| ● Gynecologic Cancer-Other (126) | ● Gynecologic Cancer-Ovarian (373) | ● Head and Neck Cancer (400) |
| ● Hematologic Cancer-Lymphoid (714) | ● Hematologic Cancer-Myeloid (162) | ● Hepatobiliary Cancer (156) |
| ● Kidney Cancer (51) | ● Lung Cancer (2539) | ● Pancreatic Cancer (894) |
| ● Prostate Cancer (154) | ● Rare Cancer (242) | ● Skin Cancer or Melanoma (784) |
| ● Soft Tissue Cancer (212) | ● Thyroid Cancer (171) | |

a**b**