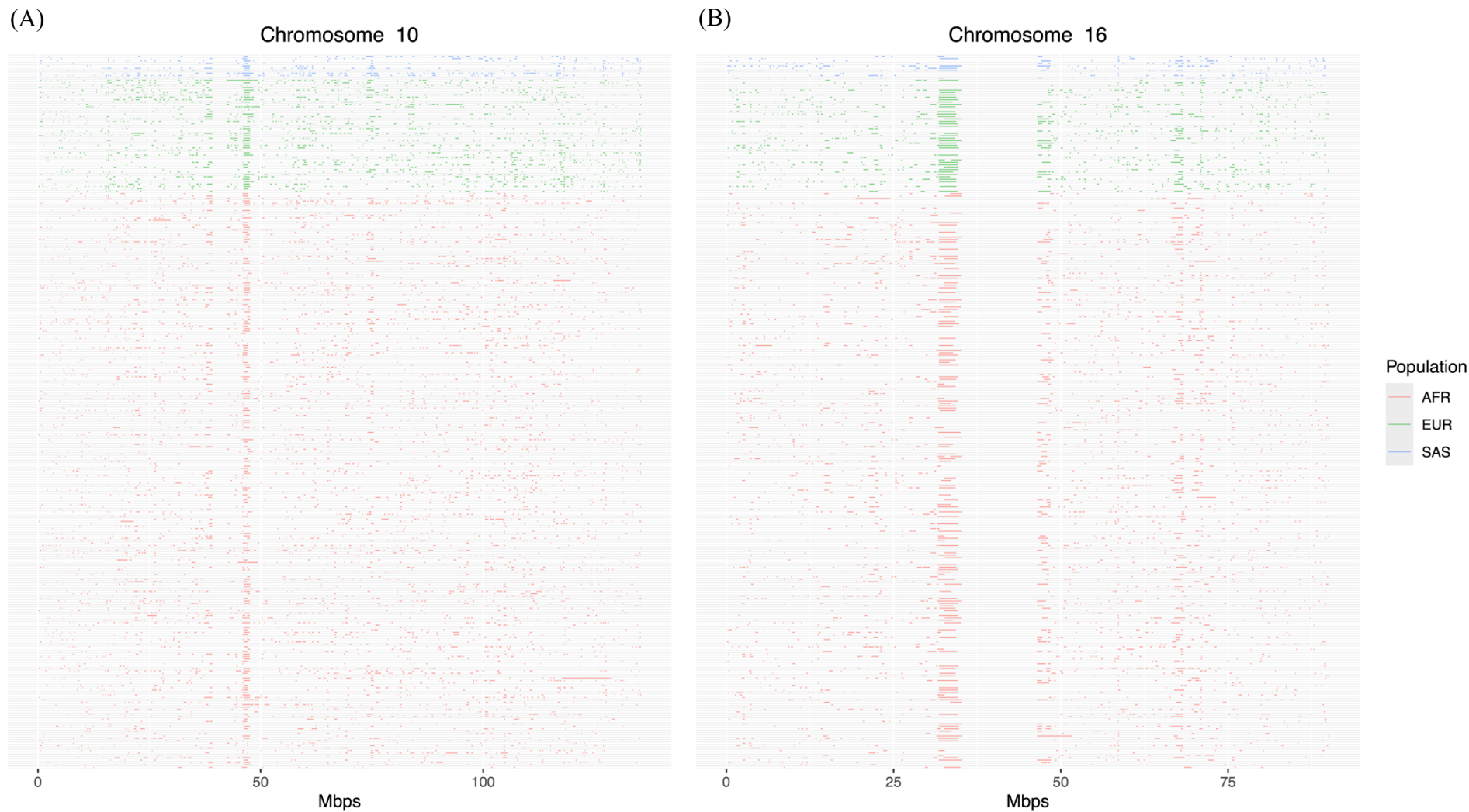


**Supplemental Materials for:**

**Genetic admixture predictors of fetal alcohol spectrum disorders (FASD) in the South African Cape Coloured population.**

R. Colin Carter, Zikun Yang, Tugba Akkaya-Hocagil, Sandra W. Jacobson, Joseph L. Jacobson, Neil C. Dodge, H. Eugene Hoyme, Steven H. Zeisel, Ernesta M. Meintjes, Caghan Kizil, Giuseppe Tosto



**Figure S1.** Runs of homozygosity (ROHs) with high overlap, color-coded by ancestral origin, among 296 unrelated mothers in chromosomes 10 (A) and 16 (B). Ancestry designation was made if >80% of variants within the ROH traced back to a given ancestry.

**Table S1.** Average ancestral percentage (%) of samples by populations<sup>a</sup>

		<b>K</b>	<b>1</b>	<b>2</b>	<b>3</b>	<b>4</b>	<b>5</b>	<b>6</b>
		Study sample (SACC)	14.5	42.7	15.7	18.2	1.9	6.9
<b>REFERENCE POPULATIONS</b>	<b>AFRICAN</b>	Yoruba	99.3	0.7	0	0	0	0
		Mandenka	99.6	0	0	0.3	0	0
		Gambian	99.7	0	0	0.3	0	0
		Bantu South Africa	63	37	0	0	0	0
		Bantu Kenya	72.6	26	0.2	1.2	0	0
		San	0	100	0	0	0	0
	<b>EUROPEAN</b>	French	0.1	0	0.1	99.8	0	0
		British	0	0	0	100	0	0
		Italian	0	0	1.9	98.1	0	0
		Northern European	0	0	0	100	0	0
	<b>SOUTH ASIANS</b>	Bengali	0	0	94.3	1.9	2.4	1.4
	<b>EAST ASIANS</b>	Chinese South	0	0	0	0	79	21
		Chinese North	0	0	0.5	0.2	87.9	11.5
		Cambodian	0	0	10.2	0	23.8	66
		Vietnamese (Kinh)	0	0	0.1	0.1	14	85.7
Lahu		0	0	0	0	34.3	65.7	

<sup>a</sup>Results were computed by ADMIXTURE (1) with the number of ancestries set at 6 (K=6) using uncorrelated genetic markers in 352 unrelated SACC individuals and HGDP and 1000G African, European, South Asian, and East Asian reference populations.

**Table S2.** Ancestry proportion comparisons between Cape Malay and all other Cape Coloured participants<sup>a</sup>

	Cape Malay		All other Cape Coloured		<i>p</i> <sup>b</sup>
	<i>n</i>	<i>M</i> (SD)	<i>n</i>	<i>M</i> (SD)	
<u>Maternal Ancestry</u>					
% African	63	42.9 (17.2)	218	54.9 (19.4)	<0.001
% European	63	28.0 (11.1)	218	24.9 (13.0)	0.053
% South Asian	63	23.5 (8.9)	218	16.3 (8.5)	<0.001
% East Asian	63	5.8 (2.9)	218	4.0 (2.5)	<0.001
<u>Child Ancestry</u>					
% African	55	41.2 (12.7)	202	53.2 (18.0)	<0.001
% European	56	28.9 (9.0)	202	25.3 (11.2)	0.013
% South Asian	56	24.4 (6.8)	202	17.3 (8.0)	<0.001
% East Asian	56	5.5 (2.5)	202	4.2 (2.4)	<0.001

<sup>a</sup>Cape Malay status missing for 28 mother-child dyads.<sup>b</sup>From independent samples *t*-tests**Table S3.** Correlations between 4-group ancestry<sup>a</sup> and runs of homozygosity among 296 unrelated mothers<sup>b</sup>

Ancestry	Homozygosity
% African	-0.89***
% European	0.78***
% South Asian	0.70***
% East Asian	0.49***

\*\*\**p* < .001.<sup>a</sup>Estimated with ELAI (2) method.<sup>b</sup>Values are Pearson *r*.**Table S4.** Prevalence of deleterious variants in the 10 most overlapping runs of homozygosity among 296 unrelated mothers

Local Ancestry	# of mothers with ROH	Total # of deleterious variants	Poisson <i>p</i>
AFR	27	19	0.023
non-AFR	64	21	

## REFERENCES

1. Alexander DH, Novembre J, Lange K. Fast model-based estimation of ancestry in unrelated individuals. *Genome Res* 2009;19(9):1655-64. doi: 10.1101/gr.094052.109.
2. Guan Y. Detecting structure of haplotypes and local ancestry. *Genetics* 2014;196(3):625-42. doi: 10.1534/genetics.113.160697.