

1 **Title: Effectiveness of an Impella versus intra-aortic balloon pump in patients who received**
2 **extracorporeal membrane oxygenation**

3

4 **Authors:** Yuji Nishimoto¹; Hiroyuki Ohbe²; Jun Nakata³; Toru Takiguchi⁴; Mikio Nakajima^{2,5};
5 Yusuke Sasabuchi⁶; Toshiaki Isogai^{2,7}; Hiroki Matsui²; Yukihiro Sato⁸; Tetsuya Watanabe¹; Takahisa
6 Yamada¹; Masatake Fukunami¹; Hideo Yasunaga².

7

8 **Affiliations:** ¹Division of Cardiology, Osaka General Medical Center, Osaka, Japan. ²Department of
9 Clinical Epidemiology and Health Economics, School of Public Health, The University of Tokyo,
10 Tokyo, Japan. ³Division of Cardiovascular Intensive Care, Nippon Medical School, Tokyo, Japan.
11 ⁴Department of Emergency and Critical Care Medicine, Nippon Medical School, Tokyo, Japan.
12 ⁵Emergency and Critical Care Center, Tokyo Metropolitan Hiroo Hospital, Tokyo, Japan.
13 ⁶Department of Real-world Evidence, Graduate School of Medicine, The University of Tokyo, Tokyo,
14 Japan. ⁷Department of Cardiology, Tokyo Metropolitan Tama Medical Center, Tokyo, Japan.
15 ⁸Department of Cardiology, Hyogo Prefectural Amagasaki General Medical Center, Amagasaki,
16 Japan.

17

18 **Address for correspondence:** Hiroyuki Ohbe

19 Department of Clinical Epidemiology and Health Economics, School of Public Health, The
20 University of Tokyo, 7-3-1 Hongo, Bunkyo-ku, Tokyo 1130033, Japan

21 TEL: +81-3-5841-1887 FAX: +81-3-5841-1888 E-mail: hohbey@gmail.com

22

23

24

25

NOTE: This preprint reports new research that has not been certified by peer review and should not be used to guide clinical practice.

1
2
3
4
5
6
7
8
9
10
11
12
13
14
15
16
17
18
19
20
21
22
23
24
25

Abstract

Background: Previous studies have suggested that left ventricular (LV) unloading with an intra-aortic balloon pump (IABP) or percutaneous ventricular assist device (Impella) in combination with extracorporeal membrane oxygenation (ECMO) is associated with lower mortality; however, it is unclear which is better. This study aimed to evaluate the effectiveness of LV unloading with an Impella versus IABP on in-hospital mortality and other clinical outcomes.

Methods: Using the Japanese Diagnosis Procedure Combination database from September 28, 2016, to March 31, 2022, we identified inpatients who received an Impella or IABP in combination with ECMO (ECPella or ECMO+IABP group, respectively). The primary outcome was in-hospital mortality and the secondary outcomes were the length of hospital stay, length of ECMO, total hospitalization cost, and complications. Propensity score matching was performed to compare the outcomes between the groups.

Results: Of 14,525 eligible patients, 603 (4.2%) received ECPella and 13,922 (96%) received ECMO+IABP. After propensity score matching, there was no significant difference in in-hospital mortality between the two groups (58.9% versus 56.6%; risk difference, 2.3%; 95% confidence interval, -3.9% to 8.5%). The ECPella group had a longer hospital stay, higher total hospitalization cost, and more frequent major bleeding, vascular complications, and renal replacement therapy during hospitalization than the ECMO+IABP group.

Conclusions: This nationwide inpatient database study showed that ECPella was not associated with a survival benefit but was associated with a longer hospital stay, higher total hospitalization cost, and more complications than ECMO+IABP.

Keywords: cardiogenic shock; mechanical circulatory support; extracorporeal membrane oxygenation; intra-aortic balloon pumping; heart-assist device

1

2 **Introduction**

3 Venoarterial extracorporeal membrane oxygenation (ECMO) provides strong hemodynamic support
4 to patients with cardiogenic shock through retrograde aortic blood flow in addition to oxygenation;¹
5 however, even the latest evidence does not support a survival benefit with the routine use of ECMO
6 in patients with cardiogenic shock.^{2,3} Potential reasons may include bleeding complications,
7 peripheral vascular ischemia, pulmonary edema, and myocardial ischemia induced by an increased
8 left ventricular (LV) afterload due to a strong retrograde aortic blood flow.¹

9 Previous studies have suggested that LV unloading with an intra-aortic balloon pump
10 (IABP) or percutaneous ventricular assist device (Impella) in combination with ECMO is associated
11 with a lower mortality.⁴⁻⁸ Those studies primarily focused on the effectiveness of LV unloading with
12 an IABP or Impella, using patients who received ECMO alone as controls. The IABP reduces the LV
13 afterload and provides indirect LV unloading through a negative systolic pressure in the descending
14 aorta,⁹ whereas the Impella can directly decrease the LV overload and restore the pulmonary flow in
15 patients with ECMO who present with severe LV dysfunction.¹⁰ No randomized controlled trial
16 compared the outcomes of using the Impella versus IABP in combination with ECMO. A recent
17 meta-analysis of seven small-scale observational studies showed no survival benefit of ECPella as
18 compared to ECMO+IABP; however, those studies had a high heterogeneity and the results of the
19 meta-analysis were underpowered to assess the comparative effectiveness.¹¹ It remains unclear
20 whether differences in the device characteristics between the IABP and Impella affect the clinical
21 outcomes in patients with ECMO who require LV unloading. Therefore, the present study aimed to
22 evaluate the effectiveness of LV unloading with an Impella versus IABP on the in-hospital mortality
23 and other clinical outcomes, using a nationwide inpatient database in Japan.

24

25 **Methods**

1 ***Design and Ethical statement***

2 This was a retrospective cohort study using an inpatient administrative database, and the study
3 conformed to the RECORD reporting guidelines.¹² This study was conducted in accordance with the
4 amended Declaration of Helsinki and was approved by the Institutional Review Board of The
5 University of Tokyo (approval number, 3501-(5); 19 May 2021). Because the data were anonymous,
6 the Institutional Review Board waived the requirement for informed consent.

7

8 ***Data source***

9 We used the Japanese Diagnosis Procedure Combination inpatient database, which contained
10 administrative claims data and discharge abstracts from more than 1,500 acute care hospitals and
11 covers approximately 90% of all tertiary emergency hospitals in Japan.¹³ The database includes the
12 following patient-level data for all hospitalizations: age, sex, diagnoses (main diagnosis,
13 admission-precipitating diagnosis, most resource-consuming diagnosis, second-most
14 resource-consuming diagnosis, comorbidities present at admission, and complications arising after
15 admission) recorded with the *International Classification of Diseases, 10th Revision (ICD-10)* codes,
16 daily procedures recorded using Japanese medical procedure codes, daily drug administration, and
17 discharge status.¹³ A previous validation study showed that the specificity of the recorded diagnoses
18 in the database exceeded 96%, the sensitivity of the diagnoses ranged from 50% to 80%, and the
19 specificity and sensitivity of the procedures both exceeded 90%.¹⁴

20

21 ***Study population***

22 We identified all patients who received ECMO during hospitalization from September 28, 2016, to
23 March 31, 2022. September 28, 2016, was the date when the Impella was approved for
24 reimbursement under the national health insurance in Japan. We excluded patients aged <18 years
25 and those who had received neither an Impella nor IABP within 2 days before or after the ECMO

1 initiation. All patients were followed up until they died or were discharged from the hospital.

2

3 ***Treatment groups***

4 Patients who received an Impella within 2 days before or after the ECMO initiation were defined as
5 the ECMO+Impella (ECPella) group. Patients who received IABP within 2 days before or after the
6 ECMO initiation were defined as the ECMO+IABP group. Patients who received both an Impella
7 and IABP within 2 days before or after the ECMO initiation were assigned to the group with the later
8 initiation date of the Impella or IABP, or defined as the ECPella group if the Impella or IABP was
9 initiated on the same day.

10

11 ***Outcomes***

12 The primary outcome was in-hospital mortality. The secondary outcomes were the length of hospital
13 stay, length of ECMO, total hospitalization cost, and complications including major bleeding, an
14 ischemic stroke, vascular complications, and renal replacement therapy during hospitalization. Major
15 bleeding was defined as the presence of either intracranial bleeding, intraspinal bleeding, pericardial
16 hematomas, intra-abdominal or retroperitoneal hematomas, intra-articular bleeding, intraocular
17 bleeding, or compartment syndrome, which was in accordance with the International Society of
18 Thrombosis and Haemostasis definition.¹⁵ Ischemic stroke was defined as the presence of cerebral
19 infarction or transient ischemic attack. Vascular complications were defined as an injury to a blood
20 vessel, noncoronary artery dissection, acquired arteriovenous fistula, acute limb thrombosis, and
21 hemorrhage and/or hematoma following a circulatory system procedure.¹⁶ Those outcomes are
22 defined by the ICD-10 codes listed in **Supplemental Table S1**.

23

24 ***Covariates***

25 The covariates were the fiscal year upon admission, age, sex, smoking history, body mass index upon

1 admission, Japan Coma Scale upon admission,¹⁷ Charlson comorbidity index score, comorbidity of
2 peripheral vascular diseases, physical function measured by the Barthel index score upon
3 admission,¹⁸ cognitive function before admission, home medical care before admission, place before
4 admission, ambulance use, primary diagnoses upon admission, extracorporeal cardiopulmonary
5 resuscitation (ECPR), interventions (percutaneous coronary intervention, coronary artery bypass
6 grafting, surgical valve procedures, or percutaneous valve procedures) before ECMO initiation,
7 organ failure support on the day of the ECMO initiation other than ECMO and mechanical
8 ventilation,¹⁹ and hospital characteristics (teaching hospital, tertiary emergency hospital, and annual
9 hospital volume of ECMO). The primary diagnosis upon admission was defined when it appeared as
10 a main diagnosis, admission-precipitating diagnosis, most resource-consuming diagnosis, or second
11 most resource-consuming diagnosis¹³, and is defined by the ICD-10 codes listed in **Supplemental**
12 **Table S1**. ECPR was defined as receiving chest compressions on the same day of the ECMO
13 initiation.

14

15 *Statistical analysis*

16 We performed a propensity score-matching analysis to compare the outcomes between the ECPella
17 and ECMO+IABP groups.²⁰ A multivariable logistic regression model using all the covariates listed
18 in **Table 1** was employed to compute the propensity scores for the patients in the ECPella group.
19 Then, we performed a one-to-one nearest-neighbor matching that randomly selected a patient from
20 the treatment group and subsequently paired that patient with the patient in the control group with the
21 closest propensity score.²¹ In the present study, each time a patient in the ECPella group was
22 identified, the one-to-one nearest-neighbor matching without replacement was performed for the
23 estimated propensity scores using a caliper width set at 20% of the standard deviation of the
24 propensity scores in the patients in the ECMO+IABP group for the exact same calendar year and
25 month.²⁰ To assess the performance of the matching, the covariates were compared using

1 standardized differences, with absolute standardized differences of $\leq 10\%$ considered to denote
2 negligible imbalances between the two groups.²² After the propensity score matching, the primary
3 and secondary outcomes for the two groups were assessed through a generalized linear model
4 accompanied by cluster-robust standard errors with hospitals as the clusters. Differences and their
5 95% confidence intervals were calculated with generalized linear models using the identity link
6 function, irrespective of the outcome types. For the 60-day in-hospital mortality, we also generated
7 Kaplan–Meier curves and performed log-rank tests in the matched cohort.

8 All analyses were performed using STATA/SE 17.0 software (StataCorp). Continuous
9 variables are presented as the mean and standard deviation, and categorical variables are presented as
10 the number and percentage. We considered all reported p-values as two-sided and a $p < 0.05$ as
11 statistically significant.

12

13 *Sensitivity analysis*

14 We performed two sensitivity analyses. First, we performed an overlap weighting analysis.²³ The
15 overlap weighting analysis emphasized the target population with the most overlap in the observed
16 characteristics between two groups. The differences and their 95% confidence intervals were
17 calculated with weighted generalized linear models to compare the outcomes. Second, patients who
18 received ECPR may have had a substantially different clinical course in terms of post-cardiac arrest
19 syndrome and the prognosis as compared to those with cardiogenic shock who did not receive ECPR.
20 Therefore, we performed sensitivity analyses excluding the patients who received ECPR.

21

22 **Results**

23 *Patient characteristics and outcomes*

24 During the study period, we identified 14,525 eligible patients from 661 hospitals (**Figure 1**). Of
25 those, 603 (4.2%) were identified as the ECPella group, and 13,922 (96%) as the ECMO+IABP

1 group. Of the overall 661 hospitals, Impella was used in 155 (23%).

2 **Table 1** shows the patient characteristics before and after propensity score matching. In the
3 overall cohort, the mean age was 65 years, and 76% were men. Before the propensity score matching,
4 the patients in the ECPella group tended to be younger, had a poor physical and cognitive function
5 upon admission, were transferred from another hospital, had cardiomyopathy, received blood
6 transfusions and dobutamine, and were admitted to a tertiary emergency hospital with a high annual
7 hospital volume of ECMO. In contrast, the patients in the ECMO+IABP group tended to have poor
8 consciousness, were admitted from home, had a cardiac arrest and ventricular tachycardia or
9 fibrillation, and required ECPR, dopamine, and adrenaline. One-to-one propensity score matching
10 created 603 matched pairs. The distributions of the propensity scores before and after the matching
11 are shown in **Supplementary Figures S1** and **S2**. After the propensity score matching, the patient
12 characteristics were well-balanced between the two groups (**Table 1**).

13 **Table 2** shows the outcomes before and after propensity score matching. The crude
14 in-hospital mortality was 58.9% in the ECPella group and 65.6% in the ECMO+IABP group. After
15 propensity score matching, there was no significant difference in in-hospital mortality between the
16 ECPella and ECMO+IABP groups (58.9% versus 56.6%; risk difference, 2.3%; 95% confidence
17 interval, -3.9% to 8.5%). A Kaplan–Meier analysis with the log-rank test showed no significant
18 difference in the 60-day in-hospital mortality between the two groups (P value = 0.114) (**Figure 2**).
19 The length of hospital stay was significantly longer in the ECPella group (mean 42.8 days versus
20 33.7 days; risk difference, 9.1 days; 95% confidence interval, 2.6 to 15.6 days). The total
21 hospitalization cost was also significantly higher in the ECPella group than in the ECMO+IABP
22 group (12,573,000 yen versus 6,857,000 yen; risk differences, 5,716,000 yen; 95% confidence
23 interval, 4,439,000 yen to 6,993,000 yen). Complications more frequently occurred in the ECPella
24 group than in the ECMO+IABP group, including major bleeding (4.0% versus 2.0%; risk difference,
25 2.0%; 95% confidence interval, 0.007% to 4.0%), vascular complications (4.1% versus 2.2%; risk

1 difference, 2.0%; 95% confidence interval, 0.04% to 3.9%), and renal replacement therapy during
2 hospitalization (50.6% versus 41.1%; risk difference, 9.5%; 95% confidence interval, 3.0% to
3 15.9%). There were no significant differences in the other secondary outcomes including the length
4 of ECMO (mean 3.9 days versus 3.3 days; risk difference, 0.6 days; 95% confidence interval, -0.8 to
5 2.0 days), and ischemic strokes (4.1% versus 4.1%; risk difference, 0.0%; 95% confidence interval,
6 -2.1% to 2.1%). The results of the sensitivity analyses, using an overlap weighting analysis, showed
7 similar results to those for the main analyses (**Table 3**).

8 **Supplementary Table S2** shows the results of the sensitivity analyses excluding patients
9 who received ECPR. After excluding 6,360 patients (44%) who received ECPR, there was no
10 significant difference in in-hospital mortality between the ECPella and ECMO+IABP groups (57.3%
11 versus 50.9%; risk difference, 6.5%; 95% confidence interval, -0.2% to 13.2%). The results of the
12 secondary outcomes were also consistent with the main analyses.

13

14 **Discussion**

15 To the best of our knowledge, this nationwide cohort study had the largest number of patients among
16 the studies comparing ECPella versus ECMO+IABP. There was no significant difference in
17 in-hospital mortality between the ECPella and ECMO+IABP groups. Meanwhile, ECPella was
18 significantly associated with a longer hospital stay, higher total hospitalization cost, and more
19 complications than ECMO+IABP.

20 The present study found no survival benefit of ECPella as compared to ECMO+IABP. This
21 was consistent with the results of the previous studies.^{8,11} One of those studies, from the
22 Extracorporeal Life Support Organization registry, showed a considerably higher proportion of
23 Impella use in combination with ECMO (33% versus 4.2%).⁸ The previous study performed a
24 propensity score-matching analysis and concluded ECPella as compared to ECMO+IABP was
25 associated with a similar survival in the 560 matched pairs.⁸ Randomized controlled trials comparing

1 the LV unloading strategies are certainly needed to reach any conclusions. To investigate the
2 comparative effectiveness of Impella or IABP use in combination with ECMO, future studies may
3 need to consider the following. First, the etiology of cardiogenic shock may be a key issue.
4 Underlying diseases with severe impairment of the LV contractility, such as fulminant myocarditis,
5 could receive a pathophysiological benefit from ECPella as a bridge to recovery;^{24,25} however, the
6 current number of cases could not substantiate this subgroup analysis. Indeed, the present study
7 included only 140/1,206 (11.6%) patients with myocarditis. Second, the relationship between the
8 procedural volume (i.e., learning curves) and outcomes should also be considered. Data are scarce
9 for Impella, but the association between the procedural volume and outcomes has been shown for
10 ECMO.²⁶ Hence, when involving data early after the approval of the Impella, as in the present study,
11 the survival benefit of ECPella may be underestimated. Finally, early recognition of cardiogenic
12 shock and its stabilization by an appropriate timing of mechanical circulatory support (MCS) device
13 use may be more critical than that in which an MCS device is used.^{27,28}

14 In the present study, the total hospitalization cost was approximately 1.8 times higher in the
15 ECPella group than in the ECMO+IABP group. This was partly because the cost of the Impella itself
16 was considerably higher than that of an IABP or ECMO; it was approximately 17 times higher than
17 an IABP and 7 times higher than ECMO, according to the national health reimbursement data in
18 Japan.²⁹ Moreover, a longer hospital stay and more complications including major bleeding, vascular
19 complications, and renal replacement therapy during hospitalization may have contributed to a
20 higher total hospitalization cost. A recent study, using the nationwide inpatient database in Japan, that
21 included patients who required MCS early after admission also showed higher medical costs for
22 ECPella than ECMO+IABP, potentially due to more frequent blood transfusions, a longer duration of
23 ventilator support, and a longer length of hospital stay.³⁰ In previous studies focusing on the temporal
24 trends before and after the approval of the Impella, the hospitalization cost in the Impella era was
25 higher than that in the pre-Impella era, especially in hospitals where the Impella was more frequently

1 used.^{31,32} Unplanned readmissions may be an important quality indicator in patients who received an
2 Impella, with limited previous studies showing a high incidence of a 30-day readmission of more
3 than 10%.³³ Unless the survival benefit and reduction in readmissions for ECPella as compared to
4 ECMO+IABP is confirmed, clinicians should be cautious about the patient selection for Impella use
5 in combination with ECMO for LV unloading.

6 Our results included some important clinical implications. First, the present study provided
7 no evidence of whether IABP or Impella was better for use in combination with ECMO, and
8 evidence of a longer hospital stay, higher total hospitalization cost, and more complications for
9 ECPella. This suggested that ECPella should be implemented in carefully selected patients. Second,
10 further studies are warranted to investigate the outcomes according to the etiology of the cardiogenic
11 shock, learning curves for Impella use, and readmissions in patients who received the Impella.

12 The present study had several limitations. First, the decision on whether to use an IABP or
13 Impella was at the individual clinician's discretion due to the nature of the present study using the
14 observational database, which led to confounding by indication. We attempted to control for the
15 measured confounding factors using the propensity score analyses; however, we were unable to
16 control for any possible unmeasured variables, such as the vital signs, laboratory data, or LV function.
17 Second, the present study was unable to identify whether patients initially received IABP or Impella
18 and then ECMO, or whether they initially received ECMO and then IABP or Impella for LV
19 unloading. In addition, we defined 152 patients (40%) who received Impella and IABP in
20 combination with ECMO on the same day as the ECPella group; however, some patients might have
21 been downgraded from Impella to IABP due to Impella-related complications. Therefore,
22 misclassifications may have led to a bias in our study. The order and combination of the MCS
23 devices depended on the changing severity of the cardiogenic shock, suggesting that it would be
24 difficult to accurately categorize those complex processes even if additional information were
25 available during hospitalization. Third, the present study was also unable to identify whether the

1 patients received an Impella 2.5, Impella CP, or Impella 5.0 in the ECPella group. Fourth, the
2 incidence of complications in the present study was considerably lower than in the previous
3 studies.^{8,11} Given that the sensitivity of the diagnosis might have been low in our database, there was
4 a possibility of underreporting complications. Finally, many patients in the present study received
5 vasoactive drugs including dopamine and adrenaline. That might have delayed the MCS initiation
6 and caution should be taken in interpreting our results.

7

8 **Conclusions**

9 The present study using a nationwide inpatient administrative database showed that ECPella
10 was not associated with any survival benefit but was associated with a longer hospital stay, higher
11 total hospitalization cost, and more complications as compared to ECMO+IABP.

12

13

14

15

16

17

18

19

20

21

22

23

24

25

1
2
3
4
5
6
7
8
9
10
11
12
13
14
15
16
17
18
19
20
21
22
23
24
25

Declarations

Ethics approval and consent to participate: This study was performed in accordance with the amended Declaration of Helsinki, and the Institutional Review Board of The University of Tokyo approved this study (approval number: 3501-(3); 25 December 2017).

Consent for publication: The review board waived the requirement for informed consent because of the anonymous nature of the data. No information describing the individual patients, hospitals, or treating physicians was obtained.

Availability of data and materials: The datasets analyzed during the current study are not publicly available owing to contracts with the hospitals providing the data to the database.

Competing interests: Drs. Nishimoto and Nakata received lecture fees from Abiomed Japan. All other authors declare that they have no conflict of interest.

Funding: This research was funded by grants from the Ministry of Health, Labour and Welfare, Japan, grant numbers 23AA2003 and 22AA2003.

Authors' contributions: **Yuji Nishimoto:** Conceptualization, Software, Formal analysis, Investigation, Writing - Original Draft; **Hiroyuki Ohbe:** Conceptualization, Methodology, Software, Formal analysis, Investigation, Writing - Review and Editing; **Jun Nakata:** Conceptualization, Methodology, Investigation, Writing - Review and Editing, Supervision; **Toru Takiguchi:**

1 Conceptualization, Methodology, Investigation, Writing - Review and Editing, Supervision; **Mikio**
2 **Nakajima**: Conceptualization, Investigation, Writing - Review and Editing, Supervision; **Yusuke**
3 **Sasabuchi**: Conceptualization, Investigation, Writing - Review and Editing, Supervision; **Toshiaki**
4 **Isogai**: Software, Formal analysis, Investigation, Data Curation; **Hiroki Matsui**: Software, Formal
5 analysis, Investigation, Data Curation; **Yukihito Sato**: Software, Investigation, Resources,
6 Supervision; **Tetsuya Watanabe**: Software, Investigation, Resources, Supervision; **Takahisa**
7 **Yamada**: Software, Investigation, Resources, Supervision; **Masatake Fukunami**: Software,
8 Investigation, Resources, Supervision; **Hideo Yasunaga**: Writing - Review and Editing, Supervision.
9 All authors read and approved the final manuscript.

10

11 **Acknowledgments**: We would like to express our gratitude to Mr. John Martin for his grammatical
12 assistance.

13

14

15

16

17

18

19

20

21

22

23

24

25

1
2
3
4
5
6
7
8
9
10
11
12
13
14
15
16
17
18
19
20
21
22
23
24
25

References

1. Chieffo A, Dudek D, Hassager C, et al. Joint EAPCI/ACVC expert consensus document on percutaneous ventricular assist devices. *European Heart Journal Acute Cardiovascular Care*. 2021;10:570–583.
2. Ostadal P, Rokyta R, Karasek J, et al. Extracorporeal Membrane Oxygenation in the Therapy of Cardiogenic Shock: Results of the ECMO-CS Randomized Clinical Trial. *Circulation*. 2023;147:454–464.
3. Thiele H, Zeymer U, Akin I, et al. Extracorporeal Life Support in Infarct-Related Cardiogenic Shock. *N Engl J Med*. 2023;389:1286–1297.
4. Russo JJ, Aleksova N, Pitcher I, et al. Left Ventricular Unloading During Extracorporeal Membrane Oxygenation in Patients With Cardiogenic Shock. *Journal of the American College of Cardiology*. 2019;73:654–662.
5. Schrage B, Becher PM, Bernhardt A, et al. Left Ventricular Unloading Is Associated With Lower Mortality in Patients With Cardiogenic Shock Treated With Venoarterial Extracorporeal Membrane Oxygenation: Results From an International, Multicenter Cohort Study. *Circulation*. 2020;142:2095–2106.
6. Bhatia K, Jain V, Hendrickson MJ, et al. Meta-Analysis Comparing Venoarterial Extracorporeal Membrane Oxygenation With or Without Impella in Patients With Cardiogenic Shock. *Am J Cardiol*. 2022;181:94–101.
7. Thevathasan T, Kenny MA, Krause FJ, et al. Left-ventricular unloading in extracorporeal cardiopulmonary resuscitation due to acute myocardial infarction - A multicenter study. *Resuscitation*. 2023;186:109775.

- 1 8. Grandin EW, Nunez JI, Willar B, et al. Mechanical Left Ventricular Unloading in Patients
2 Undergoing Venoarterial Extracorporeal Membrane Oxygenation. *J Am Coll Cardiol.*
3 2022;79:1239–1250.
- 4 9. Lüsebrink E, Binzenhöfer L, Kellnar A, et al. Venting during venoarterial extracorporeal
5 membrane oxygenation. *Clin Res Cardiol.* 2023;112:464–505.
- 6 10. Eliet J, Gaudard P, Zeroual N, et al. Effect of Impella During Veno-Arterial Extracorporeal
7 Membrane Oxygenation on Pulmonary Artery Flow as Assessed by End-Tidal Carbon Dioxide.
8 *ASAIO J.* 2018;64:502–507.
- 9 11. Gandhi KD, Moras EC, Niroula S, et al. Left Ventricular Unloading With Impella Versus
10 IABP in Patients With VA-ECMO: A Systematic Review and Meta-Analysis. *Am J Cardiol.*
11 2023;208:53–59.
- 12 12. Benchimol EI, Smeeth L, Guttman A, et al. The REporting of studies Conducted using
13 Observational Routinely-collected health Data (RECORD) statement. *PLoS Med.* 2015;12:e1001885.
- 14 13. Yasunaga H. Real World Data in Japan: Chapter II The Diagnosis Procedure Combination
15 Database. *ACE.* 2019;1:76–79.
- 16 14. Yamana H, Moriwaki M, Horiguchi H, Kodan M, Fushimi K, Yasunaga H. Validity of
17 diagnoses, procedures, and laboratory data in Japanese administrative data. *J Epidemiol.*
18 2017;27:476–482.
- 19 15. Schulman S, Angerås U, Bergqvist D, et al. Definition of major bleeding in clinical
20 investigations of antihemostatic medicinal products in surgical patients. *J Thromb Haemost.*
21 2010;8:202–204.
- 22 16. Lemor A, Dabbagh MF, Cohen D, et al. Rates and impact of vascular complications in
23 mechanical circulatory support. *Catheter Cardiovasc Interv.* 2022;99:1702–1711.
- 24 17. Shigematsu K, Nakano H, Watanabe Y. The eye response test alone is sufficient to predict
25 stroke outcome--reintroduction of Japan Coma Scale: a cohort study. *BMJ Open.* 2013;3:e002736.

- 1 18. Mahoney FI, Barthel DW. FUNCTIONAL EVALUATION: THE BARTHEL INDEX. *Md*
2 *State Med J.* 1965;14:61–65.
- 3 19. Ohbe H, Yamana H, Matsui H, Yasunaga H. Development and validation of a
4 procedure-based organ failure assessment model for patients in the intensive care unit: an
5 administrative database study. *Acute Med Surg.* 2021;8:e719.
- 6 20. Rosenbaum PR, Rubin DB. Constructing a Control Group Using Multivariate Matched
7 Sampling Methods That Incorporate the Propensity Score. *The American Statistician.* 1985;39:33–
8 38.
- 9 21. Austin PC. A critical appraisal of propensity-score matching in the medical literature
10 between 1996 and 2003. *Stat Med.* 2008;27:2037–2049.
- 11 22. Austin PC. Balance diagnostics for comparing the distribution of baseline covariates
12 between treatment groups in propensity-score matched samples. *Stat Med.* 2009;28:3083–3107.
- 13 23. Li F, Thomas LE, Li F. Addressing Extreme Propensity Scores via the Overlap Weights. *Am*
14 *J Epidemiol.* 2019;188:250–257.
- 15 24. Tominaga Y, Toda K, Miyagawa S, et al. Total percutaneous biventricular assist device
16 implantation for fulminant myocarditis. *J Artif Organs.* 2021;24:254–257.
- 17 25. Kawamura T, Toda K, Yoshioka D, et al. Less Invasive Left Ventricular Unloading With
18 Impella May Improve the Clinical Outcomes of Fulminant Myocarditis. *ASAIO J.* 2023;69:561–568.
- 19 26. Becher PM, Goßling A, Schrage B, et al. Procedural volume and outcomes in patients
20 undergoing VA-ECMO support. *Crit Care.* 2020;24:291.
- 21 27. Baran DA, Grines CL, Bailey S, et al. SCAI clinical expert consensus statement on the
22 classification of cardiogenic shock: This document was endorsed by the American College of
23 Cardiology (ACC), the American Heart Association (AHA), the Society of Critical Care Medicine
24 (SCCM), and the Society of Thoracic Surgeons (STS) in April 2019. *Catheter Cardiovasc Interv.*
25 2019;ccd.28329.

- 1 28. Naidu SS, Baran DA, Jentzer JC, et al. SCAI SHOCK Stage Classification Expert
2 Consensus Update: A Review and Incorporation of Validation Studies: This statement was endorsed
3 by the American College of Cardiology (ACC), American College of Emergency Physicians (ACEP),
4 American Heart Association (AHA), European Society of Cardiology (ESC) Association for Acute
5 Cardiovascular Care (ACVC), International Society for Heart and Lung Transplantation (ISHLT),
6 Society of Critical Care Medicine (SCCM), and Society of Thoracic Surgeons (STS) in
7 December 2021. *J Am Coll Cardiol*. 2022;79:933–946.
- 8 29. Nishimoto Y, Inohara T, Kohsaka S, et al. Changing Trends in Mechanical Circulatory
9 Support Use and Outcomes in Patients Undergoing Percutaneous Coronary Interventions for Acute
10 Coronary Syndrome Complicated With Cardiogenic Shock: Insights From a Nationwide Registry
11 in Japan. *J Am Heart Assoc*. 2023;e031838.
- 12 30. Nitta M, Nakano S, Kaneko M, Fushimi K, Hibi K, Shimizu S. In-Hospital Mortality in
13 Patients With Cardiogenic Shock Requiring Venous-Arterial Extracorporeal Membrane Oxygenation
14 With Concomitant Use of Impella vs. Intra-Aortic Balloon Pump - A Retrospective Cohort Study
15 Using a Japanese Claims-Based Database. *Circ J*. 2024, doi: 10.1253/circj.CJ-23-0758.
- 16 31. Amin AP, Spertus JA, Curtis JP, et al. The Evolving Landscape of Impella Use in the
17 United States Among Patients Undergoing Percutaneous Coronary Intervention With Mechanical
18 Circulatory Support. *Circulation*. 2020;141:273–284.
- 19 32. Nishimoto Y, Ohbe H, Matsui H, et al. Trends in Mechanical Circulatory Support Use and
20 Outcomes of Patients With Cardiogenic Shock in Japan, 2010 to 2020 (from a Nationwide Inpatient
21 Database Study). *Am J Cardiol*. 2023;203:203–211.
- 22 33. Kuchtaruk AA, Sparrow RT, Azzalini L, et al. Unplanned readmissions after Impella
23 mechanical circulatory support. *Int J Cardiol*. 2023;379:48–59.

24

25

1
2
3
4
5
6
7
8
9
10
11
12
13
14
15
16
17
18
19
20
21
22
23
24
25

Figure Legends

Figure 1. Patient flowchart

ECMO, extracorporeal membrane oxygenation; ECPella, combination of ECMO and Impella; IABP, intra-aortic balloon pump.

Figure 2. Kaplan–Meier curves for the 60-day in-hospital mortality

ECMO, extracorporeal membrane oxygenation; ECPella, combination of ECMO and Impella; IABP, intra-aortic balloon pump.

1
2
3
4

Table 1. Patient characteristics

	Before matching			After matching		
	ECPella (n = 603)	ECMO+IABP (n = 13,922)	SMD	ECPella (n = 603)	ECMO+IABP (n = 603)	SMD
Fiscal year upon admission, n (%)						
2016	0 (0.0)	1,291 (9.3)	-45.2	0 (0.0)	0 (0.0)	0
2017	16 (2.7)	2,845 (20.4)	-57.9	16 (2.7)	13 (2.2)	3.2
2018	47 (7.8)	2,826 (20.3)	-36.6	47 (7.8)	49 (8.1)	-1.2
2019	130 (21.6)	2,516 (18.1)	8.8	130 (21.6)	131 (21.7)	-0.4
2020	168 (27.9)	2,363 (17.0)	26.3	168 (27.9)	167 (27.7)	0.4
2021	242 (40.1)	2,081 (14.9)	58.7	242 (40.1)	243 (40.3)	-0.3
Age, years, mean (SD)	63.1 (14.4)	65.2 (14.1)	-14.8	63.1 (14.4)	63.5 (15.5)	-2.7
Men, n (%)	461 (76.5)	10,642 (76.4)	0.0	461 (76.5)	461 (76.5)	0
Smoking history, n (%)						
Nonsmoker	239 (39.6)	5,670 (40.7)	-2.2	239 (39.6)	237 (39.3)	0.7
Current/past smoker	206 (34.2)	4,914 (35.3)	-2.4	206 (34.2)	208 (34.5)	-0.7
Unknown	158 (26.2)	3,338 (24.0)	5.1	158 (26.2)	158 (26.2)	0
Body mass index upon admission, kg/m ² , n (%)						
<18.5	43 (7.1)	855 (6.1)	4.0	43 (7.1)	37 (6.1)	4.0
18.5–24.9	314 (52.1)	6,601 (47.4)	9.3	314 (52.1)	336 (55.7)	-7.3
25.0–29.9	137 (22.7)	3,344 (24.0)	-3.1	137 (22.7)	132 (21.9)	2.0
≥30.0	46 (7.6)	1,062 (7.6)	0.0	46 (7.6)	39 (6.5)	4.5
Missing data	63 (10.4)	2,060 (14.8)	-13.1	63 (10.4)	59 (9.8)	2.2
Japan Coma Scale upon admission, n (%)						
0 (alert)	310 (51.4)	6,153 (44.2)	14.5	310 (51.4)	283 (46.9)	9.0
1–3 (dizzy)	84 (13.9)	1,159 (8.3)	17.9	84 (13.9)	91 (15.1)	-3.3
10–30 (somnolent)	27 (4.5)	560 (4.0)	2.3	27 (4.5)	25 (4.1)	1.6
100–300 (coma)	182 (30.2)	6,050 (43.5)	-27.8	182 (30.2)	204 (33.8)	-7.8
Charlson comorbidity index score, mean (SD)	1.1 (1.2)	1.2 (1.3)	-2.4	1.1 (1.2)	1.3 (1.3)	-8.8
Comorbidity of peripheral vascular diseases, n (%)	16 (2.7)	438 (3.1)	-2.9	16 (2.7)	16 (2.7)	0
Physical function upon admission, n (%)						
Total/severe dependence (BI 0-60)	409 (67.8)	8,630 (62.0)	12.3	409 (67.8)	402 (66.7)	2.5
Slight/moderate dependence (BI 61-99)	13 (2.2)	385 (2.8)	-3.9	13 (2.2)	16 (2.7)	-3.2
Independent (BI = 100)	86 (14.3)	2,617 (18.8)	-12.2	86 (14.3)	77 (12.8)	4.4
Missing	95 (15.8)	2,290 (16.4)	-1.9	95 (15.8)	108 (17.9)	-5.8
Cognitive function before admission, n (%)						
No dementia	403 (66.8)	10,446 (75.0)	-18.1	403 (66.8)	398 (66.0)	1.8
Mild dementia	31 (5.1)	770 (5.5)	-1.7	31 (5.1)	33 (5.5)	-1.5
Moderate/severe dementia	21 (3.5)	469 (3.4)	0.6	21 (3.5)	29 (4.8)	-6.7
Missing	148 (24.5)	2,237 (16.1)	21.2	148 (24.5)	143 (23.7)	1.9
Home medical care before admission, n (%)	5 (0.8)	172 (1.2)	-4.0	5 (0.8)	10 (1.7)	-7.5
Place before admission, n (%)						
Home	473 (78.4)	12,736 (91.5)	-37.1	473 (78.4)	493 (81.8)	-8.3

It is made available under a [CC-BY-NC-ND 4.0 International license](https://creativecommons.org/licenses/by-nc-nd/4.0/).

Other hospitals	124 (20.6)	1,081 (7.8)	37.3	124 (20.6)	99 (16.4)	10.7
Nursing home	6 (1.0)	105 (0.8)	2.6	6 (1.0)	11 (1.8)	-7.0
Ambulance use, <i>n</i> (%)	474 (78.6)	10,512 (75.5)	7.4	474 (78.6)	487 (80.8)	-5.4
Primary diagnosis, <i>n</i> (%)						
Acute coronary syndrome	335 (55.6)	7,846 (56.4)	-1.6	335 (55.6)	341 (56.6)	-2.0
Cardiac arrest	94 (15.6)	3,570 (25.6)	-25.0	94 (15.6)	115 (19.1)	-9.2
Ventricular tachycardia or fibrillation	50 (8.3)	1,586 (11.4)	-10.4	50 (8.3)	49 (8.1)	0.6
Heart failure	85 (14.1)	1,545 (11.1)	9.0	85 (14.1)	93 (15.4)	-3.7
Valve disease	27 (4.5)	761 (5.5)	-4.5	27 (4.5)	22 (3.6)	4.2
Myocarditis	74 (12.3)	629 (4.5)	28.2	74 (12.3)	74 (12.3)	0
Cardiomyopathy	46 (7.6)	495 (3.6)	17.8	46 (7.6)	44 (7.3)	1.3
Aortic disease	13 (2.2)	193 (1.4)	5.8	13 (2.2)	10 (1.7)	3.6
Extracorporeal cardiopulmonary resuscitation, <i>n</i> (%)	139 (23.1)	6,221 (44.7)	-46.9	139 (23.1)	140 (23.2)	-0.4
Interventions before ECMO, <i>n</i> (%)						
Percutaneous coronary intervention	306 (50.7)	7,616 (54.7)	-7.9	306 (50.7)	313 (51.9)	-2.3
Coronary artery bypass grafting	34 (5.6)	804 (5.8)	-0.6	34 (5.6)	39 (6.5)	-3.5
Surgical valve procedures	22 (3.6)	439 (3.2)	2.7	22 (3.6)	17 (2.8)	4.7
Percutaneous valve procedures	4 (0.7)	219 (1.6)	-8.7	4 (0.7)	3 (0.5)	2.2
Organ failure supports on ECMO initiation, <i>n</i> (%)						
Red blood cell transfusion	449 (74.5)	8,647 (62.1)	26.8	449 (74.5)	443 (73.5)	2.3
Fresh frozen plasma transfusion	349 (57.9)	6,634 (47.7)	20.6	349 (57.9)	354 (58.7)	-1.7
Platelet transfusion	147 (24.4)	2,175 (15.6)	22.0	147 (24.4)	134 (22.2)	5.1
Dopamine	123 (20.4)	4,701 (33.8)	-30.4	123 (20.4)	117 (19.4)	2.5
Dobutamine	313 (51.9)	6,191 (44.5)	14.9	313 (51.9)	299 (49.6)	4.6
Noradrenaline	467 (77.4)	10,654 (76.5)	2.2	467 (77.4)	462 (76.6)	2.0
Adrenaline	314 (52.1)	9,802 (70.4)	-38.3	314 (52.1)	308 (51.1)	2.0
Vasopressin	39 (6.5)	982 (7.1)	-2.3	39 (6.5)	43 (7.1)	-2.6
Renal replacement therapy	124 (20.6)	2,596 (18.6)	4.8	124 (20.6)	121 (20.1)	1.2
Hospital characteristics						
Teaching hospital, <i>n</i> (%)	594 (98.5)	13,676 (98.2)	2.2	594 (98.5)	593 (98.3)	1.3
Tertiary emergency hospital, <i>n</i> (%)	443 (73.5)	8,802 (63.2)	22.2	443 (73.5)	429 (71.1)	5.2
Annual hospital volume of ECMO, mean (SD)	69.4 (28.1)	52.5 (30.9)	57.2	69.4 (28.1)	70.1 (33.3)	-2.4

BI, Barthel Index; ECMO, extracorporeal membrane oxygenation; ECPella, combination of ECMO and Impella; IABP, intra-aortic balloon pump; SD, standard deviation; SMD, standardized mean difference.

Table 2. Outcomes before and after propensity score matching

	Before matching		After matching		Risk difference (95% CI)	P value
	ECPella (<i>n</i> = 603)	ECMO+IABP (<i>n</i> = 13,922)	ECPella (<i>n</i> = 603)	ECMO+IABP (<i>n</i> = 603)		
In-hospital mortality, <i>n</i> (%)	355 (58.9)	9,127 (65.6)	355 (58.9)	341 (56.6)	2.3 (-3.9, 8.5)	0.461
Length of hospital stay, days, mean (SD)	42.8 (60.0)	28.7 (42.8)	42.8 (60.0)	33.7 (42.0)	9.1 (2.6, 15.6)	0.006
Length of ECMO, days, mean (SD)	3.9 (7.5)	2.3 (8.3)	3.9 (7.5)	3.3 (13.3)	0.6 (-0.8, 2.0)	0.418
Total hospitalization cost, ×10 ³ yen, mean (SD)	12,573 (10,300)	5,679 (5,315)	12,573 (10,300)	6,857 (7,624)	5,716 (4,439, 6,993)	<0.001
Complications, <i>n</i> (%)						
Major bleeding	24 (4.0)	277 (2.0)	24 (4.0)	12 (2.0)	2.0 (0.007, 4.0)	0.049
Ischemic stroke	25 (4.1)	451 (3.2)	25 (4.1)	25 (4.1)	0.0 (-2.1, 2.1)	1.000
Vascular complications	25 (4.1)	270 (1.9)	25 (4.1)	13 (2.2)	2.0 (0.04, 3.9)	0.046
Renal replacement therapy during hospitalization	305 (50.6)	5,430 (39.0)	305 (50.6)	248 (41.1)	9.5 (3.0, 15.9)	0.004

CI, confidence interval; ECMO, extracorporeal membrane oxygenation; ECPella, combination of ECMO and Impella; IABP, intra-aortic balloon pump; SD, standard deviation.

Table 3. Overlap weighting

	After IPTW			
	ECPella	ECMO+IABP	Risk difference (95% CI)	P value
In-hospital mortality, %	60.1	57.8	2.4 (-2.3, 7.0)	0.324
Length of hospital stay, days, mean (SD)	41.1 (56.7)	33.9 (48.8)	7.2 (2.1, 12.4)	0.006
Length of ECMO, days, mean (SD)	3.8 (7.2)	2.9 (12.2)	0.9 (0.06, 1.8)	0.035
Total hospitalization cost, $\times 10^3$ yen, mean (SD)	12,133 (9,472)	6,758 (7,014)	5,375 (4,310, 6,440)	<0.001
Complications, %				
Major bleeding	3.9	2.5	1.5 (-0.2, 3.2)	0.091
Ischemic stroke	4.1	3.8	0.3 (-1.3, 1.9)	0.709
Vascular complications	4.1	2.4	1.7 (-0.2, 3.5)	0.078
Renal replacement therapy during hospitalization	49.8	40.5	9.3 (4.2, 14.5)	<0.001

CI, confidence interval; ECMO, extracorporeal membrane oxygenation; ECPella, combination of ECMO and Impella; IABP, intra-aortic balloon pump; SD, standard deviation.

31,486 patients who received ECMO during hospitalization from September 28, 2016 to March 31, 2022

16,961 patients were excluded:
977 patients under 18 years old
15,984 patients who had received neither Impella nor IABP within 2 days before or after the ECMO initiation

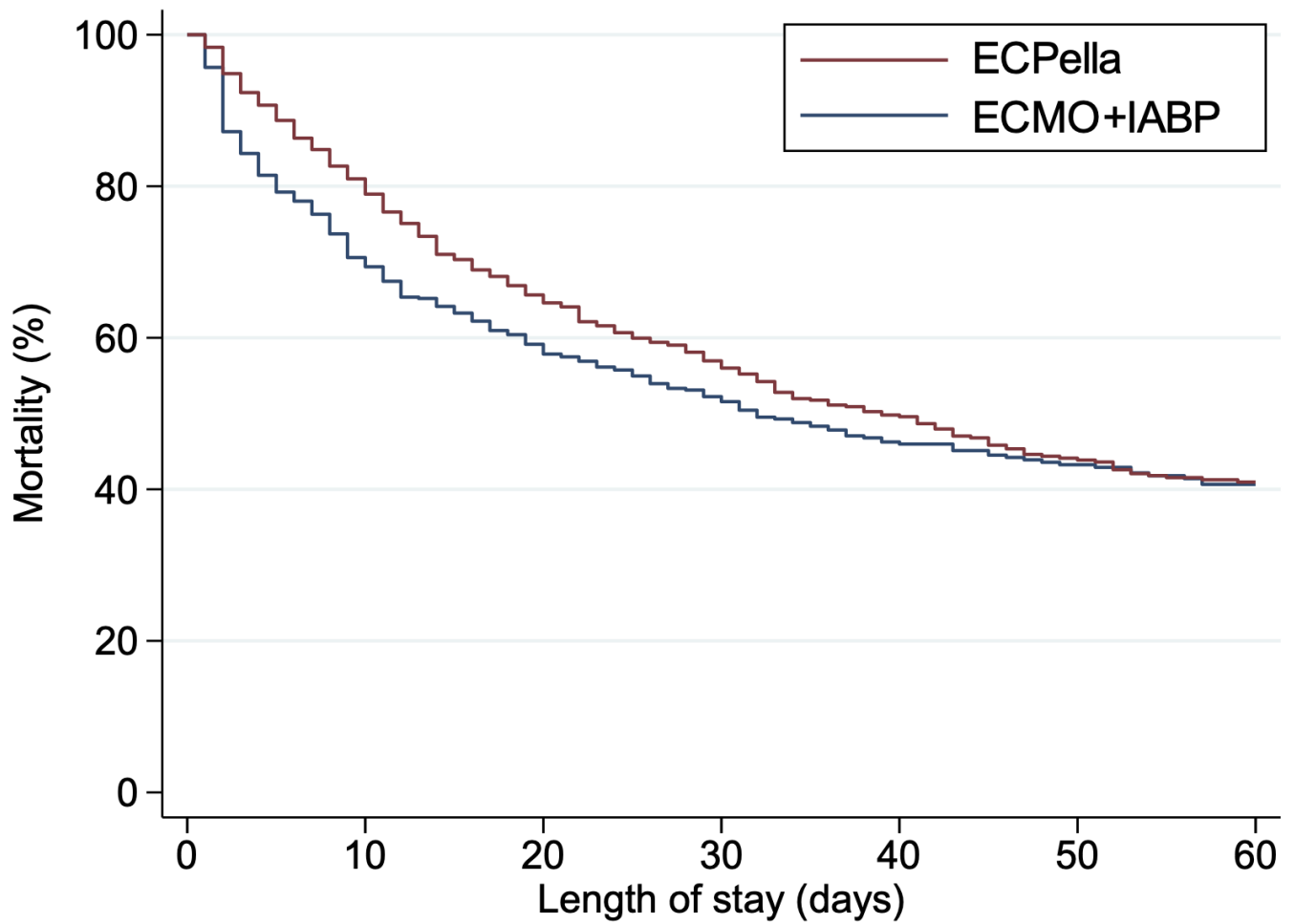
14,525 patients remained

603 patients in the
ECPella group

603 patients matched

13,922 patients in the
ECMO+IABP group

603 patients matched



Number at risk		0	10	20	30	40	50	60
ECPella	603	482	375	299	222	175	131	
ECMO+IABP	603	406	321	236	167	130	99	