

1 ¹⁷Applied Mathematics and Computational Science Graduate Group, University of Pennsylvania,
2 Philadelphia, PA 19104, USA.

3 ¹⁸Center for AI and Data Science for Integrated Diagnostics, Perelman School of Medicine, University of
4 Pennsylvania, Philadelphia, PA 19104, USA.

5 ¹⁹Penn Institute for Biomedical Informatics, Perelman School of Medicine, University of Pennsylvania,
6 Philadelphia, PA 19104, USA.

7 ²⁰Population Aging Research Center, University of Pennsylvania, Philadelphia, PA 19104, USA.

8 ²¹Institute for Translational Medicine and Therapeutics, University of Pennsylvania, Philadelphia, PA 19104,
9 USA.

10

11 **Corresponding authors:*

12 Hongtu Zhu (htzhu@email.unc.edu) and Bingxin Zhao (bxzhao@upenn.edu)

13

14 *#Lead contact:*

15 Bingxin Zhao

16 413 Academic Research Building

17 265 South 37th Street, Philadelphia, PA 19104.

18 E-mail: bxzhao@upenn.edu Phone: (215) 898-8222

1 **Abstract**

2 Sleep is crucial for overall physical and mental health, concerning organs such as the brain,
3 heart, eye, liver, kidney, and lung. Nonetheless, a thorough understanding of how sleep
4 relates to these organs, as well as their genetic bases, remains elusive. Here we conducted
5 a systematic mapping of sleep-organ connections, focusing on 623 multi-organ imaging
6 biomarkers and 10 sleep traits. Both phenotypic and genetic analyses uncovered robust
7 associations between sleep and the structure and function of multiple organs, such as
8 brain functions measured by functional magnetic resonance imaging (fMRI) and body
9 composition traits in abdominal MRI. Sleep and imaging traits had shared genetic
10 influences in 51 genomic loci, 23 of which had colocalized causal genetic effects.
11 Considering the extensive genetic overlaps between sleep and multi-organ imaging
12 biomarkers, we further described the patterns of genetic similarities between sleep and
13 50 diseases relevant to these organs. Notably, among all diseases examined, psychiatric
14 disorders consistently exhibited the strongest genetic correlations and causal links with
15 sleep. Mediation analysis further revealed that many of the identified sleep-imaging
16 connections were mediated by intra or inter-organ diseases. Overall, our study
17 demonstrates the broad implications of sleep on brain and body health, influenced in part
18 by shared genetic factors.

19

20 **Keywords:** Brain and body health; GWAS; Imaging genetics; Sleep; UK Biobank.

1 Sleep has a pivotal role in physical and mental health¹. Sleep traits (such as sleep duration)
2 and disorders (such as insomnia and narcolepsy) are associated with a wide spectrum of
3 neurodegenerative diseases, psychiatric disorders, cardiovascular diseases, metabolic
4 syndromes, as well as diseases related to the liver, lung, and kidney. For example, sleep
5 dysregulation and short sleep duration in midlife have been linked to a higher risk of
6 Alzheimer's disease and other dementias². Individuals with sleep disturbance were also
7 more likely to have mental and psychiatric disorders³, such as anxiety⁴ and schizophrenia⁵.
8 In addition, both insufficient and excess sleep duration may cause a higher incidence of
9 cardiovascular outcomes, including coronary heart disease⁶, atrial fibrillation⁷, and
10 stroke⁸. Sleep and circadian rhythm disorders, including obstructive sleep apnea (OSA)
11 and circadian rhythm, have an impact on metabolic syndromes such as obesity and type
12 2 diabetes⁹⁻¹¹. Moreover, OSA leads to insulin resistance and dyslipidemia, which play an
13 important role in the development of nonalcoholic fatty liver disease (NAFLD)^{12,13}. Sleep
14 complaints, including insomnia and OSA, were frequently encountered in patients with
15 chronic kidney disease^{14,15}, as well as lung diseases such as chronic obstructive pulmonary
16 disease (COPD)^{16,17} and asthma¹⁶. However, achieving a thorough understanding of sleep
17 from a pan-organ perspective remains a challenge. Two methodological approaches that
18 can be used to investigate the relationships between sleep and organ function are
19 imaging and genetics.

20

21 Magnetic resonance imaging (MRI) provides a noninvasive and comprehensive measure
22 of organ structure and function. Many imaging traits extracted from brain, cardiac, and
23 abdominal MRI are well-established clinical endophenotypes and have been widely used
24 in the prediction and early detection of complex diseases¹⁸⁻²⁴. In addition, retinal optical
25 coherence tomograph (OCT) imaging is a non-invasive approach that offers a high-
26 resolution view of the cross-sectional structure of the retina²⁵. Using MRI and OCT data,
27 several studies have examined the sleep-related changes in structures and functions of
28 the brain²⁶⁻³¹, heart^{32,33}, and eye³⁴⁻³⁶. For example, poor sleep quality is linked to reduced
29 hippocampal volume²⁶ and brain atrophy in the right superior frontal cortex²⁷, as well as
30 decreased functional connectivity in several networks, including those in the left middle
31 temporal and left inferior occipital regions²⁹. Cardiac MRI suggests that individuals with
32 OSA tend to exhibit lower ventricular volumes and increased ejection fractions³³.

1 Additionally, OSA is associated with thicker choroidal thickness and thinner mean RNFL
2 thickness in both eyes, as observed by OCT³⁴. Three major limitations of most existing
3 studies have been i) the limited study sample size, which was usually less than a few
4 hundred; ii) focusing on one organ, single imaging modality (or trait), and/or one sleep
5 trait, such as hippocampal atrophy²⁶ and sleep duration^{31,37,38}; and iii) a scarcity of
6 investigations on sleep-related changes in abdominal organs using MRI. It is known,
7 however, that large sample sizes are needed for imaging studies to detect small effect
8 sizes and produce reproducible findings³⁹. In addition, distinct imaging modalities and
9 sleep traits may be relevant to different diseases and health-related characteristics⁴⁰.
10 Therefore, a systematic analysis of multi-organ imaging data and multiple sleep traits
11 would provide a more extensive map of sleep-related structural and functional variations
12 across multiple organs.

13
14 Large-scale genome-wide association studies (GWAS) have shown that sleep disorders
15 and traits are heritable and have a polygenic genetic architecture⁴¹⁻⁵⁶. The sleep-
16 associated genetic variants are enriched for genes expressed in the brain and for
17 metabolic and psychiatric pathways⁵⁵. Genetic correlations between sleep traits and
18 brain-related disorders (such as depression and schizophrenia) have been discovered,
19 suggesting their shared neurogenetic basis⁵⁷. On the other hand, imaging traits are also
20 heritable and hundreds of associated genetic loci have been identified in recent GWAS<sup>58-
21 70</sup>. However, few studies have ever integrated these heritable multi-organ health indexes
22 and sleep traits to explore the genetic interactions among sleep, organ structure/function,
23 and associated clinical endpoints.

24
25 To better understand sleep's role in the brain and overall body health, we examined the
26 phenotypic and genetic connections between sleep and multi-organ imaging traits of the
27 brain, heart, abdomen (such as liver, kidney, and lung), and retina obtained from the UK
28 Biobank (UKB) study⁷¹. We used 623 traits derived from various imaging modalities,
29 including brain structural MRI⁶⁵, brain diffusion MRI⁶⁷, brain resting and task functional
30 MRI⁶⁹, cardiac MRI⁷², abdominal MRI^{22-24,73-79}, and retinal OCT⁷⁰ (**Table S1**). We examined
31 7 self-reported sleep-related phenotypes (sleep duration, getting up in the morning,
32 chronotype, sleeplessness/insomnia, nap during the day, narcolepsy, and snoring), along

1 with 3 accelerometer-derived measurements of sleep duration. We further examined the
2 genetic connections between sleep and 50 relevant diseases of the organs studied, with
3 113 sets of their publicly available GWAS summary statistics. The overview of our study is
4 presented in **Figure 1**.

5

6 **RESULTS**

7 **Sleep-imaging atlas: phenotypic and genetic connection patterns across multiple organs**

8 We examined the phenotypic associations between 10 sleep traits (7 self-reported and 3
9 accelerometer-derived) and a wide range of imaging traits across multiple organs,
10 including the brain, heart, eye, liver, lung, kidney, pancreas, and spleen, as well as body
11 muscle/fat composition. The discovery analysis used data from unrelated white British
12 subjects, and we reported significant associations at a 5% false discovery rate (FDR) using
13 the Benjamini-Hochberg procedure (P range = $(7.17 \times 10^{-87}, 1.60 \times 10^{-2})$, **Table S2**). To
14 examine the robustness and reproducibility of these findings, two approaches were used:
15 adjusting for a wide range of additional covariates based on literature and replicating the
16 analysis in an independent hold-out dataset (**Methods**). Below, we present associations
17 in the discovery sample that remained nominal significance level ($P < 0.05$) in both
18 approaches.

19

20 Among all brain MRI modalities, resting fMRI measures of brain function exhibited the
21 strongest phenotypic associations with sleep traits (**Figs. 2A and S1**). Resting fMRI traits
22 were associated with various sleep traits, particularly with sleep duration, narcolepsy, and
23 ease of getting up in the morning (**Fig. S2**). Both self-reported and accelerometer-derived
24 sleep duration traits had consistent associations with resting fMRI traits (β range = $(-0.17,$
25 $0.10)$, $P < 4.43 \times 10^{-4}$). Most of these associations were negative and predominantly linked
26 to the somatomotor and visual networks. The importance of somatomotor function in
27 various sleep stages is well-established, and there is a consistent correlation between
28 poor sleep quality, shorter sleep duration, and increased functional connectivity in the
29 somatomotor network among young individuals⁸⁰⁻⁸². In addition, increased resting
30 functional connectivity was primarily associated with an elevated risk of narcolepsy (β
31 range = $(-0.04, 0.07)$, $P < 9.24 \times 10^{-4}$) and a greater ease of getting up in the morning (β
32 range = $(-0.02, 0.05)$, $P < 6.23 \times 10^{-3}$). The resting fMRI traits linked to narcolepsy and the

1 ease of getting up were largely a subset of those associated with sleep duration, with the
2 somatomotor and visual networks again being emphasized, highlighting the crucial role
3 these two networks play in sleep regulation. In contrast to resting fMRI, task fMRI overall
4 had weaker connections with sleep, with the most significant associations being observed
5 with accelerometer-derived sleep duration (β range = (-0.08, -0.02), $P < 1.60 \times 10^{-2}$, **Fig. S3**).
6 Almost all significant associations with sleep duration traits were negative and showed a
7 substantial overlap with those identified in resting fMRI.

8

9 Associations detected in brain structural MRI traits, such as cortical thickness and regional
10 brain volumes, were mostly correlated with accelerometer-derived sleep duration (**Figs.**
11 **S4** and **S5**). For example, sleep duration was associated with the thickness of left/right
12 rostral anterior cingulate, inferior parietal, and insula (β range = (-0.07, 0.10), $P < 4.86 \times 10^{-3}$),
13 as well as the volume of left paracentral, postcentral, and hippocampus (β range = (-
14 0.05, 0.04), $P < 1.09 \times 10^{-2}$). For diffusion tensor imaging (DTI) parameters derived from
15 brain diffusion MRI, differences in white matter of the body of corpus callosum and genu
16 of corpus callosum tracts were linked to the ease of getting up in the morning (β range =
17 (0.021, 0.023), $P < 6.35 \times 10^{-4}$, **Fig. S6**), which was consistent with previous studies that
18 being an evening person exhibited differences in several white matter tracts, including
19 the corpus callosum^{83,84}.

20

21 Imaging traits from other organs also had strong connections with sleep, especially for
22 abdominal MRI traits. Abdominal MRI traits were associated with multiple sleep traits,
23 including sleep duration, insomnia, daytime napping, and chronotype (**Fig. S7**). Longer
24 sleep duration was linked to reduced renal parenchymal volume and liver volume (β range
25 = (-0.13, -0.04), $P < 1.45 \times 10^{-7}$), as well as multiple body and abdominal fat traits, such as
26 anterior/posterior thigh fat-free muscle volume (FFMV), anterior/posterior thigh muscle
27 fat infiltration, visceral adipose tissue volume (VAT), and subcutaneous fat volume (β
28 range = (-0.28, 0.22), $P < 2.63 \times 10^{-6}$). Many of these body/abdominal fat measurements
29 were also associated with other sleep traits. For example, an increase in abdominal fat
30 ratio, total abdominal adipose tissue index, weight to muscle ratio, and total trunk fat
31 volume was associated with elevated risk of insomnia, nap during the day, evening
32 chronotype (β range = (0.06, 0.11), $P < 1.47 \times 10^{-11}$), and difficulty getting up in the morning

1 (β range = (-0.11, -0.05), $P < 3.82 \times 10^{-8}$). Disrupted sleep patterns, particularly short/long
2 sleep durations, can lead to inflammation and metabolic disorders and further contribute
3 to obesity and an increased risk of liver cancer or chronic liver disease⁸⁵⁻⁸⁷. The
4 physiological processes of the kidneys were influenced by the circadian rhythms, and
5 increasing evidence indicated that abnormal sleep durations affect reduced renal
6 function and the development of kidney-related diseases⁸⁸⁻⁹⁰. Our findings shed light on
7 the potential mechanisms through which sleep duration impacts the onset of those
8 diseases related to the liver and kidney.

9

10 Furthermore, retinal OCT traits were associated with many sleep traits (**Fig. S8**). For
11 example, reduced average thickness between the inner nuclear layer (INL) to the retinal
12 pigment epithelium (RPE), as well as between the inner and outer photoreceptor
13 segments (ISOS) to RPE were associated with longer accelerometer-based and self-
14 reported sleep duration, napping during the day, and difficulty in getting up in the
15 morning (β range = (-0.04, 0.03), $P < 6.43 \times 10^{-3}$). Many previous studies have examined
16 the relationship between retinal thickness and OSA³⁴⁻³⁶, but there are relatively few
17 studies focused on other sleep traits. For cardiac MRI, we observed links between sleep
18 duration and myocardial-wall thickness at end-diastole, left atrium maximum volume,
19 and left atrium stroke volume (**Fig. S9**, β range = (-0.07, 0.03), $P < 6.40 \times 10^{-3}$), which was
20 consistent with previous findings that sleep duration is a potential factor for cardiac
21 remodeling^{91,92}.

22

23 To evaluate the sleep-imaging genetic correlations, we collected 34 sets of sleep GWAS
24 summary statistics from various studies (**Table S3**) and performed linkage disequilibrium
25 (LD) score regression⁹³ with our imaging traits. At a 5% FDR level (P range = (2.23×10^{-14} ,
26 5.08×10^{-4}), we observed similar patterns of genetic correlation to those observed in the
27 phenotypic association analyses, with most of the significant genetic correlations
28 concentrated in resting fMRI and abdominal MRI traits (**Figs. 2B, S10-S11, and Table S4**).
29 Resting fMRI had the most pronounced genetic correlation with sleep, especially for sleep
30 duration and narcolepsy. Increased resting functional connectivity in multiple networks,
31 such as the somatomotor, cingulo-opercular, and language, were genetically correlated
32 with shorter sleep duration and increased risk of narcolepsy (β range = (0.17, 0.44), $P <$

1 5.00×10⁻⁴). The genetic correlations with narcolepsy still existed after adjusting for body
2 mass index (BMI) (**Fig. 2B**). Accelerometer-based sleep duration had more genetic
3 correlations with resting fMRI than self-reported sleep duration traits. Compared with
4 resting fMRI, task fMRI had much weaker genetic correlations.

5

6 Genetic correlations were also observed for other brain imaging modalities. For example,
7 snoring was genetically correlated with the corticospinal tract and the inferior fronto-
8 occipital fasciculus (β range = (-0.20, -0.13), $P < 3.62 \times 10^{-4}$). The corticospinal tract is a
9 major neuronal pathway carrying movement-related information from the cerebral
10 cortex to the spinal cord. Impaired corticospinal tract was observed in poor cognitive
11 performance and patients with obstructive sleep spnea⁹⁴. Interestingly, after adjusting for
12 BMI, only one of these genetic correlations of snoring remained (**Fig. 2B**), indicating that
13 the majority of genetic associations between snoring and brain white matter might be
14 mediated by BMI. For regional brain volumes, insomnia was genetically correlated with
15 increased left/right caudate volume (β range = (0.14, 0.17), $P < 9.20 \times 10^{-5}$) as well as
16 decreased total brain volume (β range = (-0.132, -0.126), $P < 6.00 \times 10^{-5}$). The caudate is a
17 well-known functional region for sleep and modulates multiple sleep stages⁹⁵. We also
18 observed the negative genetic correlation between the volume of the right accumbens
19 and narcolepsy ($\beta = -0.14$, $P = 1.00 \times 10^{-4}$). The adenosine A_{2A} receptors and dopamine D_2
20 receptors in the accumbens area regulate the release of specific neurotransmitters that
21 suppress arousal and wakefulness, thereby promoting sleep⁹⁶⁻⁹⁸.

22

23 Similar to phenotypic association analysis, abdominal imaging traits were genetically
24 correlated with multiple sleep traits, including insomnia, sleep duration, and snoring.
25 Elevated VAT and total abdominal adipose tissue index were genetically correlated with
26 snoring (β range = (0.16, 0.19), $P < 2.16 \times 10^{-4}$). Different from the genetic correlations with
27 DTI parameters, all genetic correlations of snoring with abdominal imaging traits
28 continued to be significant after adjusting for BMI (**Fig. S11**). Insomnia and sleep duration
29 primarily showed genetic correlations with abdominal body muscle and fat. For example,
30 increased total and anterior/posterior thigh FFMV were genetically correlated with
31 decreased risk of insomnia and shorter accelerometer-derived and self-reported sleep
32 duration (β range = (-0.29, -0.13), $P < 4.72 \times 10^{-4}$). Previous studies have found that OSA

1 has a strong association with metabolic syndromes, such as excessive visceral fat and
2 insulin resistance^{99,100}. Accumulation of visceral fat was reported to be a key risk factor
3 for OSA among obese patients¹⁰¹. The genetic correlation between snoring and pancreas
4 fat fraction ($\beta = 0.19$, $P = 2.00 \times 10^{-4}$) was also observed. OSA has been hypothesized as a
5 potential risk factor for nonalcoholic fatty pancreatic disease, as the pancreas might be a
6 target for fat deposition due to hormone imbalances caused by intermittent hypoxia,
7 which is commonly experienced by OSA patients¹⁰².

8

9 In retinal OCT traits, we found a genetic correlation between snoring and a reduction in
10 average thickness between the ISOS and RPE of the outer subfield (β range = (-0.13, -
11 0.12), $P < 5.00 \times 10^{-4}$). Intermittent hypoxia may alter the structure of retinal and choroidal
12 blood vessels, potentially influencing the retinal and choroidal thickness³⁶. Additionally,
13 cardiac MRI traits showing significant genetic correlations with sleep largely related to
14 myocardial-wall thickness and left atrium volumes, overlapping with those phenotypically
15 linked to sleep. For example, increased regional myocardial-wall thickness at end-diastole
16 was associated with being an evening person (β range = (0.13, 0.19), $P < 5.00 \times 10^{-4}$).
17 Furthermore, snoring showed genetic correlations with decreased left atrium
18 maximum/minimum volume (β range = (-0.19, -0.16), $P < 5.00 \times 10^{-4}$).

19

20 A total of 57 sleep-imaging pairs were found to be significant in both phenotypic and
21 genetic analyses ($P < 3.21 \times 10^{-3}$, **Fig. 2C** and **Table S4**), with 45 out of these 57 pairs having
22 the same direction of effect sizes in both analyses. Within these 45 pairs, 19 correlations
23 were identified between sleep duration and resting fMRI traits. Moreover, both
24 phenotypic and genetic correlations between insomnia and sleep duration with multiple
25 abdominal MRI traits were observed, constituting 12 of the 45 pairs. For example, total
26 thigh FFMV and weight-to-muscle ratio had genetic and phenotypic associations with
27 both insomnia and accelerometer-derived sleep duration. Additionally, accelerometer-
28 derived sleep duration demonstrated correlations with VAT. Interestingly, we found
29 weaker phenotypic correlations compared to their genetic counterparts ($P < 1.35 \times 10^{-14}$).
30 Specifically, of the 45 pairs, 39 had smaller absolute phenotypic correlation estimates
31 compared to the absolute values of their corresponding genetic correlation estimates,
32 with a few exceptions being observed between accelerometer-derived sleep duration and

1 abdominal MRI traits (such as thigh FFMV, weight-to-muscle ratio, and abdominal fat
2 ratio). Overall, these results indicate the substantial shared genetic influences on the
3 sleep-imaging connections. Considering the polygenic nature of sleep and imaging traits,
4 we aim to identify the specific genomic regions contributing to their genetic similarities
5 in the following section.

6

7 **Characterizing sleep-imaging genetic overlaps in 51 genomic loci**

8 To understand the genetic co-architecture underlying sleep-imaging associations, we
9 characterized the genetic pleiotropy between sleep and multi-organ MRI traits using the
10 NHGRI-EBI GWAS catalog¹⁰³ (**Methods**). We found that a total of 51 independent genomic
11 loci showed shared genetic influences on both sleep and imaging traits across multiple
12 organs ($LD\ r^2 \geq 0.6$). Imaging-associated genetic variants were also reported in previous
13 GWAS for a wide range of sleep traits, including insomnia⁴⁵, chronotype¹⁰⁴, daytime nap⁴⁵,
14 sleep problems (depressive symptom)¹⁰⁵, getting up⁴⁵, hypersomnia¹⁰⁶, sleep duration⁴³,
15 and snoring⁵⁶ (**Fig. 3** and **Table S5**). Furthermore, we estimated the probability that the
16 sleep-imaging pairs shared causal genetic variants using the Bayesian colocalization
17 test¹⁰⁷. We considered pairs with a probability of shared causal variant (PPH4) > 0.8 to be
18 colocalized^{107,108}. Among all the pairs we tested, 23 out of the 51 regions showed evidence
19 of shared causal variants. A complete list of these 51 regions can be found in **Table S6** and
20 below we highlighted a few examples for each imaging modality.

21

22 Within different brain MRI modalities, DTI parameters and regional brain volumes
23 exhibited numerous shared genetic loci with sleep, especially with chronotype and
24 insomnia. There were 13 genomic loci where sleep-significant variants were associated
25 with DTI parameters ($LD\ r^2 \geq 0.6$). For example, the corpus callosum tract had shared
26 genetic effects with chronotype in the locus 1q25.2 (sleep index variant rs975025, **Fig. 4A**)
27 and with insomnia in the locus 9q22.31 (rs10761240, **Fig. S12**), which was consistent with
28 the involvement of corpus callosum in sleep regulation^{83,84}. These shared loci also partially
29 explained the associations observed between sleep and corpus callosum in our
30 phenotypic analysis. Moreover, the internal capsule had shared genetic influences with
31 chronotype in 6p22.2 (rs766406, **Fig. S13**), and with insomnia in 10p12.31 (rs12251016)
32 and 15q26.1 (rs176647, **Fig. S14**). For regional brain volumes, 18 genetic regions with

1 shared genetic influences on sleep were identified, of which three overlapped with DTI
2 parameters. Similar to DTI parameters, the majority of these shared genetic influences
3 were again linked to chronotype and insomnia. For example, in 2p11.2, the volume of the
4 brain stem had shared genetic influence with ease of getting up (rs1606803, **Fig. S15**) and
5 chronotype (rs11681299, **Fig. S16**). The variant rs11681299 is a brain expression
6 quantitative trait locus (eQTL) of *EIF2AK3*, which encodes PERK. PERK plays a critical role
7 in intracellular proteostatic mechanisms, essential for keeping normal sleep. It affects
8 sleep and wake behavior by impacting the expression of wake-promoting neuropeptide¹⁰⁹.
9 Furthermore, PERK is a risk factor for neurodegenerative diseases, such as Alzheimer's
10 disease, due to its contribution to the pathologic aggregation of misfolded tau proteins in
11 the nervous system¹¹⁰. Moreover, loci 11q14.1 and 18q21.2 harbor genes that influenced
12 putamen volume, including *DLG2* in 11q14.1 and *DCC* in 18q21.2. The shared genetic
13 effects were identified between putamen volume and insomnia in 11q14.1 (rs667730, **Fig.**
14 **S17**) and chronotype in 18q21.2 (rs10502966, **Fig. S18**). These genes are highly pleiotropic
15 for brain disorders, where *DCC* has shown associations with depression and schizophrenia
16 in animal studies^{111,112}, and *DLG2* encodes an evolutionarily conserved scaffolding protein
17 and has been associated with schizophrenia, Parkinson's disease, and cognitive
18 impairment¹¹³. Other sleep traits also show shared genetic influences with regional brain
19 volumes, such as in the locus 14q32.2 for snoring and volume of the left thalamus proper
20 (**Fig. 4B**).

21

22 Five loci contributed to both sleep and resting/task fMRI traits. We found shared genetic
23 influences between resting functional connectivity and sleep duration in the locus 2q14.1
24 (**Fig. 4C**). In addition, the locus 19q13.32 was associated with both insomnia and
25 resting/task fMRI (**Figs. 4D** and **S19**). This locus harbors the *APOE* gene, a well-established
26 genetic factor for Alzheimer's disease. We also found that this locus had shared genetic
27 influences for insomnia and the average proton density fat fraction in the liver (**Fig. S20**).
28 Previous research has indicated an elevated risk of Alzheimer's disease among individuals
29 with NAFLD^{114,115} and sleep traits have also been consistently linked to Alzheimer's
30 disease and other dementias². In addition, 11q13.2 contributed to both chronotype and
31 fat fraction in the viable muscle tissue in the posterior thigh (**Fig. 5A**). Furthermore, we
32 found five genetic loci that were associated with sleep and cardiac MRI traits, most of

1 which were with chronotype. These loci encompass crucial genes associated with
2 circadian rhythm regulation. For example, in 11p11.2, shared genetic influence was
3 observed between the myocardial-wall thickness at end-diastole and both insomnia and
4 chronotype (**Figs. 5B** and **S21**). This locus contains *CRY2*, a cryptochrome gene that is a
5 critical component of the molecular clock and serves as a circadian photoreceptor¹¹⁶.
6 Another locus, 22q13.1, contains the crucial circadian regulator *CSNK1E*¹¹⁷ and was
7 associated with chronotype and the maximum area of the ascending aorta (**Fig. S22**).

8

9 We identified 17 loci that contributed to both sleep and retinal OCT traits, most of which
10 were related to chronotype. The locus 14q24.3 was a key contributor to chronotype and
11 a substantial portion (27 out of 46) of the OCT traits (**Fig. S23**). This locus contains the
12 *VSX2* gene, which is critical to retina development¹¹⁸. In addition, in 12p13.33, we found
13 shared genetic influences between chronotype and the average thickness between ISOS
14 and RPE in the left eye (**Fig. 5C**). *CACNA2D4* gene in this region is related to retinal cone
15 dystrophy¹¹⁹. In addition, the genetic locus 3p24.2, which includes a circadian clock gene
16 *NR1D2*¹²⁰, exhibited shared genetic influences with insomnia and disc diameter (**Fig. S24**).
17 Moreover, in 1p13.2, rs6537747 influences both chronotype and average thickness
18 between ISOS to the RPE (**Fig. S25**). This genetic variant was a brain eQTL of *CAPZA1*,
19 which was associated with various eye-related phenotypes. It has been reported that
20 knockout mice lacking *CAPZA1* display multiple eye diseases, such as cataract and
21 abnormal retinal blood vessel morphology¹²¹. Genetic overlaps with snoring were also
22 observed, such as with the average INL thickness in 6q14.2 (**Fig. 5D**).

23

24 **Sleep-disease genetic correlation patterns across multiple organs**

25 Given the substantial sleep-imaging genetic links between sleep and organ structures and
26 functions, we aimed to elucidate the genetic connections between sleep and relevant
27 diseases of these organs from a multi-organ perspective. We systematically collected 113
28 GWAS datasets of 50 distinct diseases/traits spanning these organs, including 7
29 psychiatric/neurological disorders, 13 cardiovascular diseases/traits, 2 diabetes, 2 eye
30 diseases, 10 kidney diseases/traits, 4 liver diseases/traits, and 12 lung functions/diseases
31 (**Table S7**). At a 5% FDR level (P range = $(8.85 \times 10^{-117}, 1.55 \times 10^{-2})$), an atlas of sleep-disease

1 genetic correlations was then established by performing LD score regression⁹³ with the
2 34 sleep GWAS summary statistics (**Table S8**).

3

4 Across all these organs, brain-related diseases had the strongest genetic correlations with
5 multiple sleep traits (**Figs. 6A-6B** and **S26**). Specifically, neuroticism and depression had
6 the highest genetic correlations with insomnia (β range = (0.38, 0.47), $P < 1.13 \times 10^{-27}$ for
7 neuroticism and β range = (0.33, 0.60), $P < 1.16 \times 10^{-6}$ for depression, **Fig. S27**). Insomnia
8 is frequently observed in individuals with depression¹²², and their sleep patterns exhibit
9 a decrease in slow-wave sleep and an increase in both rapid eye movement (REM) density
10 and total REM sleep time¹²³. The close association between neuroticism and insomnia
11 was also consistent with previous studies, with neuroticism being identified as one of the
12 key factors contributing to inadequate sleep^{124,125}. In addition to insomnia, we found that
13 other sleep traits also had broad genetic correlations with mental disorders. For example,
14 schizophrenia, bipolar disorder, depression, and neuroticism were genetically correlated
15 with difficulty in getting up in the morning and narcolepsy (β range = (-0.35, 0.60), $P <$
16 1.07×10^{-5}). Narcolepsy has been shown to exhibit a high comorbidity with psychiatric
17 disorders¹²⁶. In addition, being an evening person exhibited genetic correlation with an
18 elevated risk of schizophrenia (β range = (-0.15, -0.09), $P < 7.27 \times 10^{-6}$), which was
19 consistent with previous findings that evening chronotype is a risk factor for multiple
20 mental health problems, including schizophrenia¹²⁷. Moreover, schizophrenia
21 consistently exhibited genetic correlations with most sleep traits we considered, except
22 insomnia (β range = (-0.20, 0.16), $P < 7.27 \times 10^{-6}$). Significant genetic correlations were also
23 observed with Alzheimer's disease and Parkinson's disease, both of which exhibited
24 genetic correlations with shorter sleep durations (β range = (-0.20, 0.13), $P < 8.20 \times 10^{-3}$),
25 matching findings from previous studies² (**Figs. 6A** and **S27**).

26

27 Sleep and cardiovascular diseases have close connections^{128,129}. We found that the
28 majority of genetic correlations with cardiovascular diseases and traits were
29 predominantly related to snoring, narcolepsy, insomnia, and sleep duration. Specifically,
30 multiple heart diseases, such as heart failure, myocardial infarction, coronary artery
31 disease, and hypertension, showed widespread genetic correlations with snoring,
32 insomnia, and shorter or longer sleep duration (β range = (0.13, 0.40), $P < 1.01 \times 10^{-5}$).

1 These sleep traits also had genetic correlations with systolic/diastolic blood pressure and
2 resting heart rate (β range = (0.05, 0.17), $P < 1.41 \times 10^{-2}$). Other sleep traits also had genetic
3 correlations with a few specific heart conditions. For example, narcolepsy and a more
4 frequent daytime nap were genetically correlated with heart failure, coronary artery
5 disease, and hypertension (β range = (0.11, 0.18), $P < 7.46 \times 10^{-6}$).

6

7 Diseases related to the kidney, liver, and lung tended to have similar patterns in their
8 genetic correlations with sleep (**Fig. S27**). For example, snoring, insomnia, and shorter or
9 longer sleep duration were genetically correlated with increased risk of chronic renal
10 failure, NAFLD, asthma, COPD, and pneumonia (β range = (0.11, 0.53), $P < 1.12 \times 10^{-5}$), as
11 well as type 1 and type 2 diabetes (β range = (0.16, 0.34), $P < 8.64 \times 10^{-6}$). Consistent
12 genetic correlations between sleep and the relevant biomarkers of these diseases were
13 observed. For example, urinary biomarkers such as urinary potassium to creatinine ratio,
14 urinary sodium to potassium ratio, and urinary sodium excretion, along with liver
15 biomarkers such as liver enzyme levels, displayed genetic correlations with snoring,
16 insomnia, and shorter or longer sleep duration as well (β range = (-0.38, 0.27), $P <$
17 1.19×10^{-5}). Furthermore, higher forced expiratory volume (FVC) was genetically
18 correlated with a reduced risk of snoring (β range = (-0.13, -0.10), $P < 2.74 \times 10^{-6}$).
19 Significant genetic correlations were also observed with eye diseases. Cataract was
20 genetically correlated with shorter sleep duration (β range = (0.12, 0.16), $P < 1 \times 10^{-2}$) and
21 increased risk of insomnia (β range = (0.10, 0.20), $P < 1.43 \times 10^{-2}$). Cataracts limit the
22 transmission of light to the area of the eye responsible for regulating the biological clock,
23 which might cause insomnia. Cataract patients with sleep problems showed improved
24 sleep quality following cataract surgery^{130,131}.

25

26 Beyond the above organ-specific patterns, we identified distinct genetic correlation
27 patterns across various organs for different sleep traits (**Fig. S27**). For example, the
28 majority of genetic correlations with chronotype and ease of waking up were associated
29 with brain disorders, rather than diseases of other organs. This was different from other
30 sleep traits, which typically had a more balanced pattern of associations across various
31 organs. In addition, after adjusting for BMI, the correlations between snoring and
32 narcolepsy with many heart, kidney, liver, and lung diseases diminished, but their genetic

1 links with mental disorders, such as schizophrenia, remained. This suggests that BMI may
2 play a distinct role in the genetic correlations between snoring/narcolepsy and these non-
3 brain organs compared to its role in sleep's correlations with psychiatric disorders.
4 Furthermore, evidence of nonlinear genetic relationships between sleep duration and
5 various diseases was observed across all organs. This was deduced from results showing
6 both excessively short and long sleep durations, as well as insomnia, having consistently
7 similar positive genetic correlations with various diseases, while regular sleep duration
8 traits typically showed negative correlations. These observations suggest that both short
9 and long sleep durations may adversely affect overall brain and body health.

10
11 Using 23 sets of publicly available disease GWAS summary statistics from the East Asian
12 population (**Table S9**), we further explored their cross-ancestry sleep-disease genetic
13 correlations with sleep using Popcorn¹³² (**Methods**). Compared to genetic correlations
14 within the European ancestry, the direction of cross-ancestry genetic correlations
15 remained largely consistent for several diseases, though the magnitude of estimates was
16 lower (**Figs. S28-S32** and **Table S10**). For example, of the 25 pairs demonstrating
17 significant genetic correlations between sleep and type 2 diabetes within the European
18 population, 24 maintained consistent directions in the cross-population analysis between
19 East Asians and Europeans (**Fig. S28**). Furthermore, the gap in the two sets of correlation
20 estimates might be partly attributed to the different genetic architectures of the same
21 disease across the two populations. For example, the average reduction in genetic
22 correlations between European sleep traits and East Asian type 1 diabetes, compared to
23 the within-European correlations, was 0.38 (**Fig. S29**). Meanwhile, the genetic correlation
24 between European and East Asian type 1 diabetes was 0.56, indicating that a large portion
25 of the genetic correlation reduction may come from the genetic differences in type 1
26 diabetes between the two populations. These observations may imply that the sleep-
27 disease genetic correlation patterns also exist in other populations, with similar directions
28 and comparable magnitudes of correlation.

29
30 Furthermore, genetic causal links between sleep and diseases/traits were explored using
31 two-sample Mendelian randomization (MR) with 44 sets of disease GWAS summary
32 statistics, ensuring no overlap with subjects from the sleep GWAS (**Table S11** and

1 **Methods**). At a 5% FDR level ($P < 2.93 \times 10^{-3}$), we found evidence of causal links between
2 sleep and diseases in both directions, predominantly involving psychiatric disorders (**Fig.**
3 **6C** and **Table S12**). Among all studied diseases, the strongest causal effects were observed
4 from multiple psychiatric disorders on sleep traits. Specifically, we found consistent
5 evidence that depression caused an increased risk of insomnia ($P < 7.12 \times 10^{-6}$, **Fig. S33**).
6 We also found causal links between schizophrenia and sleep, where schizophrenia was
7 causally associated with longer sleep duration ($P < 9.66 \times 10^{-8}$) and difficulty in getting up
8 in the morning ($P < 1.84 \times 10^{-6}$, **Fig. S34**). Similar to schizophrenia, bipolar also caused
9 longer sleep duration ($P < 1.11 \times 10^{-3}$, **Fig. S35**) and difficulty in getting up in the morning
10 ($P < 8.94 \times 10^{-4}$, **Fig. S36**). These findings were generally consistent among multiple sleep
11 GWAS summary statistics data resources. Among brain disorders, we also found that
12 Alzheimer's disease decreased the genetic liability of daytime napping ($P < 1.32 \times 10^{-3}$, **Fig.**
13 **S37**). Moreover, two non-brain disorders, NAFLD and hypertension, had causal effects on
14 sleep. For example, we found that NAFLD increased the risk of insomnia ($P < 5.83 \times 10^{-11}$,
15 **Fig. S38**) and there was a causal effect from hypertension to snoring ($P < 1.76 \times 10^{-3}$, **Fig.**
16 **S39**). These results provide further insights into the genetic connections between sleep
17 and both brain and body health, highlighting the notably intricate causal links between
18 sleep and psychiatric disorders, as evidenced by the currently available data.

19

20 **Diseases genetically involved in sleep-imaging connections**

21 After mapping both the multi-organ sleep-imaging and sleep-disease genetic correlations,
22 we would like to explore whether diseases mediate the sleep and imaging connections,
23 potentially offering new insights into the complex interrelations among sleep, imaging,
24 and health conditions. We first identified 623 combinations of sleep, imaging, and disease
25 triples that had pairwise marginal genetic correlations, and then we analyzed the
26 mediation effects using genomic structural equation modeling¹³³ (**Methods**). We found
27 145 sleep-imaging pairs whose associations were mediated by the presence of disease at
28 a 5% FDR level, most (133/145) of which exhibited consistent directions in marginal and
29 conditional genetic correlations (**Figs. 6D** and **S40, Table 13**). Below we highlight several
30 patterns we found, particularly for brain and abdominal imaging traits.

31

1 There were 12 pairs of genetic correlations between brain MRI traits and sleep traits
2 mediated by psychiatric disorders, specifically schizophrenia and neuroticism (**Fig. S41**).
3 Schizophrenia was frequently involved in the genetic correlations between sleep and
4 resting fMRI traits. For example, schizophrenia mediated the association between
5 functional connectivity between language and auditory networks and sleep duration
6 (mediation proportion range = [37.01%, 43.79%]), as well as the association between
7 functional connectivity between cingulo-opercular and default mode networks and
8 narcolepsy (mediation proportion range = [44.00%, 50.75%]). In addition, neuroticism
9 played a role in mediating the association between functional connectivity in the
10 posterior-multimodal network and narcolepsy (mediation proportion = 54.38%), as well
11 as the association between total brain volume and insomnia (mediation proportion range
12 = [42.37%, 73.22%]).

13
14 The genetic correlations between abdominal MRI traits and sleep were mediated by
15 various diseases, which constituted a large majority of the observed pairs (94 out of 133,
16 **Fig. S42**). Particularly, links between abdominal MRI and insomnia, daytime napping, and
17 snoring were consistently mediated by a common set of diseases spanning multiple
18 organs, including depression, neuroticism, coronary artery disease, NAFLD, and type 2
19 diabetes. These diseases were widely involved in genetic correlations between daytime
20 napping and liver fat percentage, total abdominal adipose tissue index, total trunk fat
21 volume, and VAT (mediation proportion range = [34.92%, 76.84%]). The same set of
22 diseases also mediated the associations between insomnia and weight-to-muscle,
23 abdominal fat ratio, total and posterior thigh fat free muscle volumes, and VAT (mediation
24 proportion range = [32.34%, 97.86%]). Notably, the association between weight-to-
25 muscle ratio and insomnia was substantially mediated by depression, resulting in the
26 highest reduction in genetic correlation observed with and without considering the
27 mediation effect (mediation proportion = 97.86%). Additionally, these diseases mediated
28 the associations between snoring and total abdominal adipose tissue index, total trunk
29 fat volume, abdominal fat ratio, pancreas fat ratio, subcutaneous fat volume, and VAT
30 (mediation proportion reduction range = [33.13%, 89.33%]). These results provide
31 additional insights into the genetic connections between sleep and imaging traits, which
32 potentially reflect the involved genetic risk factors for related diseases.

1

2 **DISCUSSION**

3 Sleep is vital to both physical health and mental well-being. Understanding how sleep
4 interacts with human health is of great interest. This study aimed to map phenotypic and
5 genetic connections between sleep and whole-body health by using multi-organ imaging
6 data as endophenotypes. Our large-scale datasets and analyses uncovered substantial
7 links between sleep and the structure and function of various organs, revealing organ-
8 specific patterns for different sleep traits. We examined the genetic basis of sleep-imaging
9 connections from different perspectives, investigating both the shared genetic loci and
10 the overall genetic similarity across the genome. Some genetic loci also contributed to
11 both sleep and diseases related to these studied organs. Significant genetic correlations
12 were identified between sleep and a wide spectrum of diseases, especially neurological
13 and psychiatric disorders, cardiovascular diseases, and chronic kidney and liver diseases.
14 Consistent with previous findings^{45,134}, we found causal links with multiple psychiatric
15 disorders, such as depression, schizophrenia, and bipolar disorders. Future
16 epidemiological and clinical studies of sleep and comorbid conditions may benefit from
17 our results and insights.

18

19 In this study, we identified many novel genetic loci that were associated with both sleep
20 and imaging traits. Several genetic loci exhibited pleiotropy between sleep and imaging
21 traits across various organs, including 17q21.31, 4q24, and 5q14.3. Additionally,
22 numerous other loci appeared to be specific to particular organs (**Fig. 3B**). We found that
23 chronotype and insomnia played a predominant role in these genetic effects shared
24 between sleep and organ structures and functions, which may be related to the extensive
25 involvement of the loci in the regulation of circadian rhythms¹³⁵. Genes associated with
26 circadian rhythms were intricately linked to the underlying mechanisms that govern
27 fundamental biological processes for human health, spanning multiple organs⁵⁰. The
28 shared genetic influences with sleep extended across a wide variety of imaging modalities,
29 with the highest number of loci being associated with brain white matter, brain grey
30 matter, and eye-related traits. Notably, the genetic loci associated with these imaging
31 modalities often vary, underscoring the value of a multi-organ, multi-modality approach
32 to mapping sleep's connections to human health. Interestingly, we did not find shared

1 genetic loci between narcolepsy and any of the imaging data categories. Narcolepsy,
2 being an autoimmune disease, is strongly influenced by both environmental and genetic
3 factors¹³⁶. The limited presence of narcolepsy in the genetic pleiotropy with imaging traits
4 could be attributed, in part, to the relatively low statistical power of current narcolepsy
5 GWAS. This is partially supported by the robust genome-wide genetic correlation findings
6 between narcolepsy and resting MRI traits, which did not require the identification of
7 specific GWAS significant loci (**Fig. 2B**).

8

9 Psychiatric disorders exhibited robust genetic connections with sleep in different
10 approaches. We found that several genetic loci affecting both sleep and imaging traits
11 were also linked to psychiatric disorders, such as 9q22.31 and 18q21.2 that were
12 associated with depression (**Figs. S12 and S18**). Genetic correlations were also found
13 between sleep and various psychiatric disorders. Different from many diseases related to
14 non-brain organs, most genetic correlations between psychiatric disorders and sleep still
15 existed after adjusting for BMI. Additionally, MR revealed causal genetic effects from
16 psychiatric disorders, like depression and schizophrenia, on sleep patterns. Some of the
17 causal effect estimates survived several sensitivity analyses and yielded similar effect sizes,
18 supporting the robustness of the causal links between mental disorders and sleep. These
19 collective findings suggest that psychiatric disorders distinctly stand out and have a
20 notably close relationship with sleep, when viewed from a whole-body perspective across
21 various diseases.

22

23 We identified many pairs of imaging and sleep traits whose genetic correlations were
24 mediated by diseases (**Fig. 6D**). For example, psychiatric disorders such as schizophrenia
25 and neuroticism mediated the genetic link between resting fMRI and narcolepsy, as well
26 as between total brain volume and insomnia. Additionally, diseases affecting multiple
27 body systems played a role in the genetic connections between abdominal MRI and sleep
28 traits, including depression, neuroticism, coronary artery disease, NAFLD, and type 2
29 diabetes. It is worth mentioning that our genetic mediation analysis alone did not imply
30 causal directions but rather suggested the diseases involved in the identified sleep-
31 imaging genetic correlations. It has been reported that brain structures tend to affect
32 narcolepsy, as the loss of neurons producing hypocretin, controlled by specific genes, is

1 the main cause of narcolepsy¹³⁷. Conversely, insomnia could be either a cause or a
2 consequence of brain structural changes¹³⁸. The relationship between body fat/muscle
3 composition and visceral fat with sleep may also be bidirectional. Circadian misalignment
4 and daytime napping elevate cortisol levels, potentially leading to fat accumulation in the
5 abdominal area^{139,140}. Abdominal fat affects airway size and function, which may cause
6 OSA, and OSA contributes to obesity due to lack of sleep, daytime drowsiness, and
7 metabolic disturbances¹⁴¹. Regardless of causal directions, the identified mediated effects
8 aid in understanding the genetic risks of diseases underlying sleep-imaging connections.

9

10 The present study has several limitations. First, our sleep-imaging and sleep-disease
11 analyses were mainly based on European subjects. We conducted a cross-ancestry
12 genetic correlation analysis using East Asian disease GWAS summary statistics, which
13 indicated a level of similarity in sleep-disease connections between these two populations.
14 In future studies, data from a broader range of sources could be incorporated into the
15 imaging genetics study of sleep, and findings identified by European cohorts may be
16 generalized to global populations. The current study focused on the brain, heart, eye, and
17 abdominal organs. Among them, detailed imaging measurements were extensively
18 conducted for the brain and heart. However, the imaging analysis of the liver, kidney, lung,
19 spleen, and pancreas was less comprehensive. Improving abdominal MRI pipelines and
20 incorporating data from additional organs could provide further insights into sleep
21 research. In addition, due to the nature of the data resources, the sleep traits and imaging
22 data used in this study were not collected at the same time point. Finally, we focused
23 primarily on linear relationships in our models. Some of our results and several recent
24 studies have demonstrated that certain sleep traits may also have nonlinear phenotypic
25 and genetic links (such as sleep duration^{31,37}). In the future, advanced statistical and
26 machine learning methods in imaging genetics may be used to identify more
27 comprehensive relationships.

28

29 **METHODS**

30 Methods are available in the *Methods* section.

31 *Note: One supplementary information pdf file and one supplementary table zip file are*
32 *available.*

1

2 **ACKNOWLEDGEMENTS**

3 We thank the individuals represented in the UK Biobank study for their participation and
4 the research teams for their work in collecting, processing, and disseminating these
5 datasets for analysis. We would like to thank the research computing groups at the
6 University of North Carolina at Chapel Hill, Purdue University, and the Wharton School of
7 the University of Pennsylvania for providing computational resources and support that
8 have contributed to these research results. We gratefully acknowledge all the studies and
9 databases that made GWAS and eQTL summary-level data publicly available. This
10 research has been conducted using the UK Biobank resource (application number 76139),
11 subject to a data transfer agreement. Research reported in this publication was supported
12 by the National Institute On Aging of the National Institutes of Health under Award
13 Number RF1AG082938. The content is solely the responsibility of the authors and does
14 not necessarily represent the official views of the National Institutes of Health. The study
15 has also been partially supported by funding from the Purdue University Statistics
16 Department and the Department of Statistics and Data Science at the University of
17 Pennsylvania. Assistance for this project was also provided by the UNC Intellectual and
18 Developmental Disabilities Research Center (NICHD; P50 HD103573).

19

20 **AUTHOR CONTRIBUTIONS**

21 B.Z. designed the study. Z.F., Y.Y., Y.G., Y.L., J.S., X.Y., B.L., J.L., and T.L. analyzed the data.
22 Q.W., C.G., P.P., T.L., P.G., and H.Z. provide comments and interpret the results. Z.F. and
23 B.Z. wrote the manuscript with feedback from all authors.

24

25 **COMPETING FINANCIAL INTERESTS**

26 The authors declare no competing financial interests.

27

28 **REFERENCES**

- 29 1. Tao, F. *et al.* Associations of sleep duration and quality with incident
30 cardiovascular disease, cancer, and mortality: a prospective cohort study of
31 407,500 UK biobank participants. *Sleep Medicine* **81**, 401-409 (2021).

- 1 2. Sabia, S. *et al.* Association of sleep duration in middle and old age with incidence
2 of dementia. *Nature Communications* **12**, 1-10 (2021).
- 3 3. Freeman, D., Sheaves, B., Waite, F., Harvey, A.G. & Harrison, P.J. Sleep
4 disturbance and psychiatric disorders. *The Lancet Psychiatry* **7**, 628-637 (2020).
- 5 4. Alvaro, P.K., Roberts, R.M. & Harris, J.K. A systematic review assessing
6 bidirectionality between sleep disturbances, anxiety, and depression. *Sleep* **36**,
7 1059-1068 (2013).
- 8 5. Kaskie, R.E., Graziano, B. & Ferrarelli, F. Schizophrenia and sleep disorders: links,
9 risks, and management challenges. *Nature and science of sleep* **9**, 227 (2017).
- 10 6. Jike, M., Itani, O., Watanabe, N., Buysse, D.J. & Kaneita, Y. Long sleep duration
11 and health outcomes: a systematic review, meta-analysis and meta-regression.
12 *Sleep medicine reviews* **39**, 25-36 (2018).
- 13 7. Morovatdar, N. *et al.* Sleep duration and risk of atrial fibrillation: a systematic
14 review. *Journal of atrial Fibrillation* **11**(2019).
- 15 8. Titova, O.E., Michaëlsson, K. & Larsson, S.C. Sleep duration and stroke:
16 prospective cohort study and mendelian randomization analysis. *Stroke* **51**,
17 3279-3285 (2020).
- 18 9. Chasens, E.R. *et al.* Sleep and Metabolic Syndrome. *Nurs Clin North Am* **56**, 203-
19 217 (2021).
- 20 10. Koren, D., Dumin, M. & Gozal, D. Role of sleep quality in the metabolic
21 syndrome. *Diabetes Metab Syndr Obes* **9**, 281-310 (2016).
- 22 11. Smiley, A., King, D. & Bidulescu, A. The Association between Sleep Duration and
23 Metabolic Syndrome: The NHANES 2013/2014. *Nutrients* **11**(2019).
- 24 12. Ahmed, M.H. & Byrne, C.D. Obstructive sleep apnea syndrome and fatty liver:
25 association or causal link? *World J Gastroenterol* **16**, 4243-52 (2010).
- 26 13. Mesarwi, O.A., Loomba, R. & Malhotra, A. Obstructive Sleep Apnea, Hypoxia, and
27 Nonalcoholic Fatty Liver Disease. *Am J Respir Crit Care Med* **199**, 830-841 (2019).
- 28 14. Ognja, A. *et al.* Sleep Characteristics in Early Stages of Chronic Kidney Disease in
29 the HypnoLaus Cohort. *Sleep* **39**, 945-53 (2016).
- 30 15. Maung, S.C., El Sara, A., Chapman, C., Cohen, D. & Cukor, D. Sleep disorders and
31 chronic kidney disease. *World J Nephrol* **5**, 224-32 (2016).

- 1 16. Budhiraja, R., Roth, T., Hudgel, D.W., Budhiraja, P. & Drake, C.L. Prevalence and
2 polysomnographic correlates of insomnia comorbid with medical disorders.
3 *Sleep* **34**, 859-67 (2011).
- 4 17. Budhiraja, R., Siddiqi, T.A. & Quan, S.F. Sleep disorders in chronic obstructive
5 pulmonary disease: etiology, impact, and management. *J Clin Sleep Med* **11**, 259-
6 70 (2015).
- 7 18. Petersen, S.E. *et al.* UK Biobank's cardiovascular magnetic resonance protocol. *J*
8 *Cardiovasc Magn Reson* **18**, 8 (2016).
- 9 19. Littlejohns, T.J., Sudlow, C., Allen, N.E. & Collins, R. UK Biobank: opportunities for
10 cardiovascular research. *Eur Heart J* **40**, 1158-1166 (2019).
- 11 20. Miller, K.L. *et al.* Multimodal population brain imaging in the UK Biobank
12 prospective epidemiological study. *Nat Neurosci* **19**, 1523-1536 (2016).
- 13 21. Thompson, P.M. *et al.* ENIGMA and global neuroscience: A decade of large-scale
14 studies of the brain in health and disease across more than 40 countries. *Transl*
15 *Psychiatry* **10**, 100 (2020).
- 16 22. Wilman, H.R. *et al.* Characterisation of liver fat in the UK Biobank cohort. *PLoS*
17 *One* **12**, e0172921 (2017).
- 18 23. Liu, Y. *et al.* Genetic architecture of 11 organ traits derived from abdominal MRI
19 using deep learning. *Elife* **10**(2021).
- 20 24. Langner, T. *et al.* Kidney segmentation in neck-to-knee body MRI of 40,000 UK
21 Biobank participants. *Sci Rep* **10**, 20963 (2020).
- 22 25. Bouma, B.E. *et al.* Optical coherence tomography. *Nat Rev Methods Primers*
23 **2**(2022).
- 24 26. Fjell, A.M. *et al.* Self-reported sleep relates to hippocampal atrophy across the
25 adult lifespan: results from the Lifebrain consortium. *Sleep* **43**, zsz280 (2020).
- 26 27. Sexton, C.E., Storsve, A.B., Walhovd, K.B., Johansen-Berg, H. & Fjell, A.M. Poor
27 sleep quality is associated with increased cortical atrophy in community-dwelling
28 adults. *Neurology* **83**, 967-73 (2014).
- 29 28. Zitser, J. *et al.* Sleep duration over 28 years, cognition, gray matter volume, and
30 white matter microstructure: a prospective cohort study. *Sleep* **43**(2020).

- 1 29. Amorim, L. *et al.* Poor Sleep Quality Associates With Decreased Functional and
2 Structural Brain Connectivity in Normative Aging: A MRI Multimodal Approach.
3 *Front Aging Neurosci* **10**, 375 (2018).
- 4 30. Li, G. *et al.* Magnetic resonance study on the brain structure and resting-state
5 brain functional connectivity in primary insomnia patients. *Medicine (Baltimore)*
6 **97**, e11944 (2018).
- 7 31. Li, Y. *et al.* The brain structure and genetic mechanisms underlying the nonlinear
8 association between sleep duration, cognition and mental health. *Nature Aging*
9 **2**, 425-437 (2022).
- 10 32. de Oliveira, F.G., Pinto, I., Valdigem, B., Senra, T. & Bertolami, A. Evaluation of
11 late atrial enhancement by cardiac magnetic resonance imaging in patients with
12 obstructive sleep apnea. *Sleep Med* **74**, 204-210 (2020).
- 13 33. Curta, A. *et al.* Subclinical Changes in Cardiac Functional Parameters as
14 Determined by Cardiovascular Magnetic Resonance (CMR) Imaging in Sleep
15 Apnea and Snoring: Findings from UK Biobank. *Medicina (Kaunas)* **57**(2021).
- 16 34. Ozge, G. *et al.* Retina nerve fiber layer and choroidal thickness changes in
17 obstructive sleep apnea syndrome. *Postgrad Med* **128**, 317-22 (2016).
- 18 35. Bayhan, H.A., Aslan Bayhan, S., Intepe, Y.S., Muhafiz, E. & Gurdal, C. Evaluation
19 of the macular choroidal thickness using spectral optical coherence tomography
20 in patients with obstructive sleep apnoea syndrome. *Clin Exp Ophthalmol* **43**,
21 139-44 (2015).
- 22 36. Xin, C., Wang, J., Zhang, W., Wang, L. & Peng, X. Retinal and choroidal thickness
23 evaluation by SD-OCT in adults with obstructive sleep apnea-hypopnea
24 syndrome (OSAS). *Eye (Lond)* **28**, 415-21 (2014).
- 25 37. Tai, X.Y., Chen, C., Manohar, S. & Husain, M. Impact of sleep duration on
26 executive function and brain structure. *Communications biology* **5**, 1-10 (2022).
- 27 38. Fjell, A.M. *et al.* Sleep duration and brain structure – phenotypic associations and
28 genotypic covariance. *bioRxiv*, 2022.02.15.480501 (2022).
- 29 39. Smith, S.M. & Nichols, T.E. Statistical challenges in “big data” human
30 neuroimaging. *Neuron* **97**, 263-268 (2018).
- 31 40. Miller, K.L. *et al.* Multimodal population brain imaging in the UK Biobank
32 prospective epidemiological study. *Nature Neuroscience* **19**, 1523-1536 (2016).

- 1 41. Krohn, L. *et al.* Genome-wide association study of REM sleep behavior disorder
2 identifies novel loci with distinct polygenic and brain expression effects. *medRxiv*
3 (2021).
- 4 42. Dashti, H.S. *et al.* Genetic determinants of daytime napping and effects on
5 cardiometabolic health. *Nature communications* **12**, 1-15 (2021).
- 6 43. Dashti, H.S. *et al.* Genome-wide association study identifies genetic loci for self-
7 reported habitual sleep duration supported by accelerometer-derived estimates.
8 *Nature communications* **10**, 1-12 (2019).
- 9 44. Doherty, A. *et al.* GWAS identifies 14 loci for device-measured physical activity
10 and sleep duration. *Nature communications* **9**, 1-8 (2018).
- 11 45. Jansen, P.R. *et al.* Genome-wide analysis of insomnia in 1,331,010 individuals
12 identifies new risk loci and functional pathways. *Nature Genetics* **51**, 394-403
13 (2019).
- 14 46. Jones, S.E. *et al.* Genetic studies of accelerometer-based sleep measures yield
15 new insights into human sleep behaviour. *Nature communications* **10**, 1-12
16 (2019).
- 17 47. Lane, J.M. *et al.* Genome-wide association analyses of sleep disturbance traits
18 identify new loci and highlight shared genetics with neuropsychiatric and
19 metabolic traits. *Nature genetics* **49**, 274-281 (2017).
- 20 48. Lane, J.M. *et al.* Biological and clinical insights from genetics of insomnia
21 symptoms. *Nature genetics* **51**, 387-393 (2019).
- 22 49. Wang, H. *et al.* Genome-wide association analysis of self-reported daytime
23 sleepiness identifies 42 loci that suggest biological subtypes. *Nature*
24 *communications* **10**, 1-12 (2019).
- 25 50. Lane, J.M. *et al.* Genetics of circadian rhythms and sleep in human health and
26 disease. *Nature Reviews Genetics*, 1-17 (2022).
- 27 51. Doherty, A. *et al.* GWAS identifies 14 loci for device-measured physical activity
28 and sleep duration. *Nat Commun* **9**, 5257 (2018).
- 29 52. Jones, S.E. *et al.* Genome-wide association analyses of chronotype in 697,828
30 individuals provides insights into circadian rhythms. *Nat Commun* **10**, 343 (2019).

- 1 53. Jones, S.E. *et al.* Genome-Wide Association Analyses in 128,266 Individuals
2 Identifies New Morningness and Sleep Duration Loci. *PLoS Genet* **12**, e1006125
3 (2016).
- 4 54. Hammerschlag, A.R. *et al.* Genome-wide association analysis of insomnia
5 complaints identifies risk genes and genetic overlap with psychiatric and
6 metabolic traits. *Nat Genet* **49**, 1584-1592 (2017).
- 7 55. Watanabe, K. *et al.* Genome-wide meta-analysis of insomnia prioritizes genes
8 associated with metabolic and psychiatric pathways. *Nat Genet* **54**, 1125-1132
9 (2022).
- 10 56. Campos, A.I. *et al.* Insights into the aetiology of snoring from observational and
11 genetic investigations in the UK Biobank. *Nat Commun* **11**, 817 (2020).
- 12 57. Hernandez, L.M. *et al.* Decoupling sleep and brain size in childhood: An
13 investigation of genetic covariation in the Adolescent Brain Cognitive
14 Development Study. *Biological psychiatry global open science* **3**, 139-148 (2023).
- 15 58. Aung, N. *et al.* Genome-wide analysis of left ventricular image-derived
16 phenotypes identifies fourteen loci associated with cardiac morphogenesis and
17 heart failure development. *Circulation* **140**, 1318-1330 (2019).
- 18 59. Córdova-Palomera, A. *et al.* Cardiac Imaging of Aortic Valve Area From 34 287 UK
19 Biobank Participants Reveals Novel Genetic Associations and Shared Genetic
20 Comorbidity With Multiple Disease Phenotypes. *Circulation: Genomic and*
21 *Precision Medicine* **13**, e003014 (2020).
- 22 60. Meyer, H.V. *et al.* Genetic and functional insights into the fractal structure of the
23 heart. *Nature* **584**, 589-594 (2020).
- 24 61. Pirruccello, J.P. *et al.* Analysis of cardiac magnetic resonance imaging in 36,000
25 individuals yields genetic insights into dilated cardiomyopathy. *Nature*
26 *communications* **11**, 1-10 (2020).
- 27 62. Pirruccello, J.P. *et al.* Genetic analysis of right heart structure and function in
28 40,000 people. *Nature genetics* **54**, 792-803 (2022).
- 29 63. Thanaj, M. *et al.* Genetic and environmental determinants of diastolic heart
30 function. *Nature cardiovascular research* **1**, 361-371 (2022).
- 31 64. Elliott, L.T. *et al.* Genome-wide association studies of brain imaging phenotypes
32 in UK Biobank. *Nature* **562**, 210-216 (2018).

- 1 65. Zhao, B. *et al.* Genome-wide association analysis of 19,629 individuals identifies
2 variants influencing regional brain volumes and refines their genetic co-
3 architecture with cognitive and mental health traits. *Nature genetics* **51**, 1637-
4 1644 (2019).
- 5 66. Smith, S.M. *et al.* An expanded set of genome-wide association studies of brain
6 imaging phenotypes in UK Biobank. *Nature neuroscience* **24**, 737-745 (2021).
- 7 67. Zhao, B. *et al.* Common genetic variation influencing human white matter
8 microstructure. *Science* **372**, eabf3736 (2021).
- 9 68. Grasby, K.L. *et al.* The genetic architecture of the human cerebral cortex. *Science*
10 **367**, eaay6690 (2020).
- 11 69. Zhao, B. *et al.* Genetic influences on the intrinsic and extrinsic functional
12 organizations of the cerebral cortex. *medRxiv*, 2021.07. 27.21261187 (2021).
- 13 70. Zhao, B. *et al.* Eye-brain connections revealed by multimodal retinal and brain
14 imaging genetics in the UK Biobank. *medRxiv*, 2023.02. 16.23286035 (2023).
- 15 71. Sudlow, C. *et al.* UK biobank: an open access resource for identifying the causes
16 of a wide range of complex diseases of middle and old age. *PLoS medicine* **12**,
17 e1001779 (2015).
- 18 72. Zhao, B. *et al.* Heart-brain connections: Phenotypic and genetic insights from
19 magnetic resonance images. *Science* **380**, abn6598 (2023).
- 20 73. Sorokin, E.P. *et al.* Analysis of MRI-derived spleen iron in the UK Biobank
21 identifies genetic variation linked to iron homeostasis and hemolysis. *Am J Hum*
22 *Genet* **109**, 1092-1104 (2022).
- 23 74. Mojtahed, A. *et al.* Reference range of liver corrected T1 values in a population
24 at low risk for fatty liver disease-a UK Biobank sub-study, with an appendix of
25 interesting cases. *Abdom Radiol (NY)* **44**, 72-84 (2019).
- 26 75. Karlsson, A. *et al.* Automatic and quantitative assessment of regional muscle
27 volume by multi-atlas segmentation using whole-body water-fat MRI. *J Magn*
28 *Reson Imaging* **41**, 1558-69 (2015).
- 29 76. Borga, M. *et al.* Validation of a fast method for quantification of intra-abdominal
30 and subcutaneous adipose tissue for large-scale human studies. *NMR Biomed* **28**,
31 1747-53 (2015).

- 1 77. West, J. *et al.* Feasibility of MR-Based Body Composition Analysis in Large Scale
2 Population Studies. *PLoS One* **11**, e0163332 (2016).
- 3 78. Linge, J. *et al.* Body Composition Profiling in the UK Biobank Imaging Study.
4 *Obesity (Silver Spring)* **26**, 1785-1795 (2018).
- 5 79. Borga, M. *et al.* Reproducibility and repeatability of MRI-based body composition
6 analysis. *Magn Reson Med* **84**, 3146-3156 (2020).
- 7 80. Bai, Y. *et al.* Resting-state functional connectivity of the sensory/somatomotor
8 network associated with sleep quality: evidence from 202 young male samples.
9 *Brain Imaging and Behavior*, 1-10 (2022).
- 10 81. Brooks, S.J., Katz, E.S. & Stamoulis, C. Shorter Duration and Lower Quality Sleep
11 Have Widespread Detrimental Effects on Developing Functional Brain Networks
12 in Early Adolescence. *Cerebral cortex communications* **3**, tgab062 (2022).
- 13 82. Gorgoni, M. *et al.* Sleep deprivation affects somatosensory cortex excitability as
14 tested through median nerve stimulation. *Brain Stimul* **7**, 732-9 (2014).
- 15 83. Rosenberg, J., Maximov, I., Reske, M., Grinberg, F. & Shah, N.J. "Early to bed,
16 early to rise": diffusion tensor imaging identifies chronotype-specificity.
17 *Neuroimage* **84**, 428-34 (2014).
- 18 84. McMahon, M., Malneedi, Y., Worthy, D.A. & Schnyer, D.M. Rest-activity rhythms
19 and white matter microstructure across the lifespan. *Sleep* **44**(2021).
- 20 85. Long, L. *et al.* Daytime napping, nighttime sleeping duration, and risk of
21 hepatocellular carcinoma and liver disease-related mortality. *JHEP Rep* **5**, 100819
22 (2023).
- 23 86. Um, Y.J. *et al.* Decrease in Sleep Duration and Poor Sleep Quality over Time Is
24 Associated with an Increased Risk of Incident Non-Alcoholic Fatty Liver Disease. *J*
25 *Pers Med* **12**(2022).
- 26 87. Imaizumi, H. *et al.* The Association between Sleep Duration and Non-Alcoholic
27 Fatty Liver Disease among Japanese Men and Women. *Obes Facts* **8**, 234-42
28 (2015).
- 29 88. McMullan, C.J., Curhan, G.C. & Forman, J.P. Association of short sleep duration
30 and rapid decline in renal function. *Kidney Int* **89**, 1324-30 (2016).

- 1 89. Ricardo, A.C. *et al.* Association of Sleep Duration, Symptoms, and Disorders with
2 Mortality in Adults with Chronic Kidney Disease. *Kidney Int Rep* **2**, 866-873
3 (2017).
- 4 90. Bo, Y. *et al.* Sleep and the Risk of Chronic Kidney Disease: A Cohort Study. *J Clin*
5 *Sleep Med* **15**, 393-400 (2019).
- 6 91. Feng, D. *et al.* Association between sleep duration and cardiac structure in
7 youths at risk for metabolic syndrome. *Sci Rep* **6**, 39017 (2016).
- 8 92. Khanji, M.Y. *et al.* Impact of Sleep Duration and Chronotype on Cardiac Structure
9 and Function: The UK Biobank Study. *Curr Probl Cardiol* **48**, 101688 (2023).
- 10 93. Bulik-Sullivan, B. *et al.* An atlas of genetic correlations across human diseases
11 and traits. *Nature Genetics* **47**, 1236-1241 (2015).
- 12 94. Chen, H.-L. *et al.* White matter damage and systemic inflammation in obstructive
13 sleep apnea. *Sleep* **38**, 361-370 (2015).
- 14 95. Stoffers, D. *et al.* The caudate: a key node in the neuronal network imbalance of
15 insomnia? *Brain* **137**, 610-20 (2014).
- 16 96. Sardi, N.F., Tobaldini, G., Morais, R.N. & Fischer, L. Nucleus accumbens mediates
17 the pronociceptive effect of sleep deprivation: the role of adenosine A2A and
18 dopamine D2 receptors. *Pain* **159**, 75-84 (2018).
- 19 97. Oishi, Y. *et al.* Slow-wave sleep is controlled by a subset of nucleus accumbens
20 core neurons in mice. *Nat Commun* **8**, 734 (2017).
- 21 98. Lazarus, M. *et al.* Arousal effect of caffeine depends on adenosine A2A receptors
22 in the shell of the nucleus accumbens. *J Neurosci* **31**, 10067-75 (2011).
- 23 99. Kritikou, I. *et al.* Sleep apnoea and visceral adiposity in middle-aged male and
24 female subjects. *Eur Respir J* **41**, 601-9 (2013).
- 25 100. Vgontzas, A.N. *et al.* Sleep apnea and daytime sleepiness and fatigue: relation to
26 visceral obesity, insulin resistance, and hypercytokinemia. *J Clin Endocrinol*
27 *Metab* **85**, 1151-8 (2000).
- 28 101. Shinohara, E. *et al.* Visceral fat accumulation as an important risk factor for
29 obstructive sleep apnoea syndrome in obese subjects. *J Intern Med* **241**, 11-8
30 (1997).

- 1 102. Mirrakhimov, A.E. Nonalcoholic fatty pancreatic disease and cardio-metabolic
2 risk: is there is a place for obstructive sleep apnea? *Cardiovasc Diabetol* **13**, 29
3 (2014).
- 4 103. Buniello, A. *et al.* The NHGRI-EBI GWAS Catalog of published genome-wide
5 association studies, targeted arrays and summary statistics 2019. *Nucleic Acids*
6 *Research* **47**, D1005-D1012 (2018).
- 7 104. Lane, J.M. *et al.* Genome-wide association analysis identifies novel loci for
8 chronotype in 100,420 individuals from the UK Biobank. *Nature communications*
9 **7**, 1-10 (2016).
- 10 105. Thorp, J.G. *et al.* Genetic heterogeneity in self-reported depressive symptoms
11 identified through genetic analyses of the PHQ-9. *Psychological Medicine* **50**,
12 2385-2396 (2020).
- 13 106. Khor, S.-S. *et al.* Genome-wide association study of HLA-DQB1* 06: 02 negative
14 essential hypersomnia. *PeerJ* **1**, e66 (2013).
- 15 107. Giambartolomei, C. *et al.* Bayesian test for colocalisation between pairs of
16 genetic association studies using summary statistics. *PLoS genetics* **10**, e1004383
17 (2014).
- 18 108. Kibinge, N.K., Relton, C.L., Gaunt, T.R. & Richardson, T.G. Characterizing the
19 causal pathway for genetic variants associated with neurological phenotypes
20 using human brain-derived proteome data. *The American Journal of Human*
21 *Genetics* **106**, 885-892 (2020).
- 22 109. Ly, S., Lee, D.A., Strus, E., Prober, D.A. & Naidoo, N. Evolutionarily Conserved
23 Regulation of Sleep by the Protein Translational Regulator PERK. *Curr Biol* **30**,
24 1639-1648 e3 (2020).
- 25 110. Park, G. *et al.* Neurodegeneration risk factor, EIF2AK3 (PERK), influences tau
26 protein aggregation. *J Biol Chem* **299**, 102821 (2023).
- 27 111. Torres-Berrio, A. *et al.* DCC Confers Susceptibility to Depression-like Behaviors in
28 Humans and Mice and Is Regulated by miR-218. *Biol Psychiatry* **81**, 306-315
29 (2017).
- 30 112. Vosberg, D.E., Leyton, M. & Flores, C. The Netrin-1/DCC guidance system:
31 dopamine pathway maturation and psychiatric disorders emerging in
32 adolescence. *Mol Psychiatry* **25**, 297-307 (2020).

- 1 113. Griesius, S. *et al.* Reduced expression of the psychiatric risk gene DLG2 (PSD93)
2 impairs hippocampal synaptic integration and plasticity.
3 *Neuropsychopharmacology* **47**, 1367-1378 (2022).
- 4 114. Kim, D.G. *et al.* Non-alcoholic fatty liver disease induces signs of Alzheimer's
5 disease (AD) in wild-type mice and accelerates pathological signs of AD in an AD
6 model. *J Neuroinflammation* **13**, 1 (2016).
- 7 115. Shang, Y., Widman, L. & Hagstrom, H. Nonalcoholic Fatty Liver Disease and Risk
8 of Dementia: A Population-Based Cohort Study. *Neurology* **99**, e574-e582 (2022).
- 9 116. Sancar, A. Cryptochrome: the second photoactive pigment in the eye and its role
10 in circadian photoreception. *Annu Rev Biochem* **69**, 31-67 (2000).
- 11 117. Knippschild, U. *et al.* The casein kinase 1 family: participation in multiple cellular
12 processes in eukaryotes. *Cell Signal* **17**, 675-89 (2005).
- 13 118. Zou, C. & Levine, E.M. Vsx2 controls eye organogenesis and retinal progenitor
14 identity via homeodomain and non-homeodomain residues required for high
15 affinity DNA binding. *PLoS Genet* **8**, e1002924 (2012).
- 16 119. Wycisk, K.A. *et al.* Mutation in the auxiliary calcium-channel subunit CACNA2D4
17 causes autosomal recessive cone dystrophy. *Am J Hum Genet* **79**, 973-7 (2006).
- 18 120. Takahashi, M. *et al.* Chronotype and social jetlag influence human circadian clock
19 gene expression. *Sci Rep* **8**, 10152 (2018).
- 20 121. Dickinson, M.E. *et al.* High-throughput discovery of novel developmental
21 phenotypes. *Nature* **537**, 508-514 (2016).
- 22 122. Nutt, D., Wilson, S. & Paterson, L. Sleep disorders as core symptoms of
23 depression. *Dialogues Clin Neurosci* **10**, 329-36 (2008).
- 24 123. Riemann, D., Krone, L.B., Wulff, K. & Nissen, C. Sleep, insomnia, and depression.
25 *Neuropsychopharmacology* **45**, 74-89 (2020).
- 26 124. Duggan, K.A., Friedman, H.S., McDevitt, E.A. & Mednick, S.C. Personality and
27 healthy sleep: the importance of conscientiousness and neuroticism. *PLoS One* **9**,
28 e90628 (2014).
- 29 125. Slavish, D.C. *et al.* Neuroticism, rumination, negative affect, and sleep: Examining
30 between- and within-person associations. *Pers Individ Dif* **123**, 217-222 (2018).
- 31 126. Morse, A.M. & Sanjeev, K. Narcolepsy and Psychiatric Disorders: Comorbidities
32 or Shared Pathophysiology? *Med Sci (Basel)* **6**(2018).

- 1 127. Linke, M. & Jankowski, K.S. Chronotype in individuals with schizophrenia: A
2 meta-analysis. *Schizophr Res* **235**, 74-79 (2021).
- 3 128. Malhotra, A. & Loscalzo, J. Sleep and cardiovascular disease: an overview. *Prog*
4 *Cardiovasc Dis* **51**, 279-84 (2009).
- 5 129. Nagai, M., Hoshida, S. & Kario, K. Sleep duration as a risk factor for
6 cardiovascular disease- a review of the recent literature. *Curr Cardiol Rev* **6**, 54-
7 61 (2010).
- 8 130. Ayaki, M., Muramatsu, M., Negishi, K. & Tsubota, K. Improvements in sleep
9 quality and gait speed after cataract surgery. *Rejuvenation Res* **16**, 35-42 (2013).
- 10 131. Zheng, L., Wu, X.H. & Lin, H.T. The effect of cataract surgery on sleep quality: a
11 systematic review and Meta-analysis. *Int J Ophthalmol* **10**, 1734-1741 (2017).
- 12 132. Brown, B.C., Asian Genetic Epidemiology Network Type 2 Diabetes, C., Ye, C.J.,
13 Price, A.L. & Zaitlen, N. Transethnic Genetic-Correlation Estimates from Summary
14 Statistics. *Am J Hum Genet* **99**, 76-88 (2016).
- 15 133. Grotzinger, A.D. *et al.* Genomic structural equation modelling provides insights
16 into the multivariate genetic architecture of complex traits. *Nat Hum Behav* **3**,
17 513-525 (2019).
- 18 134. Huang, J. *et al.* Sleep, major depressive disorder, and Alzheimer disease: A
19 Mendelian randomization study. *Neurology* **95**, e1963-e1970 (2020).
- 20 135. Mainieri, G. *et al.* The genetics of sleep disorders in children: a narrative review.
21 *Brain Sciences* **11**, 1259 (2021).
- 22 136. Bonvalet, M., Ollila, H.M., Ambati, A. & Mignot, E. Autoimmunity in narcolepsy.
23 *Current opinion in pulmonary medicine* **23**, 522 (2017).
- 24 137. Mahoney, C.E., Cogswell, A., Koralnik, I.J. & Scammell, T.E. The neurobiological
25 basis of narcolepsy. *Nat Rev Neurosci* **20**, 83-93 (2019).
- 26 138. Wang, Q. *et al.* Causal associations between sleep traits and brain structure: a
27 bidirectional Mendelian randomization study. *Behav Brain Funct* **19**, 17 (2023).
- 28 139. Tse, L.A. *et al.* Timing and Length of Nocturnal Sleep and Daytime Napping and
29 Associations With Obesity Types in High-, Middle-, and Low-Income Countries.
30 *JAMA Netw Open* **4**, e2113775 (2021).

- 1 140. Papandreou, C. *et al.* Long Daytime Napping Is Associated with Increased
2 Adiposity and Type 2 Diabetes in an Elderly Population with Metabolic
3 Syndrome. *J Clin Med* **8**(2019).
- 4 141. Pillar, G. & Shehadeh, N. Abdominal fat and sleep apnea: the chicken or the egg?
5 *Diabetes Care* **31 Suppl 2**, S303-9 (2008).
- 6 142. Bai, W. *et al.* A population-based phenome-wide association study of cardiac and
7 aortic structure and function. *Nature Medicine* **26**, 1654-1662 (2020).
- 8 143. Bycroft, C. *et al.* The UK Biobank resource with deep phenotyping and genomic
9 data. *Nature* **562**, 203-209 (2018).
- 10 144. Zhu, J. *et al.* Physical and Mental Activity, Disease Susceptibility, and Risk of
11 Dementia: A Prospective Cohort Study Based on UK Biobank. *Neurology* **99**,
12 e799-e813 (2022).
- 13 145. Hamer, M., Sharma, N. & Batty, G.D. Association of objectively measured
14 physical activity with brain structure: UK Biobank study. *J Intern Med* **284**, 439-
15 443 (2018).
- 16 146. Petermann-Rocha, F. *et al.* Dose-response association between device-measured
17 physical activity and incident dementia: a prospective study from UK Biobank.
18 *BMC Med* **19**, 305 (2021).
- 19 147. Dempsey, P.C. *et al.* Physical activity volume, intensity, and incident
20 cardiovascular disease. *Eur Heart J* **43**, 4789-4800 (2022).
- 21 148. Doherty, A. *et al.* Large Scale Population Assessment of Physical Activity Using
22 Wrist Worn Accelerometers: The UK Biobank Study. *PLoS One* **12**, e0169649
23 (2017).
- 24 149. Mason, K.E., Pearce, N. & Cummins, S. Associations between fast food and
25 physical activity environments and adiposity in mid-life: cross-sectional,
26 observational evidence from UK Biobank. *Lancet Public Health* **3**, e24-e33 (2018).
- 27 150. Bradbury, K.E., Guo, W., Cairns, B.J., Armstrong, M.E. & Key, T.J. Association
28 between physical activity and body fat percentage, with adjustment for BMI: a
29 large cross-sectional analysis of UK Biobank. *BMJ Open* **7**, e011843 (2017).
- 30 151. Guo, W., Fensom, G.K., Reeves, G.K. & Key, T.J. Physical activity and breast
31 cancer risk: results from the UK Biobank prospective cohort. *Br J Cancer* **122**,
32 726-732 (2020).

- 1 152. Murray, J.M., Coleman, H.G. & Hunter, R.F. Physical activity and cancer risk:
2 Findings from the UK Biobank, a large prospective cohort study. *Cancer*
3 *Epidemiol* **68**, 101780 (2020).
- 4 153. Jiang, L. *et al.* A resource-efficient tool for mixed model association analysis of
5 large-scale data. *Nature genetics* **51**, 1749 (2019).
- 6 154. Watanabe, K., Taskesen, E., Bochoven, A. & Posthuma, D. Functional mapping
7 and annotation of genetic associations with FUMA. *Nature Communications* **8**,
8 1826 (2017).
- 9 155. Consortium, I.H. Integrating common and rare genetic variation in diverse
10 human populations. *Nature* **467**, 52-58 (2010).
- 11 156. Hemani, G. *et al.* The MR-Base platform supports systematic causal inference
12 across the human phenome. *Elife* **7**(2018).
- 13 157. Bowden, J., Davey Smith, G., Haycock, P.C. & Burgess, S. Consistent Estimation in
14 Mendelian Randomization with Some Invalid Instruments Using a Weighted
15 Median Estimator. *Genet Epidemiol* **40**, 304-14 (2016).

16

17 **METHODS**

18 **Phenotypic sleep-imaging analyses.**

19 The UKB study (<https://www.ukbiobank.ac.uk/>) recruited approximately half a million
20 participants aged between 40 and 69 years between 2006 and 2010⁷¹. The ethics approval
21 of the UKB study was from the North West Multicentre Research Ethics Committee
22 (approval number: 11/NW/0382). Here we examined the phenotypic associations
23 between sleep and organs using multi-modal MRI measurements of the brain, heart, and
24 abdomen, as well as derived OCT traits of the retina. Detailed procedures to generate
25 brain and cardiac MRI traits used in our analyses can be found in previous
26 papers^{65,67,69,72,142}. All these imaging traits were generated from the raw images in
27 Category 100003 (<https://biobank.ndph.ox.ac.uk/showcase/label.cgi?id=100003>). Within
28 the brain, three major brain MRI modalities were examined: 1) brain anatomical and
29 neuropathological structures from structural MRI, including regional brain volumes⁶⁵ and
30 cortical thickness traits⁷²; 2) white matter microstructures from diffusion MRI, including
31 multiple DTI parameters⁶⁷; and 3) intrinsic and extrinsic functional organizations of the
32 cerebral cortex from resting and task fMRI⁶⁹. Regarding the heart, we used 82 traits

1 extracted from short-axis, long-axis, and aortic cine cardiac MRI⁷², including global and
2 regional measures of 4 cardiac chambers (the left ventricle, right ventricle, left atrium,
3 and right atrium), as well as 2 aortic sections (the ascending aorta and descending aorta).
4 Abdominal imaging traits comprised MRI data of the liver, kidneys, lungs, pancreas,
5 spleen, and body muscle/fat composition^{22-24,73-79}. For the eyes, derived OCT measures
6 were used, providing measurements into the thickness of different retinal layers and their
7 subfields, as well as the vertical cup-to-disc ratio and disc diameter⁷⁰. Detailed
8 information regarding the collection and processing of imaging data, multi-organ
9 diseases/traits, and sleep data can be found in the **Supplementary Note**.

10

11 In the phenotypic analysis, we used the unrelated white British imaging individuals in UKB
12 phases 1 to 3 data release as the discovery sample (mean age range = (45,82), mean =
13 64.15, standard error = 7.67, and proportion of females was 51.6%). We fitted linear
14 models for each pair of sleep and imaging traits (average $n = 35,893$ for self-reported
15 sleep traits, average $n = 15,337$ for accelerometer-derived sleep traits, **Table S2**). We
16 adjusted for the basic set of covariates, including age (at assessment and imaging), age
17 squared, sex, age-sex interaction, age-squared-sex interaction, assessment center code,
18 imaging site code, top 10 genetic principal components (PCs)¹⁴³, BMI, and Townsend
19 deprivation index (TDI). For device-measured traits, we also adjusted for age at
20 accelerometry measurement and season of wearing the device. Previous UKB studies on
21 sleep or physical activity traits frequently accounted for these basic covariates, such as
22 assessment center^{46,51}, BMI¹⁴⁴⁻¹⁴⁶, TDI^{144,146,147}, and season of wearing the device¹⁴⁸. For
23 all brain MRI traits, we adjusted for volumetric scaling, head motion, head motion-
24 squared, brain position, and brain position-squared^{64,66}. For regional brain volumes and
25 regional cortical thickness measures, we additionally adjusted for the total brain volume
26 and global mean thickness, respectively, to remove the global effects. For abdominal MRI
27 traits, we adjusted for standing height. For cardiac MRI traits, we adjusted for standing
28 height, standing height to the 1.7th power, standing height to the 2.1th power, standing
29 height cubed, weight, body surface area to the 1.5th power, pulse rate, FVC, forced
30 expiratory volume in the first second, preserved ejection fraction, peripheral and central
31 pulse pressure during pulse wave analysis, average heart rate, body surface area, whole
32 body fat-free mass, pulse wave arterial stiffness index, and waist-to-hip ratio⁷². The values

1 greater than five times the median absolute deviation from the median were removed in
2 each trait and continuous covariate variable. The P values from the two-sided t test were
3 reported (R version 3.6.0) and we controlled a 5% false discovery rate (FDR) using the
4 Benjamini-Hochberg procedure.

5

6 To evaluate the robustness of these results, we used two approaches. In both approaches,
7 we examined whether the significant associations identified in the discovery analysis had
8 the same effect direction and had a P value less than 0.05. The first one was to repeat the
9 analysis using a small hold-out set of data from non-white British UKB subjects (average
10 $n = 3,955$ for self-reported sleep traits and average $n = 1,383$ for accelerometer-derived
11 sleep traits). The second was to adjust a more comprehensive set of covariates on the
12 same discovery sample (that is, unrelated white British subjects). For brain MRI traits, we
13 additionally incorporated covariates related to diet (e.g. vegetable and meat intake),
14 socioeconomics (e.g., education, employment status), bone minerals, overall fitness (e.g.
15 disability), cognitive functions, social support (e.g. leisure/social activity frequency),
16 family disease history, diagnosed medical conditions from both questionnaire and ICD-10
17 (e.g. cancer, diabetes). For non-brain imaging traits, covariates related to cognitive
18 functions and social support were excluded as they contained too many missing values
19 and exhibited limited relevance to these imaging traits. This broader range of covariates
20 was established by referencing many previous human health studies on sleep and other
21 physical activity traits. For example, studies examining the association between brain
22 structures, dementia, and sleep highlighted the relevance of socioeconomic factors, such
23 as education level and employment status, in analyzing connections with brain-related
24 traits^{144-147,149}. Similarly, other research has demonstrated significant associations with
25 bone minerals²⁰, body fat percentage¹⁵⁰, and cancer risk^{151,152}, which motivated us to also
26 include these body fitness and disease variables as covariates.

27

28 **Genetic sleep-imaging analyses.**

29 Our genetic analyses were mainly based on GWAS summary statistics of sleep and imaging
30 traits. We systematically looked for the genomic loci that were reported to be significant
31 for both sleep and imaging traits. First, we obtained the reported imaging-associated
32 variants from previous studies, including 101 regional brain volumes⁶⁵, 63 cortical

1 thickness⁷², 110 DTI parameters⁶⁷, 1,999 network-level parcellation-based resting and
2 task fMRI traits⁶⁹ (1,080 for resting and 919 for task), 82 cardiac MRI traits⁷², and 46
3 derived OCT traits⁷⁰. Bonferroni correction has been used in each of these studies to
4 control for the number of imaging traits analyzed, which resulted in imaging modality-
5 specific P value thresholds used in these studies, including $P < 4.55 \times 10^{-10}$ for regional brain
6 volumes, $P < 7.94 \times 10^{-10}$ for cortical thickness, $P < 2.32 \times 10^{-10}$ for DTI parameters, $P <$
7 4.63×10^{-11} for resting fMRI, $P < 5.44 \times 10^{-11}$ for task fMRI, $P < 6.10 \times 10^{-10}$ for cardiac MRI,
8 and $P < 1.09 \times 10^{-9}$ for derived OCT measures.

9

10 Second, we performed GWAS for the 41 abdominal MRI traits using linear mixed effect
11 models via fastGWA¹⁵³. We used the imputed genotyping data from the UKB study,
12 adhering to the standard quality controls used in previous studies⁷². These included 1)
13 excluding individuals with a missing genotype rate greater than 0.1; 2) removing variants
14 with a missing genotype rate over 0.1; 3) discarding variants with a minor allele frequency
15 (MAF) less than 0.01; 4) eliminating variants that failed the Hardy-Weinberg equilibrium
16 test at the 1×10^{-7} level; and 5) omitting variants with an imputation INFO score below 0.8.
17 We adjusted for the effects of standing height, BMI, age, sex, assessment center, age-
18 squared, age-sex interaction, age-squared-sex interaction, and top 40 genetic PCs¹⁴³. We
19 used the $P < 1.22 \times 10^{-9}$ (that is, $5 \times 10^{-8}/41$) as the GWAS significance threshold for
20 abdominal MRI and defined the independent ($LD\ r^2 < 0.1$) significant genetic loci using
21 FUMA¹⁵⁴ (version v1.3.8).

22

23 Next, among these imaging-associated variants (and variants in LD with them, $r^2 \geq 0.6$),
24 we searched for those that were also reported in the NHGRI-EBI GWAS Catalog¹⁰³
25 (<https://www.ebi.ac.uk/gwas/>, version 2022-07-09) to be significant in previous GWAS of
26 various sleep traits. For obtained sleep-significant genetic variants, we further searched
27 to see whether they were reported brain eQTLs on MetaBrain
28 (<https://www.metabrain.nl/>)¹⁸⁹. Finally, we tested for whether the sleep and imaging
29 traits had shared causal genetic variants using the Bayesian colocalization test¹³⁰ with
30 default settings.

31

1 We examined genetic correlations between sleep and imaging traits via LD score
2 regression⁹³ (<https://github.com/bulik/ldsc/>, version 1.0.1). We collected and used 34
3 sets of publicly available GWAS summary statistics of sleep traits (**Table S3**). For imaging
4 traits, we screened the 101 regional brain volumes⁶⁵, 63 cortical thickness⁷², 110 DTI
5 parameters⁶⁷, 90 network-level parcellation-based resting and task fMRI traits,
6 respectively⁶⁹, 82 cardiac MRI traits⁷², 41 abdominal MRI traits^{22-24,73-79}, and 46 derived
7 OCT measures⁷⁰. To evaluate the genetic correlations between sleep and diseases
8 associated with these organs, we systematically collected 113 GWAS summary statistics
9 of 50 diseases/traits span a wide range of organs, covering 7 neurological/psychiatric
10 disorders, 13 cardiovascular diseases/traits, 2 diabetes, 2 eye diseases, 10 kidney
11 diseases/traits, 4 liver diseases/traits, and 12 lung diseases/traits (See **Table S7** for a full
12 list of the 113 GWAS summary statistics and **Supplementary Note** for more details). We
13 screened them with the 34 sets of sleep GWAS summary statistics. We used the default
14 setups of LDSC, in which the HapMap3¹⁵⁵ variants and the variants in the major
15 histocompatibility complex region were removed, and the LD scores were calculated from
16 the 1000 Genomes data.

17

18 Cross-population genetic correlation was analyzed using Popcorn¹³². With the 34 publicly
19 available sleep GWAS summary statistics from the European ancestry (**Table S3**), we
20 analyzed cross-population genetic correlations with 23 diseases/traits from the East Asian
21 ancestry (**Table S9**). We used the recommended regression-based estimator and the pre-
22 computed scores provided by the authors. These scores were based on 1000 Genome
23 EUR and EAS as reference panels for the European and East Asian populations,
24 respectively.

25

26 MR analyses were performed with the R package TwoSampleMR¹⁵⁶
27 (<https://mrcieu.github.io/TwoSampleMR/>) with various methods. Inverse variance
28 weighted was used as the main analysis, and MR Egger, simple mode, weighted mode,
29 and weighted median¹⁵⁷ were used as sensitivity analyses. Our bidirectional MR analyses
30 were performed using published GWAS summary statistics between pairs of sleep and
31 diseases/traits that showed evidence of genetic correlations in the LD score regression
32 analysis at a 5% FDR level. We used 34 publicly available sleep GWAS summary statistics

1 with samples from the UK Biobank, which was the same as in the genetic correlation
2 analysis. GWAS of diseases/traits that had no overlapping sample with UKB were used
3 (see **Table S11** for the full list of diseases/traits GWAS used in the MR analyses). To select
4 independent strong genetic instrumental variables, exposure GWAS summary statistics
5 were clumped with the P value significance threshold being 5×10^{-8} . The physical distance
6 threshold for clumping was $kb = 10,000$, the LD threshold for clumping was $r^2 = 0.01$, and
7 we used the 1000 Genomes European reference panel. Harmonization was performed to
8 ensure the effects of each genetic variant on exposure and outcome correspond to each
9 other.

10

11 We conducted mediation analyses using the R package GenomicSEM¹³³
12 (<https://github.com/GenomicSEM/GenomicSEM>). We selected 623 imaging-disease-
13 sleep combinations that exhibited pairwise significant genetic correlations at a 5% FDR
14 level and subsequently performed mediation analyses on these chosen combinations. For
15 each combination, we fitted models of imaging and sleep traits both with and without
16 mediation by disease. We reported the combinations where the genetic correlations
17 between imaging and sleep traits were no longer significant after mediation by disease at
18 a 5% FDR level. See **Table S13** for a full list of the 623 combinations of imaging, disease,
19 and sleep traits that were selected for further mediation analyses, as well as the
20 mediation analyses results.

21

22 **Code availability**

23 We made use of publicly available software and tools. The codes are available upon
24 reasonable request.

25

26 **Data availability**

27 The GWAS summary statistics for brain MRI, cardiac MRI, as well as for derived OCT traits,
28 can be accessed from <https://bigkp.org/>, <https://heartkp.org/>, and <https://eyekp.org/>,
29 respectively. The GWAS summary statistics for the abdominal MRI traits generated in our
30 study will be publicly released upon publication. GWAS summary statistics of sleep and
31 diseases used in this study are publicly available, and the details can be found in the

1 Supplementary Tables and the Supplementary Note of this study. The individual-level UK
2 Biobank data used in this study can be obtained from <https://www.ukbiobank.ac.uk/>.

3

4 **Figure legends**

5 **Fig. 1 Study overview.**

6 **(A)** Our study aimed to demonstrate the connections between sleep traits and brain and
7 body health using multi-organ imaging, genetic, and disease data. We assessed organ
8 structure and function through imaging traits and considered their related clinical
9 outcomes. **(B)** Encompassing a diverse range of imaging modalities, our study included
10 brain imaging traits such as structural MRI, diffusion MRI, resting and task fMRI; cardiac
11 MRI such as short-axis, long-axis, and aortic cine images; abdominal MRI such as derived
12 measurements of liver, kidney, lung, pancreas, spleen, and abdominal fat/muscle
13 composition; and retinal derived OCT measures. Multiple sleep traits were examined,
14 including ease of getting up in the morning, chronotype, nap during the day, insomnia,
15 snoring, narcolepsy, as well as self-reported and accelerometer-derived sleep duration
16 measures. We used individual-level imaging and sleep data from the UKB study, as well
17 as the publicly available sleep GWAS summary statistics. **(C)** In addition, we examined 50
18 clinical outcomes related to the organs that have imaging data.

19

20 **Fig. 2 Phenotypic and genetic sleep-imaging associations.**

21 **(A)** Selected phenotypic associations between sleep traits and multi-organ imaging traits.
22 The color represents correlation estimates. Associations that passed the FDR rate of 5%
23 ($P < 1.60 \times 10^{-2}$) in the discovery sample and survived the two validation approaches were
24 marked with an asterisk. Associations that passed the FDR rate of 5% in the discovery
25 sample but failed in any of the two validation approaches were marked with a plus sign.
26 See **Table S1** for more information on imaging traits. **(B)** Selected genetic correlations
27 between sleep and multi-organ imaging traits. The color represents correlation estimates.
28 Associations that passed the FDR rate of 5% ($P < 5.08 \times 10^{-4}$) were marked with an asterisk.
29 **(C)** Sleep-imaging pairs were significant in both phenotypic and genetic correlation
30 analyses at a 5% FDR level. We illustrate genetic correlation (y-axis) and phenotypic

1 correlation (x-axis) between sleep and imaging traits. The color represents imaging
2 categories (left panel) or sleep traits (right panel).

3

4 **Fig. 3 Genomic loci associated with both sleep and imaging traits.**

5 **(A)** In the NHGRI-EBI GWAS catalog, we found shared genetic influences between sleep
6 and imaging traits in 51 genomic loci (names are in black). That is, sleep and imaging
7 GWAS reported associated variants in these loci and their index variants were in linkage
8 disequilibrium (LD, $r^2 \geq 0.6$). Each imaging modality is labeled with a different color. We
9 tagged a wide range of reported sleep traits and grouped them into chronotype (e.g.,
10 morningness and morning person), insomnia (e.g., insomnia and insomnia symptoms),
11 sleep duration (e.g., sleep duration long sleep and short sleep), and others, such as
12 snoring, hypersomnia, getting up, and daytime nap. Each sleep trait is labeled with a
13 different shape. **(B)** We further summarized the results into a table, where the x-axis
14 represents the 51 genomic regions, and the y-axis displays the sleep traits. Each imaging
15 modality is labeled with a different color and the dark purple color is used when more
16 than one imaging modalities are observed in the locus.

17

18 **Fig. 4 Selected genetic loci that were associated with both sleep and brain imaging traits.**

19 **(A)** In 1q25.2, we observed colocalization between chronotype (index variant rs975025)
20 and the mean axial diffusivity of the splenium of the corpus callosum tract (SCC AD, index
21 variant rs755699529). The posterior probability of Bayesian colocalization analysis for the
22 shared causal variant hypothesis (PPH4) is 0.976. **(B)** In 14q32.2, we observed
23 colocalization between snoring (index variant rs2664299) and volume of the left thalamus
24 proper (index variant rs2664299). The PPH4 of Bayesian colocalization analysis is 0.997.
25 We also observed the shared associations (LD $r^2 \geq 0.6$) with self-reported math ability,
26 educational attainment, cognitive performance, and smoking initiation. **(C)** In 2q14.1, we
27 observed colocalization between sleep duration (index variant rs62158206) and resting
28 functional connectivity between the somatomotor and auditory networks (index variant
29 rs62158170). The PPH4 of Bayesian colocalization analysis is 0.991. We also observed the
30 shared associations with insomnia and diastolic blood pressure. **(D)** In 19q13.32, we

1 observed colocalization between insomnia (index variant rs429358) and task functional
2 connectivity in the secondary visual network (index variant rs429358). The PPH4 of
3 Bayesian colocalization analysis is 0.98. We also observed the shared associations with
4 Alzheimer's disease, cognitive impairment, type 2 diabetes, myocardial infarction, and
5 total cholesterol levels.

6

7 **Fig. 5 Selected genetic loci that were associated with both sleep and non-brain imaging**
8 **traits.**

9 **(A)** In 11q13.2, we observed colocalization between chronotype (index variant rs662094)
10 and the muscle fat infiltration in the left posterior thigh (index variant rs662094). The
11 posterior probability of Bayesian colocalization analysis for the shared causal variant
12 hypothesis (PPH4) is 0.986. We also observed the shared associations ($LD\ r^2 \geq 0.6$) with
13 bipolar disorder and nonatopic asthma. **(B)** In 11p11.2, we observed colocalization
14 between insomnia (index variant rs10838708) and regional myocardial-wall thickness at
15 end-diastole (index variant rs10838708). The PPH4 of Bayesian colocalization analysis is
16 0.97. **(C)** In 12p13.33, we observed colocalization between chronotype (index variant
17 rs3782860) and the average thickness measured between the inner and outer
18 photoreceptor segments (ISOS) to the retinal pigment epithelium (RPE) across all
19 subfields in the left eye (index variant rs2080402). The PPH4 of Bayesian colocalization
20 analysis is 0.978. We also observed the shared associations with chronic kidney disease
21 and estimated glomerular filtration rate. **(D)** In 6q14.2, we observed colocalization
22 between snoring (index variant rs2207944) and the average inner nuclear layer (INL)
23 thickness across all subfields in the right eye (index variant rs7752421). The PPH4 of
24 Bayesian colocalization analysis is 0.883. We also observed the shared associations with
25 bipolar disorder, smoking initiation, and cognitive ability.

26

27 **Fig. 6 Genetic connections between sleep and multi-organ diseases/traits as well as**
28 **the mediation effects of disease.**

29 **(A)** Selected genetic correlations between sleep traits (x -axis) and diseases (y -axis) across
30 different organs. The color represents correlation estimates. Associations that passed a
31 5% FDR rate ($P < 1.55 \times 10^{-2}$) were marked with an asterisk. See **Tables S3** and **S7** for more

1 information of sleep traits and diseases/traits, respectively. **(B)** $-\log_{10}(P\text{-value})$ between
2 sleep and diseases/traits. Sleep traits were highlighted with different colors. A red dashed
3 line represents the P value threshold from Bonferroni correction ($P < 1.30 \times 10^{-5}$), and a
4 black dashed line represents P value threshold from a 5% FDR rate ($P < 1.55 \times 10^{-2}$). **(C)**
5 Summary of genetic correlations and MR results between sleep and diseases/traits. A
6 circle next to a disease/trait represents a genetic correlation between a sleep trait and
7 the disease/trait. The colors within the circles represent different sleep traits. The arrows
8 represent in MR results. Specifically, an upward arrow represents genetic causality from
9 diseases/traits to sleep, whereas a downward arrow represents genetic causality from
10 sleep to diseases/traits. Both upward and downward arrows represent bi-directional
11 causality. **(D)** Summary of mediation effects of diseases on selected associations between
12 imaging and sleep traits. The marginal GC represents the marginal genetic correlation
13 between imaging and sleep traits. The GC reduction is calculated as the difference in
14 genetic correlations between imaging and sleep traits with and without mediation by
15 disease, divided by the marginal genetic correlation estimates.

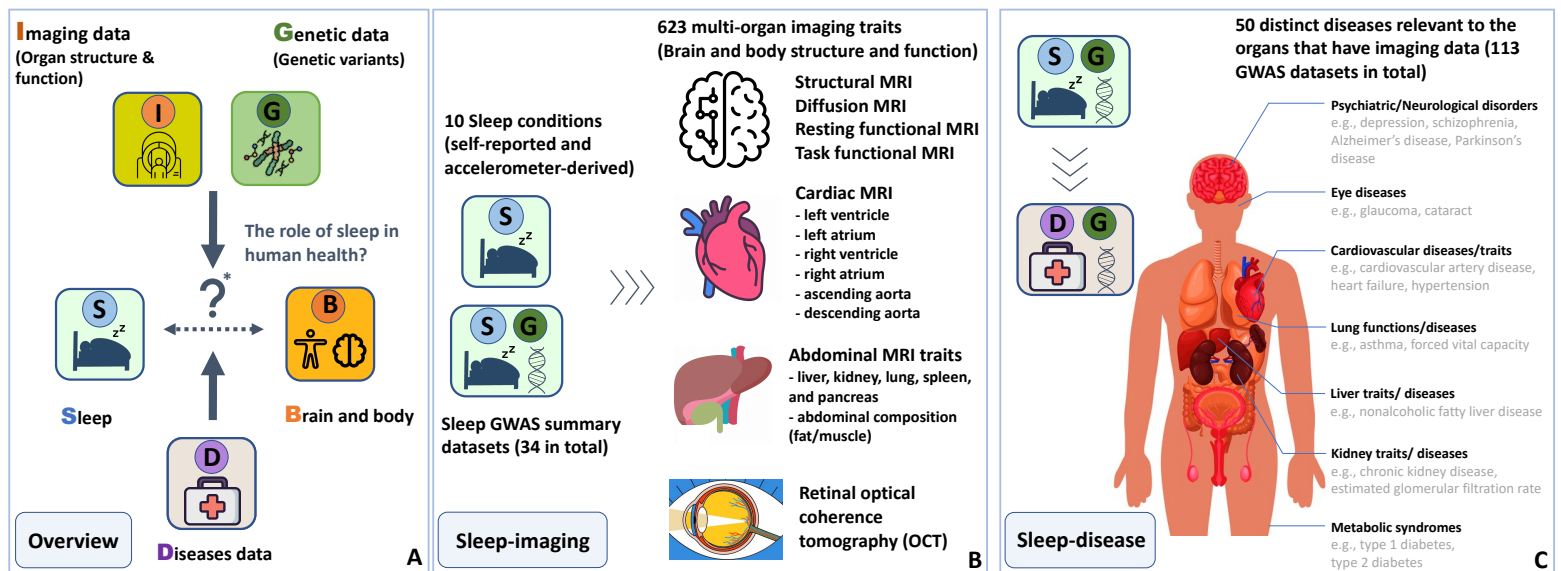
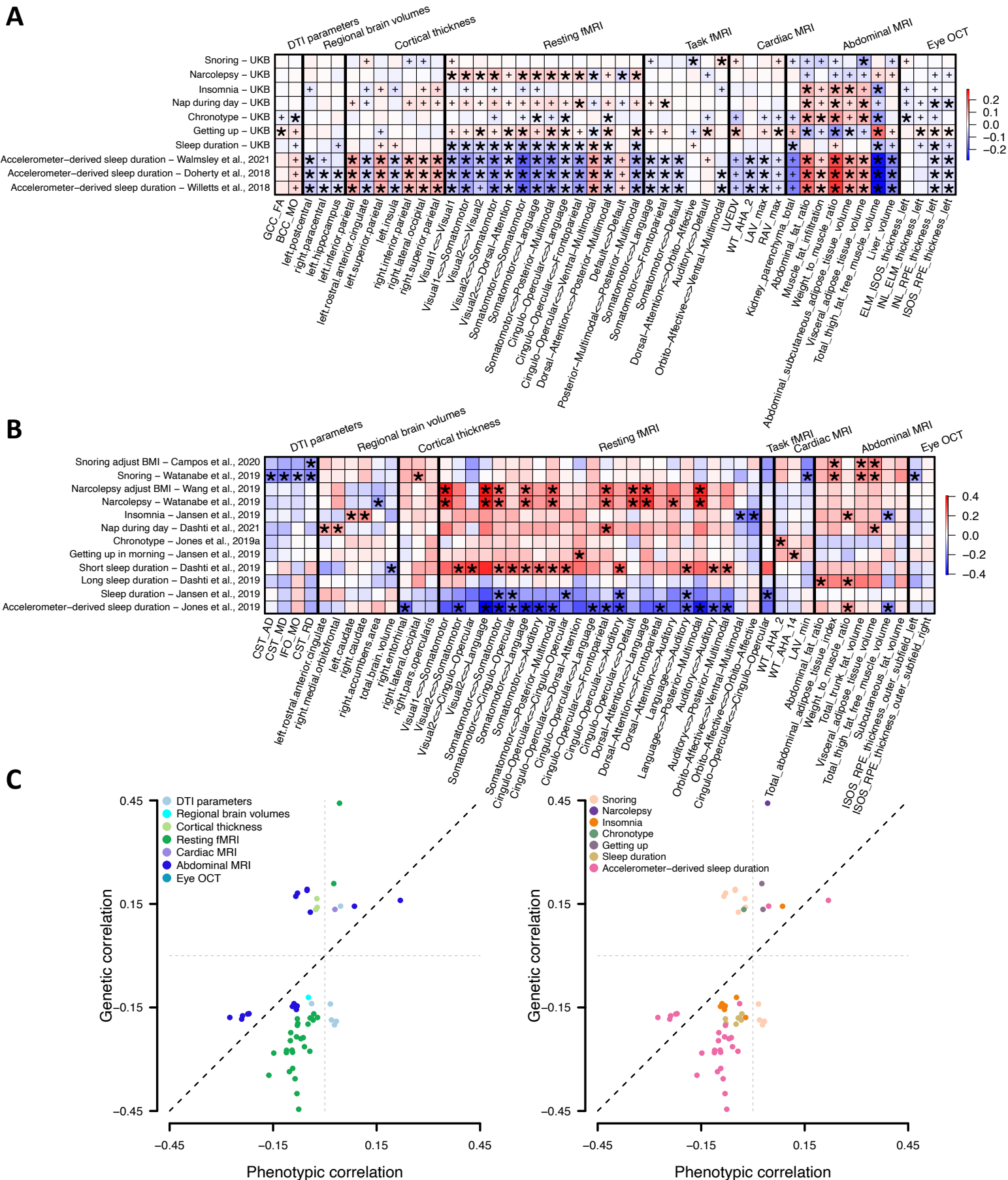


Figure 1



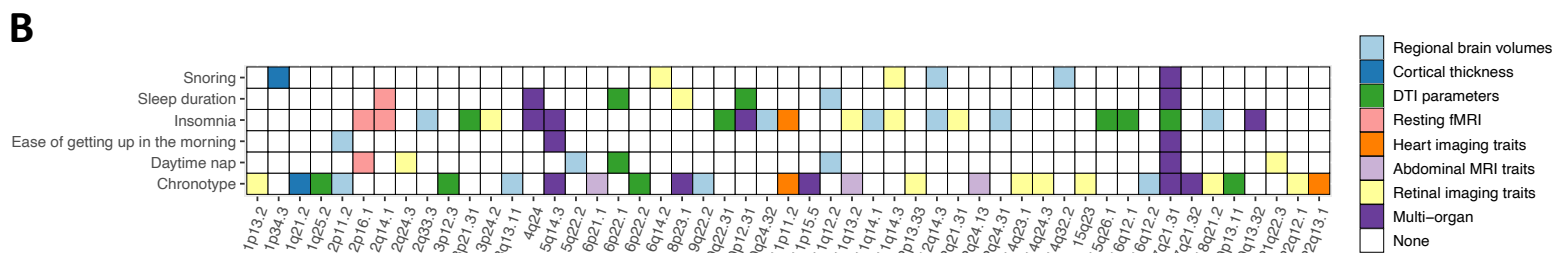
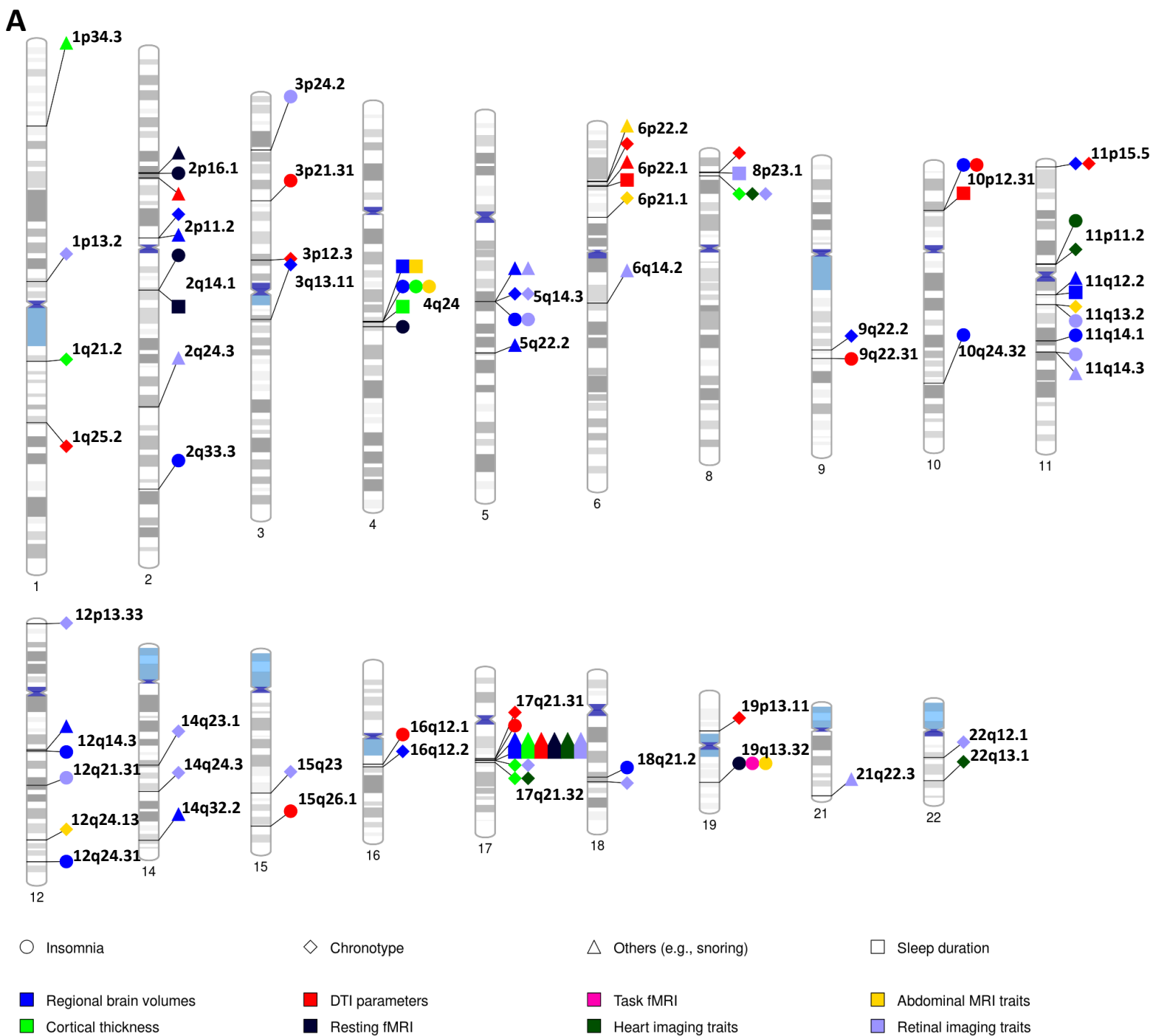
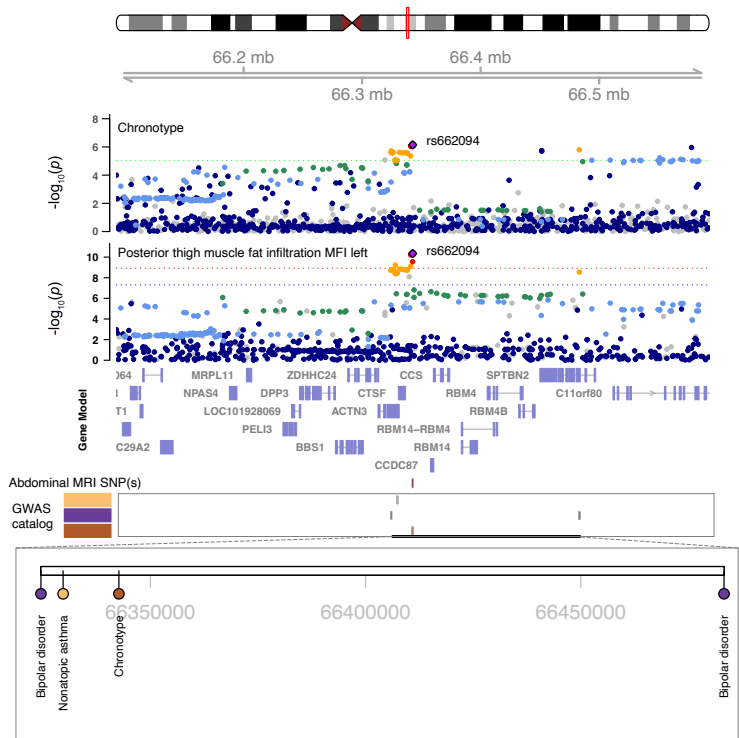


Figure 3

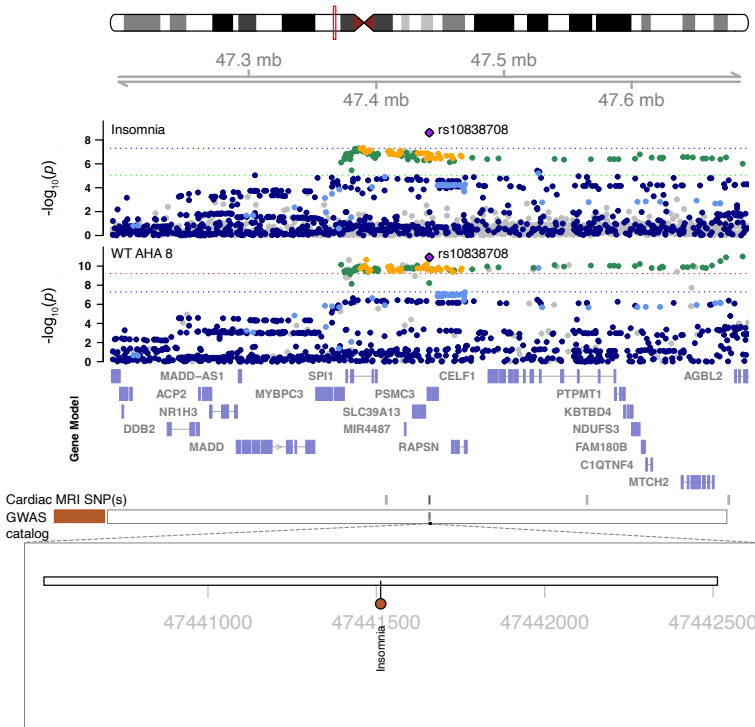
A

chr11, Region: 11p13.2



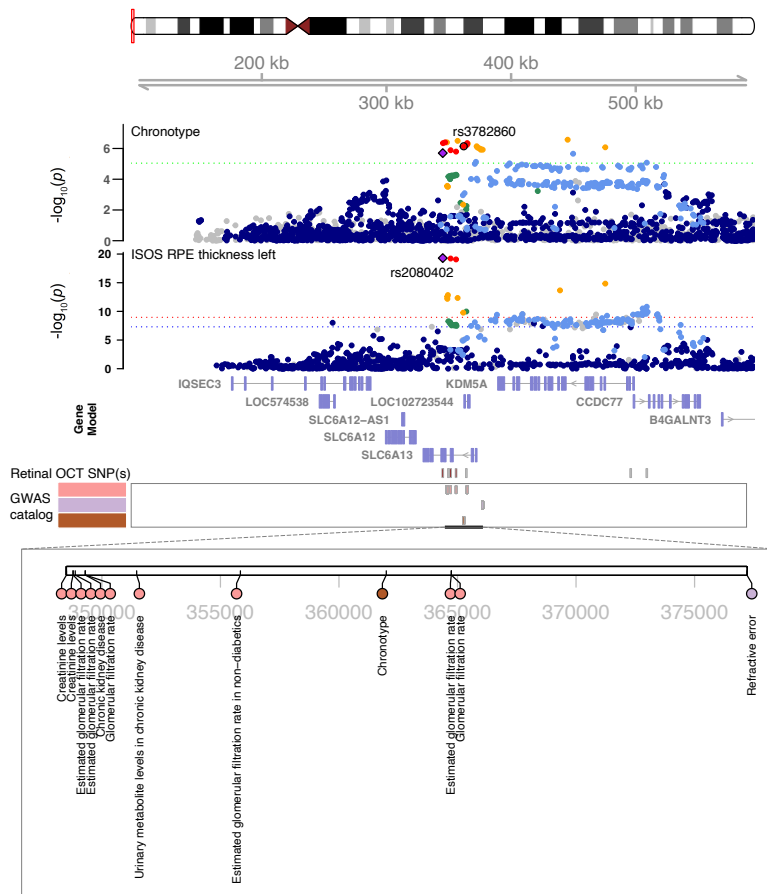
B

chr11, Region: 11p11.2



C

chr12, Region: 12p13.33



D

chr6, Region: 6q14.2

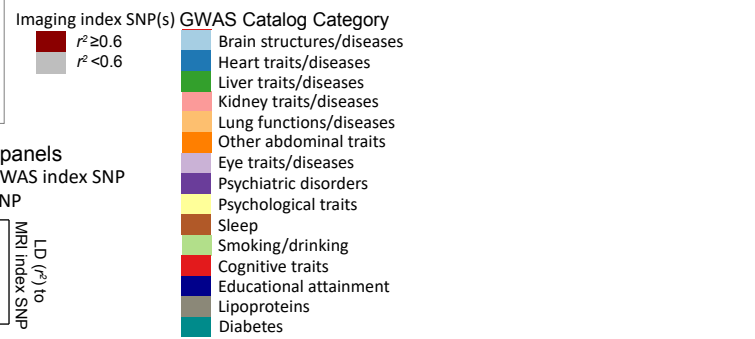
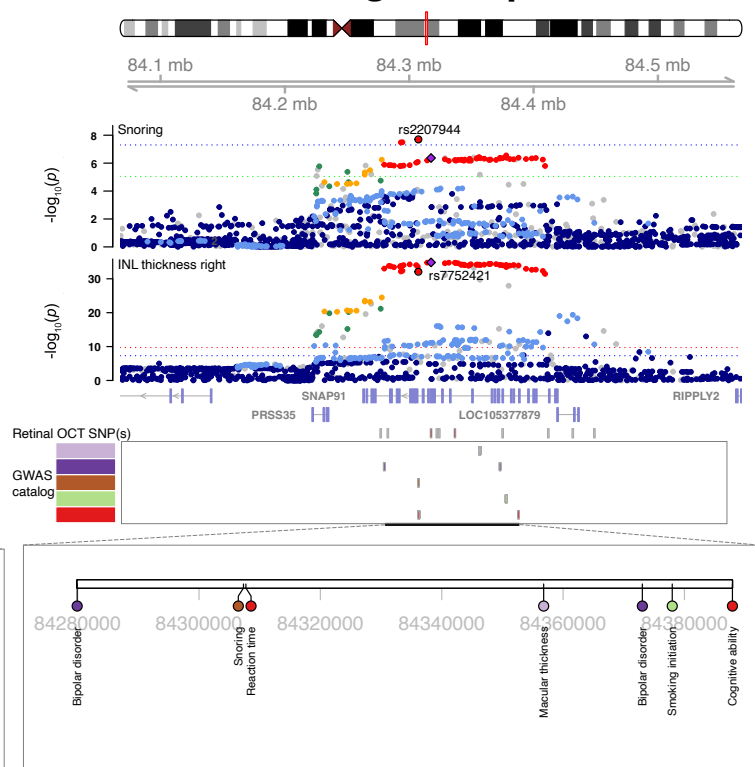
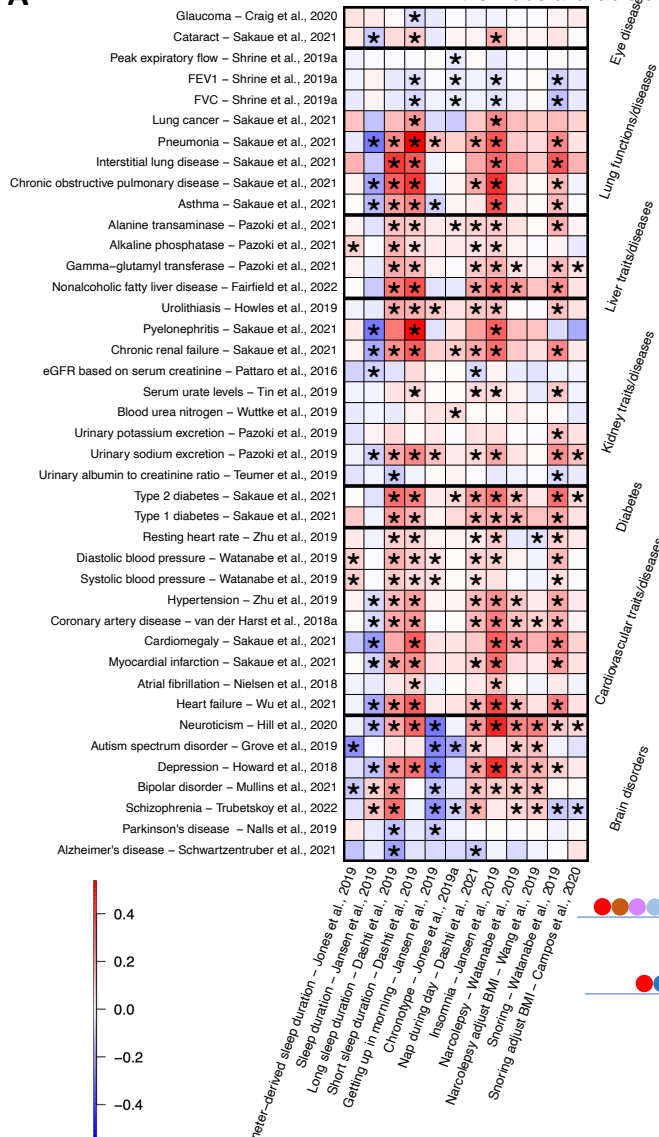
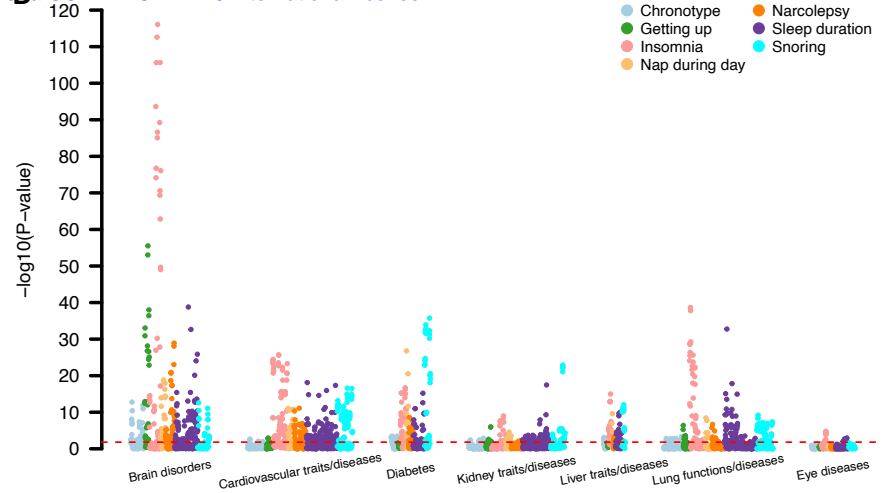


Figure 5

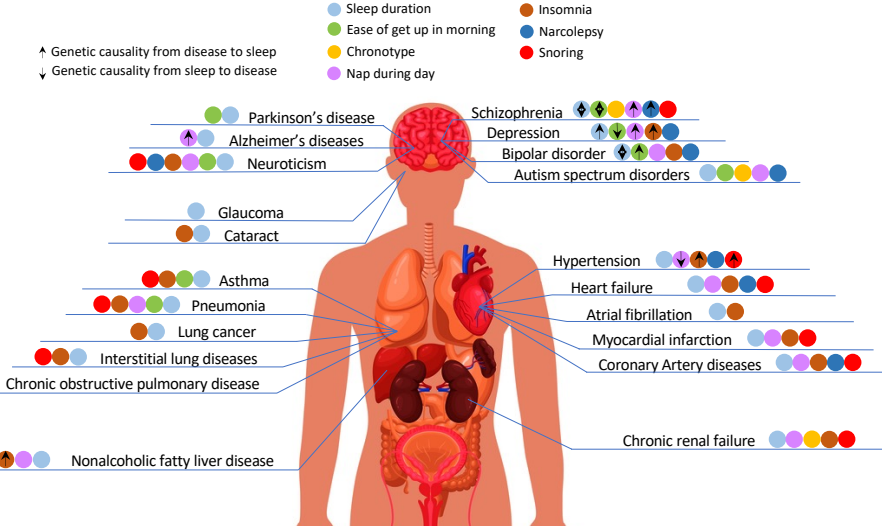
A



B



C



D

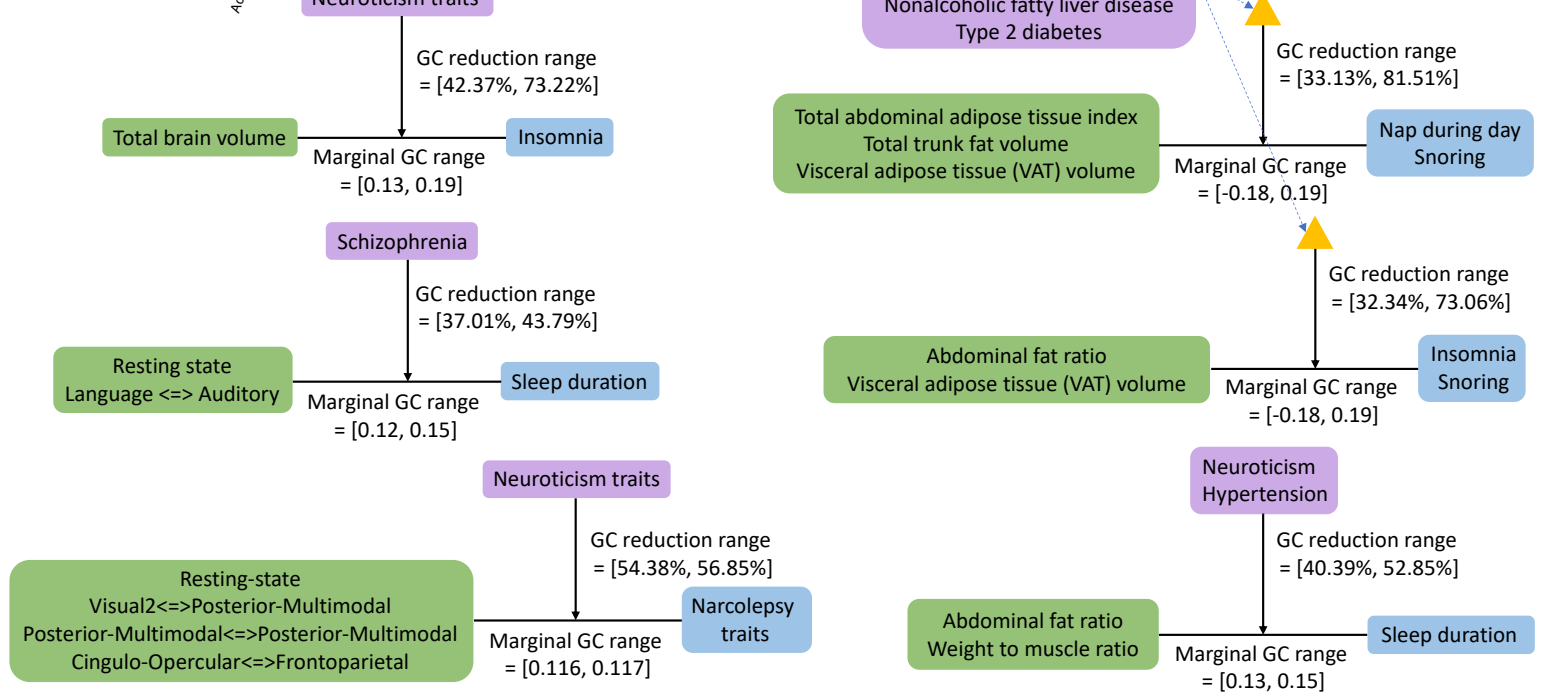


Figure 6