

1 **Unraveling varying spatiotemporal patterns of dengue and associated**
2 **exposure-response relationships with environmental variables in Southeast**
3 **Asian countries before and during COVID-19**

4

5 **Wei Luo**^{a, b, 1, *}, **Zhihao Liu**^{c, 1}, **Yiding Ran**^a, **Mengqi Li**^d, **Yuxuan Zhou**^e, **Weitao**
6 **Hou**^f, **Shengjie Lai**^g, **Sabrina L Li**^h, **Ling Yin**ⁱ

7

8 ^a *GeoSpatialX Lab, Department of Geography, National University of Singapore,*
9 *Singapore, Singapore*

10 ^b *Saw Swee Hock School of Public Health, National University of Singapore, Singapore,*
11 *Singapore*

12 ^c *School of Geosciences, Yangtze University, Wuhan, China*

13 ^d *Department of Geography, University of Zurich, Zurich, Switzerland*

14 ^e *Department of Architecture and Civil Engineering, City University of Hong Kong, Hong*
15 *Kong Special Administrative Region, China*

16 ^f *School of Design and the Built Environment, Curtin University, Perth, Australia*

17 ^g *WorldPop, School of Geography and Environmental Science, University of*
18 *Southampton, Southampton, United Kingdom*

19 ^h *School of Geography, University of Nottingham, Nottingham, United Kingdom*

20 ⁱ *Shenzhen Institute of Advanced Technology, Chinese Academy of Sciences, Shenzhen,*
21 *China*

22

23 * Corresponding author. GeoSpatialX Lab, Department of Geography, National University
24 of Singapore, Singapore, Singapore.

25 E-mail addresses: geowl@nus.edu.sg (Wei Luo)

26 ¹ these authors contributed equally.

27

28

29

30

31

32 **Abstract**

33

34 The enforcement of COVID-19 interventions by diverse governmental bodies, coupled
35 with the indirect impact of COVID-19 on short-term environmental changes (e.g. plant
36 shutdowns lead to lower greenhouse gas emissions), influences the dengue vector. This
37 provides a unique opportunity to investigate the impact of COVID-19 on dengue
38 transmission and generate insights to guide more targeted prevention measures. We aim to
39 compare dengue transmission patterns and the exposure-response relationship of
40 environmental variables and dengue incidence in the pre- and during-COVID-19 to
41 identify variations and assess the impact of COVID-19 on dengue transmission. We
42 initially visualized the overall trend of dengue transmission from 2012-2022, then
43 conducted two quantitative analyses to compare dengue transmission pre-COVID-19
44 (2017-2019) and during-COVID-19 (2020-2022). These analyses included time series
45 analysis to assess dengue seasonality, and a Distributed Lag Non-linear Model (DLNM)
46 to quantify the exposure-response relationship between environmental variables and
47 dengue incidence. We observed that all subregions in Thailand exhibited remarkable
48 synchrony with a similar annual trend except 2021. Cyclic and seasonal patterns of dengue
49 remained consistent pre- and during-COVID-19. Monthly dengue incidence in three
50 countries varied significantly. Singapore witnessed a notable surge during-COVID-19,
51 particularly from May to August, with cases multiplying several times compared to pre-
52 COVID-19, while seasonality of Malaysia weakened. Exposure-response relationships of
53 dengue and environmental variables show varying degrees of change, notably in Northern
54 Thailand, where the peak relative risk for the maximum temperature-dengue relationship
55 rose from about 3 to 17, and the max RR of overall cumulative association 0-3 months of

56 relative humidity increased from around 5 to 55. Our study is the first to compare dengue
57 transmission patterns and their relationship with environmental variables before and
58 during COVID-19, showing that COVID-19 has affected dengue transmission at both the
59 national and regional level, and has altered the exposure-response relationship between
60 dengue and the environment.

61

62 **Author Summary**

63

64 Dengue fever is a typical tropical disease transmitted via mosquito bites. COVID-19
65 lockdowns have altered human-mosquito contact patterns that impacted dengue
66 transmission. Additionally, lockdowns caused short-term environmental changes that
67 affected dengue vector breeding. In fact, during the COVID-19 period, the normal
68 prevention and treatment of dengue in many dengue-endemic countries was negatively
69 affected due to the sweep of COVID-19, such as strained allocation of medical resources
70 and misreporting of cases. Therefore, this offers a unique chance to study the impact of
71 COVID-19 on dengue transmission, guiding targeted and reasonable prevention measures.
72 We used a series of analytical approaches including time series analysis, space-time scan
73 statistics, and distributed lag non-linear model to compare the differences in dengue
74 transmission patterns and its exposure-response relationships with four environmental
75 variables (average monthly precipitation, average monthly relative humidity, monthly
76 maximum temperature, and monthly minimum temperature) before and during COVID-
77 19 in three Southeast Asian countries: Malaysia, Singapore and Thailand at the province
78 scale. We found that the dengue transmission pattern and its relationship with the
79 environmental variables changed differently. For instance, seasonality and infections

80 heightened in Singapore during COVID-19 and peak relative risk between max
81 temperature and dengue has rose significantly in Northern Thailand.

82

83 **Keywords:** Dengue; COVID-19; Time-series analysis; DLNM; Exposure-Response
84 Relationship; Southeast Asia(SEA)

85

86 **1. Introduction**

87

88 Dengue, which is caused by four serotypes of the virus (DENV 1-4) and transmitted by
89 mosquitoes, produces flu-like symptoms such as fever and headache (World Health
90 Organization, 2014). The ecology of dengue is shaped by environmental factors that
91 impact the dynamics of vectors, the development of the agent, and interactions between
92 mosquitoes and humans (Morin et al., 2013). It has become a growing threat due to the
93 increasing number of reported cases and deaths worldwide. The World Health
94 Organization (WHO) reports that cases rose from 505,430 in 2000 to 5.2 million in 2019,
95 and deaths more than quadrupled from 960 in 2000 to 4,032 in 2015 (World Health
96 Organization, 2014), significantly burdening public health and socio-economic
97 development in many countries (Srisawat et al., 2022). The onset of the COVID-19
98 pandemic in 2020 brought about significant societal disruptions and complicated the
99 transmission of dengue (Chen et al., 2022; Wilder-Smith, 2021). To curb the spread of the
100 virus, countries introduced diverse public health measures such as quarantine, isolation,
101 social distancing, and mask-wearing (Lai et al., 2020; Yin et al., 2021) . These
102 interventions, coupled with the public's fear of contracting COVID-19, prompted many
103 individuals to remain indoors, thereby altering human mobility and contact patterns
104 (Xiong et al., 2020; Zhu et al., 2022). Since close proximity contact among human-

105 mosquito contact is a vital factor in dengue transmission (Castro et al., 2021; Salje et al.,
106 2021; Wesolowski et al., 2015; Zhu et al., 2019), but it is decreased in 2020 due to the
107 COVID-19-related interventions, such as in Americas and SEA (Chen et al., 2022; World
108 Health Organization, 2014). However, many scholars believe otherwise that the pandemic
109 actually deteriorated dengue transmission as it strained healthcare systems and limited
110 resources for dengue prevention and vector control (Chen et al., 2022; Olive et al., 2020;
111 Reegan et al., 2020). The declining trend shown by the data is merely the result of under-
112 reporting of dengue cases during the pandemic (Olive et al., 2020).

113

114 SEA is an endemic region for dengue (Colón-González et al., 2023; Ooi and Gubler, 2009;
115 van Panhuis et al., 2015) approximately with 2.9 million dengue episodes and 5,906
116 dengue-related deaths occurring annually. The region suffers from an economic burden of
117 roughly \$950 million from dengue (Shepard et al., 2013). During the COVID-19 pandemic,
118 the number of dengue cases in the region decreased, but some countries like Singapore
119 experienced an increase in cases (Chen et al., 2022; Huang et al., 2022). These inconsistent
120 patterns at the regional and national levels indicate a complex situation that requires
121 further investigation.

122

123 Researchers are paying attention to the complex impact of COVID-19 and related
124 interventions on dengue transmission in SEA to which both COVID-19 and dengue pose
125 a heavy burden. Ong and Mohd (Ong et al., 2021) utilized a Seasonal Autoregressive
126 Integrated Moving Average (SARIMA) model to investigate the implications of lockdown
127 on dengue transmission in Malaysia. They discovered a possible diffusive effect of dengue
128 vector, which accelerated the increase in dengue incidences. Additionally, Chen et al.

129 (Chen et al., 2022) quantified the effects of COVID-19-related disruptions on dengue
130 transmission in SEA and Latin America, revealing a strong relationship between
131 interventions and reduced dengue risk. Furthermore, the COVID-19 interventions has
132 indirectly led to short-term environmental change (Yip et al., 2022). Thus, the relationship
133 between dengue incidence and environmental variables are susceptible to indirect effects
134 of COVID-19. The exposure-response relationship between environmental variables and
135 the dengue incidence has received widespread attention (Aswi et al., 2018). Zhiwei Xu et
136 al. (Xu et al., 2019) conducted a zonal investigation into the lagged effects of mean
137 temperature and relative humidity on dengue incidence in Thailand by using DLNM from
138 1999 to 2014, revealing significant relationship between the two factors but noteworthy
139 spatial differences.

140

141 Due to the recent emergence of the pandemic, a decrease in government attention to
142 dengue or instances of misjudgment and under-reporting may result in limited availability
143 of accurate dengue cases data(Lam et al., 2020; Yan et al., 2020). Many of the existing
144 studies only focus on one country or province (Li et al., 2021; Lim et al., 2020; Liyanage
145 et al., 2021; Ong et al., 2021; Saita et al., 2022). Although a few studies have attempted to
146 approach the question at a regional level, but they overlooked the analysis at a finer spatial
147 scale (e.g. first-level administrative), as observed in Chen et al. (Chen et al., 2022). This
148 limitation neglects potential regional synchrony and spatial heterogeneity, overestimates
149 the significance of observations, and impedes the generation of insights that can be applied
150 to a large area with a finer spatial scale. Furthermore, the majority of current studies
151 concentrate solely on dengue incidences during the pandemic as a means of comparison
152 to investigate the impact of COVID-19 (Huang et al., 2022; Surendran et al., 2022).

153 However, dengue incidences can be cyclical (Saita et al., 2022) so restricting the study
154 period solely to the pandemic duration has the potential to introduce bias into the results.
155 As highlighted by Chen et al. (Chen et al., 2022), 2019 experienced the most significant
156 global outbreak of dengue in history, which can complicate the observation and attribution
157 of the effects of COVID-19 disruption. Dengue transmission varies annually due to both
158 seasonal and cyclic patterns. Given the impact of the pandemic on dengue transmission
159 during the past three years, it is imperative to consider all three years comprehensively.
160 However, most existing studies have focused solely on either 2020 or 2021 without taking
161 a holistic approach. In addition, existing research predominantly employs quantitative
162 analysis methods to investigate the influence of environmental variables on dengue, yet
163 overlooks the indirect impacts of COVID-19 lockdown measures on short-term
164 environmental change may result in shifts in the relationship between environmental
165 variables and dengue during the pandemic (Bonnin et al., 2022; Cheng et al., 2021; Chien
166 and Yu, 2014; Chuang et al., 2017; Gui et al., 2021; Sarma et al., 2022; Wang et al., 2022;
167 Xu et al., 2019; Yip et al., 2022).

168

169 Therefore, to gain a complete understanding of the impact of the pandemic on dengue
170 transmission, this study aims to address knowledge gaps regarding the impact of COVID-
171 19 and related disruptions on dengue fever transmission and the exposure-response
172 relationship between environmental variables and dengue cases in SEA, with a specific
173 focus on Thailand, Malaysia, and Singapore. To achieve this, we categorized dengue cases
174 and related environmental data into pre-COVID-19 (January 2017 to December 2019) and
175 during-COVID-19 (January 2020 to December 2022). By doing so, we gained a
176 comprehensive comparison and understanding of the two periods of the spatio-temporal

177 distribution of dengue cases in the region and explored the pandemic's role in its spatial
178 variations using time-series analysis. DLNM was then used to analyze the different
179 relationship of environmental variables with dengue incidences in the two periods taking
180 the impact of lockdown measures on human mobility into consideration. Data from 2012-
181 2017 was also used to visualize and analyze overall trends in dengue cases.

182

183 Our study provides new insights into how dengue outbreaks have evolved in these three
184 SEA countries over one decade from 2012 to 2022 and the impact of COVID-19 on dengue
185 to generate a deeper understanding of dengue infection. By informing policies that
186 improve the efficiency of preventing and monitoring dengue cases in the during-COVID
187 recovery era, we hope to contribute to the fight against this disease.

188

189 **2. Methods**

190

191 **2.1. Data**

192

193 Our study focuses on the dengue situation in SEA. Despite countries' efforts to monitor
194 dengue cases, not all data is readily available for public access. Due to limited data
195 availability, we collected dengue surveillance data and environmental data for three
196 countries at the provincial level from 2012 to 2022, including Singapore, Malaysia, and
197 Thailand, out of 11 SEA countries. With the exception of Singapore, which only provides
198 data at the country level, provinces represent the first administrative tier. As Singapore's
199 population and land areas are similar to some provinces in other countries, Singapore's
200 country- level data can be compared with Malaysia's and Thailand's province-level data

201 (Singapore department of statistics, 2023; The official portal of sarawak government,
202 2023).

203

204 Dengue data for Malaysia were provided by the Malaysia Ministry of Health (2010 - 2022).

205 Dengue data for Thailand were provided by the Thailand Bureau of Epidemiology (2003

206 - 2022) and the data for Singapore were provided by the Singapore Ministry of Health

207 (2012 - 2022). For both Thailand and Singapore, weekly dengue data is available whereas

208 for Malaysia, only monthly data is provided. For standardization, dengue data for both

209 Thailand and Singapore are aggregated to obtain monthly data. In addition, it is

210 noteworthy that data spanning from August 2015 to May 2016 in Malaysia were absent in

211 the dataset. To address this gap, we supplemented the dataset utilizing data from a previous

212 study conducted by Chen Y et al (Chen et al., 2022). Moreover, employing Google Earth

213 Engine, we gathered environmental variables in the study region spanning from 2017 to

214 2022. We selected four environmental variables that have been confirmed to be associated

215 with dengue transmission (Morin et al., 2013; Naish et al., 2014; Xu et al., 2016), including

216 average monthly precipitation, average monthly relative humidity, monthly maximum

217 temperature, and monthly minimum temperature. We also collected Non-Pharmaceutical

218 Interventions (NPI) data (Oxford COVID-19 Government Response Tracker (OxCGRT)

219 project's overall stringency index) from 2020 to 2022 that serves as a fixed variable in

220 environmental-related analyses, facilitating the simulation of more authentic human

221 mobility patterns during the COVID-19 period. This index, derived from various

222 restrictions related to public health and social measures, and the value ranges from 0 to

223 100, with higher values representing stronger lockdown measures.(Hale et al., 2021)

224

225 2.2. Time Series Analysis

226

227 We perform temporal variation analysis on the dengue fever data. For each country, the
228 line graph and heatmap are used for better visualization of an overall trend during the
229 study period, and box plots are used for more precise visualization of variations in yearly
230 trends and seasonality. Due to the high seasonality nature of dengue fever (Hartley et al.,
231 2002), we apply seasonal and trend decomposition using loess (STL) to decompose the
232 time series of each country. STL separates time series data into three components: trend
233 (representing long-term and low-frequency variations), seasonal (capturing variations
234 within the same period), and random or remainder (accounting for residual variations after
235 extracting the trend and seasonal components) (Cleveland et al., 1990). Its advantages lie
236 in its simplicity, robustness of results, and effectiveness in data visualization. The equation
237 can be described as follows.

238

239

$$y_t = T_t + S_t + R_t \#(1)$$

240

241 In this context, y_t represents the response variable (i.e., case counts) at time t , while T_t ,
242 S_t , and R_t correspond to the trend, seasonal, and remainder components at the same time
243 point. In addition, we also conducted retrospective space-time scan statistics to delineate
244 the spatiotemporal patterns of dengue transmission before and during the COVID-19 (see
245 supplementary appendix for more details).

246

247 2.3. Exposure-response relationship between environmental variables and dengue fever 248 incidence

249

250 DLNM offers robust methodologies for exploring the exposure-response relationship
251 between variables from distinct domains. Particularly within the realm of environmental
252 variables, its reliability surpasses that of traditional time series analyses (Gasparrini, 2011;
253 Gasparrini et al., 2017). DLNM proves to be an invaluable tool for investigating the lagged
254 relationship of dengue fever incidence with environmental variables (Cheng et al., 2021;
255 Chien and Yu, 2014; Chuang et al., 2017; Gui et al., 2021; Sarma et al., 2022; Wang et
256 al., 2022; Xu et al., 2019; Yip et al., 2022). Leveraging the 'dlnm' package in R Studio, we
257 conducted comprehensive analyses to compare exposure-response relationship between
258 environmental variables and dengue fever incidence both pre-COVID and during-COVID
259 periods. This approach aims to contribute to a deeper understanding of the impact of
260 environmental variables on the dengue fever incidence.

261

262 In this study, the analysis is divided into two distinct phases. Throughout these phases, we
263 employed four key environmental variables (average monthly precipitation, average
264 monthly relative humidity, monthly maximum temperature, and monthly minimum
265 temperature) to illustrate and elucidate the processes under investigation. In the first phase,
266 individual models were constructed for each subregions, aiming to explore the relationship
267 between environmental variables and dengue incidences. A cross-basis was employed for
268 this purpose, utilizing a B-spline with two degrees of freedom (dfs) for the environmental
269 variable space. The specific spline related to environmental variables was positioned at
270 the point representing the lowest risk of dengue. Given the diminished human mobility
271 due to COVID-19 lockdowns, our analysis of the environment-dengue exposure-response
272 relationship incorporates the OxCGRT project's overall stringency index as a fixed
273 variable. To accommodate seasonal variations and long-term trends within the model, both

274 month and year were integrated as dummy variables. Moving on to the second phase, a
275 multivariate meta-analysis approach was embraced to synthesize the relationship between
276 environmental variables and dengue incidence across diverse areas. This process involved
277 identifying specific associations, considering various lag times for the regions studied.
278 The initial phase of analysis was governed by the following mathematical model:

279

$$280 \quad Y_t \sim \text{Poisson}(\mu_t) \#(2)$$

281

$$282 \quad \text{Log}(\mu_t) = \alpha + \beta T_{t,1} + \eta_1 \text{Month} + \eta_2 \text{Year} \#(3)$$

283

284 In the provided equation, where t represents the month, Y_t signifies the number of dengue
285 cases in a given month, α denotes the model intercept, and β is the vector of coefficients
286 for $T_{t,1}$ and the lag month. $T_{t,1}$ represents the matrix derived through DLNM for each
287 type of environmental factor.

288

289 For analyzing the exposure-response relationship between dengue incidence and
290 environmental variables, given the substantial geographical expanse of Thailand and the
291 comparatively smaller size of Singapore, we partitioned Thailand into six distinct study
292 areas based on classification out of meteorological purposes by the Thai Meteorological
293 Department (Thai Meteorological Department, 2023), while Malaysia and Singapore
294 constituted a singular study area. The delineation of these study areas is visually depicted
295 in Fig. S1.

296

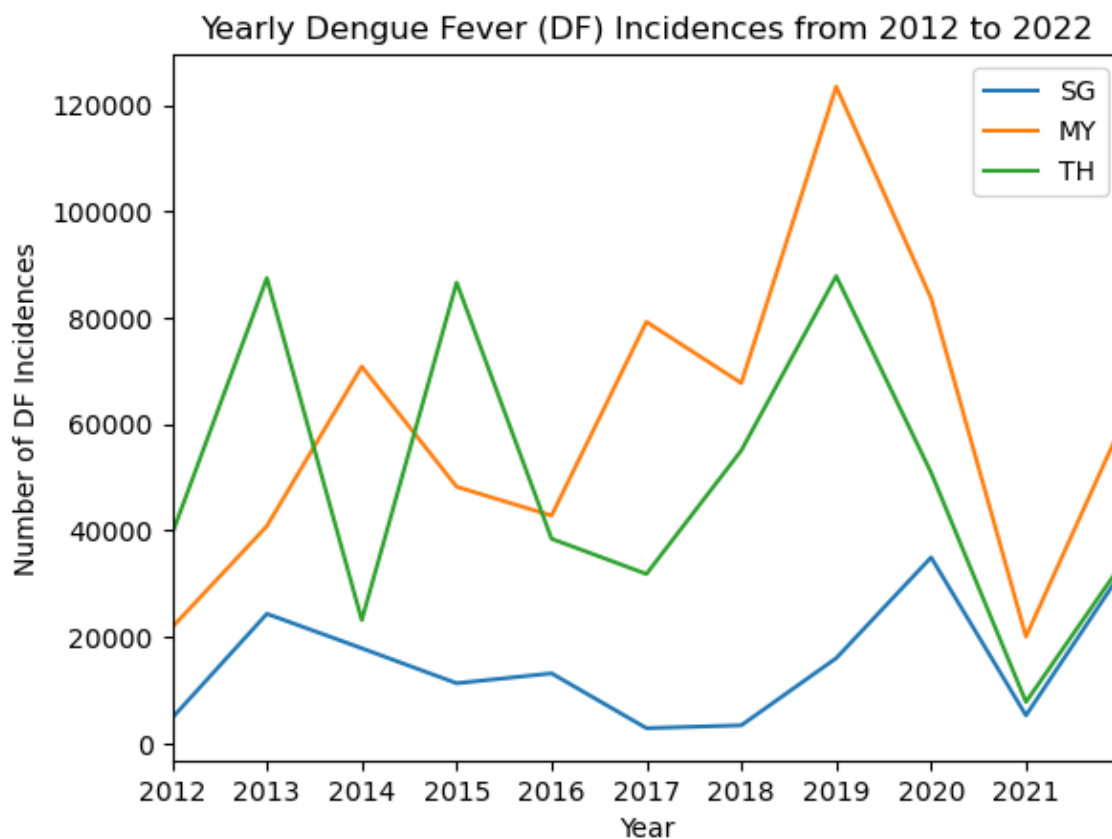
297 **3. Results**

298

299 **3.1. Overall Trends**

300

301 We found strong cyclic patterns in dengue fever incidences across all three countries in
302 the past decade. Fig. 1 depict the annual trends of dengue cases at the national level from
303 2012 to 2022. Showing that a year with severe dengue situation was often followed by 1-
304 2 years of relatively fewer cases, indicated by the appearance of spikes every 2-3 years.
305 For Singapore, the low peaks occurred in 2015, 2017, and 2021 with high peaks observed
306 in 2013, 2016, 2020 and 2022. For Malaysia, low peaks took place in 2016, 2018, and
307 2021 with high peaks in 2014, 2017, and 2019. For Thailand, low peaks were observed in
308 2014, 2017, and 2021 with high peaks in 2013, 2015, and 2019. Except when dengue cases
309 all dipped in 2021 for the three countries due to COVID-19 related interventions, the cyclic
310 patterns rarely overlapped, highlighting unique temporal patterns within each country.



311

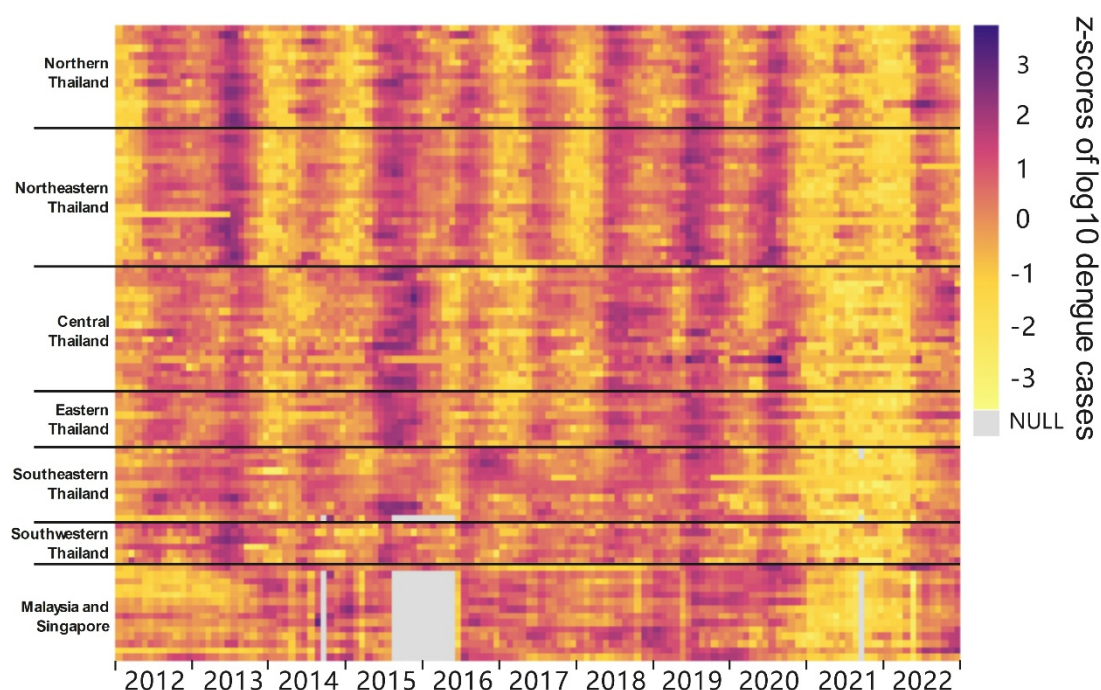
312

Fig. 1. Annual dengue trend in three countries

313

314 From a subregional perspective (Fig. 2), all subregions in Thailand exhibited remarkable
315 region-wide synchrony with a similar annual trend except 2021 due to impact from
316 COVID-10-related lockdowns. Furthermore, the pattern of dengue transmission exhibits
317 interannual seasonality. Upon closer observation, the peak incidence of dengue in
318 Northern and Northeastern Thailand occurs earlier and concludes sooner each year
319 compared to other subregions of the country. In relative terms, Malaysia and Singapore
320 have not exhibited pronounced similar trends; however, the variation trend between 2017
321 and 2022 similar to Thailand.

322



323

324

Fig. 2. Monthly dengue trend in all subregions.

325

326 3.2. Time Series Analysis for Seasonal Variations

327

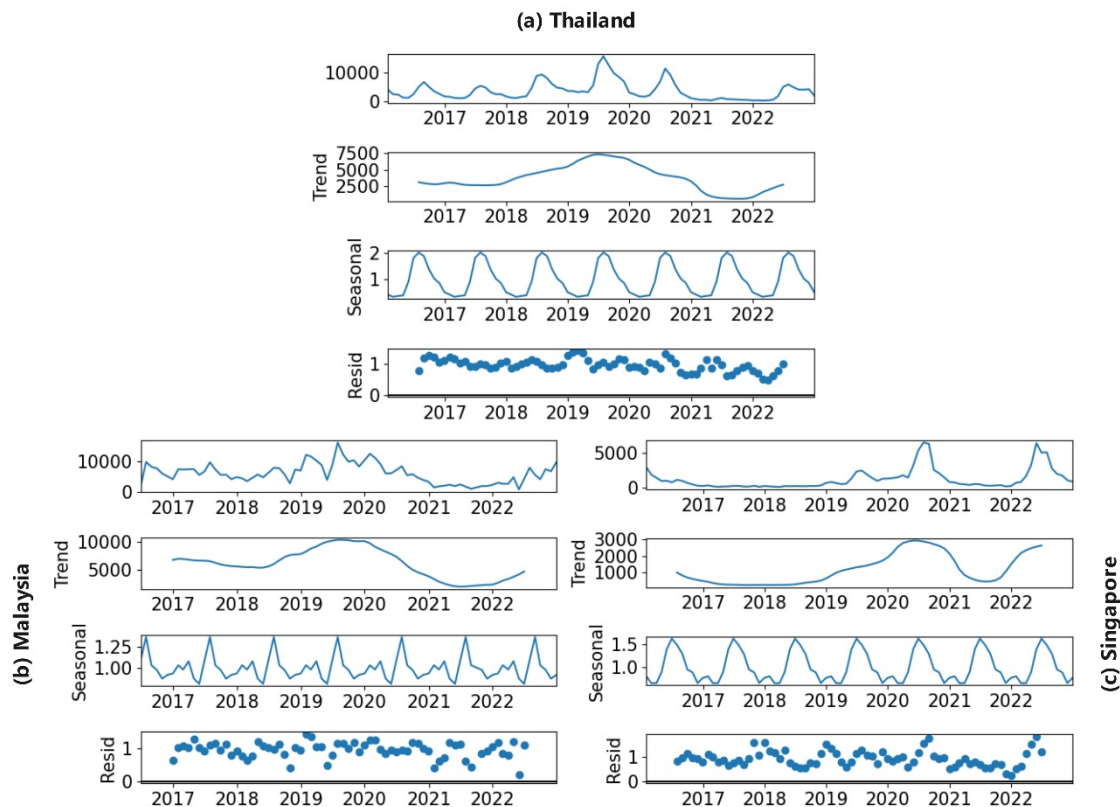
328 With STL, we decompose the dengue incidences into yearly trends, seasonal variations,
329 and residue shown in Fig. 3. The cyclic patterns observed in the trend components coincide
330 with those shown in Fig.2 whereas the seasonal components highlight the seasonality of
331 dengue cases, which often rise during the hot and rainy seasons of a year (Colón-González
332 et al., 2013).

333

334 To better capture seasonality and compare the impact of COVID-19, we use box plots to
335 depict variations in each month's dengue cases, shown in Fig. 4. Interesting patterns
336 emerge across the three countries by comparing the seasonality plots before (2017-2019,
337 shown by the left column) and during (2020-2022, shown by the right column) COVID-
338 19. For Singapore, dengue cases usually spiked sharply between May and August, which
339 is consistent before and during the pandemic. However, the seasonality impact intensified
340 with the presence of COVID-19: average monthly cases in the middle of a year increased
341 from around 1,250 to 5,000. A high-risk cluster (RR=13.81) was also detected from April
342 2022 to October 2022 in Singapore (Fig. S7 & Table. S2). For Malaysia, a general
343 reduction in dengue cases throughout the year can be witnessed, coupled with heightened
344 variability between same months during the COVID-19 period. Meanwhile, the low-risk
345 cluster in Western Malaysia expanded and witnessed a reduction in RR (from 0.34 to 0.10)
346 (Fig. S7 & Table. S1-S2). For Thailand, average monthly cases during dengue season, i.e.,
347 the middle of a year, showed slight decrease. A low-risk cluster (RR=0.08) was identified
348 in Southern Thailand accordingly, while a high-risk cluster (RR=71.07) emerged in Mae
349 Hong Son during dengue season (Fig. S7 & Table. S2). This was probably due to Mae
350 Hong Son implemented sheltered sanitation practices and experienced the maximum

351 temperature and miserable humidity levels, promoting the mosquito breeding (Saita et al.,
352 2022).

353



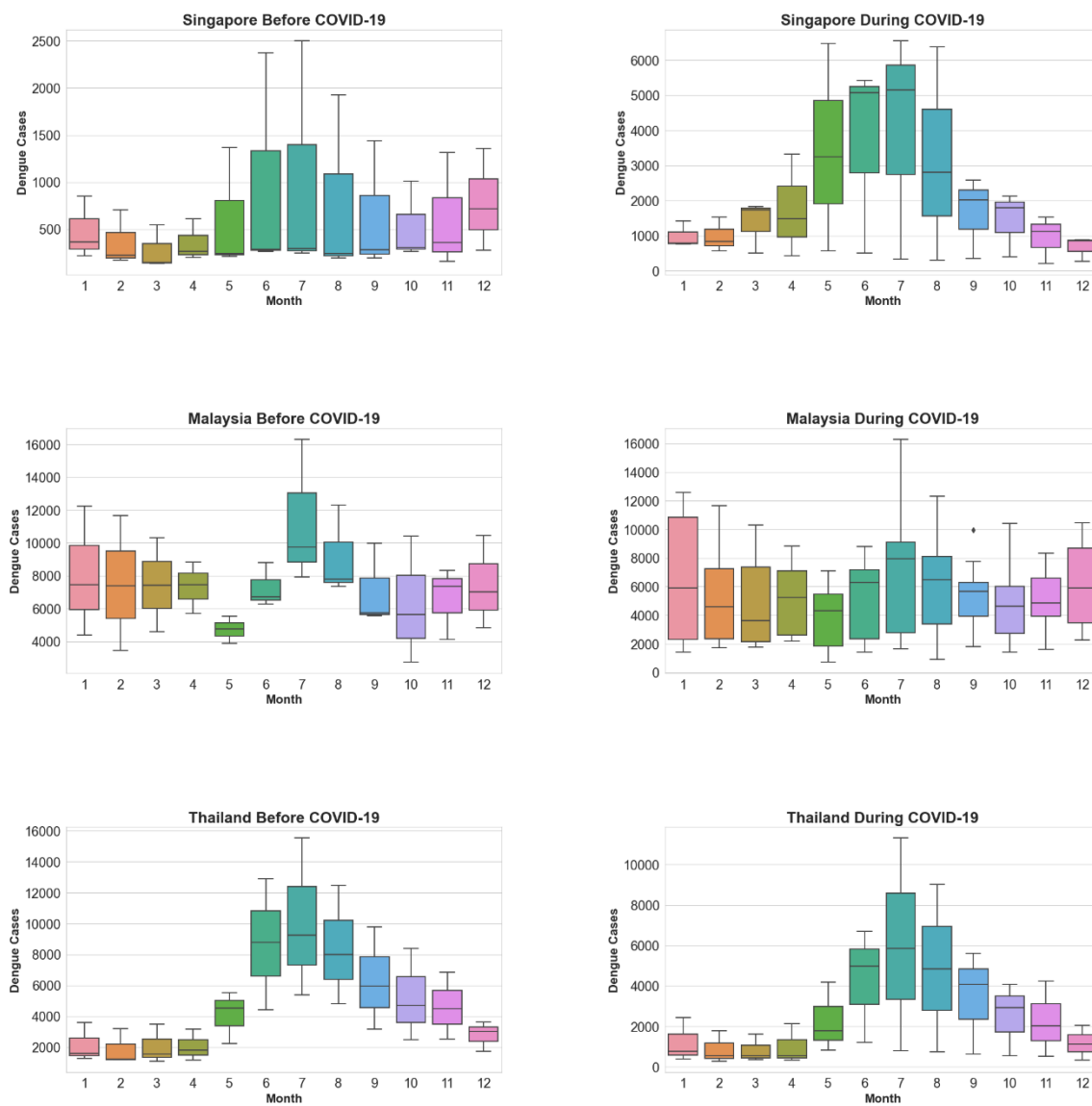
354

355

356

357

Fig. 3. Seasonal Patterns of Dengue Fever Incidences



358

359 **Fig. 4.** Box Plots of Seasonal Patterns of Dengue Fever Incidences Before and After
360 COVID-19

361

362 3.3. Exposure-response relationship between environmental variables and dengue fever
363 incidence in pre-COVID-19 and during-COVID-19

364

365 We employ DLNM to unveil the exposure-response relationship between various
366 environmental variables and dengue fever, both pre-COVID-19 and during-COVID-19,
367 across different study areas. Meanwhile, the overall cumulative association with a lag of

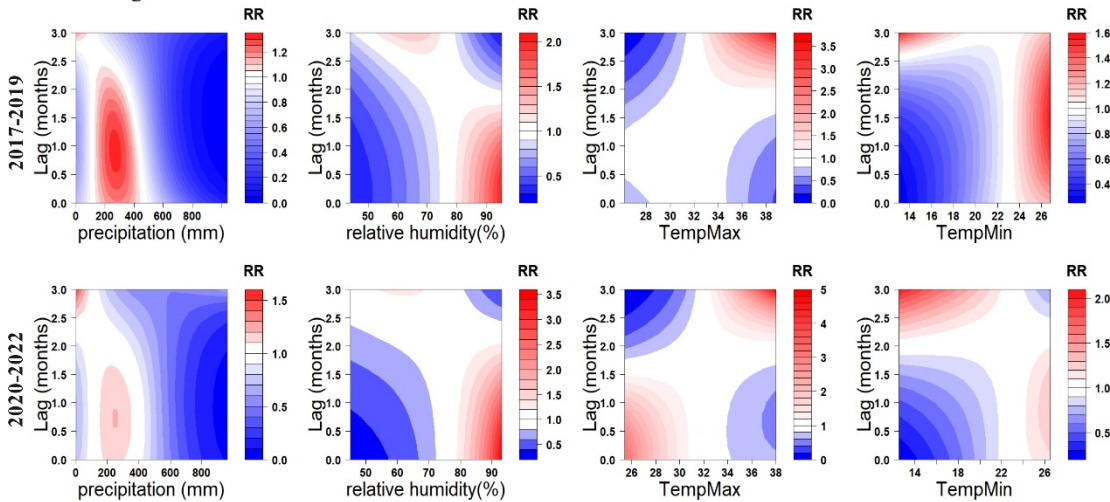
368 0-3 months was explored between environmental variables and dengue fever cases in the
369 same contexts.

370

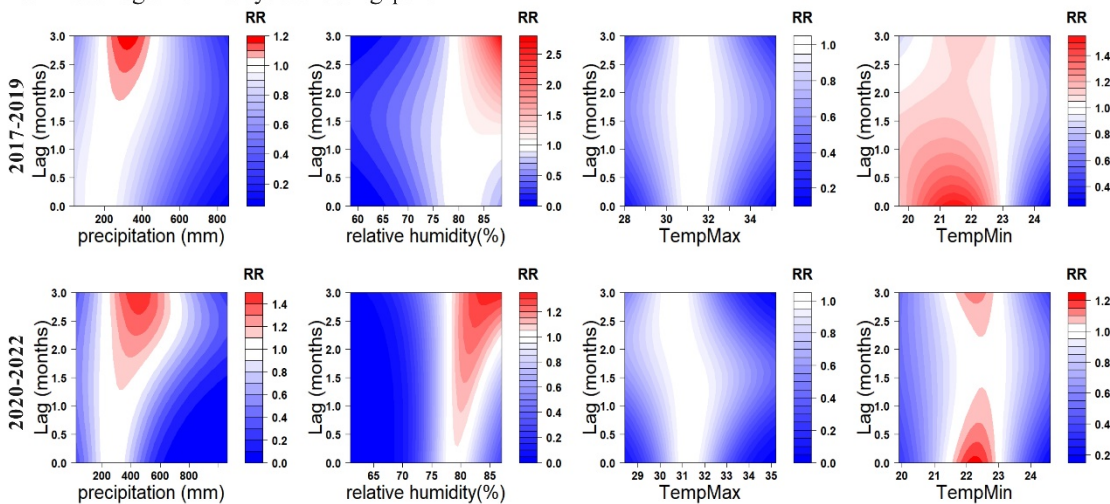
371 In a comprehensive overview, the overall exposure-response relationship between dengue
372 cases and environmental variables in total region of Thailand, as well as Malaysia and
373 Singapore exhibited different changes (Fig. 5). For Thailand, during the pandemic, the 0-
374 1.5 months following the attainment of maximum temperatures between 25°C-30°C
375 emerge as new occurrences of high-risk periods. In contrast, before pandemic, the RR
376 within this maximum temperature range was exceedingly low. For Malaysia and
377 Singapore in pre-COVID-19, the high RR interval for relative humidity was 1.5-3 months
378 after reaching 80%-90%, with the peak value at 2.7. There was a significant shift in this
379 pattern during pandemic, with the high RR lag interval occurring approximately 0.4-3
380 months after relative humidity reached 80%-90%. This suggests a rapid increase in RR
381 when relative humidity reaches this interval, with an earlier and sustained lag period and
382 a significantly heightened sensitivity. However, the highest value of RR significantly
383 decreased, dropping from 2.7 to 1.4. For minimum temperature, the high RR interval was
384 relatively broad before pandemic, occurring 0-3 months after the temperature reached
385 around 20°C-23°C. It is noteworthy that this lagged relationship differs from the majority,
386 as the RR sharply increases when the minimum temperature enters this interval, gradually
387 decreasing over time, contrary to the typical pattern where RR tends to gradually rise with
388 increasing lag duration. During COVID-19, the high-risk range has narrowed significantly
389 and the RR has also decreased. Moreover, the overall cumulative association between
390 environmental variables and RR in Thailand exhibited substantial changes with a lag of 0-
391 3 months. Specifically, the peak of the overall cumulative association for precipitation and

392 dengue cases decreased by approximately 0.3. The association between relative humidity
393 and dengue cases underwent a significant transformation. Pre-pandemic, the curve
394 exhibited a slightly inverted U-shape, peaking at around 80%, with a value of
395 approximately 1.0. However, during the COVID -19, the associations between relative
396 humidity and RR became proportional, steadily increasing above around 80%, instead of
397 decreasing. The maximum temperature curve has transitioned from an inverted U-shape
398 to a positive correlation as temperatures reach their peak. For minimum temperature, in
399 comparison to the pre-pandemic period, a conspicuous decrease in RR has been observed
400 when the minimum temperature exceeds 23 °C. For Malaysia and Singapore, the
401 characteristics of the association between dengue and precipitation, relative humidity,
402 exhibit interestingly reverse patterns in the perspectives of two periods compared with
403 Thailand. While the association with the maximum temperature exhibits marginal changes,
404 the RR of the association between dengue and the minimum temperature, specifically
405 within the range of 20°C-22°C, shows a relatively distinct decrease.

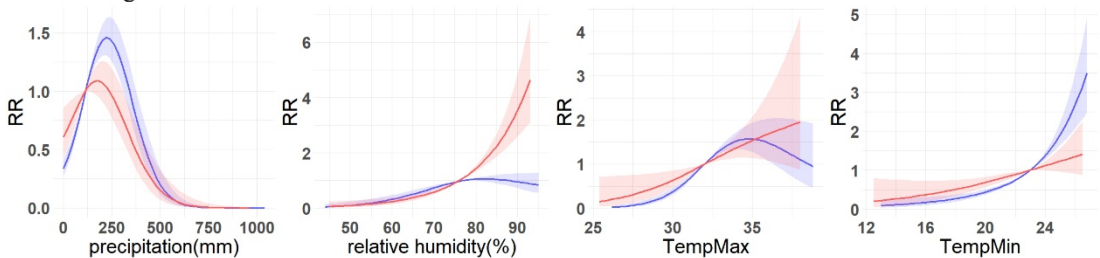
a1 Total region of Thailand



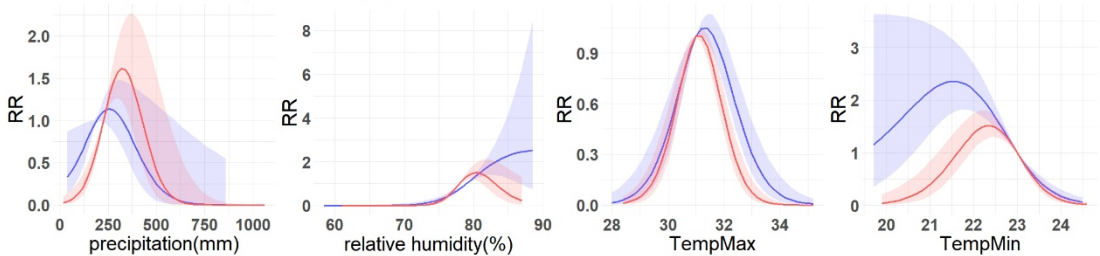
b1 Total region of Malaysia and Singapore



a2 Total region of Thailand



b2 Total region of Malaysia and Singapore



407 **Fig. 5.** Exposure-response relationship between dengue incidences and environmental
408 variables in total region of research area. For a1 and b1, contour plots showcase the
409 relationship between four environmental variables and dengue RR in Thailand, Malaysia,
410 and Singapore respectively. a2 and b2 illustrate the overall cumulative associations (0-3
411 months) between the four environmental variables and dengue RR in Thailand, Malaysia
412 and Singapore. The blue lines represent the pre-COVID-19 (2017-2019), while the red
413 lines represent the during-COVID-19 (2020-2022), with the corresponding 95%
414 confidence intervals indicated in similar colors.

415

416 At the subregional scale in Thailand, the environmental variables with the exposure-
417 response relationship to dengue fever that varied considerably before and during the
418 pandemic include precipitation, maximum temperature and minimum temperature in
419 Northern Thailand, relative humidity in Southeastern Thailand, minimum temperature in
420 Northeastern Thailand and Southeastern Thailand, and precipitation in Southwestern
421 Thailand.

422

423 By contrast, the exposure-response relationship of environmental variables with dengue
424 cases were most variable in Northern Thailand (Fig.6). Specifically, high RR cluster of
425 precipitation shows minimal variations in high RR areas. However, there is a significant
426 elevation in RR values, with the highest value increasing from 2.2 to 7.9. The maximum
427 temperature exhibited the most noticeable change among all environmental variables and
428 regions. Pre-pandemic, the high RR cluster was 0-1 month and 2.5-3 months after
429 temperatures between 27°C-32°C. However, during the pandemic, there was a significant
430 increase in RR within 0-1 month after this temperature range. Additionally, a new high

444 environmental variables and dengue RR. Line charts illustrate the overall cumulative
445 associations (0-3 months) between the four environmental variables and dengue RR. The
446 blue lines represent the pre-COVID-19 (2017-2019), while the red lines represent the
447 during-COVID-19 (2020-2022), with the corresponding 95% confidence intervals
448 indicated in similar colors.

449

450 Southeastern Thailand's relative humidity lagged impact pattern was intricate (Fig. S2).
451 The RR was generally low for relative humidity between 77%-85% during pre-pandemic,
452 whereas the RR significantly increased in the lag intervals of 0-0.3 and 2.5-3 months after
453 reaching this relative humidity range during the pandemic. In addition, 1.8-3 months after
454 the relative humidity range reached 55%-75% before the pandemic was a high RR zone,
455 and during the pandemic, the zone shrank significantly to 2.5-3 months after the relative
456 humidity range reached 60%-70%. Additionally, the previously identified high RR cluster,
457 2-3 months after relative humidity between 55%-75%, substantially narrowed down to
458 2.5-3 months after reaching 60%-70%. Notably, the lagged relationship between relative
459 humidity and the RR of dengue cases in Southeastern Thailand exhibited significant
460 variations, forming a marked contrast to the overall trend observed in Thailand.
461 Furthermore, Northeastern Thailand's minimum temperature high RR cluster completely
462 shifted its position, demonstrating a highly significant change (Fig. S3). Pre-pandemic,
463 the high RR interval was 0-2 months after the temperature reached 16°C-22°C, with the
464 peak RR occurring one month after the lag. However, during the pandemic, this interval
465 transitioned to a low-risk zone, and two new high RR zones emerged: 0-0.5 months and
466 2.5-3 months after the temperature reached 22°C-26°C. For the Eastern Thailand (Fig. S4),
467 there has been a discernible decline in the RR associated with the maximum temperature

468 in relation to dengue, the maximum value has decreased from approximately 3.5°C to
469 1.5°C. Over a cumulative lag of 0-3 months, the peak value for RR of association between
470 precipitation and dengue has risen from approximately 1.8 to 3.4, the precipitation remains
471 relatively constant at its peak. Additionally, the peak value for relative humidity has
472 decreased from about 3.4 to 1.1, accompanied by an approximate 2% increase in relative
473 humidity when the peak occurs. The exposure-response associations between dengue
474 incidences and environmental variables in Central Thailand and Southwestern Thailand
475 changed little before and during COVID-19 (Fig. S5-S6).

476

477 **4. Discussion**

478

479 **4.1. Principal Findings**

480

481 Our study aims to explore the spatio-temporal patterns and exposure-response relationship
482 between environmental variables and dengue fever for both pre-and during-COVID-19.
483 This will be achieved by analyzing the dengue incidence data of three Southeast Asian
484 countries - Thailand, Malaysia, and Singapore in the pre-COVID-19 and during-COVID-
485 19. To the best of our knowledge, this study is the first attempt to utilize province-level
486 data from multiple countries in SEA to generate regional-level insights into dengue fever
487 over the special time period. While previous studies have shown that the situation
488 regarding dengue fever improved during the pandemic at both regional and global levels
489 (Chen et al., 2022; World Health Organization, 2014), the impact can vary across countries.
490 Malaysia and Thailand saw a reduction in the burden of dengue fever during the pandemic,
491 while Singapore experienced unprecedentedly terrible dengue outbreaks in 2020 and 2022
492 (Ong et al., 2021).

493

494 In order to investigate the fluctuations in dengue incidence during the pandemic, we
495 employed time series analysis to examine the seasonality component of the monthly
496 dengue incidence data. We observed that both Singapore and Thailand maintained
497 pronounced seasonality in dengue cases pre-and during-COVID-19. And a notable
498 increase in dengue cases in Singapore during COVID-19, especially from May to August,
499 experiencing an approximately fourfold rise compared to the same period pre-COVID-19.
500 Possibly attributed to increased human-mosquito contact opportunities due to population
501 staying at home, a surge in blood supply (Ong et al., 2021). And the southwestern monsoon
502 (end of May to September) results in elevated temperatures, humidity, and precipitation
503 levels conducive to mosquito proliferation(World Health Organization, 2020). In contrast,
504 Malaysia exhibited a more evenly distributed number of dengue cases across months
505 during COVID-19, indicating a weakened seasonality compared to the before COVID-19.
506 And during COVID-19, both Thailand and Malaysia experienced a relatively significant
507 decline in the dengue cases. Possibly because Malaysia and Thailand potentially
508 implemented divergent lockdown measures during the same period, while the timing and
509 intensity of monsoons may have exhibited variations across the three countries.
510 Furthermore, distinctions in healthcare infrastructure and the differences of public health
511 interventions could contribute to disparate impacts on dengue incidence in Singapore,
512 Malaysia, and Thailand (Malaysia Health Ministry, 2024; Singapore Health Ministry,
513 2024; Thailand Health Ministry, 2024). Additionally, prior research has observed a slight
514 delay in Thailand's dengue seasonality (Saita et al., 2022) , but our study is the first to
515 focus on the effect of intensified seasonality. While false positive dengue test results in
516 COVID-19 patients have been reported (Lam et al., 2020; Yan et al., 2020), this alone

517 does not completely explain the observed seasonal variations. In 2020, the surge in dengue
518 cases coincided with Singapore's COVID-19 lockdown period from April to June.
519 However, in 2022, despite the easing of COVID-19 measures, dengue incidences still
520 surged in May. Moreover, as noted by Brady and Wilder-Smith (Brady and Wilder-Smith,
521 2021), lockdowns are only temporary changes in human mobility and are unlikely to have
522 a lasting impact on vector population or their behavior. Consequently, even in areas that
523 saw a decrease in dengue cases during lockdowns, it is possible that those infections were
524 only postponed rather than prevented. Thus, other factors such as environment,
525 socioeconomic status, and vector distribution should be examined over a more extended
526 study period to establish a causal relationship between stay-at-home orders and dengue
527 surges.

528

529 The differences in the lagged relationship between environmental variables and dengue
530 cases before and during the pandemic reveal a more complex set of influencing factors.
531 Previous research has indicated that an increase in temperature promotes the proliferation
532 of *Aedes aegypti* and *Aedes albopictus* mosquitoes, enhancing the severity of dengue
533 infections (Gui et al., 2021). Our study indicates that only the RR of dengue cases in
534 Northern Thailand showed a significant increase during the pandemic due to temperature
535 variable. According to our data, the average monthly maximum temperature in Northern
536 Thailand rose from 31.99 °C in 2017-2019 to 32.32°C in 2020-2022, marking an increase
537 of 0.33 °C. In contrast, the differences in the monthly average maximum temperature in
538 other parts of Thailand, as well as in Malaysia and Singapore, were extremely small, all
539 below 0.05, with the differences in Southeast and Southwest Thailand, Malaysia, and
540 Singapore even below 0.01. Therefore, the significantly soaring RR of the relationship

541 between maximum temperature and dengue in Northern Thailand may be attributed to the
542 fact that the increase in maximum temperature, promoting breeding of *Aedes aegypti* and
543 *Aedes albopictus* mosquitoes, and thus leads to an increase in dengue infection.
544 Additionally, concerning the exposure-response relationship between precipitation and the
545 RR of dengue, there was a significant increase in Northern Thailand during the pandemic.
546 The high RR zone in this region was 2.5-3 months after extreme high rainfall (500mm-
547 700mm) before the pandemic. However, during the pandemic, this rainfall range shifted
548 to around 350mm-400mm, with the lag time for high risk remaining roughly the same,
549 resulting in a significant increase in RR, peaking at 7.9. This finding aligns with the
550 observations by Cheng J et al. (Cheng et al., 2021) in Guangzhou, China, indicating a
551 significant increase in dengue risk 6-13 weeks after extreme high rainfall. This observation
552 is consistent with the perspective on vector, wherein mosquitoes exhibit heightened
553 breeding frequency during the rainy season (Ong et al., 2021). Apart from Northern
554 Thailand, variations in precipitation were observed in other study regions, but the changes
555 in RR were generally small. Therefore, the exposure-response relationship between
556 precipitation and dengue RR exhibits regional differences, necessitating further
557 investigation.

558

559 4.2. Implications and Recommendations

560

561 The COVID-19 pandemic has posed one of the most significant public health challenges.
562 Despite the low likelihood of a similar pandemic in the near future, the insights gained
563 from this unique situation regarding dengue transmission can contribute to our knowledge
564 gap and be applied in future dengue control studies (Chen et al., 2022).

565

566 First of all, we want to highlight the importance of vector control for dengue prevention.
567 Our study examines the impact of COVID-19 on dengue transmissions in SEA using
568 province-level dengue incidence data from 2017 to 2022, and reveals the country-specific
569 effects of pandemic-related measures on dengue outbreaks. Although measures such as
570 lockdowns can potentially reduce dengue transmission by limiting mobility and socio-
571 economic activities, it is also likely that residents staying at home increase the risk of
572 mosquito breeding in residential areas (Ong et al., 2021), as seen in Singapore. Therefore,
573 future dengue control efforts should prioritize vector control and the prevention of vector
574 breeding (Buhler et al., 2019; Sulistyawati et al., 2023).

575

576 Secondly, we urge relevant authorities to strategically allocate their healthcare resources
577 to ensure proper dengue management even during times of emergency. The allocation of
578 healthcare resources has been put to the test during this public health crisis. Many
579 countries struggled to cope with the sudden pressure on limited resources, resulting in
580 neglect of the dengue situation with discontinued vector control and inadequate dengue
581 testing (Aborode et al., 2022; Harapan et al., 2021; Sulistyawati et al., 2023). Relevant
582 authorities can proactively intervene based on the environmental conditions associated
583 with an elevated dengue infection rate. For instance, in areas experiencing increased
584 precipitation, implementing artificial rainfall reduction measures may be a strategic
585 intervention to reduce mosquito breeding rates (Zhou et al., 2023). Additionally, targeted
586 weed control measures could be employed to minimize breeding zones. Moreover,
587 distributing mosquito repellent and nets (Saita et al., 2022) to residents can help protect
588 them from mosquitoes even if vector control measures are not effective.

589

590 Thirdly, we urge SEA countries to strengthen their collaborative efforts in combatting
591 dengue due to dengue transmission mechanisms is complex and country-specific.
592 Localized clusters were prevalent during the pandemic. However, as the world enters the
593 post-COVID recovery era, which sees increasing mobility both within and across country
594 borders, cross-country clusters are increasing. This situation may be exacerbated by the
595 regional synchrony of dengue risk, highlighting the need for regional collaboration in
596 dengue control (Servais, 2009). The SEA countries should work together to prevent, detect,
597 and treat dengue, starting with sharing relevant data with each other (Luo et al., 2023,
598 2022). The detection of specific dengue serotypes in one country should be made known
599 to other countries as soon as possible so that they can adopt more targeted prevention and
600 detection measures to minimize the risk. Successful control of dengue vectors in one
601 country reduces the risk of cross-border transmission, benefiting the entire region.

602

603 Last but not least, this study confirms that during the periods of 2017-2019 (pre-COVID-
604 19) and 2020-2022 (during-COVID-19), the exposure-response relationships between
605 various environmental variables and dengue fever incidence underwent changes across
606 different study regions, exhibiting varying magnitudes. These changes may be attributed
607 to the impact of environmental alterations resulting from COVID-19-related lockdown
608 measures or other natural factors(Li et al., 2022; Liu et al., 2024), leading to variations in
609 dengue transmission sources (Bonnin et al., 2022; Cheng et al., 2021). Therefore, we
610 recommend that health-related departments in each country should pay attention to the
611 increase in dengue infections caused by changes of human mobility pattern or short-term
612 environmental changes. They should take early preventive measures to minimize
613 infections. However, the connection between environmental variables and dengue

614 infections is highly intricate, and the changes in dengue infections are often driven by the
615 combined influence of multiple environmental factors (Morin et al., 2013). Hence,
616 relevant departments or researchers should delve deeper into comprehensive studies to
617 better understand these complex relationships.

618

619 4.3. Limitations

620

621 Despite gaining valuable insights, our results have been limited by various obstacles
622 encountered during the studies on dengue transmission. A significant challenge has been
623 the limited availability of dengue incidence data. While many countries have a nationwide
624 surveillance system for dengue, not all of them make their incidence data publicly
625 available. This has significantly restricted the potential for data-driven studies. Even
626 among the countries that do make their data available, many only provide it at a coarse
627 spatial scale, such as the national level, which limits the possibility of uncovering finer
628 details. Therefore, this study was only able to analyze regional trends in SEA using data
629 from three countries that were available at a suitable spatial scale. Hence, we encourage
630 relevant authorities to publish more finer spatial scale data so that future researchers can
631 generalize the findings are a large scale, which could be significant for dengue surveillance
632 and prevention.

633

634 Moreover, with the majority of healthcare resources being directed towards combating
635 COVID-19, there is a valid concern that dengue cases may have been under-reported
636 during the pandemic (Olive et al., 2020), which could explain the decrease in cases seen
637 at a global level. However, a recent statistical analysis by Chen et al. (Chen et al., 2022)
638 suggests that the observed variations in dengue fever during the pandemic are unlikely to

639 be solely due to under-reporting. Despite this reassurance, it is important to conduct
640 further studies in the future to explore the possibility and extent of under-reporting during
641 pandemics to minimize data uncertainty and draw significant conclusions about the impact
642 of pandemics on dengue transmission.

643

644 Lastly, the global response to COVID-19 measures has led to a reduction in nitrogen oxide
645 emissions, thereby promoting short-term warming (Forster et al., 2020), which could
646 potentially influence the dengue incidences. However, this study did not confirm that the
647 differences in the exposure-response relationships between environmental variables and
648 dengue incidences before and during the pandemic were definitely influenced by COVID-
649 19. Instead, it is plausible that various environmental factors underwent short-term and
650 slight changes for different reasons during these two periods. Further investigation is
651 required to ascertain what factors are statistically significantly related to the changes of
652 exposure-response relationship between environmental variables and dengue over the two
653 time periods.

654

655 **5. Conclusion**

656

657 By using time series analysis, we were able to identify the unique impact of COVID-19
658 on dengue transmission in each of the three countries studied. Although all three
659 experienced localized dengue risk during the pandemic, Singapore was particularly
660 affected by an intensified seasonality effect that led to an unprecedented outbreak of
661 dengue fever in 2020. Additionally, the regional synchrony of dengue underscores the
662 importance of collaboration across borders in the fight against fever dengue. Finally, by
663 employing a distributed lag nonlinear model with NPI, we identified varying degrees of

664 spatial differences in the exposure-response relationships between environmental
665 variables and dengue incidences both pre- and during-COVID-19. Our findings highlight
666 that the changes in human mobility patterns resulting from government interventions
667 against COVID-19, coupled with the indirect impacts on short-term environmental change,
668 can exert varying degrees of dengue transmission.

669

670 **CRedit authorship contribution statement**

671

672 **Wei Luo:** Writing - Review & Editing, Writing - Original Draft, Conceptualization,
673 Supervision, Project administration, Funding acquisition. **Zhihao Liu:** Writing - Original
674 Draft, Writing - Review & Editing, Methodology, Software, Formal analysis,
675 Investigation, Data Curation, Visualization. **Yiding Ran:** Writing - Original Draft,
676 Writing - Review & Editing, Conceptualization, Methodology, Software, Formal analysis,
677 Investigation, Data Curation, Visualization. **Mengqi Li:** Methodology, Software, Formal
678 analysis, Investigation, Data Curation, Visualization. **Yuxuan Zhou:** Conceptualization,
679 Investigation. **Weitao Hou:** Data Curation. **Shengjie Lai:** Writing - Review & Editing,
680 Conceptualization. **Sabrina L Li:** Writing - Review & Editing. **Ling Yin:** Writing -
681 Review & Editing.

682

683 **Declaration of competing interest**

684

685 The authors declare that there is no conflict of interest regarding the publication of this
686 article.

687

688 **Acknowledgements**

689

690 This work was supported in part by National University of Singapore FY2020 START-
691 UP GRANT under WBS A-0003623-00-00 and National Natural Science Foundation of
692 China (No.42271475). SL was supported by the National Institute for Health (MIDAS
693 Mobility R01AI160780) and the Bill & Melinda Gates Foundation (INV-024911). It
694 involves data collection, analysis, and interpretations well as publication fee if applicable.
695 We were not precluded from accessing data in the study, and we accept responsibility to
696 submit for publication.

697

698

699

700

701

702

703

704

705

706

707

708

709

710

711

712

713

714

715

716

717

718 **References**

719

720 [1] World Health Organization. *Dengue and severe dengue*. No. WHO-
721 EM/MAC/032/E. World Health Organization. Regional Office for the Eastern
722 Mediterranean, 2014.

723 [2] Morin, Cory W., Andrew C. Comrie, and Kacey Ernst. "Climate and dengue
724 transmission: evidence and implications." *Environmental health perspectives* 121.11-12
725 (2013): 1264-1272.

726 [3] Srisawat, Nattachai, et al. "World Dengue Day: A call for action." *PLoS Neglected*
727 *Tropical Diseases* 16.8 (2022): e0010586.

728 [4] Chen, Yuyang, et al. "Measuring the effects of COVID-19-related disruption on
729 dengue transmission in southeast Asia and Latin America: a statistical modelling study."
730 *The Lancet infectious diseases* 22.5 (2022): 657-667.

731 [5] Wilder-Smith, Annelies. "Dengue during the COVID-19 pandemic." *Journal of*
732 *Travel Medicine* 28.8 (2021): taab183.

733 [6] Lai, Shengjie, et al. "Effect of non-pharmaceutical interventions to contain
734 COVID-19 in China." *nature* 585.7825 (2020): 410-413.

735 [7] Yin, Ling, et al. "A data driven agent-based model that recommends non-
736 pharmaceutical interventions to suppress Coronavirus disease 2019 resurgence in
737 megacities." *Journal of the Royal Society Interface* 18.181 (2021): 20210112.

738 [8] Xiong, Chenfeng, et al. "Mobile device data reveal the dynamics in a positive
739 relationship between human mobility and COVID-19 infections." *Proceedings of the*
740 *National Academy of Sciences* 117.44 (2020): 27087-27089.

- 741 [9] Zhu, Rui, et al. "The effects of different travel modes and travel destinations on
742 COVID-19 transmission in global cities." *Science bulletin* 67.6 (2022): 588.
- 743 [10] Wesolowski, Amy, et al. "Impact of human mobility on the emergence of dengue
744 epidemics in Pakistan." *Proceedings of the national academy of sciences* 112.38 (2015):
745 11887-11892.
- 746 [11] Zhu, Guanghu, et al. "Effects of human mobility, temperature and mosquito
747 control on the spatiotemporal transmission of dengue." *Science of the Total Environment*
748 651 (2019): 969-978.
- 749 [12] Castro, Lauren A., et al. "Using heterogeneous data to identify signatures of
750 dengue outbreaks at fine spatio-temporal scales across Brazil." *PLoS neglected tropical*
751 *diseases* 15.5 (2021): e0009392.
- 752 [13] Salje, Henrik, et al. "Reconstructing unseen transmission events to infer dengue
753 dynamics from viral sequences." *Nature communications* 12.1 (2021): 1810.
- 754 [14] Olive, Marie-Marie, et al. "The COVID-19 pandemic should not jeopardize
755 dengue control." *PLoS neglected tropical diseases* 14.9 (2020): e0008716.
- 756 [15] Reegan, Appadurai Daniel, et al. "COVID-19 lockdown: impact assessment on
757 Aedes larval indices, breeding habitats, effects on vector control programme and
758 prevention of dengue outbreaks." *Heliyon* 6.10 (2020).
- 759 [16] Ooi, Eng-Eong, and Duane J. Gubler. "Dengue in Southeast Asia: epidemiological
760 characteristics and strategic challenges in disease prevention." *Cadernos de saude publica*
761 25 (2009): S115-S124.
- 762 [17] Colón-González, Felipe J., et al. "Projecting the future incidence and burden of
763 dengue in Southeast Asia." *nature communications* 14.1 (2023): 5439.

- 764 [18] Van Panhuis, Willem G., et al. "Region-wide synchrony and traveling waves of
765 dengue across eight countries in Southeast Asia." *Proceedings of the National Academy
766 of Sciences* 112.42 (2015): 13069-13074.
- 767 [19] Shepard, Donald S., Eduardo A. Undurraga, and Yara A. Halasa. "Economic and
768 disease burden of dengue in Southeast Asia." *PLoS neglected tropical diseases* 7.2 (2013):
769 e2055.
- 770 [20] Huang, Liping, et al. "Geographical clusters of dengue outbreak in Singapore
771 during the Covid-19 nationwide lockdown of 2020." *Scientific Data* 9.1 (2022): 547.
- 772 [21] Ong, Song-Quan, Hamdan Ahmad, and Ahmad Mohiddin Mohd Ngesom.
773 "Implications of the COVID-19 lockdown on dengue transmission in
774 Malaysia." *Infectious disease reports* 13.1 (2021): 148-160.
- 775 [22] Yip, Stan, et al. "Spatio-temporal detection for dengue outbreaks in the Central
776 Region of Malaysia using climatic drivers at mesoscale and synoptic scale." *Climate Risk
777 Management* 36 (2022): 100429.
- 778 [23] Aswi, Aswi, et al. "Bayesian spatial and spatio-temporal approaches to modelling
779 dengue fever: a systematic review." *Epidemiology & Infection* 147 (2019): e33.
- 780 [24] Xu, Zhiwei, et al. "Spatiotemporal patterns and climatic drivers of severe dengue
781 in Thailand." *Science of The Total Environment* 656 (2019): 889-901.
- 782 [25] Lam, Lawrence TM, Ying Xian Chua, and David HY Tan. "Roles and challenges
783 of primary care physicians facing a dual outbreak of COVID-19 and dengue in Singapore."
784 *Family practice* 37.4 (2020): 578-579.
- 785 [26] Yan, Gabriel, et al. "Covert COVID-19 and false-positive dengue serology in
786 Singapore." *The Lancet Infectious Diseases* 20.5 (2020): 536.

- 787 [27] Saita, Sayambhu, Sasithan Maeakhian, and Tassanee Silawan. "Temporal
788 variations and spatial clusters of dengue in thailand: Longitudinal study before and during
789 the coronavirus disease (covid-19) pandemic." *Tropical medicine and infectious disease*
790 7.8 (2022): 171.
- 791 [28] Liyanage, Prasad, Joacim Rocklöv, and Hasitha Aravinda Tissera. "The impact of
792 COVID–19 lockdown on dengue transmission in Sri Lanka; A natural experiment for
793 understanding the influence of human mobility." *PLoS neglected tropical diseases* 15.6
794 (2021): e0009420.
- 795 [29] Li, Naizhe, et al. "Assessing the impact of COVID-19 border restrictions on
796 dengue transmission in Yunnan Province, China: an observational epidemiological and
797 phylogenetic analysis." *The Lancet Regional Health–Western Pacific* 14 (2021).
- 798 [30] Lim, Jue Tao, et al. "Decreased dengue transmission in migrant worker
799 populations in Singapore attributable to SARS-CoV-2 quarantine measures." *Journal of*
800 *Travel Medicine* 28.2 (2021): taaa228.
- 801 [31] Surendran, S. N., et al. "Reduced dengue incidence during the COVID-19
802 movement restrictions in Sri Lanka from March 2020 to April 2021." *BMC public health*
803 22.1 (2022): 388.
- 804 [32] Gui, Hao, et al. "Weather factors associated with reduced risk of dengue
805 transmission in an urbanized tropical city." *International Journal of Environmental*
806 *Research and Public Health* 19.1 (2021): 339.
- 807 [33] Wang, Yawen, et al. "Impact of extreme weather on dengue fever infection in four
808 Asian countries: A modelling analysis." *Environment International* 169 (2022): 107518.

- 809 [34] A Sarma, Devojit Kumar, et al. "An assessment of remotely sensed environmental
810 variables on Dengue epidemiology in Central India." *PLOS Neglected Tropical Diseases*
811 16.10 (2022): e0010859.
- 812 [35] Chien, Lung-Chang, and Hwa-Lung Yu. "Impact of meteorological factors on the
813 spatiotemporal patterns of dengue fever incidence." *Environment international* 73 (2014):
814 46-56.
- 815 [36] Chuang, Ting-Wu, Luis Fernando Chaves, and Po-Jiang Chen. "Effects of local
816 and regional climatic fluctuations on dengue outbreaks in southern Taiwan." *PLoS One*
817 12.6 (2017): e0178698.
- 818 [37] Bonnin, Lucas, et al. "Predicting the effects of climate change on dengue vector
819 densities in Southeast Asia through process-based modeling." *Environmental Health*
820 *Perspectives* 130.12 (2022): 127002.
- 821 [38] Cheng, Jian, et al. "Extreme weather events and dengue outbreaks in Guangzhou,
822 China: a time-series quasi-binomial distributed lag non-linear model." *International*
823 *Journal of Biometeorology* 65 (2021): 1033-1042.
- 824 [39] Singapore department of statistics. <https://www.singstat.gov.sg/>. [Online;
825 accessed 21-February-2023].
- 826 [40] The official portal of the sarawak government. <https://sarawak.gov.my/>. [Online;
827 accessed 21-February-2023].
- 828 [41] Xu, Lei, et al. "Climate variation drives dengue dynamics." *Proceedings of the*
829 *National Academy of Sciences* 114.1 (2017): 113-118.
- 830 [42] Naish, Suchithra, et al. "Climate change and dengue: a critical and systematic
831 review of quantitative modelling approaches." *BMC infectious diseases* 14 (2014): 1-14.

- 832 [43] Hale, Thomas, et al. "A global panel database of pandemic policies (Oxford
833 COVID-19 Government Response Tracker)." *Nature human behaviour* 5.4 (2021): 529-
834 538.
- 835 [44] Hartley, L. M., C. A. Donnelly, and G. P. Garnett. "The seasonal pattern of dengue
836 in endemic areas: mathematical models of mechanisms." *Transactions of the royal society
837 of tropical medicine and hygiene* 96.4 (2002): 387-397.
- 838 [45] Cleveland, Robert B., et al. "STL: A seasonal-trend decomposition." *J. Off. Stat*
839 6.1 (1990): 3-73.
- 840 [46] Gasparrini, Antonio. "Distributed lag linear and non-linear models in R: the
841 package dlnm." *Journal of statistical software* 43.8 (2011): 1.
- 842 [47] Gasparrini, Antonio, et al. "A penalized framework for distributed lag non-linear
843 models." *Biometrics* 73.3 (2017): 938-948.
- 844 [48] Thai Meteorological Department. <https://www.tmd.go.th/en/weather/regions>.
- 845 [49] Colón-González, Felipe J., et al. "The effects of weather and climate change on
846 dengue." *PLoS neglected tropical diseases* 7.11 (2013): e2503.
- 847 [50] World Health Organization (WHO). "Dengue increase likely during rainy season:
848 WHO warns." *Available from:[Accessed 30 April 2020]* (2020).
- 849 [51] Singapore Health Ministry. [https://www.moh.gov.sg/news-
850 highlights/details/further-easing-of-community-and-border-measures](https://www.moh.gov.sg/news-highlights/details/further-easing-of-community-and-border-measures) (accessed March 3,
851 2024).
- 852 [52] Thailand Health Ministry. [https://ddc.moph.go.th/viralpneumonia/eng/index.php
853](https://ddc.moph.go.th/viralpneumonia/eng/index.php) (accessed March 3, 2024).
- 854 [53] Malaysia Health Ministry, COVIDNOW. [https://covidnow.moh.gov.my/
855](https://covidnow.moh.gov.my/) (accessed March 3, 2024).

- 856 [54] Brady, Oliver, and Annelies Wilder-Smith. "What is the impact of lockdowns on
857 dengue?." *Current infectious disease reports* 23 (2021): 1-8.
- 858 [55] Buhler, Claudia, et al. "Environmental methods for dengue vector control—A
859 systematic review and meta-analysis." *PLoS neglected tropical diseases* 13.7 (2019):
860 e0007420.
- 861 [56] Sulistyawati, Sulistyawati, et al. "Rapid Appraisals of the Transformation Strategy
862 Required to Sustain Dengue Vector Control During and After the COVID-19 Pandemic
863 in Indonesia." *Risk Management and Healthcare Policy* (2023): 93-100.
- 864 [57] Aborode, Abdullahi Tunde, et al. "Dengue and Coronavirus disease (COVID-19)
865 syndemic: Double threat to an overburdened healthcare system in Africa." *The*
866 *International Journal of Health Planning and Management* 37.3 (2022): 1851-1854.
- 867 [58] Harapan, Harapan, et al. "Covid-19 and dengue: double punches for
868 dengue-endemic countries in Asia." *Reviews in medical virology* 31.2 (2021): e2161.
- 869 [59] Zhou, Yuquan, et al. "Operational Plan, Effect Verification, and Key Technical
870 Settings for a Stadium-Scale Artificial Rain Reduction Experiment." *Journal of*
871 *Meteorological Research* 37.5 (2023): 643-665.
- 872 [60] Servais, Gerard. "Regional: Regional Public Goods for Health: Combating Dengue
873 in ASEAN." (2009).
- 874 [61] Luo W, Zhou Y, Liu Z, et al. Cross-regional analysis of the association between
875 human mobility and COVID-19 infection in Southeast Asia during the transitional period
876 of "living with COVID-19"[J]. *Health & place*, 2023, 81: 103000.
- 877 [62] Luo, Wei, et al. "Investigating linkages between spatiotemporal patterns of the
878 COVID-19 Delta variant and public health interventions in Southeast Asia: prospective

879 space-time scan statistical analysis method." *JMIR Public Health and Surveillance* 8.8
880 (2022): e35840.

881 [63] Li, Yangyang, et al. "The impact of COVID-19 on NO₂ and PM_{2.5} levels and
882 their associations with human mobility patterns in Singapore." *Annals of GIS* 28.4 (2022):
883 515-531.

884 [64] Liu, Zhaoyin, et al. "Association between NO₂ and human mobility: a two-year
885 spatiotemporal study during the COVID-19 pandemic in Southeast Asia." *Annals of*
886 *GIS* (2024): 1-18.

887 [65] Forster, Piers M., et al. "Current and future global climate impacts resulting from
888 COVID-19." *Nature Climate Change* 10.10 (2020): 913-919.

889

890 **Supporting information**

891 S1 File. Study areas in the exposure-response relationship between dengue incidence and
892 environmental variables; Figures of exposure-response relationships of subregions of
893 Thailand; Retrospective Poisson Space-Time Scan Statistic.

894