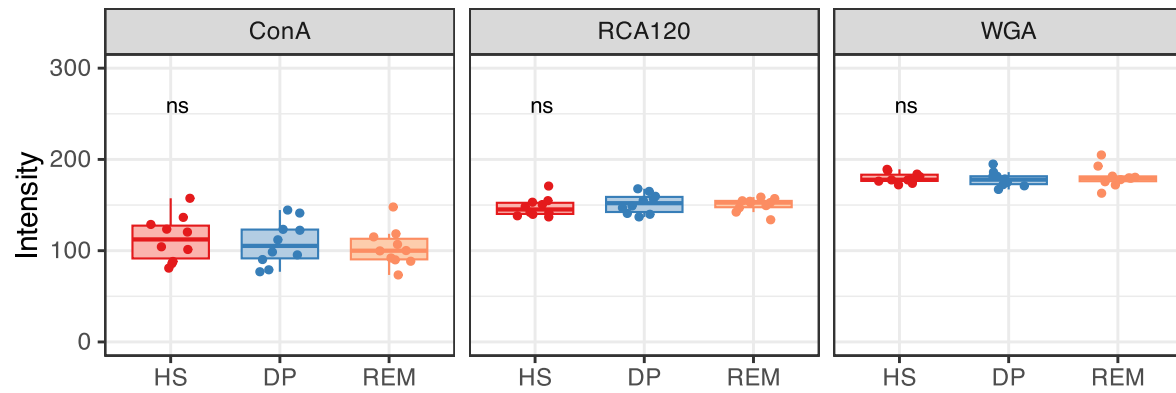


## Supplementary Figures



**Fig. S1. Lectin array data of human leukocytes in healthy subjects (HS), patients with MDD in depressive (DP) or remission state (REM).** Primary data are obtained from Yamagata H et al., 2017. Data are the mean  $\pm$  s.d. Significance was determined by one-way ANOVA.

**A**

Protein	Uniprot Accession	Molecular Weight (kDa)	HS #1		HS #2	
			Score	Matches	Score	Matches
Glial fibrillary acidic protein (Fragment)	K7EPT8	50	82	3(2)	50	1(1)
Fibronectin	P02751	230	-	-	50	1(1)
Junction plakoglobin	P14923	23	37	2(1)	-	-
von Willebrand factor	P04275	260	36	3(1)	53	5(1)
N-glycosylase/DNA lyase (Fragment)	H7C0A1		-	-	34	3(0)
Hornerin	Q86YZ3	50	20	2(0)	-	-

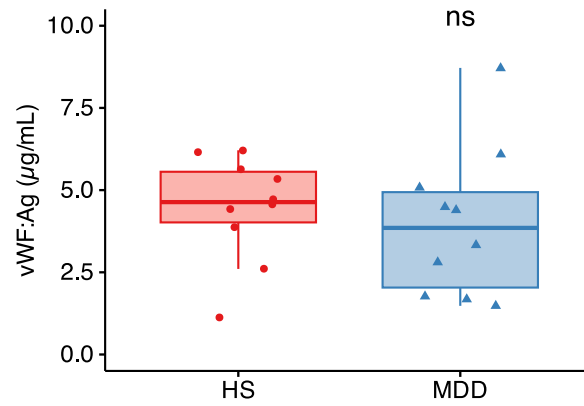
**B**

```

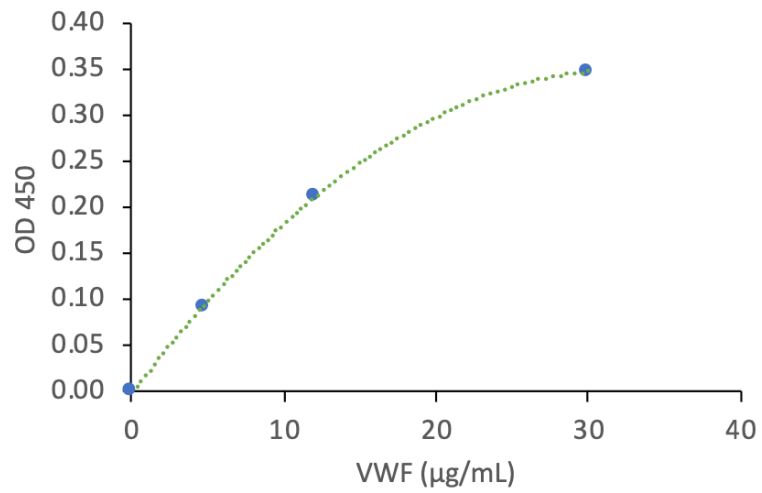
>sp|P04275|VWF_HUMAN von Willebrand factor OS=Homo sapiens OX=9606 GN=VWF PE=1 SV=4
MIPARFAGVL LALALILPGT LCAEGTRGRS STARCSLFGS DFNVTDFGSM YSFAGYCSYL LAGGCQKRSF SIIGDFQNGK RVLSLVYLGE FFDIHLFVNG
TVTQGDQRVS MPYASKGLYL ETEAGYYKLS GEAYGFVARI DSGSNFQVLL SDRYFNKTCG LCGNFNIFAE DDFMTQEGTL TSDPYDFANS WALSSGEQWC
ERASPPSSSC NISSGEMQKG LWEQCQLLKS TSVFARCHPL VDPEPFVALC EKTLCECAGG LECACPALLE YARTCAQEGM VLYGWTDHSA CSPVCAGME
YRQCVSPCAR TCQSLHINEM CQERCVDGCS CPEGQLLDEG LCVESTCEPC VHS GKRYPPG TSLSRDCNTC ICRNSQWICS NEECPGECVL TGQSHFKSFD
NRYFTFSGIC QYLLARDCQD HSF SIV IETV QCADDRDAVC TRSVTVRLPG LHNSLVK LKH GAGVAMDGDQ VQLPLLLKGD L RIQHTVTASV RLSYGEDLQM
DWDGRGRLLV KLSFPVYAGT CGLCGNYNGN QGDDFLTSPG LAEPRVEDFG NAWKLGDCQ DLQKQHS DPC ALNPRMTRFS EEACAVLTSP TFEACHRAVS
PLPYLRNCRY DVCSCSDGRE CLCGALASYA AACAGRGVRV AWREPGRCEL NCPKQGVYLG CGTPCNLTCR SLSYPDEECN EACLEGCFCP PGLYMDERGD
CVPKAQCPCY YDGEIFQPED IFSDHHTMCY CEDGFMHCTM SGVPGSLLPD AVLSSPLSHR SKRSLSCRPP MVKLVCPADN LRAEGLECTK TCQNYDLECM
SMGCVSGGLC PPGMVRHENR CVALERCPCF HQGKEYAPGE TVKIGCNTCV CQDRKWNCTD HVC DATCSTI GMAHYLTFDG LKYLFPGECQ YVLVQDYCGS
NPGTFRILVG NKGCSHPSVK CKKRVTILVE GGEIELFDGE VNVKRPKDE THFEVVESEGR YIILLGKAL SVVWDRHLSI SVVLKQTYQE KVCGLCGNFD
GIQNNDLTSS NLQVEEDPVD FGNWSKVSSQ CADTRKVP LD SSPATCHNNI MKQTMVDSSC RILTSDFVDQ CNKLVDPPEY LDVCIYDTC S CESIGDCACF
CDTIAAYAHV CAQHGKVV TW RTATLCPQSC EERNLRENGY ECEWRYN SCA PACQVTCQHP EPLACPVQCV EGCHAHCPPG KILDELLQTC VDPEDCPVCE
VAGRRFASGK KVTLNPSDPE HCQICHCDV NLTCEACQEP EGLVVPPTDA PVSPTLYVE DISEPPLHDF YCSRLLDLVF LLDGSSRLSE AEFV LKAFV
VDMMERLRIS QKWVRVAVVE YHDGSHAYIG LKDRKRPSSEL RRIASQVKYA GSQVASTSEV LKYTLFQIFS KIDRPEASRI TLLLMASQEP QRMSRNFVRY
VQGLKKKKVI VIPVIGIPHA NLKQIRLIEK QAPENKAFVL SSVDELEQQR DEIVSYLCDL APEAPPPTLP PDMAQVTVGP GLLGVSTLGP KRNSMVL DVA
FVLEGS D KIG EADFNRSKEF MEEVIQRMDV QGDSIHVTVL QYSYMTVEY PFSEAQSKGD ILQVRVREIRY QGGRNTNTGL ALRYSL DSHF LVSQGDREQA
PNLVYVMVTGN PASDEIKRPL GDIQVVP IGV GPNANVQELE RIGWPNAPIL IQDFETLPRE APDLVLQRC C SGEGLQIPTL SPAPDCSQPL DVILLDGGSS
SFPASYFDEM KSF AKAFISK ANIGPRLTQV SVLQYGSITT IDVPWNVPE KAHL LSLVDV M QREGGPSQI GDALGF AVRY LTSEM HGARP GASKAVVILV
TDVSVDSVDA AADAARSNRV TVFPIGIGDR YDAAQLRILA GPAGDSNVVK LQRIEDLPTM VTLGNSFLHK L C SGFVRICM DEDGNEKRP G DWWTLPDQCH
TVTQCPDQGT LLKSHRVNCD RGLRPSCPNS QSPVKVEETC GCRWTCPCVC TGSSTRHIVT FDGQNFKLTG SCSYVLFQNK EQDLEVILHN GACSPGARQG
CMKSIEVKHS ALSVELHSDM EVT VNGRLVS VPYVGGNMEV NVYGAIMHEV R FNHLGHIFT FTPQNEFQL QLSPKTFASK TYGLCGICDE NGANDFMLRD
GTVTTDMKTL VQEWTVQRP G QTCQP ILEE Q CLVPDSSHQC VLLLPLFAEC HKVLAPATFY AICQQDSCHQ EQVCEVIASY AHL CRTNGVC VDWRTPDFCA
MSCPPSLVYN HCEHGCRHC DGNVSSCGDH PSEGCF CPPD KVMLEGCVP EEACTQCIGE DGVOHQFLEA WVPDHQPCQI CTCLSGRKVN CTTQPCPTAK
APTCLGCEVA RLRQNA DQCC PEYECVDPV SCDLPPVPHC ERGLQPTLTN PGECRPNFTC ACRKEECKRV SPPSCPPHRL PTLRKTQCCD EYECACNCVN
STVSCPLGYL ASTATND CGC TTTTCLPDKV CVHRSTIYPV GQFWEEGCDV CTCTMEDAV MGLRVAQCSQ KPCEDSCRS G FTYVLHEGEC CGRCLPSACE
VVTGSPRGDS QSSWKS VGSQ WASPENPLI NECVRVKEEV FIQQRNVSQP QLEVPVPCPSG FQLSCKTSAC CPSCRCERME ACMLNGTVIG PGKTMIDVC
TTCRCMVQVG VISGFLECR KTTCNPCPLG YKEENNTGEC CGRCLPTACT IQLRGQIMT LKRDETLQDG CDTHFCVKVNE RGEYFWEKRV TGCPPFDEHK
CLAEGGKIMK IPGTCCDTCE EPECNDITAR LQYVKVGSCK SEVEVDIHYC QGKASKAMY SIDINDVQDQ CSCCSPTRTE PMQVALHCTN GSVVYHEVLN
AMECKSPRK CSK

```

**Fig. S2. Identification of vWF as a protein recognized by WGA. (A)** Mass spectrometry-based identification of von Willebrand factor (vWF) in plasma EVs obtained from healthy subjects. **(B)** Sequence of human vWF (Uniprot: P04275) with the peptides identified by mass spectrometry indicated in red.



**Fig. S3. No significant differences for vWF levels in human plasma were found between patients with MDD and healthy subjects.** Quantification of vWF antigen (Ag) by sandwich ELISA between patients with MDD in depressive state (MDD, n = 10) and HS (n = 10). Significance was determined by Mann - Whitney U test to test for significance. n.s. nonsignificant.



**Fig. S4. Standard curve for a sandwich WGA-vWF ELISA.** Absorbance (OD450) correlates with the amount of human recombinant vWF. Graph shows average values of technical duplicates on different days.  $R^2 = 0.9998$ .

## Supplementary Tables

**Table S1. Demographics and clinical characteristics of study participants.**

	Baseline			After follow-up in MDD cohort		
	HS	MDD	<i>p</i> - value	MDD-DP	MDD-REM	<i>p</i> - value
Sample size	20	21		10	11	
Age (y)	55.5 ± 7.6	57.6 ± 6.0	0.249*	60.2 ± 5.5	56.5 ± 5.5	0.173*
Male/Female	7/13	9/12	0.606†	5/5	4/7	0.528†
Onset age (y)	-	49.0 ± 12.7	-	53.0 ± 11.3	45.5 ± 13.4	0.217*
HDRS	1.1 ± 1.0	23.8 ± 3.6	9.85e <sup>-27*</sup>	25.0 ± 4.3	3.3 ± 2.6	1.43e <sup>-10*</sup>
GAF	92.0 ± 4.3	51.2 ± 6.7	6.64e <sup>-24*</sup>	49.5 ± 7.5	86.5 ± 7.8	6.52e <sup>-9*</sup>
Antidepressants <sup>§</sup> (equivalent dose of imipramine) (mg)	-	220.1 ± 104.8	-	190.0 ± 88.9	209.3 ± 116.6	0.691*

Demographic data of healthy subjects (HS) and patients with major depressive disorder (MDD). After the follow-up period in the MDD cohort, we determined a diagnosis of permanent depressive (MDD-DP) or remission state (MDD-REM). Data is presented as mean (standard deviation) or the number of participants in each group. <sup>§</sup>point in time of diagnosis.

\*Independent-samples t-test. †Chi-squared test.

**Table S2. Lectins used for detection of glycosylation of EVs.**

Lectins	Origin	Primary recognition sugars
<b>Con A</b>	Concanavalin A from <i>Canavalia ensiformis</i>	α-D-Man, α-D-Glc
<b>SBA</b>	<i>Soybean Agglutinin</i> Glycine max (soybean)	α<β GalNAc
<b>WGA</b>	<i>Triticum vulgare</i> (wheat germ) agglutinin	D-GlcNAc, Neu5Ac
<b>DBA</b>	<i>Dolichos biflorus</i> agglutinin	α-GalNAc
<b>UEA-I</b>	<i>Ulex europaeus</i> agglutinin 1	α-L-Fuc
<b>RCA<sub>120</sub></b>	<i>Ricinus communis</i> agglutinin	β-Gal
<b>PNA</b>	<i>Arachis hypogaea</i> (peanut) agglutinin	Gal-β (1-3)-GalNAc

Fuc: L-Fucose, Gal: D-Galactose, GalNAc: *N*-Acetylgalactosamine, Glc: D-Glucose, GlcNAc: *N*-Acetylglucosamine, Neu5Ac: N-glycan *N*-acetylneuraminic acid