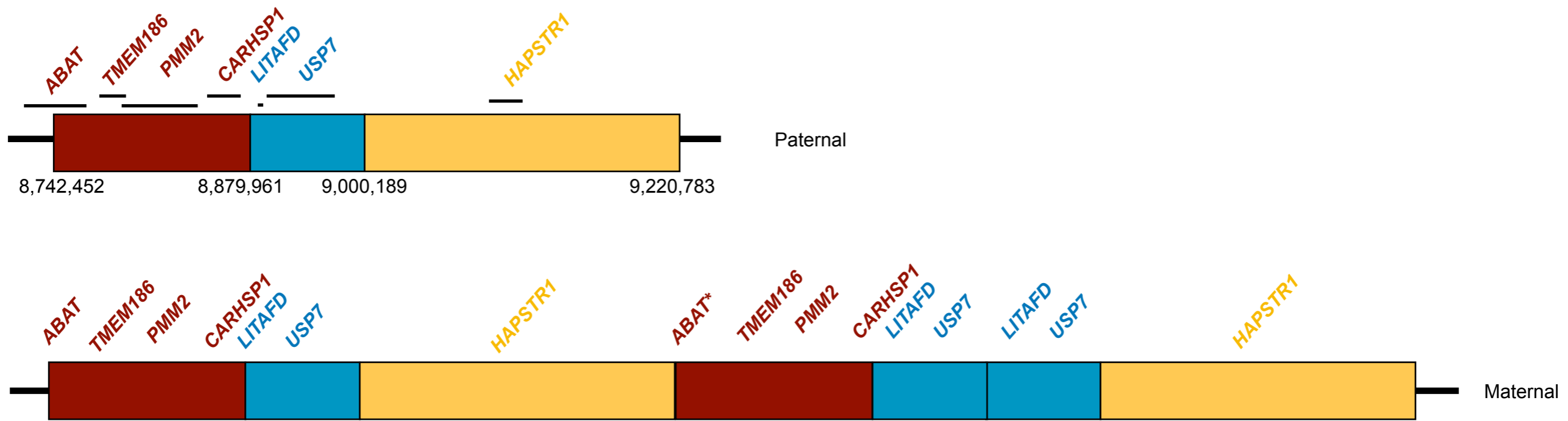
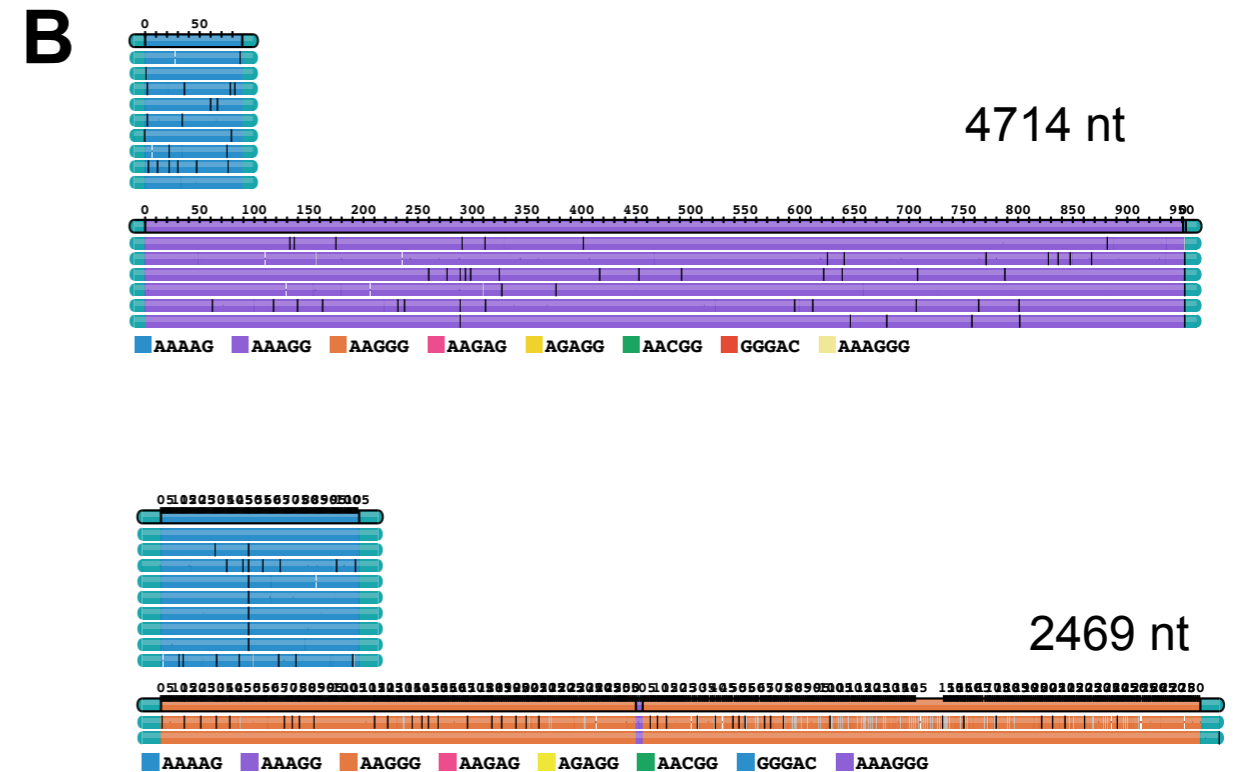
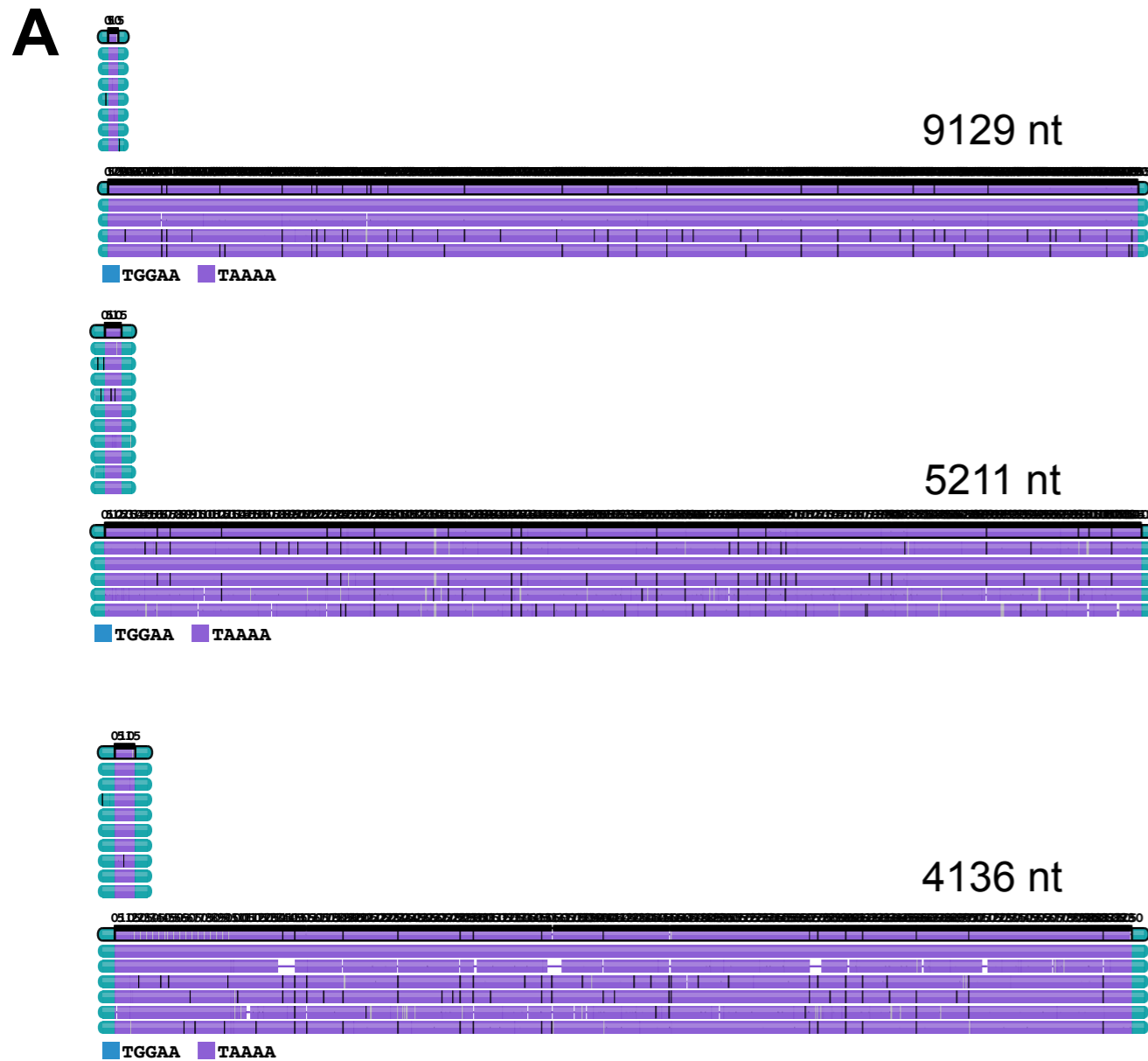


Supplemental Figure S1. Sorted, relative expression of transcripts in child and father using 3'-end RNA-seq. *HCFC1* (red dot) shows the greatest expression decrease in the proband relative to his father, an ~8.8-fold reduction. Ten counts in each sample were required.



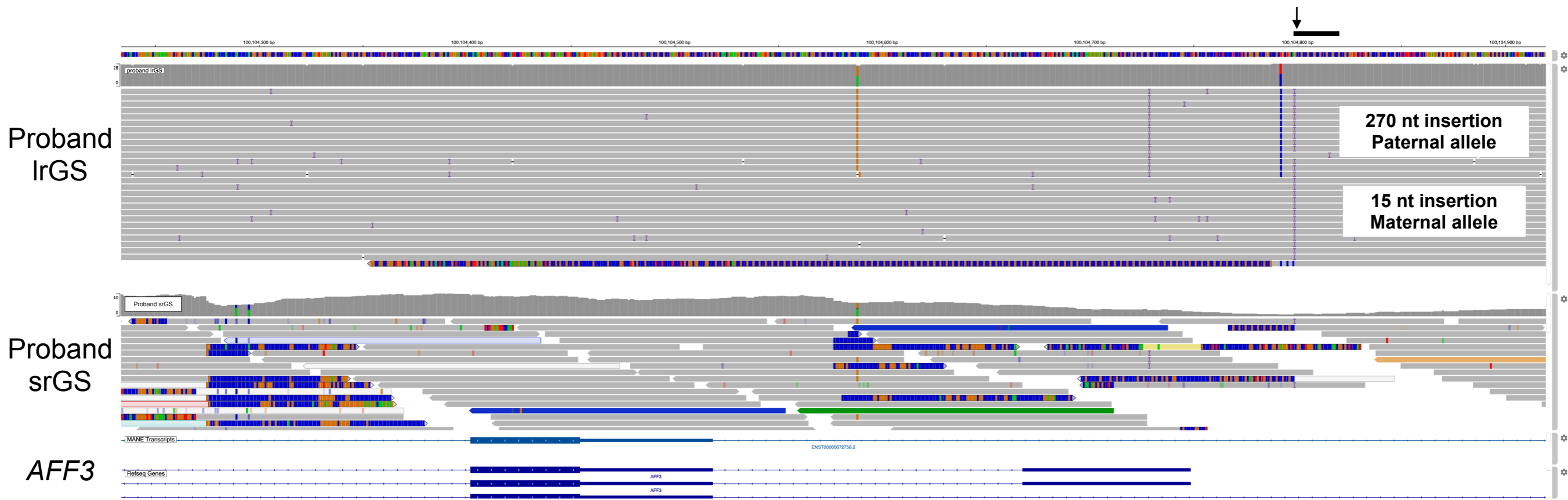
Supplemental Figure S2. chr16 dup schematic in Proband 4. Multiple regions are duplicated, resulting in an overall copy number of three for *TMEM186*, *PMM2*, *CARHSP1* and *HAPSTR*. Total copy numbers for *LITAFD* and *USP7* are four. Note that the additional copy of *ABAT* (asterisk) is partial.



Supplemental Figure S3. A. Several large heterozygous insertions in *BEAN1* that were determined to be benign based on sequence content (TAAAA). **B.** Heterozygous expansions in *RFC1* that were determined to be benign (AAAGG) and potentially clinically significant (AAGGG). Note though that only biallelic expansions in *RFC1* have been reported to be associated with disease, and further, this AAGGG repeat is interrupted by a small stretch of AAAGG. Visualization here used TRGT and TRVZ (see Methods).

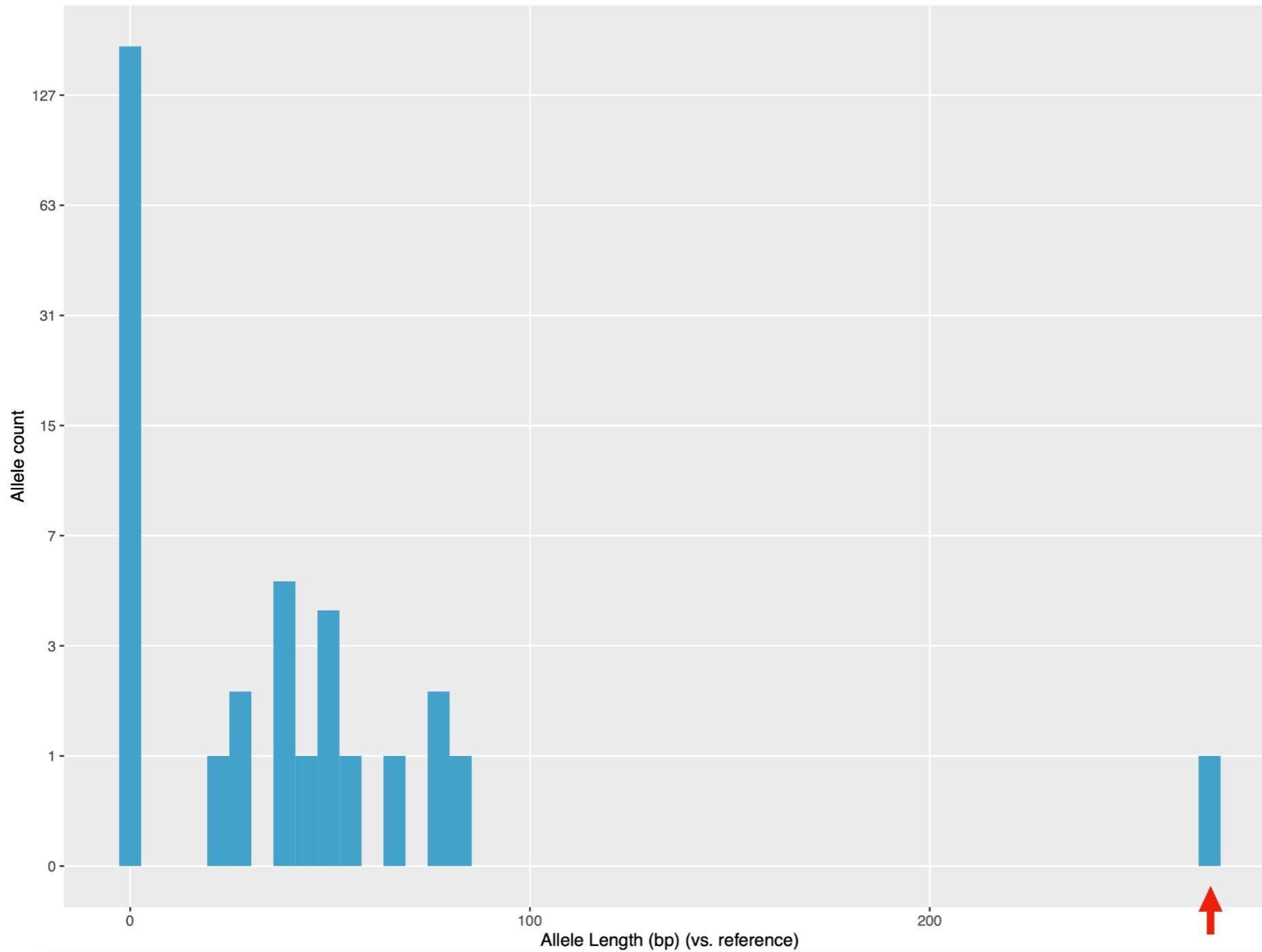


Supplemental Figure S4. A pathogenic 18 bp alanine tract expansion in *PHOX2B* (black arrow) was observed in a repeat region (black bar) in Proband 5. Some srGS reads have evidence of this insertion (red asterisk) but the variant was not called.

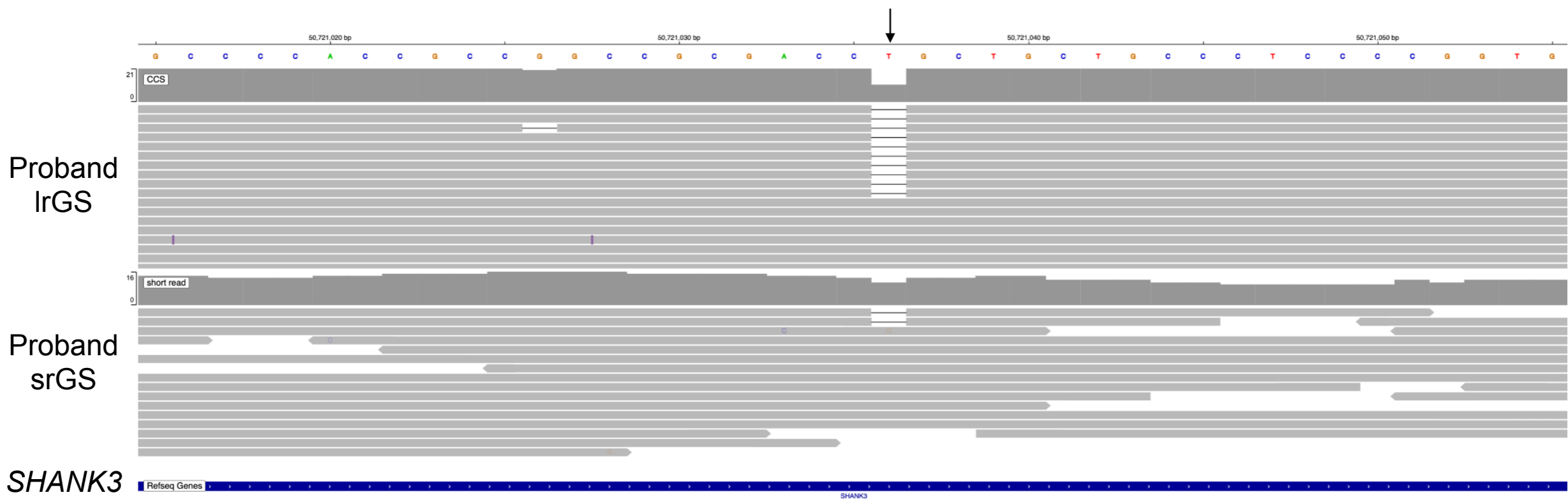


Supplemental Figure S5. A 270 bp insertion in the promoter of *AFF3* (black arrow) was observed in a repeat region (black bar) in Proband 6. Segregation of a downstream SNP determined that the 270 bp insertion is on the paternal allele.

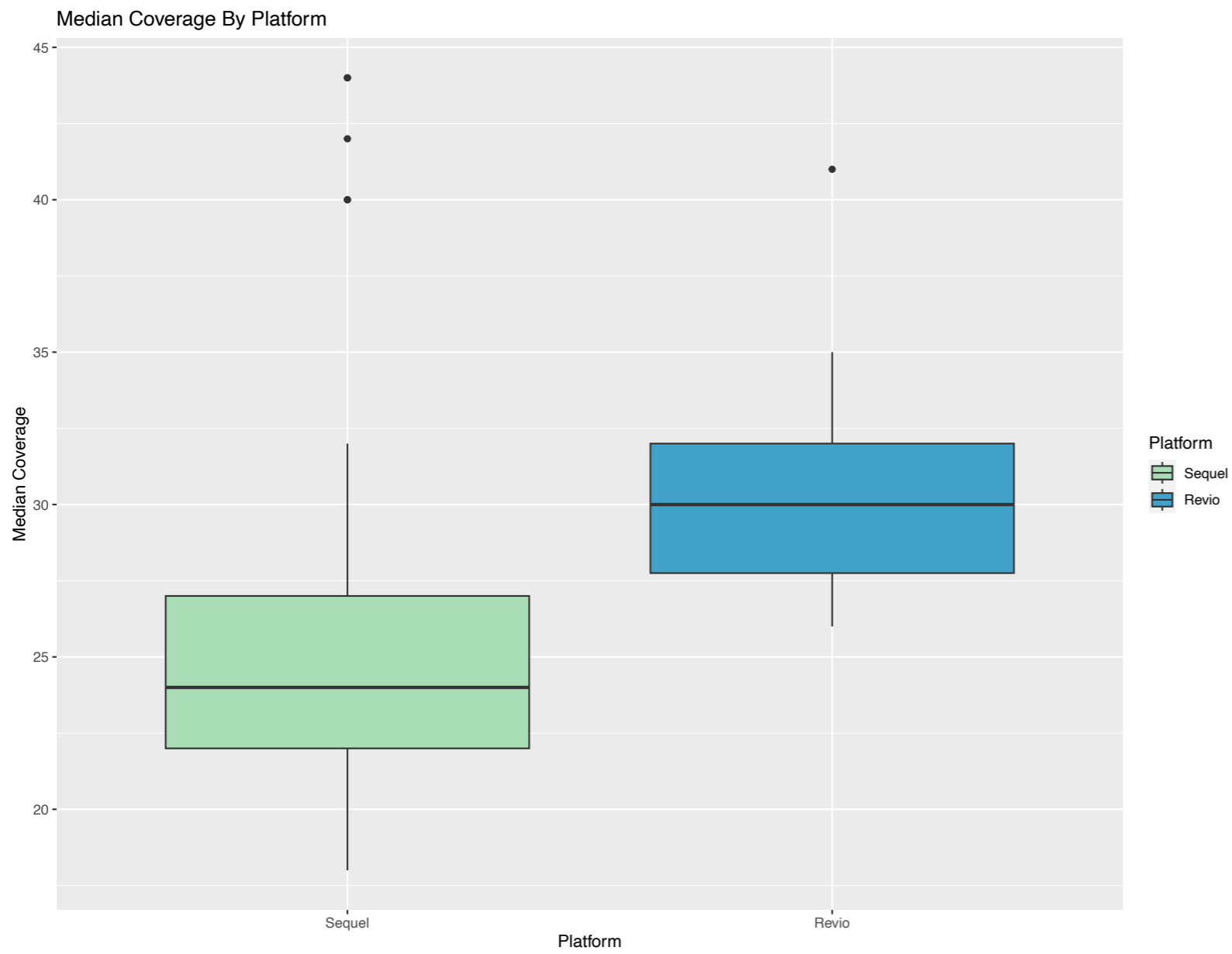
AFF3 Repeat Region Allele Length Distribution (n=192 alleles)



Supplemental Figure S6. Distribution of lengths of variant calls in the promoter of *AFF3* (chr2:100104769-100104854) in 96 probands. The 270 nt insertion in *AFF3* in Proband 6 (red arrow) is a clear outlier compared to other calls in long-read data in the region.



Supplemental Figure S7. A 1 bp deletion in *SHANK3* (black arrow) was observed in IrGS data and srGS data but was not called in srGS in Proband 7.



Supplemental Figure S8. Median coverage by platform.