

MedRxiv

1 Preprint

2 Live Birth resulted from a direct thawing of vitrified
3 human blastocyst in a regular embryo culture
4 medium

5

6 David Yiu Leung Chan ^{*1,2}, Murong Xu ^{1,2}, Waner Wu ^{1,2}, Ka Kei Fung ¹, Crystal Hiu Yan Lock ¹, Linyao Zhang ¹,
7 Hoi Man Wan ¹, Carol Pui Shan Chan ^{1,2}, Jacqueline PW Chung ^{1,2}

8 1 Assisted Reproductive Technology Unit, Department of Obstetrics and Gynaecology, Faculty of
9 Medicine, The Chinese University of Hong Kong, N.T., Hong Kong Special Administrative Region, China

10 2 Department of Obstetrics and Gynaecology, Prince of Wales Hospital, Faculty of Medicine, The
11 Chinese University of Hong Kong, Shatin, N.T. Hong Kong Special Administrative Region, China

12 *Corresponding Author

13 **Abstract**

14 Background: Stepwise removal of cytotoxic cryoprotectant and rehydration in serial osmotic solutions to
15 prevent osmotic shock have been the central dogmas in cryobiology for mammalian embryos. The theory
16 behind is to gradually remove cytotoxic cryoprotectants and rehydrate the embryo to minimize the
17 damages during the vitrified-thaw processes. The whole process is time consuming and laborious routine
18 in the IVF laboratory. Here, we showed that direct thawing a vitrified blastocyst in a regular human
19 embryo culture medium without any cryoprotectant support 100% thawing survival rate regardless to
20 blastocysts' grading. Surprisingly, better implantation outcome was observed in our small cohort trial
21 although not reached a significant different. There are more than million frozen embryo transfers around
22 the world each year; a faster, safer and cheaper method can save significant amount of money for patients
23 undergoing IVF treatment worldwide.

24 Methods: A two-phase trial were conducted: Technical phase and clinical phase. In the Technical phase,
25 4 commercially available one-step media and PBS solution were used for thawing procedure on donated
26 human vitrified blastocysts. The survival rate was determined by re-expansion under time-lapse imaging.
27 All of the one-step media at a specific range of osmolality solution between 270 ± 10 (mOsm/KG) with
28 human serum albumin were tested. PBS with human serum albumin at the same osmolality were used as
29 control. We then investigated the technical comparability on routine blastocyst manipulation, we tested
30 repeated direct thawing and repeated biopsies on the tested embryos in order to show the direct thawing
31 method can be applied to any possible routine IVF procedures. In the clinical phase, 20 patients were
32 recruited for the direct thawing compared to the conventional thawing of 96 patients during the same
33 study period. Cost-effectiveness analysis was performed to estimate the different between two
34 procedures.

35 Results: In the technical phase, we showed that all of the one-step media supported human vitrified
36 blastocyst thawing with 100% survival rate (N=52), even in the PBS control (N=11). And the revived
37 blastocysts are capable to re-expand comparable to conventional vitrified-thawing method. We also
38 demonstrate this single-direct rehydrated and thawed blastocyst in embryo culture medium survived
39 from direct thawing, trophoctoderm biopsy, second vitrified, second direct thawing with the second
40 biopsy indicated that this new method is comparable to conventional IVF procedures (N=13). Pilot clinical
41 study showed a higher implantation rate was also obtained from this direct thawing method compared to
42 conventional warming (61.9% VS 37.2%) and leading to healthy live birth (45% VS 36.8%). Our cost-
43 effectiveness analysis showed that the medium direct thawing could save 42% consumable cost for
44 patients and 90% of labor time.

45 Conclusions: We conclude that a regular embryo culture medium is comparable to the traditional thawing
46 method that potentially can save billions of dollars and thousands of labour hours each year in IVF setting
47 worldwide. We proved gradual cryoprotectant removal and gradual rehydration are not necessary for
48 human blastocyst thawing survivals. Using a regular embryo culture medium for thawing blastocysts
49 supported all clinical outcome equivalent to conventional thawing procedure. Our data also showed that
50 the method can cut down the cost and labour time in all IVF clinics worldwide.

51 Limitation: Only single Vitrification kit and embryo carrier were used in this study. The mechanism on how
52 the human blastocysts survived from one-step thawing remain unknown and the actual clinical power at
53 larger scale is yet to be resolved.

54

55 **Introduction**

56 One-third of couples worldwide experience infertility problems, and assisted reproductive technologies
57 (ARTs) are often the only means to achieve live birth. Among all ART procedures, frozen embryo transfer
58 (FET) is the most commonly performed assisted reproductive technology (ART) procedure since the first
59 frozen embryo transfer by slow freezing with live birth.¹ Up to now, it is estimated to exceed 2 million
60 FET cycles per year.² The stepwise removal of cytotoxic cryoprotectants and rehydration in serial osmotic
61 solutions to prevent osmotic shock has been a fundamental principle in cryobiology for decades.³ The
62 theory behind this approach is to gradually eliminate cytotoxic cryoprotectants and rehydrate the embryo
63 to minimize damage during the vitrification-thawing processes.⁴⁻⁵ The entire process is time-consuming
64 and labor-intensive in the IVF laboratory.

65 Thawing of vitrified human blastocyst requires fast warming rate, a sequence of thawing solutions, and
66 an experienced embryologist to secure the blastocyst survival rate. Currently, multiple solutions were
67 used during blastocyst thawing from the vitrified state. The central dogma in cryobiology that several
68 critical steps have to be fulfilled stepwise, including a high warm rate at 7700 °C/min (rapid-i, VitroLife)
69 serial dilution of cytotoxic permeable cryoprotectant, slightly increase permeable cryoprotectant
70 concentration for gradually rehydration of the blastocyst. It is believed that the above all factors are
71 crucial to secure a promising survival rate in the human embryos for both cleavage and blastocyst stages.
72 One-step thawing and rehydration without cryoprotectant in the thawing solution have never been
73 reported feasible in the human blastocyst so far. Very recently a study led by Liebermann *et al.* showed
74 that one-step thawing in 1M sucrose solution is possible with an encouraging higher ongoing pregnancy
75 rate,⁶ however; live birth has not been reported yet.

76 Vitrification now is the most common freezing method for blastocyst cryopreservation worldwide with
77 the compelling survival rate compared to slow freezing. Currently, although there are several
78 commercially available vitrification and thawing kits and numerous vitrification systems available. The
79 basic operation and manipulation are similar among all the systems and the survival rates are comparable.
80 Growing evidence shows that blastocyst is a very robust embryo stage that can survive from multiple
81 biopsies and under several rounds of vitrification-thaw cycles resulted in live birth.⁷ For a new technique
82 or technology to be recognized by in field professionals, there are two main issues have to be investigated
83 beforehand. They are the efficiency and safety. Vitrification-thawing method has been demonstrated a
84 better method over slow freezing in terms of embryo survival, implantation, pregnancy (in both
85 biochemical and clinical) and live birth rate. Up to now, long-term safety is yet to be proven but
86 preliminary outcomes on live birth data did not show any serious adverse events in terms of prenatal or
87 postnatal measurements.

88 Here, we demonstrate, for the first time, a direct thawing and rehydration using a regular embryo culture
89 medium, without any intermediate solution with cryoprotectant that supports 100% thawing survival rate
90 in a single step regardless of blastocyst grading. Surprisingly, our cohort trial showed improved live birth
91 outcomes. This faster, safer, and more cost-effective procedure has the potential to save billions of dollars
92 each year for patients undergoing IVF treatment worldwide.

93

MedRxiv

94 **Materials and methods**

95 IRB approval

96 The research report described herein has been carried out in accordance with The Code of Practice of the
97 Hong Kong Human Reproductive Technology Council and the Code of Ethics of the World Medical
98 Association (Declaration of Helsinki) for studies involving humans. This study was approved by the Hospital
99 research board of the Faculty of Medicine, Prince of Wales Hospital, The Chinese University of Hong Kong
100 (CREC Ref. No. 2010.432 and IRB/REC Ref. No. 2023.066). Written informed consent was obtained from
101 the patient for the study and publication.

102 Donated blastocysts for the technical phase research

103 All blastocysts used in this study had previously been donated and stored for research purposes at the
104 ART unit in department of obstetrics and gynaecology, The Chinese University of Hong Kong. All the
105 patients information were remained anonymous.

106 Blastocyst vitrification

107 All the donated blastocysts were originally from surplus embryos and later decided to be discarded.
108 Blastocysts were laser shrunk and then vitrified using Irvine vitrification kit (Product no.90188 or previous
109 version 90133-OS) on Rapid-i (VitroLife product no. 14406) vitrification straw for store until experiments
110 were performed. In brief, blastocysts were incubated in 50ul ES solution for ten minutes and then to VS
111 solution for less than 90 seconds. The blastocyst was then loaded on the straw and plunged into the
112 sleeve which was pre-cool in liquid nitrogen for at least two minutes prior to the straw insertion. The
113 sleeve was then sealed and store in LN tank for long term storage until use.

114 Embryo culture condition, time lapse imaging and blastocyst grading

115 Gardner's grading system were used on accessing blastocyst status based on morphology. All of the
116 embryos were cultured in VitroLife G-IVF plus medium (Product no. 10134) on the day of oocyte pick up
117 (OPU) and insemination. After fertilization checking normal fertilized zygotes were then transferred into
118 VitroLife G-TL plus medium (Product no. 10145) covered with Ovoil (product no. 10029) until day 5 or 6.
119 All embryo culture were incubated in either VitroLife EmrbyoScope or Cook Minc incubator at 37oC with
120 6% of CO₂, 5% O₂ and 6% of CO₂ and atmospheric pressure respectively.

121 Single step thawing in medium

122 Vitrified blastocysts were thawed directly into 1ml G-TL medium (VitroLife, product no. 10145), Single
123 step culture medium (Kitazato, SK-FCBS-50), Continuous single culture-NX complele medium (Fujifilm-
124 Irvine, 90168) and Globle Total medium (Life Global, LGGT-030) at 37oC in a Nunc organ dish (Corning
125 353037). Rapid-i embryo carrier was removed from LN tank and the sleeve was cut open. The embryo
126 containing straw were taken out from the sleeve and directly submerged into to 1 ml medium/tested
127 solution which were pre-incubated in Cook incubator in 6% CO₂ at 37°C overnight (for carbonate base
128 medium only) or pre-warm to 37 °C before use. After 1 minute, the blastocyst was transfer to fresh
129 VitroLife G-TL medium and incubate in time-lapse incubator for subsequent observation and experiments.
130 The thawing video is available in the supplementary video 1.

131 Conventional thawing using thawing kit

MedRxiv

132 Vitrification thawing kits were obtained from Irvine Scientific (90137-SO) and followed the user
133 instructions. The embryo containing Rapid-i sleeve was cut opened and the straw was taken out and
134 dipped in 1 ml TS solution at 37°C, immediately transferred to a 50 ul fresh TS solution for 2 minutes, DS
135 solution twice for 4 minutes and WS solution three times for total 9 minutes. The whole conventional
136 thawing method takes approximately 18-20 minutes.

137 Direct-thaw, trophectoderm biopsy, re-vitrify, re-thaw and re-biopsy

138 Trophectoderm biopsies and tubing of the tissue were performed by experienced embryologists in our
139 centre. RI Integra 3 manipulator and Saturn 5 laser system were used for the procedures. 5-10 cells of
140 the trophectoderm were taken from the blastocysts, biopsy needle (Cooper surgical, MBB-FP-SM-30) and
141 holding pipette (Cooper surgical, MPH-MED-30) were used. The biopsied blastocysts were then re-vitrified
142 under conventional method and then a second time thawing was performed. Re-thawed blastocysts were
143 observed under time lapse system until expended and then second biopsies were obtained.

144 The pilot direct thawed frozen embryo transfer and clinical outcome

145 20 Patients pending for FET were consented via hospital consent form satisfying the Hong Kong council
146 for human reproductive technologies and local regulations (Cap. 561). The blastocysts were thawed as
147 above mentioned in the VitroLife G-TL medium for embryo transfer. Cook Guardia embryo transfer
148 catheters (K-JETS-7019-ET) were used for the embryo transfer. Approximately 2-5 ul medium with the
149 embryo, medium column surrounded by two air gaps on each end and then the embryo was ejected gently
150 into the uterine cavity. A blood sample was taken 9 days after transfer of a blastocyst for human chorionic
151 gonadotropin (HCG) measurement to verify if pregnancy had occurred. In women with a positive
152 pregnancy test, a transvaginal ultrasound scan was performed 2 weeks later to determine the location of
153 pregnancy, the number of gestational sacs and fetal viability. The fetal heart beat was defined as a clinical
154 pregnancy. All of the cases were follow-up as standard practice under our hospital clinical protocol.

155 Statistical analysis

156 Comparison between categorical variables expressed in percentages (%) was performed with student t-
157 test for independent samples. Statistical significance was set at $P < 0.05$. Statistical analysis was performed
158 with the SPSS Statistics programme (version 27, IBM Corp., New York, USA).

159

MedRxiv

160 **Results**

161 **Technical Phase**

162 In this phase, we tested 76 blastocysts on direct thawing in 5 different media and showed the compatibility
163 on repeated direct thawing and biopsies. Figure 1 showed the schematic flow of this study.

164 **100% blastocysts survival rate under direct thawed in all tested media**

165 We tested 63 donated human blastocysts in total 5 different media (Figure 2b). We demonstrated 100%
166 survival rate when blastocysts thawed in all the media without stepwise procedures. This finding
167 challenges the central dogma of cryobiology on human blastocyst. The vitrified blastocyst-containing
168 carrier was immersed in a pre-warmed medium at 37 °C and incubated for one minute at a heat-top
169 workstation before being transferred to a time-lapse incubator for further observation. Time-lapse
170 imaging showed that all blastocysts survived the direct thawing procedure and were able to re-expand
171 (Figure 2a and suppl. Video 1). The re-expansion of the blastocoels, without the use of any invasive
172 markers, indicated their survival. Additionally, we tested all the commercially available one-step embryo
173 culture media alongside a Phosphate buffered saline (PBS) only control (N=11). Interestingly, all
174 blastocysts survived at an osmolality of 270 ± 10 mOsm/kg in the PBS solution.

175 **Direct thawing in medium can survive repeated thawing and biopsies**

176 Conventional ART treatments often involve multiple vitrify-thaw cycles, such as cleavage stage frozen-
177 thaw to day 5-6 blastocyst or for preimplantation genetic testing (PGT) biopsies. We tested 13 donated
178 blastocysts for vitrified-direct-thaw biopsies and re-vitrified, re-direct-thaw re-biopsy procedures. Figure
179 3a showed the schematic diagram on the repeated procedures. All blastocysts survived in double direct
180 thawing, and double biopsies showed that the direct thawing method is comparable to conventional
181 multiple vitrified-thawed procedures in modern ART laboratories (Figure 3b). In summary, the technical
182 phase demonstrated high survival and compatibility on IVF procedures.

183 **Clinical Phase**

184 **Direct thawing in medium supported pregnancy and live birth**

185 We then conducted a proof-of-concept trial on the direct thawing method, involving a cohort of 96
186 patients who were scheduled for frozen embryo transfers. Patients' demographics are showed in the table
187 1. 20 patients were recruited for direct thawing FET. Among 20 patients under direct thaw FET, 19 were
188 single embryo transfer (SET) while one was double embryo transfer (DET). In the conventional thawing
189 group with 76 patients, 74 with SET and 2 with DET. All of the thawed blasocysts were survived from both
190 of the thawing procedures. The implantation rate in the direct thawing group was significant higher at
191 61.9% (13 sacs/21 blastocysts) compared to the conventional method at 37.2% (29/78). Although the live
192 birth rate was also higher in the direct thawing group at 45% (9 LB/20 ETs) compared to 36.8% (28 LB/78
193 ETs) in the conventional thawing group, the difference was not statistically significant (Figure 4a). All nine
194 live births were healthy without any neonatal complications or abnormalities. This pilot trial
195 demonstrated that the direct thawing procedure in embryo culture medium is superior to the
196 conventional method in terms of pregnancy outcomes, and live birth rate. The miscarriage rate was also
197 non-significant between two groups.

198 **Cost-effectiveness analysis**

MedRxiv

199 The direct thawing procedure in embryo culture medium obviously can reduce lab cost and labour hour
200 per frozen embryo transfer. We conducted cost-effectiveness analysis and estimated a significant
201 reduction in labor costs of up to 90% and a 42% reduction in consumable costs per frozen embryo transfer
202 (Figure 4b).

203 **Discussion**

204 Multiple steps for blastocyst thawing is a regular procedure in ART laboratory, it involves several steps
205 first to remove of cytotoxic cryoprotectant and gradually re-hydrate the blastocyst from the vitrified state.
206 It is believed that the multi-step thawing procedure is a must to secure the survival rate, any deviation
207 from the procedure will jeopardize the rapid reviving blastocyst. Thawing of blastocysts by conventional
208 method required an experienced embryologist to manipulate the blastocyst in multiple solutions during
209 the thawing. The thwaing is time consuming and labor intensive. A single-step thawing method without
210 pipetting embryos from drop to drop can minimize the risk of losing the blastocyst during manipulation
211 and mimize the time in suboptimal culture condition. Furthermore, single-step thawing procedure
212 significantly shorten the time of thawing and less consumable used. A recent study led by Liebermann *et*
213 *al* demonstrated a single step thawing in 1.0M sucrose solution with higher ongoing pregnancy rate.⁶ The
214 research is a big leap for achieving one step thawing on human embryos but live birth data is not available
215 yet. Our data suggested that a simple single-step thawing procedure in a regular embryo culture medium,
216 without intermediate cryoprotectant with excellent survival rate leading to live births. Our data also
217 showed that blastocysts survived in all of the tested commercial media at the specific range of osmolality
218 from 270±10 including the PBS solution. Implying the essential human embryo culture medium provides
219 enough support for the direct thawing and rehydration. The direct thawing incubation time is also an
220 important factor for the blastocyst to survive; although we did not check the optimum time for the direct
221 thawing procedure due to limited number of donated blastocysts; it seemed 1 minute was the best for all
222 of the tested media.

223 Vitrification has been used in ART laboratory for more than two decades. Many groups tried to design a
224 faster and less technically challenging procedure for embryologists while aimed to retain equivalent or
225 better embryo outcome. Direct thawing for animal embryos are using for decades, however; has never
226 been used in human embryos given the ethical issue and limited donated materials for further research.
227 Previous one-step dilution was reported successfully in bovine blastocyst;⁷ however the thawing was not
228 purely single-step involving thawing from room temperature for 8-15 seconds and then in 37°C pre-warm
229 water bath; together with increased serum level in the medium. Also, the presence of opening on the
230 zona pellucida contributed to the survival. Compared to our study, although in much smaller sample size
231 due to the ethical and recruitment issues; we showed that a single dip in a solution at 270±10 mOsm/kg
232 in a second, either with or without opening on the zona pellucida, resulted in 100% survival rate. It has
233 been demonstrated that abnormal fertilized human oocytes with zero survival upon direct rehydration in
234 culture medium at 38°C,⁸ indicated that hypo-osmotic stress was detrimental to one cell embryo given
235 the large cell size.

236 RCT is needed to show the pregnancy outcome in a larger population. The limitation of this study is the
237 long term health effects after live birth is also not yet available. Long time follow up to reassure long term
238 technical safety from this new method.

239 **Conclusion**

MedRxiv

240 Taken together, we conclude that the direct thawing in an ordinary embryo culture medium is comparable
241 to the conventional-serial thawing method. The direct thawing procedure has the potential to increase
242 pregnancy rates and live birth rates while saving billions of dollars and thousands of labor hours each year
243 in IVF settings worldwide, especially in low resources area. We have demonstrated that gradual
244 cryoprotectant removal and gradual rehydration are not necessary for blastocyst thawing survival if the
245 osmolality is maintained within the specific range. The one-step, direct thawing procedure in an ordinary
246 embryo culture medium can significantly reduce costs and labor time in all IVF clinics worldwide.

247

MedRxiv

248 **Acknowledgments**

249 We would like to thank the Hong Kong Health and Medical Fund (Ref 18190321), from the Hong Kong
250 government, The Hong Kong Research Matching Grant (RMG01-8601386) to support this clinical research.

251 A Special gratitude to my IVF team members to support innovative research eventually could reduce their
252 burdens in the near future.

253 Appendix

254 Supplemental Video 1: Direct thawing method illustration and culturing time-lapse video (self-
255 explanatory);

256 **Data availability**

257 Our data are available with a signed data use agreement; please contact drdcyl16@cuhk.edu.hk.

258 The research report described herein has been carried out in accordance with The Code of Practice of the
259 Hong Kong Human Reproductive Technology Council and the Code of Ethics of the World Medical
260 Association (Declaration of Helsinki) for studies involving humans. This study was approved by the Hospital
261 research board of the Faculty of Medicine, Prince of Wales Hospital, The Chinese University of Hong Kong
262 (CREC Ref. No. 2010.432 and IRB/REC Ref. No. 2023.066). Written informed consent was obtained from
263 the patient for the study and publication.

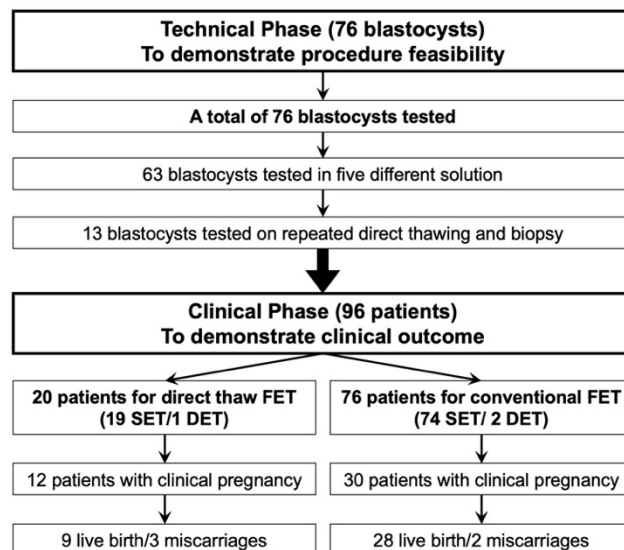
264 **Competing interests**

265 The authors declare no competing interests.

266

MedRxiv

Figure 1. Schematic flowchart of the study

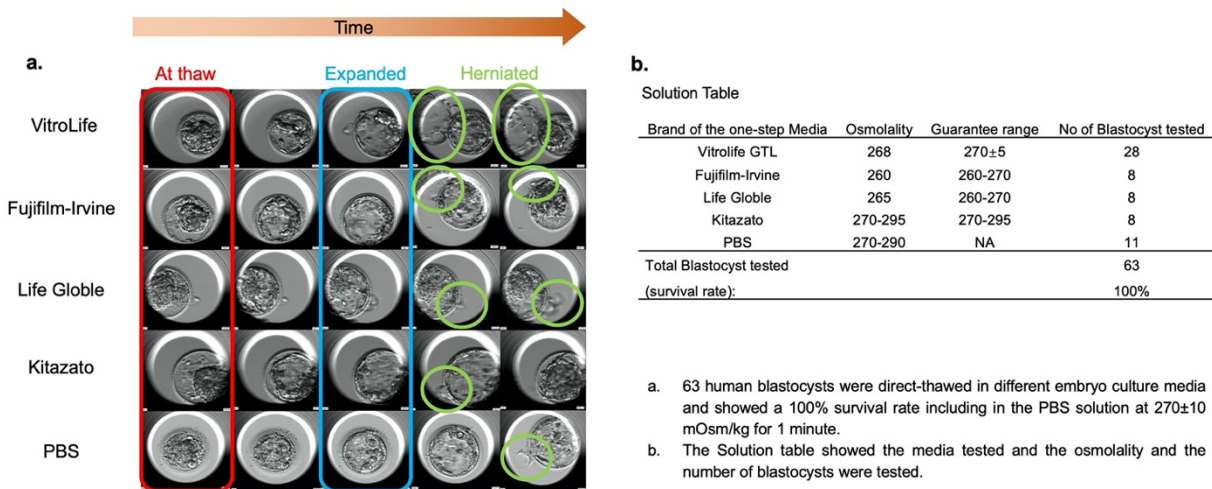


267

268

MedRxiv

Figure 2. Direct thawed embryo showed normal re-expansion and herniate features

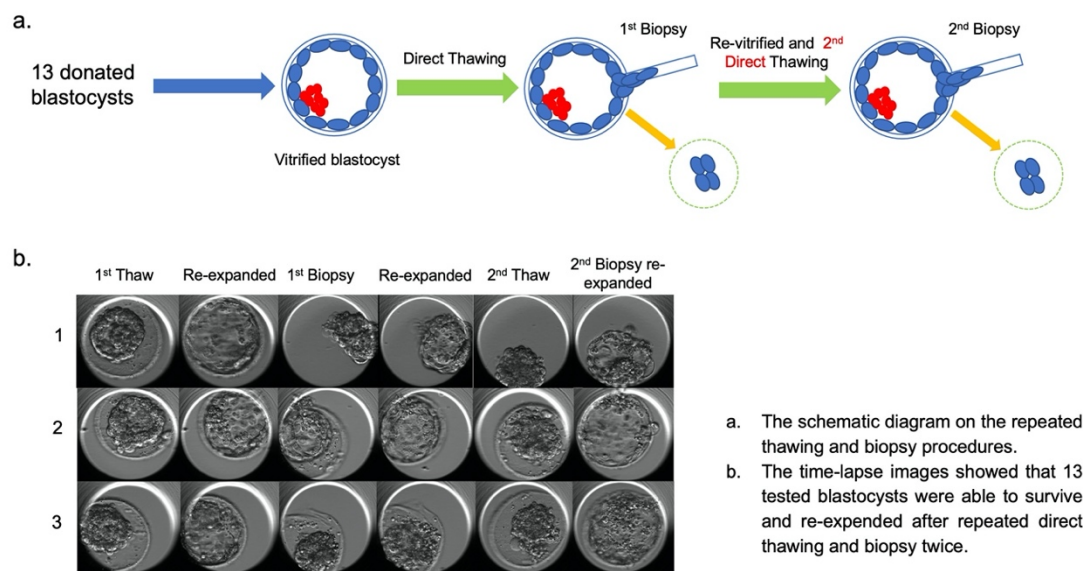


269

270

MedRxiv

Figure 3. Schematic diagram on repeated thawing and biopsy



271

272

MedRxiv

273 Table 1

274 Patient demographic data:

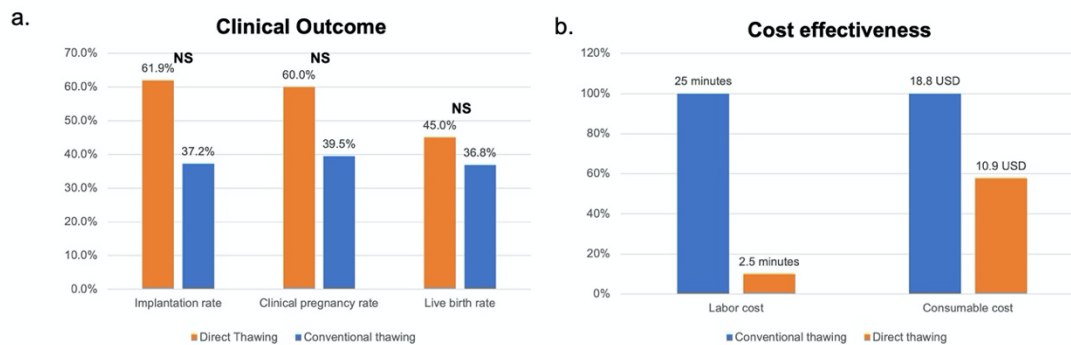
	Value	P Value
Age at the OPU date	35.39±0.74	.147 ^a
Number of embryos observed	1.65±0.19	.000 ^a
Diagnosis for infertility		
Primary	51 (58%)	
Secondary	37 (42%)	
Male Indication		
No male indication	36 (40.9%)	
Borderline Male Factor	6 (6.8%)	
Moderate/Severe Male Factor	45 (51.1%)	
Coital Dysfunction	1 (1.1%)	
Stimulation protocol		
Antagonist (Flexible)	39 (44.3%)	
Antagonist pre-treatment OC	44 (50%)	
Long Protocol/ Down Regulated	5 (5.7%)	
Number of follicles	14.31±0.96	.189 ^a
Number of OCC	13.13±1.18	
Number of fertilized oocytes	8.92±0.86	
Number of cleaved embryos	8.78±0.84	
Fertilization rate	69.0%	
Blastocyst formation rate	66.0%	
Pregnancy rate	46.8%	
Cumulative Pregnancy rate	68.8%	
Live Birth rate	31.9%	
Cumulative Live Birth rate	51.3%	

275 a Shapiro-Wilk Test for the Normal distribution

276 b Median for data that is not normally distributed

277

Figure 4. Clinical outcome and cost effectiveness analysis



- a. The clinical outcome between conventional thawing and direct thawing. Direct warming in a regular medium showed a higher implantation rate, clinical pregnancy rate, and live birth rate than the conventional thawing procedure but no significant difference.
- b. Cost-effectiveness analysis revealed that direct thawing saved 90% of labour hours and 42% less consumable cost compared to the conventional thawing procedure.

278

279

280 **References**

- 281 1. Trounson A, Mohr L: Human pregnancy following cryopreservation, thawing and transfer of an
282 eight-cell embryo. *Nature* 1983, 305:707-9.
- 283 2. Adamson GD, Z.-H.F., Dyer S, Chambers G, de Mouzon J, Ishihara O, Kupka M, Banker M, Jwa SC,
284 Elgindy E, Baker V. . ICMART preliminary world report 2018. 2022; Available from:
285 [https://www.icmartivf.org/wp-content/uploads/ICMART-ESHRE-WR2018-Preliminary-](https://www.icmartivf.org/wp-content/uploads/ICMART-ESHRE-WR2018-Preliminary-Report.pdf)
286 [Report.pdf](https://www.icmartivf.org/wp-content/uploads/ICMART-ESHRE-WR2018-Preliminary-Report.pdf)
- 287 3. Rall WF, Fahy GM: Ice-free cryopreservation of mouse embryos at -196 degrees C by
288 vitrification. *Nature* 1985, 313:573-5.
- 289 4. Kader AA, Choi A, Orief Y, Agarwal A: Factors affecting the outcome of human blastocyst
290 vitrification. *Reprod Biol Endocrinol* 2009, 7:99.
- 291 5. Wilmut I: The effect of cooling rate, warming rate, cryoprotective agent and stage of
292 development on survival of mouse embryos during freezing and thawing. *Life Sci* 1972,
293 11:1071-9
- 294 6. J. Liebermann, K. Hrvojevic, J. Hirshfeld-Cytron, R. Brohammer, Y. Wagner, A. Susralski, et al.
295 Fast and furious: pregnancy outcome with one-step rehydration in the warming protocol for
296 human blastocysts; *Reproductive BioMedicine Online* 2024 Vol. 48 Issue 4 Pages 103731
- 297 7. S. Zhang, K. Tan, F. Gong, Y. Gu, Y. Tan, C. Lu, et al.; Blastocysts can be rebiopsied for
298 preimplantation genetic diagnosis and screening; *fertil Steril* 2014 Vol. 102 Issue 6 Pages 1641-5
- 299 8. V. Isachenko, M. Montag, E. Isachenko, F. Nawroth, S. Dessolet and H. van der Ven
300 Developmental rate and ultrastructure of vitrified human pronuclear oocytes after step-wise
301 versus direct rehydration; *human Reproduction* 2004 Vol. 19 Issue 3 Pages 660-665
- 302 9. G. Vajta, C. N. Murphy, Z. Macháty, R. S. Prather, T. Greve and H. Callesen
303 In-straw dilution of bovine blastocysts after vitrification with the open-pulled straw method; *Vet*
304 *Rec* 1999 Vol. 144 Issue 7 Pages 180-1 Accession Number: 10097328