

# 1 **Estimating individual risk of catheter-associated urinary tract infections** 2 **using explainable artificial intelligence on clinical data**

3 Herdiantri Sufriyana,<sup>a,b</sup> Chieh Chen,<sup>c</sup> Hua-Sheng Chiu,<sup>d</sup> Pavel Sumazin,<sup>d</sup> Po-Yu Yang,<sup>e</sup> Jiunn-  
4 Horng Kang,<sup>f,g,\*</sup> Emily Chia-Yu Su<sup>a,g,h,\*</sup>

5 <sup>a</sup> Graduate Institute of Biomedical Informatics, College of Medical Science and Technology,  
6 Taipei Medical University, 250 Wu-Xing Street, Taipei 11031, Taiwan.

7 <sup>b</sup> Department of Medical Physiology, Faculty of Medicine, Universitas Nahdlatul Ulama  
8 Surabaya, 57 Raya Jemursari Road, Surabaya 60237, Indonesia.

9 <sup>c</sup> Department of Physical Medicine and Rehabilitation, Taipei Medical University Hospital, 252  
10 Wu-Xing Street, Taipei 11031, Taiwan.

11 <sup>d</sup> Texas Children's Cancer Center, Baylor College of Medicine, Houston, TX 77030, USA.

12 <sup>e</sup> School of Medicine, College of Medicine, Taipei Medical University, 250 Wu-Xing Street,  
13 Taipei 11031, Taiwan.

14 <sup>f</sup> Graduate Institute of Nanomedicine and Medical Engineering, Taipei Medical University, 250  
15 Wu-Xing Street, Taipei 11031, Taiwan.

16 <sup>g</sup> Research Center for Artificial Intelligence in Medicine, Taipei Medical University, 250 Wu-  
17 Xing Street, Taipei 11031, Taiwan.

18 <sup>h</sup> Clinical Big Data Research Center, Taipei Medical University Hospital, 252 Wu-Xing Street,  
19 Taipei 11031, Taiwan.

20 \* Corresponding author

Prof. Jiunn-Horng Kang, Graduate Institute of Nanomedicine and Medical Engineering, Taipei Medical University, 250 Wu-Xing Street, Taipei 11031, Taiwan. Tel: +886-2-66202589 Ext. 15600 E-mail: <a href="mailto:jhk@tmu.edu.tw">jhk@tmu.edu.tw</a>	Prof. Emily Chia-Yu Su, Graduate Institute of Biomedical Informatics, College of Medical Science and Technology, Taipei Medical University, 250 Wu-Xing Street, Taipei 11031, Taiwan. Tel: +886-2-66202589 Ext. 10931 E-mail: <a href="mailto:emilysu@tmu.edu.tw">emilysu@tmu.edu.tw</a>
---	--

21 Subject section: Infection Control and Hospital Epidemiology

22 Word counts: abstract (301 words), main text (6306 words)

23

## 1 Abstract

2 **Background:** Catheter-associated urinary tract infections (CA-UTIs) significantly increase  
3 clinical burdens. Identifying patients at high-risk of CA-UTIs is crucial in clinical practice. In  
4 this study, we developed and externally validated an explainable, prognostic prediction model of  
5 CA-UTIs among hospitalized individuals receiving urinary catheterization. **Methods:** We  
6 applied a retrospective cohort paradigm to select data from a clinical research database covering  
7 three hospitals in Taiwan. We developed a prediction model using data from two hospitals and  
8 used the third hospital's data for external validation. We selected predictors by a multivariate  
9 regression analysis through applying a Cox proportional-hazards model. Both statistical and  
10 computational machine learning algorithms were applied for predictive modeling: (1) ridge  
11 regression; (2) decision tree; (3) random forest (RF); (4) extreme gradient boosting; and (5)  
12 deep-insight visible neural network. We evaluated the calibration, clinical utility, and  
13 discrimination ability to choose the best model by the validation set. The Shapley additive  
14 explanation was used to assess the explainability of the best model. **Results:** We included  
15 122,417 instances from 20-to-75-year-old subjects with multiple visits ( $n=26,401$ ) and multiple  
16 orders of urine catheterization per visit ( $n=35,230$ ). Fourteen predictors were selected from 20  
17 candidate variables. The best prediction model was the RF for predicting CA-UTIs within 6 days.  
18 It detected 97.63% (95% confidence interval [CI]: 97.57%, 97.69%) CA-UTI positive, and  
19 97.36% (95% CI: 97.29%, 97.42%) of individuals that were predicted to be CA-UTI negative  
20 were true negatives. Among those predicted to be CA-UTI positives, we expected 22.85% (95%  
21 CI: 22.79%, 22.92%) of them to truly be high-risk individuals. We also provide a web-based  
22 application and a paper-based nomogram for using the best model. **Conclusions:** Our prediction  
23 model was clinically accurate by detecting most CA-UTI positive cases, while most predicted  
24 negative individuals were correctly ruled out. However, future studies are needed to  
25 prospectively evaluate the implementation, validity, and reliability of this prediction model  
26 among users of the web application and nomogram, and the model's impacts on patient outcomes.

27 **Keywords:** catheter-associated urinary tract infection, clinical risk prediction, machine learning,  
28 explainable artificial intelligence, nomogram.

## 1 **Introduction**

2 Catheter-associated urinary tract infections (CA-UTIs) are among the most common  
3 healthcare-associated infections. UTIs contribute 12.19% to health care-associated infections, of  
4 which 70% of them are CA-UTIs [1]. Such infections occur when bacteria ascend the urinary  
5 tract. Biofilm formation on the catheter surface can harbor micro-organisms, and cause them to  
6 be resistant to antibiotic treatment. CA-UTIs significantly increase healthcare costs due to  
7 prolonging hospital stays, and requiring additional diagnostic tests and relevant treatments.  
8 Overuse of antibiotics to treat CA-UTIs can further lead to increased antimicrobial resistance.  
9 CA-UTIs can cause serious complications like sepsis and increased mortality, especially in  
10 vulnerable populations such as the elderly or those with comorbid conditions. Preventing CA-  
11 UTIs involves minimizing the use of catheters, using aseptic techniques for catheter insertion and  
12 maintenance, and removing catheters as soon as clinically feasible. Education and training of  
13 healthcare workers in catheter management are crucial.

14 A high-risk subpopulation of this condition is patients in intensive care units (ICUs) [2].  
15 CA-UTIs increased the length of stay in ICUs by 1.59 days and the mortality risk in ICUs by  
16 15% (95% confidence interval [CI]: 3%, 28%). However, 72% of CA-UTIs occur in patients  
17 outside of ICUs. Therefore, preventing CA-UTIs in all hospitalized settings is crucial. Ongoing  
18 research is essential to understanding the evolving epidemiology of CA-UTIs and developing  
19 new prevention and treatment strategies. Previous studies used multidisciplinary teams, daily  
20 catheter reviews, protocol and procedural changes, electronic order sets, catheter insertion and  
21 removal reminders, audits and feedback, and education to prevent CA-UTIs [3]. However, these  
22 interventions are systemic in nature, but lack personalization. Therefore, identifying patients at  
23 high-risk of CA-UTIs in all hospitalized settings is essential, particularly for a specific  
24 preventive strategy of CA-UTIs at the individual level, e.g., antimicrobial catheter usage.

25 Only a few prediction models have been developed on relevant issues. Two models for  
26 predicting CA-UTIs were developed among patients in ICU settings for neurologic cases only,  
27 applying statistical and computational machine learning (ML) algorithms. The first ML model  
28 achieved an area under curve (AUC) of the receiver operating characteristics (ROC) of 0.888  
29 (95% CI: 0.772, 1.000) by a validation set [4]. Meanwhile, the second ML model achieved an  
30 AUC-ROC of 0.920 (95% CI: 0.786, 0.918) by a training set [5]. Unfortunately, no previous  
31 study developed and validated a prediction model of CA-UTIs among all hospitalized population.

1           This risk prediction is expected to pave the way to a more-effective approach for  
2 combating CA-UTIs. Furthermore, the model's explainability may guide reliable decision-  
3 making by reducing critical risk factors. In this study, we aimed to develop and externally  
4 validate an explainable, prognostic prediction model of CA-UTIs among hospitalized individuals  
5 receiving urinary catheterization.

## 6 **Methods**

### 7 *Study design*

8           We applied a retrospective cohort paradigm to select data from the Taipei Medical  
9 University (TMU) Clinical Research Database (TMUCRD) (access approval no.: A202206008).  
10 This integrated research database consists of clinical data from deidentified and curated  
11 electronic medical records (EMRs) in three hospitals: (1) Shuang Ho hospital; (2) TMU hospital,  
12 and (3) Taipei Municipal Wanfang hospital. The database period is up to 23 years (1998 to 2021)  
13 and covers 4.1 million patients across Taiwan. The Taipei Medical University Joint Institutional  
14 Review Board gave ethical approval for this work (TMU-JIRB no.: N202209030).

15           Data of a subject were selected for our cohort if they met the following criteria: (1) the  
16 subject's age ranged from 20 to 75 years, and (2) urinary catheterization was prescribed for the  
17 individual. We included all data from the time of catheterization initiation to 48 h post-removal,  
18 a period henceforth referred to as an 'episode'. In instances where a catheterization episode  
19 concluded within one day or less before commencement of a subsequent episode for the same  
20 subject during a hospital visit, these episodes were amalgamated into a single episode. This  
21 process was recursively applied until the interval between episodes exceeded one day or no  
22 further catheterization occurred. The observational unit was each day within a catheterization  
23 episode. A case of a CA-UTI was identified if (1) a diagnosis of UTI and/or an order for a  
24 urinary bacterial culture was recorded, and (2) there was no concurrent diagnosis of pneumonia.  
25 Both criteria had to be met within the period of catheterization during hospitalization.

26           Our prediction model was developed to aid decision-making in preventing CA-UTIs. To  
27 achieve this objective, we aimed to establish an optimal risk probability threshold. Our approach  
28 in determining this threshold prioritized minimizing the rate of false positives (targeting an  
29 approximately 10% false positive rate, FPR), as we considered false positives more detrimental  
30 than false negatives in the context of this study due to potential iatrogenic harm. While we

1 anticipated this threshold to yield an approximate specificity of 90%, our foremost concern was  
2 to ensure significant clinical utility. This utility was assessed by evaluating the net benefit, which  
3 was higher than scenarios where all patients were universally treated or categorized as positive  
4 (treat all) or not treated or as negative (treat none). In addition to this, we also focused on  
5 evaluating the model's calibration and discrimination capabilities to ensure that the model  
6 provided confident predictions and accommodated a broad range of thresholds.

### 7 *Predictive modeling*

8 We pre-determined 20 candidate predictors based on a literature review, which were  
9 hypothetically considered to be the candidate predictors of outcomes including: (1) age group  
10 ( $\leq 50$ / $>50$  to  $65$ / $>65$  years old) [6]; (2) ICU stay  $\geq 10$  days (no/yes) [2]; (3) duration of  
11 catheterization  $\geq 6$  days (no/yes) [6]; (4) hospital stay  $\geq 4$  days (no/yes) [7, 8]; (5) previous  
12 catheterization (*n*) [8]; (6) sex (female/male) [8-11]; (7) type-2 diabetes mellitus (T2DM) no/yes  
13 [8, 10, 12]; (8) immobilization (no/yes) [12]; (9) indication of catheterization (surgical/medical)  
14 [10, 12]; (10) drainage system [10, 11]; (11) DM-related factors (no/yes) [13]; (12) poor nutrition  
15 (no/yes) [9, 10]; (13) fecal incontinence medication (no/yes) [9]; (14) impaired immune function  
16 (no/yes) [9]; (15) serum creatinine  $>2$  mg/dL (no/yes) [9, 10]; (16) sodium-glucose co-  
17 transporter (SGLT)-2 inhibitors (no/yes) [14]; (17) urological issues (no/yes) [15, 16]; (18)  
18 previous UTI diagnosis  $>2$  times per six months or  $>3$  times per year (no/yes) [17]; (19)  
19 neurological issues (no/yes) [18]; and (20) antibiotic drugs last seven days (no/yes) [10]. Data  
20 availability of these candidate predictors was identified after partitioning our data. In addition,  
21 the duration of catheterization as a candidate predictor was defined as days from the start of  
22 urinary catheterization to the day of prediction.

23 To conduct data partition, we used data from the TMU and Shuang Ho hospitals for the  
24 development set and those from the Taipei Municipal Wanfang hospital for the test set.  
25 Subsequently, we randomly split the development set into training and validation sets by an 80:20  
26 ratio. The downstream analysis only used the training set, except when internally (i.e., by the  
27 validation set) and externally (i.e., by the test set) validating a prediction model.

28 Before predictor selection, we unselected a candidate predictor with (1) unavailable data,  
29 (2) perfect separation problem, and (2) missing not at random (MNAR). A categorical candidate  
30 predictor was considered to perfectly separate the outcome if there were no samples in any

1 combinations of categories between the candidate predictor and the outcome. With the exception  
2 of data generation that allowed perfect separation (e.g., no CA-UTI sample among patients  
3 without urine catheterization), it was considered a sampling error (simply occurring by chance).  
4 A predictive modeling algorithm may falsely choose such a candidate predictor as an important  
5 predictor. Meanwhile, a candidate predictor was considered MNAR if there was a significant  
6 association between its missing value (not missing/missing) and the outcome  
7 (negative/positive/missing). For a numerical candidate predictor, we also identified outliers.  
8 However, we removed no samples with outliers. Instead, we assigned missing values to the  
9 outliers, assuming that these might be a random error when the data were input during patient  
10 care. Subsequently, we reconsidered if a candidate predictor was MNAR.

11 Furthermore, if a candidate predictor was unselected and had either  $>1$  indicators or a  
12 numerical indicator, we substituted it with any of its indicators. They were also unselected if they  
13 fulfilled the above criteria for candidate predictor selection. Eventually, multiple imputations by  
14 a chained equation were applied to missing values of the selected candidate predictors and the  
15 outcome and its onset. An outcome onset was determined by how many days a patient was  
16 diagnosed with a CA-UTI after the start of a urinary catheterization. Although we included the  
17 outcome and its onset for imputing candidate predictors, we did not use the imputed values of the  
18 outcome or its onset. Only data with a non-missing outcome were used. We included missing  
19 values when computing the outcome probabilities for inverse probability weighting in the  
20 predictive modeling. In addition, the numerical candidate predictors were also standardized by  
21 their respective average and standard deviation (SD), which were computed without outliers. A  
22 numerical predictor standardization utilized the training set's corresponding average and SD in  
23 the validation and test sets.

24 For predictor selection in our study, we employed Cox proportional-hazards modeling for  
25 both the univariate and multivariate regression analyses. Initially, a univariate regression analysis  
26 was conducted to ascertain associations between each candidate predictor and the outcome of  
27 interest. For the multivariate regression analysis, we assessed interrelationships among selected  
28 candidate predictors through either a linear or logistic regression analysis. A variable was  
29 designated as a covariate for a particular candidate predictor if it demonstrated an association  
30 with both the candidate predictor and the outcome in the multivariate analysis. Given the  
31 hypothesized causal direction from the candidate predictor to the outcome, the identified

1 covariates were categorized as either confounders or mediators based on the principles of  
2 structural causal modeling. Consequently, in the multivariate regression, a candidate predictor's  
3 hazard ratio (HR) might represent either its direct effect or total effect, excluding the effect of  
4 covariates included in this study.

5         These predictor selection procedures were also applied across various combinations of  
6 outcome onset spans and ranges. For instance, a span of 3 days and a range of 15 days imply  
7 assessing the outcome every three days for up to 15 days. We considered 1, 3, and 7 days for  
8 outcome evaluations, with corresponding outcome onset ranges of 5 to 90 days. The minimum  
9 range (5 days) ensured at least five groups of outcome onset for each span, which was deemed  
10 adequate for Cox proportional-hazards modeling. The maximum range (90 days) was set as the  
11 acceptable upper limit of follow-up to identify positive CA-UTI cases. The selection of a  
12 combination of span and onset was based on the minimum sample size criterion among outcome  
13 onset groups for each span, with preference given to the largest minimum sample size. The  
14 combination with the longest range was chosen in case of a tie.

15         Given the extensive application of predictor selection across various combinations of  
16 outcome onsets and spans, the possibility of a multiple-testing effect was acknowledged. To  
17 address this, we corrected  $p$ -values of association tests by the Benjamini-Hochberg method,  
18 thereby controlling the false discovery rate. A candidate predictor was selected only if it showed  
19 a significant association with the outcome after adjusting for covariates (if any), signified by a  
20 corrected  $p$ -value of  $\leq 0.05$ . We only utilized predictors selected via the multivariate regression  
21 analysis to develop the prediction models. The models were tailored to follow-up within the  
22 selected range and span. For example, with a chosen range of 15 days and a span of 3 days, four  
23 models were developed to predict the outcome without and at specific onset intervals (days 1 to 3,  
24 6, 9, and 12). In cases where a categorical predictor had more than two categories, it was  
25 transformed into multiple predictors, excluding the reference category.

26         To construct the prediction models, we applied five ML algorithms to develop a  
27 prediction model: ridge regression (RR), decision tree (DT), random forest (RF), extreme  
28 gradient boosting (XGBoost), and deep-insight visible neural network (DI-VNN). These  
29 algorithms were selected for their diverse approaches and various handling of data characteristics,  
30 as well as their hyperparameters (Table S1). RR, a statistical ML algorithm, is notable for its  
31 linear approach and L2-norm regularization. In contrast, DT, RF, XGBoost, and DI-VNN are

1 computational algorithms that primarily address non-linearity. DT operates by stepwise  
2 classification based on predictor importance, whereas RF aggregates multiple DTs for outcome  
3 classification. XGBoost sequentially refines DTs to minimize misclassification rates, and DI-  
4 VNN, a deep learning algorithm, includes inter-predictor relationships in its predictions, a  
5 feature not commonly found in other ML approaches. The predictive performance of models  
6 developed with these algorithms varied depending on the data characteristics. Therefore, we  
7 conducted a robust statistical analysis to compare these models and selected the most effective  
8 for predictive modeling in our study.

### 9 *Statistical analysis*

10 We assessed the respective calibration, clinical utility, and discrimination ability of the  
11 models to robustly evaluate them. We screened the well-calibrated models that demonstrated a  
12 higher net benefit relative to the treat-all and treat-none scenarios (see Study design) and a better  
13 discriminative ability than a random guess. We chose a prediction model with the best  
14 discriminative ability among the models that passed the screening. The explainability of the best  
15 model was also evaluated. As mentioned above, all evaluation metrics were assessed from the  
16 validation set to choose the best model. We also showed the evaluation results based on the test  
17 set for the best model to ensure the robustness of its predictive performance; hence, it allowed  
18 the model to be deployed in real-world settings. We inferred the interval estimate (i.e., the 95%  
19 CI) for each evaluation metric by 30-time bootstrapping. We shared the programming codes for  
20 all analyses in this study ([https://github.com/herdiantrisufriyana/colab\\_uti](https://github.com/herdiantrisufriyana/colab_uti)), including predictive  
21 modeling.

22 To assess the model calibration, we binned the predicted probability from 0 to 1 by 0.1  
23 and inferred the point and interval estimates of the true probabilities for each bin. We fitted a  
24 regression line over the point estimates on the calibration plot for descriptive purposes. With this  
25 regression, a prediction model had a better calibration if the intercept and slope interval estimates  
26 respectively included 0 and 1, or their point estimates approached those numbers. The intercept  
27 describes if the predicted probabilities under- or over-estimated the true probabilities, implying  
28 whether a prediction model covers all of the true predictors. Meanwhile, the slope describes if  
29 the increment of the predicted probabilities reflects that of the true probabilities, implying if a  
30 prediction model correctly uses information from the available predictors to classify an outcome.



1 In addition, we also computed the Brier score, i.e., the root-mean-square error between the  
2 predicted probabilities and the true values of either positive (=1) or negative CA-UTIs (=0). The  
3 best calibrated model was considered one with the lowest Brier score.

4 Nevertheless, the calibration plot indicated the optimal range of thresholds by which a  
5 higher predicted probability classified a sample as CA-UTI positive. This plot also characterized  
6 a prediction model in terms of how to use it in clinical settings. The optimal range was  
7 considered when assessing a prediction model's clinical utility and discrimination ability.

8 Clinical utility was evaluated by the net benefit, which was computed for each of the  
9 predicted probabilities from 0 to 1 by 0.01 increments. Within the optimal range of thresholds in  
10 terms of calibration, a prediction model is expected to demonstrate net benefits higher than the  
11 reference, i.e., the corresponding net benefits using either a treat-all or treat-none scenario. We  
12 also identified the optimal range of thresholds with considerably higher net benefits than the  
13 reference, and then re-evaluated the calibration within that optimal range.

14 Before assessing the discrimination ability using a specific threshold, we compared the  
15 discrimination abilities among the models by the AUC-ROC. A prediction model's  
16 discrimination ability was considered significantly better than a random guess if the AUC-ROC  
17 interval was  $>0.5$ . Among the models that passed this criterion, the model with the best  
18 discriminative ability had the highest AUC-ROC.

19 After choosing the best model, we assessed the discrimination ability using a specific  
20 threshold for the best model. Using the validation set, we identified which threshold resulted in  
21 ~90% specificity or achieved the expected clinical utility. Four metrics were computed from  
22 prediction results made by the chosen threshold using the test set: (1) sensitivity, (2) specificity,  
23 (3) positive predictive value (PPV), and (4) negative predictive value (NPV).

24 We assessed the explainability of the models with the Shapley additive explanation  
25 (SHAP) value. We computed these values and interpreted their meaning at both the population  
26 and individual levels by beeswarm and waterfall plots. Both estimated each predictor's impact on  
27 the model's output. At the individual level, we selected four groups of samples that represented  
28 true positives, false negatives, false positives, and true negatives. We selected a sample from  
29 each distinguished cluster of samples for each group. To determine the clusters, we reduced  
30 predictors into two principal components (PCs) with the highest proportions of variance  
31 explained. Subsequently, we applied  $k$ -mean clustering by the PCs with  $k$  centers such that all

1 visible clusters were separated by classifying one or more clusters. A sample closest to each  
2 centroid was taken for each of the groups. Eventually, we expect to learn how to use and  
3 improve the best model in the future according to model's explainability.

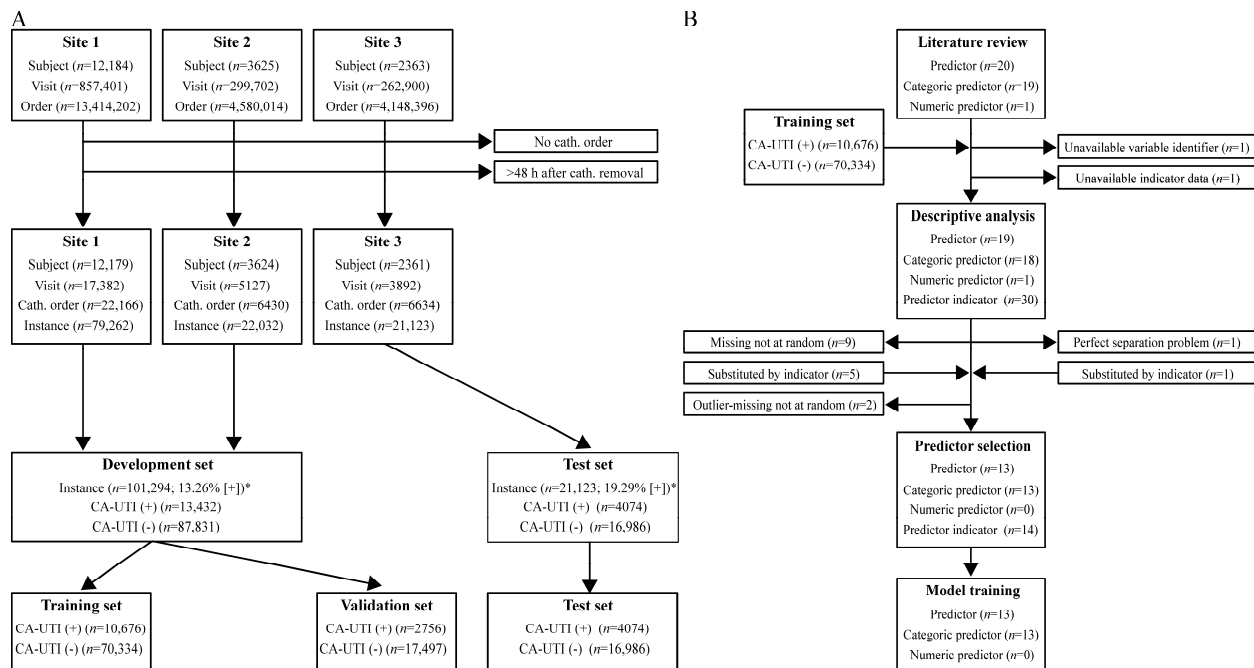
4 We also provided a web application and a nomogram to use the best model. For the latter,  
5 we followed a protocol for creating an algorithm-agnostic nomogram [19]. This nomogram  
6 allows a paper-based prediction, increasing the accessibility of the best prediction model,  
7 including one developed by a complex ML algorithm.

8

## 9 **Results**

### 10 *Baseline characteristics*

11 We identified 20-to-75-year-old subjects ( $n=18,164$ ) with one or more visits ( $n=26,401$ )  
12 to the three hospitals and with one or more orders of urinary catheterization per visit ( $n=35,230$ )  
13 (Figure 1A). This selection resulted in 122,417 instances for developing and validating our  
14 prediction models, i.e., days of prediction within all catheterization episodes. Subjects visiting  
15 Taipei Municipal Wanfang hospital constituted 20.85% of the instances, i.e., the test set, while  
16 the remaining subjects were from Shuang Ho and TMU hospitals, i.e., the development set. The  
17 prevalence of CA-UTIs in the test set was considered higher than that in the development set  
18 ( $n=13,432/101,294$  [19.29%] vs.  $n=4074/21,123$  [13.26%]), which was a good challenge to test  
19 the robustness of the best model. Eventually, we randomly split the development set into the  
20 training and validation sets ( $n=10,676/81,010$  [79.98%] vs.  $n=2756/17,497$  [20.02%]).



1  
2 Figure 1. Data selection: (A) observations; and (B) predictors. Site 1, 2, and 3 are respectively the Shuang Ho hospital, the TMU  
3 hospital, and the Taipei Municipal Wanfang hospital. \*, including missing values; Cath., catheterization; CA-UTI, catheter-  
4 associated urinary tract infection.

5 We identified 30 indicators for 19 candidate predictors in the training set (Table S2;  
6 Figure 1B). We unselected the duration of catheterization  $\geq 6$  days since it perfectly separated the  
7 outcome. While we had substituted this candidate predictor by its indicator, i.e., duration of  
8 catheterization in days, we also unselected this candidate predictor since it was MNAR after  
9 assigning its outliers as missing. The nine other candidate predictors were also MNAR, some of  
10 which were substituted by five indicators, i.e.: (1) T2DM (substituted by T2DM diagnosis only,  
11 excluding DM medication); (2) indication of catheterization (no substitution); (3) DM-related  
12 factors (substituted by either hypertension or DM with nephropathy); (4) poor nutrition (the  
13 remaining indicators were also MNAR before or after assigning their outliers as missing); (5)  
14 fecal incontinence medication (its indicators were also MNAR); (6) impaired immune function  
15 (substituted by either human immunodeficiency virus [HIV] or malignant neoplasms); (7) serum  
16 creatinine  $>2$  mg/dL (its numerical indicator was also MNAR after assigning its outliers as  
17 missing); (8) SGLT-2 inhibitors (no substitution); and (9) antibiotic drugs last seven days (no  
18 substitution). The previous catheterization was unselected since it was MNAR after assigning its  
19 outliers as missing. Eventually, thirteen candidate predictors passed the preliminary check to be  
20 included in predictor selection.

1 Table 1. Baseline characteristics of training set.

Variable		CA-UTI	
		No (n=70,334)	Yes (n=10,676)
Age group	≤50 years old, % (n)	41.79 (29,392)	20.7 (2210)
	>50 to 65 years old, % (n)	39.91 (28,069)	50.97 (5442)
	>65 years old, % (n)	18.3 (12,873)	28.33 (3024)
ICU stay ≥10 days	No, % (n)	99.37 (69,894)	98.3 (10,495)
	Yes, % (n)	0.63 (440)	1.7 (181)
Hospital stay ≥4 days	No, % (n)	65.7 (46,208)	31.25 (3336)
	Yes, % (n)	34.3 (24,126)	68.75 (7340)
Sex	Female, % (n)	58.49 (41,135)	52.34 (5588)
	Male, % (n)	41.51 (29,199)	47.66 (5088)
T2DM diagnosis	No, % (n)	80.77 (56,808)	62.09 (6629)
	Yes, % (n)	19.21 (13,511)	37.91 (4047)
Immobilization	No, % (n)	97.36 (68,478)	92.94 (9922)
	Yes, % (n)	2.64 (1856)	7.06 (754)
Hypertension	No, % (n)	78.28 (55,055)	64.89 (6928)
	Yes, % (n)	21.7 (15,264)	35.11 (3748)
DM with nephropathy	No, % (n)	99.16 (69,746)	97.09 (10,365)
	Yes, % (n)	0.81 (573)	2.91 (311)
HIV	No, % (n)	99.81 (70,200)	99.65 (10,639)
	Yes, % (n)	0.17 (119)	0.35 (37)
Malignant neoplasms	No, % (n)	83.78 (58,923)	77.26 (8248)
	Yes, % (n)	16.2 (11,396)	22.74 (2428)
Urological issues	No, % (n)	92.46 (65,029)	79.15 (8450)
	Yes, % (n)	7.52 (5290)	20.85 (2226)
Previous UTI diagnosis >2 times per six months or >3 times per year	No, % (n)	97.57 (68,622)	94.55 (10,094)
	Yes, % (n)	0.52 (368)	3.61 (385)
Neurological issues	No, % (n)	92.72 (65,215)	81.73 (8725)
	Yes, % (n)	7.26 (5104)	18.27 (1951)

2 The total percentage (%) and number (n) may not be respectively 100% and the same with the number of an outcome category,  
 3 because it includes data with missing values. CA-UTI, catheter-associated UTI; DM, diabetes mellitus; HIV, human  
 4 immunodeficiency virus; ICU, intensive care unit; T2DM, type 2 DM; UTI, urinary tract infection.

5 In the training set (Table 1), most CA-UTI positives were characterized by the >50-to-65-  
 6 year-old age group, ICU stay <10 days, hospital stay ≥4 days, female, or negative for other  
 7 selected candidate predictors. Similar characteristics were found among CA-UTI negatives,  
 8 except most were characterized by the ≤50-year-old age group or hospital stay <4 days. Unlike  
 9 the validation set with similar characteristics to those in the training set, CA-UTI positives and  
 10 negatives in the test set were characterized by the >50-to-65-year old age group or hospital stay  
 11 ≥4 days (Table S3).

## 12 *Predictive performance and explainability*

13 We identified an outcome onset span and range of 3 and 15 days, of which the minimum  
 14 sample size was the largest among other combinations (Figure S1A). All of the selected  
 15 candidate predictors were significantly associated with CA-UTIs in the univariate regression  
 16 analyses (Table 2; Figures S1B to S1M). For each candidate predictor, we identified associations

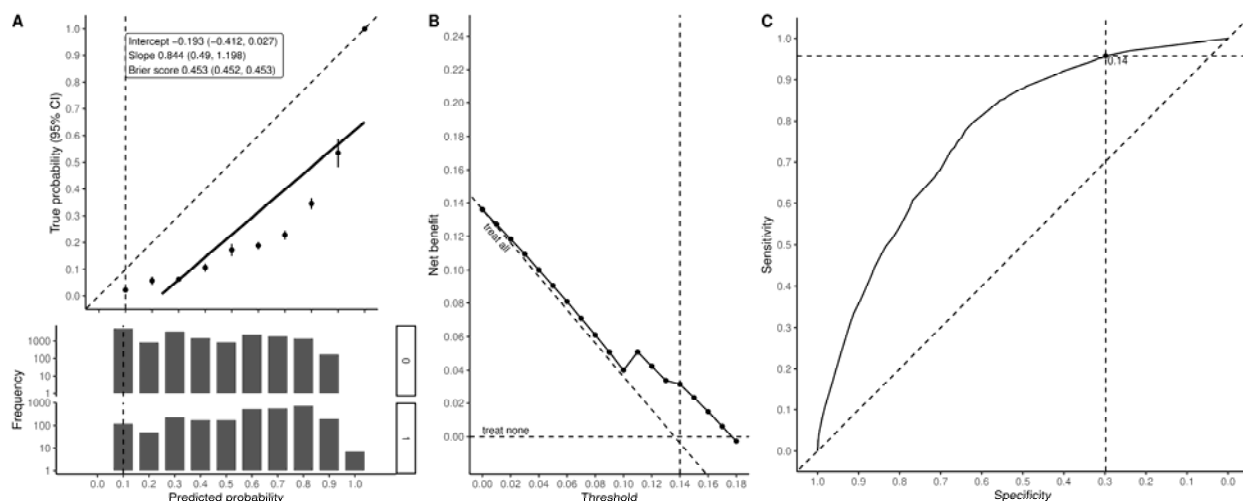
1 with other candidate predictors (Table S4). After adjustment with other predictors as covariates,  
 2 the effect sizes of most candidate predictors were significantly smaller on the outcome, except  
 3 ICU stay  $\geq 10$  days, HIV, sex male, hypertension, and malignant neoplasms. Nevertheless, by  
 4 these multivariate regression analyses, we identified significant associations between each of the  
 5 selected candidate predictors and CA-UTIs.

6 Table 2. Associations between each of the selected predictors and the outcome.

Candidate predictor	Association with CA-UTIs by HR (95% CI; <i>p</i> -value*)	
	Unadjusted	Adjusted†
Age group >50 to 65 years old	1.981 (1.874, 2.094; <0.001)	1.490 (1.406, 1.579; <0.001)
Age group >65 years old	2.411 (2.269, 2.563; <0.001)	1.590 (1.487, 1.700; <0.001)
ICU stay $\geq 10$ days	1.950 (1.656, 2.295; <0.001)	1.896 (1.611, 2.232; <0.001)
Hospital stay $\geq 4$ days	2.861 (2.734, 2.995; <0.001)	2.324 (2.216, 2.437; <0.001)
Sex male	1.089 (1.044, 1.136; <0.001)	0.844 (0.808, 0.881; <0.001)
T2DM diagnosis	1.996 (1.911, 2.084; <0.001)	1.397 (1.332, 1.466; <0.001)
Immobilization	2.242 (2.069, 2.429; <0.001)	1.308 (1.204, 1.422; <0.001)
Hypertension	1.610 (1.541, 1.683; <0.001)	0.942 (0.895, 0.992; 0.023)
DM with nephropathy	2.844 (2.516, 3.214; <0.001)	1.522 (1.337, 1.733; <0.001)
HIV	2.066 (1.475, 2.893; <0.001)	2.292 (1.634, 3.215; <0.001)
Malignant neoplasms	1.126 (1.069, 1.185; <0.001)	0.828 (0.786, 0.873; <0.001)
Urological issues	2.830 (2.689, 2.978; <0.001)	2.154 (2.039, 2.275; <0.001)
Previous UTI diagnosis >2 times per six months or >3 times per year	4.097 (3.668, 4.577; <0.001)	2.115 (1.882, 2.377; <0.001)
Neurological issues	2.244 (2.126, 2.368; <0.001)	1.414 (1.331, 1.501; <0.001)

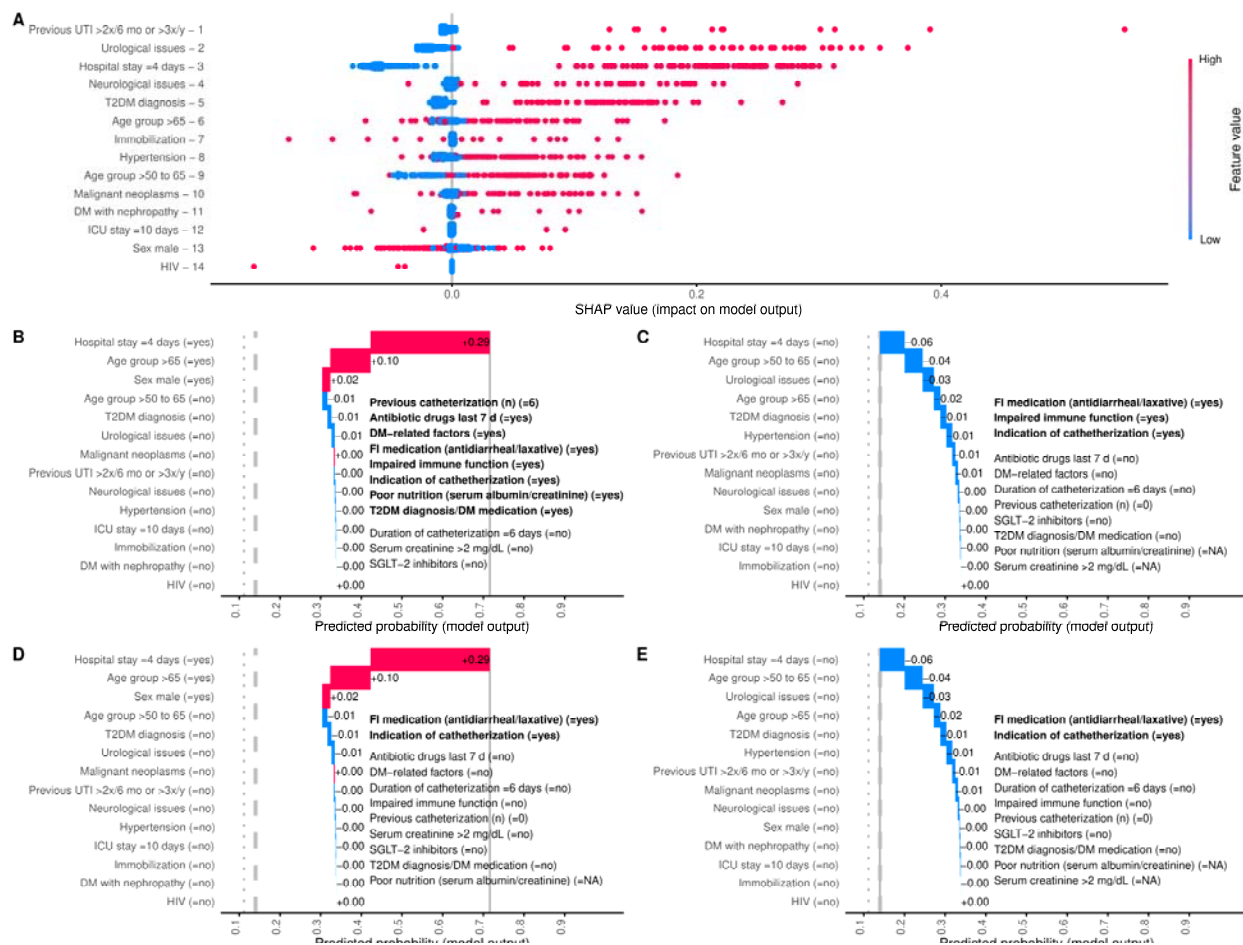
7 \*, after correcting for the multiple testing effect by the Benjamini-Hochberg method; †, covariates for the adjustment are listed in  
 8 Table S4; CA-UTI, catheter-associated UTI; CI, confidence interval; DM, diabetes mellitus; HR, hazard ratio; HIV, human  
 9 immunodeficiency virus; ICU, intensive care unit; T2DM, type 2 DM; UTI, urinary tract infection.

10 We chose RF to predict an outcome with a specific onset from day 1 to 6. By calibration  
 11 (Figure 2A; Table S5; Figure S2), this model was the only well-calibrated one (intercept -0.193  
 12 [95% CI: -0.412, 0.027]; slope 0.844 [95% CI: -0.490, 1.198]; Brier score 0.453 [95% CI: 0.452,  
 13 0.453]). The decision curve analysis also demonstrated the optimal range of thresholds for which  
 14 net benefits were still higher than the references, i.e., maximum  $\sim 0.16$  (Figure S3). Such an  
 15 optimal range was only demonstrated by the RF for predicting an outcome without and with a  
 16 specific onset from day 1 to 6, 9, and 12. All the prediction models achieved AUCs-ROC of  $>0.5$   
 17 (Table S5; Figure S4), among which the RF, XGBoost, and DT did not significantly differ as the  
 18 most discriminative models for predicting an outcome within 6, 9, and 12 days, or with no  
 19 specific onset. Hence, we chose the RF for predicting an outcome within six days as the best  
 20 model according to the calibration, clinical utility, and discrimination ability.



1  
2 Figure 2. Evaluation of the best prediction model using the validation set: (A) calibration plot and the predicted probability  
3 distribution; (B) clinical utility by the decision curve; and (C) discrimination ability by the ROC curve. A regression line is fitted  
4 over the point estimates of the true probabilities on the calibration plot. The predicted probability distribution is also shown for  
5 either CA-UTI positive (=1) or negative (=0). The chosen threshold of 0.14 is shown by a dashed, vertical line on the calibration  
6 plot and decision curve. The corresponding sensitivity and specificity using the chosen threshold are also shown by the dashed,  
7 horizontal and vertical lines on the ROC curve. CA-UTI, catheter-associated UTI; CI, confidence interval; ROC, receiver  
8 operating characteristics; UTI, urinary tract infection.

9 No prediction model had a threshold with the expected net benefit that also led to ~90%  
10 specificity. However, we optimized the best prediction model by prioritizing the expected net  
11 benefit and a reasonable tradeoff between sensitivity and specificity (Figure 2B), i.e., a threshold  
12 of 0.14. It characterized the best prediction model as one with ~95% sensitivity (Figure 2C).  
13 Using the test set with this threshold, we found that the best prediction model achieved 97.63%  
14 (95% CI: 97.57%, 97.69%) sensitivity, 20.95% (95% CI: 20.89%, 21.00%) specificity, 22.85%  
15 (95% CI: 22.79%, 22.92%) PPV, and 97.36% (95% CI: 97.29%, 97.42%) NPV.



1  
2  
3  
4  
5  
6  
7  
8  
9  
10  
11  
12  
13  
Figure 3. Explainability of the best prediction model at the population and individual levels: (A) beeswarm plot; (B) waterfall plot of a true positive from clusters 1 and 2; (C) waterfall plot of a false negative from clusters 1 and 2; (D) waterfall plot of a false positive from clusters 1 and 2; and (E) waterfall plot of a true negative from clusters 1 and 2. In panels B to E, the predicted probability of an individual starts from the average value among all individuals in the training set on the x-axis and from the least impactful predictor on the y-axis. SHAP values in panels B to E are shown at the end of the bars. The SHAP value may be zero due to rounding. The bar of a predictor with an absolute zero SHAP value is invisible. By adding SHAP values of the predictors, the end of the final bar reaches the predicted probability (solid line). If it is more than the threshold (dashed line), then the individual is predicted to be CA-UTI positive. As comparison, we also show the true probability (dotted line) and the values of candidate predictors that were unselected due to limitations of our dataset in panels B to E. The unselected candidate predictor with a higher value is in bold. See samples from other clusters in Figure S6. CA-UTI, catheter-associated UTI; DM, diabetes mellitus; FI, fecal incontinence; HIV, human immunodeficiency virus; ICU, intensive care unit; NA, not available; SGLT-2, sodium-glucose co-transporter-2; SHAP, the Shapley additive explanation; T2DM, type 2 DM; UTI, urinary tract infection.

14 We assessed the explainability of the best prediction model by the SHAP value. At the  
15 population level, a previous UTI diagnosis >2 times per six months or >3 times per year  
16 demonstrated the most extreme impact on the predicted positives (Figure 3A). Unlike this  
17 predictor, the impact of urological issues or a hospital stay  $\geq 4$  days was less extreme, but both  
18 predictors were more commonly positive. The impact of the latter predictor was also the highest  
19 on the predicted negatives with a hospital stay <4 days. Meanwhile, at the individual level, we  
20 identified two visually distinguished groups of clusters using four centers ( $k=4$ ) (Figure S5): (1)

1 clusters 1 and 2 and (2) clusters 3 and 4. All of the clusters covered true positives, false positives,  
2 and true negatives, but only clusters 1 and 2 covered false negatives, from which we randomly  
3 took a sample representing each. We show individual SHAP values for all samples (Figure S6).  
4 Unlike samples from clusters 3 and 4, those from clusters 1 and 2 showed two pairs of samples  
5 such that each pair shared the same predictor values, but one of each pair was falsely predicted.  
6 The four samples mentioned above covered both the predicted positives and negatives. To  
7 identify why the best prediction model made an error, we showed the values of unselected  
8 candidate predictors due to the limitations of our dataset (Figures 3B to 3E). Among them, more  
9 predictor values were respectively higher and lower for the true positive and negative samples.  
10 This finding indicated that the best model would have been more predictive if our dataset could  
11 provide those predictor values in a low-bias manner, i.e., neither perfect separation problem nor  
12 MNAR (before or after assigning their outliers as missing if any). The finding was confirmed at  
13 the population level by the lower intercept of the regression line (Figure 2A). Furthermore, the  
14 calibration plot showed that the less-extreme, predicted probabilities (i.e.,  $\geq 0.15$  to  $< 0.95$ )  
15 underestimated the true probabilities.

## 16 **Discussion**

### 17 *Finding summary*

18 We developed and externally validated an RF model to predict CA-UTIs in advance. The  
19 predictors were: (1) age group  $>50$  to 65 years old (no/yes), (2) age group  $>65$  years old (no/yes),  
20 (3) ICU stay  $\geq 10$  days(no/yes), (4) hospital stay  $\geq 4$  days(no/yes), (5) sex male (no/yes), (6)  
21 T2DM diagnosis (no/yes), (7) immobilization (no/yes), (8) hypertension (no/yes), (9) DM with  
22 nephropathy (no/yes), (10) HIV (no/yes), (11) malignant neoplasms (no/yes), (12) urological  
23 issues (no/yes), (13) previous UTI diagnosis  $>2$  times per six months or  $>3$  times per year  
24 (no/yes), and (14) neurological issues. Our prediction model could detect 97.63% (95% CI:  
25 97.57%, 97.69%) of CA-UTI positives. Among individuals that were predicted CA-UTI  
26 negatives, it was truly negatives by 97.36% (95% CI: 97.29%, 97.42%). Meanwhile, if an  
27 individual was predicted to be CA-UTI positive, it was truly positive by 22.85% (95% CI:  
28 22.79%, 22.92%).

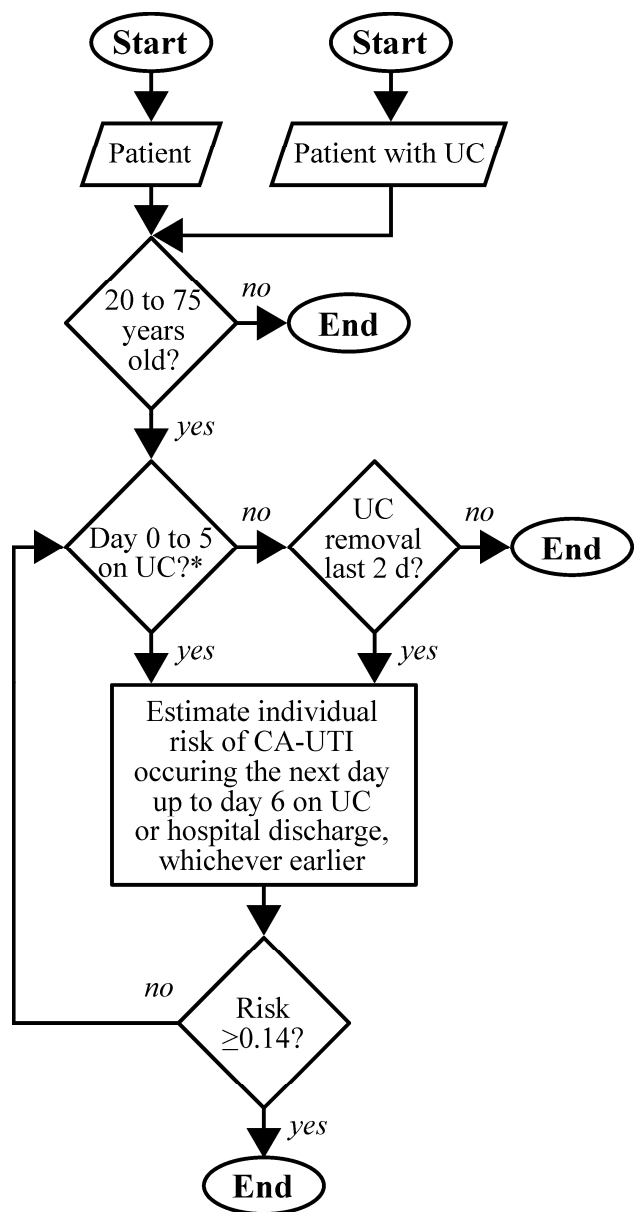


## 1 *Comparison to previous studies*

2           Our model can predict CA-UTIs among hospitalized individuals receiving urinary  
3 catheterization. A prediction could also be made up to 48 h after catheter removal. Two previous  
4 studies developed prediction models for predicting CA-UTIs among  $\geq 18$ -year-old individuals  
5 receiving urinary catheterization (indwelling), limited to those who had stayed in the ICU for  
6  $\geq 48$  h due to neurologic conditions [4, 5].

7           In a single hospital, the first of the two previous studies developed ( $n=389$ ; 4.37% CA-  
8 UTI positives) and internally validated ( $n=148$ ; 4.37% CA-UTI positives) a prediction model [4].  
9 It applied a logistic regression algorithm and used age group ( $<60/\geq 60$  years old), admission  
10 diagnosis (brain tumor/brain injury/cerebral hemorrhage/aneurysm/epilepsy), ICU stay ( $<7/7$  to  
11  $14/15$  to  $30/>30$  days), and serum albumin ( $\geq 3.5/<3.5$  g/dL). Unfortunately, the number of events  
12 in the training set ( $n=17$ ) was too small for a regression algorithm, i.e., a minimum of 20 events  
13 per predictor [20]. The number of events in the validation set ( $n=4$ ) was also too small, which  
14 was supposed to be at least 100 events [21].

15           In the same hospital and period of the data collection, the second study developed but did  
16 not validate their prediction model [5]. It applied a decision tree algorithm and used age group  
17 ( $<60/\geq 60$  years old), admission diagnosis (brain tumor, brain injury, cerebral hemorrhage, or  
18 aneurysm/epilepsy), serum albumin ( $\geq 3.5/<3.5$  g/dL), duration of catheterization ( $<7/\geq 7$  days),  
19 sex (female/male), admission season (spring, autumn, or winter/summer), the Glasgow coma  
20 scale ( $>8/\leq 8$ ), the number of antibiotic regimens ( $>2/\leq 2$ ), and ventilator improvement (no/yes).  
21 The potential problem of sample size was noted, i.e., the number of events in the training set  
22 ( $n=21$ ) which was less than 50 events per predictor, as required for a tree algorithm [20].



1

2 Figure 4. Proposed workflow for applying the prediction model.

3 \*, if the interval between this UC episode and the previous one  
4 is  $\leq 1$  day, then the day counted continues from the previous UC  
5 episode(s) until the interval  $> 1$  days; CA-UTI, catheter-  
6 associated urinary tract infection; UC, urine catheterization.

### 7 *Clinical implication*

8 CA-UTIs represent a significant healthcare challenge due to their prevalence, impacts on  
9 patient outcomes, and contribution to antimicrobial resistance. Effective prevention, surveillance,  
10 and management strategies are crucial in mitigating their impacts. In addition, among other  
11 catheter-based strategies, a catheter with an antimicrobial inner surface is a potential substitute

1 for conventional indwelling catheters [22, 23]. However, this recommendation lacks data to  
2 support its effectiveness in the general population [23]. A meta-analysis found that the efficacy  
3 of an antimicrobial catheter (i.e., silver-alloy coated) for CA-UTIs was doubtful compared to  
4 that of a latex catheter, especially among either non-urology patients or those in institutions with  
5 a low prevalence of CA-UTIs [24]. Two clinical trials were conducted among non-urology  
6 patients. In the first trial, which enrolled neurosurgery patients, an ionic silver-impregnated  
7 catheter demonstrated significantly longer time to asymptomatic bacteriuria among patients with  
8 an indwelling catheter for a minimum of 24 h without postoperative antibiotics, compared to a  
9 silver-alloy, silicon Foley catheter but insignificant among the intention-to-treat population [25].  
10 Meanwhile, the second trial enrolled urogynecology patients and found no significant difference  
11 in UTIs within six weeks of surgery between a silver alloy-impregnated suprapubic catheter and  
12 a standard latex one [26]. These findings implied that only individuals at high risk of a CA-UTI  
13 may benefit from an antimicrobial catheter. A risk prediction model such as we developed in our  
14 study is needed for this scenario.

15         There are two potential starting time points of clinical workflow into which our  
16 prediction model application may fit, i.e., when a clinician encounters (Figure 4): (1) a patient; (2)  
17 a patient with urinary catheterization. The first time point covers patients with urinary  
18 catheterization and those for which it is removed in  $\leq 48$  h. However, this application may require  
19 a policy integrated as a part of a hospital system, e.g., electronic health records (EHRs). The  
20 second time point is more practical for applying our prediction model, although it may uncover  
21 patients for which urine catheterization is removed in  $\leq 48$  h. This second approach can be a part  
22 of a checklist that ensures safe urine catheterization practice.



1  
2 Figure 5. Nomogram: (A) empty; (B) predicted positive; (C) predicted negative. Cyan and red colors respectively indicate  
3 positive (=1) and negative (=0) values of each predictor. DM, diabetes mellitus; HIV, human immunodeficiency virus; ICU,  
4 intensive care unit; SGLT-2, sodium-glucose co-transporter-2; T2DM, type 2 DM; UTI, urinary tract infection.

5 With the proposed workflow (Figure 4), clinicians can estimate the individual risks of  
6 CA-UTIs using our model. It can be embedded in an EHR system, for a clinical support system,  
7 and it is also provided by our web application for quick implementation  
8 (<https://predme.app/en/cauti6d/>). Furthermore, we provide a nomogram if a user cannot access  
9 the web application (Figure 5A). To use this nomogram, a user assesses all of the predictors from  
10 the first to the last order (Figures 5B and 5C) using these steps: (1) find a predictor with a  
11 positive value; (2) draw a line from the left-most-sided positive (=1) rectangle to the right-most-  
12 sided rectangle (either positive or negative); (3) match the predictor values to the data, upper and  
13 lower to the starting point of the line; (4) if they match, then draw a line from the lowest to the  
14 highest rectangles and find which panel this line ends up to estimate the risk ( $\geq 0.14$  or  $< 0.14$ ); (5)  
15 if they do not match, then check the next right-hand-sided positive (=1) rectangle and repeat  
16 steps 4 to 5 until a rectangle of the next positive predictor is available downward; and (6) repeat  
17 step 1.

18 If an individual's risk of a CA-UTI is  $\geq 0.14$ , then this workflow should not be used  
19 anymore for this episode of urinary catheterization. Any decisions after information of a positive

1 prediction had not been available when our prediction model was developed. Such information  
2 can change the causal structure and our model's predictive performance.

### 3 *Strengths and limitations*

4 Our sample size was large for both model development and external validation.  
5 Furthermore, our prediction model achieved an acceptable predictive performance. In addition,  
6 our prediction model can be easily implemented. However, we need to address several  
7 limitations of our study. First, some variables could be biased in our database and thus might  
8 hamper the predictive performance of our model. Second, our model is also only capable of  
9 predicting a CA-UTI up to 6 days after the start of urinary catheterization before discharge. Third,  
10 our study cohort only consisted of an ethnic Chinese population, and data were collected in  
11 Taiwan. Since the epidemiology of CA-UTI varies globally, influenced by differences in  
12 healthcare practices and infection control policies, validation of our model in other countries  
13 should be considered. Finally, adherence to evidence-based guidelines is critical for reducing the  
14 incidence of CA-UTIs. Some healthcare-associated and behavioral variables, such as the  
15 compliance with the bundle care of urinary catheters and the drainage system, were not available  
16 in the database.

### 17 **Conclusions**

18 A prediction model for CA-UTIs was developed and externally validated, using 14  
19 predictors. Most CA-UTI positives could be detected, and most individuals were true negatives if  
20 they were predicted to be CA-UTI negatives. Therefore, our prediction model was clinically  
21 sufficient to support decision-making for preventing CA-UTIs among individuals which were  
22 predicted to be CA-UTI positives. Future studies are needed for prospective evaluation of our  
23 prediction by EHR integration, web application, or a nomogram. Individualized treatment after  
24 knowing the prediction should be developed and tested. Eventually, we also need to evaluate the  
25 impacts of the prediction model with or without specific treatments on patient outcomes.

### 26 **Acknowledgements**

27 The authors acknowledge the computational and technical support of the Clinical Data  
28 Center, Office of Data Science, Taipei Medical University, Taiwan. This work was supported by:  
29 (1) the Postdoctoral Accompanies Research Project from the National Science and Technology

1 Council in Taiwan [grant no. NSTC111-2811-E-038-003-MY2] to HS; (2) the Ministry of  
2 Science and Technology in Taiwan [grant nos. MOST110-2628-E-038-001 and MOST111-2628-  
3 E-038-001-MY2] to ECYS; and (3) the Higher Education Sprout Project from the Ministry of  
4 Education in Taiwan [grant nos. DP2-111-21121-01-A-05 and DP2-TMU-112-A-13] to ECYS.  
5 These funding bodies had no role in the study design; in the collection, analysis, and  
6 interpretation of the data; in the writing of the report; or in the decision to submit the article for  
7 publication. The authors declare that they have no competing interests.

## 8 **CRedit authorship contribution statement.**

9 **HS:** Conceptualization, Methodology, Software, Validation, Formal analysis, Writing –  
10 original draft, Visualization, Funding acquisition. **CC:** Conceptualization, Methodology,  
11 Validation, Investigation, Data curation, Writing – review & editing, Project administration.  
12 **HSC:** Conceptualization, Methodology, Writing – review & editing. **PS:** Conceptualization,  
13 Methodology, Writing – review & editing. **PYY:** Conceptualization, Methodology, Validation,  
14 Investigation, Data curation, Writing – review & editing, Project administration. **JHK:**  
15 Conceptualization, Methodology, Resources, Writing – review & editing, Supervision. **ECYS:**  
16 Conceptualization, Methodology, Resources, Writing – review & editing, Supervision, Funding  
17 acquisition. All authors have read and approved the manuscript and agreed to be accountable for  
18 all aspects of the work in ensuring that questions related to the accuracy or integrity of any part  
19 of the work are appropriately investigated and resolved.

## 20 **Data availability**

21 The data that support the findings of this study are available from the Clinical Data  
22 Center, Office of Data Science, Taipei Medical University, Taiwan, but restrictions apply to the  
23 availability of these data, which were used under license for the current study (access approval  
24 no.: A202206008), and so are not publicly available. Data are however available from the  
25 authors upon reasonable request and with permission of the Clinical Data Center. To get this  
26 permission, one need to request an access from the Clinical Data Center (<https://ods.tmu.edu.tw/>).  
27 We shared the programming codes for all analyses in this study  
28 ([https://github.com/herdiantrisufriyana/colab\\_uti](https://github.com/herdiantrisufriyana/colab_uti)), including predictive modeling.

## 1   **References**

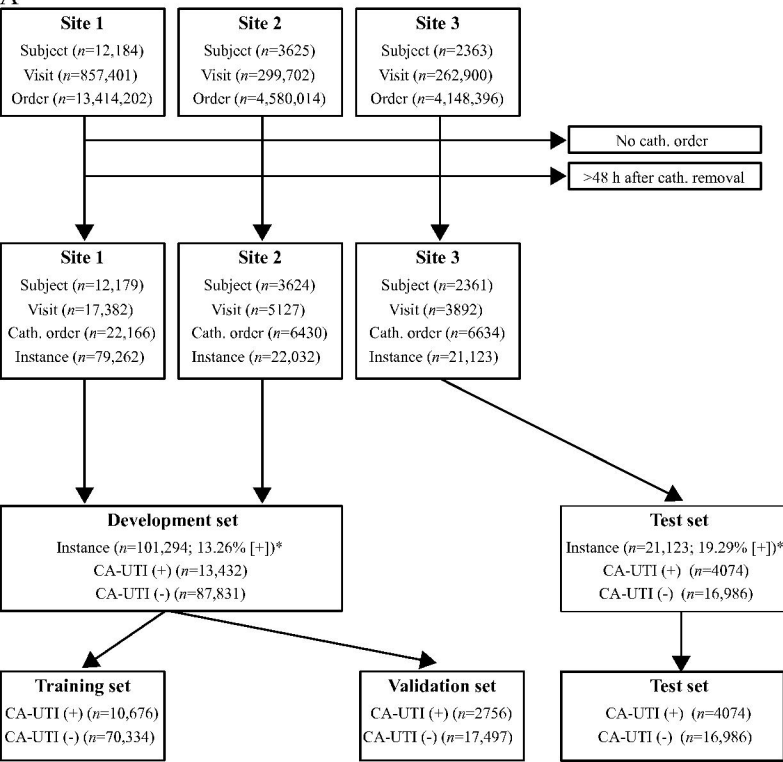
- 2   1.   Chenoweth CE. Urinary Tract Infections: 2021 Update. Infectious disease  
3   clinics of North America **2021**; 35(4): 857-70.
- 4   2.   Tedja R, Wentink J, O'Horo JC, Thompson R, Sampathkumar P. Catheter-  
5   Associated Urinary Tract Infections in Intensive Care Unit Patients.  
6   Infection control and hospital epidemiology **2015**; 36(11): 1330-4.
- 7   3.   Gray J, Rachakonda A, Karnon J. Pragmatic review of interventions to  
8   prevent catheter-associated urinary tract infections (CAUTIs) in adult  
9   inpatients. The Journal of hospital infection **2023**; 136: 55-74.
- 10  4.   Li Y, Liu Y, Huang Y, et al. Development and validation of a user-friendly  
11  risk nomogram for the prediction of catheter-associated urinary tract  
12  infection in neuro-intensive care patients. Intensive & critical care nursing  
13  **2023**; 74: 103329.
- 14  5.   Liu Y, Li Y, Huang Y, et al. Prediction of Catheter-Associated Urinary Tract  
15  Infections Among Neurosurgical Intensive Care Patients: A Decision Tree  
16  Analysis. World neurosurgery **2023**; 170: 123-32.
- 17  6.   Anggi A, Wijaya DW, Ramayani OR. Risk Factors for Catheter-Associated  
18  Urinary Tract Infection and Uropathogen Bacterial Profile in the Intensive  
19  Care Unit in Hospitals in Medan, Indonesia. Open access Macedonian  
20  journal of medical sciences **2019**; 7(20): 3488-92.
- 21  7.   Daniels KR, Lee GC, Frei CR. Trends in catheter-associated urinary tract  
22  infections among a national cohort of hospitalized adults, 2001-2010.  
23  American journal of infection control **2014**; 42(1): 17-22.
- 24  8.   Li F, Song M, Xu L, Deng B, Zhu S, Li X. Risk factors for catheter-  
25  associated urinary tract infection among hospitalized patients: A systematic  
26  review and meta-analysis of observational studies. Journal of advanced  
27  nursing **2019**; 75(3): 517-27.
- 28  9.   Gray M. Reducing catheter-associated urinary tract infection in the critical  
29  care unit. AACN advanced critical care **2010**; 21(3): 247-57.
- 30  10.  Platt R, Polk BF, Murdock B, Rosner B. Risk factors for nosocomial urinary  
31  tract infection. American journal of epidemiology **1986**; 124(6): 977-85.
- 32  11.  Leelakrishna P, Karthik Rao B. A study of risk factors for catheter  
33  associated urinary tract infection. Int J Adv Med **2018**; 5(2): 334-9.
- 34  12.  Hariati H, Suza DE, Tarigan R. Risk Factors Analysis for Catheter-  
35  Associated Urinary Tract Infection in Medan, Indonesia. Open access  
36  Macedonian journal of medical sciences **2019**; 7(19): 3189-94.
- 37  13.  Al-Rubeaan KA, Moharram O, Al-Naqeb D, Hassan A, Rafiullah MR.  
38  Prevalence of urinary tract infection and risk factors among Saudi patients  
39  with diabetes. World journal of urology **2013**; 31(3): 573-8.

- 1 14. Nitzan O, Elias M, Chazan B, Saliba W. Urinary tract infections in patients  
2 with type 2 diabetes mellitus: review of prevalence, diagnosis, and  
3 management. *Diabetes, metabolic syndrome and obesity : targets and*  
4 *therapy* **2015**; 8: 129-36.
- 5 15. Miano R, Germani S, Vespasiani G. Stones and urinary tract infections.  
6 *Urologia internationalis* **2007**; 79 Suppl 1: 32-6.
- 7 16. Dybowski BA, Zapała P, Bres-Niewada E, et al. Catheter-associated  
8 bacterial flora in patients with benign prostatic hyperplasia: shift in  
9 antimicrobial susceptibility pattern. *BMC infectious diseases* **2018**; 18(1):  
10 590.
- 11 17. Aggarwal N, Lotfollahzadeh S. Recurrent Urinary Tract Infections.  
12 StatPearls. Treasure Island (FL): StatPearls Publishing, **2023**.
- 13 18. Vasudeva P, Madersbacher H. Factors implicated in pathogenesis of urinary  
14 tract infections in neurogenic bladders: some revered, few forgotten, others  
15 ignored. *Neurourology and urodynamics* **2014**; 33(1): 95-100.
- 16 19. Sufriyana H, Su EC-Y. Nomogram for a machine learning model with  
17 categorical predictors to predict binary outcome. *PROTOCOL (Version 1)*.  
18 Accessed (in press).
- 19 20. van der Ploeg T, Austin PC, Steyerberg EW. Modern modelling techniques  
20 are data hungry: a simulation study for predicting dichotomous endpoints.  
21 *BMC medical research methodology* **2014**; 14: 137.
- 22 21. Moons KGM, Wolff RF, Riley RD, et al. PROBAST: A Tool to Assess Risk  
23 of Bias and Applicability of Prediction Model Studies: Explanation and  
24 Elaboration. *Annals of internal medicine* **2019**; 170(1): W1-w33.
- 25 22. Venkataraman R, Yadav U. Catheter-associated urinary tract infection: an  
26 overview. *Journal of basic and clinical physiology and pharmacology* **2023**;  
27 34(1): 5-10.
- 28 23. Rubi H, Mudey G, Kunjalwar R. Catheter-Associated Urinary Tract  
29 Infection (CAUTI). *Cureus* **2022**; 14(10): e30385.
- 30 24. Johnson JR, Kuskowski MA, Wilt TJ. Systematic review: antimicrobial  
31 urinary catheters to prevent catheter-associated urinary tract infection in  
32 hospitalized patients. *Annals of internal medicine* **2006**; 144(2): 116-26.
- 33 25. Leuck AM, Johnson JR, Hunt MA, et al. Safety and efficacy of a novel  
34 silver-impregnated urinary catheter system for preventing catheter-  
35 associated bacteriuria: a pilot randomized clinical trial. *American journal of*  
36 *infection control* **2015**; 43(3): 260-5.
- 37 26. Singh R, Hokenstad ED, Wiest SR, et al. Randomized controlled trial of  
38 silver-alloy-impregnated suprapubic catheters versus standard suprapubic  
39 catheters in assessing urinary tract infection rates in urogynecology patients.  
40 *International urogynecology journal* **2019**; 30(5): 779-87.

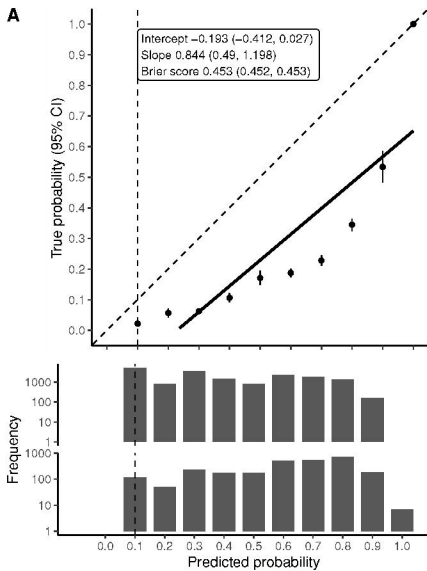
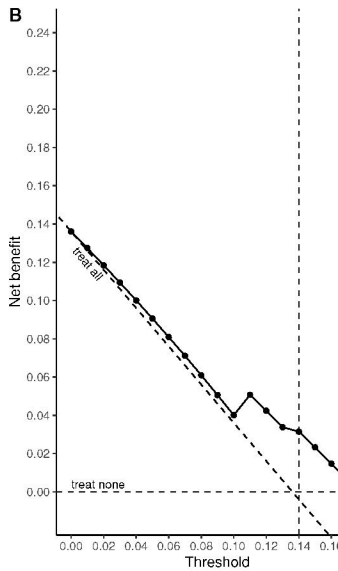


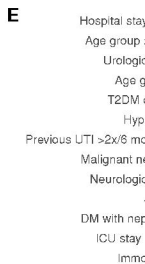
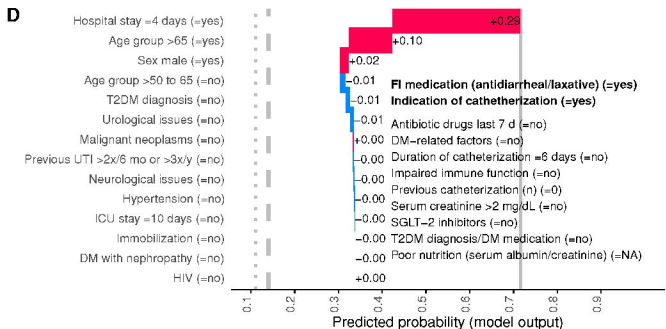
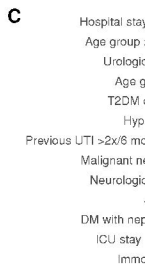
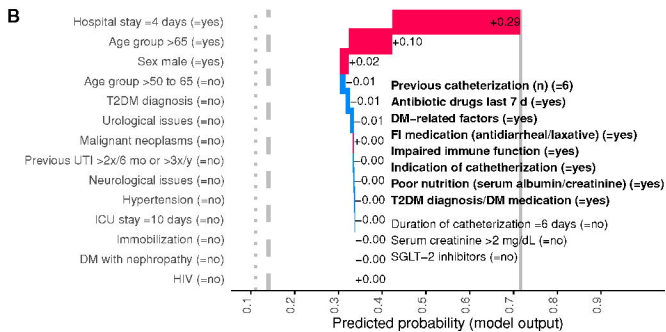
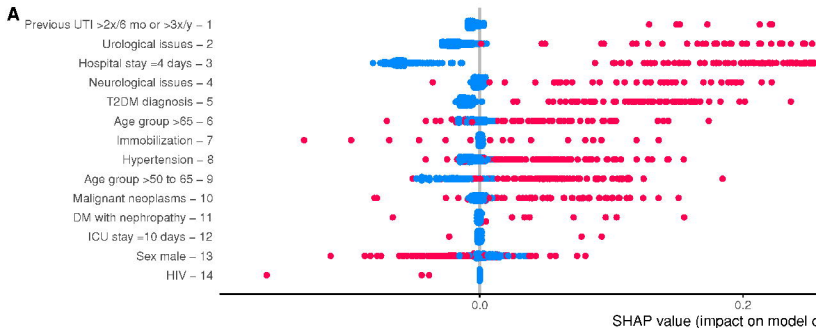


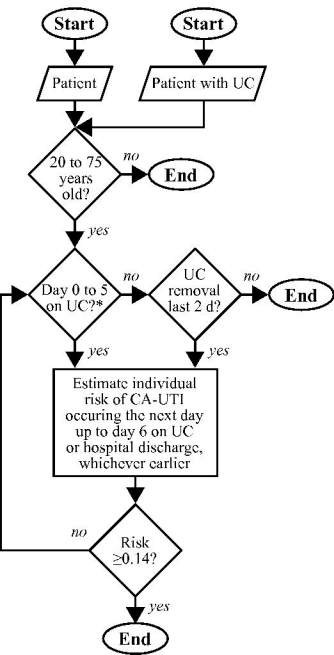
A



B

**A****B**





**A**

Assessment order

**B**

Assessment order

**C**

Assessment order

