

1- supplemental figures and tables legends:

S1: Antibody panels used for blood cell phenotyping. The blood cell panel (BCP) and T cell activation panel (TCAP). Includes antibody names, source and manufacturer references. The matrixes indicate the antibody combinations used for full staining (BCP or TCAP) plus Fluorescence minus one (FMO) controls.

S2: General flow cytometry gating strategy for analysis. A) For general cell types within blood isolated PBMCs; B) BCP-specific: to select monocytes, T ad B cells according to CD14, CD3 and CD19 expression, respectively before analysing the percentage of cells expressing the indicated surface markers; C) TCAP-specific: to separate CD8⁺ and CD4⁺ from lymphocytes before analysing the percentage of cells expressing the indicated markers.

S3: Monocytes subsets. A) Scatter plot showing percentage of CD14⁺ monocytes for the healthy controls and suspected sepsis groups, with Mean values +/-SD; B) Flow cytometry scatter plot showing CD14/CD16 gating on classical, intermediate and non-classical monocytes (CM, IM and NCM, respectively) and graph plotting the percentage of monocytes for each subpopulation, with Mean +/-SD.

S4: Expression of CCR1, CCR7 and TLR2 on monocytes subpopulations. Boxplots showing the percentage of positive cells for each marker, Boxplots for both healthy (white) and suspected sepsis (grey) groups are shown with all points plotted. Mann-Whitney tests showed no statistical differences.

S5: PCA for BCP panel variables: Principal component analysis (PCA) scores plot for the first two components for the blood cell panel dataset with healthy controls in black and sepsis-suspected patients in red. The biplot shows the loadings as vectors (black arrows) and scores by sample names in grey.

S6: Flow cytometry gating strategy for subpopulations with TCAP. A) gating for single marker analysis, B) CXCR3/CCR5 co-expression, C) CD45RO/CD25 double positive cells, all with gates set based on the relevant FMO controls.

S7: Markers expression profiles on T cells subpopulations. Frequency of CD8^{+(high)} and CD4⁺ T cells that are A) CXCR3/CCR5 double positive, B) Memory T cells (CD45RO⁺), C) CXCR3/CCR5 double positive Type-1 like regulatory T cells (CD45RO/CD25), D) TLR2

positive memory T cells (CD45RO⁺). Boxplots for both healthy and suspected sepsis groups are shown with all points plotted. Statistical significance (adjusted p values) were determined using Mann-Whitney tests with adjustment for multiple comparisons using Benjamini, Krieger and Yekutieli secondary test.

S8: PCA for all TCAP variables. Principal component analysis (PCA) scores plot for the first two components for the T cell activation panel dataset with healthy controls in black and sepsis-suspected patients in red. The biplot shows the loadings as vectors (black arrows) and scores by sample names in grey.

S9: Spearman correlation analysis for CC and sCD14 profiles on sepsis subgroups. Heatmaps showing correlation matrix after hierarchical clustering for confirmed and unconfirmed sepsis subgroups.

S10: PCA graphs identifying sepsis subgroups. Principal component analysis plots for the first two components grouping healthy controls (black), confirmed sepsis (sepsis, red) and unconfirmed sepsis (purple) cases for variables from (A) the three separate datasets and (B) the three datasets combined. The scores plot obtained using variables from all datasets (see Table S2) shows grouping of healthy controls (black ellipse) but does not separate the patient sub-groups.

Table S1: relevant clinical information regarding patients recruited upon admission to York hospital ED with suspected sepsis, including microbiology tests results and clinical diagnostic upon discharge.

Table S2: Full dataset of variables and measures incorporated in the study analysis.

2- Supplemental Figures

Figure S1:

Antibodies			Blood cell panel (BCP)											
sources	Ref number		FMO BV421	FMO BV510	FMO A488	FMO PE	FMO PE/Dazzle 594	FMO BV650	FMO APC	FMO PerCP	FMO APC/Fire 750	FMO 808	BCP	Unstained
		BV421 CD16		x	x	x	x	x	x	x	x	x	x	
		BV510 CCR2	x		x	x	x	x	x	x	x	x	x	
Biologends	301038	A488 CCR5	x	x		x	x	x	x	x	x	x	x	
Biologends	302048	PE TLR2.1	x	x	x		x	x	x	x	x	x	x	
In house	Clone MC5	PE/Dazzle 594 CCR7	x	x	x	x		x	x	x	x	x	x	
Biologends	309708	BV650 CD19	x	x	x	x	x		x	x	x	x	x	
Biologends	353236	APC CCR1	x	x	x	x	x	x		x	x	x	x	
Biologends	302238	PerCP CD14	x	x	x	x	x	x			x	x	x	
Biologends	362908	APC/Fire 750 CD3	x	x	x	x	x	x	x	x		x	x	
Biologends	325632	808 Live/Dead	x	x	x	x	x	x	x	x	x		x	

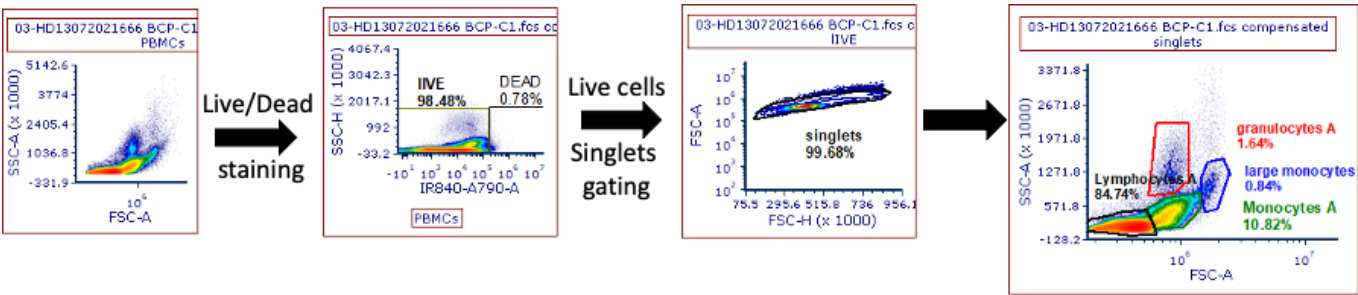
x = includes this fluorophore

Antibodies			T-cell activation panel (TCAP)									
sources	Ref number		FMO BV421	FMO FITC	FMO PE	FMO PE/Dazzle 594	FMO A647	FMO A700	FMO APC/Fire 750	FMO 808	TCAP	Unstained
		BV421 CD25		x	x	x	x	x	x	x	x	
		FITC TLR2.5	x		x	x	x	x	x	x	x	
Biologends	302630	PE CD28	x	x		x	x	x	x	x	x	
Abcam	ab16894	PE/Dazzle 594 CD4	x	x	x		x	x	x	x	x	
Biologends	353236	A647 CCR5	x	x	x	x		x	x	x	x	
Biologends	300548	A700 CD45RO	x	x	x	x	x		x	x	x	
In house	Clone MC5	APC/Fire 750 CD8	x	x	x	x	x			x	x	
Biologends	304218	808 Live/Dead	x	x	x	x	x	x	x		x	

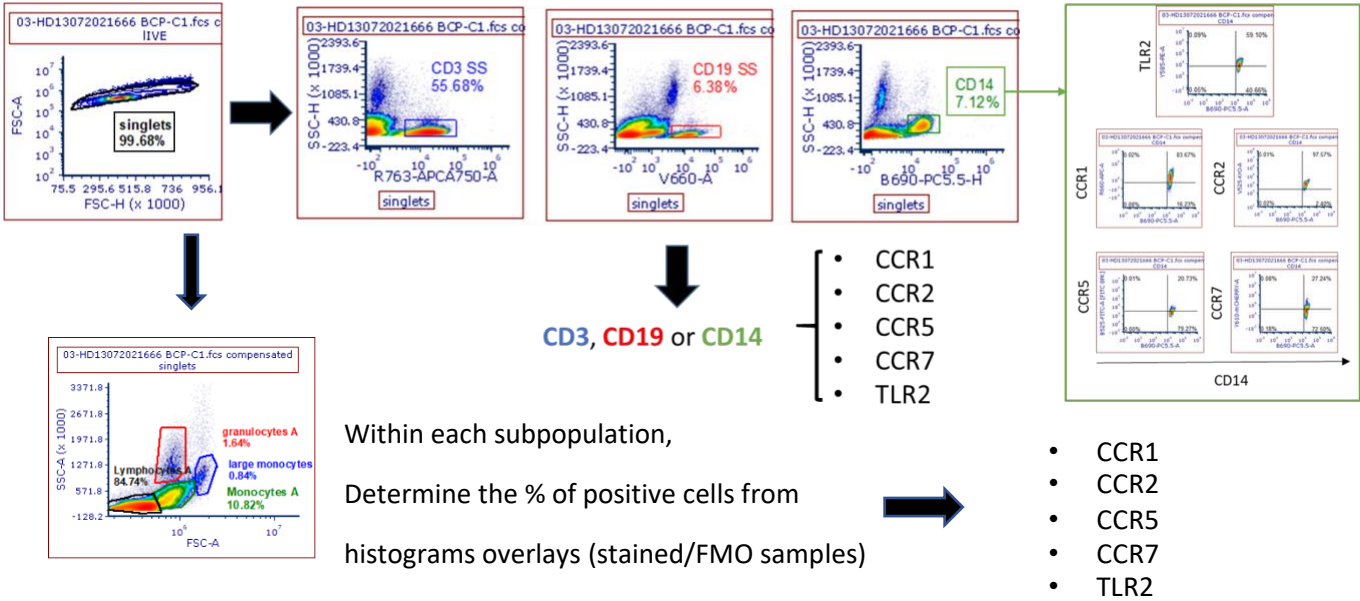
x = includes this fluorophore

Figure S2:

A. General Blood-isolated cells gating:



B. Blood cell Panel (BCP) specific gating:



C. T cell Panel (TCAP) specific gating strategy:

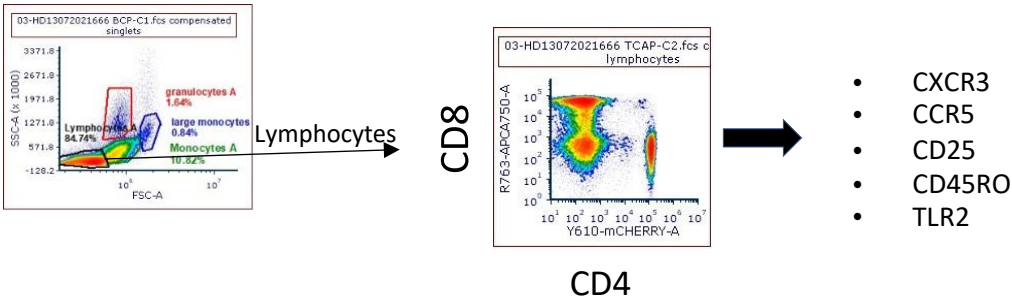
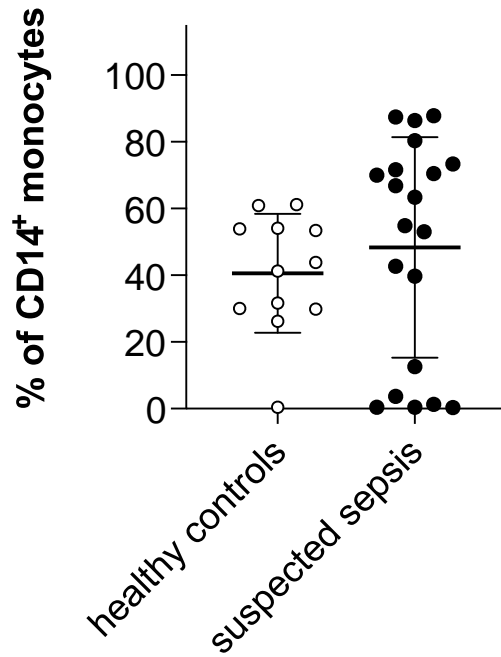


Figure S3:

A. CD14⁺ cells in monocytes population



B. CD14 and CD16 expression to define Classical, Intermediate and non-classical monocyte subsets (CM, IM and NCM)

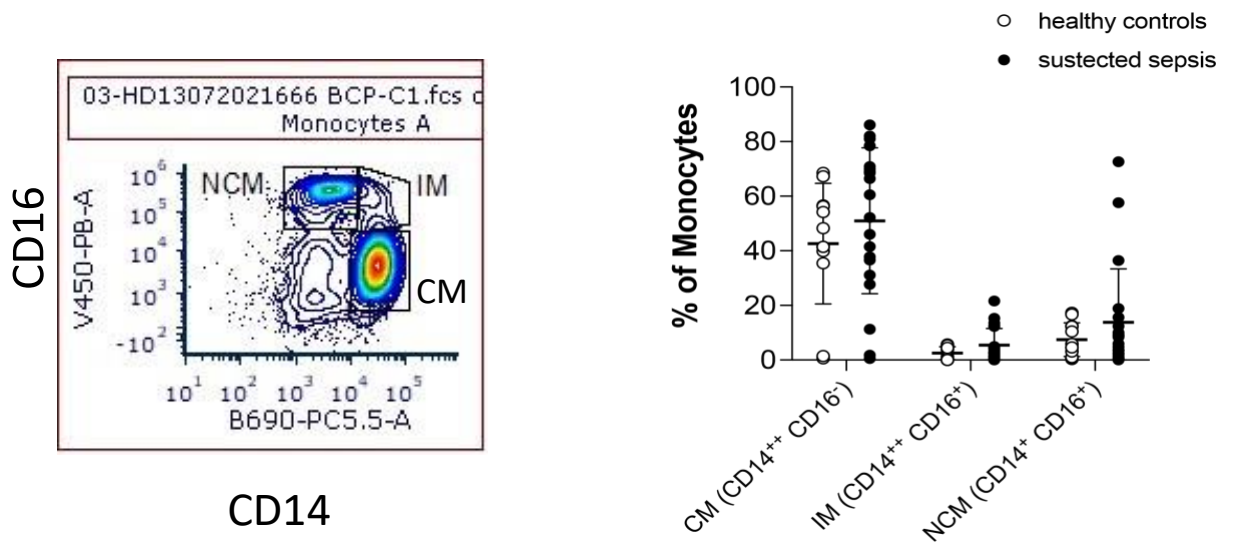


Figure S4:

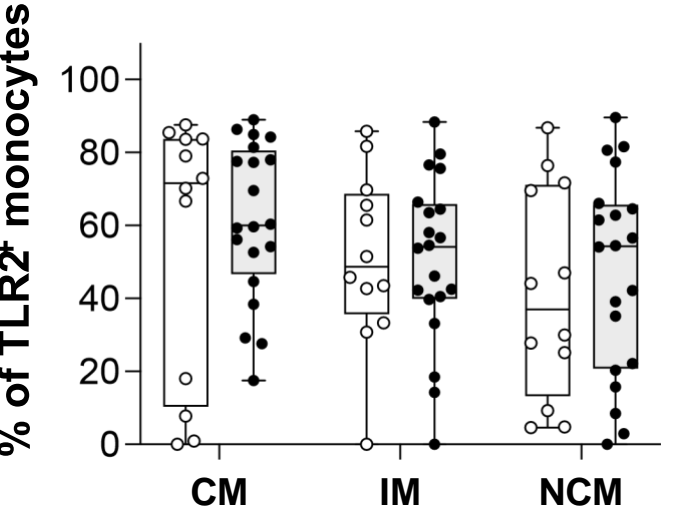
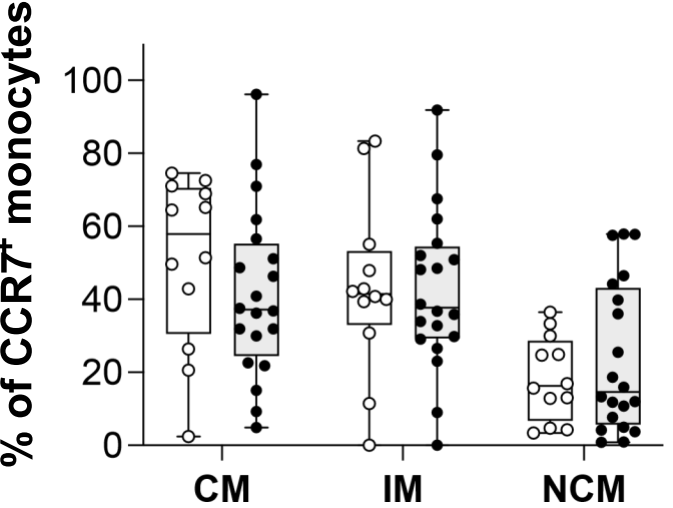
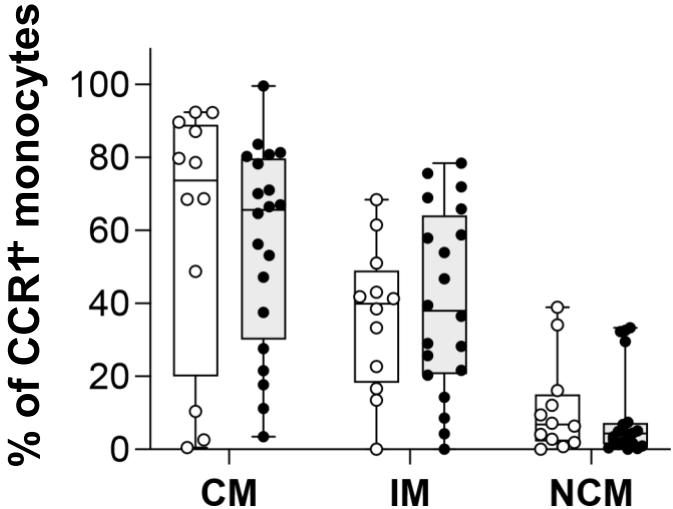


Figure S5:

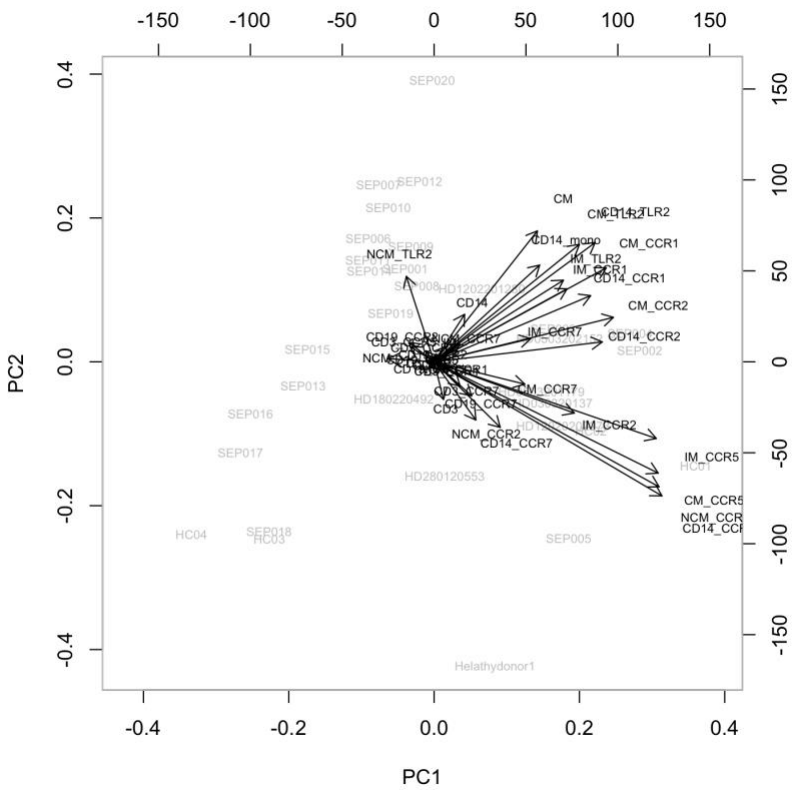
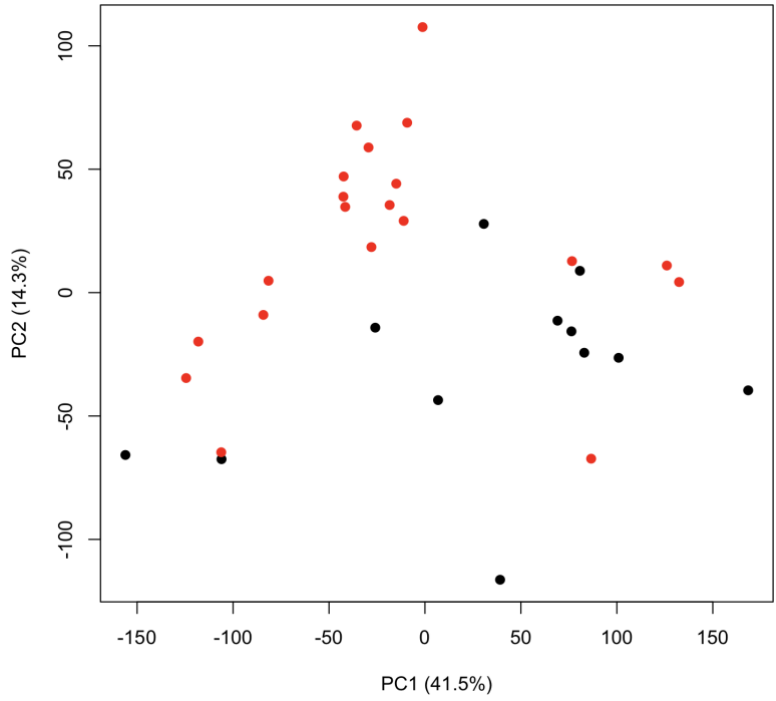
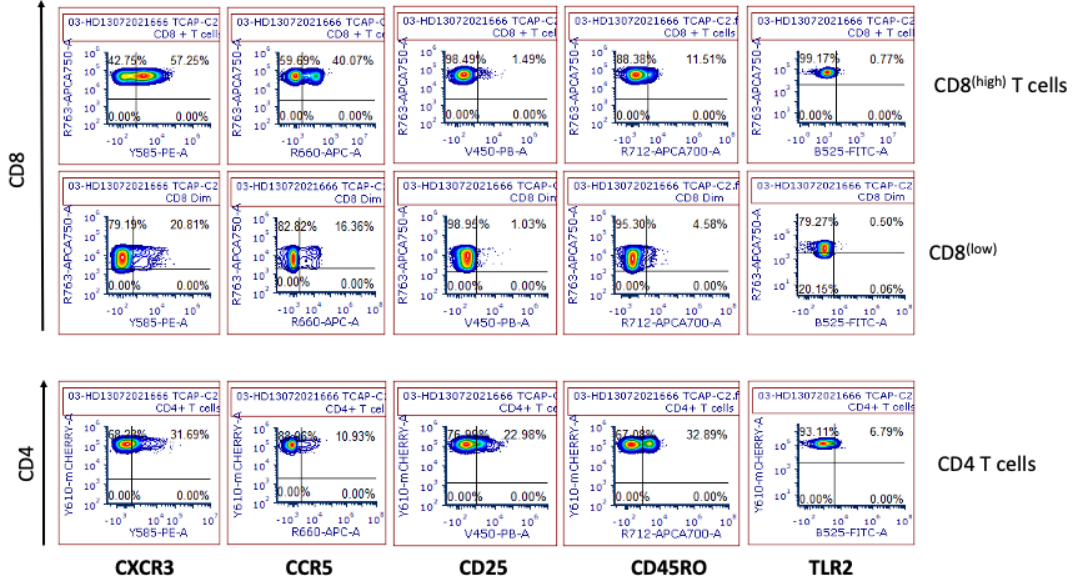
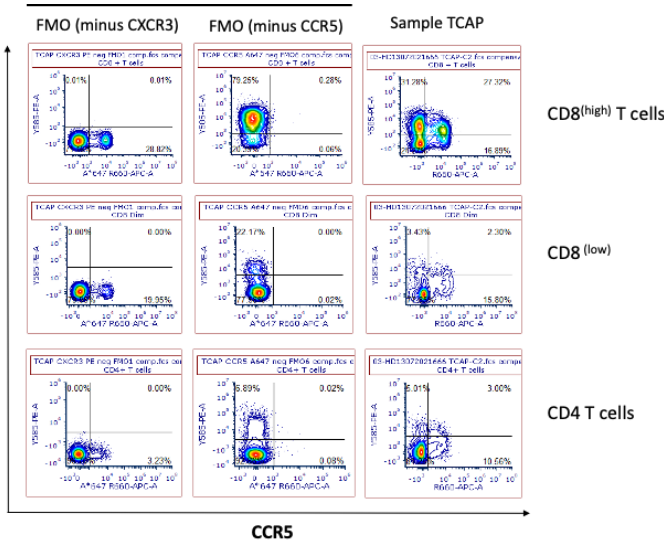


Figure S6:

A.



B.



C.

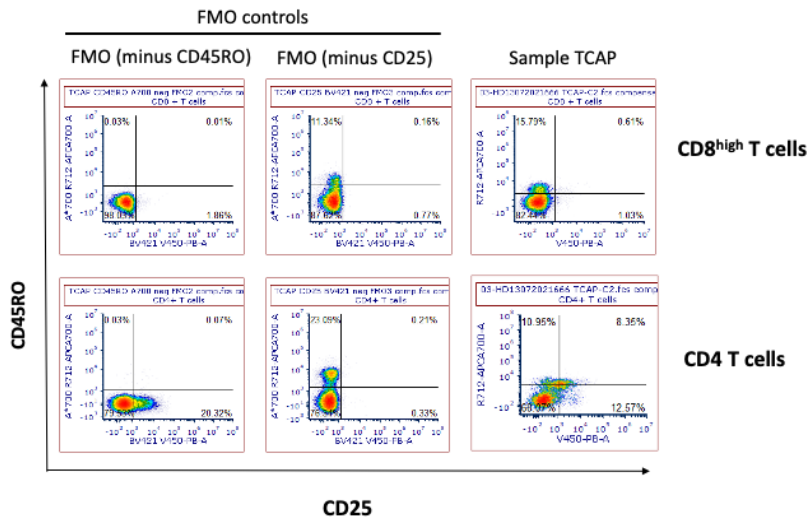
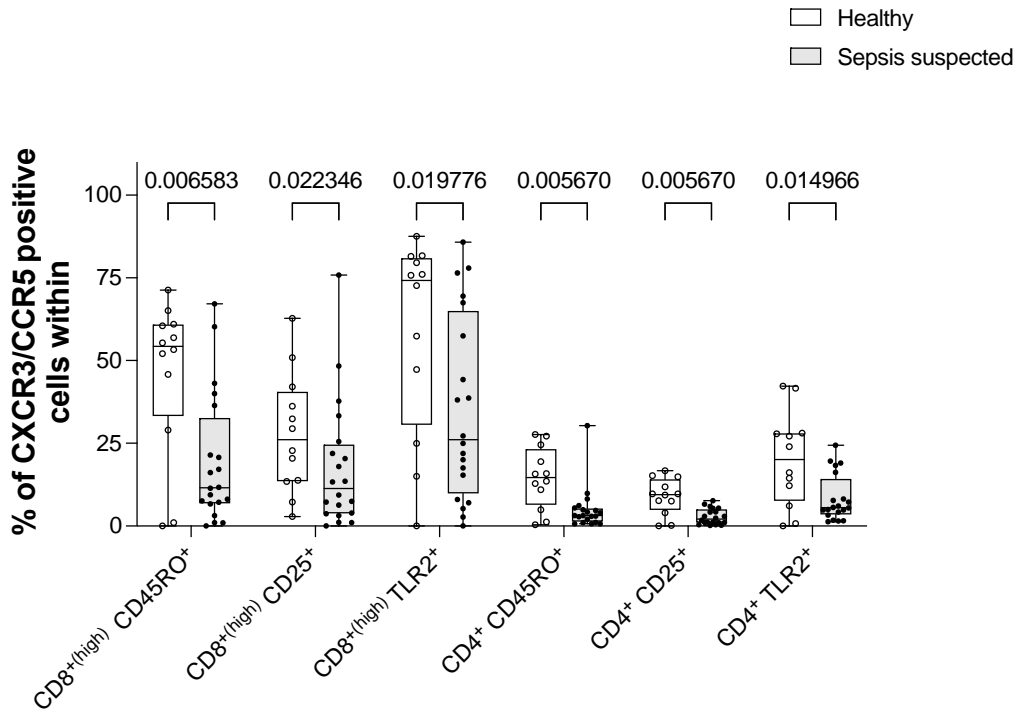
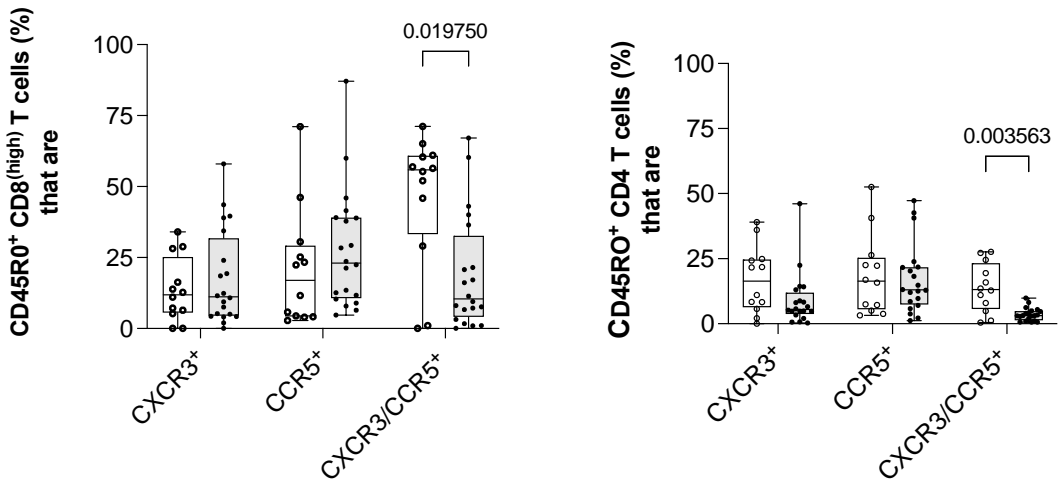


Figure S7:

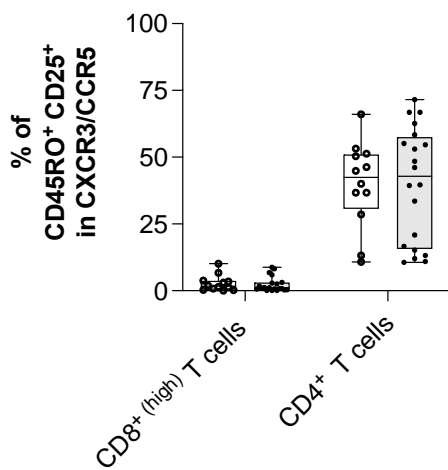
A



B



C



D

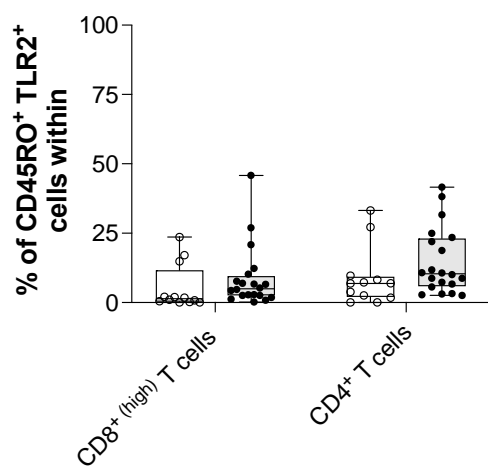


Figure S8:

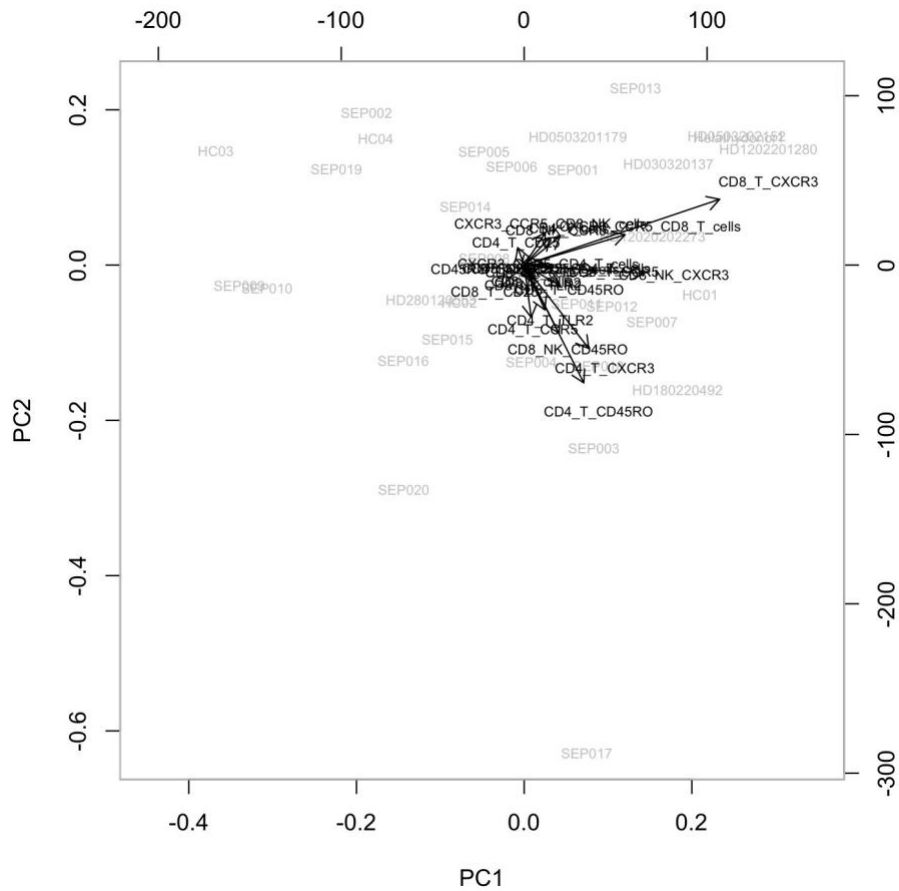
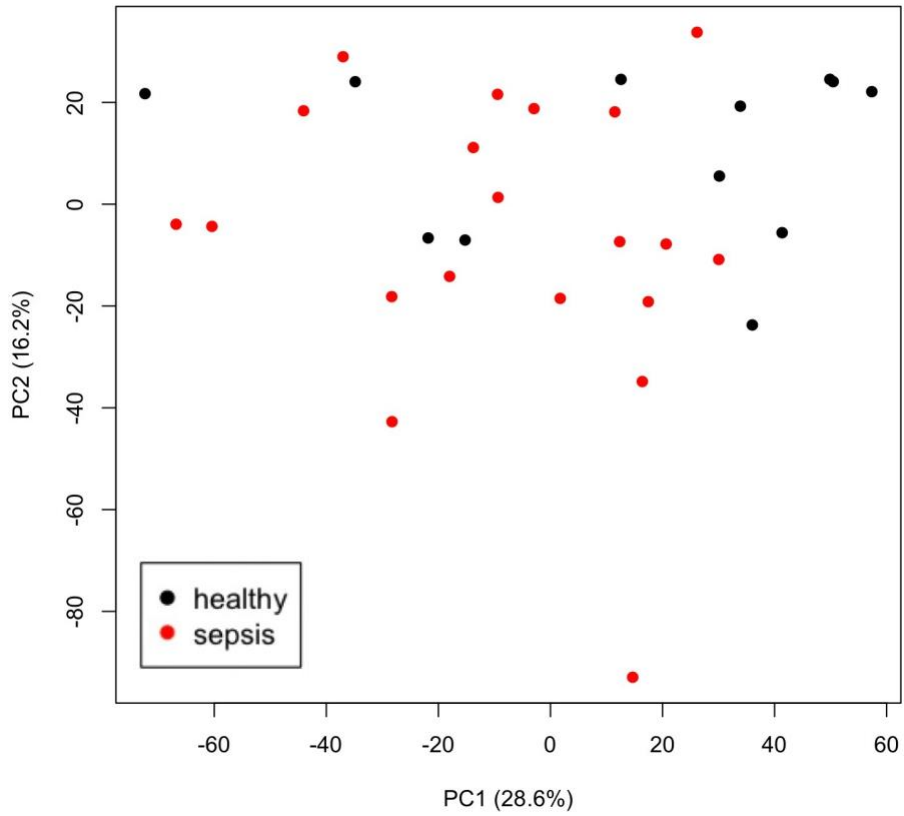
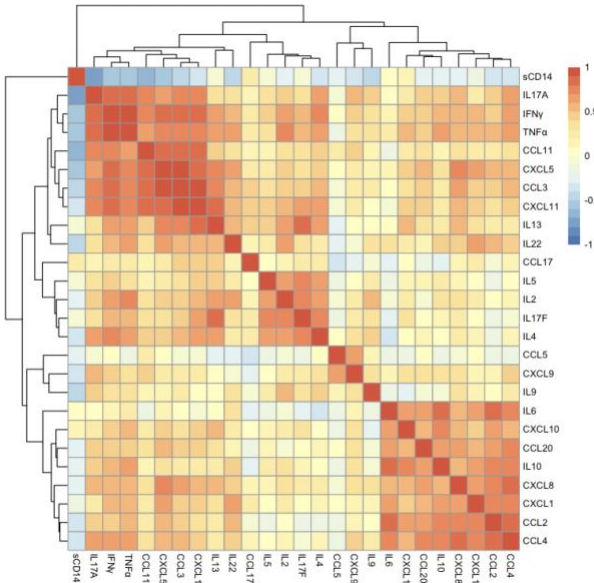


Figure S9:

Confirmed Sepsis



Unconfirmed Sepsis

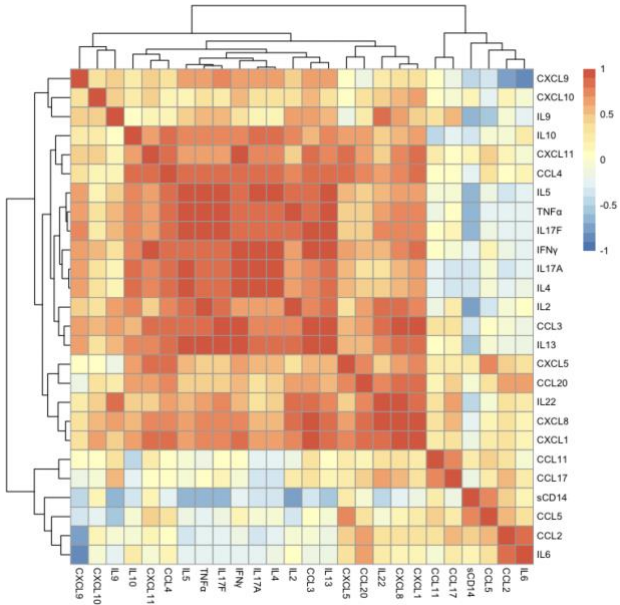
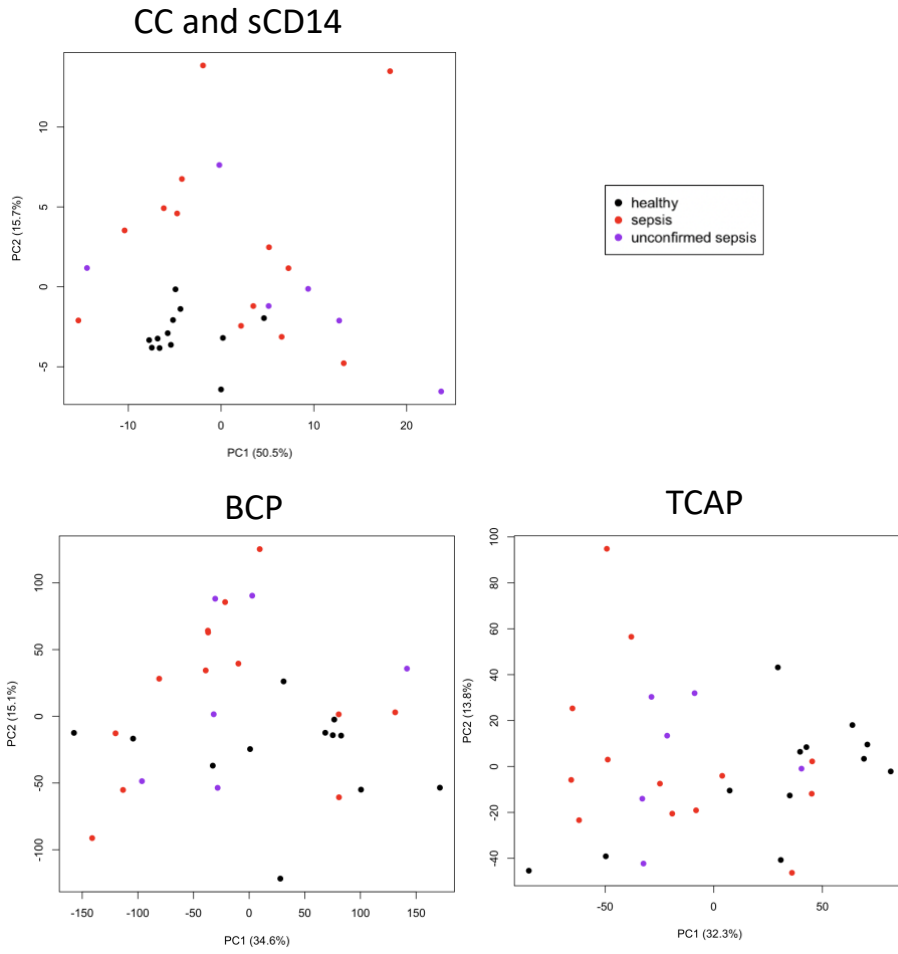
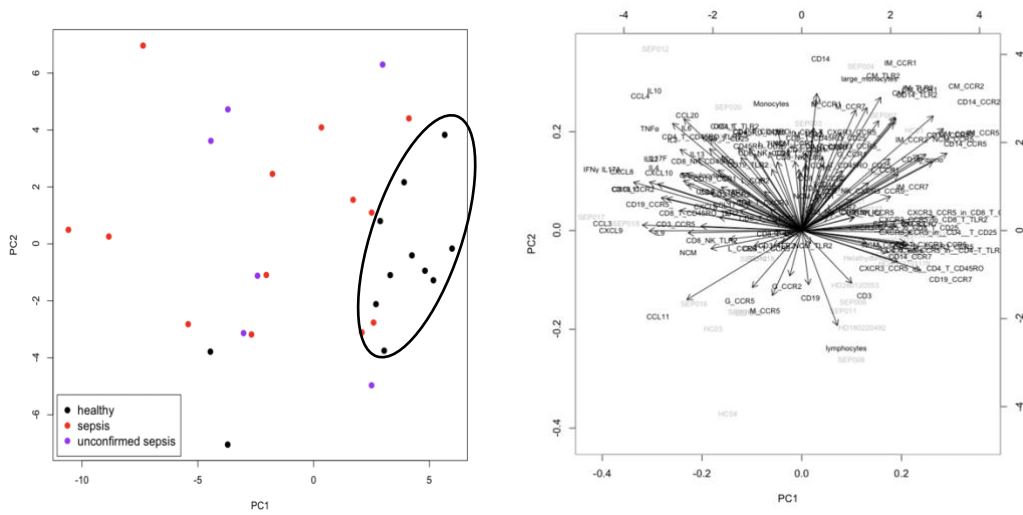


Figure S10:

A.



B.



3- Supplemental Tables:

Table S1:

Patient	Age	Sex	Presenting Complaint	Diagnosis in ED	WBC upon enrolment (109/L)		Status at Discharge	Vasoactive Infusion	Culture Results	CXR Results	Peak CRP within 48 hours	Gram Positive Infection?	Diagnosis on Discharge	Sepsis status on Discharge			
					normal range 4.5-11	Length of Stay											
SEP001	37	Female	Drowsiness	Chest sepsis	24.5	2 days	Alive	No	2x BCs Negal Right basal consolidation		152	Possible - CAP but no positive cultures	CAP	Confirmed			
SEP002	60	Male	Confusion	Sepsis 2y to cellulitis	18.8	16 days	Alive	No	2x BCs Negal N/A		164	Possible - swab grew S aureus	Sepsis of unknown origin, AKI, hypokalaemia, hyponatraemia, venous leg ulcers	Confirmed			
SEP003	56	Female	Shortness of breath	Chest sepsis	17.7	77 days	Alive	Yes	2x BCs Negal Bilateral basal haziness		165	Unlikely - ? Viral exacerbation of asthma.	Infective exacerbation of asthma, metapneumovirus positive, AKI, C. difficile infection, UTI	Confirmed			
SEP004	54	Male	SOB/cough	CAP	21.7	1 day	Alive	No	2x BCs Negal Slight haziness right side		137	Unlikely	IECOPD	Unconfirmed			
SEP005	91	Female	SOB, confusion	Pneumonia	5.7	Less than 24 h.	Dead	No	2x BCs Negal Bilateral consolidation		156	Possible - severe CAP but no positive cultures	CAP	Confirmed			
SEP006	93	Male	SOB	No diagnosis stated	10.8	1 day	Alive	No	2x BCs Negal New consolidation		17	Unlikely - CAP but no positive cultures and low CRP	CAP	Confirmed			
SEP007	82	Male	SOB	CAP	9.1	1 day	Alive	No	2x BCs Negal Nil acute		6	Unlikely - CXR clear and CRP very low	CAP	Unconfirmed			
SEP008	84	Female	SOB	Possible sepsis, possible I	8.1	7 days	Alive	No	2x BCs Negal No consolidation, heart failure		6	Unlikely - CXR heart failure and CRP very low	Heart failure	Unconfirmed			
SEP009	87	Female	SOB	Cellulitis	15.4	3 days	Alive	withdrew from study on the 28/05/2021									
SEP010	78	Female	SOB/rigors	cellulitis	20.6	4 days	Alive	No	BCs - Serratia N/A		149	Possible - S aureus and cellulitis and responded to flucloxacillin	Cellulitis	Confirmed			
SEP011	70	Female	SOB	LRTI, Supraglottitis	6.5	1 day	Alive	No	Culture result N/A		less than 1	Unlikely - low CRP	Laryngopharyngeal Reflux	Confirmed			
SEP012	55	Male	SOB	Chest sepsis	27.7	6 days	Alive	No	2x BCs Negal Bilateral changes consistent with bronchiectasis		13	Unlikely - bronchiectasis with Pseudomonas in sputum	Infective exacerbation of his bronchiectasis	Unconfirmed			
SEP013	82	Female	SOB	Acute infection-source unclear	10.9	9 days	Alive	No	2x BCs Negal Bilateral bronchiectasis changes, suspected post COVID changes		33	Unlikely - treated as pulmonary fibrosis	Pulmonary fibrosis	Unconfirmed			
SEP014	79	Male	SOB/cough	Possible PE, possible pneumonia	14.8	7 days	Alive	No	2x BCs Negal Subtle basal changes, possible aspiration pneumonia		32	Unlikely - H influenzae in sputum most likely pathogen	Aspiration pneumonia	Confirmed			
SEP015	60	Male	SOB	Chest sepsis	12.4	3 days	Alive	No	2x BCs Negal Nil acute		3	Unlikely - antibiotics stopped on post take ward round	Stridor caused by bilateral vocal cord palsy	Confirmed			
SEP016	101	Male	Confusion/cough	CAP	7.9	4 days	Alive	No	2x BCs Negal Left lower zone consolidation		8	Possible - CAP but no positive cultures and low CRP	CAP	Confirmed			
SEP017	78	Male	Confusion	LRTI	6.8	5 days	Alive	No	2x BCs post Nil acute		134	No - proven gram negative bacteraemia from urine infection.	Sepsis-no source documented	Confirmed			
SEP018	75	Male	SOB/drowsy	IECOPD	15	2 days	Alive	No	2x BCs post Right lower zone, suspected consolidation		5	Unlikely - low CRP and previous H influenzae in sputum	CAP	Confirmed			
SEP019	21	Female	SOB	Chest sepsis	2.8	6 days	Alive	No	2x BCs Negal Bilateral changes, suspected COVID Pneumonia (NB test positive for COVID)		41	Unlikely - low CRP and CXR changes typical for COVID	COVID-19	Unconfirmed			
SEP020	63	Male	SOB	COPD	15.5	23 days	Dead	No	2x BCs, 1 bilobed Bilateral fibrosis, suspected superadded infective changes		152	Possible - but no positive cultures	Pneumonia	Confirmed			

SOB: Shortness of breath
 CAP: Community-acquired pneumonia
 LRTI: Lower respiratory tract infection
 PE: Pulmonary embolism
 IECOPD: Infective exacerbation of chronic obstructive pulmonary disease
 AKI: Acute kidney injury
 UTI: Urinary tract infection

Table S2:

Patient	WBC upon enrolment (109/L)										Status at Discharge	Vasoactive Infusion	Culture Results	CXR Results	Peak CRP within 48 hours	Gram Positive Infection?	Diagnosis on Discharge	Sepsis status on Discharge			
	normal range 4.5-11	Length of Stay	WBC	Neutrophils	Lymphocytes	Monocytes	Eosinophils	Basophils	Platelets	Hemoglobin											
SEP001	24.5	2 days	12.5	85	10	3	0	0	150	12.5	Alive	No	2x BCs Negal Right basal consolidation		152	Possible - CAP but no positive cultures	CAP	Confirmed			
SEP002	18.8	16 days	10.5	75	15	5	0	0	100	18.8	Alive	No	2x BCs Negal N/A		164	Possible - swab grew S aureus	Sepsis of unknown origin, AKI, hypokalaemia, hyponatraemia, venous leg ulcers	Confirmed			
SEP003	17.7	77 days	11.5	65	20	10	0	0	80	17.7	Alive	Yes	2x BCs Negal Bilateral basal haziness		165	Unlikely - ? Viral exacerbation of asthma.	Infective exacerbation of asthma, metapneumovirus positive, AKI, C. difficile infection, UTI	Confirmed			
SEP004	21.7	1 day	12.5	85	10	3	0	0	150	21.7	Alive	No	2x BCs Negal Slight haziness right side		137	Unlikely	IECOPD	Unconfirmed			
SEP005	5.7	Less than 24 h.	12.5	85	10	3	0	0	150	5.7	Dead	No	2x BCs Negal Bilateral consolidation		156	Possible - severe CAP but no positive cultures	CAP	Confirmed			
SEP006	10.8	1 day	12.5	85	10	3	0	0	150	10.8	Alive	No	2x BCs Negal New consolidation		17	Unlikely - CAP but no positive cultures and low CRP	CAP	Confirmed			
SEP007	9.1	1 day	12.5	85	10	3	0	0	150	9.1	Alive	No	2x BCs Negal Nil acute		6	Unlikely - CXR clear and CRP very low	CAP	Unconfirmed			
SEP008	8.1	7 days	12.5	85	10	3	0	0	150	8.1	Alive	No	2x BCs Negal No consolidation, heart failure		6	Unlikely - CXR heart failure and CRP very low	Heart failure	Unconfirmed			
SEP009	15.4	3 days	12.5	85	10	3	0	0	150	15.4	Alive	withdrew from study on the 28/05/2021									
SEP010	20.6	4 days	12.5	85	10	3	0	0	150	20.6	Alive	No	BCs - Serratia N/A		149	Possible - S aureus and cellulitis and responded to flucloxacillin	Cellulitis	Confirmed			
SEP011	6.5	1 day	12.5	85	10	3	0	0	150	6.5	Alive	No	Culture result N/A		less than 1	Unlikely - low CRP	Laryngopharyngeal Reflux	Confirmed			
SEP012	27.7	6 days	12.5	85	10	3	0	0	150	27.7	Alive	No	2x BCs Negal Bilateral changes consistent with bronchiectasis		13	Unlikely - bronchiectasis with Pseudomonas in sputum	Infective exacerbation of his bronchiectasis	Unconfirmed			
SEP013	10.9	9 days	12.5	85	10	3	0	0	150	10.9	Alive	No	2x BCs Negal Bilateral bronchiectasis changes, suspected post COVID changes		33	Unlikely - treated as pulmonary fibrosis	Pulmonary fibrosis	Unconfirmed			
SEP014	14.8	7 days	12.5	85	10	3	0	0	150	14.8	Alive	No	2x BCs Negal Subtle basal changes, possible aspiration pneumonia		32	Unlikely - H influenzae in sputum most likely pathogen	Aspiration pneumonia	Confirmed			
SEP015	12.4	3 days	12.5	85	10	3	0	0	150	12.4	Alive	No	2x BCs Negal Nil acute		3	Unlikely - antibiotics stopped on post take ward round	Stridor caused by bilateral vocal cord palsy	Confirmed			
SEP016	7.9	4 days	12.5	85	10	3	0	0	150	7.9	Alive	No	2x BCs Negal Left lower zone consolidation		8	Possible - CAP but no positive cultures and low CRP	CAP	Confirmed			
SEP017	6.8	5 days	12.5	85	10	3	0	0	150	6.8	Alive	No	2x BCs post Nil acute		134	No - proven gram negative bacteraemia from urine infection.	Sepsis-no source documented	Confirmed			
SEP018	15	2 days	12.5	85	10	3	0	0	150	15	Alive	No	2x BCs post Right lower zone, suspected consolidation		5	Unlikely - low CRP and previous H influenzae in sputum	CAP	Confirmed			
SEP019	2.8	6 days	12.5	85	10	3	0	0	150	2.8	Alive	No	2x BCs Negal Bilateral changes, suspected COVID Pneumonia (NB test positive for COVID)		41	Unlikely - low CRP and CXR changes typical for COVID	COVID-19	Unconfirmed			
SEP020	15.5	23 days	12.5	85	10	3	0	0	150	15.5	Dead	No	2x BCs, 1 bilobed Bilateral fibrosis, suspected superadded infective changes		152	Possible - but no positive cultures	Pneumonia	Confirmed			

