

1 Cell type profile variation in menstrual effluent by sample collection method identified
2 using methylation cytometry

3

4 Authors: Irma M. Vlasac¹, Hannah G. Stolrow¹, Zaneta M. Thayer², Brock C.
5 Christensen^{1,3}, Luisa Rivera²

6

7 ¹ Department of Epidemiology, Geisel School of Medicine at Dartmouth, Lebanon, NH
8 03756, USA

9 ² Department of Anthropology, Dartmouth College, Hanover, NH 03755, USA

10 ³ Department of Molecular and Systems Biology, Geisel School of Medicine at
11 Dartmouth, Lebanon, NH 03756, USA

12

13 **Abstract**

14 Menstrual effluent cell profiles have potential as noninvasive biomarkers of female
15 reproductive and gynecological health and disease. We used DNA methylation-based
16 cell type deconvolution (methylation cytometry) to identify cell type profiles in self-
17 collected menstrual effluent. During the second day of their menstrual cycle healthy
18 participants collected menstrual effluent using a vaginal swab, menstrual cup, and pad.
19 Immune cell proportions were highest in menstrual cup samples, and epithelial cells
20 were highest in swab samples. Our work demonstrates the feasibility and utility of
21 menstrual effluent cell profiling in population-level research using remotely collected
22 samples and DNA methylation.

23

24 **Introduction**

25 Human females with access to birth control menstruate approximately 400 times during
26 their reproductive lifespan¹, from menarche in early adolescence around 12 years of
27 age, continuing until menopause at approximately 40-50 years of age. Menstruation is a
28 result of a complex and highly specific system regulated hormonally through the
29 hypothalamus, pituitary, and ovarian endocrine axis, and disruption to the menstrual
30 cycle can be indicative of underlying health issues. As an example, irregular and long
31 menstrual cycles are associated with a range of adverse conditions, including ovarian
32 cancer² and greater risk of premature mortality³. Menstrual effluent is comprised of the
33 shed uterine lining developed during the secretory phase of the menstrual cycle as well as cells
34 from the cervix and vagina. As such, menstrual effluent may be a powerful proxy tissue for the
35 endometrium, with recent work finding considerable overlap between menstrual and
36 endometrial cytokine levels, cellular composition, and gene expression profiles^{4,5}. Research
37 on menstrual effluent has begun to investigate its potential as an informative
38 biospecimen in women's health research. Studies to date have focused on elucidating
39 inflammatory profiles and identifying perinatal biomarkers of fertility and
40 endometriosis⁵⁻⁷, and as a determinant of adverse pregnancy outcomes. In addition,
41 despite significant disease burden there are no current non-invasive screening tools for
42 ovarian cancer, endometrial cancer, or endometriosis.

43
44 Methylation cytometry methods can determine the cell-type admixture of biospecimens
45 with cell reference profiles of DNA methylation and statistical deconvolution. Methylation
46 cytometry methods exist for multiple biospecimen types but have not been applied to

47 menstrual effluent. The hierarchical tumor immune microenvironment epigenetic
48 deconvolution (HiTIMED) algorithm quantifies up to 17 cell types and can be used to
49 estimate cell types in both tumor and non-tumor normal tissues⁸. HiTIMED developed
50 20 tissue-specific cell reference deconvolution libraries, including endometrial tissue,
51 from which menstrual effluent is shed directly from the endometrium of the uterus. We
52 demonstrate the utility and feasibility of DNA-based cell type profiling in menstrual
53 effluent in healthy females across three collection methods: menstrual cup, menstrual
54 pad, and vaginal swab.

55

56 **Materials and Methods**

57

58 **Study Participants and Samples**

59 Healthy study participants (n=12) were recruited through campus flyers, online
60 communities, and in-person recruitment as part of an IRB-approved study at Dartmouth
61 College. Written consent was obtained, and study participants were screened based on
62 the following eligibility criteria: 18 years of age and older, regular menstrual cycles, no
63 current use of hormonal birth control, no history of reproductive disorders (PCOS,
64 endometriosis, adenomyosis, gynecologic cancers), and no immunomodulatory therapy.
65 Participants completed two questionnaires: health history, and menstrual questionnaire
66 completed at the time of sample collection. Study kits were mailed to participants and
67 contained supplies for menstrual pad, vaginal swab, and menstrual cup self-collection
68 along with instructions to minimize variability among collection methods. Participants

69 were instructed to collect samples on the second day of their period, defined as the
70 second day following the onset of bleeding.

71

72 For swab collection, participants were instructed to insert the swab (*Puritan HydraFlock*,
73 #25-3406-H) into their vagina and hold for 15 seconds or until completely saturated. The
74 swab was placed in a 4 mL self-standing centrifuge tube containing 2 mL of DNA/RNA
75 shield (*Zymo*, #R1100-250). This process was repeated twice for the collection of two
76 swabs. To collect the pad sample, participants were provided with an organic cotton
77 liner (*natracare*, #3145), with a cut 2 x 2-inch square liner secured on top. Participants
78 were instructed to wear the liner until the square was completely saturated, which was
79 estimated to take approximately 5 minutes but may have varied amongst participants.
80 Once the square was saturated, using the provided tweezers, participants removed the
81 saturated square and placed it in a 4 mL self-standing centrifuge tube containing 2 mL
82 of DNA/RNA shield (*Zymo*, # R1100-250). The menstrual cup (*NeoProMedical*,
83 #B092DTN2XS) was worn for sample collection after which a disposable pipette was
84 used to aliquot 2 mL of menstrual effluent into a 4 mL self-standing centrifuge tube
85 containing 2 mL of DNA/RNA shield (*Zymo*, #R1100-250). Participants were instructed
86 to wear nitrile gloves for all collection modes and place samples in a biohazard
87 collection bag before packaging them in the return box.

88

89 **DNA Extraction and Methylation Analysis**

90 DNA was extracted from menstrual cup samples using Qiagen DNeasy Blood and
91 Tissue kit protocol, following manufacturers protocol for extraction from blood samples.

92 DNA was extracted from menstrual pads by cutting a 1x1 centimeter piece of the
93 saturated menstrual pad sample, then using it as the base material for extraction using
94 the Qiagen DNA Investigator's Kit. DNA was extracted from vaginal swab samples by
95 removing the swab from the plastic swab base, then using the swab material as the
96 base material for extraction using the Qiagen DNA Investigator's Kit. DNA was extracted
97 from a total of 36 samples, three samples per participant with 12 participants assessed
98 in total. Extracted DNA samples were bisulfite modified using the EZ DNAm Kit (Zymo
99 Research) following the manufacturers optimized protocol for Illumina Methylation
100 arrays⁹. Bisulfite converted DNA was arrayed on the Infinium MethylationEPIC
101 BeadChip V2 array at the Dartmouth Cancer Center Genomics and Molecular Biology
102 Shared Resource.

103

104 **Data Processing and Quality Control**

105 MethylationEPICv2 Intensity data (IDATs) were preprocessed for normal exponential
106 out-of-band (Noob) correction using Minfi¹⁰. Quality control was performed using a
107 detection P, CpG, and sample threshold of 5%, with zero samples demonstrating a
108 percentage of low quality CpG values greater than 5%. Beta value technical replicates
109 were collapsed by averaging probes with common probe ID prefixes using SeSAmE¹¹.
110 Single nucleotide polymorphisms (SNPs), probes were used as a quality control metric
111 to assess concordance amongst sample type and participant. Non-CpG cytosine
112 methylation, cancer somatic mutation probes, and probes located on sex chromosomes
113 were filtered. Beta values were normalized using beta mixture quantile normalization
114 (BMIQ). For quality control, sample matching was confirmed using SNP probes.

115

116 **Statistical Analysis**

117 Cell proportions were estimated using Hierarchical Immune Tumor Deconvolution
118 (HiTIMED)⁸, designated at deconvolution level four, set to non-tumor normal tissue with
119 the uterine carcinoma deconvolution library. Cell proportions from each sample type
120 (menstrual pad, menstrual cup, vaginal swab) were assessed for significant differences
121 between the three collection sample types using a Kruskal-Wallis test. Unsupervised
122 hierarchical clustering was performed using the top 20,000 most variable CpGs. A
123 Recursively Partitioned Mixture Model (RPMM)¹² was fit using the 20,000 most variably
124 methylated CpGs to identify subgroups within the methylation data. Association of
125 RPMM cluster membership with sample collection method was tested with a Fisher's
126 exact test.

127

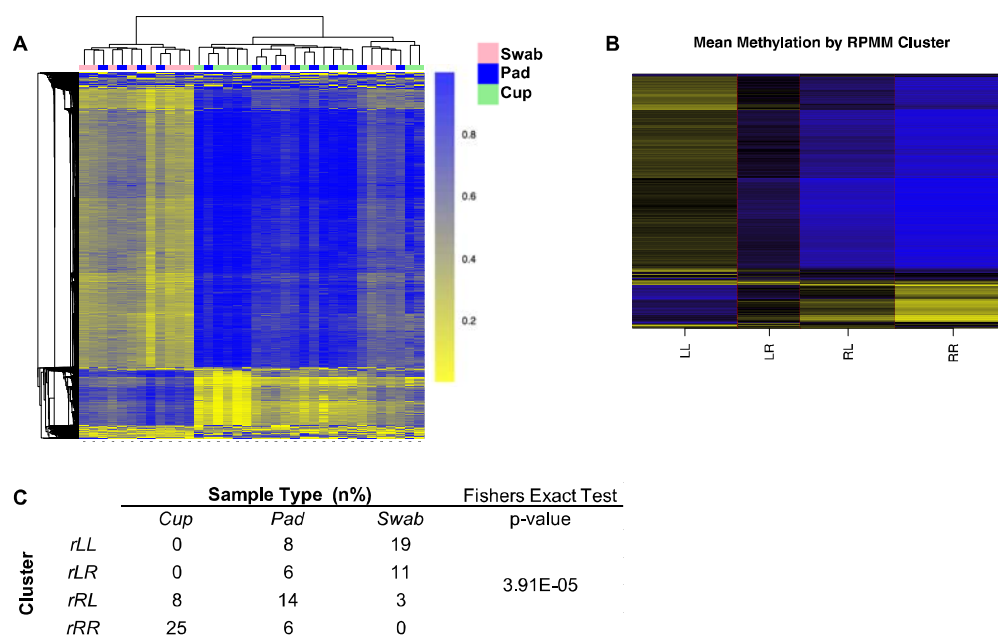
128 **Results**

129 DNA methylation data from each collection method matched to a total of twelve study
130 participants (**Supplementary Table 1**) was visualized with unsupervised hierarchical
131 clustering of the 20,000 most variably methylated CpGs (**Figure 1A**). To test
132 associations of methylation with sample collection method, a recursively partitioned
133 mixture model was fit to the 20,000 most variably methylated CpGs (**Figure 1B**),
134 resulting in four clusters. The majority of cup samples (75%) were in cluster rRR, and
135 sample collection method was significantly associated with methylation cluster
136 membership (Fisher's Exact $P=3.9E-05$, **Figure 1C**).

137

138

139



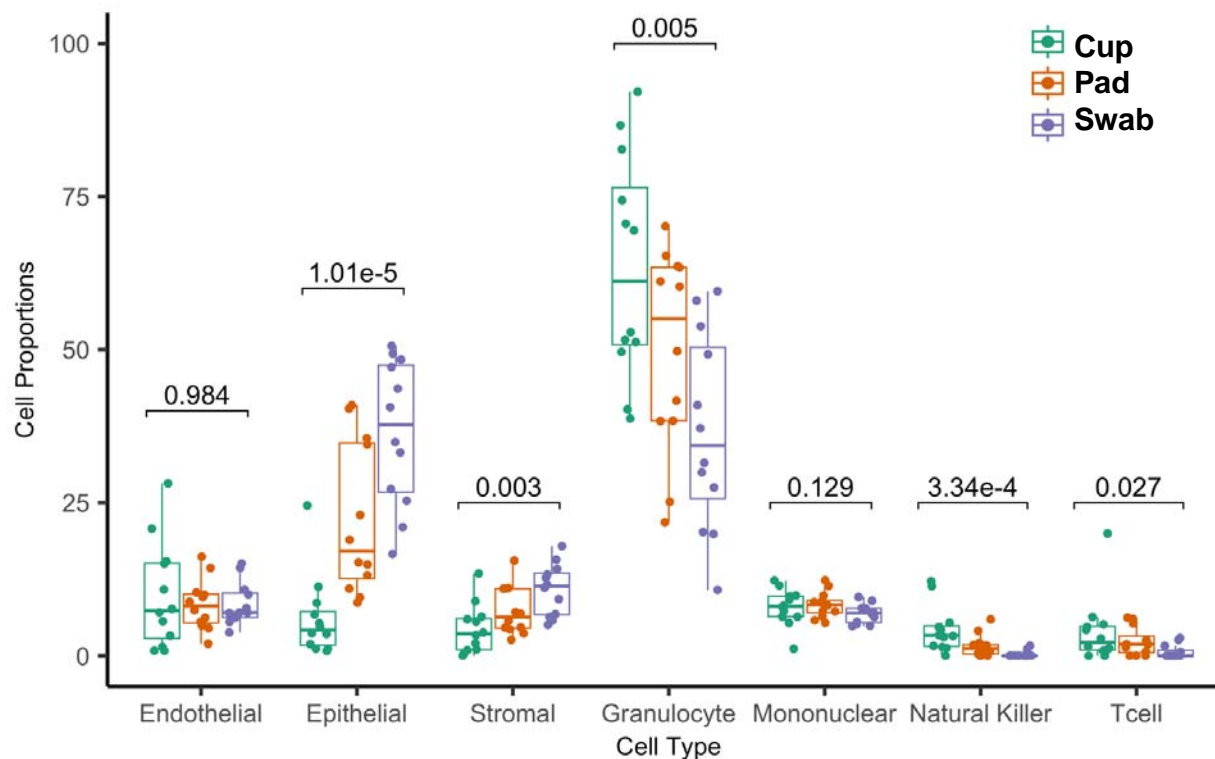
140

141 **Figure 1.** A) Unsupervised hierarchical clustering based on top 20,000 most variable
 142 CpGs. B) Recursively Partitioned Mixture Model (RPMM) with mean methylation
 143 displayed in each of the four clusters. C) table of RPMM cluster membership by sample
 144 type.

145

146 Menstrual effluent cell type proportions were estimated using HiTIMED in all samples
 147 and compared among collection methods. Epithelial and stromal cell proportions were
 148 significantly higher in swab samples compared to pad samples, with cup samples
 149 demonstrating the lowest epithelial and stromal cell proportions; cup samples had
 150 significantly higher granulocyte, natural killer, and T cell proportions compared to swab
 151 samples ($P < 0.05$, Kruskal-Wallis test, **Figure 2**).

152



153
154 **Figure 2.** Menstrual effluent cell type proportions differ among menstrual cup, menstrual
155 pad, and vaginal swab collection methods as determined by methylation cytometry.

156
157 **Discussion**

158 Our work demonstrates the utility of cell type profiling in menstrual effluent with
159 methylation cytometry for research applications in female reproductive and
160 gynecological health and disease. Methylation cytometry cell deconvolution analysis
161 identified cell type proportion differences by sample collection method. Menstruation is a
162 process of tissue inflammation and is marked by an increase in myeloid immune cells
163 and leukocytes recruited in response to inflammation from necrotizing and shedding
164 tissue^{13,14}. Menstrual cup samples had the highest immune cell proportions, specifically
165 granulocyte, natural killer, and T cell proportions in comparison to menstrual pad and

166 vaginal swab samples. Considering diseases marked by abnormally high inflammation,
167 such as endometriosis, future studies utilizing menstrual effluent should consider
168 collection method as it relates with the study goals and hypotheses. Studies aimed at
169 elucidating immune cell profiles with gynecologic health and disease may be better
170 powered to discern effects with menstrual cup and pad collection methods. Similarly,
171 studies which may be more focused on assessing conditions that affect epithelial and
172 stromal cells of the cervix or vagina, may favor menstrual pads or vaginal swabs for
173 sample collection. In any case, application of methylation cytometry methods enables
174 investigation of cell-type-dependent and cell-type-independent associations with health
175 and disease.

176
177 We expected cell type proportion differences based on collection method similarly to
178 how we observed them. The vaginal swab collection method had higher epithelial cell
179 proportions, which is likely related to the method of sample collection considering the
180 participant collected the sample shallowly within the vaginal canal as opposed to closer
181 to the cervix. Similarly, the menstrual pad collection likely demonstrates higher epithelial
182 cell proportions considering the shed menstrual effluent travels through the vaginal
183 canal and vulva before being absorbed on the menstrual pad. While menstrual cup
184 sample collections demonstrate the highest immune cell proportions compared to other
185 sample collection methods, menstrual effluent collected by menstrual pad holds great
186 promise for future research studies given it captures cell types from the immune,
187 epithelial, and stromal cell compartments. Considering menstrual pad collection is the
188 only method of collection that doesn't require insertion, it allows for a truly non-invasive,

189 non-penetrative sample collection, allowing for sample collection from adolescents and
190 individuals that may not want to use an insertional collection method. As menstrual pads
191 can easily and inexpensively be shipped in the mail and are widely available, they may
192 provide greater potential in the scope of population level studies and studies conducted
193 in resource limited populations. Use of DNA-based cell typing in menstrual effluent
194 samples combined with remote, noninvasive sampling methods potentiate both
195 research and future clinical applications of menstrual effluent specimens that benefit
196 women's health.

197

198 **Supplementary Table 1**

Characteristic	Participants (N = 12)
Age (%)	
18 - 25	7 (58.3)
26 - 35	2 (16.7)
> 35	3 (25.0)
<i>Average Age</i>	27
Parity (%)	
Nulliparous	8 (66.7)
Multiparous	4 (33.3)
Menstrual Pain (%)	
Not painful	1 (8.3)
A little painful	4 (33.3)
Somewhat painful	6 (50.0)
Very painful	1 (8.3)
Recent Illness (%)	
No	11 (91.7)
Yes	1 (8.3)
Pain Medication (%)	
None	9 (75.0)
Ibuprofen	3 (25.0)

199

200

201

202 **Declarations**

203

204 Ethics approval and consent to participate

205

206 Availability of data and materials

207

208 Funding

209

210

211 Author's contributions

212 LR and ZMT designed the study. IMV and HGS processed samples. IMV performed the
213 analysis and drafted the manuscript. All authors contributed to and approved the final
214 manuscript. Thank you to Claire Pingitore and Sovi Mya-Wellons for their assistance in
215 assembling and sending study kits.

216

217

218 **References**

219 1. Jabbour, H. N., Kelly, R. W., Fraser, H. M. & Critchley, H. O. D. Endocrine Regulation
220 of Menstruation. *Endocrine Reviews* **27**, 17–46 (2006).

221 2. Cirillo, P. M., Wang, E. T., Cedars, M. I., Chen, L. & Cohn, B. A. Irregular menses
222 predicts ovarian cancer: Prospective evidence from the Child Health and
223 Development Studies. *International Journal of Cancer* **139**, 1009–1017 (2016).

224 3. Wang, Y.-X. *et al.* Menstrual cycle regularity and length across the reproductive
225 lifespan and risk of premature mortality: prospective cohort study. *BMJ* **371**, m3464
226 (2020).

- 227 4. Tortorella, C. *et al.* Interleukin-6, interleukin-1 β , and tumor necrosis factor α in
228 menstrual effluents as biomarkers of chronic endometritis. *Fertility and Sterility* **101**,
229 242–247 (2014).
- 230 5. Warren, L. A. *et al.* Analysis of menstrual effluent: diagnostic potential for
231 endometriosis. *Molecular Medicine* **24**, 1 (2018).
- 232 6. Naseri, S., Rosenberg-Hasson, Y., Maecker, H. T., Avrutsky, M. I. & Blumenthal, P. D.
233 A cross-sectional study comparing the inflammatory profile of menstrual effluent vs.
234 peripheral blood. *Health Science Reports* **6**, e1038 (2023).
- 235 7. Nayyar, A. *et al.* Menstrual Effluent Provides a Novel Diagnostic Window on the
236 Pathogenesis of Endometriosis. *Frontiers in Reproductive Health* **2**, (2020).
- 237 8. Zhang, Z. *et al.* HiTIMED: hierarchical tumor immune microenvironment epigenetic
238 deconvolution for accurate cell type resolution in the tumor microenvironment using
239 tumor-type-specific DNA methylation data. *Journal of Translational Medicine* **20**, 516
240 (2022).
- 241 9. Campan, M., Weisenberger, D. J., Trinh, B. & Laird, P. W. MethyLight. *Methods Mol*
242 *Biol* **507**, 325–337 (2009).
- 243 10. Aryee, M. J. *et al.* Minfi: a flexible and comprehensive Bioconductor package for
244 the analysis of Infinium DNA methylation microarrays. *Bioinformatics* **30**, 1363–1369
245 (2014).
- 246 11. Zhou, W., Triche, T. J., Jr, Laird, P. W. & Shen, H. SeSAME: reducing artifactual
247 detection of DNA methylation by Infinium BeadChips in genomic deletions. *Nucleic*
248 *Acids Research* **46**, e123 (2018).

- 249 12. Koestler, D. C., Marsit, C. J., Christensen, B. C., Kelsey, K. T. & Houseman, E. A.
250 A recursively partitioned mixture model for clustering time-course gene expression
251 data. *Translational cancer research* **3**, 217 (2014).
- 252 13. Salamonsen, L. A. Tissue injury and repair in the female human reproductive
253 tract. *Reproduction* **125**, 301–311 (2003).
- 254 14. Finn, C. A. Implantation, Menstruation and Inflammation. *Biological Reviews* **61**,
255 313–328 (1986).
- 256
257
258