

1  
2  
3  
4

## 5 COVID-19 Impact on Patients with Immune-Mediated 6 Rheumatic Disease: A Comparative Study of Disease Activity 7 and Psychological Well-Being Over Six Months

8 Claudia Marques<sup>1\*</sup>¶, Marcelo M Pinheiro<sup>2¶</sup>, Jennifer Lopes<sup>3&</sup>, Sandra Lúcia Euzébio  
9 Ribeiro<sup>4&</sup>, Mary Vânia Marinho de Castro<sup>4&</sup>, Lilian David de Azevedo Valadares<sup>5&</sup>,  
10 Aline Ranzolin<sup>5&</sup>, Nicole Pamplona Bueno de Andrade<sup>6&</sup>, Rafaela Cavalheiro do  
11 Espírito Santo<sup>6&</sup>, Nafice Costa Araújo<sup>7&</sup>, Cintya Martins Vieira<sup>8&</sup>, Valéria Valim<sup>9&</sup>,  
12 Flavia Patricia Sena Teixeira Santos<sup>10&</sup>, Laurindo Ferreira da Rocha Junior<sup>11&</sup>,  
13 Adriana Maria Kakehasi<sup>10¶</sup>, Ana Paula Monteiro Gomides Reis<sup>12¶</sup>, Edgard Torres  
14 dos Reis-Neto<sup>2¶</sup>, Gecilmara Salviato Pileggi<sup>2¶</sup>, Gilda Aparecida Ferreira<sup>10¶</sup>, Licia  
15 Maria Henrique da Mota<sup>13¶</sup>, Ricardo Machado Xavier<sup>6¶</sup>.

16

- 17 1. Department of Rheumatology, Hospital das Clínicas da Universidade Federal de Pernambuco/Ebserh,  
18 Recife, Pernambuco, Brazil  
19 2. Department of Rheumatology, Escola Paulista de Medicina/ Universidade Federal de São Paulo  
20 (EPM/ UNIFESP), São Paulo, Brazil  
21 3. Postgraduate Program of Translational Health – Universidade Federal de Pernambuco.  
22 4. Department of Rheumatology, Faculdade de Medicina da Universidade Federal do Amazonas,  
23 Manaus, Amazonas, Brazil  
24 5. Department of Internal Medicine, Hospital Getúlio Vargas, Recife, Pernambuco, Brazil  
25 6. Department of Rheumatology, Hospital de Clínicas de Porto Alegre / Universidade Federal do Rio  
26 Grande do Sul, Porto Alegre, Rio Grande do Sul, Brazil  
27 7. Department of Rheumatology, Hospital do Servidor Público Estadual de São Paulo - Instituto de  
28 Assistência Médica ao Servidor Público Estadual, São Paulo, Brazil  
29 8. Department of Rheumatology, Hospital Universitário da Universidade Federal de Juiz de Fora, Juiz de  
30 Fora, Minas Gerais, Brazil  
31 9. Department of Rheumatology, Universidade Federal de Sergipe  
32 10. Department of Rheumatology, Hospital das Clínicas - Universidade Federal de Minas Gerais, Belo  
33 Horizonte, Minas Gerais, Brazil  
34 11. Department of Rheumatology, Instituto de Medicina Integral Professor Fernando Figueira, Recife,  
35 Pernambuco, Brazil  
36 12. Department of Rheumatology, Centro Universitário de Brasília  
37 13. Department of Rheumatology, Universidade de Brasília

38

39

40 33 \* Corresponding author:

41

42 34 E-mail: [claudia.reumatologia@gmail.com](mailto:claudia.reumatologia@gmail.com) (CM)

43

44 3

45

46 37 ¶These authors contributed equally to this work.

47

48 38 &These authors also contributed equally to this work

49

50

NOTE: This preprint reports new research that has not been certified by peer review and should not be used to guide clinical practice.

## 51 **Abstract**

52 **Objectives:** To compare the impact of COVID-19 on clinical status and psychological  
53 condition in patients with immune-mediated rheumatic diseases (IMRD) infected by  
54 SARS-CoV-2 with IMRD controls not infected, during a 6-month follow-up.

55 **Methods:** The ReumaCoV Brasil is a longitudinal study designed to follow-up IMRD  
56 patients for 6 months after COVID-19 (cases) compared with IMRD patients no COVID-  
57 19 (controls). Clinical data, disease activity measurements and current treatment  
58 regarding IMRD, and COVID-19 outcomes were evaluated in all patients. Disease  
59 activity was assessed through validated tools at inclusion and at 3 and 6 months post-  
60 COVID-19. The FACIT-F (Functional Assessment of Chronic Illness Therapy) and  
61 DASS 21 (Depression, Anxiety and Stress Scale - 21 Items) questionnaires were also  
62 applied at 6 months after COVID-19 in both groups before large-scale vaccination. The  
63 significance level was set as  $p < 0.05$ , with a 95% confidence interval.

64 **Results:** A total of 601 patients were evaluated, being 321 cases (IMRD COVID-19+)  
65 and 280 controls (IMRD COVID-19 -), predominantly female with similar median age.  
66 No significant differences were noted in demographic data between the groups, including  
67 comorbidities, disease duration, and IMRD. Disease activity assessment over a 6-month  
68 follow-up showed no significant difference between cases and controls. While mean  
69 activity scores did not differ significantly, some patients reported worsened disease  
70 activity post-COVID-19, particularly in rheumatoid arthritis (RA) (32.2%) and systemic  
71 lupus erythematosus (SLE) (23.3%). Post-COVID-19 worsening in RA patients  
72 correlated with medical global assessment (MGA) and CDAI scores, with a moderate to  
73 large effect size. Diabetes mellitus showed a positive association (OR=7.15), while TNF  
74 inhibitors showed a protective effect (OR=0.51). Comparing SLEDAI pre- and post-

75 COVID-19, a minority showed increased scores, with few requiring treatment changes.  
76 Fatigue, depression, anxiety, and stress were significantly higher in cases compared to  
77 controls. Worsening disease activity post-COVID correlated with worsened FACIT-F  
78 and DASS-21 stress scale in RA patients. No significant associations were found  
79 between COVID-19 outcomes and post-COVID-19 disease activity or psychological  
80 assessments.

81 **Conclusions:** Post-COVID-19 IMRD patients show significant psychological well-  
82 being deterioration despite similar disease activity scores. The variability in reports on  
83 IMRD flares and the potential trigger of SARS-CoV-2 for autoimmune manifestations  
84 underline the need for detailed clinical assessment and a comprehensive approach to  
85 managing them.

## 86 **Introduction**

87 The COVID-19 pandemic caused by the SARS-CoV-2 virus represents one of  
88 the greatest public health challenges worldwide. The infection has raised concerns  
89 about how the disease behaves in patients with immune-mediated rheumatic diseases  
90 (IMRD), particularly in terms of flares after infection and immunosuppressive  
91 treatment as potential risk factors for COVID-19 severity. Since 2020, much  
92 information has been published about the understanding of this association and its  
93 implications, but few studies have evaluated rheumatic disease flare prospectively post-  
94 COVID-19 (1) and existing data are still controversial.

95 Some individuals with immune-mediated rheumatic diseases (IMRD) may  
96 experience exacerbation following SARS-CoV-2 infection. However, uncertainties  
97 persist regarding whether these exacerbations are directly linked to disease activity or  
98 represent manifestations associated with COVID-19 itself. The phenomenon

99 commonly referred to as "Long COVID" has been associated with a diverse range of  
100 clinical manifestations, encompassing joint pain, fatigue, and psychological symptoms  
101 like depression and anxiety, which can endure for several months post-infection [2]. In  
102 patients with IMRD, the presence of these symptoms may be connected to disease  
103 flares, introducing ambiguity in determining the appropriate course of treatment.  
104 Additionally, some authors have highlighted psychosomatic aspects or a fibromyalgia-  
105 like presentation, particularly as the prevalence increased following the initial wave of  
106 the pandemic. This increase appears to be more correlated with heightened fears,  
107 uncertainties, and lockdown strategies, as biological abnormalities such as impaired  
108 immune response or viral persistence have not been conclusively identified yet (2).

109 This study aimed to assess the disease activity status in patients with immune-  
110 mediated rheumatic diseases (IMRD) who had experienced COVID-19, comparing  
111 them to those who did not contract the virus, over a 6-month follow-up period.  
112 Furthermore, the objective was to delineate the prevalence of fatigue and psychological  
113 disorders, including depressive symptoms, anxiety, and stress, and to investigate the  
114 potential association of these symptoms with IMRD flares.

## 115 **Materials and Methods**

### 116 **Study design – ReumaCoV Brasil Cohort**

117 This paper presents the protocol for the ReumaCoV-Brasil Registry protocol as  
118 described elsewhere (3). Briefly, a prospective observational cohort was carried out in  
119 13 university centers distributed along all five Brazilian geographic regions, including  
120 patients with IMRD and COVID-19 and a comparison group (patients with only  
121 IMRD), with a follow-up time of 6 months. Patients were evaluated in three consecutive  
122 visits: visit 1 (inclusion), visit 2 (3 months) and visit 3 (6 months), from May to

123 December 2020. Disease activity status in the medical record of the most recent  
124 consultation, carried out at least in the last 6 months before inclusion, was considered  
125 as pre-COVID status. The post-COVID status was that which the patient presented at  
126 inclusion in the study.

### 127 **Disease activity evaluation**

128 In all visits, data related to disease activity was collected, using specific validated  
129 instrument, mentioned here are those included in this analysis: Clinical Disease  
130 Activity Index (CDAI)(4) for RA patients, Systemic Lupus Erythematosus Disease  
131 Activity Index 2000 (SLEDAI-2k) (5)in SLE patients, Bath Ankylosing Spondylitis  
132 Disease Activity Index (BASDAI)(6) for patients with SpA. Besides the activity scores,  
133 medical global assessment (MGA) and patient global assessment (PGA) were collected  
134 regarding disease activity, using a visual analogue scale (VAS) from 0 to 10 points,  
135 being 10 the better score, and the patient opinion regarding DRIM worst since the last  
136 visit, also using a VAS from 0 to 10.

### 137 **Disease flare definition**

- 138 - Rheumatoid arthritis: worsening of symptoms compared to the pre-COVID-19  
139 state plus an increase of 4.5 points in the CDAI and/or need to change treatment  
140 (7).
- 141 - Systemic Lupus Erythematosus: worsening of symptoms compared to the pre-  
142 COVID-19 state plus an increase at least 4 points in the SLEDAI and/or need  
143 to change treatment (8).
- 144 - Spondyloarthritis: worsening of symptoms compared to the pre-COVID-19  
145 state plus an increase at least 2 points in BASDAI and/or need to change  
146 treatment(9).

## 147 **Psychological distress evaluation**

148 At visit 3, two questionnaires were administered: one to assess fatigue, using  
149 The Functional Assessment of Chronic Illness Therapy – Fatigue Scale (FACIT-F)(10),  
150 and other to assess mental symptoms, using The Depression, Anxiety and Stress Scale  
151 (DASS-21)(11).

152 The FACIT-F Scale is a short, 13-item tool that measures an individual's level  
153 of fatigue during their usual daily activities over the past week. The level of fatigue is  
154 measured on a four-point Likert scale (4 = not at all fatigued to 0 = very much fatigued).  
155 The score varies from 0 to 52, and the lower the result, the higher the level of fatigue.

156 DASS-21 is used as a quantitative measure of distress along the 3 axes of  
157 depression (D), anxiety (A) and stress (S) reactions and management. Each of the  
158 questions is rated from 0 to 3. Therefore, each of the axes presents partial scores of 0  
159 to 18-24 depending on the number of questions assigned.

160 The study was registered at Brazilian Registry of Clinical Trials RBR-33YTQC  
161 and approved by the Brazilian National Research Council (CONEP) under number  
162 3.955.206. All participants were requested to provide explicit opt-in consent prior to  
163 participating in the survey.

164

## 165 **Statistical analysis**

166 The Kolmogorov Smirnov test was performed to verify the normal distribution  
167 of continuous variables. As non-normality was verified, the median was used as a  
168 measure of central tendency with the respective interquartile range (IQR).

169 To verify the association among categorical or continuous variables, the chi-  
170 square or Fisher test and Pearson test were used, respectively. The Mann-Whitney test

171 was used to compare means and to estimate the effect size by calculating the r index  
172 and the R squared ( $R^2$ ). The r index was used to evaluate the correlation between two  
173 variables: small effect size: 0.10; medium effect size: 0.30 and large effect size: 0.50.

174 To determine the effect size (ES) for comparing means, Cohen's d test was used,  
175 interpreted as follows: 0.2 to 0.3 for small effect (the difference between the groups is  
176 subtle); around 0.5 as medium effect (moderate difference between the groups) and 0.8  
177 or more as large effect (substantial difference between the groups). To compare the  
178 variables across three visits, the One-way Anova test (CI 95%) was used for repeated  
179 measures.

180 For this analysis, the SPSS statistical package, version 29.0.2.0 and the Graph  
181 Pad Prism software, Version 10.1.1 (270), November 21, 2023, were used. The  
182 significance level was set at  $p < 0.05$ , with 95% confidence interval.

183

## 184 **Results**

185 A total of 601 patients were evaluated, including 321 cases (IMRD COVID+)  
186 and 280 controls (IMRD COVID-), with the majority being female with similar median  
187 age. No differences were observed regarding demographic data between the two  
188 groups, including comorbidities, disease duration and IMRD. A higher frequency of  
189 social isolation was observed in the control group ( $p=0.001$ ), as well as they were on  
190 TNFi treatment ( $p=0.003$ ). Table 1 summarizes the clinical and demographic data at  
191 baseline.

192

193

194

195 Table 1. Clinical and demographic data of the sample, comparing IMRD patients with COVID-  
196 19 versus without COVID-19 at baseline. Chi square test, unless otherwise noted.

	Cases (IMRD COVID +) n=321		Controls (IMRD COVID -) N=280		P-value
	n	%	n	%	
<b>Female</b>	275	85.7	237	84.6	0.724
<b>Age (median, IQR)</b>	46 (37-57)		49 (38-57)		0.136**
<b>Ethnicity</b>					
<i>White</i>	105	32.7	99	35.3	0.601
<i>Non-white</i>	216	67.3	181	64.7	
<b>Instruction</b>					
<i>Illiterate</i>	1	0.3	2	0.7	0.631
< 8 years	78	24.3	74	26.5	
> 8 years	242	75.4	204	72.8	
<b>Profession</b>					
<i>Public attendance</i>	41	12.8	33	11.7	<b>0.030</b>
<i>Health</i>	34	10.6	13	4.7	
<i>Security</i>	8	2.5	3	1.1	
<i>Education</i>	32	10.0	25	9.0	
<i>Housewife</i>	90	28.1	77	27.6	
<i>Others</i>	116	36.0	129	45.9	
<b>Active at work</b>	166	51.9	125	44.8	0.084
<b>Social isolation</b>	162	50.5	188	67.1	<b>0.001</b>
<b>Comorbidities</b>					
<i>Hypertension</i>	123	38.3	120	42.9	0.258
<i>Obesity</i>	48	15.0	34	12.1	0.317
<i>Diabetes</i>	31	9.7	22	7.9	0.438
<i>Lung disease</i>	20	6.2	16	5.7	0.790
<i>Kidney disease</i>	20	6.2	16	5.7	0.790
<i>Cardiopathy</i>	12	4.3	13	4.6	0.734
<i>No comorbidities</i>	107	33.3	99	35.4	0.602
<b>Smoking</b>	11	3.7	15	4.6	0.580
<b>Ethilism</b>	10	3.1	8	2.8	0.835
<b>Diagnosis</b>					
<i>SLE</i>	137	42.5	112	39.4	0.183
<i>RA</i>	93	28.9	105	37.0	
<i>Axial SpA</i>	23	7.1	30	10.6	
<i>Psoriatic arthritis</i>	21	6.5	12	36.4	
<i>Systemic sclerosis</i>	17	5.3	10	3.6	
<i>Sjögren disease</i>	12	3.7	5	1.8	
<i>Miopathy</i>	7	2.2	2	0.7	
<i>Others</i>	11	3.4	4	1.4	
<b>Disease duration, years (median, IQR)</b>	10 (5-15)		10 (6-18)		0.146**
<b>Medication IMRD</b>					
<i>Hydroxychloroquine</i>	139	43.3	113	40.4	0.465
<i>Oral corticosteroid</i>	137	42.7	109	38.9	0.351
<i>Methotrexate</i>	72	22.4	73	26.1	0.298
<i>TNFi</i>	61	19.0	82	29.3	<b>0.003</b>
<i>Azathioprine</i>	48	15.0	30	10.7	0.123
<i>Leflunomide</i>	36	11.2	23	8.2	0.217
<i>Mycophenolate mofetil</i>	28	8.7	24	8.6	0.948
<i>Tocilizumab</i>	14	4.4	23	8.2	0.050
<i>Rituximab</i>	5	1.6	6	2.1	0.762*
<i>IL-17i</i>	8	2.5	2	0.7	0.115*
<i>JAKi</i>	8	2.5	4	1.4	0.396*
<i>Abatacept</i>	4	1.2	2	0.7	0.690*
<i>Belimumab</i>	3	0.9	3	1.1	0.591*
<i>Cyclophosphamide (pulse therapy)</i>	3	0.9	3	1.1	1.000*
<i>Sulfasalazine</i>	3	0.9	6	2.1	0.316*

197 Chi square test, unless otherwise noted. \*Fisher exact test; \*\*Mann-Whitney test; CI 95%. SLE: systemic lupus erythematosus; RA:  
198 rheumatoid arthritis; Axial SpA: axial spondyloarthritis; Pso arthritis: psoriatic arthritis; TNFi: tumour necrosis factor inhibitor; IL-17i:  
199 interleucine 17 inhibitor; JAKi: janus kinase inhibitor

200



201 In the group of patients with COVID-19 (n=321), the most frequent symptoms  
202 were headache (60.6%), fever (55.6%), dysgeusia (54.3%), asthenia (53.7%), anosmia  
203 (52.5%) and cough (49.1%). Dyspnea was reported in 35.1% of cases. The medications  
204 used to treat COVID-19 were analgesics (53.7%), azithromycin (40.7%), oral  
205 corticosteroids (20.2%) and hydroxychloroquine (10.2%), but 16.1% did not use any  
206 medication.

207 Regarding COVID-19 outcomes, hospital care was sought by 77 (23.9%)  
208 patients and 29 (9.0%) were hospitalized. Of these, 3 patients were admitted to the  
209 intensive care unit and used mechanical ventilation. None of the patients died.

210

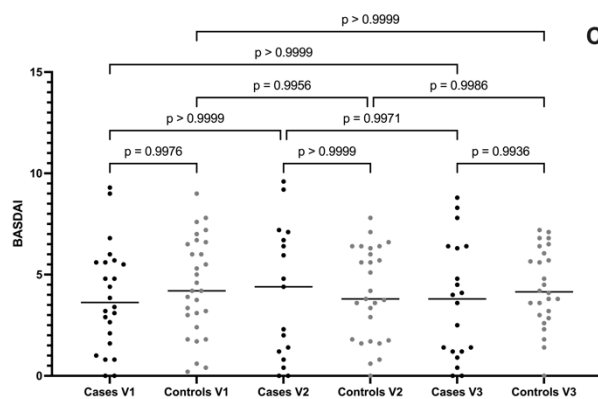
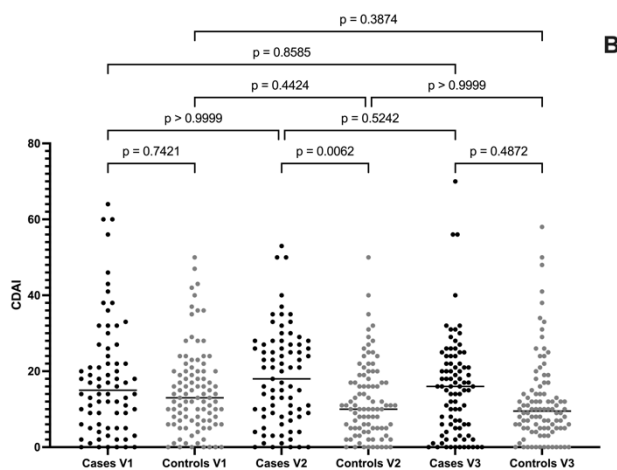
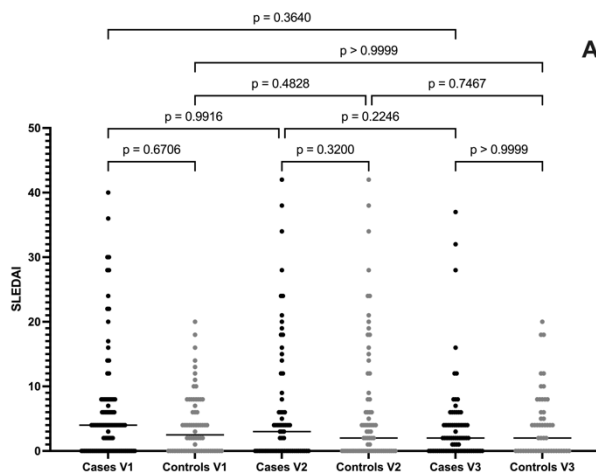
### 211 **Disease activity assessment**

212 There was no significant difference comparing cases and controls in a 6-month  
213 follow-up (V1, V2, and V3), regardless of IMRD (Figure 1).

214

215 Figure 1. Comparison of disease activity scores across the three study visits (v1, V2 e  
216 V3) in patients with systemic lupus erythematosus, measured by SLEDAI (A),  
217 rheumatoid arthritis, measured by CDAI (B) and axial spondylarthritis patients,  
218 measured by BASDAI, comparing cases and controls matched to sex, age and  
219 epidemiological exposition.

220



221 V1: Visit 1 (inclusion); V2: Visit 2; V3: Visit 3

222 CDAI: Clinical Disease Activity Score; SLEDAI: Systemic Lupus Erythematosus Disease Activity Index; BASDAI: Bath

223 Ankylosing Spondylitis Disease Activity Index

224 One-way Anova test (CI 95%), repeated measures, multiple comparison of the mean of each column with the mean

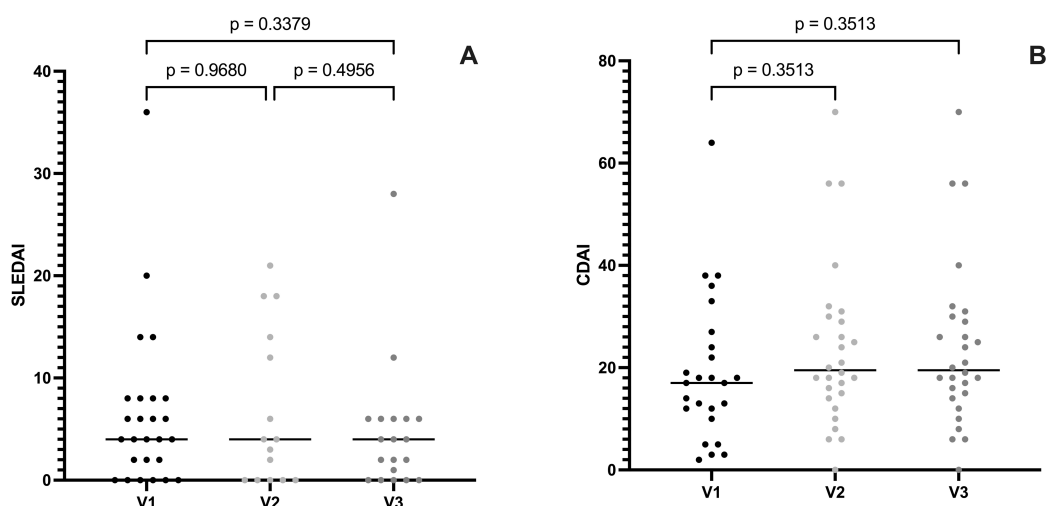
225 of every other column.

226

227

228 Although no difference was demonstrated in the mean activity scores, some  
229 patients self-reported worsening of the disease activity after COVID-19 [30 with RA  
230 (32.2%), 32 with SLE (23.3%) and 2 with SpA (8.6%)]. Exploring these groups further,  
231 we also did not observe any significant difference in the mean activity score in RA and  
232 SLE patients (Figure 2).

233 Figure 2. Comparison of disease activity scores across the three study visits, only in  
234 patients with systemic lupus erythematosus (SLEDAI) (A) and rheumatoid arthritis  
235 (CDAI) (B) who self-reported clinical worsening after COVID-19



236

237 Visit 1 (inclusion); V2: Visit 2; V3: Visit 3.

238 CDAI: Clinical Disease Activity Score; SLEDAI: Systemic Lupus Erythematosus Disease Activity Index.

239 One-way Anova test (CI 95%), repeated measures, multiple comparison of the mean of each column with the  
240 mean of every other column

241

242 In RA patients that self-reported worsening of disease activity after COVID-19,  
243 we applied the flare definition, comparing the CDAI pre-COVID with the CDAI post-  
244 COVID (inclusion), visit 2 and visit 3, in a paired way. At inclusion, 12 patients  
245 (40.0%) had an increased CDAI  $\geq 4.5$  points compared to pre-COVID status, but only  
246 1 required a change in treatment. At visit 2, compared with visit 1, 5 new patients  
247 presented an increased CDAI  $\geq 4.5$  points and 7 patients improved compared to the

248 previous visit. At visit 3, 12 patients presented an increased CDAI, and of these, 8 new  
249 patients, who had not worsened at visit 2, and only one needed change of treatment.

250 Besides, we compared the tender joint count (TJC), swollen joint count (SJC),  
251 patient global assessment (PGA) and medical global assessment (MGA) across the  
252 three visits, no significant difference was observed. Eight patients in this group (26.6%)  
253 self-reported worsening of joint manifestations.

254 Comparing the disease activity in the group of RA patients who self-reported  
255 worsening with those who did not worsen, there was an association with post-COVID  
256 MGA, assessed at baseline (ES= - 0.56; CI95% -1.01 to -0.11, p=0.007) and with CDAI  
257 and all its components at visit 3 (Table 2).

258 Table 2. Comparison between Pre- and Post-COVID mean scores in patients with RA who reported  
259 worsening versus those who did not report it in the visit 3

	Worse in visit 3				p-value	Independent sample effect size (ES)*
	No		Yes			
	Mean	SD	Mean	SD		
CDAI pre-COVID <sup>#</sup>	17.5	16.2	19.2	14.1	0.330	-0.110 (-0.59 to 0.37)
TJC pre-COVID	5.9	6.8	6.4	5.5	0.369	-0.079 (-0.53 to 0.38)
SJC pre-COVID	3.6	6.0	3.3	5.6	0.404	0.057 (-0.40 to 0.51)
PGA pre-COVID	4.8	3.0	8.6	16.4	0.055	-0.385 (-0.85 to 0.087)
MGA pre-COVID	3.2	2.7	3.8	2.6	0.210	-0.196 (-0.66 to 0.27)
CDAI post-COVID <sup>&amp;</sup>	19.0	18.4	26.5	19.3	0.040	-0.397 (-0.83 to 0.04)
TJC post-COVID	6.5	8.4	9.7	8.6	0.044	-0.384 (-0.82 to 0.05)
SJC post-COVID	3.1	4.8	4.8	7.0	0.113	-0.271 (-0.70 to 0.16)
PGA post-COVID	5.5	3.1	6.4	2.9	0.090	-0.304 (-0.74 to 0.140)
MGA post-COVID	3.4	2.9	5.0	2.7	<b>0.007</b>	<b>-0.563 (-1.01 to -0.11)</b>
CDAI V3	11.7	9.6	23.6	15.9	<b>0.001</b>	<b>-0.996 (-1.45 to -0.51)</b>
TJC V3	3.5	3.6	7.5	6.9	<b>&lt;0.001</b>	<b>-0.801 (-1.25 to -0.34)</b>
SJC V3	1.3	2.2	4.7	6.3	<b>0.001</b>	<b>-0.818 (-1.27 to -0.36)</b>
MGA V3	2.7	2.3	5.0	2.2	<b>0.001</b>	<b>-1.003 (-1.46 to -0.53)</b>
PGA V3	4.2	2.7	6.8	2.3	<b>0.001</b>	<b>-1.005 (-1.45 to -0.53)</b>

260 CDAI: clinical disease activity score; TJC: tender joint count; SJC: swollen joint count; PGA: patient global  
261 evaluation; MGA: medical global evaluation. \*Cohen's d test (CI95%): 0.2 to 0.3: Small effect - the difference  
262 between the groups is subtle. About 0.5: Medium effect - moderate difference between the groups. 0.8 or more:  
263 Large effect - substantial difference between the groups.

264

265

266 The size effect for MGA post COVID (V1) mean difference means was  
267 moderate (-0.56; CI95% -1.01 to -0.11) and for CDAI (-0.996; CI95% -1.45 to -0.51),

268 TJC (-0.801; CI 95% -1.25 to -0.34), SJC (-0.818; CI -1.27 to -0.36), MGA (-1.003; CI  
269 -1.46 to -0.53) and PGA at V3 (-1.005; CI -1.45 to -0.53) was a large effect,  
270 demonstrating substantial difference between the groups.

271 Post-COVID worsening in patients with RA was associated with diabetes  
272 mellitus (OR=7.15; CI95% 1.7-29.4, p=0.005) and protectively with current use of TNF  
273 inhibitors before the SARS-CoV-2 infection (OR=0.51; CI95% 0.2-0.9, p=0.026).

274 Among the patients with SLE who self-reported worsening of disease after  
275 COVID-19, 10 of them reported the appearance of new clinical manifestations.  
276 However, no significant differences were observed regarding gender, age,  
277 comorbidities, or concomitant medications. Worsening was only associated with  
278 anosmia, as a symptom of COVID-19 (OR=2.43; CI95% 1.07-5.52, p=0.03). The self-  
279 reported clinical manifestations by SLE patients who were worse after COVID-19  
280 (n=32) at visit 3 were skin rash (5 patients), arthritis (3 patients), proteinuria (2 patients)  
281 and interstitial lung disease (1 patient).

282 Comparing the SLEDAI pre- and post-COVID through the flare definition, we  
283 observed that 6 patients (18.0%) had an increased SLEDAI  $\geq$  4.0 points, but only 2  
284 required a change in treatment. At visit 2, compared with visit 1, most patients showed  
285 SLEDAI improvement and only 3 patients had it increased at visit 3. However, 3 new  
286 patients had an SLEDAI increasing compared with the visit 2.

287 Among SpA patients, only 2 patients self-reported worsening after COVID-19  
288 and one of them had progressive worsening in all three visits, based on the BASDAI.

289 There was no statistically significant association between COVID-19 outcomes  
290 (hospital care, hospitalization, and ICU admission) with post-COVID disease activity  
291 at visit 3.

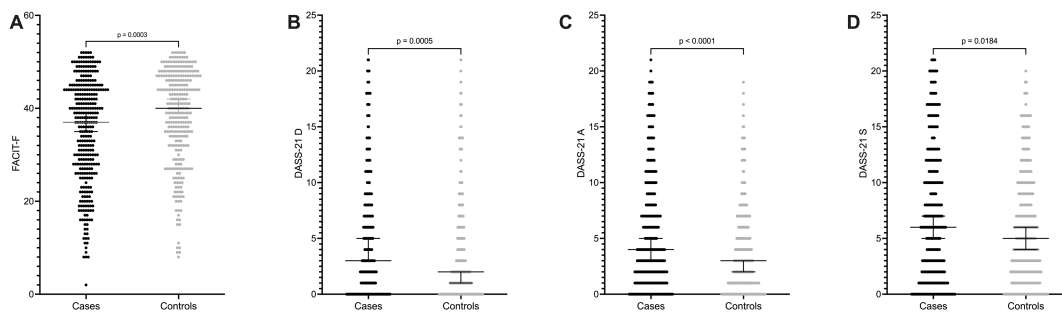
292

### 293 **Fatigue, depression, anxiety, and stress assessment**

294 After a 6-month follow-up, a statistically significant difference was observed  
295 through FACIT and DASS 21 questionnaires in their three domains comparing cases  
296 and controls (Figure 3).

297

298 Figure 3. Comparison among FACIT (A), DASS-21 D (B), DASS-21 A (C) and  
299 DASS-21 S (D) scores median (IQR) in cases and controls at visit 3.



300

301 *IQR: Interquartil range. FACIT-F: Functional Assessment of Chronic Illness Therapy – Fatigue; DASS-21 D: Depression Anxiety and*  
302 *Stress Scale dominium depression; DASS-21 A: Depression Anxiety and Stress Scale dominium anxiety; DASS-21 S: Depression*  
303 *Anxiety and Stress Scale dominium stress.. Mann-Whitney test; CI=95%*

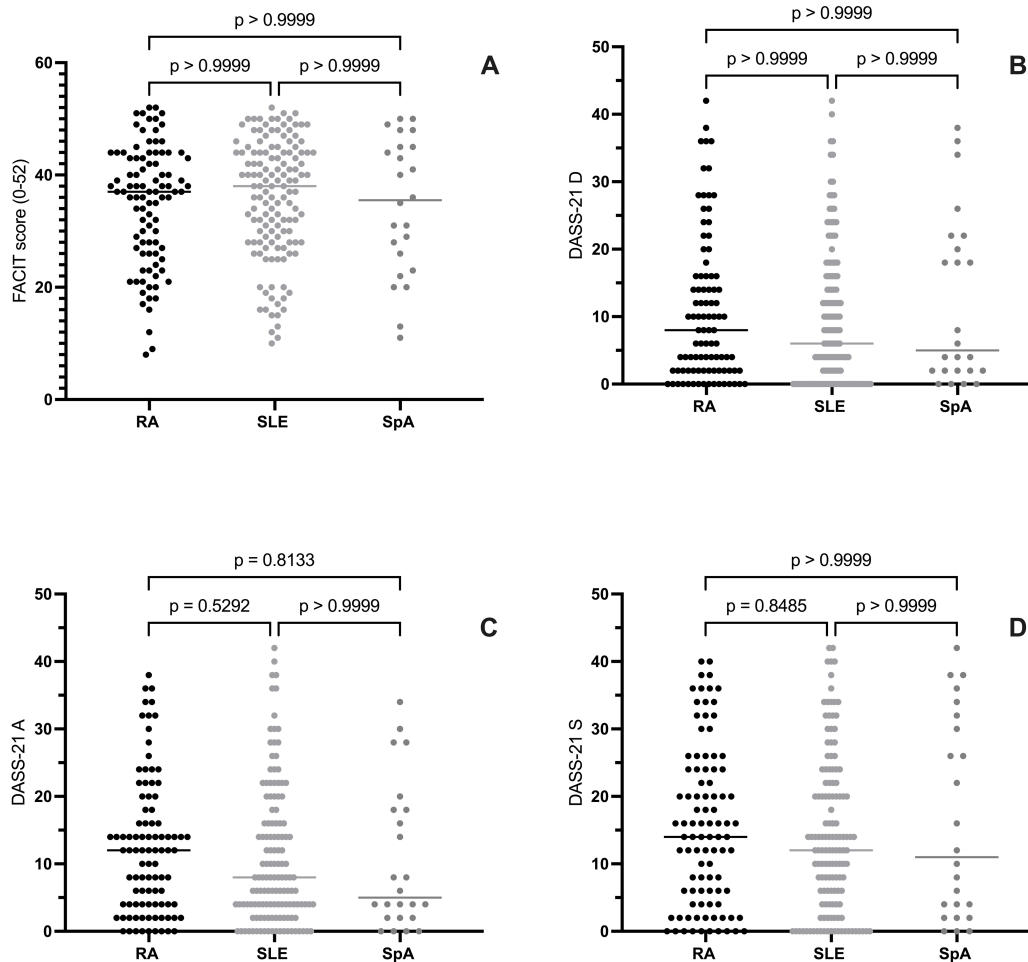
304

305

306 The median FACIT score was 37 (27-44) in cases and 40 (32-47) in controls  
307 (p=0.0003); DASS-21 D median in cases was 3 (0-8) and 2 (0-5) in controls  
308 (p=0.0005); DASS-21 A median in cases was 4 (1-9) and 3 (1-6) in controls (p<0.001)  
309 and DASS-21 S median in cases was 6 (2-12) and 5 (2-9) in controls (p<0.018) No  
310 difference was observed regarding the FACIT-F and the DASS-21 scores when  
311 comparing patients with RA, SLE and SpA in each case group (Figure 4).

312

313 Figure 4. Distribution and comparison among FACIT (A), DASS21 D (B), DASS 21  
314 A (C) and DASS 21 S (D) median scores after a 6-month follow-up in patients with  
315 rheumatoid arthritis (RA), systemic lupus erythematosus (SLE) and axial  
316 spondyloarthritis (axSpA) only in cases group (IMRD COVID-19 +)



317

318 *FACIT-F: Functional Assessment of Chronic Illness Therapy – Fatigue; DASS-21 D: Depression Anxiety and Stress Scale dominium depression;*  
319 *DASS-21 A: Depression Anxiety and Stress Scale dominium anxiety; DASS-21 S: Depression Anxiety and Stress Scale dominium stress; PsoA:*  
320 *psoriatic arthritis; RA: rheumatoid arthritis; axSpA: axial spondyloarthritis; SLE: systemic lupus erythematosus. Independent-Samples Kruskal-*  
321 *Wallis Test, CI 95%.*

322

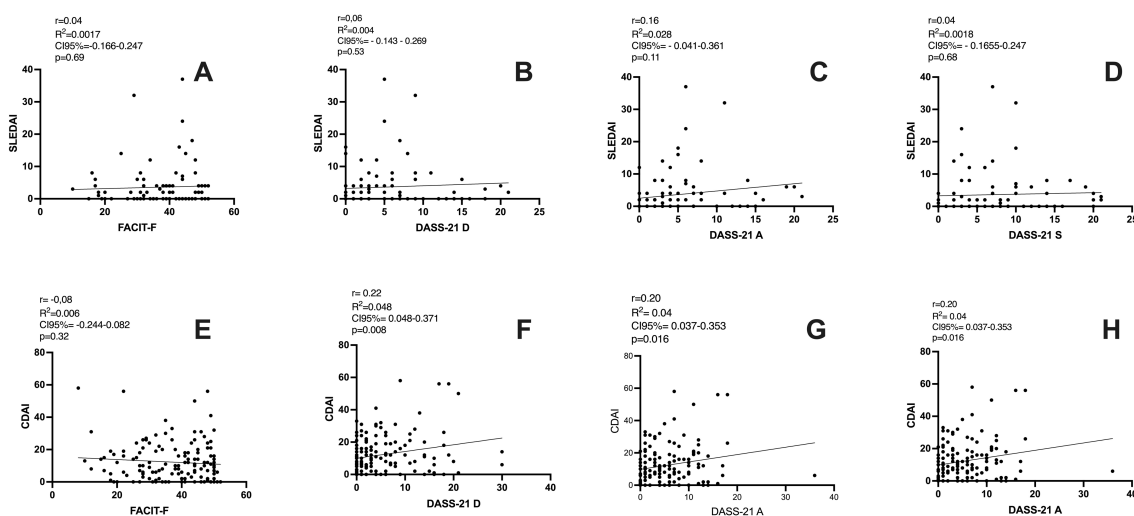
323

324 There was no association of FACIT or DASS-21 with comorbidities, IMRD  
325 endpoints (type and specific therapy), and outcomes related to COVID, such as  
326 symptoms and treatment, in univariate linear models. Considering the FACIT-F and

327 DASS-21 scores, there was not significant correlation between the disease activity in  
328 RA and SLE patients from case group (Figure 5).

329

330 Figure 5. Correlation between disease activity in patients with systemic lupus  
331 erythematosus, measured by SLEDAI, and rheumatoid arthritis, measured by CDAI,  
332 only in case group (IMRD COVID-19 +), with FACIT-F (A and E) and DASS 21-D  
333 (B and F), DASS 21-A (C and G) and DASS 21-S (D and H) scores



334

335

336 Specifically analyzing the group of patients with worsening of disease activity  
337 after COVID-19, we observed that RA patients also had a worsening of FACIT-F (31.5  
338 vs. 36.4;  $p=0.047$ ) and DASS-21-S (19.0 vs. 13.0;  $p=0.031$ ) when compared to those  
339 with no worsening activity. Also, the means was considered as moderate for FACIT-F  
340 (0.47; from 0.03 to 0.91) and DASS 21-S (-0.44; from -0.88 to -0.007) (Table 3). In  
341 SLE patients, no significant difference was observed.

342 Table 3. Comparison among mean scores for FACIT, DASS 21-D, DASS 21-A and DASS-21 S in  
343 patients with RA who reported worsening versus those who did not report it

	Worse at visit 3 (RA patients)				p-value	Independent sample effect size*
	No		Yes			
	Mean	SD	Mean	SD		



FACIT	36.4	9.7	31.5	11.3	<b>0.017</b>	<b>0.47 (0.03 to 0.91)</b>
DASS 21-D	9.5	10.5	12.6	10.9	0.094	-0.29 (-0.73 to 0.144)
DASS 21-A	11.3	10.0	14.4	9.9	0.090	-0.30 (-0.73 to 0.13)
DASS 21-S	13.7	12.4	19.0	9.7	<b>0.023</b>	<b>-0.44 (-0.88 to -0.007)</b>

344 \* Cohen's *d* (CI95%): 0.2 to 0.3: Small effect - the difference between the groups is subtle. About 0.5: Medium effect -  
345 moderate difference between the groups. 0.8 or more: Large effect - substantial difference between the groups.  
346

347 There was no statistically significant association between COVID-19 outcomes  
348 (hospital care, hospitalization, and ICU admission) with FACIT-F and DASS-21 scores  
349 at visit 3.

350

## 351 Discussion

352 Our results demonstrated that the disease activity scores did not differ  
353 significantly in IMRD patients during a 6-month follow-up after COVID-19 in  
354 comparison to those who did not contract the virus. However, the clinical worsening  
355 was related to fatigue, depression, anxiety, and stress.

356 Nowadays, the data regarding the association between SARS-CoV-2 infection  
357 and IMRD flare are controversial, especially because the published studies have  
358 heterogeneous samples and different designs. Consequently, the current uncertainty  
359 revolves around whether the Patient-Reported Outcomes (PROs) are related to IMRD  
360 flare itself after COVID-19 or if it is associated with Long Covid or, alternatively,  
361 represent a reactive post-infectious immunological response working a potential trigger  
362 (1, 12-15).

363 In rheumatic diseases, a flare is defined as any exacerbation of disease activity that, if  
364 persistent, would typically necessitate the initiation or modification of therapy. It signifies a  
365 cluster of symptoms of sufficient duration and intensity to warrant the commencement,  
366 alteration, or escalation of therapeutic measures (16). In our study, although there was no

367 discernible difference in mean activity scores among patients with rheumatoid arthritis  
368 (RA), systemic lupus erythematosus (SLE), and spondyloarthritis (SpA), a subgroup of  
369 patients reported a deterioration in immune-mediated rheumatic disease (IMRD). In  
370 some of these cases, activity scores increased, aligning with the flare definition  
371 employed in this investigation. Given the recognized potential for overestimation of  
372 IMRD activity tools in patients with conditions like fibromyalgia (17) and other chronic  
373 painful disorders, particularly in RA and axial SpA, it becomes imperative to ascertain  
374 the presence of "true" disease activity. This determination holds substantial relevance  
375 in decision-making processes related to treatment adjustments. Nevertheless, we  
376 observed an association between patients' self-reported worsening after 6 months and  
377 the Clinical Disease Activity Index (CDAI) score, along with all its individual  
378 components, including swollen joint count (SJC). This association suggests a plausible  
379 occurrence of flare in this specific subset of patients.

380 **A** cross-sectional study, including 32 patients with RA and SpA, demonstrated  
381 no relevant change regarding disease activity after COVID-19 in those who interrupted  
382 their treatment (1). Data from the COVAD study, a cohort that evaluated 824 patients  
383 with IMRD who had at least one SARS-CoV-2 infection, between March 2021 and  
384 June 18, 2022 (12), showed that 36.9% of patients experienced at least one flare of the  
385 underlying IMRD following COVID-19 infection over a 127 day period (IQR = 62-  
386 308 days) from the date of infection to the date of the survey. Females and patients with  
387 comorbidities had higher odds of flaring of their disease. Patients who reported flares  
388 had worse physical health scores, pain VAS, fatigue VAS, and lower mental health  
389 scores compared to those who did not report flares. However, as stated by the authors,  
390 "this was a self-reported disease flares without verification by a physician which could

391 be impacted by patients' perceptions of flares and their inability to distinguish from  
392 ongoing symptoms of long-COVID syndrome or secondary fibromyalgia".

393 In a study conducted on 92 children with IMRD who have had COVID-19  
394 (13), 10% had a relapse of IMRD after infection. The relapse was mild in four and  
395 moderate in five cases. One patient had a severe relapse of ARD and required  
396 hospitalization, without association with COVID-19 clinical presentation.

397 Similar to other several viral infections, SARS-CoV-2 infection could be  
398 potential trigger of reactive and autoimmune diseases by inducing type II and type IV  
399 hypersensitivity reactions, leading to autoantibodies production and autoimmune  
400 diseases development as long-term complications (18), and in patients with pre-existing  
401 IMRD, it may be difficult to identify whether it is a flare of the disease or a post-  
402 infection manifestation. A recent study evaluated the effects of COVID-19 on the  
403 development and progression of RA using a collagen-induced arthritis (CIA) animal  
404 model. The incidence and severity of RA in CIA mice were slightly increased by  
405 SARS-CoV-2 spike protein in vivo. In addition, the levels of autoantibodies and  
406 thrombotic factors, such as anti-CXC chemokine ligand 4 (CXCL4, also called PF4)  
407 antibodies and anti-phospholipid antibodies were significantly increased by SARS-  
408 CoV-2 spike protein. Furthermore, tissue destruction and inflammatory cytokine level  
409 in joint tissue were markedly increased in CIA mice by SARS-CoV-2 spike protein,  
410 suggesting that COVID-19 accelerates the development and progression of RA by  
411 increasing inflammation, autoantibody production, and thrombosis(19).

412 In an Italian study, 122 consecutive post-COVID-19 cases were evaluated, with  
413 the onset of the rheumatic manifestations within 4 weeks from SARS-CoV-2 infection  
414 as an inclusion criterion. In this group, it was identified that most patients had  
415 inflammatory joint disease (52.5%); 19.7% of cases were diagnosed with connective

416 tissue diseases and 6.6% of cases with vasculitis. It is interesting to note that in this  
417 same cohort, patients with inflammatory manifestations post-COVID-19 vaccine were  
418 evaluated, and this group had a higher prevalence of patients classified as polymyalgia  
419 rheumatica (PMR, 33.1% vs. 21.3%,  $p=0.032$ ) (14). Another study evaluated the  
420 presence of arthritis associated with COVID-19 by ultrasound in 10 patients with ( $n=4$ )  
421 and without previous rheumatic disease ( $n=6$ ). In the group without previous disease,  
422 4 of the 6 patients presented arthritis for 4 to 16 weeks after infection, comparable to  
423 reactive arthritis. One of them developed late-onset rheumatoid arthritis. In the group  
424 with previous disease, synovitis and tenosynovitis with positive power Doppler were  
425 observed, suggesting a possible flare of the disease after COVID-19 (20).

426 A major concern when interpreting the musculoskeletal symptoms in these  
427 patients is the possibility of developing post-Covid syndrome, also known as long  
428 Covid. More than 20% of subjects surviving acute COVID-19 may suffer from  
429 persisting symptoms and develop new ones after one month and about 5% of all  
430 infected individuals develop long-term complications after 6 months, possible due to  
431 tissue damage, viral reservoirs, autoimmunity, and persistent inflammation (21, 22).  
432 The clinical presentation in these cases, such as fatigue and joint pain, may mimic a  
433 disease flare, thereby complicating the decision-making regarding treatment's change.

434 Recent systematic review showed that the prevalence of arthralgia ranges from  
435 2% to 65% within a time frame varying from 4 weeks to 12 months after COVID-19.  
436 Inflammatory arthritis has been reported with various clinical phenotypes, including  
437 RA-like pattern as other prototypical viral arthritis, as well as polymyalgia-like, or  
438 acute monoarthritis and oligoarthritis of large joints resembling reactive arthritis or SpA  
439 style (23).

440 An Iranian study evaluated the prevalence of musculoskeletal symptoms in 239  
441 patients after the acute phase of COVID-19 and its associated factors, using an online  
442 questionnaire. Almost all of them (98.74%) had experienced at least one  
443 musculoskeletal symptom after recovering from COVID-19, and the most common  
444 symptom was fatigue (91.2%), followed by myalgia, headache, and low back pain.  
445 High BMI, hospitalization, and ICU admission were associated with a higher risk of  
446 musculoskeletal symptoms (24).

447 Besides musculoskeletal symptoms, patients could develop psychological  
448 distress after COVID-19, such as depression, anxiety, and stress, symptoms that could  
449 also be present in IMRD. In our patients, the frequency of these symptoms in IMRD  
450 post COVID-19 was significantly higher than in patients who did not have the infection.  
451 Some authors suggested that the term of long COVID is unappropriated and should be  
452 replaced by fibromyalgia-like post-COVID syndrome (2).

453 We acknowledge the limitations of our study, such as the fact we have the  
454 FACIT and DASS 21 scores only at the last visit and no possibility of comparison with  
455 the pre-COVID status. Since the study began in the first months of the pandemic, we  
456 did not know yet that these outcomes were important. We decided to include it after the  
457 first studies were published demonstrating the association of these symptoms with  
458 SARS-CoV-2 infection. However, we know that fatigue, depression, anxiety, and stress  
459 are frequent symptoms in patients with IMRD and we have a group that did not have  
460 COVID-19 as a comparator, and in the group with COVID-19 these scores were  
461 significantly worse. In addition, the greater political and economic instability  
462 experienced in our country may have had a direct impact on psychological distress as  
463 a bias. On the other hand, we have a representative sample, from various regions of  
464 Brazil, with a follow-up period of 6 months, compared with a group of patients with

465 IMRD matched by sex and age, for the same epidemiological period, one of the main  
466 strengths of our study.

467

## 468 **Conclusions**

469 Our observational data underscore the complex interplay between COVID-19  
470 and immune-mediated rheumatic diseases (IMRD). While disease activity scores may  
471 not exhibit significant differences, individuals with post-COVID-19 IMRD may  
472 undergo noteworthy deterioration in psychological well-being. The variations in reports  
473 regarding IMRD flares and the potential triggering role of SARS-CoV-2 in  
474 autoimmune manifestations underscore the need for thorough clinical assessment and  
475 a comprehensive approach to their management.

476

## 477 **Acknowledgements**

478 All ReumaCoV Brazil researchers

479

480

## 481 **References**

482

483 1. Miledi S, Bouzid S, Fazaa A, Sallemi M, Bousaa H, Ben Abdelghani K, Laatar A.  
484 COVID-19 in Patients with Systemic Inflammatory Diseases: Impact on Disease Activity.  
485 *Curr Rheumatol Rev.* 2023;19(3):330-5.

486 2. Mariette X. Long COVID: a new word for naming fibromyalgia? *Ann Rheum Dis.*  
487 2024;83(1):12-4.

- 488 3. Marques C, Kakehasi AM, Gomides APM, Paiva EDS, Dos Reis Neto ET, Pileggi  
489 GCS, et al. A Brazilian Cohort of Patients With Immuno-Mediated Chronic Inflammatory  
490 Diseases Infected by SARS-CoV-2 (ReumaCoV-Brasil Registry): Protocol for a Prospective,  
491 Observational Study. *JMIR Res Protoc.* 2020;9(12):e24357.
- 492 4. Aletaha D, Nell VP, Stamm T, Uffmann M, Pflugbeil S, Machold K, Smolen JS.  
493 Acute phase reactants add little to composite disease activity indices for rheumatoid arthritis:  
494 validation of a clinical activity score. *Arthritis Res Ther.* 2005;7(4):R796-806.
- 495 5. Gladman DD, Ibanez D, Urowitz MB. Systemic lupus erythematosus disease activity  
496 index 2000. *J Rheumatol.* 2002;29(2):288-91.
- 497 6. Garrett S, Jenkinson T, Kennedy LG, Whitelock H, Gaisford P, Calin A. A new  
498 approach to defining disease status in ankylosing spondylitis: the Bath Ankylosing  
499 Spondylitis Disease Activity Index. *J Rheumatol.* 1994;21(12):2286-91.
- 500 7. Konzett V, Kerschbaumer A, Smolen JS, Kristianslund EK, Provan SA, Kvien TK,  
501 Aletaha D. Definition of rheumatoid arthritis flare based on SDAI and CDAI. *Ann Rheum*  
502 *Dis.* 2024;83(2):169-76.
- 503 8. Yee CS, Farewell VT, Isenberg DA, Griffiths B, Teh LS, Bruce IN, et al. The use of  
504 Systemic Lupus Erythematosus Disease Activity Index-2000 to define active disease and  
505 minimal clinically meaningful change based on data from a large cohort of systemic lupus  
506 erythematosus patients. *Rheumatology (Oxford).* 2011;50(5):982-8.
- 507 9. Gossec L, Portier A, Landewe R, Etcheto A, Navarro-Compan V, Kroon F, et al.  
508 Preliminary definitions of 'flare' in axial spondyloarthritis, based on pain, BASDAI and  
509 ASDAS-CRP: an ASAS initiative. *Ann Rheum Dis.* 2016;75(6):991-6.

- 510 10. Cella D. The Functional Assessment of Cancer Therapy-Anemia (FACT-An) Scale: a  
511 new tool for the assessment of outcomes in cancer anemia and fatigue. *Semin Hematol.*  
512 1997;34(3 Suppl 2):13-9.
- 513 11. Henry JD, Crawford JR. The short-form version of the Depression Anxiety Stress  
514 Scales (DASS-21): construct validity and normative data in a large non-clinical sample. *Br J*  
515 *Clin Psychol.* 2005;44(Pt 2):227-39.
- 516 12. Sandhu NK, Ravichandraan N, Nune A, Day J, Sen P, Nikiphorou E, et al. Flares of  
517 autoimmune rheumatic disease following COVID-19 infection: Observations from the  
518 COVAD study. *Int J Rheum Dis.* 2024;27(1):e14961.
- 519 13. Sinkovec Savsek T, Zajc Avramovic M, Avcin T, Korva M, Avsic Zupanc T, Toplak  
520 N. Disease relapse rate in children with autoimmune rheumatic diseases after COVID-19  
521 infection and vaccination. *Pediatr Rheumatol Online J.* 2023;21(1):46.
- 522 14. Ursini F, Ruscitti P, Addimanda O, Foti R, Raimondo V, Murdaca G, et al.  
523 Inflammatory rheumatic diseases with onset after SARS-CoV-2 infection or COVID-19  
524 vaccination: a report of 267 cases from the COVID-19 and ASD group. *RMD Open.*  
525 2023;9(2).
- 526 15. van Kessel SAM, Olde Hartman TC, Lucassen P, van Jaarsveld CHM. Post-acute and  
527 long-COVID-19 symptoms in patients with mild diseases: a systematic review. *Fam Pract.*  
528 2022;39(1):159-67.
- 529 16. Bingham CO, 3rd, Pohl C, Woodworth TG, Hewlett SE, May JE, Rahman MU, et al.  
530 Developing a standardized definition for disease "flare" in rheumatoid arthritis (OMERACT 9  
531 Special Interest Group). *J Rheumatol.* 2009;36(10):2335-41.



- 532 17. Coskun Benlidayi I. Fibromyalgia interferes with disease activity and biological  
533 therapy response in inflammatory rheumatic diseases. *Rheumatol Int.* 2020;40(6):849-58.
- 534 18. Votto M, Castagnoli R, Marseglia GL, Licari A, Brambilla I. COVID-19 and  
535 autoimmune diseases: is there a connection? *Curr Opin Allergy Clin Immunol.*  
536 2023;23(2):185-92.
- 537 19. Lee AR, Woo JS, Lee SY, Lee YS, Jung J, Lee CR, et al. SARS-CoV-2 spike protein  
538 promotes inflammatory cytokine activation and aggravates rheumatoid arthritis. *Cell*  
539 *Commun Signal.* 2023;21(1):44.
- 540 20. Vogler D, Ruscitti P, Navarini L, Giacomelli R, Iagnocco A, Hoff P, et al. Diagnosis  
541 of COVID-19 associated arthritis in patients with or without underlying rheumatic and  
542 musculoskeletal disease supported by musculoskeletal ultrasound: a case series from three  
543 European centres. *Clin Exp Rheumatol.* 2023;41(3):656-66.
- 544 21. Global Burden of Disease Long CC, Wulf Hanson S, Abbafati C, Aerts JG, Al-Aly Z,  
545 Ashbaugh C, et al. Estimated Global Proportions of Individuals With Persistent Fatigue,  
546 Cognitive, and Respiratory Symptom Clusters Following Symptomatic COVID-19 in 2020  
547 and 2021. *JAMA.* 2022;328(16):1604-15.
- 548 22. Cervia-Hasler C, Bruning SC, Hoch T, Fan B, Muzio G, Thompson RC, et al.  
549 Persistent complement dysregulation with signs of thromboinflammation in active Long  
550 Covid. *Science.* 2024;383(6680):eadg7942.
- 551 23. Ciaffi J, Vanni E, Mancarella L, Brusi V, Lisi L, Pignatti F, et al. Post-Acute  
552 COVID-19 Joint Pain and New Onset of Rheumatic Musculoskeletal Diseases: A Systematic  
553 Review. *Diagnostics (Basel).* 2023;13(11).

- 554 24. Azadvari M, Haghparast A, Nakhostin-Ansari A, Emami Razavi SZ, Hosseini M.  
555 Musculoskeletal symptoms in patients with long COVID: A cross-sectional study on Iranian  
556 patients. *Heliyon*. 2022;8(8):e10148.

557

558