

Supplementary Materials of Dietary and Lifestyle Factors of Brain Iron Accumulation and Parkinson's Disease Risk

Authors:

Jonathan Ahern^{1,2}, Mary ET Boyle¹, Wesley K. Thompson³, Chun Chieh Fan^{3,4}, Robert Loughnan^{1,2,3,5}

1. Department of Cognitive Science, University of California, San Diego, 9500 Gilman Drive, La Jolla, CA 92093, USA
2. Center for Human Development, University of California, San Diego, 9500 Gilman Drive, La Jolla, CA 92161, USA
3. Center for Population Neuroscience and Genetics, Laureate Institute for Brain Research, Tulsa, OK 74103, USA
4. Department of Radiology, University of California, San Diego School of Medicine, 9500 Gilman Drive, La Jolla, CA 92037, USA
5. Center for Multimodal Imaging and Genetics, University of California, San Diego School of Medicine, 9444 Medical Center Dr, La Jolla, CA 92037, USA

Supplementary Note

Dietary/Lifestyle Preferences and Brain Iron

To understand how food and lifestyle preferences may be related to brain iron accumulation we performed a fit of a series of linear regression models associating each diet/lifestyle preference with the hemochromatosis brain PVS. The strongest positive associations were between wine and the hemochromatosis brain PVS (red wine: $t=6.72$, $p_{FDR}<1e-8$; white wine: $t=5.48$, $p_{FDR}<1e-5$). There were additional FDR significant positive associations between the hemochromatosis brain PVS and other alcoholic beverages including spirits ($t=3.56$, $p_{FDR}=0.004$) and whiskey ($t=2.83$, $p_{FDR}=0.022$). Each of these indicates that a greater preference for alcohol is related to greater iron accumulation in motor regions captured by the PVS.

There were also Bonferroni significant positive associations between the hemochromatosis brain PVS and preferences for red meats as a collective category ($t=4.46$, $p_{FDR}<0.001$) and individual red meats like lamb ($t=4.30$, $p_{FDR}<0.001$) and beef steak ($t=4.17$, $p_{FDR}<0.001$) among others. Additional positive associations between meats and the hemochromatosis brain PVS were (in order of descending significance) grilled meat, sausage meat, pork chop, bacon, roast chicken, ham, non-prawn shellfish, prawns, burger meat, salami, and chicken (Supplementary Figure 2 and Supplementary Table 3). Once again preferences for these foods indicate greater brain iron accumulation.

There were significant negative associations between the hemochromatosis brain PVS and food made from cereal grains like corn flakes ($t=-4.61$, $p_{FDR}<0.001$), porridge ($t=-3.74$, $p_{FDR}=0.004$), and cereal granola bars ($t=-3.36$, $p_{FDR}=0.007$). There were also significant negative associations between the hemochromatosis brain and sweets including biscuits ($t=-3.64$, $p_{FDR}=0.004$), cake ($t=-3.56$, $p_{FDR}=0.004$), milk chocolate ($t=-3.36$, $p_{FDR}=0.007$), sweet coffee house drinks ($t=-3.08$, $p_{FDR}=0.014$), and cake icing ($t=-2.64$, $p_{FDR}=0.031$).

There is also an FDR negative association between the hemochromatosis brain PVS and preferences for forms of exercise including bicycling ($t=-3.19$, $p_{FDR}=0.010$), exercising alone ($t=-3.03$, $p_{FDR}=0.015$), working up a sweat ($t=-2.78$, $p_{FDR}=0.024$), and taking the stairs ($t=-2.57$, $p_{FDR}=0.035$). These results indicate that a preference for certain breakfast cereals, high-sugar foods/drinks, and physical exercise are associated with lower levels of iron in motor circuits of the brain.

A graphical representation of these results can be found in Supplementary Figure 2 and a full numeric summary of all the relationships between preferences and the hemochromatosis brain PVS can be found in Supplementary Table 3.

Dietary/Lifestyle Preferences and Parkinson's Disease Risk

We fit a series of linear regression models to understand how preferences might be associated with PD risk. Four main categories of preferences were associated with PD risk: exercise, fruits/vegetables, alcoholic beverages, and sweets.

We found that increased PD risk was associated with a preference for less exercise including taking the stairs ($t=-10.87$, $p_{FDR}<1e-24$), working up a sweat ($t=-7.67$, $p_{FDR}<1e-12$), and

exercising alone ($t=-7.21$, $p_{\text{FDR}}<1e-10$). We suspect that as movement deficits are a core feature of the disorder these results may be an example of reverse causation where those living with PD develop a preference for not exercising leading to the significant results we observe.

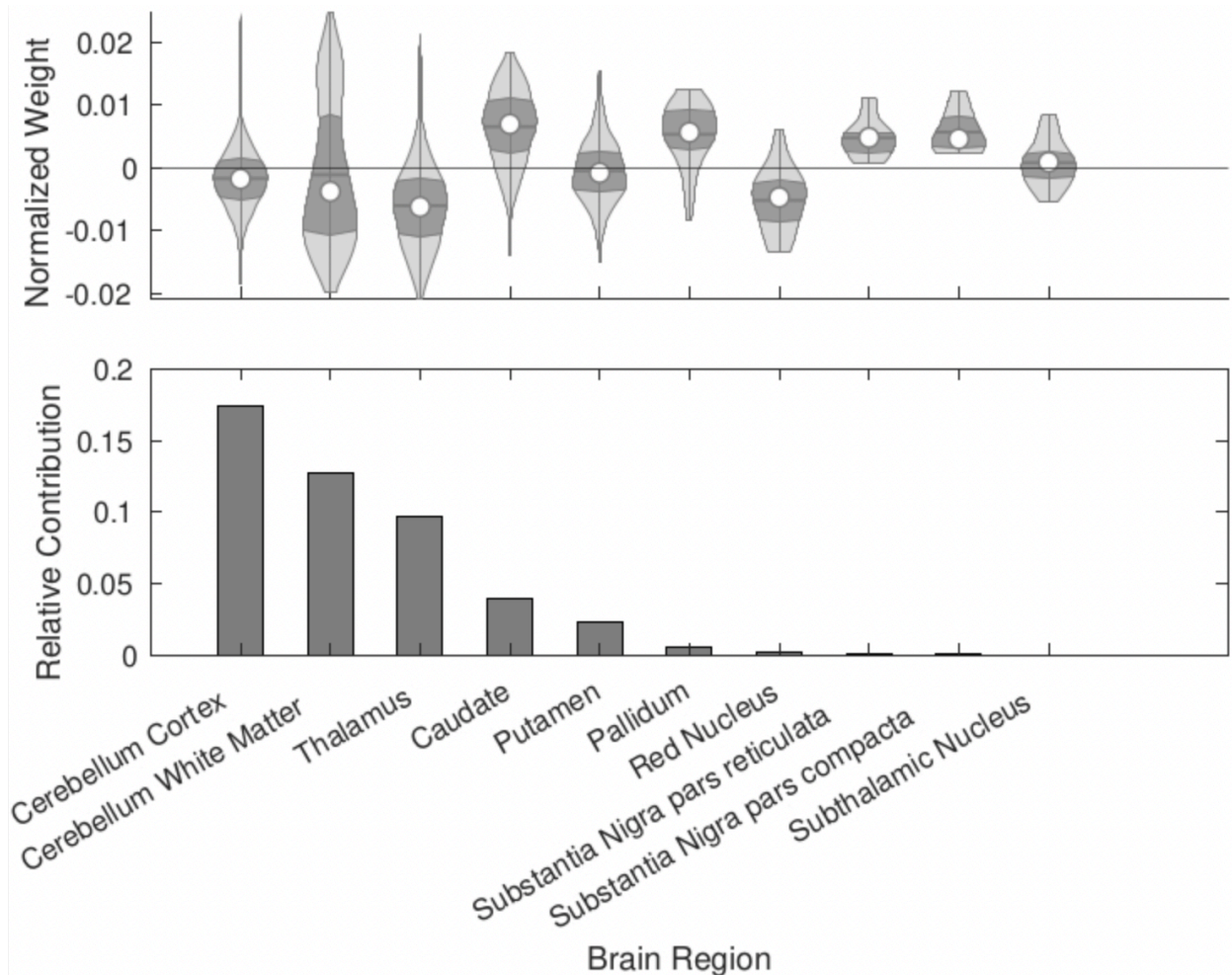
We also identified that lower PD risk was associated with a preference for produce including a collective preference for vegetables ($t=-6.24$, $p_{\text{FDR}}<1e-7$) and several individual vegetables including salad leaves ($t=-8.27$, $p_{\text{FDR}}<1e-13$), onions ($t=-5.65$, $p_{\text{FDR}}<1e-6$), lentil beans ($t=-5.58$, $p_{\text{FDR}}<1e-5$), as well as (in descending order of significance) cucumber, cabbage, cauliflower, white turnip, spinach, broccoli, broad beans, fresh tomatoes, pears, asparagus, beetroot, avocados, plums, grapefruit, and garlic (Supplementary Figure 3 and Supplementary Table 4).

We identified a lower PD risk was associated with a preference for alcohol including spirits ($t=-6.15$, $p_{\text{FDR}}<10e-7$), red wine ($t=-5.80$, $p_{\text{FDR}}<10e-6$), whiskey ($t=-3.50$, $p_{\text{FDR}}=0.002$), bitter ale ($t=-3.33$, $p_{\text{FDR}}=0.004$), going to the pub ($t=-2.94$, $p_{\text{FDR}}=0.012$), and white wine ($t=-2.66$, $p_{\text{FDR}}=0.024$).

We identified higher PD risk was associated with a preference for sweet foods as a category ($t=4.52$, $p_{\text{FDR}}<1e-4$) and individual sweet foods including sweet coffee house drinks ($t=5.15$, $p_{\text{FDR}}<1e-5$), cake icing ($t=4.90$, $p_{\text{FDR}}<1e-4$), cheesecake ($t=4.81$, $p_{\text{FDR}}<1e-4$), as well as (in order of descending significance) biscuits, regular non-diet fizzy drinks, ice cream, milk chocolate, cake, marzipan, jam, and apple juice (Supplementary Figure 3, Supplementary Table 4).

A graphical representation of these results can be found in Supplementary Figure 3. A full numeric summary of all the relationships between preferences and the hemochromatosis brain PVS can be found in Supplementary Table 4.

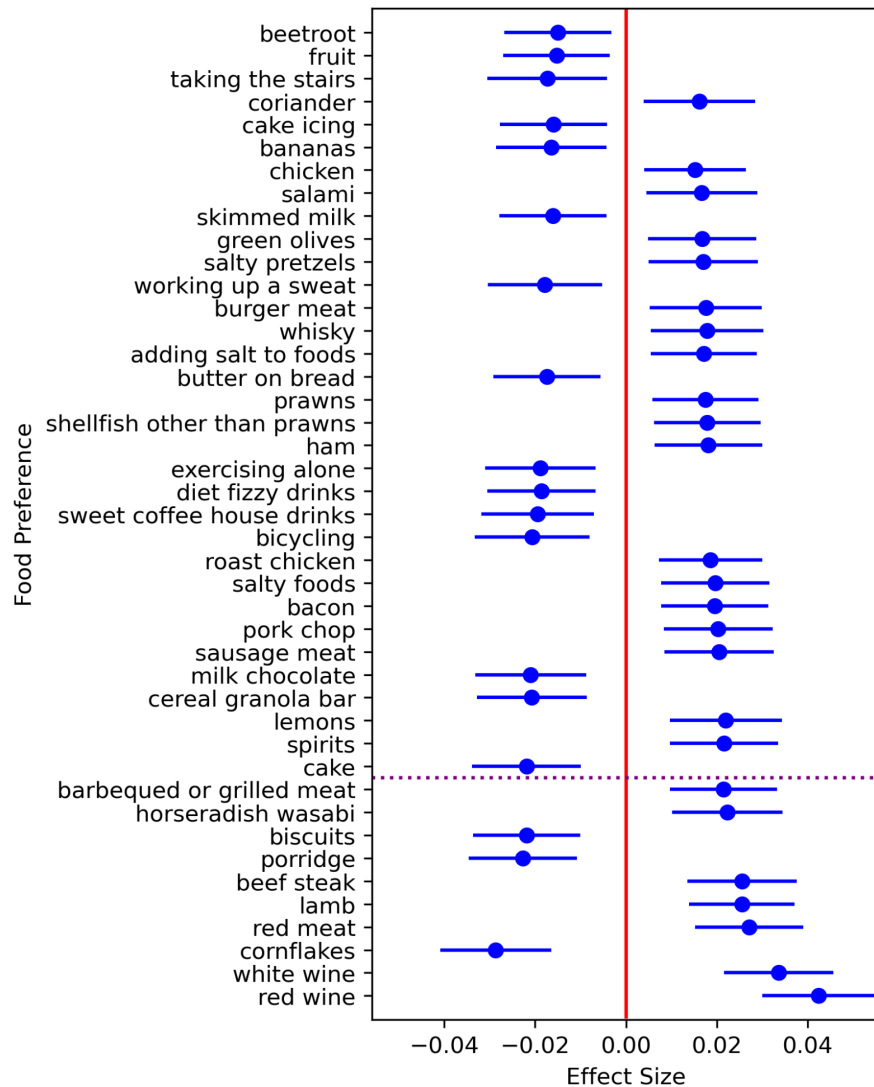
Supplementary Figure 1: PolyVoxel Score Region Weighting



Supplementary Table 1: PolyVoxel Score (PVS) weight breakdown by each region of interest (ROI). The top plot represents the posterior weights by brain region. Weights are normalized to be of unit length. The bottom plot shows the relative contribution of each region to the PVS as the sum of squares within each brain region for posterior weights. This plot is adapted from the work done by Loughnan et. al. 2022¹.

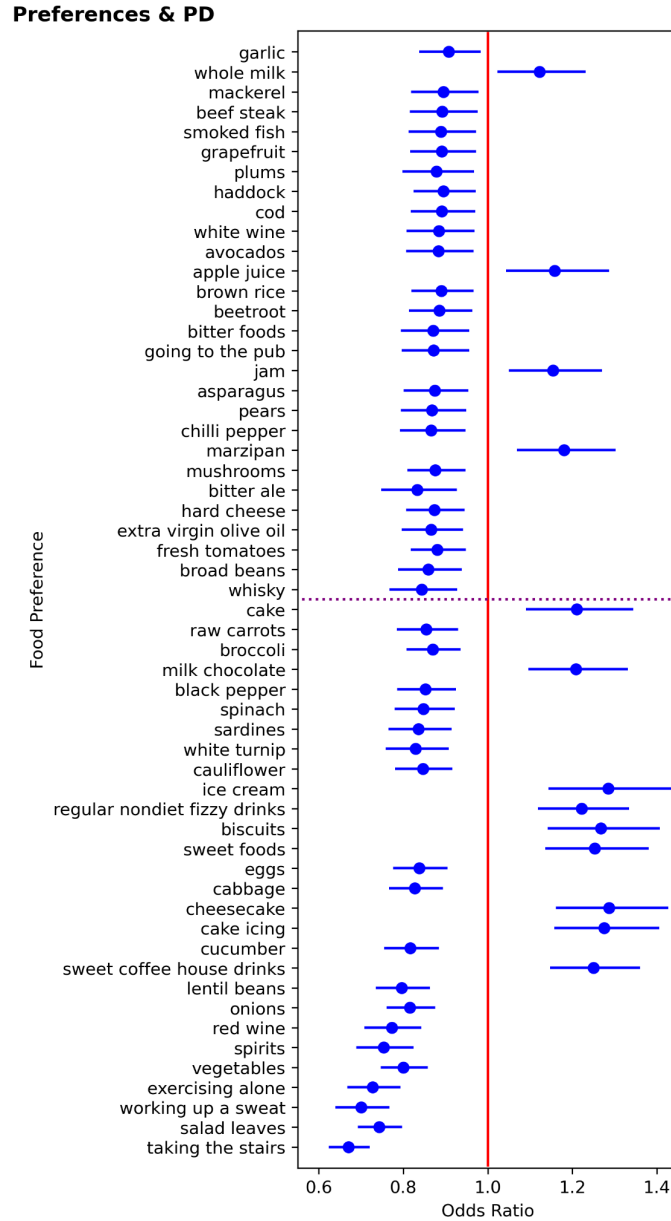
Supplementary Figure 2: Associations Between Food Preferences and Hemochromatosis Brain PVS

Preferences & PVS



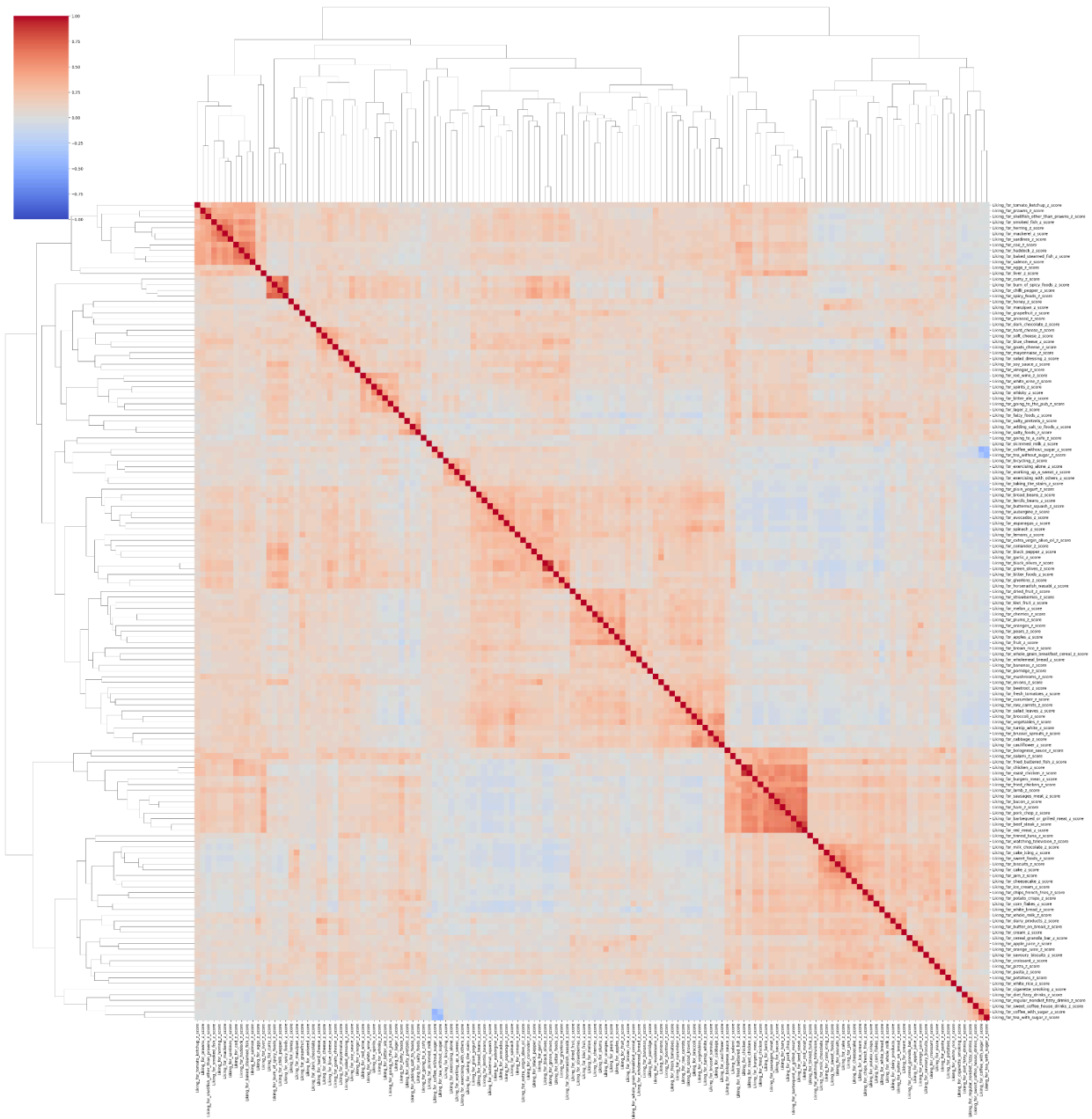
Supplementary Table 2: Forrest plot showing the effect size and 95% confidence intervals of FDR significant preferences and the iron-sensitive measure, the hemochromatosis brain PVS. Results below the purple line are additionally Bonferonni Significant. These results are also shown in tandem with their associations with PD risk in Figure 2A. A full numeric summary of all the relationships between preferences and the hemochromatosis brain PVS can be found in Supplementary Table 3

Supplementary Figure 3: Associations Between Food Preferences and PD Risk



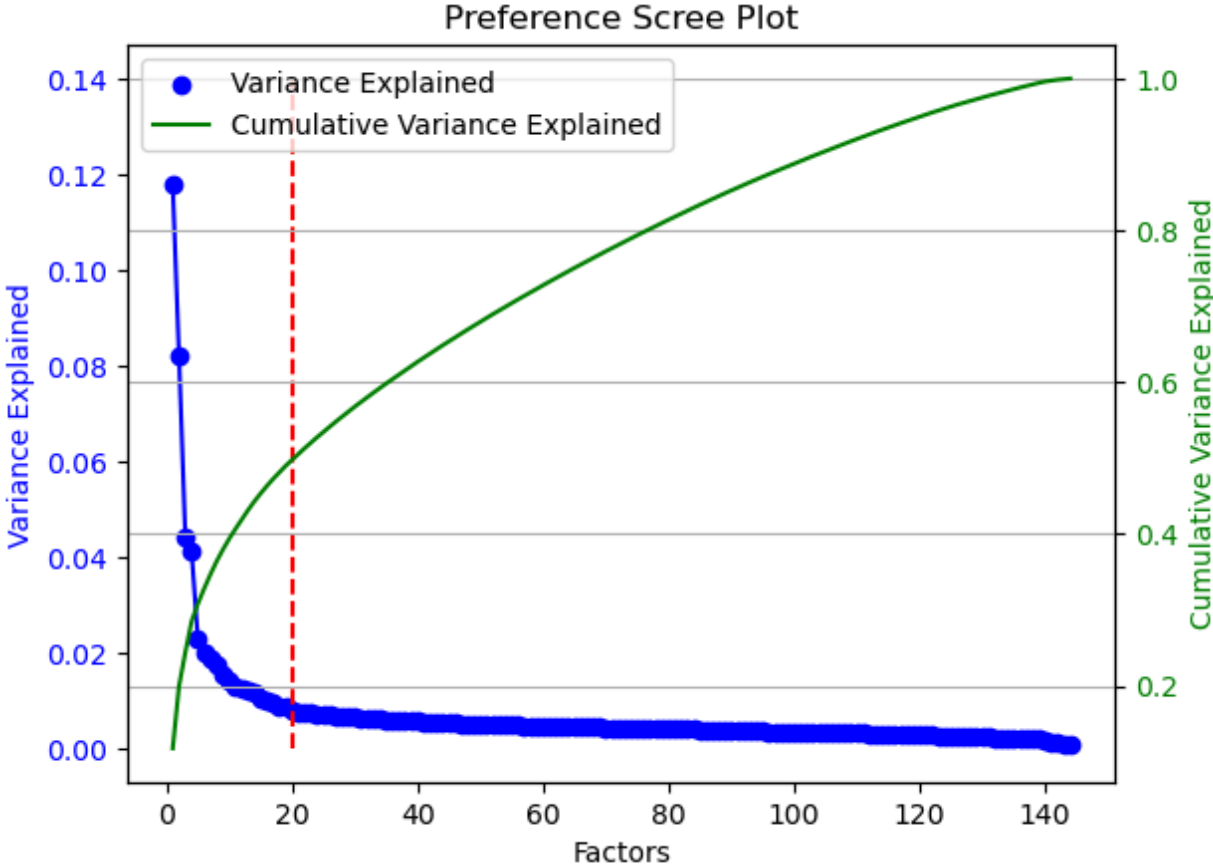
Supplementary Figure 3: Forrest plot showing the effect size and 95% confidence intervals of FDR significant preferences and odds ratio of PD. Results below the purple line are additionally Bonferonni Significant. These results are also shown in tandem with their associations with the hemochromatosis brain PVS in Figure 2A. A full numeric summary of all the relationships between preferences and the hemochromatosis brain PVS can be found in Supplementary Table 4.

Supplementary Figure 4: Dendrogram of Preferences



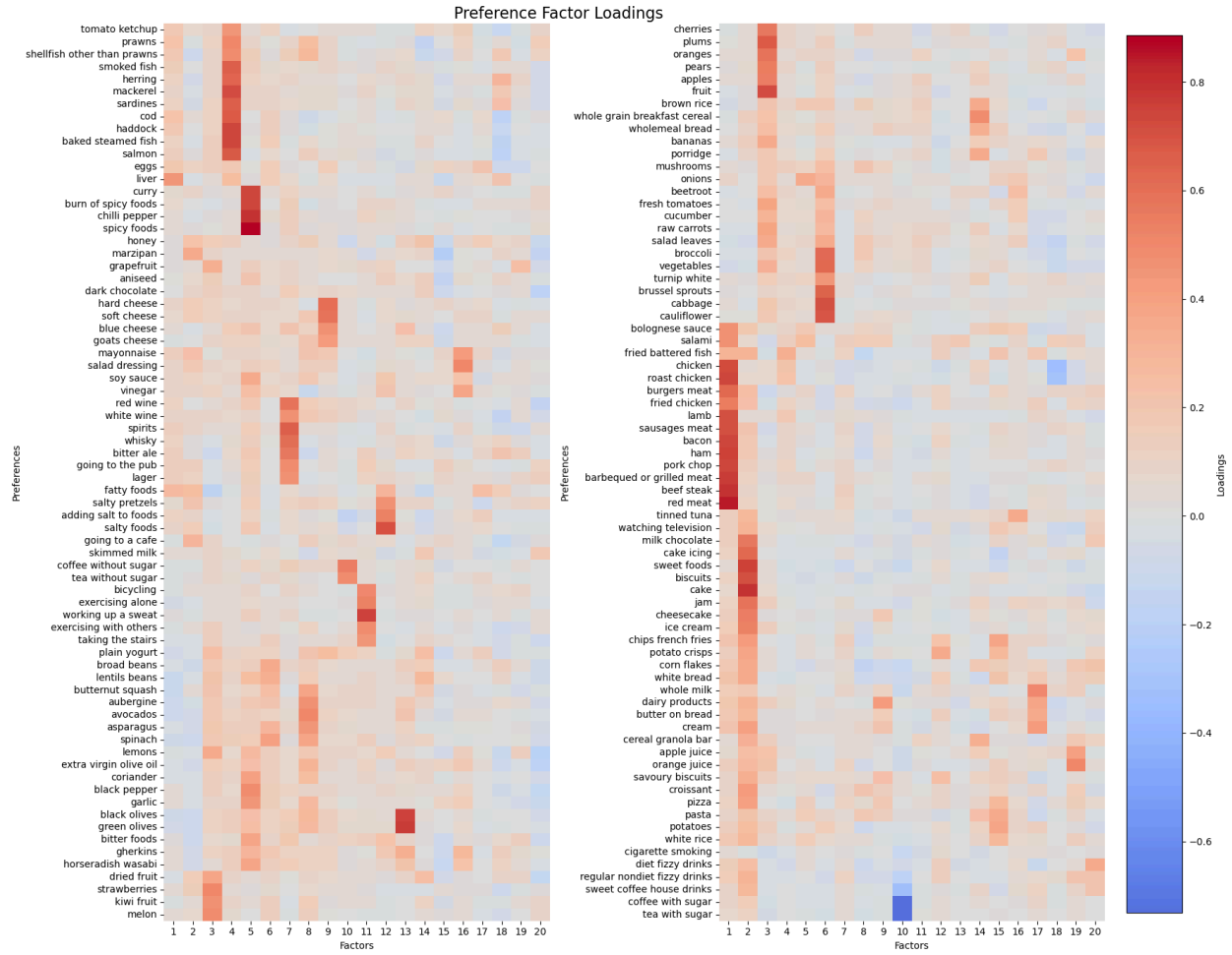
Supplementary Figure 4: This is a dendrogram showing a hierarchical clustering of the preferences based on how similar they are. The color gradients represent the correlation.

Supplementary Figure 5: Scree Plot for the Factor Analysis of Preference Data



Supplementary Figure 5: Scree plot showing the variance explained by factor and the cumulative variance explained. The red, dotted line indicates the chosen number of factors for our analysis.

Supplementary Figure 6: Heatmap of Preference Factor Loadings



Supplementary Figure 6: Heatmap indicating the positive and negative factor loadings associated with each factor.

Supplementary Citations

1. Loughnan, R. *et al.* Polygenic architecture of a novel MRI endophenotype: the “hemochromatosis brain”. 2022.10.22.22281386 Preprint at <https://doi.org/10.1101/2022.10.22.22281386> (2022).