

1 **Detection and quantification of human immunodeficiency virus-1 (HIV-1) total nucleic**
2 **acids in wastewater settled solids from two California communities**

3
4 Marlene K. Wolfe^{*1}, Bridgette Shelden², Dorothea Duong², Meri R.J. Varkila³, Bradley J. White²,
5 Julie Parsonnet^{3,4}, Alexandria B. Boehm⁵

6
7 1. Gangarosa Department of Environmental Health, Rollins School of Public Health, Emory
8 University, 1518 Clifton Rd, Atlanta, GA, USA, 30322

9 2. Verily Life Sciences LLC, South San Francisco, CA, USA

10 3. Division of Infectious Diseases and Geographic Medicine, Department of Medicine, Stanford
11 University, 300 Pasteur Drive, Stanford, California, 94305

12 4. Department of Epidemiology and Population Health, Stanford University, 300 Pasteur Drive,
13 Stanford, California, 94305

14 5. Department of Civil and Environmental Engineering, Stanford University, 473 Via Ortega,
15 Stanford, California, 94305

16

17 * Author to whom correspondence should be addresses: marlene.wolfe@emory.edu

18

19 **Abstract**

20 Wastewater surveillance for infectious agents has proved useful in identifying circulation of
21 viruses within populations. We investigated the presence and concentration of human
22 immunodeficiency virus (HIV)-1 total nucleic acids (including both viral RNA and proviral DNA)
23 in wastewater solids. We retrospectively measured HIV-1 nucleic-acids in two samples per
24 week for 26 months at two wastewater treatment plants serving populations with different
25 prevalences of HIV infections in San Francisco and Santa Clara County, California, USA. We
26 detected HIV nucleic-acids in a majority of samples with concentrations ranging from non-detect
27 to 3.9×10^5 cp/g (N=459 samples total). Concentrations of HIV-1 were significantly higher in
28 samples from the wastewater treatment plant serving a population with a higher prevalence of
29 people living with HIV than in the plant serving a population with lower prevalence. The HIV-1
30 nucleic-acids amplified were primarily DNA and thus represented proviral DNA shedding into
31 wastewater. Additionally, we found that HIV-1 nucleic-acid concentrations in wastewater solids
32 were orders of magnitude higher than those in liquid wastewater indicating that the HIV-1 target
33 preferentially sorbs to solids. Whether concentrations of HIV-1 in wastewater solids can be used
34 to identify numbers of incident cases remains unknown. Additional work on HIV-1 shedding from
35 individuals with viremia and people living with HIV is needed to translate wastewater
36 measurements to quantitative information on infections.

37

38 **Introduction**

39 Despite advances in prevention and treatment and a decrease in new human immunodeficiency
40 virus (HIV) infections, more than 600,000 people die from acquired immunodeficiency syndrome
41 (AIDS) annually¹. The Ending the HIV Epidemic in the United States (EHE) initiative has set an
42 ambitious goal of reducing the number of new HIV infections in the US by 90% between 2019
43 and 2030. Progress, however, has been below target and disproportionately slow in some
44 demographic groups and geographic regions. At the end of 2021, there were an estimated 1.2

45 million people living with HIV (PLWH) in the US and 36,136 people who were newly
46 diagnosed^{2,3} [ref].

47
48 Minoritized people are disproportionately affected by the HIV epidemic in the US; 40% of people
49 receiving a new diagnosis in the US in 2021 were Black². Although it has been estimated that
50 87% of those living with HIV in the US are aware of their status, during the COVID-19
51 pandemic, HIV testing and new diagnoses decreased. Consequently, a greater proportion of
52 PLWH may be unaware of their status and the CDC has identified specific geographic regions
53 where underdiagnosis may be particularly problematic⁴⁻⁷. Systemic barriers to care,
54 exacerbated by the pandemic, may continue to slow progress towards EHE goals. Ongoing
55 assessment of the prevalence of HIV infection in communities, especially those underserved by
56 healthcare and testing centers, is critical to provide resources that ensure consistent testing
57 and subsequent treatment.

58
59 Wastewater monitoring has not been previously applied to HIV but could help identify trends in
60 infection prevalence and identify pockets of underdiagnosed infection. Wastewater, a naturally
61 composited biological sample that includes bodily secretions, has been used to monitor a wide
62 range of infectious diseases including respiratory viruses, enteric viruses, dengue (an arbovirus)
63 and mpox (a poxvirus).⁸⁻¹⁴ Wastewater monitoring was effectively used to support mpox
64 response at the start of the outbreak in the United States during summer 2022¹⁰; providing
65 information to respond to an outbreak that was syndemic with HIV.

66
67 Although the use of wastewater monitoring for HIV has not been explored, evidence from early
68 in the HIV pandemic suggests that viral RNA and DNA can be detected in wastewater. Several
69 studies from the early 1990's demonstrated the detection of HIV nucleic acids and intact virus in
70 natural wastewaters^{15,16} and detectability of the virus seeded in wastewater^{17,18}. These studies
71 were focused on occupational hazard, rather than monitoring. Some data indicate that HIV
72 nucleic acids are shed in urine and feces of people living with HIV (PLWH), even those who are
73 virally suppressed¹⁹⁻²¹. Contributions to wastewater therefore may be expected from people
74 living with HIV. This suggests that detection and quantification for monitoring of HIV infections at
75 the community level is a realistic possibility.

76
77 The goal of this study is to apply testing for HIV RNA and DNA to wastewater samples from two
78 adjacent counties to determine whether consistent detection and quantification of HIV nucleic
79 acids in wastewater is feasible, and explore the relationship of these measurements to the
80 overall estimated rates of people living with HIV in the associated communities.

81 82 **Methods**

83 **Study design and sample collection.** We conducted a longitudinal retrospective analysis of
84 HIV nucleic acids in wastewater solids from two wastewater treatment plants (WWTPs) in the
85 San Francisco Bay Area, California (CA), USA. Fifty milliliters (50 ml) samples of wastewater
86 solids were collected from primary clarifiers daily using sterile methods, and biobanked with
87 consent of the participating WWTPs as part of a routine wastewater monitoring program that
88 began in November 2020. Two samples per week covering a period of 26 months were selected

89 for this study. They were collected between 2 Feb 2021 and 14 April 2023 (459 samples total).
90 The two WWTPs included in the retrospective analysis serve ~75% (1,500,000 people) of Santa
91 Clara County, (SJ) and ~25% (250,000 people) of San Francisco County (OSP), CA. Further
92 WWTP descriptions are elsewhere²². These sites were selected and tested as part of a
93 retrospective study measuring nucleic acids from a panel of viruses that are candidates for
94 wastewater monitoring; HIV-1 was one of the targets selected for inclusion in this study.
95 Samples were stored at 4°C, transported to the lab, and processed within six hours. Solids were
96 then dewatered using centrifugation²³ and then frozen at -80°C for 4 - 60 weeks.

97
98 We collected additional samples over a consecutive 9 days to compare concentrations of HIV-1
99 between liquid wastewater and wastewater solids, and to compare measurements made with
100 and without a reverse-transcription step during the analytic analysis. Additional samples were
101 collected from two sites, OSP and a second site in San Francisco County (SEP) that serves
102 ~75% of the county (650,000 people). For these two sites, 24-hour composite samples of raw
103 wastewater influent (liquid) and a grab sample of solids from the primary clarifiers were
104 collected on the same day for 8 days in early July 2023, and one additional solids samples was
105 collected from SEP (Table S1, samples hereafter labeled 1-8 for OSP and SEP liquid, and 1-8
106 and 1-9 for OSP and SEP solids, respectively). All the solids samples (n=17) were tested for
107 HIV-1 target using both RT-PCR and PCR to gain insight into the proportion of HIV-1 RNA and
108 DNA in the samples, respectively (Table S1). Samples were stored at 4°C for the duration of
109 the 9 day study and then underwent pre-analytical and analytical processing without any
110 additional storage. Solids were dewatered immediately using centrifugation²³ and subsequently
111 processed for nucleic-acid extraction without storage.

112
113 **Solids pre-analytical methods.** Frozen, dewatered solids were thawed overnight at 4°C.
114 Solids were resuspended in DNA/RNA Shield (Zymo Research, Irvine, CA) at a concentration of
115 approximately 0.75 mg (wet weight)/ml. This concentration was chosen as it was shown to
116 reduce inhibition in RT-PCR applications with extracted nucleic acids²⁴. A separate aliquot of
117 dewatered solids was dried in an oven to determine its dry weight, and the calculated percent
118 solids was used to express concentrations of nucleic acid targets in units of per gram dry
119 weight. These pre-analytical methods are described thoroughly in a publicly accessible
120 protocol²⁵. Nucleic-acids were extracted from 10 replicate aliquots of dewatered settled solids
121 suspended in the DNA/RNA Shield using the Chemagic Viral DNA/RNA 300 kit H96 for the
122 Perkin Elmer Chemagic 360 (Perkin Elmer, Waltham, MA) followed by PCR inhibitor removal
123 with the Zymo OneStep-96 PCR Inhibitor Removal kit (Zymo Research, Irvine, CA). 300 µl of
124 the suspension entered into the nucleic-acid extraction process and 50 µl of nucleic-acids are
125 retrieved after the inhibitor removal kit. Negative extraction controls consisted of BCoV-vaccine
126 spiked DNA/RNA Shield. Nucleic acid extracts for the biobanked wastewater samples used in
127 the retrospective study were stored at -80°C for different amounts of time (8-273 days, median =
128 266 days) and subjected to one freeze thaw prior to analysis. Nucleic-acids from the solids
129 samples used for the liquid/solid comparison and with/without reverse-transcription were not
130 stored prior to analysis.

131

132 **Liquids pre-analytical methods.** Viral particles were concentrated from wastewater using an
133 affinity-based capture method with magnetic hydrogel Nanotrap Particles (Ceres Nanosciences,
134 Manassas, VA). Samples were spiked with BCoV before concentration, and used to assess
135 nucleic acid recovery. For each sample, 10 replicate aliquots of 10 mL of liquid wastewater were
136 concentrated using the Nanotrap Particles and Enhancement Reagent 1 on a KingFisher Flex
137 system. Nucleic acids were then extracted from each replicate with the MagMAX Viral/Pathogen
138 Nucleic Acid Isolation Kit (Applied Biosystems, Waltham, MA) using the KingFisher Flex system.
139 Resulting nucleic acids were then processed through a Zymo OneStep-96 PCR Inhibitor
140 Removal kit (Zymo Research, Irvine, CA). Each 10 ml sample resulted in 50 µl total nucleic acid
141 extract. Note that suspended solids were not removed prior to initiating these methods, and the
142 nucleic-acids were not stored prior to analysis.

143

144 **HIV (Reverse-transcription)- polymerase chain reaction assay choice**

145 We selected previously published HIV genome-specific primers and probes targeting the long
146 terminal repeat (LTR) region of the HIV-1 genome for use in this study; the assay chosen does
147 not target HIV-2²⁶. We used the 496F/546P/622R primers and probe as recommended by
148 Kibirige et al.²⁷ The assay uses primers and probes originally described in Brussels et al.²⁸ and
149 Friedrich et al.²⁹ (Table 1).

150

151 To confirm HIV-1 assay specificity, the assay was challenged with non-target viruses including
152 those in two panels purchased from Zeptomatrix (Buffalo, NY), NATRVP2.1-BIO and NATEVP-
153 C, along with HIV-2 (ATCC PTA-9773). The NATRVP2.1-BIO panel includes chemically
154 inactivated intact influenza viruses, parainfluenza viruses, adenovirus, rhinovirus,
155 metapneumovirus, and coronaviruses. The NATEVP-C panel includes chemically inactivated
156 intact coxsackieviruses, echovirus, and parechovirus. To confirm HIV-1 assay sensitivity,
157 synthetic HIV-1 RNA (ATCC VR-3351SD) was used as a positive control for HIV-1. American
158 Type Culture Collection (ATCC) controls are synthetic RNA. Nucleic-acids (NA) were extracted
159 from intact viruses using the Chemagic Viral DNA/RNA 300 kit H96 (PerkinElmer, Waltham,
160 MA).

161

162

163 **Digital-droplet RT-PCR methods.** For sensitivity and specificity testing of the HIV-1 assay,
164 nucleic-acids were used undiluted as template in digital RT-PCR reactions in a single well. No
165 template negative RT-PCR controls using molecular grade water as template were included in
166 each plate. The assay was run in simplex with only primers and probe in Table 1.

167

168 Wastewater samples were tested for HIV-1 nucleic-acids as well as pepper mild mottle virus
169 (PMMoV) using droplet digital RT-PCR. PMMoV is a pepper virus that is highly abundant in
170 wastewater across the world and used in this study as an endogenous recovery control, as well
171 as a measure of fecal strength of the wastewater³⁰. We did not utilize an exogenous extraction
172 control (such as a spiked virus like bovine coronavirus) due to the difficulty in interpreting
173 recovery with an exogenous target³¹; however this method has consistently provided high
174 recoveries approaching 100% of spiked BCoV in our laboratories²².

175

176 Each of the 10 replicate nucleic-acid wastewater extracts was used as template undiluted in its
177 own well (10 wells per sample) to measure HIV-1 and PMMoV. The HIV-1 assay was run in
178 multiplex using a probe mixing approach with seven other assays targeting genomes of
179 rotavirus, influenza A subtype markers H1 and N1, SARS-CoV-2, human norovirus GII, human
180 adenovirus group F, and West Nile virus (results not reported herein, but provided
181 elsewhere^{32,33}). Multiplexing method testing showed that presence of seven other nucleic-acid
182 targets in the multiplex reaction did not affect quantification of the HIV-1 target (Figure S1).
183 Nucleic-acids were diluted 1:100 and used as template to measure PMMoV using methods
184 outlined in detail elsewhere²² and thoroughly in a protocols.io protocol³⁴ (Table S2 provides
185 primers and probe). Extraction negative (DNA/RNA shield, 3 wells) controls, and PCR negative
186 (molecular grade water, 3 wells) and positive controls (synthetic RNA, 1 well) were run on each
187 96 well plate. Any failure of these controls resulted in re-processing of the samples, and any
188 samples with anomalously low PMMoV would also be rerun or discarded from analysis.

189
190 ddRT-PCR was performed on 20 µl samples from a 22 µl reaction volume, prepared using 5.5 µl
191 template, mixed with 5.5 µl of One-Step RT-ddPCR Advanced Kit for Probes (Bio-Rad
192 1863021), 2.2 µl of 200 U/µl Reverse Transcriptase, 1.1 µl of 300 mM dithiothreitol (DTT) and
193 primers and probes mixtures at a final concentration of 900 nM and 250 nM respectively. Primer
194 and probes for assays were purchased from Integrated DNA Technologies (IDT, San Diego,
195 CA) (Table 1 and S2).

196
197 HIV-1 nucleic-acids were quantified in the 17 solids samples collected at OSP and SEP in July
198 2023 (Table S1) using both RT-PCR and PCR without the RT step. RT-PCR was run as
199 described above for the biobanked wastewater samples. PCR was run using the same method
200 as for RT-PCR but the RT enzyme and DTT were omitted from the mastermix. As a control, the
201 concentration of the N gene of SARS-CoV-2 was examined from the multiplex assay as the N
202 gene is expected to only be detected when an RT step is included as it resides in wastewater as
203 genomic RNA. We confirmed that the N gene was not detected without the RT step indicating
204 lack of RT activity in that mastermix.

205
206 Droplets were generated using the AutoDG Automated Droplet Generator (Bio-Rad, Hercules,
207 CA). PCR was performed using Mastercycler Pro (Eppendorf, Enfield, CT) with the following
208 cycling conditions: reverse transcription at 50 °C for 60 min, enzyme activation at 95 °C for
209 5 min, 40 cycles of denaturation at 95 °C for 30 s and annealing and extension at 59 °C (for HIV-
210 1) or 56 °C (for PMMoV) for 30 s, enzyme deactivation at 98 °C for 10 min then an indefinite hold
211 at 4 °C. The ramp rate for temperature changes were set to 2 °C/second and the final hold at
212 4 °C was performed for a minimum of 30 min to allow the droplets to stabilize. Droplets were
213 analyzed using the QX200 or the QX600 Droplet Reader (Bio-Rad). A well had to have over
214 10,000 droplets for inclusion in the analysis. All liquid transfers were performed using the Agilent
215 Bravo (Agilent Technologies, Santa Clara, CA).

216
217 Thresholding was done using QuantaSoft™ Analysis Pro Software (Bio-Rad, version 1.0.596)
218 for data generated using the QX200 and QX Manager Software (Bio-Rad, version 2.0) for data

219 generated using the QX600. In order for a sample to be recorded as positive, it had to have at
220 least 3 positive droplets. Replicate wells were merged for analysis of each sample.

221
222 Dimensional analysis was used to convert concentrations of nucleic-acid targets from copies per
223 reaction to copies per dry weight of solids (cp/g) or copies per milliliter (cp/ml) of influent.
224 Measurement errors are reported as standard deviations. The lowest detectable concentrations
225 were ~500-1000 cp/g for solids and 1 cp/ml for liquids, respectively, and is equivalent to the
226 concentration giving rise to three positive droplets across 10 merged well. The range provided
227 for solids reflects differences in the dry weight of different solids samples. Wastewater data for
228 the retrospective study are publicly available through the Stanford Digital Repository
229 (<https://doi.org/10.25740/yz257qj0009>).

230
231 **Statistics**
232 A Wilcoxon rank sum test was used to determine if there were significant differences in the
233 concentrations of nucleic acids between the two utilities with the alternative hypothesis that
234 concentrations were higher at OSP than SJ. A Wilcoxon signed rank test was used to determine
235 whether there were significant differences in the concentration estimated between matched
236 samples tested with and without a reverse transcription step. A Wilcoxon signed rank test was
237 also used to determine whether there were significant differences in the concentration estimated
238 on a per mass basis (cp/g and cp/mL) between matched liquid and solids samples.

239
240 **Clinical data**
241 Estimated annual numbers of incident cases of HIV were obtained at the county level from
242 publicly available county health department surveillance summaries for 2021 and 2022^{5,35-37}.
243 Estimates of PLWH and the proportions with viral suppression were also obtained from these
244 reports. Data for 2023 was not available at the time of writing; further details of health
245 department reporting and definitions are available in the SI. Rates of PLWH per county were
246 calculated based on yearly population denominators obtained from the State of California,
247 Department of Finance, Demographic Research Unit³⁸.

248
249
250 **Results**
251
252 **Quality control.** Positive and negative extraction and PCR controls were positive and negative,
253 respectively indicating assays performed and no evidence of contamination. The PMMoV
254 endogenous control, as expected, was detected at relatively high concentrations in wastewater
255 (median (range) log₁₀-transformed PMMoV = 9.1 (8.5-10.2) and 8.7 (8.1-9.5) log₁₀ copies/g at
256 SJ and OSP, respectively). Given that the lowest measurements at the two sites were within an
257 order of magnitude of the medians, we concluded that there was no gross extraction failure.
258 Further details of the methods and controls per the Environmental Microbiology Minimal
259 Information (EMMI) guidelines can be found in the supporting materials (Figure S2).

260
261 We compared PMMoV measured using the biobanked and stored samples to PMMoV
262 measured in the same samples when processed immediately for a routine wastewater

263 surveillance project As described in Boehm et al.³⁹, median (interquartile range) ratio of PMMoV
264 RNA measurements made in this study to those made using fresh samples was 0.9 (0.6-1.2) at
265 SJ and 1.0 (0.7-1.4) at OSP suggesting limited degradation of the PMMoV RNA target in the
266 stored and freeze thawed samples. It should be noted that there could have still been
267 degradation of HIV-1 nucleic-acids in these biobanked samples, especially since the N gene
268 from SARS-CoV-2 has shown some losses under these storage conditions³⁹; however, sample
269 storage is essential for retrospective work.

270
271 **Analysis of HIV-1 in wastewater.** HIV-1 nucleic-acids (NA) were detected consistently
272 throughout the retrospective study period in both OSP and SJ wastewater (Figure 1). HIV-1 NA
273 were detected in 94% (215/230) of samples from OSP and 23% (53/229) of samples from SJ.
274 Measured HIV-1 NA concentrations were significantly higher at OSP compared to SJ (Wilcoxon
275 rank sum test, $p < 10^{-16}$, Figure 1). At OSP, concentrations ranged from non-detect to 3.9×10^5
276 cp/g with a median 7.3×10^3 cp/g. At SJ, concentrations ranged from non-detect to 1.1×10^5 cp/g
277 with a median of non-detect.

278
279 Measured HIV-1 NA concentrations were significantly different in solids compared to liquids
280 (Wilcoxon signed rank test, $p < 10^{-3}$). Concentrations in solids were enriched by several orders
281 of magnitude compared to liquids on a per mass basis with a median concentration of 1 cp/mL
282 in liquids and 6142 cp/g in solids across all samples included in the comparison (Fig 2). Liquid
283 samples also had a higher rate of nondetection for HIV-1; HIV-1 NA were not detected in 4/16
284 liquids samples and 2/16 solids samples. One sample had no HIV-1 NA detected by either
285 method.

286
287 When analyzed with and without a reverse transcription step, HIV-1 NA in wastewater were
288 significantly different (Wilcoxon signed rank test, $p = 0.03$) but the magnitude of the difference
289 between the two was small (Fig 3; with RT median = 5773 cp/g and mean = 8734 cp/g, without
290 RT median = 8012 cp/g and mean = 10296 cp/g).

291
292 **Clinical Data.** The number of new diagnoses of HIV from San Francisco was similar to the
293 number of new diagnoses in Santa Clara County for both 2021 and 2022 (Table 2), however as
294 the population of Santa Clara County is much larger, the rate of new diagnoses per 100,000
295 residents was higher in SF than in SCC. The number and rate of PLWH was also higher in San
296 Francisco County compared to Santa Clara County. The two counties have similar rates of viral
297 suppression, estimated at 72-73% for San Francisco and 70.2-68.1% for Santa Clara County
298 from 2021 - 2022.

299
300 These county level HIV prevalence estimates serve as imperfect proxies for the population living
301 in the OSP and SJ sewersheds. OSP WWTP serves 25% of the population of San Francisco
302 county, and annual reports show that the geographic area served by the plant has lower rates of
303 PLWH than the county as a whole^{37,40}. Neighborhoods within the OSP service area are
304 described as having a rate of 317-999/100,000 PLWH in 2021, and 310-799/100,000 PLWH in
305 2022. SJ WWTP serves 75% of the population of Santa Clara County.

306

307 **Comparison of clinical and wastewater data.** Overall, the rate of detection and
308 concentrations of HIV-1 nucleic acids were higher in San Francisco County than in Santa Clara
309 County and the rates of new HIV diagnoses and rates of PLWH were also higher in San
310 Francisco County. No statistics are applied to this comparison as clinical data is available at an
311 annual scale and N = 4, limiting appropriate hypothesis testing.

312

313 **Discussion**

314 This study demonstrates a first proof of concept that HIV-1 nucleic-acids can be reliably
315 detected and quantified in wastewater, and rates of detection and concentration are aligned with
316 known information about the overall prevalence of PLWH in the associated communities. HIV-1
317 nucleic acids were consistently detected in wastewater from WWTPs in the San Francisco Bay
318 Area, California (CA), USA, with differences in wastewater rates of detection concentrations that
319 mirrored clinical surveillance data between counties. Both the rate of detection and
320 concentrations of HIV-1 nucleic acids were higher in San Francisco County than in Santa Clara
321 County, consistent with the higher rate of both PLWH and new HIV diagnoses in San Francisco.
322 Although the sewershed area served by the San Francisco County WWTP covers a part of the
323 city that has relatively lower prevalence of residents with PLWH, even these areas have
324 reported prevalence that is approximately double or more the prevalence in Santa Clara County.

325

326 HIV-1 nucleic acids were detected from both the liquid and solid portion of wastewater from two
327 sites in San Francisco County. The concentrations in solids were several orders of magnitude
328 higher on a per mass basis than those in liquid, and the rate of non-detection was slightly higher
329 in liquid samples. This suggests that HIV-1 nucleic acids can be successfully quantified in
330 wastewater utilizing either the solid or the liquid matrix, but the use of solids may improve the
331 sensitivity of the measurements. Future work utilizing liquids and solids across a wider range of
332 anticipated concentration of HIV-1 NA would help determine the performance of methods
333 utilizing each matrix at different levels.

334

335 The field of wastewater monitoring for infectious disease has grown rapidly in recent years and
336 has not only become a part of many public health department's approach to infectious disease
337 surveillance, it has been successfully used to monitor diseases like mpox that interact with HIV.
338 Wastewater monitoring has not, however, been previously used to support HIV monitoring. This
339 is likely because HIV has a number of important differences from other viruses commonly
340 monitored using wastewater such as respiratory and enteric viruses, particularly when
341 considering the possibility of long term shedding and how this relates to individuals with different
342 disease outcomes^{19,20}.

343

344 There are limited quantitative data on the concentration of HIV-1 nucleic-acids in excretions.
345 While individuals with active infections may shed viral RNA, PLWH who are virally suppressed
346 may still excrete HIV-1 DNA¹⁹. In this study, we quantified total HIV-1 nucleic-acids which
347 include both RNA and DNA; the methods we used cannot distinguish between the two. The
348 overall similarity in concentrations of HIV nucleic-acids with and without reverse transcription in
349 a small subset of samples suggests that the majority of the nucleic-acids detected in wastewater
350 are DNA. Further work will need to be done to better understand shedding dynamics of HIV-1

351 nucleic-acids in PLWH and those with viremia to provide a foundation to further interpret these
352 results.

353
354 This work presents a first proof of concept; in order to make HIV monitoring in wastewater a tool
355 that is useful for public health response to the HIV epidemic more work is necessary to
356 understand the relationship between these measurements and PLWH and even more
357 importantly the people living with undiagnosed or unmanaged HIV in the community. Multiple
358 assays in the future might be used to distinguish active HIV replication from the proviral
359 reservoir, both of which may be represented by nucleic acids in wastewater, an increase in
360 cases that are untreated vs effectively treated may be detectable. Targets in wastewater that
361 identify HIV resistance may help inform initial antiretroviral therapy (ART) choices (e.g., is the
362 virus mutating, is pre-exposure prophylaxis (PrEP) contributing to resistance, etc.) without
363 identifying or linking individuals.

364
365 Despite CDC recommendations for routine HIV screening in healthcare settings since 2006⁴¹,
366 HIV testing rates during ambulatory care visits have remained low^{7,42}. With barriers to
367 implementation ranging from provider perceptions of low HIV risk to institutional concerns
368 surrounding allocation of limited resources^{7,42}, recent initiatives, such as the EHE, propose
369 refocused efforts to target areas with the highest burden of HIV^{43,44}. With more information from
370 studies on HIV NA shedding and a closer comparison of HIV infections and wastewater data to
371 guide interpretation of presence and concentrations of HIV NA targets in wastewater and the
372 relationship to infection and disease outcomes, data on HIV from wastewater may be useful
373 both at a facility and community level for monitoring trends to help inform screening efforts.
374 Tools like this would provide opportunities to compare the burden of HIV across geographic
375 areas, to provide information on the scope of the HIV burden in institutions like hospitals and
376 correctional facilities, and possibly to determine patterns in resistance. This may be used to
377 determine times and places when increased screening at sites may be useful, feeding into
378 existing frameworks that identify priority areas for intervention.

379
380 **Acknowledgements.** We acknowledge Gregory Ostolaza Bravo for contributions to wastewater
381 sample analysis.

382
383
384

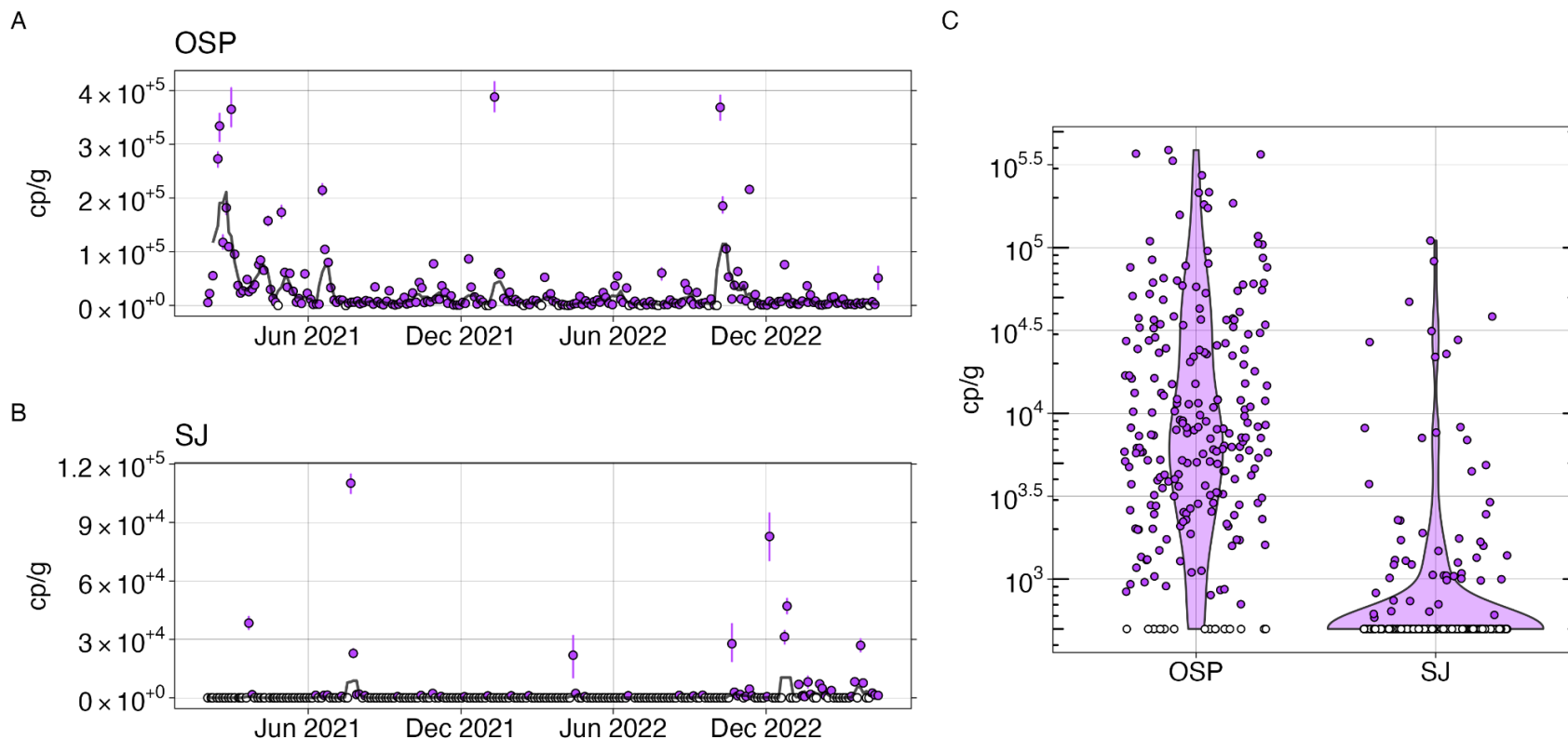
385 **Table 1.** Primer and hydrolysis probes targeting the long terminal repeat (LTR) region of HIV-1.
 386 The amplicon size is 127 basepairs (bp). The HIV-1 probe contained Cyanine-5 (Cy5)
 387 fluorescent molecule, ZEN, a proprietary internal quencher from Integrated DNA Technologies
 388 (Coralville, IA, USA); and IBFQ, Iowa Black FQ.
 389

	Sequence
Forward	GGCTAACTAGGGAACCCACTG
Reverse	TCCACACTGACTAAAAGGGTCTGA
Probe	CACTCAAGGCAAGCTTTATTGAGGC

390
 391 **Table 2.** Numbers and rates of PLWH, %PLWH who were virally suppressed, and new HIV
 392 diagnoses in San Francisco and Santa Clara Counties in 2021 and 2022.
 393

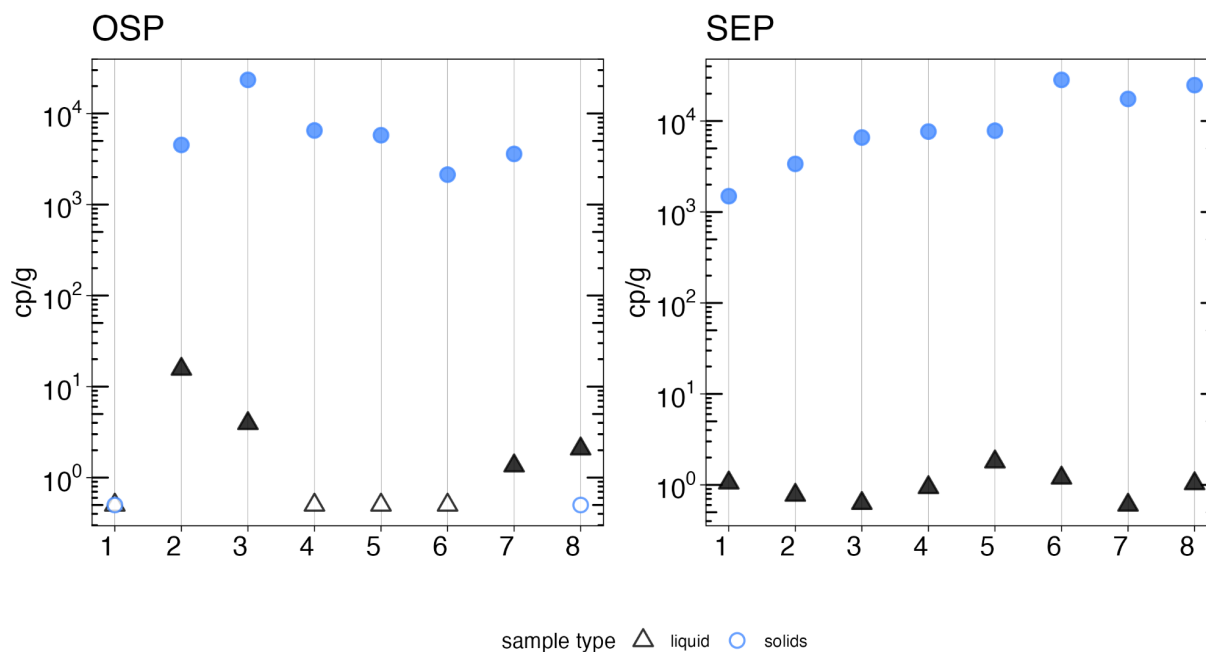
	San Francisco County		Santa Clara County	
	2021	2022	2021	2022
Total PLWH, N	11830	11798	3618	3770
PLWH per 100,000 population*	1405.5	1399.4	190.4	198.1
New diagnoses, N	166	157	133	165
New diagnoses per 100 000 population*	19.7	18.6	7.0	8.7
Viral suppression, %	72%	73%	70.2%	68.1%

394



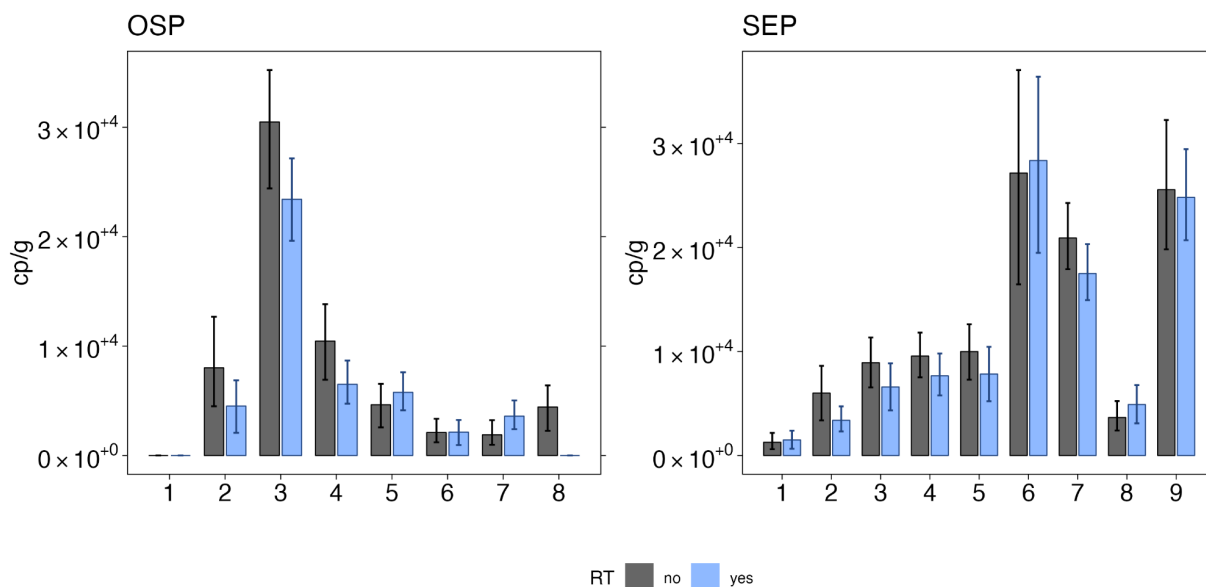
395
 396 **Fig 1. Wastewater concentrations of HIV nucleic-acids.** Left: Concentration of HIV nucleic-acids in wastewater solids from OSP
 397 (A) and SJ (B) expressed in terms of copies of the target per gram dry weight of solids found in wastewater. Open circles show
 398 where HIV nucleic-acids were not detected, and the errors on each point represent standard deviations (68% confidence intervals)
 399 from the droplet digital RT-PCR measurement and include Poisson error as well as variation among replicate wells. The black line
 400 represents the 5-sample smoothed and trimmed average. Right: Distribution of the concentration of HIV nucleic-acids in wastewater
 401 solids from OSP and SJ (C), in terms of copies of the target per gram dry weight of solids found in wastewater. Open circles show
 402 where HIV nucleic-acids were not detected.

403
404



405
406 **Fig 2. Comparison of HIV nucleic acid quantification in liquids and solids.** Concentrations
407 of HIV nucleic acids in wastewater liquids (black triangles) and solids (blue circles) from OSP
408 and SEP expressed in terms of copies of the target per mL liquid wastewater or grams dry
409 weight of solids found in wastewater. Open circles or triangles show where HIV nucleic acids
410 were not detected.
411

412
413



414
415
416
417
418
419
420
421

Fig 3. Comparison of HIV nucleic acid quantification with and without RT. Concentrations of HIV nucleic acids in wastewater solids from OSP and SEP are expressed in terms of copies of the target per gram dry weight of solids found in wastewater for quantification with the use of RT (blue) and without (black). Errors on each bar represent standard deviations (68% confidence intervals) from the droplet digital RT-PCR measurement and include Poisson error as well as variation among replicate wells.

422

423

424 References

425

- 426 (1) *Why the HIV epidemic is not over*. [https://www.who.int/news-room/spotlight/why-the-hiv-](https://www.who.int/news-room/spotlight/why-the-hiv-epidemic-is-not-over)
427 [epidemic-is-not-over](https://www.who.int/news-room/spotlight/why-the-hiv-epidemic-is-not-over) (accessed 2024-01-29).
- 428 (2) *HIV Surveillance | Reports| Resource Library | HIV/AIDS | CDC*.
429 <https://www.cdc.gov/hiv/library/reports/hiv-surveillance.html> (accessed 2024-03-08).
- 430 (3) *HIV Surveillance | Reports| Resource Library | HIV/AIDS | CDC*.
431 <https://www.cdc.gov/hiv/library/reports/hiv-surveillance.html> (accessed 2024-03-08).
- 432 (4) *CDC-Funded HIV Testing in the United States, Puerto Rico, and the U.S. Virgin Islands, 2020.*; Centers for Disease Control and Prevention, 2022.
433 <https://www.cdc.gov/hiv/library/reports/index.html> (accessed 2024-03-10).
- 434 (5) *CDC-Funded HIV Testing in the United States, Puerto Rico, and the U.S. Virgin Islands, 2021.*; Centers for Disease Control and Prevention, 2023.
435 <https://www.cdc.gov/hiv/library/reports/index.html> (accessed 2024-03-10).
- 436 (6) *Estimated HIV Incidence and Prevalence in the United States, 2017–2021. HIV*
437 *Surveillance Supplemental Report, 2023*; 28 (No.3); Centers for Disease Control and
438 Prevention, 2023. <https://www.cdc.gov/hiv/library/reports/index.html> (accessed 2024-03-
439 10).
- 440 (7) Hoover, K. W. HIV Services and Outcomes During the COVID-19 Pandemic — United
441 States, 2019–2021. *MMWR Morb. Mortal. Wkly. Rep.* **2022**, 71.
442 <https://doi.org/10.15585/mmwr.mm7148a1>.
- 443 (8) Boehm, A. B.; Hughes, B.; Duong, D.; Chan-Herur, V.; Buchman, A.; Wolfe, M. K.; White,
444 B. J. Wastewater Concentrations of Human Influenza, Metapneumovirus, Parainfluenza,
445 Respiratory Syncytial Virus, Rhinovirus, and Seasonal Coronavirus Nucleic-Acids during
446 the COVID-19 Pandemic: A Surveillance Study. *Lancet Microbe* **2023**, 4 (5).
447 [https://doi.org/10.1016/S2666-5247\(22\)00386-X](https://doi.org/10.1016/S2666-5247(22)00386-X).
- 448 (9) Peccia, J.; Zulli, A.; Brackney, D. E.; Grubaugh, N. D.; Kaplan, E. H.; Casanovas-Massana,
449 A.; Ko, A. I.; Malik, A. A.; Wang, D.; Wang, M.; Warren, J. L.; Weinberger, D. M.; Omer, S.
450 B. *SARS-CoV-2 RNA Concentrations in Primary Municipal Sewage Sludge as a Leading*
451 *Indicator of COVID-19 Outbreak Dynamics*; preprint; *Epidemiology*, 2020.
452 <https://doi.org/10.1101/2020.05.19.20105999>.
- 453 (10) Wolfe, M. K.; Yu, A. T.; Duong, D.; Rane, M. S.; Hughes, B.; Chan-Herur, V.; Donnelly, M.;
454 Chai, S.; White, B. J.; Vugia, D. J.; Boehm, A. B. Use of Wastewater for Mpox Outbreak
455 Surveillance in California. *N. Engl. J. Med.* **2023**, 388 (6), 570–572.
456 <https://doi.org/10.1056/NEJMc2213882>.
- 457 (11) Boehm, A. B.; Wolfe, M. K.; White, B. J.; Hughes, B.; Duong, D.; Banaei, N.; Bidwell, A.
458 Human Norovirus (HuNoV) GII RNA in Wastewater Solids at 145 United States
459 Wastewater Treatment Plants: Comparison to Positivity Rates of Clinical Specimens and
460 Modeled Estimates of HuNoV GII Shedders. *J. Expo. Sci. Environ. Epidemiol.* **2023**, 1–8.
461 <https://doi.org/10.1038/s41370-023-00592-4>.
- 462 (12) Boehm, A. B.; Hughes, B.; Duong, D.; Banaei, N.; White, B. J.; Wolfe, M. K. A
463 Retrospective Longitudinal Study of Adenovirus Group F, Norovirus GI and GII, Rotavirus,
464 and Enterovirus Nucleic-Acids in Wastewater Solids at Two Wastewater Treatment Plants:
465 Solid-Liquid Partitioning and Relation to Clinical Testing Data. medRxiv August 31, 2023, p
466 2023.08.29.23294748. <https://doi.org/10.1101/2023.08.29.23294748>.
- 467 (13) Wolfe, M. K.; Topol, A.; Knudson, A.; Simpson, A.; White, B.; Vugia, D. J.; Yu, A. T.; Li, L.;
468 Balliet, M.; Stoddard, P.; Han, G. S.; Wigginton, K. R.; Boehm, A. B. High-Frequency,
469 High-Throughput Quantification of SARS-CoV-2 RNA in Wastewater Settled Solids at Eight
470
471

- 472 Publicly Owned Treatment Works in Northern California Shows Strong Association with
473 COVID-19 Incidence. *mSystems* 6 (5), e00829-21.
474 <https://doi.org/10.1128/mSystems.00829-21>.
- 475 (14) Wolfe, M. K.; Duong, D.; Bakker, K. M.; Ammerman, M.; Mortenson, L.; Hughes, B.; Arts,
476 P.; Luring, A. S.; Fitzsimmons, W. J.; Bendall, E.; Hwang, C. E.; Martin, E. T.; White, B.
477 J.; Boehm, A. B.; Wigginton, K. R. Wastewater-Based Detection of Two Influenza
478 Outbreaks. *Environ. Sci. Technol. Lett.* **2022**, 9 (8), 687–692.
479 <https://doi.org/10.1021/acs.estlett.2c00350>.
- 480 (15) Preston, D. R.; Farrah, S. R.; Bitton, G.; Chaudhry, G. R. Detection of Nucleic Acids
481 Homologous to Human Immunodeficiency Virus in Wastewater. *J. Virol. Methods* **1991**, 33
482 (3), 383–390. [https://doi.org/10.1016/0166-0934\(91\)90038-2](https://doi.org/10.1016/0166-0934(91)90038-2).
- 483 (16) Ansari, S. A.; Farrah, S. R.; Chaudhry, G. R. Presence of Human Immunodeficiency Virus
484 Nucleic Acids in Wastewater and Their Detection by Polymerase Chain Reaction. *Appl.*
485 *Environ. Microbiol.* **1992**, 58 (12), 3984–3990.
- 486 (17) Casson, L. W.; Ritter, M. O. D.; Cossentino, L. M.; Gupta, P. Survival and Recovery of
487 Seeded HIV in Water and Wastewater. *Water Environ. Res.* **1997**, 69 (2), 174–179.
- 488 (18) Moore, B. E. Survival of Human Immunodeficiency Virus (HIV), HIV-Infected Lymphocytes,
489 and Poliovirus in Water. *Appl. Environ. Microbiol.* **1993**, 59 (5), 1437–1443.
490 <https://doi.org/10.1128/aem.59.5.1437-1443.1993>.
- 491 (19) Chakrabarti, A. K.; Caruso, L.; Ding, M.; Shen, C.; Buchanan, W.; Gupta, P.; Rinaldo, C.
492 R.; Chen, Y. Detection of HIV-1 RNA/DNA and CD4 mRNA in Feces and Urine from
493 Chronic HIV-1 Infected Subjects with and without Anti-Retroviral Therapy. *AIDS Res. Ther.*
494 **2009**, 6, 20. <https://doi.org/10.1186/1742-6405-6-20>.
- 495 (20) van der Hoek, L.; Boom, R.; Goudsmit, J.; Snijders, F.; Sol, C. J. Isolation of Human
496 Immunodeficiency Virus Type 1 (HIV-1) RNA from Feces by a Simple Method and
497 Difference between HIV-1 Subpopulations in Feces and Serum. *J. Clin. Microbiol.* **1995**, 33
498 (3), 581–588. <https://doi.org/10.1128/jcm.33.3.581-588.1995>.
- 499 (21) Zuckerman, R. A.; Whittington, W. L. H.; Celum, C. L.; Collis, T. K.; Lucchetti, A. J.;
500 Sanchez, J. L.; Hughes, J. P.; Sanchez, J. L.; Coombs, R. W. Higher Concentration of HIV
501 RNA in Rectal Mucosa Secretions than in Blood and Seminal Plasma, among Men Who
502 Have Sex with Men, Independent of Antiretroviral Therapy. *J. Infect. Dis.* **2004**, 190 (1),
503 156–161. <https://doi.org/10.1086/421246>.
- 504 (22) Wolfe, M. K.; Topol, A.; Knudson, A.; Simpson, A.; White, B.; Duc, V.; Yu, A.; Li, L.; Balliet,
505 M.; Stoddard, P.; Han, G.; Wigginton, K. R.; Boehm, A. High-Frequency, High-Throughput
506 Quantification of SARS-CoV-2 RNA in Wastewater Settled Solids at Eight Publicly Owned
507 Treatment Works in Northern California Shows Strong Association with COVID-19
508 Incidence. *mSystems* **2021**, 6 (5), e00829-21. <https://doi.org/10.1128/mSystems.00829-21>.
- 509 (23) Topol, A.; Wolfe, M.; White, B.; Wigginton, K.; Boehm, A. High Throughput Pre-Analytical
510 Processing of Wastewater Settled Solids for SARS-CoV-2 RNA Analyses. *protocols.io*
511 **2021**. <https://doi.org/dx.doi.org/10.17504/protocols.io.btyqnpvw>.
- 512 (24) Boehm, A. B.; Wolfe, M. K.; Wigginton, K. R.; Bidwell, A.; White, B. J.; Hughes, B.; Duong;
513 Chan-Herur, V.; Bischel, H. N.; Naughton, C. C. Human Viral Nucleic Acids Concentrations
514 in Wastewater Solids from Central and Coastal California USA. *Sci. Data* **2023**, 10, 396.
- 515 (25) Topol, A.; Wolfe, M.; Wigginton, K.; White, B.; Boehm, A. High Throughput RNA Extraction
516 and PCR Inhibitor Removal of Settled Solids for Wastewater Surveillance of SARS-CoV-2
517 RNA. *protocols.io* **2021**. <https://doi.org/dx.doi.org/10.17504/protocols.io.btyrnpv6>.
- 518 (26) Visseaux, B.; Damond, F.; Matheron, S.; Descamps, D.; Charpentier, C. Hiv-2 Molecular
519 Epidemiology. *Infect. Genet. Evol.* **2016**, 46, 233–240.
520 <https://doi.org/10.1016/j.meegid.2016.08.010>.
- 521 (27) Kibirige, C. N.; Manak, M.; King, D.; Abel, B.; Hack, H.; Wooding, D.; Liu, Y.; Fernandez,
522 N.; Dalel, J.; Kaye, S.; Imami, N.; Jagodzinski, L.; Gilmour, J. Development of a Sensitive,

- 523 Quantitative Assay with Broad Subtype Specificity for Detection of Total HIV-1 Nucleic
524 Acids in Plasma and PBMC. *Sci. Rep.* **2022**, 12 (1), 1550. [https://doi.org/10.1038/s41598-](https://doi.org/10.1038/s41598-021-03016-1)
525 021-03016-1.
- 526 (28) Brussel, A.; Delelis, O.; Sonigo, P. Alu-LTR Real-Time Nested PCR Assay for Quantifying
527 Integrated HIV-1 DNA. In *Human Retrovirus Protocols: Virology and Molecular Biology*;
528 Zhu, T., Ed.; Methods in Molecular Biology™; Humana Press: Totowa, NJ, 2005; pp 139–
529 154. <https://doi.org/10.1385/1-59259-907-9:139>.
- 530 (29) Friedrich, B.; Li, G.; Dziuba, N.; Ferguson, M. R. Quantitative PCR Used to Assess HIV-1
531 Integration and 2-LTR Circle Formation in Human Macrophages, Peripheral Blood
532 Lymphocytes and a CD4+ Cell Line. *Viol. J.* **2010**, 7 (1), 354.
533 <https://doi.org/10.1186/1743-422X-7-354>.
- 534 (30) McClary-Gutierrez, J. S.; Aanderud, Z. T.; Al-faliti, M.; Duvallet, C.; Gonzalez, R.; Guzman,
535 J.; Holm, R. H.; Jahne, M. A.; Kantor, R. S.; Katsivelis, P.; Kuhn, K. G.; Langan, L. M.;
536 Mansfeldt, C.; McLellan, S. L.; Mendoza Grijalva, L. M.; Murnane, K. S.; Naughton, C. C.;
537 Packman, A. I.; Paraskevopoulos, S.; Radniecki, T. S.; Roman, F. A.; Shrestha, A.;
538 Stadler, L. B.; Steele, J. A.; Swalla, B. M.; Vikesland, P.; Wartell, B.; Wilusz, C. J.; Wong,
539 J. C. C.; Boehm, A. B.; Halden, R. U.; Bibby, K.; Delgado Vela, J. Standardizing Data
540 Reporting in the Research Community to Enhance the Utility of Open Data for SARS-CoV-
541 2 Wastewater Surveillance. *Environ. Sci. Water Res. Technol.* **2021**, 7 (9), 1545–1551.
542 <https://doi.org/10.1039/D1EW00235J>.
- 543 (31) Kantor, R. S.; Nelson, K. L.; Greenwald, H. D.; Kennedy, L. C. Challenges in Measuring
544 the Recovery of SARS-CoV-2 from Wastewater. *Environ. Sci. Technol.* **2021**, 55 (6),
545 3514–3519. <https://doi.org/10.1021/acs.est.0c08210>.
- 546 (32) Boehm, A. B.; Wolfe, M. K.; White, B. J.; Hughes, B.; Duong, D.; Bidwell, A. More than a
547 Triplememic: Influenza A Virus, Respiratory Syncytial Virus, SARS-CoV-2, and Human
548 Metapneumovirus in Wastewater during Winter 2022–2023. *Environ. Sci. Technol. Lett.*
549 **2023**, 10 (8), 622–627. <https://doi.org/10.1021/acs.estlett.3c00385>.
- 550 (33) Boehm, A. B.; Wolfe, M. K.; White, B. J.; Hughes, B.; Duong, D. Two Years of Longitudinal
551 Measurements of Human Adenovirus Group F, Norovirus GI and GII, Rotavirus,
552 Enterovirus, Enterovirus D68, Hepatitis A Virus, Candida Auris, and West Nile Virus
553 Nucleic-Acids in Wastewater Solids: A Retrospective Study at Two Wast... *medRxiv* **2023**.
554 <https://doi.org/10.1101/2023.08.22.23294424>.
- 555 (34) Topol, A.; Wolfe, M.; White, B.; Wigginton, K.; Boehm, A. High Throughput SARS-COV-2,
556 PMMOV, and BCoV Quantification in Settled Solids Using Digital RT-PCR. *protocols.io*
557 **2021**. <https://doi.org/dx.doi.org/10.17504/protocols.io.btywnpxe>.
- 558 (35) *Sexually Transmitted Infections (STI) and HIV Epidemiology Annual Report, 2022*; County
559 of Santa Clara Public Health Department Infectious Disease and Response Branch, 2023.
560 [https://publichealth.sccgov.org/sites/g/files/exjcpb916/files/documents/STIHIV_AnnualRep](https://publichealth.sccgov.org/sites/g/files/exjcpb916/files/documents/STIHIV_AnnualReport_2022.pdf)
561 [ort_2022.pdf](https://publichealth.sccgov.org/sites/g/files/exjcpb916/files/documents/STIHIV_AnnualReport_2022.pdf) (accessed 2024-03-10).
- 562 (36) *Sexually Transmitted Infections (STI) and HIV Epidemiology Annual Report, 2021*; County
563 of Santa Clara Public Health Department Infectious Disease and Response Branch, 2023.
564 [https://publichealth.sccgov.org/sites/g/files/exjcpb916/files/documents/STIHIV_AnnualRep](https://publichealth.sccgov.org/sites/g/files/exjcpb916/files/documents/STIHIV_AnnualReport_2021.pdf)
565 [ort_2021.pdf](https://publichealth.sccgov.org/sites/g/files/exjcpb916/files/documents/STIHIV_AnnualReport_2021.pdf) (accessed 2024-03-10).
- 566 (37) *HIV Epidemiology Annual Report 2022*; San Francisco Department of Public Health
567 Population Health Division HIV Epidemiology Section, 2023.
568 <https://www.sfdph.org/dph/files/reports/RptsHIVAIDS/AnnualReport2022-Orange.pdf>
569 (accessed 2024-03-10).
- 570 (38) *E-2. California County Population Estimates and Components of Change by Year — July*
571 *1, 2020-2023 | Department of Finance*; 2023.
572 <https://dof.ca.gov/forecasting/demographics/estimates/e-2/> (accessed 2024-03-11).
- 573 (39) Boehm, A. B.; Hughes, B.; Duong, D.; Banaei, N.; White, B. J.; Wolfe, M. K. A

- 574 Retrospective Longitudinal Study of Adenovirus Group F, Norovirus GI and GII, Rotavirus,
575 and Enterovirus Nucleic-Acids in Wastewater Solids at Two Wastewater Treatment Plants:
576 Solid-Liquid Partitioning and Relation to Clinical Testing Data. *Revis. MSphere* **2024**.
577 (40) *HIV Epidemiology Annual Report 2021*; San Francisco Department of Public Health
578 Population Health Division HIV Epidemiology Section, 2022.
579 <https://www.sfdph.org/dph/files/reports/RptsHIVAIDS/AnnualReport2021-Red.pdf>
580 (accessed 2024-03-10).
- 581 (41) Branson, B. M.; Handsfield, H. H.; Lampe, M. A.; Janssen, R. S.; Taylor, A. W.; Lyss, S. B.;
582 Clark, J. E.; Centers for Disease Control and Prevention (CDC). Revised
583 Recommendations for HIV Testing of Adults, Adolescents, and Pregnant Women in
584 Health-Care Settings. *MMWR Recomm. Rep. Morb. Mortal. Wkly. Rep. Recomm. Rep.*
585 **2006**, 55 (RR-14), 1–17; quiz CE1-4.
- 586 (42) Olatosi, B.; Siddiqi, K. A.; Conserve, D. F. Towards Ending the Human Immunodeficiency
587 Virus Epidemic in the US. *Medicine (Baltimore)* **2020**, 99 (2), e18525.
588 <https://doi.org/10.1097/MD.00000000000018525>.
- 589 (43) Berg, L. J.; Delgado, M. K.; Ginde, A. A.; Montoy, J. C.; Bendavid, E.; Camargo, C. A.
590 Characteristics of U.S. Emergency Departments That Offer Routine Human
591 Immunodeficiency Virus Screening. *Acad. Emerg. Med. Off. J. Soc. Acad. Emerg. Med.*
592 **2012**, 19 (8), 894–900. <https://doi.org/10.1111/j.1553-2712.2012.01401.x>.
- 593 (44) Shirreffs, A.; Lee, D. P.; Henry, J.; Golden, M. R.; Stekler, J. D. Understanding Barriers to
594 Routine HIV Screening: Knowledge, Attitudes, and Practices of Healthcare Providers in
595 King County, Washington. *PLOS ONE* **2012**, 7 (9), e44417.
596 <https://doi.org/10.1371/journal.pone.0044417>.
597
598
599
600