

1 **Prevalence of differences of sex development in Switzerland from 2000-2019**

2 Sara Metzger¹, Grit Sommer^{1,2,3*#}, Christa E. Flück^{1,2*}, on behalf of the Swiss DSD Cohort Study
3 Group

4 *co-last authors

5

6 ¹ Division of Pediatric Endocrinology, Diabetology and Metabolism, Department of Pediatrics,
7 Inselspital, Bern University Hospital, University of Bern, Switzerland

8 ² Department of Biomedical Research, University of Bern, Switzerland

9 ³ Institute of Social and Preventive Medicine, University of Bern, Switzerland

10

11 Members of the Swiss DSD Cohort Study Group in alphabetical order: Christine Aebi-Ochsner,
12 Private Practice for Paediatric Endocrinology, Biel Switzerland; Kanetee Busiah, Department of
13 Pediatric Endocrinology and Diabetology, CHUV, University Children's Hospital, Lausanne,
14 Switzerland; Mirjam Dirlwanger, Pediatric Endocrine and Diabetes Unit, Children's University
15 Hospital Geneva, Geneva, Switzerland; Sylvia Gschwend, Private Practice for Paediatric
16 Endocrinology, Zug, Switzerland; Melanie Hess, Pediatric Endocrinology and Diabetology,
17 University Children's Hospital Basel, Basel, Switzerland; Beatrice Kuhlmann, Pediatric
18 Endocrinology, Cantonal Hospital Aarau, Aarau, Switzerland and Private Practice for Paediatric
19 Endocrinology, Basel, Switzerland; Dagmar l'Allemand, Department of Endocrinology,
20 Children's Hospital of Eastern Switzerland, St. Gallen, Switzerland; Mariarosaria Lang,
21 Paediatric Endocrinology and Diabetology, University Children's Hospital Zurich, Zurich,
22 Switzerland; Kees Noordam, Centre for Paediatric Endocrinology Zurich (PEZZ), Zurich,
23 Switzerland; Franziska Phan-Hug, Department of Pediatrics, Hospital Morges, Morges and
24 Department of Pediatrics, Hospital Wallis, Sion, Switzerland; Ursina Probst, Department of
25 Pediatrics, Cantonal Hospital Winterthur, Winterthur, Switzerland; Maristella Santi, Department
26 of Pediatrics, Cantonal Hospital Lucerne, Lucerne, Switzerland; Silvia Schmid, Private Practice

27 for Paediatric Endocrinology, Dubendorf, Switzerland; Valérie Schwitzgebel, Pediatric Endocrine
28 and Diabetes Unit, Children's University Hospital Geneva, Geneva, Switzerland; Michael
29 Steigert, Department of Pediatrics, Cantonal Hospital Graubunden, Chur, Switzerland; Gabor
30 Szinnai, Pediatric Endocrinology and Diabetology, University Children's Hospital Basel, Basel,
31 Switzerland; Gerald Theintz, Private Practice for Paediatric Endocrinology, Lausanne,
32 Switzerland.

33

34 **#Correspondence:**

35 Grit Sommer

36 Institute of Social and Preventive Medicine

37 Mittelstrasse 43

38 3012 Bern, Switzerland

39 Phone: +4131 684 33 47

40 Email: gritti.sommer@unibe.ch

41

42 ORCID:

43 Christa Flück 0000-0002-4568-5504

44 Grit Sommer 0000-0002-4205-7932

45

46 *Key words:* DSD; intersex; sex chromosome DSD; 46,XY DSD; 46,XX DSD; CAH; gonadal
47 development

48 *Disclosure:* The authors declare no conflict of interest.

49 **Abstract** (249/250)

50 **Objective:** Reliable data on prevalence of rare differences of sex development (DSD) are
51 lacking. We aimed to estimate population-based prevalence of DSD in Switzerland.

52 **Design:** Retrospective population-based study including individuals with DSD according to
53 Chicago Consensus, born in Switzerland from 2000-2019.

54 **Methods:** Endocrine care centers in all ten Swiss Children's Hospitals and eight private
55 endocrine practices collected DSD data through the I-DSD registry or case report forms. We
56 calculated prevalence for DSD diagnostic groups and analyzed time trends in prevalence.

57 **Results:** Over the 20-year study period, we identified 561 individuals with DSD. Almost half
58 (n=266, 47%) had sex chromosome DSD, 177 (32%) had 46,XY DSD and 118 (21%) had 46,
59 XX DSD. Causes for 46,XY DSD were disturbed androgen synthesis or action (37/177, 21%),
60 atypical gonadal development (28/177, 16%), or other causes (112/177, 63%). Causes for
61 46,XX DSD were androgen excess (99/118, 84%), atypical gonadal development (8/118, 7%),
62 or other causes (11/118, 9%). On average, 28 new cases were born with DSD annually.
63 Prevalence was 17 for sex chromosome DSD, 12 for 46,XY DSD and 8 for 46,XX DSD per
64 100'000 live births and year. One per 7,500 newborn girls had 46,XX congenital adrenal
65 hypoplasia (CAH).

66 **Conclusion:** Prevalence of sex chromosome DSD was lower than expected because of
67 underreporting due to late diagnosis. Prevalence of 46,XX CAH is similar to newborn screening
68 data, suggesting good completeness of cases. For complex DSD cases, we expect complete
69 coverage. This study provides a valuable resource for policymaking and (inter)national research
70 on DSD.

71 INTRODUCTION

72 Differences of sex development (DSD) is an umbrella term that stands for a heterogeneous
73 group of rare conditions that affect human sex development and maturation (1). The term DSD
74 has first been introduced with the Chicago Consensus Statement in 2006 that defined DSD as
75 "congenital conditions in which the development of chromosomal, gonadal, anatomic sex is
76 atypical" (2). Most DSDs are congenital due to their genetic origins. However, many individuals
77 never receive a genetic diagnosis but are diagnosed as DSD based on their phenotype (3).
78 Although this consensus around terminology has been widely accepted by medical
79 professionals, it remains controversial (4), and other terms have been suggested including
80 intersex, variations of sex development or more recently variations of sex characteristics. New
81 knowledge on human sex development and the introduction of a classification based on
82 genetics clarified the perspective on this broad and complex subject. A clear definition allowed
83 researchers and physicians to identify and work together with persons with DSD and improve
84 efforts towards well-integrated, progressive, patient-centered care and research across the DSD
85 spectrum. The I-DSD Registry is an international database for DSD that allows for standardized
86 and pseudonymized data collection (5). It is a valuable tool for researchers and physicians to
87 record and obtain data of individuals with DSD to solve clinical and translational research
88 questions (5, 6). As of June 2023, this registry included data of 7749 individuals with DSD
89 originating from 135 centers of 45 countries world-wide (7). It has formed the basis of over 65
90 research projects addressing various topics of DSD such as mechanisms of disease of specific
91 subtypes of DSD, genetic and diagnostic approaches, treatment options, long-term outcomes,
92 quality of care and psychosocial topics.

93 Recent developments have shifted perceptions and approaches toward DSD, yet many open
94 research questions remain to improve care for individuals with DSD (1, 8, 9, 10). Provision of
95 optimal healthcare for individuals with DSD and perception by policymakers, ethical and legal
96 bodies as well as society require a clear understanding of the occurrence of these conditions.

97 However, the accurate incidence and prevalence of DSD are still unknown (11). One exception
98 are studies reporting incidences of congenital adrenal hyperplasia (CAH), because CAH is
99 included in national neonatal screening programs (12). Only few studies estimated incidence or
100 prevalence for other types of DSD, but these studies were either old, dating from 1955 to 2000
101 (13), or covered only single centers or regions and thus yielded variable results (14) (15, 16, 17,
102 18, 19, 20, 21, 22, 23). To date, no country has a nation-wide registration system for DSD.
103 Our study is the first to assess prevalence of DSD in a population-based cohort study. We
104 aimed to calculate prevalence and trends in prevalence of DSD diagnostic groups according to
105 the Chicago Consensus Classification during the 20-year period from 2000-2019 in Switzerland.

106

107 **MATERIAL AND METHODS**

108 **Ethics, Study Design and Participants**

109 For this population-based retrospective observational study cohort, we retrospectively identified
110 patients with DSD in 19 different Swiss centers of pediatric endocrinology.

111 We included all individuals with DSD as defined by the Chicago Consensus Classification (2),
112 who were born in Switzerland between January 1, 2000 and December 31, 2019. Individuals
113 with DSD were mainly followed by a specialized interdisciplinary team (4) at outpatient clinics of
114 pediatric hospitals under the lead of a pediatric endocrinologist. We approached all 11
115 departments of pediatric endocrinology in Swiss Children's hospitals to collaborate for data
116 collection, and 10 out of 11 participated covering the whole of Switzerland except the canton of
117 Ticino. We also asked all Swiss pediatric endocrinologists in private practices to report their
118 patients, and 8 followed our call.

119 The Ethics Committee of the Canton of Bern granted ethical approval to the Swiss DSD Cohort
120 Study under BASEC ID 2016-01210. With ethical approval, we were able to collect a core data
121 set without informed consent of participants.

122

123 **Data Collection**

124 Participating centers identified eligible patients through patient lists of treating physicians and
125 searches in their administrative clinical databases or hospital coding systems. Physicians
126 extracted data from medical records and filled them into the basic registration module of the I-
127 DSD Registry (<https://sdmregistries.org/>). Centers without access to the registry used a case
128 report form identical to the variables in the I-DSD Registry. Extracted data included treatment
129 center, year of birth, assigned sex at birth, country of birth, karyotype, details of DSD condition
130 including genetic analyses and current gender. We coded each individual according to the
131 diagnostic categories suggested from the Chicago Consensus Classification (2) into three DSD
132 main groups (sex chromosome DSD, 46,XY DSD, 46,XX DSD) and diagnostic subgroups (sex
133 chromosome DSD: Klinefelter syndrome and variant, Turner syndrome and variants,
134 45,X/46,XY and variants, other; 46,XY DSD: disorders of gonadal development, disorders in
135 androgen synthesis or action, other; 46,XY DSD: disorders of gonadal development, androgen
136 excess, other). We clarified missing or inconclusive data with the collaborating physicians.
137 Population-based data on live births came from the Swiss Federal Office of Statistics (SFSO).
138 Numbers of cases of CAH identified by newborn screening came from the Swiss Neonatal
139 Screening laboratory (<https://www.neoscreening.ch/de/>).

140 To ensure that our cohort did not include duplicate entries of the same individuals with DSD, an
141 independent institution performed record linkage based on first and last name and date of birth.

142

143 **Data Analysis and Statistics**

144 We calculated prevalence based on the day the individuals were born, assuming that any DSD
145 regardless of the timing of clinical presentation, is already present at birth, similarly to a Danish
146 study on CAH (24). We calculated prevalence based on population data from the Swiss Federal
147 Statistical Office (SFSO). We calculated the average number of cases born with DSD per year
148 for main DSD categories and specific DSD subgroups during the entire observation period from

149 2000-2019 and for four 5-year intervals (2000-2004, 2005-2009, 2010-2014, 2015-2019). We
150 calculated prevalence of DSD expressed per 100'000 liveborn individuals per year. Depending
151 on the diagnosis, we calculated prevalence based on all newborns, or only newborn boys or
152 newborn girls. For all DSDs combined, for the main DSD categories (sex chromosome DSD,
153 46,XY DSD, 46,XX DSD), and for two sex chromosome DSD subgroups (45,X/46,XY and
154 variants, other sex chromosome DSD) we used the number of all newborns. For Klinefelter
155 syndrome and variants and the 46,XY DSD subgroups (disorders of gonadal development,
156 disorders in androgen synthesis or action, other 46,XY DSD) we used newborn boys. For
157 Turner syndrome and variants and the 46,XX DSD subgroups (disorders of gonadal
158 development, androgen excess, other 46,XX DSD) we used newborn girls. We calculated
159 confidence intervals for prevalence using the Poisson distribution (25). We used Stata, Version
160 16.1 for data preparation and descriptive statistics, and R statistic management, R Version 4.2.2
161 for prevalence calculations.

162 To examine trends in prevalence expressed as annual percentage changes (APC), we used
163 JoinPoint, Version 4.0.2.2. JoinPoint is a statistical package originally developed by the US
164 National Cancer Institute to describe trends in cancer incidence and mortality (26). JoinPoint
165 fitted regression lines through the selected data, with the natural logarithm of proportion
166 (prevalence) as dependent variable and calendar year (2000-2019) as independent variable.
167 We allowed for a maximum number of 0 joinpoints to capture overarching trends within the data.

168

169 **RESULTS**

170 A total of 685 individuals with DSD born between 2000 and 2019 were treated in the 10
171 pediatric hospitals including all University Children's Hospitals in Switzerland and the 8 private
172 pediatric practices. We excluded duplicate individuals (n=56) and individuals born outside of
173 Switzerland or in the canton Ticino (n=66), leading to a final cohort of 561 individuals with DSD
174 **(Figure 1)**.

175

176 We classified our cohort of 561 individuals into the three main DSD categories according to the
177 Chicago Consensus Classification (2). A total of 266 (47%) individuals had sex chromosome
178 DSD, 177 (32%) 46,XY DSD and 118 (21%) 46,XX DSD. **Table 1** gives an overview of the
179 specific diagnoses comprised within these three main DSD categories.

180

181 *Prevalence of DSD in Switzerland*

182 Throughout the entire 20-year study period spanning from 2000 to 2019, an annual average of
183 76'719 children were born in all Swiss cantons excluding Ticino. During the same period, we
184 identified an average number of 28 individuals with DSD born per year (**Table 2**), resulting in an
185 overall prevalence of 36.6 (95%CI 33.6; 39.7) per 100'000 newborns per year for all DSD
186 diagnoses (**Table 2**).

187

188 When we stratified our study period into 5-year intervals, annual DSD prevalence per 100'000
189 newborns was highest with 44.3 (95%CI 31.7; 51.7) between 2005-2009, and lowest with 28.2
190 (95%CI 23.4; 33.7) in the most recent interval between 2015-2019 (Figure 2A and Supplemental
191 Table 1). Sex chromosome DSD accounted for the largest proportion of cases among all DSD
192 main groups between 2000-2014. Only between 2015-2019, the 46,XY DSD proportion was
193 larger. Throughout all time intervals, the 46,XX DSD group accounted for the smallest
194 proportion of cases.

195 Sex chromosome DSD prevalence was highest with 24.0 (95%CI 19.2; 29.7) per 100'000
196 newborns per year between 2000-2004 (Figure 2B and Supplemental Table 1). Turner
197 syndrome and variants accounted for the largest proportion of sex chromosome DSD
198 (prevalence 20.0 per 100'000 newborn girls, 95%CI 16.9;23.5), followed by Klinefelter syndrome
199 and variants (prevalence 9.4 per 100'000 newborn boys, 95%CI 7.4-11.8). Other types of sex
200 chromosome DSD were rare (prevalence 0.5-1.7 per 100'000 newborns). Prevalence of sex

201 chromosome DSD decreased from 2000-2019 with an APC of -6.3 (95%CI -8.4; -4.1) which was
202 mainly driven by the Klinefelter syndrome (APC -8.2, 95%CI 11.4; -4.8) and Turner syndrome
203 group (APC -5.2, 95%CI -7.8; -2.5) (Figures 2B and 3B).

204

205 Prevalence of 46,XY DSD was 11.5 (95%CI 9.9; 13.4) per 100'000 newborns for the entire
206 study period and remained stable over time (APC 1.8, 95%CI -0.5; 4.1) (Table 2, Figure 3C),
207 with a slight trend towards an increasing prevalence after 2014 (Figure 2C). Other 46,XY DSD
208 (prevalence 14.2 per 100'000 newborn boys, 95%CI 11.7; 17.1) was highest among the group
209 of 46,XY DSD, followed by disorders in androgen synthesis or action (prevalence 4.7 per
210 100'000 newborn boys, 95%CI 3.3; 6.5) and disorders of gonadal development (prevalence 3.5
211 per 100'000 newborn boys, 95%CI 2.4; 5.1) (Table 2). While prevalence of other 46,XY DSD
212 increased over time (APC 4.5, 95%CI 1.0-8.1), prevalence of disorders of gonadal development
213 or disorders in androgen synthesis or action remained stable (Figure 3C).

214

215 Prevalence of 46,XX DSD was 7.7 (95%CI 6.4; 9.2) per 100'000 newborns (Table 2, Figures 2D
216 and 3D), and remained stable over time (APC -2.3, 95%CI -5.9; 1.4) (Table 2, Figure 3D).
217 Among 46,XX DSD, the androgen excess group had the highest prevalence with 13.3 (95%CI
218 10.8; 16.2) per 100'000 newborn girls with stable prevalence over the study period. Other types
219 of 46, XX DSD were rare (prevalence 1.1-1.5 per 100'000 newborn girls).

220

221 *Sex registration at birth*

222 In Switzerland sex registration at birth is mandatory and only the traditional categories of either
223 male or female are officially available. We did not observe a difference in ratio of sex registration
224 over the study period (Table 1). In our cohort of 561 individuals, 301 (54%) were registered with
225 female sex at birth and 242 (43%) with male sex at birth. For 18 individuals, physicians reported
226 that sex directly at birth was not assigned (3%; n=14 46,XY and n=4 46,XX), and data on official

227 sex registration at birth was not available to us. All individuals with sex chromosome DSD were
228 registered with a female or male sex at birth. Discordance between karyotype and sex
229 registration at birth was found in 28/177 individuals with 46,XY DSD (16%) and in 12/118
230 individuals with 46,XX DSD (10%). A difference between registered sex at birth and gender at
231 last follow-up was reported in 5 individuals originally registered female at birth (1%) and in 7
232 individuals originally registered male at birth (1%) with one individual identifying as both male
233 and female.

234

235 *Where are individuals with DSD cared for?*

236 We found that most children and adolescents with DSD in Switzerland (452/561, 80%) were
237 seen by pediatric endocrinologists working in hospitals with a interdisciplinary DSD team (Figure
238 4). Pediatric endocrinologists in private practice cared predominantly for children and
239 adolescents with Turner syndrome, Klinefelter syndrome, or 46,XX androgen excess.

240

241 **DISCUSSION**

242 We report prevalence for different DSD diagnoses according to the Chicago Consensus
243 Classification in a population-based cohort between 2000-2019 in Switzerland. Prevalence of
244 DSD treated by pediatric endocrinologist was 37 per 100'000 (1:2'735) newborns including sex
245 chromosome, 46,XY and 46,XX DSD. Overall, DSD prevalence decreased from 2000-2019,
246 which was driven by a strong decrease in prevalence of sex chromosome DSD. Prevalence of
247 46,XY DSD tended to increase and prevalence of 46,XX DSD to decrease over time.

248

249 Most studies on epidemiology of DSD come from single centers in different countries. These
250 studies mostly describe prevalence of DSD (15, 18, 20, 21, 27) or atypical genitalia (16, 19, 22),
251 and only some used the Chicago Consensus Classification. The reported prevalence at birth
252 ranges from 1:357 when including any kind of atypical genitalia (27) to 1:6'347 when using DSD

253 diagnoses according to the Chicago Consensus Classification (21). The two existing multicenter
254 studies from the US (17) and Scotland (23) reported numbers of children with either atypical
255 genitalia or DSD at birth. The Scottish study registered atypical genitalia in Scotland
256 prospectively between 2013-2019. They found that in 1 of 1'881 newborns, the treating
257 physicians suspected a DSD and 1 of 3'318 newborns required DSD specialist consultation
258 (23).

259 The US study by Finlayson et al (17) compared relative prevalence of DSD diagnoses within a
260 cohort of 99 infants with atypical genitalia to other cohorts and found large differences in relative
261 prevalence of sex chromosome, 46,XY and 46,XX DSD between cohorts. Several factors may
262 contribute to this broad variability, including definition of diagnosis (e.g. inclusion/exclusion of
263 cases without atypical genitalia), differences in study population (e.g. ethnicity, consanguinity),
264 sampling (single center versus multicenter), study design (e.g. prospective, cross-sectional),
265 age of study participants (e.g. newborns, children, all ages). Thus population-based data to
266 obtain representative estimates of prevalence for different DSD diagnoses is crucial.

267

268 *Sex chromosome DSD*

269 We calculated prevalence of DSD based on live birth rates in Switzerland. Our overall
270 prevalences are lower than published data for sex chromosome DSD (28, 29). Turner syndrome
271 occurs in 25-50 individuals per 100'000 females (28, 30). We found a prevalence of 24-29 per
272 100'000 newborn girls for Turner syndrome and variants during 2000-2009, which decreased to
273 9 per 100'000 during 2015-2019. This decrease in prevalence over time is due to the fact that
274 less than one third of individuals with Turner syndrome are diagnosed in childhood or
275 adolescence (28, 30). The reported prevalence for Klinefelter syndrome varies from 40-250 per
276 100'000 males with the main proportion only diagnosed in adulthood (31, 32). For Klinefelter
277 and variants we found a prevalence of 18 per 100'000 newborn boys during 2000-2004 that
278 decreased to 5 per 100'000 during 2015-2009. Our cohort included individuals with DSD who

279 were born from 2000-2019, thus a large proportion of individuals were too young to have
280 received a Turner syndrome or Klinefelter syndrome diagnosis. Cohort studies with systematic
281 screening or longer observation periods are needed to capture real prevalence estimates for
282 individuals with Turner and Klinefelter syndrome. Some individuals with Turner or Klinefelter
283 syndrome may not have required pediatric endocrine care and thus were missed by our cohort
284 study.

285

286 *Non-chromosomal DSD*

287 We assume almost complete coverage of rare and complex subgroups of non-chromosomal
288 DSD with atypical genitalia. These individuals are often diagnosed at birth and require extensive
289 diagnostic assessments which leads to treatment by specialized DSD teams. Specialized DSD
290 physicians reported all their DSD cases to our study cohort, reducing the likelihood of missing
291 eligible individuals. Comparable prevalence data is scarce for individuals with complex forms of
292 DSD.

293

294 46,XY DSD comprise disorders of gonadal development, disorders in androgen synthesis or
295 action, and other forms. A Swedish study (33) found a prevalence of 6.4 per 100'000 live born
296 females for individuals with a 46,XY karyotype and a female phenotype. These figures are hard
297 to compare to our results, because we calculated prevalence based on newborn boys and did
298 not include data on phenotype. We observed a prevalence of 3.5 per 100'000 newborn boys for
299 individuals with disorders of gonadal development and of 4.7 for individuals with androgen
300 synthesis or action. The largest group among the 46,XY DSD was the heterogeneous group of
301 other 46,XY DSD including complex genital and cloacal anomalies. Often individuals of this
302 group are not classified as DSD in hospital administration coding systems, as they have their
303 first presentation in departments other than endocrinology (e.g. urology). Only a fraction is
304 referred to specialized DSD teams for interdisciplinary care and genetic work-up. Genetic work-

305 up does not yield a genetic diagnosis relating to a DSD in >50% of individuals (34). In a US
306 single center study among 131 boys with proximal hypospadias, only 60 (46%) received
307 endocrine and genetic testing and 9 (7%) received a DSD diagnosis (35). In a Chinese single
308 center study in 165 individuals with proximal hypospadias, only 14 (8%) obtained a DSD
309 diagnosis (36). Depending on which forms of hypospadias might qualify as DSD, we assume
310 that we have largely underestimated the prevalence of the subgroup of other 46,XY DSD in our
311 study. Interestingly, we observed the highest prevalence in the most recent study period from
312 2015-2019. Increased awareness of DSD among different specialties may have led to more
313 referrals to pediatric endocrinologists in more recent years, particularly after the Chicago
314 Consensus Statement. This group may also include individuals who have not yet received a
315 genetic DSD diagnosis that would allow categorization into the more specific DSD
316 subcategories.

317
318 46,XX DSD comprise disorders of gonadal development, androgen excess and other forms.
319 Most studies describe prevalence for individuals with androgen excess, mostly for CAH. Only
320 one nation-wide cohort study from Sweden reported data on other forms of 46,XX DSD (33).
321 They report a prevalence of 3.5-4.7 per 100'000 newborn males for individuals with a 46,XX
322 karyotype and a male phenotype who mainly presented for fertility concerns and were
323 diagnosed with DSD. Among their study cohort of 44 individuals, 33 had disorders of gonadal
324 development and 3 had CAH. Comparison to our data is difficult, because categorization of
325 46,XX DSD diagnoses differed. In our study, we calculated prevalence for 46,XX DSD based on
326 newborn girls while they used newborn boys, and we did not collect data on phenotype.
327 Because our cohort was relatively young, we may have missed individuals with 46,XX DSD who
328 only come to medical attention later in life due to fertility concerns, leading to an
329 underestimation of the prevalence in this DSD group. We also assume underreporting of 46,XX
330 disorders of gonadal development and other 46,XX DSD for the earliest interval from 2000-2004

331 due to the retrospective study design and lack of consensus on diagnostic nomenclature.
332 Several countries, including Switzerland, published CAH prevalence data from their national
333 neonatal screening programs. Our prevalence estimates are hard to compare to data from the
334 Swiss Newborn Screening (<https://www.neoscreening.ch/de>), because they do not distinguish
335 between girls and boys and they only capture individuals with classic CAH. Our cohort included
336 individuals with non-classic CAH. Prevalence of all subtypes of CAH in Danish females was
337 15.1 per 100'000 newborn girls (24), which was comparable to our study with a prevalence of
338 13.3 per 100'000 newborn girls for 46,XX androgen excess.

339
340 The limitations of available data illustrate the need for national or international registries for rare
341 DSD covering the entire population to enable incidence and prevalence estimates based on the
342 population at risk. Real world numbers are important for discussing controversial topics and
343 receiving the necessary attention and resources from the community to obtain the best possible
344 support for individuals with DSD (8, 23). This concerns political, legal and medical affairs as well
345 as research activities and has been recognized by official bodies in several countries worldwide.
346 The Swiss National Advisory Commission on Biomedical Ethics (37) and the Swiss Academy of
347 Medical Sciences have published recommendations in 2012 and 2016 which include the
348 establishment of population-based registration of DSD. According to international
349 recommendations, individuals with DSD should be cared for by interdisciplinary DSD teams at
350 qualified centers (1, 4, 8, 10, 38, 39, 40, 41). In Switzerland, most persons with DSD born
351 between 2000 and 2019 and followed by a pediatric endocrinologist are cared for in a hospital
352 setting where interdisciplinary DSD teams are established or with a connection to a DSD team.

353
354 Sex registration at birth, sex reassignment and gender in later life are topics which are often
355 discussed controversially by policy makers, medical professionals, patient representatives and
356 human rights activists because many questions are unsolved. One of the most controversially

357 discussed question is whether medical treatments should be offered to children with atypical
358 genitalia who cannot consent or whether it should be banned by a legal embargo (4, 9).
359 Accurate estimations regarding the number of affected individuals and families, supported by
360 data are lacking, but would help in the discourse. Our study showed that Swiss DSD teams treat
361 only few individuals with rare forms of DSD for which state-of-the-art workup does not reveal a
362 clear diagnosis and treatment plan (1, 10).

363 In a multicenter study from Scotland including individuals with atypical genitalia at birth, sex
364 registration was only delayed in 1 of 11'097 newborns who had atypical genitalia at birth
365 suggesting a complex form of DSD requiring extensive diagnostic procedures. In all individuals
366 sex was registered within the first 2 weeks of life, and in only one individual, sex was reassigned
367 in the first 3 months of life (23). In our 20-year study period, only 13/543 individuals (2.4 %) had
368 a gender at last follow-up that differed to the registered sex at birth. This may indicate that sex
369 registration at birth is mostly fitting. However, data on sex registration was not available in 18
370 individuals (3.2 %) and we did not record age at last follow up. In addition, our study cohort was
371 young and gender incongruence might manifest only later in life. Thus, we may have slightly
372 underestimated the frequency of gender reassignment in DSD.

373

374 Only population-based data collections with complete prospective and standardized follow-up
375 can yield reliable estimates on DSD prevalence, gender reassignment, and other topics such as
376 treatment satisfaction. To solve open questions on frequencies of hormonal and surgical
377 treatments in individuals with DSD and whether these treatments align with international
378 recommendations, data registries need to be tailored and standardized for different DSD
379 diagnoses. The I-DSD Registry is a rare disease registry which allowed to answer many open
380 questions in the past (5) and proved to be a valuable tool for our study. It offers additional value
381 for physicians and researchers to join international studies on specific diagnosis groups.
382 Particularly in the field of rare diseases, international networking is very important.

383 This is the first population-based study reporting on overall DSD prevalence and prevalence of
384 subcategories as defined by the Chicago Consensus Classification. Our study, however, is
385 limited by underestimation of prevalence for individuals with DSD. Our time interval of data
386 collection was relatively short and very recent (from 2000-2019), leading to a young study
387 population at time of data collection. Thus, our study did not capture individuals with DSD who
388 have not yet received a diagnosis. Identification of individuals with DSD was retrospective, thus
389 we may have missed patients which were not correctly coded as DSD in the administrative
390 clinical databases or hospital coding systems. Our data collection covered the whole of
391 Switzerland except for the canton of Ticino. Ticino is a geographically distinct region in the
392 South of Switzerland, and the only canton where Italian is the official language. It is thus unlikely
393 that individuals with DSD born and living in Ticino are treated in other cantons. As the Chicago
394 Consensus Classification was published and implemented in 2006, and the structure of the I-
395 DSD Registry changed during our study period, classification of DSD might have differed over
396 time. To avoid misclassification, a designated study team coded all DSD cases into categories
397 according to the Chicago Consensus Classification based on extracted data. We could not
398 calculate incidence of DSD, because information on year of diagnosis was missing. We also
399 could not calculate the external genitalia score (EGS) (42) or the external masculinization score
400 (EMS) (43), because the core data set used in this study did not include phenotype information.
401 However, the scope of our study focused on prevalence of DSD according to Chicago
402 Consensus Classification, and we did not require phenotype information for coding.

403

404 In summary, we found that individuals with complex forms of DSD were rare and received
405 treatment from interdisciplinary specialized DSD teams. Our data, similar to other studies,
406 underestimated prevalence. Systematic prospective data collection is needed to provide robust
407 estimates on DSD occurrence. Standard guidelines for analyzing prevalence of DSD are lacking
408 to enable comparison of countries and studies. Such guidelines should include standards on

409 classification of diagnostic groups and a definition of the population at risk for each DSD
410 diagnostic subgroup.

411

412 **Funding**

413 This work was supported by the Swiss Society of Endocrinology and Diabetology (SGED), by
414 the Boveri Foundation Zürich and by the “Stiftung Kinderinsel”.

415

416 **Acknowledgements**

417 We thank the Swiss DSD Cohort Study Group for their support. Members of this groups who
418 helped in the collection of data are (in alphabetical order): Christine Aebi-Ochsner, Private
419 Practice for Paediatric Endocrinology, Biel Switzerland; Kanetee Busiah, Department of
420 Pediatric Endocrinology and Diabetology, CHUV, University Children's Hospital, Lausanne,
421 Switzerland; Mirjam Dirlwanger, Pediatric Endocrine and Diabetes Unit, Children's University
422 Hospital Geneva, Geneva, Switzerland; Sylvia Gschwend, Private Practice for Paediatric
423 Endocrinology, Zug, Switzerland; Melanie Hess, Pediatric Endocrinology and Diabetology,
424 University Children's Hospital Basel, Basel, Switzerland; Beatrice Kuhlmann, Pediatric
425 Endocrinology, Cantonal Hospital Aarau, Aarau, Switzerland and Private Practice for Paediatric
426 Endocrinology, Basel, Switzerland; Dagmar l'Allemand, Department of Endocrinology,
427 Children's Hospital of Eastern Switzerland, St. Gallen, Switzerland; Mariarosaria Lang,
428 Paediatric Endocrinology and Diabetology, University Children's Hospital Zurich, Zurich,
429 Switzerland; Kees Noordam, Centre for Paediatric Endocrinology Zurich (PEZZ), Zurich,
430 Switzerland; Franziska Phan-Hug, Department of Pediatrics, Hospital Morges, Morges and
431 Department of Pediatrics, Hospital Wallis, Sion, Switzerland; Ursina Probst, Department of
432 Pediatrics, Cantonal Hospital Winterthur, Winterthur, Switzerland; Maristella Santi, Department
433 of Pediatrics, Cantonal Hospital Lucerne, Lucerne, Switzerland; Silvia Schmid, Private Practice
434 for Paediatric Endocrinology, Dubendorf, Switzerland; Valérie Schwitzgebel, Pediatric Endocrine

435 and Diabetes Unit, Children's University Hospital Geneva, Geneva, Switzerland; Michael
436 Steigert, Department of Pediatrics, Cantonal Hospital Graubunden, Chur, Switzerland; Gabor
437 Szinnai, Pediatric Endocrinology and Diabetology, University Children's Hospital Basel, Basel,
438 Switzerland; Gerald Theintz, Private Practice for Paediatric Endocrinology, Lausanne,
439 Switzerland.

440

441 **Data Availability Statement**

442 Data of this study are registered in the I-DSD Registry and can be accessed upon request. I-
443 DSD governance and rules apply, see <https://sdmregistries.org/>.

444

445 **Tables**

446 **Table 1:** Numbers and proportions of DSD cases in Switzerland born between 2000 and 2019,
447 by sex at birth.

448 **Table 2.** Prevalence, average number of cases per year of children identified with DSD in
449 Switzerland, born between 2000-2019, by diagnostic group.

450

451 **Figure Legends**

452 **Figure 1:** Patient recruitment and exclusion flow chart.

453 **Figure 2:** Comparison of prevalence of identified DSDs in Switzerland between 2000-2004,
454 2005-2009, 2010-2014 and 2015-2019, by DSD diagnostic group, according to the Chicago
455 consensus classification of DSD. Error bars indicate 95% confidence intervals. Abbreviations:
456 DSD, Differences of Sex Development

457 **Figure 3:** Trends in prevalence of identified DSDs in Switzerland between 2000-2019, by DSD
458 diagnostic group according to the Chicago consensus classification of DSD. Abbreviations:
459 DSD, Differences of Sex Development

460 **Figure 4:** Number of DSD diagnoses according to the Chicago consensus classification by type
461 of treatment center, identified in Switzerland between 2000-2019.

462 Abbreviations: DSD, Differences of Sex Development

463

464 **Supplemental material**

465 **Supplemental Table 1:** Prevalence, average number of cases per year and sex ratio of
466 children identified with DSD in Switzerland, born between 2000-2019, by diagnostic group and
467 5-year periods.

468

469

470

471

472 **References**

- 473 1. Cools M, Nordenstrom A, Robeva R, Hall J, Westerveld P, Fluck C, et al. Caring for
474 individuals with a difference of sex development (DSD): a Consensus Statement. *Nat Rev*
475 *Endocrinol.* 2018;14(7):415-29.
- 476 2. Hughes IA, Houk C, Ahmed SF, Lee PA, Lawson Wilkins Pediatric Endocrine
477 Society/European Society for Paediatric Endocrinology Consensus G. Consensus statement on
478 management of intersex disorders. *J Pediatr Urol.* 2006;2(3):148-62.
- 479 3. Fluck CE, Guran T. Ambiguous Genitalia in the Newborn. In: Feingold KR, Anawalt B,
480 Blackman MR, Boyce A, Chrousos G, Corpas E, et al., editors. *Endotext.* South Dartmouth
481 (MA)2000.
- 482 4. Lee PA, Nordenstrom A, Houk CP, Ahmed SF, Auchus R, Baratz A, et al. Global
483 Disorders of Sex Development Update since 2006: Perceptions, Approach and Care. *Horm Res*
484 *Paediatr.* 2016;85(3):158-80.
- 485 5. Lucas-Herald AK, Ali SR, McMillan C, Rodie ME, McMillan M, Bryce J, et al. I-DSD: The
486 First 10 Years. *Horm Res Paediatr.* 2023;96(2):238-46.
- 487 6. Ali SR, Lucas-Herald A, Bryce J, Ahmed SF. The Role of International Databases in
488 Understanding the Aetiology and Consequences of Differences/Disorders of Sex Development.
489 *Int J Mol Sci.* 2019;20(18).
- 490 7. Ahmed SF. The I-DSD/I-CAH/I-TS Network Activity Report 2023 2023 [Available from:
491 chrome-extension://efaidnbmnnnibpcajpcglclefindmkaj/[https://sdmregistries.org/wp-](https://sdmregistries.org/wp-content/uploads/2023/08/I-DSD-Activity-Report-June-2023-v2-27.7.23.pdf)
492 [content/uploads/2023/08/I-DSD-Activity-Report-June-2023-v2-27.7.23.pdf](https://sdmregistries.org/wp-content/uploads/2023/08/I-DSD-Activity-Report-June-2023-v2-27.7.23.pdf).
- 493 8. Hiort O, Cools M, Springer A, McElreavey K, Greenfield A, Wudy SA, et al. Addressing
494 gaps in care of people with conditions affecting sex development and maturation. *Nat Rev*
495 *Endocrinol.* 2019;15(10):615-22.

- 496 9. Cools M, Simmonds M, Elford S, Gorter J, Ahmed SF, D'Alberon F, et al. Response to
497 the Council of Europe Human Rights Commissioner's Issue Paper on Human Rights and
498 Intersex People. *Eur Urol.* 2016;70(3):407-9.
- 499 10. Fluck C, Nordenstrom A, Ahmed SF, Ali SR, Berra M, Hall J, et al. Standardised data
500 collection for clinical follow-up and assessment of outcomes in differences of sex development
501 (DSD): recommendations from the COST action DSDnet. *Eur J Endocrinol.* 2019;181(5):545-64.
- 502 11. Sax L. How common is intersex? a response to Anne Fausto-Sterling. *J Sex Res.*
503 2002;39(3):174-8.
- 504 12. Claahsen-van der Grinten HL, Speiser PW, Ahmed SF, Arlt W, Auchus RJ, Falhammar
505 H, et al. Congenital Adrenal Hyperplasia-Current Insights in Pathophysiology, Diagnostics, and
506 Management. *Endocr Rev.* 2022;43(1):91-159.
- 507 13. Blackless M, Charuvastra A, Derryck A, Fausto-Sterling A, Lauzanne K, Lee E. How
508 sexually dimorphic are we? Review and synthesis. *Am J Hum Biol.* 2000;12(2):151-66.
- 509 14. Conway GS. Differences in Sex Development (DSD) and related conditions:
510 mechanisms, prevalences and changing practice. *Int J Impot Res.* 2023;35(1):46-50.
- 511 15. Ata A, Ozen S, Onay H, Uzun S, Goksen D, Ozkinay F, et al. A large cohort of disorders
512 of sex development and their genetic characteristics: 6 novel mutations in known genes. *Eur J*
513 *Med Genet.* 2021;64(3):104154.
- 514 16. De Paula GB, Barros BA, Carpini S, Tincani BJ, Mazzola TN, Sanches Guaragna M, et
515 al. 408 Cases of Genital Ambiguity Followed by Single Multidisciplinary Team during 23 Years:
516 Etiologic Diagnosis and Sex of Rearing. *Int J Endocrinol.* 2016;2016:4963574.
- 517 17. Finlayson C, Rosoklija I, Aston CE, Austin P, Bakula D, Baskin L, et al. Baseline
518 Characteristics of Infants With Atypical Genital Development: Phenotypes, Diagnoses, and Sex
519 of Rearing. *J Endocr Soc.* 2019;3(1):264-72.
- 520 18. Ganie Y, Aldous C, Balakrishna Y, Wiersma R. Disorders of sex development in children
521 in KwaZulu-Natal Durban South Africa: 20-year experience in a tertiary centre. *J Pediatr*
522 *Endocrinol Metab.* 2017;30(1):11-8.
- 523 19. Heeley JM, Hollander AS, Austin PF, Merritt DF, Wesevich VG, Washington University
524 School of Medicine in St Louis DSDT, et al. Risk association of congenital anomalies in patients
525 with ambiguous genitalia: A 22-year single-center experience. *J Pediatr Urol.* 2018;14(2):153
526 e1- e7.
- 527 20. Juniarto AZ, van der Zwan YG, Santosa A, Ariani MD, Eggers S, Hersmus R, et al.
528 Hormonal evaluation in relation to phenotype and genotype in 286 patients with a disorder of
529 sex development from Indonesia. *Clin Endocrinol (Oxf).* 2016;85(2):247-57.
- 530 21. Man E, Mushtaq I, Barnicoat A, Carmichael P, Hughes CR, Davies K, et al. A Single-
531 Center, Observational Study of 607 Children and Young People Presenting With Differences of
532 Sex Development (DSD). *J Endocr Soc.* 2022;7(1):bvac165.
- 533 22. Manzoor J, Aftab S, Yaqoob M. Ambiguous genitalia: An overview of 7 years experience
534 at the Children's Hospital & Institute of Child Health, Lahore, Pakistan. *Pak J Med Sci.*
535 2019;35(1):151-5.
- 536 23. Rodie ME, Ali SR, Jayasena A, Alenazi NR, McMillan M, Cox K, et al. A Nationwide
537 Study of the Prevalence and Initial Management of Atypical Genitalia in the Newborn in
538 Scotland. *Sex Dev.* 2022;16(1):11-8.
- 539 24. Berglund A, Ornstrup MJ, Lind-Holst M, Duno M, Baekvad-Hansen M, Juul A, et al.
540 Epidemiology and diagnostic trends of congenital adrenal hyperplasia in Denmark: a
541 retrospective, population-based study. *Lancet Reg Health Eur.* 2023;28:100598.
- 542 25. Begaud B, Martin K, Abouelfath A, Tubert-Bitter P, Moore N, Moride Y. An easy to use
543 method to approximate Poisson confidence limits. *Eur J Epidemiol.* 2005;20(3):213-6.
- 544 26. Kim HJ, Chen HS, Byrne J, Wheeler B, Feuer EJ. Twenty years since Joinpoint 1.0: Two
545 major enhancements, their justification, and impact. *Stat Med.* 2022;41(16):3102-30.

- 546 27. Ameyaw E, Asafo-Agyei SB, Hughes IA, Zacharin M, Chanoine JP. Incidence of
547 disorders of sexual development in neonates in Ghana: prospective study. *Arch Dis Child*.
548 2019;104(7):636-8.
- 549 28. Gravholt CH, Andersen NH, Conway GS, Dekkers OM, Geffner ME, Klein KO, et al.
550 Clinical practice guidelines for the care of girls and women with Turner syndrome: proceedings
551 from the 2016 Cincinnati International Turner Syndrome Meeting. *Eur J Endocrinol*.
552 2017;177(3):G1-G70.
- 553 29. Zitzmann M, Aksglaede L, Corona G, Isidori AM, Juul A, T'Sjoen G, et al. European
554 academy of andrology guidelines on Klinefelter Syndrome Endorsing Organization: European
555 Society of Endocrinology. *Andrology*. 2021;9(1):145-67.
- 556 30. Stochholm K, Juul S, Juel K, Naeraa RW, Gravholt CH. Prevalence, incidence,
557 diagnostic delay, and mortality in Turner syndrome. *J Clin Endocrinol Metab*. 2006;91(10):3897-
558 902.
- 559 31. Herlihy AS, Halliday JL, Cock ML, McLachlan RI. The prevalence and diagnosis rates of
560 Klinefelter syndrome: an Australian comparison. *Med J Aust*. 2011;194(1):24-8.
- 561 32. Bojesen A, Juul S, Gravholt CH. Prenatal and postnatal prevalence of Klinefelter
562 syndrome: a national registry study. *J Clin Endocrinol Metab*. 2003;88(2):622-6.
- 563 33. Berglund A, Johannsen TH, Stochholm K, Viuff MH, Fedder J, Main KM, et al. Incidence,
564 Prevalence, Diagnostic Delay, and Clinical Presentation of Female 46,XY Disorders of Sex
565 Development. *J Clin Endocrinol Metab*. 2016;101(12):4532-40.
- 566 34. Audi L, Ahmed SF, Krone N, Cools M, McElreavey K, Holterhus PM, et al. GENETICS IN
567 ENDOCRINOLOGY: Approaches to molecular genetic diagnosis in the management of
568 differences/disorders of sex development (DSD): position paper of EU COST Action BM 1303
569 'DSDnet'. *Eur J Endocrinol*. 2018;179(4):R197-R206.
- 570 35. Johnson EK, Jacobson DL, Finlayson C, Yerkes EB, Goetsch AL, Leeth EA, et al.
571 Proximal Hypospadias-Isolated Genital Condition or Marker of More? *J Urol*. 2020;204(2):345-
572 52.
- 573 36. Wong YS, Tam YH, Pang KKY, Yau HC. Incidence and diagnoses of disorders of sex
574 development in proximal hypospadias. *J Pediatr Surg*. 2018;53(12):2498-501.
- 575 37. Ethics SNAcOB. Variations of sex development. Bern, Switzerland: SAMW; 2012.
- 576 38. Lucas-Herald AK, Rodie ME, Ahmed SF. Update on the management of a newborn with
577 a suspected difference of sex development. *Arch Dis Child*. 2021.
- 578 39. Lucas-Herald AK, Scougall K, Ahmed SF. Delivery of multidisciplinary care in the field of
579 differences and disorders of sex development (DSD). *Expert Rev Endocrinol Metab*.
580 2022;17(3):225-34.
- 581 40. Wisniewski AB, Batista RL, Costa EMF, Finlayson C, Sircili MHP, Denes FT, et al.
582 Management of 46,XY Differences/Disorders of Sex Development (DSD) Throughout Life.
583 *Endocr Rev*. 2019;40(6):1547-72.
- 584 41. Bever YV, Bruggenwirth HT, Wolffenbuttel KP, Dessens AB, Groenenberg IAL, Knapen
585 M, et al. Under-reported aspects of diagnosis and treatment addressed in the Dutch-Flemish
586 guideline for comprehensive diagnostics in disorders/differences of sex development. *J Med
587 Genet*. 2020;57(9):581-9.
- 588 42. van der Straaten S, Springer A, Zecic A, Hebenstreit D, Tonnhofer U, Gawlik A, et al.
589 The External Genitalia Score (EGS): A European Multicenter Validation Study. *J Clin Endocrinol
590 Metab*. 2020;105(3).
- 591 43. Ahmed SF, Khwaja O, Hughes IA. The role of a clinical score in the assessment of
592 ambiguous genitalia. *BJU Int*. 2000;85(1):120-4.

Table 1: Numbers and proportions of DSD cases in Switzerland born between 2000 and 2019, by sex at birth

	Total		Sex at birth					
			Female		Male		Other/ Not assigned	
	N=561		N=301		N=242		N=18	
	n	%	n	%	n	%	n	%
Period of birth								
2000-2004	146	26	83	28	61	25	2	11
2005-2009	160	28	92	31	60	25	8	44
2010-2014	136	24	78	26	54	22	4	22
2015-2019	119	21	48	16	67	28	4	22
Sex chromosome DSD	266	100	171	100	95	100	0	n/a
Klinefelter syndrome and variants	74	28	0	0	74	78	0	n/a
Turner syndrome and variants	149	56	148	87	1	1	0	n/a
45,X/46,XY and variants	33	12	22	13	11	12	0	n/a
Other	10	4	1	1	9	9	0	n/a
46,XY DSD	177	100	28	100	135	100	14	100
<i>Disorders of gonadal development</i>	28	16	9	32	17	13	2	14
Complete or partial gonadal dysgenesis	16		8		7		1	
Gonadal regression	9		0		9		0	
Ovotesticular DSD	3		1		1		1	
<i>Disorders in androgen synthesis or action</i>	37	21	18	64	18	13	1	7
Disorders of androgen synthesis	12		2		9		1	
Disorders of androgen action	19		16		3		0	
Disorders of AMH or AMH receptor	6		0		6		0	
<i>Other</i>	112	63	1	4	100	74	11	79
Complex genital anomalies	106		1		95		10	
Cloacal anomalies	2		0		1		1	
Other	4		0		4		0	
46,XX DSD	118	100	102	100	12	100	4	100
<i>Disorders of gonadal development</i>	8	7	2	2	6	50	0	0
Gonadal dysgenesis	2		2		0		0	
Ovotesticular DSD	2		0		2		0	
Testicular DSD	4		0		4		0	
<i>Androgen excess</i>	99	84	89	87	6	50	4	100
Fetal	97		87		6		4	
Fetoplacental	2		2		0		0	
Maternal	0		0		0		0	
<i>Other</i>	11	9	11	11	0	0	0	0
Cloacal anomalies	7		7		0		0	
Other	4		4		0		0	
Gender at last follow-up								
Female	304	54	294	52	5	1	5	1
Male	256	46	6	1	237	42	13	2
Both	1	0.2	1	0.2	0	0	0	0

Abbreviations: AMH, Anti-Mullerian hormone; DSD, differences of sex development; n/a, not applicable.

Table 2

Prevalence, average number of cases per year of individuals identified with DSD in Switzerland, born between 2000-2019, by diagnostic group.

	Average number of cases/year	Prevalence per 100.000 newborns per year (95% CI)	1:N newborns
<i>All DSD diagnoses^a</i>	28.1	36.6 (33.6; 39.7)	2735
<i>DSD diagnostic group</i>			
Sex chromosome DSD ^a	13.3	17.3 (15.3; 19.5)	5768
46,XY DSD ^a	8.9	11.5 (9.9; 13.4)	8669
46,XX DSD ^a	5.9	7.7 (6.4; 9.2)	13003
<i>Sex chromosome DSD</i>			
Klinefelter syndrome and variants ^b	3.7	9.4 (7.4; 11.8)	10660
Turner syndrome and variants ^c	7.5	20.0 (16.9; 23.5)	5004
45,X/46,XY and variants ^a	1.7	2.2 (1.5; 3.0)	46496
Other ^a	0.5	0.7 (0.3; 1.2)	153437
<i>46,XY DSD</i>			
Disorders of gonadal development ^b	1.4	3.5 (2.4; 5.1)	28172
Disorders in androgen synthesis or action ^b	1.9	4.7 (3.3; 6.5)	21319
Other ^b	5.6	14.2 (11.7; 17.1)	7043
<i>46,XX DSD</i>			
Disorders of gonadal development ^c	0.4	1.1 (0.5; 2.1)	93195
Androgen excess ^c	5.0	13.3 (10.8; 16.2)	7531
Other ^c	0.6	1.5 (0.7; 2.6)	67778

Abbreviations: CI, confidence interval; DSD, differences of sex development.

Footnotes:

^aPrevalence calculated based on newborns of both sexes.

^bPrevalence calculated based on newborn boys.

^cPrevalence calculated based on newborn girls.

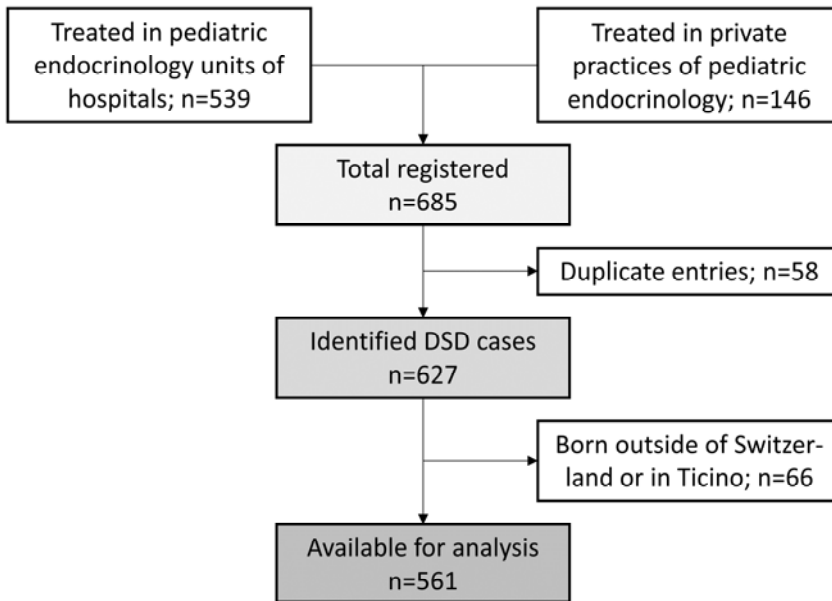
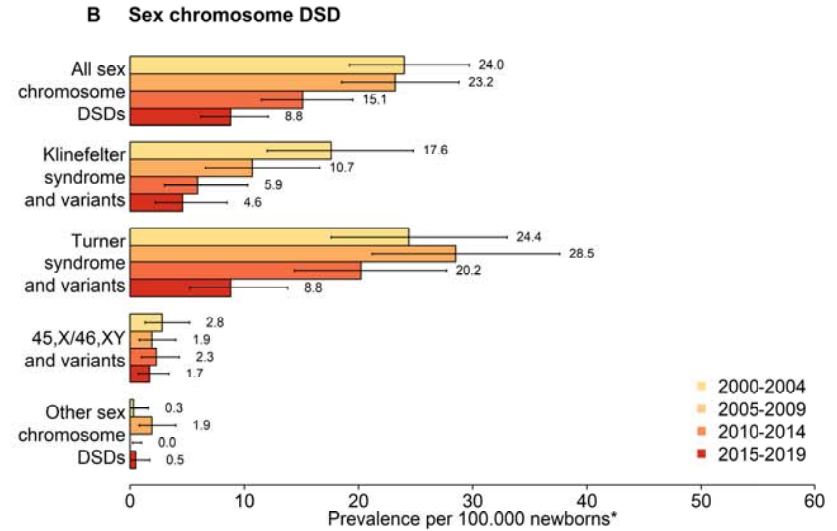
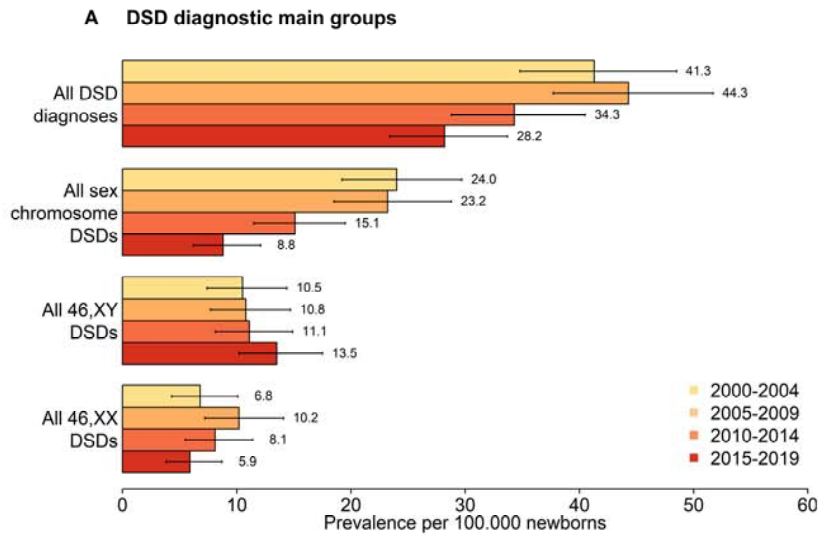


Figure 1: Identification of the Swiss DSD cohort. Study participants were identified through pediatric endocrinology departments in pediatric hospitals and private practices specialized in endocrine care.



*Prevalence calculated per 100.000 newborns of both sexes except for Klinefelter syndrome and variants (per 100.000 newborn boys) and for Turner syndrome and variants (per 100.000 newborn girls).

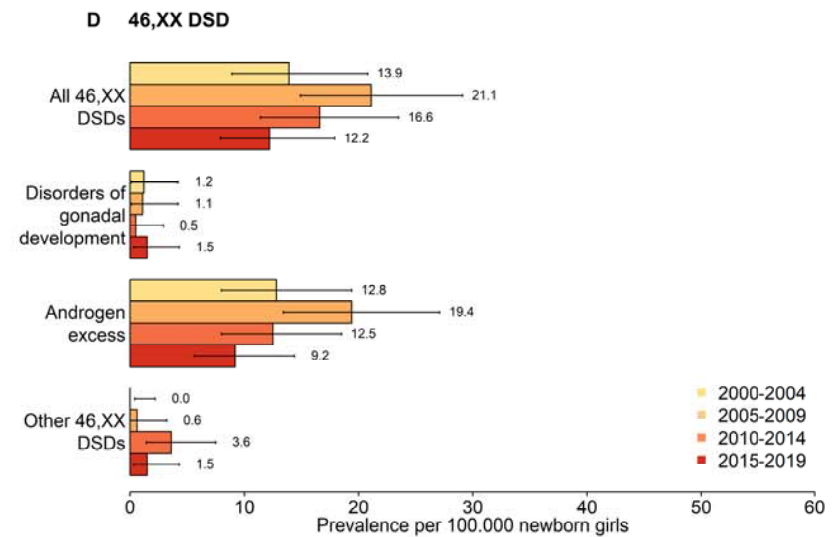
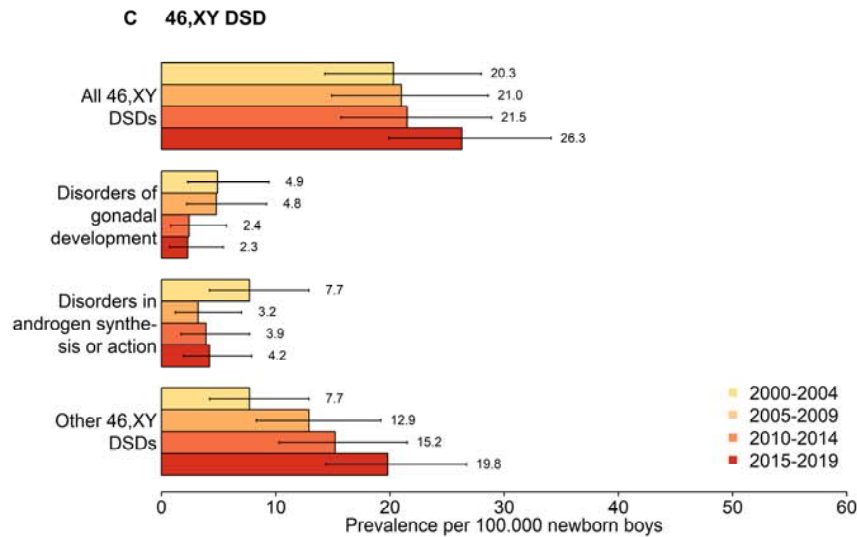


Figure 2: Comparison of prevalence of identified individuals with DSD in Switzerland between 2000-2004, 2005-2009, 2010-2014 and 2015-2019, by DSD diagnostic group, according to the Chicago Consensus Classification. Error bars indicate 95% confidence intervals. Abbreviations: DSD, differences of sex development.

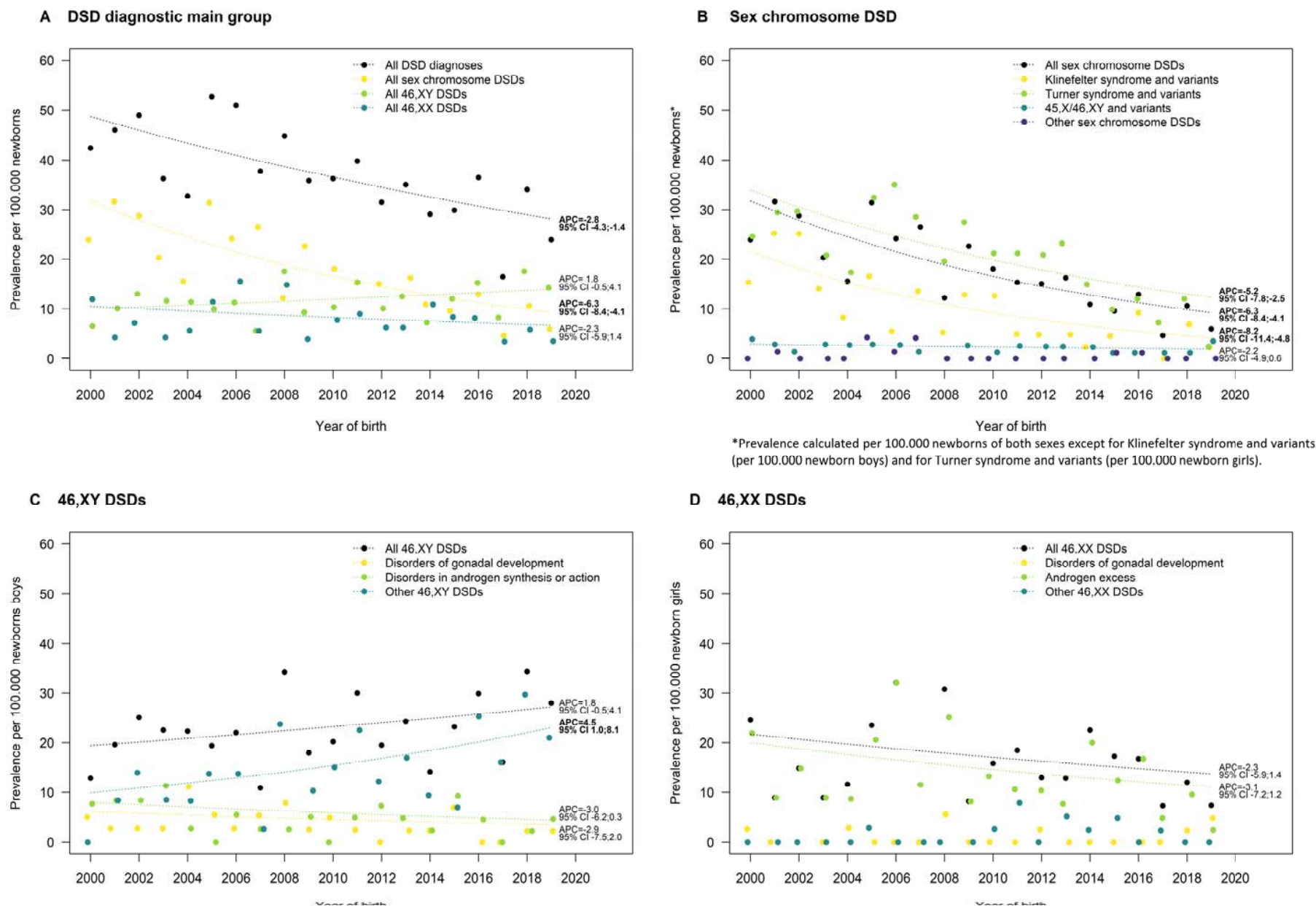


Figure 3: Trends in prevalence of identified DSDs in Switzerland between 2000-2019, by DSD diagnostic group according to the Chicago Consensus Classification. We used JoinPoint regression to analyze the annual percentage change (APC) in prevalence over time. We did not model APC in diagnostic groups where there were no cases in >3 calendar years. Bold letters indicate p-values <0.5. Abbreviations: APC, Annual Percent Change; DSD, differences of sex development.

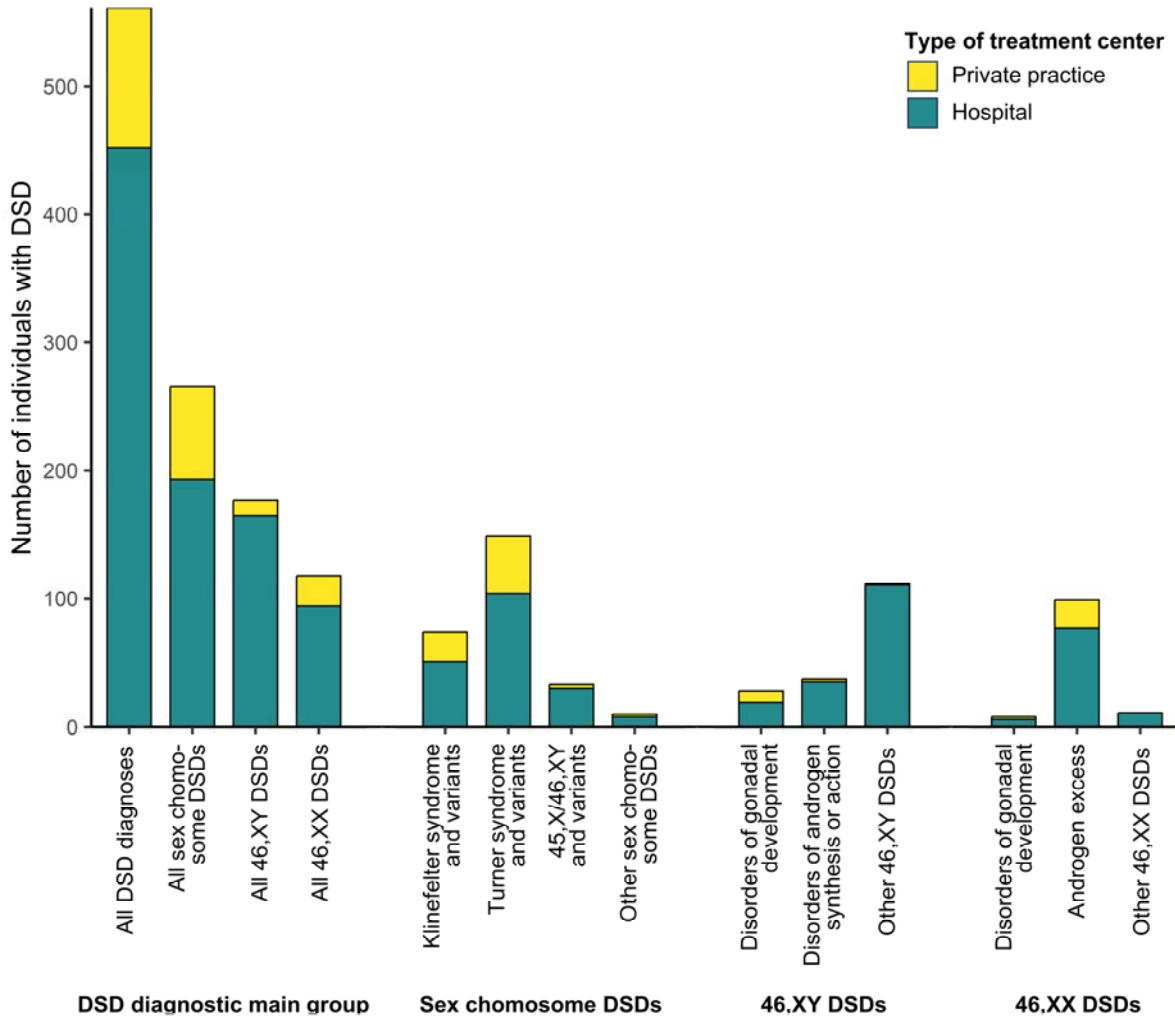


Figure 4: Number of individuals with DSD according to the Chicago Consensus Classification by type of treatment center, identified in Switzerland between 2000-2019. Abbreviations: DSD, differences of sex development.