

Figure S1. Anatomical fiducial registration errors are consistent across individual raters.

(a-b) 3D scatterplots of transformed rater placements of anterior commissure (AC) and posterior commissure (PC) and ground truth placement (black). Transformed AC and PC points are color mapped by rater. (c-d) Anatomical fiducial registration errors (AFREs) obtained across individual raters at AC and PC in all axes. There were no significant differences across AFREs independently obtained by individual raters (Wilcoxon rank sum, $\alpha = 0.05/6$ in each axis).

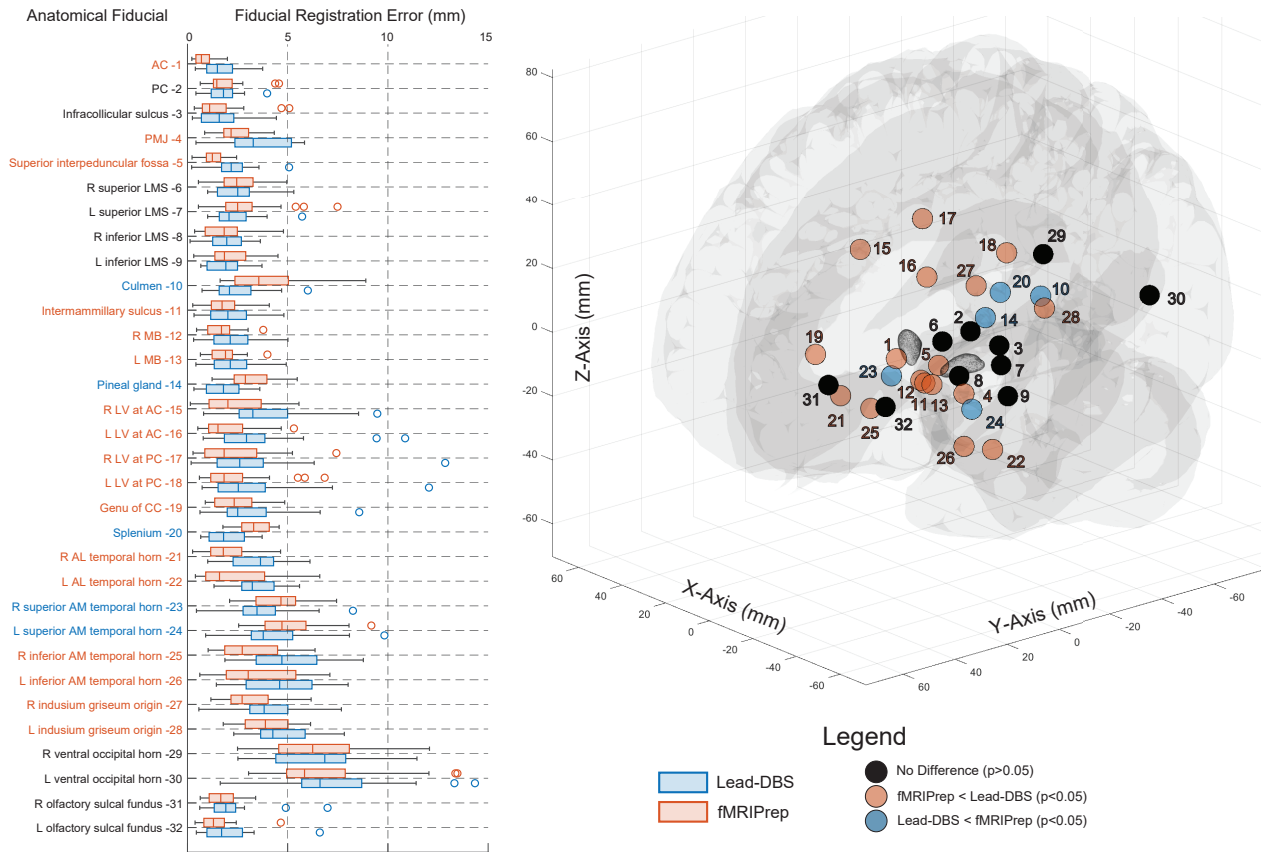


Figure S2. Anatomical fiducial registration errors compared using Lead-DBS and fMRIPrep toolsets. Comparing fiducial registration errors (AFREs) obtained across 32 anatomical fiducials (AFIDs) in the current study using Lead-DBS (v.2.3.2) and in Abbass et al. (2022) using fMRIPrep 1.5.4. Euclidean AFREs obtained by Lead-DBS and fMRIPrep for each AFID are shown using boxplots (left). AFREs are compared using a Wilcoxon signed-rank Test ($n=24$). AFIDs with a p -value < 0.05 are color-coded such that smaller AFREs obtained by Lead-DBS are orange, and smaller AFREs obtained by fMRIPrep are green. Color-mapped AFIDs are plotted in a 3D scatter-plot with an overlying brain mesh and mesh of each subthalamic nucleus (Ewert et al., 2018).

Exploring Electrode Tip Deviation

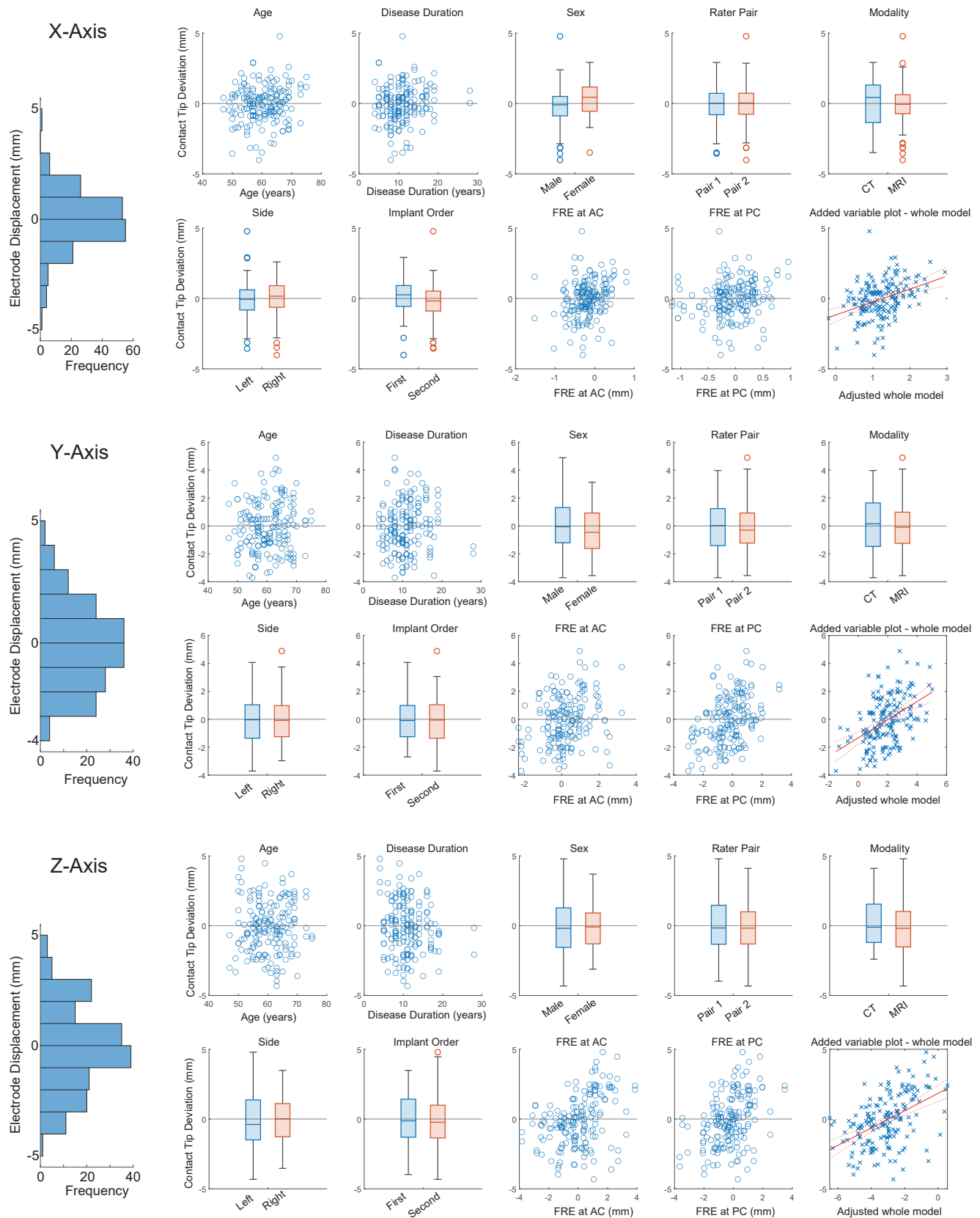


Figure S3. Electrode tip position in template space is not explained by demographic or imaging variables. Explaining electrode tip displacement by demographic variables (age, disease duration, sex), rater pair, modality (post-operative CT or MRI used), electrode side, implantation order (first or second side), and anatomical fiducial registration error (AFRE) at the anterior commissure (AC) and posterior commissure (PC). Electrode tip deviation is shown in a histogram for each axis. Electrode tip deviation is plotted against continuous independent variables using a scatterplot and is represented by boxplots for binary independent variables.