

# 1 Making Biological Ageing Clocks 2 Personal

3 *Murih Pusparum<sup>1,3</sup>, Olivier Thas<sup>3,4,5</sup>, Stephan Beck<sup>2</sup>, Gökhan Ertaylan<sup>1\*\*</sup>, Simone Ecker<sup>2\*\*</sup>*

4 <sup>1</sup>*Unit Health, Flemish Institute for Technological Research (VITO), Antwerp, Belgium*

5 <sup>2</sup>*UCL Cancer Institute, University College London, London, UK*

6 <sup>3</sup>*Data Science Institute, Hasselt University, Hasselt, Belgium*

7 <sup>4</sup>*Department of Applied Mathematics, Computer Science and Statistics, Ghent University, Ghent, Belgium*

8 <sup>5</sup>*National Institute for Applied Statistics Research Australia (NIASRA), University of Wollongong,  
9 Wollongong, NSW, Australia.*

10

11 *\*Corresponding author*

12 *†Equal Contributions*

13

## 14 Summary

### 15 Background

16 Age is the most important risk factor for the majority of human diseases. Addressing the impact of age-  
17 related diseases has become a priority in healthcare practice, leading to the exploration of innovative  
18 approaches, including the development of predictors to estimate biological age (so-called “ageing  
19 clocks”). These predictors offer promising insights into the ageing process and age-related diseases. This  
20 study aims to showcase the significance of ageing clocks within a unique, deeply phenotyped  
21 longitudinal cohort. By utilising omics-based approaches alongside gold-standard clinical risk predictors,  
22 we elucidate the potential of these novel predictors in revolutionising personalised healthcare and  
23 better understanding the ageing process.

### 24 Methods

25 We analysed data from the IAM Frontier longitudinal study that collected extensive data from 30  
26 healthy individuals over the timespan of 13 months: DNA methylation data, clinical biochemistry,  
27 proteomics and metabolomics measurements as well as data from physical health examinations. For  
28 each individual, biological age (BA) and health traits predictions were computed from 29 epigenetic  
29 clocks, 4 clinical-biochemistry clocks, 2 proteomics clocks, and 3 metabolomics clocks.

### 30 Findings

31 Within the BA prediction framework, comprehensive analyses can discover deviations in biological  
32 ageing. Our study shows that the within-person BA predictions at different time points are more similar  
33 to each other than the between-person predictions at the same time point, indicating that the ageing  
34 process is different between individuals but relatively stable within individuals. Individual-based  
35 analyses show interesting findings for three study participants, including observed hematological

36 problems, that further supported and complemented by the current gold standard clinical laboratory  
37 profiles.

### 38 **Interpretation**

39 Our analyses indicate that BA predictions can serve as instruments for explaining many biological  
40 phenomena and should be considered crucial biomarkers that can complement routine medical tests.  
41 With omics becoming routinely measured in regular clinical settings, omics-based BA predictions can be  
42 added to the lab results to give a supplementary outlook assisting decision-making in doctors'  
43 assessments.

### 44 **Funding**

45 -

### 46 **Keywords:**

47 Biological age, ageing clock, epigenetic clock, metabolomics clock, proteomics clock, multi-omics,  
48 personalised health

## 49 Introduction

50 Age is the most important shared risk factor for the majority of human diseases. Hence, there are strong  
51 efforts towards attenuating ageing-related disease risk via lifestyle, pharmacological, and clinical  
52 interventions to slow or reverse ageing. “Chronological age” (CA), defined by the time passed since an  
53 individual’s birth, falls short of reflecting interindividual and environmental differences acting upon a  
54 biological system during this period. A critical prerequisite in the endeavour to improve healthy ageing is  
55 to quantify an individual’s “wellness,” which covers not only the absence of sickness but also their  
56 resilience to future disease, general satisfaction with their health, and having sufficient energy levels for  
57 activities that enrich one’s life. While a variety of signals related to individual health and well-being can  
58 be collected, validating their contribution to clinically relevant outcomes remains an open issue. The  
59 hallmarks of ageing include genomic instability, telomere attrition, epigenetic alterations, loss of  
60 proteostasis, disabled macroautophagy, deregulated nutrient-sensing, mitochondrial dysfunction,  
61 cellular senescence, stem cell exhaustion, altered intercellular communication, chronic inflammation  
62 and dysbiosis<sup>1</sup>. Each hallmark contributes to the ageing process. The major challenge is to dissect the  
63 interconnectedness between these hallmarks and their relative contributions to ageing<sup>1</sup>.

64 To achieve significant progress in the wellness and longevity area to improve human health span, we  
65 need to develop tools and methodologies for standard collection, harmonisation, analysis, integration,  
66 and interpretation of this information at the individual level. A variety of biological age predictors have  
67 been proposed. They share the common approach of using large cross-sectional “healthy” discovery  
68 population cohorts with age as a phenotype to construct a predictive model for an organism’s age and  
69 subsequently validate it in a separate cohort. Based on the type of molecular data employed, these  
70 predictors can be classified into six categories: Telomere length, epigenetic clocks, transcriptomic  
71 predictors, proteomic predictors, metabolomics-based predictors, and composite biomarker predictors.  
72 Among these, epigenetic clocks are considered to be the most accurate in predicting biological age and  
73 other health phenotypes<sup>2</sup>.

74 Telomeres are repetitive DNA sequences capping chromosomes that shorten every time a cell divides;  
75 thus, telomere length (TL) is a conventional marker of biological ageing across various biological  
76 domains.<sup>3</sup> TL has been associated with biological age, wellness, and mortality risk of an individual<sup>4-6</sup>.  
77 Furthermore, TL has been proposed for some specific types of cancer<sup>4</sup> and cardiovascular mortality  
78 predictions.<sup>5,6</sup> However, TL is hard to measure in clinical practice, and recent reports comparing TL with  
79 epigenetic clocks on non-symptomatic (or healthy) individuals found TL to be less informative<sup>2,7-9</sup>.

80 Epigenetic clocks are molecular tools based on 5mC methylation changes to a person’s DNA over time.  
81 These modifications, which can be influenced by various factors, including environmental exposures and  
82 lifestyle choices, can change over time and, therefore, be used to predict a person’s age.

83 The “epigenetic clock” premise is to link developmental and maintenance processes to biological ageing,  
84 giving rise to a unified theory of the life course of an organism<sup>10</sup>. Epigenetic clocks are used in ageing  
85 research to identify potential interventions that could delay or reverse age-related changes and to  
86 understand the biological processes underlying ageing. They are also employed to study the relationship  
87 between epigenetic changes and various age-related diseases and conditions, such as cancer and  
88 cardiovascular disease. Epigenetic clocks are not yet widely used in clinical practice but show promise as  
89 a way to measure biological ageing and identify interventions that may be able to improve health

90 outcomes. There is a rapidly growing number of epigenetic clock estimators built for distinct  
91 purposes<sup>11,12</sup>, and their application potential, together with the other omics clocks, has also been  
92 discussed<sup>13,14</sup>. Proteomics, metabolomics, and multiple clinical biomarker readouts are used to predict  
93 biological age, specific disease risks or phenotypes<sup>2</sup>.

94 Many of those predictors of age and fitness have already been proposed to be used in healthcare  
95 practice, and several companies have started to offer direct-to-consumer products in this context<sup>15</sup>.  
96 Their product implementation in clinical practice requires rigorous validation and simple and clear  
97 recommendations for both the healthcare practitioner and the individual. Hence, despite the large  
98 consensus of their premise, there are significant challenges to overcome to transfer scientific health and  
99 wellness tools into clinical practice<sup>16</sup>.

100 In this study, we aim to demonstrate the value of epigenetic clocks, proteomics, metabolomics, and  
101 multi-biomarker predictors in a unique longitudinal pilot cohort<sup>17</sup> where all required data types (clinical  
102 parameters, epigenomics, proteomics, metabolomics, along with deep phenotyping and metadata) are  
103 available across multiple time points in a 13-month period.

104

## 105 **Methods**

### 106 **Study design and participants**

107 The IAM Frontier study is a unique longitudinal cohort study that ran for 13 months in 30 healthy  
108 individuals, consisting of 15 male and 15 female participants. The 13 months study duration was chosen  
109 to cover the seasonal fluctuations that might occur over a one-year period. The study specifically  
110 targeted the employees of the research organisation VITO within the age range of 45-59. A major reason  
111 for the selection of this group of employees was that as they are part of a research organisation, they  
112 are expected to be more open to research-grade technologies and interventions. The age range was  
113 selected because the highest prevalence of onset of chronic diseases occurs from the age of 45-65<sup>18</sup>.  
114 Individuals were selected based on the following inclusion criteria: not suffering from a chronic disease,  
115 diagnosed and currently followed-up by a medical specialist: asthma, chronic bronchitis, chronic  
116 obstructive pulmonary disease, emphysema, myocardial infarction, coronary heart disease (angina  
117 pectoris), other serious heart diseases, stroke (cerebral haemorrhage, cerebral thrombosis), diabetes,  
118 cancer (malignant tumour, also including leukaemia and lymphoma). At monthly visits, a range of  
119 samples (whole blood, plasma, urine, stool) were collected and sent to accredited laboratories and  
120 comprehensive multi-omics and clinical biochemistry data were assessed. Self-administered  
121 questionnaires on, for example, health conditions and physical activity were also completed by the  
122 participants. In this article, we analysed data from the IAM Frontier study, which included DNA  
123 methylation data, clinical biochemistry, proteomics, metabolomics, and data from physical health  
124 examinations.

125

### 126 **Sample collection**

127 The sampling of the IAM Frontier study took place between March 2019 and March 2020 and included  
128 the collection of human biospecimen and digital data. During the 13 months of the study, the

129 participants donated blood, urine, and stool samples at monthly visits. These samples were collected  
 130 after overnight fasting for at least eight hours. The urine and blood samples (in EDTA-, citrate-, and  
 131 serum-vacutainers) were transported to the clinical laboratory at room temperature within 6 hours after  
 132 collection. Peripheral blood mononuclear cells (PBMC) were isolated from EDTA-blood samples, and  
 133 PBMC pellets were stored at -80°C till the DNA extraction. At monthly visits, clinical tests and health  
 134 examinations such as blood pressure, body height, weight, and abdominal circumference measurements  
 135 were performed by accredited labs and appointed doctors. At bi-monthly visits, plasma samples were  
 136 taken, and omics (proteomics and metabolomics) measurements were assessed. At months one, six, and  
 137 13, the PBMC samples were used to measure DNA methylation. At month 13, only 20 participants were  
 138 able to donate samples due to the start of the COVID-19 pandemic. Table 1 presents an overview of the  
 139 sample collection. All samples have been collected in accordance with the applicable Belgian regulations  
 140 regarding the use of human body material for scientific research (Belgian Law on use of human body  
 141 material, 2008) and the Belgian Royal Decree on biobanks (*Het Koninklijk Besluit betreffende de*  
 142 *biobanken. Belgisch Staatsblad 05.02.2018. Brussels (2018)*).

143 **Table 1:** Data collection of IAM Frontier study

Data	Measurement technique	Timepoints – month	Type of sample	Total samples	Remarks
<b>DNA methylation</b>	Illumina Infinium MethylationEPIC BeadChips	2-8-13	PBMC	96	20 samples at month 13, 16 technical replicates
<b>Clinical and physiological</b>	Clinical biochemistry, blood cell counts, health examination	1-2-3-4-5-6-7-8-9-10-11-12-13	Whole blood, serum PB, fasting urine	380	20 samples at month 13
<b>Metabolomics</b>	NMR - MS	1-3-5-7-9-11-13	Plasma	200	
<b>Proteomics</b>	LC-MSMS -PEA	1-3-5-7-9-11-13	Plasma	200	
<b>Microbiome</b>	Illumina MiSeq	1-6-13	Stool	20	16 samples at month 13

144  
145

## 146 DNA methylation assay

147 The DNA methylation assay was carried out using Diagenode Epigenomic Services (Vienna, Austria, Cat  
 148 No. G02090000). PBMC samples were sent for DNA methylation profiling using the Illumina Infinium  
 149 MethylationEPIC array BeadChip (850K) platform to analyse the methylation status of more than  
 150 850,000 CpGs per sample. This microarray covers 96% of CpG Islands and 99% of annotated RefSeq  
 151 genes. We performed the DNA methylation data pre-processing and the corresponding details can be  
 152 found in Supplementary Document Section 1.

153

## 154 Analysis of epigenetic clocks and predictors

155 We applied 29 different epigenetic age and health trait predictors (see Figure 2). The Skin & Blood  
 156 Clock<sup>19</sup>, Multi-tissue Clock<sup>20</sup>, HannumAge<sup>21</sup>, DNAmTL<sup>22</sup>, PhenoAge<sup>23</sup>, GrimAge<sup>24</sup>, GrimAge DNAmPACKYRS

157 and GrimAge protein levels (DNAmADM, B2M, CystatinC, GDF15, Leptin, PAI1, TIMP1) were obtained by  
158 Steve Horvath's DNA Methylation Age Calculator available on <http://dnamage.genetics.ucla.edu/>. The  
159 MethylDetectR predictions (Age, Alcohol, BMI, HDL, BodyFat, Waist:Hip Ratio and Smoking)<sup>25</sup> were  
160 calculated using the code available at <https://zenodo.org/record/4646300>. The methylation Pace of Age  
161 (mPoA)<sup>26</sup> was estimated using the code available at <https://github.com/danbelsky/DunedinPoAm38>. The  
162 MetaClock<sup>27</sup> code was received by e-mail from the author Morgan E Levine. EpiTOC scores were  
163 calculated using the code available in the corresponding publication.<sup>28</sup> EpiTOC<sup>29</sup> scores were calculated  
164 using the code available from <https://doi.org/10.5281/zenodo.2632938>, and MiAge<sup>30</sup> scores were  
165 calculated using the code available from <http://www.columbia.edu/~sw2206/software.htm>. Alcohol  
166 predictions<sup>31</sup> were generated using the dnamlci R package available from  
167 <https://github.com/yousefi138/dnamlci>. Elliot's smoking score<sup>32</sup>, Zhang's smoking score<sup>33</sup> and  
168 EpiSmokEr's smoking status<sup>34</sup> were obtained using the R package EpiSmokEr available at  
169 <https://github.com/sailalithabollepalli/EpiSmokEr>.

170 GrimAge, HannumAge, MethylDetectRAge, mPoA, as well as the smoking, alcohol and health trait  
171 predictors, were originally developed for whole blood measurements but have been shown to work well  
172 with PBMCs in our study and others<sup>35-38</sup>. Table 2 shows the list of clocks implemented in this study  
173 including clocks predicted from clinical, metabolomics, and proteomics data (see the next section).

174 We also predicted blood counts using minfi<sup>39</sup> and the Reinius reference dataset<sup>40</sup> as well as IDOL using  
175 the Salas reference dataset<sup>41</sup> with the code available from  
176 <https://github.com/immunomethylomics/FlowSorted.Blood.EPIC>.

177 The correlation between predicted and chronological age was calculated using Pearson's correlation.  
178 We excluded technical replicates from the calculation of correlation coefficients.

179 For the longitudinal analyses of epigenetic predictions, we used the 16 technical replicates available  
180 from our study to estimate technical variation. Two technical replicates were generated within each of  
181 the three DNA methylation time points, and ten additional technical replicates of the two previous time  
182 points were generated at the third time point, providing detailed insight into technical variation  
183 influencing the predictions. We used the maximum absolute difference observed between technical  
184 replicates as a threshold to define potential biological differences across time points after also adding  
185 the chronological time that passed between time points. For example, the maximum absolute  
186 differences observed for the Skin & Blood Clock across technical replicates was 2.56 years (the reported  
187 median error in blood is 2.5 years<sup>19</sup>), and the threshold we used represents the maximum differences  
188 observed among technical replicates plus the chronological time that passed between the time points  
189 which are maximum 343 days (0.94 years).

190 For the global analyses of our dataset and the identification of biological outliers of interest based on  
191 our cohort, we introduced a Mean Absolute Deviation (MAD) threshold of +/- 2\*MAD and +/- 3\*MAD  
192 across all biological replicates.

193

194

195

196 **Table 2:** List of applied clinical and omics ageing clocks. Rows with colours refers to clocks that are  
 197 further investigated: yellow, red, and blue rows correspond to the clocks that were estimated using  
 198 clinical, proteomics, and DNA methylation data, respectively.

Clock	Reference	Remarks
<b>MLR-Levine</b> <sup>42</sup>	Levine, ME. 2013. <i>Gerontol A Biol Sci Med Sci</i> .	Predicts chronological/biological age
<b>PCA-Levine</b> <sup>42</sup>		Predicts chronological/biological age
<b>KDM</b>	Klemera, P. and Doubal, S. 2006. <i>Mech Ageing Dev</i> . Levine, ME. 2013. <i>Gerontol A Biol Sci Med Sci</i> .	Predicts chronological/biological age
<b>ProtAge-Tanaka</b> <sup>43</sup>	Tanaka, T., et al. 2018. <i>Aging Cell</i> .	Predicts chronological/biological age
<b>ProtAge-MD</b> <sup>44</sup>	Macdonald-Dunlop, E., et al. 2022. <i>Aging</i> .	Predicts chronological/biological age
<b>ClinAge-MD</b> <sup>44</sup>	Macdonald-Dunlop, E., et al. 2022. <i>Aging</i> .	Overestimated BA (median BA 750 years), not shown
<b>MetaboAge-MD</b> <sup>44</sup>		Overestimated BA (median BA 600 years), not shown
<b>MetaboAge-vdA</b> <sup>45</sup>	van den Akker, EB., et al. 2020. <i>Circ Genom Precis Med</i> .	Underestimated BA (median BA –5000 years), not shown
<b>Metabonomics</b> <sup>46</sup>	Hertel, J., et.al. 2016. <i>Journal of Proteome Research</i> .	Missing variables (only 22% vars. are available), not shown
<b>Skin &amp; blood clock</b> <sup>19</sup>	Horvath, S., et al. 2018. <i>Aging</i> .	Predicts chronological age
<b>MethylDetectR Age</b> <sup>25</sup>	Hillary, R. and Marioni, R.	Predicts chronological age
<b>Multi-tissue clock</b> <sup>20</sup>	Horvath, S. 2013. <i>Genome Biology</i> .	Predicts chronological/biological age
<b>Hannum clock</b> <sup>21</sup>	Hannum, G., et al. 2013. <i>Molecular Cell</i> .	Predicts chronological/biological age
<b>mPoA</b> <sup>26</sup>	Belsky, D., et al. 2020. <i>eLife</i> .	Predicts the pace of ageing
<b>PhenoAge</b> <sup>23</sup>	Levine, M., et al. 2018. <i>Aging</i> .	Predicts health- and lifespan
<b>GrimAge</b> <sup>24</sup>	Lu, A., et al. 2019. <i>Aging</i> .	Predicts health- and lifespan
<b>Metaclock</b> <sup>27</sup>	Liu, Z., et al. 2020. <i>Aging Cell</i> .	Predicts mortality
<b>EpiTOC</b> <sup>28</sup>	Yang, Z., et al. 2016. <i>Genome Biology</i> .	Predicts mitotic age
<b>EpiTOC2</b> <sup>29</sup>	Teschendorff, A.E. 2020. <i>Genome Medicine</i>	Predicts mitotic age
<b>MiAge</b> <sup>30</sup>	Youn, A., and Wang, S. 2018. <i>Epigenetics</i> .	Predicts mitotic age
<b>DNAmTL</b> <sup>22</sup>	Lu, A., et al. 2019. <i>Aging</i> .	Predicts telomere length

199

200

201

## 202 **Analysis of Clinical, Metabolomics, and Proteomics Clocks**

203 The monthly clinical and bi-monthly metabolomics as well as proteomics data were used for predicting  
204 longitudinal biological age using several published calculators. We applied the multiple linear regression  
205 (MLR) model and principal component analysis (PCA) developed by Levine *et al.*<sup>42</sup> –they will be referred  
206 to as MLR-Levine and PCA-Levine– to the clinical data that consist of samples from 12-13 time points per  
207 individual. The model prediction involves both clinical and physiological measurements, including total  
208 cholesterol level, glycated haemoglobin, C-reactive protein, systolic blood pressure, forced expiratory  
209 volume (FEV), and cytomegalovirus (CMV). In the IAM Frontier data, FEV and CMV were not measured,  
210 but we imputed the values with the corresponding median from the original study<sup>47</sup>. The same clinical  
211 variables as in the PCA-Levine model were further used to predict the biological age using the Klemera  
212 and Doubal method (KDM).<sup>48</sup> Unlike the MLR-Levine and the PCA-Levine, KDM also incorporates  
213 chronological age in their estimation procedure. Similarly, we also computed other biological age  
214 predictions based on similar clinical biochemistry variables developed by McDonald-Dunlop *et al.*<sup>44</sup>

215 The proteomics and NMR metabolomics data consist of samples from six to seven time points per  
216 individual, where the samples were sent to the laboratory in four different batches. For the proteomics  
217 data, batch correction normalisation was done prior to the analysis to reduce the technical variation  
218 between batches/plates<sup>49</sup>. We performed PCA and multidimensional scaling (MDS) analyses for the  
219 metabolomics data, where we did not observe any batch effects, so the raw metabolite abundances  
220 were used. In both datasets, there are twenty subjects with technical replicates spread across different  
221 time points. We performed a procedure for selecting the samples (between the originals and the  
222 replicates) by computing cosine similarity coefficients for all samples. The samples with the closest  
223 similarity to the rest of the individuals' measurements were selected. Further, we predicted the  
224 biological age using other published proteomics and metabolomics clocks: ProtAge-MD (from  
225 McDonald-Dunlop *et al.*<sup>16</sup>), MetaboAge-MD, ProtAge-Tanaka, MetaboAge-vdA, and Metabonomics<sup>43-46</sup>.

## 226 **Software tools and programming language**

227 The network (Figure 2) was created in Gephi version 0.9.5<sup>50</sup> and Cytoscape version 3.8.2<sup>51</sup>. All data  
228 analyses were conducted in the R statistical environment version 3.5.1, 4.1.0 and 4.1.3.

## 229 **Results**

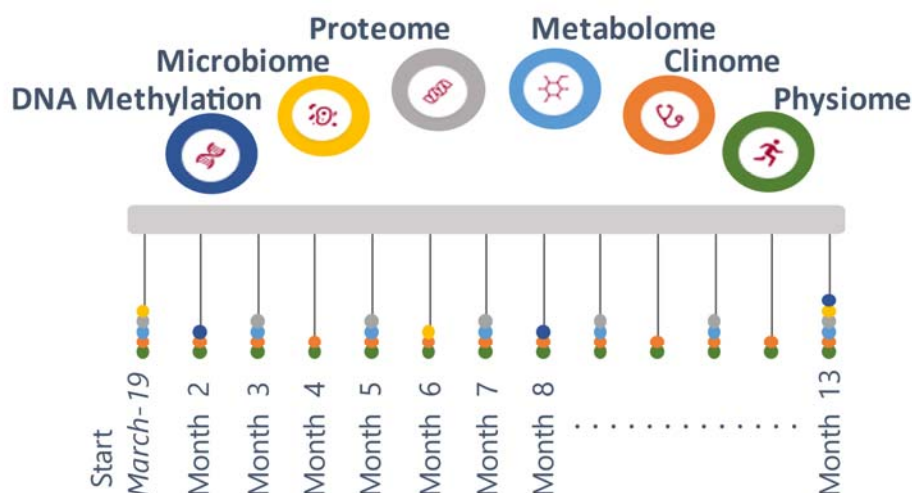
230 From March 2019 to March 2020, the IAM Frontier study collected monthly samples and data (via online  
231 questionnaires and wearable sensors) from 30 healthy (no diagnosed chronic diseases, no self-reported  
232 illnesses except hypertension) and highly motivated individuals. An intake interview was performed to  
233 check whether the volunteers fit the inclusion and exclusion criteria (health, age, sex balance) and to  
234 assess their motivation to join and stay within the study, as the study required monthly site visits for  
235 sample collection, continuous wearing of sensors and weekly questionnaires. All individuals were  
236 followed up with study doctor visits to inform them about their health status (from the clinical grade  
237 biomarkers) as well as provided with genetic counselling with certified personnel when necessary. The  
238 study design is illustrated in Figure 1.

239 In this study, we first explore the global pattern of the values resulting from a multitude of ageing clocks  
240 and examine their utility in predicting personal wellness, health, and biological age (BA). These clocks  
241 were computed for all the IAM Frontier individuals, utilising their clinical biochemistry and physiological



242 data (such as blood pressure, weight, and height), DNA methylation, metabolomics, and proteomics  
243 measurements. Further, we investigate how these clocks predict outcomes across different time points,  
244 leveraging the longitudinal nature of the IAM Frontier study. Individuals with interesting findings are  
245 subjected to further investigation to demonstrate the importance and the relevance of the omics clocks  
246 as personal health assistants, capable of monitoring and assisting the clinical examination and diagnosis.

247

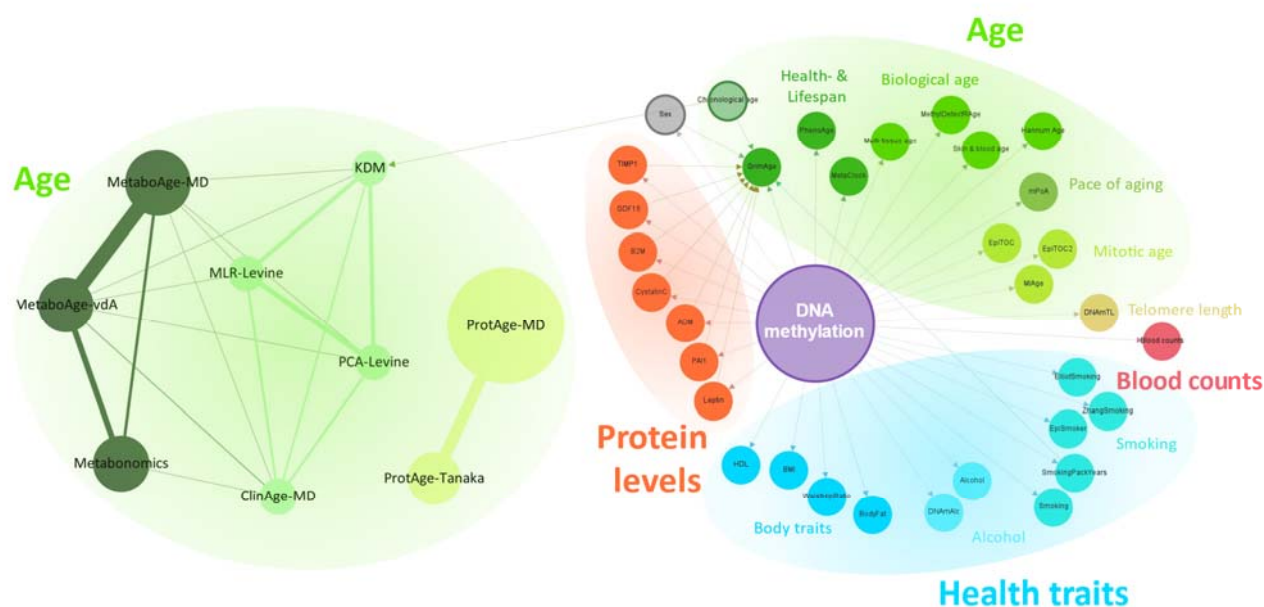


248

249 **Figure 1:** Study design of the IAM Frontier. Longitudinal comprehensive data were collected over the  
250 course of the study including monthly physiological and clinical biochemistry data (13 time points),  
251 bimonthly proteomics and metabolomics data (7 time points), and six-monthly DNA methylation and  
252 microbiome data (3 time points). The study participants consist of 15 males and 15 females, with a  
253 (chronological) age range of 45 – 59 years old.

254

255 Figure 2 shows the overview of ageing clocks that can be estimated from various omics measurements.  
256 We categorise these clocks according to their utility in predicting 1) BA, 2) blood counts, 3) health traits  
257 such as smoking status, alcohol consumption and body mass index (BMI), and 4) plasma protein levels.  
258 By using DNA methylation data, 13 clocks aim to predict age, one clock to predict blood counts, 11  
259 clocks to predict health traits, and seven clocks to predict plasma protein levels. In addition, three  
260 clinical biochemistry clocks, three metabolomics, and two proteomics clocks can also be used for  
261 predicting BA from clinical biochemistry data, NMR metabolomics, and Olink proteomics measurements.  
262 In this study, we focus on investigating the ageing clocks that are particularly useful in predicting BA.



263

264 **Figure 2:** The overview of published clinical and omics ageing clocks and predictors discussed in this  
265 article. The predictors are grouped based on their purpose on predicting age, blood counts, health traits,  
266 and protein levels. Each node represents one predictor connected to another. In the left-hand panel, the  
267 edges represent the ratio of shared parameters, e.g., there are 26 shared parameters between the  
268 MetaboAge-vdA clock and the MetaboAge-MD clock, hence the thickest edge. The size of each node  
269 represents the total number of parameters used in each clock. The right-hand panel shows all DNA  
270 methylation predictors used in this study. Edges indicate the parameters used for each predictor. Due to  
271 the high numbers of DNA methylation sites used by the predictors, nodes and edges are shown in  
272 standard sizes, with no relation to the number of features used or shared.

273

274 In general, in each data type, different ageing clocks use a different set of features. The features used in  
275 ageing clocks will further be referred to as variables. Figure 2 shows that there are some variables that  
276 are shared and utilised in more than one clock, as demonstrated by the edges between clocks (see MLR-  
277 Levine and KDM). It is also possible that these variables are shared across different data types, for  
278 example between the MLR-Levine and the Metabo-MD where albumin is utilised in both clocks. Albumin  
279 and several other variables are present in the clinical biochemistry and metabolomics data; they refer to  
280 the same clinical compounds but are measured by different technologies. Since our study focuses on  
281 ageing clocks that aim to predict BA, it is also worth noting that there are several omics ageing clocks  
282 that include chronological age (CA) in their algorithm, for example, GrimAge and KDM. GrimAge also  
283 includes sex and plasma protein levels predicted from the DNA methylation data in its calculation.

284 Epigenomic, metabolomic and proteomic data are high dimensional. The IAM Frontier study collected  
285 the DNA methylation measurements of more than 850,000 sites per sample using Illumina's Infinium  
286 MethylationEPIC BeadChips as well as 1,068 proteins and 249 metabolites were measured in the  
287 metabolomics and proteomics data of IAM Frontier, respectively. Large numbers of variables are used in

288 ageing clocks working with these data types. Although several epigenetic age clocks based on only a few  
289 loci have been proposed<sup>26,52</sup>, they tend to be less accurate. The most widely used epigenetic clocks and  
290 predictors incorporate between 71<sup>21</sup> and 1030 CpGs<sup>24</sup>. In comparison, ageing clocks based on clinical  
291 biochemistry data or other omics data (metabolomics, proteomics) require nine to 203 parameters<sup>42,44</sup>.

292 The clocks we implemented are presented in Table 2. Some of the clocks were not further investigated  
293 due to showing unrealistic predictions, unavailable model coefficients (e.g., the model intercept  
294 coefficients are not published in the MetaboAge-MD clock), or unavailable variables (e.g., due to  
295 differences in the omics technology, around 80% of the required metabolites used in the Metabonomics  
296 clock were not measured in the IAM Frontier dataset)<sup>22,26-30,44-46</sup>. Different sets of variables with  
297 different sizes are involved in each clock. The included algorithms do not constitute an exhaustive list  
298 but were selected in their applicability to the IAM Frontier study with high confidence due to data  
299 availability and matching underlying assumptions.

300 Although the study's main objective is focused on BA prediction, CA is still incorporated in some  
301 analyses. While CA may not provide the most robust description of human ageing, it offers the most  
302 convenient way to calculate age and is perceived as a standard measure of ageing. Stratification by CA  
303 group is also often done, for example in clinical reference intervals<sup>53,54</sup>. For this reason, we believe it is  
304 valid to compare the predictions of BA with the subjects' CA; see the Pearson correlation coefficients in  
305 Table 3. All the clocks shown in Table 3 are significantly correlated with CA; MethylDetectR and the Skin  
306 & Blood clock give the highest correlation coefficients,  $R=0.90$  and  $R=0.87$ , respectively. This is not  
307 unexpected, as both clocks were developed to predict CA. The kernel densities of the predicted BA as  
308 well as CA are shown in Figure 3. The predicted Skin & Blood clock age gives a similar kernel density as  
309 the CA, both in the position as well as the shape. From this perspective, we may suggest this clock as  
310 the best tool to measure individuals' chronological ageing. However, the correlation between  
311 chronological age and predicted age among all measured biological clocks is the highest for  
312 MethylDetectRAge, another chronological age predictor (Pearson's  $R=0.91$ ), although its predictions  
313 appear to be slightly shifted towards older ages in our dataset. GrimAge, with  $R=0.85$ , gives a position  
314 of the kernel similar to the chronological age, but with a different shape. GrimAge aims to predict  
315 lifespan and healthspan, and as a remark, it also incorporates chronological age in its calculation, unlike  
316 the other clocks which are solely based on DNA methylation markers, other omics, or clinical  
317 measurements. The same remark also applies to KDM-Levine clock, with  $R=0.76$  and an identical  
318 position of the kernel density as compared to the chronological age.

319 We performed different data exploration approaches to compare the BA predictions of each individual  
320 who participated in the IAM Frontier study. At each BA predictor, we observed smaller within-person  
321 predictions at different time points (focusing on *inter-individual variability*) than the between-person  
322 predictions at the same time point (focusing on *intra-individual variability*). The small inter-individual  
323 variabilities essentially show that the predictions within individuals are closer to each other than  
324 between the peers; this observation is similar to the characteristics of common clinical biomarkers when  
325 they are measured longitudinally. Therefore, it is reasonable to analyse the results by looking at the  
326 differences between individuals, and further explore the fluctuation of the predictions within each  
327 individual separately. In Figure 4A, for example, age accelerations which correspond to the difference  
328 between predicted BA and CA are shown at time points two, eight, and 13; the time points that are  
329 shared between all omics and clinical data. Fairly distinct predictions are observed for each clock, and  
330 fluctuations are also seen between time points. Within the same clock, we observe that the between-

331 individual fluctuations are larger than the within-individuals'. The age acceleration predictions of  
 332 GrimAge, the Skin & Blood clock, KDM-Levine, PCA-Levine, and ProtAge-Tanaka are close to zero, i.e.  
 333 their predicted BA values are close to the corresponding CAs. Referring to the estimated kernel density  
 334 in Figure 3, the predicted values of these clocks are similar to the CA with reference to the location. The  
 335 predictions observed in the clinical and proteomics data for all time points are shown in Figure 4B.

336 **Table 3: Correlation between predicted age and chronological age.** Significant correlations are  
 337 displayed in bold (at  $p < 0.05$ ). \*GrimAge and KDM incorporate chronological age in their calculation.

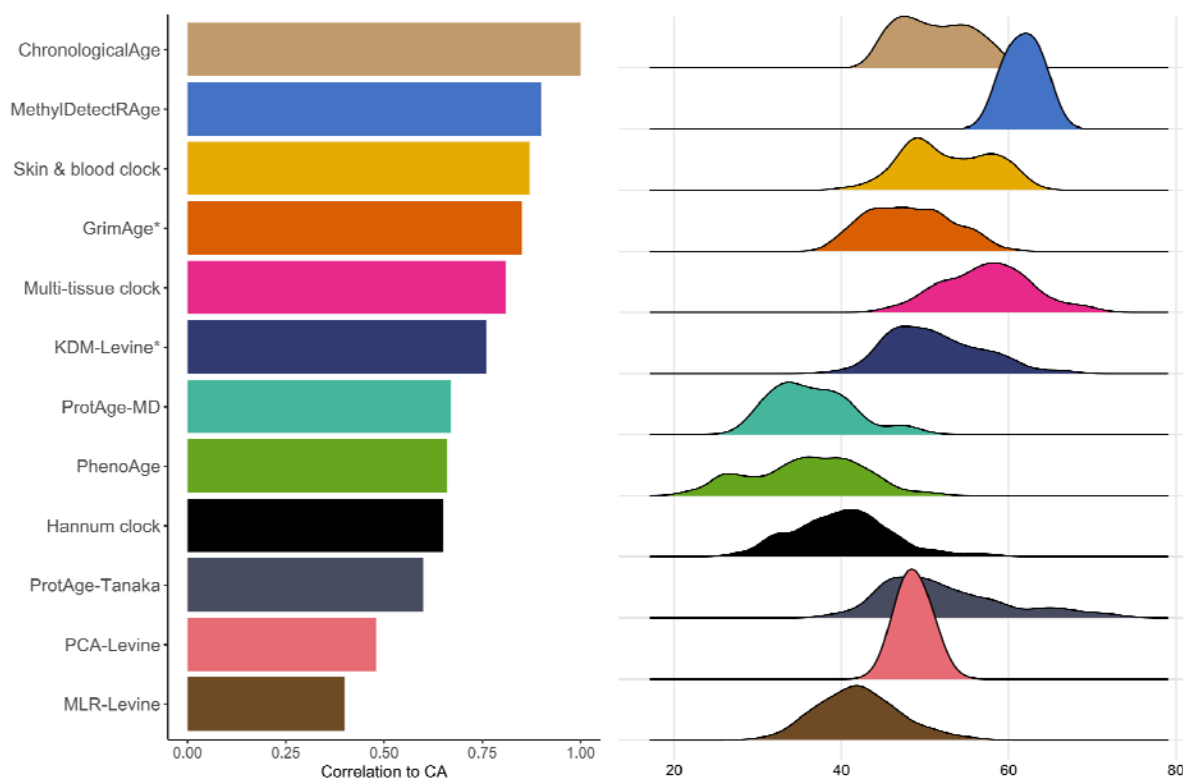
Predictor	Corr. coefficient	p-value
<b>MethylDetectRAge</b>	<b>0.90</b>	<b>2.0E-30</b>
<b>Skin &amp; blood clock</b>	<b>0.87</b>	<b>3.5E-26</b>
<b>GrimAge</b>	<b>0.85</b>	<b>1.1E-23</b>
<b>Multi-tissue clock</b>	<b>0.81</b>	<b>1.6E-19</b>
<b>KDM</b>	<b>0.76</b>	<b>2.2E-16</b>
<b>ProtAge-MD</b>	<b>0.67</b>	<b>2.2E-16</b>
<b>PhenoAge</b>	<b>0.66</b>	<b>3.8E-11</b>
<b>Hannum clock</b>	<b>0.65</b>	<b>4.8E-11</b>
<b>ProtAge-Tanaka</b>	<b>0.60</b>	<b>2.2E-16</b>
<b>MetaClock</b>	<b>0.56</b>	<b>8.7E-08</b>
<b>PCA-Levine</b>	<b>0.48</b>	<b>2.2E-16</b>
<b>MLR-Levine</b>	<b>0.40</b>	<b>1.4E-15</b>
<b>ClinAge-MD</b>	<b>0.37</b>	<b>1.2E-13</b>
<b>EpiTOC</b>	<b>0.25</b>	<b>2.4E-02</b>
MiAge	0.20	7.6E-02
<b>MetaboAge-vdA</b>	<b>0.18</b>	<b>8.6E-03</b>
mPoA	0.18	1.1E-01
MetaboAge-MD	0.08	2.6E-01
EpiTOC2	0.04	7.4E-01

338  
 339 We continue the analyses by investigating the BA and health traits predictions in all IAM Frontier  
 340 participants. Due to the small sample nature of the IAM Frontier study, we are able to examine the  
 341 individual predictions resulting from all clocks. Figure 5A shows the ordered heatmaps of the predicted  
 342 BAs as well as the health trait predictions in all individuals at time points two, eight, and 13. These were  
 343 selected because the results of all clocks are available at these time points, see Table 1. In Figure 5B, the  
 344 MAD thresholds were computed and were used to give the colour annotations. Therefore, only  
 345 deviating predictions appear coloured in the figure. We can observe distinct patterns for ID06, ID08 and  
 346 ID27, detailed below. In Figure 6B, we show the clinical laboratory profiles of these individuals.

347 ID06 shows very high smoking predictions. ID06 is a current smoker, indeed, and hence has a higher risk  
 348 of developing cardiovascular diseases (CVD) and diabetes (Supplementary Figure 3 of CVD and diabetes  
 349 disease risk scores). From the individual plots in Figure 6A, we also observe that the BA predictions of  
 350 ID06 increase over time for some of the ageing clocks, such as in the Skin & Blood clock and PhenoAge.  
 351 This individual was also biologically older at all time points according to the KDM and ProtAge-Tanaka  
 352 clocks. However, the clinical laboratory profiles of ID06 show an increasing trend of the lipid

353 measurements, in line with this individual's increased risk of CVD and diabetes. Interestingly, ID06's B-  
354 cell percentages are higher than the normal range, and the CD4 T-cell and lymphocyte counts are low.  
355 This could show that this individual might also have problems with antibodies and the immune system.  
356 In the questionnaires, ID06 did not report major health burdens except that this individual felt having  
357 low energy, tense muscles, and constant fatigue, with the latter two commonly reported among the  
358 study participants.

359



360

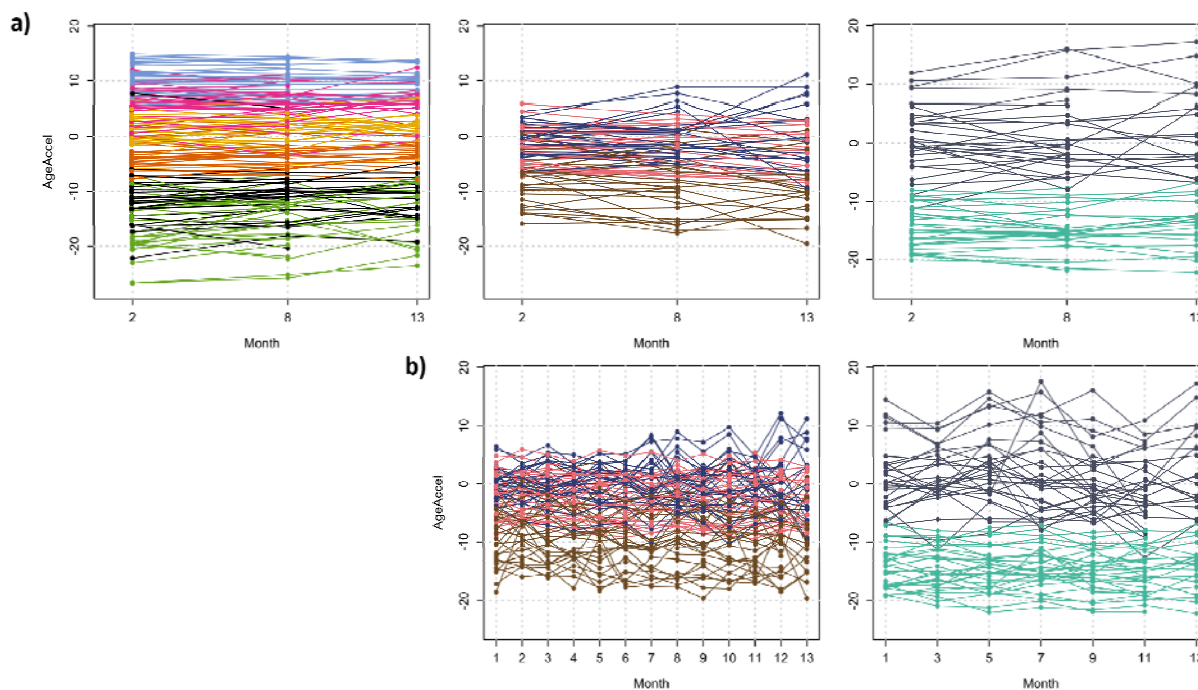
361 **Figure 3:** Kernel density plots of BA predictions from several ageing clocks and their correlations with  
362 the chronological age (CA).

363

364 ID08 appears as the only individual with predicted shortened telomeres across both measured time  
365 points based on the DNAmTL clock, as seen in Figure 5B. This result may indicate premature ageing. In  
366 addition, in almost all the applied epigenetic clocks, this individual was also predicted to be  
367 epigenetically older at the second time point compared to the first (see Figure 6A). The lipid  
368 (cholesterol) profiles of ID08 (see Figure 6B) show an alarming status; the measurements are out-of-  
369 normal range at almost all time points. Other clinical parameters are still within the normal limits,  
370 although the percentages of CD8 T-cell and lymphocyte are high compared to the peers. Based on the  
371 weekly questionnaires, during the course of this study, this individual experienced constant fatigue,  
372 diarrhoea, numbness, indigestion, sleeping problems, stuffy nose, and blurry vision, see Supplementary  
373 Figure 5. Although ID08 does not appear to report all of these health burdens at a significantly higher  
374 level than the other study participants, together with the rapid epigenetic ageing and high lipid profiles

375 observed, they might provide additional support to the premature ageing condition predicted by the  
376 DNAmTL clock.

377 ID27 appears to be different in our analyses in many ways, although most of the epigenetic, proteomic  
378 and clinical ageing clocks predict this individual to be in a healthy state – healthier and biologically  
379 younger than the peers. However, ID27 shows very strong outlier BA predictions corresponding to the  
380 Hannum clock as well as very different smoking and health trait predictions. It is the only subject with a  
381 completely distinct Hannum age acceleration compared to the peers at all time points, epigenetically  
382 younger at the second time point as compared to the first across all clocks, and with conflicting smoking  
383 predictions (this individual was not a current smoker). The BA predictions of the clinical and proteomics  
384 clocks also show a general decreasing trend over time, where ID27 was biologically younger than  
385 chronologically, according to some of those clocks. In addition, from the DNA methylation and  
386 proteomics analyses, this subject is discovered to be far outside the main cluster in the corresponding  
387 PCA plots (Supplementary Figure 4a and 4b). When looking at DNA methylation predicted blood cell  
388 composition, we observe a strongly increased proportion of B cell (Supplementary Figure 6). The finding  
389 is confirmed by actual blood counts showing the same abnormalities, clearly indicating a hematological  
390 problem. This explains why ID27's age predictions appear as extreme outliers according to Hannum's  
391 clock, as it is sensitive to blood composition changes, and may also explain the conflicting and  
392 unexpected outlier predictions obtained for several health traits such as smoking and alcohol intake,  
393 among others. Throughout the study period, ID27 reported constant medium backpain, a slight  
394 headache and blurry vision.



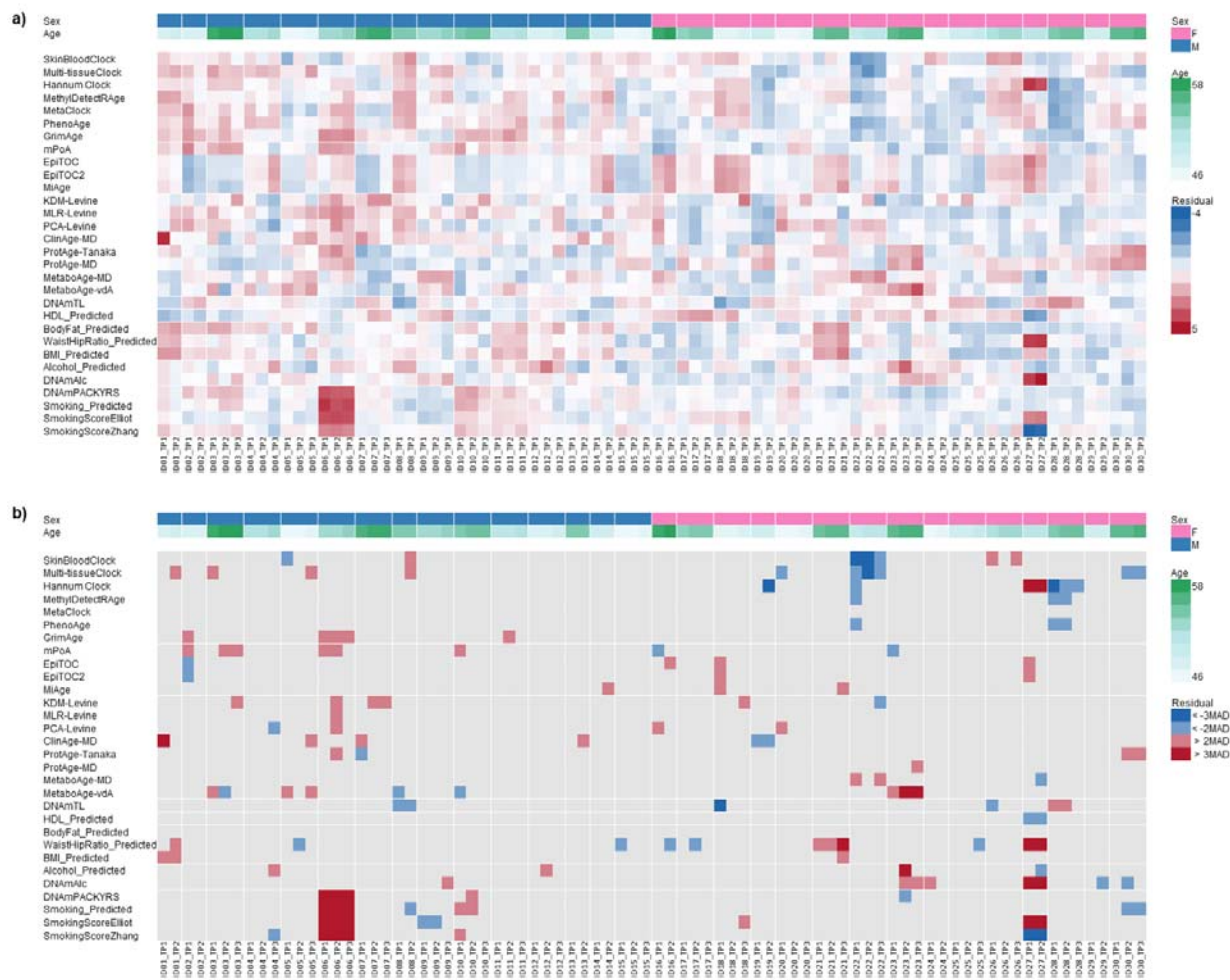
395  
396 **Figure 4:** Age acceleration of all IAM Frontier participants in different clocks. (A) Age acceleration based  
397 on the Multi-tissue clock (pink), Skin & Blood clock (yellow), PhenoAge (green), GrimAge (orange),  
398 MethylDetectR (light blue), and Hannum clock (black). (B) Age acceleration based on MLR-Levine clock

399 (brown), PCA-Levine clock (light pink), and KDM clock (blue). (C) Age acceleration based on ProtAge-  
400 Tanaka (grey) and ProtAge-MD (tosca).

401 As the final analysis, we present an unsupervised heatmap and clustering of all predictions and actual  
402 measurements of our study in Figure 7. This analysis shows potential patterns arising when all clocks  
403 and measurements are included and how they may be related to each other. For example, predictions  
404 from epigenetic clocks with high Pearson correlation coefficients with CA (MethylDetectRAge, Skin &  
405 blood clock, GrimAge) are indeed clustered together with CA, showing a strong linear relationship and  
406 possibly similar predictive mechanism. However, clinical, proteomics, and metabolomics-based clocks  
407 stand apart from this cluster, suggesting their predictive mechanisms may be distinct despite their  
408 significant correlations with CA.

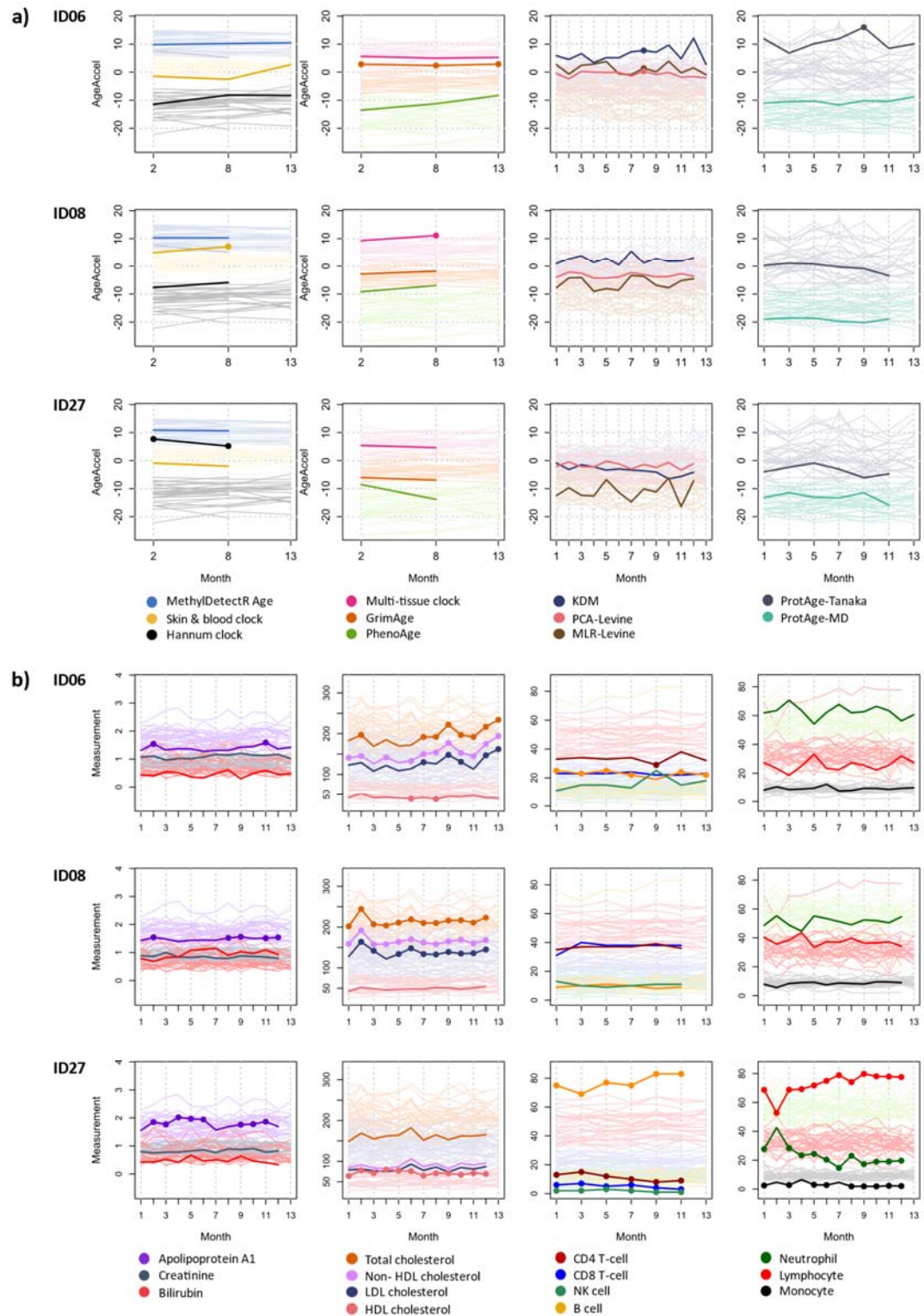
409 Also in Figure 7, ID06 and ID27 are clearly seen to be different in several indicators, especially in the  
410 blood cells prediction. Our results for ID06, ID08, and ID27 as described above illustrate that the  
411 deviation of human biological ageing can be discovered when a comprehensive analysis within the  
412 biological age prediction framework is done. The IAM Frontier study followed a communication strategy  
413 to discuss these findings, or so-called incidental findings (IF) including genetic alterations back to the  
414 IAM Frontier participants<sup>55</sup>. Different clocks can show various results, and additional analyses on further  
415 assessment types, such as clinical laboratory tests and reports on personal health problems, can  
416 complement and enhance the acquired insight.





417  
 418 **Figure 5: a)** Ordered heatmap. ID06 has higher predicted smoking scores and ID27 is an outlier in several  
 419 predictions. A slight sex effect is also visible. **b)** Reduced ordered heatmap based on MAD thresholds.

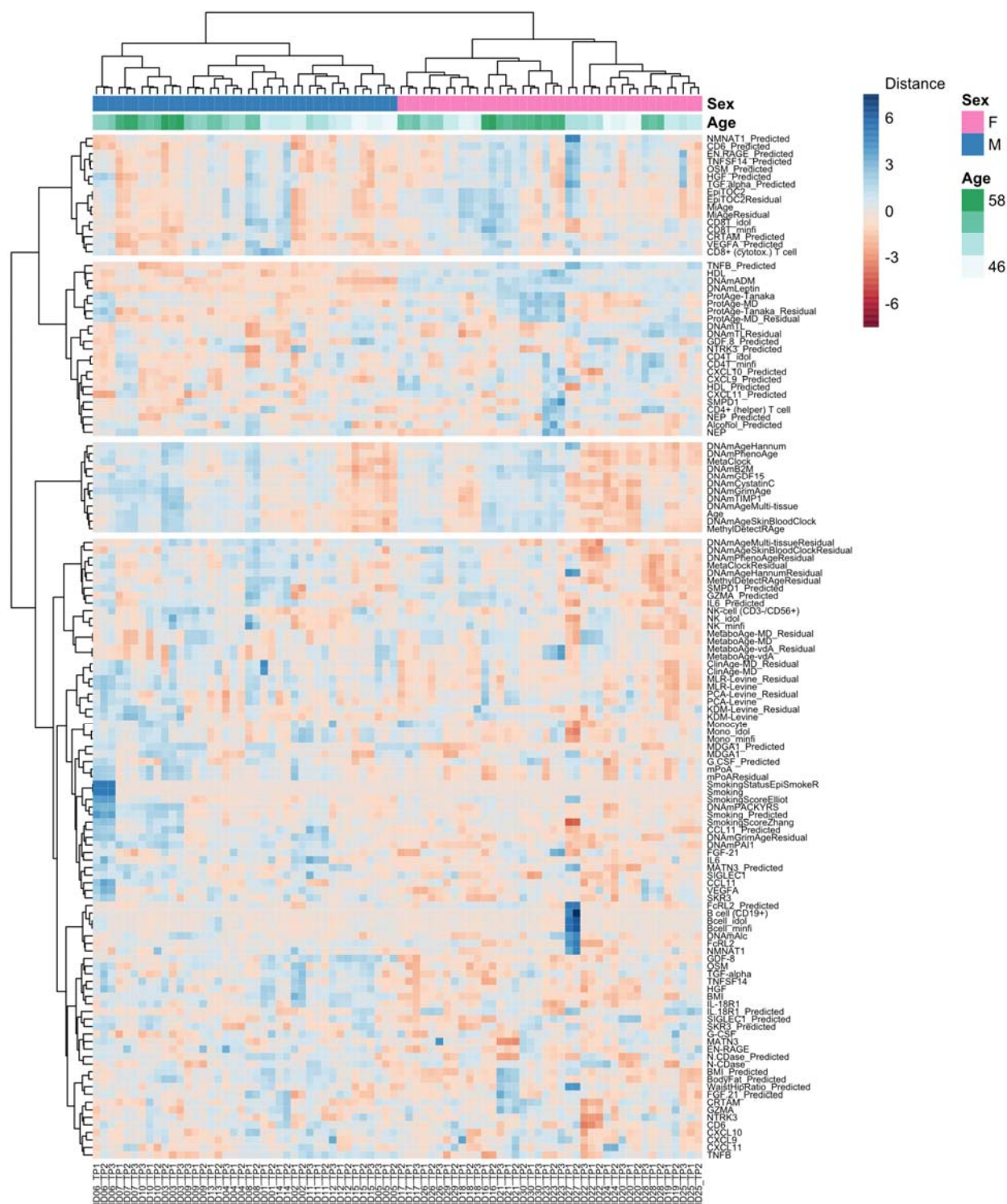




420

421 **Figure 6: a)** Age acceleration of ID06, ID08, and ID27. Prediction values that are significantly different  
 422 from the rest of the cohort are marked with full circles. **b)** Clinical and blood cell profiles of ID06, ID08,

423 and ID27. Measurements that are outside the cohort reference intervals are marked with full circles. The  
 424 blood cell counts are shown in percentages.



425

426 **Figure 7:** Unsupervised heatmap of the estimates of all clocks and predictors together with the actual  
427 measurements. All participants in three DNA methylation time points are included. The clustering based  
428 on the Manhattan-Ward D distances is also showed, annotated by participants' age and sex.

## 429 Discussion and conclusion

430 Age stands as the principal risk determinant for ailments, impairments and diseases. The pursuit of  
431 mitigating age-related illnesses and extending the healthful years of life has led to the innovative idea of  
432 directly targeting the ageing process to restore physiological functionality. Realising this ambitious goal  
433 necessitates the precise assessment of biological age and the pace of ageing at the molecular level.  
434 Propelled by the latest breakthroughs in high-throughput omics technologies, a novel suite of tools has  
435 emerged for the quantitative analysis of biological ageing. By leveraging data from various domains such  
436 as epigenomics, proteomics, and metabolomics, and employing machine learning techniques, “biological  
437 ageing clocks” have been constructed. These clocks have proven their ability to pinpoint potential  
438 biomarkers of biological ageing, offering unprecedented insights into the ageing process.

439 A recent review paints today's landscape of biological age (BA) prediction algorithms using omics  
440 technologies<sup>56</sup>. These methods were claimed to better represent the biological state of an organism  
441 than the chronological age (CA). Ageing clocks for BA are also starting to appear as commercial products,  
442 serving as a window into the personal health status. In this manuscript, we use a unique deep-  
443 phenotyping dataset that allows us to perform and analyse multiple BA predictors using different data  
444 types side by side. The longitudinal nature of the data enables us to study the individuals' fluctuations  
445 between time points, exploring their changes in BA predictions over time. We optimise our analyses  
446 using the extensive set of technical replicates (see Table 1) generated to estimate technical variation in  
447 our dataset and design our analyses correspondingly (see Methods and Supplementary Material Section  
448 1).

449 The BA analyses in the IAM Frontier data shows that BA predictions can fluctuate over time; both an  
450 increase and a decrease might happen depending on the biological conditions rather than monotonically  
451 increase by time, as in CA. Repeated measurements over time are highly valuable, as outliers can also be  
452 caused by normal biological fluctuations. In our study, most BA predictions seem to be “stable”, that is,  
453 within the expected range of variability across the available time points. However, there are individuals  
454 whose predictions do change more than expected over time, and where this is the case, they are often  
455 consistent across multiple BA predictors and time points. A comprehensive exploration of the BA  
456 prediction differences between individuals of our study leads to three individuals with distinct BA  
457 predictions as compared to their peers.

458 The BA predictions of ID06, ID08 and ID27, give a good example where information from different data  
459 types can not only support the results of standard laboratory tests but also provide additional insight.  
460 For example, the lipid laboratory test of ID08 shows a worrying result where almost all measurements  
461 fall outside the normal ranges. By applying different BA predictors, we discovered that this individual is  
462 also predicted to have significantly shortened telomeres across all time points, an indicator of  
463 potentially accelerated ageing.

464 Another important finding is that despite not reporting major or more severe symptoms than the peers,  
465 ID27 shows strongly altered epigenetic predictions which are reflected in blood cell count abnormalities  
466 observed in all antibody-related blood cells. These strong alterations may be what impacted some of the

467 reported epigenetic health trait predictions. Of note, according to the developers of those health trait  
468 predictors, they should currently only be used at a population level and are not yet supposed to provide  
469 reliable predictions at the individual level. Training data from larger-scale cohorts, including diseased  
470 individuals, will be required to refine these additional health trait predictors and enable their clinical  
471 use<sup>25</sup>. Irrespectively, the clearly abnormal epigenetic measurements and predictions of ID27 would  
472 undoubtedly also have led to further clinical tests if detected in a wellness- or preventative healthcare  
473 setting, revealing the ongoing but previously undetected pathological process.

474 Taken together, our findings demonstrate the value and potential of epigenetic predictors and biological  
475 age estimators, particularly for risk assessment and early detection. They can reveal unexpected  
476 deviations and inform about the probability of having or developing a disease, for example, as shown  
477 here with individual ID27. They can also contribute to known clinically relevant outcomes and serve as  
478 vital instruments for explaining many biological phenomena. Currently, the extensive and complex  
479 preprocessing procedures required to obtain high quality results from omics data are still hindering  
480 many of the corresponding predictors from developing their full clinical potential, in particular at the  
481 individual level. However, with the field growing and maturing, we argue that BA predictions should be  
482 considered as crucial biomarkers that can well-complement routine medical tests and CA.

483 Indeed, omics data have already begun to enter clinical practice<sup>57</sup>, making omics-based BA predictions  
484 feasible. Added to standard laboratory results, they can give a valuable complementary outlook assisting  
485 the doctors' decision-making. Once omics technologies have been fully incorporated into the medical  
486 routine, BA predictions will likely become standard measurements regularly discussed between patients  
487 and medical professionals. A novel personalised value to identify the "normal" BA for an individual could  
488 also be estimated, together with common clinical measures, to provide precise individual  
489 interpretations<sup>58,59</sup>. Further longitudinal studies with a more diverse population, including diseased  
490 patients, will undoubtedly give broader assurance and validation of the significance of BA predictions at  
491 the personal level.

492 As the field of biological ageing advances, the construction of BA using ageing clocks employing diverse  
493 data sources such as epigenomics, proteomics, and metabolomics could be proven effective in  
494 uncovering novel biomarkers of biological ageing. The contemporary trend of profiling cohorts through  
495 multi-omics technologies is paving the way for a more comprehensive understanding of the molecular  
496 underpinnings of ageing. Future endeavours to weave multi-omics into ageing clocks are poised to not  
497 only broaden our grasp of the molecular signatures that characterise ageing but also enhance the  
498 predictive powers of these models. Furthermore, the successful incorporation of physiological and tissue  
499 function parameters into ageing clock models could open new avenues of exploration. The continued  
500 expansion of this integrative approach is anticipated to provide more discernible and actionable insights,  
501 solidifying the role of ageing clocks as indispensable tools in the evolving landscape of personalised  
502 medicine and ageing research.

## 503 **Contributors**

504 Conceptualisation, M.P., G.E., and S.E.; Formal analysis, M.P. and S.E.; Visualisation, M.P. and S.E.;  
505 Writing – Original draft, M.P., G.E. and S.E.; Writing – Review & Editing, G.E. and S.E.; Supervision; G.E.,  
506 S.E., O.T., and S.B.

## 507 **Acknowledgments**

508 -

509

510

## 511 Data sharing

512 The IAM Frontier longitudinal dataset are available from the corresponding authors on a reasonable  
513 request.

## 514 Declaration of interests

515 No conflicts of interest to disclose.

## 516 Supplementary Material

517 A supplementary document is available online.

## 518 References

- 519 1. López-Otín C, Blasco MA, Partridge L, Serrano M, Kroemer G. The Hallmarks of Aging. *Cell*.  
520 2013;153(6):1194-1217. doi:10.1016/J.CELL.2013.05.039
- 521 2. Jylhävä J, Pedersen NL, Hägg S. Biological Age Predictors. *EBioMedicine*. 2017;21:29-36.  
522 doi:10.1016/J.EBIOM.2017.03.046
- 523 3. Blackburn EH, Greider CW, Szostak JW. *Telomeres and Telomerase: The Path from Maize,*  
524 *Tetrahymena and Yeast to Human Cancer and Aging.*; 2006.  
525 <http://www.nature.com/naturemedicine>
- 526 4. Zhu X, Han W, Xue W, et al. The association between telomere length and cancer risk in  
527 population studies OPEN. Published online 2016. doi:10.1038/srep22243
- 528 5. Leucocyte telomere length and risk of cardiovascular disease: systematic review and meta-  
529 analysis. doi:10.1136/bmj.g4227
- 530 6. Madrid AS, Rode L, Nordestgaard BG, Bojesen SE. Short Telomere Length and Ischemic Heart  
531 Disease: Observational and Genetic Studies in 290 022 Individuals. Published online 2016.  
532 doi:10.1373/clinchem.2016.258566
- 533 7. Breitling LP, Saum KU, Perna L, Schöttker B, Holleczer B, Brenner H. Frailty is associated with  
534 the epigenetic clock but not with telomere length in a German cohort. *Clin Epigenetics*.  
535 2016;8(1):21. doi:10.1186/s13148-016-0186-5
- 536 8. Vetter VM, Meyer A, Karbasiyan M, Steinhagen-Thiessen E, Hopfenmüller W, Demuth I.  
537 Epigenetic Clock and Relative Telomere Length Represent Largely Different Aspects of Aging in  
538 the Berlin Aging Study II (BASE-II). *The Journals of Gerontology: Series A*. 2019;74(1):27-32.  
539 doi:10.1093/gerona/gly184



- 540 9. Marioni RE, Harris SE, Shah S, et al. The epigenetic clock and telomere length are independently  
541 associated with chronological age and mortality. *Int J Epidemiol.* 2018;47(1):356-356.  
542 doi:10.1093/ije/dyx233
- 543 10. Bocklandt S, Lin W, Sehl ME, et al. Epigenetic Predictor of Age. *PLoS One.* 2011;6(6):e14821.  
544 doi:10.1371/journal.pone.0014821
- 545 11. Horvath S, Raj K. DNA methylation-based biomarkers and the epigenetic clock theory of ageing.  
546 Published online 2018. doi:10.1038/s41576-018-0004-3
- 547 12. Ecker S, Beck S. The epigenetic clock: a molecular crystal ball for human aging? *Aging.*  
548 2019;11(2):833-835. doi:10.18632/aging.101712
- 549 13. Jansen R, Han LK, Verhoeven JE, et al. An integrative study of five biological clocks in somatic  
550 and mental health. *Elife.* 2021;10. doi:10.7554/eLife.59479
- 551 14. Crimmins EM, Thyagarajan B, Levine ME, Weir DR, Faul J. Associations of Age, Sex,  
552 Race/Ethnicity, and Education With 13 Epigenetic Clocks in a Nationally Representative U.S.  
553 Sample: The Health and Retirement Study. *The Journals of Gerontology: Series A.*  
554 2021;76(6):1117-1123. doi:10.1093/gerona/glab016
- 555 15. Knoppers T, Beauchamp E, Dewar K, et al. The omics of our lives: practices and policies of  
556 direct-to-consumer epigenetic and microbiomic testing companies. *New Genet Soc.*  
557 2021;40(4):541-569. doi:10.1080/14636778.2021.1997576
- 558 16. Carbonara K, MacNeil AJ, O'Leary DD, Coorsen JR. Profit versus Quality: The Enigma of  
559 Scientific Wellness. *J Pers Med.* 2022;12(1):34. doi:10.3390/jpm12010034
- 560 17. VITO Health Belgium. I AM Frontier Study. Accessed January 12, 2023.  
561 <https://iammyhealth.eu/en/i-am-frontier>
- 562 18. MacNee W, Rabinovich RA, Choudhury G. Ageing and the border between health and disease.  
563 *European Respiratory Journal.* 2014;44(5):1332-1352. doi:10.1183/09031936.00134014
- 564 19. Horvath S, Oshima J, Martin GM, et al. Epigenetic clock for skin and blood cells applied to  
565 Hutchinson Gilford Progeria Syndrome and ex vivo studies. *Aging.* 2018;10(7):1758-1775.  
566 doi:10.18632/aging.101508
- 567 20. Horvath S. DNA methylation age of human tissues and cell types. *Genome Biol.*  
568 2013;14(10):R115. doi:10.1186/gb-2013-14-10-r115
- 569 21. Hannum G, Guinney J, Zhao L, et al. Genome-wide Methylation Profiles Reveal Quantitative  
570 Views of Human Aging Rates. *Mol Cell.* 2013;49(2):359-367. doi:10.1016/j.molcel.2012.10.016
- 571 22. Lu AT, Seeboth A, Tsai PC, et al. DNA methylation-based estimator of telomere length. *Aging.*  
572 2019;11(16):5895-5923. doi:10.18632/aging.102173
- 573 23. Levine ME, Lu AT, Quach A, et al. An epigenetic biomarker of aging for lifespan and healthspan.  
574 *Aging.* 2018;10(4):573-591. doi:10.18632/aging.101414

- 575 24. Lu AT, Quach A, Wilson JG, et al. DNA methylation GrimAge strongly predicts lifespan and  
576 healthspan. *Aging*. 2019;11(2):303-327. doi:10.18632/aging.101684
- 577 25. Hillary RF, Marioni RE. MethylDetectR: a software for methylation-based health profiling.  
578 *Wellcome Open Res*. 2021;5:283. doi:10.12688/wellcomeopenres.16458.2
- 579 26. Belsky DW, Caspi A, Arseneault L, et al. Quantification of the pace of biological aging in humans  
580 through a blood test, the DunedinPoAm DNA methylation algorithm. *Elife*. 2020;9.  
581 doi:10.7554/eLife.54870
- 582 27. Liu Z, Leung D, Thrush K, et al. Underlying features of epigenetic aging clocks in vivo and in  
583 vitro. *Aging Cell*. 2020;19(10). doi:10.1111/ace1.13229
- 584 28. Yang Z, Wong A, Kuh D, et al. Correlation of an epigenetic mitotic clock with cancer risk.  
585 *Genome Biol*. 2016;17(1):205. doi:10.1186/s13059-016-1064-3
- 586 29. Teschendorff AE. A comparison of epigenetic mitotic-like clocks for cancer risk prediction.  
587 *Genome Med*. 2020;12(1):56. doi:10.1186/s13073-020-00752-3
- 588 30. Youn A, Wang S. The MiAge Calculator: a DNA methylation-based mitotic age calculator of  
589 human tissue types. *Epigenetics*. 2018;13(2):192-206. doi:10.1080/15592294.2017.1389361
- 590 31. Liu C, Marioni RE, Hedman ÅK, et al. A DNA methylation biomarker of alcohol consumption. *Mol*  
591 *Psychiatry*. 2018;23(2):422-433. doi:10.1038/mp.2016.192
- 592 32. Elliott HR, Tillin T, McArdle WL, et al. Differences in smoking associated DNA methylation  
593 patterns in South Asians and Europeans. *Clin Epigenetics*. 2014;6(1):4. doi:10.1186/1868-7083-  
594 6-4
- 595 33. Zhang Y, Elgizouli M, Schöttker B, Holleczeck B, Nieters A, Brenner H. Smoking-associated DNA  
596 methylation markers predict lung cancer incidence. *Clin Epigenetics*. 2016;8(1):127.  
597 doi:10.1186/s13148-016-0292-4
- 598 34. Bollepalli S, Korhonen T, Kaprio J, Anders S, Ollikainen M. EpiSmokEr: a robust classifier to  
599 determine smoking status from DNA methylation data. *Epigenomics*. 2019;11(13):1469-1486.  
600 doi:10.2217/epi-2019-0206
- 601 35. Sadahiro R, Knight B, James F, et al. Major surgery induces acute changes in measured DNA  
602 methylation associated with immune response pathways. *Sci Rep*. 2020;10(1):5743.  
603 doi:10.1038/s41598-020-62262-x
- 604 36. Sehl ME, Rickabaugh TM, Shih R, et al. The Effects of Anti-retroviral Therapy on Epigenetic Age  
605 Acceleration Observed in HIV-1-infected Adults. *Pathog Immun*. 2020;5(1):291.  
606 doi:10.20411/pai.v5i1.376
- 607 37. Corley MJ, Pang APS, Dody K, et al. Genome-wide DNA methylation profiling of peripheral  
608 blood reveals an epigenetic signature associated with severe COVID-19. *J Leukoc Biol*.  
609 2021;110(1):21-26. doi:10.1002/JLB.5HI0720-466R

- 610 38. Dugué PA, Bassett JK, Wong EM, et al. Biological Aging Measures Based on Blood DNA  
611 Methylation and Risk of Cancer: A Prospective Study. *JNCI Cancer Spectr.* 2021;5(1).  
612 doi:10.1093/jncics/pkaa109
- 613 39. Aryee MJ, Jaffe AE, Corrada-Bravo H, et al. Minfi: a flexible and comprehensive Bioconductor  
614 package for the analysis of Infinium DNA methylation microarrays. *Bioinformatics.*  
615 2014;30(10):1363-1369. doi:10.1093/bioinformatics/btu049
- 616 40. Reinius LE, Acevedo N, Joerink M, et al. Differential DNA Methylation in Purified Human Blood  
617 Cells: Implications for Cell Lineage and Studies on Disease Susceptibility. *PLoS One.*  
618 2012;7(7):e41361. doi:10.1371/journal.pone.0041361
- 619 41. Salas LA, Koestler DC, Butler RA, et al. An optimized library for reference-based deconvolution  
620 of whole-blood biospecimens assayed using the Illumina HumanMethylationEPIC BeadArray.  
621 *Genome Biol.* 2018;19(1):64. doi:10.1186/s13059-018-1448-7
- 622 42. Levine ME. Modeling the Rate of Senescence: Can Estimated Biological Age Predict Mortality  
623 More Accurately Than Chronological Age? *J Gerontol A Biol Sci Med Sci.* 2013;68(6):667-674.  
624 doi:10.1093/gerona/gls233
- 625 43. Tanaka T, Biancotto A, Moaddel R, et al. Plasma proteomic signature of age in healthy humans.  
626 *Aging Cell.* 2018;17(5):e12799. doi:10.1111/accel.12799
- 627 44. Macdonald-Dunlop E, Taba N, Klarić L, et al. A catalogue of omics biological ageing clocks  
628 reveals substantial commonality and associations with disease risk. *Aging.* 2022;14(2):623-659.  
629 doi:10.18632/aging.203847
- 630 45. van den Akker EB, Trompet S, Barkey Wolf JJH, et al. Metabolic Age Based on the BBMRI-NL <sup>1</sup> H-  
631 NMR Metabolomics Repository as Biomarker of Age-related Disease. *Circ Genom Precis Med.*  
632 2020;13(5):541-547. doi:10.1161/CIRCGEN.119.002610
- 633 46. Hertel J, Friedrich N, Wittfeld K, et al. Measuring Biological Age via Metabonomics: The  
634 Metabolic Age Score. *J Proteome Res.* 2016;15(2):400-410. doi:10.1021/acs.jproteome.5b00561
- 635 47. Berkelmans GFN, Read SH, Gudbjörnsdóttir S, et al. Population median imputation was  
636 noninferior to complex approaches for imputing missing values in cardiovascular prediction  
637 models in clinical practice. *J Clin Epidemiol.* 2022;145:70-80. doi:10.1016/j.jclinepi.2022.01.011
- 638 48. Klemra P, Doubal S. A new approach to the concept and computation of biological age. *Mech*  
639 *Ageing Dev.* 2006;127(3):240-248. doi:10.1016/j.mad.2005.10.004
- 640 49. Olink Proteomics. *Data Normalization and Standardization.*; 2021. Accessed January 12, 2023.  
641 [https://www.olink.com/content/uploads/2021/09/olink-data-normalization-white-paper-](https://www.olink.com/content/uploads/2021/09/olink-data-normalization-white-paper-v2.0.pdf)  
642 [v2.0.pdf](https://www.olink.com/content/uploads/2021/09/olink-data-normalization-white-paper-v2.0.pdf)
- 643 50. Mathieu Bastian SHMJacomy. Bastian M., Heymann S., Jacomy M. (2009). Gephi: an open  
644 source software for exploring and manipulating networks. International AAAI Conference on  
645 Weblogs and Social Media.



- 646 51. Shannon P, Markiel A, Ozier O, et al. Cytoscape: A Software Environment for Integrated Models  
647 of Biomolecular Interaction Networks. *Genome Res.* 2003;13(11):2498-2504.  
648 doi:10.1101/gr.1239303
- 649 52. Weidner C, Lin Q, Koch C, et al. Aging of blood can be tracked by DNA methylation changes at  
650 just three CpG sites. *Genome Biol.* 2014;15(2):R24. doi:10.1186/gb-2014-15-2-r24
- 651 53. Wright EM, Royston P. A Comparison of Statistical Methods for Age-related Reference Intervals.  
652 *J R Stat Soc Ser A Stat Soc.* 1997;160(1):47-69. <http://www.jstor.org/stable/2983379>
- 653 54. BURRITT MF, SLOCKBOWER JM, FORSMAN RW, OFFORD KP, BERGSTRALH EJ, SMITHSON WA.  
654 Pediatric Reference Intervals for 19 Biologic Variables in Healthy Children. *Mayo Clin Proc.*  
655 1990;65(3):329-336. doi:10.1016/S0025-6196(12)62533-6
- 656 55. L. Blackburn H, Schroeder B, Turner C, D. Shriver C, L. Ellsworth D, E. Ellsworth R. Management  
657 of Incidental Findings in the Era of Next-generation Sequencing. *Curr Genomics.*  
658 2015;16(3):159-174. doi:10.2174/1389202916666150317232930
- 659 56. Rutledge J, Oh H, Wyss-Coray T. Measuring biological age using omics data. *Nat Rev Genet.*  
660 2022;23(12):715-727. doi:10.1038/s41576-022-00511-7
- 661 57. Karczewski KJ, Snyder MP. Integrative omics for health and disease. *Nat Rev Genet.*  
662 2018;19(5):299-310. doi:10.1038/nrg.2018.4
- 663 58. Pusparum M, Ertaylan G, Thas O. From population to subject-specific reference intervals.  
664 *Lecture Notes in Computer Science (including subseries Lecture Notes in Artificial Intelligence*  
665 *and Lecture Notes in Bioinformatics).* 2020;12140 LNCS:468-482. doi:10.1007/978-3-030-50423-  
666 6\_35/FIGURES/7
- 667 59. Pusparum M, Ertaylan G, Thas O. Individual reference intervals for personalised interpretation  
668 of clinical and metabolomics measurements. *J Biomed Inform.* 2022;131:104111.  
669 doi:10.1016/j.jbi.2022.104111
- 670