

**Supplementary Information for:**

**Dynamic Clinical Success Rates for Drugs in the 21st Century**

Ying Zhou<sup>1,†</sup>, Yintao Zhang<sup>1,†</sup>, Zhen Chen<sup>1,†</sup>, Shijie Huang<sup>1</sup>, Yinghong Li<sup>1</sup>, Jianbo Fu<sup>2</sup>,  
Hongning Zhang<sup>1</sup>, Donghai Zhao<sup>1</sup>, Xichen Lian<sup>1</sup>, Yuan Zhou<sup>1</sup>, Xinyi Shen<sup>3</sup>, Yunqing Qiu<sup>1</sup>,  
Lianyi Han<sup>4</sup>, Feng Zhu<sup>1,\*</sup>

<sup>1</sup> College of Pharmaceutical Sciences, Zhejiang University, Hangzhou 310058, China.

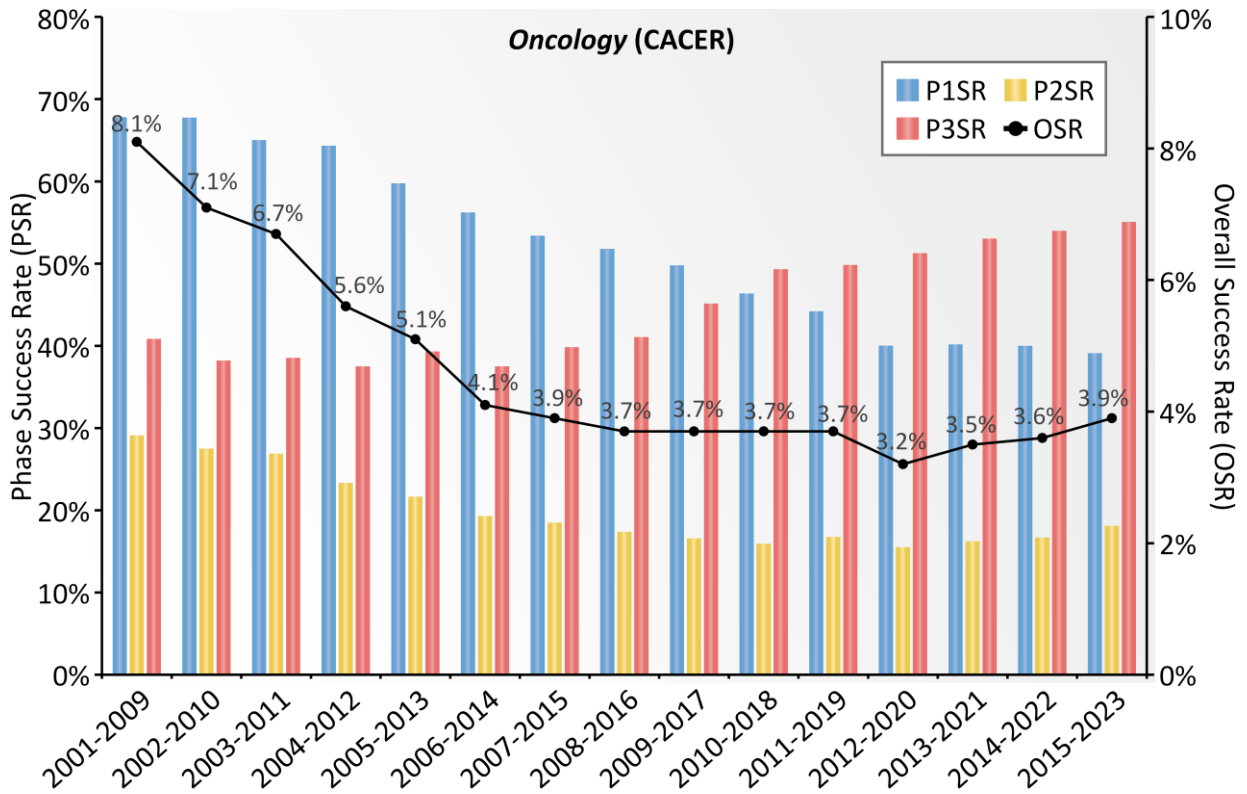
<sup>2</sup> Centre for Clinical Research, Helmholtz Centre for Infection Research, Hannover 30625, Germany.

<sup>3</sup> Yale School of Public Health, Yale University, New Haven 06510, United States.

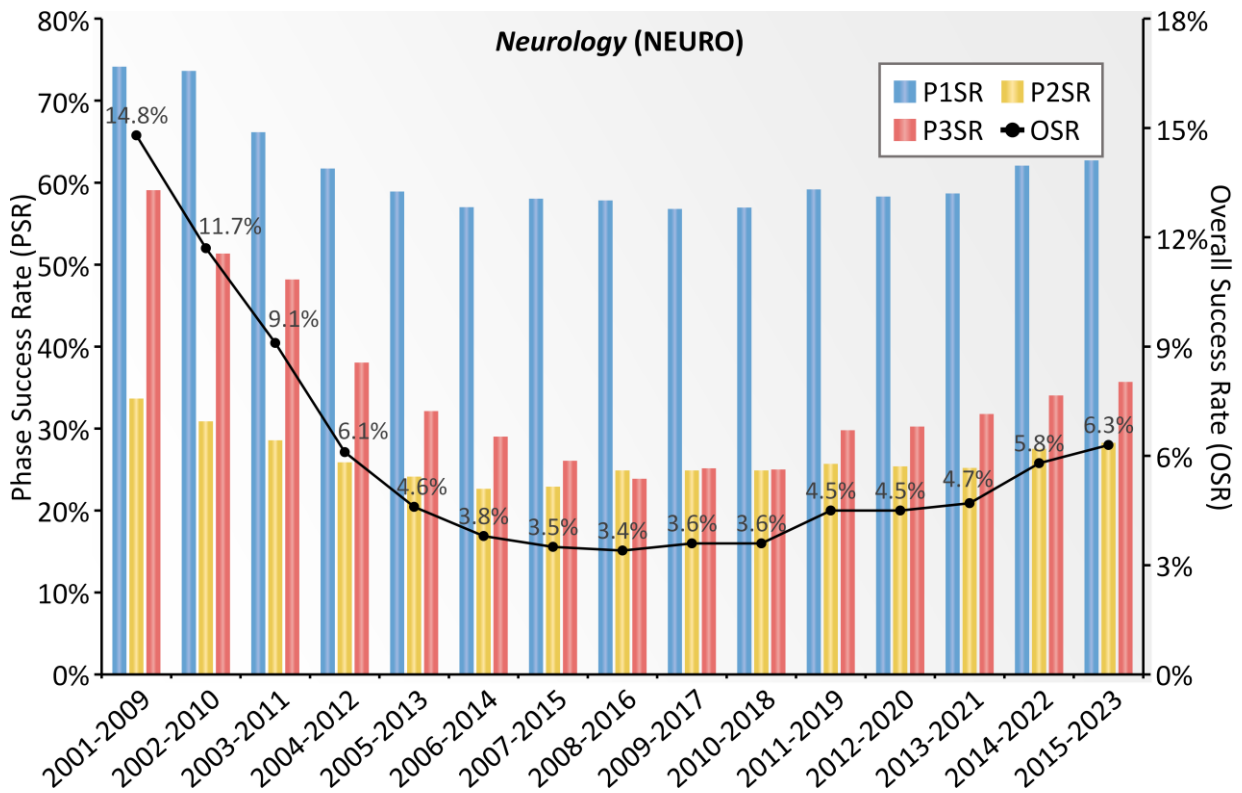
<sup>4</sup> Greater Bay Area Institute of Precision Medicine, Fudan University, Shanghai 315211, China.

\*Corresponding to Prof. Feng Zhu, Email: [zhufeng@zju.edu.cn](mailto:zhufeng@zju.edu.cn)

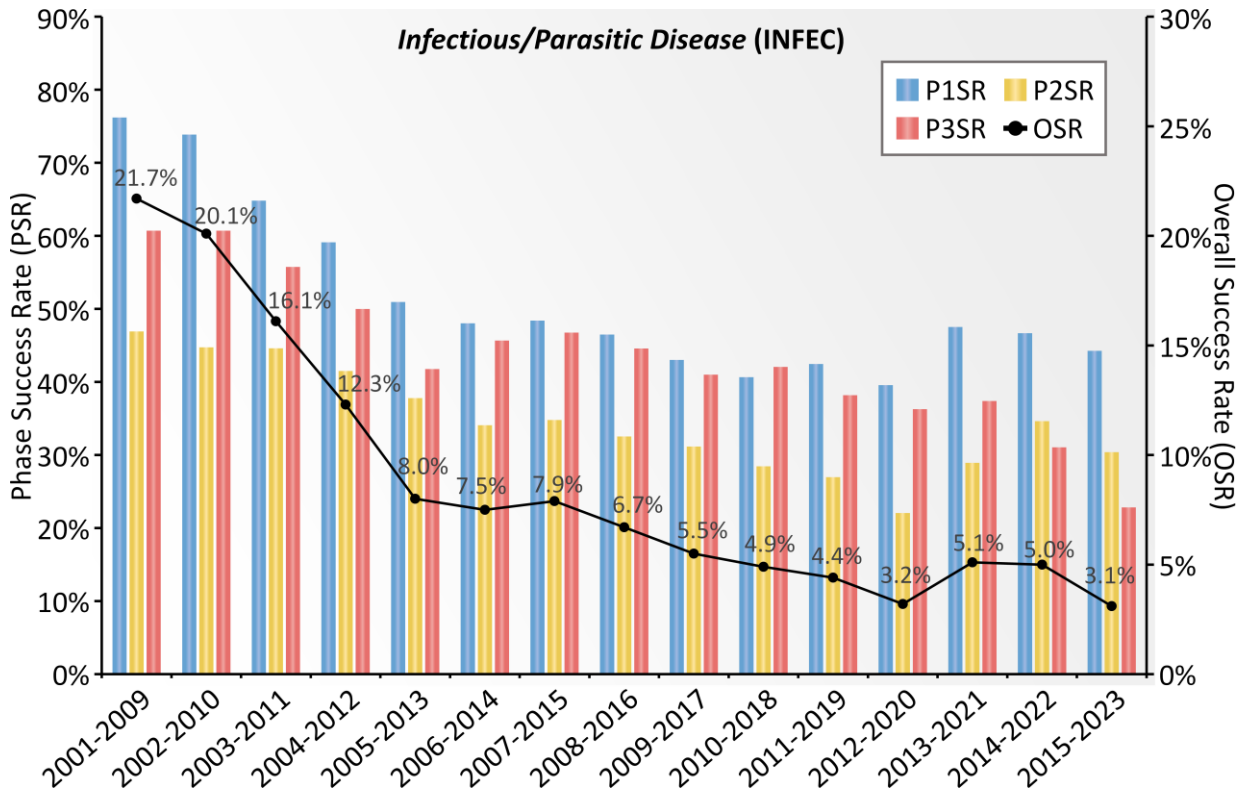
†These authors contributed equally: Ying Zhou, Yintao Zhang, Zhen Chen.



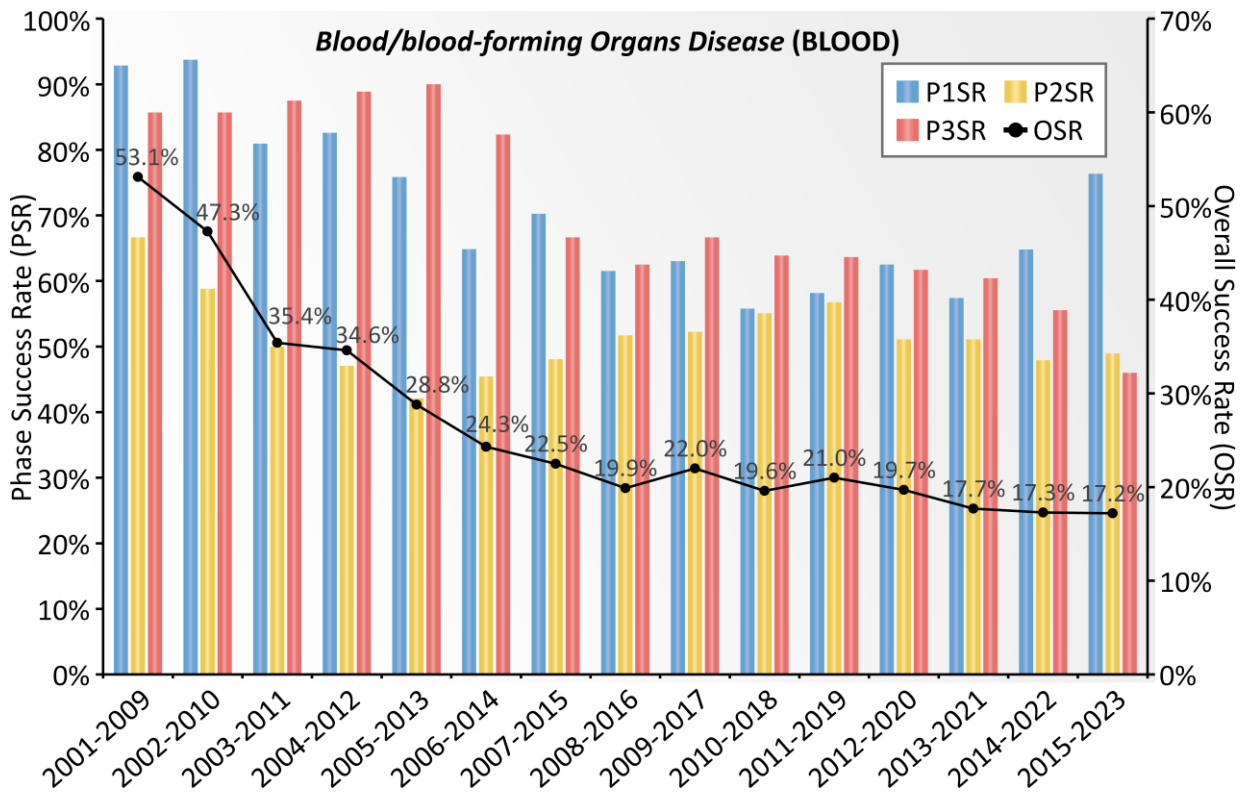
**Supplementary Figure S1.** The dynamic *clinical success rate* (ClinSR) evaluated based on the *CTPs of oncology (CACER)* collected for this study. A nine-year time-window was adopted here to facilitate the assessments of ClinSRs, which provided a drug adequate period of time to reach its final fate, and a total of fifteen time-windows (from 2001-2009 to 2015-2023, inclusive) were then assessed. The *phase success rates* (PSRs) of P1SR, P2SR and P3SR were shown using bars in blue, yellow and red, respectively. The dark line gave the dynamic variation in *overall success rate* (OSR). P1SR: Phase 1 success rate; P2SR: Phase 2 success rate; P3SR: Phase 3 success rate.



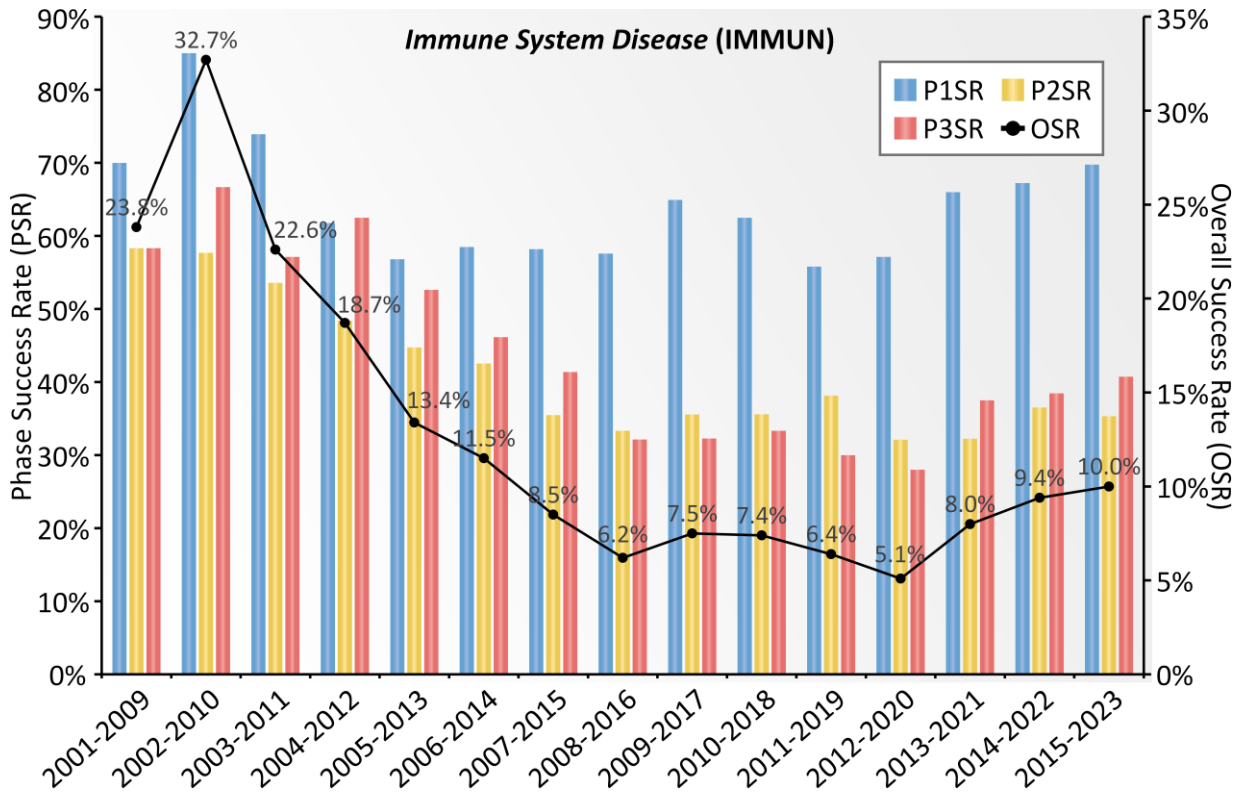
**Supplementary Figure S2.** Dynamic *clinical success rate* (ClinSR) assessed using the CTPs of *neurological disease* (NEURO) collected by this study. A nine-year time-window was used here to facilitate the assessments of ClinSRs, which provided a drug adequate period of time to reach its final fate, and a total of fifteen time-windows (from 2001-2009 to 2015-2023, inclusive) were then assessed. The *phase success rates* (PSRs) of P1SR, P2SR and P3SR were shown using bars in blue, yellow and red, respectively. The dark line gave the dynamic variation in *overall success rate* (OSR). P1SR: Phase 1 success rate; P2SR: Phase 2 success rate; P3SR: Phase 3 success rate.



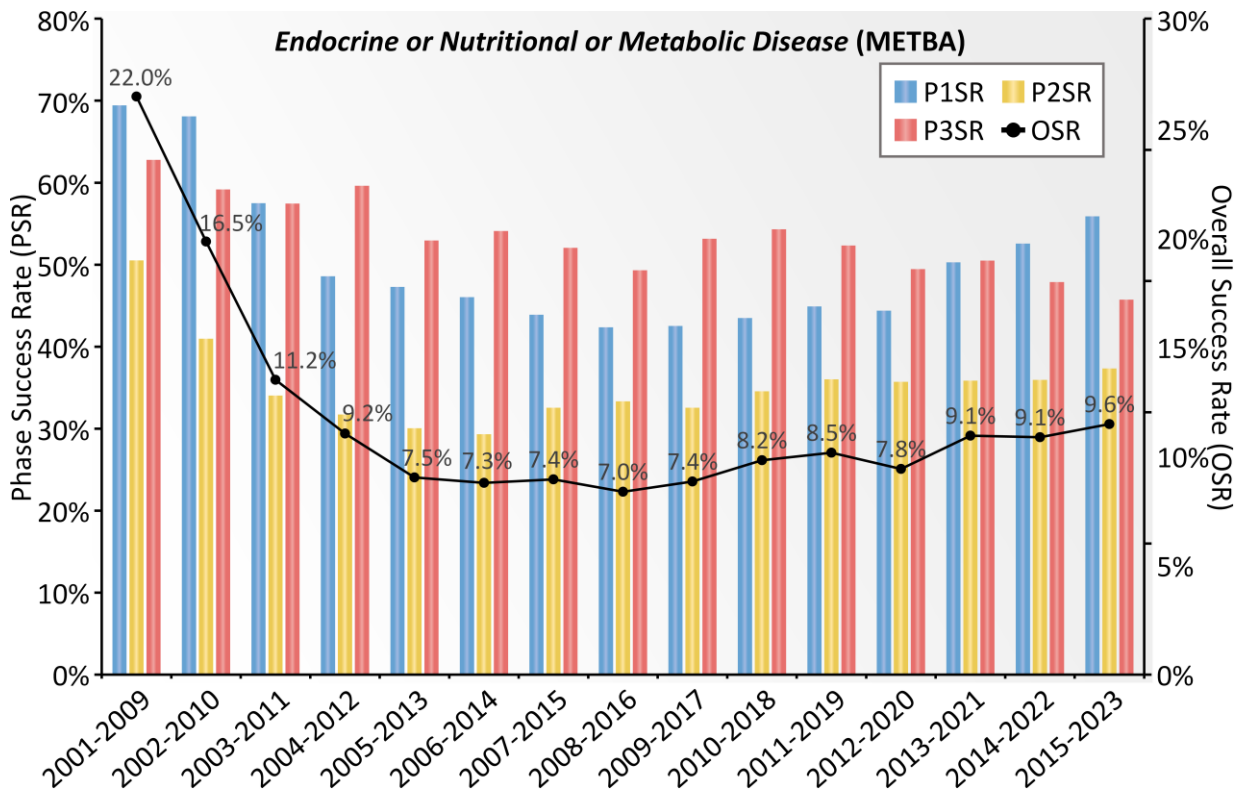
**Supplementary Figure S3.** Dynamic *clinical success rate* (ClinSR) assessed using the CTPs of *infectious/parasitic disease* (INFEC) collected for this study. A nine-year time-window was used to facilitate the assessments of ClinSRs, which provided a drug adequate period of time to reach its final fate, and a total of fifteen time-windows (from 2001-2009 to 2015-2023, inclusive) were then assessed. The *phase success rates* (PSRs) of P1SR, P2SR and P3SR were shown using bars in blue, yellow and red, respectively. The dark line gave the dynamic variation in *overall success rate* (OSR). P1SR: Phase 1 success rate; P2SR: Phase 2 success rate; P3SR: Phase 3 success rate.



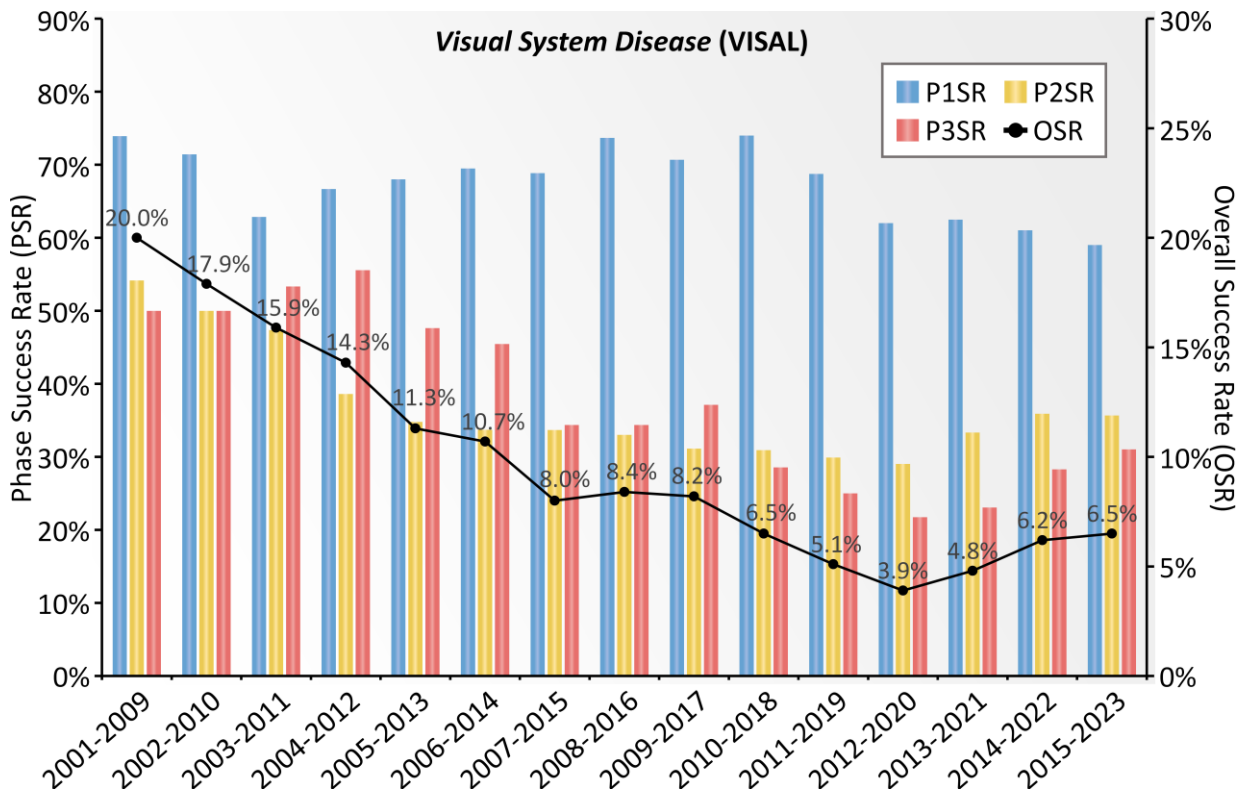
**Supplementary Figure S4.** Dynamic *clinical success rate* (ClinSR) assessed using the CTPs of *blood/blood-forming organs disease* (BLOOD) in this study. A nine-year time-window was used to facilitate the assessments of ClinSRs, which provided a drug adequate period of time to reach its final fate, and a total of fifteen time-windows (from 2001-2009 to 2015-2023, inclusive) were then assessed. The *phase success rates* (PSRs) of P1SR, P2SR and P3SR were shown using bars in blue, yellow and red, respectively. The dark line gave the dynamic variation in *overall success rate* (OSR). P1SR: Phase 1 success rate; P2SR: Phase 2 success rate; P3SR: Phase 3 success rate.



**Supplementary Figure S5.** Dynamic *clinical success rate* (ClinSR) assessed using the CTPs of *immune system disease* (IMMNU) collected by this study. A nine-year time-window was adopted to facilitate the assessments of ClinSRs, which provided a drug adequate period of time to reach its final fate, and a total of fifteen time-windows (from 2001-2009 to 2015-2023, inclusive) were then assessed. The *phase success rates* (PSRs) of P1SR, P2SR and P3SR were shown using bars in blue, yellow and red, respectively. The dark line gave the dynamic variation in *overall success rate* (OSR). P1SR: Phase 1 success rate; P2SR: Phase 2 success rate; P3SR: Phase 3 success rate.

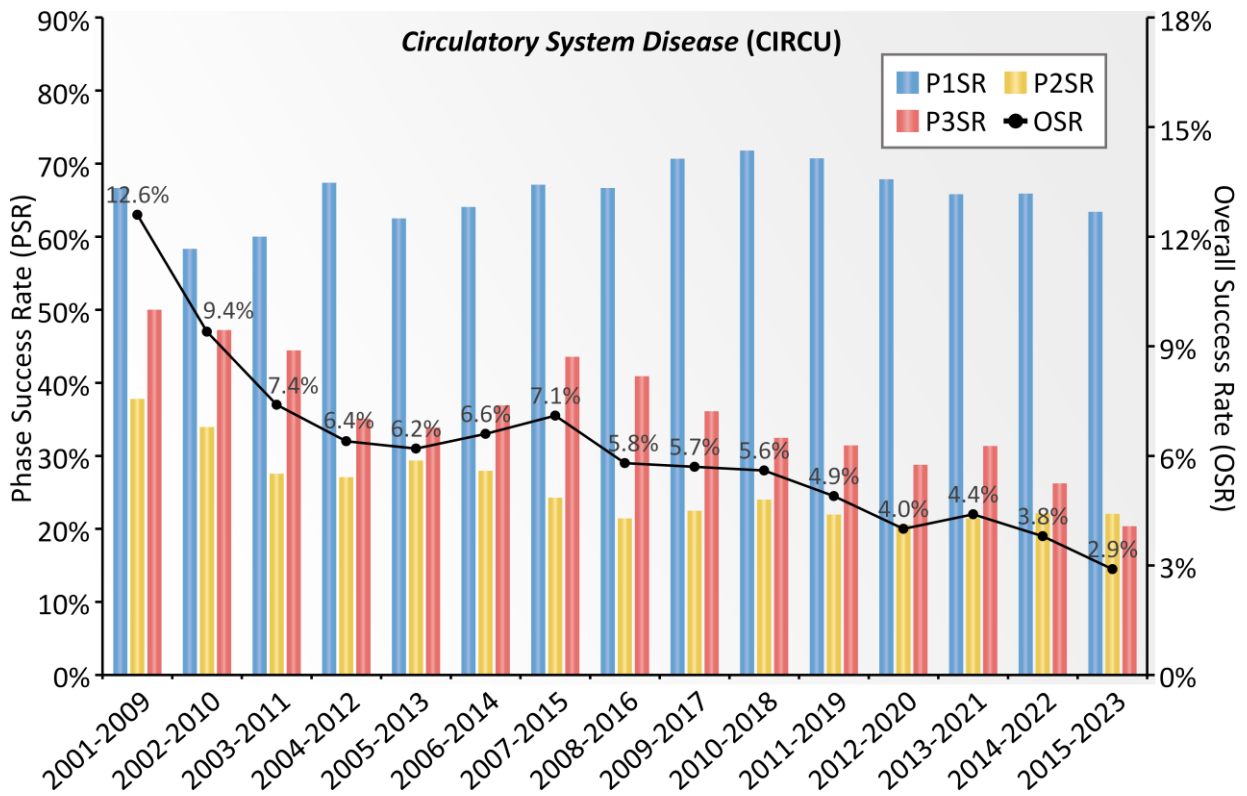


**Supplementary Figure S6.** Dynamic *clinical success rate* (ClinSR) assessed using the CTPs of *endocrine, nutritional or metabolic disease* (METAB). A nine-year time-window was used here to facilitate the assessments of ClinSRs, which provided a drug adequate period of time to reach its final fate, and a total of fifteen time-windows (from 2001-2009 to 2015-2023, inclusive) were then assessed. The *phase success rates* (PSRs) of P1SR, P2SR and P3SR were shown using bars in blue, yellow and red, respectively. The dark line gave the dynamic variation in *overall success rate* (OSR). P1SR: Phase 1 success rate; P2SR: Phase 2 success rate; P3SR: Phase 3 success rate.

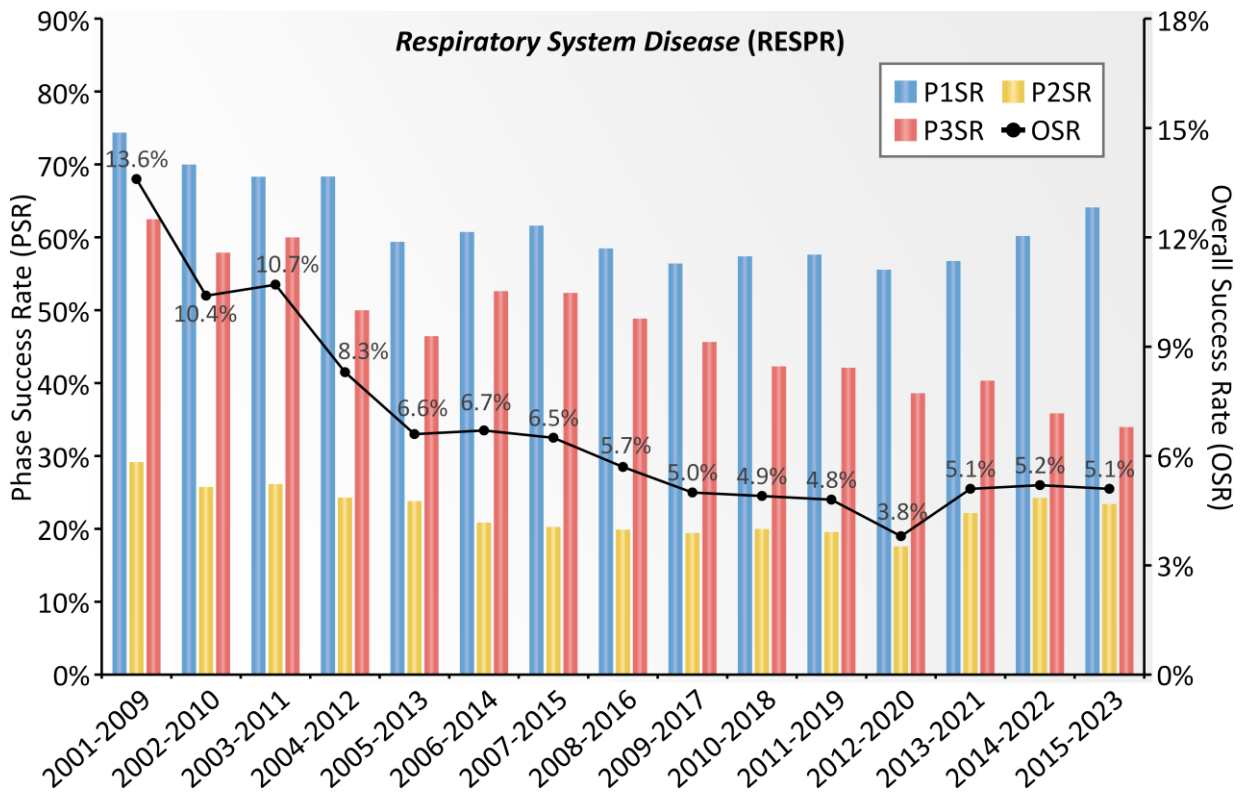


**Supplementary Figure S7.** Dynamic *clinical success rate* (ClinSR) assessed using the CTPs of *visual system disease* (VISAL) collected for this study. A nine-year time-window was used here to facilitate the assessments of ClinSRs, which provided a drug adequate period of time to reach its final fate, and a total of fifteen time-windows (from 2001-2009 to 2015-2023, inclusive) were then assessed. The *phase success rates* (PSRs) of P1SR, P2SR and P3SR were shown using bars in blue, yellow and red, respectively. The dark line gave the dynamic variation in *overall success rate* (OSR). P1SR: Phase 1 success rate; P2SR: Phase 2 success rate; P3SR: Phase 3 success rate.

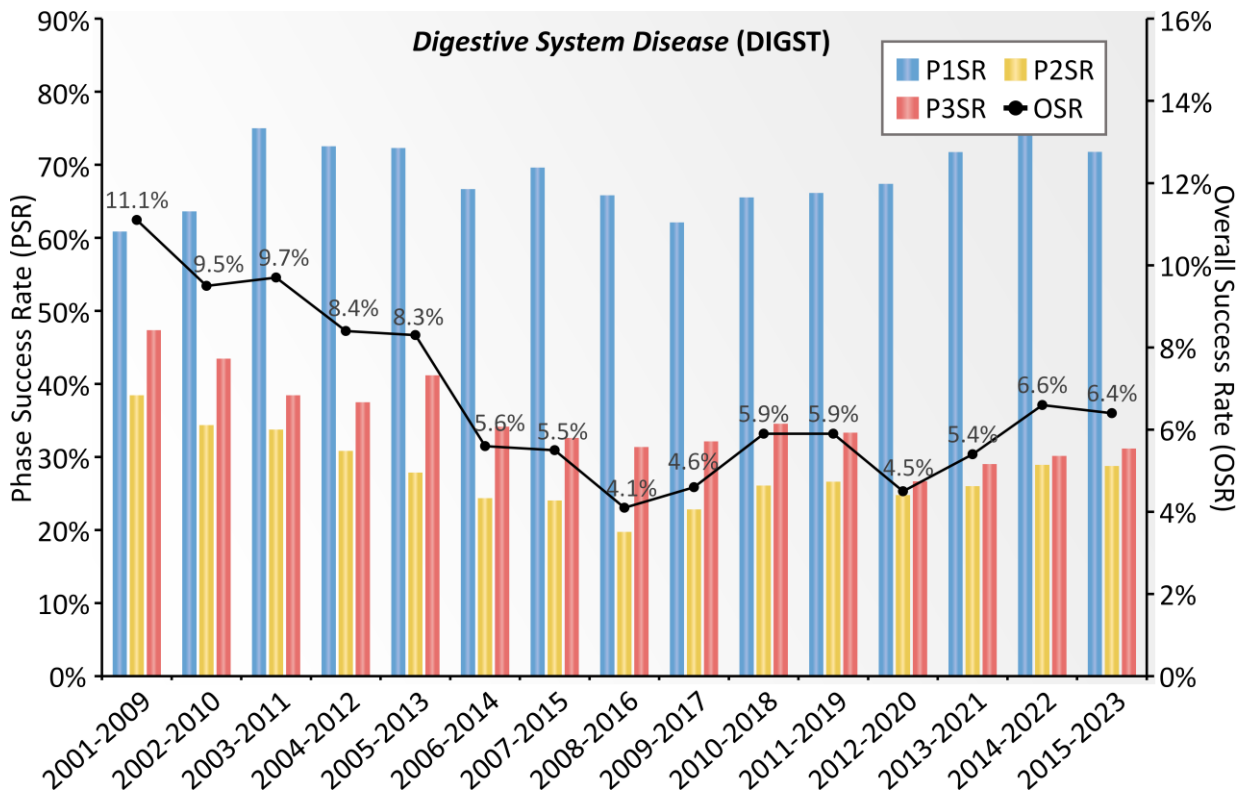




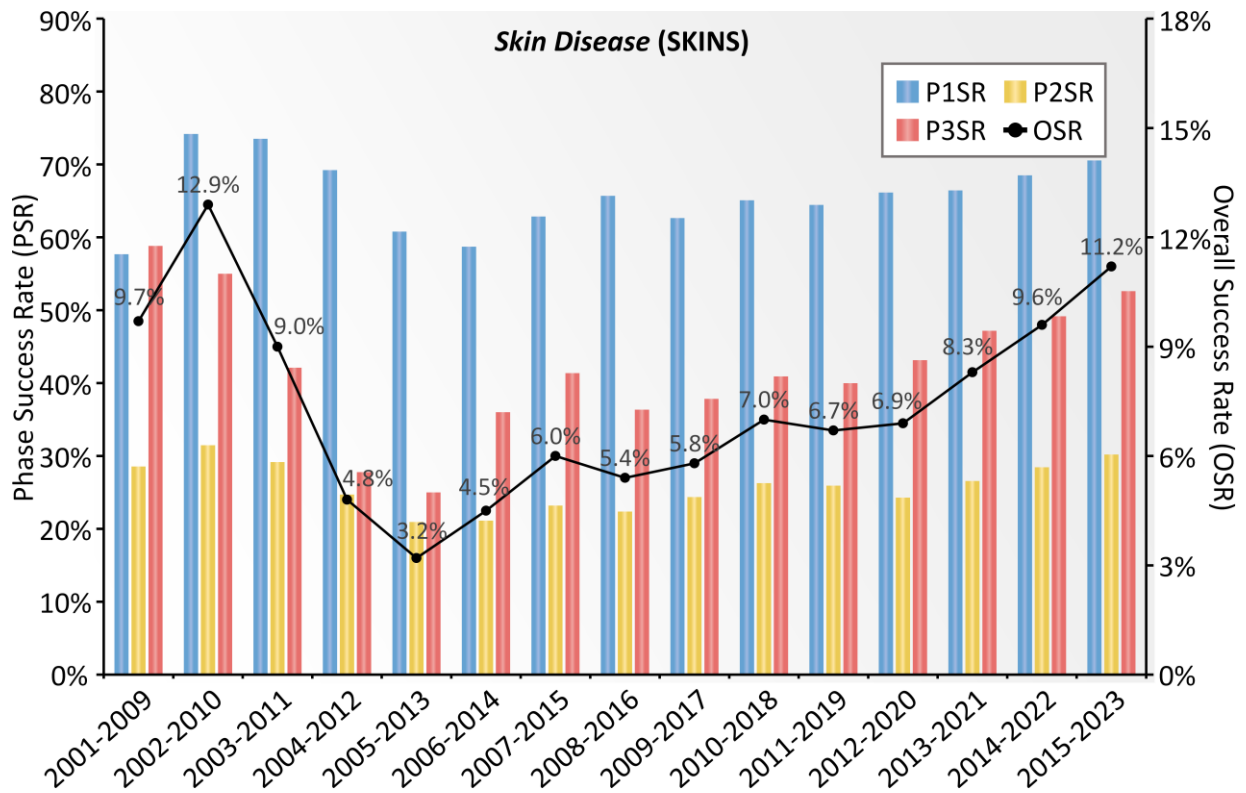
**Supplementary Figure S8.** Dynamic *clinical success rate* (ClinSR) assessed using the CTPs of *circulatory system disease* (CIRCU) collected for this study. A nine-year time-window was used to facilitate the assessments of ClinSRs, which provided a drug adequate period of time to reach its final fate, and a total of fifteen time-windows (from 2001-2009 to 2015-2023, inclusive) were then assessed. The *phase success rates* (PSRs) of P1SR, P2SR and P3SR were shown using bars in blue, yellow and red, respectively. The dark line gave the dynamic variation in *overall success rate* (OSR). P1SR: Phase 1 success rate; P2SR: Phase 2 success rate; P3SR: Phase 3 success rate.



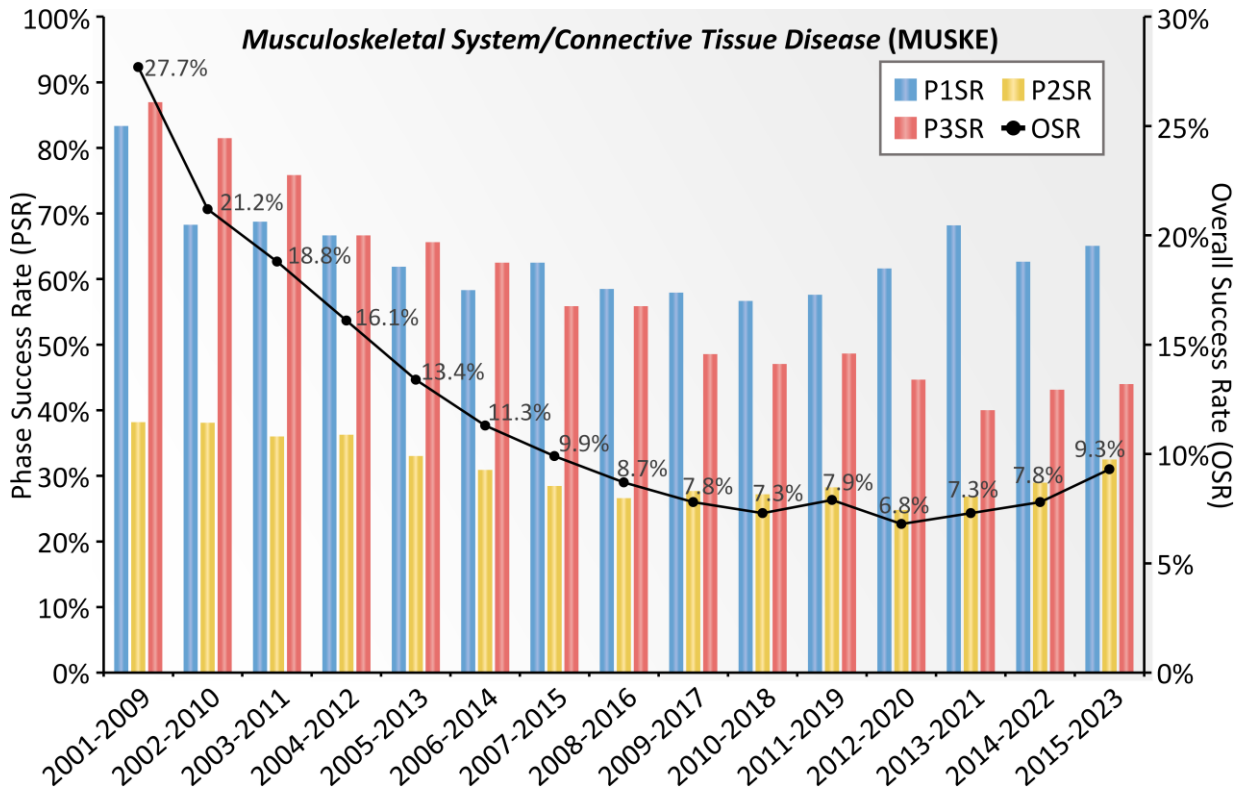
**Supplementary Figure S9.** Dynamic *clinical success rate* (ClinSR) assessed using the CTPs of *respiratory system disease* (RESPR) collected for this study. A nine-year time-window was used to facilitate the assessments of ClinSRs, which provided a drug adequate period of time to reach its final fate, and a total of fifteen time-windows (from 2001-2009 to 2015-2023, inclusive) were then assessed. The *phase success rates* (PSRs) of P1SR, P2SR and P3SR were shown using bars in blue, yellow and red, respectively. The dark line gave the dynamic variation in *overall success rate* (OSR). P1SR: Phase 1 success rate; P2SR: Phase 2 success rate; P3SR: Phase 3 success rate.



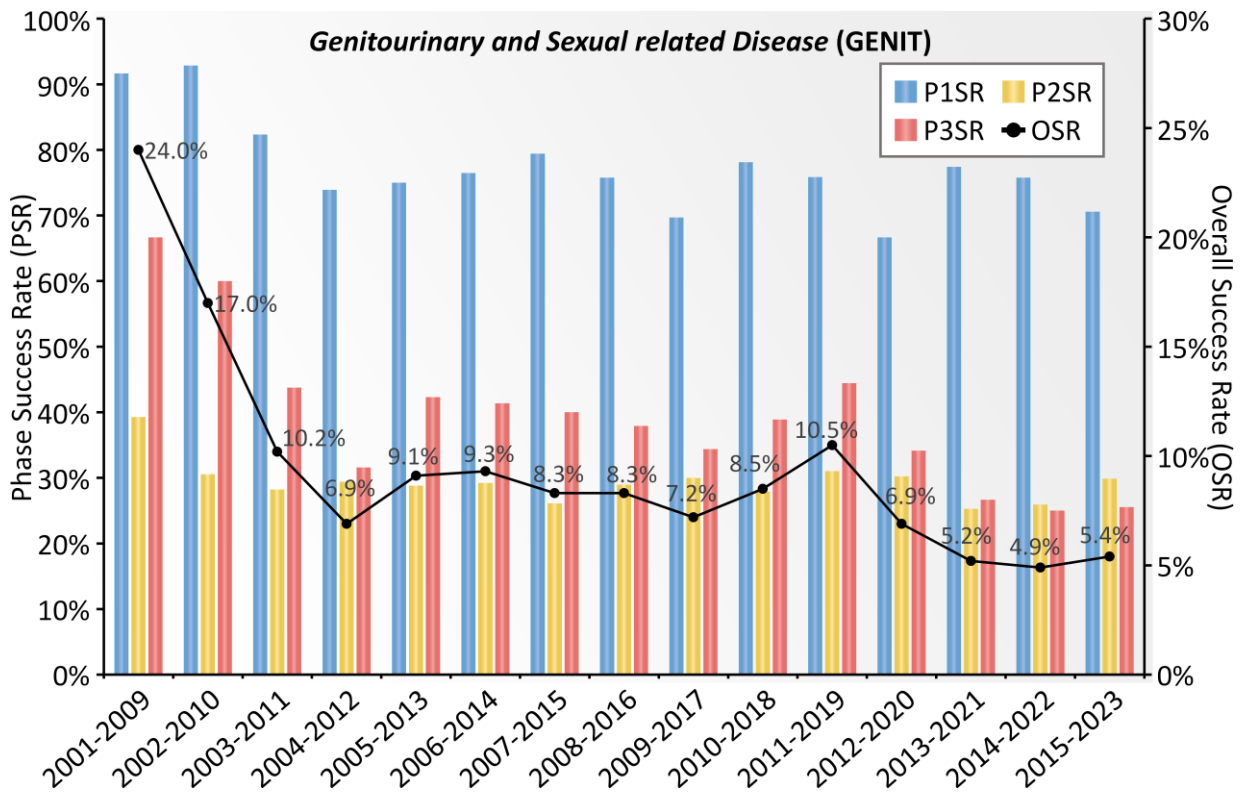
**Supplementary Figure S10.** Dynamic *clinical success rate* (ClinSR) evaluated using the CTPs of *digestive system disease* (DIGST) collected for this study. A nine-year time-window was used to facilitate the assessments of ClinSRs, which provided a drug adequate period of time to reach its final fate, and a total of fifteen time-windows (from 2001-2009 to 2015-2023, inclusive) were then assessed. The *phase success rates* (PSRs) of P1SR, P2SR and P3SR were shown using bars in blue, yellow and red, respectively. The dark line gave the dynamic variation in *overall success rate* (OSR). P1SR: Phase 1 success rate; P2SR: Phase 2 success rate; P3SR: Phase 3 success rate.



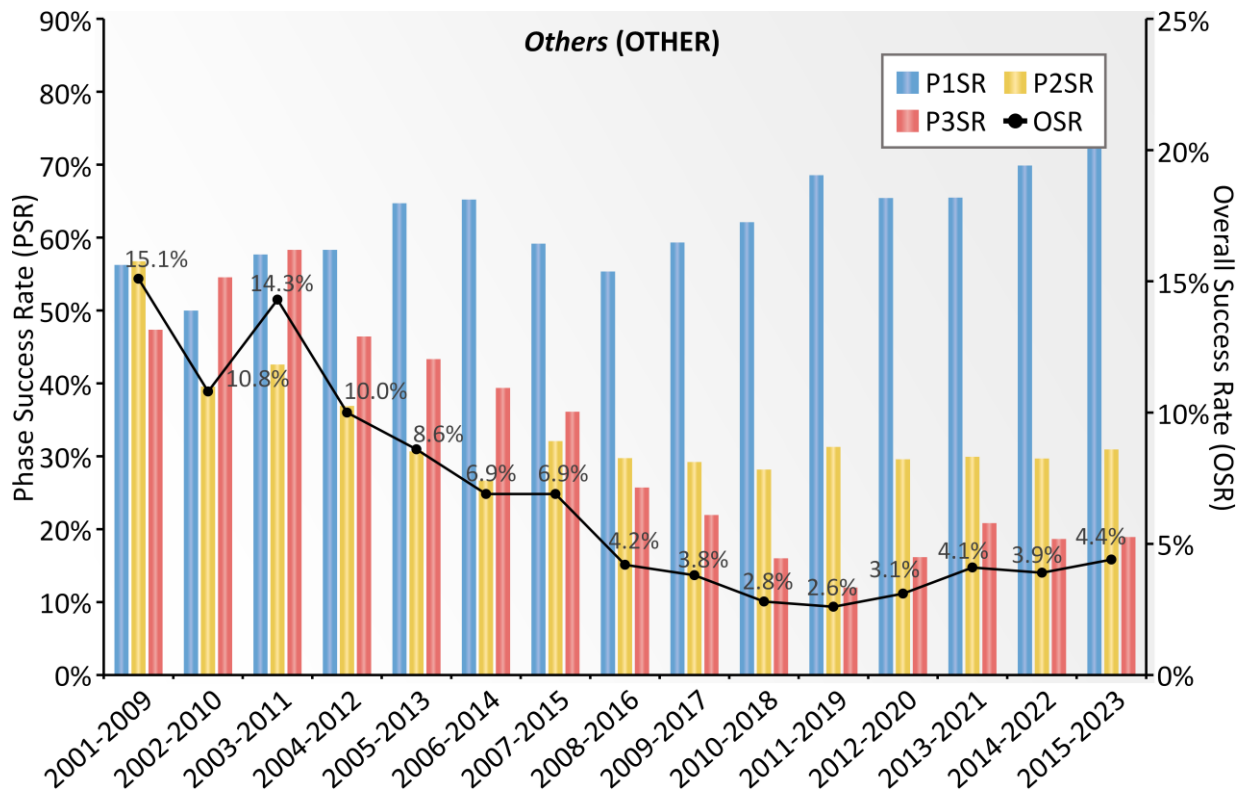
**Supplementary Figure S11.** The dynamic *clinical success rate* (ClinSR) assessed based on the CTPs of *skin disease (SKINS)* gathered in this study. A nine-year time-window was adopted here to facilitate the assessments of ClinSRs, which provided a drug adequate period of time to reach its final fate, and a total of fifteen time-windows (from 2001-2009 to 2015-2023, inclusive) were then assessed. The *phase success rates* (PSRs) of P1SR, P2SR and P3SR were shown using bars in blue, yellow and red, respectively. The dark line gave the dynamic variation in *overall success rate* (OSR). P1SR: Phase 1 success rate; P2SR: Phase 2 success rate; P3SR: Phase 3 success rate.



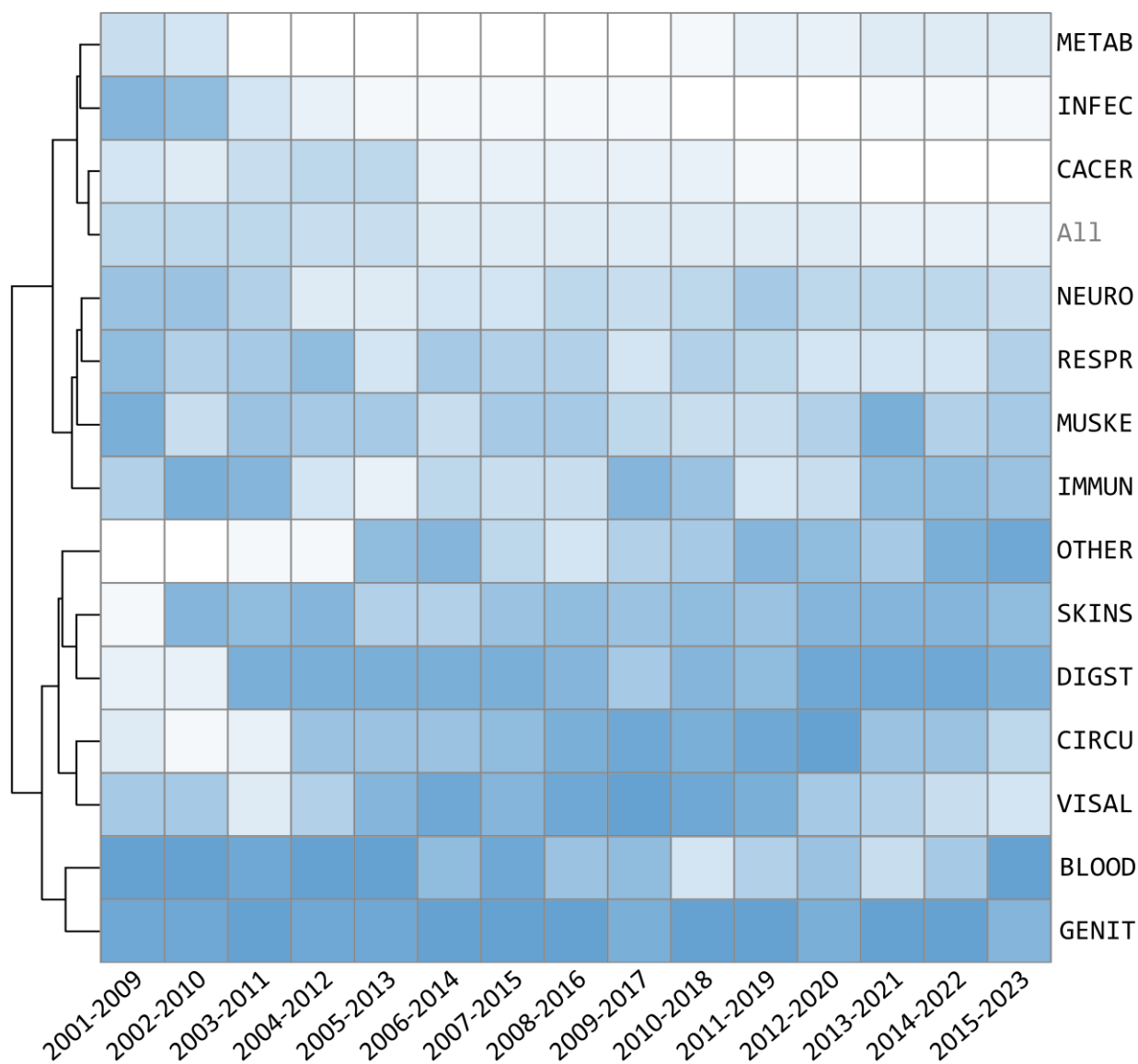
**Supplementary Figure S12.** Dynamic *clinical success rate* (ClinSR) measured by the CTPs of *musculoskeletal system/connective tissue disease* (MUSKE). A nine-year time-window was used to facilitate the assessments of ClinSRs, which provided a drug adequate period of time to reach its final fate, and a total of fifteen time-windows (from 2001-2009 to 2015-2023, inclusive) were then assessed. The *phase success rates* (PSRs) of P1SR, P2SR and P3SR were shown using bars in blue, yellow and red, respectively. The dark line gave the dynamic variation in *overall success rate* (OSR). P1SR: Phase 1 success rate; P2SR: Phase 2 success rate; P3SR: Phase 3 success rate.



**Supplementary Figure S13.** Dynamic *clinical success rate* (ClinSR) measured by the CTPs of *genitourinary and sexual related disease* (GENIT). A nine-year time-window was adopted here to facilitate the assessments of ClinSRs, which provided a drug adequate period of time to reach its final fate, and a total of fifteen time-windows (from 2001-2009 to 2015-2023, inclusive) were then assessed. The *phase success rates* (PSRs) of P1SR, P2SR and P3SR were shown using bars in blue, yellow and red, respectively. The dark line gave the dynamic variation in *overall success rate* (OSR). P1SR: Phase 1 success rate; P2SR: Phase 2 success rate; P3SR: Phase 3 success rate.

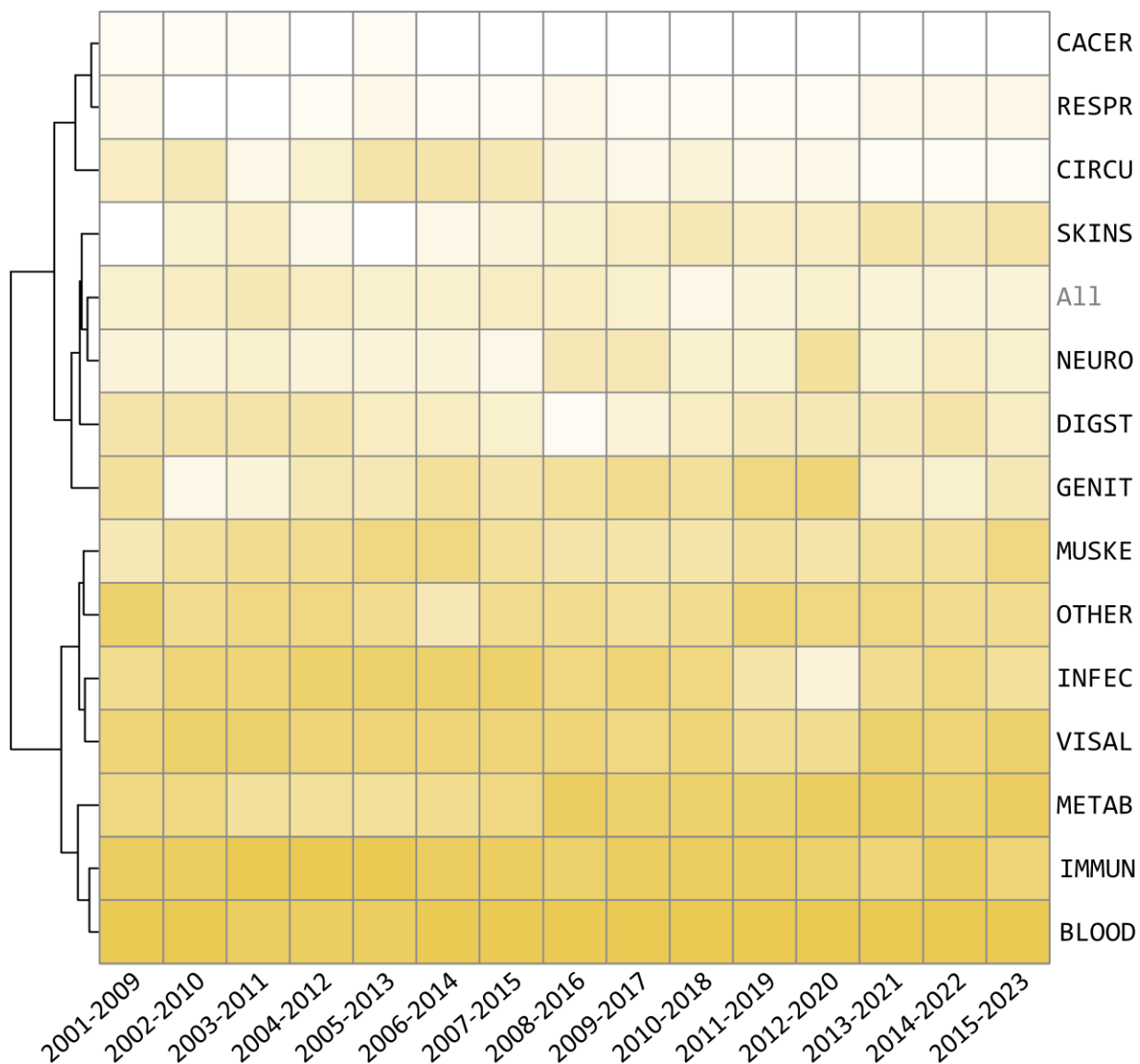


**Supplementary Figure S14.** The dynamic *clinical success rate* (ClinSR) measured by the CTPs of *other diseases* (OTHER) collected for this study. A nine-year time-window was adopted here to facilitate the assessments of ClinSRs, which provided a drug adequate period of time to reach its final fate, and a total of fifteen time-windows (from 2001-2009 to 2015-2023, inclusive) were then assessed. The *phase success rates* (PSRs) of P1SR, P2SR and P3SR were shown using bars in blue, yellow and red, respectively. The dark line gave the dynamic variation in *overall success rate* (OSR). P1SR: Phase 1 success rate; P2SR: Phase 2 success rate; P3SR: Phase 3 success rate.

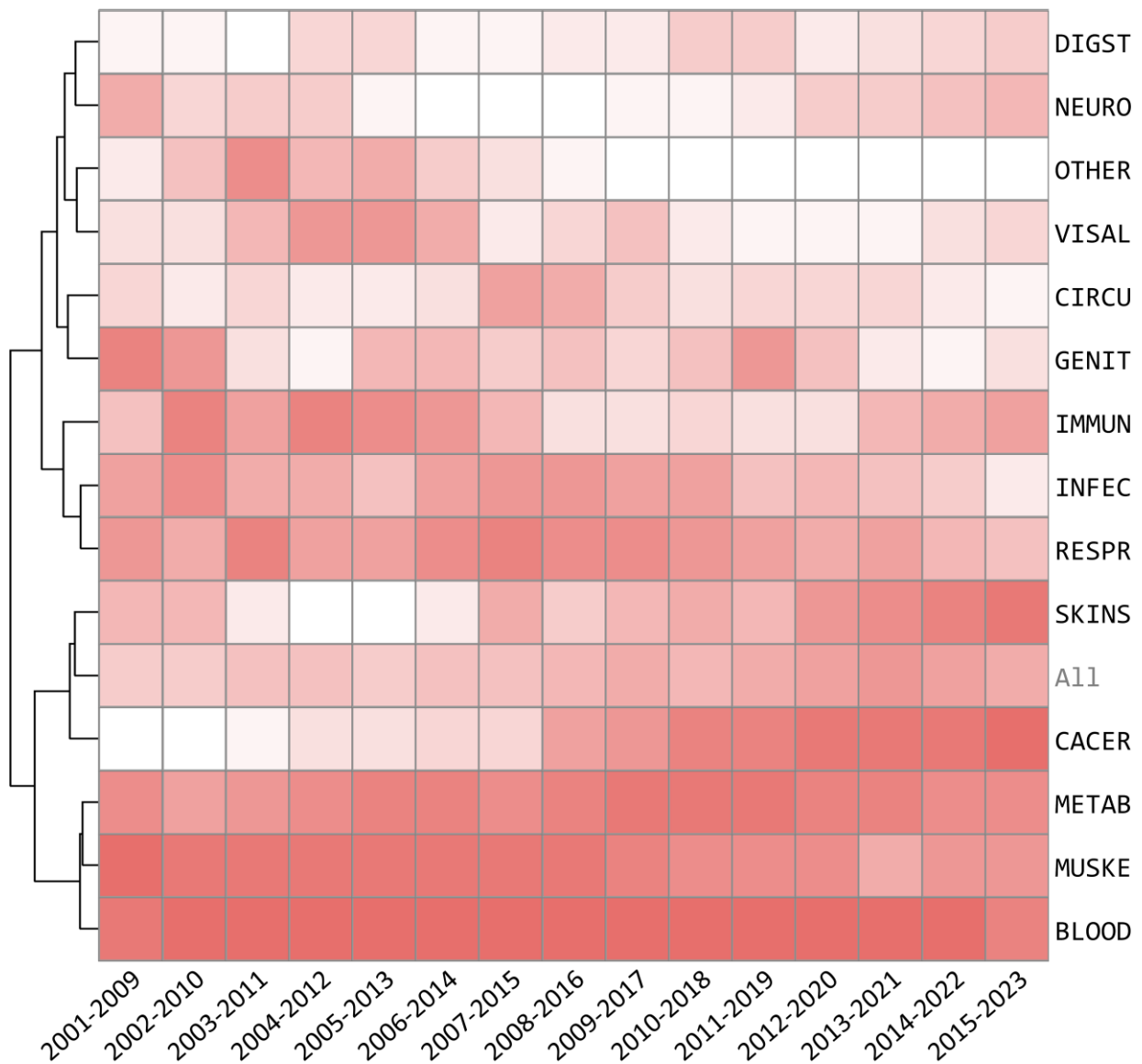


**Supplementary Figure S15.** Hierarchical clustering of fifteen different disease classes based on their *phase 1 success rate (PISR)* across fifteen consecutive time-windows. The darker the blue color, the higher the success rate of clinical drug development in the corresponding time-window and the corresponding indication. All: all disease indication; INFEC: infectious/parasitic disease; BLOOD: blood/blood-forming organs disease; CACER: oncology; CIRCUL: circulatory system disease; DIGST: digestive system disease; SKINS: skin disease; METAB: endocrine, nutritional or metabolic disease; RESPR: respiratory system disease; MUSKE: musculoskeletal system and connective tissue disease; GENIT: genitourinary and sexual related disease; NEURO: neurology; VISAL: visual system disease; IMMUN: immune system disease; OTHER: Other disease.

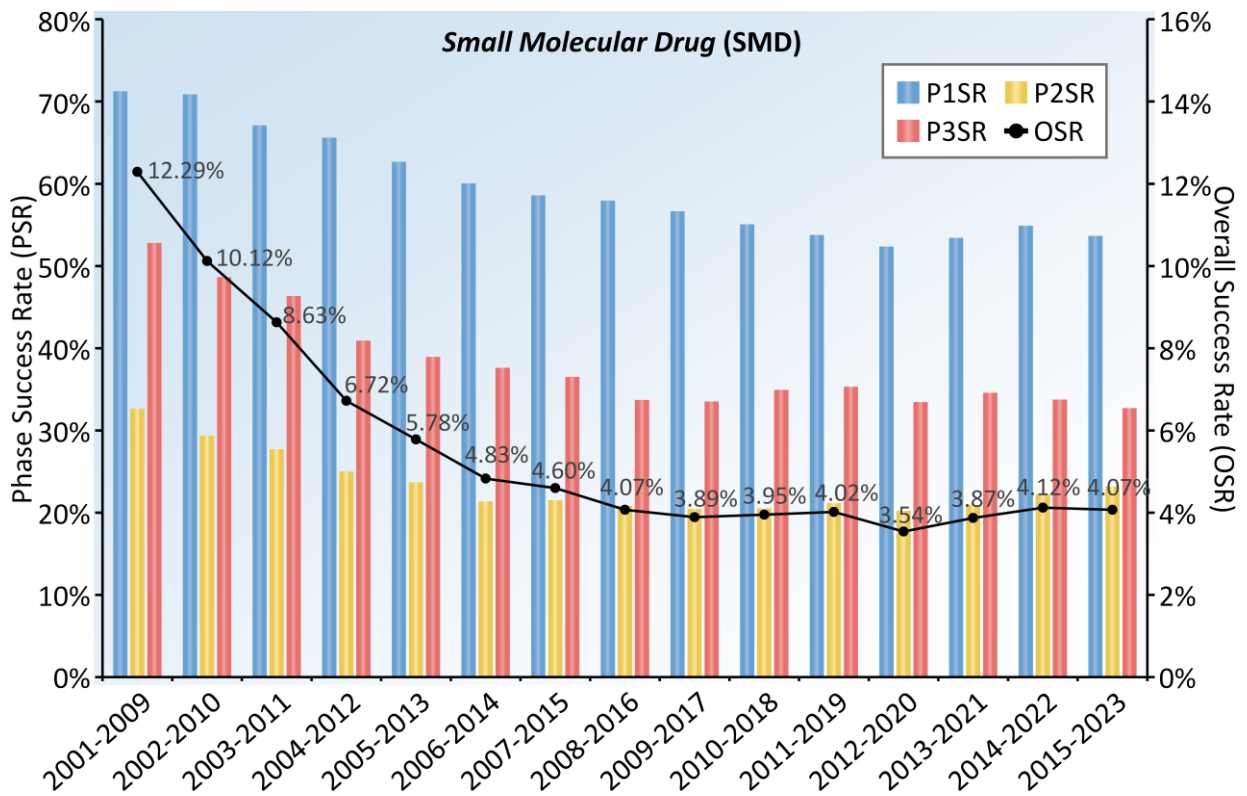




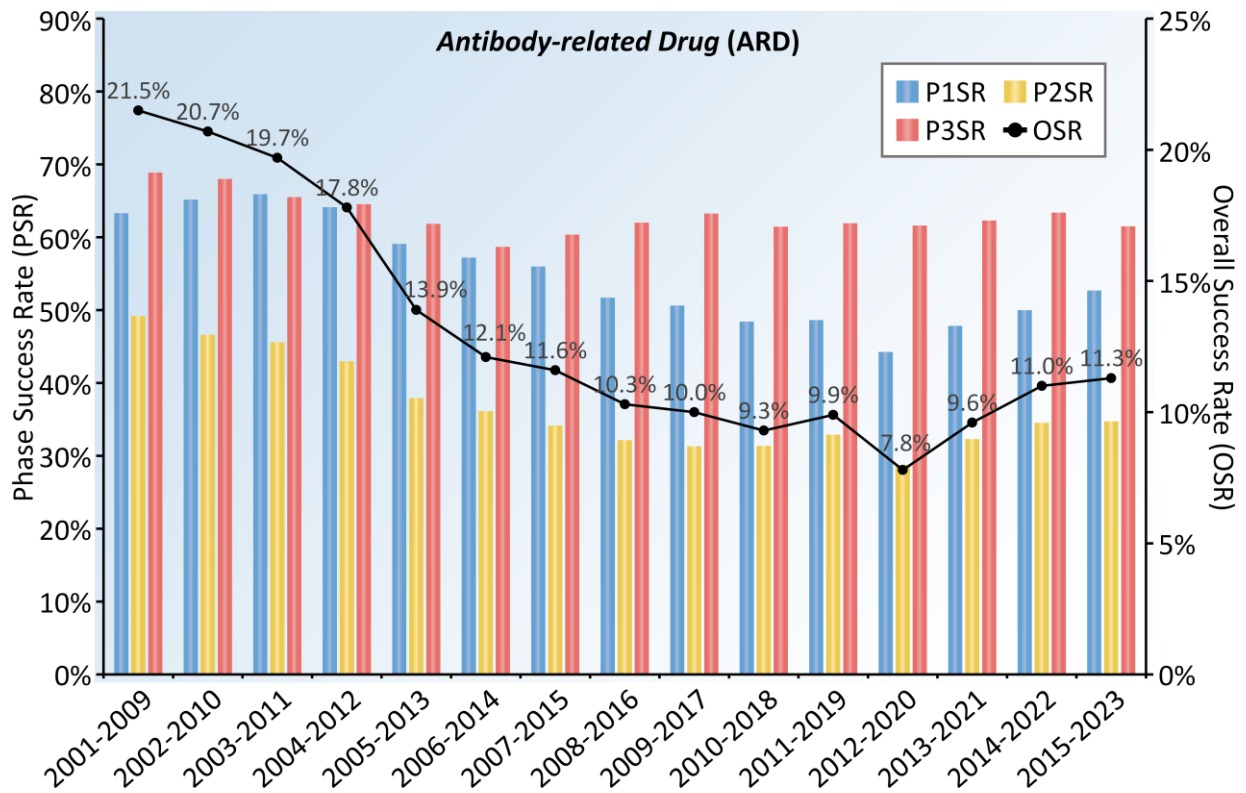
**Supplementary Figure S16.** Hierarchical clustering of fifteen different disease classes based on the *phase 2 success rate (P2SR)* across fifteen consecutive time-windows. The darker the yellow color, the higher the success rate of clinical drug development in the corresponding time-window and the corresponding indication. All: all disease indication; INFEC: infectious/parasitic disease; BLOOD: blood/blood-forming organs disease; CACER: oncology; CIRCU: circulatory system disease; DIGST: digestive system disease; SKINS: skin disease; METAB: endocrine, nutritional or metabolic disease; RESPR: respiratory system disease; MUSKE: musculoskeletal system and connective tissue disease; GENIT: genitourinary and sexual related disease; NEURO: neurology; VISAL: visual system disease; IMMUN: immune system disease; OTHER: Other disease.



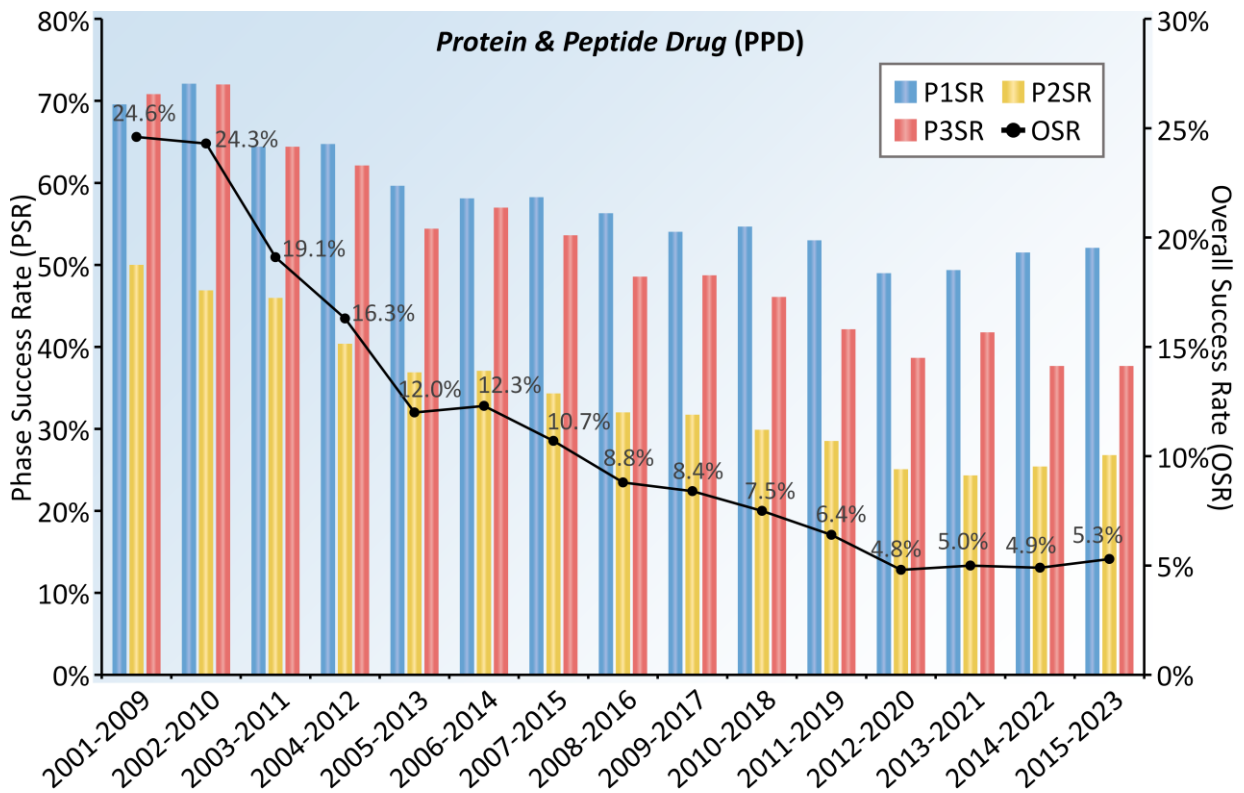
**Supplementary Figure S17.** Hierarchical clustering of fifteen different disease classes based on their *phase 3 success rate (P3SR)* across fifteen consecutive time-windows. The darker the red color, the higher the success rate of clinical drug development in the corresponding time-window and the corresponding indication. All: all disease indication; INFEC: infectious/parasitic disease; BLOOD: blood/blood-forming organs disease; CACER: oncology; CIRCU: circulatory system disease; DIGST: digestive system disease; SKINS: skin disease; METAB: endocrine, nutritional or metabolic disease; RESPR: respiratory system disease; MUSKE: musculoskeletal system and connective tissue disease; GENIT: genitourinary and sexual related disease; NEURO: neurology; VISAL: visual system disease; IMMUN: immune system disease; OTHER: Other disease.



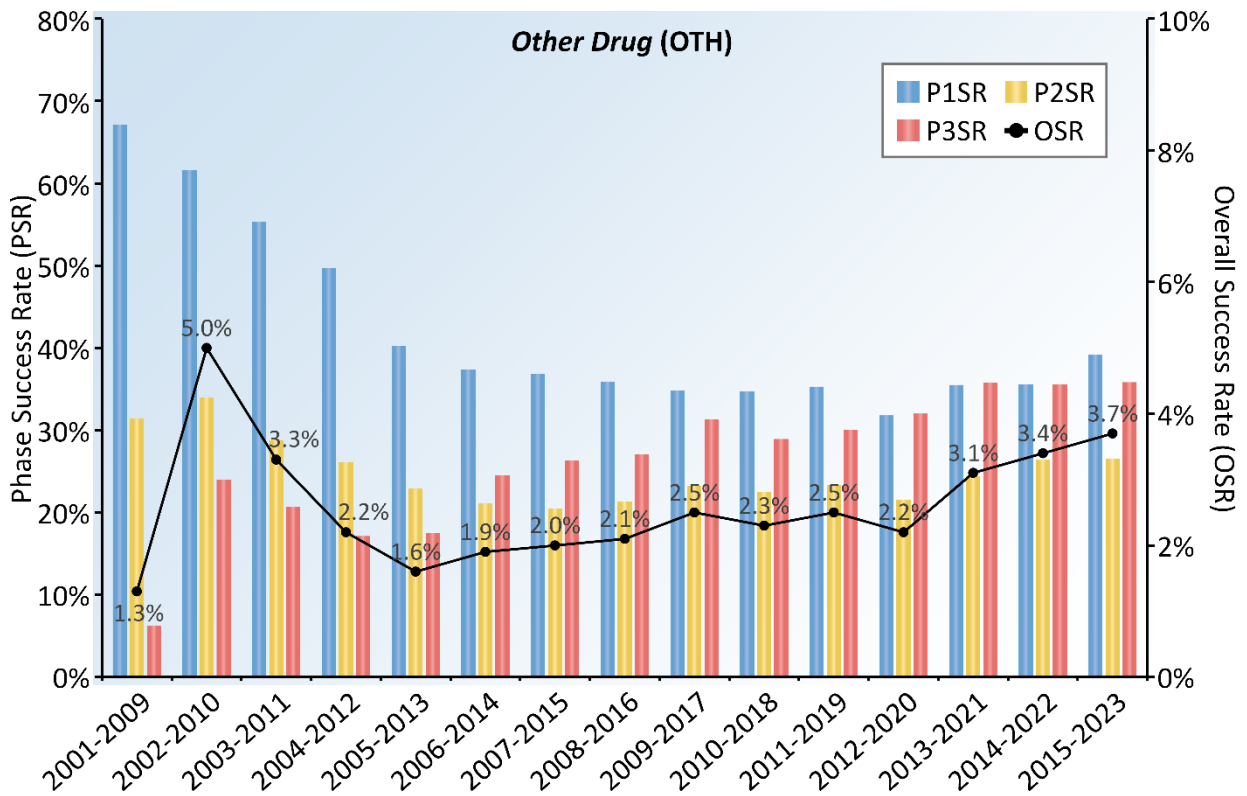
**Supplementary Figure S18.** The dynamic *clinical success rate* (ClinSR) measured by the CTPs of *small molecular drug* (SMD) collected for this study. A nine-year time-window was used here to facilitate the assessments of ClinSRs, which provided a drug adequate period of time to reach its final fate, and a total of fifteen time-windows (from 2001-2009 to 2015-2023, inclusive) were then assessed. The *phase success rates* (PSRs) of P1SR, P2SR and P3SR were shown using bars in blue, yellow and red, respectively. The dark line gave the dynamic variation in *overall success rate* (OSR). P1SR: Phase 1 success rate; P2SR: Phase 2 success rate; P3SR: Phase 3 success rate.



**Supplementary Figure S19.** The dynamic *clinical success rate* (ClinSR) measured by the CTPs of *antibody-related drug* (ARD) collected for this study. A nine-year time-window was used here to facilitate the assessments of ClinSRs, which provided a drug adequate period of time to reach its final fate, and a total of fifteen time-windows (from 2001-2009 to 2015-2023, inclusive) were then assessed. The *phase success rates* (PSRs) of P1SR, P2SR and P3SR were shown using bars in blue, yellow and red, respectively. The dark line gave the dynamic variation in *overall success rate* (OSR). P1SR: Phase 1 success rate; P2SR: Phase 2 success rate; P3SR: Phase 3 success rate.



**Supplementary Figure S20.** The dynamic *clinical success rate* (ClinSR) measured by the CTPs of *protein & peptide drug* (PPD) collected for this study. A nine-year time-window was used here to facilitate the assessments of ClinSRs, which provided a drug adequate period of time to reach its final fate, and a total of fifteen time-windows (from 2001-2009 to 2015-2023, inclusive) were then assessed. The *phase success rates* (PSRs) of P1SR, P2SR and P3SR were shown using bars in blue, yellow and red, respectively. The dark line gave the dynamic variation in *overall success rate* (OSR). P1SR: Phase 1 success rate; P2SR: Phase 2 success rate; P3SR: Phase 3 success rate.



**Supplementary Figure S21.** The dynamic *clinical success rate* (ClinSR) assessed based on the CTPs of *other drug* (OTH) collected for this study. A nine-year time-window was adopted here to facilitate the assessments of ClinSRs, which provided a drug adequate period of time to reach its final fate, and a total of fifteen time-windows (from 2001-2009 to 2015-2023, inclusive) were then assessed. The *phase success rates* (PSRs) of P1SR, P2SR and P3SR were shown using bars in blue, yellow and red, respectively. The dark line gave the dynamic variation in *overall success rate* (OSR). P1SR: Phase 1 success rate; P2SR: Phase 2 success rate; P3SR: Phase 3 success rate.

**Supplementary Table S1.** The representative studies previously published that related to the analysis of *clinical success rate* (ClinSR) of drugs.

<b>(a) Representative studies analyzing the success rates for the whole industry</b>	
Approval success rates of drug candidates based on target, action, modality, and their combinations	<i>Clin Transl Sci.</i> 2021; 14: 1113
Trends in clinical success rates and therapeutic focus	<i>Nat Rev Drug Discov.</i> 2019; 18: 495
Estimation of clinical trial success rates and related parameters	<i>Biostatistics.</i> 2019; 20: 273
Trends in clinical success rates	<i>Nat Rev Drug Discov.</i> 2016; 15: 379
Clinical development success rates for investigational drugs	<i>Nat Biotechnol.</i> 2014; 32: 40
Trends in risks associated with new drug development success rates for investigational drugs	<i>Clin Pharmacol Ther.</i> 2010; 87: 272
Can the pharmaceutical industry reduce attrition rates	<i>Nat Rev Drug Discov.</i> 2004; 3: 711
<b>(b) Representative studies analyzing the success rates for certain disease class</b>	
Development times and approval success rates for drugs to treat <b>infectious diseases</b>	<i>Clin Pharmacol Ther.</i> 2020; 107: 324
Changes in clinical trials of <b>cancer</b> drugs in mainland China over the decade 2009-18	<i>Lancet Oncol.</i> 2019; 20: e619
Lessons learned from two decades of <b>anticancer</b> drugs	<i>Trends Pharmacol Sci.</i> 2017; 38: 852
A quantitative analysis of therapeutic <b>cancer vaccines</b> in phase 2 or phase 3 trial	<i>J Immunother Cancer.</i> 2015; 3:48
Clinical approval success rates for investigational <b>cancer</b> drugs	<i>Clin Pharmacol Ther.</i> 2013; 94: 329
Development trends for new <b>cancer</b> therapeutics and vaccines	<i>Drug Discov Today.</i> 2008; 13: 30
<b>(c) Representative studies analyzing the success rates for certain individual disease</b>	
The wider perspective twenty years of clinical trials in <b>myelodysplastic syndromes</b>	<i>Br J Haematol.</i> 2022; 196: 329

<b>Alzheimer's</b> disease key insights from two decades of clinical trial failures	<i>J Alzheimers Dis.</i> 2022; 87 :83
<b>Parkinson's</b> disease drug development since 1999 a story of repurposing and relative success	<i>J Parkinsons Dis.</i> 2021;11: 421
Clinical trial risk in <b>leukemia</b> Biomarkers and trial design	<i>Hematol Oncol.</i> 2021; 39: 105
Transition probabilities for clinical trials investigating <b>individual diseases</b>	<i>Nat Rev Drug Discov.</i> 2019; 18: 658
Drug development for <b>breast, colorectal, and non-small cell lung cancers</b> from 1979 to 2014	<i>Cancer.</i> 2017; 123: 4672
Clinical trial risk in <b>chronic obstructive pulmonary disease</b> the effects of drug class and criteria	<i>Respiration.</i> 2016; 91: 79
Reducing clinical trial risk in <b>multiple sclerosis</b>	<i>Mult Scler Relat Disord.</i> 2016; 5: 8
Clinical trial risk in <b>hepatitis C</b> endpoint selection and drug action	<i>CJG Hepatol.</i> 2016; 2016: 6260271
Clinical trial success rates of anti- <b>obesity</b> agents the importance of combination therapies	<i>Obes Rev.</i> 2015; 16: 707
<b>Alzheimer's</b> disease drug-development pipeline few candidates, frequent failures	<i>Alzheimers Res Ther.</i> 2014; 6 :37
Clinical trial risk in <b>Non-Hodgkin's lymphoma</b> endpoint and target selection	<i>J Pharm Pharm Sci.</i> 2011; 14: 227
The success rate of new drug development in clinical trials <b>Crohn's disease</b>	<i>J Pharm Pharm Sci.</i> 2010;13: 191
<b>(d) Representative studies analyzing the success rates for a certain company</b>	
Achieving end-to-end success in the clinic <b>Pfizer's</b> learnings on R&D productivity	<i>Drug Discov Today.</i> 2022; 27: 697
Reviving an R&D pipeline a step change in the Phase II success rate	<i>Drug Discov Today.</i> 2021; 26: 308



**Supplementary Table S2.** The *phase 1 success rates* (P1SRs) for all CTPs and the CTPs of particular disease class (a total of 14 classes defined by WHO ICD-11) calculated across fifteen nine-year time-windows. All: all diseases; INFEC: Infectious/parasitic disease; CACER: Oncology; BLOOD: Blood/blood-forming organs disease; IMMUN: Immune system disease; METAB: Endocrine, nutritional or metabolic disease; NEURO: Neurology; VISAL: Visual system disease; CIRCU: Circulatory system disease; RESPR: Respiratory system disease; DIGST: Digestive system disease; SKINS: Skin disease; MUSKE: Musculoskeletal system/connective tissue disease; GENIT: Genitourinary and sexual related disease; OTHER: Other disease.

<b>Disease Class</b>	<b>2001 -2009</b>	<b>2002 -2010</b>	<b>2003 -2011</b>	<b>2004 -2012</b>	<b>2005 -2013</b>	<b>2006 -2014</b>	<b>2007 -2015</b>	<b>2008 -2016</b>	<b>2009 -2017</b>	<b>2010 -2018</b>	<b>2011 -2019</b>	<b>2012 -2020</b>	<b>2013 -2021</b>	<b>2014 -2022</b>	<b>2015 -2023</b>
All	69.7%	69.4%	65.6%	63.7%	59.4%	56.9%	55.8%	54.2%	52.9%	51.5%	50.7%	48.0%	49.8%	51.0%	51.3%
01 INFEC	76.2%	73.9%	64.8%	59.1%	51.0%	48.0%	48.4%	46.5%	43.0%	40.7%	42.5%	39.6%	47.5%	46.7%	44.3%
02 CACER	67.8%	67.8%	65.0%	64.3%	59.8%	56.2%	53.4%	51.8%	49.8%	46.4%	44.2%	40.0%	40.2%	40.0%	39.1%
03 BLOOD	92.9%	93.8%	81.0%	82.6%	75.9%	64.9%	70.3%	61.5%	63.0%	55.8%	58.2%	62.5%	57.4%	64.8%	76.4%
04 IMMUN	70.0%	85.0%	73.9%	61.8%	56.8%	58.5%	58.2%	57.6%	64.9%	62.5%	55.8%	57.1%	66.0%	67.2%	69.8%
05 METAB	69.4%	68.1%	57.5%	48.6%	47.3%	46.1%	43.9%	42.4%	42.5%	43.5%	44.9%	44.4%	50.3%	52.6%	55.9%
06 NEURO	74.2%	73.6%	66.2%	61.7%	58.9%	57.0%	58.1%	57.8%	56.8%	57.0%	59.2%	58.3%	58.7%	62.1%	62.7%
07 VISAL	73.9%	71.4%	62.9%	66.7%	68.0%	69.5%	68.9%	73.7%	70.7%	74.0%	68.8%	62.0%	62.5%	61.0%	59.0%
08 CIRCU	66.7%	58.3%	60.0%	67.4%	62.5%	64.1%	67.1%	66.7%	70.7%	71.8%	70.7%	67.9%	65.8%	65.9%	63.4%
09 RESPR	74.4%	70.0%	68.3%	68.4%	59.4%	60.8%	61.6%	58.5%	56.4%	57.4%	57.6%	55.6%	56.8%	60.2%	64.1%

---

10 DIGST	60.9%	63.6%	75.0%	72.6%	72.3%	66.7%	69.6%	65.8%	62.1%	65.6%	66.1%	67.4%	71.7%	75.2%	71.8%
11 SKINS	57.7%	74.2%	73.5%	69.2%	60.8%	58.7%	62.9%	65.7%	62.6%	65.1%	64.5%	66.1%	66.4%	68.5%	70.6%
12 MUSKE	83.3%	68.3%	68.8%	66.7%	61.9%	58.3%	62.5%	58.5%	58.0%	56.7%	57.6%	61.6%	68.2%	62.6%	65.1%
13 GENIT	91.7%	92.9%	82.4%	73.9%	75.0%	76.5%	79.4%	75.8%	69.7%	78.1%	75.9%	66.7%	77.4%	75.8%	70.6%
14 OTHER	56.3%	50.0%	57.7%	58.3%	64.7%	65.2%	59.2%	55.4%	59.3%	62.1%	68.6%	65.4%	65.5%	69.9%	75.0%

---

**Supplementary Table S3.** The *phase 2 success rates* (P2SRs) for all CTPs and the CTPs of particular disease class (a total of 14 classes defined by WHO ICD-11) calculated across fifteen nine-year time-windows. All: all diseases; INFEC: Infectious/parasitic disease; CACER: Oncology; BLOOD: Blood/blood-forming organs disease; IMMUN: Immune system disease; METAB: Endocrine, nutritional or metabolic disease; NEURO: Neurology; VISAL: Visual system disease; CIRCU: Circulatory system disease; RESPR: Respiratory system disease; DIGST: Digestive system disease; SKINS: Skin disease; MUSKE: Musculoskeletal system/connective tissue disease; GENIT: Genitourinary and sexual related disease; OTHER: Other disease.

<b>Disease Class</b>	<b>2001 -2009</b>	<b>2002 -2010</b>	<b>2003 -2011</b>	<b>2004 -2012</b>	<b>2005 -2013</b>	<b>2006 -2014</b>	<b>2007 -2015</b>	<b>2008 -2016</b>	<b>2009 -2017</b>	<b>2010 -2018</b>	<b>2011 -2019</b>	<b>2012 -2020</b>	<b>2013 -2021</b>	<b>2014 -2022</b>	<b>2015 -2023</b>
All	35.8%	32.8%	31.1%	28.3%	26.3%	24.2%	24.1%	23.3%	23.2%	23.1%	23.8%	22.2%	23.6%	25.1%	26.0%
01 INFEC	46.9%	44.7%	44.6%	41.5%	37.8%	34.1%	34.8%	32.5%	31.2%	28.4%	27.0%	22.1%	28.9%	34.6%	30.4%
02 CACER	29.1%	27.5%	26.9%	23.3%	21.7%	19.3%	18.5%	17.4%	16.6%	15.9%	16.8%	15.5%	16.2%	16.7%	18.1%
03 BLOOD	66.7%	58.8%	50.0%	47.1%	42.1%	45.5%	48.1%	51.7%	52.2%	55.1%	56.8%	51.1%	51.1%	47.9%	48.9%
04 IMMUN	58.3%	57.7%	53.6%	48.4%	44.7%	42.6%	35.5%	33.3%	35.6%	35.6%	38.1%	32.1%	32.2%	36.5%	35.3%
05 METAB	50.5%	41.0%	34.0%	31.7%	30.1%	29.3%	32.6%	33.3%	32.6%	34.6%	36.0%	35.7%	35.9%	36.0%	37.3%
06 NEURO	33.7%	30.9%	28.6%	25.9%	24.1%	22.7%	22.9%	24.9%	24.9%	24.9%	25.7%	25.4%	25.2%	27.5%	28.3%
07 VISAL	54.2%	50.0%	47.4%	38.6%	34.8%	33.7%	33.7%	33.0%	31.1%	30.9%	29.9%	29.0%	33.3%	35.9%	35.7%
08 CIRCU	37.8%	34.0%	27.6%	27.1%	29.4%	28.0%	24.3%	21.4%	22.5%	24.0%	22.0%	20.6%	21.4%	22.1%	22.1%
09 RESPR	29.2%	25.8%	26.1%	24.3%	23.8%	20.9%	20.3%	19.9%	19.4%	20.0%	19.6%	17.6%	22.2%	24.2%	23.4%

---

<b>10 DIGST</b>	38.5%	34.4%	33.8%	30.9%	27.9%	24.4%	24.1%	19.7%	22.8%	26.1%	26.6%	24.8%	26.0%	28.9%	28.8%
<b>11 SKINS</b>	28.6%	31.5%	29.2%	24.7%	21.0%	21.1%	23.2%	22.4%	24.4%	26.3%	25.9%	24.3%	26.6%	28.5%	30.2%
<b>12 MUSKE</b>	38.2%	38.1%	36.0%	36.3%	33.0%	30.9%	28.5%	26.6%	27.7%	27.2%	28.2%	24.8%	26.8%	29.0%	32.5%
<b>13 GENIT</b>	39.3%	30.6%	28.2%	29.4%	28.8%	29.2%	26.1%	29.0%	30.0%	27.9%	31.0%	30.2%	25.3%	25.9%	29.9%
<b>14 OTHER</b>	56.8%	39.6%	42.6%	36.9%	30.7%	26.7%	32.1%	29.8%	29.2%	28.2%	31.3%	29.6%	29.9%	29.7%	30.9%

---

**Supplementary Table S4.** The *phase 3 success rates* (P3SRs) for all CTPs and the CTPs of particular disease class (a total of 14 classes defined by WHO ICD-11) calculated across fifteen nine-year time-windows. All: all diseases; INFEC: Infectious/parasitic disease; CACER: Oncology; BLOOD: Blood/blood-forming organs disease; IMMUN: Immune system disease; METAB: Endocrine, nutritional or metabolic disease; NEURO: Neurology; VISAL: Visual system disease; CIRCU: Circulatory system disease; RESPR: Respiratory system disease; DIGST: Digestive system disease; SKINS: Skin disease; MUSKE: Musculoskeletal system/connective tissue disease; GENIT: Genitourinary and sexual related disease; OTHER: Other disease.

<b>Disease Class</b>	<b>2001 -2009</b>	<b>2002 -2010</b>	<b>2003 -2011</b>	<b>2004 -2012</b>	<b>2005 -2013</b>	<b>2006 -2014</b>	<b>2007 -2015</b>	<b>2008 -2016</b>	<b>2009 -2017</b>	<b>2010 -2018</b>	<b>2011 -2019</b>	<b>2012 -2020</b>	<b>2013 -2021</b>	<b>2014 -2022</b>	<b>2015 -2023</b>
All	54.6%	51.5%	48.8%	44.0%	41.6%	41.2%	40.7%	38.8%	39.4%	40.0%	40.1%	39.0%	40.8%	40.2%	39.2%
01 INFEC	60.7%	60.7%	55.7%	50.0%	41.8%	45.7%	46.8%	44.6%	41.0%	42.1%	38.2%	36.3%	37.4%	31.1%	22.8%
02 CACER	40.9%	38.2%	38.6%	37.5%	39.3%	37.5%	39.8%	41.1%	45.2%	49.3%	49.8%	51.3%	53.0%	54.0%	55.1%
03 BLOOD	85.7%	85.7%	87.5%	88.9%	90.0%	82.4%	66.7%	62.5%	66.7%	63.9%	63.6%	61.7%	60.4%	55.6%	46.0%
04 IMMUN	58.3%	66.7%	57.1%	62.5%	52.6%	46.2%	41.4%	32.1%	32.3%	33.3%	30.0%	28.0%	37.5%	38.5%	40.7%
05 METAB	62.8%	59.2%	57.5%	59.6%	52.9%	54.1%	52.1%	49.3%	53.2%	54.3%	52.3%	49.5%	50.5%	47.9%	45.7%
06 NEURO	59.1%	51.4%	48.2%	38.0%	32.1%	29.0%	26.1%	23.9%	25.2%	25.0%	29.8%	30.2%	31.8%	34.1%	35.7%
07 VISAL	50.0%	50.0%	53.3%	55.6%	47.6%	45.5%	34.4%	34.4%	37.1%	28.6%	25.0%	21.7%	23.1%	28.3%	31.0%
08 CIRCU	50.0%	47.2%	44.4%	35.1%	33.9%	36.9%	43.6%	40.9%	36.1%	32.5%	31.4%	28.8%	31.3%	26.2%	20.4%
09 RESPR	62.5%	57.9%	60.0%	50.0%	46.4%	52.6%	52.4%	48.8%	45.7%	42.3%	42.1%	38.6%	40.4%	35.9%	34.0%

---

<b>10 DIGST</b>	47.4%	43.5%	38.5%	37.5%	41.2%	34.2%	32.6%	31.4%	32.1%	34.6%	33.3%	26.7%	29.0%	30.2%	31.2%
<b>11 SKINS</b>	58.8%	55.0%	42.1%	27.8%	25.0%	36.0%	41.4%	36.4%	37.8%	40.9%	40.0%	43.1%	47.2%	49.2%	52.6%
<b>12 MUSKE</b>	87.0%	81.5%	75.9%	66.7%	65.6%	62.5%	55.9%	55.9%	48.6%	47.1%	48.7%	44.7%	40.0%	43.1%	44.0%
<b>13 GENIT</b>	66.7%	60.0%	43.8%	31.6%	42.3%	41.4%	40.0%	37.9%	34.4%	38.9%	44.4%	34.2%	26.7%	25.0%	25.5%
<b>14 OTHER</b>	47.4%	54.6%	58.3%	46.4%	43.3%	39.4%	36.1%	25.7%	22.0%	16.0%	12.0%	16.2%	20.8%	18.7%	18.9%

---