

Supplementary Appendix

Menezes et al., 2023

RETURN OF VOLUNTARY MOTOR CONTRACTION AFTER COMPLETE SPINAL CORD INJURY: A PILOT HUMAN STUDY ON POLYLAMININ

Supplementary Figures

2 Figures:

Figure S1 – Page 2-3

Figure S2 – Page 4

Supplementary Tables

6 Tables:

Table S1 – Page 5-6

Table S2 – Page 7-8

Table S3 – Pages 9

Table S4 – Pages 10-12

Table S5 – Page 13

Table S6 – Page 14

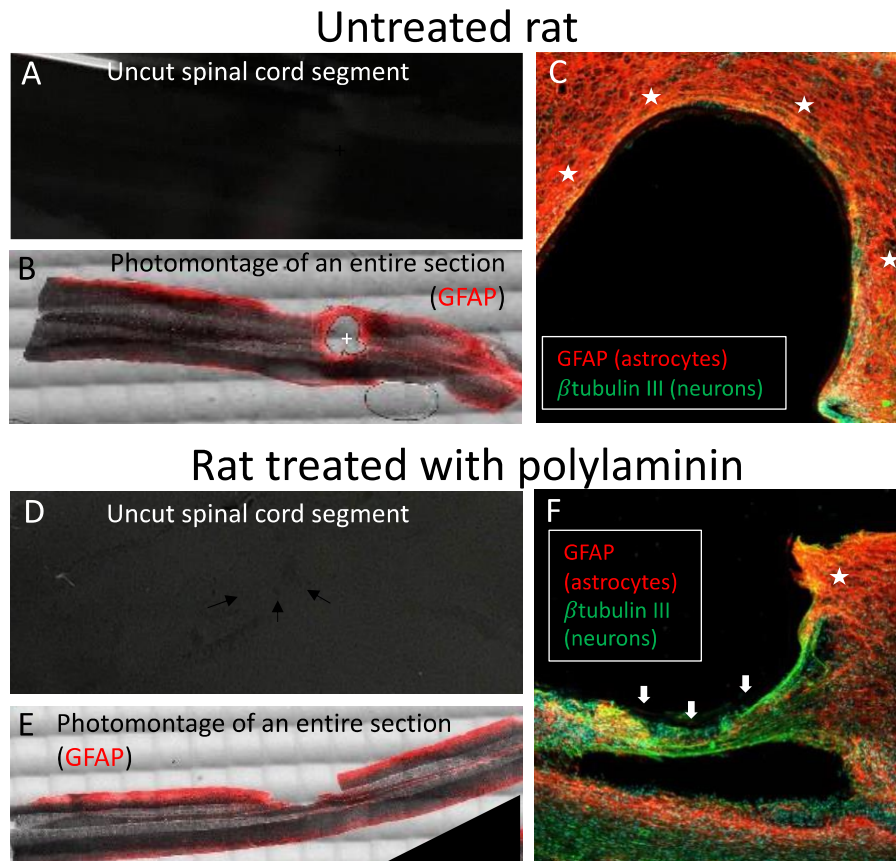


Figure S1 – Morphological analysis of rat spinal cords. The figure shows a comparison between two representative animals, not treated (A-C) and treated with polyaminin (D-F). After 8 weeks, rats were euthanized and had their vertebral columns removed, fixed and dissected to obtain the uncut segments of the spinal cords (A, D). The segments were sliced in a vibratome and 50 μm sections were immunostained to show areas occupied by reactive astrocytes (glial fibrillary acidic protein; GFAP), indicative of glial scarring (B, E). The control cord presents a rounded cavity, seen even in the uncut segment (crosses in panels A and B), surrounded by activated astrocytes (red in panel B). On the other hand, in the spinal cord of the animal receiving polyaminin, only a faint cavity-rim is visible in the uncut segment (arrows in panel D), while such cavity is not delineated by a strong reactivity for the astrocyte marker GFAP (red in panel E). Panels C and F show enlarged cavity areas (consecutive sections to B and E, respectively), where it can be appreciated that control animals display a strong and dense staining for GFAP (stars in panel C), whereas treated animals had a more confined expression of such marker (star in panel F). In addition, the polyaminin-treated animal displays a tissue bridge across the lesion site (thick arrows in panel F). Regenerating axons (detected with the TUJ-1 antibody, more sensitive to β tubulin III in

immature neurons; green) can be distinguished in association to the tissue bridge. Such bridge is not visible in the corresponding photo mounted image (E) probably because it does not expand throughout the whole thickness of the spinal cord and is visible only in fortuitous sections.

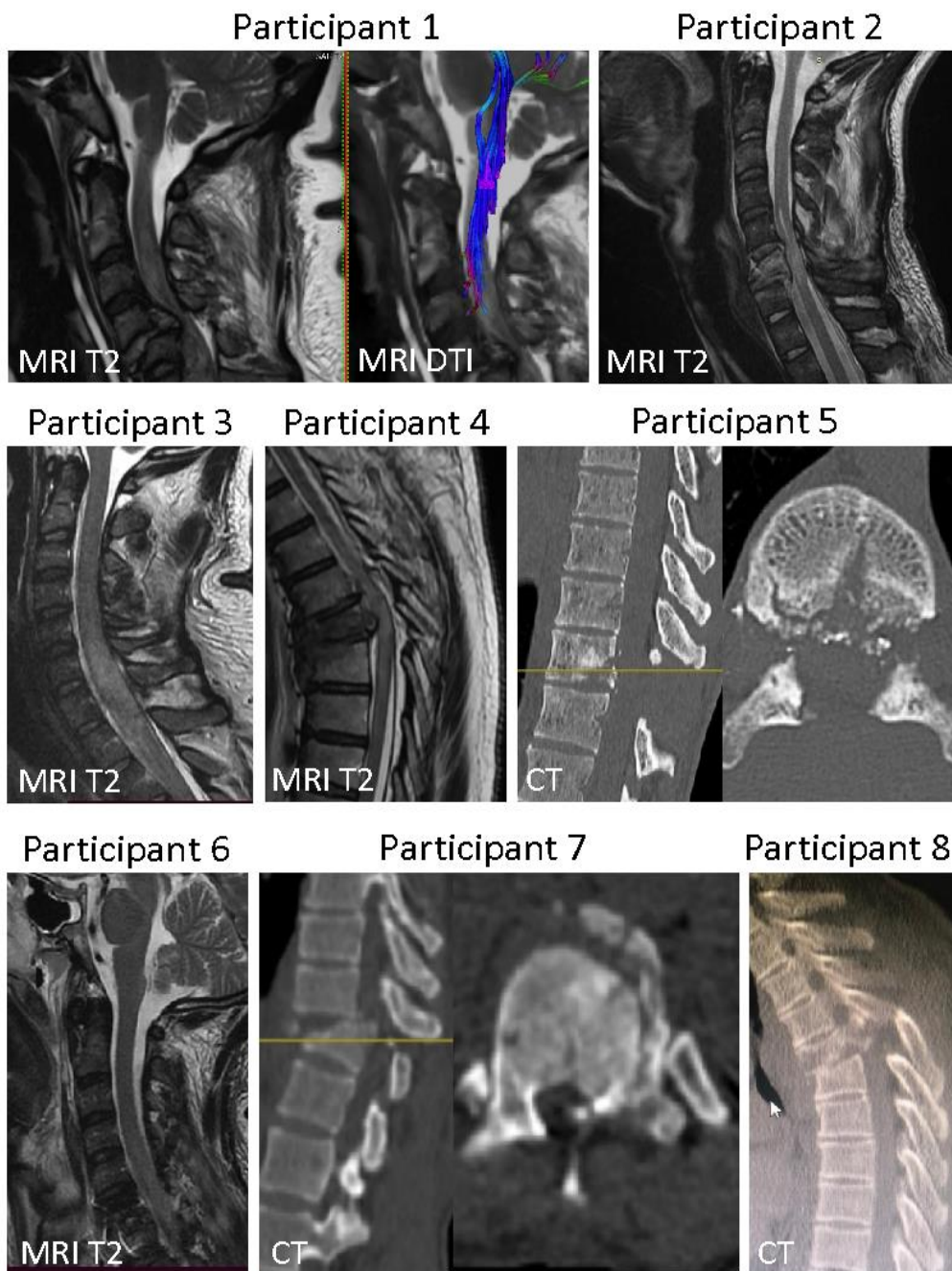


Figure S2. Aspects of the initial lesions observed in MRI or CT. Lesions of participants 1, 2, 3, 4 and 6 were evaluated by MRI. Lesions of participants 5, 7 and 8 were evaluated by CT due to the presence of projectile fragments (participant 5) or because the hospitalization centres had no MRI machine available (participants 7 and 8).

<i>Complication type grouped by organ/system</i> (N= 8)		<i>No. of complications</i>	<i>No. of patients</i>	<i>Incidence</i>
Infection	Pneumonia	3	3	
	Blood stream infection	3	3	
	Intestinal translocation infection	1	1	
	<i>Total of infections</i>	7	5	63%
Cardiovascular	Arrhythmia	1	1	
	Bradycardia	2	1	
	Hypovolemic shock	1	1	
	Hypotension	1	1	
	Cardiorespiratory arrest	2	2	
	Cardiac tamponade	1	1	
	<i>Total of cardiovascular complications</i>	8	2	25%
Pulmonary	Respiratory failure	2	1	
	Lobar collapse/atelectasis	1	1	
	Haemothorax	2	2	
	Hypoxemia	1	1	
	<i>Total of pulmonary complications</i>	6	3	38%
Gastrointestinal	Rhabdomyolysis	3	3	

Genitourinary (GI/GU)	Intestinal pseudo-obstruction	1	1	
	<i>Total of GI/GU complications</i>	4	3	38%
Neurological/ Psychiatric (N/P)	Delirium and agitation	2	2	
	Reduced level of consciousness	1	1	
	<i>Total of N/P complications</i>	3	2	25%
Haematological	Anaemia	2	2	
	<i>Total of haematological complications</i>	2	2	25%
Skin	Pressure sores	1	1	
	<i>Total of skin complications</i>	1	1	17%

Table S1. Severe complications in 8 patients (30 days after SCI).

Medical complications		Classification of complication	N. of complications
Infection	Urinary tract infection	M (10 ^{2,4,5,6,7,8})	10
	Pyelonephritis	S (1 ⁴)	1
	Pneumonia	S (3 ^{1,6,8}), M (1 ³)	4
	Genital Herpes infection	Mi (1 ²)	1
	Blood stream infection	S (3 ^{2,5,8}), M(1 ³)	4
	Fungal skin infection	Mi (1 ²)	1
	Intestinal translocation infection	S (1 ⁸)	1
	Sepsis	S (1 ⁸)	1
	TOTAL		23
Pulmonary	Respiratory failure	S (2 ¹)	2
	Lobar collapse/atelectasis	S (1 ¹), M (1 ⁴)	2
	Haemothorax	S (2 ^{4,5})	2
	Hypoxemia	S (1 ¹)	1
	Pleural effusion	M (1 ⁵)	1
	Desaturation	M (1 ⁵)	1
	TOTAL		9
Neurological/psychiatric	Pain	Mi (2 ^{1,5}), M(3 ^{2,3,7}),	5
	Delirium and agitation	S (2 ^{1,6}), M (2 ^{2,8})	4
	Headache	Mi (1 ²)	1
	Reduced level of consciousness	S (1 ¹)	1
	Mental confusion	M (1 ⁴)	1
	Dysautonomia	M (1 ²)	1
	Vertigo	Mi (2 ^{2,7})	2
	Muscle spasm	M (1 ²), Mi (1 ⁷)	2
	Diabetes insipidus (polyuria)	M (1 ⁶)	1
	Drooling	Mi (1 ⁶)	1
TOTAL		19	
Haematological	Anaemia	S (2 ^{6,8})	2
	TOTAL		2
Gastrointestinal and Genitourinary	Nausea/vomiting	M (1 ⁶)	1
	Gastroparesis	M (1 ⁶)	1
	Rhabdomyolysis	S (3 ^{2,6,8})	3
	Constipation	Mi (5 ^{2,4,5,7})	5
	Intestinal pseudo-obstruction	S(1 ⁸)	1
	Heartburn	Mi (1 ²)	1
	Urinary retention	Mi (1 ²), M(1 ⁴)	2
	Pre-renal failure	M (1 ³)	1
	Anuria	M (1 ³)	1

	Haematuria	M (1 ⁵)	1
	Diarrhoea	Mi (1 ⁶)	1
	TOTAL		18
Skin	Pressure-damage skin	M (3 ^{2,7,8}), S (1 ⁴)	4
	Pruritus (pharmacology allergy)	Mi (1 ⁴)	1
	Surgical wound hyperaemia	Mi (1 ⁵)	1
	TOTAL		6
Cardiovascular	Arrythmia	S (1 ¹)	1
	Bradycardia	S (2 ¹)	2
	hypovolemic shock	S (1 ¹)	1
	Septic shock	S (1 ⁸)	1
	Hypotension	Mi(1 ¹), S (1 ¹)	2
	Hypertension	M (1 ⁸)	1
	Cardiorespiratory arrest	S (3 ^{1,3,8})	3
	Cardiac tamponade	S (1 ³)	1
	TOTAL		12
OTHERS	Arthrodesis equipment poorly adapted by cervical tomography	Mi (1 ¹)	1
	Lower limb oedema associated with heterotopic ossification	M (1 ⁵)	1
	lower limb oedema	M (1 ⁸)	1
	TOTAL		3

Table S2. All medical complications. Medical complications observed in the 8 research participants over 12 months of clinical follow-up. The first column describes the types of complications, grouped by organ/system. The second column describes the classification of the complication as mild (Mi), moderate (M) or severe (S). The numbers in parentheses mean the number of events within each classification, and the superscripts identify the participants displaying the event. The third column describes the total number of complications in each category.

	<i>Creatinine</i> N (%)	<i>Urea</i> N (%)	<i>ALT</i> N (%)	<i>AST</i> N (%)
Before treatment				
Normal ¹	7 (88)	8 (100)	3 (75)	1 (20)
Mild ²	1 (12)	0 (0)	0 (0)	3 (60)
Moderate ³	0 (0)	0 (0)	1 (25)	1 (20)
Severe ⁴	0 (0)	0 (0)	0 (0)	0 (0)
Total	8 (100)	8 (100)	4 (100)	5 (100)
Two days after treatment				
Normal	7 (88)	7 (88)	4 (80)	1 (20)
Mild	1 (12)	1 (12)	1 (20)	3 (60)
Moderate	0 (0)	0 (0)	0 (0)	1 (20)
Severe	0 (0)	0 (0)	0 (0)	0 (0)
Total	8 (100)	8 (100)	5 (100)	5 (100)
Ten days after treatment				
Normal	7 (88)	8 (100)	2 (60)	1 (20)
Mild	1 (12)	0 (0)	3 (40)	4 (80)
Moderate	0 (0)	0 (0)	0 (0)	0 (0)
Severe	0 (0)	0 (0)	0 (0)	0 (0)
Total	8 (100)	8 (100)	5 (100)	5 (100)

TABLE S3. Renal and hepatic markers before and after polyaminin

administration. ¹Normal applies to the following reference values: creatinine, 0.5-1.2 mg/dL; urea, 18-55 mg/dL; alanine aminotransferase (ALT), lower than 41 U/dL, and aspartate aminotransferase (AST), lower than 35 U/mL; ²Mild: > upper limit of normal (ULN) to 2.5 x ULN; ³Moderate: > 2.5-5 x ULN; ⁴Severe: > 5-20 x ULN.

Participant		Initial (before treatment)	1 day	2 days	1 month	3 months	6 months	12 months	Reference values
1	Red cells (x10 ⁶ /mm ³)	4.29	3.5	3.86					3.9 - 5.1
	Haemoglobin (g/dL)	11.1	9.4	10.8					12.0 - 16
	Haematocrit (%)	34.6	28.2	30.8					35 - 45 %
	Leukocytes (/mm ³)	11,100	12,620	15,690					4,000 – 10,000
	Basophils (%)	0.1	0	0					0 - 2 %
	Eosinophils (%)	0.7	0	0					1 - 6 %
	Neutrophils (%)	84.8	80.0	55					40 - 80 %
	Rods (%)	-	5	1					0 - 5 %
	Segmented (%)	-	75	54					40 - 80 %
	Lymphocytes (%)	11.2	17	40					20 - 50 %
	Monocytes (%)	3.2	3	5					2 - 10 %
	Platelets (/mm ³)	315,000	274,000	283,000					150,000 – 450,000
2	Red cells (x10 ⁶ /mm ³)	4.8	3.53	3.27	4.33	4.98	5.13	5.09	4.3 - 5.5
	Haemoglobin (g/dL)	15.1	11.1	10.6	13.9	14.8	16.2	16.1	13.5 - 18.0
	Haematocrit (%)	47.3	34.8	32.5	41.9	43	44.8	46.5	40 - 50%
	Leukocytes (/mm ³)	11,200	12,100	7,600	7,400	5,060	8,480	4,540	4,500 – 13,000
	Basophils (%)	0	0	0	0	1	0.2	0.4	0 - 2 %
	Eosinophils (%)	1	0	2	2	4	0.4	2	1 - 6 %
	Neutrophils (%)	90	83	69	75	55	79.9	49.3	40 - 80 %
	Rods (%)	2	2	2	1	0	-	0	0 - 5 %
	Segmented (%)	88	81	67	74	55	-	49.3	40 - 80 %
	Lymphocytes (%)	6	12	24	15	34	9.4	41.9	20 - 50 %
	Monocytes (%)	3	5	5	8	6	10.1	6.4	2 - 10 %
	Platelets (/mm ³)	167,000	133,000	129,000	126,000	128,000	145,000	118,000	150,000 – 450,000
3	Red cells (x10 ⁶ /mm ³)	3.89	3.47	3.55	-	-	-	-	4.3 - 5.5
	Haemoglobin (g/dL)	12.5	11	11.3	-	-	-	-	13.5 - 18.0
	Haematocrit (%)	36.3	31.8	32.3	-	-	-	-	40 - 50%
	Leukocytes (/mm ³)	8,300	6,500	8,000	-	-	-	-	4,500 – 13,000
	Basophils (%)	0	0	0	-	-	-	-	0 - 2 %
	Eosinophils (%)	0	0	2	-	-	-	-	1 - 6 %
	Neutrophils (%)	86	68	65	-	-	-	-	40 - 80 %
	Rods (%)	2	1	1	-	-	-	-	0 - 5 %
	Segmented (%)	86	67	64	-	-	-	-	40 - 80 %
	Lymphocytes (%)	8	27	29	-	-	-	-	20 - 50 %

	Monocytes (%)	4	5	4	-	-	-	-	2 - 10 %
	Platelets (/mm ³)	191,000	131,000	146,000	-	-	-	-	150,000 – 450,000
4	Red cells (x10 ⁶ /mm ³)	3.27	3.1	2.93	3.15	4.22	4.73	5.04	3.9 - 5.1
	Haemoglobin (g/dL)	9.6	8.7	8.5	8.2	10.5	12.4	13.5	12.0 - 16
	Haematocrit (%)	26.5	25.9	24.4	25.2	32	38.4	43.7	35 - 45 %
	Leukocytes (/mm ³)	7,200	8,400	7,600	11,900	4,800	6,900	5,120	4,000 – 10,000
	Basophils (%)	0.1	0	0	0	0	0	1	0 - 2 %
	Eosinophils (%)	1	0	2	5	5	2	2	1 - 6 %
	Neutrophils (%)	78.2	84	74	76	46	60	55	40 - 80 %
	Rods (%)	2	6	6	2	3	3	2	0 - 5 %
	Segmented (%)	75	78	68	74	43	57	53	40 - 80 %
	Lymphocytes (%)	15	10	20	13	36	27	36	20 - 50 %
	Monocytes (%)	7	6	4	6	13	11	6	2 - 10 %
	Platelets (/mm ³)	123,000	83,000	124,000	312,000	229,000	210,000	222,000	150,000 - 450,000
5	Red cells (x10 ⁶ /mm ³)	3.3	2.63	2.36	4.04	-	4.8	4.56	4.3 - 5.5
	Haemoglobin (g/dL)	9.7	7.7	7.5	11.6	-	13.4	13.2	13.5 - 18.0
	Haematocrit (%)	29.2	23.6	20.9	35	-	42.7	39	40 - 50%
	Leukocytes (/mm ³)	10,800	8,400	7,200	6,800	-	3,700	10,800	4,500 – 13,000
	Basophils (%)	0	0	0	0	-	0	0	0 - 2 %
	Eosinophils (%)	0	2	1	2	-	2	3	1 - 6 %
	Neutrophils (%)	90	73	75	64	-	46	65	40 - 80 %
	Rods (%)	1	3	2	3	-	-	2	0 - 5 %
	Segmented (%)	89	70	73	61	-	-	63	40 - 80 %
	Lymphocytes (%)	3.1	20	18	29	-	47	25	20 - 50 %
	Monocytes (%)	6.9	5	6	5	-	5	7	2 - 10 %
	Platelets (/mm ³)	162,000	115,000	123,000	447,000	-	307,000	315,000	150,000 – 450,000
6	Red cells (x10 ⁶ /mm ³)	2.73	2.91	3.4	3.73	3.66	4.22	4.59	4.3 - 5.5
	Haemoglobin (g/dL)	7.6	8.2	9.4	10.4	10.2	12.19	13.1	13.5 - 18.0
	Haematocrit (%)	24	25.9	29.5	33.1	31.6	39.5	40.4	40 - 50%
	Leukocytes (/mm ³)	5,000	7,020	5,610	7,020	4,630	4,770	4,720	4,500 – 13,000
	Basophils (%)	0	0	0	0	0.5	0.2	0.2	0 - 2 %
	Eosinophils (%)	0	1	4.6	2	8.4	3.8	4.7	1 - 6 %
	Neutrophils (%)	89	-	-	-	43.5	-	-	40 - 80 %
	Rods (%)	5	-	-	-	-	-	-	0 - 5 %
	Segmented (%)	84	83.2	66.7	60	-	54.9	53.4	40 - 80 %
	Lymphocytes (%)	9	11.1	20.7	26	38.9	32.7	31.8	20 - 50 %

	Monocytes (%)	2	4.7	8	12	8.7	8.4	10	2 - 10 %
	Platelets (/mm ³)	123,000	128,000	155,000	248,000	218,000	206,000	193,000	150,000 – 450,000
7	Red cells (x10 ⁶ /mm ³)	3.6	2.9	2.9	3.21	4.7	4.14	4.34	3.9 - 5.1
	Haemoglobin (g/dL)	11	8.8	8.9	11.3	12.8	12	13.4	12.0 - 16
	Haematocrit (%)	33.8	28.7	28.8	32.7	40.6	35.7	39.6	35 - 45 %
	Leukocytes (/mm ³)	8,500	10,500	9,300	10,750	10,000	13,180	9,370	4,000 – 10,000
	Basophils (%)	0	0	0	0	0	0	0.2	0 - 2 %
	Eosinophils (%)	0	0	0	3	8	1	1.3	1 - 6 %
	Neutrophils (%)	82	70	97	65	57	85	64.4	40 - 80 %
	Rods (%)	3	3	27	2	0	3	-	0 - 5 %
	Segmented (%)	79	67	70	65	57	82	-	40 - 80 %
	Lymphocytes (%)	12	18	2	23	28	12	26.7	20 - 50 %
	Monocytes (%)	6	12	10.1	7	7	2	7.4	2 - 10 %
	Platelets (/mm ³)	244,000	266,000	227,000	349,000	330,000	316,000	259,000	150,000 – 450,000
8	Red cells (x10 ⁶ /mm ³)	4.31	-	3.37	3.19				4.3 - 5.5
	Haemoglobin (g/dL)	13.3	-	10.6	9.7				13.5 - 18.0
	Haematocrit (%)	38.8	-	30.4	26.3				40 - 50%
	Leukocytes (/mm ³)	11,370	-	13,160	26,030				4,500 – 13,000
	Basophils (%)	2	-	0	0				0 - 2 %
	Eosinophils (%)	0	-	2	0				1 - 6 %
	Neutrophils (%)	110	-	83	89				40 - 80 %
	Rods (%)	3	-	3	7				0 - 5 %
	Segmented (%)	80	-	80	82				40 - 80 %
	Lymphocytes (%)	11	-	10	8				20 - 50 %
	Monocytes (%)	4	-	5	3				2 - 10 %
	Platelets (/mm ³)	133,000	-	101,000	435,000				150,000 – 450,000

TABLE S4. Blood counts before and after polylaminin administration.

<i>Study sites</i>	<i>Included participants</i>
Public Hospitals	
Public State Hospital Azevedo Lima (HEAL)	1, 8
Army Central Hospital (HCE)	3
Rio de Janeiro Municipal Hospital Souza Aguiar (HMSA)	4, 5 ^a , 7
Private Hospitals	
Hospital Copa Star (HCS)	2
Hospital Ênio Serra (HES)	5 ^b
Hospital São José (HSJ)	6 ^a
Hospital Vila da Serra (HVS)	6 ^b

Table S5. Study sites. ^a hospital of inclusion, ^b hospital of long-term hospitalization

Inclusion criteria

- Age between 18 and 70 years old
- ASIA Impairment Scale grade A
- Traumatic spinal cord injury at neurologic level C4 to T12
- Written informed consent by patient or legally authorized representative to participate in the study

Exclusion criteria

- Severe brain trauma
- Need of permanent mechanical respiratory support
- Concomitant trauma considered by the study physicians to be severe enough to preclude neurological improvement
- Previous neurological diseases (EX. Alzheimer's, Amyotrophic Lateral Sclerosis, Cerebrovascular Accident sequelae) or previous neurological deficits of any aetiology
- Abuse or dependence of alcohol or illicit drugs
- Any other comorbidity that, at the discretion of the investigator, precludes inclusion of the patient in the study

Table S6. Eligibility criteria.