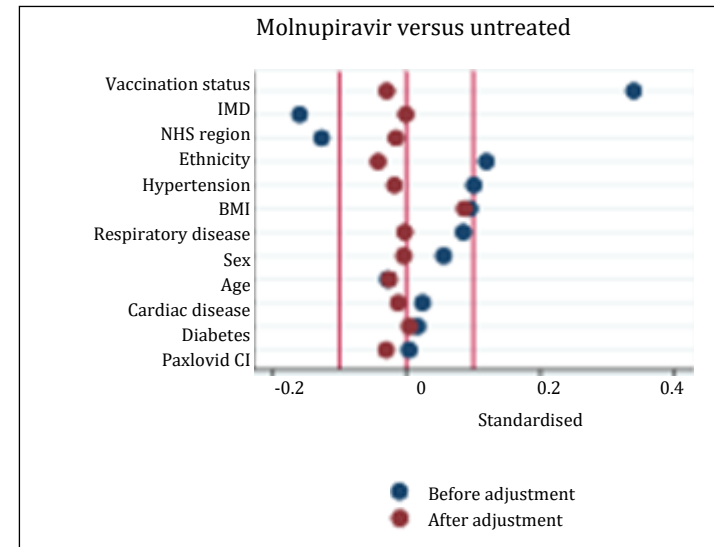
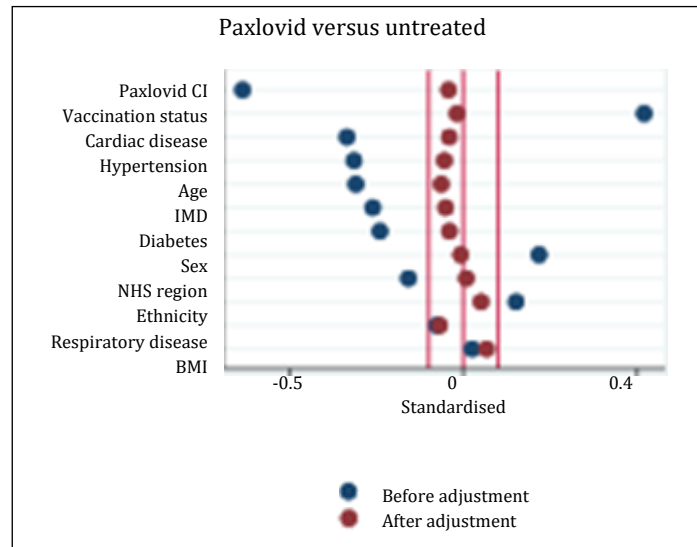
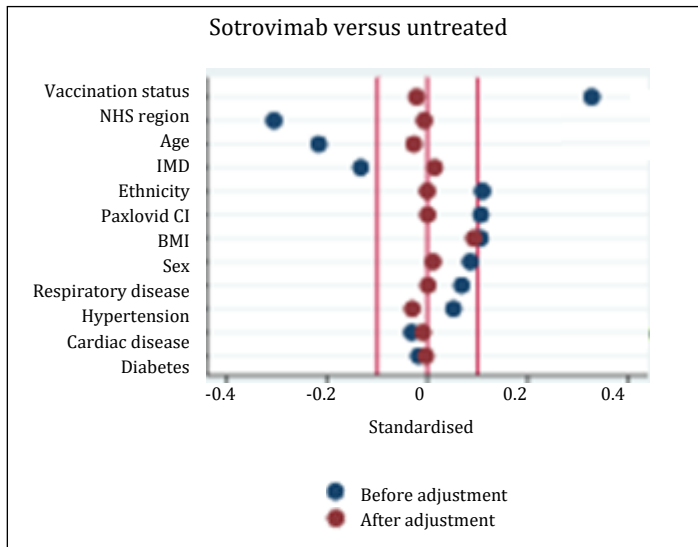


**Supplementary 1.** The propensity score (PS) was generated by using a logistic regression model, regressing treatment status (either sotrovimab and untreated, paxlovid and untreated or molnupiravir and untreated) on observed baseline characteristics including age, sex, ethnic group, index of multiple deprivation (five categories), NHS region of general practice, vaccination status, body mass index, diabetes, hypertension, chronic cardiac and respiratory diseases. The propensity score was then used to balance covariates using the inverse probability of treatment weighting (IPTW) method. The balancing of the cohorts using the weighted model was examined by comparing standardised differences between cohorts.



**Supplementary 2.** Rates of specific adverse events (AEs) by treatment group during the study period.

	Untreated			Sotrovimab group			Paxlovid group			Molnupiravir group		
	Event	PerExp	Rate (95% CI) *	Event	PerExp	Rate (95% CI) *	Event	PerExp	Rate (95% CI) *	Event	PerExp	Rate (95% CI) *
<b>All AEs</b>	1071	2750607	0.39 (0.37, 0.41)	237	425679	0.56 (0.49, 0.63)	177	394227	0.45 (0.39, 0.52)	99	251181	0.39 (0.32, 0.48)
<b>SmPC</b>	981	2751951	0.36 (0.33, 0.38)	189	426381	0.44 (0.38, 0.52)	153	394491	0.39 (0.33, 0.45)	87	251319	0.35 (0.28, 0.44)
Diverticulitis	75	2770599	0.03 (0.02, 0.03)	9	429231	0.02 (0.01, 0.04)	9	397005	0.02 (0.01, 0.04)	9	252669	0.04 (0.02, 0.07)
Diarrhoea	243	2767203	0.09 (0.08, 0.10)	39	428745	0.09 (0.07, 0.12)	33	396543	0.08 (0.06, 0.12)	27	252387	0.11 (0.07, 0.16)
Taste	21	2770881	0.01 (0.00, 0.01)	9	429141	0.02 (0.01, 0.04)	9	396879	0.02 (0.01, 0.04)	3	252705	0.01 (0.00, 0.03)
Rash	135	2770077	0.05 (0.04, 0.06)	39	428799	0.09 (0.07, 0.12)	21	396885	0.05 (0.03, 0.08)	9	252639	0.04 (0.02, 0.07)
Bronchospasm	0	2771871	0.00 (0.00, 0.00)	0	429345	0.01 (0.00, 0.01)	0	397137	0.00 (0.00, 0.01)	0	252789	0.00 (0.00, 0.01)
Contact dermatitis	9	2771787	0.00 (0.00, 0.01)	0	429345	0.00 (0.00, 0.01)	0	397137	0.00 (0.00, 0.01)	3	252771	0.01 (0.00, 0.03)
Dizziness	93	2769813	0.03 (0.03, 0.04)	21	429021	0.05 (0.03, 0.07)	15	396855	0.04 (0.02, 0.06)	9	252675	0.04 (0.02, 0.07)
Nausea & vomiting	285	2766171	0.10 (0.09, 0.12)	45	428607	0.10 (0.08, 0.14)	27	396669	0.07 (0.05, 0.10)	15	252483	0.06 (0.04, 0.10)
Headache	177	2767275	0.06 (0.06, 0.07)	33	428793	0.08 (0.05, 0.11)	45	396357	0.11 (0.08, 0.15)	21	252399	0.08 (0.05, 0.13)
<b>Drug reaction</b>	39	2771313	0.01 (0.01, 0.02)	15	428991	0.03 (0.02, 0.06)	9	397053	0.02 (0.01, 0.04)	3	252729	0.01 (0.00, 0.03)
Anaphylaxis	3	2771799	0.00 (0.00, 0.00)	3	429273	0.01 (0.00, 0.02)	0	397137	0.00 (0.00, 0.02)	3	252759	0.01 (0.00, 0.03)
Drug reaction	33	2771385	0.01 (0.01, 0.02)	15	429033	0.03 (0.02, 0.06)	9	397053	0.02 (0.01, 0.04)	3	252753	0.01 (0.00, 0.03)
<b>Immune mediated</b>	63	2771001	0.02 (0.02, 0.03)	27	428937	0.06 (0.04, 0.09)	15	396945	0.04 (0.02, 0.06)	9	252705	0.04 (0.02, 0.07)
Rheumatoid	21	2771673	0.01 (0.00, 0.01)	3	429261	0.01 (0.00, 0.02)	3	397083	0.01 (0.00, 0.02)	3	252747	0.01 (0.00, 0.03)
SLE	3	2771871	0.00 (0.00, 0.00)	3	429321	0.01 (0.00, 0.02)	0	397137	0.00 (0.00, 0.02)	0	252789	0.00 (0.00, 0.01)

	15	2771733	0.01 (0.00, 0.01)	3	429267	0.01 (0.00, 0.02)	3	397113	0.01 (0.00, 0.02)	0	252789	0.00 (0.00, 0.01)
	Event	PerExp	Rate (95% CI) *	Event	PerExp	Rate (95% CI) *	Event	PerExp	Rate (95% CI) *	Event	PerExp	Rate (95% CI) *
	<b>Untreated</b>			<b>Sotrovimab group</b>			<b>Paxlovid group</b>			<b>Molnupiravir group</b>		
Psoriasis	15	2771733	0.01 (0.00, 0.01)	3	429267	0.01 (0.00, 0.02)	3	397113	0.01 (0.00, 0.02)	0	252789	0.00 (0.00, 0.01)
Psoriatic Arthritis	9	2771823	0.00 (0.00, 0.01)	3	429303	0.01 (0.00, 0.02)	0	397137	0.00 (0.00, 0.01)	3	252783	0.01 (0.00, 0.03)
AxSpA	9	2771757	0.00 (0.00, 0.01)	3	429249	0.01 (0.00, 0.02)	3	397089	0.01 (0.00, 0.02)	3	252783	0.01 (0.00, 0.03)
IBD	9	2771631	0.00 (0.00, 0.01)	9	429249	0.01 (0.00, 0.02)	9	397059	0.02 (0.01, 0.04)	3	252759	0.01 (0.00, 0.03)

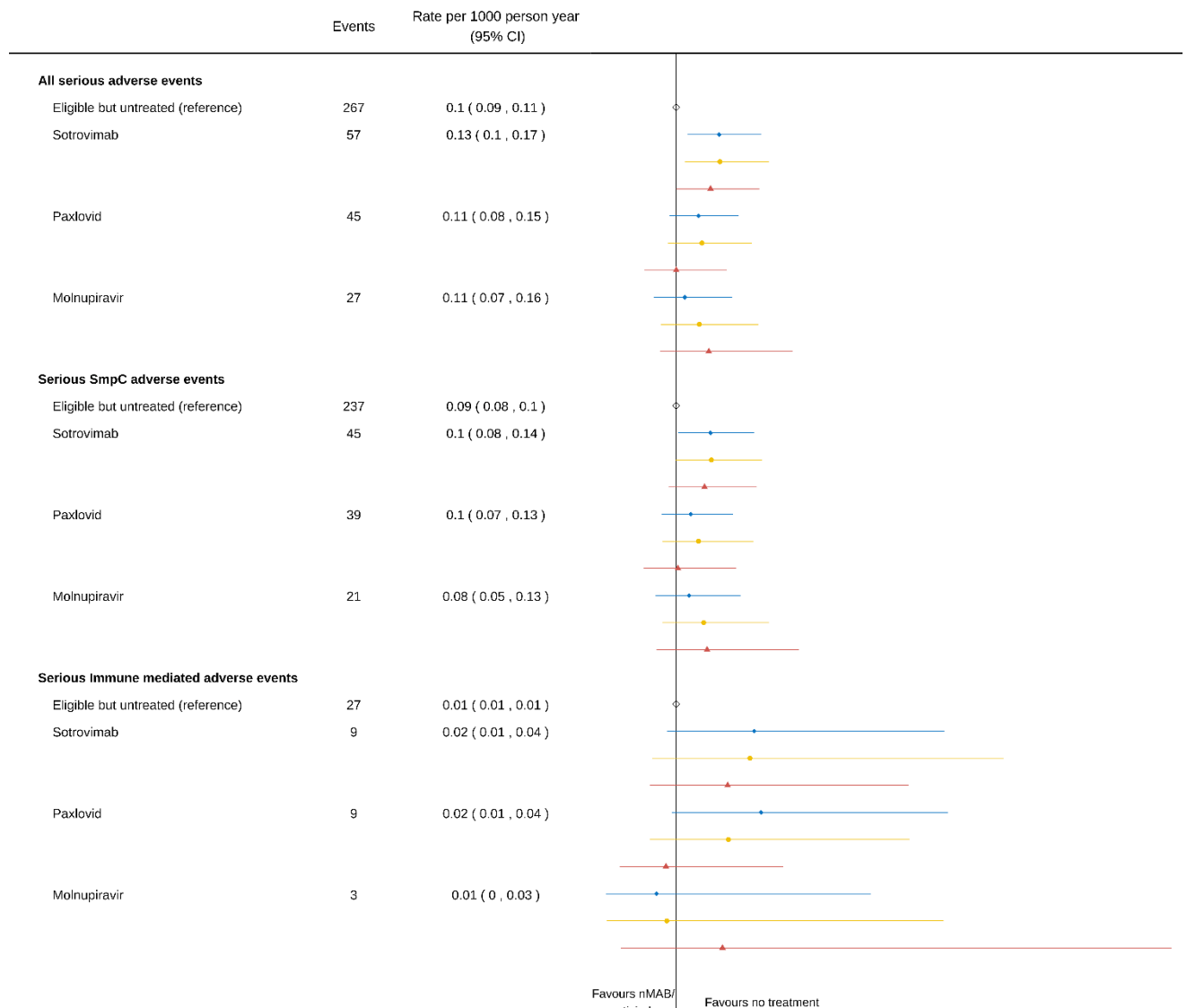
PerExp: Person exposure.

\*Rate is 29-day event rates per 1000 patient-years with 95% confidence intervals.

To reduce the risk of disclosure, all counts and person exposure have been rounded to midpoint 6 and rates have been calculated using these rounded values.

SLE: Systemic Lupus Erythematosus; AxSpA: Axial spondylarthritis; IBD Inflammatory bowel disease.

**Supplementary 3.** Comparing risk of serious adverse events (SmPC and immune mediated) during the 28 days of follow-up between patients treated with sotrovimab paxlovid and molnupiravir compared to the untreated population.



Hazard ratio (95% confidence interval) for adverse events (SmPC and immune mediated). Serious drug reactions not presented as very low events number. To reduce the risk of disclosure, all counts have been rounded to midpoint 6 and rates have been calculated using these rounded values.

Age and sex adjusted model.

Fully adjusted model; further adjusted for ethnic group, index of multiple deprivation (five categories), Sustainability Transformation Partnerships code of their registered GP surgery, vaccination status, body mass index, diabetes, hypertension, chronic cardiac and respiratory diseases, and the 10 high risk cohort categories. Propensity model; adjusted for age, sex, ethnic group, index of multiple deprivation (five categories), Sustainability Transformation Partnerships code of their registered GP surgery, vaccination status, body mass index, diabetes, hypertension, chronic cardiac and respiratory diseases.

Propensity score model used a baseline covariate including age, sex, ethnic group, index of multiple deprivation (five categories), NHS region of general practice, vaccination status, body mass index, diabetes, hypertension, chronic cardiac and respiratory diseases.S

**Supplementary 4.** Rates of adverse events (AEs) during the study period and the historical comparative pre-pandemic period.

\*Rate is 29-day event rates per 1000 patient-years with 95% confidence intervals. SLE: Systemic Lupus Erythematosus; AxSpA: Axial spondylarthritis; IBD Inflammatory bowel disease

	All Study Population			Comparative Pre-Pandemic Records		
	Events	Person Exp	Rate (95% CI) *	Events	Person Exp	Rate (95% CI) *
<b>Serious SmPC AEs</b>	345	3845643	0.09 (0.08, 0.10)	321	4260981	0.08 (0.07, 0.08)
Diverticulitis	63	3850263	0.02 (0.01, 0.02)	69	4264887	0.02 (0.01, 0.02)
Diarrhoea	123	3849195	0.03 (0.03, 0.04)	135	4263747	0.03 (0.03, 0.04)
Taste	0	3851169	0.00 (0.00, 0.00)	0	4265871	0.00 (0.00, 0.00)
Rash	33	3850851	0.01 (0.01, 0.01)	21	4265541	0.00 (0.00, 0.01)
Contact dermatitis	3	3851145	0.00 (0.00, 0.00)	21	4265547	0.00 (0.00, 0.01)
Dizziness	9	3850923	0.00 (0.00, 0.00)	15	4265655	0.00 (0.00, 0.01)
Nausea and vomiting	93	3849399	0.02 (0.02, 0.03)	21	4265517	0.00 (0.00, 0.01)
Headache	21	3850869	0.01 (0.00, 0.01)	45	4265283	0.01 (0.01, 0.01)
<b>Serious drug reaction AEs</b>	3	3851067	0.00 (0.00, 0.00)	3	4265829	0.00 (0.00, 0.00)
Anaphylaxis	3	3851073	0.00 (0.00, 0.00)	3	4265847	0.00 (0.00, 0.00)
Drug reactions	3	3851157	0.00 (0.00, 0.00)	3	4265853	0.00 (0.00, 0.00)
<b>Serious immune mediated AEs</b>	51	3850617	0.01 (0.01, 0.02)	99	4264395	0.00 (0.00, 0.01)
Rheumatoid arthritis	15	3851025	0.00 (0.00, 0.01)	21	4265517	0.00 (0.00, 0.00)
SLE	3	3851157	0.00 (0.00, 0.00)	3	4265829	0.00 (0.00, 0.00)
Psoriasis	3	3851133	0.00 (0.00, 0.00)	3	4265793	0.00 (0.00, 0.00)
Psoriatic Arthritis	3	3851145	0.00 (0.00, 0.00)	3	4265811	0.00 (0.00, 0.00)
AxSpa	15	3850989	0.00 (0.00, 0.01)	21	4265529	0.00 (0.00, 0.01)
IBD	15	3851001	0.00 (0.00, 0.01)	45	4265217	0.01 (0.01, 0.01)

To reduce the risk of disclosure, all counts and person exposure have been rounded to midpoint 6 and rates have been calculated using these rounded values.

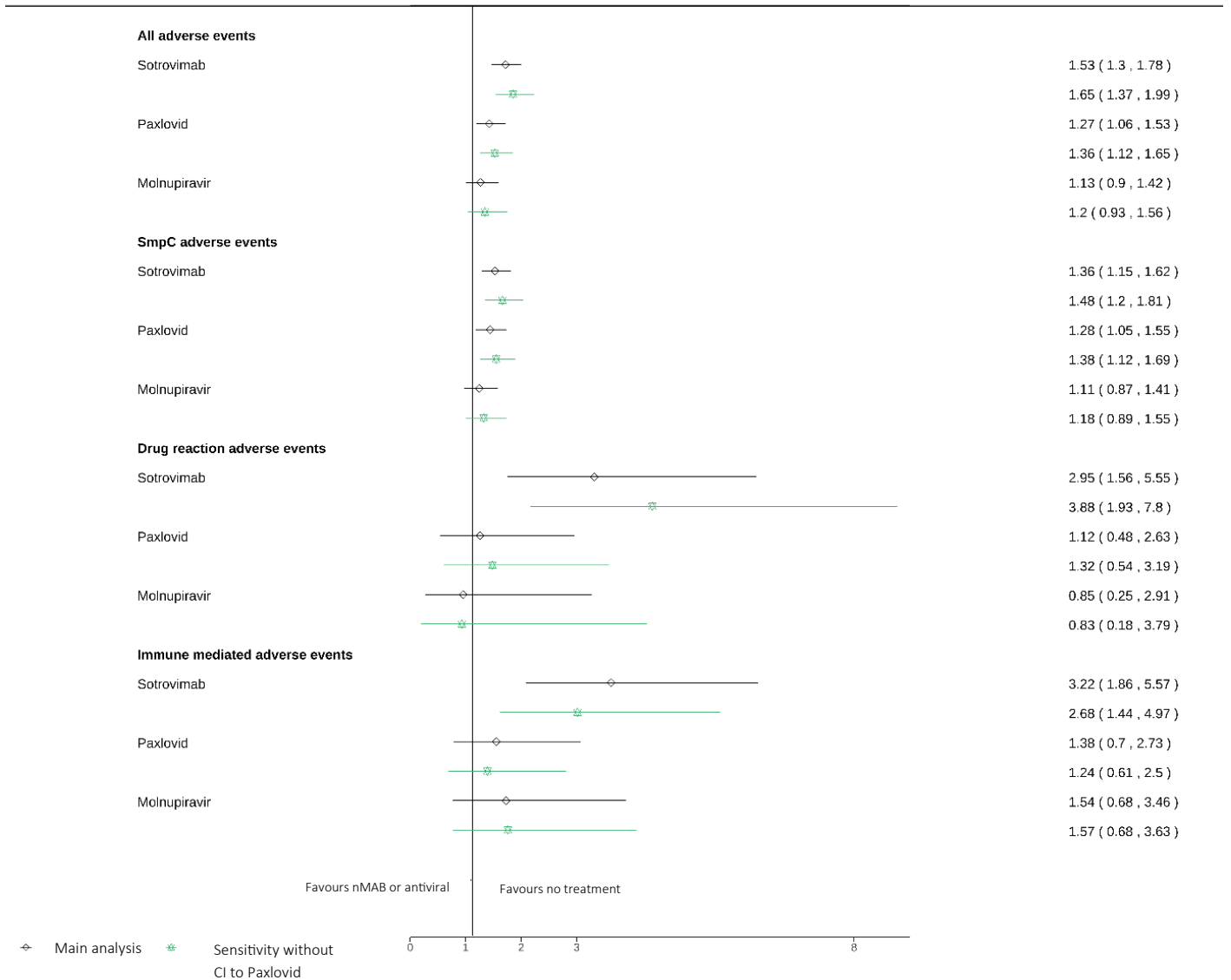
**Supplementary 5.** Rates of all adverse events (AEs) calculated from per protocol approach (main analysis where treatment population were considered at risk from the start date of their treatment record and untreated population were considered at risk from 2-days after the date of their positive Covid-19 test) and intention to treat approach (sensitivity analysis where all individuals were considered at risk from the date of their positive Covid-19 test).

	Per protocol (main analysis)			intention to treat approach (sensitivity analysis)		
	Events	Person Exp	Rate (95% CI) *	Events	Person Exp	Rate (95% CI) *
<b>SmPC AEs</b>	1413	3824145	0.37 (0.35, 0.39)	1785	4093389	0.44 (0.42, 0.46)
Diverticulitis	99	3849507	0.03 (0.02, 0.03)	117	4121313	0.03 (0.02, 0.03)
Diarrhoea	351	3844881	0.9 (0.08, 0.10)	417	4116453	0.01 (0.09, 0.11)
Taste	45	3849609	0.01 (0.01, 0.02)	81	4121061	0.02 (0.02, 0.02)
Rash	201	3848403	0.05 (0.05, 0.06)	213	4120173	0.05 (0.05,0.06)
Bronchospasm	0	3851139	0.00 (0.00, 0.00)	3	4122939	0.00 (0.00, 0.00)
Contact dermatitis	9	3851037	0.00 (0.00, 0.00)	9	4122873	0.00 (0.00, 0.00)
Dizziness	141	3848367	0.04 (0.03, 0.04)	171	4120065	0.04 (0.04, 0.05)
Nausea and vomiting	369	3843927	0.10 (0.09, 0.11)	465	4115385	0.11 (0.10, 0.12)
Headache	279	3844821	0.07 (0.06, 0.08)	417	4115085	0.10 (0.09, 0.11)
<b>Drug reaction AEs</b>	63	3850089	0.02 (0.01, 0.02)	81	4121859	0.02 (0.02, 0.02)
Anaphylaxis	9	3850971	0.00 (0.00, 0.01)	9	4122807	0.00 (0.00, 0.00)
Drug reactions	57	3850227	0.01 (0.01, 0.02)	69	4121997	0.02 (0.01, 0.02)
<b>Immune mediated AEs</b>	117	3849591	0.03 (0.03, 0.04)	129	4121385	0.03 (0.03, 0.04)
Rheumatoid arthritis	33	3850761	0.01 (0.01, 0.01)	33	4122609	0.01 (0.01, 0.00)
SLE	3	3851115	0.00 (0.00, 0.00)	3	4122945	0.00 (0.00, 0.01)
Psoriasis	21	3850905	0.01 (0.00, 0.01)	27	4122723	0.01 (0.00, 0.01)
Psoriatic Arthritis	9	3851043	0.00 (0.00, 0.00)	15	4122849	0.00 (0.00, 0.01)
AxSpa	21	3850887	0.01 (0.00, 0.01)	21	4122705	0.01 (0.00, 0.01)
IBD	27	3850701	0.01 (0.00, 0.01)	39	4122519	0.01 (0.01, 0.01)

\*Rate is 29-day event rates per 1000 patient-years with 95% confidence intervals. SLE: Systemic Lupus Erythematosus; AxSpA: Axial spondylarthritis; IBD Inflammatory bowel disease. To reduce the risk of disclosure, all counts and person exposure have been rounded to midpoint 6 and rates have been calculated using these rounded values.

**Supplementary 6.** Sensitivity analyses: comparing risk of adverse events (SmPC, drug related and immune mediated) during the 28 days of follow-up between patients treated with sotrovimab paxlovid and molnupiravir compared to the untreated population, restricting to those without contraindication to paxlovid.

HR (95% CI)





**Supplementary 7:** Sensitivity analyses: comparing risk of adverse events (SmPC, drug related and immune mediated) during the 28 days of follow-up between patients treated with sotrovimab paxlovid and molnupiravir compared to the untreated population, restricting the treated cohort to those who could be identified as eligible using NHS Digital logic and associated code lists in the OpenSAFELY platform (as used for identifying eligibility in the untreated population).

