

1 Gene deletions in complement factor H related protein gene locus and kidney
2 transplantation

3 Running title: CFHR deletions in kidney transplantation

4 Markkinen Salla^{1†}, Lokki Inkeri^{2,3†}, Helanterä Ilkka⁴, Ritari Jarmo¹, Partanen Jukka¹, Meri
5 Seppo^{2,5}, Hyvärinen Kati^{1,*}

6

7 ¹Research and Development, Finnish Red Cross Blood Service, Helsinki Finland

8 ²Translational Immunology Research Program, Department of Bacteriology and Immunology, Faculty
9 of Medicine, University of Helsinki, Helsinki, Finland

10 ³Heart and Lung Center, Helsinki University Hospital and University of Helsinki, Helsinki, Finland

11 ⁴Transplantation and Liver Surgery, Helsinki University Hospital and University of Helsinki, Helsinki,
12 Finland

13 ⁵Diagnostic Center, Helsinki University Hospital, Helsinki, Finland

14

15 † These authors contributed equally to this work

16

17

18

19 *Corresponding author

20 Ilkka Helanterä, MD, PhD, Associate professor

21 Helsinki University Hospital and University of Helsinki

22 Transplantation and Liver Surgery

23 PO Box 340, 00029 HUS, Helsinki, FINLAND

24 Phone +358 50 4279526

25 ilkka.helantera@helsinki.fi

26

27 ABSTRACT

28 We recently reported that a homozygous deletion in the complement factor H related
29 (*CFHR*) protein gene locus predisposed kidney transplant patients to allograft rejection. As
30 donors carried normal functional genes in the locus, the susceptibility may have resulted
31 from alloimmune reaction to CFHR proteins. However, we found no evidence for anti-CFH
32 response in the patients. It is therefore possible that the *CFHR* gene deletions and
33 consequent protein deficiencies as such affect the rejection risk. Using multiplex ligation-
34 dependent probe amplification method and genome sequencing, we confirmed that all 15
35 patients homozygous for rs7542235 GG, a SNP tagging the *CFHR3* deletion had deletions
36 of various sizes that invariably encompassed the whole of *CFHR1* gene. The lack of CFHR1
37 protein in patient plasma samples was also demonstrated by Western blotting. Plasma
38 proteomics analyses of biobank samples demonstrated that rs7542235 allele G associates
39 with significantly changed expression levels of 23 proteins (FDR <0.010). These proteins are
40 involved in various pathways, including regulation of alloimmune response and their roles in
41 transplantation outcome merit further studies. Although *CFHR* gene abnormalities have
42 been associated with kidney diseases, we observed no clinical characteristics shared by or
43 enriched in patients homozygous for *CFHR1* deletion. This suggests that the deletion as such
44 was not enriched in a baseline disease in this subgroup with a high risk for rejection. To
45 conclude, the different deletion types found in patients shared the complete deletion of the
46 *CFHR1* gene pointing to its primary role. Plasma proteomics studies show that deletion-
47 tagging allele is associated with altered expression of CFH/CFHR proteins.

48 INTRODUCTION

49 Prior matching of human leukocyte antigen (HLA), ABO blood group types, and a negative
50 anti-HLA cross-matching are the golden rule in kidney transplantation. Regardless, some of
51 the patients still experience complications after kidney transplantation. In search of novel
52 histocompatibility factors, a study by Steers *et al.*(1) reported that a homozygous gene
53 deletion of *LIMS1*, and our previous study (2) reported that homozygous gene deletion in
54 the *CFH* locus consisting of genes coding for complement factor H (*CFH*) and CFH related
55 proteins (*CFHRs*) were associated with acute rejection of the graft. There are a few mutually
56 non-exclusive mechanistic explanations to these findings. The rejection may be related to
57 alloimmune response by the patient against the protein missing from the patient but
58 expressed by the graft, hence, as such not necessarily linked to the function of the protein.
59 Alternatively, the rejection risk may be related to the function of the protein missing from
60 the patient. The functional effect can be direct, i.e., a result of the missing protein, or
61 caused by expression of the missing protein by the transplanted kidney, or it can be related
62 to complex downstream networks. A deletion of a gene and adjacent DNA segments may
63 furthermore lead to changes in the expression of some other genes that can be identified,
64 for example, using quantitative trait loci (QTL) (3–5) approaches. Steers and co-workers,
65 who reported association between *LIMS1* gene deletion and graft rejection in kidney
66 transplantation could identify a specific anti-LIMS1 antibody pointing to alloimmune
67 response against the LIMS1 protein missing from the patient. In our recent study (2), we
68 could not replicate the *LIMS1* deletion association in the set of 1025 Finnish kidney
69 transplantation patients and donors, but instead reported an association between *CFHR*
70 locus deletion and graft rejection. The *CFHR* locus contains genes encoding for *CFH*, a major
71 regulator of the alternative pathway (AP) of complement activation, and a set of related
72 genes, *CFHR1–5* (2,6). CFH inhibits AP activation both in body fluids and on cell surfaces. It
73 binds to C3b, which has become bound to self surfaces, where it inhibits local complement
74 activation. In contrast, on “foreign” targets, like microbial or virus surfaces binding of CFH to
75 surface deposited C3b is weak (7–9). The functions of CFHR1–5 proteins are becoming
76 better understood. As suggested already a long time ago (10) the CFHRs are known to
77 promote complement activity by competing with the master inhibitor CFH (6). Genetic
78 variants of *CFH* and *CFHR1–5* have been linked to the pathogenesis of some kidney diseases,

79 such as C3 glomerulopathy (11), atypical hemolytic uremic syndrome (12,13) and IgA
80 nephropathy (14). In the present study, we wanted to understand the effects of *CFHR3-1*
81 gene deletions in detail. We fine-mapped the deletion boundaries using multiple ligation-
82 dependent probe amplification (MLPA) and whole genome sequencing (WGS). We found
83 that deletions of various sizes shared a homozygous deletion of *CFHR1* gene. Proteomics of
84 plasma samples revealed that, in fact, the deletion-tagging allele resulted in plasma protein
85 level changes of at least 23 proteins. This shortlist merits further studies.

86

87 MATERIALS AND METHODS

88 *Study cohort*

89 The present study included 15 patients from the study of Markkinen *et al.* (2), who had
90 rs7542235 GG-genotype tagging for the homozygous deletion in the *CFHR3-1* locus. The
91 patients received their first kidney transplantation during 2007–2017 at the Helsinki
92 University Hospital, Helsinki, Finland. The characteristics of the whole study population
93 including the 15 patients with homozygous *CFHR3-1*-deletion tagging variant (GG) and 1010
94 patients with heterozygous (AG) or homozygous non-deletion genotype (AA) are presented
95 in **Table 1**. In total of 199 (20%) rejections were observed in our study cohort. The primary
96 outcome for these patients was biopsy-proven acute rejection, including both antibody-
97 mediated and T-cell-mediated rejections (15). Borderline changes were also included as
98 rejections. The characteristics of the 15 patients (8 in the rejection-group and 7 in the non-
99 rejection-group) with *CFHR3-1*-deletion tagging rs7542235 GG-genotype are presented in
100 **Table 2**.

101 DNA samples were extracted from whole blood at the time of histocompatibility testing for
102 transplantation, and serum samples were collected for complement-dependent cytotoxic
103 crossmatch to detect alloantibodies before and after transplantation at the Finnish Red
104 Cross Blood Service, Helsinki, Finland.

105 The clinical data were extracted from the Finnish Transplant Registry, which is a national
106 follow-up registry obliged by law (**Table 1**).

107

108 *Genotyping and imputation*

109 Genotyping and imputation procedures are explained in more detail in Markkinen et al. (2).
110 Briefly, the genotyping was performed at the Finnish Institute of Molecular Medicine
111 (FIMM), Helsinki, Finland using Illumina's Infinium Global Screening array-24 v2.0 with multi-
112 disease drop-in. The genotyped data were imputed with Finnish SISu v3 reference panel
113 consisting of high-coverage WGS data from THL Biobank cohorts (N=1768) (Pärn et al.
114 manuscript in preparation). The variants rs7542235 tagging for *CFHR*-deletion was imputed
115 and had an estimated quality measurement value, INFO-score, of 0.98.

116

117 *Multiplex ligation-dependent probe amplification*

118 MLPA was performed for 15 homozygous rs7542235 GG patients (eight with rejection,
119 seven without rejection) to screen the copy number variations in *CFH/CFHR* genomic region.
120 Additionally, we performed the analysis for control patients including eight individuals with
121 heterozygous AG-genotype (four with rejection, four without rejection) and eight individuals
122 with homozygous AA-genotype (four with rejection, four without rejection). The detailed
123 description of MLPA procedure is provided in the **Supplementary data**.

124

125 *Whole genome sequencing*

126 WGS was previously performed for three rs7542235 GG patients with rejection. The results
127 and detailed information about the WGS for these samples are provided in the main text
128 and supplementary data of our previous publication (2). Here, we sequenced seven more
129 patients with GG-genotype (five with rejection, two without rejection). Sequencing was
130 performed at FIMM, Helsinki, Finland, and the samples were sequenced with Illumina's
131 NovaSeq S4 NS4-300 run. The number of aligned bases for each sample was 20–50 Gb. The
132 input reads for each sample were around 200–500 million, and the length of reads was 151
133 base pairs. The coverage depth for the sequenced samples was 7–17x. More detailed
134 statistics for the WGS run are presented in **Supplementary Table S2**.

135

136 *Western blot for CFH/CFHR proteins*

137 In total of 15 serum samples from nine rs7542235 GG patients (five with rejection, four
138 without rejection) were available for western blot analysis of CFH, CFHR1 and CFHR2
139 expression. From the 15 serum samples, nine were collected before transplantation (pre-tx)
140 and six were collected after transplantation (post-tx). The detailed methods for western blot
141 are provided in the **Supplementary data**.

142

143 *Expression quantitative trait loci (eQTL) analyses*

144 In the eQTL analyses, we used three databases to see the impact of *CFHR3*–1 deletion
145 tagging variant rs7542235 to gene expression: 1) The FIVEx browser
146 (<https://fivex.sph.umich.edu/>) eQTL data from blood vessel and kidney samples from the
147 EBI eQTL catalogue (4); 2) the eQTLGen Consortium database (<https://www.eqtlgen.org/>)
148 including cis-eQTL, trans-eQTL and eQTS (associations between polygenic scores and gene
149 expression levels) data from 37 datasets (3) from blood samples; and 3) the Human Kidney
150 eQTL Atlas (https://susztaklab.com/Kidney_eQTL/index.php) including four studies with
151 total of 686 microdissected human kidney tubule samples (5). Each of these three databases
152 share data from the Genotype-Tissue Expression Consortium (GTEx). All the results are
153 included.

154

155 *Protein quantitative trait loci (pQTL), gene ontology and Reactome analyses*

156 We used Olink (n = 1225) and SomaScan (n = 865) pQTL plasma proteomics data of healthy
157 blood donors from FinnGen project (<https://www.finnngen.fi/en>) to see whether the
158 *CFHR3*–1 deletion tagging variant rs7542235 has effect on protein expression. False
159 detection rate (FDR) of <0.010 were considered statistically significant. The genes with FDR
160 <0.010 were included in the gene ontology (GO) enrichment analysis
161 (<https://geneontology.org/>) for each three aspects of biological process, molecular function
162 and cellular component, and Reactome pathway database (<https://reactome.org/>).

163

164 *Other statistical analyses*

165 Characteristics of patients in **Table 1** and **Table 2** were described by medians and
166 interquartile ranges (IQRs) or ranges, and frequencies and percentages. The comparison
167 between the two groups of patients with rs7542235 GG-genotype and patients with AA/AG-
168 genotype (**Table 1**), and GG-genotype with rejection and GG-genotype without rejection
169 (**Table 2**) were analyzed using the nonparametric Mann-Whitney U-test for non-normally
170 distributed data (recipient age, follow-up time, PRA I and II, HLA eplet mismatch, HLA I eplet
171 mismatch and HLA II eplet mismatch), Pearson's chi-square test for recipient sex, Fisher's
172 exact test for primary diagnosis, or Student's t-test for normally distributed data (cold
173 ischemia). The significance of variation of PRA-values in **Table 2** was not analyzed due to the
174 low frequency count. P-values <0.05 were considered statistically significant.

175

176 RESULTS

177 *Characteristics of the study population*

178 We previously reported genetic association between reduced rejection-free survival and
179 *CFHR3*Δ1-deletion tagging variant rs7542235 genotype GG (2). 15 out of 1025 patients were
180 homozygous for this deletion-tagging variant, 4% belonging to rejection-group and 1% to
181 non-rejection group.

182 The characteristics of the study groups are shown in **Table 1** and **Table 2**. In total of 53% of
183 rs7542235 GG patients had rejection, whereas the percentage among AG/AA patients was
184 only 19 (P-value <0.001). Also other diagnoses are more common among patients with
185 AG/AA patients than in the GG genotype group (P-value <0.001). The primary diagnosis of
186 hydronephrosis with ureteropelvic junction obstruction is significantly different between the
187 rs7542235 GG and AG/AA patients with P-value of 0.029 (**Table 1**). No significant difference
188 in characteristics between those with rejection and without rejection among patients with
189 rs7522235 GG genotype were found (**Table 2**). There was no enrichment of diagnoses
190 known to be linked to *CFHR* locus.

191

192 *Multiplex ligation-dependent probe amplification*

193 MLPA confirmed that all 15 rs7542235 GG patients had homozygous deletions of different
194 sizes at the *CFH/CFHR* locus, three different types are depicted in the **Figure 1**. The shared
195 feature of all samples was a homozygous deletion of *CFHR1* gene.

196 As assumed, eight patients with rs7542235 genotype AA had no deletions at the *CFHR* locus,
197 and eight patients with heterozygous AG genotype carried a heterozygous deletion
198 encompassing both the *CFHR1* and *CFHR3* genes (**Figure 2**).

199

200 *Whole genome sequencing*

201 WGS (**Figure 3**) confirmed the results of MLPA; all seven rs7542235 GG patients had
202 homozygous deletions of different sizes but they shared the deletion of the *CFHR1* gene
203 (**Supplementary Figure S1**). In addition to homozygous deletions, WGS results confirmed
204 the findings of MLPA results showing that 5 out of 10 patients carried heterozygous
205 deletions (**Figure 3C and D**).

206

207 *Western blot of CFH/CFHR proteins*

208 The western blot run showed that 9/9 of serum samples from individuals with rs7542235
209 GG genotype lacked the *CFHR1* protein (**Figure 4**). The results are in line to those obtained
210 from genetic MLPA and WGS analyses. The more detailed description and genotypes for
211 each serum sample is shown in **Table 3**.

212

213 *Expression quantitative trait loci analyses*

214 To understand whether the gene deletions or the tagging variant rs7542235 regulates the
215 expression of other genes we screened the eQTL databases for rs7542235. The results are
216 presented in **Table 4**. When searching for the *CFHR3–1* deletion-tagging variant rs7542235
217 from the FIVEx database, the allele G was associated with the lower expression levels of

218 *CFHR1*, *-3*, and *-4* genes. All the results from FIVEx were from GTEx study, including data
219 from blood vessel and kidney samples. Based on the eQTLGen Consortium database
220 consisting of only blood samples, rs7542235 G was associated merely with the higher
221 expression level of *CFH*, with a Z-score of 10.05 and P-value of 8.88×10^{-24} . When screening
222 the Human Kidney eQTL Atlas having samples from kidney tubule, we found two statistically
223 significant associations in genes *CFHR1* and *CFHR3*, with P-values of 2.73×10^{-58} and $4.01 \times$
224 10^{-10} , respectively. The beta-values for these findings were negative indicating reduced
225 expression.

226

227 *Protein quantitative trait loci, gene ontology and Reactome analyses*

228 When analysing the effect of variant rs7542235 allele G on protein expression, in total of 23
229 proteins were shown to be differentially expressed. The Olink results showed three genes to
230 be associated with the *CFHR*-deletion tagging variant with FDR <0.010; *CFH*, *CFHR2* and
231 *CFHR5* (**Table 5**), each of having positive beta-value and thus meaning an increase in
232 expression. SomaScan data resulted in total of 22 proteins to be differentially expressed
233 with FDR <0.010. In concordance to Olink results, also SomaScan showed an increase in
234 expression for *CFH* and *CFHR5*, and as was assumed, the *CFHR3*Δ1 deletion tagging variant
235 resulted in decreased expression of *CFHR1* gene. Other differentially expressed genes with
236 FDR <0.010 included, e.g., prolactin receptor (*PRLR*) with decreasing expression levels and
237 Kirre Like Nephric Family Adhesion Molecule 1 (*KIRREL1*) with increased expression. In the
238 GO enrichment analysis of molecular function annotation, four out of 23 genes (*CFH*, *CFHR1*,
239 *CFHR2* and *CFHR5*) were associated to three functions of complement component C3b
240 binding, opsonin binding and complement binding with FDRs 8.06×10^{-6} , 3.71×10^{-5} and 5.34
241 $\times 10^{-5}$, respectively (**Supplementary table S4**). The Reactome pathway analysis showed that
242 four out of 23 genes (*CFH*, *CFHR1*, *CFHR2* and *CFHR5*) were associated to two pathways;
243 regulation of complement cascade and complement cascade with FDR 1.00×10^{-3} for both
244 (**Supplementary table S4**).

245

246 DISCUSSION

247 We reported earlier that homozygosity for variant rs7542235 allele G, tagging deletions at
248 the *CFHR3-1* locus, predisposed patients to kidney allograft rejection. To understand better
249 the mechanisms behind the association, we here fine-mapped the deletion boundaries and
250 studied the effects of the gene deletion on protein levels. Our results show that kidney
251 transplantation patients with GG genotype of deletion-tagging variant rs7542235 have gene
252 deletions of various sizes and types in the *CFHR* locus. The different deletion types,
253 however, shared the complete deletion of the *CFHR1* gene pointing to its primary role. The
254 lack of expressed CFHR1 protein in homozygotes could be confirmed by Western blot
255 analysis. We also showed by using both eQTL databases and proteomics studies that the
256 rs7542235 allele G is associated with differences in plasma expression levels of various
257 proteins, not merely with those encoded by genes at the *CFH/CFHR* locus but others as well.

258 It is of note that the patients having the homozygous *CFHR1* deletion did not share any
259 particular type of kidney disease. This is understandable, because e.g., C3 glomerulopathy or
260 CFHR5 nephropathy are known to be associated with an increased rather than decreased
261 activity of the CFHR proteins. The increased activity is assumed to be due to a tendency to
262 make dimers that more efficiently compete with CFH. Only an autoimmune form of
263 haemolytic uremic syndrome, with autoantibodies against CFH, is linked to *CFHR3-1*
264 deficiency. The spectrum of kidney diseases in patients with homozygous *CFHR1* deletion
265 was typical to adults receiving a kidney transplant in Finland. It did not involve complement-
266 mediated diseases.

267 As mentioned above, a deletion in the *CFHR3-1* locus may promote formation of anti-CFH
268 antibodies (13,16). Our previous results showed that there were no *de novo* anti-CFH
269 antibodies detected from serum samples of patients with rs7542235 GG genotype receiving
270 a graft from a donor of either AG or AA genotype. This suggests that the deletion itself
271 might not lead to alloimmune response, but could as such explain the association with
272 rejection or even with the primary diseases of the patients. However, the possibility that
273 CFHR1 could become the target of cell-mediated immunity has not been excluded.

274 Sequence and copy number variations in the human *CFH* and *CFHR1-5* gene cluster have
275 been linked to the kidney disorders such as C3 glomerulopathy (11), and IgA nephropathy

276 (14). It has been shown that homozygous deletion and deficiency of *CFHR3-1* has a
277 protective effect in IgA nephropathy (17) and age-related macular disease (AMD) (18). A
278 hybrid form of the *CFHR3-1* gene has been associated with an increased risk for C3
279 glomerulopathy (11). This finding indicates that an overactivity of CFHRs is linked to
280 complement-mediated diseases.

281 A recent study by Sun *et al.* discovered that a mismatches in *LIMS1* was associated with
282 death-censored graft loss, and are in expression quantitative trait loci in immune cells for
283 *GCC2*, a gene encoding for a protein involved in mannose-6-phosphate receptor recycling
284 and thus possibly triggering immune responses in the recipient (19). As shown by the eQTL
285 and pQTL results, it is plausible that the homozygous deletion of *CFHR1* shared by all
286 patients influences the expression levels of other *CFHR* genes and proteins, and thus could
287 alter the complement activation. The variant rs7542235 allele G is associated with an
288 increased protein expression of CFH and decreased expression of CFHR1. While CFH inhibits
289 complement activation and protects human endothelial cells, CFHR1 has an opposite effect.
290 CFH is a regulator of the C3 convertase and promotes degradation of C3b and opsonization
291 of foreign pathogens with iC3b that results in phagocytosis. CFHR1 competes with CFH for
292 these activities, thereby increasing complement activation. It thus indirectly promotes
293 C3/C5 convertase activity and complement membrane attack complex assembly. By
294 inhibiting CFH binding to C3b, CFHR1 promotes C5a formation and consequent
295 inflammation. In the absence of CFHR1 and CFHR3, local CFH binding and activity would be
296 increased, resulting in suppression of complement activation, but, on the other hand,
297 possibly also to an impaired ability to handle injured tissue components.

298 The capillaries of kidney glomerulus are continually perfused by large volumes of blood, so
299 the CFH/CFHR complement proteins present in plasma are in direct contact with the
300 membrane. Due to filtration of water into urine, the concentration of complement proteins
301 increases as plasma flows through the kidney, thus exposing these glomerular cells and
302 surfaces to higher concentrations of CFH/CFHR proteins than are found elsewhere in the
303 body. This could explain why kidney is relatively sensitive to any complement deficiencies.
304 (20)

305 Other differentially expressed genes based on proteomics data included *PRLR* and *KIRREL1*.
306 Prolactin (PRL) is an endocrine hormone that has several physiological effects including
307 immune system regulation and anti-inflammatory effects. It can trigger the production of
308 proinflammatory cytokines, also having several anti-inflammatory effects that can reduce
309 hyperinflammation (21). Prolactin exerts its effects through PRL receptors (PRLRs). *KIRREL1*,
310 also known as *NEPH1*, is a member of the NEPH protein family and is expressed in kidney
311 podocytes, cells involved in ensuring size- and charge-selective ultrafiltration. Mutations in
312 *KIRREL1* gene has been linked to hereditary nephrotic syndrome.(22)

313 In conclusion, we found that patients with rs7542235 GG genotype shared a homozygous
314 deletion of the *CFHR1* gene. Our plasma proteomics studies also show that deletion-tagging
315 allele G is associated with altered expression of CFH/CFHR proteins and might thus be
316 involved in regulation of complement system.

317

318 AUTHOR CONTRIBUTIONS STATEMENT

319 S. Markkinen, J. Partanen and K. Hyvärinen planned the study, interpreted the results and
320 drafted the manuscript; S. Markkinen, I. Lokki and K. Hyvärinen carried out the genome data
321 analyses; the MLPA and western blot analyses and interpretation of the results of these
322 methods were carried out by I. Lokki, S. Markkinen and S. Meri; S. Markkinen executed *in*
323 *silico* database searches; J. Ritari combined the pQTL summary statistics; I. Helanterä
324 provided clinical data and expertise; all authors contributed to the final version of the
325 manuscript.

326

327 CONFLICT OF INTEREST STATEMENT

328 The authors have no conflicts of interest to declare.

329

330 ACKNOWLEDGEMENT

331 We want to thank Maria Semenova, BSc, for help in collecting the serum samples. We also
332 want to thank Lauri Snellman, biotechnology engineer, for help in laboratory with MLPA,

333 and Marcel Messing, PhD, for help with the western blot method. The THL Biobank's SISu v3
334 Imputation reference panel used for the research were obtained from THL Biobank (study
335 number: BB2019_12). We thank all study participants for their generous participation in
336 biobank research. We also want to thank the Sequencing Informatics Team, FIMM Human
337 Genomics, University of Helsinki for the WGS analyses. We want to acknowledge the
338 participants and investigators of FinnGen study. The FinnGen project is funded by two
339 grants from Business Finland (HUS 4685/31/2016 and UH 4386/31/2016) and the following
340 industry partners: AbbVie Inc., AstraZeneca UK Ltd, Biogen MA Inc., Bristol Myers Squibb
341 (and Celgene Corporation & Celgene International II Sàrl), Genentech Inc., Merck Sharp &
342 Dohme LCC, Pfizer Inc., GlaxoSmithKline Intellectual Property Development Ltd., Sanofi US
343 Services Inc., Maze Therapeutics Inc., Janssen Biotech Inc, Novartis Pharma AG, and
344 Boehringer Ingelheim International GmbH. Following biobanks are acknowledged for
345 delivering biobank samples to FinnGen: Auria Biobank (www.auria.fi/biopankki), THL
346 Biobank (www.thl.fi/biobank), Helsinki Biobank (www.helsinginbiopankki.fi), Biobank
347 Borealis of Northern Finland ([https://www.pshp.fi/Tutkimus-ja-](https://www.pshp.fi/Tutkimus-ja-opetus/Biopankki/Pages/Biobank-Borealis-briefly-in-English.aspx)
348 [opetus/Biopankki/Pages/Biobank-Borealis-briefly-in-English.aspx](https://www.pshp.fi/Tutkimus-ja-opetus/Biopankki/Pages/Biobank-Borealis-briefly-in-English.aspx)), Finnish Clinical Biobank
349 Tampere ([www.tays.fi/en-](http://www.tays.fi/en-US/Research_and_development/Finnish_Clinical_Biobank_Tampere)
350 [US/Research_and_development/Finnish_Clinical_Biobank_Tampere](http://www.tays.fi/en-US/Research_and_development/Finnish_Clinical_Biobank_Tampere)), Biobank of Eastern
351 Finland (www.ita-suomenbiopankki.fi/en), Central Finland Biobank ([www.ksshp.fi/fi-](http://www.ksshp.fi/fi-FI/Potilaalle/Biopankki)
352 [FI/Potilaalle/Biopankki](http://www.ksshp.fi/fi-FI/Potilaalle/Biopankki)), Finnish Red Cross Blood Service Biobank
353 (www.veripalvelu.fi/verenluovutus/biopankkitoiminta), Terveystalo Biobank
354 (www.terveystalo.com/fi/Yritystietoa/Terveystalo-Biopankki/Biopankki/) and Arctic Biobank
355 ([https://www oulu.fi/en/university/faculties-and-units/faculty-medicine/northern-finland-](https://www oulu.fi/en/university/faculties-and-units/faculty-medicine/northern-finland-birth-cohorts-and-arctic-biobank)
356 [birth-cohorts-and-arctic-biobank](https://www oulu.fi/en/university/faculties-and-units/faculty-medicine/northern-finland-birth-cohorts-and-arctic-biobank)). All Finnish Biobanks are members of BBMRI.fi
357 infrastructure (www.bbMRI.fi). Finnish Biobank Cooperative -FINBB (<https://finbb.fi/>) is the
358 coordinator of BBMRI-ERIC operations in Finland. The Finnish biobank data can be accessed
359 through the Fingenious[®] services (<https://site.fingenious.fi/en/>) managed by FINBB.

360

361 FUNDING STATEMENT

362 The study was supported by funding from the Government of Finland VTR funding,
363 Munuaissäätiö (to S. Markkinen) and Suomen Transplantaatiokirurginen yhdistys ry (to S.
364 Markkinen), the State Subsidy to Hospitals (TYH2019311 and TYH2022315 to S. Meri),
365 Helsinki University Hospital Diagnostic Center funds (Y780023006, to S. Meri) and Sigrid
366 Jusélius Foundation (to S. Meri). FinnGen is funded by two grants from Business Finland
367 (HUS 4685/31/2016 and UH 4386/31/2016) and twelve industry partners (AbbVie Inc,
368 AstraZeneca UK Ltd, Biogen MA Inc, Celgene Corporation, Celgene International II Sarl,
369 Genentech Inc, GlaxoSmithKline, Janssen Biotech Inc. Maze Therapeutics Inc., Merck Sharp
370 & Dohme Corp, Novartis, Pfizer Inc., Sanofi). The funders and biobanks had no role in study
371 design, data collection and analysis, decision to publish, or preparation of the manuscript.

372

373 ETHICS STATEMENT

374 The study conforms to the principles of the Declaration of Helsinki and has been approved
375 by the ethics committee of Helsinki University Hospital (HUS/1873/2018) and the Finnish
376 National Supervisory Authority for Welfare and Health (V/9161/2019).

377 REFERENCES

- 378 1. Steers NJ, Li Y, Drace Z, D'Addario JA, Fischman C, Liu L, et al. Genomic Mismatch at
379 *LIMS1* Locus and Kidney Allograft Rejection. *N Engl J Med*. 2019;380(20):1918–28.
- 380 2. Markkinen S, Helanterä I, Lauronen J, Lempinen M, Partanen J, Hyvärinen K.
381 Mismatches in gene deletions and kidney-related proteins as candidates for
382 histocompatibility factors in kidney transplantation. *Kidney Int Reports*.
383 2022;7(11):2484–94.
- 384 3. Vösa U, Claringbould A, Westra HJ, Bonder MJ, Deelen P, Zeng B, et al. Large-scale cis-
385 and trans-eQTL analyses identify thousands of genetic loci and polygenic scores that
386 regulate blood gene expression. *Nat Genet* [Internet]. 2021 Sep 1 [cited 2023 May
387 11];53(9):1300–10. Available from: <https://pubmed.ncbi.nlm.nih.gov/34475573/>
- 388 4. Kwong A, Boughton AP, Wang M, Vandehaar P, Boehnke M, Abecasis G, et al. FIVEx:
389 an interactive eQTL browser across public datasets. *Bioinformatics* [Internet]. 2022
390 Jan 15 [cited 2023 Oct 27];38(2):559–61. Available from:
391 <https://pubmed.ncbi.nlm.nih.gov/34459872/>
- 392 5. Liu H, Doke T, Guo D, Sheng X, Ma Z, Park J, et al. Epigenomic and transcriptomic
393 analyses define core cell types, genes and targetable mechanisms for kidney disease.
394 *Nat Genet* [Internet]. 2022 Jul 1 [cited 2023 May 25];54(7):950–62. Available from:
395 <https://pubmed.ncbi.nlm.nih.gov/35710981/>
- 396 6. Lucientes-Contiente L, Márquez-Tirado B, Goicoechea de Jorge E. The Factor H
397 protein family: The switchers of the complement alternative pathway. Vol. 313,
398 *Immunological Reviews*. *Immunol Rev*; 2023. p. 25–45.
- 399 7. Rodríguez De Córdoba S, Esparza-Gordillo J, Goicoechea De Jorge E, Lopez-Trascasa
400 M, Sánchez-Corral P. The human complement factor H: Functional roles, genetic
401 variations and disease associations. *Mol Immunol* [Internet]. 2004 Jun [cited 2023 Sep
402 20];41(4):355–67. Available from: <https://pubmed.ncbi.nlm.nih.gov/15163532/>
- 403 8. Meri S, Pangburn MK. Discrimination between activators and nonactivators of the
404 alternative pathway of complement: regulation via a sialic acid/polyanion binding site

- 405 on factor H. *Proc Natl Acad Sci U S A* [Internet]. 1990 [cited 2023 Nov
406 23];87(10):3982–6. Available from: <https://pubmed.ncbi.nlm.nih.gov/1692629/>
- 407 9. Meri S. Self-nonsel self discrimination by the complement system. *FEBS Lett* [Internet].
408 2016 Aug 1 [cited 2023 Nov 23];590(15):2418–34. Available from:
409 <https://pubmed.ncbi.nlm.nih.gov/27393384/>
- 410 10. Närkiö-Mäkelä M, Hellwage J, Tahkokallio O, Meri S. Complement-regulator factor H
411 and related proteins in otitis media with effusion. *Clin Immunol* [Internet]. 2001 [cited
412 2023 Nov 23];100(1):118–26. Available from:
413 <https://pubmed.ncbi.nlm.nih.gov/11414752/>
- 414 11. Malik TH, Lavin PJ, De Jorge EG, Vernon KA, Rose KL, Patel MP, et al. A hybrid CFHR3-1
415 gene causes familial C3 glomerulopathy. *J Am Soc Nephrol* [Internet]. 2012 Jul [cited
416 2023 Nov 2];23(7):1155–60. Available from:
417 <https://pubmed.ncbi.nlm.nih.gov/22626820/>
- 418 12. Józsi M, Licht C, Strobel S, Zipfel SLH, Richter H, Heinen S, et al. Factor H
419 autoantibodies in atypical hemolytic uremic syndrome correlate with CFHR1/CFHR3
420 deficiency. *Blood* [Internet]. 2008 [cited 2023 Nov 9];111(3):1512–4. Available from:
421 <https://pubmed.ncbi.nlm.nih.gov/18006700/>
- 422 13. Moore I, Strain L, Pappworth I, Kavanagh D, Barlow PN, Herbert AP, et al. Association
423 of factor H autoantibodies with deletions of CFHR1, CFHR3, CFHR4, and with
424 mutations in CFH, CFI, CD46, and C3 in patients with atypical hemolytic uremic
425 syndrome. *Blood*. 2010;115(2):379–87.
- 426 14. Gharavi AG, Kiryluk K, Choi M, Li Y, Hou P, Xie J, et al. Genome-wide association study
427 identifies susceptibility loci for IgA nephropathy. *Nat Genet* [Internet]. 2011 Feb [cited
428 2023 Nov 2];43(4):321–9. Available from:
429 <https://pubmed.ncbi.nlm.nih.gov/21399633/>
- 430 15. Roufosse C, Simmonds N, Clahsen-Van Groningen M, Haas M, Henriksen KJ, Horsfield
431 C, et al. A 2018 Reference Guide to the Banff Classification of Renal Allograft
432 Pathology. *Transplantation*. 2018;102(11):1795–814.

- 433 16. Józsi M, Licht C, Strobel S, Zipfel SLH, Richter H, Heinen S, et al. Factor H
434 autoantibodies in atypical hemolytic uremic syndrome correlate with CFHR1/CFHR3
435 deficiency. *Blood*. 2008;111(3):1512–4.
- 436 17. Kiryluk K, Novak J. The genetics and immunobiology of IgA nephropathy. *J Clin Invest*
437 [Internet]. 2014 Jun 2 [cited 2023 Nov 9];124(6):2325–32. Available from:
438 <https://pubmed.ncbi.nlm.nih.gov/24892706/>
- 439 18. Hughes AE, Orr N, Esfandiary H, Diaz-Torres M, Goodship T, Chakravarthy U. A
440 common CFH haplotype, with deletion of CFHR1 and CFHR3, is associated with lower
441 risk of age-related macular degeneration. *Nat Genet* [Internet]. 2006 Oct [cited 2023
442 Nov 9];38(10):1173–7. Available from: <https://pubmed.ncbi.nlm.nih.gov/16998489/>
- 443 19. Sun Z, Zhang Z, Banu K, Gibson IW, Colvin RB, Yi Z, et al. Multiscale genetic
444 architecture of donor-recipient differences reveals intronic LIMS1 mismatches
445 associated with kidney transplant survival. *J Clin Invest* [Internet]. 2023 Sep 7 [cited
446 2023 Oct 25]; Available from: <https://pubmed.ncbi.nlm.nih.gov/37676733/>
- 447 20. Thurman JM, Harrison RA. The susceptibility of the kidney to alternative pathway
448 activation-A hypothesis. *Immunol Rev* [Internet]. 2023 Jan 1 [cited 2023 Nov
449 23];313(1):327–38. Available from: <https://pubmed.ncbi.nlm.nih.gov/36369971/>
- 450 21. Rasmi Y, Jalali L, Khalid S, Shokati A, Tyagi P, Ozturk A, et al. The effects of prolactin on
451 the immune system, its relationship with the severity of COVID-19, and its potential
452 immunomodulatory therapeutic effect. *Cytokine* [Internet]. 2023 Sep 1 [cited 2023
453 Nov 2];169:156253. Available from: [/pmc/articles/PMC10247151/](https://pubmed.ncbi.nlm.nih.gov/36369971/)
- 454 22. Sellin L, Huber TB, Gerke P, Quack I, Pavenstädt H, Walz G. NEPH1 defines a novel
455 family of podocin interacting proteins. *FASEB J*. 2003;17(1):115–7.
- 456

457 **Table 1. Characteristics of the study cohort.**

Characteristic	All patients, n = 1025	Patients with rs7542235 GG genotype, n = 15	Patients with rs7542235 AA/AG genotype, n = 1010	P-value ^a
Age (median, range)	57 (18-79)	58 (36-74)	57 (18-79)	0.639 ^c
Sex, n (%)				1 ^d
Male	703 (69)	10 (67)	693 (69)	
Female	322 (31)	5 (33)	317 (31)	
Rejection, n (%)	199 (19)	8 (53)	191 (19)	<0.001 ^d
T cell-mediated, n (%)	178 (17)	6 (75)	172 (90)	
Antibody-mediated, n (%)	21 (3)	2 (25)	19 (10)	
Primary diagnosis, n (%)				
Polycystic kidney disease	202 (20)	3 (20)	199 (20)	1 ^e
Diabetic nephropathy with type1 diabetes	150 (15)	2 (13)	148 (15)	1 ^e
IgA nephropathy	106 (10)	2 (13)	104 (10)	0.662 ^e
Chronic kidney disease, unspecified	105 (10)	2 (13)	103 (10)	0.660 ^e
Glomerular disorder in amyloidosis	6 (1)	1 (7)	5 (1)	0.085 ^e
Glomerular disorder in polyarteritis nodosa	4 (0)	1 (7)	3 (0)	0.057 ^e
Glomerular disorder in granulomatosis with polyangiitis	10 (1)	1 (7)	9 (1)	0.137 ^e
Hydronephrosis with ureteropelvic junction obstruction	2 (0)	1 (7)	1 (0)	0.029 ^e
Other chronic kidney disease	22 (2)	1 (7)	21 (2)	0.279 ^e
Polycystic kidney disease, unspecified	9 (1)	1 (7)	8 (1)	0.124 ^e
Other	409 (40)	0 (0)	409 (40)	<0.001 ^e
	Median (IQR)			
Death-censored follow-up time, months	37 (18-63)	37 (9-50)	37 (18-63)	0.402 ^c
PRA I >0, % ^b	22 (5-55)	52 (20-64)	21 (5-55)	0.290 ^c
PRA II >0, % ^b	27 (12-60)	17 (17-58)	27 (12-60)	0.702 ^c
Cold ischemia, hours	20 (17-23)	21 (19-22)	20 (17-23)	0.569 ^e
HLA eplet mismatch sum, n	27 (19-36)	28 (17-46)	27 (19-36)	0.808 ^c
HLA I eplet mismatch sum, n	11 (7-15)	9 (7-13)	11 (7-15)	0.459 ^c
HLA II eplet mismatch sum, n	16 (7-24)	22 (8-28)	16 (7-24)	0.388 ^c

458 HLA, human leukocyte antigen; IgA, Immunoglobulin A; IQR, interquartile range; PRA, panel-reactive antibody.

459 ^aThe significance of variation was calculated between rs7542235 GG vs. AG/AA groups.

460 ^bThe medians of PRA values are calculated only from patients with PRA I >0 and PRA II >0.

461 ^cThe Mann–Whitney U-test.

462 ^dThe Pearson chi-square test.

463 ^eFisher’s exact test.

464 ^fThe Student’s t-test.

465 **Table 2. Characteristics of the 15 patients with rs7542235 GG-genotype tagging for homozygous *CFHR3*1**
 466 **deletion. Rejection vs. non-rejection group.**

Characteristic	Patients with rs7542235 GG genotype, n = 15	Patients with rs7542235 GG genotype with rejection, n = 8	Patients with rs7542235 GG genotype without rejection, n = 7	P-value ^a
Age (median, range)	58 (36-74)	52 (36-73)	61 (53-74)	0.064 ^c
Sex, n (%)				0.854 ^d
Male	10 (67)	6 (75)	4 (57)	
Female	5 (33)	2 (25)	3 (43)	
Rejection, n (%)	8 (50)	8 (100)	0 (0)	
T cell-mediated, n (%)	6 (38)	6 (75)	0 (0)	
Antibody-mediated, n (%)	2 (12)	2 (25)	0 (0)	
Primary diagnosis, n (%)				
Polycystic kidney disease	3 (20)	0 (0)	3 (43)	0.076 ^e
Diabetic nephropathy with type I diabetes	2 (13)	1 (12.5)	1 (14)	1 ^e
IgA nephropathy	2 (13)	2 (25)	0 (0)	0.466 ^e
Chronic kidney disease, unspecified	2 (13)	2 (25)	0 (0)	0.466 ^e
Glomerular disorder in amyloidosis	1 (7)	1 (12.5)	0 (0)	1 ^e
Glomerular disorder in polyarteritis nodosa	1 (7)	0 (0)	1 (14)	0.466 ^e
Glomerular disorder in granulomatosis with polyangiitis	1 (7)	1 (12.5)	0 (0)	1 ^e
Hydronephrosis with ureteropelvic junction obstruction	1 (7)	0 (0)	1 (0)	0.466 ^e
Other chronic kidney disease	1 (7)	0 (0)	1 (14)	0.466 ^e
Polycystic kidney disease, unspecified	1 (7)	1 (12.5)	0 (0)	1 ^e
	Median (IQR)			
Follow-up time, months	37 (9-50)	29 (9-40)	41 (24-70)	0.189 ^c
PRA I >0, % ^b	52 (20-64)	52 (36-62)	36 (22-50)	NA ^f
PRA II >0, % ^b	17 (17-58)	17 (17-17) ^g	99 (99-99) ^h	NA ^f
Cold ischemia, hours	21 (19-22)	22 (19-23)	21 (19-22)	0.491 ^f
HLA eplet mismatch sum, n	28 (17-46)	38 (23-49)	27 (14-33)	0.182 ^c
HLA I eplet mismatch sum, n	9 (7-13)	12 (7-19)	9 (8-11)	0.521 ^c
HLA II eplet mismatch sum, n	22 (8-28)	23 (14-30)	8 (7-25)	0.269 ^c

467 HLA, human leukocyte antigen; IgA, Immunoglobulin A; IQR, interquartile range; PRA, panel-reactive antibody.

468 ^aThe significance of variation was calculated between rejection and non-rejection group of patients with
 469 rs7542235 GG-genotype.

470 ^bThe medians of PRA values are calculated only from patients with PRA I >0 and PRA II >0.

471 ^cThe Mann–Whitney U-test.

472 ^dThe Pearson chi-square test.

473 ^eFisher’s exact test.

474 ^fThe significance of variation was not analyzed due to the low frequency count.

475 ^gn = 2

476 ^hn = 1

477 ^fThe Student’s t-test.

478

479 **Table 3. Detailed description of serum samples.**

Sample ID (pseudonymized)	Sample number in the Figure 4	Pre-tx sample	Post-tx sample	The region for homozygous deletion according to MLPA/WGS	The region for heterozygous deletion according to MLPA/WGS	Rejection*
ABGR4XFUNH	1	x		CFHR3 (exons 1-6), CFHR1 (exons 1-6)		0
ABGR4XFUNH	2		x	CFHR3 (exons 1-6), CFHR1 (exons 1-6)		0
BCZORKR4A3	3	x		CFHR3 (exons 1-6), CFHR1 (exons 1-6)		0
DGYMLR5QCF	4	x		no deletion control sample		0
EN257NXZIH	5	x		CFHR3 (exons 1-6), CFHR1 (exons 1-6)		0
NQZTUVJ6JA	6	x		CFHR3 (exons 1-6), CFHR1 (exons 1-6)		0
3RVWTIW47P	7	x		CFHR3 (exons 1-6), CFHR1 (exons 1-6)		1
3RVWTIW47P	8		x	CFHR3 (exons 1-6), CFHR1 (exons 1-6)		1
ADCKGCMCUK	9	x		CFHR3 (exons 1-6), CFHR1 (exons 1-6)		1
ADCKGCMCUK	10		x	CFHR3 (exons 1-6), CFHR1 (exons 1-6)		1
JUIHLJXRHX	11	x		CFHR1 (exons 1-6)	CFHR3 (exons 1-6), CFHR4 (exons 1-10)	1
JUIHLJXRHX	12		x	CFHR1 (exons 1-6)	CFHR3 (exons 1-6), CFHR4 (exons 1-10)	1
QDM2EBUWCF	13	x		CFHR3 (exons 1-6), CFHR1 (exons 1-6)		1
QDM2EBUWCF	14		x	CFHR3 (exons 1-6), CFHR1 (exons 1-6)		1
V53C3LDXJW	15	x		CFHR3 (exon 6), CFHR1 (exons 1-6)	CFHR3 (exons 1-4), CFHR4 (exons 1-6)	1
V53C3LDXJW	16		x	CFHR3 (exon 6), CFHR1 (exons 1-6)	CFHR3 (exons 1-4), CFHR4 (exons 1-6)	1

480 CFHR, complement factor H related; MLPA, multiplex ligation-dependent probe amplification; WGS, whole
 481 genome sequencing; *Acute rejection status 0 = no rejection, 1 = rejection

482

483 **Table 4. eQTL associations of *CFHR3* deletion tagging variant rs7542235.**

FIVEx						
Gene	Tissue	Chromosome	Assessed allele	Other allele	Effect size	P-value
CFHR1	blood vessel	1	G	A	-0.48	7.59×10^{-06}
CFHR1	kidney	1	G	A	-1.68	0.00
CFHR1	blood vessel	1	G	A	-0.43	0.02
CFHR1	blood vessel	1	G	A	-0.08	0.35
CFHR3	blood vessel	1	G	A	-0.92	1.17×10^{-23}
CFHR3	blood vessel	1	G	A	-0.78	1.91×10^{-16}
CFHR3	blood vessel	1	G	A	-0.96	4.17×10^{-11}
CFHR3	kidney	1	G	A	-1.64	0.00
CFHR4	kidney	1	G	A	-0.98	0.02

eQTLGen Consortium						
Gene	Tissue	Chromosome	Assessed allele	Other allele	Z-score	P-value
CFH	Blood	1	G	A	10.05	8.88×10^{-24}

Human Kidney eQTL Atlas						
Gene	Tissue	Chromosome	Assessed allele	Other allele	Beta*	P-value
CFHR1	kidney tubule	1	G	A	-0.77	2.73×10^{-58}
CFHR3	kidney tubule	1	G	A	-0.33	4.01×10^{-10}

484 *Effect size (Beta) is reported with respect to the alternate allele

485

486

487 **Table 5. pQTL associations of *CFHR3* deletion tagging variant rs7542235 in Olink and SomaScan data.**

Olink (n = 1225)						
Gene	Chromosome	Assessed allele	Other allele	Beta	P-value	FDR
CFH	1	G	A	0.415	2.335×10^{-12}	5.794×10^{-08}
CFHR2	1	G	A	0.375	2.542×10^{-10}	3.154×10^{-06}
CFHR5	1	G	A	0.329	2.970×10^{-08}	2.457×10^{-04}
SomaScan (n = 865)						
Gene	Chromosome	Assessed allele	Other allele	Beta	P-value	FDR
AKR1B10	1	G	A	-0.870	6.008×10^{-37}	2.171×10^{-32}
CFH	1	G	A	0.366	1.813×10^{-07}	0.001
CFHR1	1	G	A	-0.821	1.053×10^{-33}	3.803×10^{-29}
CFHR5	1	G	A	0.402	9.306×10^{-09}	3.955×10^{-05}
DYNLT3	1	G	A	0.365	1.946×10^{-07}	0.001
F13B	1	G	A	0.434	5.307×10^{-10}	2.950×10^{-06}
GLT8D1	1	G	A	-0.408	5.618×10^{-09}	2.706×10^{-05}
KIRREL1	1	G	A	0.353	4.784×10^{-07}	0.002
LRP1B	1	G	A	-0.344	9.862×10^{-07}	0.003
MAN1B1	1	G	A	0.445	1.969×10^{-10}	1.294×10^{-06}
MYCT1	1	G	A	-0.327	3.344×10^{-06}	0.010
NAGLU	1	G	A	-0.627	1.114×10^{-19}	1.341×10^{-15}
NDUFS4	1	G	A	0.643	1.077×10^{-20}	1.556×10^{-16}
OTOR	1	G	A	-0.406	6.562×10^{-09}	2.964×10^{-05}
PRLR	1	G	A	-1.029	9.618×10^{-55}	6.950×10^{-50}
RIPPLY3	1	G	A	0.610	1.142×10^{-18}	1.179×10^{-14}
RPS6KA1	1	G	A	-0.417	2.676×10^{-09}	1.381×10^{-05}
SCRN3	1	G	A	0.553	1.627×10^{-15}	1.307×10^{-11}
TST	1	G	A	0.479	6.902×10^{-12}	4.988×10^{-08}
UGT2B15	1	G	A	0.555	1.254×10^{-15}	1.132×10^{-11}
ULBP2	1	G	A	0.439	3.291×10^{-10}	1.981×10^{-06}
ZDHHC4	1	G	A	0.326	3.497×10^{-06}	0.010

488 FDR, false detection rate

489

490 FIGURE LEGENDS

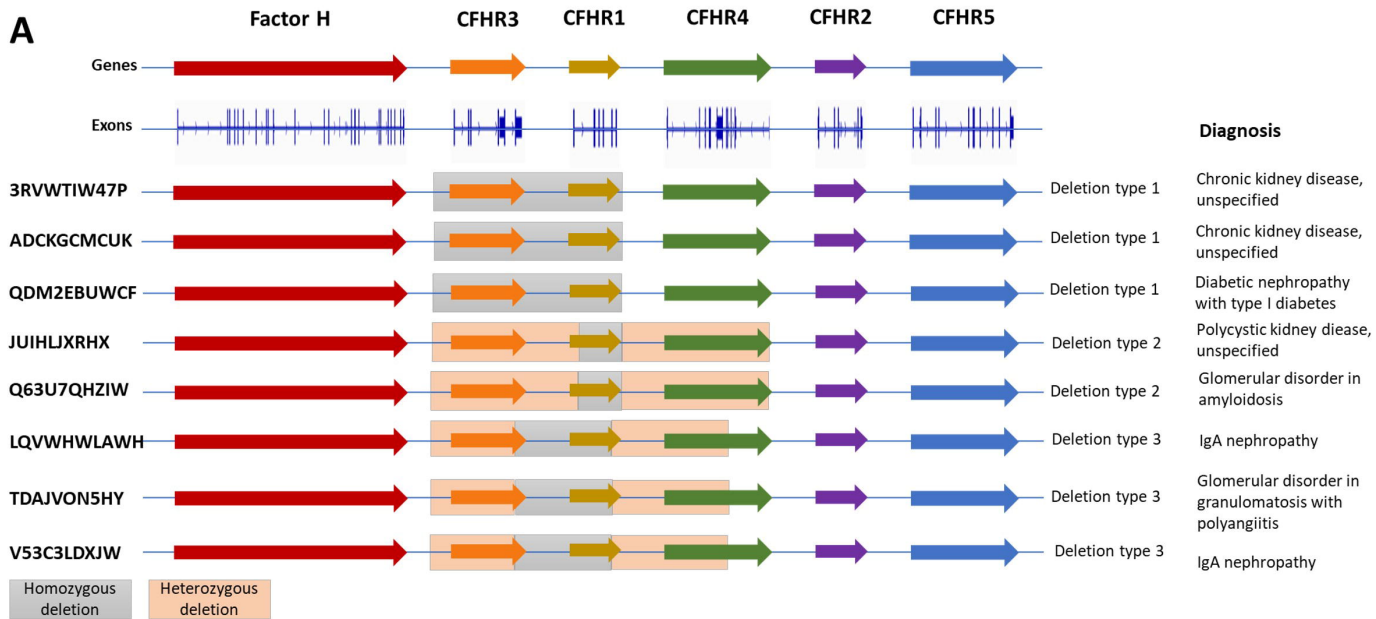
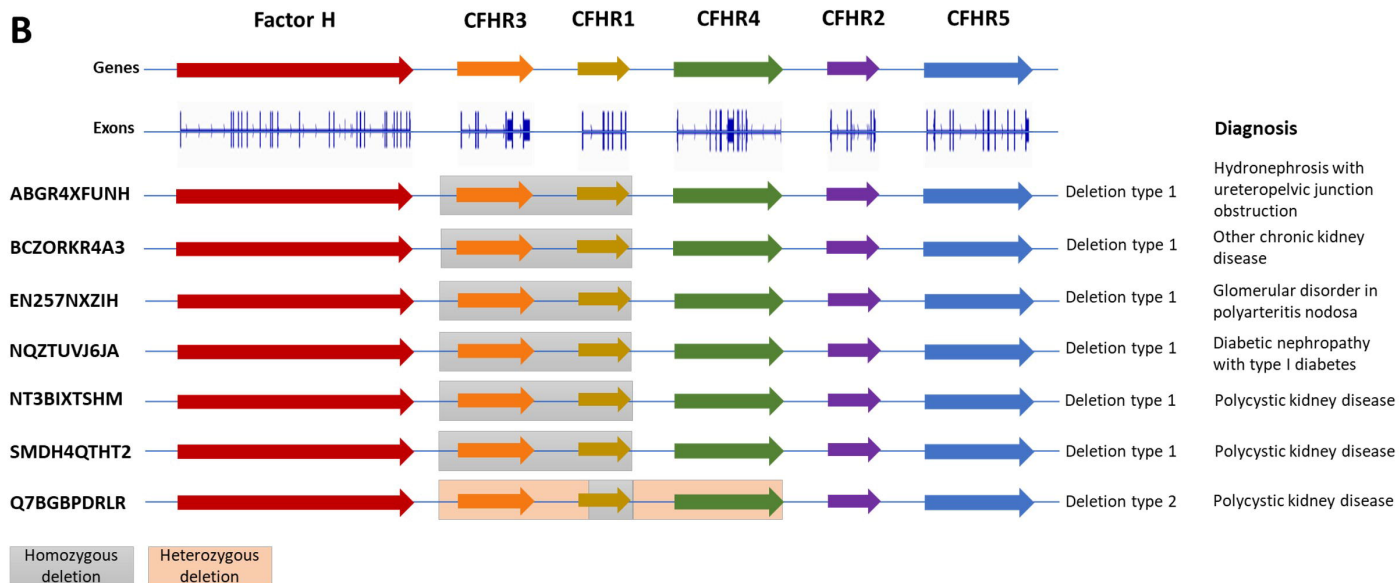
491 **Figure 1. MLPA results for rs7542235 GG genotype patients with rejection (A) and without**
492 **rejection (B).** Deletion type 1 indicates homozygous deletion at *CFHR3* exons (ex) 1-6 and
493 *CFHR1* ex 1-6. Deletion type 2 indicates homozygous deletion at *CFHR1* ex 2-6 and
494 heterozygous deletions at *CFHR3* ex 1-6 and *CFHR4* ex 1-10. Deletion type 3 indicates
495 homozygous deletion at *CFHR3* ex 6 and *CFHR1* ex 1-6 and heterozygous deletions at *CFHR3*
496 ex 1-4 and *CFHR4* ex 1-6. CFHR, complement factor H related; MLPA, multiplex ligation-
497 dependent probe amplification.

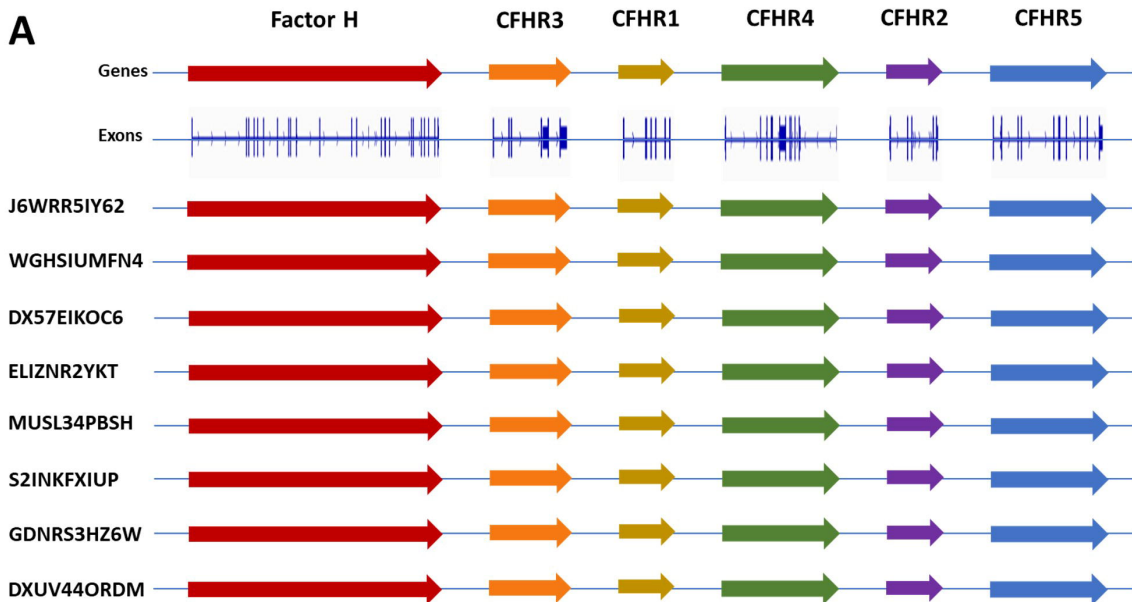
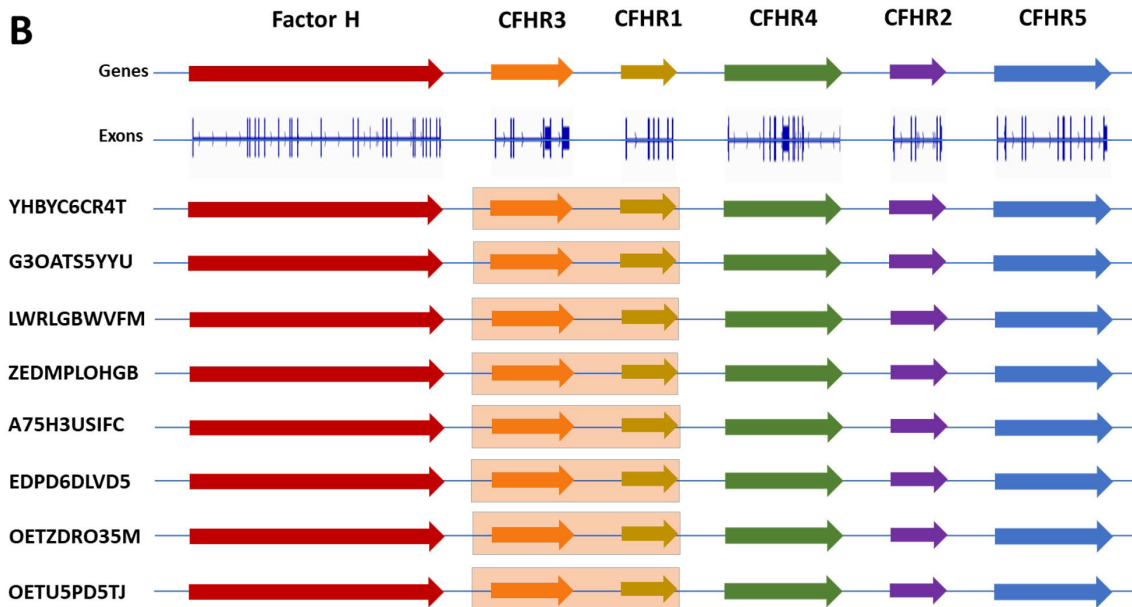
498 **Figure 2. MLPA results for rs7542235 AA genotype (A) and AG genotype (B) patients.**
499 Patients with rs7542235 AA genotype had normal genotype without deletions. Patients with
500 rs7542235 AG genotype carried a heterozygous deletion covering *CFHR3* ex 1-6 and *CFHR1*
501 ex 1-6. CFHR, complement factor H related; MLPA, multiplex ligation-dependent probe
502 amplification.

503 **Figure 3. Detailed example of MLPA and WGS results for Deletion type 3.** Patient with
504 homozygous deletion covering *CFHR3* exon 6 and *CFHR1* exons 1-6, and heterozygous
505 deletions covering *CFHR3* exons 1-4 and *CFHR4* exons 1-4. A) *CFH/CFHR* gene locus, exons
506 and deletions of patient V53C3LDXJW. B) MLPA result for the *CFH/CFHR* locus. The deletion
507 is denoted by the red spots below the deletion cut-off line (red) in the ratio chart. The red
508 line represents the 0.7 ratios, and the blue line represents the 1.3 ratios. Above the blue line
509 are the genes covered by the SALSA MLPA probemix, P236 *CFH* Region B1. C) Visualization
510 of homozygous deletion in WGS data at the beginning of *CFHR3* gene exon 6. Control
511 sample without deletion above, the patient sample below. D) Visualization of heterozygous
512 deletion in WGS data at the end of *CFHR4* gene. The coverage (gray) decreases half in size at
513 the heterozygous deletion region. CFH, complement factor H; CFHR, complement factor H
514 related; MLPA, multiplex ligation-dependent probe amplification; WGS, whole genome
515 sequencing.

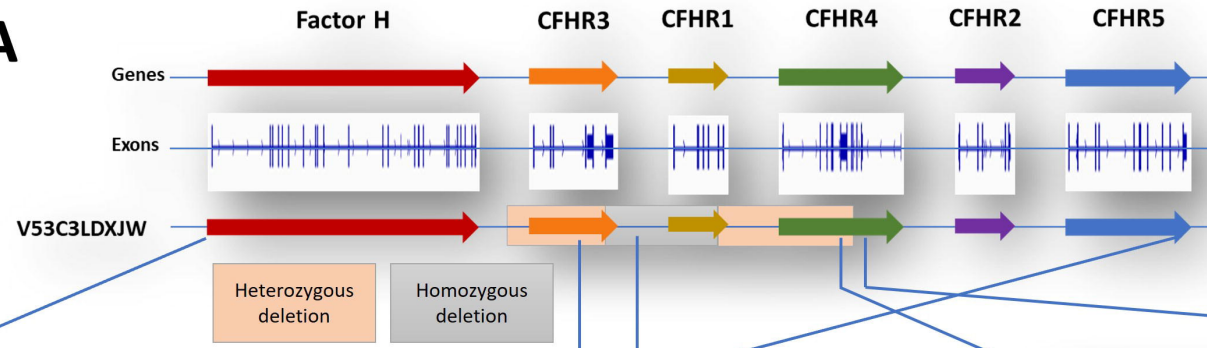
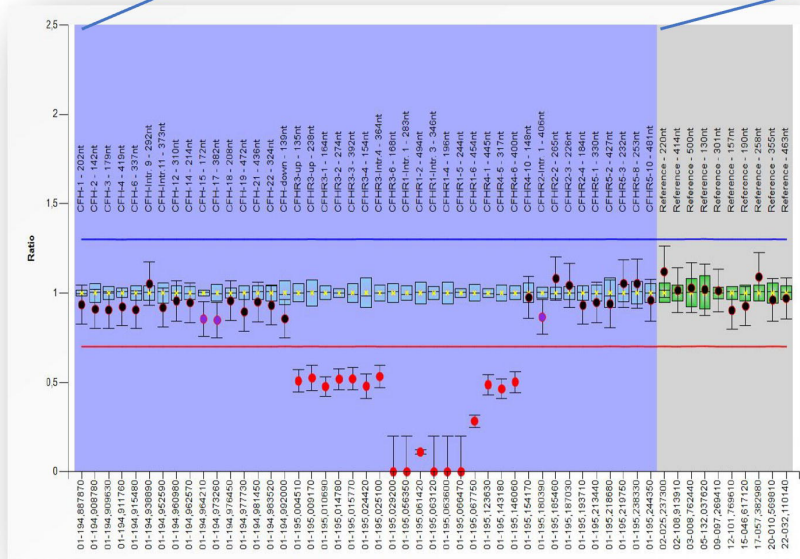
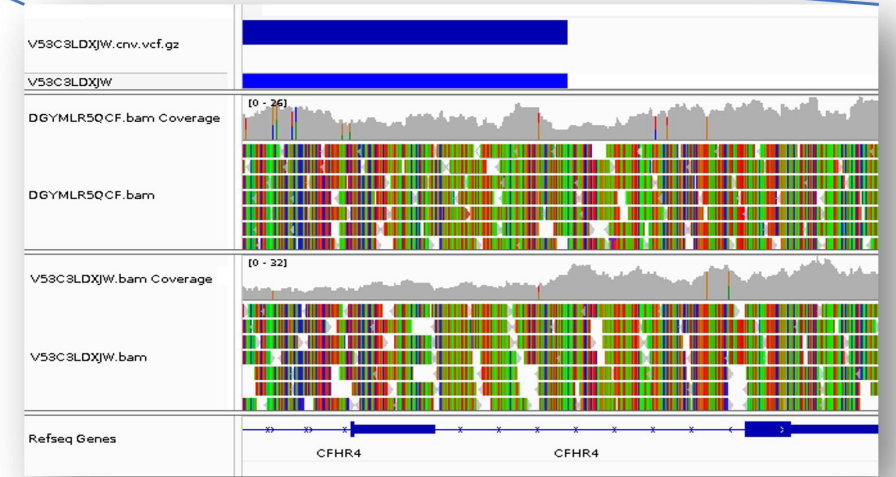
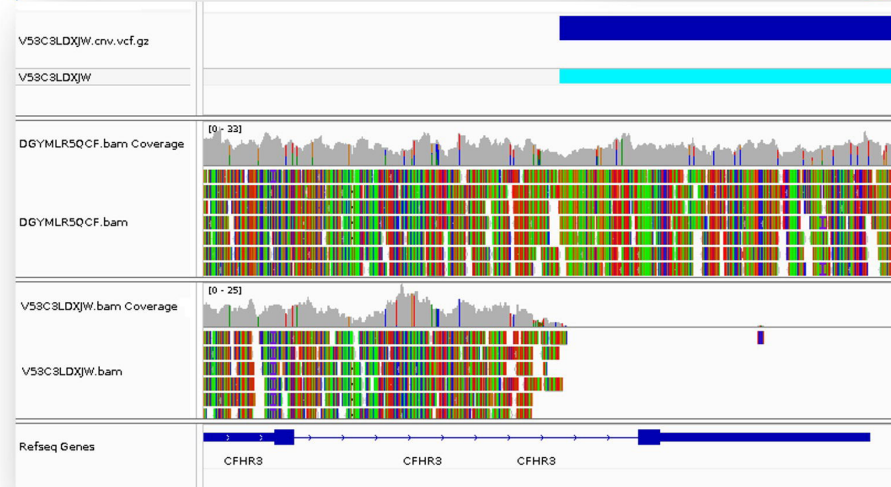
516 **Figure 4. Western blot analyses of CFH, CFHR1 and CFHR2 protein expression.** The detailed
517 information for each serum sample is described in Table 3. The sample number 4 (control)
518 and normal human serum (NHS, also control) have normal expression of CFHR1. The other

519 samples are individuals with homozygous deletion of *CFHR1* gene. CFH, complement factor
520 H; CFHR, complement factor H related.

A**B**

A**B**

Heterozygous
deletion

A**B****D****C**

FH

FHL1/
FHR1 β
FHR1 α
FHR2a
FHR2b

250
150
100
75
50
37
25
20
15

1 2 3 4 5 6 7 8 MHS

9 10 11 12 13 14 15 16 MHS

