

## **S2 Appendix**

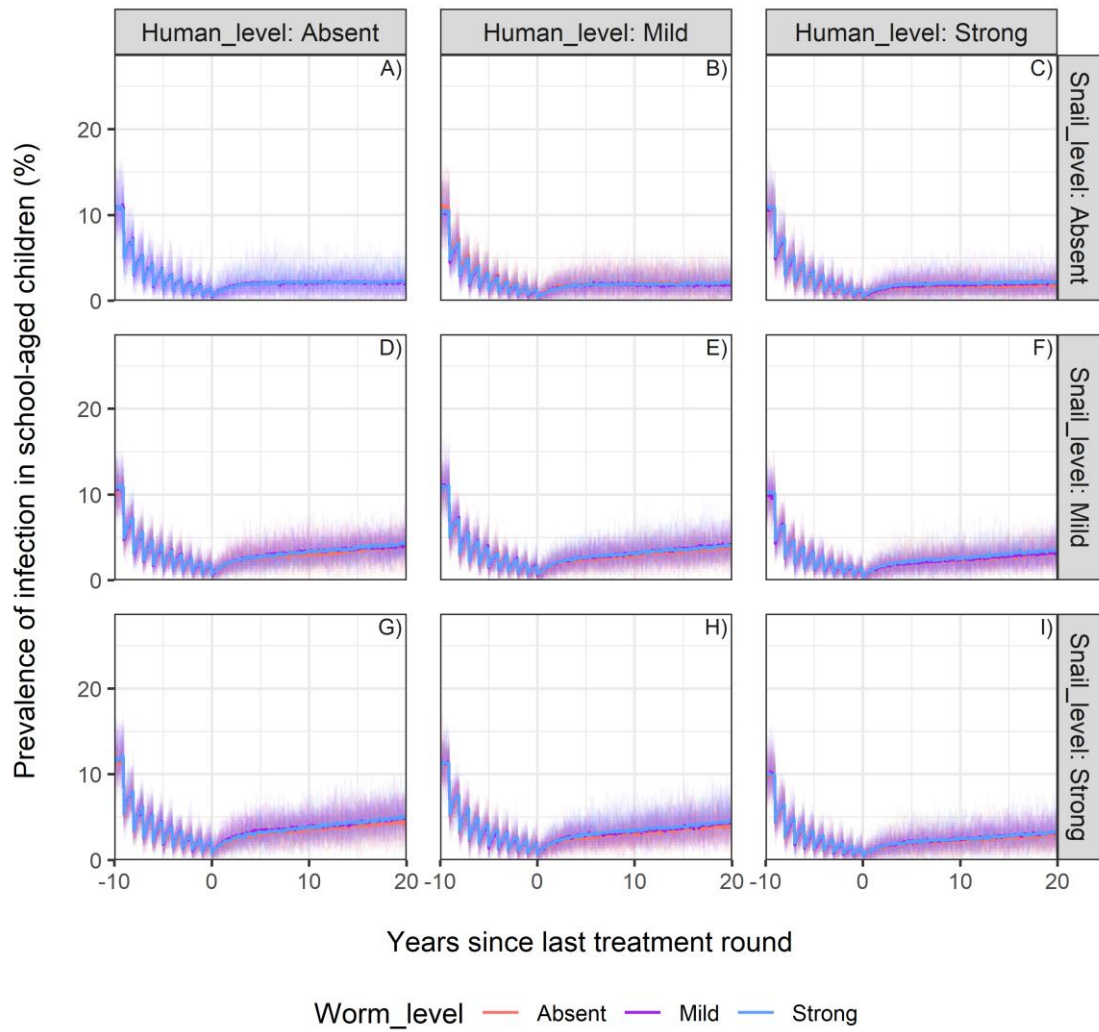
### **Effectiveness of treatment and prevalence bounce-back**

#### **Prevalence timelines in SAC during and after treatment.**

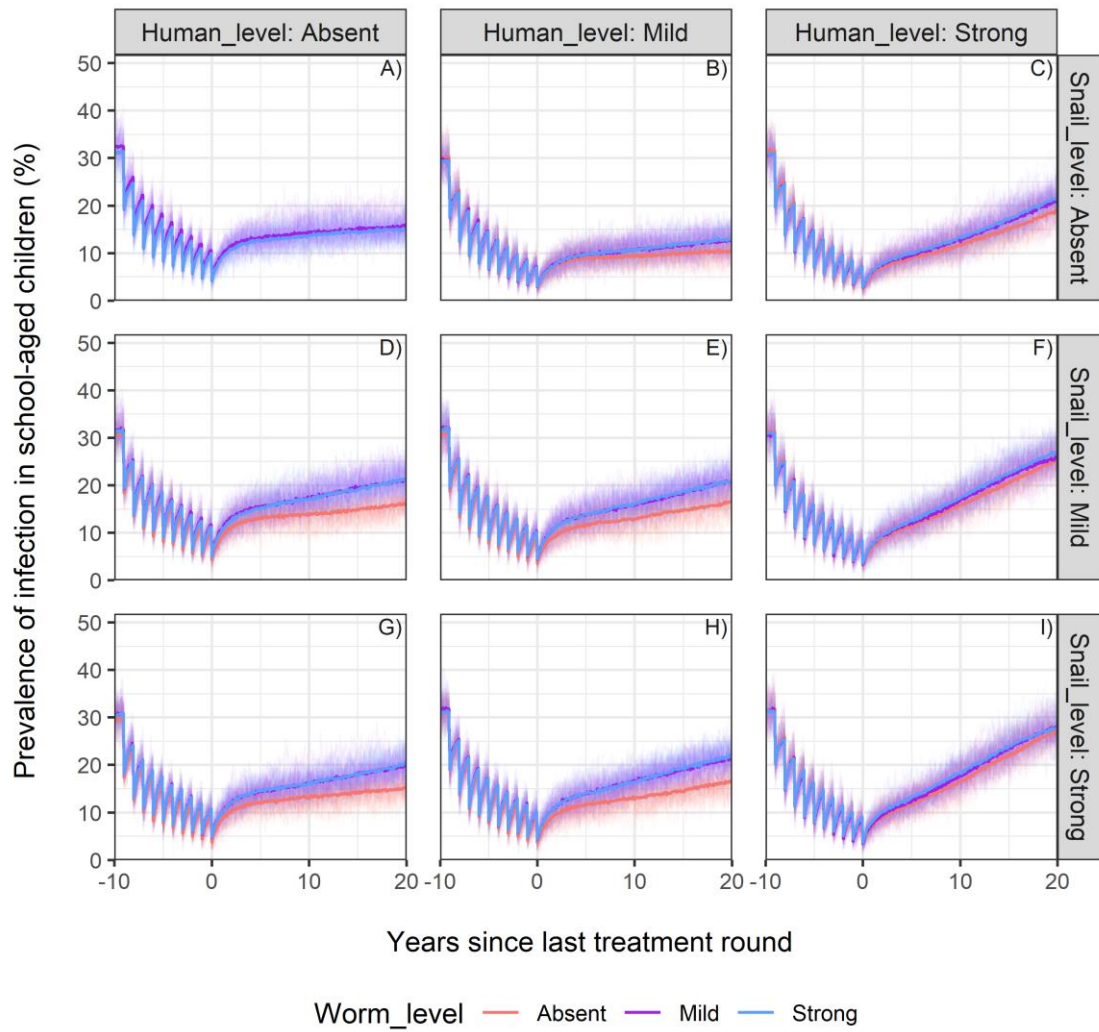
For each choice of the age-exposure function and endemicity setting (titles), single panels refer to a fixed combination of the assumptions of human-level regulation (columns) and snail-level regulation (rows). A single panel shows the infection prevalence in school-aged children on the y-axis (mean of 100 stochastic realizations of the model, single runs as shaded lines) by round of treatment on the x-axis. The prevalence timelines are displayed by varying the degree of worm-level regulation (colours). For all scenarios, treatment is annually administered to 5-15 years old individuals with 10 repeated rounds, a coverage of 75%, 5% of target population systematically untreated, and a drug efficacy of 86%.

#### **1. Assumption for the age-exposure function: “Model-based function”**

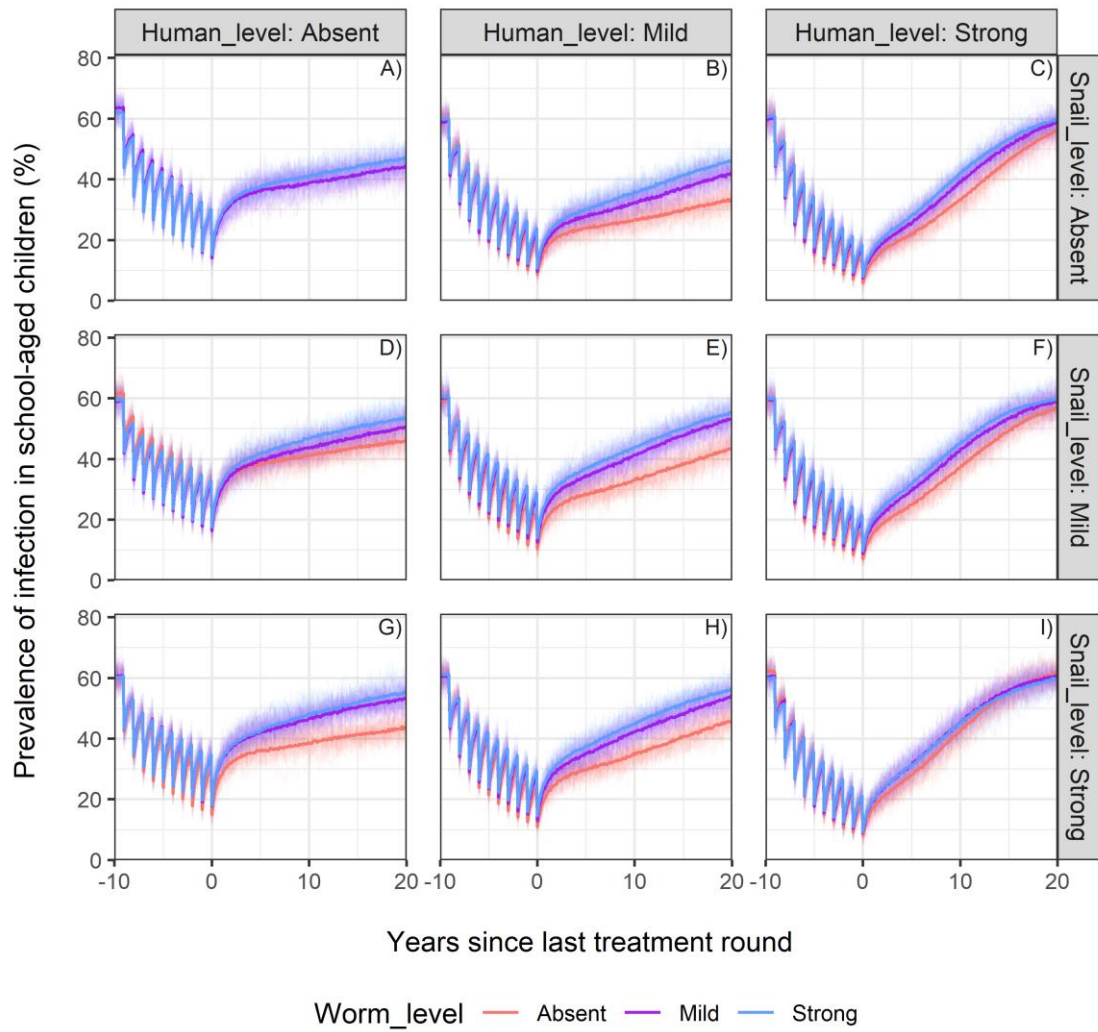
# Low endemicity setting



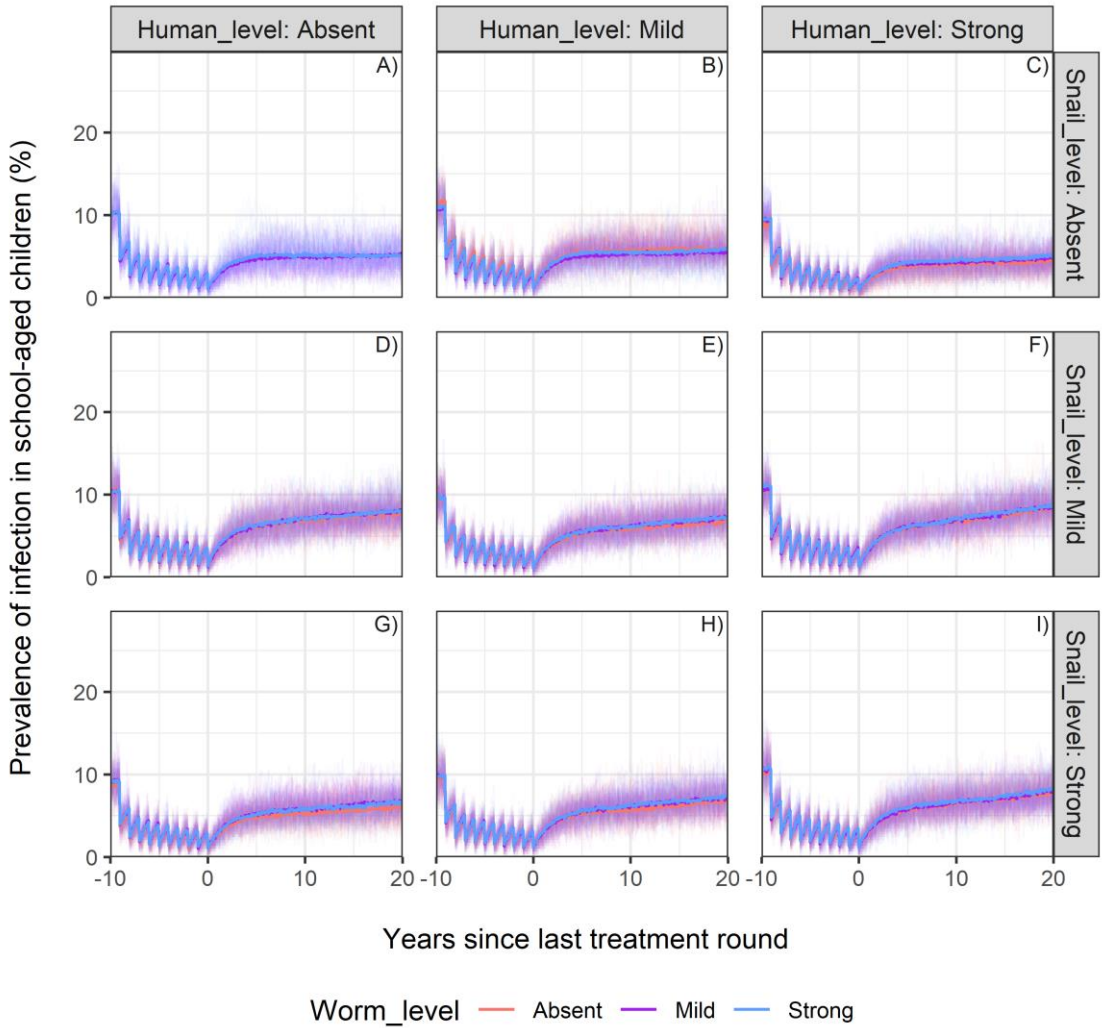
### Moderate endemicity setting



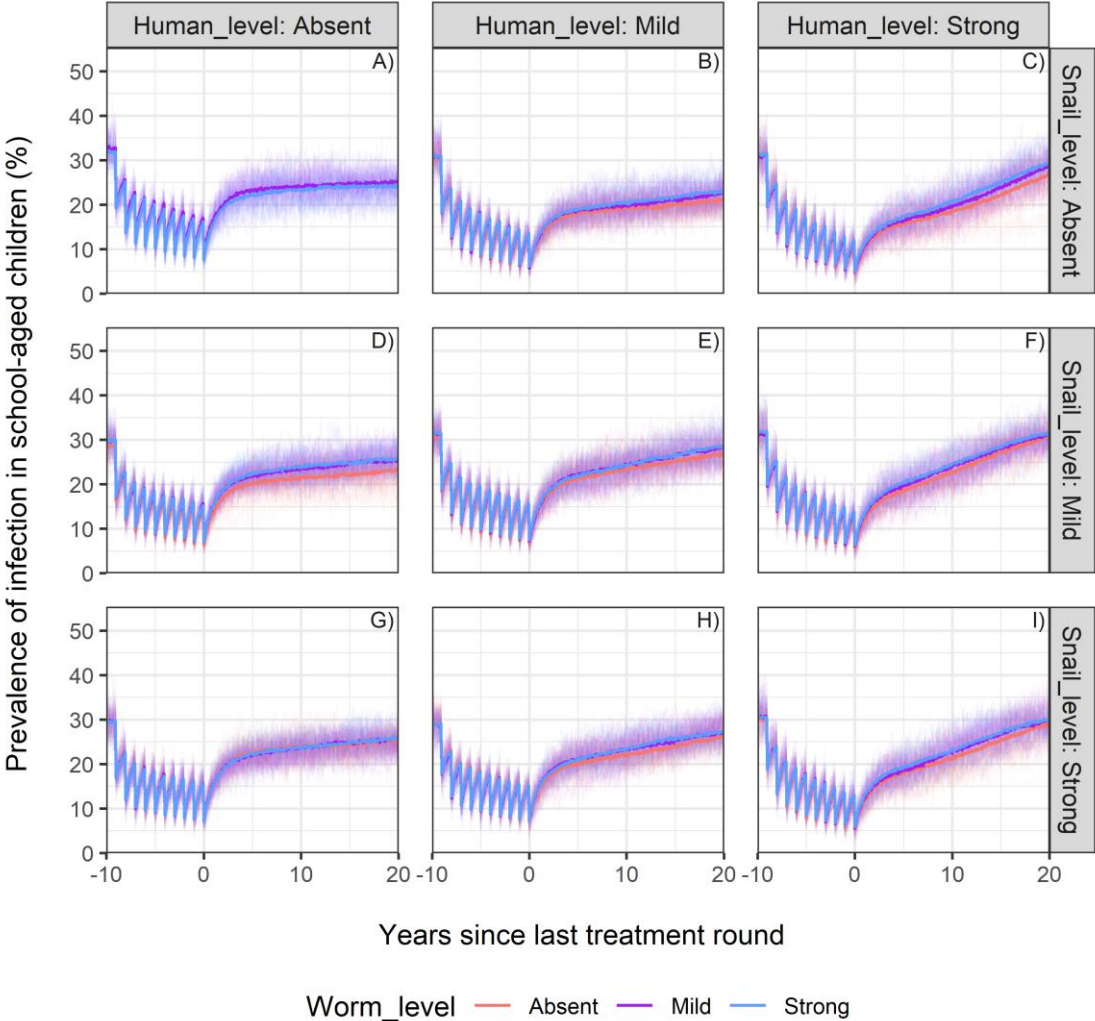
## High endemicity setting



**2. Assumption for the age-exposure function: “Based on water contacts”**  
Low endemicity setting



Moderate endemicity setting



High endemicity setting

