

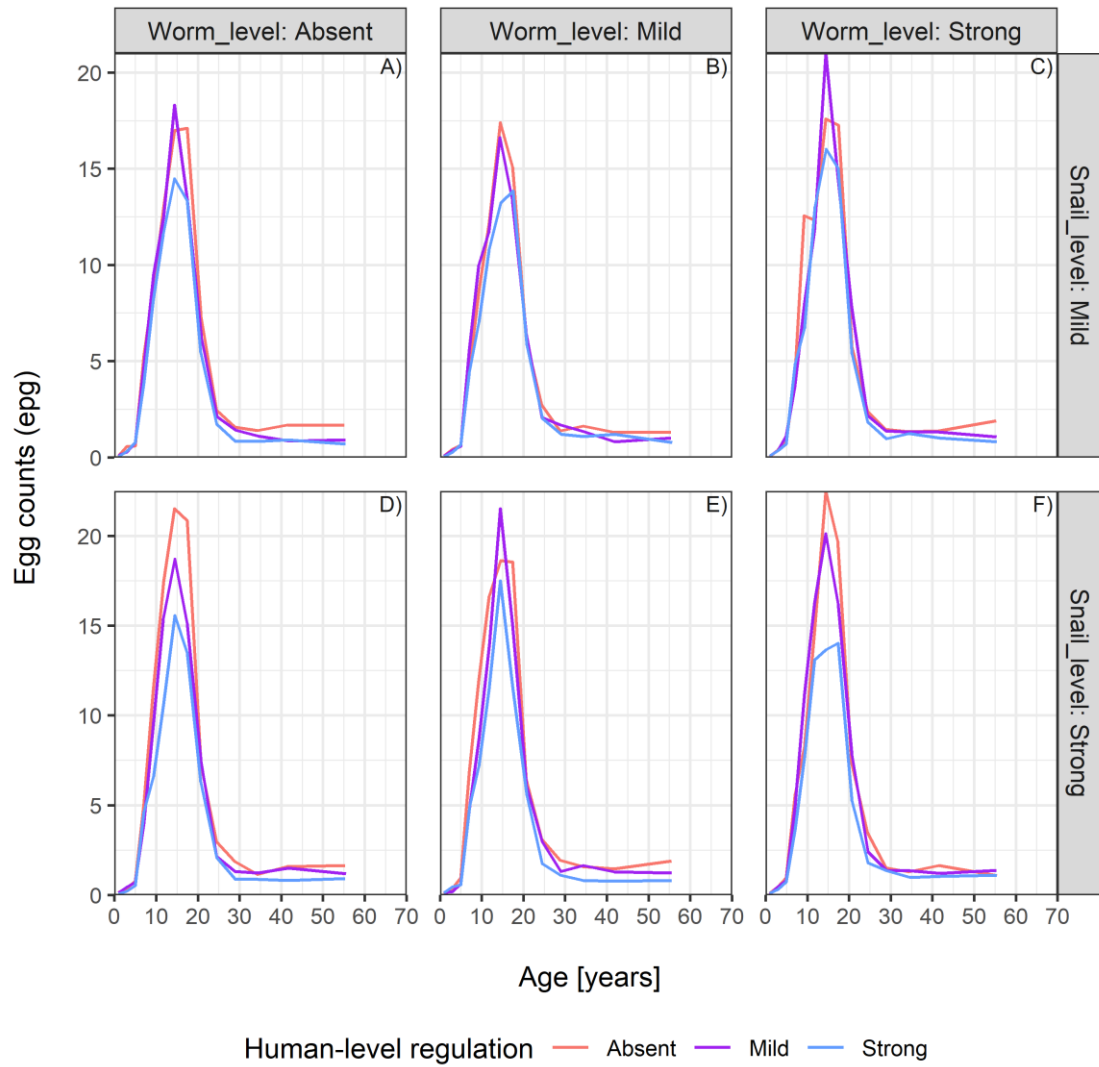
S1 Appendix

Age-intensity profiles

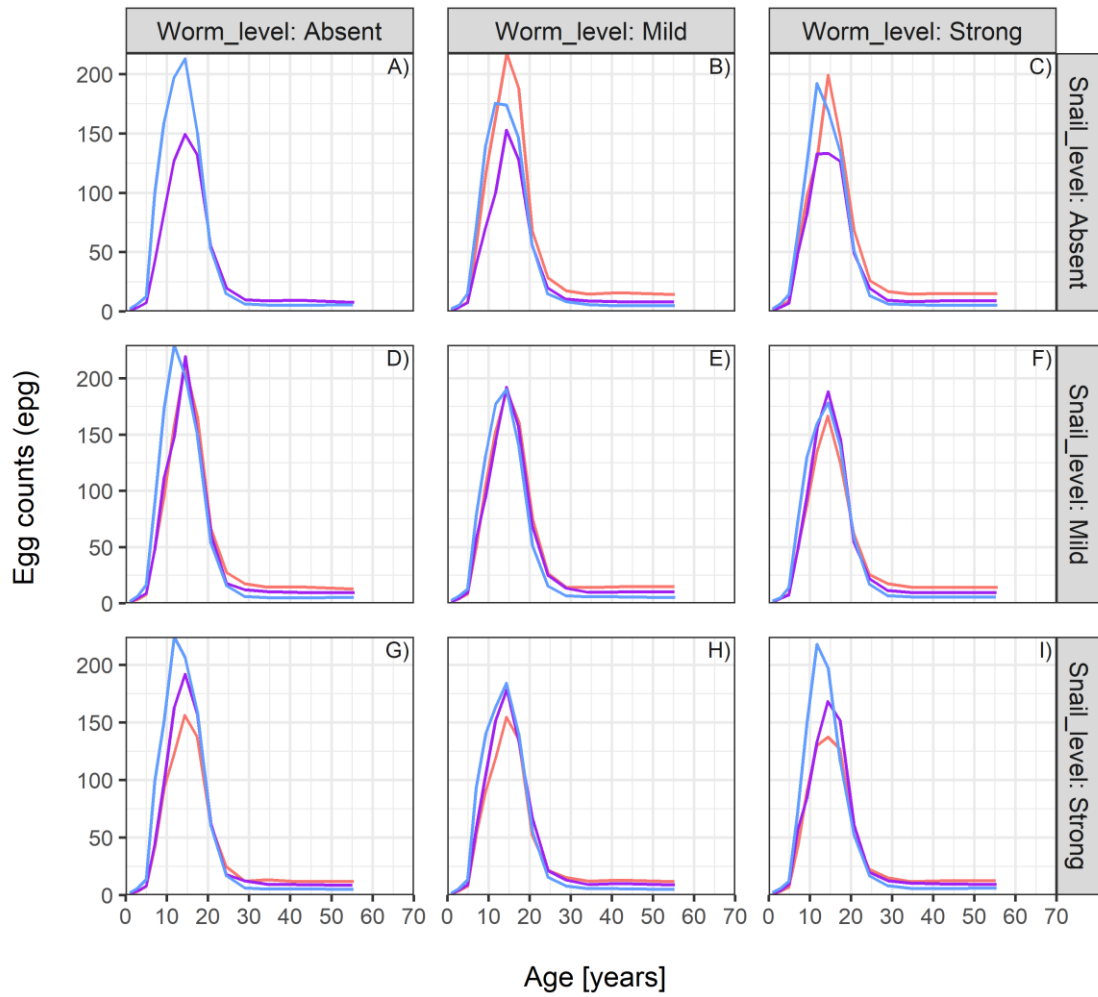
Age-intensity profiles for the complete set of modelling scenarios. For each choice of the age-exposure function and each endemicity setting (titles), single panels refer to a fixed combination of the assumptions of worm-level regulation (columns) and snail-level regulation (rows). A single panel shows the simulated egg counts on the y-axis (mean epg is displayed, over age group and 100 stochastic realizations of the model) by age on the x-axis. The age-intensity profiles are displayed at pre-control, by varying the degree of regulating mechanism in humans (colours). Age bins are defined as to all be equally sized.

1. Assumption for the age-exposure function: “Model-based

Low endemicity setting

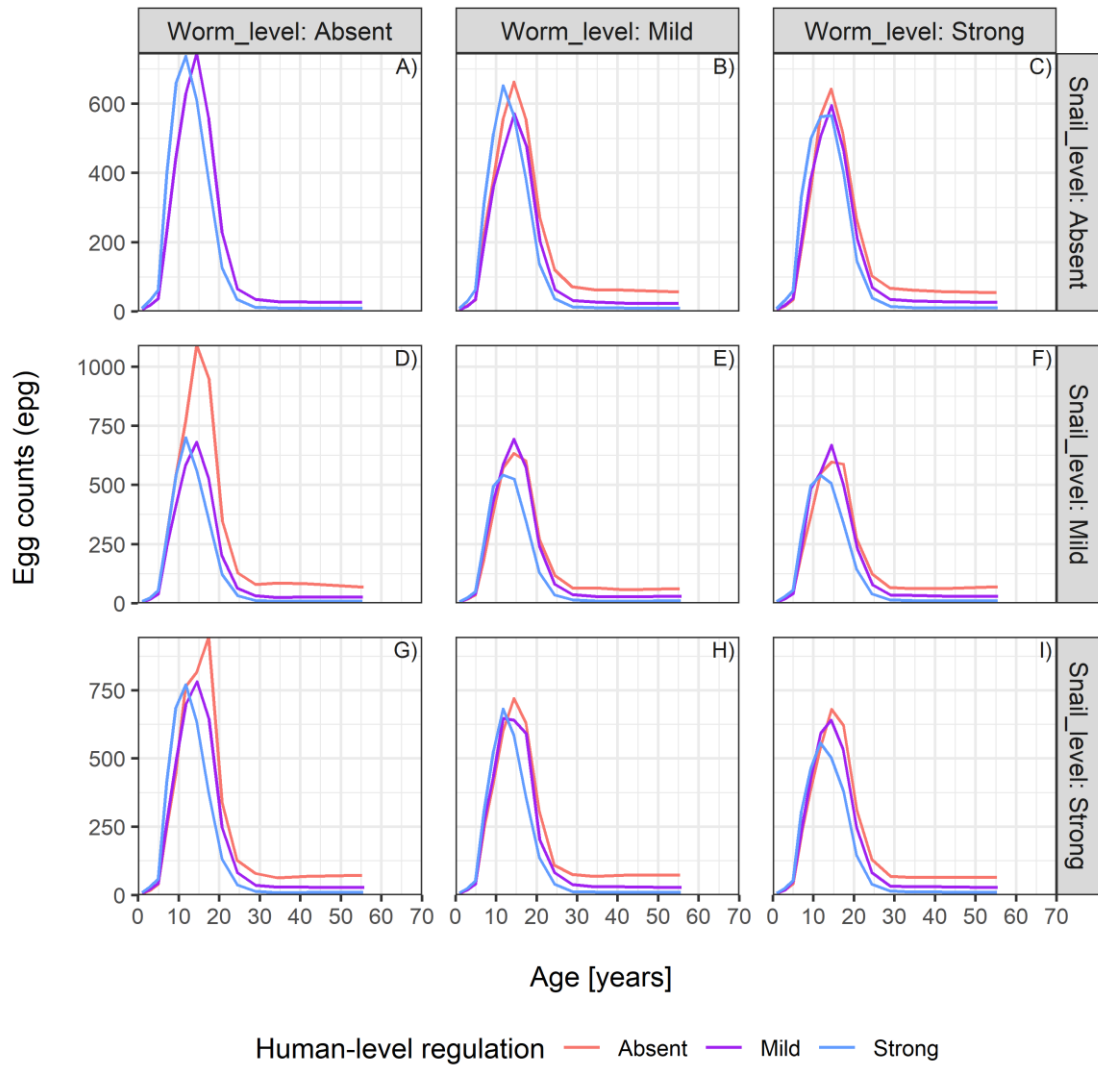


Moderate endemicity setting

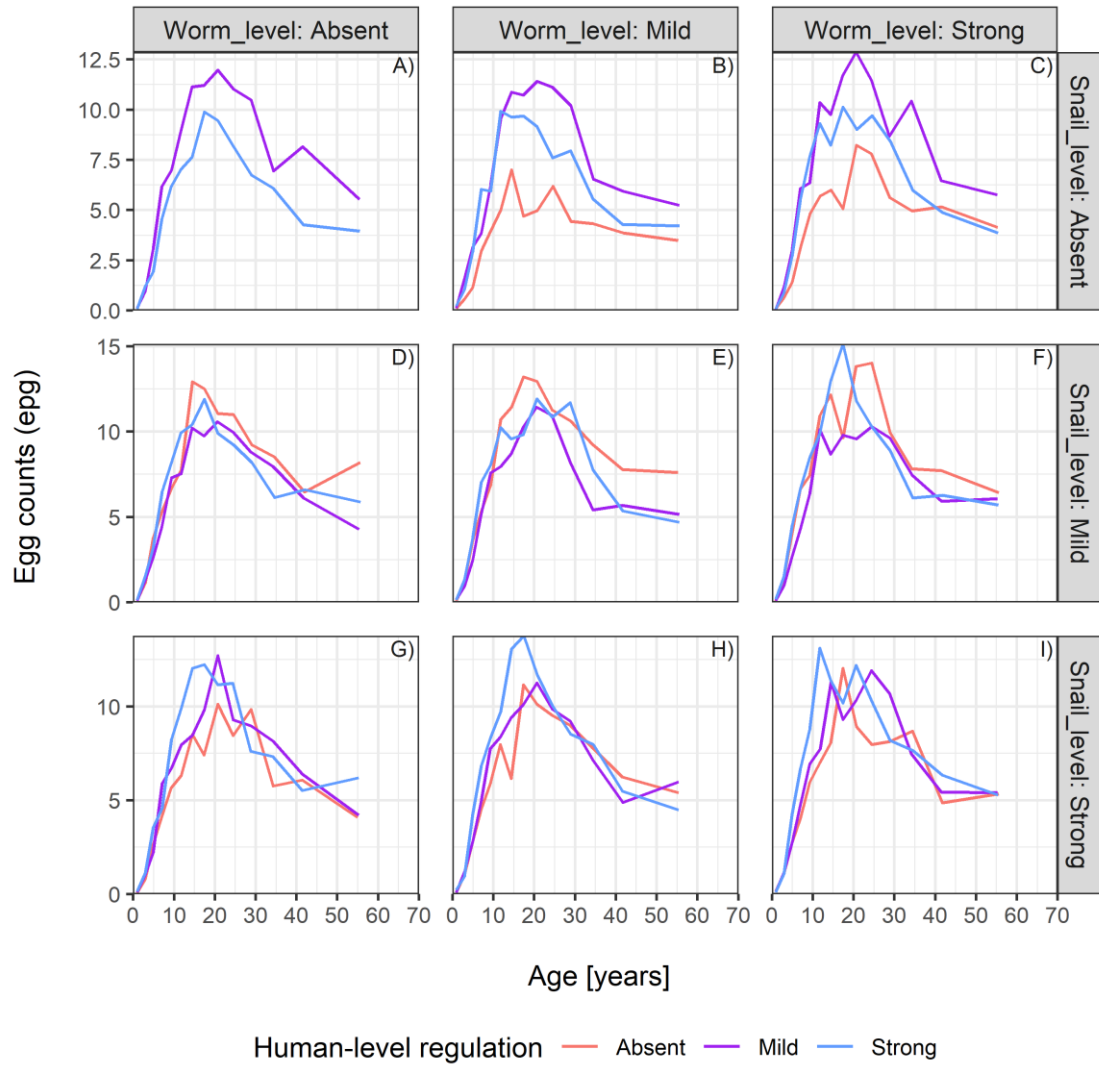


Human-level regulation — Absent — Mild — Strong

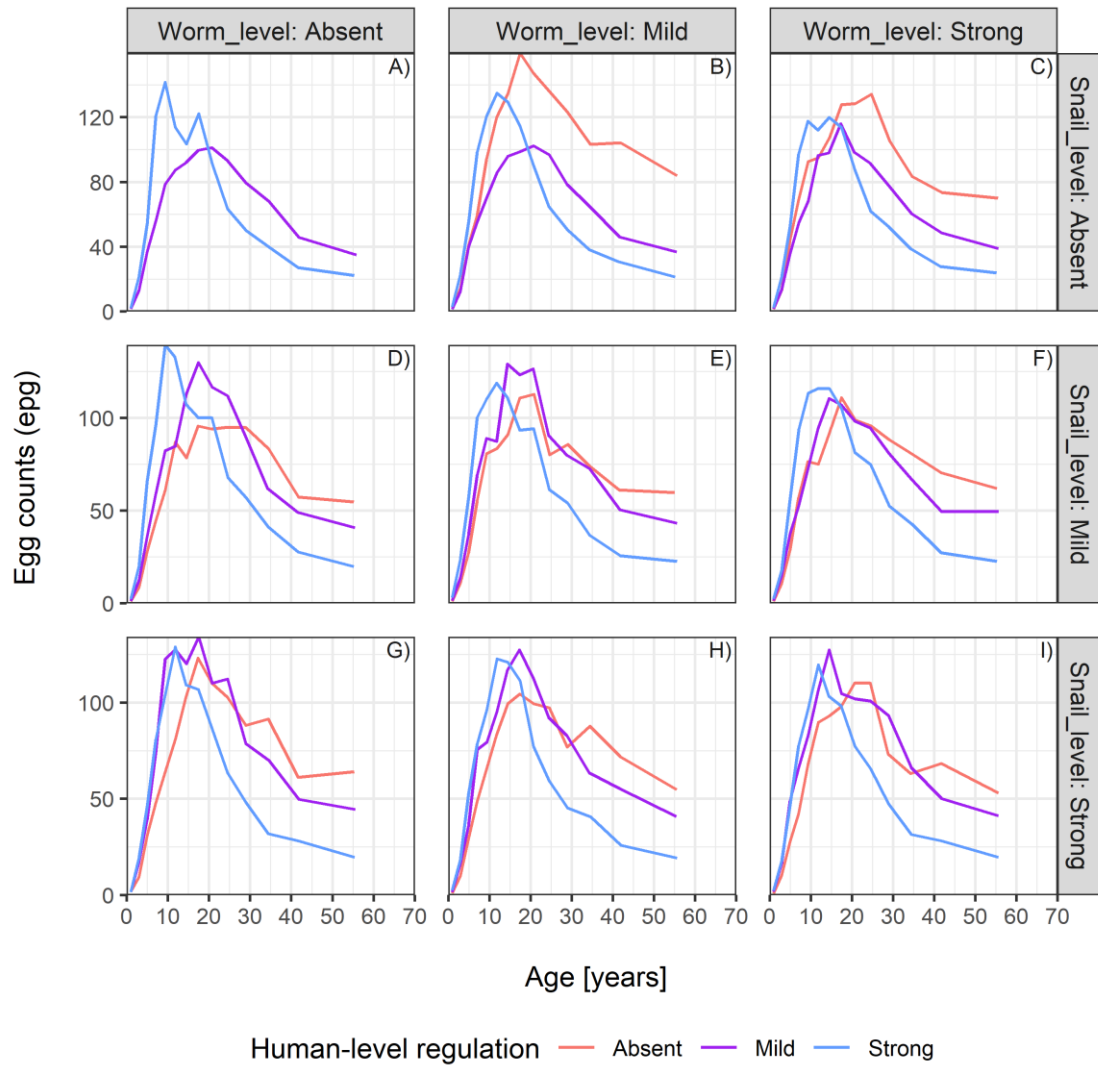
High endemicity setting



2. Assumption for the age-exposure function: “Based on water contacts” Low endemicity setting



Moderate endemicity setting



High endemicity setting

