

1 **External validation of Finnish Diabetes Risk Score (FINDRISC) and Latin**  
2 **American FINDRISC for screening of undiagnosed dysglycemia: analysis in a**  
3 **Peruvian hospital health care workers sample.**

4

5 Marlon Yovera-Aldana<sup>1\*</sup>; Edward Mezones-Holguín <sup>2,3</sup> Rosa Agüero-Zamora <sup>4</sup> ; Lucy  
6 Damas-Casani <sup>5</sup>; Becky Uriol-Llanos <sup>6</sup>; Frank Espinoza-Morales <sup>7</sup>; Percy Soto-Becerra  
7 <sup>8,9</sup>; Ray Ticse-Aguirre <sup>9,10</sup>

8

9 <sup>1</sup> Grupo de Investigación en Neurociencias, Efectividad Clínica y Salud Pública,  
10 Universidad Científica del Sur.. Lima, Perú.

11 <sup>2</sup> Centro de Excelencia en Investigaciones Económicas y Sociales en Salud,  
12 Universidad San Ignacio de Loyola, , Lima, Perú

13 <sup>3</sup> Epi-gnosis Solutions, Piura, Peru.

14 <sup>4</sup> Facultad de Medicina, Universidad Nacional Federico Villarreal, Lima, Perú

15 <sup>5</sup> Servicio de Endocrinología, Hospital María Auxiliadora, Lima, Perú.

16 <sup>6</sup> Red de Eficacia Clínica y Sanitaria, Lima, Perú.

17 <sup>7</sup> Centro de Tecnologías Aplicadas a la diabetes, CAVIMEDIC, Lima, Perú.

18 <sup>8</sup> Instituto de Evaluación en Tecnologías en Salud e Investigación (IETSI) , Lima, Perú.

19 <sup>9</sup> Universidad Continental, Huancayo, Peru.

20 <sup>10</sup> Escuela de Posgrado, Universidad Peruana Cayetano Heredia, Lima, Perú

21

22 \*Corresponding author:

23 Marlon Yovera-Aldana. E-mail: [myovera@cientifica.edu.pe](mailto:myovera@cientifica.edu.pe) (MYA)

## 25 ABSTRACT

26 **Aims:** To evaluate the external validity of Finnish diabetes risk score (FINDRISC) and Latin  
27 American FINDRISC (LAFINDRISC) for undiagnosed dysglycemia in hospital health care  
28 workers.

29 **Methods:** We carried out a cross-sectional study on health workers without a prior history of  
30 diabetes mellitus (DM). Undiagnosed dysglycemia (prediabetes or diabetes mellitus) was defined  
31 using fasting glucose and two-hour oral glucose tolerance test. LAFINDRISC is an adapted  
32 version of FINDRISC with different waist circumference cut-off points. We calculated the area  
33 under the receptor operational characteristic curve (AUROC) and explored the best cut-off point.

34 **Results:** We included 549 participants in the analysis. The frequency of undiagnosed  
35 dysglycemia was 17.8%. The AUROC of LAFINDRISC and FINDRISC were 71.5% and 69.2%;  
36  $p=0.007$ , respectively. The optimal cut-off for undiagnosed dysglycemia according to Index  
37 Youden was  $\geq 11$  in LAFINDRISC (Sensitivity: 78.6%; Specificity: 51.7%) and  $\geq 12$  in  
38 FINDRISC (Sensitivity: 70.4%; Specificity: 53.9%)

39 **Conclusion:** The discriminative capacity of both questionnaires is good for the diagnosis of  
40 dysglycemia in the healthcare personnel of the María Auxiliadora hospital. The LAFINDRISC  
41 presented a small statistical difference, nonetheless clinically similar, since there was no difference  
42 by age or sex. Further studies in the general population are required to validate these results.

43 **Keywords:** Diabetes mellitus; prediabetic state; clinical decision rules; glucose tolerance test;  
44 ROC curve; sensitivity and specificity.

## 46 INTRODUCTION

47 Only half of the people with diabetes mellitus (DM) in the world know they have this disease.  
48 The delay in the diagnosis of diabetes mellitus affects the costs for treatment, management of  
49 macro and microvascular complications, and quality of life.[1] South America and the Caribbean  
50 have the lowest global prevalence after Africa, but it will increase by 55% in 2045.[2] In Peru,  
51 19.5 new cases are detected every 1000 person-years; this rate is one of the highest reported  
52 globally [3]. The systematic screening of diabetes and the application of lifestyles will prevent  
53 complications and their prices and reduce the incidence in the medium term [4].

54 The diagnosis of dysglycemia, DM or prediabetes requires a laboratory test. In order to further  
55 improve the performance of the screening approach, we must apply them to the population at risk.  
56 [5] In addition, the clinical practice guidelines from the US, Europe, and certain countries from  
57 Latin America (LATAM) promote DM screening in the general population as a health policy  
58 through clinical practice rules (CPR)[6–8]. There are several CPR for DM, but the FINDRISC is  
59 the most common tool used in LATAM [9], where certain countries use it through an adapted or  
60 simplified version. [10].

61 Adaptation of CPR is necessary and highly relevant, especially when the characteristics of the  
62 population to be diagnosed are different from the participants of the original validation study [11].  
63 Abdominal obesity in LATAM presents a different pattern than in Europe; based on this  
64 consideration, the Latinamerican Group for the Study of Metabolic Syndrome and obesity  
65 proposed a new cut-off point for waist circumference in women (90 cm) and men (94cm), which  
66 is correlated with a visceral fat area value >100 cm<sup>2</sup> obtained by dual X-ray absorptiometry [12].  
67 These cut-off points correlate better to insulin resistance than Adult Treatment **Panel III** cut-off  
68 points based on the body mass index. Based on these findings and the original FINDRISC, they  
69 developed the Latin American FINDRISC (LAFINDRISC), which was validated in Colombia  
70 and Venezuela in the general population using this updated criteria [13,14].

71 On the other hand, health care workers show a higher risk of DM than the general population. A  
72 condition influenced by shift work, loss of the circadian rhythm of eating, mental health

73 impairment, and sleep disturbances [15]. Prediabetes has pathophysiological alterations as  
74 diabetes, and there are microvascular complications in the early stages. [16] Therefore, our study  
75 aimed to evaluate the external validity of FINDRISC and LAFINDRISC for undiagnosed  
76 dysglycemia in health care workers at a high complexity general hospital from Peru. Our results  
77 constitute a piece of substantial primary evidence to address the DM research in a high-risk  
78 occupational health group.

79

## 80 **Material and methods**

### 81 **Design and setting.**

82 We carried out a cross-sectional study from 20/06/2017 to 30/09/2017 in the María Auxiliadora  
83 General Hospital (MAGH), a national health facility of the Ministry of Health, located in southern  
84 Lima's suburban area capital city of Peru. The MAGH has 1,839 workers, of which 70% are health  
85 care personnel. It has a health network that involves around one million users affiliated to  
86 Comprehensive Health Insurance (SIS from Spanish Acronym) with subsidised public health  
87 insurance.

### 88 **Population, sample, and sampling**

89 We included adults, residence in Lima for more than six months, and a minimum working time  
90 of three months in the MAGH. We excluded subjects with DM, pregnancy, under corticosteroid  
91 therapy (at least one month in the last year), a history of antiretroviral or oncological treatment,  
92 people disabilities to walk, personnel with medical leave due to illness, vacations, or suspension  
93 from work during the selection process.

94 We estimated a minimum sample size in 549 participants using Epidat 4.2 (Xunta de Galicia,  
95 Santiago de Compostela, Spain) based on a prevalence of dysglycemia (diabetes mellitus and  
96 impaired fasting glucose) in Peru of 29.4% [17], expected sensitivity values of 66% and 80% for  
97 FINDRISC and LAFINDRISC, respectively, with 95% confidence level and 5% precision. In

98 addition, we added 10% in case of refusal to participate or absence from work. The selection  
99 process was through random sampling from a list of 1839 employees.

## 100 Dysglycemia

101 The diagnosis of dysglycemia included prediabetes or diabetes. Prediabetes had fasting glycemia  
102 between 100 and 125 mg/dl (impaired fasting glucose) or two hour blood glucose after a 75 g  
103 load between 140-199 mg/dl (glucose intolerance). Diabetes mellitus was diagnosed by fasting  
104 blood glucose  $\geq 126$  mg/dl or blood glucose two hours after 75 g loading  $\geq 200$  mg/dl. [6]

## 105 Findrisc and Lafindrisc

106 Both questionnaires present eight items: age, body mass index, abdominal circumference,  
107 personal history of physical activity, frequency of consumption of fruits and vegetables, history  
108 of antihypertensive medication, history of high blood glucose, and family history of diabetes. The  
109 difference between the two scores lies in the cut-off point for waist circumference to define  
110 abdominal obesity; in the LAFINDRISC, these values changed from 88 to 90 cm in women and  
111 102 to 94 cm in men. Likewise, the modified questionnaire has only two categories, while the  
112 FINDRISC has three.[10](Tab S1)

## 113 Procedures

114 During the break in the working day, we assessed the eligibility criteria and requested the signing  
115 of the informed consent. Then, we scheduled a maximum of eight people per time. Trained  
116 nursing staff administered the questionnaires, the oral glucose tolerance test and collected the  
117 blood samples. In the case of night work, OGTT was performed after 48 hours.

118 We used a digital weight scale SECA ® (USA), calibrated daily, with an accuracy of 0.5kg and a  
119 height rod attached to the wall using the standard measurement technique. According to WHO,  
120 we place an inelastic tape measure in the middle of the distance of the costal ridge and the  
121 anterior superior iliac spine for the abdominal circumference.[18]. We prepared the glucose load  
122 in 300 ml of water containing 75 g of glucose and 1.6 g of citric acid (1 squeezed lemon). We  
123 requested a minimum fasting time of 8 hours on the appointment day. We collected the basal

124 venous samples 2 hours after glucose loading in dry tubes and centrifuged them in the next 30  
125 minutes.[19] We used a COBAS 6000 (c501 module) automated analyser (ROCHE, USA),  
126 according to the Center for Disease Control and Prevention. [20]

## 127 Statistical analysis

128 We described categorical data by frequencies and proportions. Using generalized linear models,  
129 Poisson family, logarithmic link function, and robust variance, we calculated prevalence ratios  
130 (PR) with its 95% confidence interval for each component of the FINDRISC or LAFINDRISC.  
131 In addition, we estimated the sensitivity, specificity, positive predictive value, negative predictive  
132 value, positive likelihood ratio, negative likelihood ratio, and diagnostic odds ratio for both  
133 indices. Also, we effectuated the comparison between both areas under the Receiver Operating  
134 Characteristics (ROC) curve. We used the Youden Index to identify the score with the best  
135 discriminative capacity based on estimates of specificity and sensitivity [21]. Finally, we  
136 performed a simulation with 1000 patients to calculate those correctly diagnosed considering a  
137 dysglycemia prevalence of 29.4% based on the reports from a sizeable Peruvian cohort study  
138 (PERUDIAB). We used STATA version 17.0 (Stata Corp, College Station, Texas, USA).

## 139 Ethics

140 All participants signed an written informed consent based on the principles of the Declaration of  
141 Helsinki. Subjects were free to refuse to participate at any time. The Institutional Ethics  
142 Committee for Research of the Universidad Peruana Cayetano Heredia approved the study  
143 protocol, under the code CONSTANCIA 382-13-17. We kept the data confidential through codes  
144 only the principal investigator had access to the data. We communicate the results to all patients  
145 in writing. People with dysglycemia or high LAFINDRISC scores were referred to an  
146 endocrinology outpatient clinic.

## 147 **RESULTS**

148 From 1,835 health care workers, we randomly selected 589 subjects and 561 workers for the oral  
149 glucose tolerance test. Finally, we included 549 participants in the analysis. **(Fig 1).**

### 150 **Fig 1. Selection of study participants**

151

152 Seventy-seven per cent of the study subjects were female; the age range ranged from 20 to 70  
153 years, with a median of 51 years. Seventy-five per cent presented a body mass index greater than  
154 25 kg/m<sup>2</sup>, and 65.4% showed abdominal obesity according to Latin American criteria (90 cm for  
155 women and 94 cm for men) **(Table 1).**

156

### 157 **Table 1. Clinical and epidemiological characteristics of healthcare workers included in the** 158 **analysis**

159

	<b>n</b>	<b>Percentage (CI 95%)</b>
<b>Total</b>	549	100
<b>Sex</b>		
Female	425	77.4 (73.7 – 80.8)
Male	124	22.6 (19.1 – 26.3)
<b>Type of job</b>		
Patient care	380	67.2 (65.2 – 73.1)
Administrative	102	18.9 (15.4 – 22.1)
General services	67	12.2 (9.6 – 15.2)
<b>Labour group</b>		
Professional (university training)	218	40.2 (35.6 – 43.9)
Technical – auxiliary (non-university training)	332	59.7 (54.4 – 62.8)
<b>Age (years)</b>		
Mean ± SD	49.6 ± 11.2	
<45	164	29.9 (26.0 – 33.9)
45 – 54	180	32.8 (28.8 – 36.9)

55 – 64	171	31.2 (27.3 – 35.2)
≥ 65	34	6.2 (4.3 – 8.5)
<b>Body mass index (kg/m<sup>2</sup>)</b>		
Mean ± SD	28.2 ± 4.6	
< 25	141	25.6 (22.1 – 29.6)
25 – 29.9	255	46.4 (42.2 – 50.7)
≥ 30	153	27.8 (24.2 – 31.8)
<b>Abdominal obesity</b>		
Female: Mean ± SD	93.6 ± 10.1	
Male: Mean ± SD	99.5 ± 9.5	
Female ≥ 80 cm Male ≥ 94 cm (European)	491	89.4 (86.6 – 91.8)
Female ≥ 90 cm Male ≥ 94 cm (LATAM)	359	65.4 (61.2 – 69.3)
Female ≥ 88 cm Male ≥ 102 cm (ATPIII)	359	65.4 (61.2 – 69.3)
<b>Glycemia</b>		
Fasting glucose (mg/dL)		
Mean ± SD	91.5 ± 16.5	
<100	460	83.8 (80.4 – 86.8)
100-125	76	13.8 (11.0 – 17.0)
≥ 126	13	2.3 (1.3 – 4.0)
2 hours post 75 g (mg/dL)		
Mean ± SD	98.4 ± 34.5	
<140	517	94.2 (91.9 – 96.0)
140 – 199	25	4.5 (3.0 – 6.6)
≥ 200	7	1.3 (0.5 – 2.6)
<b>Glycemic disturbance</b>		
Euglycemia	451	82.2 (78.7 – 85.2)
Undiagnosed dysglycemia	98	17.8 (14.7 – 21.3)
Prediabetes	84	15.2 (12.4 – 18.6)
IFG	63	11.4 (8.9 – 14.4)
IGT	21	3.8 (2.4 – 5.8)
Only IGT	9	
IFG and IGT	12	
Diabetes mellitus	14	2.6 (1.4 – 4.2)



Only fasting glucose $\geq$ 126 mg/dl	7	
Fasting glucose $\geq$ 126 mg/dl + glucose 2 h post 75g $\geq$ 200 mg/dl	6	
Only glucose 2 h post 75g $\geq$ 200 mg/dl	1	

160 ATP: Adult Treatment Panel III. LATAM: Latin -american

161 IFG: Impaired fasting glycemia, ITG Impaired glucose tolerance, DM: Diabetes  
162 mellitus

163

164

### 165 Prevalence of Undiagnosed dysglycemia

166 We found that 17.9% (95% 14.7 – 21.3) had undiagnosed dysglycemia, 2.6 % (CI 95% 1.4 – 4.2)  
167 DM and 15.2% (CI 95% 12.4 – 18.6) prediabetes (**Table 1**). Likewise, its prevalence was  
168 significant higher in people aged 65 years or more (44.1%), B.M.I. $\geq$  30 (30.5%), higher value  
169 of circumference (22.8%), with hypertension (28.2%) and history of hyperglycemia (42.9%)  
170 (**Table 2**).

171

172 **Table 2.** Prevalence of FINDRISC items for undiagnosed dysglycemia in health workers included in the analysis

173

	Prevalence of undiagnosed dysglycemia		Crude Model (n = 549)			Adjusted Model A (n = 549)			Adjusted Model B (n = 549)		
	Subtotal / Total	% (CI95%)	PR	(95% CI)	p	Pra	(95% CI)	p	Pra	(95% CI)	p
<b>Age group (years)</b>											
<45	17 / 164	10.4 (6.1 – 16.1)	1	(Reference)		1	(Reference)		1	(Reference)	
45-54	35 / 180	19.4 (13.9 – 26.0)	1.88	(1.09–3.22)	0.022	1.51	(0.90–2.52)	0.118	1.52	(0.91–2.55)	0.113
55-64	31 / 171	18.1 (12.7 – 24.7)	1.75	(1.01–3.04)	0.047	1.44	(0.82–2.51)	0.201	1.40	(0.79-2.46)	0.25
≥ 65	15 / 34	44.1 (27.2 – 62.1)	4.26	(2.36–7.67)	<b>&lt;0.001</b>	2.77	(1.50–5.12)	<b>0.001</b>	2.72	(1.49-4.95)	<b>0.001</b>
<b>Body mass index (kg/m2)</b>											
<25	11 / 136	8.1 (4.1 – 14.0)	1	(Reference)		1	(Reference)		1	(Reference)	
25 – 29.9	40 / 259	15.4 (11.2 – 20.4)	1.91	(1.01–3.60)	0.046	1.84	(0.99–3.42)	0.052	1.38	(0.72-2.63)	0.33
≥ 30	47 / 154	30.5 (23.4 – 38.4)	3.77	(2.04–6.98)	<b>&lt;0.001</b>	3.64	(1.89–6.99)	<b>&lt;0.001</b>	2.13	(1.09-4.13)	<b>0.026</b>
<b>Waist circumference (cm)</b>											
M: <94 cm / F: <80 cm	5 / 58	8.6 (2.9 – 19.0)	1	(Reference)		1	(Reference)				
M: 94-101.9 cm / F: 80-87.9 cm	23 / 132	17.4 (11.4 – 25.0)	2.02	(0.81-5.06)	0.133	1.35	(0.55-3.35)	0.513			
M: ≥ 102 cm / F: ≥ 88 cm	70 / 359	19.5 (15.5 – 24.0)	2.26	(0.95-5.37)	0.064	0.85	(0.35-2.09)	0.726			
<b>Waist circumference (cm)</b>											
M: <94 / F: < 90	16 / 190	8.4 (4.9 – 13.3)	1	(Reference)					1	(Reference)	
M: ≥ 94 / F: ≥ 90	82 / 359	22.8 (18.6 – 27.5)	2.71	(1.63-4.50)	<b>&lt;0.001</b>				1.6	(0.90-2.83)	0.106
<b>Regular medication hypertension</b>											

No	76 / 471	16.1 (12.9 – 19.8)	1	(Reference)		1	(Reference)		1	(Reference)	
Yes	22 / 78	28.2 (18.6 – 39.5)	1.75	(1.16–2.63)	<b>0.008</b>	1.09	(0.71-1.68)	0.701	1.07	(0.69-1.66)	0.757
<b>History of hyperglycemia</b>											
No	62 / 465	13.3 (10.4 – 16.8)	1	(Reference)		1	(Reference)		1	(Reference)	
Yes	36 / 84	42.9 (32.1 – 54.1)	3.21	(2.29–4.51)	<b>&lt;0.001</b>	2.42	(1.69-3.47)	<b>&lt;0.001</b>	2.36	(1.6-3.35)	<b>&lt;0.001</b>
<b>Physical activity</b>											
Yes	33 / 170	19.4 (13.8 – 26.2)	1	(Reference)		1	(Reference)		1	(Reference)	
No	65 / 379	17.2 (13.5 – 21.3)	0.88	(0.61–1.29)	0.521	0.82	(0.58-1.17)	0.276	0.8	(0.57-1.14)	0.217
<b>Fruits and vegetables</b>											
Every day	30 / 195	15.4 (10.6 – 21.2)	1	(Reference)		1	(Reference)		1	(Reference)	
Not every day	68 / 354	19.2 (15.2 – 23.7)	1.25	(0.84–1.85)	0.268	1.44	(0.99-2.09)	0.053	1.38	(0.96-1.98)	0.086
<b>Diabetes in relatives</b>											
No	44 / 275	16.0 (11.9 – 20.9)	1	(Reference)		1	(Reference)		1	(Reference)	
Yes, grandparents, cousins, uncle, aunt	19 / 114	16.7 (10.3 – 24.8)	1.04	(0.64–1.70)	0.871	1.19	(0.73-1.95)	0.485	1.1	(0.67-1.78)	0.714
Yes, parents, siblings, son, daughter	35 / 160	21.9 (15.7 – 29.1)	1.37	(0.92–2.04)	0.125	1.41	(0.97-2.04)	0.07	1.3	(0.90-1.86)	0.158

174 PR: Prevalence rate. CI: Confidence interval 95%. Model A adjusted to components of FINDRISC. Model B adjusted to components of

175 LAFINDRISC.M:male- F:female.

176

## 177 Regression models

178 In both adjusted regression models, we found that age ( $\geq 65$ ), BMI ( $\geq 30$ ), and history of  
 179 hyperglycemia increased the probability of undiagnosed dysglycemia. Hypertension medication  
 180 was associated only in crude analysis Regarding waist circumference, the European and Latin  
 181 American cut-off points were not associated with this outcome in adjusted models, although the  
 182 LA was associated in the crude model. The FINDRISC presented a pseudo R2 of 0.1045 ( $p$   
 183  $<0.001$ ), while LAFINDRISC had a Pseudo R2 of 0.1034 ( $p <0.001$ ) (**Table 2**).

184

## 185 Comparison between Scores

186 The discriminatory diagnostic capacity of the LAFIDNRISC was statistically greater than the  
 187 FINDRISC, AUROC 71.5% (95% CI 65.8 – 77.2) vs 69.2% (95% CI 63.2 – 75.2);  $p = 0.007$ .  
 188 (**Fig 2**).

189 **Fig 2. Comparison of area under the ROC curves using the FINDRISC and**  
 190 **LAFINDRISC**

191 AUROC: Area under receiver operating characteristic curve

192

193 When stratifying them by sex, there was similar discrimination of both questionnaires in men  
 194 (61.6 vs 62.6%;  $p = 0.130$ ) as in women (73.9% vs 74.8%;  $p = 0.338$ ). LAFINDRISC also shows  
 195 better performance for diabetes mellitus and prediabetes. (**Table 3**)

196 **Table 3.** Area under the Receptor Operator Curves for undiagnosed dysglycemia, diabetes and prediabetes.

197

		<b>FINDRISC</b>	<b>LA-FINDRISC</b>	<b>p</b>
	n	Area under ROC curve (95% CI)	Area under ROC curve (95% CI)	
<b>Dysglycemia</b>				
<b>All population</b>	549	69.2% (63.2 – 75.2)	71.5% (65.8 – 77.2)	<b>0.007</b>

<b>Sex</b>				
<b>Male</b>	124	61.6% (50.7 – 72.5)	62.6% (51.9 – 73.3)	0.130
<b>Female</b>	425	73.9% (66.9 – 80.7)	74.8% (67.9 – 81.6)	0.338
<b>Age (years old)</b>				
<b>≥ 45 to more</b>	385	65.3% (58.2 – 72.3)	67.7% (60.9 – 74.4)	0.017
<b>≥ 55</b>	205	68.2% (59.0 – 77.4)	70.1% (61.3 – 78.9)	0.103
<b>≥ 65</b>	34	65.4% (46.1 – 84.7)	71.1 (53.7 – 88.4)	0.141
<b>Body mass index (kg/m2)</b>				
<b>≥ 25</b>	413	67.3% (60.8 – 73.9)	69.2% (62.9 – 75.4)	<b>0.039</b>
<b>≥ 30</b>	154	66.6% (57.2 – 75.9)	66.2% (57.3 – 75.9)	0.874
<b>Diabetes</b>				
<b>All population</b>	549	78.6% (68.2 – 88.9)	81.0% (72.0 – 89.9)	0.015
<b>Male</b>	124	65.4% (39.1 – 91.6)	67.6% (48.5 -86.7)	0.572
<b>Female</b>	425	80.7% (69.5 – 91.8)	83.2% (73.7 – 92.8)	0.005
<b>Prediabetes</b>				
<b>All population</b>	535	67.3% (60.6 – 73.7)	69.4% (63.1 – 75.7)	0.020
<b>Male</b>	122	61.1% (49.9 – 72.4)	62.1% (51.0 – 73.2)	0.177
<b>Female</b>	413	71.7% (63.9 – 79.6)	72.3% (64.4 – 80.1)	0.627

198 LA-FINDRISC: latin-America Findrisc.

199

200 In the LAFINDRISC, the score with the best Youden index was 11, showing sensitivity and  
 201 specificity of 78.6% (95% CI 69.1 – 86.2) and 51.7% (95% CI 46.9 – 56.4%) respectively, and a  
 202 negative likelihood ratio of 0.41 (CI95% 0.28 – 0.61) (**Table 4**). The supplementary material  
 203 describes the complete analysis and additional comparisons (**Table S2 y Table S3**).

204 **Table 4.** Discriminative characteristics of best cut-off points of FINDRISC and LAFINDRISC

	Increased sensitivity		Increased specificity	
	FINDRISC	LA-FINDRISC	FINDRISC	LA-FINDRISC
	(95% CI)	(95% CI)	(95% CI)	(95% CI)
<b>Cutt-off</b>	≥ 12	≥ 11*	≥ 14	≥ 14
Youden Index	0.24	0.30	0.31	0.34
% correct clasiffication	56.8%	56.5%	70.0%	73.0%
Sensitivity	<b>70.4% (60.3% - 79.2%)</b>	<b>78.6% (69.1% – 86.2%)</b>	59.2% (48.8%–69.0%)	58.2% (47.8%–68.1%)
Specificity	53.9% (49.2% - 58.6%)	51.7% (46.9% – 56.4%)	<b>72.3% (67.9%–76.4%)</b>	<b>76.3% (72.1%–80.1%)</b>
Likelihood ratio positive	1.53 (1.3 – 1.8)	1.63 (1.41 – 1.87)	2.14 (1.71–2.67)	2.45 (1.94–3.10)
Likelihood ratio negative	0.55 (0.4 – 0.75)	0.41 (0.28 – 0.61)	0.57 (0.44–0.72)	0.55 (0.43–0.70)
Diagnostic odd ratio	2.78 (1.74 – 4.44)	3.92 (2.35 – 6.54)	3.78 (2.41–5.93)	4.47 (2.84–7.04)
Positive predictive value <sup>†</sup>	24.9% (19.9% - 30.4%)	26.1% (21.2% - 31.5%)	31.7% (25.0%–39.0%)	34.8% (27.5%–42.6%)
Negative predictive value <sup>†</sup>	89.3% (85% - 92.7%)	91.7% (87.6%–94.8%)	89.1% (85.4%–92.1%)	89.4% (85.8%–92.2%)

205 <sup>a</sup> The score with the best discriminative capacity according to the Youden Index, and additionally, it had to demonstrate a higher sensitivity than206 specificity (See Table S3 and S4). <sup>b</sup> Prevalence assumption of 17.9%.

## 207 Simulations according to different scenarios of prevalence

208 We performed a simulation in 1000 patients with dysglycemia prevalence reported by the  
209 PERUDIAB (29.4%). The negative predictive value decreased from 91.7% to 85.3%, losing 6%  
210 of the test's ability to detect people without dysglycemia. (Table 5).

211

### 212 Table 5. Diagnostic accuracy and implications of using a risk score\*

213

214

Risk score	Cut-off	PPV	PPN	% sample	Dysglycemia	Subjects
					cases detected	without dysglycemia
<b>Prevalence 17.9%</b>						
FINDRISC	≥ 12	24.9%	89.3%	50.4%	126	495
LAFINDRISC	≥ 11	26.1%	91.7%	53.7%	140	462
<b>Prevalence 29.4%**</b>						
FINDRISC	≥ 12	38.8%	81.4%	53.2%	207	380
LAFINDRISC	≥ 11	40.3%	85.3%	57.2%	231	365

215

216 \*All the estimates were calculated assuming 1000 individuals screened

217 \*\*prevalence of dysglycemia: 20.4% from PERUDIAB

## 219 **DISCUSSION**

220 Our research found that one out of six healthcare subjects had undiagnosed dysglycemia. One out  
221 of seven had prediabetes, and one out of fifty had diabetes mellitus. We showed a greater  
222 discriminative capacity of LAFINDRISC than FINDRISC for screening undiagnosed  
223 dysglycemia in healthcare workers. The best cut-off points for LAFINDRISC and FINDRISC  
224 were 11 and 12, respectively. The change of the cut-off point from 102 cm to 94 cm in men and  
225 from 88 to 90 cm in women better validated the results.

226 FINDRISC obtained an area under the ROC curve between 85 and 87 % to predict drug-treated  
227 diabetes mellitus at ten years of follow-up.[22] In a captive population of northern Colombia,  
228 LAFINDRISC obtained an area under the ROC curve of 73% for undiagnosed dysglycemia. [13].  
229 LAFINDRISC received an area under the ROC curve of 68% for undiagnosed DM [23]. In both  
230 studies, there were no differences between LAFINDRISC and original FINDRISC. In our work,  
231 the area under the ROC curve was also lower than the original, with a difference of 2.3%. in favor  
232 of LAFINDRISC (71.5% vs. 69.2%). When a clinical prediction rule is validated in a population  
233 different from the original one or when a different outcome is evaluated, the discriminatory  
234 capacity tends to decrease.

235 We chose the Youden index to define the best score. Due to its screening purpose, it should have  
236 a higher sensitivity than specificity. [24]. In our study, a score of 14 obtained the highest Youden  
237 Index with specificity greater than sensitivity. However, we chose score 11, which presented the  
238 second-best Youden Index and the requirement of having a higher sensitivity than specificity. In  
239 Colombia, a score  $\geq 8$  showed the highest Youden Index with a sensitivity of 78% and specificity  
240 of 50% for dysglycemia [13]. In Peru, a cut-off point of 10 of the LAFINDRISC presented a  
241 sensitivity of 70.4% and specificity of 59.1% for undiagnosed diabetes mellitus. [23] However,  
242 the original FINDRISC validation study chose the best cut-off point if it presented a negative  
243 predictive value of 99%.This criterion ensures that 1% or less of those discarded would be false  
244 negatives. If we apply this last criterion, the cut-off point would be five, and it would imply



245 performing a second confirmatory examination on 85.1% of the population. This policy will  
246 require a higher investment and be challenging to carry out in developing economies. [22]  
247 Both questionnaires presented the same performance for dysglycemia when separately analysed  
248 in men or women in our study. Nevertheless, regardless of the questionnaire used, performance  
249 in women was 12% higher than that of men. In Latin America, the area under the ROC curve of  
250 LAFINDRISC for dysglycemia in Bogotá was 76.9% in men and 77.9% in women. In  
251 Barquisimeto, the area under the ROC curve was 91.2% in men and 92.0% in women.  
252 Performance was slightly higher in women than in men in both cities.[25]. In a nationwide  
253 Venezuelan study, there were no differences between FINDRISC and LAFINDRISC for  
254 dysglycemia when analyzing men and women separately.[14].

## 255 Plausibility and explanation of results

256 Isolated fasting hyperglycemia implies insulin deficiency and hepatic insulin resistance but with  
257 normal muscle insulin sensitivity. This is executed by counterregulatory hormones in a context  
258 with increased lipolysis of adipose tissue and fatty esterification of liver cells that exaggerate  
259 fasting gluconeogenesis. In contrast, postprandial hyperglycemia implies a failure of secretion  
260 plus a decrease in hepatic sensitivity and moderate or high muscular resistance, preventing the  
261 internalization of glucose through GLUT4 receptors in muscle and liver. Fasting hyperglycemia  
262 could be considered an earlier failure and would predominate above all in subjects with abdominal  
263 obesity, acanthosis nigricans, skin tags or metabolic syndrome. [26]

264 The better performance in women may be due to the high percentage of excess weight. In our  
265 study, 75% had a body mass index > 25%. Likewise, the high frequency of excess weight and  
266 abdominal obesity in our healthcare workers exceeds the national average in the general  
267 population. [27] This risk is due to workgroups that perform shift work. Highlighting the nursing  
268 staff's risk of obesity and other metabolic problems represents a large percentage of healthcare  
269 workers. [28]

270 Despite this high excess weight and abdominal obesity, our study only found 17.8% of  
271 undiagnosed dysglycemia. A difference of 11.6% concerning the national prevalence[17]. Annual

272 occupational controls could explain this lower prevalence to detect metabolic disorders that  
273 decreased their frequency in our sample.

## 274 Limitations and strengths

275 Our study has limitations. In the first place, the chosen score cannot be used in the general  
276 population since the findings would only apply to healthcare personnel of the María Auxiliadora  
277 hospital. A complimentary evaluation in a more representative population was not performed. But  
278 a simulation was performed by changing the prevalence of dysglycemia to observe the variation  
279 in performance. We do not use glycosylated hemoglobin as a confirmatory method for  
280 dysglycemia, as we do not have methods validated by the National Glycohemoglobin  
281 Standardization Program. However, the ADA guideline recommends OGTT as a sufficient  
282 criterion for dysglycemia. Although the best discriminatory capacity of LAFINDRISC is  
283 clinically small, an instrument adapted to local characteristics is always desirable. Despite these  
284 concerns, our study has important strengths, such as using a modified questionnaire with cut-off  
285 points for the Latin American obesity phenotype. In addition, subjects were randomly selected  
286 based on the sample frame of workers' payroll with minimal subject loss. OGTT was performed  
287 on all participants, regardless of the questionnaire result, avoiding selection bias.

## 288 Implications, recommendations and future research

289 Quantifying the risk of diabetes or dysglycemia is a cost-effective activity recommended by the  
290 Clinical Practice Guidelines. Applying the clinical prediction rules outside the original context  
291 requires a validation process to check if the discriminative capacity is maintained. External  
292 validations in Colombia and Peru found no differences in performance between FINDRISC and  
293 LAFINDRISC. Both studies were carried out in private insurance people and the general  
294 population, respectively [23] [31]. Despite these results, transculturation of Clinical Prediction  
295 Rules according to the local characteristics should be the standard before applications. [10]  
296 Governments or funders will require complementary cost-effectiveness analysis and decision tree  
297 analysis for potential outcomes to apply the early diagnosis in public health.[29] It will impact

298 the costs of screening, confirmatory diagnosis, follow-up, and treatment. As well as evaluation of  
299 potential benefits in reducing years of life gained and greater survival.[30,31]  
300 Each country, institution, or funder chooses the cut-off point and establishes the strategy that best  
301 suits their reality. The original FINDRISC validation study determined that the best score for  
302 diabetes mellitus screening was 11. However, the Finnish Diabetes Prevention Program  
303 recommends performing OGTT from a score of 15 and initiating lifestyle changes from 7.[32]  
304 The clinical guideline of the Colombian Ministry of Health [8] recommends performing fasting  
305 blood glucose as a confirmatory test for a score > 15 and initiating lifestyle changes if score  $\geq$  12.  
306 These actions are derived from decision analysis and may vary according to economic and  
307 administrative conditions.

## 308 **Conclusion**

309 The discriminative capacity of both questionnaires is good for the diagnosis of dysglycemia in  
310 the health care personnel of the María Auxiliadora hospital. With LAFRINDRISC presenting a  
311 small statistical difference, but clinically similar since there was no difference by age or sex.  
312 Further studies in the general population are required to validate these results.

313

## 314 **References**

- 315 [1] Williams R, Karuranga S, Malanda B, Saeedi P, Basit A, Besançon S, et al. Global and  
316 regional estimates and projections of diabetes-related health expenditure: Results from  
317 the International Diabetes Federation Diabetes Atlas, 9th edition. *Diabetes Res Clin*  
318 *Pract* 2020;162:108072. <https://doi.org/10.1016/J.DIABRES.2020.108072>.
- 319 [2] International Diabetes Federation. *IDF Diabetes Atlas Ninth edition 2019*. 9th ed.  
320 Belgium: International Diabetes Federation; 2019.
- 321 [3] Seclen S, Rosas M, Arias A, Medina C. Elevated incidence rates of diabetes in Peru:  
322 Report from PERUDIAB, a national urban population-based longitudinal study. *BMJ*  
323 *Open Diabetes Res Care* 2017;5:1–6. <https://doi.org/10.1136/bmjdr-2017-000401>.

- 324 [4] Dunkley AJ, Bodicoat DH, Greaves CJ, Russell C, Yates T, Davies MJ, et al. Diabetes  
325 Prevention in the Real World: Effectiveness of Pragmatic Lifestyle Interventions for the  
326 Prevention of Type 2 Diabetes and of the Impact of Adherence to Guideline  
327 Recommendations. *Diabetes Care* 2014;37:922–33. <https://doi.org/10.2337/DC13-2195>.
- 328 [5] American Diabetes Association. 3. Prevention or Delay of Type 2 Diabetes: Standards of  
329 Medical Care in Diabetes—2021. *Diabetes Care* 2021;44:S34–9.  
330 <https://doi.org/10.2337/DC21-S003>.
- 331 [6] American Diabetes Association. 2. Classification and Diagnosis of Diabetes: Standards  
332 of Medical Care in Diabetes—2021. *Diabetes Care* 2021;44:S15–33.  
333 <https://doi.org/10.2337/DC21-S002>.
- 334 [7] Chatterton H, Younger T, Fischer A, Khunti K. Risk identification and interventions to  
335 prevent type 2 diabetes in adults at high risk: summary of NICE guidance. *BMJ*  
336 2012;345. <https://doi.org/10.1136/BMJ.E4624>.
- 337 [8] Sistema General de Seguridad Social en Salud - Colombia. Guía de Práctica Clínica  
338 (GPC) para el diagnóstico, tratamiento y seguimiento de la diabetes mellitus tipo 2 en la  
339 población mayor de 18 años. 1ra Edició. Bogotá: 2015.
- 340 [9] Carrillo-Larco R, Aparcana-Granda D, Mejia J, Bernabé-Ortiz A. FINDRISC in Latin  
341 America: a systematic review of diagnosis and prognosis models. *BMJ Open Diabetes  
342 Res Care* 2020;8. <https://doi.org/10.1136/BMJDR-2019-001169>.
- 343 [10] Nieto-Martínez R, González-Rivas JP, Aschner P, Barengo NC, Mechanick JI.  
344 Transculturalizing Diabetes Prevention in Latin America. *Ann Glob Heal* 2017;83:432–  
345 43. <https://doi.org/10.1016/j.aogh.2017.07.001>.
- 346 [11] Ramspek CL, Jager KJ, Dekker FW, Zoccali C, van Diepen M. External validation of  
347 prognostic models: what, why, how, when and where? *Clin Kidney J* 2021;14:49–58.  
348 <https://doi.org/10.1093/CKJ/SFAA188>.
- 349 [12] Aschner P, Buendia R, Brajkovich I, Gonzalez A, Figueredo R, Juarez XE, et al.  
350 Determination of the cutoff point for waist circumference that establishes the presence of  
351 abdominal obesity in Latin American men and women. *Diabetes Res Clin Pract*

- 352 2011;93:243–7. <https://doi.org/10.1016/j.diabres.2011.05.002>.
- 353 [13] Barengo NC, Tamayo DC, Tono T, Tuomilehto J. A Colombian diabetes risk score for  
354 detecting undiagnosed diabetes and impaired glucose regulation. *Prim Care Diabetes*  
355 2017;11:86–93. <https://doi.org/10.1016/j.pcd.2016.09.004>.
- 356 [14] Nieto-Martínez R, González-Rivas JP, Ugel E, Marulanda MI, Durán M, Mechanick JI,  
357 et al. External validation of the Finnish diabetes risk score in Venezuela using a national  
358 sample: The EVESCAM. *Prim Care Diabetes* 2019;13:574–82.  
359 <https://doi.org/10.1016/J.PCD.2019.04.006>.
- 360 [15] Khosravipour M, Khanlari P, Khazaie S, Khosravipour H, Khazaie H. A systematic  
361 review and meta-analysis of the association between shift work and metabolic syndrome:  
362 The roles of sleep, gender, and type of shift work. *Sleep Med Rev* 2021;57:101427.  
363 <https://doi.org/10.1016/J.SMRV.2021.101427>.
- 364 [16] Mutie PM, Pomares-Millan H, Atabaki-Pasdar N, Jordan N, Adams R, Daly NL, et al.  
365 An investigation of causal relationships between prediabetes and vascular complications.  
366 *Nat Commun* 2020;11:1–11. <https://doi.org/10.1038/s41467-020-18386-9>.
- 367 [17] Seclen SN, Rosas ME, Arias AJ, Huayta E, Medina CA. Prevalence of diabetes and  
368 impaired fasting glucose in Peru: report from PERUDIAB, a national urban population-  
369 based longitudinal study. *BMJ Open Diabetes Res Care* 2015;3:e000110.  
370 <https://doi.org/10.1136/bmjdr-2015-000110>.
- 371 [18] World Health Organization. Physical status: the use and interpretation of anthropometry.  
372 Report of a WHO Expert Committee. *World Health Organ Tech Rep Ser* 1995;854:1–  
373 452. [https://doi.org/10.1002/\(sici\)1520-6300\(1996\)8:6<786::aid-ajhb11>3.0.co;2-i](https://doi.org/10.1002/(sici)1520-6300(1996)8:6<786::aid-ajhb11>3.0.co;2-i).
- 374 [19] Committee ADAPP. 2. Classification and Diagnosis of Diabetes: Standards of Medical  
375 Care in Diabetes—2022. *Diabetes Care* 2022;45:S17–38. <https://doi.org/10.2337/DC22-S002>.
- 376
- 377 [20] Advanced Research and Diagnostic Laboratory / University of Minnesota. Laboratory  
378 Procedure Manual - Glucose. *Cent Dis Control Prev* n.d.  
379 <https://wwwn.cdc.gov/nchs/data/nhanes/2017-2018/labmethods/BIOPRO-J-MET->

- 380           Glucose-508.pdf (accessed February 1, 2022).
- 381   [21]   Cowley LE, Farewell DM, Maguire S, Kemp AM. Methodological standards for the  
382           development and evaluation of clinical prediction rules: a review of the literature.  
383           Diagnostic Progn Res 2019;3:1–23. <https://doi.org/10.1186/S41512-019-0060-Y>.
- 384   [22]   Lindström J, Tuomilehto J. The Diabetes Risk Score. Diabetes Care 2003;26:725.  
385           <https://doi.org/10.2337/diacare.26.3.725>.
- 386   [23]   Bernabe-Ortiz A, Perel P, Miranda JJ, Smeeth L. Diagnostic accuracy of the Finnish  
387           Diabetes Risk Score (FINDRISC) for undiagnosed T2DM in Peruvian population. Prim  
388           Care Diabetes 2018;12:517–25. <https://doi.org/10.1016/j.pcd.2018.07.015>.
- 389   [24]   Staffa SJ, Zurakowski D. Statistical Development and Validation of Clinical Prediction  
390           Models. Anesthesiology 2021;135:396–405.  
391           <https://doi.org/10.1097/ALN.0000000000003871>.
- 392   [25]   Aschener P, Nieto R, Marín A, Rios M. Evaluation of the FindrisC score as a screening  
393           tool for people with impaired glucose regulation in Latin America using modified score  
394           points for waist circumference according to the validated regional cutoff values for  
395           abdominal obesity. Minerva Endocrinol 2012;37:114.  
396           <https://doi.org/10.1192/bjp.111.479.1009-a>.
- 397   [26]   Nathan DM, Davidson MB, DeFronzo RA, Heine RJ, Henry RR, Pratley R, et al.  
398           Impaired Fasting Glucose and Impaired Glucose Tolerance Implications for care.  
399           Diabetes Care 2007;30:753–9. <https://doi.org/10.2337/DC07-9920>.
- 400   [27]   Villena Chávez JE. Prevalencia de sobrepeso y obesidad en el Perú. Rev Peru Ginecol y  
401           Obstet 2017;63:593–8.
- 402   [28]   Zhang Q, Chair SY, Lo SHS, Chau JPC, Schwade M, Zhao X. Association between shift  
403           work and obesity among nurses: A systematic review and meta-analysis. Int J Nurs Stud  
404           2020;112:103757. <https://doi.org/10.1016/J.IJNURSTU.2020.103757>.
- 405   [29]   Jayanthi N, Babu BV, Rao NS. Survey on clinical prediction models for diabetes  
406           prediction. J Big Data 2017 41 2017;4:1–15. [https://doi.org/10.1186/S40537-017-0082-](https://doi.org/10.1186/S40537-017-0082-7)  
407           7.

- 408 [30] Griffin SJ, Borch-Johnsen K, Davies MJ, Khunti K, Rutten GE, Sandbæk A, et al. Effect  
409 of early intensive multifactorial therapy on 5-year cardiovascular outcomes in  
410 individuals with type 2 diabetes detected by screening (ADDITION-Europe): a cluster-  
411 randomised trial. *Lancet* 2011;378:156–67. [https://doi.org/10.1016/S0140-](https://doi.org/10.1016/S0140-6736(11)60698-3)  
412 [6736\(11\)60698-3](https://doi.org/10.1016/S0140-6736(11)60698-3).
- 413 [31] Jonas DE, Crotty K, Yun JDY, Middleton JC, Feltner C, Taylor-Phillips S, et al.  
414 Screening for Prediabetes and Type 2 Diabetes: Updated Evidence Report and  
415 Systematic Review for the US Preventive Services Task Force. *JAMA* 2021;326:744–  
416 60. <https://doi.org/10.1001/JAMA.2021.10403>.
- 417 [32] Saaristo T, Peltonen M, Keinänen-Kiukaanniemi S, Vanhala M, Saltevo J, Niskanen L,  
418 et al. National type 2 diabetes prevention programme in Finland: FIN-D2D.  
419 [Http://DxDoiOrg/103402/IjchV66i218239](http://dx.doi.org/10.3402/IJCH.V66I2.18239) 2007;66:101–12.  
420 <https://doi.org/10.3402/IJCH.V66I2.18239>.

421

## 422 **Supporting information**

423 **S1 Table. Scores of FINDRISC and LAFINDRISC**

424 **S2 Table. Performance of LAFINDRISC regarding different cut-off points**

425 **S3 Table. Performance of FINDRISC regarding different cut-off points**

medRxiv preprint doi: <https://doi.org/10.1101/2024.02.16.24302929>; this version posted February 18, 2024. The copyright holder for this preprint (which was not certified by peer review) is the author/funder, who has granted medRxiv a license to display the preprint in perpetuity. It is made available under a [CC-BY 4.0 International license](#).

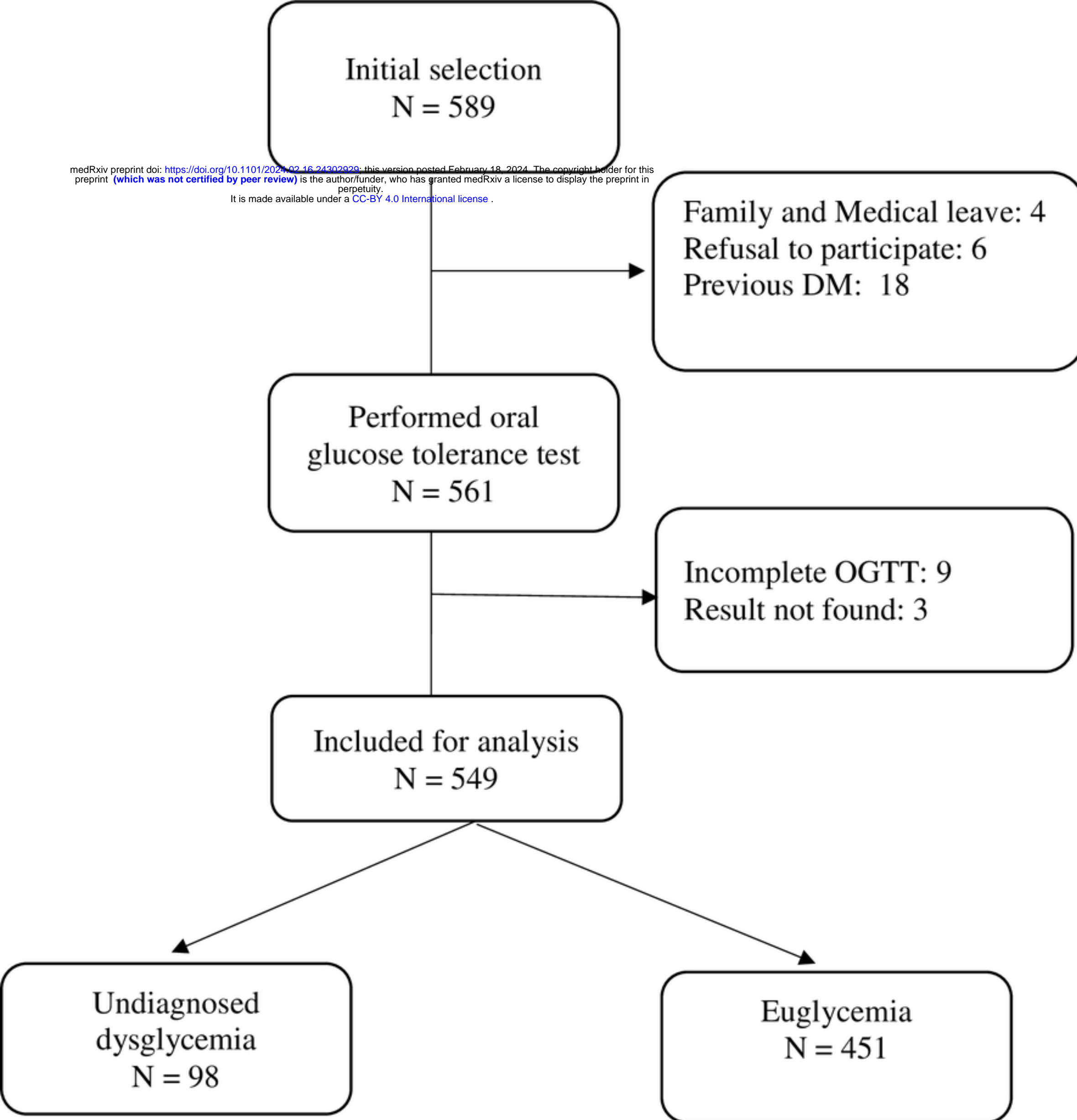


Figure 1



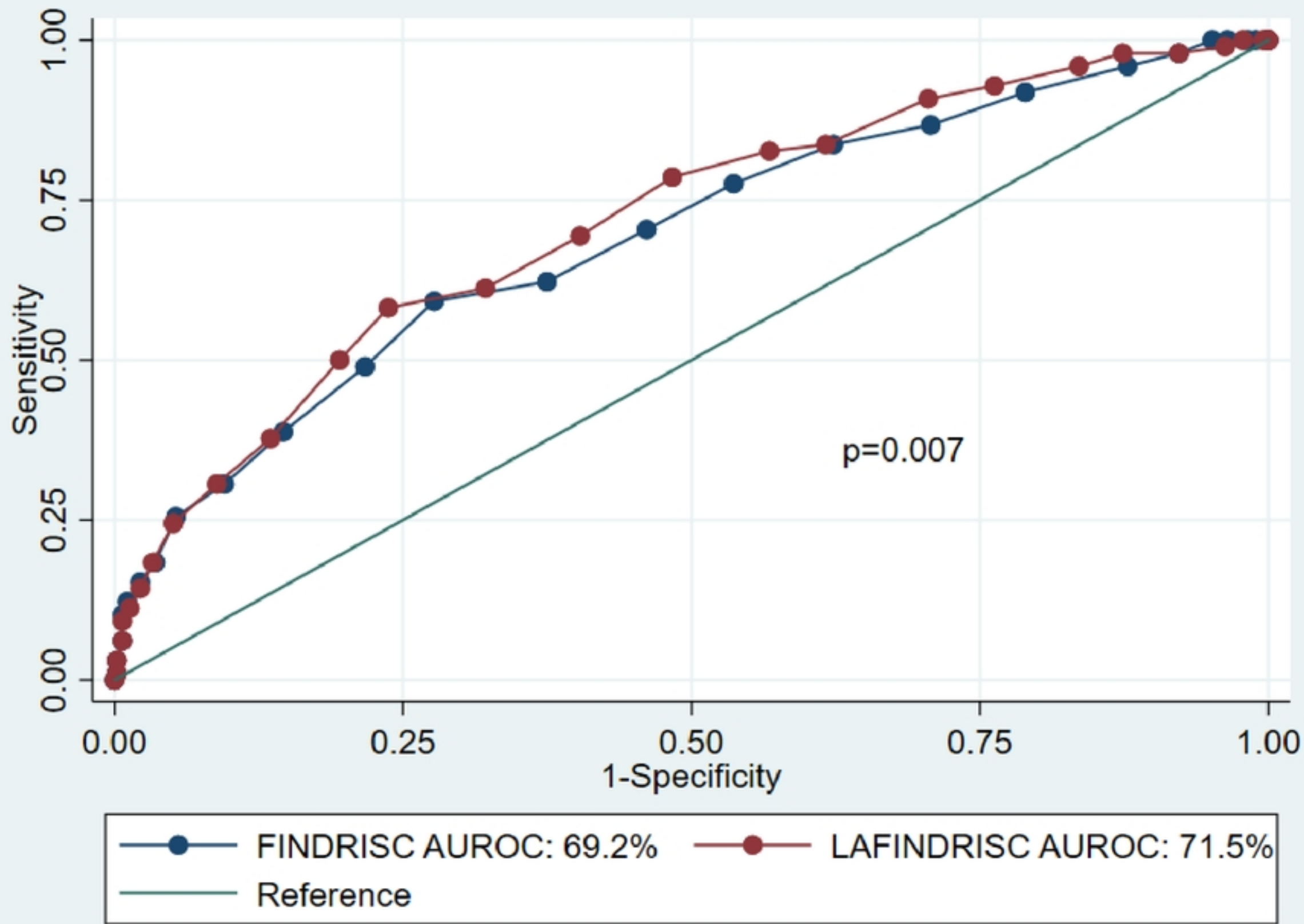


Figure 2