

1 **Supplementary Material**

2 **Supplementary table 1: Primers and probes used in multiplex qPCR reaction**

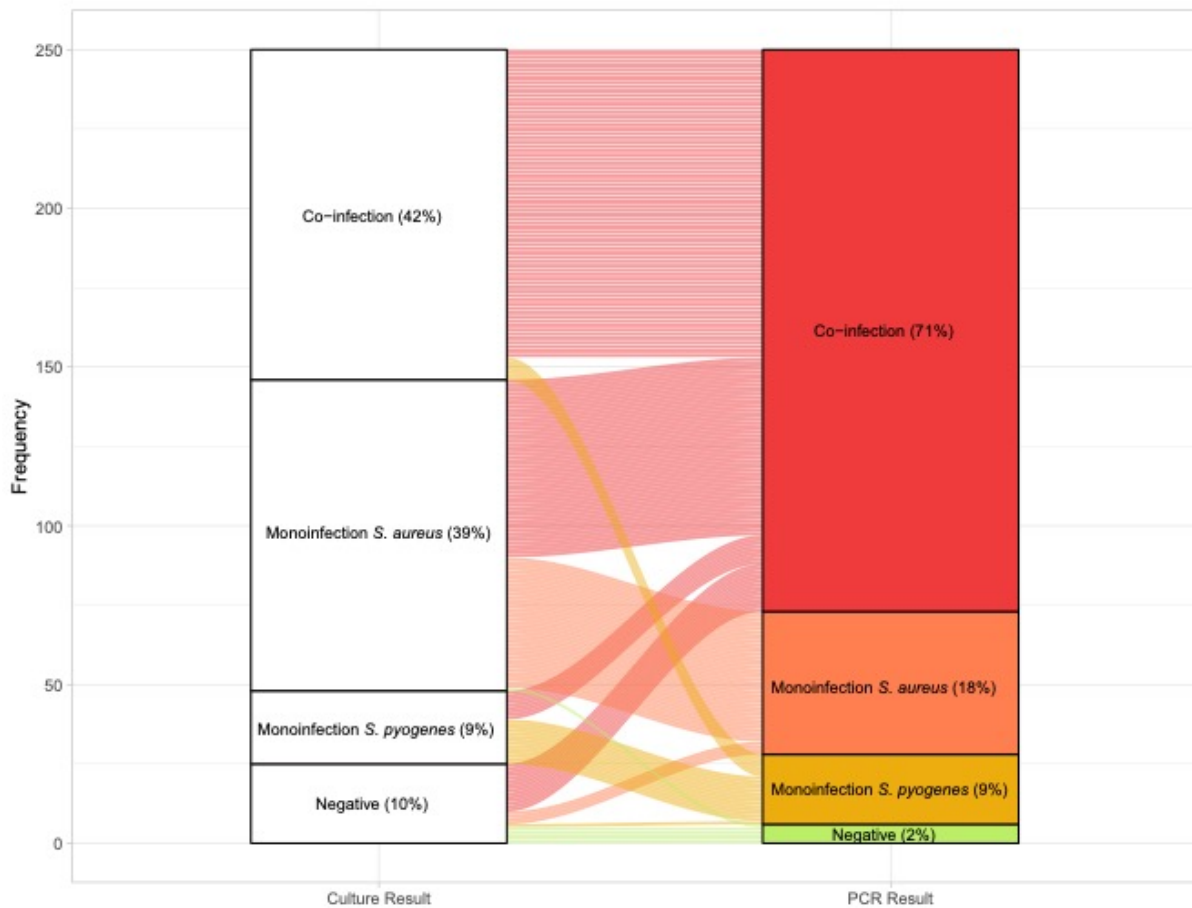
Target	Forward	Sequence	Volume per 25µL reaction (µL)
<i>speB</i>	Forward primer	5' CTAAACCCTTCAGCTCTTGGTACTG 3'	0.75
	Reverse primer	5' TTGATGCCTACAACAGCACTTTG 3'	0.75
	Probe	5' Cy5-CGGCGCAGGCGGCTTCAAC-BHQ2 3'	0.875
<i>nuc</i>	Forward primer	5' CATCCTAAAAAAGGTGTAGAGA 3'	1
	Reverse primer	5' TTCAATTTTMTTTCATTTTCTACCA 3'	1
	Probe	5' YY-TTTTCGTAAATGCACTTGCTTCAGGACCA-BHQ1 3'	0.5
SSR5	Forward primer	5' GTCGAAGGTGGAGACAAAGATAG 3'	1
	Reverse primer	5' CGGACTCTTCATCGATTGGTATC 3'	1
	Probe	5' 6FAM-TCGTTGAGA/ZEN/TGAAGCGACCAGGAGATG-3IABkFQ 3'	0.5

3

4 **Supplementary table 2: Pathogen identification by qPCR compared to bacteriological culture.**

Target organism PCR result	Target organism culture result		Total N
	Positive N (%)	Negative N (%)	
<i>Streptococcus pyogenes</i>			
Positive	127 (50.8)	72 (28.8)	199
Negative	0 (0)	51 (20.4)	51
Total	127 (50.8)	123 (49.2)	250
<i>Staphylococcus aureus</i>			
Positive	194 (77.6)	28 (11.2)	222
Negative	8 (3.2)	20 (8)	28
Total	202 (80.8)	48 (19.2)	250

5



6

7 **Supplementary figure 1:** Change in distribution of bacteriological results between culture and
 8 qPCR.

9

10

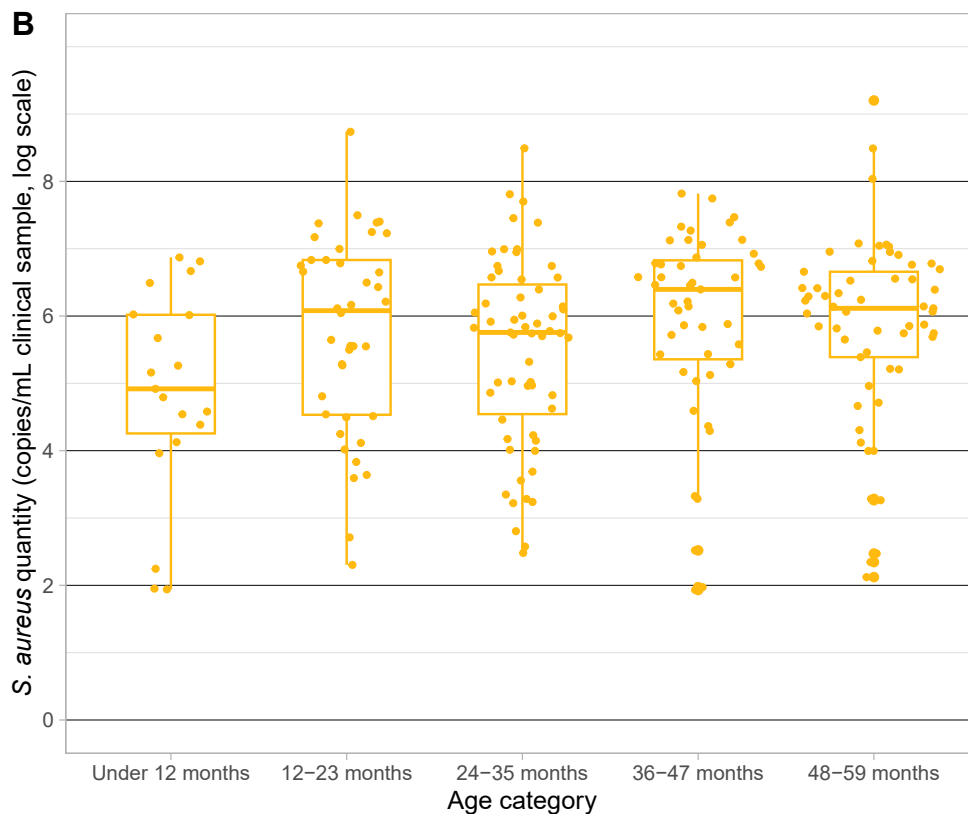
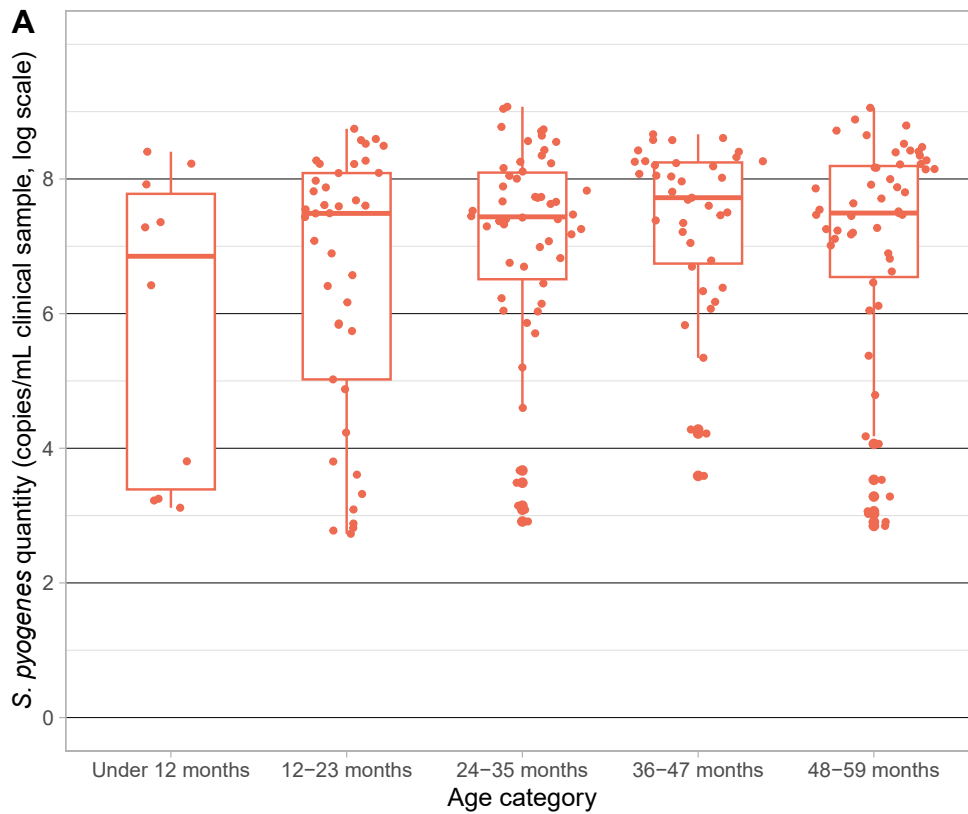
11 **Supplementary table 3:** Identification of *S. scabiei* by qPCR compared to clinical diagnosis.

12

Clinical diagnosis	PCR positive N (%)	PCR negative N (%)	Total N
Infected scabies	4 (16)	21 (84)	25
Scabies elsewhere	7 (16)	38 (84)	45
No scabies	32 (18)	148 (82)	180

13

14 'Scabies elsewhere' = Individuals where scabies and pyoderma were present at different body
 15 sites. The swab was taken from the pyoderma lesion.

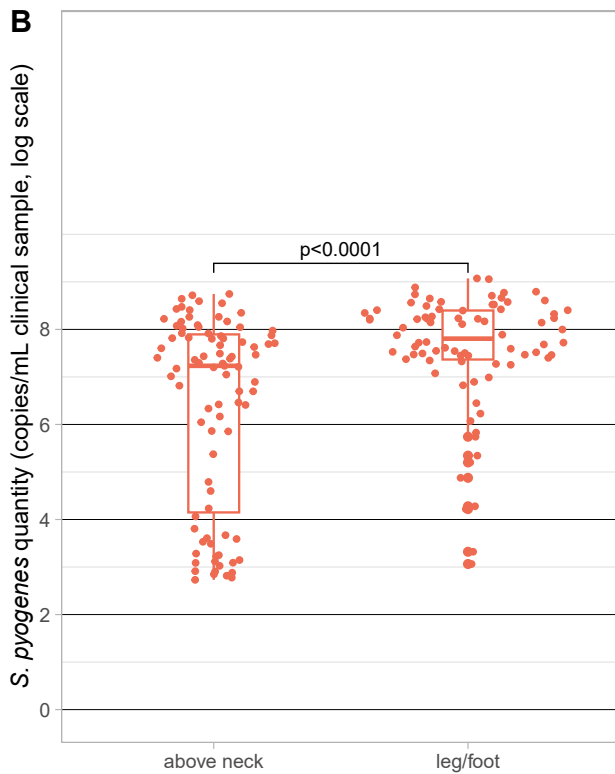
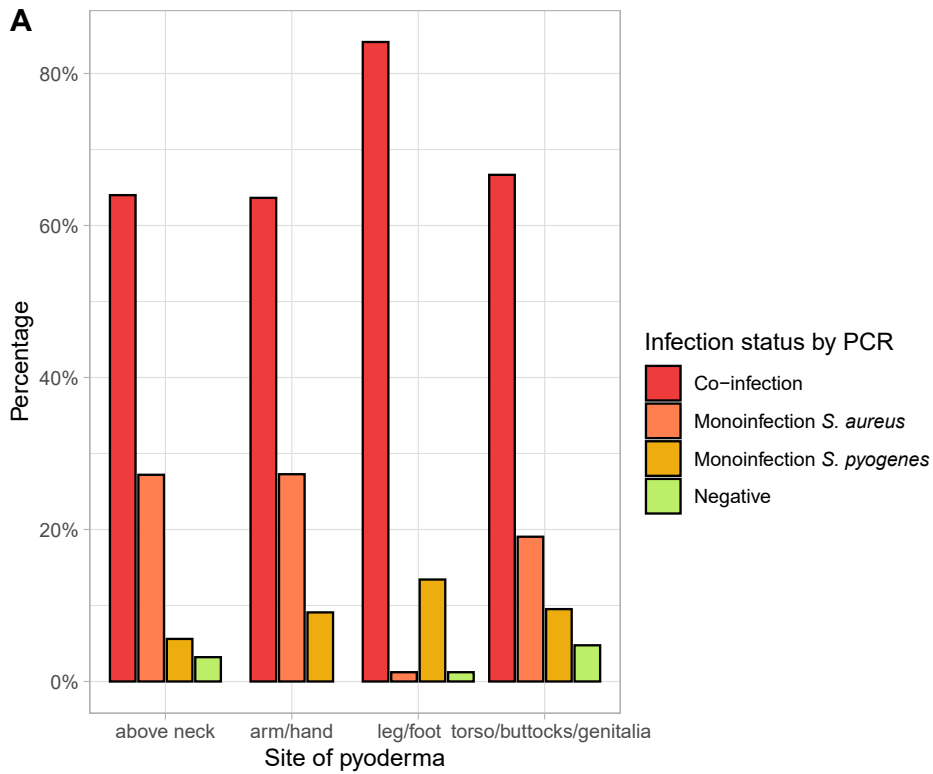


16

17 **Supplementary figure 2:** Bacterial quantity in PCR-positive samples for (A) *S. pyogenes* and

18 (B) *S. aureus*, by age category. Pairwise comparisons using two-tailed Mann Whitney U tests

19 showed no significant difference in quantity between age categories.



20

21 **Supplementary figure 3: (A)** Participant infection status by site of pyoderma, as determined
 22 by qPCR result. Those with infection status 'Negative' had a clinical diagnosis of pyoderma but
 23 neither *S. pyogenes* nor *S. aureus* were detected by qPCR. **(B)** Sample bacterial quantity for *S.*

24 *pyogenes* in samples taken from pyoderma lesions above the neck and in the leg or foot.

25 Statistical differences determined using a two-tailed Mann Whitney U test.

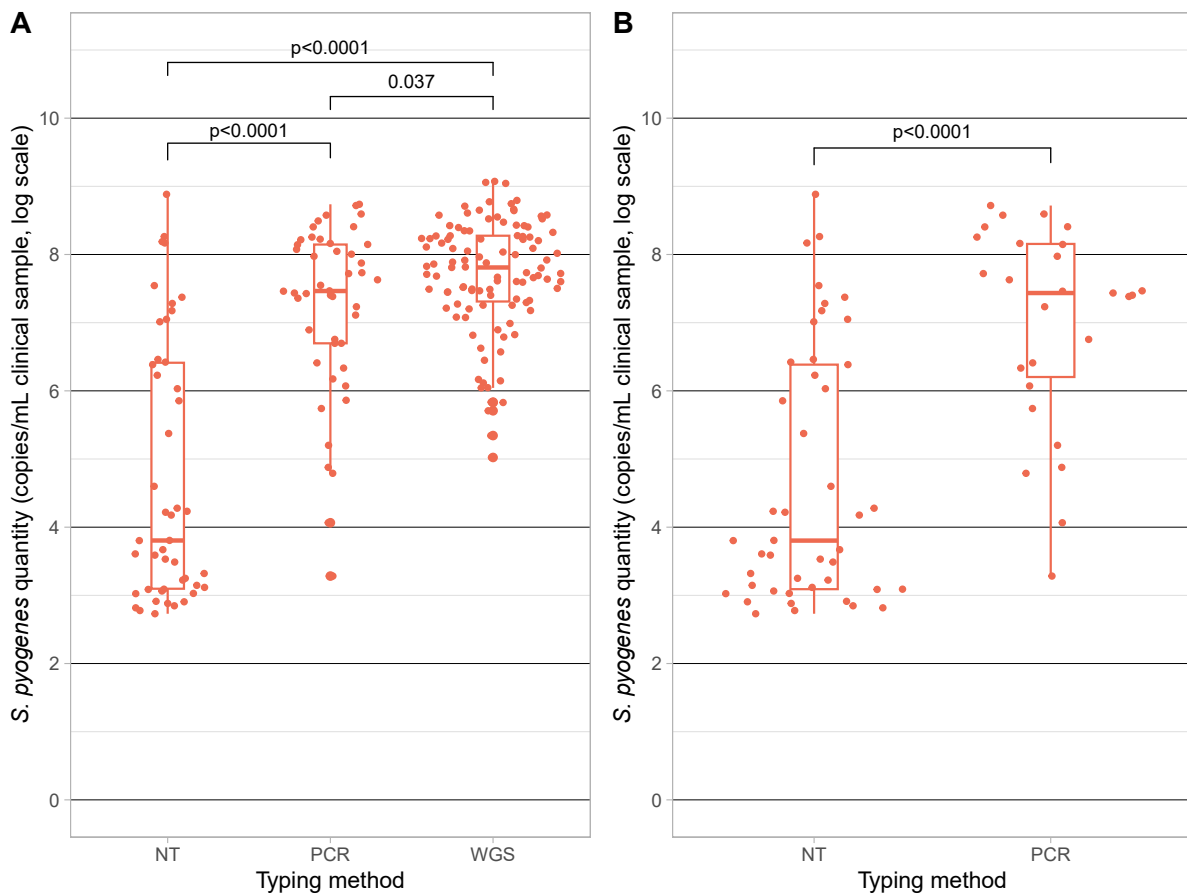
26

27 **Supplementary table 4: emm-typing by culture status.**

Typing method	Culture positive, PCR positive N (%)	Culture negative, PCR positive N (%)	Total N
Emm-typed by WGS	107	-	107
Emm-typed by PCR	19 (41.3)	27 (58.7)	46
Nested PCR alone	0 (0)	27 (100)	27
Nested PCR + PCR with Q5	19 (100)	0 (0)	19
Could not be typed	1 (2.2)	45 (97.8)	46

28 WGS was attempted on culture-positive samples only.

29



30

31 **Supplementary figure 4: Bacterial quantity in *S. pyogenes* qPCR-positive samples according to**

32 **emm-typing method for (A) all samples and (B) culture-negative samples. NT = not typeable**

33 by WGS or PCR. Statistical differences determined using a two-tailed Mann Whitney U test.
 34 There was no statistical difference in bacterial quantity between samples typed using nested
 35 PCR alone compared to samples requiring nested PCR and an additional amplification using
 36 Q5.

37

38 **Supplementary table 5:** Summary of total participant number, number with pyoderma,
 39 number with *S. pyogenes* on qPCR, and *emm*-typing, by geographical cluster.

Geographical cluster ID	All participants	Participants with pyoderma	<i>S. pyogenes</i> PCR positive	No of isolates <i>emm</i> -typed (WGS + PCR)	No of different <i>emm</i> -types	<i>emm</i> -types (N) identified by PCR but not WGS
6	277	74	55	40	27	4 (1); 28 (1); 65 (1); 73 (2); 74 (1); 77 (1); 82 (1); 85 (1); 88 (1); 109 (1); 116 (1); 119 (1); 209 (1)
5	82	43	41	30	18	4 (3); 25 (1); 74 (1); 81 (1)
22	68	36	30	25	20	56 (1); 66 (2); 74 (1); 75 (1); 85 (1); 89 (1); 104 (1); 119 (1)
17	306	34	22	18	12	18 (2); 81 (1); 118 (1); 208 (1); 209 (2)
21	243	21	16	12	11	86 (1); 109 (1); 111 (1)
13	113	18	16	12	8	4 (2)
16	189	15	12	9	8	102 (1)
33	207	7	5	5	4	88 (1); 104 (1); 111 (1)
20	62	2	2	2	2	105 (1)
Total	1547	250	199	153		

40 Clusters ordered by detected number of pyoderma cases, from high to low.