

Supplementary Materials

Daily variation in blood glucose levels during continuous enteral nutrition in patients on the Intensive Care Unit: a retrospective observational study

Authors: F.W. Hiemstra^{1,2}, D.J. Stenvers^{3,4,5}, A. Kalsbeek^{3,5,6,7}, E. de Jonge¹, D.J. van Westerloo¹, L. Kervezee²

¹Department of Intensive Care, Leiden University Medical Center, Albinusdreef 2, 2333 ZA, Leiden, The Netherlands

²Group of Circadian Medicine, Department of Cell and Chemical Biology, Leiden University Medical Center, Albinusdreef 2, 2333 ZA, Leiden, The Netherlands

³Department of Endocrinology and Metabolism, Amsterdam UMC location University of Amsterdam, Meibergdreef 9, 1105 AZ Amsterdam, The Netherlands⁴Department of Endocrinology and Metabolism, Amsterdam UMC location Vrije Universiteit, Meibergdreef 9, 1105 AZ Amsterdam, The Netherlands

⁵Amsterdam Gastroenterology Endocrinology Metabolism, Amsterdam UMC, Meibergdreef 9, 1105 AZ Amsterdam, The Netherlands

⁶Netherlands Institute for Neuroscience (NIN), Royal Dutch Academy of Arts and Sciences (KNAW), Meibergdreef 47, 1105 BA Amsterdam, The Netherlands

⁷Laboratory of Endocrinology, Department of Laboratory Medicine, Amsterdam UMC location University of Amsterdam, Meibergdreef 9, 1105 AZ Amsterdam, The Netherlands

TABLE OF CONTENTS

SUPPLEMENTARY METHODS	3
Supplementary Methods S1: XGBoost analysis using SHAP values	
Supplementary Methods S2: Formulas of linear mixed-effects models	
SUPPLEMENTARY TABLES	4
Supplementary Table S1: Carbohydrate content for each nutrition product present in the dataset.	
Supplementary Table S2: Overview of variables included in the linear mixed-effects models and XGBoost model.	
Supplementary Table S3: Characteristics of included glucose measuring (during enteral feeding episodes).	
Supplementary Table S4: Results of log-likelihood ratio test to compare model fits.	
Supplementary Table S5: Number of glucose measurements and patients for each subgroup in sensitivity analysis.	
SUPPLEMENTARY FIGURES	7
Supplementary Figure S1: Overview of variables included in the statistical analysis.	
Supplementary Figure S2: Proportion of glucose measurements taken during administration of insulin, dextrose, and glucocorticoids by time of day.	
Supplementary Figure S3: Glucose levels over time, normalized per patient.	
Supplementary Figure S4: Model diagnostic plots of final linear mixed-effects model.	
Supplementary Figure S5: SHAP analysis of XGBoost regression model.	
Supplementary Figure S6: SHAP dependence plots of carbohydrate administration rate, insulin administration rate, dextrose administration rate and age.	
REFERENCES	13

SUPPLEMENTARY METHODS

Supplementary Methods S1: XGBoost analysis using SHAP values

In order to show robustness of our results obtained with the linear mixed-effects model, the analysis was repeated using the same dataset with an Extreme Gradient Boosting (XGBoost) regression model.¹ XGBoost is a widely adopted machine learning algorithm that uses ensembling of decision trees within a gradient boosting framework and is known for its computational efficiency and good performance. XGBoost analysis and visualization was performed using Python programming language (version 3.10.2) using xgboost package version 1.7.6¹, shap package version 0.41.0² and scikit-learn version 1.3.0.³

The variables that were used as fixed effects in linear mixed-effects model 4 were used as features in a XGBoost regression model: age, sex, diabetes diagnosis, time of day, administration rates of carbohydrate (grams/hour), dextrose (grams/hour) and insulin (units/hour) and administration of glucocorticoids (yes/no). In contrast to linear mixed-effects model, time of day was used as continuous variable (in decimal units from 0 to 24) in the XGBoost regression model (ranging from 0 to 24), and age and administration rates of carbohydrate, insulin and dextrose were used as continuous variables. Glucose level (in mmol/L) was the target variable (Supplementary Table S1).

Tuning of hyperparameter (i.e. a parameter that is set before the learning process and whose value is used to control the learning process) is essential to optimize model performance and generalization. We used a grid search with 5-fold cross-validation for hyperparameter tuning. The ranges of hyperparameters for the grid search were as follows: 1) Maximum tree depth: 5, 10, 15, 25, 50; 2) Learning rate: 0.05, 0.1, 0.3; 3) Number of estimators: 25, 50, 100, 150; 4) Minimum child weight: 1, 5, 10; 5) Fraction of columns to be subsampled in each tree: 0.75, 1.0; 6) Subsample ratio of training instances: 0.75, 1.0. Default settings of the xgboost Python package were used for the rest of the hyperparameters.¹

In order to assess the effect of time of day (and the other variables included as features in the model) on glucose levels, the SHapley Additive exPlanations (SHAP) method was used.² SHAP is a method used in machine learning to explain how each feature contributes to the model's prediction. It assigns importance scores (SHAP values) to each feature for each single observation (which is in our study a glucose measurement) when considered in combination with all features in the model. The magnitude of the SHAP value thus represents the increase or decrease in the glucose level that can be attributed to the feature value.

Supplementary Methods S2: Formulas of linear mixed-effects models

Model 1	<code>glucose_level ~ 1 + (1 subjectID)</code>
Model 2	<code>glucose_level ~ diabetes + age + sex + (1 subjectID)</code>
Model 3	<code>glucose_level ~ diabetes + age + sex + carbohydrate_administration_rate + insulin_administration_rate + insulin_administration_rate + glucocorticoid_administration + (1 subjectID)</code>
Model 4	<code>glucose_level ~ diabetes + age + sex + carbohydrate_administration_rate + insulin_administration_rate + insulin_administration_rate + glucocorticoid_administration + time_of_day (1 subjectID)</code>

SUPPLEMENTARY TABLES

Supplementary Table S1: Carbohydrate content for each nutrition product present in the dataset.

Nutrition type	Carbohydrate content	Source
Beneprotein	0	https://www.nestlehealthscience.ca/en/brands/beneprotein/beneprotein-hcp
Boost Glucose Control	0.068	https://www.boost.com/products/glucose-control
Enlive	0.190	Fitzgerald et al. (2021) ⁴
Ensure	0.139	Fitzgerald et al. (2021) ⁴
Ensure Plus	0.203	Fitzgerald et al. (2021) ⁴
Fiber Supplement (i.e. Banana Flakes)	NOT FOUND	N/A
Fibersource HN	0.156	Fitzgerald et al. (2021) ⁴
Glucerna	0.11	Fitzgerald et al. (2021) ⁴
Impact	0.132	Fitzgerald et al. (2021) ⁴
Impact with Fiber	0.132	Fitzgerald et al. (2021) ⁴
Isosource 1.5	0.167	Fitzgerald et al. (2021) ⁴
Jevity 1.2	0.170	https://www.abbottnutrition.com/our-products/jevity-1_2-cal
Jevity 1.5	0.216	https://www.abbottnutrition.com/our-products/jevity-1_5-cal
Nepro	0.147	Fitzgerald et al. (2021) ⁴
NovaSource Renal	0.185	Fitzgerald et al. (2021) ⁴
Nutren 2.0	0.196	Fitzgerald et al. (2021) ⁴
Nutren Pulmonary	0.10	Fitzgerald et al. (2021) ⁴
Nutren Renal	0.185	Fitzgerald et al. (2021) ⁴
Osmolite 1.5	0.203	Fitzgerald et al. (2021) ⁴
Peptamen 1.5	0.188	Fitzgerald et al. (2021) ⁴
Peptamen Bariatric	0.078	Fitzgerald et al. (2021) ⁴
ProBalance	NOT FOUND	N/A
Promote	0.131	https://www.abbottnutrition.com/our-products/promote
Promote with Fiber	0.139	https://www.abbottnutrition.com/our-products/promote-with-fiber
Pulmocare	0.105	Fitzgerald et al. (2021) ⁴
Replete	0.112	Fitzgerald et al. (2021) ⁴
Replete with Fiber	0.124	Fitzgerald et al. (2021) ⁴
Two Cal HN	0.219	Fitzgerald et al. (2021) ⁴
Vital 1.5	0.186	https://www.abbottnutrition.com/our-products/vital-1_5-cal
Vital High Protein	0.113	https://www.abbottnutrition.com/our-products/vital-hp
Vivonex	0.003	Fitzgerald et al. (2021) ⁴

Supplementary Table S2: Overview of variables included in the linear mixed-effects models and XGBoost model.

	Linear mixed-effects model						XGBoost model	
	Variable type	Variable in model	Model 1	Model 2	Model 3	Model 4	Variable type	Variable in model
Glucose level	Continuous	Dependent variable	X	X	X	X	Continuous	Target variable
PatientID	Categorical	Random effect	X	X	X	X		
Intercept			X	X	X	X		
Patient level variables								
Age (years)	Categorical [≤55, 55<x≤65, 65<x≤75 >75]	Fixed effect		X	X	X	Continuous	Feature
Sex	Categorical [female / male]	Fixed effect		X	X	X	Categorical [female, male]	Feature
Diabetes diagnosis	Categorical [yes, no]	Fixed effect		X	X	X	Categorical [yes, no]	Feature
Sample level variables								
Carbohydrate administration rate (grams/hour)	Categorical [≤4.5, 4.5<x≤6.5, 6.5<x≤8.5 >8.5]	Fixed effect			X	X	Continuous	Feature
Insulin administration rate (units/hour)^a	Categorical [0, 0<x≤200, 200<x≤750, >750]	Fixed effect			X	X	Continuous	Feature
Dextrose administration rate (grams/hour)^a	Categorical [0, 0<x≤0.5, 0.5<x≤2, >2]	Fixed effect			X	X	Continuous	Feature
Glucocorticoid administration^a	Categorical [yes, no]	Fixed effect			X	X	Categorical [yes, no]	Feature
Time variable								
Time of day	Categorical [time bins 0 to 23]	Fixed effect				X	Continuous	Feature

^a The start and/or end time of administration of insulin, dextrose and glucocorticoids were corrected to account for their delaying and/or persisting effect on glucose levels (see Methods for details).

Supplementary Table S3: Characteristics of included glucose measuring (during enteral feeding episodes).

Glucose measurement characteristics	Included glucose measurements (n=207,647)
Glucose measurements per patient per day, median [IQR]	3 [2-5]
Glucose measurements taken during administration of:, n (%)	
Dextrose^a	89,581 (43%)
Insulin^a	70,066 (34%)
Glucocorticoids^a	40,314 (19%)
Sample type, n (%)	
Finger stick	129,133 (62%)
Lab (whole blood)	64,489 (31%)
Lab (serum)	14,025 (6.8%)

^a The start and/or end time of administration of insulin, dextrose and glucocorticoids were corrected to account for their delaying and/or persisting effect on glucose levels (see Methods for details).

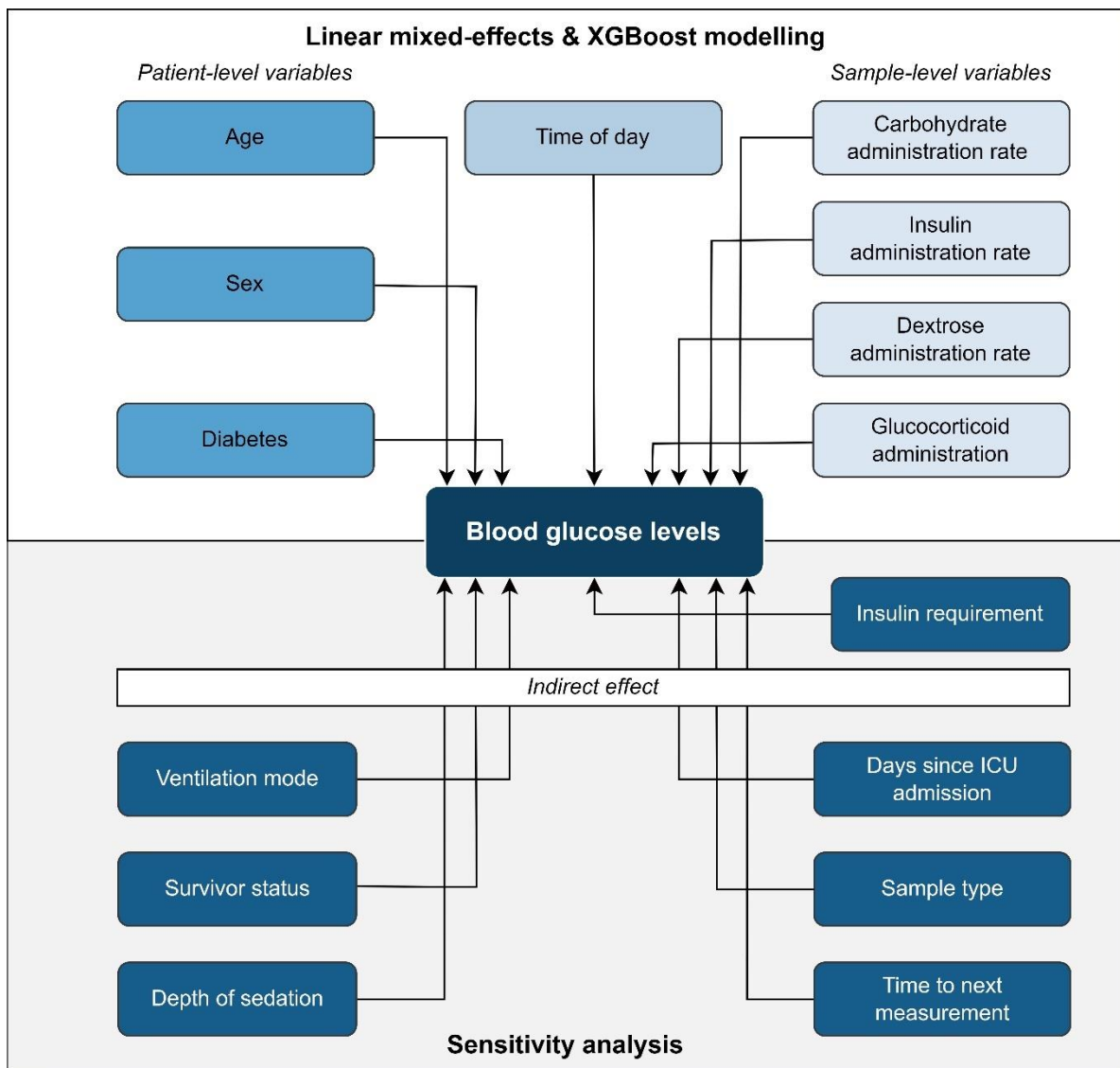
Supplementary Table S4: Results of log-likelihood ratio test to compare model fits.

	Number of variables	Log-Likelihood	Degrees of freedom	Chi-squared value	P-value
Model 1	3	-484169			
Model 2	8	-483164	Compared to model 1 5	2009.5	<0.0001
Model 3	18	-478487	Compared to model 2 10	9354.2	<0.0001
Model 4	41	-477232	Compared to model 3 23	2511.1	<0.0001

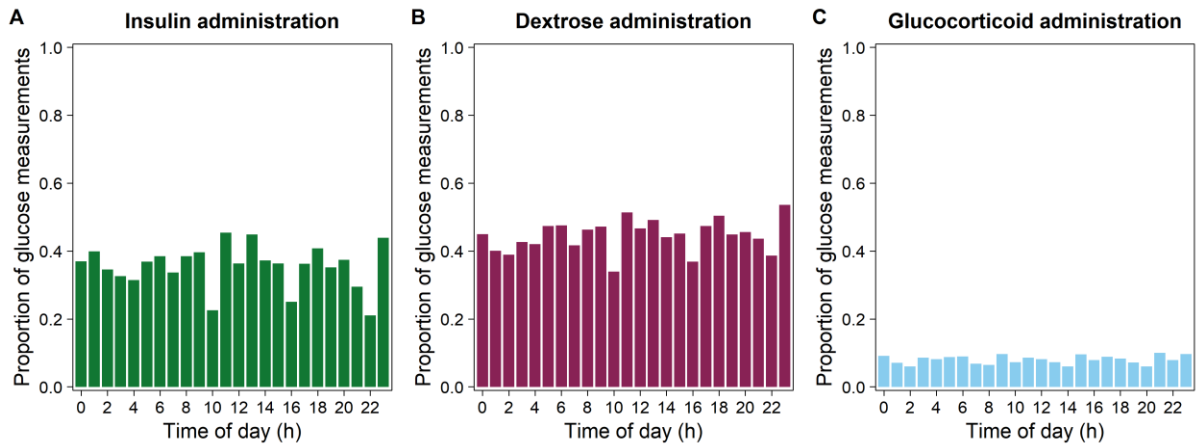
Supplementary Table S5: Number of glucose measurements and patients for each subgroup in sensitivity analysis.

Variable	Number of glucose measurements	Number of patients
Ventilation mode		
Non-Invasive	20,408	2,416
Invasive	78,715	4,587
Survivor status		
Non-survivors	59,523	1,967
Survivors	148,124	4,962
Sedation depth		
RASS \geq -1	96,191	5,191
RASS \leq -2	81,903	4,532
Day in the ICU		
Day 0-2	14,714	3,251
Day 3-7	80,839	6,276
Day \geq 8	112,094	3,718
Sample type		
Point-of-care test	129,133	6,199
Lab test	78,514	6,779
Time to next glucose measurement		
< 4 hours	91,845	5,689
4-8 hours	94,694	6,224
> 8 hours	18,108	4,621
Insulin requirement		
No insulin requirement	30,315	2,509
Mean daily insulin administration of insulin:		
0<x \leq 35 units	110,374	3,499
35<x \leq 70 units	24,692	460
>70 units	42,266	461

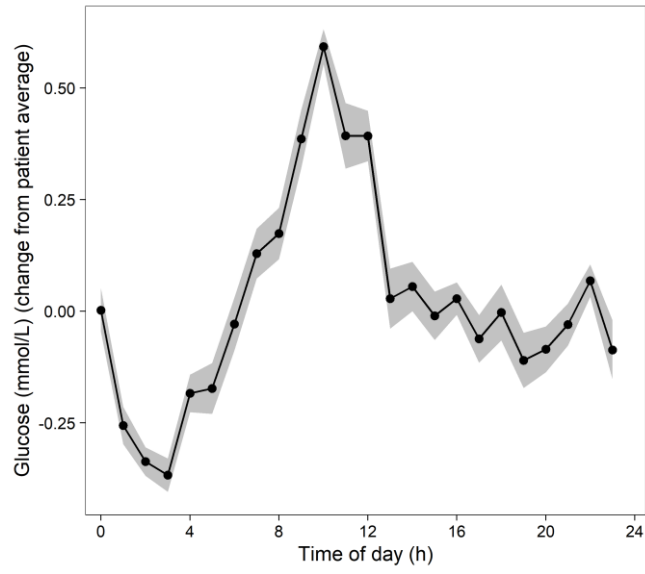
SUPPLEMENTARY FIGURES



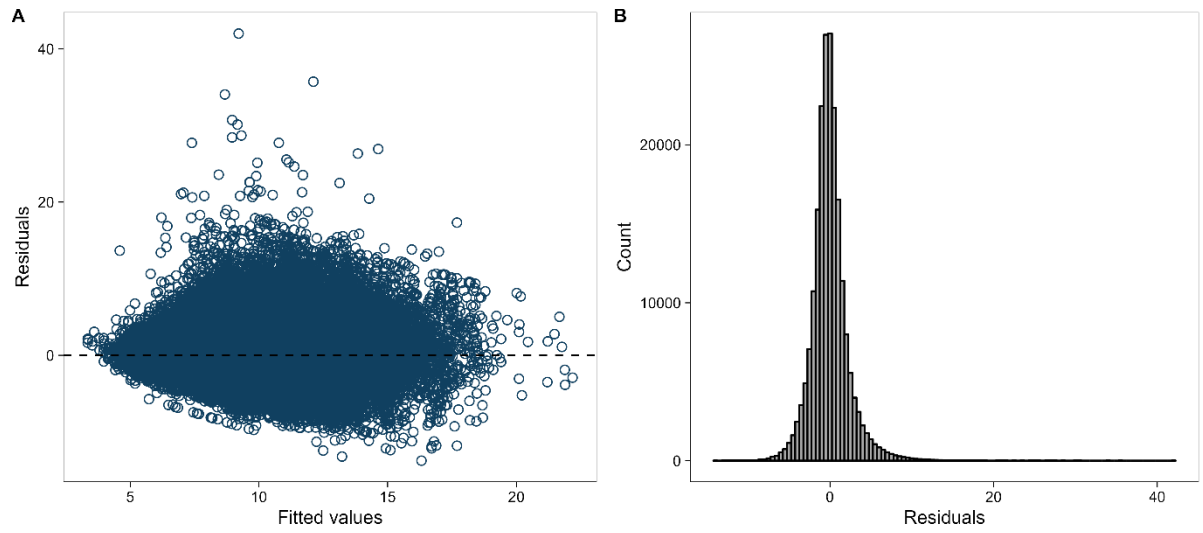
Supplementary Figure S1: Overview of variables included in the statistical analysis. Variables in the upper half of the figure are included in the linear mixed-effects models and XGBoost model. The variable groups (patient-level variables and sample-level variables) that are sequentially used in the various linear-mixed effects models (model 1-4) are represented in the figure. Variables in lower half of the figure are used to define the subgroups that are assessed in the sensitivity analyses.



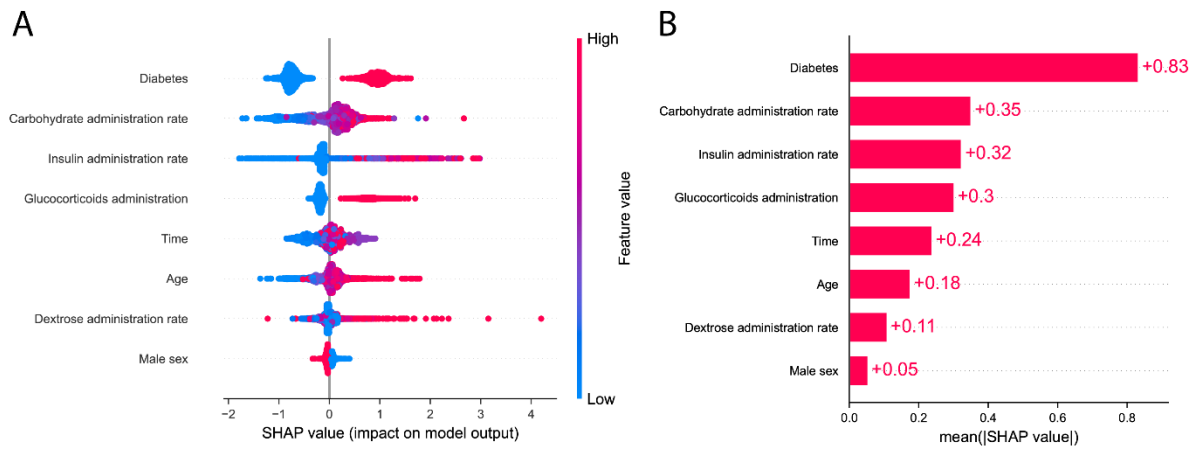
Supplementary Figure S2: Proportion of glucose measurements taken during administration of (A) insulin, (B) dextrose, and (C) glucocorticoids by time of day. The start and end time of administration of insulin and glucocorticoids (end times only) were corrected to account for the delaying and/or persisting effect of insulin and glucocorticoids on glucose levels (see Methods for details).



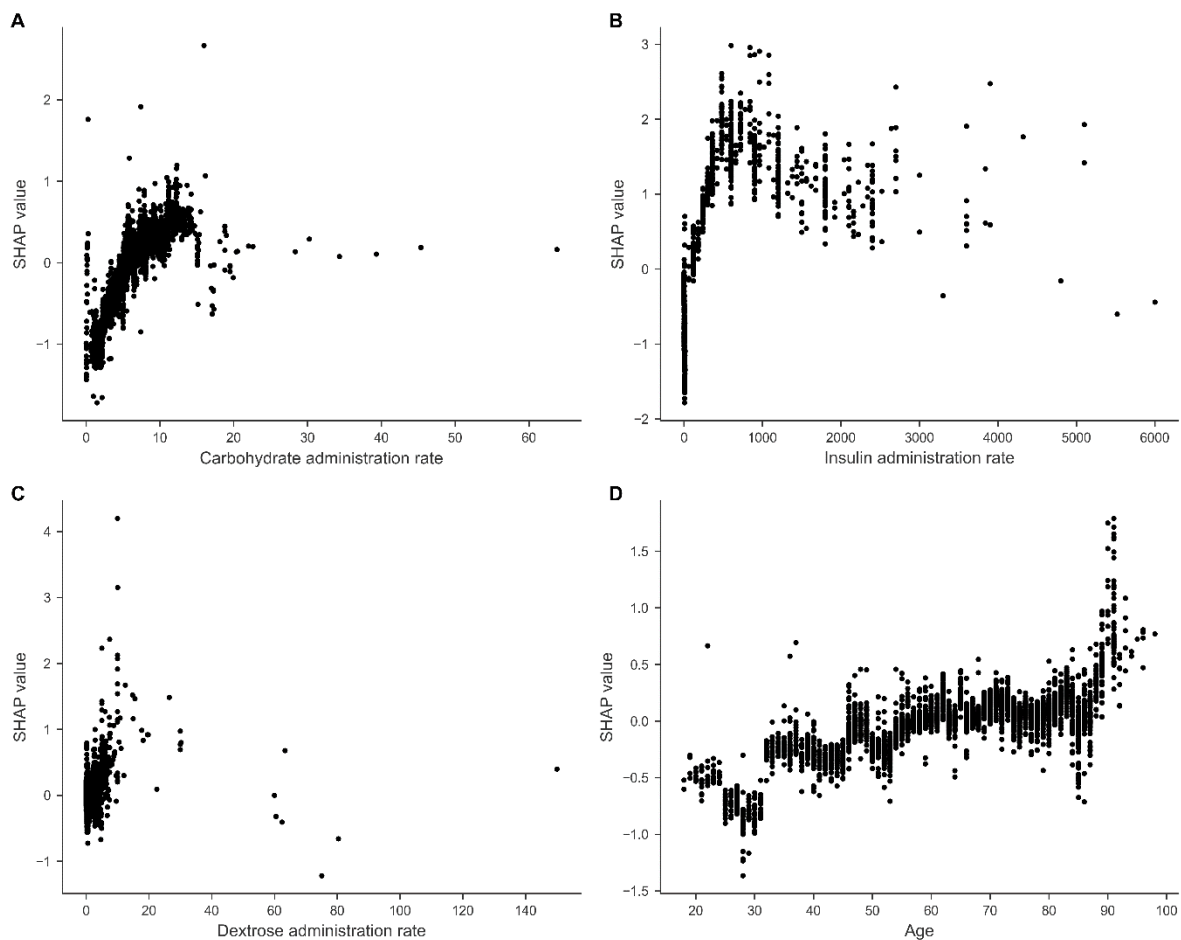
Supplementary Figure S3: Glucose levels over time, normalized per patient.



Supplementary Figure S4: Model diagnostic plots of final linear mixed-effects model. (A) Residuals versus fitted values. (B) Distribution of residuals.



Supplementary Figure S5: SHAP analysis of XGBoost regression model. (A) SHAP Summary plot. Each dot represents an individual glucose measurement and is colored according to the value of the feature. Red represents a higher feature value, blue represent a lower value. In categorical features, the red color indicates the presence of the corresponding variable, while blue represents the absence. The horizontal location of dot depicts whether it corresponds with a higher or lower prediction of the glucose levels (SHAP value). A sample of 5000 randomly selected features was used to in this SHAP analysis. (B) SHAP Global bar plots. For each feature, the global importance is indicated by taking the mean of absolute SHAP values (from panel A) for that feature over all selected samples.



Supplementary Figure S6: SHAP dependence plots of A) Carbohydrate administration rate, B) Insulin administration rate, C) Dextrose administration rate and D) Age. Each dot represents an individual glucose measurement, with its feature value at the x-axis and its SHAP value at the y-axis. A sample of 5000 randomly selected features was used to in this SHAP analysis. (B) SHAP Global bar plots.

REFERENCES

- 1 Chen T, Guestrin C. XGBoost: A Scalable Tree Boosting System. Proceedings of the 22nd ACM SIGKDD International Conference on Knowledge Discovery and Data Mining; San Francisco, California, USA: Association for Computing Machinery; 2016. p. 785–94.
- 2 Lundberg SM, Erion G, Chen H, DeGrave A, Prutkin JM, Nair B, et al. From local explanations to global understanding with explainable AI for trees. *Nature Machine Intelligence*. 2020;2(1):56-67.
- 3 Pedregosa F, Varoquaux G, Gramfort A, Michel V, Thirion B, Grisel O, et al. Scikit-learn: Machine Learning in Python. *J Mach Learn Res*. 2011;12:2825-30.
- 4 Fitzgerald O, Perez-Concha O, Gallego B, Saxena MK, Rudd L, Metke-Jimenez A, et al. Incorporating real-world evidence into the development of patient blood glucose prediction algorithms for the ICU. *Journal of the American Medical Informatics Association*. 2021;28(8):1642-50.