

1 **Bacterial Bloodstream Infections in Cameroon: A Systematic Review and Meta-Analysis of**
2 **Prevalence, and Antibiotic Resistance.**

3 Moise Matakone^{1*‡}, Patrice Landry Koudoum^{2‡}, Ravalona Jessica Zemtsa³, Sen Claudine Henriette
4 Ngomtcho^{2,4}, Isaac Dah^{1,5} and Michel Noubom^{2,7}

5 ¹National Veterinary Laboratory (LANAVET), Yaoundé, Cameroon;

6 ²Faculty of Medicine and Pharmaceutical Sciences, University of Dschang, Dschang P.O. Box 96,
7 Cameroon;

8 ³Department of Biochemistry, Faculty of Medicine and Biomedical Sciences, University of Yaoundé I,
9 Yaoundé, Cameroon;

10 ⁴National Public Health Laboratory, Yaoundé, Cameroon;

11 ⁵School of Veterinary Medicine and Science, University of Ngaoundéré, Ngaoundéré, Cameroon;

12 ⁶Annex Regional Hospital of Dschang (ARHD), Dschang, Cameroon

13 *Corresponding author: moisematakone19@gmail.com;

14 ‡ These authors contributed equally.

15

16

17

18

19

20

21

22

23

24

25

26

27

28

29

30

31

32

33 **Abstract**

34 **Background:** The paucity of data on the epidemiology of bloodstream infection (BSI) in Low-and
35 middle-income countries (LMICs) countries hampers its effective prevention and management. This
36 review sought to provide the current prevalence, bacteriological and antimicrobial resistance profiles of
37 bacteria implicated in BSI in Cameroon.

38 **Methods:** PubMed and Google Scholar databases were searched to identify relevant articles and
39 screened according to the PRISMA guidelines. Data was analysed using comprehensive meta-analysis
40 software. The I² was used to evaluate heterogeneity between studies, funnel plot and Egger's test to
41 evaluate publication bias and random-effects analysis models to calculate pooled prevalence.

42 **Results:** The 10 eligible studies were carried out in only two of the 10 regions of Cameroon and
43 investigated 4,223 participants, of whom 920 were children under two years old. The overall pooled
44 prevalence of bacterial BSI was 26.36% (95%CI= 17.51%–37.64%). *Klebsiella* spp. (28.20%; 95%CI=
45 2.80%–63.60%), *Escherichia coli* (18.94%; 95%CI= 13.02%–26.72%) and *Staphylococcus aureus*
46 (14.40%; 95%CI= 8.31%–23.81%) were the most incriminated bacteria species. *E. coli* and *Klebsiella*
47 spp. displayed the highest resistance to amoxicillin (82.6%; 95%CI= 63.3%–92.9 vs 86.4%; 95%CI=
48 55.9%–97.0%), amoxicillin + clavulanic acid (71.7%; 95%CI= 0.44%–89.2% vs 73.1%; 95%CI=
49 38.7%–92.1%) and trimethoprim/sulfamethoxazole (76.2%; 95%CI= 51.3%–90.7% vs 69.5%; 95%CI=
50 52.3–82.6%) respectively. However, meropenem (26.7%; 95%CI= 20.8%–33.7%) and fosfomycin
51 (14.9%; 95%CI= 9.1%–23.4%) were the least resistant in *E. coli* and *Klebsiella* spp. respectively.
52 *Staphylococcus aureus* showed high resistance to penicillin (84.4%; 95%CI= 68.1%–93.2%),
53 erythromycin (41.5%; 95%CI= 28.0%–56.5%) and oxacillin (37.4%; 95%CI= 8.8%–78.7%) and low
54 resistance to rifampicin (2.9%; 95%CI= 0.6%–13.4%), fusidic acid (8.1%; 95%CI= 3.4%–18.0%) and
55 vancomycin (13.6%; 95%CI= 2.2%–52.9%).

56 **Conclusion:** This study reports a high prevalence of bacterial BSIs in Cameroon and the high
57 resistance of these bacteria to common antibiotics. There is a pressing need to conduct BSI surveillance
58 studies in all regions of Cameroon to generate data for evidence-based measures regarding BSI
59 prevention and management.

60 **Keywords:** Bloodstream infection, epidemiology, *Enterobacterales*, antibiotic resistance, Cameroon.

61
62
63
64
65
66
67

68 **Introduction**

69 Bloodstream infection (BSI) is characterised by positive blood cultures in patients with systemic
70 symptoms and signs of infection [1]. BSI can eventually lead to sepsis which is a complication
71 characterised by a life-threatening organ dysfunction caused by a dysregulated host response to
72 infection [1]. Sepsis and BSI are significantly associated with morbidity and mortality worldwide and
73 represent a huge public health concern [2]. According to the World Health Organization (WHO), sepsis
74 accounted for around 20% of all global deaths in 2017, affected 49 million people, and resulted in 11
75 million fatalities [2, 3]. Vulnerable populations such as pregnant women, elderly persons, patients with
76 severe comorbidities, newborns, and those in low-resource settings are disproportionately affected [4,
77 5]. Cases of sepsis and sepsis-related deaths in low-and middle-income countries (LMICs) account for
78 85% of the global sepsis incidence [3] and hospital mortality due to sepsis is estimated at 19% for
79 moderate sepsis and 39% for severe sepsis in sub-Saharan Africa (SSA) [6]. Bacteria, especially
80 *Enterobacteriales* including *Escherichia coli*, *Klebsiella* spp., *Salmonella enterica* and Gram-positive
81 cocci such as *Staphylococcus aureus* and coagulase-negative *Staphylococcus* are all major species
82 implicated in BSI and sepsis [7, 8].

83 Inappropriate use of antibiotics is known to exacerbate the burden of Antimicrobial Resistance (AMR)
84 in bacterial pathogens [9]. Globally, there is an increase in drug resistance to front-line antibiotics
85 including β -lactams, fluoroquinolones, aminoglycosides, and macrolides [10, 11]. Therefore, AMR is a
86 major public health concern and is expected to be the leading cause of mortality by 2050 with 10 million
87 deaths per year if no immediate measures are taken [12]. AMR is a serious challenge in hospital settings
88 as it worsens the effects of bacterial infections in general especially sepsis, from extended hospital
89 stays to increased mortality [13, 14].

90 In Cameroon, the bacterial BSI and sepsis and the AMR rate of implicated bacteria are still poorly
91 documented. Notwithstanding, some studies have been published, it would be important to summarise
92 these already available data to inform on context-specific epidemiology of BSI in terms of aetiology,
93 AMR rate and to direct future BSI and sepsis prevention and management efforts in Cameroon. Thus,
94 in this review, we estimate the pooled proportion of culture-confirmed bacterial BSIs and their AMR
95 rates in Cameroon.

96 **Methods**

97 We conducted this systematic review and meta-analysis following the Preferred Reporting Items for
98 Systematic Review and Meta-Analysis statement (PRISMA) 2020 guidelines [15] and, the protocol was
99 registered in the Prospero database (Ref: CRD42023482760, available
100 from: https://www.crd.york.ac.uk/prospero/display_record.php?ID=CRD42023482760).

101 **Search strategy**

102 The National Library of Medicine database (MEDLINE) was searched through PubMed, along with
103 Google Scholar and hand search. These databases were searched to find all articles reporting the
104 prevalence of culture-confirmed bacteria-driven bloodstream infections. Library research was

105 performed using Medical Subject Headings (MeSH) and keywords paired with Boolean operators (**Fig.**
106 **1**).

107 **Eligibility criteria**

108 Three authors independently searched the literature and evaluated the titles and abstracts of papers.
109 Articles included were studies which (1) reported culture-confirmed bacteria-driven bloodstream
110 infections in Cameroon, (2) published in peer-reviewed journals and (3) published in English or French
111 from 2010 up to December 2023. Articles were excluded if (1) the full texts were not assessable and
112 (2) they were case reports or case series.

113 **Study selection**

114 After the literature search, we uploaded all articles to an EndNote (version 20.6) database and
115 duplicates were removed. Two reviewers did the screening of titles and abstracts to assess whether
116 specific inclusion criteria were met and non-relevant citations and those that did not meet inclusion
117 criteria were excluded. Disagreements on whether or not an article should be included or not were
118 resolved by a third reviewer.

119 **Data extraction**

120 Two authors used a Microsoft Excel spreadsheet (2016 version) to extract data from included articles
121 independently. The first author, publication year, region of study, study design, sample size, age of
122 study population, the prevalence of BSIs, the proportion of each bacteria causing BSIs and AMR rates
123 of bacteria groups were extracted. Inconsistencies were resolved through a group consensus.

124 **Quality assessment**

125 Quality of included studies was done using the Joanna Briggs Institute revised Critical Appraisal
126 Checklist [16]. The checklist was applied to each study to assess the eight items with each item awarded
127 a point for “yes” and the final score for each article added and fell between zero and eight. Any
128 disagreement among authors was resolved by consensus. A study was considered low-risk when it
129 scored ≥ 4 points.

130 **Data analysis**

131 We exported the extracted data to Comprehensive Meta-Analysis Software (version 3.0) for analysis.
132 Begg and Egger’s regression tests were used to objectively assess publication bias while the funnel
133 plot was used to visualise this bias [17]. A p -value < 0.05 was considered statistically significant [18].
134 Cochran Q statistics assessed the presence and magnitude of heterogeneity between studies.
135 Quantification of heterogeneity was done using I^2 expressed in percentages. Values of 75, 50 and 25%
136 were considered as high, medium and low heterogeneity [19] respectively. Subgroup meta-analysis
137 was conducted according to participant's ages into all ages and paediatric (children under 2 years).

138

139

140 **Results**

141 **Results of the literature search**

142 The online database search from PubMed and Google Scholar yielded 329 articles and two articles
143 through the hand search. The duplicates were removed and 314 articles were enrolled for the title and
144 abstract screening. Finally, 25 articles were screened for full-text review and 10 which responded to the
145 study objectives were included (**Fig. 2**).

146 **Publication bias**

147 When BSI among study participants was analysed, a visual inspection of the funnel plot showed that
148 there was no evidence of publication bias among the included studies. Similarly, the coefficient (4.89,
149 95% CI= -5.23, 15.01) for Egger's regression test was not statistically significant (*p-value* = 0.298).

150 **Characteristics of included studies**

151 The 10 included studies described a total of 4223 blood cultures, of which 920 (21.79%) were performed
152 exclusively in the paediatric population (children under 2 years). The studies were conducted in two of
153 the 10 regions of Cameroon and included patients from only two cities Douala (n=2547; 60.31%) [20-
154 22] and Yaoundé (n=1676; 39.69%) [23-29]. Most of the studies were cross-sectional (n=08) [20, 22-
155 26, 28, 29], one longitudinal [27] and one retrospective [21] study but all were of low-risk quality. Only
156 the cross-sectional studies reported the age of the patients which ranged from 0 to 92 years (**Table 1**).

157 **Pooled prevalence and bacterial aetiology of bloodstream infections**

158 The heterogeneity among the included studies was statistically significant ($I^2= 97,63\%$; $p=0.000$). Thus,
159 we used Random Effect Models to calculate the pooled prevalence of culture-confirmed bacteria-driven
160 bloodstream infections in Cameroon and their 95% confidence intervals were represented on forest
161 plots. Blood culture was performed in 4223 patients and 888 were positive for a bacterial BSI. The
162 bacterial BSI prevalence in this study ranged from 11.93% up to 67.89% and the overall pooled
163 prevalence was 26.36% (95%CI= 17.51%–37.64%). Additionally, the prevalence in children and all age
164 subgroups was similar (26.54% and 26.22% respectively) (**Fig. 3**).

165 The main bacterial groups reported in this study were *Enterobacteriales*, *Staphylococci* and
166 *Streptococci*. Among the *Enterobacteriales* group, *Klebsiella* spp. (28.20%; 95%CI= 2.80%–63.60%),
167 was the most implicated followed by *Escherichia coli* (18.94%; 95%CI= 13.02%–26.72%), *Enterobacter*
168 spp. (7.66%; 95%CI= 4.46%–12.83%) and *Salmonella enterica* (7.01%; 95%CI= 3.62%–13.15%)
169 (**Fig.4**). Seven studies reported gram-positive cocci, of which *Staphylococcus aureus* was the most
170 implicated (14.40%; 95%CI= 8.31%–23.81%), followed by *Coagulase-negative Staphylococcus*
171 (8.23%; 95%CI= 2.68%–22.65%) (**Fig. 5**) and *Streptococcus* spp. (4.07%; 95%CI= 2.64%–6.21%) as
172 presented in **Fig. 6**. Non-fermenting gram-negative bacilli were also recorded in both age groups and
173 *Acinetobacter* spp. (3.93%; 95%CI=2.13%–7.29%) was the commonly reported followed by
174 *Pseudomonas* spp. (3.17%; 95%CI= 1.96%–5.07%) (**Fig. 7**).

175

176 **Antimicrobial resistance rates of bacterial BSI**

177 This study reported only the pooled AMR rate of the most represented bacteria in each group. Most of
178 the included studies failed to report the AST of several antibiotics. Overall, both *E. coli* and *Klebsiella*
179 spp. were highly resistant to amoxicillin 82.6% (95%CI= 63.3%–92.9%) vs 86.4% (95%CI=
180 55.9%–97.0%), amoxicillin + clavulanic acid 71.7% (95%CI= 0.44%–89.2%) vs 73.1% (95%CI=
181 38.7%–92.1%) and trimethoprim/sulfamethoxazole 76.2% (95%CI= 51.3%–90.7%) vs 69.5% (95%CI=
182 52.3%–82.6%) respectively. Additionally, resistance to third and fourth-generation cephalosporins and
183 monobactam was high among *E. coli*: cefotaxime 46.5% (95%CI= 26.8%–67.3%), ceftazidime 49.9%
184 (95%CI= 29.5%–70.3%), cefepime 51.5% (95%CI= 10.9%–62.0%), aztreonam 49.9% (95%CI= 40.6%-
185 59.3%) and *Klebsiella* spp.: cefotaxime 30.4% (95%CI= 9.8%–63.6%), ceftazidime 45.4% (95%CI=
186 16.8%–77.1%) and aztreonam 54.2% (95%CI= 34.2%–73.0%). However, meropenem 26.7% (95%CI=
187 20.8–33.7%) and fosfomycin 14.9% (95%CI= 9.1%–23.4%) were the most effective in *E. coli* and
188 *Klebsiella* spp. respectively (**Table 2**). *Staphylococcus aureus* showed high resistance to penicillin
189 84.4% (95%CI= 68.1%–93.2%), erythromycin 41.5% (95%CI= 28.0%–56.5%) and oxacillin 37.4%
190 (95%CI= 8.8%–78.7%). However, a low resistance rate of *Staphylococcus aureus* was recorded in
191 non- β -lactams antibiotics including rifampicin 2.9% (95%CI= 0.6%–13.4%), fusidic acid 8.1% (95%CI=
192 3.4%–18.0%) and vancomycin 13.6% (95%CI= 2.2%–52.9%) and cefoxitin 18.9% (95%CI=
193 12.0%–82.1%) was the most effective β -lactams. In the CONS group, a high resistance rate was
194 registered against penicillin 89.9% (95%CI= 66.0%–97.6%), trimethoprim/sulfamethoxazole 52.9%
195 (95%CI= 42.1%–63.5%) and oxacillin 50.7% (95%CI= 25.0%–76.1%) while cefoxitin 14.9% (95%CI=
196 11%–73.6%) and fusidic acid 25.5% (95%CI= 17.4%–35.6%) were the most effective (**Table 3**).

197 **Discussion**

198 This review aimed to determine the pooled prevalence of bacterial BSIs and the AMR rates of implicated
199 bacteria in Cameroon. The 10 studies selected for this review described 4223 blood cultures and the
200 overall pooled prevalence of BSI in was 26.36%. This prevalence is higher than those reported in Africa
201 by Reddy *et al* (2010) and in Africa and Asia by Marchello *et al* (2019) which were 7.4% and 10.8%
202 respectively [30, 31]. However, studies conducted in Ethiopia by Bitew *et al* (2023), Legese *et al* (2022)
203 and Abebe *et al* (2021) documented a similar prevalence of BSI [32-34]. This review also recorded a
204 high prevalence of 26.54% of BSI in children under 2 years old. A similar pooled prevalence of neonatal
205 sepsis in East Africa was documented by Abate *et al* (2020) [35] while Belachew and Tewabe (2020)
206 recorded a pooled prevalence of neonatal sepsis in Ethiopia of 49.98% [36]. The observed difference
207 and the high prevalence either in children and all age groups in this review may be due to the small
208 sample size of many included studies [20, 22, 27, 28], the study design as well as the study periods.
209 The study revealed that *Enterobacteriales* including *Klebsiella* spp. (28.20%) and *Escherichia coli*
210 (18.94%) were the leading bacteria implicated in the BSI. Studies conducted in several low and middle-
211 income countries have demonstrated the high implication of these bacteria in bloodstream infections
212 and sepsis especially in hospital settings [10, 34, 37]. However, these results were contradictory to
213 those recorded by Wattal *et al* (2020) and Reddy *et al* (2010) where *Salmonella* spp. was the leading

214 cause of BSI and sepsis [11, 30]. This contradiction might be due to the bacterial identification methods
215 used poorly described in some studies which can considerably vary depending on the laboratory [20,
216 21, 27].

217 The most frequent *Enterobacterales* reported in this review showed a high resistance to β -lactam
218 antibiotics especially third and fourth-generation cephalosporins and monobactam. This might indicate
219 the production of β -lactamases particularly the extended-spectrum β -lactamase enzymes by most of
220 these bacteria even though most of the included studies failed to report the resistance phenotypes.

221 **Limitations**

222 The statements and conclusions in this review cannot be generalised to Cameroon as the included
223 studies investigated only two regions and were conducted in a small sample size. Also, the study was
224 unable to precise whether the BSI was community or hospital-acquired. Finally, the study failed to report
225 AMR among several bacteria and the resistance phenotypes of implicated bacteria.

226 **Conclusion**

227 The prevalence of bacterial bloodstream infection in this study is elevated in both paediatric and adult
228 populations. *Enterobacterales* including *Klebsiella* spp. and *Escherichia coli* and Gram-positive cocci
229 particularly *Staphylococcus aureus* remain the leading causes of bloodstream infection. Antibiotic
230 resistance was higher to β -lactam in both *Enterobacterales* and Gram-positive cocci. This study may
231 help clinicians optimise their antibiotic prescription protocol in the early management of bacterial
232 bloodstream infection in the absence of antibiotic susceptibility testing results. The review also calls for
233 researchers to make more effort to produce AMR data to permit policymakers and stakeholders a better
234 bloodstream infection management and prevention in Cameroon.

235 **Conflict of interest**

236 The authors declare no conflict of interest

237 **Authors contributions**

238 MM conceived and designed the study. MM and PLK coordinated the literature search. PKL, RJZ and
239 MM undertook data extraction, quality assessment and statistical analysis. MM, PLK, and RJZ prepared
240 the first draft of the manuscript. ID, SCHN and MN critically reviewed the manuscript. All authors read
241 and approved the final version of the manuscript.

242 **Funding**

243 The study was not funded.

244 **References**

245 [1]. Singer M, Deutschman CS, Seymour CW, Shankar-Hari M, Annane D, Bauer M, *et al.* The
246 Third International Consensus Definitions for Sepsis and Septic Shock (Sepsis-3). *Jama.*
247 2016;315(8):801-10.

- 248 [2]. WHO. Global report on the epidemiology and burden of sepsis: Current evidence, identifying
249 gaps and future directions. 2020.
- 250 [3]. Rudd KE, Johnson SC, Agesa KM, Shackelford KA, Tsoi D, Kievlan DR, *et al.* Global, regional,
251 and national sepsis incidence and mortality, 1990-2017: analysis for the Global Burden of Disease
252 Study. *Lancet*. 2020;395(10219):200-11.
- 253 [4]. Cheng AC, West TE, Limmathurotsakul D, Peacock SJ. Strategies to reduce mortality from
254 bacterial sepsis in adults in developing countries. *PLoS Med*. 2008;5(8):e175.
- 255 [5]. Rhee C, Jones TM, Hamad Y, Pande A, Varon J, O'Brien C, *et al.* Prevalence, Underlying
256 Causes, and Preventability of Sepsis-Associated Mortality in US Acute Care Hospitals. *JAMA Netw*
257 *Open*. 2019;2(2):e187571.
- 258 [6]. Lewis JM, Feasey NA, Rylance J. Aetiology and outcomes of sepsis in adults in sub-Saharan
259 Africa: a systematic review and meta-analysis. *Critical Care*. 2019;23(1):212.
- 260 [7]. Timsit JF, Ruppé E, Barbier F, Tabah A, Bassetti M. Bloodstream infections in critically ill
261 patients: an expert statement. *Intensive Care Med*. 2020;46(2):266-84.
- 262 [8]. Mun SJ, Kim S-H, Kim H-T, Moon C, Wi YM. The epidemiology of bloodstream infection
263 contributing to mortality: the difference between community-acquired, healthcare-associated, and
264 hospital-acquired infections. *BMC Infectious Diseases*. 2022;22(1).
- 265 [9]. Blair JM, Webber MA, Baylay AJ, Ogbolu DO, Piddock LJ. Molecular mechanisms of antibiotic
266 resistance. *Nat Rev Microbiol*. 2015;13(1):42-51.
- 267 [10]. Ombelet S, Kpossou G, Kotchare C, Agbobli E, Sogbo F, Massou F, *et al.* Blood culture
268 surveillance in a secondary care hospital in Benin: epidemiology of bloodstream infection pathogens
269 and antimicrobial resistance. *BMC Infect Dis*. 2022;22(1):119.
- 270 [11]. Wattal C, Goel N. Pediatric Blood Cultures and Antibiotic Resistance: An Overview. *Indian J*
271 *Pediatr*. 2020;87(2):125-31.
- 272 [12]. O'Neill J. Tackling drug-resistance infections globally: final report and recommendations, 2016.
273 Available: https://amr-review.org/sites/default/files/160518_Final%20paper_with%20cover.pdf
274 [Accessed on 1 Jul 2023] 2016 [
- 275 [13]. Chaurasia S, Sivanandan S, Agarwal R, Ellis S, Sharland M, Sankar MJ. Neonatal sepsis in
276 South Asia: huge burden and spiralling antimicrobial resistance. *Bmj*. 2019;364:k5314.
- 277 [14]. Murray CJL, Ikuta KS, Sharara F, Swetschinski L, Robles Aguilar G, Gray A, *et al.* Global
278 burden of bacterial antimicrobial resistance in 2019: a systematic analysis. *The Lancet*.
279 2022;399(10325):629-55.
- 280 [15]. Page MJ, McKenzie JE, Bossuyt PM, Boutron I, Hoffmann TC, Mulrow CD, *et al.* The PRISMA
281 2020 statement: An updated guideline for reporting systematic reviews. *PLoS Med*.
282 2021;18(3):e1003583.
- 283 [16]. Joanna Briggs Institute. Critical-Appraisal-Tools—Critical Appraisal Tools | JBI. 2022. Available
284 online: <https://jbi.global/critical-appraisal-tools> (accessed on 07 November 2023).
- 285 [17]. Egger M, Davey Smith G, Schneider M, Minder C. Bias in meta-analysis detected by a simple,
286 graphical test. *Bmj*. 1997;315(7109):629-34.

- 287 [18]. Fletcher J. What is heterogeneity and is it important? *Bmj*. 2007;334(7584):94-6.
- 288 [19]. Higgins JP, Thompson SG, Deeks JJ, Altman DG. Measuring inconsistency in meta-analyses.
289 *Bmj*. 2003;327(7414):557-60.
- 290 [20]. Kemeze S, Moudze B, Chiabi A, Eposse C, Kaya A, Mbangue M, *et al*. Profil clinique et
291 bactériologique des infections néonatales bactériennes à l'Hôpital Laquintinie de Douala, Cameroun.
292 *The Pan African Medical Journal*. 2016;23.
- 293 [21]. Okalla Ebongue C, Mefo'o JP, Te N, Moukoko E, Adiogo D, Beyiha G. Profil Bactériologique et
294 sensibilité aux antibiotiques des isolats d'hémoculture (2006 – 2011) à Douala, Cameroun. *Revue*
295 *Maliennne d'Infectiologie et de Microbiologie*. 2014;2.
- 296 [22]. Teghonong J, Okalla Ebongue C, Yadufashije C, Kojom LP, Adiogo D. Phenotypic
297 Characteristics of *Klebsiella pneumoniae* Extended Spectrum β -Lactamases Producers Isolated in
298 Hospitals in the Littoral Region, Cameroon. *European Journal of Clinical Microbiology*. 2020;6:9-13.
- 299 [23]. Carole Suzie Lacmago Titsamp HKG, Simon Ngamli Fewou. Bloodstream infections initiated
300 by ESBL-producing *Escherichia coli* in neonates and infants at two hospitals in Yaoundé, Cameroon.
301 *International Journal of Biological and Chemical Sciences*. 2021;15(3).
- 302 [24]. Chiabi A, Djoupomb M, Mah E, Nguetack S, Mbuagbaw L, Zafack J, *et al*. The clinical and
303 bacteriological spectrum of neonatal sepsis in a tertiary hospital in yaounde, cameroon. *Iran J Pediatr*.
304 2011;21(4):441-8.
- 305 [25]. Djuikoue CI, Djouela Djoulako PD, Wouambo RK, Lacmago ST, Dayomo A, Kamga HG, *et al*.
306 Prevalence of *Escherichia coli* Producing Extended Spectrum Beta-Lactamase (ESBL) Driven
307 Septicaemia in Children Aged 0–2 Years in Two Districts Hospitals in Yaounde, Cameroon. *Bacteria*.
308 2022;1(4):294-301.
- 309 [26]. Kamga H, Njunda A, Nde P, Assob J, Nsagha D, Weledji P. Prevalence of septicaemia and
310 antibiotic sensitivity pattern of bacterial isolates at the University Teaching Hospital, Yaoundé,
311 Cameroon. *African Journal of Clinical and Experimental Microbiology*. 2011;12(1).
- 312 [27]. Nouetchognou JS, Ateudjieu J, Jemea B, Mesumbe EN, Mbanya D. Surveillance of nosocomial
313 infections in the Yaounde University Teaching Hospital, Cameroon. *BMC Res Notes*. 2016;9(1):505.
- 314 [28]. Yimtchi LCN, Pokam BDT, Baiye AW, Betbeui AC, Gonsu HK, Djakissam W. Antibiotic
315 Susceptibility Patterns of Bacteria Associated with Sepsis among Hospitalized Patients in the Yaoundé
316 University Teaching Hospital—Cameroon. *Open Journal of Medical Microbiology*. 2023;13(1):101-15.
- 317 [29]. Zefack JT, Ambe NF, Bobga TP, Ketum AS, Awambeng DN, Kelly CN, *et al*. Bacteriological
318 Profile and Antimicrobial Sensitivity Pattern of Blood Culture Isolates among Septicemia Suspected
319 Patients in the University Teaching Hospital (UTH) Yaoundé, Cameroon. *International Journal of Trend*
320 *in Scientific Research and Development*. 2020;4(5).
- 321 [30]. Reddy EA, Shaw AV, Crump JA. Community-acquired bloodstream infections in Africa: a
322 systematic review and meta-analysis. *The Lancet infectious diseases*. 2010;10(6):417-32.
- 323 [31]. Marchello CS, Dale AP, Pisharody S, Rubach MP, Crump JA. A Systematic Review and Meta-
324 analysis of the Prevalence of Community-Onset Bloodstream Infections among Hospitalized Patients
325 in Africa and Asia. *Antimicrob Agents Chemother*. 2019;64(1).

- 326 [32]. Bitew A, Adane A, Abdeta A. Bacteriological spectrum, extended-spectrum β -lactamase
327 production and antimicrobial resistance pattern among patients with bloodstream infection in Addis
328 Ababa. *Scientific Reports*. 2023;13(1).
- 329 [33]. Abebe W, Tegene B, Feleke T, Sharew B. Bacterial Bloodstream Infections and their
330 Antimicrobial Susceptibility Patterns in Children and Adults in Ethiopia: a 6-Year Retrospective Study.
331 *Clin Lab*. 2021;67(11).
- 332 [34]. Legese MH, Asrat D, Swedberg G, Hasan B, Mekasha A, Getahun T, *et al*. Sepsis: emerging
333 pathogens and antimicrobial resistance in Ethiopian referral hospitals. *Antimicrobial Resistance &*
334 *Infection Control*. 2022;11(1):83.
- 335 [35]. Abate BB, Kasie AM, Reta MA, Kassaw MW. Neonatal sepsis and its associated factors in East
336 Africa: a systematic review and meta-analysis. *International Journal of Public Health*. 2020;65(9):1623-
337 33.
- 338 [36]. Belachew A, Tewabe T. Neonatal sepsis and its association with birth weight and gestational
339 age among admitted neonates in Ethiopia: systematic review and meta-analysis. *BMC Pediatrics*.
340 2020;20(1).
- 341 [37]. Solomon S, Akeju O, Odumade OA, Ambachew R, Gebreyohannes Z, Van Wickle K, *et al*.
342 Prevalence and risk factors for antimicrobial resistance among newborns with gram-negative sepsis.
343 *PLOS ONE*. 2021;16(8):e0255410.

(antimicrobial OR antibacterial OR antibiotics OR antibiotiques OR antimicrobial resistance OR antibiotic resistance OR multiresistance OR multidrug resistance) OR (bacteria OR bactéries OR *Enterobacterales* OR *Enterobacteriaceae* OR entérobactéries OR *Escherichia coli* OR *E. coli* OR *Klebsiella* OR *Staphylococcus* OR *Salmonella* OR Typhoid OR *Enterobacter* OR *Pseudomonas* OR *Acinetobacter* OR *Streptococcus* OR coagulase negative OR gram negative OR gram positive) AND (bloodstream infections OR hémoculture OR hemoculture OR sepsis OR septicemia OR septicaemia OR septicémie OR neonatal sepsis) AND (Cameroon OR Cameroun).

Fig. 1: Search terms used to identify relevant literature from PubMed and Google Scholar

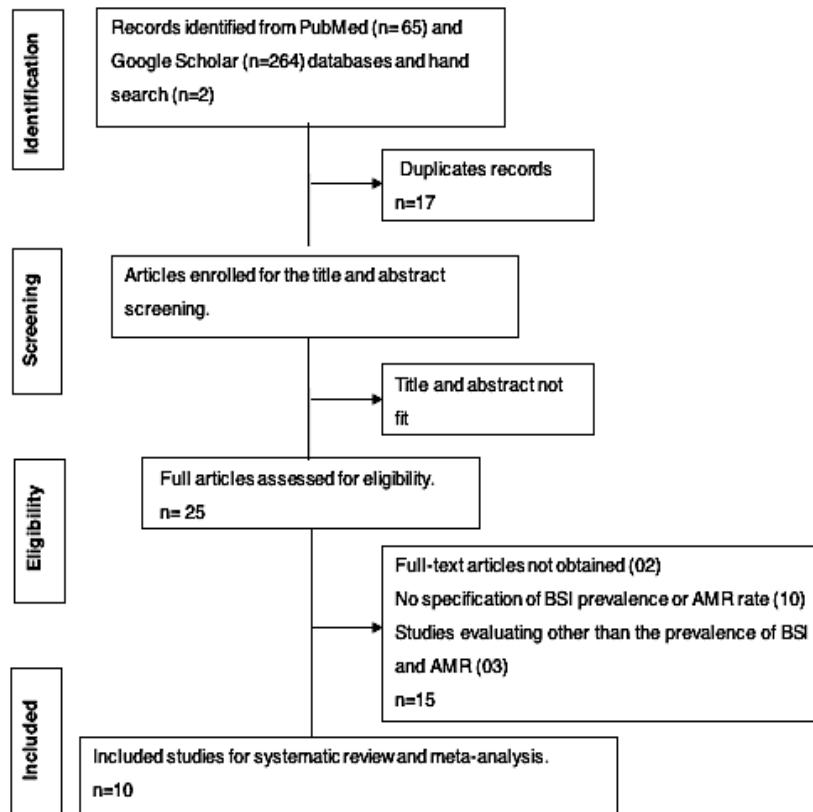


Fig. 2: PRISMA flow chart of the study selection process

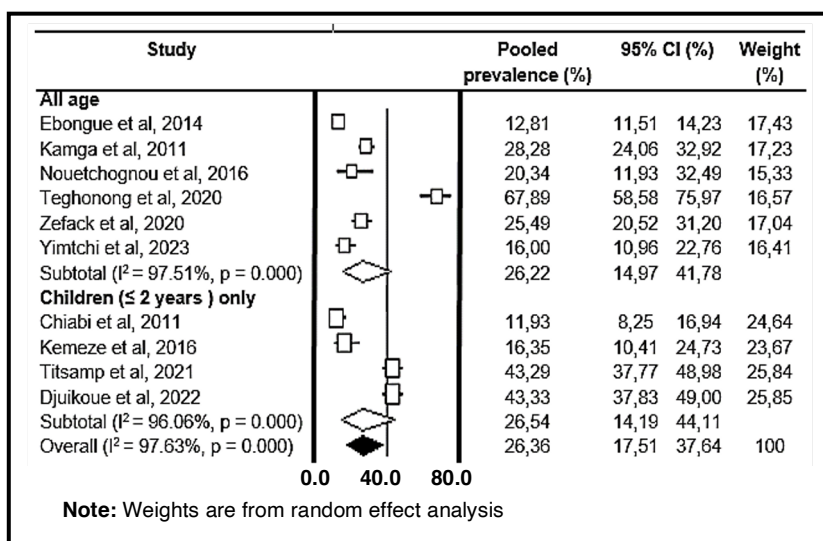


Fig. 3: Forest plot of pooled prevalence of culture-confirmed bacterial bloodstream infections in Cameroon

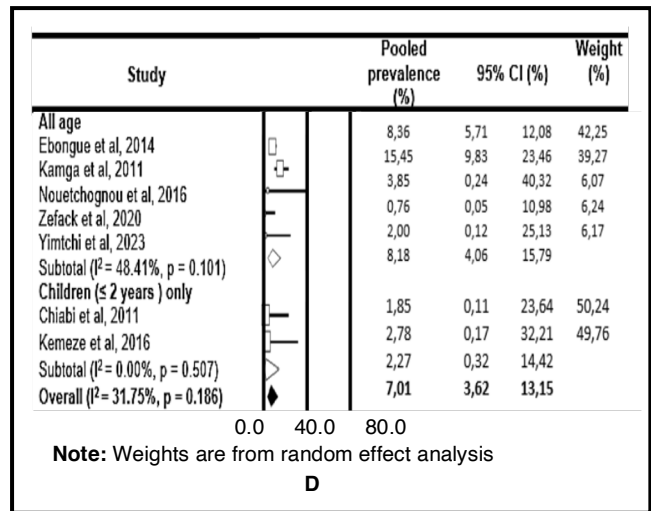
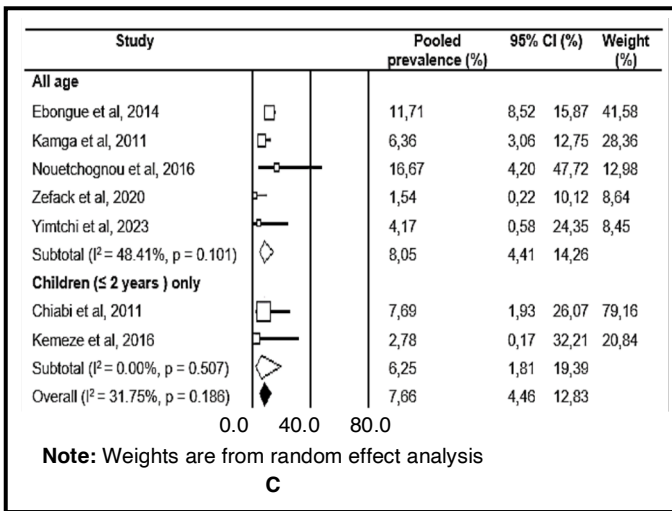
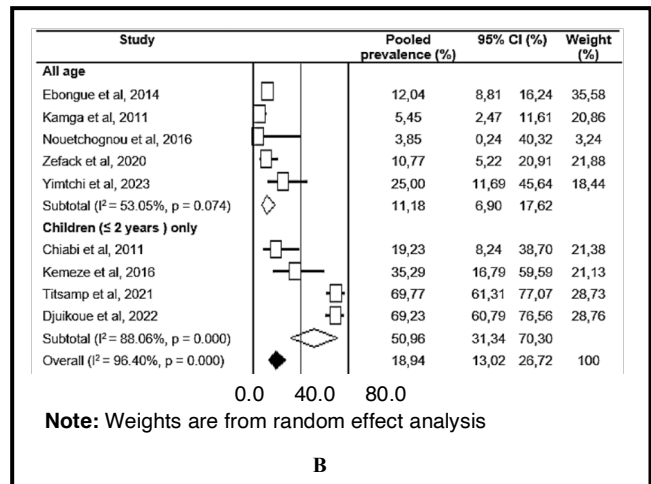
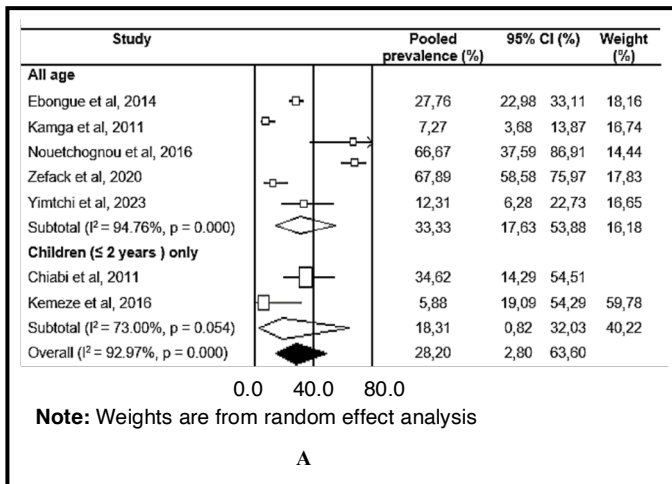
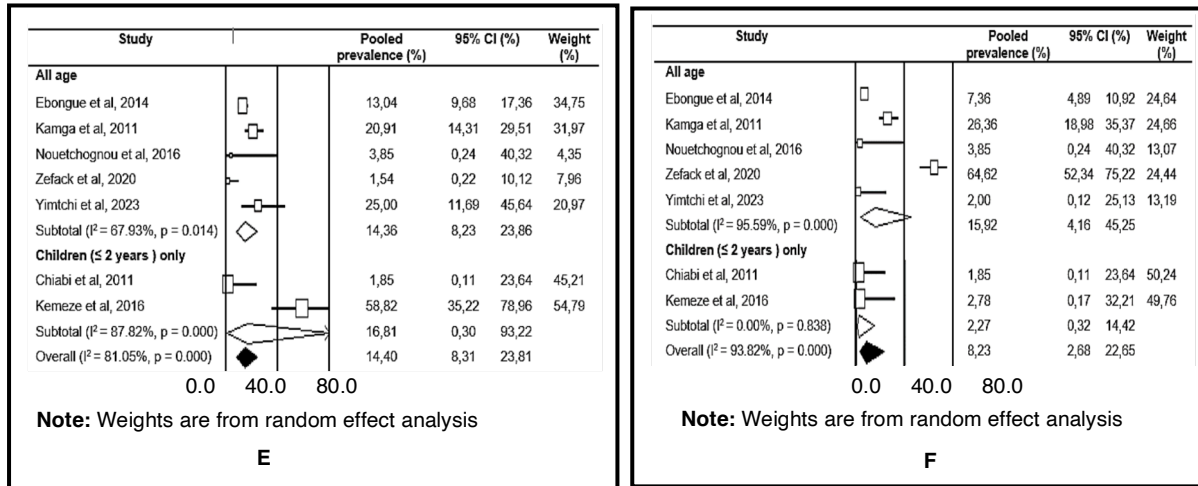


Fig. 4: Forest plot of pooled prevalence of *Enterobacteriales*-driven BSI in Cameroon.
A: *Klebsiella* spp. ; **B:** *Escherichia coli*; **C:** *Enterobacter* spp. and **D:** *Salmonella enterica*

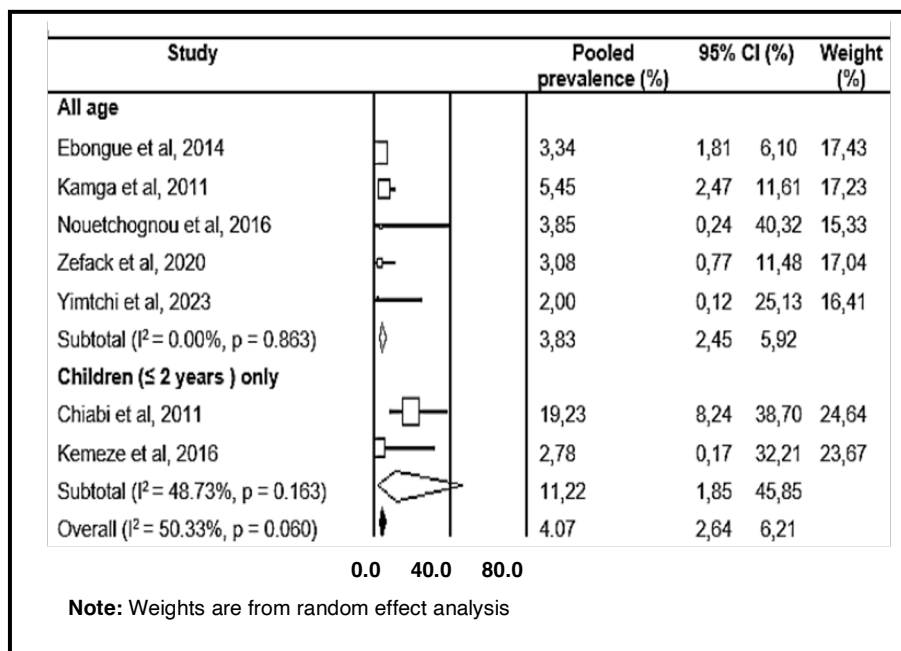
344
345
346
347
348
349
350



351
352
353
354

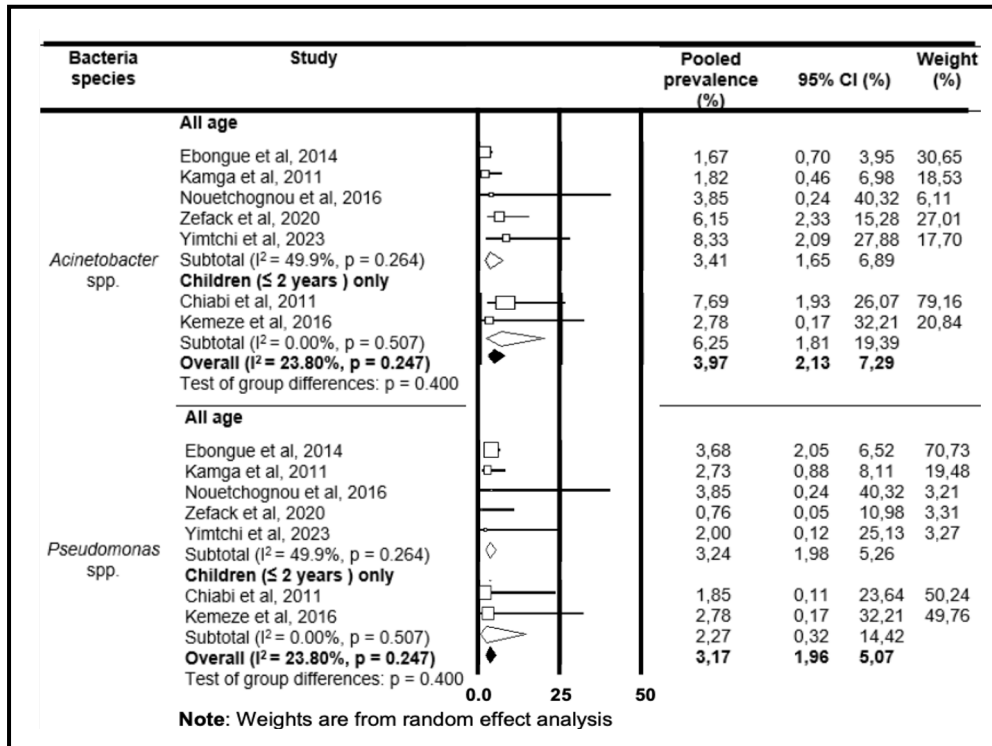
Fig. 5: Forest plot of pooled prevalence of *Staphylococci*-driven BSI in Cameroon.
E: *Staphylococcus aureus* and F: Coagulase negative *Staphylococci*

355
356
357
358
359
360
361
362
363



364

Fig. 6: Forest plot of pooled prevalence of *Streptococcus* spp. driven bloodstream infections in Cameroon



365 **Fig. 7:** Forest plot of pooled prevalence of non-fermenting Gram-negative bacteria-driven bloodstream infections
366 in Cameroon

Table 1: Summary characteristics of studies included in the meta-analysis

| Study period | Study type | City | Population size | Age range | Positive cultures (%) | Quality | Authors Study period |
|-----------------------------|-------------------|-------------|------------------------|------------------|------------------------------|----------------|----------------------------------|
| January-April 2018 | Cross-sectional | Yaoundé | 255 | 0-82 years | 65 (25.50) | Low-risk | Zefack <i>et al</i> , 2020 |
| August-October 2017 | Cross-sectional | Yaoundé | 298 | 0-48 weeks | 129 (43.30) | Low-risk | Titsamp <i>et al</i> , 2021 |
| August 2019-March 2020 | Cross-sectional | Yaoundé | 300 | 0-2 years | 130 (43.33) | Low-risk | Djuikoue <i>et al</i> , 2022 |
| March-June 2015 | Cross-sectional | Douala | 104 | 0-28 days | 17 (16.34) | Low-risk | Kemeze <i>et al</i> , 2016 |
| September 2013 - March 2014 | Longitudinal | Yaoundé | 59 | NA | 12 (20.34) | Low-risk | Nouetchognou <i>et al</i> , 2016 |
| 2006-2011 | Retrospective | Douala | 2334 | NA | 299 (12.81) | Low-risk | Ebongue <i>et al</i> , 2014 |
| January-June 2010 | Cross-sectional | Yaoundé | 396 | 0->76 years | 112 (28.30) | Low-risk | Kamga <i>et al</i> , 2011 |
| November 2008- May 2009 | Cross-sectional | Yaoundé | 218 | 0-28 days | 26 (11.92) | Low-risk | Chiabi <i>et al</i> , 2011 |
| November 2021- March 2022 | Cross-sectional | Yaoundé | 150 | 10-92 years | 24 (16) | Low-risk | Yimtchi <i>et al</i> , 2023 |
| January 2016- February 2017 | Cross-sectional | Douala | 109 | >1-71 years | 74 (67.89) | Low-risk | Teghonong <i>et al</i> , 2020 |

Table 2: Pooled prevalence of antibiotic resistance of *E. coli* and *Klebsiella* spp. isolated from bloodstream infections in Cameroon

| Bacteria | Antibiotics | Number of studies | Number of isolates | Pooled prevalence of AMR (95% CI) |
|-----------------------------------|-------------------------------|-------------------|--------------------|-----------------------------------|
| <i>E. coli</i> N = 281 | Amoxicillin | 5 | 275 | 82.6 (63.3-92.9) |
| | Amoxicillin + Clavulanic acid | 5 | 276 | 71.7 (0.44-89.2) |
| | Cefotaxime | 3 | 263 | 46.5 (26.8-67.3) |
| | Ceftazidime | 5 | 274 | 49.9 (29.5-70.3) |
| | Cefepime | 3 | 187 | 51.5 (10.9-62.0) |
| | Cefoxitin | 6 | 281 | 33.2 (18.5-52.0) |
| | Aztreonam | 4 | 108 | 49.9 (40.6-59.3) |
| | Meropenem | 3 | 180 | 26.7 (20.8-33.7) |
| | Amikacin | 5 | 274 | 37.5 (18.7-61.1) |
| | Gentamicin | 6 | 281 | 49.5 (37.3-61.7) |
| | Ciprofloxacin | 5 | 191 | 41.7 (32.6-51.4) |
| | Nalidixic acid | 3 | 185 | 34.6 (28.1-41.7) |
| | Trimethoprim/Sulfamethoxazole | 5 | 275 | 76.2 (51.3-90.7) |
| <i>Klebsiella</i> spp. N = 115 | Amoxicillin | 4 | 107 | 86.4 (55.9-97.0) |
| | Amoxicillin + Clavulanic acid | 4 | 99 | 73.1 (38.7-92.1) |
| | Cefotaxime | 3 | 99 | 30.4 (9.8-63.6) |
| | Ceftazidime | 3 | 99 | 45.4 (16.8-77.1) |
| | Cefoxitin | 4 | 107 | 35.8 (19.5-56.3) |
| | Aztreonam | 3 | 24 | 54.2 (34.2-73.0) |
| | Fosfomycin | 3 | 99 | 14.9 (9.1-23.4) |
| | Amikacin | 4 | 107 | 26.8 (6.1-67.2) |
| | Gentamicin | 5 | 115 | 44.8 (35.6-54.3) |
| | Ciprofloxacin | 5 | 115 | 56.5 (29.9-79.8) |
| | Trimethoprim/Sulfamethoxazole | 4 | 107 | 69.5 (52.3-82.6) |

Table 3: Pooled prevalence of antibiotic resistance of *S. aureus* and Coagulase Negative *Staphylococcus* (CONS) isolated from bloodstream infections in Cameroon

| Bacteria | Antibiotics | Number of studies | Total number of isolates | Pooled prevalence of AMR (95% CI) |
|----------------------------|-------------------------------|--------------------------|---------------------------------|--|
| <i>S. aureus</i> N = 68 | Penicillin | 2 | 61 | 84.4 (68.1-93.2) |
| | Oxacillin | 3 | 62 | 37.4 (8.8-78.7) |
| | Cefoxitin | 3 | 29 | 18.9 (12.0-82.1) |
| | Gentamicin | 4 | 68 | 30.2 (20.3-42.3) |
| | Erythromycin | 4 | 68 | 41.5 (28.0-56.5) |
| | Lincosamin | 2 | 62 | 27.4 (3.6-79.1) |
| | Tetracycline | 4 | 68 | 29.3 (5.6-74.2) |
| | Rifampicin | 3 | 61 | 2.9 (0.6-13.4) |
| | Trimethoprim/Sulfamethoxazole | 3 | 62 | 29.8 (19.6-42.5) |
| | Fusidic acid | 3 | 62 | 8.1 (3.4-18.0) |
| Vancomycin | 3 | 68 | 13.6 (2.2-52.9) | |
| CONS N = 93 | Penicillin | 3 | 93 | 89.9 (66.0-97.6) |
| | Oxacillin | 3 | 93 | 50.7 (25.0-76.1) |
| | Cefoxitin | 2 | 71 | 14.9 (11-73.6) |
| | Gentamicin | 3 | 93 | 36.7 (18.7-59.4) |
| | Erythromycin | 3 | 93 | 46.8 (27.3-67.4) |
| | Lincosamin | 3 | 93 | 42.0 (32.2-52.5) |
| | Tetracycline | 3 | 93 | 41.7 (27.0-58.1) |
| | Trimethoprim/Sulfamethoxazole | 3 | 93 | 52.9 (42.1-63.5) |
| | Fusidic acid | 3 | 93 | 25.5 (17.4-35.6) |
| | Vancomycin | 3 | 93 | 30 (14.4-53.2) |