

1 Relationship between mental disorders and abdominal aortic aneurysm: 2 insights from genetic perspectives

3

4 Ming-Gang Deng^{1,2}, Chen Chai³, Kai Wang⁴, Jia-Qi Nie⁵, Fang Liu⁶, Yuehui Liang⁶, Jiewei Liu^{1,2}

5

6 ¹ Department of Psychiatry, Affiliated Wuhan Mental Health Center, Tongji Medical College, Huazhong
7 University of Science and Technology, Wuhan 430012, Hubei, China.

8 ² Department of Psychiatry, Wuhan Hospital for Psychotherapy, Wuhan 430012, Hubei, China.

9 ³ Emergency Center, Hubei Clinical Research Center for Emergency and Resuscitation, Zhongnan Hospital
10 of Wuhan University, Wuhan 430071, Hubei, China.

11 ⁴ Department of Public Health, Wuhan Fourth Hospital, Wuhan 430000, Hubei, China.

12 ⁵ Xiaogan Municipal Center for Disease Control and Prevention, Xiaogan 432000, Hubei, China

13 ⁶ School of Public Health, Wuhan University, Wuhan 430071, Hubei, China.

14

15 Correspondence:

16 Ming-Gang Deng (deng.minggang@outlook.com)

17 Jiewei Liu (liujiewei@hust.edu.cn)

18 **Abstract**

19 **Objective:** To explore the correlation or potential causation between mental disorders [depression,
20 schizophrenia (SCZ), bipolar disorder (BIP)], and abdominal aortic aneurysm (AAA).

21 **Methods:** Summary-level genetic data sets were obtained from the large-scale genome-wide association
22 studies. We first investigated the genetic correlation between AAA and mental disorders from the
23 perspectives of global/local genetic correlation and shared genomic loci. Following that, the bidirectional
24 univariable Mendelian Randomization (UMR) was conducted to assess their causal relationship, with
25 multivariable MR (MVMR) to control the effect from confounders. Finally, the mediation analyses were
26 performed to evaluate whether the causality was mediated by the known risk factors, e.g., smoking, and
27 hypertension.

28 **Results:** Global genetic correlation analyses presented that depression and SCZ were correlated with AAA,
29 while BIP was not. Besides, AAA was found to be locally correlated with depression, SCZ, and BIP in 4, 7,
30 and 10 genomic regions, respectively. Additionally, a total of 26, 141, and 10 shared genomic loci were
31 respectively found between AAA and depression, SCZ, and BIP. The UMR analyses indicated genetically
32 predicted depression (OR: 1.270, 95% CI: 1.071-1.504, $p = 0.006$) and SCZ (OR: 1.047, 95% CI: 1.010-1.084,
33 $p = 0.011$) were associated with an elevated risk of AAA, while no causal effects of BIP on AAA, and AAA
34 on three mental disorders were found. These associations were consistently robust in MVMR analyses. The
35 mediation analyses indicated the causal effect of depression on AAA was mediated by smoking,
36 hypertension, hyperlipidemia, as well as coronary atherosclerosis, and smoking mediated the effect of SCZ
37 on AAA.

38 **Conclusion:** Genetically predicted depression and SCZ were associated with elevated risk of AAA, and the
39 known risk factors of AAA playing the mediation roles.

40 **Keywords:** mental disorders; abdominal aortic aneurysm; Mendelian Randomization; genetic association.

41 1. Introduction

42 Abdominal aortic aneurysm (AAA) is a prevalent vascular disease marked by localized dilation of the
43 abdominal aorta and is linked to an approximately 90% mortality risk due to rupture¹. While recent open
44 surgical repair and endovascular stent graft therapies have notably enhanced the treatment of AAA, there
45 is currently no approved and effective pharmacotherapy to restrain and prevent AAA progression and
46 rupture^{2,3}. Consequently, primary preventive measures targeting the risk factors of AAA are necessary to
47 reduce its incidence and adverse effects on health.

48 Mental disorders, such as depression, schizophrenia (SCZ), and bipolar disorder (BIP), have been found to
49 lead to various adverse outcomes. For example, our previous studies revealed that individuals with
50 depression or SCZ were more likely to be frail^{4,5}. In addition, current evidence suggests that mental
51 disorders are linked to higher risks of cardiovascular disease, which include but are not limited to heart
52 failure, coronary artery disease, and hypertension⁶⁻⁸. Therefore, investigating the association between
53 mental disorders and AAA is of vital importance for public health.

54 To our knowledge, the associations of AAA with SCZ and BIP are currently unclear, as no studies have
55 reported them. In the case of depression and AAA, a prospective study based on the Korean National
56 Health Insurance System database revealed that patients with AAA were more likely to be depressed⁹.
57 Conversely, depressed individuals were found to have a higher risk of incident AAA in the Norwegian Nord-
58 Trøndelag Health Study¹⁰. Despite this, the causative association between depression and AAA needs
59 further investigation, as observational studies were susceptible to confounding bias, reverse causality, etc.
60 Recent large-scale genome-wide association studies (GWASs) have identified numerous genetic loci
61 associated with depression¹¹, SCZ¹², BIP¹³, and AAA¹⁴. These findings enhance the statistical power and
62 offer the opportunity to explore their genetic associations. In addition, Mendelian Randomization (MR),
63 which uses genetic variants (single nucleotide polymorphisms, SNPs) as instruments, is a powerful method

64 for obtaining robust causal inference¹⁵ and has been widely utilized in recent epidemiological research¹⁶⁻
65 ¹⁸. As a result, this study aims to investigate the genetic correlation between AAA and mental disorders
66 and to utilize the MR design to evaluate their causality.

67 **2. Methods and materials**

68 **2.1. Study design**

69 An overview of this research is presented in **Fig 1**. Initially, we explored the genetic association between
70 AAA and mental disorders from three perspectives: global genetic correlation, local genetic correlation,
71 and identification of shared genomic loci. Following that, we utilized a bidirectional MR design to evaluate
72 the causal association between AAA and mental disorders. Furthermore, mediation MR analyses were
73 performed to ascertain whether the causality was mediated by known risk factors.

74 **2.2. Data sources and ethical approval**

75 The data sets utilized in this research were all publicly available from the previous studies, and the details
76 were described in the **Supplementary Methods**. The ethical approvals were all obtained by the original
77 papers, and thus the ethical approval for our study could be waived.

78 **2.3. Genetic association**

79 *2.3.1. Global genetic correlation*

80 We conducted a global genetic correlation analysis to estimate the correlation between the GWAS
81 summary statistics of AAA and three mental disorders. Two different software tools were utilized to
82 perform this analysis. The first one is Linkage disequilibrium score regression (LDSC,
83 <https://github.com/bulik/ldsc>)¹⁹. We used the cross-trait LDSC which only requires the GWAS summary
84 statistics that account for sample overlap. Cross-trait LDSC analysis requires the GWAS summary statistics
85 to be from the same ethnic group. Since the GWAS summary statistics used in this study are largely from
86 Europeans, we used the 1000 Genomes Project European samples as the reference sample for LD score

87 calculation.

88 Another complementary method for estimating global genetic correlation is the Genetic Covariance
89 Analyzer (GNOVA)²⁰. GNOVA (available at <https://github.com/xtonyjiang/GNOVA>) also requires only the
90 GWAS summary statistics as input to perform global genetic correlation analysis. The major advantage of
91 GNOVA is its ability to include omic datasets (e.g., transcriptomic and epigenomic) in the GNOVA model.
92 The LD score was also calculated using the 1000 Genomes European samples.

93 *2.3.2. Local genetic correlation*

94 In addition to estimating the global genetic correlation between the GWAS summary statistics of AAA and
95 mental disorders, we also attempted to estimate the local genetic correlation between them in specific
96 genomic regions. To perform this analysis, we used SUPERGNOVA (available at [https://github.com/qlu-
97 lab/SUPERGNOVA](https://github.com/qlu-
97 lab/SUPERGNOVA)). SUPERGNOVA was developed within the previous GNOVA statistical framework, which
98 includes functional annotation when estimating genetic correlation²¹. Similar to GNOVA, only GWAS
99 summary statistics and an LD calculation reference panel were needed as input to run SUPERGNOVA.

100 *2.3.3. Shared genomic loci*

101 To enhance the statistical power of detecting loci associated with both AAA and mental disorders, we
102 utilized the conjunctive false discovery rate (conjFDR) method for this analysis. This method is based on
103 standard FDR analysis and aims to identify SNPs that are associated with both target traits (e.g., SNPs that
104 are jointly associated with AAA and SCZ). The conjFDR analysis is implemented in the pleioFDR software
105 (available at <https://github.com/precimed/pleiofdr>), and it runs in the MATLAB environment²². The analysis
106 followed the instructions of the pleioFDR tool with default parameters.

107 **2.4. Causal inference**

108 *2.4.1. Univariate Mendelian Randomization*

109 We initially performed the univariate Mendelian Randomization (UMR) to assess the causal association
110 between mental disorders and AAA. The statistical analyses were conducted in two directions: 1) mental

111 disorders as the exposures to check the effect of mental disorders on AAA, and 2) AAA as exposures to
112 evaluate whether people with AAA had a likelihood to develop mental disorders.

113 Independent SNPs ($R^2 < 0.001$, window size = 10MB) were firstly screened at the genome-wide significance
114 threshold ($p < 5 \times 10^{-8}$) to ensure their robust association with exposure and freedom from linkage
115 disequilibrium. Subsequently, the F statistic for each SNP was calculated using the formula β^2/se^2 , and
116 those with an $F < 10$ were considered weak instruments and were excluded. The remaining SNPs were
117 harmonized with the outcome data, and the palindromic genetic variants were eliminated at this stage. If
118 any genetic variants were unavailable in the outcome data, they will be replaced by the proxied SNPs if
119 possible. After the aforementioned procedures, the remaining SNPs were used for causal inference.

120 The inverse variance weighted (IVW) method was used as the primary approach to obtain the causal
121 estimate, assuming the absence of average pleiotropic effects, and in this scenario, it is the most efficient
122 method. Cochran's Q statistic was computed to assess the heterogeneity among the SNPs. If significant
123 heterogeneity was detected ($p < 0.05$), the IVW method would be applied under a random-effects model;
124 otherwise, it would be applied under a fixed-effects model. Alongside the IVW method, several other
125 approaches, such as MR-Egger, weighted median, MR-cML (constrained maximum likelihood), and MR-
126 RAPS (robust adjusted profile score), were employed to evaluate the robustness of the findings. In the
127 meantime, the MR-Egger regression intercept term was utilized to evaluate the presence of horizontal
128 pleiotropy among the instruments.

129 *2.4.2. Multivariate Mendelian Randomization*

130 The multivariate Mendelian Randomization (MVMR), which employs SNPs associated with various and
131 potentially related exposures, is an extension of UMR that can detect the causal effects of many risk factors
132 simultaneously²³. Considering that the instrumental variables in the UMR may meanwhile be linked to
133 secondary phenotypes and even to the risk factor of outcomes, which may violate the critical assumption
134 of MR, we further carried out the MVMR to ascertain if the UMR estimates were affected by any

135 confounders. The PhenoScanner V2, an expanded tool for searching human genotype-phenotype
136 associations, was employed in advance to screen the secondary phenotypes with which the instrumental
137 variables were associated²⁴. The significant confounding phenotype ($p < 1 \times 10^{-5}$) would then be included
138 as a covariate in the MVMR model. Similar to the UMR analyses, the multivariable-adjusted effect sizes
139 were primarily estimated by the IVW method, and supplemented by the MR-Egger, weighted median, and
140 MR-cML methods.

141 *2.4.3. Mediation effect of known risk factors*

142 After establishing the causal relationship between mental disorders and AAA, our objective is to delve
143 deeper into whether this causality is mediated by known risk factors. For example, smoking, hypertension,
144 hyperlipidemia, and coronary atherosclerosis (CA) have been identified as risk factors for AAA³. To assess
145 their mediation role, a two-step UMR analysis was performed. The first step involved estimating the causal
146 effects of mental disorders on smoking, hypertension, hyperlipidemia, and coronary atherosclerosis, and
147 the second step involved estimating the causal effects of smoking, hypertension, hyperlipidemia, and CA
148 on AAA. The mediation proportion was calculated based on the causal effect estimated by the IVW method,
149 while other methods, including MR-Egger, weighted median, MR-cML, and MR-RAPS, were employed as
150 sensitivity analyses.

151 **3. Results**

152 **3.1. Genetic association**

153 *3.1.1. Global genetic correlation*

154 The estimates of the global genetic correlation between mental disorders and AAA are presented in **Fig 1**.
155 The LDSC method indicated that genetic variants related to depression [$r_g = 0.157$, $se = 0.023$, $p = 3.52 \times 10^{-12}$]
156 and SCZ ($r_g = 0.042$, $se = 0.020$, $p = 0.042$) were positively correlated with AAA, while BIP was not ($r_g =$
157 0.013 , $se = 0.023$, $p = 0.591$). Additionally, the GNOVA method estimates further supported these findings,

158 indicating a positive association of AAA with depression ($r_g = 0.152$, $se = 0.019$, $p = 8.41 \times 10^{-16}$) and SCZ ($r_g =$
159 0.053 , $se = 0.017$, $p = 0.002$). Conversely, BIP did not demonstrate a significant association with AAA ($r_g =$
160 0.021 , $se = 0.019$, $p = 0.272$).

161 *3.1.2. Local genetic correlation*

162 The local genetic correlation analyses revealed that mental disorders exhibited local correlations with AAA
163 in various genomic regions, as detailed in **Table 1**. Following correction for multiple tests, depression was
164 identified to have a positive association with AAA in four genomic regions (chr9: 126927204-128926989,
165 chr10: 106139294-107874146, chr11: 42244050-42854352, and chr18: 77151867-78017074). Additionally,
166 SCZ demonstrated a positive correlation with AAA in 9 out of 10 significant regions. While the global
167 correlation did not indicate an association between BIP and AAA, the local analyses revealed correlations
168 in 7 genomic regions, with 6 of them also showing a positive association.

169 *3.1.3. Shared genetic variants*

170 In line with the preceding analyses, a multitude of shared genetic variants have been discerned between
171 mental disorders and AAA. The findings are meticulously outlined in **Fig. 2** and **Table S1**. Specifically,
172 there are 26 independent SNPs shared between depression and AAA, with 21 of them demonstrating a
173 consistent directional effect on both conditions. Similarly, SCZ and AAA exhibit the sharing of 141
174 independent loci, among which 21 loci manifest an opposing effect. Notably, only 10 genetic variants are
175 concurrently associated with BIP and AAA, with 4 of them displaying the same directional effect.

176 **3.2. Causal inference**

177 *3.2.1. Univariate Mendelian Randomization*

178 We initially examined the bidirectional causal relationship between mental disorders and AAA using the
179 UMR, and the results are illustrated in **Fig. 3**. In the forward analyses, the MR-Egger regression intercept
180 suggested the absence of horizontal pleiotropy among the selected SNPs (p values all > 0.05). The
181 Cochran's Q test revealed significant heterogeneity among the instruments concerning depression

182 (Cochran's $Q = 163.448$, $p < 0.001$), SCZ (Cochran's $Q = 333.578$, $p < 0.001$), and BIP (Cochran's $Q = 32.604$,
183 $p = 0.002$). Consequently, the primary causal inference utilized the random-effect IVW method. The IVW
184 method revealed that people with depression (OR: 1.270, 95% CI: 1.071-1.504, $p = 0.006$) and SCZ (OR:
185 1.047, 95% CI: 1.010-1.084, $p = 0.011$) have a heightened susceptibility to AAA, while no causal effect of
186 BIP on AAA was found (OR: 0.980, 95% CI: 0.896-1.121, $p = 0.653$).

187 The findings mentioned above are supported by the weighted median, MR-CML, and MR-RAPS methods.
188 For the reverse analyses, the MR-Egger regression intercept also demonstrated there was no horizontal
189 pleiotropy among the AAA associated instrumental variables, and obvious heterogeneity was identified.
190 The IVW method revealed that genetically predicted AAA showed no association with the risks of
191 depression (OR: 1.010, 95% CI: 0.995-1.025, $p = 0.190$), SCZ (OR: 1.007, 95% CI: 0.968-1.048, $p = 0.740$), as
192 well as BIP (OR: 0.989, 95% CI: 0.944-1.037, $p = 0.646$), and these null associations were consistently
193 supported by estimates from the MR-Egger, weighted median, MR-cML, and MR-RAPS methods.

194 *3.2.2. Multivariate Mendelian Randomization*

195 After performing the UMR, we proceeded with the MVMR to evaluate potential bias in the causal estimates
196 due to confounding effects. The PhenoScanner revealed that instruments associated with mental disorders
197 were predominantly linked to body mass index (BMI) (**Table S2**). Additionally, SNPs associated with AAA
198 were found to be correlated with BMI, coronary heart disease (CAD), high-density lipoprotein cholesterol
199 (HDL-C), low-density lipoprotein cholesterol (LDL-C), and total cholesterol (TC) (**Table S3**). Consequently,
200 we conducted bidirectional MVMR to evaluate the multivariate-adjusted causal estimates between mental
201 disorders and AAA. The forward analyses aimed to assess the effect of mental disorders on AAA with
202 adjustments for BMI, while the reverse analyses aimed to evaluate the effect of AAA on mental disorders
203 with adjustments for BMI, CAD, HDL-C, LDL-C, and TC.

204 The results of MVMR are presented in **Table S4**. The IVW method revealed that individuals with depression
205 (OR: 1.315, 95% CI: 1.095-1.578, $p = 0.003$) and SCZ (OR: 1.042, 95% CI: 1.0004-1.084, $p = 0.048$) were

206 correlated with a higher risk of AAA even after controlling the effect of BMI, while people with BIP were
207 not (OR: 1.014, 95% CI: 0.955- 1.076, $p = 0.652$). Consistent with the results of UMR, the IVW methods also
208 presented that genetically predicted AAA still showed no association with the risks of depression, SCZ, and
209 BIP after adjustments for BMI, CAD, HDL-C, LDL-C, and TC. These bidirectional relationships were
210 supported by the sensitivity analysis methods.

211 *3.2.3. Mediation Mendelian Randomization*

212 Since the UMR and MVMR only supported the causal effects of depression and SCZ on AAA, we would
213 only investigate whether these two causalities were mediated by the known risk factors of AAA. As
214 described in the methods section, we selected smoking, hypertension, hyperlipidemia, and CA as the four
215 candidate mediating factors.

216 The results of mediation MR analyses are presented in **Table S5**. The first step MR analyses presented that
217 genetically predicted depression was associated with increased odds ratio of smoking (OR: 1.236, 95% CI:
218 1.140-1.340, $p < 0.001$), hypertension (OR: 1.206, 95% CI: 1.069-1.361, $p = 0.002$), hyperlipidemia (OR: 1.200,
219 95% CI: 1.037-1.388, $p = 0.015$), and CA (OR: 1.210, 95% CI: 1.078-1.359, $p = 0.001$). In contrast, genetically
220 predicted SCZ was only associated with an increased likelihood of smoking (OR: 1.047, 95% CI: 1.023-1.071,
221 $p < 0.001$). The second step MR analyses demonstrated that genetically predicted smoking (OR: 1.610, 95%
222 CI: 1.449-1.788, $p < 0.001$), hypertension (OR: 1.218, 95% CI: 1.142-1.300, $p < 0.001$), hyperlipidemia (OR:
223 1.547, 1.288-1.857, $p < 0.001$), and CA (OR: 1.385, 95% CI: 1.204-1.594, $p < 0.001$) were all associated with
224 elevated risks of AAA. Based on the results of mediation MR findings, the causal effect of depression on
225 AAA was mediated by smoking, hypertension, hyperlipidemia, and CA, while the causal effect of SCZ on
226 AAA was mediated by smoking only (**Fig 4**).

227 **4. Discussion**

228 We conducted an investigation into the relationship between mental disorders and AAA from the genetic

229 perspective. Our findings provided solid evidence of the genetic correlation between AAA and depression
230 as well as SCZ. Besides, the causal effects of depression and SCZ on AAA were identified, with known risk
231 factors for AAA playing a mediating role.

232 Few studies have investigated the associations between mental disorders and AAA, with the evidence
233 supporting the correlations between depression and AAA being limited. Furthermore, a study involving
234 574 participants from four centers in Australia suggested an insignificant association between depression
235 and AAA growth²⁵, contradicting conclusions drawn in previous studies from another perspective. Given
236 the scarcity of research and the inconsistency of results, we conducted comprehensive genetic association,
237 and univariate, multivariate as well as mediating MR to evaluate the correlation and causal links between
238 mental disorders and AAA.

239 The global genetic correlation analyses indicated positive associations of AAA with depression and SCZ,
240 and meanwhile, numerous locally correlated genomic regions and shared loci were identified. The genetic
241 association analyses presented that AAA had plenty of genetic basis with mental disorders. The results of
242 univariate and multivariate MR analyses demonstrated robust and statistically significant associations of
243 depression, SCZ, and AAA, and we further extended our investigation through mediation analysis to
244 delineate potential pathways underlying these associations. By incorporating well-established risk factors
245 of AAA as potential mediators, significant mediation effects of smoking, hyperlipidemia, CA, and
246 hypertension were identified in the causal pathways between depression and AAA, and the proportions of
247 mediation effects were calculated as 42.22%, 32.20%, 26.05%, and 15.41%, respectively. In addition,
248 smoking exhibited a substantial mediation effect proportion of 47.60% in the association between SCZ
249 and AAA. These findings underscore the pivotal role of smoking in the nexus between mental disorders
250 and AAA, offering crucial insights for further etiological explorations.

251 While the pathological mechanism of AAA remains elusive, existing literature has elucidated a series of

252 contributing processes, notably the infiltration and subsequent destruction of the aortic wall mediated by
253 immune and inflammatory mechanisms²⁶. Both innate and adaptive immune cells, including macrophages
254 and T cells, have undergone extensive scrutiny in the pathogenesis of AAA, with several inflammasomes
255 suggested to be involved in both the inhibition and amelioration of AAA^{27,28}. NF- κ B, the primary regulator
256 of inflammation and immune response, is activated by multiple factors including angiotensin II, triggering
257 macrophage infiltration, inflammation, and subsequent aortic deterioration²⁹. Numerous studies have
258 explored the impact of pharmacological inhibition of nucleotide-binding oligomerization domain-like
259 receptor family protein 3 (NLRP3) inflammasome on experimental AAAs, revealing preventive effects
260 characterized by reduced AAA diameter and incidence³⁰⁻³², etc. Furthermore, the remarkable parallels
261 between the immune system and the brain, both intricately integrated and complex systems associated
262 with memory, imply intimate connections between immune responses and mental disorders. For instance,
263 some researchers consider depression as an inflammatory disease^{33,34}, with inflammation likely playing a
264 critical role in heightening individual susceptibility to depression³⁵. Similarly, extensive reviews have
265 highlighted the central role of inflammation and immunity in SCZ, findings supported by both human and
266 animal studies^{36,37}. Several two-sample MR studies indicate the causal associations of inflammatory
267 biomarkers such as C-reactive protein and soluble interleukin-6 receptor with SCZ, with anti-inflammation
268 strategies emerging as therapeutic considerations^{38,39}. Therefore, inflammation and immune responses
269 may function as a conduit linking mental disorders and AAA.

270 Similar to other cardiovascular diseases (CVD), the relationship between mental disorders and AAA may
271 also be explained by the shared etiological factors, encompassing genetic, biological, and behavioral
272 mechanisms. Early in 2002, Bondy et al. found that the same allelic combination of two genes could
273 increase the vulnerability for depressive disorder while also being associated with a higher risk of
274 myocardial infarction⁴⁰, suggesting the genetic associations between depression and CVD. Molecular

275 genetic studies have further corroborated modest genetic correlations between severe mental illness and
276 CVD⁴¹. Furthermore, biological constituents such as neutrophil gelatinase associated lipocalin⁴² and
277 physiological processes like platelet receptors⁴³ and function have been implicated as mediating factors
278 linking CVD and depression. Moreover, the overlap of behavioral determinants including smoking, physical
279 inactivity, obesity, and poor diet was observed among participants affected by mental disorders and CVD.
280 Similarly, GWAS studies have unveiled extensive genetic convergence between SCZ and CVD risk factors,
281 with notable associations observed with smoking initiation and body mass index⁴⁴.

282 Our study had several strengths worth pointing out. Firstly, we utilized the genetic data from the large-
283 scale GWASs, which could significantly enhance the statistical power and avoid the confounding bias and
284 reverse causality of observational studies. Additionally, we conducted two parts of analyses, including
285 genetic correlation and causality inference, and the results provided consistent evidence on the causal
286 effects of depression and SCZ on AAA. Furthermore, we identified the mediation effect, which highlighted
287 the interactive impacts of mental disorders and other risk factors on the risk of AAA.

288 Despite these advantages, our findings should be interpreted in the context of limitations. Firstly, the most
289 recent GWAS of BIP have identified various significant SNPs⁴⁵, but the samples overlapped with the AAA.
290 To avoid the causal inference bias due to sample overlap, we selected the genetic variants associated with
291 BIP from the GWAS with relatively lower sample sizes¹³. Further studies were warranted to check the
292 relationship between BIP and AAA. In addition, only the summary-level data could be obtained thus
293 making us unable to perform the stratified analyses, while current knowledge indicates that the prevalence
294 of AAA in males was higher than the females. Further research was needed to confirm our findings in
295 specific sub-populations. Lastly, the samples were all of European ancestry, making our findings may not
296 apply to other populations.

297 **5. Conclusion**

298 Genetically predicted depression and schizophrenia were associated with elevated risk of abdominal aortic
299 aneurysm, and the known risk factors of abdominal aortic aneurysm played mediation roles.

300 **6. Declarations**

301 **Author contributions:** **Ming-Gang Deng:** Conceptualization, Methodology, Data Curation, Formal
302 Analysis, and Writing - Original Draft; **Chen Chai:** Writing - Original Draft; Kai Wang: Writing - Original
303 Draft; **Jia-Qi Nie:** Writing – review & editing, **Fang Liu:** Writing – review & editing, **Yuehui Liang:** Writing
304 – review & editing, **Jiewei Liu:** Conceptualization, and Writing - Original Draft.

305 Acknowledgment: None.

306 **Ethical approval:** The datasets used in this study were all publicly available from previous studies, and the
307 ethical approvals were obtained by the original researchers. Therefore, the ethical approval for this study
308 could be waived.

309 **Conflict of interest:** None.

310 **Funding:** This study received no external funding.

311 **Data availability:** The datasets utilized in this study are publicly available and the details can be found in
312 the supplementary method.

313 **Code availability:** ldsc (<https://github.com/bulik/ldsc>), GNOVA (<https://github.com/xtonyjiang/GNOVA>
314 [A](#)), SUPERGNOVA (<https://github.com/qlu-lab/SUPERGNOVA>), pleioFDR ([https://github.com/precimed/
315 pleiofdr](https://github.com/precimed/pleiofdr)), TwoSampleMR (<https://mrcieu.github.io/TwoSampleMR/>), MendelianRandomization ([https://
316 github.com/cran/MendelianRandomization](https://github.com/cran/MendelianRandomization)), and mr.raps (<https://github.com/qingyuanzhao/mr.raps>).

317 7. Reference

- 318 1. Summers KL, Kerut EK, Sheahan CM, Sheahan MG, 3rd. Evaluating the prevalence of abdominal
319 aortic aneurysms in the United States through a national screening database. *Journal of vascular*
320 *surgery*. 2021;73:61-68. doi: 10.1016/j.jvs.2020.03.046
- 321 2. Davis FM, Rateri DL, Daugherty A. Abdominal aortic aneurysm: novel mechanisms and therapies.
322 *Current opinion in cardiology*. 2015;30:566-573. doi: 10.1097/hco.0000000000000216
- 323 3. Zhang F, Li K, Zhang W, Zhao Z, Chang F, Du J, Zhang X, Bao K, Zhang C, Shi L, et al. Ganglioside
324 GM3 Protects Against Abdominal Aortic Aneurysm by Suppressing Ferroptosis in Vascular Smooth
325 Muscle Cells. *Circulation*. 2023. doi: 10.1161/circulationaha.123.066110
- 326 4. Deng MG, Liu F, Liang Y, Wang K, Nie JQ, Liu J. Association between frailty and depression: A
327 bidirectional Mendelian randomization study. *Science advances*. 2023;9:eadi3902. doi:
328 10.1126/sciadv.adi3902
- 329 5. Deng M-G, Wang K, Liu F, Zhou X, Liu J. The Relationship Between Frailty and Schizophrenia: A
330 Genetic Association and Mendelian Randomization Study. 2023. doi: 10.21203/rs.3.rs-3670648/v1
- 331 6. Li GH, Cheung CL, Chung AK, Cheung BM, Wong IC, Fok MLY, Au PC, Sham PC. Evaluation of bi-
332 directional causal association between depression and cardiovascular diseases: a Mendelian
333 randomization study. *Psychological medicine*. 2022;52:1765-1776. doi:
334 10.1017/s0033291720003566
- 335 7. Veeneman RR, Vermeulen JM, Abdellaoui A, Sanderson E, Wootton RE, Tadros R, Bezzina CR, Denys
336 D, Munafò MR, Verweij KJH, et al. Exploring the Relationship Between Schizophrenia and
337 Cardiovascular Disease: A Genetic Correlation and Multivariable Mendelian Randomization Study.
338 *Schizophrenia bulletin*. 2022;48:463-473. doi: 10.1093/schbul/sbab132
- 339 8. So HC, Chau KL, Ao FK, Mo CH, Sham PC. Exploring shared genetic bases and causal relationships
340 of schizophrenia and bipolar disorder with 28 cardiovascular and metabolic traits. *Psychological*
341 *medicine*. 2019;49:1286-1298. doi: 10.1017/s0033291718001812
- 342 9. Kim MH, Yoo JH, Cho HJ, Ko KJ, Jun KW, Han KD, Hwang JK. Increased depression risk in patients
343 with abdominal aortic aneurysm: a nationwide cohort study. *Annals of surgical treatment and*
344 *research*. 2021;101:291-298. doi: 10.4174/astr.2021.101.5.291

- 345 10. Nyrønning L, Stenman M, Hultgren R, Albrektsen G, Videm V, Mattsson E. Symptoms of Depression
346 and Risk of Abdominal Aortic Aneurysm: A HUNT Study. *Journal of the American Heart Association*.
347 2019;8:e012535. doi: 10.1161/jaha.119.012535
- 348 11. Howard DM, Adams MJ, Clarke TK, Hafferty JD, Gibson J, Shirali M, Coleman JRI, Hagenaars SP,
349 Ward J, Wigmore EM, et al. Genome-wide meta-analysis of depression identifies 102 independent
350 variants and highlights the importance of the prefrontal brain regions. *Nature neuroscience*.
351 2019;22:343-352. doi: 10.1038/s41593-018-0326-7
- 352 12. Trubetskoy V, Pardiñas AF, Qi T, Panagiotaropoulou G, Awasthi S, Bigdeli TB, Bryois J, Chen CY,
353 Dennison CA, Hall LS, et al. Mapping genomic loci implicates genes and synaptic biology in
354 schizophrenia. *Nature*. 2022;604:502-508. doi: 10.1038/s41586-022-04434-5
- 355 13. Stahl EA, Breen G, Forstner AJ, McQuillin A, Ripke S, Trubetskoy V, Mattheisen M, Wang Y, Coleman
356 JRI, Gaspar HA, et al. Genome-wide association study identifies 30 loci associated with bipolar
357 disorder. *Nature genetics*. 2019;51:793-803. doi: 10.1038/s41588-019-0397-8
- 358 14. Roychowdhury T, Klarin D, Levin MG, Spin JM, Rhee YH, Deng A, Headley CA, Tsao NL, Gellatly C,
359 Zuber V, et al. Genome-wide association meta-analysis identifies risk loci for abdominal aortic
360 aneurysm and highlights PCSK9 as a therapeutic target. *Nature genetics*. 2023;55:1831-1842. doi:
361 10.1038/s41588-023-01510-y
- 362 15. Emdin CA, Khera AV, Kathiresan S. Mendelian Randomization. *Jama*. 2017;318:1925-1926. doi:
363 10.1001/jama.2017.17219
- 364 16. Deng MG, Cui HT, Nie JQ, Liang Y, Chai C. Genetic association between circulating selenium level
365 and the risk of schizophrenia in the European population: A two-sample Mendelian randomization
366 study. *Frontiers in nutrition*. 2022;9:969887. doi: 10.3389/fnut.2022.969887
- 367 17. Deng MG, Liu F, Wang K, Liang Y, Nie JQ, Chai C. Genetic association between coffee/caffeine
368 consumption and the risk of obstructive sleep apnea in the European population: a two-sample
369 Mendelian randomization study. *European journal of nutrition*. 2023;62:3423-3431. doi:
370 10.1007/s00394-023-03239-0
- 371 18. Yu X, Deng MG, Tang ZY, Zhang ZJ. Urticaria and increased risk of rheumatoid arthritis: a two-
372 sample Mendelian randomisation study in European population. *Modern rheumatology*.
373 2022;32:736-740. doi: 10.1093/mr/roab052

- 374 19. Bulik-Sullivan B, Finucane HK, Anttila V, Gusev A, Day FR, Loh PR, Duncan L, Perry JR, Patterson N,
375 Robinson EB, et al. An atlas of genetic correlations across human diseases and traits. *Nature*
376 *genetics*. 2015;47:1236-1241. doi: 10.1038/ng.3406
- 377 20. Lu Q, Li B, Ou D, Erlendsdottir M, Powles RL, Jiang T, Hu Y, Chang D, Jin C, Dai W, et al. A Powerful
378 Approach to Estimating Annotation-Stratified Genetic Covariance via GWAS Summary Statistics.
379 *American journal of human genetics*. 2017;101:939-964. doi: 10.1016/j.ajhg.2017.11.001
- 380 21. Zhang Y, Lu Q, Ye Y, Huang K, Liu W, Wu Y, Zhong X, Li B, Yu Z, Travers BG, et al. SUPERGNOVA:
381 local genetic correlation analysis reveals heterogeneous etiologic sharing of complex traits.
382 *Genome biology*. 2021;22:262. doi: 10.1186/s13059-021-02478-w
- 383 22. Andreassen OA, Thompson WK, Schork AJ, Ripke S, Mattingsdal M, Kelsoe JR, Kendler KS,
384 O'Donovan MC, Rujescu D, Werge T, et al. Improved detection of common variants associated with
385 schizophrenia and bipolar disorder using pleiotropy-informed conditional false discovery rate.
386 *PLoS genetics*. 2013;9:e1003455. doi: 10.1371/journal.pgen.1003455
- 387 23. Sanderson E. Multivariable Mendelian Randomization and Mediation. *Cold Spring Harbor*
388 *perspectives in medicine*. 2021;11. doi: 10.1101/cshperspect.a038984
- 389 24. Kamat MA, Blackshaw JA, Young R, Surendran P, Burgess S, Danesh J, Butterworth AS, Staley JR.
390 PhenoScanner V2: an expanded tool for searching human genotype-phenotype associations.
391 *Bioinformatics (Oxford, England)*. 2019;35:4851-4853. doi: 10.1093/bioinformatics/btz469
- 392 25. Thanigaimani S, Phie J, Quigley F, Bourke M, Bourke B, Velu R, Jenkins J, Golledge J. Association of
393 Diagnosis of Depression and Small Abdominal Aortic Aneurysm Growth. *Annals of vascular*
394 *surgery*. 2022;79:256-263. doi: 10.1016/j.avsg.2021.06.038
- 395 26. Márquez-Sánchez AC, Koltsova EK. Immune and inflammatory mechanisms of abdominal aortic
396 aneurysm. *Frontiers in immunology*. 2022;13:989933. doi: 10.3389/fimmu.2022.989933
- 397 27. Yuan Z, Lu Y, Wei J, Wu J, Yang J, Cai Z. Abdominal Aortic Aneurysm: Roles of Inflammatory Cells.
398 *Frontiers in immunology*. 2020;11:609161. doi: 10.3389/fimmu.2020.609161
- 399 28. Raffort J, Lareyre F, Clément M, Hassen-Khodja R, Chinetti G, Mallat Z. Monocytes and
400 macrophages in abdominal aortic aneurysm. *Nature reviews Cardiology*. 2017;14:457-471. doi:
401 10.1038/nrcardio.2017.52
- 402 29. Li Z, Kong W. Cellular signaling in Abdominal Aortic Aneurysm. *Cellular signalling*. 2020;70:109575.
403 doi: 10.1016/j.cellsig.2020.109575

- 404 30. Tsuruda T, Kato J, Hatakeyama K, Kojima K, Yano M, Yano Y, Nakamura K, Nakamura-Uchiyama F,
405 Matsushima Y, Imamura T, et al. Adventitial mast cells contribute to pathogenesis in the
406 progression of abdominal aortic aneurysm. *Circulation research*. 2008;102:1368-1377. doi:
407 10.1161/circresaha.108.173682
- 408 31. Yamanouchi D, Morgan S, Kato K, Lengfeld J, Zhang F, Liu B. Effects of caspase inhibitor on
409 angiotensin II-induced abdominal aortic aneurysm in apolipoprotein E-deficient mice.
410 *Arteriosclerosis, thrombosis, and vascular biology*. 2010;30:702-707. doi:
411 10.1161/atvbaha.109.200527
- 412 32. Kaneko H, Anzai T, Morisawa M, Kohno T, Nagai T, Anzai A, Takahashi T, Shimoda M, Sasaki A,
413 Maekawa Y, et al. Resveratrol prevents the development of abdominal aortic aneurysm through
414 attenuation of inflammation, oxidative stress, and neovascularization. *Atherosclerosis*.
415 2011;217:350-357. doi: 10.1016/j.atherosclerosis.2011.03.042
- 416 33. Berk M, Williams LJ, Jacka FN, O'Neil A, Pasco JA, Moylan S, Allen NB, Stuart AL, Hayley AC, Byrne
417 ML, et al. So depression is an inflammatory disease, but where does the inflammation come from?
418 *BMC medicine*. 2013;11:200. doi: 10.1186/1741-7015-11-200
- 419 34. Halaris A. Inflammation and depression but where does the inflammation come from? *Current*
420 *opinion in psychiatry*. 2019;32:422-428. doi: 10.1097/ycp.0000000000000531
- 421 35. Beurel E, Toups M, Nemeroff CB. The Bidirectional Relationship of Depression and Inflammation:
422 Double Trouble. *Neuron*. 2020;107:234-256. doi: 10.1016/j.neuron.2020.06.002
- 423 36. Müller N. Inflammation in Schizophrenia: Pathogenetic Aspects and Therapeutic Considerations.
424 *Schizophrenia bulletin*. 2018;44:973-982. doi: 10.1093/schbul/sby024
- 425 37. Khandaker GM, Cousins L, Deakin J, Lennox BR, Yolken R, Jones PB. Inflammation and immunity in
426 schizophrenia: implications for pathophysiology and treatment. *The lancet Psychiatry*. 2015;2:258-
427 270. doi: 10.1016/s2215-0366(14)00122-9
- 428 38. Hartwig FP, Borges MC, Horta BL, Bowden J, Davey Smith G. Inflammatory Biomarkers and Risk of
429 Schizophrenia: A 2-Sample Mendelian Randomization Study. *JAMA psychiatry*. 2017;74:1226-1233.
430 doi: 10.1001/jamapsychiatry.2017.3191
- 431 39. Williams JA, Burgess S, Suckling J, Lalouis PA, Batool F, Griffiths SL, Palmer E, Karwath A, Barsky A,
432 Gkoutos GV, et al. Inflammation and Brain Structure in Schizophrenia and Other Neuropsychiatric
433 Disorders: A Mendelian Randomization Study. *JAMA psychiatry*. 2022;79:498-507. doi:
434 10.1001/jamapsychiatry.2022.0407

- 435 40. Bondy B, Baghai TC, Zill P, Bottlender R, Jaeger M, Minov C, Schule C, Zwanzger P, Rupprecht R,
436 Engel RR. Combined action of the ACE D- and the G-protein beta3 T-allele in major depression: a
437 possible link to cardiovascular disease? *Molecular psychiatry*. 2002;7:1120-1126. doi:
438 10.1038/sj.mp.4001149
- 439 41. Amare AT, Schubert KO, Klingler-Hoffmann M, Cohen-Woods S, Baune BT. The genetic overlap
440 between mood disorders and cardiometabolic diseases: a systematic review of genome wide and
441 candidate gene studies. *Translational psychiatry*. 2017;7:e1007. doi: 10.1038/tp.2016.261
- 442 42. Gouweleeuw L, Naudé PJ, Rots M, DeJongste MJ, Eisel UL, Schoemaker RG. The role of neutrophil
443 gelatinase associated lipocalin (NGAL) as biological constituent linking depression and
444 cardiovascular disease. *Brain, behavior, and immunity*. 2015;46:23-32. doi:
445 10.1016/j.bbi.2014.12.026
- 446 43. Amadio P, Zarà M, Sandrini L, Ieraci A, Barbieri SS. Depression and Cardiovascular Disease: The
447 Viewpoint of Platelets. *International journal of molecular sciences*. 2020;21. doi:
448 10.3390/ijms21207560
- 449 44. Røddevand L, Rahman Z, Hindley GFL, Smeland OB, Frei O, Tekin TF, Kutrolli G, Bahrami S, Hoseth
450 EZ, Shadrin A, et al. Characterizing the Shared Genetic Underpinnings of Schizophrenia and
451 Cardiovascular Disease Risk Factors. *The American journal of psychiatry*. 2023;180:815-826. doi:
452 10.1176/appi.ajp.20220660
- 453 45. Mullins N, Forstner AJ, O'Connell KS, Coombes B, Coleman JRI, Qiao Z, Als TD, Bigdeli TB, Børte S,
454 Bryois J, et al. Genome-wide association study of more than 40,000 bipolar disorder cases provides
455 new insights into the underlying biology. *Nature genetics*. 2021;53:817-829. doi: 10.1038/s41588-
456 021-00857-4
- 457

458

Table 1. Locally correlated genomic regions between mental disorders and abdominal aortic aneurysm.

trait	chr	start	end	rho	corr	h2_1	h2_2	var	m	p-value	p.adjust
Depression & AAA	9	126927204	128926989	7.98E-05	0.945	7.26E-05	9.81E-05	2.47E-10	644	3.78E-07	8.57E-04
Depression & AAA	10	106139294	107874146	6.17E-05	1.112	1.40E-05	2.19E-04	1.72E-10	758	2.58E-06	2.93E-03
Depression & AAA	11	42244050	42854352	4.31E-05	1.130	2.05E-05	7.07E-05	9.28E-11	277	7.83E-06	5.92E-03
Depression & AAA	18	77151867	78017074	4.62E-05	1.159	2.74E-05	5.79E-05	1.12E-10	323	1.30E-05	7.37E-03
SCZ & AAA	2	73174848	74121000	7.41E-05	0.907	1.61E-05	4.15E-04	3.73E-10	277	1.24E-04	2.84E-02
SCZ & AAA	2	232791948	233964632	-1.38E-04	-1.021	2.56E-05	7.19E-04	6.93E-10	514	1.44E-07	1.64E-04
SCZ & AAA	5	73508509	75240469	1.21E-04	0.792	9.10E-05	2.57E-04	9.36E-10	766	7.55E-05	2.46E-02
SCZ & AAA	10	106139294	107874146	1.16E-04	1.355	1.40E-05	5.21E-04	7.46E-10	759	2.28E-05	1.30E-02
SCZ & AAA	10	130282817	131192968	1.08E-04	1.746	3.02E-05	1.27E-04	7.75E-10	576	1.02E-04	2.59E-02
SCZ & AAA	11	16790799	18788126	1.76E-04	0.722	6.85E-05	8.64E-04	1.90E-09	974	5.51E-05	2.19E-02
SCZ & AAA	12	2176265	2886299	9.31E-05	0.815	6.39E-06	2.04E-03	5.36E-10	367	5.76E-05	2.19E-02
SCZ & AAA	14	102341650	104759919	2.23E-04	0.671	8.11E-05	1.37E-03	2.12E-09	801	1.28E-06	9.75E-04
SCZ & AAA	15	78640760	79259009	2.80E-04	0.777	1.88E-04	6.91E-04	1.27E-09	202	3.75E-15	8.56E-12
SCZ & AAA	17	820511	1480393	1.05E-04	1.043	2.83E-05	3.56E-04	7.27E-10	264	1.01E-04	2.59E-02
BIP & AAA	2	73174848	74121000	8.47E-05	1.036	1.61E-05	4.15E-04	4.64E-10	277	8.37E-05	3.01E-02
BIP & AAA	8	24457122	25461315	-2.03E-04	-0.944	7.38E-05	6.29E-04	1.71E-09	466	9.08E-07	1.04E-03
BIP & AAA	12	47505424	48267360	1.90E-04	1.252	5.57E-05	4.15E-04	1.27E-09	379	9.37E-08	2.14E-04
BIP & AAA	15	66948951	68640917	2.27E-04	1.046	9.96E-05	4.72E-04	2.86E-09	789	2.18E-05	1.10E-02
BIP & AAA	15	78640760	79259009	1.71E-04	0.873	1.88E-04	2.03E-04	1.63E-09	202	2.41E-05	1.10E-02
BIP & AAA	19	10030690	11279257	2.63E-04	0.585	1.35E-04	1.49E-03	4.52E-09	482	9.23E-05	3.01E-02
BIP & AAA	22	43187900	43645335	1.21E-04	1.231	1.47E-05	6.53E-04	8.14E-10	257	2.31E-05	1.10E-02

459

460 **Figure Legend**

461

462 **Fig 1. An overview of study design**

463

464 **Fig 2. Global genetic correlation between mental disorders and abdominal aortic aneurysm.** LDSC, linkage
465 disequilibrium score regression; GNOVA, GeNetic cOVariance Analyzer; SCZ, schizophrenia; BIP, bipolar disorder;
466 *** indicates $p < 0.001$; ** indicates $p < 0.01$; * indicates $p < 0.05$; ns indicates no significance.

467

468 **Fig 3. ConjFDR Manhattan plots.** The red dashed line represents the threshold of p -value for conjFDR < 0.05,
469 and the black points are the independent SNPs; SCZ, schizophrenia; BIP, bipolar disorder; AAA, abdominal aortic
470 aneurysm.

471

472 **Fig 4. The univariate bidirectional causal inference between mental disorders and abdominal aortic**
473 **aneurysm.** MDD, major depression disorder; SCZ, schizophrenia; BIP, bipolar disorder; AAA, abdominal aortic
474 aneurysm.

475

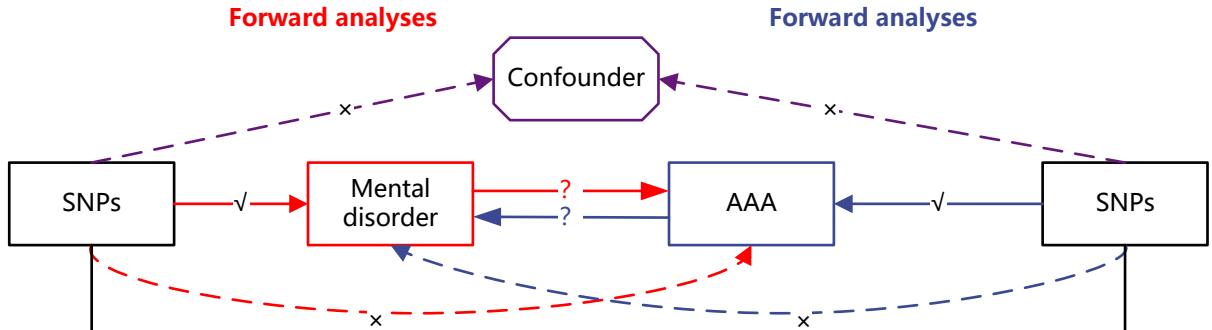
476 **Fig 5. Mediation effects of risk factors in the causal associations of abdominal aortic aneurysm with**
477 **depression and schizophrenia.** SNPs, single nucleotide polymorphisms; AAA, abdominal aortic aneurysm; CA,
478 coronary atherosclerosis.

Section 1: Genetic association

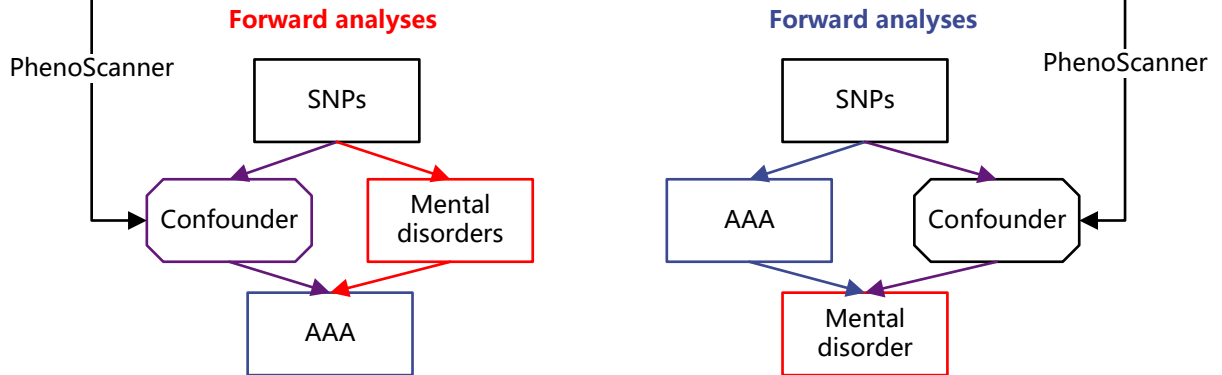
1. **Global correlation:** LDSC + GNOVA
2. **Local correlation:** SUPERGNOVA
3. **Shared loci:** ConjFDR

Section 2: Causal inference

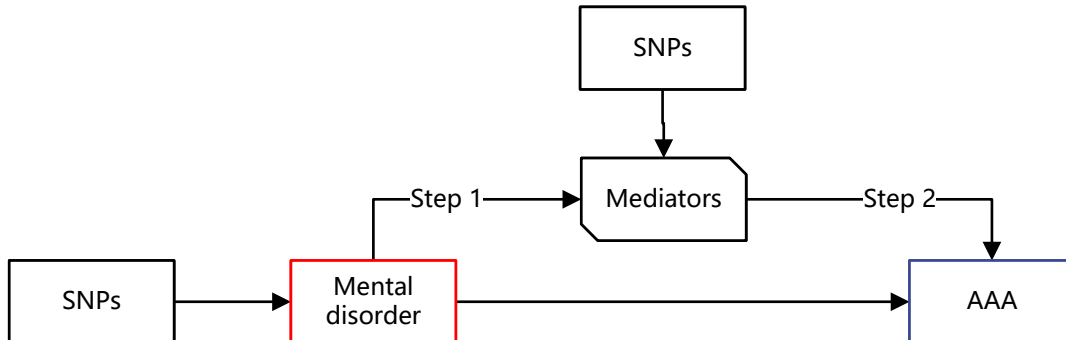
1. Univariable Mendelian Randomization

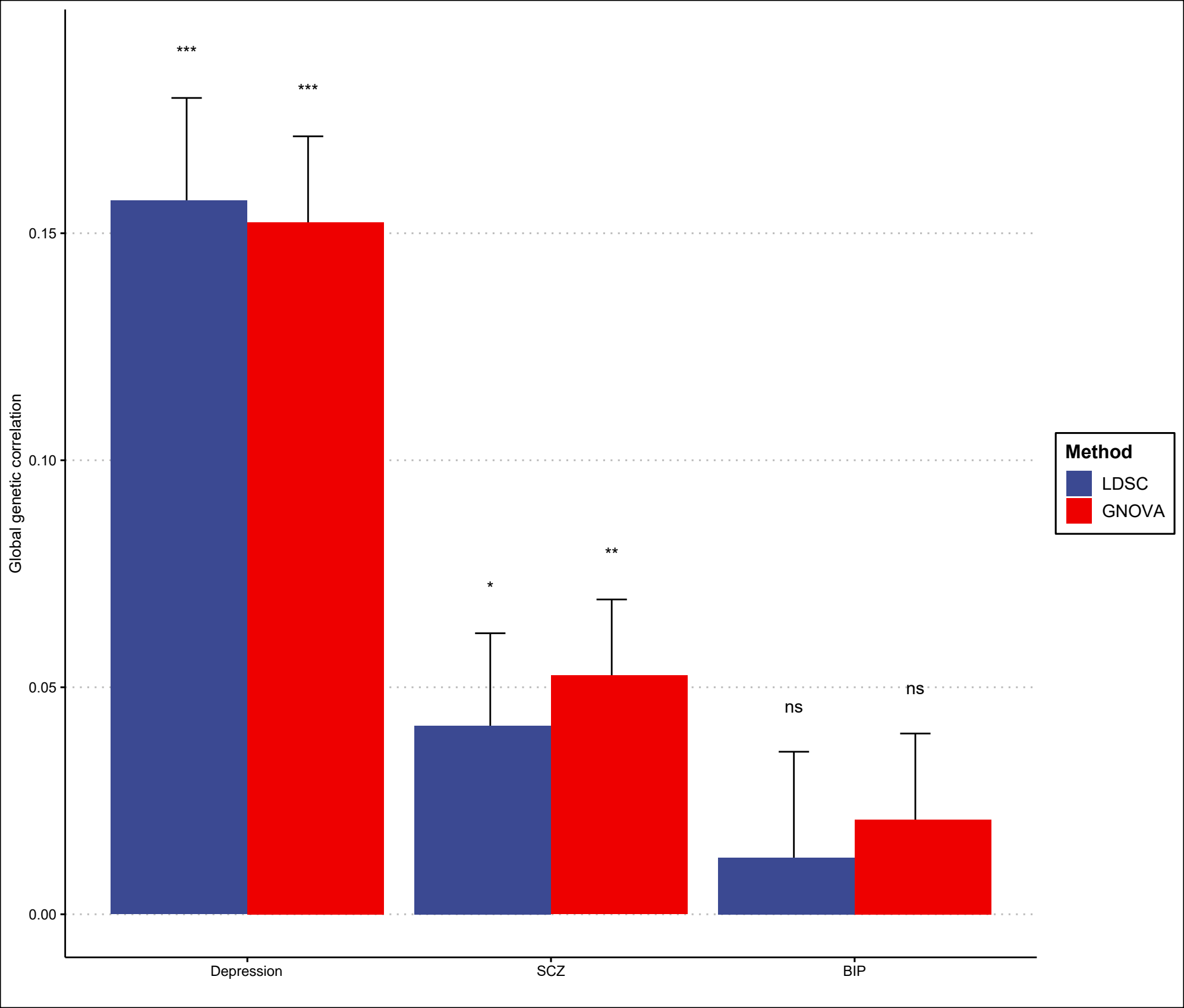


2. Multivariable Mendelian Randomization



3. Mediation Mendelian Randomization





Global genetic correlation

Depression

SCZ

BIP

Method

LDSC

GNOVA

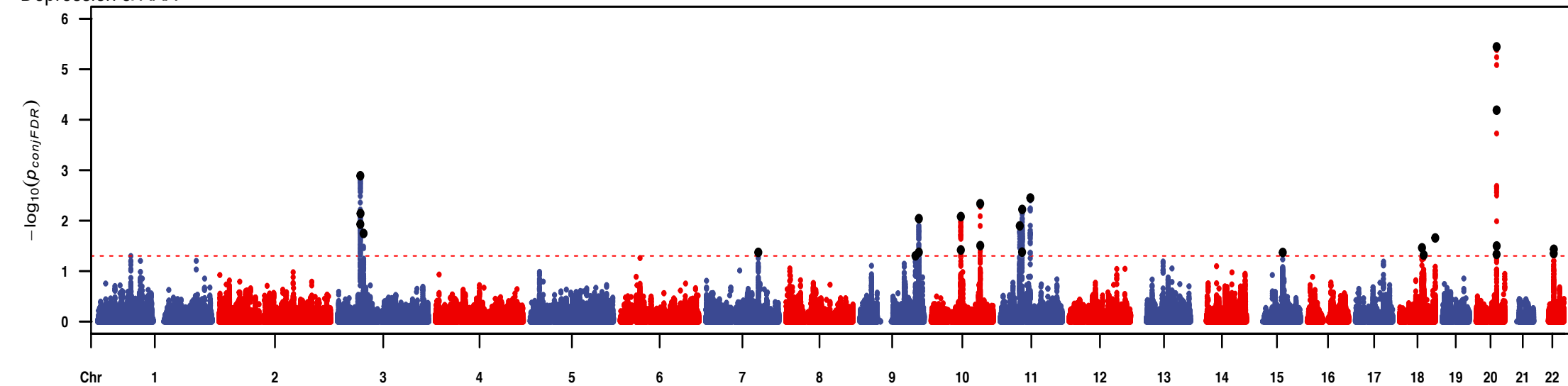
*

**

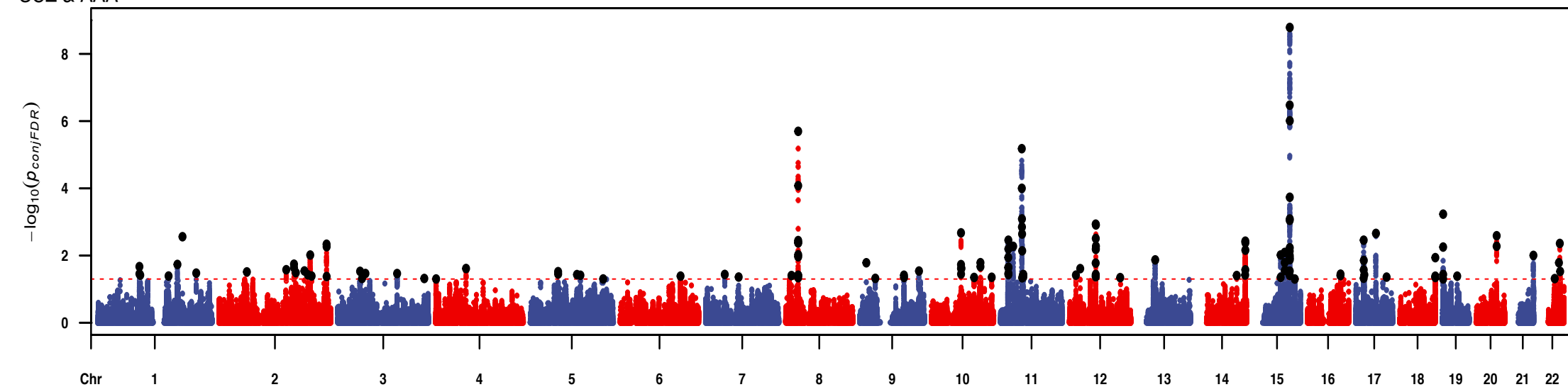
ns

ns

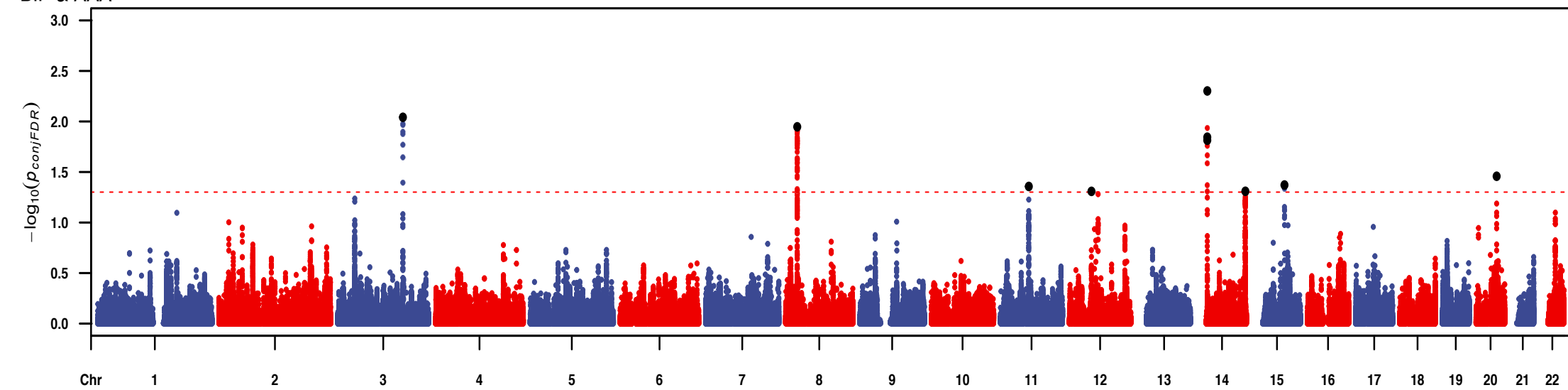
Depression & AAA



SCZ & AAA



BIP & AAA



Exposure	Outcome	Methods	OR (95% CI)	<i>p</i> -value		Cochran's Q	<i>p</i> value for heterogeneity* or pleiotropy†	
Forward analyses								
Depression	AAA	IVW	1.270 (1.071, 1.504)	0.006		163.448	<0.001	
		MR-Egger	0.865 (0.348, 2.149)	0.754	←→			0.404
		Weighted median	1.229 (1.063, 1.420)	0.005				
		MR-cML	1.184 (1.040, 1.349)	0.011				
		MR-RAPS	1.302 (1.190, 1.424)	<0.001				
SCZ	AAA	IVW	1.047 (1.010, 1.084)	0.011		333.578	<0.001	
		MR-Egger	1.018 (0.882, 1.174)	0.809	←→			0.692
		Weighted median	1.041 (1.002, 1.082)	0.041				
		MR-cML	1.041 (1.004, 1.079)	0.029				
		MR-RAPS	1.049 (1.025, 1.074)	<0.001				
BIP	AAA	IVW	0.980 (0.896, 1.071)	0.653	←→	32.604	0.002	
		MR-Egger	1.165 (0.656, 2.069)	0.601	←→			0.559
		Weighted median	1.024 (0.936, 1.121)	0.607				
		MR-cML	0.987 (0.915, 1.065)	0.737				
		MR-RAPS	0.978 (0.924, 1.035)	0.448				
Reverse analyses								
AAA	Depression	IVW	1.010 (0.995, 1.025)	0.190		183.629	<0.001	
		MR-Egger	1.006 (0.969, 1.046)	0.743				0.844
		Weighted median	1.001 (0.982, 1.020)	0.897				
		MR-cML	1.010 (0.995, 1.024)	0.187				
		MR-RAPS	1.010 (0.998, 1.022)	0.097				
AAA	SCZ	IVW	1.007 (0.968, 1.048)	0.740		328.312	<0.001	
		MR-Egger	0.989 (0.891, 1.096)	0.832	←→			0.711
		Weighted median	1.004 (0.962, 1.048)	0.843				
		MR-cML	0.985 (0.951, 1.020)	0.390				
		MR-RAPS	1.007 (0.983, 1.032)	0.562				
AAA	BIP	IVW	0.989 (0.944, 1.037)	0.646		183.276	<0.001	
		MR-Egger	1.005 (0.889, 1.137)	0.940	←→			0.786
		Weighted median	1.011 (0.950, 1.075)	0.735				
		MR-cML	0.991 (0.946, 1.039)	0.704				
		MR-RAPS	0.989 (0.952, 1.027)	0.560				

**p*-value for heterogeneity based on Cochran's Q statistic.

†*p*-value or pleiotropy based on MR-Egger regression intercept.

