

1 **Influenza vaccination allocation in tropical settings under constrained**  
2 **resources**

3  
4  
5 Joseph L Servadio<sup>1,2\*</sup>, Marc Choisy<sup>3,4</sup>, Pham Quang Thai<sup>5,6</sup>, Maciej F Boni<sup>1,2,4</sup>

6  
7  
8 <sup>1</sup>Center for Infectious Disease Dynamics and Department of Biology, Pennsylvania State  
9 University, University Park, PA, United States

10 <sup>2</sup>Department of Biology, Temple University, Philadelphia, PA, United States

11 <sup>3</sup>Oxford University Clinical Research Unit, Ho Chi Minh City, Vietnam

12 <sup>4</sup>Centre for Tropical Medicine and Global Health, Nuffield Department of Medicine,  
13 University of Oxford, Oxford, United Kingdom

14 <sup>5</sup>National Institute of Hygiene and Epidemiology, Hanoi, Vietnam

15 <sup>6</sup>School of Preventative Medicine and Public Health, Hanoi Medical University, Hanoi,  
16 Vietnam

17  
18 \*corresponding author: Joseph L Servadio, Department of Biology, Temple University,  
19 Philadelphia, PA, United States. [jlservadio@temple.edu](mailto:jlservadio@temple.edu)

20  
21  
22 **Keywords:** Influenza; Vaccination; Allocation; Vaccine Supply; Mathematical Model  
23

24 **Abstract**

25

26 Influenza virus seasonality, synchronicity, and vaccine supply differ substantially between  
27 temperate and tropical settings, and optimal vaccination strategy may differ on this basis.

28 Most national vaccine recommendations focus on high-risk groups, elderly populations, and  
29 healthcare workers despite previous analyses demonstrating broad benefits to vaccinating

30 younger high-contact age groups. Here, we parameterized an age-structured non-seasonal  
31 asynchronous epidemiological model of influenza virus transmission for a tropical low-

32 income setting. We evaluated timing and age allocation of vaccines across vaccine supplies

33 ranging from 10% to 90% using decade-based age groups. Year-round vaccination was

34 beneficial when comparing to vaccination strategies focused on a particular time of year.

35 When targeting a single age-group for vaccine prioritization, maximum vaccine allocation

36 to the 10-19 high-contact age group minimized annual influenza mortality for all but one

37 vaccine supply. When evaluating across all possible age allocations, optimal strategies

38 always allocated a plurality of vaccines to school-age children (10-19). The converse

39 however was not true as not all strategies allocating a plurality to children aged 10-19

40 minimized mortality. Allocating a high proportion of vaccine supply to the 10-19 age group

41 is necessary but not sufficient to minimize annual mortality as distribution of remaining

42 vaccine doses to other age groups also needs to be optimized. Strategies focusing on

43 indirect benefits (vaccinating children) showed higher variance in mortality outcomes than

44 strategies focusing on direct benefits (vaccinating the elderly). However, the indirect benefit

45 approaches showed lower mean mortality and lower minimum mortality than vaccination

46 focused on the elderly.

47

48 **Significance statement**

49

50 Influenza exhibits strong annual seasonality in temperate countries, but less consistent and  
51 predictable patterns in tropical countries. Many tropical countries are low-income  
52 countries with low influenza vaccine coverage. Globally, influenza vaccines are  
53 recommended for elderly adults and vulnerable groups, though evidence has shown that  
54 vaccinating school-age children is beneficial due to their high rates of social contact. Our  
55 modeling study evaluated whether age-based vaccine allocations can effectively minimize  
56 population influenza mortality in a tropical country with constrained resources and little  
57 seasonality. Prioritizing school-aged children for vaccination minimized mortality, with  
58 secondary emphasis on elderly adults. These benefits are most apparent under low vaccine  
59 supplies and can inform most effective ways to develop or expand influenza vaccination  
60 campaigns in low-income tropical settings.

61

## 62 **Introduction**

63  
64 Influenza remains a persistent public health challenge globally causing up to 650,000  
65 deaths annually [1]. It is present worldwide and prior to the emergence of SARS-CoV-2 was  
66 the most deadly infectious disease in many high-income [2–4] and some lower-income  
67 countries [5]. Morbidity and mortality from influenza can be mitigated through regular  
68 administration of vaccines. In high-income countries (HICs), between 28% and 42% of  
69 residents are vaccinated for influenza annually [6–8], primarily targeting elderly adults and  
70 those with underlying health conditions [9] with the majority of vaccines given prior to the  
71 onset of the winter influenza season. Most lower and lower-middle income countries  
72 (LMICs) have influenza vaccine coverage below 10% [10] with age/group targeting similar  
73 to higher income countries and no specific annual timing for vaccination campaigns.

74  
75 When introducing or increasing coverage of influenza vaccines in lower-income settings,  
76 three major differences in influenza epidemiology to consider between HICs and LMICs are  
77 that LMICs have younger populations, irregular and unpredictable seasonality of influenza  
78 (if they are tropical or sub-tropical), and lower vaccine supplies. Timing vaccination just  
79 prior to an epidemic is important due to evidence of waning of vaccine-induced protection  
80 over time [11,12], and optimizing age-specific allocation is critical for vaccine distribution  
81 as influenza transmission as well as morbidity and mortality vary with age. Countries with  
82 established influenza vaccination programs consistently encourage vaccination during a  
83 particular time of year and seek to optimize vaccine recommendations based on age,  
84 exposure, or vulnerability to maximize the vaccine rollout's mortality reductions. This  
85 planning is of course predicated on sufficient supply and population willingness to be  
86 vaccinated.

87  
88 Almost universally, emphasis is placed on vaccinating populations at highest risk of  
89 exposure or severe outcomes, including healthcare workers, young children, and elderly  
90 adults. This is seen across HICs and LMICs by promoting vaccination in particular high-risk  
91 groups as part of a general voluntary vaccination approach [13–18]. Prioritization based on

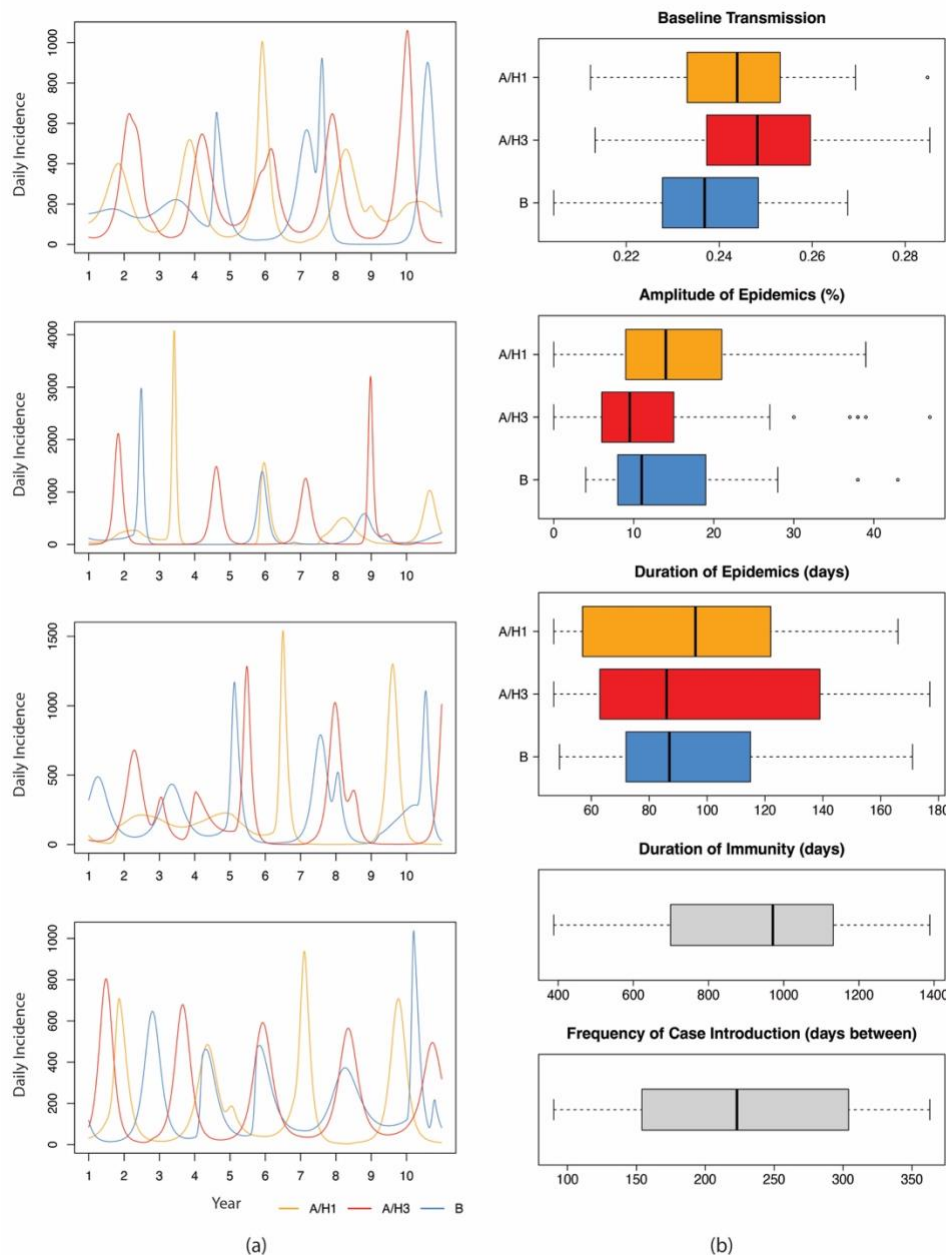
92 advanced age or health status was likewise reflected in COVID-19 vaccination rollouts in  
93 2021 [19,20]. However, compared to COVID-19, influenza has a shallower age-severity  
94 curve and vaccination approaches can be more flexibly designed to target different age  
95 groups based on both contact mixing and severity considerations. As an example, an  
96 alternate strategy that focuses influenza vaccination on school-age children – a group with  
97 high levels of in-group and out-group social contact – was followed in Japan in the 1970s  
98 and 1980s, with some evidence of success in reducing nationwide influenza mortality [21].  
99 Additional research from the United Kingdom found it to be a cost-effective method of  
100 reducing influenza mortality [22]. Other studies aiming to compare age-based vaccination  
101 strategies for influenza have typically found that vaccinating school-age children is  
102 advantageous due to their large contribution to transmission [23–29]. This choice between  
103 focusing vaccination on high-risk groups versus high-contact groups is a classic question in  
104 vaccine allocation for respiratory pathogens and depends strongly on overall transmission  
105 rate, the age-structure of the population and social contacts, and the age-morbidity  
106 association [30].

107  
108 In this study, we parameterized an age-structured mathematical model of influenza  
109 transmission to the asynchronous non-annual epidemiology of tropical influenza in  
110 Vietnam, where influenza vaccination is currently being planned. Vietnam’s high  
111 population, inconsistency of influenza epidemic timing, and presence of both subtropical  
112 and tropical climates make it a suitable case study where results may apply to other  
113 subtropical and tropical countries, particularly within southeast Asia. We evaluated vaccine  
114 allocations in this context to determine the optimal allocation of influenza vaccines to see if  
115 this differs from recommendations typical in temperate high-income settings.

## 116 117 **Results**

118  
119 The mathematical model developed in this study includes three (sub)types of influenza,  
120 decade-based age groups, and compartments for those who received an influenza vaccine  
121 (Supplemental text S1, Figure S1). Fifty parameterizations of this dynamic epidemiological  
122 model of tropical influenza transmission were generated that achieved (1) sustained co-

123 circulation of three influenza (sub)types: influenza A/H1N1, influenza A/H3N2, and  
124 influenza B; (2) non-damped oscillation of all three subtypes; (3) no synchronicity or  
125 phase-locking between any two subtypes; (4) stationary annual all-influenza attack rates  
126 between 15% and 35%; and (5) no clear dominance of any one subtype (Supplemental text  
127 S1). These dynamics are based on a well-characterized tropical influenza time series from  
128 Vietnam (4641 incidence data points over ten years). Across the fifty parameter scenarios,  
129 the median annual attack rate is 22.6% (IQR: 21.6-23.8%), and median annual mortality is  
130 15,499 deaths (IQR: 14,816-16,427) in a population of 100 million, with 46.6% (IQR: 46.2 –  
131 47.1) of deaths occurring in the 70+ age group and 30.9% (IQR: 30.8 – 31.0) occurring in  
132 the 60-69 age group. Adjusting for population, this is consistent with a relatively severe  
133 influenza season in the United States. Figure 1 shows examples of the simulated influenza  
134 scenarios in which we evaluated vaccine timings and age allocations as well as distributions  
135 of parameters among these 50 sets.  
136



137  
 138 Figure 1. Model parameterizations epidemiologically consistent with observed influenza  
 139 dynamics in Vietnam. (a) Four example model incidence trajectories, with daily incidence  
 140 values for influenza A/H1N1, A/H3N2, and B over a ten-year period. The parameterizations  
 141 leading to these trajectories were used in modeling to evaluate effectiveness of vaccination  
 142 strategies. (b) Distributions of the parameters comprising these parameter sets.

143  
 144  
 145 Some evidence was found for a preferred time of year for vaccinating. Among vaccine  
 146 programs spanning four months, changing the starting month reduced mortality by  
 147 between 219 (1.6%) and 1,089 (32.4%) deaths per year across seven vaccine supplies.

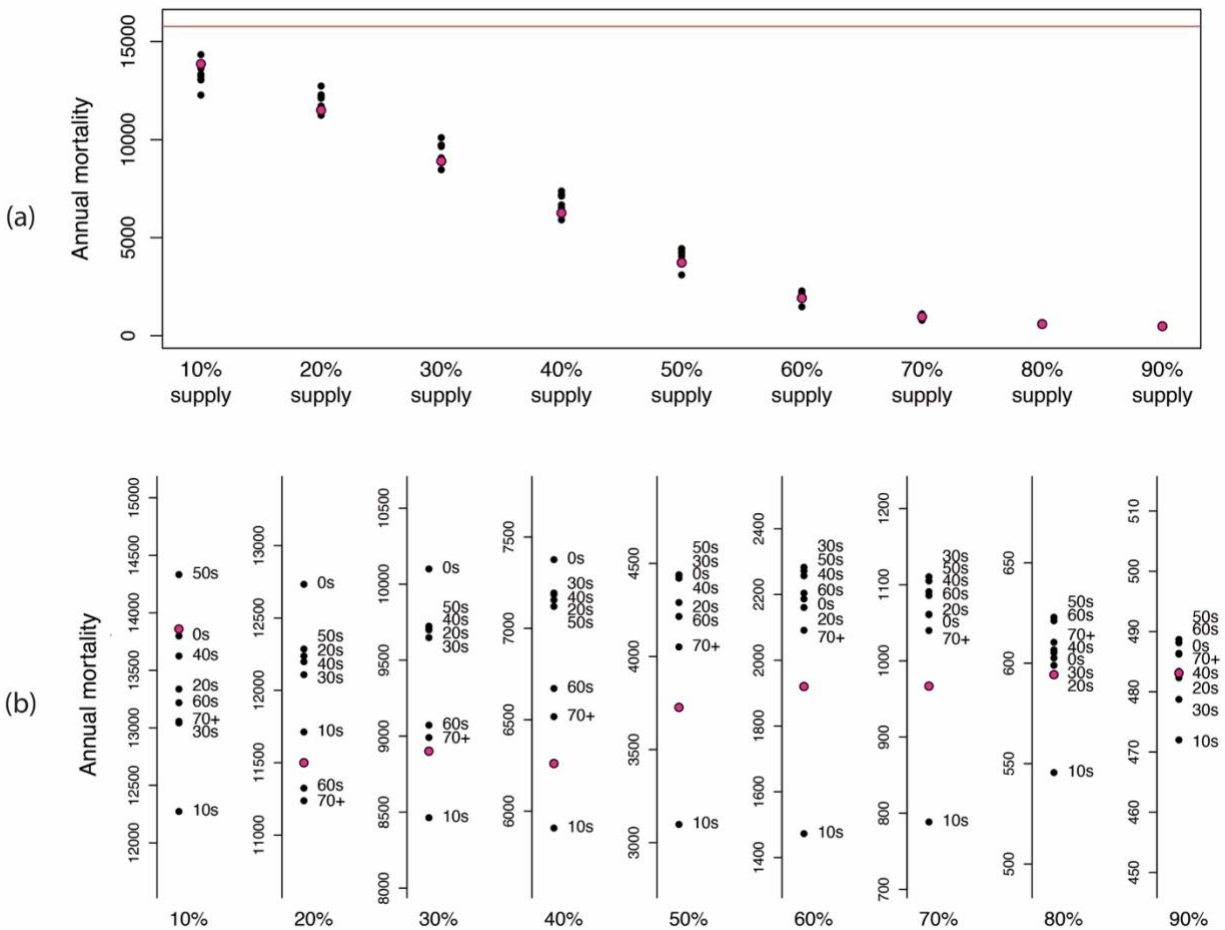
148 Larger differences were seen under higher vaccine supplies. The starting month minimizing  
149 mortality was January for all except one vaccine supply (40%), where February was the  
150 starting month minimizing mortality (Figure S2). Implementing a year-round vaccination  
151 strategy, however, led to the lowest average annual mortality; across vaccine supplies, a  
152 year-round vaccine campaign led to 0 to 7% fewer deaths than the 4-month vaccination  
153 campaign with lowest mortality. In all evaluated scenarios, increasing vaccine supply  
154 proved substantially more influential in reducing influenza mortality compared to aiming  
155 to vaccinate during a particular time of year.

156

157 When considering a single age-group prioritization scheme, our analysis shows benefits of  
158 targeting school-age children for reducing influenza mortality among all age groups in a  
159 population. Across different vaccine supplies, we allocated vaccines to a single age group  
160 until full coverage was achieved; remaining vaccines were allocated proportionally across  
161 the other seven age groups. For eight of the nine vaccine supplies, lowest population  
162 mortality was achieved by prioritizing the 10-19 age group (Figure 2). Prioritizing the two  
163 oldest age groups (60-69 and 70+) typically also led to higher reductions in mortality  
164 compared to other age group prioritizations, and prioritizing the 70+ age group produced  
165 the lowest average annual mortality for a vaccine supply that covered 20% of the  
166 population. Differences in mortality based on the age group prioritized is more pronounced  
167 under lower vaccine supplies; compared to age-proportional vaccination, prioritizing the  
168 10-19 age group leads to a reduction in mortality that ranges from 2.3% (20% supply) to  
169 23.3% (60% supply). This is consistent with the well-known trade-off in respiratory  
170 disease vaccine allocation where the two major approaches to reduce disease burden are  
171 (1) reducing severity directly by vaccinating high-risk/vulnerable groups, and (2) reducing  
172 severity indirectly by reducing overall incidence which is achieved by vaccinating high-  
173 contact groups.

174





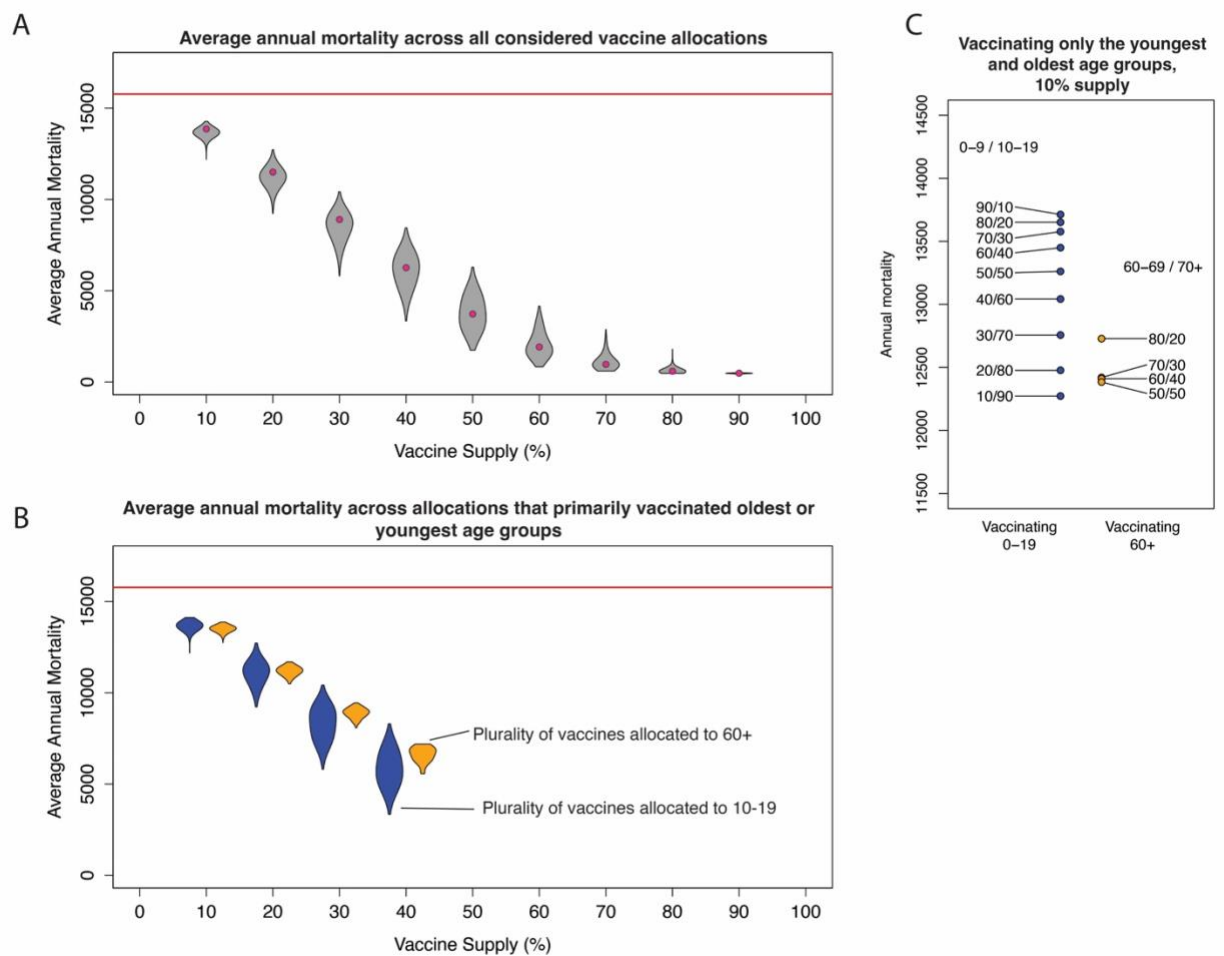
175  
 176 Figure 2. Expected annual mortality from prioritizing ten-year age bands (e.g. “20s” or  
 177 “50s”) for vaccination. Under varying vaccine supplies, one age group was vaccinated until  
 178 100% coverage was reached, and remaining doses were distributed proportionally to the  
 179 other seven age groups. Panel (a) shows eight black dots for the eight age-group  
 180 prioritizations and one red dot for age-proportional distribution. The red line indicates  
 181 mortality with no vaccination. Panel (b) shows zoomed-in and labeled mortality results for  
 182 better distinction across age groups.

183  
 184  
 185 Even though single-age prioritization is a natural point of focus and often a default strategy  
 186 considered in public health planning, allocating the vaccine supply to multiple key age  
 187 groups may achieve further reductions in burden. We evaluated precise vaccine allocations  
 188 across the eight age groups – 74,500 in total – chosen to approximate a brute-force  
 189 approach to covering all possible age-group coverage combinations via a modified Latin  
 190 Hypercube approach (see Methods and supplemental text S2). These evaluations show that  
 191 a substantial lowering (up to a factor of 2.0) of mortality can occur when finding an optimal

192 allocation for a given vaccine supply compared to a nonoptimal allocation. Figure 3 shows  
193 the distribution of annual mortality resulting from all tested allocations of vaccines for nine  
194 vaccine supplies. Greater benefits of age-specific allocation, when comparing to distributing  
195 vaccines proportionally across ages, are easily seen when vaccine supplies are low ( $\leq 50\%$   
196 supply). When comparing allocations that primarily vaccinate school-aged children (10-19)  
197 and the two oldest age groups (60+), primarily vaccinating younger children can lead to  
198 lower mortality, but with a wider range of possible mortality values (Figure 3b). This is  
199 seen further when examining the allocations that exclusively vaccinate either the two  
200 youngest or two oldest age groups for a vaccine supply available for 10% of the population  
201 (Figure 3c). Among the thirteen allocations exclusively vaccinating the oldest and youngest  
202 age groups, the lowest mortality is seen in one of the allocations exclusively vaccinating the  
203 two youngest age groups; however, all of the allocations exclusively vaccinating the oldest  
204 age groups lead to close-to-optimal low mortality due to the low variance of mortality  
205 outcomes when vaccination strategy aims for direct benefits over indirect benefits.

206

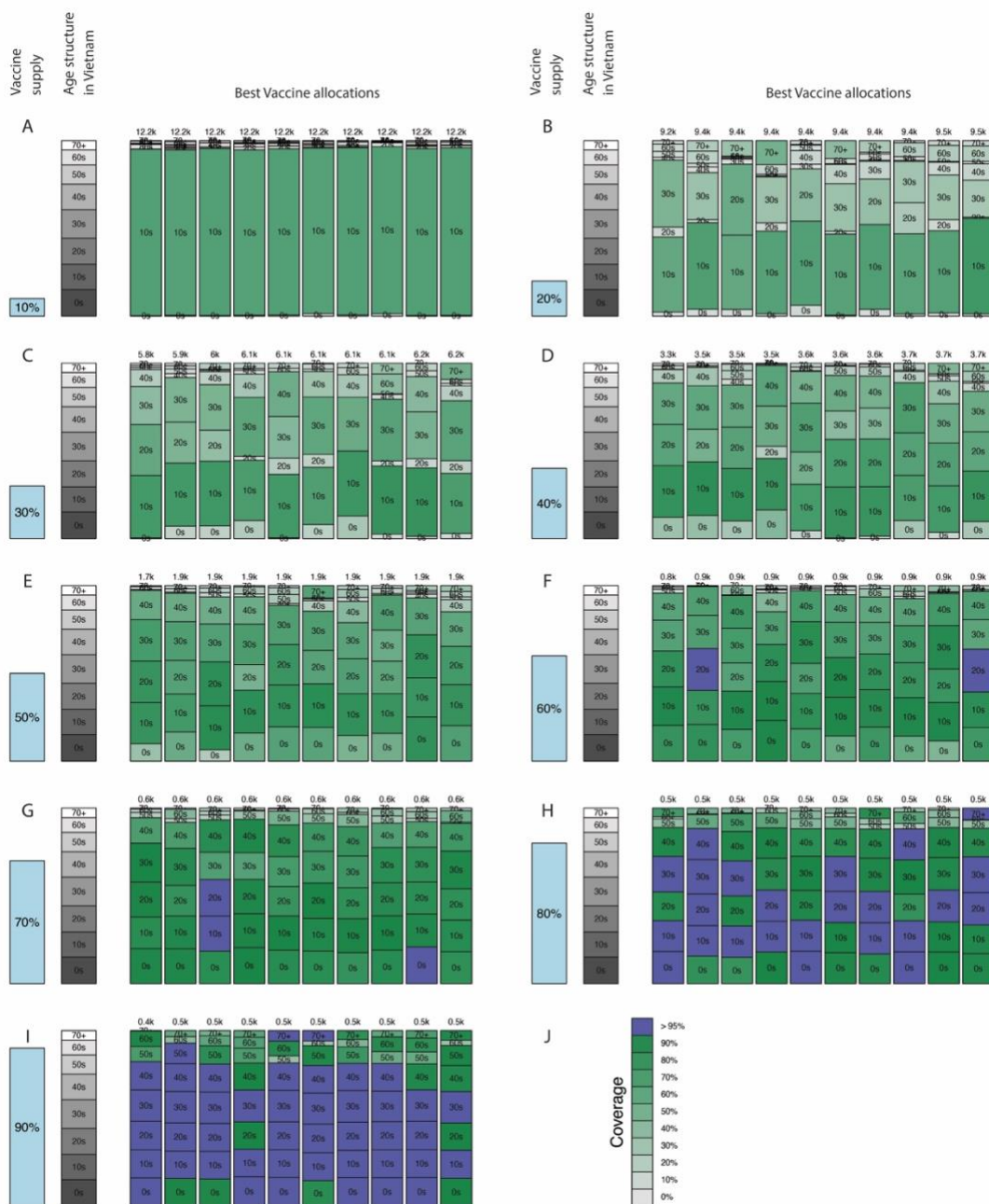
207



208  
 209 Figure 3. Mortality under various vaccine supplies and allocations. (a) Mortality among all  
 210 considered vaccine allocations (N = 74500) for vaccine supplies for 10-90% of the  
 211 population. Red points within the violin plots represent mortality if vaccines are allocated  
 212 across age groups proportionally. (b) Mortality among the subsets of allocations  
 213 represented in (a) that reserve the largest portion of vaccines for the 10-19 age group  
 214 (blue) or two oldest age groups (orange). No vaccine allocations exist allocating a plurality  
 215 of vaccines to the 60-69 or 70+ age groups when vaccine supply exceeds 40%. (c) Mortality  
 216 under a vaccine supply for 10% of the population that exclusively vaccinates the two  
 217 youngest age groups (left, blue) and two oldest age groups (right, orange). The percentage  
 218 of vaccines allocated to the 0-9/10-19 age group as well as the percentage allocated to the  
 219 60-69/70+ age groups are indicated next to each point.

220  
 221  
 222 The vaccine allocations that best reduce mortality differ by vaccine supply, as shown in  
 223 Figure 4. Under the lowest vaccine supplies, allocations that primarily focus on school-age  
 224 children (10-19) were most effective, with some inclusion of elderly adults (70+) and adults  
 225 of working age (20-39). These age groups represent those most likely to experience

226 influenza mortality and those who have high degrees of social mixing within the  
 227 population. Under more moderate vaccine supplies (available for 30-50% of the  
 228 population), primarily vaccinating individuals between 10 and 49, largely representing  
 229 school-age children and working adults, proved most effective. For vaccine allocations  
 230 greater than 60%, vaccine allocations leading to the greatest reduction in mortality more  
 231 closely resembled those proportional to the population age structure (Figure 4).  
 232



233

234 Figure 4. Optimal vaccine age-allocations across various vaccine supplies shown in panels  
235 A-I. In each panel, the light blue bar representing vaccine supply is shown next to the  
236 population age distribution, showing the relative sizes of the vaccine supply and population  
237 age groups. The ten blue/green bars on the right of each panel show the ten age allocations  
238 that minimize mortality, ranked from left to right by average annual total mortality. Annual  
239 mortality numbers for each allocation are shown at the top of each column. Blue age  
240 allocation boxes indicate vaccine coverage above 95% for that age group; age group  
241 coverage for green boxes corresponds to the color bar in panel J.

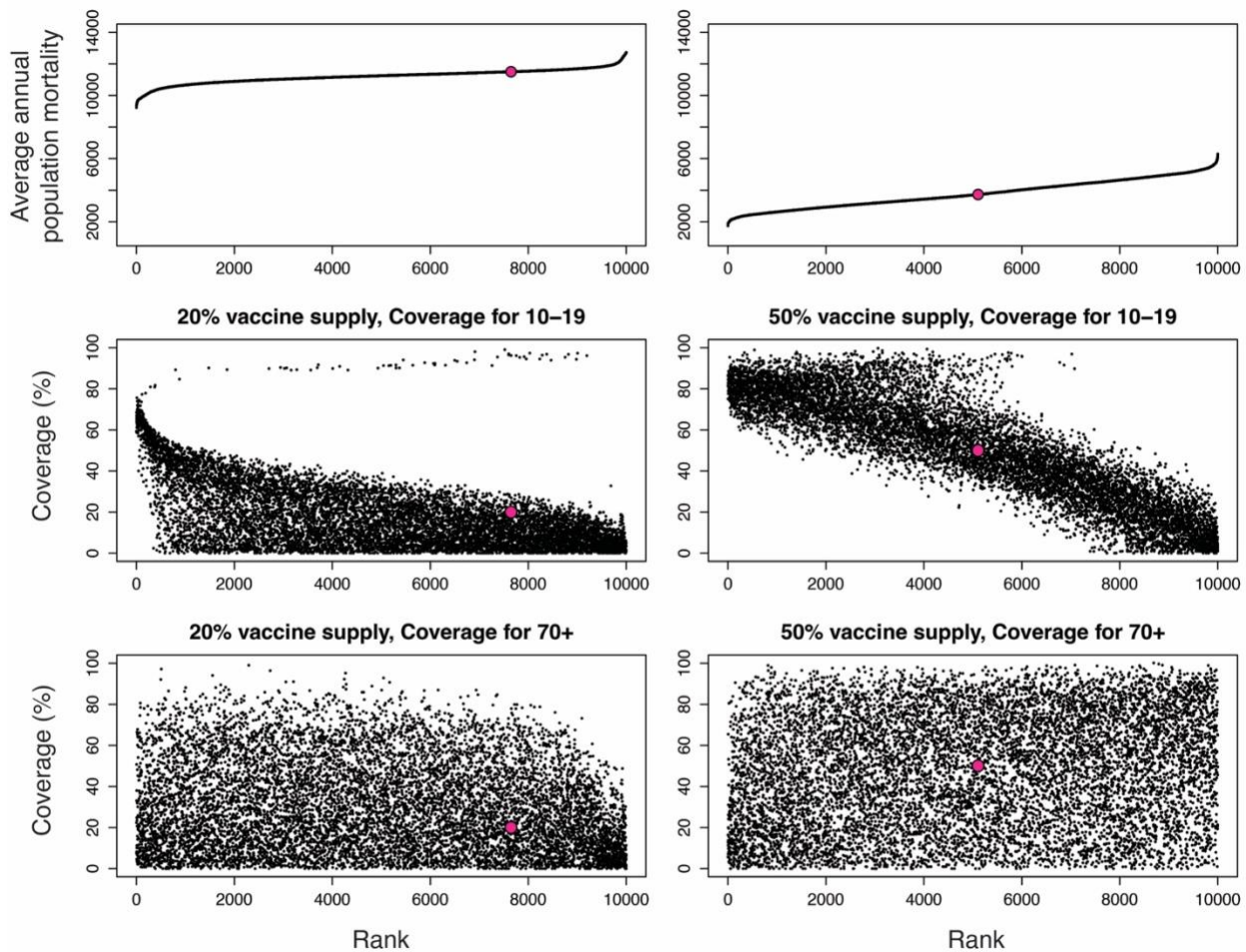
242  
243

244 Prioritizing school-age children is necessary but not sufficient for minimizing mortality,  
245 particularly at low vaccine supplies. Among the vaccine allocations that prioritize school-  
246 age children, the vaccine distribution among the remaining doses across the other seven  
247 age groups can lead to notable differences in mortality. There are no straightforward  
248 monotonic relationships between age-group vaccine allocation and population mortality as  
249 can be seen clearly in Figure 5. Allocations achieving high vaccine coverage in the 10-19 age  
250 group need to also distribute adequate doses to adults 60+ to minimize mortality. This new  
251 finding on sufficiency of a certain age-group focus in vaccination programs – along with the  
252 wider variance in mortality when prioritizing school aged children – shows the importance  
253 of proper planning for allocating the entire vaccine supply.

254  
255



256



257

258 Figure 5. Vaccination coverages in two age groups (10-19, 70+) across all considered  
259 allocations of two vaccine supplies (20%, 50%), ranked by average annual population  
260 mortality. Red dots in each panel indicate the allocations with proportional vaccination  
261 across all age groups. Top row: Average annual mortality for each allocation. Middle row:  
262 Vaccination coverages for the 10-19 age group among the ranked allocations. The general  
263 downward slope shows the importance of vaccinating this age group for reducing  
264 population mortality, but the low rank of many allocations with high coverage for this age  
265 group with 20% supply (left) show that saturating this age group and leaving others  
266 unvaccinated is not guaranteed to be optimal. Bottom row: Vaccination coverages for the  
267 70+ age group among ranked allocations. Full results, across all vaccine supplies and all age  
268 groups, are shown in Figure S3.

269

270

271 Our analyses assumed the effectiveness of influenza vaccines and duration of vaccine-  
272 induced immunity consistent with previous literature [31–36]. We repeated our analyses

273 varying each of these to determine whether the vaccine allocations minimizing mortality  
274 change with different effectiveness values or immune durations (full details in  
275 Supplemental text S3). If vaccine effectiveness is reduced from 50% to 40% or 30%,  
276 targeting elderly adults typically led to lowest annual mortality values, particularly when  
277 vaccine supplies are lower. This suggests a new efficacy-dependent allocation that would  
278 need to be validated: majority allocation to older age groups during strain-mismatch years  
279 and majority allocation to younger age groups during other years. Under increased vaccine  
280 effectiveness, prioritizing school-age children remained advantageous for minimizing  
281 mortality (Figures S4 and S5). Similarly, reducing the assumed 9-month average duration of  
282 immunity to 6 to 7 months shifted the optimum vaccination strategy to one that prioritizes  
283 elderly adults while increasing immune duration in the model kept school-age children as  
284 the key group for prioritization (Figures S6 and S7). We also examined changes in age  
285 structure, comparing the age structures of Vietnam, the United States, and intermediate age  
286 structures. The benefits of primarily vaccinating the 10-19 age group, particularly at low  
287 vaccine supplies, were seen across all five age structures (Figures S8, S9), indicating that  
288 age-structure differences in HICs and LMICs should not have a substantial effect on the  
289 choice of optimal vaccine policy.

290

## 291 **Discussion**

292

293 This study aimed to identify vaccine distribution strategies that most effectively reduce  
294 annual mortality in the absence of annual seasonality. This absence of seasonality is most  
295 typically seen in tropical countries, many of which are LMICs with currently low vaccine  
296 coverage. We used influenza dynamics from Vietnam to inform a non-seasonal  
297 asynchronous influenza model and evaluated various vaccine allocations under different  
298 supply constraints, resembling the development or expansion of a national vaccine  
299 program. A clear time of year was not identified that would most effectively reduce  
300 influenza mortality, and age-structure difference between tropical and temperate settings  
301 did not seem to influence vaccine policy choice. Age-based allocations that prioritize  
302 school-aged children were most effective at reducing overall mortality, and benefits of  
303 vaccinating working-age adults and elderly adults were also seen (Figure 4). The benefits of

304 prioritizing particular age groups are most prominent when vaccine supplies are low,  
305 emphasizing their importance when first establishing a vaccine program. Under higher  
306 vaccine supply, allocating vaccines proportionally across age groups is an adequate burden  
307 reduction approach. Our finding of the advantages in prioritizing school-age children differs  
308 from the typical recommendations that prioritize elderly adults but is consistent with  
309 previous studies [24,25,37].

310  
311 Strategies that led to the greatest reduction in mortality included vaccinating school-aged  
312 children and elderly adults, the groups with the highest social mixing in the population  
313 [38,39] and mortality risk [40,41], respectively. Children have also previously been found to  
314 have higher observed influenza incidence [42]. The benefits of prioritizing these two  
315 groups rather than allocating vaccines proportionally are greatest when considering the  
316 lowest vaccine supply (available for 10% of the population). Vaccinating working-age  
317 adults, particularly those aged 30-39, was also beneficial under lower vaccine supplies,  
318 which is supported by previous literature [24]. The benefits of prioritizing school-aged  
319 children depended on factors such as vaccine supply, vaccine effectiveness, and average  
320 duration of vaccine-inferred immunity. Decreasing vaccine effectiveness or duration of  
321 vaccine-induced immunity, led to strategies that favor primarily vaccinating elderly adults  
322 being the most effective (Figures S4-S7). Because vaccine effectiveness can fluctuate across  
323 years, it is possible that the optimal age-based strategies will vary across years.

324  
325 The World Health Organization's position on influenza vaccination emphasizes annual  
326 vaccination for elderly adults because they are at the highest risk of death [43,44]. Some  
327 previous studies regarding vaccine strategies have also found that prioritizing elderly  
328 adults is most beneficial for both influenza [45] and COVID-19 [46]. Other studies, however,  
329 have considered the benefits of prioritizing school-age children based on their high level of  
330 social mixing both within and outside of their age group [47]. A study from the United  
331 Kingdom found vaccinating children to be of greater overall benefit, with reallocating  
332 vaccines to elderly adults being less cost effective [22]. The decision in practice to not focus  
333 vaccination on school-age children may result from increased barriers to uptake such as



334 inconvenience, complacency, unawareness of the magnitude of benefit, or perceptions of  
335 influenza-associated risk [48,49].

336  
337 Vaccine supply – a variable that is not considered in optimal allocation problems in  
338 wealthier countries – plays a critical role in determining optimal allocation in a resource-  
339 constrained setting. We focused on supply to consider the development of a vaccine  
340 program in a tropical country that currently does not currently achieve high vaccination  
341 coverage, such as Vietnam. Most previous studies examining effective ways to vaccinate a  
342 population for influenza or other respiratory viruses primarily investigate population  
343 coverage [50,51] or distribution of a fixed supply [25,52], with some giving attention to  
344 vaccine supply [24,46,53]. By considering how to allocate among nine vaccine supplies, our  
345 results are more applicable to policy makers and health professionals, showing how  
346 optimal allocations can differ across supply levels (Figure 4). We assume perfect adherence  
347 to each allocation. In practice however, some allocations may be less feasible due to age-  
348 differentiated willingness to be vaccinated or access to vaccination (such as ease of  
349 vaccinating in a school setting compared to visiting a clinic for vaccination).

350  
351 In the context of an existing, but limited, vaccine program, an open question in optimal  
352 vaccine allocations is how to most effectively use an expanding vaccine supply. By  
353 examining a broad range of vaccine supplies, we showed how optimal allocations change  
354 when establishing a small vaccine program and then when expanding a current program.  
355 When developing a program in a tropical country, our results support primarily allocating a  
356 very limited supply to school-age children and elderly adults. Under more moderate  
357 supplies, it is beneficial to include working-age adults. At the highest supply levels, it is  
358 sufficient to vaccinate proportionally across age groups, with less benefits from opting for  
359 an age-based allocation.

360  
361 Our model accounts for age-based influenza dynamics but does not consider differences  
362 across locations. These can include asynchronous influenza epidemics among northern,  
363 central, and southern Vietnam [54] or differences in vaccine coverage between urban and  
364 rural communities [55]. Our model also only considers age for both hospitalization and

365 mortality risk as well as for vaccine priorities. Differences in severity have been seen based  
366 on sex [56], and other groups that may benefit from vaccine prioritization include  
367 healthcare workers (recommended in Vietnam [57]) and people with underlying health  
368 conditions [58]. Additional simplifying assumptions were made regarding vaccine-induced  
369 immunity. By having a single set of vaccine compartments, we assumed that all protection is  
370 lost after vaccine immunity wanes, though immunity may wane only partially over time  
371 [59,60]. We also assumed uniform vaccine effectiveness for all age groups. There is  
372 evidence of lower vaccine effectiveness among elderly populations [61], though this finding  
373 is not universal [62]; therefore, our analysis may be overestimating the benefits of  
374 vaccinating to elderly adults.

375  
376 Few models exist for tropical influenza circulation with coexistence of distinct types and  
377 subtypes [63]. As a result, we used a model with 50 parameterizations that reflect influenza  
378 dynamics in Vietnam and can account for uncertainty in some parameters [25]. In our  
379 analysis, prioritizing school-age children for annual influenza vaccination leads to the  
380 greatest reductions in annual mortality in the implementation of a newly expanded vaccine  
381 program. Characteristics of the vaccine, notably its average duration of inferred immunity  
382 and efficacy, may impact how to allocate vaccines in a way that minimizes mortality,  
383 particularly under low vaccine supplies. These findings are likely to be of interest to many  
384 tropical countries that experience irregular timing of influenza epidemics and with plans to  
385 increase currently low influenza vaccine coverage.

386

## 387 **Methods and Materials**

388

389 This study focuses on vaccine strategies in Vietnam, a LMIC with a population of  
390 approximately 100 million. Vietnam has a subtropical climate in the northern half of the  
391 country and a tropical climate in the southern half. Previous research has not identified  
392 strong predictable cycles in influenza incidence for any (sub)type in any of northern,  
393 central, or southern Vietnam [54]. Vietnam currently has low influenza vaccine coverage,  
394 but there is interest in expanding coverage.

395

396 *Mathematical model*

397

398 Since only one known model exists that fits three co-circulating (sub)types of influenza in a  
399 tropical region [63], we adapted our previous mathematical model, which was fit for a  
400 single nonannual pathogen [54], to match the circulation patterns of multiple types and  
401 subtypes of influenza, using fifty separate parameterizations for robustness. In our adapted  
402 model, each (sub)type follows SIRS dynamics with a two-stage infected class and a four-  
403 stage recovered class [64]. (Figure S1, text S1). Periods of increased transmission occur  
404 irregularly, with intervals between periods of increased transmission drawn stochastically  
405 from a previously fit normal distribution of epidemic timings from ten years of sentinel  
406 surveillance from fifteen hospitals located throughout Vietnam [54]. We incorporated  
407 previously estimated levels of cross-immunity among (sub)types [63]. Single cases are  
408 moved from the Susceptible class to an Infected class at regular intervals to represent case  
409 importation. Hospitalization can occur during infection, using a hospitalization fraction  
410 based on data from the US Centers for Disease Control and Prevention (CDC) [65]. Death  
411 occurs from the hospital at a rate based on CDC data [65].

412

413 We divided the population into eight decade-based age groups, with the last group  
414 consisting of adults 70 years and older, using published age demographics in Vietnam [66].  
415 We incorporated a crude birth rate as reported by the World Bank [67] and an age-based  
416 natural death rate as reported by the World Health Organization [68]. Age-based contact  
417 mixing was incorporated in the model by using previously estimated age-based contact  
418 patterns for Vietnam [69,70].

419

420 To ensure that our model allows all three (sub)types of influenza to co-circulate with  
421 asynchronous behavior, we parameterized the model using known epidemiological  
422 quantities in Vietnam such as annual attack rate and variance in timings between epidemic  
423 peaks. Using a standard parameter-space search approach, we drew sets of parameters  
424 from uniform distributions and retained 50 sets that produced model dynamics resembling  
425 those seen in Vietnam, allowing asynchronous nonannual co-circulation of the three

426 (sub)types. Parameter values from literature are listed in Table S1 and full details of the  
427 parameter-space search can be found in Supplemental text S1.

428

#### 429 *Vaccine implementation*

430

431 Our model allows vaccination from the Susceptible and Recovered compartments (Figure  
432 S1). We applied vaccine strategies to the specified model, running the model for a 10-year  
433 period and using average annual mortality over the ten years to compare effectiveness of  
434 each. We organized our analyses around the central variable of vaccine supply and how best  
435 to allocate vaccines given supply constraints, considering supply relative to the population.  
436 A 10% vaccine supply, therefore, is interpreted as having enough doses to vaccinate 10% of  
437 the population. We considered vaccine supplies that cover 10% through 90% of the  
438 population. The first vaccine strategies investigated whether administering vaccines during  
439 a particular time of year would lead to the greatest reduction in average annual mortality.  
440 In these scenarios, vaccines were assumed to be distributed proportionally across all age  
441 groups within the population. We considered each calendar month as a starting point for  
442 vaccine administration, and we considered vaccine administration durations of one through  
443 four months. Additionally, we considered a scenario where vaccines are evenly distributed  
444 to the population throughout the entire year.

445

446 The second set of vaccination scenarios considered prioritizing single age groups. For each  
447 of the nine specified vaccine supplies, we considered prioritizing each age group by  
448 vaccinating all members of that age group until 100% coverage is reached. The remaining  
449 vaccines were then distributed to the remaining seven age groups proportionally to their  
450 respective sizes.

451

452 The final set of vaccination scenarios considered ways to allocate all available doses across  
453 all eight age groups rather than prioritizing one age group. In other words, we performed –  
454 as completely as possible given computational limitations – a brute-force search over all  
455 possible age-allocations. The purpose of this was to find previously unexamined optimal  
456 ways to distribute or allocate available vaccines to the eight age groups. Full details of

457 developing these allocations can be found in supplemental text S2. Briefly, for each vaccine  
458 supply, we sampled proportions (in  $[0, 1]$ ) in each age group for an assigned vaccine  
459 coverage and applied them to our model to evaluate mortality. We drew allocations, in the  
460 form of sets of eight coverages, using Latin hypercube sampling, with (1) a rejection  
461 mechanism for allocations that require major rescaling, and (2) an added constraint to  
462 ensure that >95% coverages for individual age groups were achieved in the sampling. We  
463 drew 10,000 allocations for supplies ranging between 10 and 60 percent of the population  
464 and then 7500, 5000, and 2000 allocations for 70, 80, and 90 percent supplies, respectively,  
465 since fewer feasible allocations exist at those high coverages. Each allocation was evaluated  
466 for each of the 50 epidemiologically consistent parameter sets for Vietnam, and we  
467 averaged the results across parameter sets for each allocation. We also considered an  
468 allocation where doses are distributed proportionally to the relative sizes of age groups to  
469 compare specific age-based vaccine allocations to naively distributing vaccines uniformly  
470 throughout the entire population.

471

472 All analyses were run in R version 4.2.1 [71]. We used the 'Rcpp' package [72] for coding  
473 and implementing the model, the 'lhs' package [73] for Latin Hypercube Sampling, and the  
474 'parallel' package for computational efficiency.

475

476

477 **Funding**

478

479 This study was funded by the National Institutes of Health grant F32AI167600. The funders  
480 had no role in the study design, data collection and analysis, decision to publish, or  
481 preparation of the manuscript.

482

483

484 **Data Availability**

485

486 Data generated in this study and relevant code are available at  
487 [github.com/jlservadio/VN\\_Influenza\\_Vaccination](https://github.com/jlservadio/VN_Influenza_Vaccination)

488

## 489 **References**

490

491 1. Iuliano AD, Roguski KM, Chang HH, Muscatello DJ, Palekar R, Tempia S, et al. Estimates of  
492 global seasonal influenza-associated respiratory mortality: a modelling study. *The Lancet*.  
493 2018 Mar 31;391(10127):1285–300.

494 2. Heron M. Deaths: Leading Causes for 2019. *Natl Vital Stat Rep* [Internet]. 2021 Jul 26;70(9).  
495 Available from: <https://www.cdc.gov/nchs/data/nvsr/nvsr70/nvsr70-09-508.pdf>

496 3. Choe YJ, Choe SA, Cho SI. Trends in Infectious Disease Mortality, South Korea, 1983–2015.  
497 *Emerg Infect Dis*. 2018 Feb;24(2):320–7.

498 4. Johnson SC, Cunningham M, Dippenaar IN, Sharara F, Wool EE, Agesa KM, et al. Public  
499 health utility of cause of death data: applying empirical algorithms to improve data quality.  
500 *BMC Med Inform Decis Mak*. 2021 Jun 2;21(1):175.

501 5. World Health Organization. Global health estimates: Leading causes of death [Internet].  
502 [cited 2023 Jul 18]. Available from: [https://www.who.int/data/gho/data/themes/mortality-](https://www.who.int/data/gho/data/themes/mortality-and-global-health-estimates/ghe-leading-causes-of-death)  
503 [and-global-health-estimates/ghe-leading-causes-of-death](https://www.who.int/data/gho/data/themes/mortality-and-global-health-estimates/ghe-leading-causes-of-death)

504 6. Centers for Disease Control and Prevention. Flu Vaccination Coverage, United States, 2018–  
505 19 Influenza Season [Internet]. 2022 [cited 2023 Jul 18]. Available from:  
506 <https://www.cdc.gov/flu/fluview/coverage-1819estimates.htm>

507 7. Isenor JE, Alia TA, Killen JL, Billard BA, Halperin BA, Slayter KL, et al. Impact of pharmacists as  
508 immunizers on influenza vaccination coverage in Nova Scotia, Canada. *Hum Vaccines*  
509 *Immunother*. 2016 Feb 10;12(5):1225–8.

510 8. Böhmer MM, Walter D, Müters S, Krause G, Wichmann O. Seasonal influenza vaccine uptake  
511 in Germany 2007/2008 and 2008/2009: results from a national health update survey.  
512 *Vaccine*. 2011 Jun 15;29(27):4492–8.

513 9. Heins M, Hooiveld M, Korevaar J. Vaccine Coverage Dutch National Influenza Prevention  
514 Program 2020: brief monitor [Internet]. Utrecht: Nivel; 2021. Available from:  
515 [https://www.nivel.nl/en/publicatie/vaccine-coverage-dutch-national-influenza-prevention-](https://www.nivel.nl/en/publicatie/vaccine-coverage-dutch-national-influenza-prevention-program-2020-brief-monitor)  
516 [program-2020-brief-monitor](https://www.nivel.nl/en/publicatie/vaccine-coverage-dutch-national-influenza-prevention-program-2020-brief-monitor)

517 10. Palache A, Abelin A, Hollingsworth R, Cracknell W, Jacobs C, Tsai T, et al. Survey of  
518 distribution of seasonal influenza vaccine doses in 201 countries (2004–2015): The 2003  
519 World Health Assembly resolution on seasonal influenza vaccination coverage and the 2009  
520 influenza pandemic have had very little impact on improving influenza control and  
521 pandemic preparedness. *Vaccine*. 2017 Aug 24;35(36):4681–6.

- 522 11. Young B, Sadarangani S, Jiang L, Wilder-Smith A, Chen MIC. Duration of Influenza Vaccine  
523 Effectiveness: A Systematic Review, Meta-analysis, and Meta-regression of Test-Negative  
524 Design Case-Control Studies. *J Infect Dis*. 2018 Feb 14;217(5):731–41.
- 525 12. Young BE, Chen M. Influenza in temperate and tropical Asia: a review of epidemiology and  
526 vaccinology. *Hum Vaccines Immunother*. 16(7):1659–67.
- 527 13. Grohskopf LA, Blanton LH, Ferdinands JM, Chung JR, Broder KR, Talbot HK, et al. Prevention  
528 and Control of Seasonal Influenza with Vaccines: Recommendations of the Advisory  
529 Committee on Immunization Practices — United States, 2022–23 Influenza Season. *MMWR*  
530 *Recomm Rep*. 2022 Aug 26;71(1):1–28.
- 531 14. Gupta V, Dawood FS, Muangchana C, Lan PT, Xeuatvongsa A, Sovann L, et al. Influenza  
532 Vaccination Guidelines and Vaccine Sales in Southeast Asia: 2008–2011. *PLOS ONE*. 2012  
533 Dec 21;7(12):e52842.
- 534 15. Centers for Disease Control and Prevention. Flu Symptoms & Complications [Internet].  
535 Centers for Disease Control and Prevention. 2022 [cited 2023 Aug 3]. Available from:  
536 <https://www.cdc.gov/flu/symptoms/symptoms.htm>
- 537 16. Oakley S, Bouchet J, Costello P, Parker J. Influenza vaccine uptake among at-risk adults (aged  
538 16–64 years) in the UK: a retrospective database analysis. *BMC Public Health*. 2021 Sep  
539 24;21:1734.
- 540 17. Members of the Western Pacific Region Global Influenza Surveillance Response System,  
541 Dwyer D, Barr I, Hurt A, Kelso A, Reading P, et al. Seasonal influenza vaccine policies,  
542 recommendations and use in the World Health Organization’s Western Pacific Region. *West*  
543 *Pac Surveill Response J WPSAR*. 2013;4(3):51–9.
- 544 18. Mertz D, Kim TH, Johnstone J, Lam PP, Science M, Kuster SP, et al. Populations at risk for  
545 severe or complicated influenza illness: systematic review and meta-analysis. *The BMJ*. 2013  
546 Aug 23;347:f5061.
- 547 19. World Health Organization. Global COVID-19 Vaccination Strategy in a Changing World: July  
548 2022 update [Internet]. 2022 [cited 2023 Aug 3]. Available from:  
549 [https://www.who.int/publications/m/item/global-covid-19-vaccination-strategy-in-a-](https://www.who.int/publications/m/item/global-covid-19-vaccination-strategy-in-a-changing-world--july-2022-update)  
550 [changing-world--july-2022-update](https://www.who.int/publications/m/item/global-covid-19-vaccination-strategy-in-a-changing-world--july-2022-update)
- 551 20. Bubar KM, Reinholt K, Kissler SM, Lipsitch M, Cobey S, Grad YH, et al. Model-informed  
552 COVID-19 vaccine prioritization strategies by age and serostatus. *Science*. 2021 Feb  
553 26;371(6532):916–21.
- 554 21. Reichert TA, Sugaya N, Fedson DS, Glezen WP, Simonsen L, Tashiro M. The Japanese  
555 Experience with Vaccinating Schoolchildren against Influenza. *N Engl J Med*. 2001 Mar  
556 22;344(12):889–96.



- 557 22. Hill EM, Petrou S, Forster H, Lusignan S de, Yonova I, Keeling MJ. Optimising age coverage of  
558 seasonal influenza vaccination in England: A mathematical and health economic evaluation.  
559 PLOS Comput Biol. 2020 Oct 6;16(10):e1008278.
- 560 23. Longini IM Jr, Halloran ME. Strategy for Distribution of Influenza Vaccine to High-Risk Groups  
561 and Children. Am J Epidemiol. 2005 Feb 15;161(4):303–6.
- 562 24. Medlock J, Galvani AP. Optimizing Influenza Vaccine Distribution. Science. 2009 Sep  
563 25;325(5948):1705–8.
- 564 25. Ndeffo Mbah ML, Medlock J, Meyers LA, Galvani AP, Townsend JP. Optimal targeting of  
565 seasonal influenza vaccination toward younger ages is robust to parameter uncertainty.  
566 Vaccine. 2013 Jun 26;31(30):3079–89.
- 567 26. Goldstein E, Apolloni A, Lewis B, Miller JC, Macauley M, Eubank S, et al. Distribution of  
568 vaccine/antivirals and the ‘least spread line’ in a stratified population. J R Soc Interface.  
569 2010 May 6;7(46):755–64.
- 570 27. Miller MA, Viboud C, Olson DR, Grais RF, Rabaa MA, Simonsen L. Prioritization of Influenza  
571 Pandemic Vaccination to Minimize Years of Life Lost. J Infect Dis. 2008 Aug 1;198(3):305–11.
- 572 28. Knipl DH, Röst G. Modelling the strategies for age specific vaccination scheduling during  
573 influenza pandemic outbreaks. Math Biosci Eng MBE. 2011 Jan;8(1):123–39.
- 574 29. Mylius SD, Hagenaars TJ, Lugnér AK, Wallinga J. Optimal allocation of pandemic influenza  
575 vaccine depends on age, risk and timing. Vaccine. 2008 Jul 4;26(29–30):3742–9.
- 576 30. Bansal S, Pourbohloul B, Meyers LA. A Comparative Analysis of Influenza Vaccination  
577 Programs. PLOS Med. 2006 Oct 3;3(10):e387.
- 578 31. Centers for Disease Control and Prevention. Past Seasons’ Vaccine Effectiveness (VE)  
579 Estimates [Internet]. Centers for Disease Control and Prevention. 2023 [cited 2023 Aug 3].  
580 Available from: <https://www.cdc.gov/flu/vaccines-work/past-seasons-estimates.html>
- 581 32. Ferdinands JM, Gaglani M, Martin ET, Middleton D, Monto AS, Murthy K, et al. Prevention of  
582 Influenza Hospitalization Among Adults in the United States, 2015-2016: Results From the  
583 US Hospitalized Adult Influenza Vaccine Effectiveness Network (HAIVEN). J Infect Dis. 2019  
584 Sep 13;220(8):1265–75.
- 585 33. Institute for Environmental Science and Research Limited. 2019 Annual Influenza Summary  
586 [Internet]. Available from: [https://www.esr.cri.nz/assets/Intelligence-Hub-  
587 2023/Surveillance-reports-and-dashboards/Influenza/InfluenzaAnn2019.pdf](https://www.esr.cri.nz/assets/Intelligence-Hub-2023/Surveillance-reports-and-dashboards/Influenza/InfluenzaAnn2019.pdf)
- 588 34. Cheng AC, Dwyer DE, Homes M, Irving LB, Brown SG, Waterer GW, et al. Influenza  
589 epidemiology, vaccine coverage and vaccine effectiveness in sentinel Australian hospitals in  
590 2013: the Influenza Complications Alert Network [Internet]. Australian Government

- 591 Department of Health; [cited 2023 Aug 3]. Available from:  
592 <https://www1.health.gov.au/internet/main/publishing.nsf/Content/cda-cdi3802e.htm>
- 593 35. Arriola C, Garg S, Anderson EJ, Ryan PA, George A, Zansky SM, et al. Influenza Vaccination  
594 Modifies Disease Severity Among Community-dwelling Adults Hospitalized With Influenza.  
595 *Clin Infect Dis Off Publ Infect Dis Soc Am*. 2017 Oct 15;65(8):1289–97.
- 596 36. Doyon-Plourde P, Przepiorkowski J, Young K, Zhao L, Sinilaite A. Intraseasonal waning  
597 immunity of seasonal influenza vaccine – A systematic review and meta-analysis. *Vaccine*.  
598 2023 Jul 12;41(31):4462–71.
- 599 37. Weycker D, Edelsberg J, Halloran ME, Longini IM, Nizam A, Ciuryla V, et al. Population-wide  
600 benefits of routine vaccination of children against influenza. *Vaccine*. 2005 Jan  
601 26;23(10):1284–93.
- 602 38. Wallinga J, Teunis P, Kretzschmar M. Using data on social contacts to estimate age-specific  
603 transmission parameters for respiratory-spread infectious agents. *Am J Epidemiol*. 2006 Nov  
604 15;164(10):936–44.
- 605 39. Halloran ME, Longini IM. Community Studies for Vaccinating Schoolchildren Against  
606 Influenza. *Science*. 2006 Feb 3;311(5761):615–6.
- 607 40. Quandelacy TM, Viboud C, Charu V, Lipsitch M, Goldstein E. Age- and Sex-related Risk  
608 Factors for Influenza-associated Mortality in the United States Between 1997–2007. *Am J*  
609 *Epidemiol*. 2014 Jan 15;179(2):156–67.
- 610 41. Li L, Yan ZL, Luo L, Liu W, Yang Z, Shi C, et al. Influenza-Associated Excess Mortality by Age,  
611 Sex, and Subtype/Lineage: Population-Based Time-Series Study With a Distributed-Lag  
612 Nonlinear Model. *JMIR Public Health Surveill*. 2023 Jan 11;9:e42530.
- 613 42. Tokars JI, Olsen SJ, Reed C. Seasonal Incidence of Symptomatic Influenza in the United  
614 States. *Clin Infect Dis Off Publ Infect Dis Soc Am*. 2018 May 2;66(10):1511–8.
- 615 43. World Health Organization. Vaccines against influenza: WHO position paper – May 2022.  
616 *Wkly Epidemiol Rec*. 2022 May 13;97(19):185–208.
- 617 44. Newall AT, Dehollain JP. The cost-effectiveness of influenza vaccination in elderly Australians:  
618 an exploratory analysis of the vaccine efficacy required. *Vaccine*. 2014 Mar 10;32(12):1323–  
619 5.
- 620 45. Schwartz B, Orenstein WA. Prioritization of Pandemic Influenza Vaccine: Rationale and  
621 Strategy for Decision Making. *Vaccines Pandemic Influenza*. 2009 Jun 15;333:495–507.
- 622 46. Tran TNA, Wikle NB, Albert E, Inam H, Strong E, Brinda K, et al. Optimal SARS-CoV-2 vaccine  
623 allocation using real-time attack-rate estimates in Rhode Island and Massachusetts. *BMC*  
624 *Med*. 2021 Jul 13;19(1):162.

- 625 47. Worby CJ, Chaves SS, Wallinga J, Lipsitch M, Finelli L, Goldstein E. On the relative role of  
626 different age groups in influenza epidemics. *Epidemics*. 2015 Dec;13:10–6.
- 627 48. Schmid P, Rauber D, Betsch C, Lidolt G, Denker ML. Barriers of Influenza Vaccination  
628 Intention and Behavior - A Systematic Review of Influenza Vaccine Hesitancy, 2005 - 2016.  
629 *PloS One*. 2017;12(1):e0170550.
- 630 49. Price T, McColl E, Visram S. Barriers and facilitators of childhood flu vaccination: the views of  
631 parents in North East England. *Z Gesundheitswissenschaften J Public Health*.  
632 2022;30(11):2619–26.
- 633 50. Basta NE, Chao DL, Halloran ME, Matrajt L, Longini IM. Strategies for pandemic and seasonal  
634 influenza vaccination of schoolchildren in the United States. *Am J Epidemiol*. 2009 Sep  
635 15;170(6):679–86.
- 636 51. Plans-Rubió P. The vaccination coverage required to establish herd immunity against  
637 influenza viruses. *Prev Med*. 2012 Jul;55(1):72–7.
- 638 52. Sah P, Medlock J, Fitzpatrick MC, Singer BH, Galvani AP. Optimizing the impact of low-  
639 efficacy influenza vaccines. *Proc Natl Acad Sci U S A*. 2018 May 15;115(20):5151–6.
- 640 53. Patel R, Longini IM, Halloran ME. Finding optimal vaccination strategies for pandemic  
641 influenza using genetic algorithms. *J Theor Biol*. 2005 May 21;234(2):201–12.
- 642 54. Servadio JL, Thai PQ, Choisy M, Boni MF. Repeatability and timing of tropical influenza  
643 epidemics. *PLOS Comput Biol*. 2023 Jul 19;19(7):e1011317.
- 644 55. Bennett KJ, Pumkam C, Probst JC. Rural-urban differences in the location of influenza  
645 vaccine administration. *Vaccine*. 2011 Aug 11;29(35):5970–7.
- 646 56. vom Steeg LG, Klein SL. Sex Matters in Infectious Disease Pathogenesis. *PLoS Pathog*. 2016  
647 Feb 18;12(2):e1005374.
- 648 57. Ha NT, Nguyen TTM, Nguyen TX, Tran PD, Nguyen HM, Ha VT, et al. A case study of an  
649 influenza vaccination program for health care workers in Vietnam. *BMC Health Serv Res*.  
650 2020 Aug 24;20(1):785.
- 651 58. Baguelin M, Jit M, Miller E, Edmunds WJ. Health and economic impact of the seasonal  
652 influenza vaccination programme in England. *Vaccine*. 2012 May 14;30(23):3459–62.
- 653 59. Belongia EA, Sundaram ME, McClure DL, Meece JK, Ferdinands J, VanWormer JJ. Waning  
654 vaccine protection against influenza A (H3N2) illness in children and older adults during a  
655 single season. *Vaccine*. 2015 Jan 1;33(1):246–51.

- 656 60. Ray GT, Lewis N, Klein NP, Daley MF, Wang SV, Kulldorff M, et al. Intraseason Waning of  
657 Influenza Vaccine Effectiveness. *Clin Infect Dis Off Publ Infect Dis Soc Am*. 2019 May  
658 2;68(10):1623–30.
- 659 61. Belongia EA, Simpson MD, King JP, Sundaram ME, Kelley NS, Osterholm MT, et al. Variable  
660 influenza vaccine effectiveness by subtype: a systematic review and meta-analysis of test-  
661 negative design studies. *Lancet Infect Dis*. 2016 Aug 1;16(8):942–51.
- 662 62. Russell K, Chung JR, Monto AS, Martin ET, Belongia EA, McLean HQ, et al. Influenza Vaccine  
663 Effectiveness in Older Adults Compared with Younger Adults Over Five Seasons. *Vaccine*.  
664 2018 Feb 28;36(10):1272–8.
- 665 63. Yang W, Lau EHY, Cowling BJ. Dynamic interactions of influenza viruses in Hong Kong during  
666 1998-2018. *PLoS Comput Biol*. 2020 Jun 15;16(6).
- 667 64. Lloyd AL. Realistic Distributions of Infectious Periods in Epidemic Models: Changing Patterns  
668 of Persistence and Dynamics. *Theor Popul Biol*. 2001 Aug 1;60(1):59–71.
- 669 65. Centers for Disease Control and Prevention. Estimated Flu-Related Illnesses, Medical visits,  
670 Hospitalizations, and Deaths in the United States — 2018–2019 Flu Season [Internet]. 2021  
671 [cited 2023 Aug 3]. Available from: <https://www.cdc.gov/flu/about/burden/2018-2019.html>
- 672 66. Vietnam Population 2023 [Internet]. *World Population Review*. [cited 2023 Aug 3]. Available  
673 from: <https://worldpopulationreview.com/countries/vietnam-population>
- 674 67. World Bank. Birth rate, crude (per 1,000 people) - Vietnam [Internet]. *World Bank Open*  
675 *Data*. [cited 2023 Sep 12]. Available from:  
676 <https://data.worldbank.org/indicator/SP.DYN.CBRT.IN?locations=VN>
- 677 68. World Health Organization. Life tables: Life tables by country Viet Nam [Internet]. *Regional*  
678 *Health Observatory - South East Asia*. 2020 [cited 2023 Sep 7]. Available from:  
679 <https://apps.who.int/gho/data/view.searo.61830?lang=en>
- 680 69. Prem K, Zandvoort K van, Klepac P, Eggo RM, Davies NG, Group C for the MM of IDC 19 W, et  
681 al. Projecting contact matrices in 177 geographical regions: An update and comparison with  
682 empirical data for the COVID-19 era. *PLOS Comput Biol*. 2021 Jul 26;17(7):e1009098.
- 683 70. Prem K. *kieshaprem/synthetic-contact-matrices: First release of the synthetic contact*  
684 *matrices repository* [Internet]. *Zenodo*; 2021 [cited 2023 Sep 13]. Available from:  
685 <https://zenodo.org/record/4889500>
- 686 71. R Core Team. *R: A language and environment for statistical computing* [Internet]. Vienna,  
687 Austria: R Foundation for Statistical Computing; 2022. Available from: [https://www.R-](https://www.R-project.org)  
688 [project.org](https://www.R-project.org)

689 72. Eddelbuettel D, Francois R. Rcpp: Seamless R and C++ Integration. J Stat Softw. 2011 Apr  
690 13;40:1–18.

691 73. Carnell R. lhs: Latin Hypercube Samples [Internet]. 2022. Available from: [https://CRAN.R-](https://CRAN.R-project.org/package=lhs)  
692 [project.org/package=lhs](https://CRAN.R-project.org/package=lhs)

693

694