

Supplementary Appendix to

The association between time-weighted remnant cholesterol and cardiovascular and non-cardiovascular mortality: A population-based cohort study

Table of Contents

Supplementary Table 2. Formula of the variability measures5

Supplementary Table 3. The baseline, and clinical characteristics of patients in the study cohorts of four quartiles remnant cholesterol.6

Supplementary Table 4. The outcome of patients in the study cohorts of four quartiles remnant cholesterol..... 11

Supplementary Figure 1. Distribution and association analysis between remnant cholesterol and HDL-C, LDL-C, TC, and TG. 12

Supplementary Figure 2. Cumulative incidence curves stratified by quartiles of remnant cholesterol to predict mortality outcome. 14

Supplementary Figure 4. Restricted cubic spline comparing predicted cause-specific mortality between individuals with and without prior atherosclerotic cardiovascular disease..... 18

Supplementary Table 1. International Classification of Diseases Ninth Version (ICD-9) codes for baseline comorbidities.

Diabetes mellitus	250	250.01	250.02	250.03	250.1	250.11	250.12	250.13	250.2	250.21	250.22	250.23	250.3	250.31	250.32	250.33	250.4	250.41	250.42	250.43	250.5	250.51	250.52	250.53	250.6	250.61	250.62	250.63	250.7	250.71	250.72	250.73	250.8	250.81	250.82	250.83	250.9	250.91	250.92	250.93																														
Renal diseases	582	582	582.1	582.2	582.4	582.8	582.81	582.89	582.9	583	583	583.1	583.2	583.4	583.6	583.7	585	585.1	585.2	585.3	585.4	585.5	585.6	585.9	586	588	588	588.1	588.8	588.81	588.89	588.9																																						
Cerebrovascular disease	430	431	432	432.1	432.9	433	433.01	433.1	433.11	433.2	433.21	433.3	433.31	433.8	433.81	433.9	433.91	434	434.01	434.1	434.11	434.9	434.91	435	435.1	435.2	435.3	435.8	435.9	436	437	437.1	437.2	437.3	437.4	437.5	437.6	437.7	437.8	437.9	438	438.1	438.11	438.12	438.13	438.14	438.19	438.2	438.21	438.22	438.3	438.31	438.32	438.4	438.41	438.42	438.5	438.51	438.52	438.53	438.6	438.7	438.8	438.81	438.82	438.83	438.84	438.85	438.89	438.9
Acute myocardial infarction	410	410	410	410.01	410.02	410.1	410.1	410.11	410.12	410.2	410.2	410.21	410.22	410.3	410.3	410.31	410.32	410.4	410.4	410.41	410.42	410.5	410.5	410.51	410.52	410.6	410.6	410.61	410.62	410.7	410.7	410.71	410.72	410.8	410.8	410.81	410.82	410.9	410.9	410.91	410.92	412																												
Hypertension	401	401.1	401.9	402	402.01	402.1	402.11	402.9	402.91	403	403.01	403.1	403.11	403.9	403.91	404	404.01	404.02	404.03	404.1	404.11	404.12	404.13	404.9	404.91	404.92	404.93	405	405.01	405.09	405.1	405.11	405.19	405.9	405.91	405.99	437.2																																	
Heart failure	428	428	428.1	428.2	428.2	428.21	428.22	428.23	428.3	428.3	428.31	428.32	428.33	428.4	428.4	428.41	428.42	428.43	428.9	398.91	402.01	402.11	402.91	404.01	404.03	404.11	404.13	404.91	404.93																																									
Atrial fibrillation	427.31	429.4																																																																				
Liver diseases	456	456.1	456.2	572.2	572.3	572.4	572.8	571.4	571.5	571.6																																																												
COPD	490	491	492	493	494	495	496	491.1	491.2	491.21	491.22	491.8	491.9	492.8	493.01	493.02	493.1	493.11	493.12	493.2	493.21	493.22	493.8	493.81	493.82	493.9	493.91	493.92	494.1	495.1	495.2	495.3	495.4	495.5	495.6	495.7	495.8	495.9																																
Ischaemic heart diseases	410.01	410.02	410.1	410.11	410.12	410.2	410.21	410.22	410.3	410.31	410.32	410.4	410.41	410.42	410.5	410.51	410.52	410.6	410.61	410.62	410.7	410.71	410.72	410.8	410.81	410.82	410.9	410.91	410.92	411	411.1	411.8	411.81	411.89	413	413.1	413.9	414	414.01	414.02	414.03	414.04	414.05	414.06	414.07	414.1	414.11	414.12	414.19	414.2	414.3	414.4	414.8	414.9	410	412														
Cancer	140	140.1	140.3	140.4	140.5	140.6	140.8	140.9	141	141.1	141.2	141.3	141.4	141.5	141.6	141.8	141.9	142	142.1	142.2	142.8	142.9	143	143.1	143.8	143.9	144	144.1	144.8	144.9	145	145.1	145.2	145.3	145.4	145.5	145.6	145.8	145.9	146	146.1	146.2	146.3	146.4	146.5	146.6	146.7	146.8	146.9	147	147.1	147.2	147.3	147.8	147.9	148	148.1	148.2	148.3	148.8	148.9	149	149.1	149.8	149.9	150				

150.1 150.2 150.3 150.4 150.5 150.8 150.9 151 151.1 151.2 151.3
151.4 151.5 151.6 151.8 151.9 152 152.1 152.2 152.3 152.8 152.9
153 153.1 153.2 153.3 153.4 153.5 153.6 153.7 153.8 153.9 154
154.1 154.2 154.3 154.8 155 155.1 155.2 156 156.1 156.2 156.8
156.9 157 157.1 157.2 157.3 157.4 157.8 157.9 158 158.8 158.9
159 159.1 159.8 159.9 160 160.1 160.2 160.3 160.4 160.5 160.8
160.9 161 161.1 161.2 161.3 161.8 161.9 162 162.2 162.3 162.4
162.5 162.8 162.9 163 163.1 163.8 163.9 164 164.1 164.2 164.3
164.8 164.9 165 165.8 165.9 170 170.1 170.2 170.3 170.4 170.5
170.6 170.7 170.8 170.9 171 171.2 171.3 171.4 171.5 171.6 171.7
171.8 171.9 172 172.1 172.2 172.3 172.4 172.5 172.6 172.7 172.8
172.9 and 173 173.01 173.02 173.09 173.1 173.11 173.12 173.19 173.2
173.21 173.22 173.29 173.3 173.31 173.32 173.39 173.4 173.41 173.42 173.49
173.5 173.51 173.52 173.59 173.6 173.61 173.62 173.69 173.7 173.71 173.72
173.79 173.8 173.81 173.82 173.89 173.9 173.91 173.92 173.99 174 174.1
174.2 174.3 174.4 174.5 174.6 174.8 174.9 175 175.9 176 176.1
176.2 176.3 176.4 176.5 176.8 176.9 179 180 180.1 180.8 180.9
181 182 182.1 182.8 183 183.2 183.3 183.4 183.5 183.8 183.9
184 184.1 184.2 184.3 184.4 184.8 184.9 185 186 186.9 187
187.1 187.2 187.3 187.4 187.5 187.6 187.7 187.8 187.9 188 188.1
188.2 188.3 188.4 188.5 188.6 188.7 188.8 188.9 189 189.1 189.2
189.3 189.4 189.8 189.9 190 190.1 190.2 190.3 190.4 190.5 190.6
190.7 190.8 190.9 191 191.1 191.2 191.3 191.4 191.5 191.6 191.7
191.8 191.9 192 192.1 192.2 192.3 192.8 192.9 193 194 194.1
194.3 194.4 194.5 194.6 194.8 194.9 195 195.1 195.2 195.3 195.4
195.5 195.8 200 200.01 200.02 200.03 200.04 200.05 200.06 200.07 200.08
200.1 200.11 200.12 200.13 200.14 200.15 200.16 200.17 200.18 200.2 200.21
200.22 200.23 200.24 200.25 200.26 200.27 200.28 200.3 200.31 200.32 200.33
200.34 200.35 200.36 200.37 200.38 200.4 200.41 200.42 200.43 200.44 200.45
200.46 200.47 200.48 200.5 200.51 200.52 200.53 200.54 200.55 200.56 200.57
200.58 200.6 200.61 200.62 200.63 200.64 200.65 200.66 200.67 200.68 200.7
200.71 200.72 200.73 200.74 200.75 200.76 200.77 200.78 200.8 200.81 200.82
200.83 200.84 200.85 200.86 200.87 200.88 201 201.01 201.02 201.03 201.04
201.05 201.06 201.07 201.08 201.1 201.11 201.12 201.13 201.14 201.15 201.16
201.17 201.18 201.2 201.21 201.22 201.23 201.24 201.25 201.26 201.27 201.28
201.4 201.41 201.42 201.43 201.44 201.45 201.46 201.47 201.48 201.5 201.51
201.52 201.53 201.54 201.55 201.56 201.57 201.58 201.6 201.61 201.62 201.63
201.64 201.65 201.66 201.67 201.68 201.7 201.71 201.72 201.73 201.74 201.75
201.76 201.77 201.78 201.9 201.91 201.92 201.93 201.94 201.95 201.96 201.97
201.98 202 202.01 202.02 202.03 202.04 202.05 202.06 202.07 202.08 202.1
202.11 202.12 202.13 202.14 202.15 202.16 202.17 202.18 202.2 202.21 202.22
202.23 202.24 202.25 202.26 202.27 202.28 202.3 202.31 202.32 202.33 202.34
202.35 202.36 202.37 202.38 202.4 202.41 202.42 202.43 202.44 202.45 202.46
202.47 202.48 202.5 202.51 202.52 202.53 202.54 202.55 202.56 202.57 202.58
202.6 202.61 202.62 202.63 202.64 202.65 202.66 202.67 202.68 202.7 202.71
202.72 202.73 202.74 202.75 202.76 202.77 202.78 202.8 202.81 202.82 202.83
202.84 202.85 202.86 202.87 202.88 202.9 202.91 202.92 202.93 202.94 202.95

202.96 202.97 202.98 203 203.01 203.02 203.1 203.11 203.12 203.8 203.81
203.82 204 204.01 204.02 204.1 204.11 204.12 204.2 204.21 204.22 204.8
204.81 204.82 204.9 204.91 204.92 205 205.01 205.02 205.1 205.11 205.12
205.2 205.21 205.22 205.3 205.31 205.32 205.8 205.81 205.82 205.9 205.91
205.92 206 206.01 206.02 206.1 206.11 206.12 206.2 206.21 206.22 206.8
206.81 206.82 206.9 206.91 206.92 207 207.01 207.02 207.1 207.11 207.12
207.2 207.21 207.22 207.8 207.81 207.82 208 208.01 208.02 208.1 208.11
208.12 208.2 208.21 208.22 208.8 208.81 208.82 208.9 208.91 208.92 196
196.1 196.2 196.3 196.5 196.6 196.8 196.9 197 197.1 197.2 197.3
197.4 197.5 197.6 197.7 197.8 198 198.1 198.2 198.3 198.4 198.5
198.6 198.7 198.8 198.81 198.82 198.89 199 199.1

Supplementary Table 2. Formula of the variability measures

Variability measure	Definition
Standard deviation	$SD = \sqrt{\frac{\sum x - \bar{x} ^2}{N}}$

Supplementary Table 3. The baseline, and clinical characteristics of patients in the study cohorts of four quartiles remnant cholesterol.

* for $p \leq 0.05$, ** for $p \leq 0.01$, *** for $p \leq 0.001$, SD: standard deviation, ACEI: angiotensin-converting-enzyme inhibitors, ARB: angiotensin II receptor blockers, eGFR: estimated glomerular filtration rate.

Characteristics	All (N=75342) Mean(SD);N or Count(%)	Remnant cholesterol, mmol/L (Q1) (N=18779) Mean(SD);N or Count(%)	Remnant cholesterol, mmol/L (Q2) (N=18964) Mean(SD);N or Count(%)	Remnant cholesterol, mmol/L (Q3) (N=18838) Mean(SD);N or Count(%)	Remnant cholesterol, mmol/L (Q4) (N=18761) Mean(SD);N or Count(%)	P-value
Male gender	29905(39.69%)	7697(40.98%)	7519(39.64%)	7245(38.45%)	7444(39.67%)	<0.001* *
Female gender	45437(60.30%)	11082(59.01%)	11445(60.35%)	11593(61.54%)	11317(60.32%)	<0.001* *
Baseline age, year	61.3(13.1);n=75342	60.3(13.8);n=18779	61.6(13.1);n=18964	61.6(12.7);n=18838	61.6(12.8);n=18761	<0.001* *
Remnant cholesterol						
Remnant cholesterol, mmol/L	0.8(0.5);n=75342	0.3(0.1);n=18779	0.5(0.1);n=18964	0.78(0.09);n=18838	1.5(0.7);n=18761	<0.001* *
Time weighted remnant cholesterol, mmol/L	0.9(0.8);n=75342	0.8(0.8);n=18779	0.8(0.7);n=18964	0.88(0.73);n=18838	1.1(0.9);n=18761	<0.001* *
Comorbidities						
Charlson's standard comorbidity index	1.7(1.3);n=75342	1.7(1.3);n=18779	1.8(1.3);n=18964	1.8(1.2);n=18838	1.8(1.2);n=18761	<0.001* *
Dyslipidaemia	1288(1.70%)	188(1.00%)	280(1.47%)	348(1.84%)	472(2.51%)	<0.001* *
Diabetes mellitus	7889(10.47%)	1395(7.42%)	1638(8.63%)	2064(10.95%)	2792(14.88%)	<0.001* *

Hypertension	39026(51.79%)	8800(46.86%)	9815(51.75%)	10104(53.63%)	10307(54.93%)	<0.001* *
Acute myocardial infarction	173(0.22%)	30(0.15%)	48(0.25%)	48(0.25%)	47(0.25%)	0.149
Ischemic heart disease	1516(2.01%)	322(1.71%)	362(1.90%)	395(2.09%)	437(2.32%)	<0.001* *
Heart failure	2932(3.89%)	557(2.96%)	652(3.43%)	784(4.16%)	939(5.00%)	<0.001* *
Atrial fibrillation/Atrial flutter	446(0.59%)	116(0.61%)	120(0.63%)	106(0.56%)	104(0.55%)	0.688
Cerebrovascular accident, stroke	545(0.72%)	102(0.54%)	144(0.75%)	146(0.77%)	153(0.81%)	0.008*
Mental health diseases	668(0.88%)	144(0.76%)	168(0.88%)	160(0.84%)	196(1.04%)	0.034*
Chronic obstructive pulmonary disease	189(0.25%)	66(0.35%)	57(0.30%)	38(0.20%)	28(0.14%)	<0.001* *
Gastrointestinal bleeding	461(0.61%)	110(0.58%)	111(0.58%)	119(0.63%)	121(0.64%)	0.828
Other bleeding	982(1.30%)	282(1.50%)	251(1.32%)	248(1.31%)	201(1.07%)	0.003*
Hip fractures	419(0.55%)	105(0.55%)	100(0.52%)	122(0.64%)	92(0.49%)	0.203
History of falls	1047(1.38%)	249(1.32%)	263(1.38%)	282(1.49%)	253(1.34%)	0.499
Accident fall	1044(1.38%)	249(1.32%)	262(1.38%)	281(1.49%)	252(1.34%)	0.515
Liver diseases	269(0.35%)	87(0.46%)	68(0.35%)	56(0.29%)	58(0.30%)	0.028*
Renal diseases	105(0.13%)	26(0.13%)	18(0.09%)	31(0.16%)	30(0.15%)	0.249
Cancer	683(0.90%)	177(0.94%)	180(0.94%)	176(0.93%)	150(0.79%)	0.361
Medications						
ACEI/ARB	8890(11.79%)	1755(9.34%)	2100(11.07%)	2282(12.11%)	2753(14.67%)	<0.001* *

Anticoagulants	37246(49.43%)	8143(43.36%)	9028(47.60%)	9662(51.28%)	10413(55.50%)	<0.001* *
Antiplatelets	7921(10.51%)	1662(8.85%)	1966(10.36%)	2051(10.88%)	2242(11.95%)	<0.001* *
Lipid-lowering drugs	7021(9.31%)	1200(6.39%)	1624(8.56%)	1840(9.76%)	2357(12.56%)	<0.001* *
Statins and fibrates	8460(11.22%)	1353(7.20%)	1825(9.62%)	2207(11.71%)	3075(16.39%)	<0.001* *
Nitrates	6148(8.16%)	1265(6.73%)	1548(8.16%)	1544(8.19%)	1791(9.54%)	<0.001* *
Diuretics for heart failure	1738(2.30%)	396(2.10%)	418(2.20%)	425(2.25%)	499(2.65%)	0.002*
Diuretics for hypertension	13805(18.32%)	2610(13.89%)	3273(17.25%)	3655(19.40%)	4267(22.74%)	<0.001* *
Calcium channel blockers	15126(20.07%)	3090(16.45%)	3581(18.88%)	4086(21.69%)	4369(23.28%)	<0.001* *
Beta blockers	15006(19.91%)	2792(14.86%)	3503(18.47%)	4042(21.45%)	4669(24.88%)	<0.001* *
Non-steroidal anti-inflammatory drugs	7594(10.07%)	1604(8.54%)	1890(9.96%)	1964(10.42%)	2136(11.38%)	<0.001* *
Anti-diabetic drugs	15121(20.06%)	2860(15.22%)	3483(18.36%)	3996(21.21%)	4782(25.48%)	<0.001* *
Laboratory testing						
eGFR (MDRD), mL/min/1.73m ²	73.7(19.0);n=42133	76.2(19.3);n=9633	74.1(18.8);n=9594	73.2(18.8);n=10493	71.9(18.8);n=12413	<0.001* *
Urea, mmol/L	5.9(2.1);n=41876	5.8(2.2);n=9570	5.9(2.19);n=9544	5.88(2.07);n=10426	5.94(2.17);n=12336	<0.001* *
Creatinine, umol/L	87.9(29.7);n=42133	85.7(29.3);n=9633	87.4(30.0);n=9594	88.0(26.7);n=10493	89.7(31.9);n=12413	<0.001* *

Aspartate transaminase, U/L	28.9(59.0);n=16331	26.8(60.8);n=3698	27.3(43.6);n=3684	29.5(58.3);n=4037	31.0(67.6);n=4912	<0.001* *
Alanine transaminase, U/L	28.4(56.8);n=18912	27.8(90.0);n=4212	26.9(43.6);n=4157	28.7(46.5);n=4552	29.6(39.2);n=5991	<0.001* *
Blood pressures						
Systolic blood pressure, mmHg	139.3(21.1);n=73878	136.6(21.5);n=18436	139.6(21.1);n=18610	140.4(20.7);n=18459	140.6(20.7);n=18373	<0.001* *
SD of systolic blood pressure	13.7(5.8);n=70357	13.2(5.8);n=17604	13.68(5.74);n=17764	13.8(5.7);n=17582	14.0(5.8);n=17407	<0.001* *
Diastolic blood pressure, mmHg	76.3(11.4);n=73878	75.2(11.4);n=18436	76.3(11.4);n=18610	76.8(11.3);n=18459	77.1(11.5);n=18373	<0.001* *
Diabetes profile						
HbA1C, %	7.5(1.7);n=12208	7.3(1.7);n=2329	7.4(1.7);n=2602	7.52(1.72);n=3180	7.7(1.7);n=4097	<0.001* *
SD of HbA1C	0.7(0.7);n=8688	0.68(0.65);n=1615	0.71(0.69);n=1844	0.74(0.73);n=2290	0.8(0.7);n=2939	<0.001* *
Time weighted mean HbA1C, %	7.2(1.2);n=13251	7.2(1.26);n=2528	7.22(1.22);n=2938	7.22(1.32);n=3502	7.3(1.2);n=4283	0.077
Fasting glucose, mmol/L	6.9(3.0);n=26975	6.6(2.9);n=5737	6.7(2.8);n=6052	7.0(3.0);n=6816	7.2(3.2);n=8370	<0.001* *
SD of fasting glucose	1.3(1.6);n=13653	1.2(1.5);n=2661	1.2(1.6);n=2905	1.25(1.51);n=3394	1.3(1.6);n=4693	<0.001* *
Time weighted mean fasting glucose, mmol/L	6.7(2.4);n=21939	6.5(2.5);n=4294	6.6(2.5);n=4859	6.8(2.5);n=5690	7.0(2.3);n=7096	<0.001* *
Lipid profile						
Triglyceride, mmol/L	1.6(1.1);n=75342	0.8(0.4);n=18779	1.2(0.3);n=18964	1.7(0.4);n=18838	2.7(1.6);n=18761	<0.001* *
SD of triglyceride	0.5(0.5);n=75022	0.3(0.3);n=18695	0.3(0.3);n=18885	0.46(0.4);n=18751	0.8(0.8);n=18691	<0.001* *

Time weighted mean triglyceride, mmol/L	1.5(0.5);n=75274	1.3(0.4);n=18755	1.4(0.4);n=18955	1.6(0.4);n=18823	1.8(0.6);n=18741	<0.001* *
Low-density lipoprotein, mmol/L	3.2(0.9);n=75342	3.0(0.8);n=18779	3.2(0.9);n=18964	3.3(0.9);n=18838	3.1(1.0);n=18761	<0.001* *
SD of low-density lipoprotein	0.6(0.3);n=73404	0.5(0.3);n=18348	0.58(0.31);n=18589	0.62(0.32);n=18409	0.64(0.32);n=18058	<0.001* *
Time weighted mean low-density lipoprotein, mmol/L	2.7(0.5);n=73445	2.68(0.48);n=18347	2.72(0.47);n=18621	2.73(0.48);n=18454	2.7(0.51);n=18023	<0.001* *
High-density lipoprotein, mmol/L	1.3(0.4);n=75342	1.6(0.4);n=18779	1.4(0.3);n=18964	1.3(0.3);n=18838	1.2(0.3);n=18761	<0.001* *
SD of high-density lipoprotein	0.2(0.1);n=71219	0.18(0.11);n=17824	0.17(0.09);n=18067	0.16(0.09);n=17823	0.15(0.09);n=17505	<0.001* *
Time weighted mean high-density lipoprotein, mmol/L	1.3(0.2);n=71256	1.4(0.2);n=17820	1.4(0.2);n=18104	1.3(0.19);n=17869	1.3(0.2);n=17463	<0.001* *
Total cholesterol, mmol/L	5.3(1.0);n=75342	4.9(0.9);n=18779	5.2(1.0);n=18964	5.4(1.0);n=18838	5.7(1.1);n=18761	<0.001* *
SD of total cholesterol	0.7(0.4);n=75061	0.6(0.3);n=18716	0.6(0.3);n=18884	0.69(0.35);n=18756	0.8(0.4);n=18705	<0.001* *
Time weighted mean total cholesterol, mmol/L	4.8(0.5);n=75342	4.7(0.6);n=18779	4.76(0.54);n=18964	4.8(0.53);n=18838	4.84(0.54);n=18761	<0.001* *

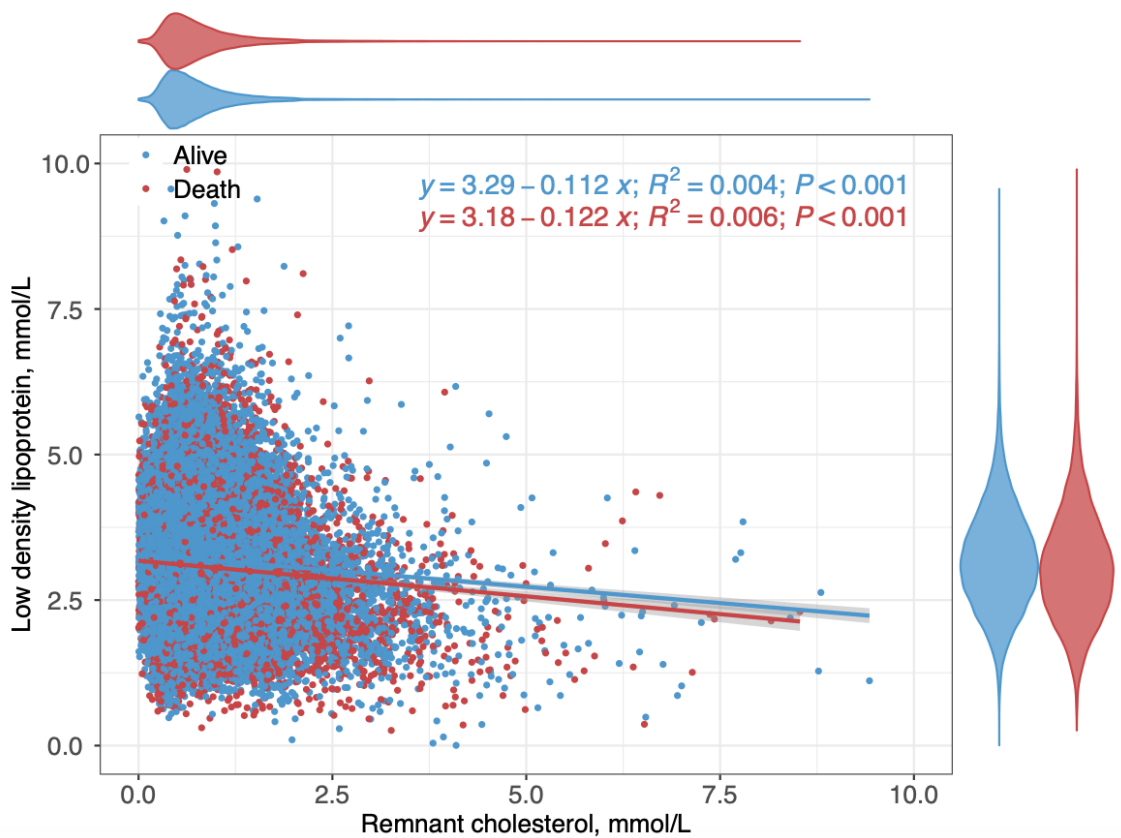
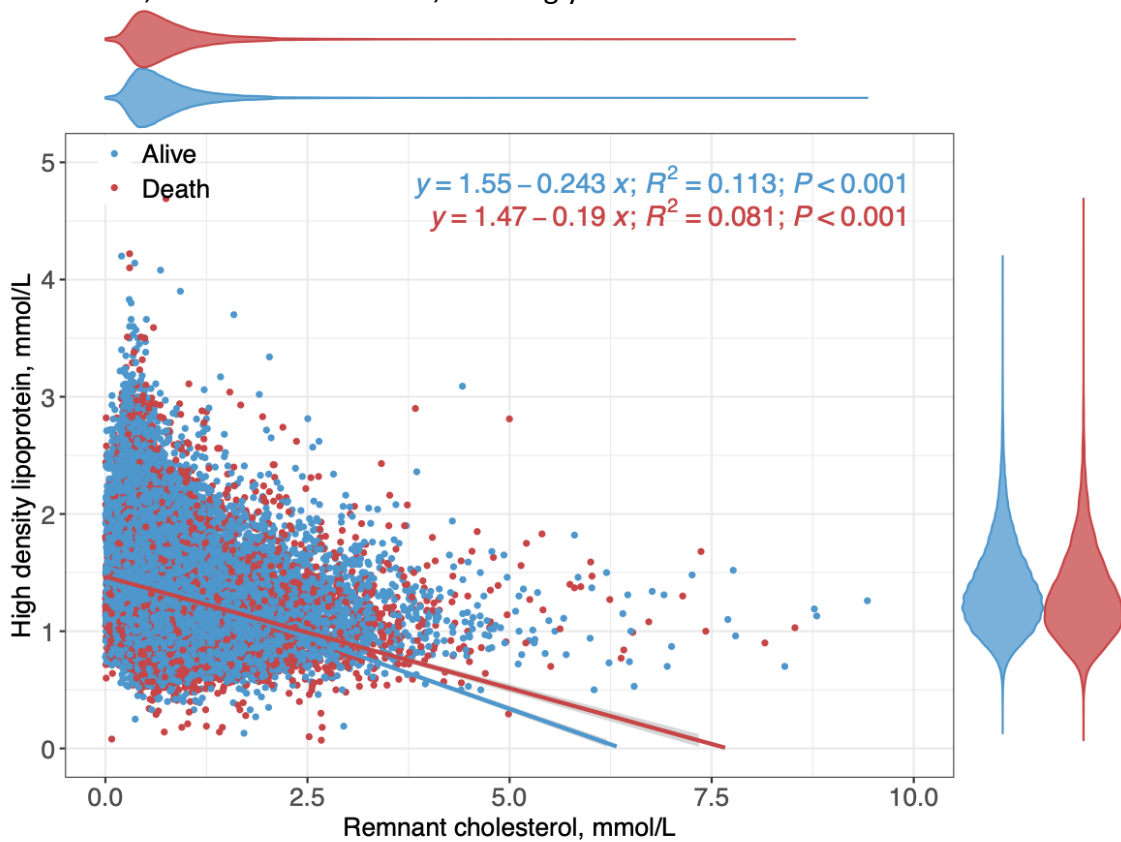
Supplementary Table 4. The outcome of patients in the study cohorts of four quartiles remnant cholesterol.

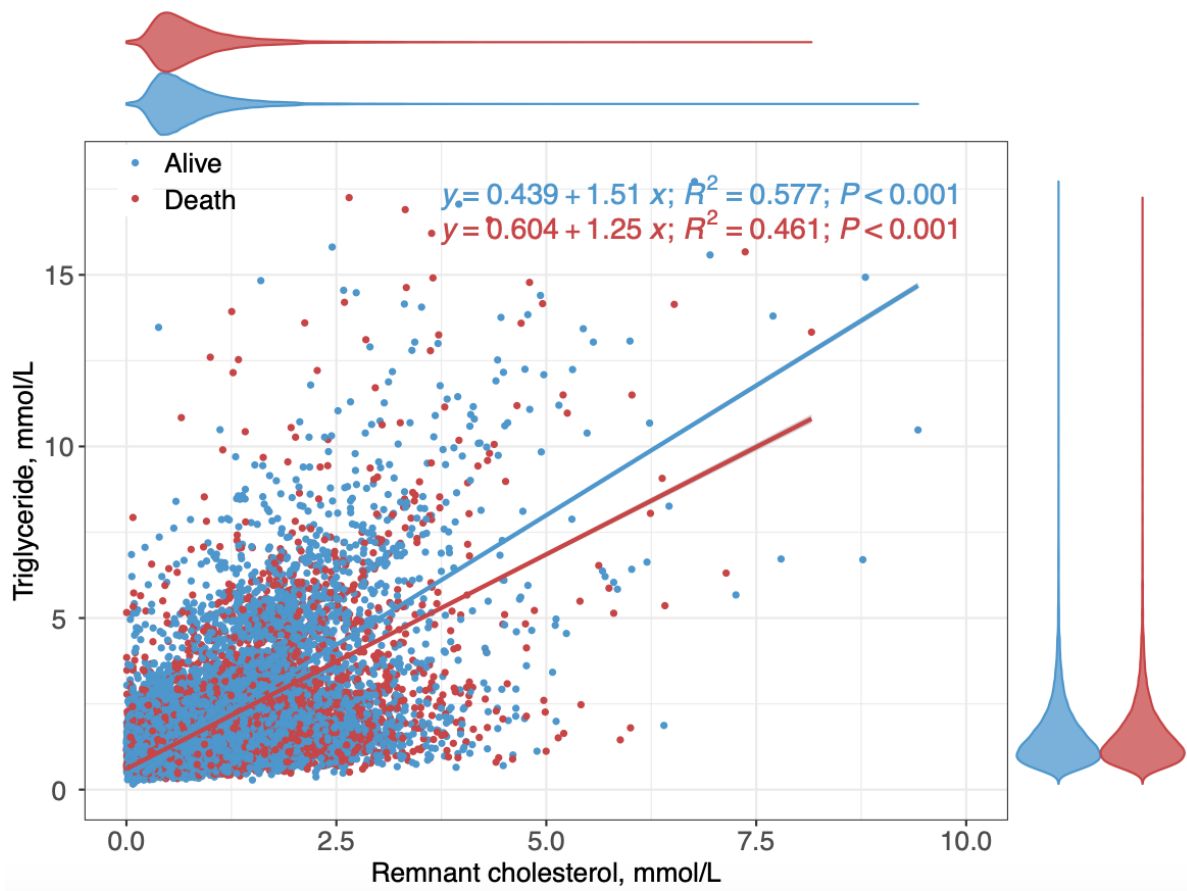
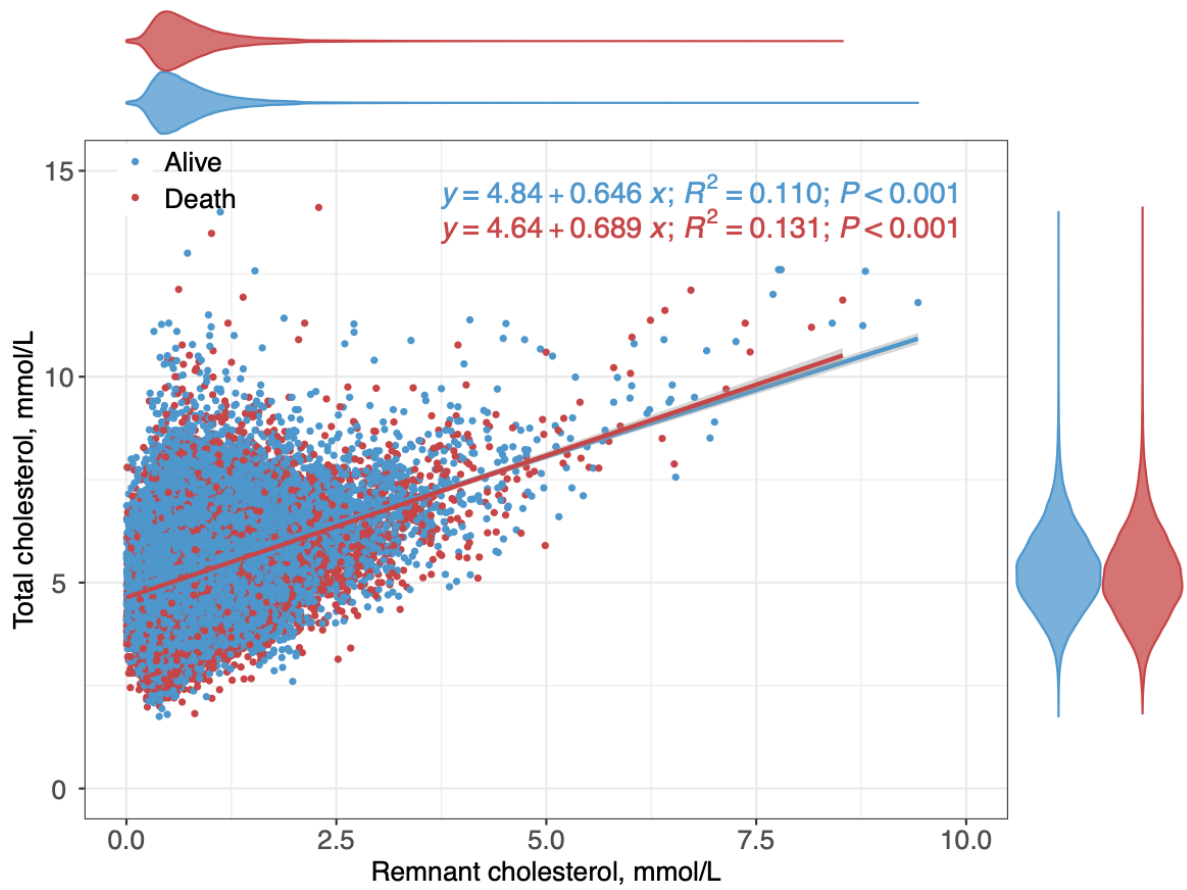
IQR: interquartile range

Characteristics	All (N=75342) Median (IQR);N or Count(%)	Remnant cholesterol, mmol/L (Q1) (N=18779) Median (IQR);N or Count(%)	Remnant cholesterol, mmol/L (Q2) (N=18964) Median (IQR);N or Count(%)	Remnant cholesterol, mmol/L (Q3) (N=18838) Median (IQR);N or Count(%)	Remnant cholesterol, mmol/L (Q4) (N=18761) Median (IQR);N or Count(%)	P-value
All-cause mortality	23475(31.15%)	5451(29.02%)	5814(30.65%)	5925(31.45%)	6285(33.50%)	<0.001**
Cancer-related mortality	4349(5.77%)	994(5.29%)	1104(5.82%)	1118(5.93%)	1133(6.03%)	<0.001**
Cardiovascular-related mortality	4533(6.01%)	1006(5.35%)	1104(5.82%)	1108(5.88%)	1315(7.00%)	<0.001**
Ischaemic heart disease mortality	1925(2.55%)	384(2.04%)	470(2.47%)	483(2.56%)	588(3.13%)	<0.001**
Respiratory-related mortality	7424(9.85%)	1913(10.18%)	1911(10.07%)	1805(9.58%)	1795(9.56%)	<0.001**
Pneumonia-related mortality	6388(8.47%)	1642(8.74%)	1655(8.72%)	1559(8.27%)	1532(8.16%)	<0.001**
Chronic lower respiratory related mortality	250(0.33%)	90(0.47%)	69(0.36%)	40(0.21%)	51(0.27%)	<0.001**
Gastrointestinal-related mortality	663(0.87%)	144(0.76%)	162(0.85%)	195(1.03%)	162(0.86%)	<0.001**
Infection-related mortality	780(1.03%)	168(0.89%)	185(0.97%)	203(1.07%)	224(1.19%)	<0.001**
Genitourinary-related mortality	1775(2.35%)	290(1.54%)	387(2.04%)	486(2.57%)	612(3.26%)	<0.001**
Cerebrovascular-related mortality	1265(1.67%)	313(1.66%)	310(1.63%)	295(1.56%)	347(1.84%)	<0.001**
Kidney-related mortality	1351(1.79%)	215(1.14%)	287(1.51%)	368(1.95%)	481(2.56%)	<0.001**
Septicaemia-related mortality	676(0.89%)	130(0.69%)	160(0.84%)	179(0.95%)	207(1.10%)	<0.001**
Diabetes mellitus related mortality	64(0.08%)	9(0.04%)	12(0.06%)	17(0.09%)	26(0.13%)	0.002*
Haematological and endocrinological-related mortality	223(0.29%)	50(0.26%)	43(0.22%)	66(0.35%)	64(0.34%)	<0.001**
Injury, poisoning and certain other consequences of external causes	309(0.41%)	83(0.44%)	97(0.51%)	66(0.35%)	63(0.33%)	0.022*
Unknown mortality	2627(3.48%)	592(3.15%)	654(3.44%)	679(3.60%)	702(3.74%)	<0.001**

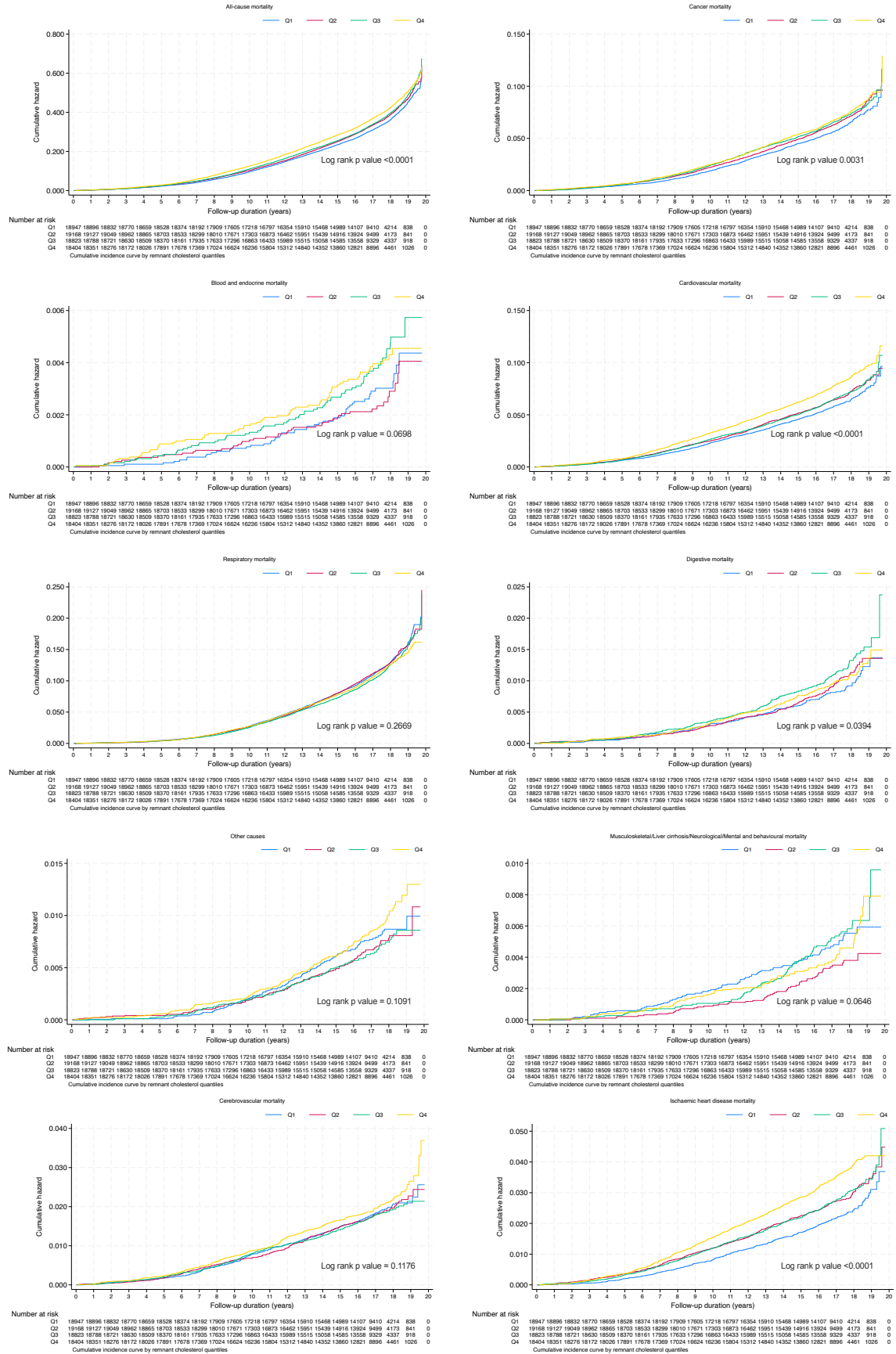
Supplementary Figure 1. Distribution and association analysis between remnant cholesterol and HDL-C, LDL-C, TC, and TG.

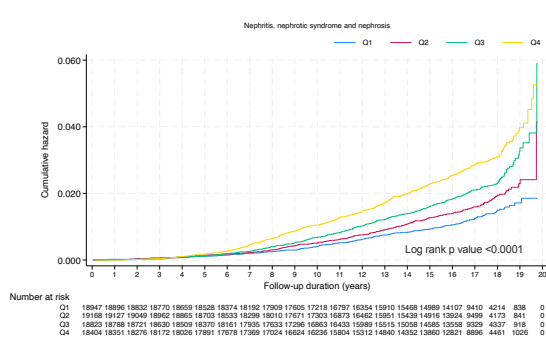
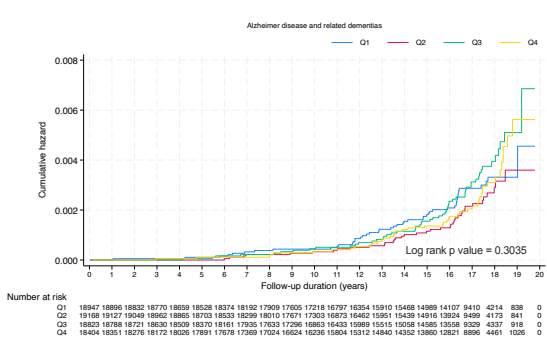
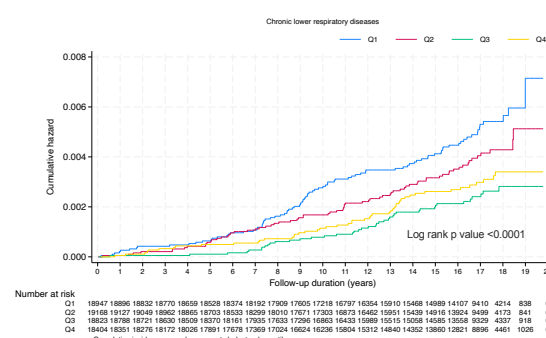
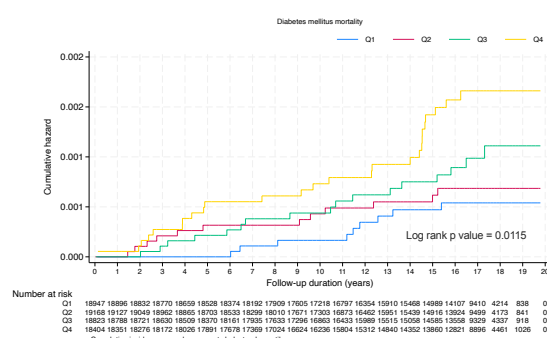
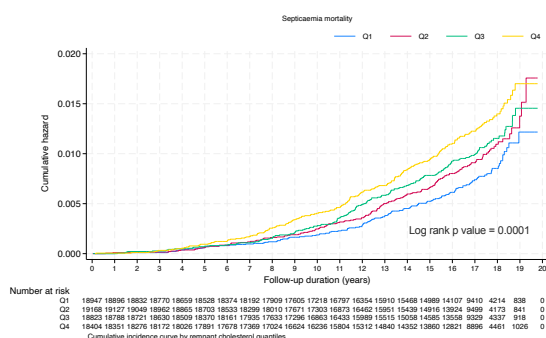
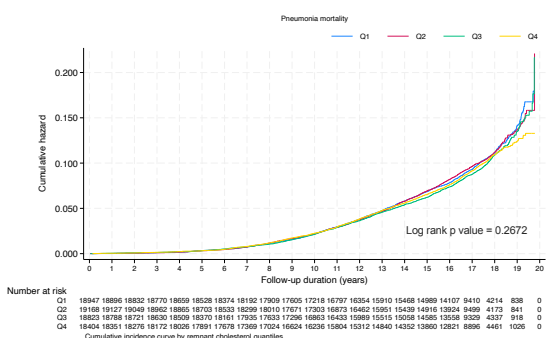
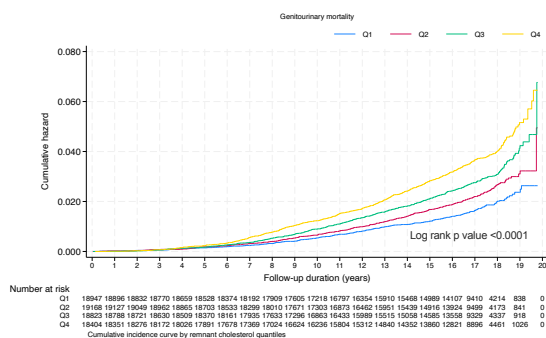
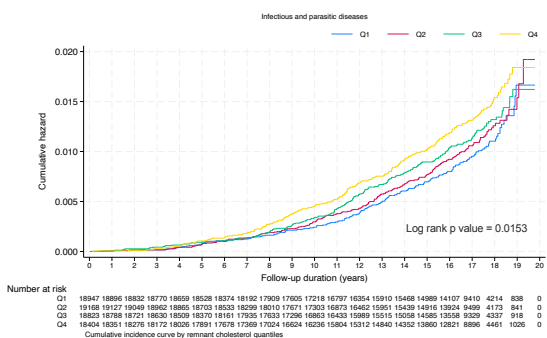
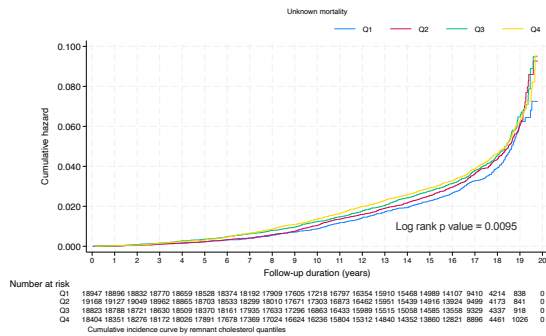
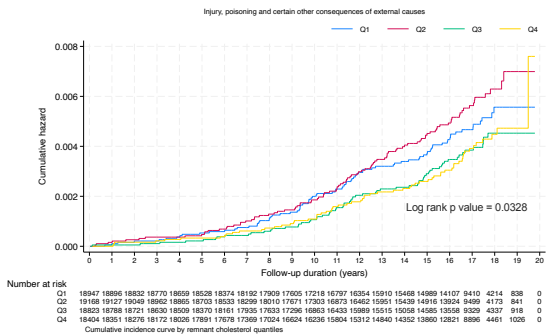
HDL-C = high density lipoprotein cholesterol, LDL-C = low density lipoprotein cholesterol, RR = risk ratios, TC = total cholesterol, TG = triglyceride



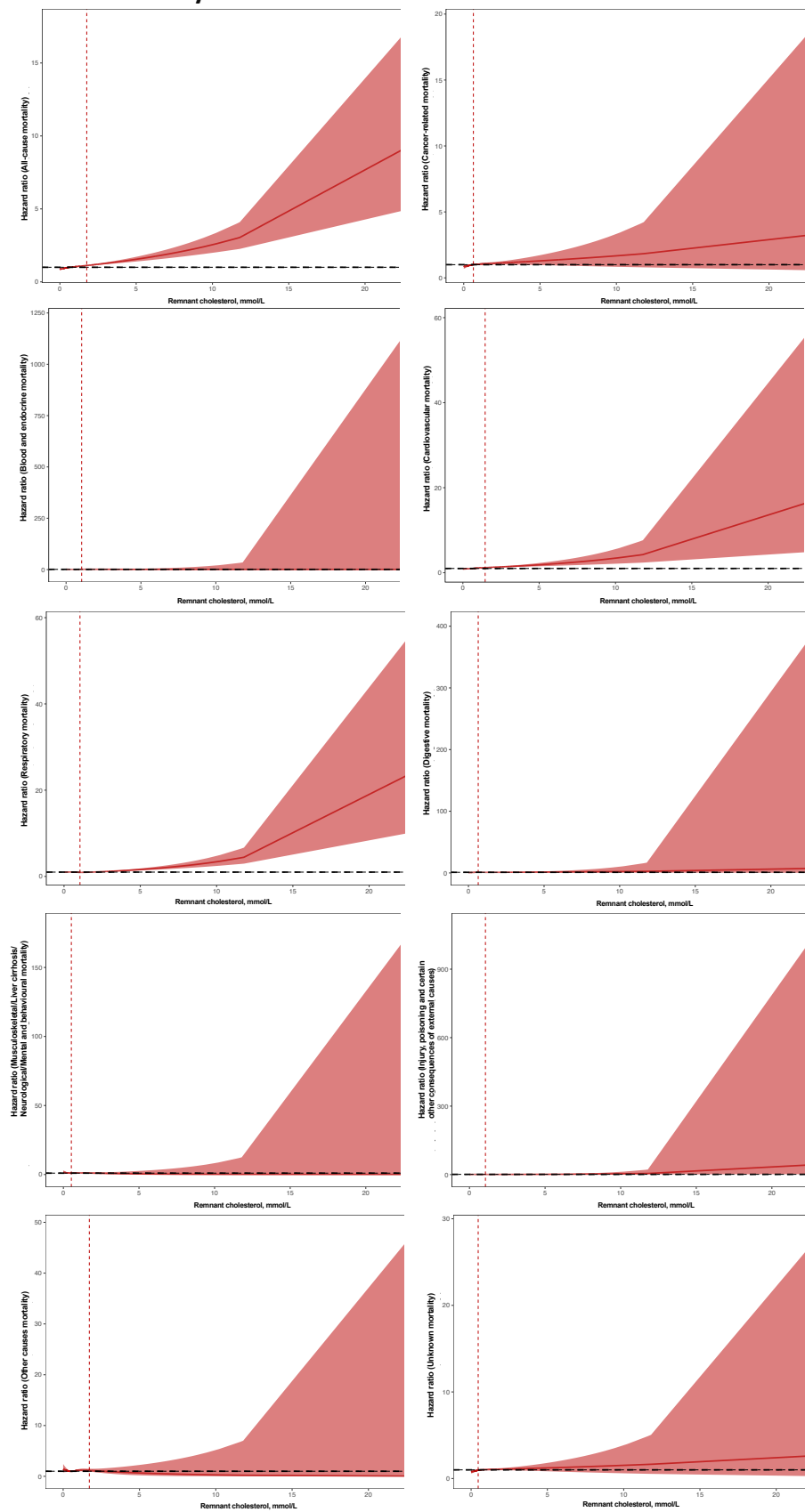


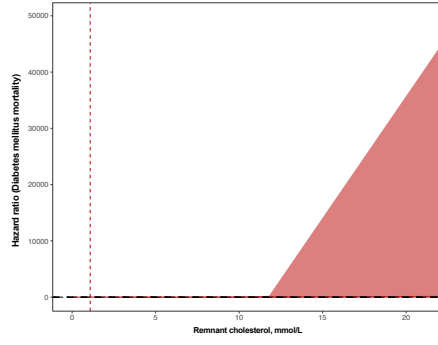
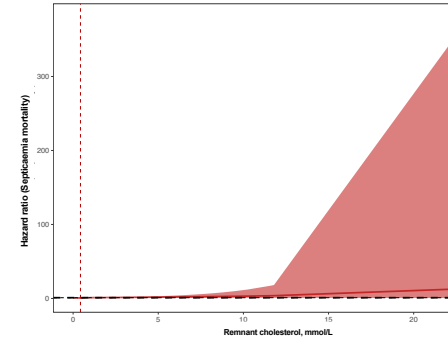
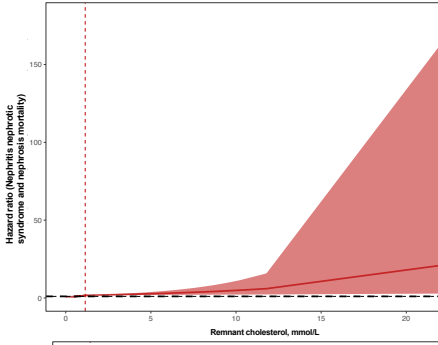
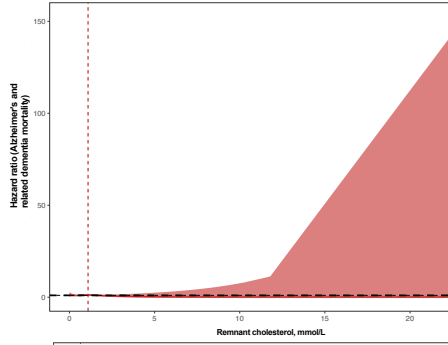
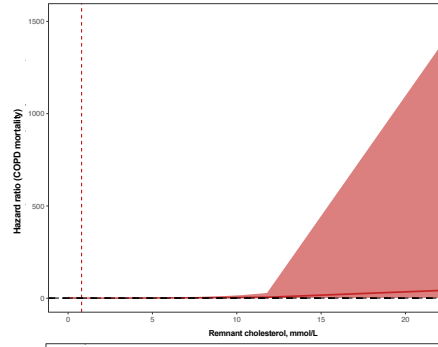
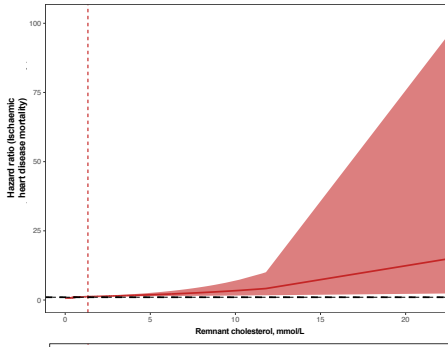
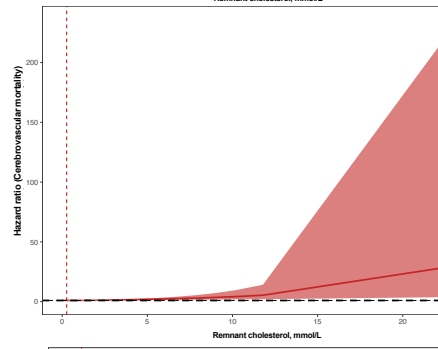
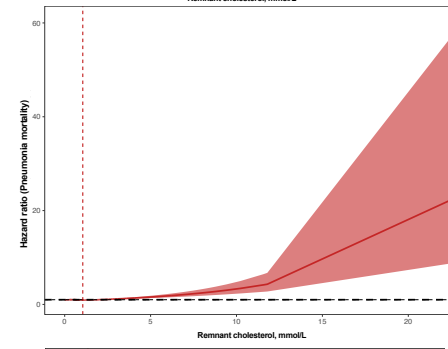
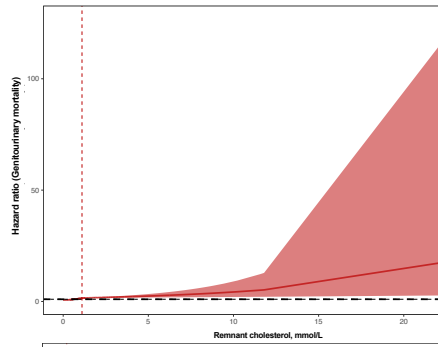
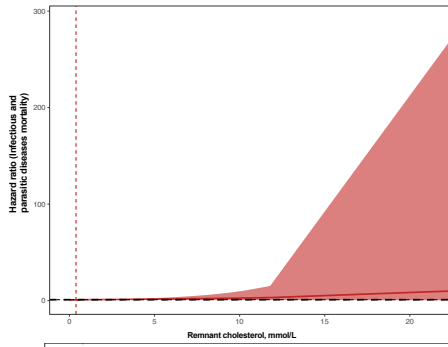
Supplementary Figure 2. Cumulative incidence curves stratified by quartiles of remnant cholesterol to predict mortality outcome.





Supplementary Figure 3. Restricted cubic spline for remnant cholesterol predicting cause-related mortality on continuous scales.





Supplementary Figure 4. Restricted cubic spline comparing predicted cause-specific mortality between individuals with and without prior atherosclerotic cardiovascular disease.

