

715 **Supplementary information**

716 **A. Is elimination necessary to ensure health care provision?**

717 **Illustrative model of peak incidence and hospital occupancy**

718 The SIR-type model that we describe in this section can be used between the periods of
 719 elimination to model the spread of community infections, when a community outbreak is
 720 occurring. Regions with low testing capacity, low contact tracing capacity, or low hospital
 721 capacity may need to implement strict community NPIs as soon as community cases are
 722 detected because capacity is already close to being exceeded. After strict community NPIs
 723 are implemented, at time I_{start} , the peak number of active cases I_{max} , will occur a few days
 724 later (Figure A1, grey lines). Consider the dynamics of incubation, infection, and hospital
 725 occupancy:

726
$$\frac{dE(t)}{dt} = \beta(A(t) + I(t)) - \sigma E(t), \quad (1)$$

727
$$\frac{dA(t)}{dt} = \rho\sigma E(t) - \gamma A(t), \quad (2)$$

728
$$\frac{dI(t)}{dt} = (1 - \rho)\sigma E(t) - (1 - h)\gamma I(t) - h\eta I(t), \quad (3)$$

729
$$\frac{dH(t)}{dt} = h\eta I(t) - \delta H(t), \quad (4)$$

730
$$\frac{dC(t)}{dt} = (1 - \rho)\sigma E(t), \quad (5)$$

731 where $E(t)$ are individuals exposed to the virus, $A(t)$ are infected asymptomatic individuals,
 732 $I(t)$ are infected symptomatic individuals (or ‘active cases’), $H(t)$ are hospitalized individuals
 733 and $C(t)$ corresponds to the cumulative number of symptomatic infections. We assume that
 734 strict community NPIs are implemented at time $t = t_{\text{start}}$, and this is reflected as an instanta-
 735 neous reduction in the transmission rate to $\beta = \beta_{\text{strict}}$ at $t = t_{\text{start}}$ that lasts until strict NPIs
 736 are relaxed. For an elimination strategy to be necessary it is required that

737
$$\beta_{\text{mild}}(A(t_0) + I(t_0)) - \gamma((1 - h)I(t_0) + A(t_0)) - h\eta I(t_0) > 0, \quad (6)$$

738 such that when the disease establishes at $t = t_0$, it spreads, and for an elimination strategy
 739 to be feasible it is required that

740
$$\beta_{\text{strict}}(A(t_{\text{start}}) + I(t_{\text{start}})) - \gamma((1 - h)I(t_{\text{start}}) + A(t_{\text{start}})) - h\eta I(t_{\text{start}}) < 0, \quad (7)$$

741 which is necessary for cases to decrease, where $\beta = \beta_{\text{mild}}$ is the transmission rate prior to the
 742 implementation of strict NPIs. The variable $C(t)$ is cumulative symptomatic cases, and the
 743 daily change in $C(t)$ is incidence, also referred to as new cases (Figure A1(A), blue lines).

744 After the implementation of strict NPIs at time t_{start} there is a delay until active cases, $I(t)$,
 745 decline which is due to the time it takes for individuals infected just before t_{start} to develop
 746 symptoms, and the average duration of this incubation period is $1/\sigma$ (see Fig. A1). A fraction,
 747 ρ of individuals exposed do not develop symptoms, but also become infective $1/\sigma$ days after
 748 exposure. Of individuals that are active cases, a fraction h will require hospitalization, and this
 749 occurs, on average, $1/\eta$ days after becoming an active case. The average duration of hospital
 750 occupancy is $1/\delta$ days and the average duration of infectiousness for both symptomatic and
 751 asymptomatic individuals is $1/\gamma$ days.

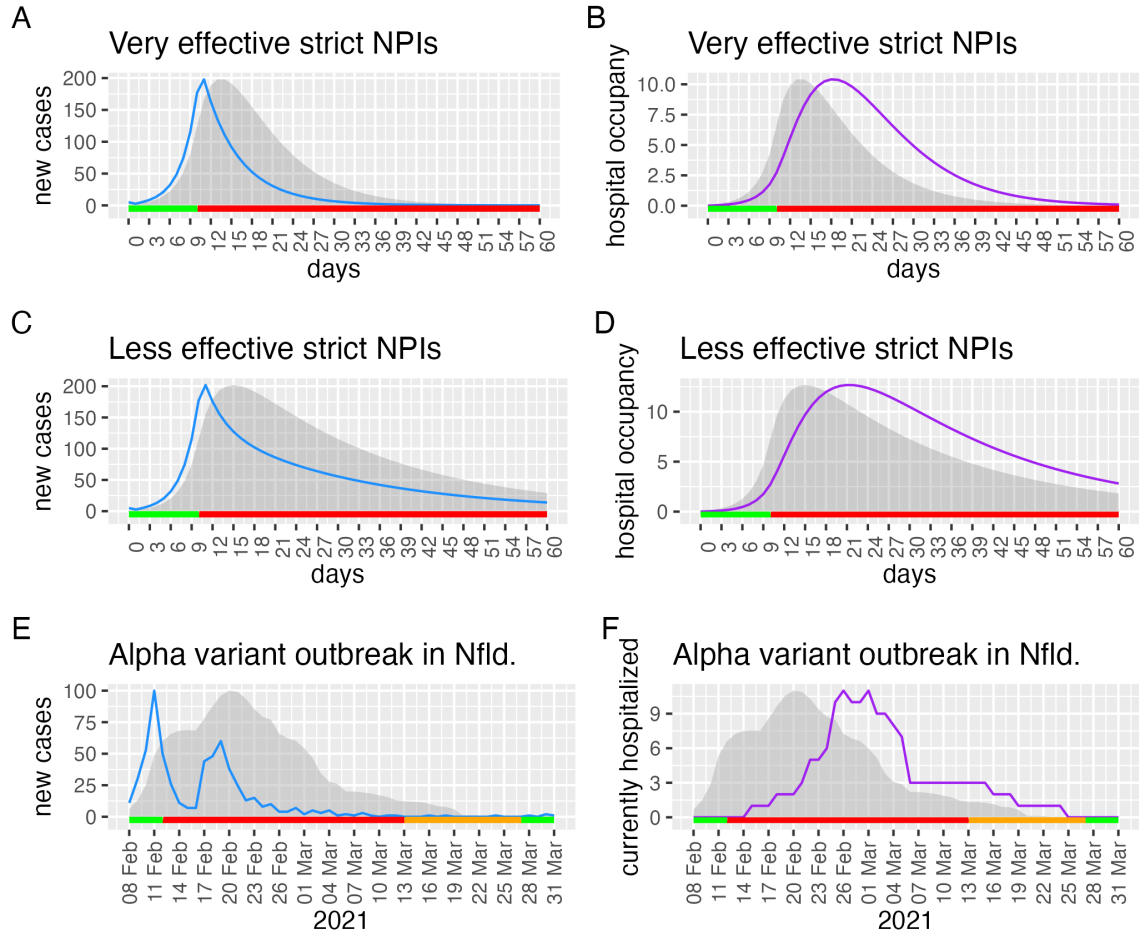


Fig. A1: The relationship between peak incidence, prevalence, and hospital occupancy. (A-D) are scenarios (Eqs. 1-5) where strict NPIs (red bars) are implemented after $t_{\text{start}} = 10$ days of mild restrictions (green bars), and are either very effective (top row, $\beta_{\text{strict}} = 0.01$) or less effective (middle row, $\beta_{\text{strict}} = 0.12$). (E-F) Data from an outbreak of the Alpha variant on the Avalon Peninsula, Newfoundland and Labrador, Canada (bottom row), with strict NPIs (red bars) implemented from February 12 - March 12, 2021 (Alert level 5 on the Avalon peninsula), moderate NPIs (orange bars) implemented from March 13 - March 26, 2021 (Alert level 4 on the Avalon peninsula), and with mild NPIs (Alert level 2 for the whole province) shown with green bars. Active cases (prevalence), $I(t)$, is scaled to have the same maximum value as incidence or hospital occupancy (A-F; grey shaded area). Maximum prevalence is $I_{\text{max}} = 547, 603$, and 434 for each of: A and B; C and D; and E and F, respectively. Peak incidence (blue lines) occurs at the same time as the implementation of strict NPIs for the scenarios (A and C), and occurs one day before the implementation of strict NPIs for the Avalon peninsula outbreak (E and F). Prevalence (grey shaded region) peaks 4, 6 and 8 days after the implementation of strict NPIs in: A and B; C and D; and E and F, respectively. For the scenarios, peak hospital occupancy (purple lines) occurs 19 (B) and 22 (D) days after the implementation of strict NPIs, and is substantially greater at 10.4 (B) and 12.7 (D) individuals relative to hospital occupancy when strict restrictions are initially implemented (2.7 individuals in both B and D). For the Alpha variant outbreak on the Avalon peninsula, hospital occupancy peaks twice with 11 people hospitalized 14 and 17 days after the implementation of strict NPIs, and with 0 people hospitalized when strict restrictions were initially implemented (F). Parameter values are: $\beta_{\text{mild}} = 2$, $\sigma = \gamma = \delta = 1/5 \text{ days}^{-1}$, $\rho = 0.3$, and $\eta = 1/2 \text{ days}^{-1}$. Initial values of the variables are: $E(t_0) = 10$, $A(t_0) = I(t_0) = C(t_0) = 5$ and $H(t_0) = 0$, with $t_0 = 0$.

752 The model is designed to investigate the timing and magnitude of peak incidence and peak
753 hospital occupancy relative to the timing of the implementation of strict NPIs and incidence

754 and hospital occupancy when strict NPIs are implemented. The formulation assumes that the
755 fraction of individuals susceptible to infection does not change, and this quantity is understood
756 to be included in the definition of β . Further assumptions include that asymptomatic and
757 symptomatic individuals are equally infectious for the same duration, symptoms and infec-
758 tiousness occur concurrently, hospitalized individuals are not infectious, and there is a general
759 lack of detail regarding contact tracing, testing, case reporting, and population heterogeneity
760 and movement in the model. Any or all of these assumptions might be relaxed, and doing
761 so is unlikely to change the main conclusions, for example, that peak incidence occurs at the
762 time when strict NPIs are implemented, peak prevalence occurs a few days later, and peak
763 hospitalization occurs a few weeks later.

764 In Melbourne, Australia, frequently peak incidence did not coincide with the implemen-
765 tation of strict NPIs [53, 108]. In considering Melbourne, Australia, there may be a violation
766 of our requirement that elimination is feasible (Eq. 7) as defined above.

767 The code to produce Fig. A1 is available at [https://github.com/ahurford/elimination-](https://github.com/ahurford/elimination-or-mitigation)
768 [or-mitigation](https://github.com/ahurford/elimination-or-mitigation).

769 **B. Frequency of community outbreaks and disease severity** 770 **for different COVID-19 variants of concern**

771 **B.1 Estimating the proportion of days with mild restrictions when im-** 772 **plementing an elimination strategy**

773 When an elimination approach to SARS-CoV-2 is applied, strict restrictions are implemented
774 to bring the number of cases back to zero whenever a community outbreak occurs, and restric-
775 tions are relaxed afterwards. We are interested in broadly estimating the expected percentage
776 of days when mild restrictions are implemented for different viral variants (i.e., the percentage
777 of ‘green’ zones during the time period characterised by T_i in Fig. 1).

778 We know that the SARS-CoV-2 Alpha variant was 1.5 more transmissible than the original
779 variant [65], that the Delta variant is 1.6 more transmissible than Alpha [129], and that the
780 Omicron variant is 3.3 more transmissible than Delta [80]. The Alpha variant arrived in
781 Canada at the end of December 2020 [114]. Newfoundland and Labrador experienced a
782 community outbreak of Alpha variant in February 2021, and no successive outbreak until
783 the end of April 2021 [27]. Therefore, we use 120 days as an estimate for the expected time
784 between community outbreaks (T_i) due to the Alpha variant. Respective estimates for other
785 variants are provided in Table B1.

786 Additionally, we consider an elimination strategy that is implemented when I_{\max} active
787 cases are already present in the community, and we calculate the time needed to reduce the
788 number of active cases from I_{\max} to I_{end} . This time interval is shown as T_e in Fig. 1, where
789 I_{\max} and I_{end} represent, respectively, the number of active cases when the outbreak is detected
790 and when strict restrictions are released. Variation in the number of active cases over time is
791 based on the infection transmission rate β and recovery rate γ , and can be formulated as:

$$792 \quad \frac{dI(t)}{dt} = I(t)(\beta - \gamma), \quad (8)$$

793 with $\beta/\gamma = R_c$ being the control reproductive number. We base our calculation on the
794 assumption that once the outbreak is detected, the number of cases decays exponentially
795 over time, where $I(t) = I_{\max}e^{\gamma(R_c-1)t}$ and $R_c < 1$ when strict measures are implemented.
796 We also assume that no other outbreak occurs during this time, and we do not account for

797 travel-related cases that do not cause community cases. We find that

$$798 \quad I_{\text{end}} = I_{\text{start}} e^{\gamma(R_c - 1)T_e} = I_{\text{end}} \iff T_e = \frac{\ln(I_{\text{start}}/I_{\text{end}})}{\gamma(1 - R_c)}. \quad (9)$$

799 We consider that the control reproduction number with strict restrictions implemented is
800 $R_c = 0.1$ for the original strain, $I_{\text{max}} = 50$ and $I_{\text{end}} = 1$ and calculate the corresponding control
801 reproduction number for different variants of concern taking into account their increased
802 transmissibility [65, 129, 80]. We consider a recovery rate of $1/7$ days⁻¹. Finally, we calculate
803 the expected percentage of days for when mild restrictions can be implemented, given an
804 elimination strategy, as

$$805 \quad \% \text{ of days with mild restrictions} = \begin{cases} \frac{T_i - T_e}{T_i} \times 100 & \text{for } T_i > T_e \\ 0 & \text{otherwise} \end{cases} \quad (10)$$

806 Estimates are provided in Table B1. Results are shown in Fig. 3.

807 **B.2 Estimating disease severity**

808 Using the estimates of hospitalization rates for different viral variants in vaccinated and unvac-
809 cinated individuals [87], and Newfoundland and Labrador vaccination rates [28], we estimate
810 the average number of hospitalizations per 1000 infections in Newfoundland and Labrador
811 when variants were established in the province [114]. Estimates are provided in Table B1 and
812 Fig. 3.

Table B1: Estimates of SARS-CoV-2 variants epidemiological characteristics in Newfoundland and Labrador (NL) used to produce Fig. 3.

	Original	Alpha	Delta	Omicron
Data of establishment in NL [7]	Mar 14, 2020	Feb 12, 2021	Apr 28, 2021	Dec 15, 2021
Percent of NL population vaccinated with one dose when the variant was established [6]	–	0.93%	26.46%	6.41%
Percent of NL population vaccinated with two doses when the variant was established [6]	–	0.78%	1.86%	85.33%
Average probability of hospitalization for unvaccinated individuals [5]	2.3%	3.84%	5.50%	1.82%
Average probability of hospitalization for individuals vaccinated with one dose [5]	–	1.79%	2.14%	1.27%
Average probability of hospitalization for individuals vaccinated with two doses [5]	–	–	1.73%	1.01%
Average hospitalizations per 1000 cases, given NL vaccination rates when the variant was established	23	38	34	11
Estimated time between community outbreaks (parameter T_i)	180 days	120 days	75 days	23 days
Estimated duration of periods of strict restrictions to bring the number of cases from 50 to 1 (i.e, parameter T_e in Eq. (9))	30 days	32 days	36 days	132 days
If elimination is implemented, estimated % of days during which mild restriction are implemented	83.1%	73.2%	52.0%	0%