

ELETRONIC SUPPLEMENTARY MATERIAL

ESM Table 1: Socio-Demographics of the Study Participants

Characteristics	Overall (N=492)	Cases (N=240)	Controls (N=252)	p-value
Gender				
Men	291 (59%)	155 (64.6%)	136 (54%)	0.011
Women	201 (41%)	85 (35.4%)	116 (46%)	
Linguistic group				
Assamese	297 (60%)	150 (62.5%)	147 (58%)	0.029
Bengali	79 (16%)	45 (18.8%)	34 (14%)	
Others	116 (24%)	45 (18.7%)	71 (28%)	
Religion				
Hindu	418 (85%)	198 (82.5%)	220 (87%)	0.190
Muslim	68 (14%)	40 (16.7%)	28 (11%)	
Others	6 (1%)	2 (0.8%)	4 (2%)	
Ethnicity				
Australoids	29 (6%)	16 (7%)	13 (5%)	0.695
Caucasoids	303 (62%)	148 (62%)	155 (62%)	
Mongoloids	160 (32%)	76 (31%)	84 (33%)	
Physical activity (N=489)				
Sedentary	129 (26%)	70 (29.5%)	59 (23%)	0.263
Light active	227 (46%)	109 (46.0%)	118 (47%)	
Moderate to highly active	130 (27%)	58 (24.5%)	72 (30%)	
Smoking	78 (16%)	33 (13.7%)	45 (18%)	0.173
Pan consumption	286 (58%)	135 (56%)	151 (60%)	0.496
Alcohol consumption	145 (30%)	61 (25.4%)	84 (33%)	0.092
Alcohol consumption > thrice a week	66 (46%)	31 (52%)	35 (42%)	0.023

Values reported as n (%); p-value calculated using chi-square tests

ESM Table 2a: Anthropometry and body composition of Cases across BMI groups

Units	Underweight (34) (M=24, W=10)	Normal (127) (M=73, W=54)	Overweight/Obese (76) (M=56, W=20)	p-value	p-value ^a
Height (cm)	159.8 (154.1-164.3)	160.7 (153.8-167.7)	162.8 (156.4-168.2)	0.32	0.06
Stunting (Men) (< 161.2 cm)	10 (40%)	19 (25%)	15 (28%)	0.81	-
Stunting (Women) (< 149.8 cm)	3 (27%)	13 (24%)	6 (30%)	0.88	-
Weight (kg)	42.9 (37.7-46.4)	57.6 (52.0-63.5)	72.5 (67.0-78.3)	<0.001	<0.001
WHR	0.90 (0.86-0.92)	0.95 (0.91-0.99)	0.99 (0.96-1.02)	<0.001	<0.001
Central Obesity Men (≥0.90)	12 (52%)	60 (84%)	56 (100%)	-	-
Central Obesity Women (≥0.85)	10 (100%)	51 (94%)	19 (95%)	-	-
Mid Arm Circumference	21.5 (18.9-23.2)	26.8 (25-28.1)	30.5 (29-32)	<0.001	<0.001
Sum of 4 Skin folds ^b (mm)	23.8 (16.3-32.3)	55.6 (43.4-68.8)	79.3 (64.7-102.7)	<0.001	<0.001
DXA Body fat %	17.1 (12.2-23.3)	28.7 (23.4-35.2)	33.3 (30.2-36.4)	<0.001	<0.001
Body Fat % Men >25%	2 (9%)	36 (54%)	47 (94%)	<0.001	-
Body Fat % Women >35%	1 (13%)	27 (54%)	13 (87%)	0.004	-
Oral anti-diabetic agents	18 (50%)	84 (65%)	49 (64%)	0.24	-
Insulin	11 (31%)	23 (18%)	7 (10%)	0.11	-

Values reported either as medians (25-75th) or as n (%); p-value calculated using ANCOVA or logistic regression as appropriate, after adjusting for age, gender, SLI and diabetes duration in years; ^a p-value for trend calculated for continuous variables; for skewed variables, ANCOVA p-values calculated for log-transformed variables; ^b Sum of 4 skin folds was calculated as Biceps + Triceps + Sub-scapular + Suprailiac skinfold measurements

ESM Table 2b: Biochemical measurements of Cases across BMI groups

Units	Underweight (34)	Normal (127)	Overweight/Obese (76)	p-value	p-value ^a
Fasting Glucose (mmol/L)	13.6 (8.1-18.2)	9.5 (7.2-13.3)	8.1 (6.7-11.8)	0.01	<0.001
Postprandial Glucose (mmol/L)	21.0 (12.4-30.6)	17.1 (13.3-20.7)	13.3 (9.6-17.9)	0.03	<0.001
HbA1c (mmol/mol)	97.8 (59.0-131.7)	84.7 (61.7-104.3)	68.3 (53.0-93.5)	0.23	0.002
HbA1c (%)	11.1 (7.5-14.1)	9.9 (7.8-11.7)	8.4 (7.0-10.7)	0.23	0.002
Cholesterol (mmol/L)	4.5 (3.2-4.6)	4.4 (3.7-5.1)	4.3 (3.8-5.1)	0.95	0.56
Triglycerides (mmol/L)	1.5 (1.1-2.2)	1.8 (1.1-2.5)	1.9 (1.3-2.9)	0.15	0.03
HDL-C (mmol/L)	1.1 (0.8-1.3)	0.9 (0.8-1.2)	0.9 (0.8-1.1)	0.01	0.02
Creatinine (µmol/L)	60.1 (53.0-79.5)	61.8 (47.7-78.7)	65.4 (53.0-75.1)	0.88	0.43
C-Peptide (nmol/L)	0.15 (0.08-0.33)	0.33 (0.12-0.55)	0.44 (0.20-0.82)	0.002	<0.001
HOMA-B	8.8 (3.2-36.3)	21.9 (11.7-39.7)	32.6 (17.4-68.6)	<0.001	<0.001
HOMA-S	160.7 (82.3-286.7)	108.8 (63.1-257.3)	86.3 (46.4-175.6)	0.03	0.007

All biological measurements on fasting plasma; values reported either as medians (25-75th) or as n (%); p-value calculated using ANCOVA or logistic regression as appropriate, after adjusting for age, gender, SLI and diabetes duration in years; ^a p-value for trend calculated for continuous variables; for skewed variables, ANCOVA p-values calculated for log-transformed variables

ESM Table 3a: Anthropometry and body composition of Controls across BMI groups

Units	Underweight (22) (M=13, W=9)	Normal (149) (M=80, W=69)	Overweight/Obese (81) (M=43, W=38)	p-value	p-value ^a
Height (cm)	161.5 (156.8-169.9)	160.8 (155.0-167.1)	162.0 (155.0-169.0)	0.51	0.72
Stunting (Men) (≤ 161.2 cm)	4 (31%)	15 (19%)	4 (9%)	0.09	-
Stunting (Women) (≤ 149.8 cm)	2 (22%)	12 (17%)	7 (18%)	0.84	-
Weight (kg)	46.4 (40.4-50.3)	57.5 (51.4-61.2)	71.5 (63.8-78.0)	<0.001	<0.001
WHR	0.86 (0.85-0.91)	0.91 (0.87-0.95)	0.94 (0.89-0.97)	<0.001	<0.001
Central Obesity Men (>0.90)	3 (23%)	50 (64%)	39 (93%)	<0.001	-
Central Obesity Women (>0.85)	8 (89%)	55 (83%)	34 (90%)	0.47	-
Mid Arm Circumference	23.1 (20.8-24.5)	27 (25.2-28.6)	30.5 (29-32.9)	<0.001	<0.001
Sum of 4 Skin folds ^b (mm)	30.5 (25.1-3.1)	50.2 (37.6-67.6)	80.8 (60.6-103.0)	<0.001	<0.001
DXA Body Fat %	21.6 (16.5-25.8)	30.5 (25.5-36.7)	35.1 (30.5-40.9)	<0.001	<0.001
Body fat % Men >25 %	1 (9%)	42 (60%)	39 (93%)	<0.001	-
Body fat % Women >35%	0 (0%)	39 (68%)	32 (100%)	<0.001	-

Values reported either as medians (25-75th) or as n (%); p-value calculated using ANCOVA or logistic regression as appropriate, after adjusting for age, gender and SLI; ^a p-value for trend calculated for continuous variables; ^b Sum of 4 skin folds was calculated as Biceps + Triceps + Sub-scapular + Suprailiac skinfold measurements

ESM Table 3b: Biochemical measurements of Controls across BMI groups

Units	Underweight (22)	Normal (149)	Overweight/Obese (81)	p-value	p-value ^a
Fasting Glucose (mmol/L)	4.7 (4.3-4.9)	4.8 (4.5-5.1)	4.7 (4.6-4.9)	0.02	0.64
Postprandial Glucose (mmol/L)	5.3 (4.9-5.7)	5.6 (5.1-6.4)	6.1 (5.2-6.6)	0.03	0.01
HbA1c (mmol/mol)	31.1 (28.9-34.4)	33.3 (31.2-35.5)	34.4 (30.1-37.7)	0.51	0.04
HbA1c (%)	5.0 (4.8-5.3)	5.2 (5.0-5.4)	5.3 (4.9-5.6)	0.51	0.04
Cholesterol (mmol/L)	3.8 (3.4-4.2)	4.1 (3.5-4.6)	4.3 (3.6-5.0)	0.11	0.003
Triglycerides (mmol/L)	0.8 (0.7-1.2)	1.0 (0.8-1.4)	1.3 (0.9-1.9)	0.008	<0.001
HDL-C (mmol/L)	1.3 (1.1-1.4)	1.1 (0.9-1.3)	1.0 (0.9-1.2)	0.002	<0.001
Creatinine (µmol/L)	55.6 (44.2-64.5)	60.9 (50.4-75.1)	68.5 (53.0-79.5)	0.01	0.01
C-Peptide (nmol/L)	0.12 (0.06-0.26)	0.22 (0.09-0.40)	0.33 (0.17-0.57)	0.04	<0.001
HOMA-B	44.9 (35.9-73.0)	64.7 (38.1-99.1)	88.4 (54.7-124.3)	0.11	0.001
HOMA-S	386.9 (178.0-657.9)	197.3 (116.7-466.4)	136.9 (81.0-273.9)	0.03	<0.001

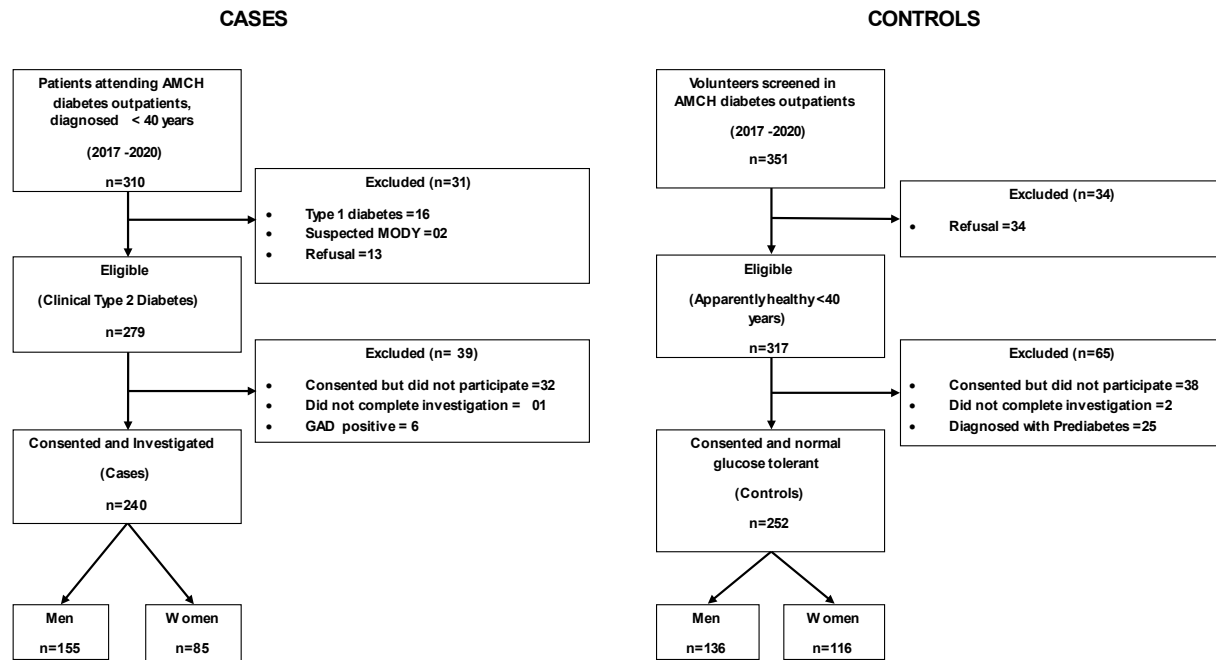
All biological measurements on fasting plasma; values reported either as medians (25-75th) or as n (%); p-value calculated using ANCOVA or logistic regression as appropriate, after adjusting for age, gender and SLI; ^a p-value for trend calculated for continuous variables; For skewed variables, ANCOVA p-values calculated for log-transformed variables

ESM Table 4: DEXA Measurements of the Study Participants

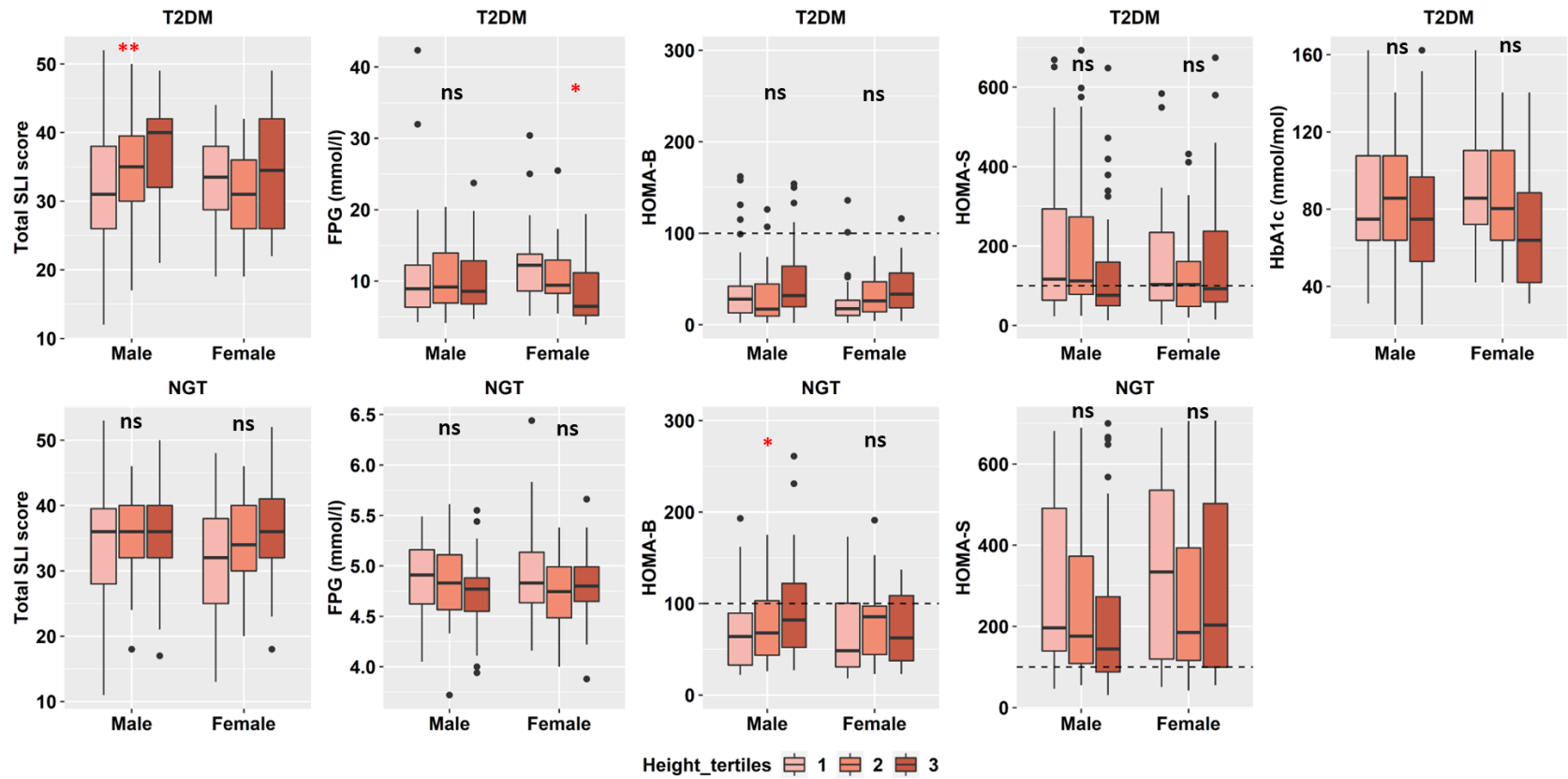
Characteristic s (Units)	Men (n=296)				Women (n=202)			
	Diabetic (n=155)	Non- Diabetic (n=136)	p1	p2	Diabetic (n=85)	Non- Diabetic (n=116)	p1	p2
A. Fat Mass Distribution								
Arms(kg)	1.7 (1.3-2.1)	1.7 (1.3-2.0)	0.97	0.30	2.0 (1.6-2.6)	2.4 (1.9-2.7)	0.05	0.10
Legs(kg)	4.4 (3.2-5.7)	4.8 (3.9-6.2)	0.03	0.87	5.0 (4.0-6.1)	6.8 (5.5-8.2)	<0.001	<0.001
Trunk(kg)	10.3 (6.2-13.2)	9.9 (6.6-12.9)	0.45	0.45	11.1 (8.7-13.5)	10.8 (8.5-13.2)	0.77	0.87
Android(kg)	1.6 (1.0-2.3)	1.5 (0.9-2.1)	0.22	0.46	1.7 (1.3-2.3)	1.7 (1.1-2.0)	0.19	0.37
Gynoid(kg)	2.1 (1.5-2.9)	2.4 (1.9-3.0)	0.06	0.44	2.7 (2.2-3.2)	3.6 (2.9-4.1)	<0.001	<0.001
B. Lean Mass Distribution								
Arms(kg)	5.1 (4.4-5.7)	5.5 (4.9-6.1)	<0.001	0.005	3.4 (2.8-4.1)	3.2 (2.9-3.7)	0.36	0.26
Legs(kg)	13.9 (12.2-15.5)	14.3 (12.6-16.6)	0.12	0.99	9.7 (8.6-11.4)	10.5 (9.4-11.7)	0.24	0.92
Trunk(kg)	21.0 (19.1-23.5)	20.4 (19.1-22.0)	0.15	0.13	16.4 (15.1-18.3)	15.8 (13.9-17.1)	0.001	0.001
Android(kg)	3.0 (2.7-3.4)	2.9 (2.6-3.1)	0.02	0.03	2.4 (2.2-2.7)	2.2 (1.9-2.4)	<0.001	<0.001
Gynoid(kg)	6.2 (5.5-6.9)	6.4 (5.9-7.1)	0.03	0.27	4.5 (4.1-5.1)	4.8 (4.3-5.2)	0.52	0.82

ESM Table 5: Comparison of Immunoreactive Trypsinogen (IRT) between Cases and Controls

	Controls (20)	Cases (50)
	Median (25 th , 75 th)	
IRT (ng/ml)	20.5 (15.5, 26.3)	24.5 (16.0, 30.5)



ESM Figure 1- Flowchart depicting participant selection and flow in the study



ESM Figure 2 - Comparison of SLI score, glycemia (FPG and HbA1c), beta cell function (HOMA-B) and insulin sensitivity (HOMA-S) by **tertiles of height** in patients with type 2 diabetes (T2DM) and controls (NGT) from Assam Medical College Hospital, Dibrugarh, India. Significance of trend across BMI categories is shown as: ns (not significant), * $p < 0.05$, ** $p < 0.01$ and *** $p < 0.001$