

Title Page

Clinical Predictors of Long-term Outcomes in C3 Glomerulopathy and Immune-Complex Membranoproliferative Glomerulonephritis within the UK RaDaR Registry

Affiliations

1. National Registry of Rare Kidney Diseases, Bristol, United Kingdom
2. University College London Department of Renal Medicine, London, United Kingdom
3. Novartis Pharma AG, Basel, Switzerland
4. Multiple affiliations
5. National Renal Complement Therapeutics Centre, Newcastle upon Tyne, United Kingdom

Correspondence to: Professor Daniel P Gale, UCL Department of Renal Medicine, Royal Free Hospital, Rowland Hill Street, London, NW3 2PF, d.gale@ucl.ac.uk.

Abstract

Background

C3 glomerulopathy (C3G) and immune-complex membranoproliferative glomerulonephritis (IC-MPGN) are rare disorders that often result in kidney failure over the long-term. While there is much interest in the therapeutic potential of complement inhibition, the limited duration and necessarily small size of controlled trials, means there is a need to define how well short-term changes in eGFR and proteinuria predict clinically important outcomes such as kidney failure. We aimed to address this using longitudinal data from the UK National Registry of Rare Kidney Diseases (RaDaR).

Methods

287 patients with biopsy-proven C3G (135, 47%) or IC-MPGN (152, 53%) were included. Analyses of kidney survival were conducted using Kaplan–Meier and Cox regression. eGFR slope was estimated using linear mixed models with random intercept and slope.

Results

85/135 (63%) C3G and 107/152 (70%) IC-MPGN patients reached kidney failure over follow-up after a median of 9.7 years (95% CI 7.6-12.4). Median time to first allograft loss following transplantation was 4.9 years (95% CI 1.7-6.5). Kidney survival was strongly associated with eGFR at baseline and 12-month timepoints ($p < 0.001$). Proteinuria at diagnosis, although high, was not associated with long-term kidney failure risk. In contrast, both a time averaged 0.44g/g (50mg/mmol) and 50% reduction in UPCR at 12 months (from either diagnosis or 6-months) was strongly associated with a lower risk of kidney failure ($p \leq 0.002$). Most notably those with a UPCR $< 0.88\text{g/g}$ ($< 100\text{mg/mmol}$) at 12 months had a substantially lower rate of progression to kidney failure (HR adjusted for eGFR 0.13 (95% CI 0.03-0.56), $p = 0.007$).

Conclusions

We quantified the relationships between early changes in both eGFR and proteinuria with long-term kidney survival. We demonstrate that proteinuria a short time after diagnosis is a strong predictor of long-term outcomes and that a UPCR $< 0.88\text{g/g}$ ($< 100\text{mg/mol}$) at 1 year is associated with a substantially lower kidney failure risk.

NOTE: This preprint reports new research that has not been certified by peer review and should not be used to guide clinical practice.

Introduction

C3 glomerulopathy (C3G) and immune-complex membranoproliferative glomerulonephritis (IC-MPGN) are rare kidney diseases in which there is glomerular inflammation resulting in increased mesangial matrix and cellularity, capillary wall thickening with deposition of immunoglobulins (in IC-MPGN) and/or complement C3 (seen in both C3G and IC-MPGN). C3G is further subdivided into C3 glomerulonephritis and dense deposit disease (DDD) based on electron micrographic appearances with DDD characterized by dense transformation of the glomerular basement membrane.¹ Presentation is usually with proteinuria and/or other features of kidney disease such as hematuria, hypertension or renal impairment. Both conditions are rare with a combined incidence of 3-5 per million population.^{2,3} Although the biopsy features of IC-MPGN can also be seen in a range of disorders in which there is sustained activation of the immune system (such as persistent infection or autoimmune disease) the diagnosis of IC-MPGN in the UK is reserved for those cases in which an underlying cause of immune activation is not identified. Although in most cases, the cause of C3G and IC-MPGN is not known, abnormal activation of the complement alternative pathway is frequently present in both disease categories. This can be attributed to the development of an autoantibody (termed a C3 Nephritic Factor) that stabilizes the active form of C3 or, less often, can result from Mendelian⁴⁻¹⁰ or non-Mendelian rare or common genetic variants¹¹⁻¹⁵ affecting innate or adaptive immunity; with comparable prevalence of variants and autoantibodies reported in both C3G and IC-MPGN.¹² Together with the presence of C3 deposited in the kidneys in almost all cases and the frequent serological evidence of C3 consumption these data have provided a compelling rationale for therapeutic targeting of the complement system in these disorders.

While the clinical presentation and diagnosis of these disorders are now well-established, long-term outcomes and prognostic features are less well understood, with the literature dominated by single center studies that may be affected by ascertainment bias. However, certain prognostic markers have consistently been shown to be associated with kidney failure (KF) in both adult and pediatric IC-MPGN and/or C3G cohorts. These include baseline eGFR along with renal biopsy findings of interstitial fibrosis and tubular atrophy, crescents and segmental sclerosis.^{12,16-19} Literature regarding baseline proteinuria is more conflicting: in a study of 156 patients with C3G or IC-MPGN baseline proteinuria >2g per day was independently associated with the composite outcome of doubling of serum creatinine or KF¹⁸. However, in a US cohort of 111 C3G and IC-MPGN patients the association of baseline proteinuria with KF was non-significant in the multivariable model.¹⁶ Finally, the C3G GLOSEN investigators

demonstrated a $\geq 50\%$ decrease in proteinuria over course of follow-up or within 6 and 12 months was associated with lower risk of KF.²⁰

While case series and small observational studies have suggested a potential benefit of corticosteroids and mycophenolate, it is not known why some patients respond and others do not, and long-term outcomes remain poor.^{21,22} The community therefore awaits with great expectation the results of several ongoing complement inhibition trials. However, interpreting the potential clinical impact of an intervention based on evidence of efficacy in a short (i.e. 0.5-2 year) clinical trial in rare diseases is often hampered by lack of direct data demonstrating efficacy in reducing a key clinically relevant outcome such as KF.²³ Therefore, data to inform appraisal of the likely clinical impact of early and intermediate surrogate end points (such as proteinuria and short-term changes in eGFR) on long-term outcomes (such as KF) are needed by the nephrology community.^{23,24}

To address this need, here we use longitudinal data from 287 patients with C3G and IC-MPGN enrolled in the UK National Registry of Rare Kidney Diseases (RaDaR) to analyze quantitatively the relationships between the clinical parameters of proteinuria and eGFR early in the disease course with the clinically important outcome of KF over the long-term.

Methods

Data source

RaDaR recruits patients from 108 NHS sites and has linkage with hospital laboratories for routine blood and urine test results via the UK Renal Data Collaboration, and with the UK Renal Registry for validated data on initiation of kidney replacement therapy (KRT) and death, which includes data provided by NHS Blood and Transplant. Patients provide written informed consent at time of recruitment. Details of recruitment characteristics and analyses of potential biases are discussed elsewhere.²⁵

Inclusion criteria for RaDaR are: Child or adult with histological finding of: MPGN Type I; dense deposit disease (morphological pattern may or may not be MPGN); Other pattern of MPGN; C3 glomerulonephritis (characterized by C3 deposits in the absence of immunoglobulin with electron dense deposits (morphological pattern may or may not be MPGN); Unclassified GN with capillary wall

immune deposits. Exclusions were: MPGN known to be secondary to: chronic bacterial infection; Hepatitis B or C virus infection; malignancy; systemic lupus erythematosus (by ACR criteria).

Study population

All prevalent patients recruited to RaDaR with one of the above diagnoses were extracted on 25th July 2022. Patients with a confirmed diagnosis of C3G (DDD/ C3 glomerulonephritis) or IC-MPGN were identified by histopathological or clinical records; all other patients were excluded from these analyses, including those where review of available records did not allow unambiguous classification as C3G or IC-MPGN. 118/287 included, had undergone central histopathology review for a recent pediatric-specific observational study.¹⁷ Patients with a known paraprotein were excluded.

Variable and outcome definitions

Date of diagnosis was defined as date of kidney biopsy recorded in RaDaR. eGFR was calculated from creatinine results using CKD-EPI (2009) without adjustment for race, or Schwartz equation for those ≤ 16 years.^{26,27} KF was defined as initiation of KRT or sustained $eGFR \leq 15 \text{ mL/min/1.73m}^2$ for ≥ 4 weeks.²⁸ Follow-up time was defined as time between date of diagnosis and last available test result, KF, or death. Time of diagnosis window was defined as 3-months prior to and 3-months post diagnosis.

Statistical Analyses

Supplemental Figure 1 details patients excluded from each analysis. Categorical data were reported as frequencies (%) and medians (interquartile range) for non-normally distributed continuous data. Kaplan-Meier survival analyses were used to compare time to KF for patients with C3G and IC-MPGN, stratified by level of proteinuria or CKD stage 1&2, 3, and 4. Cox regression analyses were used to investigate association between long-term risk of KF and change in urine protein creatinine ratio (UPCR) over time, comparing diagnosis, 6-month, and 12-month timepoints. Percentage change in UPCR and Time Averaged UPCR (TA-UPCR) were examined and adjusted for eGFR at each time point.

Annualized rate of eGFR loss (eGFR slope) was calculated for the first 24 months following diagnosis and over duration of follow-up. A linear mixed model was used to estimate each patient's intercept

and eGFR slope using a minimum of four observations. Cox regression was used to investigate association of CKD stage, eGFR percentage change and 24-month eGFR slope with long-term risk of KF.

Analyses were performed using SAS version 9.4.

Ethics

This report adheres to the Strengthening the Reporting of Observation Studies in Epidemiology (STROBE) statement.²⁹ RaDaR has ethical approval as a research registry provided by NHS South West Central Bristol Research ethics committee (14/SW/1088) and by the RaDaR and UKRR operational committees.

Results

Study Cohort

287 patients were included in these analyses, 135 (47%) with a diagnosis of C3G and 152 (53%) with a diagnosis of IC-MPGN. Median follow-up time was 5.8 years (IQR 2.9-11.0) for C3G and 6.8 years (1.8-11.4) for IC-MPGN.

Demographics and baseline characteristics

Within the cohort 65/135 patients with C3G (48%), and 79/152 patients with IC-MPGN (52%) were male. Most participants in both cohorts were white (C3G 74%, IC-MPGN 79%). For individuals with C3G, median age at diagnosis was 14 years (IQR 9-34 years) and median eGFR at diagnosis was 70mL/min/1.73 m² (IQR 30-92 mL/min/1.73 m²); for patients with IC-MPGN median age was 23 years (IQR 9-55 years) and median eGFR was 58mL/min/1.73 m² (IQR 40-110 mL/min/1.73 m²) (Table 1). 61% of patients with C3G and 47% of patients with IC-MPGN were pediatric (≤ 18 years old) at time of diagnosis. Both groups had significant proteinuria at baseline (median (IQR) UPCR for C3G 3.62g/g (1.11-6.16)/412 mg/mmol (126-700), IC-MPGN 4.1 g/g (1.47-7.22)/466 mg/mmol (167-820)).

Medications

At the time of diagnosis 141/287 (49%) had medication data available, 71 (50%) C3G patients and 70 (50%) IC-MPGN patients. For initial treatment 82 (58%) patients received RAS blockade and 65 (46%) received corticosteroids. Changes in medications over course of follow-up (1st, 2nd and 3rd line) are presented in Figure 1.

Kidney Replacement Therapy (KRT)

Including patients receiving KRT at diagnosis, 8/60 (13.3%) of patients with C3G and 14/60 (23.3%) of patients with IC-MPGN received a pre-emptive kidney transplant as first KRT modality. Most patients began KRT on maintenance hemodialysis (78% with C3G and 72% with IC-MPGN). Median time from diagnosis to kidney transplantation was 11.8 and 17.6 years ($p=0.11$) for C3G and IC-MPGN respectively. Over the follow-up period 43/135 (31.9%) C3G patients and 37/152 (24.3%) MPGN patients underwent at least one kidney transplant. Median time from transplantation to 1st graft failure was 4.9 years (95% CI 1.7-6.5) with figures of 5.6 years (2.2-8.9) for C3G and 3.4 years (0.7-6.0) for IC-MPGN ($p=0.20$). Median time to KF for subsequent transplants in combined cohort was 3 years (95% CI 0.7-5.7).

Factors associated with kidney failure (KF)

85/135 (63%) of patients with C3G and 107/152 (70%) of patients with IC-MPGN reached KF during follow-up. Excluding patients receiving KRT at time of diagnosis, there was no statistically significant difference in either annual mean eGFR decline (4.9 vs 3.3 mL/min/1.73m²/year $p=0.20$; adjusted for eGFR at baseline) nor median time to KF (9.3 vs 12.0 years $p=0.31$), with comparable kidney survival demonstrated in Figure 2. For this reason, all subsequent analyses were conducted on the combined cohort with analyses for C3G and IC-MPGN presented separately as supplemental data.

In the combined cohort we found no significant association for either age at diagnosis or serum C3 and C4 levels with KF events in univariate or multivariable analyses ($p>0.34$). However, median (95% confidence interval (CI)) time to KF was 6.8 years (4.5-8.5) for adult and 12.9 years (10.7-17.9) for pediatric patients ($p<0.001$). Kidney survival was strongly associated with eGFR at baseline and 12-month timepoints (log-rank $p<0.001$) (Supplemental Figure 2A) and varied by CKD stage at

presentation: median time to KF 12.9 years for CKD1&2; 5.8 years for CKD3a; 3.6 years for CKD3b; and 1.5 years CKD 4 ($p < 0.001$). C3G and IC-MPGN specific analyses showed similar results (Supplemental Figure 2B and 2C). For the combined cohort a baseline eGFR ≥ 60 mL/min/1.73 m² was associated with a lower risk of KF than 30-60 mL/min/1.73 m² with stronger association seen at 6-month (HR 0.26 (0.12-0.60) $p = 0.001$) and 12-month timepoints (HR 0.33 (0.14-0.75); $p = 0.009$) than at presentation (HR 0.39 (95% CI 0.19-0.80); $p = 0.01$). Of those with follow-up data, 72 of 112 (64%) retained an eGFR ≥ 60 mL/min/1.73 m² 12 months after diagnosis.

Changes in eGFR within the first 2 years of diagnosis were also associated with KF: for example, compared with a slope of 0 mL/min/1.73 m²/year, an annual slope of +2 mL/min/1.73 m² over the first 2 years was associated with lower risk of KF (HR 0.91 (95% CI) (0.83-0.99)), and slope of -6 mL/min/1.73 m²/year was associated with higher risk of KF (HR 1.33 (1.03-1.73)). Similarly, a decline in eGFR by 15% and 25% at 2 years was associated with a higher risk of KF (HR 1.27 (1.06-1.52) and HR 1.49 (1.11-2.02) respectively) (Figure 3; Supplemental Figure 3 for disease specific analyses).

At diagnosis, proteinuria levels in this cohort were high (median (IQR) 3.89 (1.23-7.20) g/g (442 (140-818) mg/mmol)) (Table 1), but there was no association detected with long-term KF risk ($p > 0.2$). In contrast, UPCR at 12 months (median (IQR) 0.93 (0.18-3.13) g/g (106 (20-356) mg/mmol)) was strongly associated with this outcome ($p < 0.001$) (Figure 4; Supplemental Figure 4 for disease specific analyses). This is perhaps explained by differences in early disease course within the cohort, with 41/75 (55%) exhibiting a $\geq 50\%$ reduction and 55/77 (68%) a $\geq 25\%$ reduction in UPCR within 6 months of diagnosis (Supplemental Figure 5). While a reduction in absolute TA-UPCR of 0.44g/g (50mg/mmol) at 6 months was significantly associated with reduced KF risk (HR adjusted for eGFR (95% CI) 0.94 (0.90, 0.99)), analysis using a 50% reduction at 6 months did not reach statistical significance (HR 1.09 (0.73-1.63); Table 2). In contrast, both a time averaged 0.44g/g (50mg/mmol) and 50% reduction in UPCR (from either the diagnosis or 6-month figure) at 12 months were strongly associated with a lower long-term risk of KF ($p \leq 0.002$; Table 2). Similarly, 20-50% changes in UPCR at 12 months (compared with either diagnosis or 6-month figure) were strongly associated with KF (Figure 3; Supplemental Figure 3 for disease specific analyses). Regardless of the starting UPCR, a particularly striking finding was that in those patients whose UPCR was < 0.88 g/g (< 100 mg/mmol) at 12 months there was a very substantial reduction in KF events (HR adjusted for eGFR 0.13 (95% CI 0.03-0.56)). Similar findings were seen in the C3G cohort (HR 0.12 (0.02-0.62)) and there were no KF events in those in the IC-MPGN cohort with UPCR < 0.88 g/g (< 100 mg/mmol) at 12 months.

Discussion

Herein we present long-term longitudinal data from a cohort of 287 IC-MPGN and C3G patients within UK National Registry of Rare Kidney Diseases (RaDaR). We provide insights into the natural history of these disorders by quantifying the association of changes in short-term proteinuria and eGFR assessments with KF hazard over the long-term. We present combined analyses of both C3G and IC-MPGN given known overlapping pathogenesis, specifically alternative pathway dysregulation and thus suitability for inclusion in targeted therapy trials^{11,12} but also report data in each category separately as reference material. A particular strength of this study is the duration of follow-up, with median 6.2 years (IQR 2.1-11.3) and 192/287 (67%) reaching KF over the duration of study illustrating, as previously reported, there is a significant unmet need for effective treatments in these disorders that cause KF at a young age. This is compounded by the short time to 1st allograft loss (median 4.9 years (CI 1.7-6.5) compared with 84-87% five year graft survival for (adult or pediatric) deceased donor recipients in the UK.^{30,31} Additionally, we used a range of measures to examine changes in proteinuria and eGFR across different timepoints. Consistent with previous studies we demonstrate no significant difference in time to KF between C3G and IC-MPGN patients.^{12,32} Indeed, these similar outcomes prevailed despite earlier age of diagnosis and better baseline kidney function in the C3G cohort. We demonstrate, as shown previously, that eGFR and proteinuria are strongly associated with long-term outcomes.^{18,20} However, our analysis also showed stronger relationships of these parameters at 6-24 months with long-term risk of KF, with the predictive value of proteinuria (and changes in proteinuria) particularly significant. We show associations between both eGFR percentage change and eGFR slope at 2 years and KF. However, whilst we are confident in direction of the associations of the GFR slope analysis, the confidence intervals are wide and approach one, suggesting a larger cohort is needed to reliably determine how strongly intermediate eGFR slope may influence long-term clinical outcomes. Inclusion of histological markers of chronicity in subsequent analyses could potentially improve the accuracy of these predictions.

Owing to the pressing need for effective therapies across a range of rare glomerular and other types of rare kidney disease,²² there has been much interest recently in establishment of endpoints, amenable to study in relative short duration trials with limited numbers of participants, that can serve as reliable surrogates for hard kidney outcomes and thus inform regulatory decisions and use of healthcare resources. Both observational data and meta-analyses of controlled trial treatment effects have supported the use of proteinuria in the context of chronic kidney disease³³ and IgA nephropathy.^{34,35} Subsequently, therapies in IgA nephropathy that demonstrate a short-term reduction

in proteinuria in clinical trials can now apply for accelerated approval by the US Federal Drug Administration. Our study complements existing published work, for example from 85 C3G patients within GLOSEN registry, which demonstrated that a $\geq 50\%$ reduction in proteinuria at 12 months was associated with a lower risk of KF (HR 0.83 CI (0.69–0.95)). We further extend this work and demonstrate that smaller reductions in proteinuria i.e. 20-50% are also associated with lower risk of KF. Additionally, using the time averaged proteinuria metric we were also able to show a proteinuria reduction by as little as 0.44g/g (50mg/mmol) by 12 months was also associated with lower risk of KF. Finally, achieving a threshold UPCR of $<0.88\text{g/g}$ ($<100\text{mg/mmol}$) by 12 months was particularly strongly associated with lower rate of KF events (HR 0.13 (95% CI 0.03-0.56); $p=0.007$) suggesting that, if proteinuria is shown in clinical trials to be reduced to similarly low levels by therapies that act by reducing disease activity, it is logical to infer that long-term KF hazard will be similarly reduced, supporting the use of this accessible end-point in future trials as a surrogate for KF.

Our findings must be considered in the context of the limitations inherent in registry studies including incomplete data. The latter is somewhat mitigated through data linkages with UK Renal Registry and NHS Blood and Transplant which provide validated long-term KF endpoints for all UK patients. Ascertainment bias due to enrollment of those with more progressive disease is probable, however these conditions are extremely rare affecting 3-5 per million population.² Finally, our study is most representative of the population and clinical practice patterns in the UK, and as such outcomes may not be transportable to other settings. That said we saw significant heterogeneity in treatment approaches, likely reflecting the absence of an effective disease modifying agent and potentially mitigating this confounder.

In conclusion, using real-world longitudinal data from RaDaR, we provide quantitative descriptions of the relationships between early changes in both eGFR and proteinuria, and long-term renal outcomes. Across a range of measures, we demonstrate that proteinuria a short time after diagnosis is a strong predictor of long-term outcomes and most notably that UPCR $<0.88\text{g/g}$ ($<100\text{mg/mol}$) at 1 year is associated with substantially lower risk of progressing to KF.

Disclosures

CP and NW are employees and shareholders of Novartis AG who part funded the analysis. EKSU declares receiving fees for consulting and presenting from Novartis, Apellis, Alexion, Arrowhead and Biocryst. DPG declares support for the current manuscript from St Peter's Trust for Kidney Bladder and Prostate Research, Novartis AG, Medical Research Council, Kidney Research UK, Kidney Care UK, and Polycystic Kidney Disease Charity (payments to institution), chairs the Rare Diseases Committee of the UKKA and has received fees for consulting and presenting from Novartis, Alexion, Calliditas, Sanofi, Britannia and Travere. All other authors declare no competing interests as they relate to the current manuscript.

Sources of Support

RaDaR has received support from The UK Medical Research Council, Kidney Research UK, Kidney Care UK, and the Polycystic Kidney Disease Charity. This work was partly supported by Novartis Pharma AG.

Acknowledgements

The authors thank all RaDaR participants, their family members and the UK Renal Registry staff. RaDaR is funded by the UK Medical Research Council, Kidney Research UK, Kidney Care UK, and the Polycystic Kidney Disease Charity.

Authors Contributions

DPG conceived the study and acquired funding. SM, KW, ED, and DP curated data, performed formal analyses, accessed, and verified the data. DPG and SM wrote the initial draft. EW, CP, and NW assisted with analysis and reviewed and edited the manuscript. DPG and SM had final responsibility to submit for publication.

Data availability

The RaDaR database is hosted by the UK Renal Registry and its metadata are available via <https://rarerenal.org>. Individual-level data are not available for export. Proposals to perform analyses using the data for academic, audit or commercial purposes can be made to the RaDaR Operations Group via <https://rarerenal.org>.

References

1. Pickering MC, D'agati VD, Nester CM, et al. C3 glomerulopathy: consensus report. *Kidney international*. 2013;84(6):1079-1089.
2. Briganti EM, Dowling J, Finlay M, et al. The incidence of biopsy-proven glomerulonephritis in Australia. *Nephrology Dialysis Transplantation*. 2001;16(7):1364-1367.
3. Sethi S, Zand L, Leung N, et al. Membranoproliferative glomerulonephritis secondary to monoclonal gammopathy. *Clinical journal of the American Society of Nephrology: CJASN*. 2010;5(5):770.
4. Gale DP, De Jorge EG, Cook HT, et al. Identification of a mutation in complement factor H-related protein 5 in patients of Cypriot origin with glomerulonephritis. *The Lancet*. 2010;376(9743):794-801.
5. Malik TH, Lavin PJ, de Jorge EG, et al. A hybrid CFHR3-1 gene causes familial C3 glomerulopathy. *Journal of the American Society of Nephrology: JASN*. 2012;23(7):1155.
6. Chen Q, Wiesener M, Eberhardt HU, et al. Complement factor H-related hybrid protein deregulates complement in dense deposit disease. *The Journal of clinical investigation*. 2014;124(1):145-155.
7. Tortajada A, Yébenes H, Abarrategui-Garrido C, et al. C3 glomerulopathy-associated CFHR1 mutation alters FHR oligomerization and complement regulation. *The Journal of clinical investigation*. 2013;123(6):2434-2446.
8. Ault BH, Schmidt BZ, Fowler NL, et al. Human factor H deficiency. *Journal of Biological Chemistry*. 1997;272(40):25168-25175.
9. Martínez-Barricarte R, Heurich M, Valdes-Cañedo F, et al. Human C3 mutation reveals a mechanism of dense deposit disease pathogenesis and provides insights into complement activation and regulation. *The Journal of clinical investigation*. 2010;120(10):3702-3712.
10. Chauvet S, Roumenina LT, Bruneau S, et al. A familial C3GN secondary to defective C3 regulation by complement receptor 1 and complement factor H. *Journal of the American Society of Nephrology: JASN*. 2016;27(6):1665.
11. Servais A, Noël L-H, Roumenina LT, et al. Acquired and genetic complement abnormalities play a critical role in dense deposit disease and other C3 glomerulopathies. *Kidney international*. 2012;82(4):454-464.
12. Iatropoulos P, Noris M, Mele C, et al. Complement gene variants determine the risk of immunoglobulin-associated MPGN and C3 glomerulopathy and predict long-term renal outcome. *Molecular immunology*. 2016;71:131-142.
13. Bu F, Borsa NG, Jones MB, et al. High-throughput genetic testing for thrombotic microangiopathies and C3 glomerulopathies. *Journal of the American Society of Nephrology: JASN*. 2016;27(4):1245.
14. Levine AP, Chan MM, Sadeghi-Alavijeh O, et al. Large-scale whole-genome sequencing reveals the genetic architecture of primary membranoproliferative GN and C3 glomerulopathy. *Journal of the American Society of Nephrology: JASN*. 2020;31(2):365.
15. Afolabi H, Zhang BM, O'Shaughnessy M, Chertow GM, Lafayette R, Charu V. The Association of Class I and II Human Leukocyte Antigen Serotypes With End-Stage Kidney Disease Due to Membranoproliferative Glomerulonephritis and Dense Deposit Disease. *American Journal of Kidney Diseases*. 2024;83(1):79-89.
16. Bomback AS, Santoriello D, Avasare RS, et al. C3 glomerulonephritis and dense deposit disease share a similar disease course in a large United States cohort of patients with C3 glomerulopathy. *Kidney international*. 2018;93(4):977-985.
17. Wong EK, Marchbank KJ, Lomax-Browne H, et al. C3 glomerulopathy and related disorders in children: etiology-phenotype correlation and outcomes. *Clinical Journal of the American Society of Nephrology*. 2021;16(11):1639-1651.
18. Lomax-Browne HJ, Medjeral-Thomas NR, Barbour SJ, et al. Association of histologic parameters with outcome in C3 glomerulopathy and idiopathic immunoglobulin-associated membranoproliferative glomerulonephritis. *Clinical Journal of the American Society of Nephrology*. 2022;17(7):994-1007.
19. Caravaca-Fontan F, Trujillo H, Alonso M, et al. Validation of a histologic scoring index for C3 glomerulopathy. *American Journal of Kidney Diseases*. 2021;77(5):684-695. e1.
20. Caravaca-Fontán F, Díaz-Encarnación M, Cabello V, et al. Longitudinal change in proteinuria and kidney outcomes in C3 glomerulopathy. *Nephrology Dialysis Transplantation*. 2022;37(7):1270-1280.
21. Caravaca-Fontán F, Díaz-Encarnación MM, Lucientes L, et al. Mycophenolate mofetil in C3 glomerulopathy and pathogenic drivers of the disease. *Clinical journal of the American Society of Nephrology: CJASN*. 2020;15(9):1287.
22. Wong K, Pitcher D, Braddon F, et al. Disproportionate Impact of Rare Kidney Diseases on Kidney Failure: Longitudinal Analysis of the UK National Registry of Rare Kidney Diseases (RaDaR) Cohort. *Lancet*. 2024;(in press)

23. Levey AS, Gansevoort RT, Coresh J, et al. Change in albuminuria and GFR as end points for clinical trials in early stages of CKD: a scientific workshop sponsored by the National Kidney Foundation in collaboration with the US Food and Drug Administration and European Medicines Agency. *American journal of kidney diseases*. 2020;75(1):84-104.
24. Stevens LA, Greene T, Levey AS. Surrogate end points for clinical trials of kidney disease progression. *Clinical Journal of the American Society of Nephrology*. 2006;1(4):874-884.
25. Wong K, Pitcher D, Braddon F, et al. The National Registry of Rare Kidney Diseases (RaDaR): Description, recruitment, and cross-sectional analyses of 25,880 adults and children with rare kidney diseases in the UK. *medRxiv*. 2023:2023.09. 24.23296009.
26. Levey AS, Stevens LA, Schmid CH, et al. A new equation to estimate glomerular filtration rate. *Annals of internal medicine*. 2009;150(9):604-612.
27. Schwartz GJ, Mun A, Schneider MF, et al. New equations to estimate GFR in children with CKD. *Journal of the American Society of Nephrology*. 2009;20(3):629-637.
28. Levin A, Agarwal R, Herrington WG, et al. International consensus definitions of clinical trial outcomes for kidney failure: 2020. *Kidney international*. 2020;98(4):849-859.
29. Von Elm E, Altman DG, Egger M, Pocock SJ, Gøtzsche PC, Vandenbroucke JP. The Strengthening the Reporting of Observational Studies in Epidemiology (STROBE) statement: guidelines for reporting observational studies. *The Lancet*. 2007;370(9596):1453-1457.
30. NHS. Blood and Transplant (2019) Annual Report on Kidney Transplantation: Report for 2018/19 Available from <http://www.odt.nhs.uk/uk-transplant-registry/organ-specificreports/> [Accessed 3rd January 2024].
31. NHS. Blood and Transplant (2014) Annual Report on Kidney Transplantation: Report for 2013/14 Available from <http://www.odt.nhs.uk/uk-transplant-registry/organ-specificreports/> [Accessed 3rd January 2024].
32. Khandelwal P, Bhardwaj S, Singh G, Sinha A, Hari P, Bagga A. Therapy and outcomes of C3 glomerulopathy and immune-complex membranoproliferative glomerulonephritis. *Pediatric Nephrology*. 2021;36:591-600.
33. Heerspink HJ, Greene T, Tighiouart H, et al. Change in albuminuria as a surrogate endpoint for progression of kidney disease: a meta-analysis of treatment effects in randomised clinical trials. *The lancet Diabetes & endocrinology*. 2019;7(2):128-139.
34. Thompson A, Carroll K, Inker LA, et al. Proteinuria reduction as a surrogate end point in trials of IgA nephropathy. *Clinical journal of the American Society of Nephrology: CJASN*. 2019;14(3):469.
35. Inker LA, Mondal H, Greene T, et al. Early change in urine protein as a surrogate end point in studies of IgA nephropathy: an individual-patient meta-analysis. *American Journal of Kidney Diseases*. 2016;68(3):392-401.

Table 1. Baseline characteristics and clinical outcomes for 287 C3G and IC-MPGN patients

	C3G		IC-MPGN	
	N=135	(%)	N=152	(%)
Age at diagnosis(years)				
Median (IQR)	14 (9 - 34)		23 (9 - 55)	
Pediatric	82	(61)	71	(47)
Sex				
Female	70	(52)	73	(48)
Male	65	(48)	79	(52)
Ethnicity				
White	100	(74)	120	(79)
Median follow up duration				
Median (IQR), years	5.8 (2.9 - 11.4)		6.8 (1.8 - 11.0)	
UPCR (Median IQR, g/g)				
Diagnosis	3.62 (1.11 - 6.16)		4.10 (1.50 - 7.21)	
6-month	1.32 (0.62 - 3.84)		0.81 (0.25 - 2.23)	
12-month	1.13 (0.22 - 3.63)		0.69 (0.16 - 2.74)	
eGFR at diagnosis				
Median (IQR), mL/min/1.73 m ²	70 (30 - 92)		58 (40 - 110)	
Serum albumin at baseline				
Median (IQR), g/dL	3.1 (2.3 - 3.9)		2.9 (2.2 - 3.6)	
Complement C3 levels at diagnosis				
Median (IQR), g/L	0.26 (0.12 - 0.47)		0.64 (0.20 - 0.94)	
Complement C4 levels at diagnosis				
Median (IQR), g/L	0.19 (0.14 - 0.30)		0.14 (0.09 - 0.23)	
Kidney Failure event				
Yes	85	(63)	107	(70)
No	50	(37)	45	(30)
eGFR slope				
Mean (95% CI), mL/min/1.73m ² /year	-4.9 (-7.0, -2.9)		-3.3 (-4.6, -2.1)	

*eGFR slope adjusted for eGFR at baseline

Table 2. UPCR changes and hazard ratio of kidney failure combined cohort, IC-MPGN and C3G

Combined C3G and IC-MPGN		50% decline in UPCR and hazard ratio of KF			0.44g/g (50mg/mmol) reduction in time averaged UPCR and hazard ratio of KF		
Timepoint from	Timepoint to	N	Adjusted HR*	P value	N	Adjusted HR*	P value
Diagnosis	6 months	49	1.09 (0.73 - 1.63)	0.67	42	0.94 (0.90 - 0.99)	0.01
Diagnosis	1 year	39	0.33 (0.17 - 0.63)	<0.001	43	0.66 (0.53 - 0.83)	<0.001
6 months	1 year	43	0.85 (0.76 - 0.94)	0.002	51	0.71 (0.59 - 0.85)	<0.001
IC-MPGN only cohort							
Timepoint from	Timepoint to	N	Unadjusted HR**	P value	N	Unadjusted HR**	P value
Diagnosis	6 months	27	0.83 (0.63 - 1.11)	0.22	18	1.00 (0.90 - 1.11)	0.99
Diagnosis	1 year	18	0.13 (0.02 - 0.76)	0.02	18	0.95 (0.86 - 1.06)	0.35
6 months	1 Year	19	0.74 (0.48 - 1.15)	0.19	21	0.91 (0.77 - 1.06)	0.22
C3G only cohort							
Timepoint from	Timepoint to	N	Unadjusted HR**	P value	N	Unadjusted HR**	P value
Diagnosis	6 months	30	1.04 (0.55 - 1.98)	0.90	24	0.97 (0.93 - 1.01)	0.15
Diagnosis	1 year	29	0.48 (0.28 - 0.84)	0.009	26	0.91 (0.82 - 1.00)	0.05
6 months	1 Year	29	0.86 (0.77 - 0.95)	0.005	30	0.75 (0.55 - 1.03)	0.08

*Adjusted for eGFR ml/min/1.73 m² at both timepoints ** No adjustment possible due to small numbers

Figure 1. Sankey plot for patients' medication treatment lines for 141 IC-MPGN and C3G patients

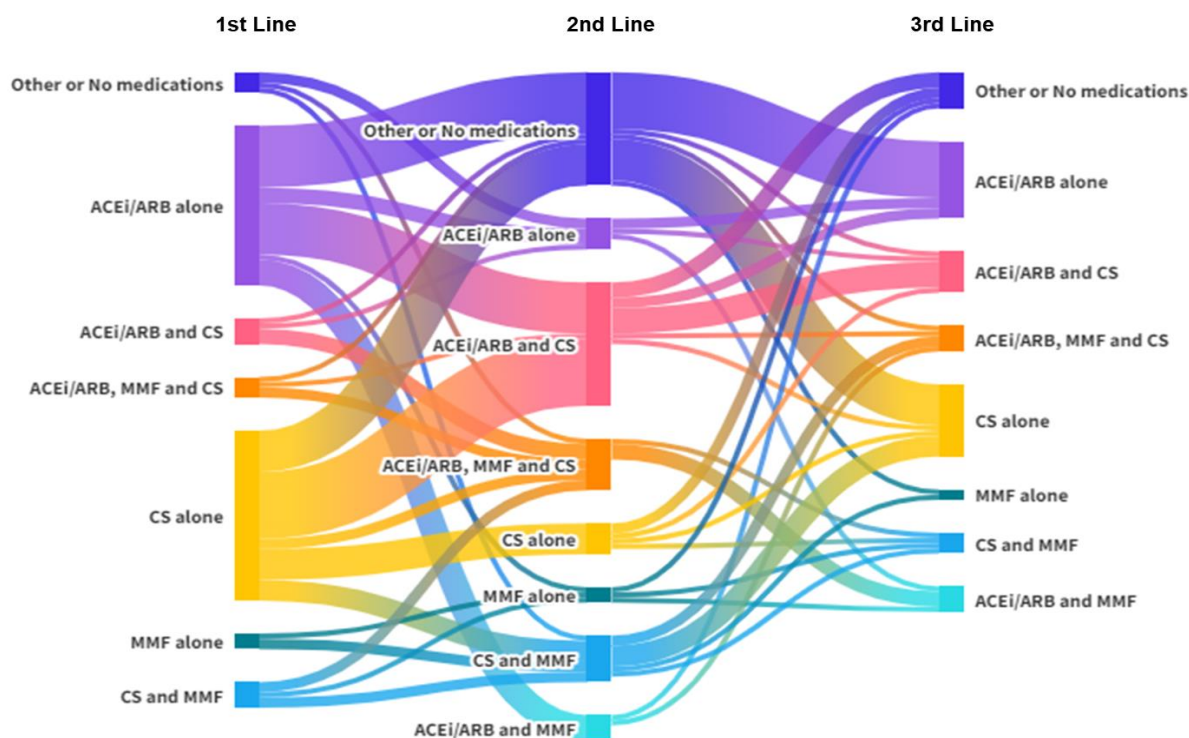


Figure 2. Kaplan-Meier of kidney survival for 117 IC-MPGN and 105 C3G patients

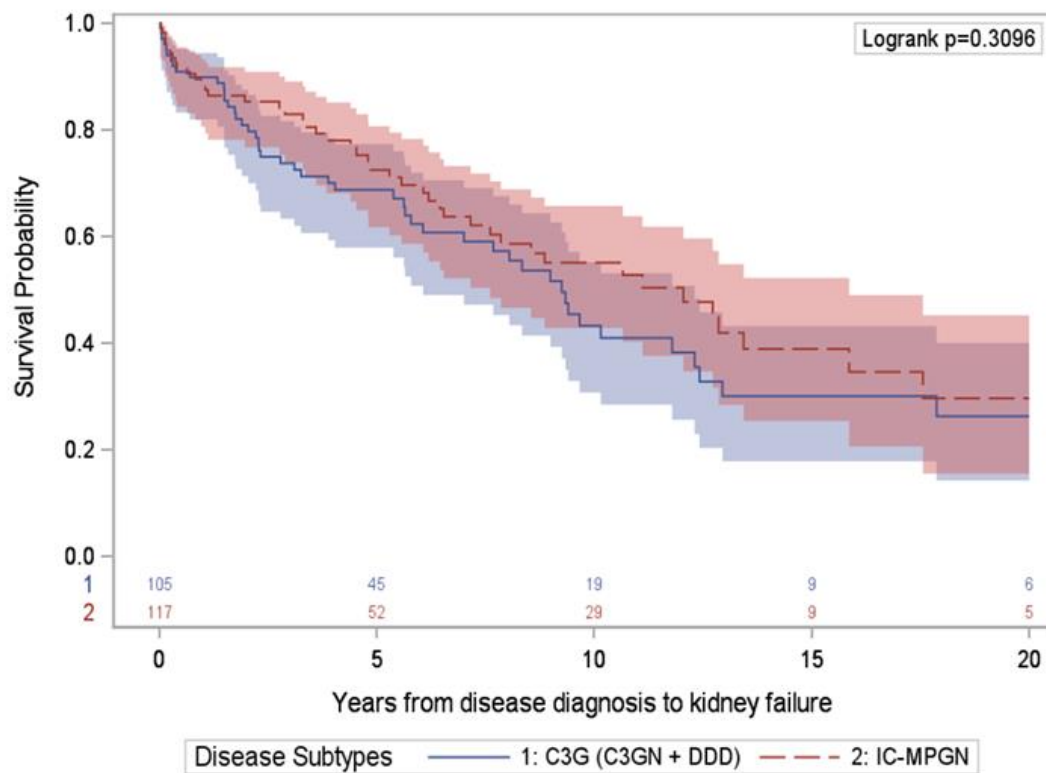
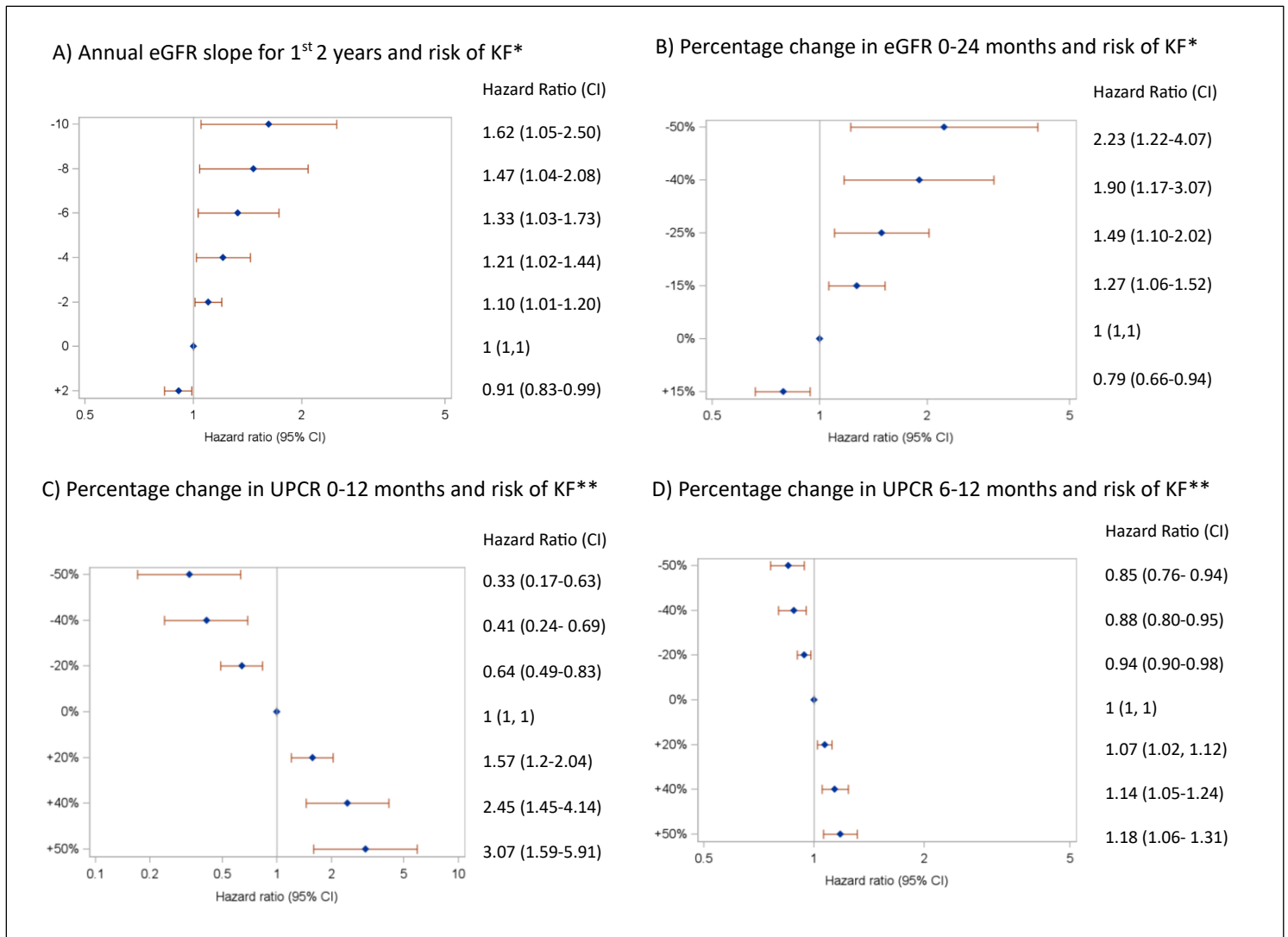


Figure 3. Forest plots of UPCR and eGFR changes within 24 months of diagnosis and hazard ratio of kidney failure (KF) for IC-MPGN and C3G combined



* Adjusted for eGFR mL/min/1.73m² at baseline **Adjusted for eGFR mL/min/1.73m² at both timepoints.

Figure 4. Kaplan-Meier of kidney survival by UPCR at 12 months for the combined cohort

