

1 **Supplementary materials**

2 **Epidemiological model can forecast COVID-19 outbreaks from wastewater-based**
3 **surveillance in rural communities.**

4 Tyler Meadows, Erik R. Coats, Solana Narum, Eva Top, Benjamin J. Ridenhour, Thibault
5 Stalder

6
7 **Variance analysis**

8 We tested if the variance of the total copies of SARS-CoV-2 collected per day at the wastewater
9 treatment facilities, referred to below as “copies_per_day”, was different between cities referred
10 to below as “location”.

11 Results from test when testing copies_per_day ~ location

12 **A) Brown-Forsythe Test (alpha = 0.05)**

13 -----
14 data : copies_per_day and location
15
16 statistic : 69.33715
17 num df : 5
18 denom df : 129.2721
19 p.value : 6.511297e-35
20
21 Result : Difference is statistically significant.
22 -----

23 **B) Levene's Test for Homogeneity of Variance (center = median)**

24 Df F value Pr(>F)
25 group 5 27.797 < 2.2e-16 ***
26 503
27 ---
28 Signif. codes: 0 '***' 0.001 '**' 0.01
29

30 **C) Bartlett test of homogeneity of variances**

31 '*' 0.05 '.' 0.1 ' ' 1
32
33 data: copies_per_day by location
34 Bartlett's K-squared = 1560, df = 5, p-value < 2.2e-16
35

36 **D) Fligner-Killeen test of homogeneity of variances**

37 data: copies_per_day by location
38 Fligner-Killeen:med chi-squared = 307.03, df = 5, p-value < 2.2e-16
39

40 **Comparisons of the AUC**

41 Simultaneous Tests for General Linear Hypotheses

42

43 Multiple Comparisons of Means: Tukey Contrasts

44

45

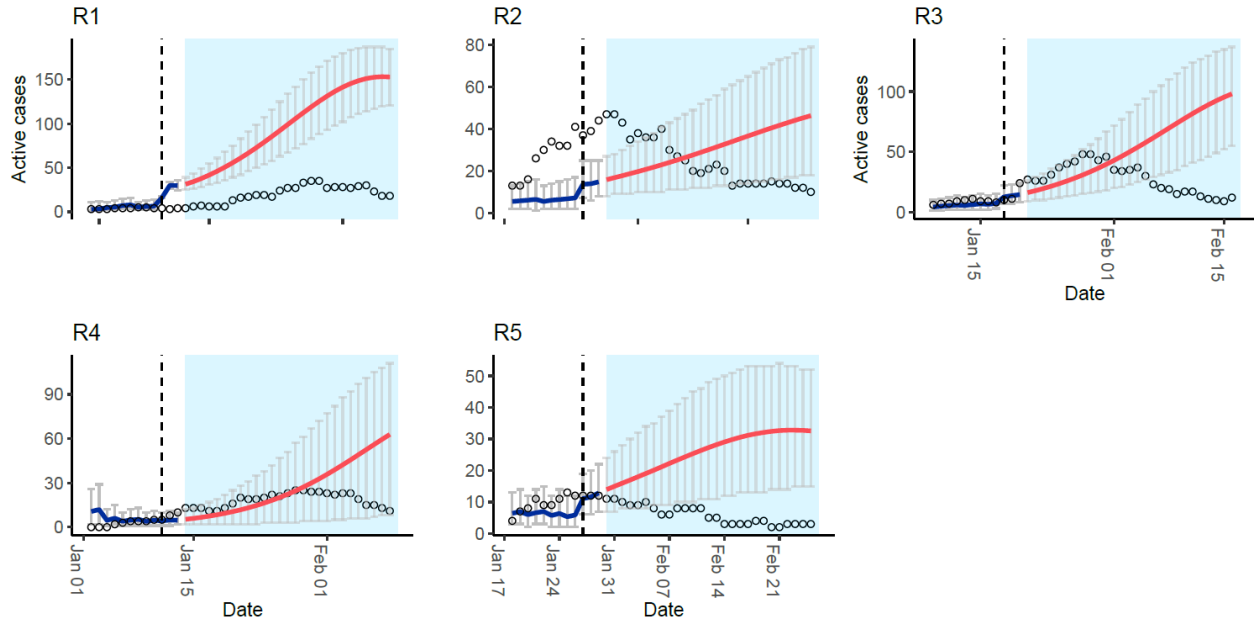
46 Fit: glmer(formula = AUC ~ Day + (1 | run_ID), data = AUC_Data, family = gaus
47 sian(link = make.link("logit"))

48

49 Linear Hypotheses:

		Estimate	Std. Error	z value	Pr(> z)	
50						
51	2 - 1 == 0	-0.104736	0.023831	-4.395	<0.01	**
52	3 - 1 == 0	-0.119183	0.023777	-5.013	<0.01	***
53	4 - 1 == 0	-0.093857	0.023854	-3.935	<0.01	**
54	5 - 1 == 0	-0.048525	0.024002	-2.022	0.7852	
55	6 - 1 == 0	-0.004944	0.024168	-0.205	1.0000	
56	7 - 1 == 0	0.046541	0.024376	1.909	0.8484	
57	8 - 1 == 0	0.090456	0.024575	3.681	0.0189	*
58	9 - 1 == 0	0.135982	0.024787	5.486	<0.01	***
59	10 - 1 == 0	0.173965	0.024987	6.962	<0.01	***
60	11 - 1 == 0	0.206515	0.025172	8.204	<0.01	***
61	12 - 1 == 0	0.245328	0.025392	9.662	<0.01	***
62	13 - 1 == 0	0.286689	0.025656	11.174	<0.01	***
63	14 - 1 == 0	0.314903	0.025840	12.187	<0.01	***
64	15 - 1 == 0	0.331965	0.025964	12.785	<0.01	***
65	3 - 2 == 0	-0.014447	0.023379	-0.618	1.0000	
66	4 - 2 == 0	0.010879	0.023458	0.464	1.0000	
67	5 - 2 == 0	0.056211	0.023608	2.381	0.5290	
68	6 - 2 == 0	0.099792	0.023776	4.197	<0.01	**
69	7 - 2 == 0	0.151276	0.023987	6.307	<0.01	***
70	8 - 2 == 0	0.195191	0.024190	8.069	<0.01	***
71	9 - 2 == 0	0.240718	0.024405	9.863	<0.01	***
72	10 - 2 == 0	0.278701	0.024608	11.326	<0.01	***
73	11 - 2 == 0	0.311251	0.024796	12.552	<0.01	***
74	12 - 2 == 0	0.350064	0.025019	13.992	<0.01	***
75	13 - 2 == 0	0.391424	0.025287	15.479	<0.01	***
76	14 - 2 == 0	0.419639	0.025474	16.474	<0.01	***
77	15 - 2 == 0	0.436701	0.025599	17.059	<0.01	***
78	4 - 3 == 0	0.025326	0.023401	1.082	0.9991	
79	5 - 3 == 0	0.070658	0.023552	3.000	0.1523	
80	6 - 3 == 0	0.114239	0.023720	4.816	<0.01	***
81	7 - 3 == 0	0.165723	0.023932	6.925	<0.01	***
82	8 - 3 == 0	0.209638	0.024134	8.686	<0.01	***
83	9 - 3 == 0	0.255165	0.024351	10.479	<0.01	***
84	10 - 3 == 0	0.293148	0.024554	11.939	<0.01	***
85	11 - 3 == 0	0.325698	0.024742	13.164	<0.01	***
86	12 - 3 == 0	0.364511	0.024965	14.601	<0.01	***
87	13 - 3 == 0	0.405871	0.025234	16.084	<0.01	***
88	14 - 3 == 0	0.434086	0.025421	17.076	<0.01	***
89	15 - 3 == 0	0.451148	0.025547	17.659	<0.01	***
90	5 - 4 == 0	0.045332	0.023629	1.918	0.8436	
91	6 - 4 == 0	0.088913	0.023797	3.736	0.0158	*
92	7 - 4 == 0	0.140398	0.024008	5.848	<0.01	***
93	8 - 4 == 0	0.184312	0.024210	7.613	<0.01	***
94	9 - 4 == 0	0.229839	0.024426	9.410	<0.01	***
95	10 - 4 == 0	0.267822	0.024628	10.875	<0.01	***
96	11 - 4 == 0	0.300372	0.024816	12.104	<0.01	***
97	12 - 4 == 0	0.339185	0.025038	13.547	<0.01	***
98	13 - 4 == 0	0.380545	0.025306	15.038	<0.01	***
99	14 - 4 == 0	0.408760	0.025493	16.034	<0.01	***
100	15 - 4 == 0	0.425822	0.025619	16.622	<0.01	***
101	6 - 5 == 0	0.043581	0.023945	1.820	0.8902	
102	7 - 5 == 0	0.095066	0.024154	3.936	<0.01	**

103	8 - 5 == 0	0.138980	0.024355	5.706	<0.01	***
104	9 - 5 == 0	0.184507	0.024569	7.510	<0.01	***
105	10 - 5 == 0	0.222490	0.024770	8.982	<0.01	***
106	11 - 5 == 0	0.255040	0.024957	10.219	<0.01	***
107	12 - 5 == 0	0.293853	0.025178	11.671	<0.01	***
108	13 - 5 == 0	0.335213	0.025444	13.174	<0.01	***
109	14 - 5 == 0	0.363428	0.025630	14.180	<0.01	***
110	15 - 5 == 0	0.380490	0.025755	14.773	<0.01	***
111	7 - 6 == 0	0.051485	0.024318	2.117	0.7230	
112	8 - 6 == 0	0.095400	0.024517	3.891	<0.01	**
113	9 - 6 == 0	0.140926	0.024729	5.699	<0.01	***
114	10 - 6 == 0	0.178909	0.024929	7.177	<0.01	***
115	11 - 6 == 0	0.211459	0.025115	8.420	<0.01	***
116	12 - 6 == 0	0.250272	0.025334	9.879	<0.01	***
117	13 - 6 == 0	0.291633	0.025599	11.392	<0.01	***
118	14 - 6 == 0	0.319847	0.025783	12.405	<0.01	***
119	15 - 6 == 0	0.336909	0.025907	13.004	<0.01	***
120	8 - 7 == 0	0.043915	0.024721	1.776	0.9075	
121	9 - 7 == 0	0.089442	0.024932	3.587	0.0261	*
122	10 - 7 == 0	0.127424	0.025130	5.071	<0.01	***
123	11 - 7 == 0	0.159974	0.025314	6.320	<0.01	***
124	12 - 7 == 0	0.198787	0.025532	7.786	<0.01	***
125	13 - 7 == 0	0.240148	0.025794	9.310	<0.01	***
126	14 - 7 == 0	0.268363	0.025977	10.331	<0.01	***
127	15 - 7 == 0	0.285425	0.026100	10.936	<0.01	***
128	9 - 8 == 0	0.045527	0.025126	1.812	0.8937	
129	10 - 8 == 0	0.083510	0.025322	3.298	0.0659	.
130	11 - 8 == 0	0.116059	0.025505	4.550	<0.01	***
131	12 - 8 == 0	0.154872	0.025721	6.021	<0.01	***
132	13 - 8 == 0	0.196233	0.025981	7.553	<0.01	***
133	14 - 8 == 0	0.224448	0.026163	8.579	<0.01	***
134	15 - 8 == 0	0.241510	0.026285	9.188	<0.01	***
135	10 - 9 == 0	0.037983	0.025527	1.488	0.9780	
136	11 - 9 == 0	0.070533	0.025709	2.744	0.2771	
137	12 - 9 == 0	0.109346	0.025923	4.218	<0.01	**
138	13 - 9 == 0	0.150706	0.026181	5.756	<0.01	***
139	14 - 9 == 0	0.178921	0.026361	6.787	<0.01	***
140	15 - 9 == 0	0.195983	0.026483	7.400	<0.01	***
141	11 - 10 == 0	0.032550	0.025900	1.257	0.9956	
142	12 - 10 == 0	0.071363	0.026113	2.733	0.2832	
143	13 - 10 == 0	0.112723	0.026369	4.275	<0.01	**
144	14 - 10 == 0	0.140938	0.026548	5.309	<0.01	***
145	15 - 10 == 0	0.158000	0.026668	5.925	<0.01	***
146	12 - 11 == 0	0.038813	0.026289	1.476	0.9793	
147	13 - 11 == 0	0.080174	0.026544	3.020	0.1438	
148	14 - 11 == 0	0.108388	0.026721	4.056	<0.01	**
149	15 - 11 == 0	0.125450	0.026840	4.674	<0.01	***
150	13 - 12 == 0	0.041361	0.026751	1.546	0.9694	
151	14 - 12 == 0	0.069575	0.026927	2.584	0.3798	
152	15 - 12 == 0	0.086637	0.027046	3.203	0.0866	.
153	14 - 13 == 0	0.028215	0.027175	1.038	0.9994	
154	15 - 13 == 0	0.045277	0.027293	1.659	0.9448	
155	15 - 14 == 0	0.017062	0.027465	0.621	1.0000	
156	---					
157	Signif. codes: 0 '***' 0.001 '**' 0.01 '*' 0.05 '.' 0.1 ' ' 1					
158	(Adjusted p values reported -- single-step method)					
159						



160

161 **Figure S1: Outbreak peak forecast.** The red line in the graph represents the predicted number
 162 of active cases of SARS-CoV-2 in wastewater. This prediction was made at a time when the
 163 virus levels in wastewater were starting to decrease and corresponded to two days after the peak
 164 of SARS-CoV-2 in wastewater, which is indicated by the vertical dashed lines. The blue lines in
 165 the graph show the estimated number of active cases based on the wastewater data, and the blue
 166 shade represents the data that was not yet observed at the time of the forecast. Based on the
 167 wastewater data the model failed to predict the outbreak peak accurately. The gray bars indicate
 168 the 95% confidence intervals. The dots in the graph represent the number of active cases, which
 169 were determined using a moving sum of the clinically confirmed cases over an 11-day period.