

**Longitudinal Association of Mid-Life Ten Year Cardiovascular Disease Risk Score with Brain Biomarkers of Alzheimer's Disease, Neurodegeneration and White Matter Hyper Intensities in Cognitively Unimpaired Older Adults:  
Heart SCORE Brain Study**

*Anum Saeed<sup>1,2</sup>, Yue Fang Chang<sup>1</sup>, Justin Swanson<sup>3</sup>, Michael Vu<sup>4</sup>, Mark Mapstone<sup>4</sup>, Victor L Villemagne<sup>1</sup>, Beth E. Snitz, Sarah K. Royse, Brian Lopresti, Howard J. Aizenstein, Minjie Wu, Kevin Kip<sup>2</sup>, Steven E. Reis<sup>1,2</sup>, Oscar Lopez<sup>1,5</sup>, Ann Cohen<sup>1</sup>,*

<sup>1</sup> *University of Pittsburgh School of Medicine, Pittsburgh, PA*

<sup>2</sup> *Heart and Vascular Institute, UPMC, Pittsburgh, PA*

<sup>3</sup> *University of South Florida, Tampa, FL*

<sup>4</sup> *University of California, Irvine, Department of Neurology, Irvine, CA*

<sup>5</sup> *Cognitive and Behavioral and Neurology Division, UPMC, Pittsburgh, PA*

***Corresponding Author:***

*Anum Saeed, MD*

Twitter: @AnumSaeedMD

200 Lothrop St  
Scaife Hall 401-424  
Pittsburgh, PA 15206  
E: [saeeda@pitt.edu](mailto:saeeda@pitt.edu)  
T: 2036061032

*Word Count (without references): 3,275*

*References: 63*

## Abstract

**Introduction:** Atherosclerotic cardiovascular disease (ASCVD) risk factors in mid-life have been associated with cognitive decline and late-life dementia. However, the role of these risk factors in preclinical Alzheimer's disease (AD) pathophysiology remains elusive. We investigated whether mid-life 10-year pooled cohort equations (PCE) based ASCVD risk is associated with late-life amyloid, tau, neurodegeneration [AT(N)] measures and white matter hyperintensities (WMHI).

**Methods:** Participants enrolled in the Heart Strategies Concentrating on Risk Evaluation (Heart SCORE) study between 2003-2005 (mid-life) and underwent brain MRI and PET scans in 2018-2022 (age >65 years, late-life) to detect and quantify amyloid (A, PiB-PET) and tau (T, Flortaucipir (FTP) PET) deposition, cortical thickness (N) and white matter hyperintensities (WMHIs). Mid-life PCE ASCVD risk was categorized as; *borderline* (5%-7.4%), *intermediate* (7.5%- <15%), or *high* ( $\geq 15\%$ ). Association of midlife ASCVD risk HR (5% CI) was assessed using logistic and linear regressions with A, T, or N and chi square beta coefficients for WMHI in latelife.

**Results:** Over a ~16y follow up, in 135 participants (mean age 73y), A and T showed no significant association with mid-life ASCVD risk. Neurodegeneration had a graded association with mid-life ASCVD risk categories ( $OR_{ASCVD\ high\ vs\ low\ risk\ \%} 6.98 [2.44-19.95]; p < 0.05$ ) driven by self-identified Black race and age. In a subset n=60, ASCVD risk score was also associated with WMHIs ( $\beta = 0.42 \pm 0.22; p = 0.05$ ) in a model adjusted for inflammation and education.

**Conclusions:** In this asymptomatic, diverse cohort, 10y ASCVD risk was predictive of late-life neurodegeneration and white matter hyperintensities but not amyloid or tau. These data suggest that ASCVD risk factors in midlife may lead to a state of vulnerability (through increased neurodegeneration and white matter hyperintensities) which may progress to cognitive decline and dementia. Further mechanistic studies are warranted to test this hypothesis.

## Introduction:

Alzheimer's disease (AD) and AD-Related Dementias (ARD) are a major public health challenge in the United States with projected increases to 9.3 million by 2060 (1). Development of disease-modifying therapies are challenging due, in part, by the long preclinical window of AD. The preclinical window of AD can begin in mid-life, providing a critical window for identification and optimization of AD risk factors.

In the National Institute on Aging and Alzheimer's Association Research Framework, AD is defined by its underlying pathologic processes that can be documented by postmortem examination or *in vivo* by biomarkers. The diagnosis is not based on the clinical consequences of the disease (i.e., symptoms/signs) in this research framework, which shifts the definition of AD in living people from a syndromal to a biological construct. The research framework focuses on the diagnosis of AD with biomarkers in living persons. Biomarkers are grouped into those of  $\beta$  amyloid (A) and tau (T) deposition, and neurodegeneration (N) or collectively identified as AT(N). This classification system groups different biomarkers (imaging and biofluids) by the pathologic process underlying each measures.

Neurodegenerative changes (N) in the absence of amyloid and tau, in addition to white matter hyperintensities (WMHIs) are suggested to be linked with various forms of cognitive decline though their involvement in AD onset remains elusive. Both WMHIs and neurodegenerative changes, like ASCVD can present years before cognitive decline (2, 3). Hypertension, inflammation and dyslipidemias, risk factors for ASCVD, have been linked with neurodegeneration and WMHIs in individuals with cerebrovascular pathology and without (4, 5) (6) (7).

In the United States, 10-year ASCVD risk assessed calculated by the pooled cohort equations (PCE) is used as a guiding tool to identify individuals are risk for ASCVD events (8). In the 2013 and 2018 American Heart Association and American College of Cardiology's cholesterol guidelines, the PCE derived 10-year risk was recommended to guide the use of statin therapy in primary prevention. Although the PCE predicts ASCVD events, its risk prediction for dementia or AD pathology has not yet been assessed. This study investigated the association of PCE based ASCVD risk score with cerebrovascular white matter damage as WMHIs, neurodegeneration and brain biomarkers of AD in a biracial cohort of community dwellers with preserved cognition over a ~16 year follow up period.

## Methods:

The Heart Strategies Concentrating on Risk Evaluation (Heart SCORE) study originally enrolled 1,949 participants aged 45-75 years at baseline entry between 2003-2005 (~44% racialized as Black, ~66% women) to examine racial disparities in the prevalence and outcome of ASCVD (NCT00143923) (9, 10). The cohort underwent a baseline evaluation of demographic and psychosocial characteristics and serologic markers including all the variables of the PCE derived

ASCVD risk (i.e age, sex, self-reported race, total cholesterol, high density lipoprotein cholesterol (HDL-c), triglycerides, diabetes, hypertension medications, systolic blood pressure and smoking history). From the original Heart SCORE study, a subset of participants who are currently undergoing late-life neuroimaging and neurocognitive testing, were recruited for this analysis. All participants underwent a baseline Montreal Cognitive Assessment (MoCA) score  $>20$ ; those who met criteria for dementia at a Consensus Diagnostic Conference were excluded from the current study.

**Brain MRI scans:** The MR scanning was completed on a Siemens Prisma 3-T scanner, equipped with 64-channel systems with Connectome level gradients operating at 80mT/m (11). Briefly, the following sequences were obtained from all participants: MP-RAGE (Magnetization Prepared - Rapid Gradient Echo), axial gradient recalled echo T2-weighted imaging, axial T2 fluid-attenuated inversion recovery (FLAIR).

We processed T1 images with FreeSurfer version 7.1 to define regions-of-interest (ROIs) and total intracranial volume (ICV)(12). We applied the Imperial College London Clinical Imaging Center (CIC) atlas to better delineate functional subdivisions of the striatum(13). All parcellations were visually inspected prior to analysis. We calculated a composite measure of medial temporal lobe (MTL) cortical thickness (mm) as the surface area-weighted average of FreeSurfer ROI-derived cortical thickness in the fusiform gyrus, entorhinal cortex, inferior and middle temporal gyri (15). Participants were categorized as N+ if their MTL cortical thickness  $\leq 2.8$  OR 2.7 (14). WMHI volume was derived from T2 FLAIR images using a quantitative computer-aided segmentation program to measure the volumetric burden (cm<sup>3</sup>) of WMHI volume (15).

Prior to the PET imaging session, a T1-weighted structural MR series (MPRAGE) was acquired using a 3T Siemens PRISMA scanner with a 1 mm isotropic voxel size. Each participant's MR image was parcellated into a set of regions of interest (ROIs) using the default FreeSurfer v5.3 ((12)) pipeline and Desikan-Killiany atlas with the exception of striatal subregions, which were substituted by components from the Imperial College London Clinical Imaging Centre (CIC) atlas (Tziortzi et al. 2011) as previously described (16). All FreeSurfer ROIs were visually inspected and manually edited where appropriate.

An AD-signature composite cortical thickness index was derived based on a surface-area weighted average of the mean cortical thickness of four FreeSurfer ROIs: entorhinal, inferior temporal, middle temporal, and fusiform. Abnormal composite cortical thickness indicating neurodegeneration (N+) in the ATN framework was defined as  $< 2.7$  mm based on a sensitivity threshold (14, 17).

**PET Imaging with Pittsburgh Compound B (PiB):** Detailed methods for PiB PET have been published (18-20). Brain A $\beta$  burden was measured via [11C]Pittsburgh Compound-B (PiB) (21) on either a Siemens Biograph mCT PET/CT scanner (Siemens Healthcare GmbH, Erlagen, Germany) or a Siemens ECAT Exact HR+ scanner (Siemens Healthcare GmbH, Erlagen, Germany). We measured brain tau load using [18F]Flortaucipir (FTP) on the same Siemens Biograph mCT PET/CT described above. Briefly, at separate PET visits, participants received

slow bolus injections of either PiB (~15 mCi) or FTP (~10 mCi). After a tracer-appropriate delay (PiB: 25-minutes; FTP: 75-minutes), participants were positioned in the scanner for a transmission scan for attenuation correction. PiB PET studies were then acquired 50-70 minutes post-injection; FTP PET studies were acquired 75-105 minutes post-injection.

Each PiB and FTP scan was visually examined and, if necessary, corrected for interframe motion prior to analysis. We created a single PET frame by averaging the images over tracer-specific post-injection intervals (PiB: 50-70 minutes; FTP: 80-100 minutes). Using PMOD version 4.1 (<http://www.pmod.com>), we co-registered each single-frame PET image to its corresponding MRI in native space and sampled the images with FreeSurfer and CIC atlas ROIs.

Global A $\beta$  burden for each participant was measured as a single, global standardized uptake value ratio (SUVR), calculated as the volume-weighted average of PiB radioactivity in nine FreeSurfer-defined ROIs, normalized to cerebellar gray matter (22). We considered participants to be A+ if their global PiB SUVR  $\geq$  1.3 (22).

We used meta-temporal SUVR as a measure of tau burden by calculating the volume-weighted average of FTP radioactivity in FreeSurfer-defined entorhinal cortex, hippocampal gyrus, fusiform, inferior temporal gyrus, and middle temporal gyrus, normalized to cerebellar gray matter (22). Participants were considered T+ if their meta-temporal FTP SUVR  $\geq$  1.18.

***Covariates and PCE 10-year ASCVD Risk:*** Baseline characteristics of the study population were defined using data at the entry into the Heart SCORE cohort. These included sociodemographic data (age, sex, and race/ethnicity, low-density lipoprotein cholesterol, and the remaining pooled cohorts equation (PCE) variables including; total cholesterol, high-density lipoprotein cholesterol, treatment for hypertension, systolic blood pressure, current smoking status, and diabetes. The cohort was divided into categories of PCE-derived 10-year risk (8, 23) that is, *low-risk* (<5%); *borderline risk* (5%–7.4%); *intermediate risk* (7.5%–<15%), and *high risk* ( $\geq$ 15%).

Detailed methods have been described elsewhere (9). Briefly, lipid measurements were performed on fasting plasma samples that were stored at  $-70^{\circ}\text{C}$  with ethylenediaminetetraacetic acid as the anticoagulant. Plasma total cholesterol, high-density lipoprotein cholesterol, and triglycerides were measured using enzymatic measures (24). Low-density lipoprotein cholesterol was calculated using the Friedewald equation (25). Diabetes mellitus was defined as a fasting glucose level  $\geq$ 126 mg/dL, a self-reported physician diagnosis of diabetes, or use of diabetes medications. Hypertension in the Heart SCORE study is defined as systolic blood pressure  $\geq$ 140 mm Hg or diastolic blood pressure  $\geq$ 90 mm Hg or use of blood pressure-lowering therapies. Consistent with the PCE, smoking history was categorized as current or not current (a composite of never and former smoking). Inflammatory burden at baseline was assessed by measuring high sensitivity C reactive protein (hsCRP) on participants' plasma samples.

***Arterial Stiffness:*** Arterial stiffness and wave reflection were measured at Heart SCORE study entry (mid-life) using the Endo-PAT device and expressed as heart rate-adjusted augmentation index (AI75). (26) Higher AI75 denoted higher arterial stiffness and wave reflection.

## Statistical Analysis

Baseline descriptive statistics of the study sample, such as the minimum, maximum, median, and mean for each continuous variable and frequency table for each categorical variable, were initially analyzed to summarize the data and detect outliers and missing values. Missing data were uncommon. Descriptive characteristics are presented as mean and SD for continuous variables, and frequencies and proportions for categorical variables. The difference of mean across the ASCVD groups is assessed by 1-way ANOVA, while the difference of frequencies is compared using the  $\chi^2$  test.

White matter hyperintensities volume was natural log-transformed to adjust for skewness. We used linear and logistic regression models to estimate the association of the ten year ASCVD risk score with WMHI volume, brain amyloid deposition and neurodegeneration. We evaluated midlife 10 year ASCVD risk score, as continuous and categorical variables. All models were fully adjusted for education level and hsCRP measures. Further, WMHI were adjusted for total intracranial volume.

In an exploratory analysis, we also assessed association of arterial stiffness (AI75) in midlife as a continuous variable with latelife WMHIs.

## Results:

### Baseline Characteristics

*Participants with PET imaging:* A subset of 145 Heart SCORE participants with PET imaging were included in the current analysis out of whom 68.3% were females and ~30% of self-identified Black race (**Table 1a**). Overall, 35.2% of the participants had baseline hypertension and ~38% were categorized as high risk according to the 10-year ASCVD risk in midlife. In race-stratified baseline characteristic, more Black participants had baseline hypertension (54.8%) and diabetes (7%). More Black participants (~62%) were noted to have a higher 10-year ASCVD risk (>7.5%) in midlife compared to White (31%) counterparts (**Table 1a**).

*Participants with White Matter Hyperintensities:* As subset of 60 participants included from the Heart SCORE brain MRI study were included in the current analysis (**Table 1b**). Mean age at baseline was  $59.7 \pm 4.4$  years and ~60% were females. Like the overall cohort, 30% of participants who underwent brain MRI self-identified as Black and ~38% had hypertension at baseline. The mean ASCVD risk score for this subset was  $8 \pm 0.06\%$  (**Table 1b**).

*Association of Midlife ASCVD Risk and Latelife Brain Biomarkers of Neurodegeneration using cortical thickness:* Neurodegenerative (N) biomarker had a graded association with increasing mid-life ASCVD risk categories ( $OR_{ASCVD \text{ high vs low risk}} 6.98 [2.44-19.95]$ ;  $p < 0.05$ ) while no significant association was found with PiB uptake (A) on PET (**Table 2**) after a mean 16y follow up. In fully adjusted models, the association of neurodegeneration brain biomarker with the 10 year ASCVD risk was mainly driven by Black race ( $RR 3.18 [1.77-5.12]$ ), age ( $RR 1.84 [1.35-$

2.42]) and aspirin use ( $RR\ 2.10\ [1.34-3.26]$ ; all  $p < 0.05$  (**Supplemental Table II**). Baseline education level and hypertension were not associated with late-life neurodegeneration.

Given the significantly higher risk of neurodegeneration biomarker in Black participants, we conducted a race-stratified regression analysis (**Table 2a**). A graded risk was observed across the ASCVD risk score amongst Black participants as well as White. However given a limited number of Black participants, we did not observe significant associations. Amongst White participants, midlife 10-year risk of  $>15\%$  had the highest risk of neurodegeneration ( $RR\ 8.46\ [1.89-37.88]$ ;  $p=0.01$ ) (**Table 2a**).

*Association of Midlife ASCVD Risk and Latelife Brain Biomarkers of AD:* We did not find a statistically significant association of midlife 10-year ASCVD risk with brain biomarkers of AD (A or T). Although there was a trend noted towards higher risk of amyloid (A) deposition (OR 1.14 [0.23-4.46]), it did not reach statistical significance.

*Association of Midlife ASCVD Risk and Latelife White Matter Hyperintensities on Brain MRI Imaging:* In the continuous linear regression, latelife WMHI lesion burden significantly correlated with midlife ASCVD 10-year risk ( $\beta=0.51 \pm 0.21$ ;  $p=0.02$ ). When these data were adjusted for hsCRP and education level  $<$ college, this association was attenuated ( $0.42 \pm 0.22$ ,  $p=0.05$ ) (**Table 3a**). There was a significant negative association with WMHI burden in latelife with midlife elevated hsCRP ( $\beta= -0.25 \pm 0.11$ ;  $p=0.03$ ) while no significance was observed with education level. We observed a graded association with risk of WMHI burden in participants with moderate to high midlife 10 year ASCVD risk when stratified by categories of risk (**Table 3b**). In model 2 (adjusted for hsCRP and education level), the association WMHIs with midlife ASCVD risk of  $>15\%$  was no longer statistically significant; likely driven by inflammation burden ( $hsCRP\ \beta= -0.28 \pm 0.11$ ;  $p=0.02$ ). In the exploratory analysis, there was a signal of association between midlife vascular stiffness and late-life WMHIs in this cohort ( $\beta= 0.016 \pm 0.009$ ;  $p=0.06$ ) largely driven by presence of hypertension ( $\beta= 0.88 \pm 0.39$ ;  $p=0.03$ ).

## **Discussion:**

In a longitudinal cohort of community dwellers without cognitive impairment we present three key findings; 1) midlife 10-year ASCVD risk was significantly associated with white matter hyperintensities and neurodegeneration, while not with amyloid and tau, on brain imaging obtained more than 15 years later, 2) this association was graded across increasing categories of risk score, and; 3) association of ASCVD risk and neurodegeneration was primarily driven by presence of self-reported Black race. To our knowledge, this is the first study evaluating midlife ASCVD risk score and its long-term association with WMHIs, neurodegeneration and Alzheimer's disease (AD) imaging biomarker burden in the same cohort of cognitively preserved persons.

Our findings are meaningful in several ways. The association of a routinely implemented 10y ASCVD risk score may be an important risk stratification tool for early intervention in prevention of WMHIs and neurodegeneration – both of which may induce a state of “brain vulnerability” and progression to dementia and AD (27). The ASCVD risk score is an established predictor of ASCVD events within the Heart SCORE population (10, 28, 29) and

other cohorts across the United States (30, 31). This score is routinely implemented in clinical practice by clinicians (such as primary care physicians, geriatricians, internists and cardiologists) to identify high risk individuals who will benefit from aggressive preventive interventions including statin therapy initiation. (32) Thus, to utilize a common tool for risk stratification for future ASCVD and a “vulnerable” brain state is an important advance in risk stratification and patient-physician discussion on preventive care. Havenon et al., recently reported the association of ASCVD risk with elevated WMHI burden and progression in their preliminary work. (33) Individually, hypertension and other cardiac risk factors have been associated with WMHI and neurodegeneration in several cross-sectional analysis (34) (35). However, longitudinal prediction of WMHIs, neurodegeneration and brain AD biomarkers with a routinely used clinical tool has not been performed in a cognitively persevered and diverse community cohort.

The significance of WMHIs as an important neuroimaging characteristic in has been established recently in those with autosomal dominant AD (ADAD). (36). In individuals with ADAD and cognitive impairment, Schoemaker et al., found that WMHI volume was higher compared to both cognitively unimpaired ADAD and non-carriers. Conversely, cortical amyloid burden on PET and cerebrospinal fluid (CSF) phosphorylated tau levels were elevated, and CSF amyloid levels were reduced in both cognitively unimpaired and impaired mutation carriers, relative to non-carriers. Rizvi et al., have also shown that WMHIs were associated with cortical thinning in the right frontal/parietal regions over a span of 4 years. (37) These patterns of atrophy align with the neurodegenerative changes commonly observed in AD including the characteristic cortical signature involving the entorhinal cortex and multiple cortical regions.

Cortes-Canteli and coworkers recently showed an association of brain hypometabolism with modifiable cardiovascular risk factors stratified by the Framingham risk score. (38) Indeed risk factors of CVD including hypertension (39), hyperlipidemia (40), metabolic syndrome (41) and cigarette smoking (42) have a very strong association with dementia incidence (43, 44). More recent evidence also links these risk factors for promotion of amyloid and progression of AD pathology. (45-47) Although we did not observe an association of the 10y risk score with brain amyloid and tau in the current analysis; it is plausible that long-term presence of ASCVD risk factors creates a “vulnerable” region for amyloid and tau deposition in the later years and subsequent progression to AD dementia (48-51).

The 10-year atherosclerotic CVD risk score (52), which takes into account presence of modifiable and non-modifiable clinical risk factors has an excellent predictability for ASCVD events. However, during transition from mid-to late-life, the clinical risk factors become more prevalent and are less predictive of clinical disease; thus they likely under-quantify event “risk”. We have previously shown that in older adults, addition of biomarkers of inflammation, myocardial stretch and injury improved ASCVD event prediction ( $\Delta$ AUC 0.103; continuous NRI 0.484) when added to the 10y risk score clinical variables. (53) Thus, in the current analysis, it is also possible that the 10-year ASCVD risk score is less predictive of AD pathology on PET due to the older age of these individuals. It may be imperative to explore whether ASCVD risk score is associated with elevated AD biomarkers, which can predate the tau and A $\beta$  deposition in PET scans (54-57), thereby more succinctly identifying those at the highest risk of AD.



Our results also signal arterial stiffness and hypertension in midlife as likely primary drivers of WMHIs in midlife as shown previously (58-61). Whereas, neurodegeneration was mainly seen in association with self-reported Black race. Thus, the likely mechanisms that lead both these pathological states in the brain may be different and race-related differences may be at play. Furthermore, since race is a social construct, the impact of disparities in social determinants of health and in lived experience, including inequities in access to medical care need to be assessed as the driver for not only AD but also ASCVD risk.

### **Limitations:**

Our study has some notable limitations. First, Heart SCORE is a highly educated cohort homogeneity in terms of years of education may limit comparisons. However, we expect that high education level would not artificially increase neurodegeneration or WMHIs burden. Second, more precise contributions of genetic influences, lifestyle, stress, and socioeconomic environmental exposure may influence this analysis and we did not test for such interactions. In our cohort, we also observed a low proportion of A and T positive participants thus limiting the assessment of AD pathology. Finally, we measured the 10 year ASCVD risk score at midlife one time. Although the score may be influenced by several cardiovascular risk factors, age is the primary driver of this score and thus overtime it will be increase rather than reverse in a vast majority of individuals. While our study included a good proportion of Black and White individuals, the generalizability to other ethnic minorities and geographic regions may be limited due to lack of representation.

### **Conclusion:**

A key question is if the confluence of ASCVD risk factors, as measured by the 10y risk score, can also quantify future risk of the vulnerable brain by virtue of WMHIs and neurodegeneration? Our current data would point to more exploration of this question in future studies. Statin therapies and other primary preventive measures have shown risk reduction in not only ASCVD events but also dementia incidence (62, 63). However, a comprehensive impact of primordial and primary prevention of ASCVD risk factors on WMHIs, neurodegeneration, AD pathology and overall, cognitive decline remains to be tested in randomized and controlled studies. Further, since this study did not explore the relationship between ASCVD risk assessment tool and other key biomarkers of AD and cognitive deterioration. This will provide a more comprehensive understanding of the complex interplay between these factors in AD initiation.

## References:

1. Matthews KA, Xu W, Gaglioti AH, Holt JB, Croft JB, Mack D, et al. Racial and ethnic estimates of Alzheimer's disease and related dementias in the United States (2015-2060) in adults aged  $\geq 65$  years. *Alzheimers Dement*. 2019;15(1):17-24.
2. Rowe CC, Bourgeat P, Ellis KA, Brown B, Lim YY, Mulligan R, et al. Predicting Alzheimer disease with  $\beta$ -amyloid imaging: results from the Australian imaging, biomarkers, and lifestyle study of ageing. *Annals of neurology*. 2013;74(6):905-13.
3. Tsao CW, Aday AW, Almarzooq ZI, Anderson CAM, Arora P, Avery CL, et al. Heart Disease and Stroke Statistics—2023 Update: A Report From the American Heart Association. *Circulation*. 2023;147(4):e97-e320.
4. Lennon MJ, Makkar SR, Crawford JD, Sachdev PS. Midlife Hypertension and Alzheimer's Disease: A Systematic Review and Meta-Analysis. *J Alzheimers Dis*. 2019;71(1):307-16.
5. Carnevale D, Perrotta M, Lembo G, Trimarco B. Pathophysiological Links Among Hypertension and Alzheimer's Disease. *High Blood Pressure & Cardiovascular Prevention*. 2016;23(1):3-7.
6. Arvanitakis Z, Capuano AW, Leurgans SE, Bennett DA, Schneider JA. Relation of cerebral vessel disease to Alzheimer's disease dementia and cognitive function in elderly people: a cross-sectional study. *Lancet Neurol*. 2016;15(9):934-43.
7. Williamson W, Lewandowski AJ, Forkert ND, Griffanti L, Okell TW, Betts J, et al. Association of Cardiovascular Risk Factors With MRI Indices of Cerebrovascular Structure and Function and White Matter Hyperintensities in Young Adults. *Jama*. 2018;320(7):665-73.
8. Goff DC, Jr., Lloyd-Jones DM, Bennett G, Coady S, D'Agostino RB, Sr., Gibbons R, et al. 2013 ACC/AHA Guideline on the Assessment of Cardiovascular Risk: A Report of the American College of Cardiology/American Heart Association Task Force on Practice Guidelines. *Circulation*. 2013;127(4):e47-e132.
9. Aiyer AN, Kip KE, Marroquin OC, Mulukutla SR, Edmundowicz D, Reis SE. Racial differences in coronary artery calcification are not attributed to differences in lipoprotein particle sizes: the Heart Strategies Concentrating on Risk Evaluation (Heart SCORE) Study. *American heart journal*. 2007;153(2):328-34.
10. Bambs C, Kip KE, Dinga A, Mulukutla SR, Aiyer AN, Reis SE. Low prevalence of "ideal cardiovascular health" in a community-based population: the heart strategies concentrating on risk evaluation (Heart SCORE) study. *Circulation*. 2011;123(8):850-7.
11. Gogola A, Minhas DS, Villemagne VL, Cohen AD, Mountz JM, Pascoal TA, et al. Direct Comparison of the Tau PET Tracers (18)F-Flortaucipir and (18)F-MK-6240 in Human Subjects. *J Nucl Med*. 2022;63(1):108-16.
12. Fischl B. FreeSurfer. *Neuroimage*. 2012;62(2):774-81.
13. Tziortzi AC, Searle GE, Tzimopoulou S, Salinas C, Beaver JD, Jenkinson M, et al. Imaging dopamine receptors in humans with [11C]-(+)-PHNO: dissection of D3 signal and anatomy. *Neuroimage*. 2011;54(1):264-77.
14. Jack CR, Jr., Wiste HJ, Weigand SD, Therneau TM, Lowe VJ, Knopman DS, et al. Defining imaging biomarker cut points for brain aging and Alzheimer's disease. *Alzheimers Dement*. 2017;13(3):205-16.
15. Raz L, Jayachandran M, Tosakulwong N, Lesnick TG, Wille SM, Murphy MC, et al. Thrombogenic microvesicles and white matter hyperintensities in postmenopausal women. *Neurology*. 2013;80(10):911-8.
16. Tudorascu DL, Minhas DS, Lao PJ, Betthausen TJ, Yu Z, Laymon CM, et al. The use of Centiloids for applying [(11)C]PiB classification cutoffs across region-of-interest delineation methods. *Alzheimers Dement (Amst)*. 2018;10:332-9.

17. Jack CR, Jr., Wiste HJ, Weigand SD, Therneau TM, Knopman DS, Lowe V, et al. Age-specific and sex-specific prevalence of cerebral beta-amyloidosis, tauopathy, and neurodegeneration in cognitively unimpaired individuals aged 50-95 years: a cross-sectional study. *Lancet Neurol.* 2017;16(6):435-44.
18. Lopresti BJ, Klunk WE, Mathis CA, Hoge JA, Ziolk SK, Lu X, et al. Simplified Quantification of Pittsburgh Compound B Amyloid Imaging PET Studies: A Comparative Analysis. *J Nucl Med.* 2005;46(12):1959-72.
19. Cohen AD, Price JC, Weissfeld LA, James J, Rosario BL, Bi W, et al. Basal Cerebral Metabolism May Modulate the Cognitive Effects of A $\beta$  in Mild Cognitive Impairment: An Example of Brain Reserve. *J Neurosci.* 2009;29(47):14770-8.
20. Price JC, Klunk WE, Lopresti BJ, Lu X, Hoge JA, Ziolk SK, et al. Kinetic modeling of amyloid binding in humans using PET imaging and Pittsburgh Compound-B. *J Cereb Blood Flow Metab.* 2005;25:1528-47.
21. Klunk WE, Engler H, Nordberg A, Wang Y, Blomqvist G, Holt DP, et al. Imaging brain amyloid in Alzheimer's disease with Pittsburgh Compound-B. *Annals of neurology.* 2004;55(3):306-19.
22. Snitz BE, Tudorascu DL, Yu Z, Campbell E, Lopresti BJ, Laymon CM, et al. Associations between NIH Toolbox Cognition Battery and in vivo brain amyloid and tau pathology in non-demented older adults. *Alzheimer's & Dementia: Diagnosis, Assessment & Disease Monitoring.* 2020;12(1):e12018.
23. Grundy SM, Stone NJ, Bailey AL, Beam C, Birtcher KK, Blumenthal RS, et al. 2018 AHA/ACC/AACVPR/AAPA/ABC/ACPM/ADA/AGS/APHA/ASPC/NLA/PCNA Guideline on the Management of Blood Cholesterol. *Circulation.* 2018:Cir0000000000000625.
24. Bambs C, Kip KE, Dinga A, Mulukutla SR, Aiyer AN, Reis SE. Low prevalence of "ideal cardiovascular health" in a community-based population: the heart strategies concentrating on risk evaluation (Heart SCORE) study. *Circulation.* 2011;123(8):850-7.
25. Friedewald WT, Levy RI, Fredrickson DS. Estimation of the concentration of low-density lipoprotein cholesterol in plasma, without use of the preparative ultracentrifuge. *Clinical chemistry.* 1972;18(6):499-502.
26. Saeed A, Strollo P, Reis SE, Olafiranye O. MID-LIFE PERIPHERAL ARTERIAL STIFFNESS PREDICTS COGNITIVE IMPAIRMENT IN OLDER ADULTS: INSIGHT FROM HEARTSCORE STUDY. *Journal of the American College of Cardiology.* 2023;81(8, Supplement):2025.
27. Li Y, Li M, Zhang X, Shi Q, Yang S, Fan H, et al. Higher blood-brain barrier permeability is associated with higher white matter hyperintensities burden. *J Neurol.* 2017;264(7):1474-81.
28. Bambs C, Reis SE. Embracing primordial prevention for ideal cardiovascular health. *Future Cardiol.* 2011;7(4):447-50.
29. Canterbury A, Echouffo-Tcheugui JB, Shpilsky D, Aiyer A, Reis SE, Erqou S. Association between cumulative social risk, particulate matter environmental pollutant exposure, and cardiovascular disease risk. *BMC Cardiovasc Disord.* 2020;20(1):76.
30. Rodriguez F, Chung S, Blum MR, Coulet A, Basu S, Palaniappan LP. Atherosclerotic Cardiovascular Disease Risk Prediction in Disaggregated Asian and Hispanic Subgroups Using Electronic Health Records. *Journal of the American Heart Association.* 2019;8(14):e011874.
31. Khera R, Pandey A, Ayers CR, Carnethon MR, Greenland P, Ndumele CE, et al. Performance of the Pooled Cohort Equations to Estimate Atherosclerotic Cardiovascular Disease Risk by Body Mass Index. *JAMA Network Open.* 2020;3(10):e2023242-e.
32. Saeed A, Zhu J, Thoma F, Marroquin O, Aiyer A, Agarwala A, et al. Cardiovascular Disease Risk-Based Statin Utilization and Associated Outcomes in a Primary Prevention Cohort: Insights From a Large Health Care Network. *Circulation Cardiovascular quality and outcomes.* 2021:Circoutcomes120007485.
33. Havenon Ad, Bangad A, Prabhakaran S, Sharma R, Yaghi S, Falcone GJ, et al. Abstract 127: White Matter Hyperintensity And Atherosclerotic Cardiovascular Disease Risk. *Stroke.* 2023;54(Suppl\_1):A127-A.

34. Jeerakathil T, Wolf PA, Beiser A, Massaro J, Seshadri S, D'Agostino RB, et al. Stroke risk profile predicts white matter hyperintensity volume: the Framingham Study. *Stroke*. 2004;35(8):1857-61.
35. Wiseman RM, Saxby BK, Burton EJ, Barber R, Ford GA, O'Brien JT. Hippocampal atrophy, whole brain volume, and white matter lesions in older hypertensive subjects. *Neurology*. 2004;63(10):1892-7.
36. Schoemaker D, Zanon Zotin MC, Chen K, Igwe KC, Vila-Castelar C, Martinez J, et al. White matter hyperintensities are a prominent feature of autosomal dominant Alzheimer's disease that emerge prior to dementia. *Alzheimers Res Ther*. 2022;14(1):89.
37. Rizvi B, Lao PJ, Chesebro AG, Dworkin JD, Amarante E, Beato JM, et al. Association of Regional White Matter Hyperintensities With Longitudinal Alzheimer-Like Pattern of Neurodegeneration in Older Adults. *JAMA Network Open*. 2021;4(10):e2125166-e.
38. Cortes-Canteli M, Gispert JD, Salvadó G, Toribio-Fernandez R, Tristão-Pereira C, Falcon C, et al. Subclinical Atherosclerosis and Brain Metabolism in Middle-Aged Individuals: The PESA Study. *Journal of the American College of Cardiology*. 2021;77(7):888-98.
39. Carnevale D, Mascio G, D'Andrea I, Fardella V, Bell RD, Branchi I, et al. Hypertension Induces Brain  $\beta$ -Amyloid Accumulation, Cognitive Impairment, and Memory Deterioration Through Activation of Receptor for Advanced Glycation End Products in Brain Vasculature. *Hypertension (Dallas, Tex : 1979)*. 2012;60(1):188-97.
40. Reed B, Villeneuve S, Mack W, DeCarli C, Chui HC, Jagust W. Associations Between Serum Cholesterol Levels and Cerebral Amyloidosis. *JAMA Neurology*. 2014;71(2):195-200.
41. Kim YJ, Kim SM, Jeong DH, Lee SK, Ahn ME, Ryu OH. Associations between metabolic syndrome and type of dementia: analysis based on the National Health Insurance Service database of Gangwon province in South Korea. *Diabetol Metab Syndr*. 2021;13(1):4.
42. Wallin C, Sholts SB, Österlund N, Luo J, Jarvet J, Roos PM, et al. Alzheimer's disease and cigarette smoke components: effects of nicotine, PAHs, and Cd(II), Cr(III), Pb(II), Pb(IV) ions on amyloid- $\beta$  peptide aggregation. *Sci Rep*. 2017;7(1):14423.
43. Alonso A, Mosley TH, Jr., Gottesman RF, Catellier D, Sharrett AR, Coresh J. Risk of dementia hospitalisation associated with cardiovascular risk factors in midlife and older age: the Atherosclerosis Risk in Communities (ARIC) study. *J Neurol Neurosurg Psychiatry*. 2009;80(11):1194-201.
44. Ranson JM, Rittman T, Hayat S, Brayne C, Jessen F, Blennow K, et al. Modifiable risk factors for dementia and dementia risk profiling. A user manual for Brain Health Services-part 2 of 6. *Alzheimers Res Ther*. 2021;13(1):169.
45. Clark LR, Norton D, Berman SE, Johnson SC, Bendlin BB, Wieben O, et al. Association of Cardiovascular and Alzheimer's Disease Risk Factors with Intracranial Arterial Blood Flow in Whites and African Americans. *Journal of Alzheimer's disease : JAD*. 2019;72(3):919-29.
46. Du XL, Song L, Schulz PE, Xu H, Chan W. Risk of Developing Alzheimer's Disease and Related Dementias in Association with Cardiovascular Disease, Stroke, Hypertension, and Diabetes in a Large Cohort of Women with Breast Cancer and with up to 26 Years of Follow-Up. *J Alzheimers Dis*. 2022;87(1):415-32.
47. Levine DA, Gross AL, Briceño EM, Tilton N, Kabeto MU, Hingtgen SM, et al. Association Between Blood Pressure and Later-Life Cognition Among Black and White Individuals. *JAMA Neurol*. 2020.
48. Meng Y, Goubran M, Rabin JS, McSweeney M, Ottoy J, Pople CB, et al. Blood-brain barrier opening of the default mode network in Alzheimer's disease with magnetic resonance-guided focused ultrasound. *Brain*. 2023.
49. Nation DA, Edmonds EC, Bangen KJ, Delano-Wood L, Scanlon BK, Han SD, et al. Pulse pressure in relation to tau-mediated neurodegeneration, cerebral amyloidosis, and progression to dementia in very old adults. *JAMA Neurol*. 2015;72(5):546-53.

50. Soldan A, Pettigrew C, Zhu Y, Wang MC, Moghekar A, Gottesman RF, et al. White matter hyperintensities and CSF Alzheimer disease biomarkers in preclinical Alzheimer disease. *Neurology*. 2020;94(9):e950-e60.
51. Teunissen CE, Verberk IMW, Thijssen EH, Vermunt L, Hansson O, Zetterberg H, et al. Blood-based biomarkers for Alzheimer's disease: towards clinical implementation. *Lancet Neurol*. 2021.
52. Goff DC, Jr., Lloyd-Jones DM, Bennett G, Coady S, D'Agostino RB, Gibbons R, et al. 2013 ACC/AHA guideline on the assessment of cardiovascular risk: a report of the American College of Cardiology/American Heart Association Task Force on Practice Guidelines. *Circulation*. 2014;129(25 Suppl 2):S49-73.
53. Saeed A, Nambi V, Sun W, Virani SS, Taffet G, Deswal A, et al. Short-Term Global Cardiovascular Disease Risk Prediction in Older Adults. *Journal of the American College of Cardiology*. 2018.
54. Balogun WG, Zetterberg H, Blennow K, Karikari TK. Plasma biomarkers for neurodegenerative disorders: ready for prime time? *Curr Opin Psychiatry*. 2023;36(2):112-8.
55. Bilgel M, An Y, Walker KA, Moghekar AR, Ashton NJ, Kac PR, et al. Longitudinal changes in Alzheimer's-related plasma biomarkers and brain amyloid. *medRxiv*. 2023.
56. Simrén J, Brum WS, Ashton NJ, Benedet AL, Karikari TK, Kvartsberg H, et al. CSF tau368/total-tau ratio reflects cognitive performance and neocortical tau better compared to p-tau181 and p-tau217 in cognitively impaired individuals. *Alzheimers Res Ther*. 2022;14(1):192.
57. Therriault J, Vermeiren M, Servaes S, Tissot C, Ashton NJ, Benedet AL, et al. Association of Phosphorylated Tau Biomarkers With Amyloid Positron Emission Tomography vs Tau Positron Emission Tomography. *JAMA Neurol*. 2022.
58. Cardenas VA, Reed B, Chao LL, Chui H, Sanossian N, DeCarli CC, et al. Associations Among Vascular Risk Factors, Carotid Atherosclerosis, and Cortical Volume and Thickness in Older Adults. *Stroke*. 2012;43(11):2865-70.
59. Dickie DA, Gardner K, Wagener A, Wyss A, Arba F, Wardlaw JM, et al. Cortical thickness, white matter hyperintensities, and cognition after stroke. *Int J Stroke*. 2020;15(1):46-54.
60. Dickie DA, Karama S, Ritchie SJ, Cox SR, Sakka E, Royle NA, et al. Progression of White Matter Disease and Cortical Thinning Are Not Related in Older Community-Dwelling Subjects. *Stroke*. 2016;47(2):410-6.
61. Dickie DA, Ritchie SJ, Cox SR, Sakka E, Royle NA, Aribisala BS, et al. Vascular risk factors and progression of white matter hyperintensities in the Lothian Birth Cohort 1936. *Neurobiol Aging*. 2016;42:116-23.
62. Olmastroni E, Molari G, De Beni N, Colpani O, Galimberti F, Gazzotti M, et al. Statin use and risk of dementia or Alzheimer's disease: a systematic review and meta-analysis of observational studies. *European journal of preventive cardiology*. 2022;29(5):804-14.
63. Zhou Z, Ofori-Asenso R, Curtis AJ, Breslin M, Wolfe R, McNeil JJ, et al. Association of Statin Use With Disability-Free Survival and Cardiovascular Disease Among Healthy Older Adults. *Journal of the American College of Cardiology*. 2020;76(1):17-27.

**Table 1A: Baseline Characteristics of the Heart SCORE participants undergoing Brain PET Imaging**

Characteristic	All Patients (N=128)	White (N=87)	Black (N=41)
<b>Age</b>			
<b>Mean (SD)</b>	73.7 (4.7)	73.7 (5.0)	73.7 (4.0)
<b>Sex</b>			
<b>Male</b>	46 (31.7%)	37 (35.9%)	9 (21.4%)
<b>Female</b>	99 (68.3%)	66 (64.1%)	33 (78.6%)
<b>Smoking</b>			
<b>Current</b>	6 (4.1%)	2 (1.9%)	4 (9.5%)
<b>Former</b>	64 (44.1%)	44 (42.7%)	20 (47.6%)
<b>Never</b>	75 (51.7%)	57 (55.3%)	18 (42.9%)
<b>Diabetes</b>	7 (4.8%)	4 (3.9%)	3 (7.1%)
<b>Hypertension</b>	51 (35.2%)	28 (27.2%)	23 (54.8%)
<b>Total Cholesterol (SD)</b>	217 (38.9)	219 (36.2)	214 (45.3)
<b>HDL-C (SD)</b>	59.5 (15.3)	58.9 (15.0)	61.0 (16.2)
<b>Triglycerides</b>	119 (71.9)	128 (77.9)	96.6 (48.7)
<b>Systolic BP, mmHg</b>	133 (18.1)	132 (18.6)	137 (16.1)
<b>Diastolic BP, mmHg</b>	79.8 (9.23)	78.8 (9.18)	82.2 (9.00)
<b>Midlife ASCVD Risk</b>			
<b>&lt;=5.5%</b>	62 (42.8%)	53 (51.5%)	9 (21.4%)
<b>5.5%-7.5%</b>	25 (17.2%)	18 (17.5%)	7 (16.7%)
<b>7.5%-15%</b>	46 (31.7%)	26 (25.2%)	20 (47.6%)
<b>&gt;15%</b>	12 (8.3%)	6 (5.8%)	6 (14.3%)

Abbreviations: SD; standard deviation, HDL-C; high density lipoprotein cholesterol, BP; blood pressure, ASCVD; atherosclerotic cardiovascular disease

**Table 1B: Baseline Characteristics of the Heart SCORE participants undergoing Brain MRI Imaging**

<b>Variable</b>	<b>Heart SCORE Study Cohort</b>
<b>Total Population</b>	60
<b>Age, yrs (mean±SD)</b>	73.1 ±4.6
<b>Female n (%)</b>	36 (60%)
<b>White n (%)</b>	41 (68.3%)
<b>Black n (%)</b>	19(31.7%)
<b>&gt;College Education n (%)</b>	37 (38%)
<b>Hypertension n (%)</b>	23 (38%)
<b>Smoking n (%)</b>	3 (5%)
<b>Diabetes Mellitus n (%)</b>	2 (3.3%)
<b>Total Cholesterol mg/dL (mean±SD)</b>	218.5±41.1
<b>HDL-C mg/dL (mean±SD)</b>	58.2±15.5
<b>Systolic BP mmHg (mean±SD)</b>	134.2±19.1
<b>hsCRP</b>	1.5 (0.7, 4.2)
<b>ASCVD risk score</b>	0.08±0.06

Abbreviations: SD; standard deviation, HDL-C; high density lipoprotein cholesterol, BP; blood pressure, ASCVD; atherosclerotic cardiovascular disease

**Table 2a: Midlife 10 year ASCVD Risk and Association with Brain Biomarkers of Alzheimer’s Disease on PET Imaging**

ASCVD Risk Score	Brain Amyloid Deposition OR (95% CI)	Neurodegeneration OR (95% CI)
≤5.5%	Reference	Reference
5.5% - <7.5%	0.65 (0.17-2.08)	2.73 (0.96-7.79)~
7.5% - <15%	0.42 (0.13-1.20)	<b>3.27 (1.33-8.03)*</b>
≥ 15%	1.14 (0.23-4.46)	<b>6.98 (2.44-19.95)*</b>

~ p-value < .1; \* p-value < .05

Abbreviations: ASCVD; atherosclerotic cardiovascular disease, RR; relative risk, CI; confidence interval.

Amyloid deposition by Pittsburgh compound B uptake on imaging.

**Table 2b: Midlife 10 year ASCVD Risk and its Association with Neurodegeneration Stratified by Race**

ASCVD Risk Score	White		Black	
	RR (95% CI)	P value	RR (95% CI)	P value
≤5.5%	Reference		Reference	
5.5% - <7.5%	2.32 (0.52-10.35)	0.27	2.03 (0.45-9.06)	0.36
7.5% - <15%	3.32 (0.94-11.77)	0.06	1.46 (0.40-5.40)	0.57
≥ 15%	<b>8.46 (1.89-37.88)</b>	<b>0.01</b>	2.55 (0.57-11.42)	0.22

Abbreviations: ASCVD; atherosclerotic cardiovascular disease, RR; relative risk, CI; confidence interval



**Table 3: Association of 10 Year Atherosclerotic Cardiovascular Risk Score with White Matter Hyper intensities on Brain MRI**

a) **Linear Regression with ASCVD as Continuous Variable**

ASCVD Risk Score	Estimate	SE	p-value
<b>Model 1</b>	<b>0.51</b>	<b>0.21</b>	<b>0.02</b>
<b>Model 2</b>	<b>0.42</b>	<b>0.22</b>	<b>0.05</b>

\* Regression coefficient was for 1SD (=0.089) increment.

\* Model 1= uncorrected

\*Model 2= adjusted for education and hsCRP

b) **Linear Regression with ASCVD Score as Categorical Variable**

Model	ASCVD risk score Categories	Estimate	SE	p-value
<b>Model 1</b>	5.5%-<7.5%	0.25	0.50	0.62
	7.5% - <15%	0.66	0.35	0.06
	≥ 15%	<b>0.98</b>	<b>0.50</b>	<b>0.05</b>
<b>Model 2</b>	5.5%-<7.5%	0.23	0.51	0.65
	7.5% to <15%	<b>0.73</b>	<b>0.34</b>	<b>0.04</b>
	≥ 15%	0.67	0.52	0.21

\*

Model 1= uncorrected

Model 2= adjusted for education and hsCRP

**Table 4: Spearman Correlation of PiB outcomes and normalized white matter hyperintensities volume**

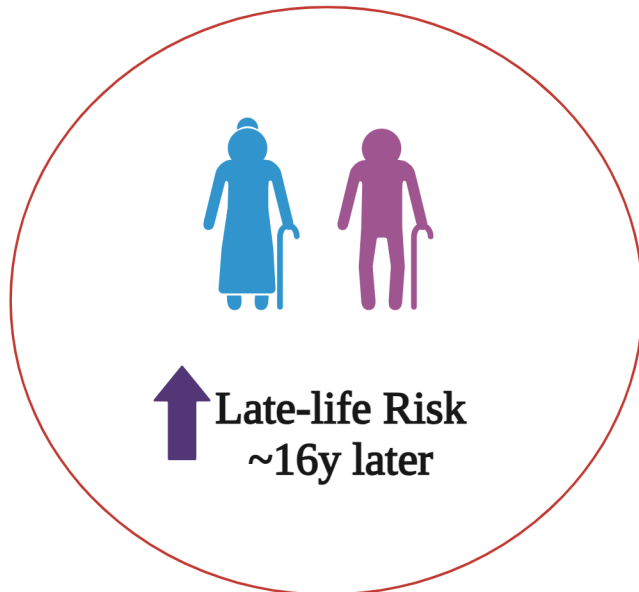
<i>N = 57</i>		
<b>SUVR (scan)</b>	<b>Spearman's Correlation</b>	<b>p-value</b>
<b>Anterior Cingulate</b>	0.02	0.89
<b>Superior Frontal</b>	0.16	0.23
<b>Orbito Frontal</b>	-0.12	0.36
<b>Lateral Temporal</b>	0.01	0.97
<b>Parietal</b>	0.14	0.29
<b>Precuneus</b>	0.11	0.41
<b>Global</b>	0.09	0.51
<b>Braak1</b>	-0.02	0.87
<b>Braak2</b>	-0.15	0.28
<b>Braak3</b>	-0.01	0.93
<b>Braak4</b>	-0.15	0.27
<b>Braak5noSTR</b>	-0.14	0.31
<b>Braak6</b>	-0.09	0.50

Abbreviations: SUVR; standardized uptake value ratio (SUVR), PiB; Pittsburgh compound B

# Central Illustration: Ten Year ASCVD Risk Score in Midlife Predicts Brain Neurodegeneration and White Matter Hyperintensities in Latelife



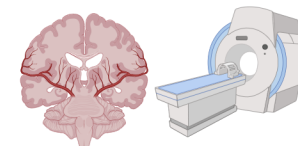
Midlife 10-year ASCVD Risk Score



Late-life Risk  
~16y later



Neurodegeneration  
OR = 6.98 (2.44-19.95);  $p < 0.01$



White Matter Hyperintensities  
 $\beta = 0.42 \pm 0.22$ ;  $p = 0.05$