

1 **Supplementary Information for “Modeling the impact of prioritizing first or second**
2 **vaccine doses during the 2022 mpox outbreak”**

3 **S.1: Network parameters**

4 Parameters for dynamic network were taken from a nationally distributed survey of sexual
5 behaviors among MSM from 2017-2019 [5]. We recognize that sexual networks among MSM
6 may have been impacted by Covid-19, but extensive egocentric surveys of sexual behavior
7 among MSM taken after Covid-19 restrictions were implemented and relaxed have not been
8 published. Thus, the ARTnet survey represents the most up to date and thorough source of sexual
9 behavior data among MSM. Where necessary, ARTnet data was supplemented by prior surveys
10 of sexual behavior among MSM in Atlanta [23] (Table S1).

11 ARTnet reports the proportion of MSM who have between 0 and 2 ‘Main’ partners and
12 between 0 and 3 ‘Casual’ partners. Individuals with 2 ‘Main’ partners represent a tiny portion of
13 the population (e.g. individuals with 2 ‘Main’ partners and 3 ‘Casual’ partners make up 0.14% of
14 the population). Modeling the behavior of tiny fractions of the population can lead to instability
15 when fitting dynamic network models, so we removed individuals with 2 main partners from the
16 model for this analysis (Table S1).

17 We extracted probabilities per day of engaging in one-time sexual partnerships from
18 supplemental Figure 1 from [5], by taking the average mean of one-time daily partnership
19 probabilities across percentages of the population corresponding to our sexual activity groups.

20 Table S1: Network parameters.

Parameter Description	Value	Source
------------------------------	--------------	---------------

Sexual Network Parameters		
Proportion individuals with 0 main and 0 casual partners	0.30	Weiss KM, Goodreau SM, Morris M, et al. Egocentric sexual networks of men who have sex with men in the United States: Results from the ARTnet study. <i>Epidemics</i> . 2020
Proportion individuals with 0 main and 1 casual partners	0.15	
Proportion individuals with 0 main and 2 casual partners	0.067	
Proportion individuals with 0 main and 3 casual partners	0.070	
Proportion individuals with 1 main and 0 casual partners	0.30	
Proportion individuals with 1 main and 1 casual partners	0.056	
Proportion individuals with 1 main and 2 casual partners	0.028	
Proportion individuals with 1 main and 3 casual partners	0.027	
Mean duration of Main partnerships	1,900 days	
Mean duration of Casual partnerships	930 days	
Probability per day of individual in activity group 1	0	

having a one-time sexual contact		
Probability per day of individual in activity group 2 having a one-time sexual contact	0.0012	
Probability per day of individual in activity group 3 having a one-time sexual contact	0.0052	
Probability per day of individual in activity group 4 having a one-time sexual contact	0.016	
Probability per day of individual in activity group 5 having a one-time sexual contact	0.064	
Probability per day of individual in activity group 6 having a one-time sexual contact	0.30	

Proportion of the population in activity groups 1-5 each	0.19	Jenness SM, Weiss KM, Goodreau SM, et al. Incidence of Gonorrhea and Chlamydia Following Human Immunodeficiency Virus Preexposure Prophylaxis Among Men Who Have Sex With Men: A Modeling Study. Clin Infect Dis. 2017
Proportion of the population in activity group 6	0.05	
Mean difference between square roots of ages of Main partners	0.464	
Mean difference between square roots of ages of Main partners	0.586	
Mean difference between square roots of ages of Main partners	0.544	
Proportion of population who are exclusively insertive	0.242	
Proportion of population who are exclusively receptive	0.321	
Proportion of population who are versatile	0.437	
Probability of having sexual contact per timestep with Main partner	0.22	

Probability of having sexual contact per timestep with Casual partner	0.14	
Probability of having sexual contact per timestep with one-time partner	1	

21

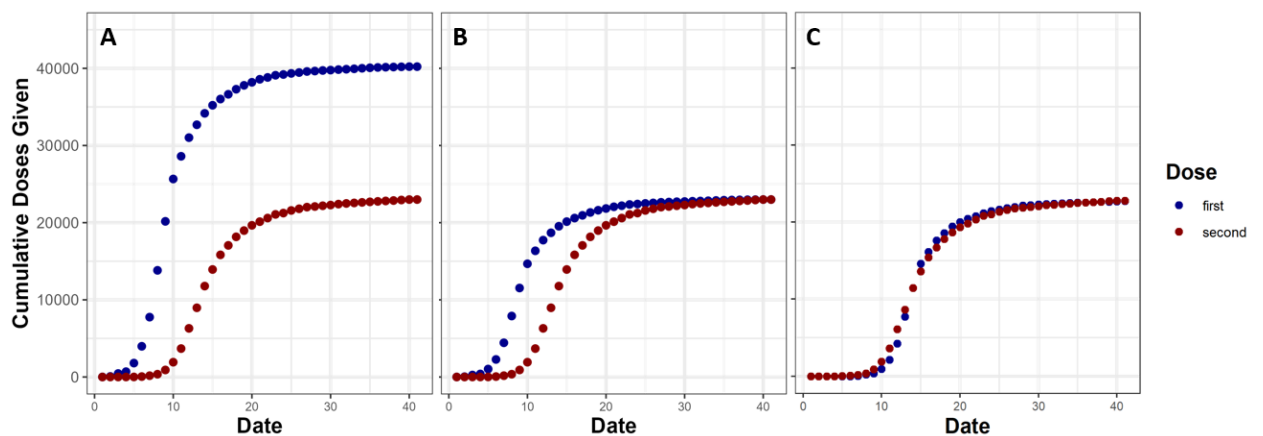
22 **S.2: Calculating time between first and second dose administration when doses are pre-**
 23 **allocated**

24 Individuals receiving a full course of the JYNNEOS® vaccine are currently
 25 recommended to wait 4 weeks between doses. However, logistical issues often prevent patients
 26 from completing the two doses exactly 4 weeks apart, even when doses are available. Thus, for
 27 our ‘second-dose priority’ scenario, where doses were pre-allocated for individuals, we estimated
 28 the mean time that would pass between first and second doses in a pre-allocation scenario.

29 While NYC employed a ‘first-dose priority’ strategy, CDC guidance at the beginning of
 30 the mpox outbreak recommended that all individuals complete a full course of JYNNEOS at the
 31 recommended schedule. Thus, it is reasonable to assume that many jurisdictions pre-allocated a
 32 full 2-dose course to individuals. To parameterize time between doses in our ‘second-dose
 33 priority’, we measured the average time between doses in California, Washington D.C., and
 34 Illinois: three jurisdictions with large early mpox outbreaks.

35 We measured time between doses by fitting the transformed number of cumulative first
 36 doses administered over time to the number of cumulative second doses over time in each of

37 these jurisdictions. We first multiplied the cumulative number of first doses administered over
38 time by the percent of individuals receiving a first dose who eventually received a second dose in
39 each jurisdiction. We treat the resulting data as the cumulative number of first doses
40 administered to individuals who would eventually receive their second dose. We then shifted the
41 cumulative number of first doses administered forward in time $x = [1, 2 \dots 10]$ weeks. We
42 calculate the sum of square differences between the first and second dose curves after shifting
43 the first dose forward by $x = [1, 2 \dots 10]$. We treat the value of x that results in the smallest sum
44 of square differences as a proxy for mean time between first and second vaccine doses (Figure
45 S1).



46

47 **Figure S1:** Visualization of method for estimating average time between first and second dose
48 recipients. In panel A, we show simulated cumulative first and second dose administration. In
49 panel B, we multiply cumulative first doses by the proportion of individuals who go on to get
50 second doses. In panel C, we shift the cumulative first dose curve forward by 5 weeks,
51 minimizing sum of squared differences between the curves.

52

53 We estimate that on average 5 weeks passed between first and second vaccine dose
54 administration for California, Illinois, and Washington D.C. We thus delay second dose
55 vaccination by 5 weeks in our ‘second-dose priority’ scenario.

56 We note that our ‘second-dose priority’ scenario will overestimate the potential benefit of
57 pre-allocating doses, because we do not account for individuals being pre-allocated doses and
58 then being unable or unwilling to show up for their second dose.

59 **S.3: Calculating per-exposure vaccine efficacy**

60 Here, we calculate the per-exposure reduction in transmission probability due to
61 vaccination, or per-exposure vaccine efficacy. The vaccine effectiveness (the percent reduction
62 in infected individuals in the vaccinated vs. control arm of the trial, E), can be calculated as

$$63 \quad E = 1 - \frac{1 - (1 - \mu(1 - \delta))^c}{1 - (1 - \mu)^c}$$

64 Via the probability of transmission per mpox exposure (μ), the underlying per-exposure vaccine
65 efficacy (δ), and the number of infected individuals that people in an effectiveness trial contacted
66 during the trial, filtering out those who had no exposures (c).

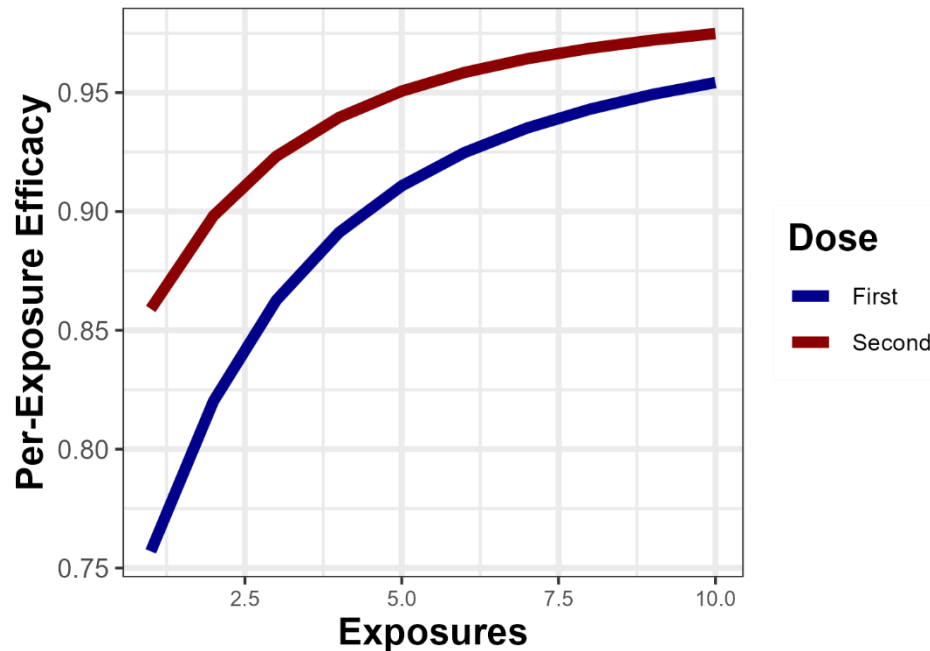
67 Thus, given a reported vaccine effectiveness, the per-exposure vaccine efficacy is given by

$$68 \quad \delta = 1 - \frac{1 - (1 - (1 - E)(1 - (1 - \mu)^c))^{\frac{1}{c}}}{\mu}$$

69 If $c = 1$, then $\delta = E$. However, if $c > 1$ then $\delta > E$ (Figure S2).

70 For the purposes of this study, we assume that individuals in the JYNNEOS® effectiveness
71 study [11] were exposed to mpox no more than once. However, it is likely that some individuals

72 in the effectiveness study were exposed multiple times, and thus we underestimate per-exposure
73 vaccine efficacy. Thus, we reran our analysis using higher vaccine efficacy estimates (S.5).



74

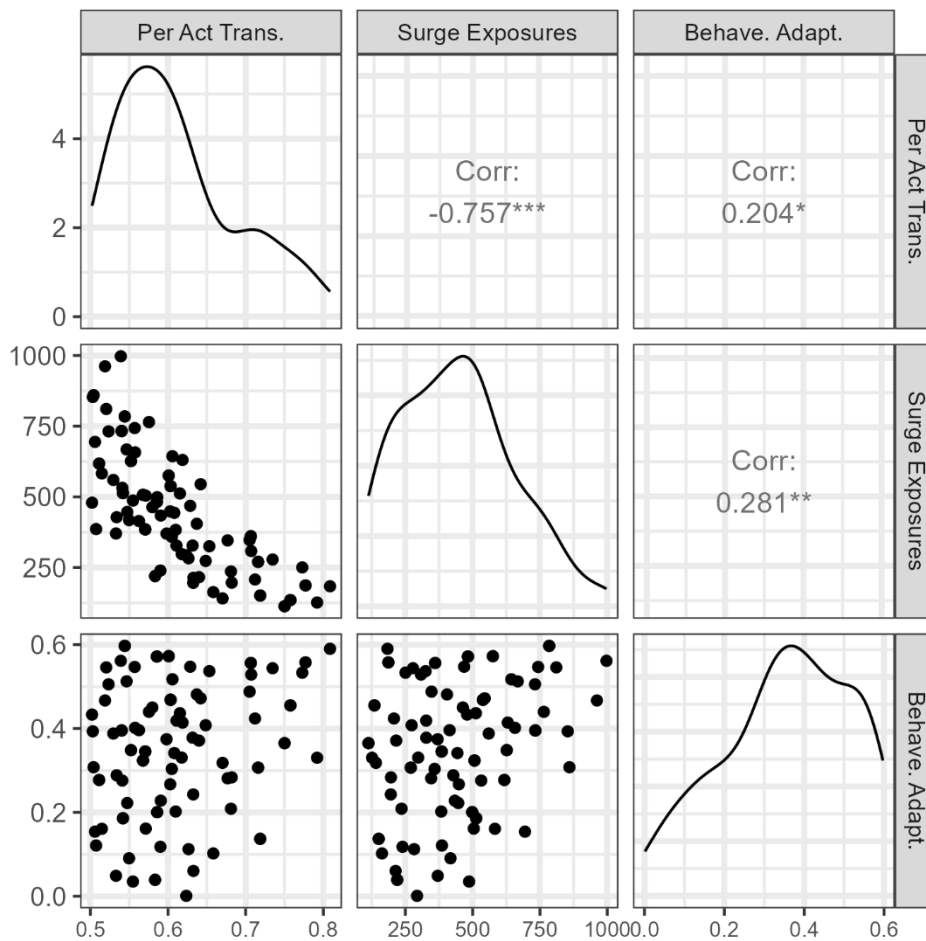
75 **Figure S2:** Here we show the derived per-exposure reductions in transmission probability due to
76 one or two vaccine doses on the Y-axis, vs the number of assumed mpox exposures for vaccine
77 effectiveness trial participants on the x-axis.

78 **S.4: Posterior distributions of fit model parameters**

79 Our fitting procedure drew 100 posterior parameter sets from our 1000 prior parameter
80 sets, with the likelihood of a set being drawn being based on the negative binomial likelihood of
81 the corresponding model output generating observed daily incident cases. We sampled with
82 replacement, and thus our posterior distribution consists of 75 unique parameter sets.

83 In our prior parameter sets, all parameters were drawn from a uniform distribution, and
84 parameters were not correlated with one another across sets. In our posterior distribution, we find

85 that across parameter sets, per-exposure transmission probabilities are significantly negatively
 86 correlated with the number of individuals infected via extra-network contacts during the ‘surge
 87 period’ (‘surge exposures’) (Figure S3). We also find that maximum behavioral adaptation is
 88 positively correlated with ‘surge exposures’. This indicates that parameter sets with disparate
 89 parameter combinations can generate similar epidemic curves. E.g., a parameter set with low
 90 per-exposure transmission probability and a high number of ‘surge exposures’ could generate a
 91 similar epidemic curve as a parameter set with a high per-exposure transmission probability and
 92 a low number of ‘surge exposures’. This means that this analysis should not be used to infer the
 93 value of any one of these parameters individually.



95 **Figure S3:** Here we show posterior distributions of the parameters in our model that were fit to
96 incident case data, and correlations between those parameters. ‘Per Act Trans.’ indicates the
97 probability of mokeypox virus transmission per contact between a susceptible and an infectious
98 individual. ‘Surge Exposures’ indicates the number of individuals infected via extra-network
99 contacts during the ‘surge period’ from June 26 - July 10. ‘Behave. Adapt.’ indicates behavioral
100 adaptation, or the maximum percent reduction in one-time and casual sexual contacts due to the
101 perceived risk of mpox. Panels show scatterplots of parameters across posterior parameter sets
102 (bottom left panels), the posterior distribution of fit parameters (top-left to bottom-right), and
103 correlations between parameters across posterior parameter sets (top-right panels).

104

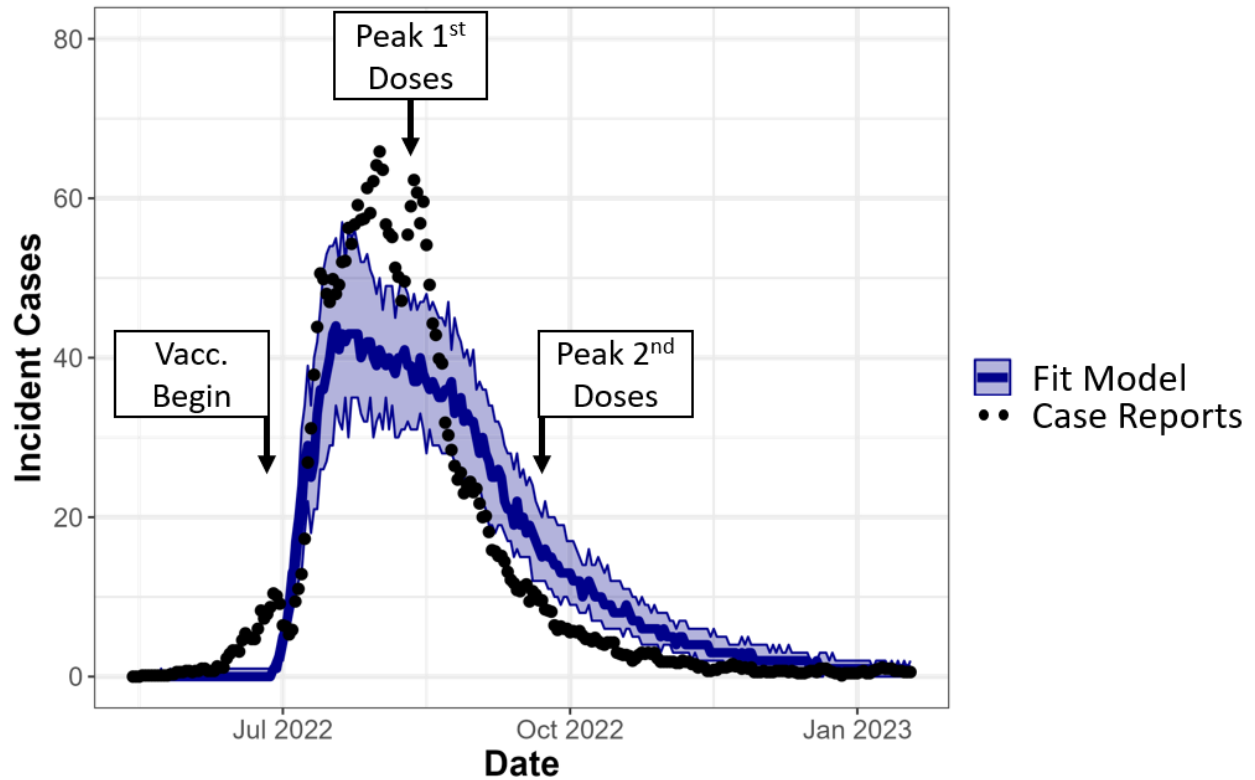
105 **S.5: Sensitivity analysis of higher per-exposure vaccine efficacy**

106 Here, we redo analysis with higher per-exposure vaccine efficacy estimates (85% for first dose
107 and 95% for second dose) to reflect uncertainty in translating vaccine effectiveness to per-
108 exposure vaccine efficacy. We find that when running our analysis with these higher per-
109 exposure vaccine efficacy values, The strategies do not dependably differ from one another in
110 terms of cases averted (Figure S6).

111

112

113



115

116 **Figure S4:** Repeat of Figure 2 with increased vaccine efficacy estimates. Mpxv model fit to data.

117 Dots indicate the 1 week running mean of incident daily cases in NYC, used as our fitting target.

118 Blue line represents median incident daily cases of model runs from the 100 parameter sets

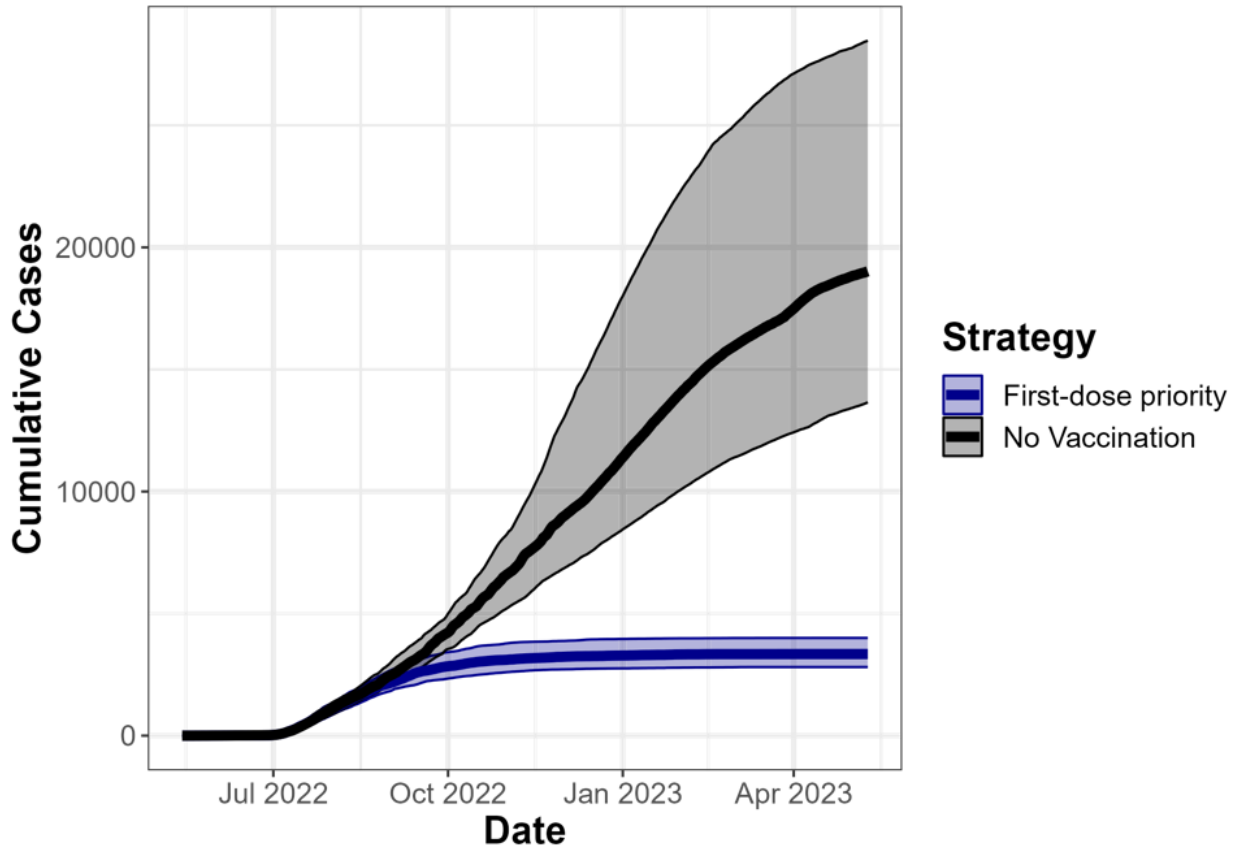
119 selected in our fitting procedure, with band representing interquartile range of model runs,

120 assuming a 'first-dose priority' strategy. Labels indicate the beginning of pre-exposure

121 vaccination on June 26th, peak administration of first doses, occurring the week of August 7th,

122 and peak administration of second doses, occurring the week of September 18th.

123

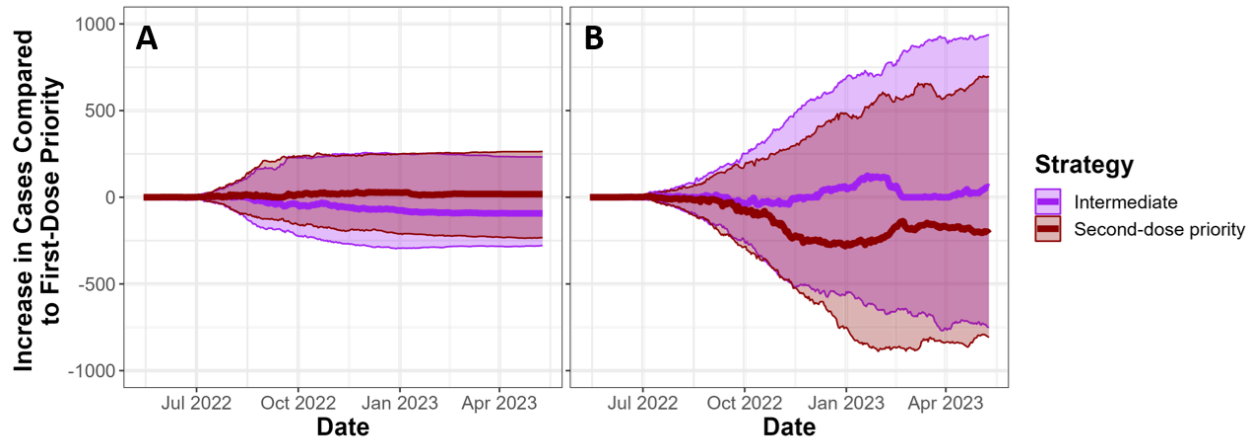


124

125 **Figure S5:** Repeat of Figure 3 with increased vaccine efficacy estimates. Estimated cumulative
 126 cases over a year under the ‘first-dose priority’ strategy employed by NYC compared to a ‘no
 127 vaccination’ scenario. Lines represent median cumulative cases of model runs from the 100
 128 parameter sets selected in our fitting procedure, with bands representing interquartile ranges of
 129 model runs.

130

131



132

133 **Figure S6:** Repeat of Figure 4 with increased vaccine efficacy estimates. Comparison of
134 different vaccine administration strategies*. We show the difference in cases under the
135 ‘intermediate’ or ‘second-dose priority’ strategy compared to the ‘first-dose priority’ strategy on
136 the Y-axis, over time on the X-axis. Solid lines indicate median values across fit parameter sets,
137 and transparent bands indicate interquartile ranges across parameter sets. Panel A uses vaccine
138 administration numbers shown in Figure 1, while panel B cuts doses given by 75% to emulate
139 jurisdictions with lower dose availability. All interquartile values overlap 0 at the end of this
140 timeseries, indicating that strategies do not dependably differ from one another in terms of cases
141 averted.

142 *First-dose priority: first and second doses in model are based on first and second doses administered by
143 NYC. Intermediate: Individuals who are eligible for a second dose receive priority for available doses, but
144 there is no preallocation. Second-dose priority: doses are preallocated to ensure that all individuals
145 receive full course of the vaccine.