

1 **Congenital diaphragmatic eventration: Should we maintain**
2 **surgical treatment? A retrospective multicentric cohort study.**

3 Lymeymey Heng^a, Khalid Alzahrani^a, Naziha Khen-Dunlop^b, Nicoleta Panait^c, Erik Hervieux^d, Lucie
4 Grynberg^e, Olivier Abbo^f, Frédéric Hameury^g, Frédéric Lavrand^h, Olivier Mailletⁱ, Aurore
5 Haffreingue^j, Anne Lehn^k, Stephan De Napoli Cocci^l, Edouard Habonimana^m, Jean-Luc Michelⁿ,
6 Louise Montalva^o, Quentin Ballouhey^p, Arnaud Fotso Kamdem^q, Jean-François Lecompte^r, Antoine
7 Liné^s, Anna Poupalou^t, Pierre Maignan^u, Loren Deslandes^v, Guillaume Podevin^a, Françoise Schmitt^a

8 ^a Paediatric Surgery Unit, Federation of paediatrics, University Hospital, Angers, France

9 ^b Paediatric Surgery Department, Hôpital Necker-Sick Children, AP-HP, Paris, France

10 ^c Paediatric Surgery Department, AP-HM, Marseille, France

11 ^d Paediatric Surgery Department, Trousseau Hospital, AP-HP, Paris, France

12 ^e Paediatric Surgery Department, University Hospital, Rouen, France

13 ^f Paediatric Surgery Department, University Hospital, Toulouse, France

14 ^g Paediatric Surgery Department, Hospices civils de Lyon, Bron, France

15 ^h Paediatric Surgery Department, University Hospital, Bordeaux, France

16 ⁱ Paediatric Surgery Department, University Hospital, Montpellier, France

17 ^j Paediatric Surgery Department, University Hospital, Caen, France

18 ^k Paediatric Surgery Department, Hôpital de Hautepierre, University Hospital, Strasbourg, France

19 ^l Paediatric Surgery Department, University Hospital, Nantes, France

20 ^m Paediatric Surgery Department, South Hospital, University Hospital, Rennes, France

21 ⁿ Paediatric Surgery Department Nord, University Hospital -Réunion, Saint-Denis, France

22 ^o Paediatric Surgery Department, Robert Debré Hospital, AP-HP, Paris, France

23 ^p Paediatric Surgery Department, University Hospital, Limoges, France

24 ^q Paediatric Surgery Department, University Hospital, Besançon, France

25 ^r Paediatric Surgery Department, University Hospital-Lenval, Nice, France

26 ^s Paediatric Surgery Department, University Hospital, Reims, France

27 ^t Paediatric Surgery Department, HUDERF, Bruxelles, Belgique

28 ^u Paediatric Surgery Department, University Hospital, Tours, France

29 ^v Paediatric Surgery Department, University Hospital, Clermont-Ferrand, France

30

31 **Corresponding author:**

32 Françoise Schmitt, MD, PhD

33 Paediatric Surgery Department, University Hospital of Angers

34 4, Rue Larrey; 49933 ANGERS cedex 9, FRANCE

35 Tel:+33.2.41.35.42.90

36 Fax: +33.2.41.35.36.76

37 Mail: FrSchmitt@chu-angers.fr

38

39 NOTE: This preprint reports new research that has not been certified by peer review and should not be used to guide clinical practice.

40 **Abstract**

41

42 **Background:** Congenital diaphragmatic eventration (CDE) is an infrequent congenital pathology
43 without consensus of treatment. This study assessed current care practices for this pathology in
44 children in France.

45 **Methods:** Retrospective study on cohort data conducted in 22 paediatric surgery departments,
46 including patients less than 16 years of age followed for CDE since 2010. Patients with surgical or
47 conservative treatment were compared.

48 **Results:** 139 patients were included, with a median age of 8 [1 – 16] months. CDE occurred in boys in
49 68.3% and was right-sided in 66.7% of the cases. It was symptomatic in 65% of the cases, with a
50 respiratory component for 97% of these patients. The primary indication for treatment, essentially
51 depending on the clinical respiratory impairment and the level of the diaphragm, was surgery for
52 diaphragmatic plication in 87 cases (62%) or clinical follow-up for the 52 others, 25 of whom were
53 operated on secondarily. There were 32 early per- or postoperative complications (29%), and 8
54 recurrences of eventration (7%). With a median follow-up of 28 months, the median level of
55 diaphragmatic dome fell from the 6th to the 9th back rib, and the rate of respiratory symptoms from
56 64% to 14%, in both surveyed and surgically treated patients.

57 **Conclusions:** CDE is mainly diagnosed in newborn or infant boys and right-sided. Diaphragmatic
58 plication may be the best treatment in symptomatic patients with a dome level upper the 6th posterior
59 rib, but exposes them to a 29% complication rate and 7% of recurrence.

60 ClinicalTrials NCT04862494, April 28, 2021.

61

62 **Key-words:** congenital diaphragmatic eventration, diaphragmatic plication, thoracoscopic
63 plication, mini-invasive surgery, robot-assisted thoracoscopy.

64

65 **Running title:** Updates in congenital diaphragmatic eventrations.

66

67

68 **What's new?**

69 Boys are indeed more affected than girls (68.3%), but left-side eventration only happens in
70 33% of cases.

71 As compared to conservative management, surgery may be positively associated with
72 diaphragmatic level improvement, but not with long term resolution of symptoms.

73

74 **Funding:** This research did not receive any specific grant from funding agencies in the
75 public, commercial, or not-for-profit sectors.

76 **Competing Interests:** The authors declare that they have no competing interests.

77

78 **Abbreviations:**

79 CDE: congenital diaphragmatic eventration

80 CNIL: Commission Nationale de l'Informatique et des Libertés

81 CT: Computed Tomography

82 DDL: diaphragmatic dome level

83 ICS: intercostals space

84 MRI: magnetic resonance imaging

85 NA: not applicable

86 OR: odds ratio

87 PFT: pulmonary function test

88 ROC: Receiver Operating Characteristics

89

90

91

92

93

94 **Introduction**

95 Congenital diaphragmatic eventration (CDE) is a rare defect in the central muscular portion of
96 the diaphragm, caused by an abnormal migration of myoblast from the upper cervical somites during
97 embryogenesis [1, 2]. Occurring in less than 0.05% of newborns, it causes paradoxical motion of the
98 diaphragm as well as a lowering in the thoracic space for lung expansion, leading to impaired
99 ventilation, from mild dyspnea to neonatal respiratory distress, asthma, recurrent infections, etc. When
100 left-sided, it can lead to gastric ascension and plication causing impaired gastric emptying associated
101 with dysphagia and vomiting [3]. In the literature, a surgical treatment, consisting in a diaphragmatic
102 plication, has to be proposed to symptomatic patients [1, 4, 5], with immediate and long-term good
103 results [6], but some authors advise surgery even in asymptomatic patients with a significant ascent of
104 the diaphragmatic dome [4, 7] to preserve lung development and function in neonates.

105 The aims of the study were to (1) describe current practices regarding CDE management for
106 CDE in children in France, and (2) compare outcomes of surgical and conservative treatment of CDE.

107

108 **Material and Methods**

109 1) Population

110 We conducted a retrospective multicentric cohort study in all willing French and French
111 speaking paediatric surgery departments. All patients diagnosed with CDE under the age of 16
112 between 2010-01-01 and 2021-08-31, were included in this study. Patients' and parents' consent to
113 this inclusion was sought through an information letter addressed to the parents. First screening for
114 eligible patients was completed thanks to French diagnosis and treatment classification. Exclusion
115 criteria then were diaphragmatic hernia and acquired diaphragmatic eventration, defined as secondary
116 to surgery, obstetrical trauma or oncologic aetiology.

117

118 Clinical factors recorded were: sex, age at diagnosis and treatment, associated non-causal
119 pathologies, relevant associated pulmonary, digestive and orthopaedics symptoms, side of the
120 eventration, results of medical imaging studies including thoracic radiographs, CT scan and/or

121 magnetic resonance imaging (MRI). Late diagnosis was defined as a diagnosis beyond 12 months of
122 age. Management data included the choice, reason and type of surgical or medical treatment, and if
123 applicable, the occurrence of peroperative complications and early postoperative events. Postoperative
124 and long-term survey data were clinical symptoms and level of the diaphragmatic dome on chest
125 radiographs, complications with their severity level assessed through the Clavien-Dindo classification
126 [8], need for additional hospital stays or re-operations.

127 Conservative treatment was defined as clinical and radiological follow-up. Failure of
128 conservative treatment was defined as the need for diaphragmatic plication. Success of treatment was
129 defined as the improvement or the resolution of symptoms.

130

131 2) Outcome measures

132 The primary outcome measure was the linear description of the cohort of paediatric patients,
133 to expose current trends of care. Comparison between surgical and conservative treatments was a
134 secondary outcome. A subgroup analysis of the symptomatic patients at baseline was performed too,
135 with a comparative study between patients whose symptoms resolved or persisted.

136 3) Ethics

137 This study was performed in line with the principles of the Declaration of Helsinki. Approval
138 was granted by the Ethics Committee of the University Hospital of Angers and is registered under the
139 reference 2021-013. The associated registry has been approved by the French National Commission on
140 Informatics and Liberty CNIL (Commission Nationale de l'Informatique et des Libertés, authorization
141 ar21-001v0). The study has been registered in ClinicalTrials.gov under the identifier number
142 NCT04862494 (April 28, 2021).

143

144 4) Statistical analysis

145 Statistical analysis was performed using IBM-SPSS 29.0.0.0 and GraphPad Prism 8.0.2 for
146 Windows software. All tests were 2-sided and the statistical level for significance was set at $p < 0.05$.
147 Patients' characteristics were described as median with interquartile range or mean +/- standard
148 deviation for continuous variables and as percentages for qualitative variables. Comparative analysis

149 between groups of patients operated on or with conservative treatment was performed using the non
150 parametric Mann-Whitney test for quantitative variables after assessing the absence of normality of
151 the distribution with a Shapiro-Wilk normality test, and using the Fisher's exact test for qualitative
152 variables. Factors associated with occurrence to surgical treatment and efficiency of surgical treatment
153 (vs conservative treatment) and with success (determined as resolution of symptoms) were determined
154 using logistic regression. First, univariate analysis was used to select relevant variables for each of the
155 above mentioned items, and variables with a p-value below 20% entered in the final model.
156 Multivariate analysis was carried out using a backward stepwise likelihood-ratio test and data were
157 expressed as odds-ratio (OR) with 95% confidence intervals.

158

159 **Results**

160 1) Description of the patients

161 Among the 22 paediatric surgery departments which took part in the study, there were 175
162 patients with a diagnosis of diaphragmatic eventration. Thirty six of them (20.6%) were excluded from
163 further analysis because of their acquired mechanism, as detailed on the flowchart (**Fig. 1**).

164 The study population included 139 patients with CDE, composed of 68.3% boys, with a mean
165 gestational age at birth of 37.2 +/- 3.8 weeks. Diaphragmatic eventration was left-sided in 33.1%, with
166 only one case of bilateral CDE. Associated pathologies were present in 48 (34.5%) patients, including
167 12 syndromic or genetic forms, 10 cardiovascular pathologies, 13 orthopaedic abnormalities, 7
168 digestive afflictions (including 3 cases of inguinal hernia), 6 uro-genital malformations and 5
169 associated broncho-pulmonary abnormalities. Median age at diagnosis was 8 [1 – 16] months], with 39
170 patients (28.1%) having a late diagnosis (>12 months). Ninety patients (64.7%) presented with
171 symptoms, mainly respiratory (n = 87), with 33 (37.9%) of them presenting obstructive signs (asthma,
172 bronchial hyper-reactivity, bronchiolitis), 31 (35.6%) with neonatal respiratory distress or later
173 dyspnea, and 20 (23.0%) with recurrent pulmonary infections. Orthopaedic abnormalities (scoliosis or
174 chest asymmetry) occurred in 9 (6.5%) patients and gastro-intestinal symptoms, in 17 (11.2%).
175 Among the latter, clinical presentation did not differ according to the CDE side, with 8 patients
176 presenting with gastro-oesophageal reflux (47%), 5 (29%) with failure to thrive and 4 (23.5%) with

177 anorexia, dysphagia or vomiting/upper occlusive signs, but appeared to be more present in left-sided
178 CDE (10/46, 21.7%) than in right-sided ones (7/94, 7.4%, $p = 0.025$).

179 All patients had chest radiographs, showing a dome at a median level of the 6th posterior rib
180 [5-7], and 84 (60.4%) of them completed the diagnosis by CT-scan or MRI, on which 50 (59.5%) did
181 not have associated pulmonary abnormalities. No correlation could be found between the presence of
182 symptoms and the level of the dome or CT-scan pulmonary abnormalities.

183

184 Initial treatment choice was conservative treatment for 52 (37.4%) patients, with a median age
185 of 2 [0 – 10] month at diagnosis. With a median follow-up of 9 [4 – 36] months, this conservative
186 treatment appeared to be sufficient in 27 patients (52%). However, it failed in 25 (48%), that
187 eventually underwent surgery at a median age of 13.0 [3.5 – 21.5] months, after a median delay of 90
188 [16 - 330] days. The other 87 (62.6%) patients had a primary indication for surgery. After a median
189 23.5 [7.0 - 57.3] months of survey of the whole cohort of patients, only 30 (21.6%) patients presented
190 with symptoms, and 22 of them (19.6%) had experienced surgical complications. On the last chest
191 radiography, median level of the dome was set at the 8th intercostal space [rib 8 - 9], with an
192 improvement of this level for 77 (81.9%) patients and stabilization for 14 (14.9%) others.

193 Among the patients presenting with symptoms at baseline, 22 (25.3%) had persistent
194 symptomatology at the end of survey, regardless of their treatment group. On univariate analysis, there
195 was no difference between them and resolved patients ($n = 65$) in terms of baseline characteristics,
196 treatment options and outcomes, except for the sex ratio (13.6% vs 41.5% girls, $p = 0.02$) and the
197 absence of surgical complication (27.3% vs 0%, $p < 0.0001$). After logistic regression, only the female
198 sex appeared to be predictive for symptom resolution (OR = 10.5 [1.3 – 88.8], $p = 0.03$).

199

200 2) Comparison of operated and non operated patients' outcomes

201 *Baseline characteristics*

202 A total of 112 patients (80.5%) eventually underwent surgical treatment, whereas 27 (19.5%)
203 were managed using conservative treatment (CoT group). Both groups were similar in terms of age at
204 diagnosis, associated comorbidities and side of the eventration (**Table 1**). However, patients that

205 underwent surgical treatment were 1.7 times more likely to be symptomatic (72.3% vs 40.7%, $p =$
206 0.003), had a higher dome elevation (6 [5 – 7] vs 7 [6 – 8], $p < 0.0001$) and were more likely to have
207 pulmonary abnormalities on CT-scan (57.8% vs 20.0%, $p < 0.0001$). To note, none of these factors
208 appeared to be associated with the choice of treatment on multivariate analysis.

209 A subgroup analysis of the patients operated on as first intention (S1 group, $n = 87$) or after
210 failure of conservative treatment (S2 group, $n = 25$) showed no difference in terms of symptoms
211 frequency, dome level or pulmonary abnormalities on CT-scan (**Table 1**). Median age at diagnosis in
212 the S2 group (1 month [0 – 4]) was equivalent to the one of the CoT group (2 months [0 – 10]) and
213 lower than in the S1 group (9 months [2 – 17], $p=0.001$). Nevertheless, in the S2 group, median
214 duration of conservative treatment before surgery was 90 [16 – 330] days, resulting in similar age at
215 surgery in the S1 and S2 groups (11.5 [5.8 – 21.1] vs 13.0 [3.5 – 21.5] months, $p= 0.9$).

216

217 *Treatments' outcomes*

218 Among patients managed conservatively, none required further hospital stay due to
219 diaphragmatic eventration until the end of follow-up (median 9 months [4 - 36]). Clinical evaluation
220 showed persistent symptoms in 5 (18.5%) patients, all with respiratory events (asthma 3, pulmonary
221 infections 2), and one with an associated thoracic asymmetry. On chest radiographs, the level of the
222 dome was improved in 44.4% of the cases, stable in 27.8% and worsened in 11.1% (**Table2**).

223

224 Surgery was performed at a median age of 12 [5 – 21] months. The surgical approach was
225 abdominal for 28 (25%) patients (12 laparotomies and 16 laparoscopies) and thoracic in the remaining
226 84 (75%) others (thoracotomy 15, thoracoscopy 64 and robot-assisted thoracoscopy 5). After surgery,
227 median duration for intravenous analgesia was 48 [12 – 72] hours, and median hospital stay 4 [3 – 7]
228 days.

229 Perioperative complications occurred in 10 patients (8.9%), with 3 hepatic bleeding, 3
230 pulmonary or pleural breaks, two tracheal tube-related issues and one conversion from thoracoscopy to
231 thoracotomy. There were 22 (19.6%) early postoperative complications, ten out of them being
232 infections, 7 pneumothorax and one chylothorax, 4 atelectasis, 2 relapses of eventration. The

233 repartition of gravity levels of postoperative complications was as follow: 10 Clavien-Dindo grade
234 1(45.5%); 5 grade 2 (22.7%), one of each for grades 3a and 3b (4.5%), and 3 grade 4a (13.5%).

235 In patients that were symptomatic, surgery allowed immediate resolution of respiratory
236 symptoms in 88.3% (n=59/70). However, surgery was less effective in neonates, with only 53.8% (n =
237 7/13) of resolution of neonatal respiratory distress, as compared to 91% (n = 52/57) in symptomatic
238 cases beyond the neonatal period (p = 0.003).

239 With a median postoperative follow-up of 28 months [10 - 60], 9 (8.0%) patients required
240 surgical reintervention: for redo-plication for DE recurrence in 5 cases (4.5%), for diaphragmatic
241 hernia or thoracic evisceration repair in 3 cases (2.7%), and for hiatal hernia repair associated to
242 fundoplication in the last case. The median delay between initial surgery and reintervention was 6 [1 –
243 16] months. Twenty five patients (22.3%) remained symptomatic, with respiratory symptoms for 16
244 (14.3%) of them, including infections for 9 (8.0%), asthma for 6 (5.4%) and a restrictive syndrome for
245 the remaining patient. Four patients presented with GERD (3.6%) and nine (8.0%) with orthopaedic
246 disorders, including 6 scoliosis (4.3%) and 4 chest wall deformities (2.9%). On chest radiographs, the
247 median level of the operated dome was at the 9th rib [8 – 9], with an overall improvement of 2 costal
248 levels [1.7 – 3.0], which was better than in the CoT group (0 [0 -2], p = 0.005). Pre and post-
249 interventions comparison (**Table 2**) found some radiographic improvement in up to 69 (89.6%) cases,
250 stability in 8 (10.4%) cases and worsening in 1 (1.3%) case; these proportions significantly differed
251 from patients that underwent conservative treatment. Multivariate analysis of treatments outcomes
252 confirmed that surgery improved the level of the dome (OR = 11.5, 95%CI [3.2 – 41.7], p<0.0001),
253 but had no impact on the long term resolution of symptoms (OR = 2.1, 95%CI [0.6 – 7.4], p = 0.23).

254

255 **Discussion**

256 With 139 patients over ten years, this study is one of the largest series currently published
257 concerning CDE in children, first making it possible to specify its demographic characteristics. Hence,
258 it has for long been advocated that CDE occurred in boys in almost 80% of the cases and was left-
259 sided in the same proportions [9]. Interestingly, while there was indeed a majority of boys (68.3%) in
260 our series, CDE only concerned the left dome in 46 cases (33.1%). As reported by Le Pimpec-Barthes

261 *et al.* in 2010 [6], previous data were based on less than 150 patients cumulated from about ten studies.
262 The integration of the data of this study with those of the publications made in the last twenty years [4,
263 5, 7, 10–12] now allows for a re-estimation of the rate of CDE in boys at 69.0% (347 out of 503
264 patients) and of left-sided at only 30.4% of the cases (173 / 570 patients).

265 As expected, most of the CDE were discovered during the first months of life, and a majority
266 of the patients presented with symptoms, mostly in the respiratory tract. Among them, no higher
267 representativeness of infectious signs, or obstructive or restrictive syndromes was found. Gastro-
268 intestinal symptoms only occurred in 11% of the cases, and were more present when CDE was left-
269 sided. These findings seem to be concordant with the literature [7, 9].

270 While the diagnosis and the level of the dome were assessed by chest radiographs in all
271 patients, only 60.4% of them had additional imaging, which showed lung compression signs in 59% of
272 the cases. No tumoral or anatomical cause to phrenic nerve compression was identified, which was a
273 reason given by Le Pimpec-Barthes *et al.* [6] for the systematic performance of complementary
274 examinations in late-onset forms. In this series, no correlation could be found between CT-scan
275 pulmonary abnormalities and respiratory symptoms, indication for surgical treatment or subsequent
276 clinical improvement. No functional imaging, such as diaphragm fluoroscopy or dynamic US or MRI,
277 was reported in this series. Indeed, in showing the paradoxical motion of the diaphragm and its
278 potential repercussion on lung expansion [13, 14], these exams may improve surgical indication and
279 efficiency, but these hypotheses remain to be tested.

280
281 Surgical treatment has long been indicated for symptomatic patients [6, 9], and conservative
282 management for asymptomatic or paucisymptomatic patients [15], even though some authors once
283 advocated for systematic diaphragmatic plication to prevent lung growth restriction in neonates [4].
284 More recently, Wu *et al.* [5] have listed the respiratory symptoms relevant for surgery, and Zhao *et al.*
285 [7] have proposed the subsequent criteria for surgical treatment: diaphragmatic elevation ≥ 3
286 intercostals spaces, presence of symptoms attributable to CDE, aggravation of the eventration during
287 clinical follow-up. In this study, it appeared that criteria to surgery in our centres were the presence of
288 symptoms and/or an elevation of the diaphragm $\geq 6^{\text{th}}$ posterior rib, equivalent to Zhao's one.

289 After surgery, 88.3% of the patients experienced immediate resolution of symptoms, at the
290 cost of a median 48 hours of intravenous analgesia, 4 days' hospital stay, and a 28.6% rate of per- and
291 postoperative complications, being graded serious (grades 3 – 4 of the Clavien-Dindo classification) in
292 one third of the cases. When more specifically looking for neonatal respiratory distress, only 53.8% of
293 the patients showed disappearance of symptoms, but our study could not qualify partial respiratory
294 improvement, which may be sufficient for surgical success, as their underlying respiratory condition
295 may be impacted by other factors, such as prematurity, surfactant abnormalities, etc.

296 With more than 2 years of follow-up, 79% of the patients appeared to be clinically resolved,
297 whatever their treatment option, while chest radiographs showed twice the improvement of the
298 diaphragmatic level after surgery than with conservative management (44.4% vs 89.6%, OR = 11.5).
299 On the whole, most series describe prompt and durable improvement or resolution of symptoms after
300 surgery in 91 to 100% of the cases [4, 5, 7, 10, 14], with 0 to 7% of incomplete repair or eventration
301 recurrence [14, 16, 17], which is comparable to our 7.1% recurrence rate. Another explanation for
302 recurrence could be the difficulty to sometimes differentiate CDE from congenital diaphragmatic
303 hernia with a hernia sac, even during surgery, the treatment of which consists of the resection of the
304 sac and hernia repair rather than diaphragmatic plication [18].

305 Pulmonary function tests (PFTs) were not available for our patients, due to the fact that they
306 were too young for this exam. Other studies in older paediatric patients or adults have shown that DE
307 induced a decrease of 20-30% of total lung capacity [5], and that there was a postoperative recovery of
308 10-20% of the forced vital capacity as well as the Tiffeneau-Pinelli index [19–22]. Hence, long-term
309 survey of CDE patients including PFTs may be interesting in assessing efficiency of surgical treatment
310 or for the precocious detection of infra-clinical restrictive symptoms for surveyed patients.

311 The main weakness of our study is its retrospective and multicentric design, exposing it to
312 selection biases such as over-missing non-operated patients or overestimating the number of
313 symptomatic patients, the others often being lost to follow-up. Nevertheless, the rarity of CDE make
314 any prospective monocentric study unrealistic, while this cohort observational study presents an
315 honest reflection of current care practices all over the national territory. As well, association analysis
316 has to be taken as indicative as the small size of comparison groups doesn't always confer sufficient

317 statistical power to definitely conclude. To objectively assess treatment efficiency, ideally systematic
318 PFTs would have been performed, but our patients were mostly too young to have undergone this
319 exam, and so this element could only be implemented in a long term survey in the future. An
320 alternative could be the systematic use of clinical scores for dyspnoea in children. Nevertheless, this
321 study remains one of the largest series of CDE paediatric patients yet published, and allows for a
322 number of conclusions that may help to improve further practices.

323

324 **Conclusion**

325 Congenital diaphragmatic eventration is a rare condition that may impair pulmonary or
326 digestive function. Often diagnosed during the first weeks of life, it may require surgical treatment, but
327 one should be cautious, with regards to the 28% rate of complications and 7% recurrence rate, and
328 knowing that this clinical condition may spontaneously resolve in up to 27% of cases. Indeed, apart
329 from the cases of acute respiratory distress or upper digestive tract occlusion where surgery appears to
330 be essential, surgery has been more strongly associated here with diaphragmatic level
331 improvement on chest radiograph than with symptom resolution.

332

333 **Acknowledgements:** to Mr Ali Gillies from The Lanuage Room (Lyon, France), who
334 performed the English proofreading of the manuscript.

335

336 **References**

- 337 1. Gutt CN, Grabensee R (2015) Diaphragm Plication and Repair. In: Dienemann HC, Hoffmann
338 H, Detterbeck FC (eds) Chest Surgery. Springer Berlin Heidelberg, Berlin, Heidelberg, pp 483–
339 494
- 340 2. Patrini D, Panagiotopoulos N, Bedetti B, et al (2017) Diaphragmatic plication for eventration or
341 paralysis. Shanghai Chest 1:25–25. <https://doi.org/10.21037/shc.2017.08.01>
- 342 3. Favre J-P, Favoulet P, Cheynel N, Benoit L (2005) Traitement chirurgical des éventrations
343 diaphragmatiques. EMC - Chirurgie 2:235–241. <https://doi.org/10.1016/j.emcchi.2005.03.001>

- 344 4. Yazıcı M, Karaca İ, Arıkan A, et al (2003) Congenital Eventration of the Diaphragm in Children:
345 25 Years' Experience in Three Pediatric Surgery Centers. *Eur J Pediatr Surg* 13:298–301.
346 <https://doi.org/10.1055/s-2003-43573>
- 347 5. Wu S, Zang N, Zhu J, et al (2015) Congenital diaphragmatic eventration in children: 12years'
348 experience with 177 cases in a single institution. *Journal of Pediatric Surgery* 50:1088–1092.
349 <https://doi.org/10.1016/j.jpedsurg.2014.09.055>
- 350 6. Le Pimpec-Barthes F, Brian E, Vlas C, et al (2010) Le traitement chirurgical des éventrations et
351 paralysies diaphragmatiques. *Revue des Maladies Respiratoires* 27:565–578.
352 <https://doi.org/10.1016/j.rmr.2010.01.015>
- 353 7. Zhao S, Pan Z, Li Y, et al (2020) Surgical treatment of 125 cases of congenital diaphragmatic
354 eventration in a single institution. *BMC Surg* 20:270. [https://doi.org/10.1186/s12893-020-00928-](https://doi.org/10.1186/s12893-020-00928-z)
355 [z](https://doi.org/10.1186/s12893-020-00928-z)
- 356 8. Dindo D, Demartines N, Clavien P-A (2004) Classification of surgical complications: a new
357 proposal with evaluation in a cohort of 6336 patients and results of a survey. *Ann Surg* 240:205–
358 213. <https://doi.org/10.1097/01.sla.0000133083.54934.ae>
- 359 9. Ortega Deballon P, Facy O, Cheynel N, Rat P (2012) Traitement chirurgical des éventrations
360 diaphragmatiques. *EMC - Techniques chirurgicales - Appareil digestif* 7:1–6.
361 [https://doi.org/10.1016/S0246-0424\(12\)57344-9](https://doi.org/10.1016/S0246-0424(12)57344-9)
- 362 10. Becmeur F, Talon I, Schaarschmidt K, et al (2005) Thoracoscopic diaphragmatic eventration
363 repair in children: about 10 cases. *Journal of Pediatric Surgery* 40:1712–1715.
364 <https://doi.org/10.1016/j.jpedsurg.2005.07.008>
- 365 11. Ghribi A, Bouden A, Braiki M, et al (2015) Diaphragmatic eventration in children. *Tunis Med*
366 93:76–78
- 367 12. Cai Y, Wu Y, Wu Z, et al (2021) Comparative Study of Thoracoscopic and Modified Small
368 Incision Repair for Congenital Diaphragmatic Eventration in Children. *J Laparoendosc Adv*
369 *Surg Tech A* 31:1079–1083. <https://doi.org/10.1089/lap.2021.0110>
- 370 13. Nason LK, Walker CM, McNeeley MF, et al (2012) Imaging of the Diaphragm: Anatomy and
371 Function. *RadioGraphics* 32:E51–E70. <https://doi.org/10.1148/rg.322115127>

- 372 14. Bawazir OA, Banaja AM (2020) Thoracoscopic repair of diaphragmatic eventration in children:
373 a comparison of two repair techniques. *Journal of Pediatric Surgery* 55:1152–1156.
374 <https://doi.org/10.1016/j.jpedsurg.2019.11.019>
- 375 15. Puri P, Nakazawa N (2009) Congenital Diaphragmatic Hernia. In: Puri P, Höllwarth M (eds)
376 *Pediatric Surgery*. Springer Berlin Heidelberg, Berlin, Heidelberg, pp 307–313
- 377 16. Fujishiro J, Ishimaru T, Sugiyama M, et al (2016) Minimally invasive surgery for diaphragmatic
378 diseases in neonates and infants. *Surg Today* 46:757–763. [https://doi.org/10.1007/s00595-015-](https://doi.org/10.1007/s00595-015-1222-3)
379 [1222-3](https://doi.org/10.1007/s00595-015-1222-3)
- 380 17. Borruto FA, Ferreira CG, Kaselas C, et al (2014) Thoracoscopic treatment of congenital
381 diaphragmatic eventration in children: lessons learned after 15 years of experience. *Eur J Pediatr*
382 *Surg* 24:328–331. <https://doi.org/10.1055/s-0033-1349054>
- 383 18. Heiwegen K, van Heijst AF, Daniels-Scharbatke H, et al (2020) Congenital diaphragmatic
384 eventration and hernia sac compared to CDH with true defects: a retrospective cohort study. *Eur*
385 *J Pediatr* 179:855–863. <https://doi.org/10.1007/s00431-020-03576-w>
- 386 19. Versteegh MIM, Braun J, Voigt PG, et al (2007) Diaphragm plication in adult patients with
387 diaphragm paralysis leads to long-term improvement of pulmonary function and level of
388 dyspnea. *Eur J Cardiothorac Surg* 32:449–456. <https://doi.org/10.1016/j.ejcts.2007.05.031>
- 389 20. Freeman RK, Van Woerkom J, Vyverberg A, Ascoti AJ (2009) Long-term follow-up of the
390 functional and physiologic results of diaphragm plication in adults with unilateral diaphragm
391 paralysis. *Ann Thorac Surg* 88:1112–1117. <https://doi.org/10.1016/j.athoracsur.2009.05.027>
- 392 21. Bin Asaf B, Kodaganur Gopinath S, Kumar A, et al (2021) Robotic diaphragmatic plication for
393 eventration: A retrospective analysis of efficacy, safety, and feasibility. *Asian J Endosc Surg*
394 14:70–76. <https://doi.org/10.1111/ases.12833>
- 395 22. Ribet M, Linder JL (1992) Plication of the diaphragm for unilateral eventration or paralysis. *Eur*
396 *J Cardiothorac Surg* 6:357–360. [https://doi.org/10.1016/1010-7940\(92\)90172-t](https://doi.org/10.1016/1010-7940(92)90172-t)

397 **Table 1:** Univariate analysis of baseline characteristics of the patients according to their treatment.

	Conservative treatment (CoT ; n = 27)	Surgery (n = 112)	<i>p</i> =	First intention surgery (S1 ; n = 87)	Surgery after survey (S2 ; n = 25)	<i>p</i> = (S2 vs S1)	<i>p</i> = (S2 vs CoT)
Term of birth (WA)	36.2 +/- 4.3	37.4 +/- 3.7	0.27	37.8 +/- 3.2	36.2 +/- 4.6	0.21	
Median age at diagnosis (months)	2 [0-10]	8 [1 - 16]	0.06	9 [2 - 17]	1 [0 - 4]	0.001	0.68
Late diagnosis (>12 months) (n, %)	5; 18.5%	34; 30.4%	0.24	30; 34.5%	4; 16.0%	0.09	1
Sex (M/F; %M)	19/8; 70.4%	76/36; 67.9%	1	56/31; 64.4%	20/5; 80%	0.16	0.53
Side (R/L; %L)	21 /6; 22.2%	73 /40; 35.4%	0.26	57/30; 34.5%	16/10 (incl. 1 bilateral); 38.5%	0.82	0.24
Associated pathologies (n; %)	13; 48.1%	35; 31.3%	0.11	26; 29.9%	9; 36.0%	0.63	0.41
Symptoms (n; %)	11; 40.7%	81; 72.3%	0.003	64; 73.6%	17; 68.0%	0.62	0.058
Respiratory (n; %)	11; 40.7%	76; 67.9%	0.01	60; 69.0%	16; 64.0%	0.64	0.11
Digestive (n; %)	2; 7.4%	15; 13.4%	0.53	11; 12.6%	4; 16.0%	0.74	0.41
Orthopaedics (n; %)	0	9; 8.0%	0.2	8; 9.2%	1; 4.0%	0.45	0.48
Median diaphragmatic level (back rib) on chest radiography	7 [6-8]. n=26	6 [5 - 7]. n=98	<0.0001	6 [5 - 7]. n=75	6 [5 - 7]. n=23	0.72	0.001
No pulmonary impact on CT scan (n; %)	8 ; 80.0% (n = 10)	27 ; 42.2% (n = 64)	<0.0001	22 ; 44.0% (n = 50)	5 ; 35.7% (n = 14)	0.76	0.047

398 CoT conservative treatment group; S1 = First intention surgery; S2 = surgery after failure of conservative management; WA = weeks of amenorrhea ; M =

399 male ; F = female ; R = right ; L = left.

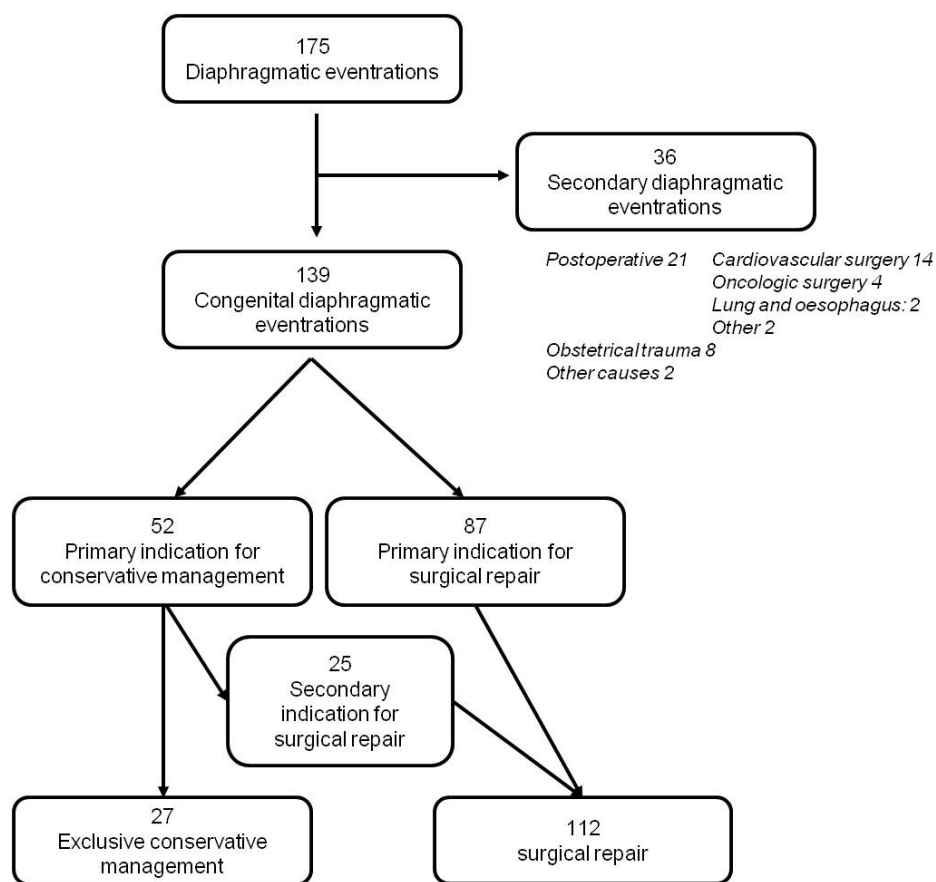
400

401

402 **Table 2:** comparative outcomes of congenital diaphragmatic eventrations

	Conservative management (n = 27)	Surgery (n = 112)	OR [95%CI]	p=
Age at last survey (months)	16 [6 - 55], n = 26	48 [24 - 72], n = 109		0.005
Follow-up (months)	9 [4 - 36], n = 26	28.3 [10;3 - 60.2], n=108		0.01
Hospital stays (n; %)	0	14; 10.1%	0.0 [0.0 - 1.1]	0.07
Iterative surgery (n; %)	0	9; 8.0%		NA
Postoperative complications (n;%)	0	22; 19.6%		NA
Symptoms (n; %)	5; 18.5%	25; 22.3%	0.79 [0.30 - 2.15]	0.8
Respiratory (n; %)	5; 18.5%	16; 14.3%	1.36 [0.50 - 4.10]	0.56
Digestive (n; %)	0	4; 3.6%	0.0 [0.0 - 4.3]	1
Orthopaedics (n; %)	1; 3.7%	9; 8.0%	0.44 [0.03 - 3.00]	0.69
Resolution of symptoms (n ;%)	7; 26.9%, n = 26	58; 53.7%, n = 108	0.32 [0.13 - 0.81]	0.017
Persistence of symptoms (n ;%)	3; 14.3%, n = 21	19; 17.9%, n = 106	0.76 [0.22 - 2.58]	1
Apparition of symptoms (n; %)	2; 9.5%, n = 21	6; 5.7%, n = 106	1.75 [0.34 - 7.81]	0.61
Follow-up chest radiography (n. %)	19; 70.3%	106; 94.6%	0.13 [0.04 - 0.41]	0.001
Diaphragmatic level (back rib)	8 [7 - 8]. n=19	9 [8 - 9]. n=82		0.003
Difference in dome level (number of ribs)	0 [0 - 2]. n=18	2 [1.7 - 3]. n=77		<0.0001
Improvement (n; %)	8; 44.4%	69; 89.6%	0.39 [0.14 - 1.09]	0.07
Stability (n; %)	5; 27.8%	8; 10.4%	4.38 [1.35 - 14.24]	0.027
Aggravation (n; %)	2; 11.1%	1; 1.3%	12.35 [1.33 - 180.00]	0.06
Pulmonary abnormalities (n; %)	0	5 (4.7%)	0.0 [0.0 - 4.0]	1
Orthopaedic abnormalities (n; %)	0	8 (7.5%)	0.0 [0.0 - 2.7]	0.6
Overall mortality (n; %)	1; 3.7%	6; 5.4%	0.68 [0.06 - 4.55]	1

403 NA : not applicable; OR : odds ratio with 95% confidence interval (95%CI). Quantitative data
404 are expressed as median with interquartile range.



405

406

407 **Fig. 1.** Flowchart of the cohort of paediatric patients with diaphragmatic eventration

408